

Generation and Reservoirs Statistics

December 12, 2023



PUBLIC UTILITIES COMMISSION OF SRI LANKA

1. Daily Generation Mix in MWh

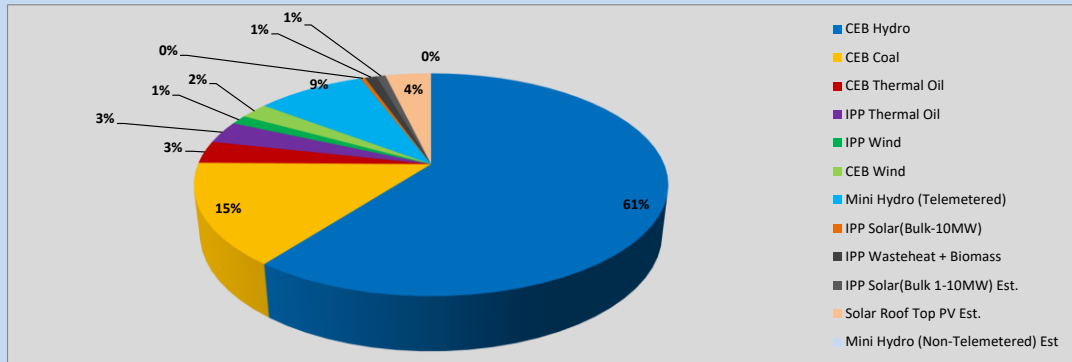


Table 01

	Generation (MWh)
CEB Hydro	24,991
CEB Coal	6,108
CEB Thermal Oil	1,341
IPP Thermal Oil	1,338
IPP Wind	556
CEB Wind	943
Mini Hydro (Telemetered)	3,677
IPP Solar (Bulk)	153
IPP Waste heat + Biomass	396
Total Generation (Excluding estimated figures)	39,503
* Estimated unserved energy	0
* Estimated Mini Hydro (Non telemetered)	-
* Estimated IPP Solar PV (Bulk 1-10MW)	304
* Estimated Solar Roof Top PV	1540
Total Generation (Including estimated figures)	41,347

* Estimated figures of CEB generation report

Table 02

	Installed Capacity (MW)
CEB Hydro	1409
CEB Coal	810
CEB Thermal Oil	781
IPP Thermal Oil (West Coast, ACE Matara and ACE Embilipitiya)	387
IPP Wind	148
CEB Wind	100
Mini Hydro	422
IPP Waste heat + Biomass	50
IPP Solar	136
Rooftop Solar (Ordinary)	277
Rooftop Solar (LT Bulk)	263
Rooftop Solar (HT Bulk)	70

Data Source - Monthly Review Report [Aug-2023]

2. Cumulative Dispatch

Following data excludes the contribution from roof top solar, non telemetered solar and mini hydro plants

Table 03 - Current Month

Category	Dispatch (GWh)	
CEB Hydro	306	65.56%
CEB Coal	55	11.74%
CEB Thermal Oil	9	2.01%
IPP Thermal	10	2.05%
SPP Wind	6	1.20%
CEB Wind	8	1.62%
Mini Hydro *	44	9.52%
IPP Solar *	25	5.29%
IPP Waste heat + BMP	5	1.01%
Total	466	

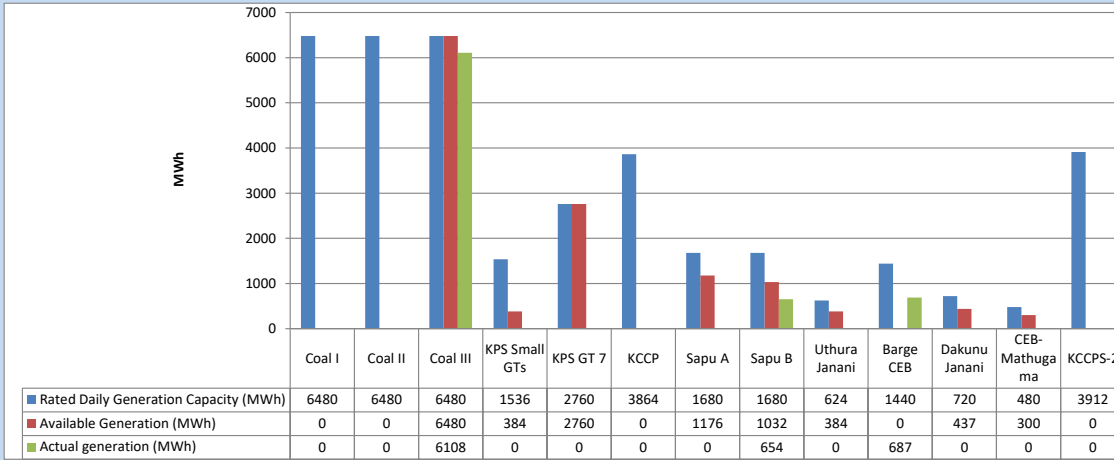
Table 04 - Current Year

Category	Dispatch (GWh)	
CEB Hydro	4,130	28.25%
CEB Coal	4,550	31.13%
CEB Thermal Oil	1,965	13.44%
IPP Thermal	1,137	7.78%
SPP Wind	379	2.59%
CEB Wind	370	2.53%
Mini Hydro *	1,117	7.64%
IPP Solar *	827	5.66%
IPP Waste heat	144	0.99%
Total	14,619	

*Including estimated contribution from non telemetered plants

3. CEB owned Thermal Plant Dispatch

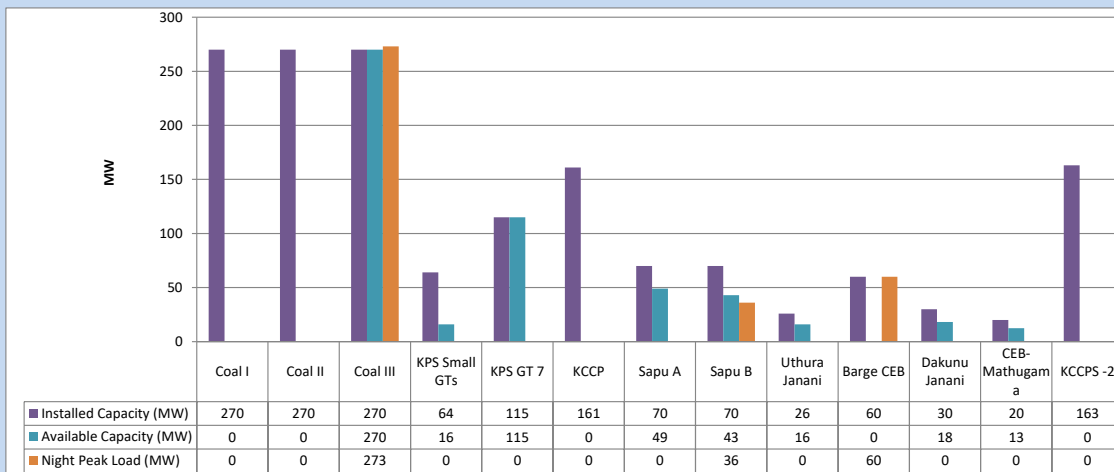
December 12, 2023



Available Generation is estimated based on plant availability at 6.00am on

December 13, 2023

4. CEB owned Thermal Plant Loading at the Night Peak

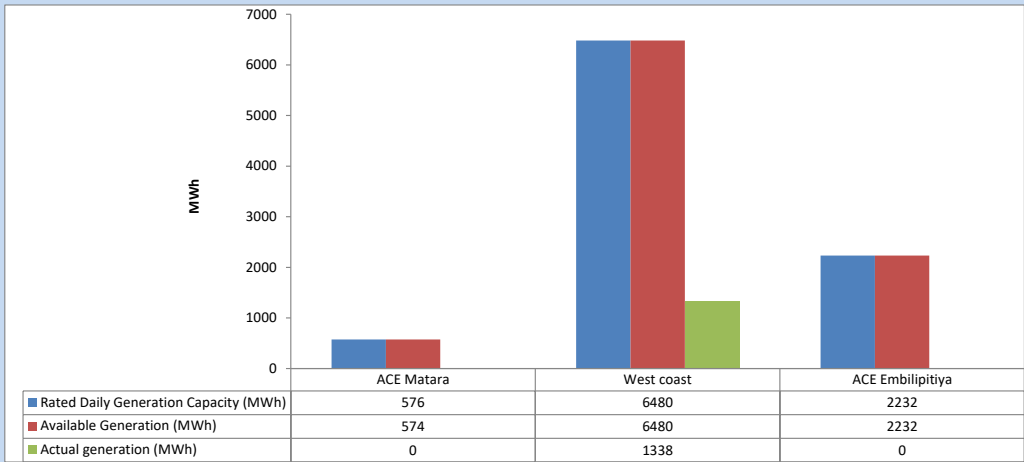


Plant availability is recorded at 6.00 am on

December 13, 2023

5. IPP owned Thermal Plant Dispatch

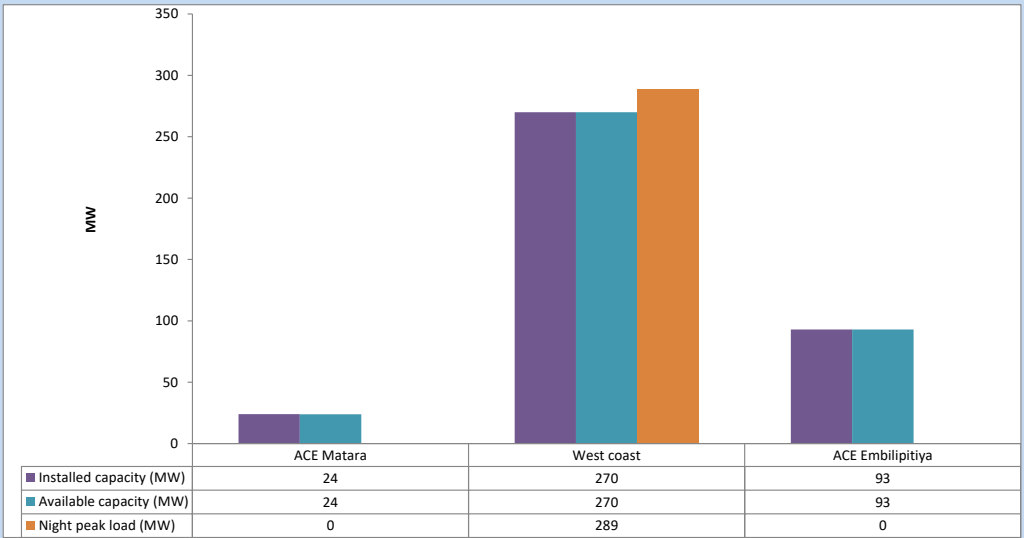
December 12, 2023



Available Generation is estimated based on plant availability at 6.00am on

December 13, 2023

6. IPP owned Thermal Plant Loading at the Night Peak

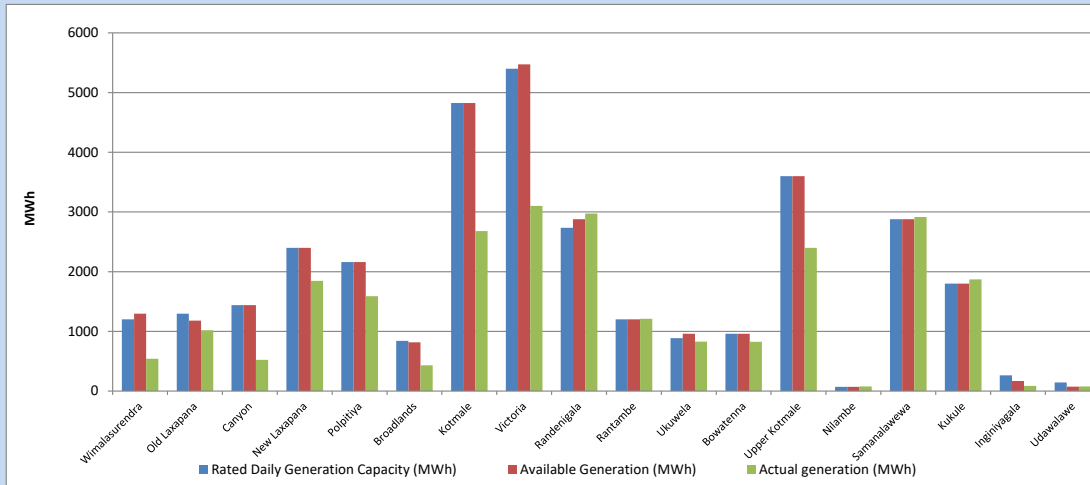


Plant availability is recorded at 6.00 am on

December 13, 2023

7. Major Hydro Plant Dispatch

December 12, 2023

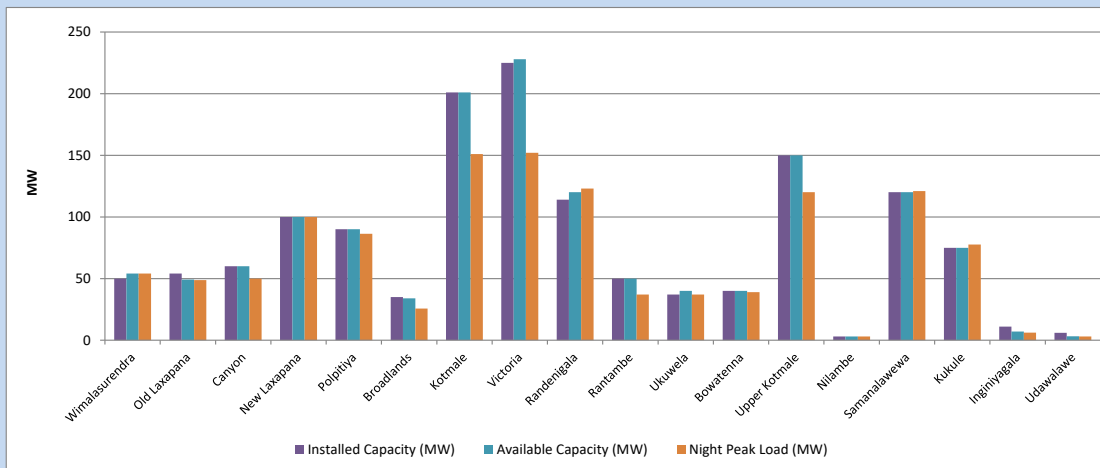


Available Generation is estimated based on plant availability at 6.00am on December 13, 2023
Broadlands power plant is operating in the Commissioning Stage

December 13, 2023

8. Major Hydro Plant Loading at Night Peak

December 12, 2023



Plant availability is recorded at 6.00 am on December 13, 2023
Broadlands power plant is operating in the Commissioning Stage

December 13, 2023

9. Summary of Major Plant performance

Table 05

Plant	Installed Capacity (MW)	Plant Availability (MW)	Night peak Load (MW)	Plant Dispatch (MWh)
Wimalasurendra	50	54	54	540
Old Laxapana Canyon	54	49	49	1,017
New Laxapana	60	60	50	523
Polpitiya	100	100	100	1,845
Broadlands	90	90	86	1,590
Kotmale	35	34	26	432
Kotmale	201	201	151	2,680
Victoria	225	228	152	3,103
Randenigala	114	120	123	2,972
Rantambe	50	50	37	1,211
Ukuwela	37	40	37	828
Bowatenna	40	40	39	824
Upper Kotmale	150	150	120	2,398
Nilambe	3	3	3	77
Samanalawewa	120	120	121	2,916
Kukule	75	75	78	1,871
Inginiyagala	11	7	6	86
Udawalawe	6	3	3	78
Puttalam Coal I	270	0	0	0
Puttalam Coal II	270	0	0	0
Puttalam Coal III	270	270	273	6,108
KPS Small GTs	64	16	0	0
KPS GT 7	115	115	0	0
KCCP	161	0	0	0
Sapugaskanda A	70	49	0	0
Sapugaskanda B	70	43	36	654
Uthura Janani	26	16	0	0
Barge CEB	60	0	60	687
CEB-Hambantota	30	18	0	0
CEB-Mathugama	20	13	0	0
ACE Matara	24	24	0	0
Asia Power	50	0	0	0
KCCPS -2	163	0	0	0
West Coast	270	270	289	1,338
Nothern Power	36	0	0	0
ACE Embilipitiya	93	93	0	0
Total	3,483	2,351	2,122	39,503

Plant availability is the availability recorded at 6 am on

December 13, 2023

10. Contribution to the Night Peak in MW

December 12, 2023

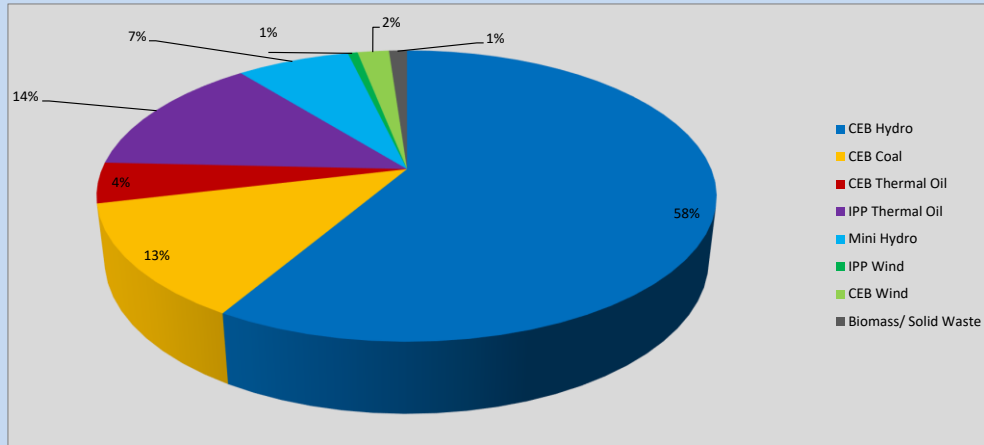


Table 06

CEB Hydro	1250	MW
CEB Coal	273	MW
CEB Thermal Oil	96	MW
IPP Thermal Oil	289	MW
Mini Hydro (Telemetered)	151	MW
IPP Wind	13.1	MW
CEB Wind	41.8	MW
Biomass/ Solid Waste	24	MW

Recorded Peak Demand Data

Table 07

Night Peak*	2,137	MW
Day Peak Maximum Demand	1,987	MW
Day Peak Minimum Demand	1,532	MW
Off Peak Minimum Demand	1,172	MW

Above figures are excluding contribution from roof top solar, non telemetered solar and mini hydro plants

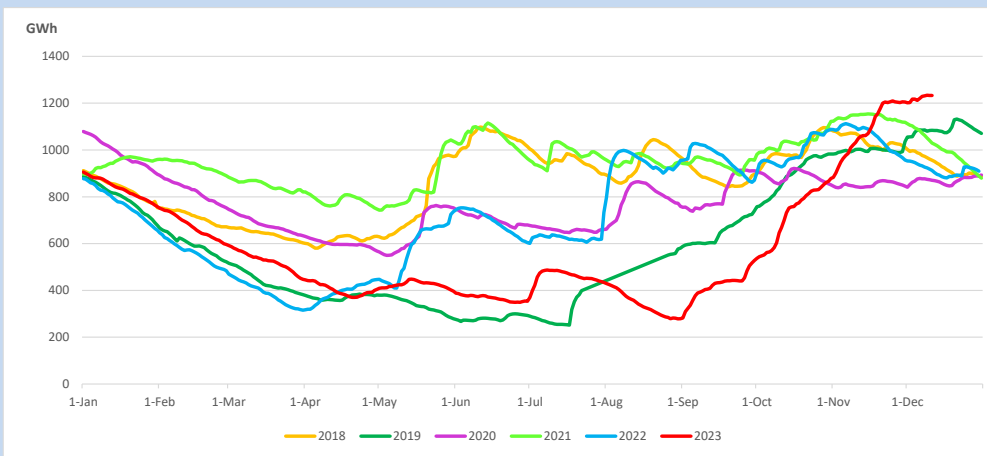
Reservoir Levels -

as at 06.00 Hr on December 13, 2023

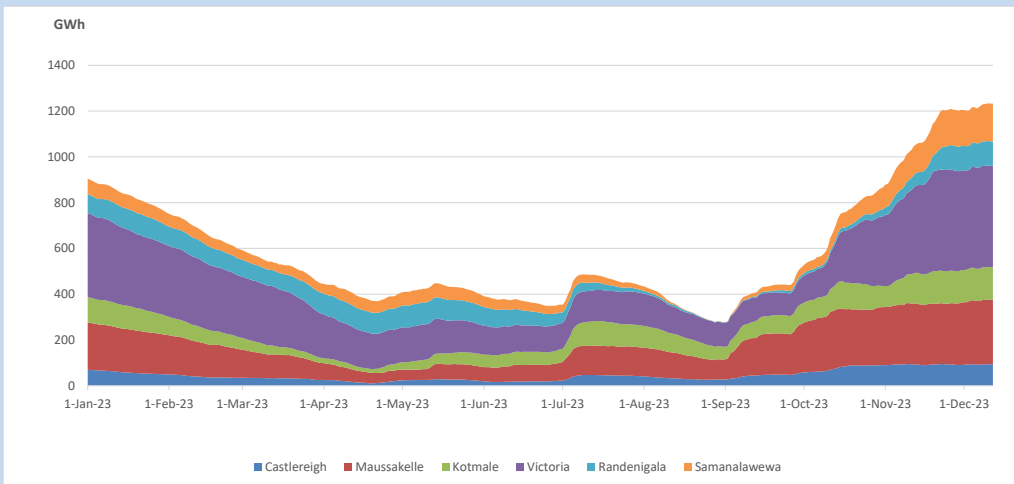


Total Reservoir Level 1232.7 GWh
 % of Total capacity 99.0%

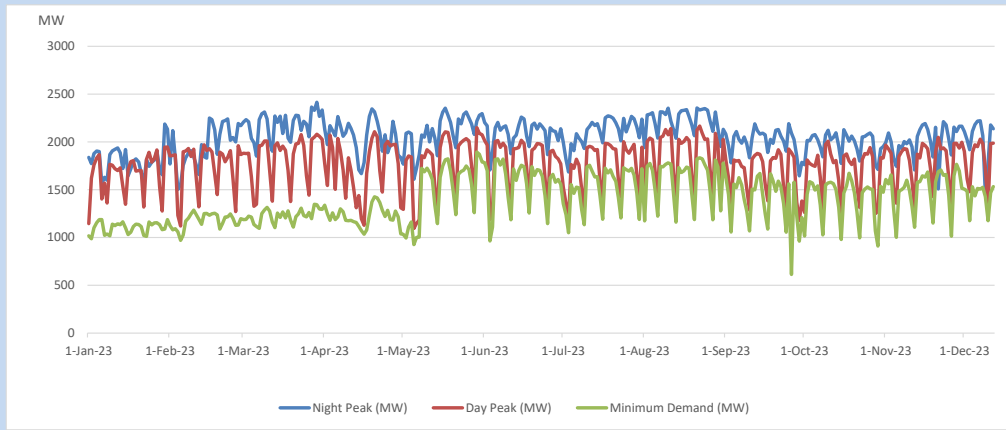
11. Comparison of Total Reservoir Storage Levels with Past Years



12. Variation of Major Hydro Reservoir Levels in the current year (GWh)



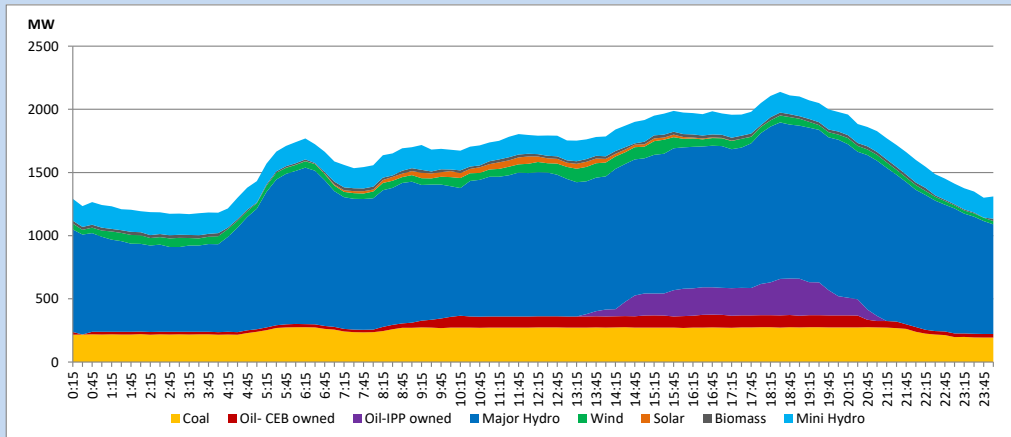
13. Variation of Demand during the current year



The above figures are excluding contribution from roof top solar, non telemetered solar and mini hydro plants

14. Daily Load Curve

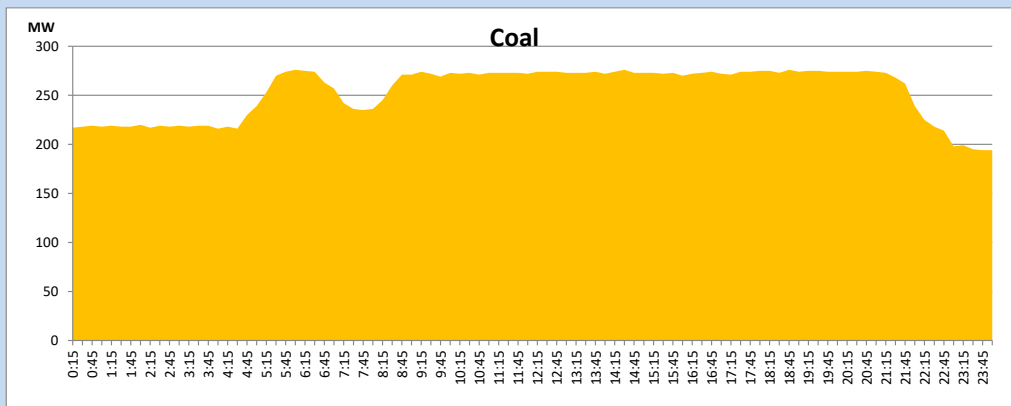
December 12, 2023



Solar and wind data is based on Telemetered Power Stations only

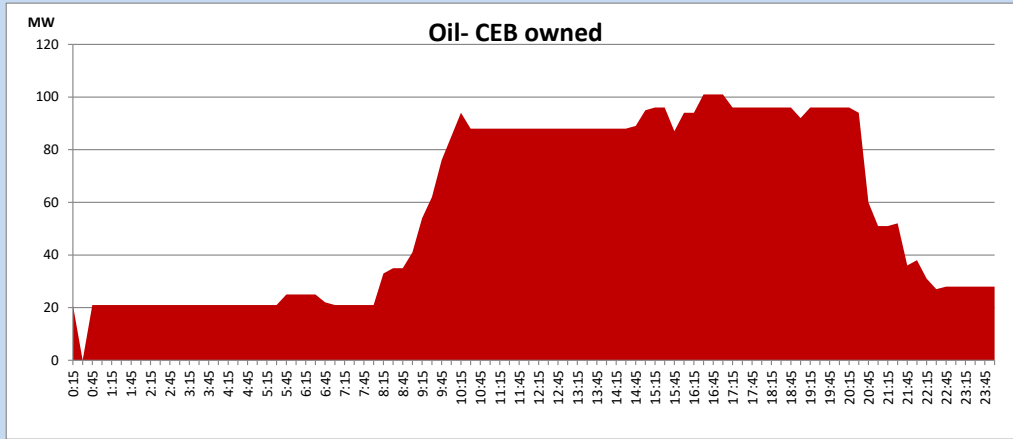
Coal Generation during

December 12, 2023



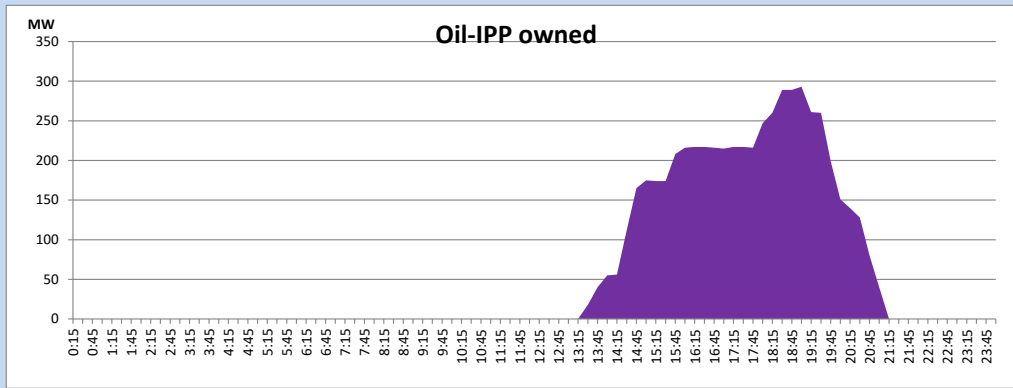
CEB Oil Plant Generation during

December 12, 2023



IPP Oil Plant Generation during

December 12, 2023



Major Hydro Generation during

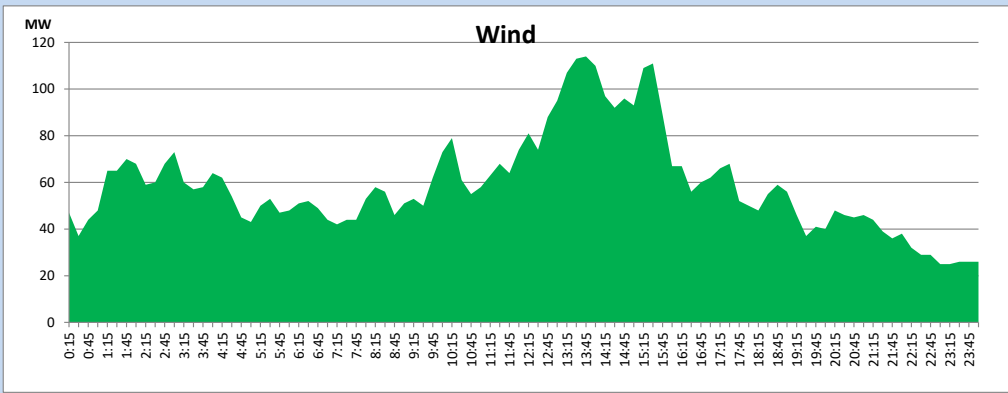
December 12, 2023



Wind Generation during

December 12, 2023

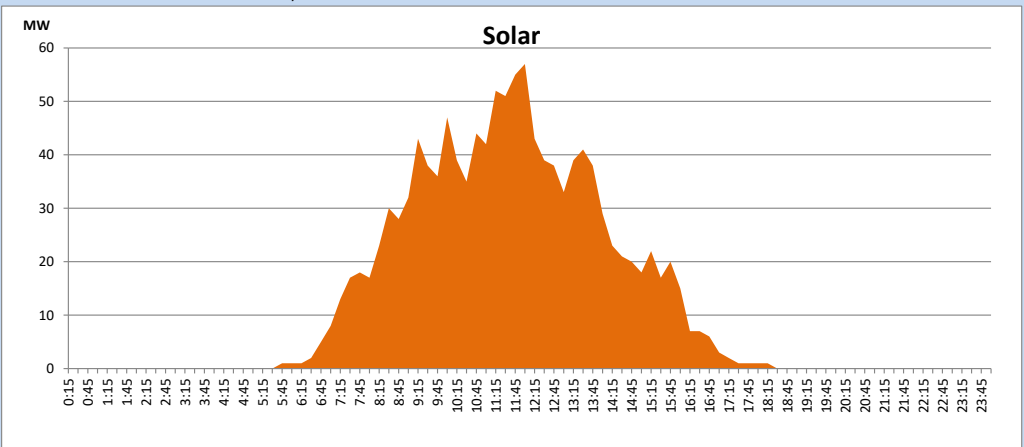
Based on Telemetered Power Stations only



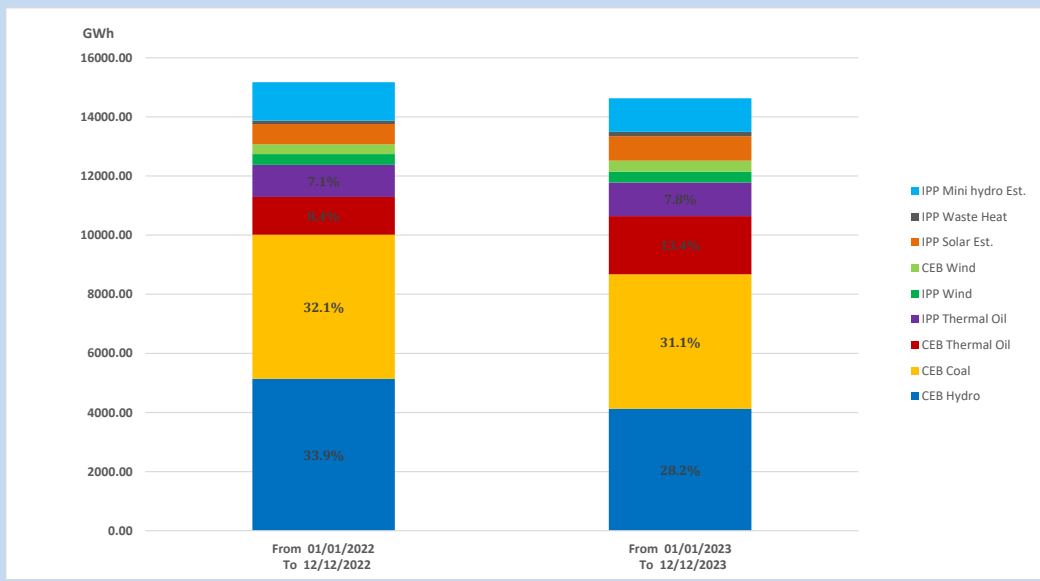
Solar Generation during

December 12, 2023

Based on Telemetered Power Stations only



15. Cumulative Dispatch Comparison with Last Year



Cumulative dispatch
 From 01/01/2022 To 12/12/2022
 From 01/01/2023 To 12/12/2023

15173 GWh
 14630 GWh

The above figures are including contribution from roof top solar, non telemetered solar and mini hydro plants (figures have been adjusted based on the data from the CEB monthly review reports.)

Thermal Plant Fuel types

Table 08

Power Station	Primary Fuel
CEB Thermal	
Sapugaskanda 1	Heavy Fuel
Sapugaskanda 2	Heavy Fuel
Kelanitissa Small Gas Turbines	Auto Diesel
GT 7 - Kelanitissa	Auto Diesel
Kelanitissa CCY	Naphtha or Diesel
Lakvijaya 1	Coal
Lakvijaya 2	Coal
Lakvijaya 3	Coal
Uthuru Janani	Heavy Fuel
Barge CEB	Heavy Fuel
KCCPS -2	Auto Diesel

Power Station	Primary Fuel
Private Thermal	
West Coast	Auto Diesel / Heavy Fuel
ACE Matara	Heavy Fuel
ACE Embilipitiya	Heavy Fuel

Major Incidents reported during the day

December 12, 2023

- 1) Embilipitiya - Matara 132kV cct tripped from both ends at 14:27hrs due to the operation of Distance protection. The cct was normalized at 14:39hrs.
- 2) Victoria reservoir spilling started at 16:35hrs and spilling stopped at 21:17hrs.
- 3) Kukule pond spilling continues to the present hour.