

Generation and Reservoirs Statistics

December 11, 2023



PUBLIC UTILITIES COMMISSION OF SRI LANKA

1. Daily Generation Mix in MWh

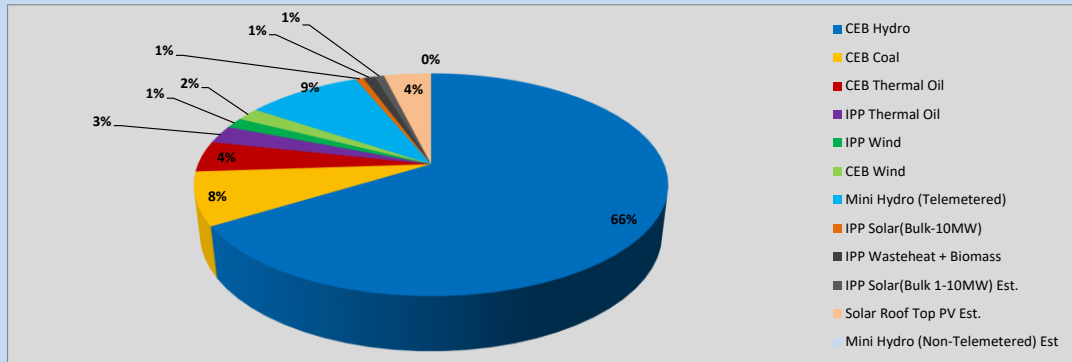


Table 01

	Generation (MWh)
CEB Hydro	26,528
CEB Coal	3,077
CEB Thermal Oil	1,789
IPP Thermal Oil	1,044
IPP Wind	609
CEB Wind	744
Mini Hydro (Telemetered)	3,771
IPP Solar (Bulk)	258
IPP Waste heat + Biomass	379
Total Generation (Excluding estimated figures)	38,199
* Estimated unserved energy	0
* Estimated Mini Hydro (Non telemetered)	-
* Estimated IPP Solar PV (Bulk 1-10MW)	304
* Estimated Solar Roof Top PV	1540
Total Generation (Including estimated figures)	40,043

* Estimated figures of CEB generation report

Table 02

	Installed Capacity (MW)
CEB Hydro	1409
CEB Coal	810
CEB Thermal Oil	781
IPP Thermal Oil (West Coast, ACE Matara and ACE Embilipitiya)	387
IPP Wind	148
CEB Wind	100
Mini Hydro	422
IPP Waste heat + Biomass	50
IPP Solar	136
Rooftop Solar (Ordinary)	277
Rooftop Solar (LT Bulk)	263
Rooftop Solar (HT Bulk)	70

Data Source - Monthly Review Report [Aug-2023]

2. Cumulative Dispatch

Following data excludes the contribution from roof top solar, non telemetered solar and mini hydro plants

Table 03 - Current Month

Category	Dispatch (GWh)	
CEB Hydro	281	66.06%
CEB Coal	49	11.45%
CEB Thermal Oil	8	1.89%
IPP Thermal	8	1.94%
SPP Wind	5	1.18%
CEB Wind	7	1.55%
Mini Hydro *	41	9.58%
IPP Solar *	23	5.34%
IPP Waste heat + BMP	4	1.01%
Total	425	

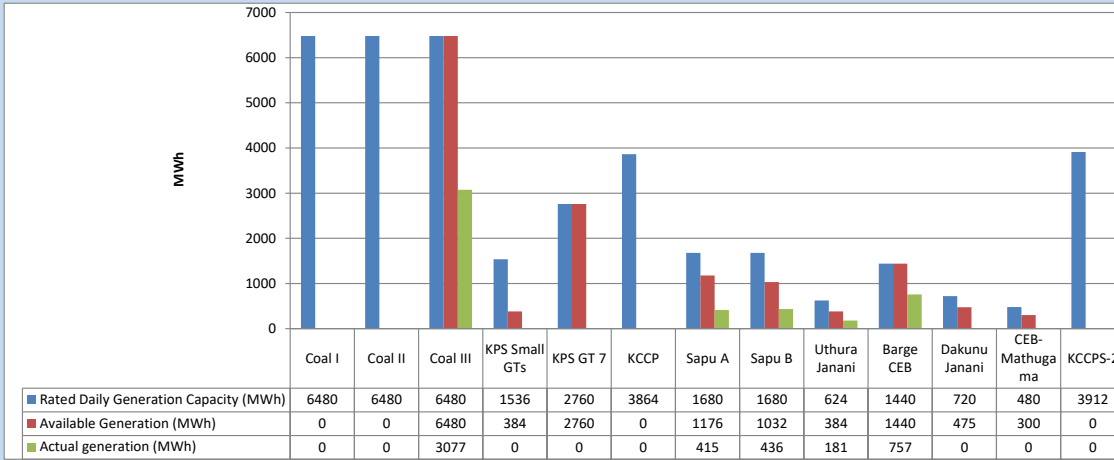
Table 04 - Current Year

Category	Dispatch (GWh)	
CEB Hydro	4,105	28.16%
CEB Coal	4,544	31.17%
CEB Thermal Oil	1,963	13.47%
IPP Thermal	1,135	7.79%
SPP Wind	378	2.59%
CEB Wind	369	2.53%
Mini Hydro *	1,113	7.64%
IPP Solar *	825	5.66%
IPP Waste heat	144	0.99%
Total	14,577	

*Including estimated contribution from non telemetered plants

3. CEB owned Thermal Plant Dispatch

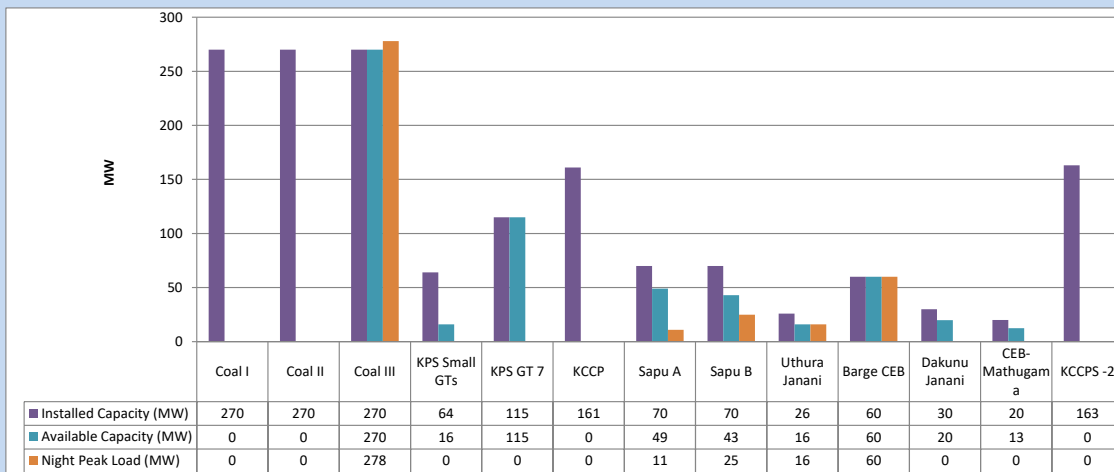
December 11, 2023



Available Generation is estimated based on plant availability at 6.00am on

December 12, 2023

4. CEB owned Thermal Plant Loading at the Night Peak

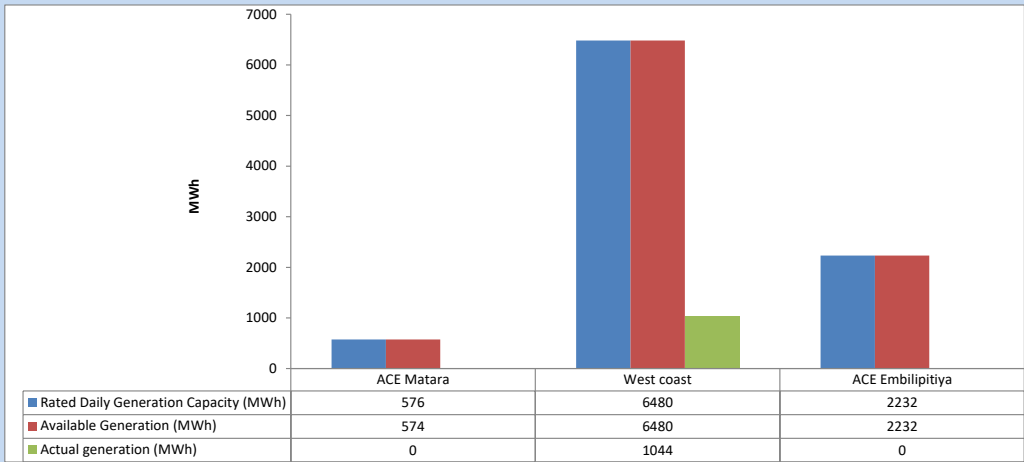


Plant availability is recorded at 6.00 am on

December 12, 2023

5. IPP owned Thermal Plant Dispatch

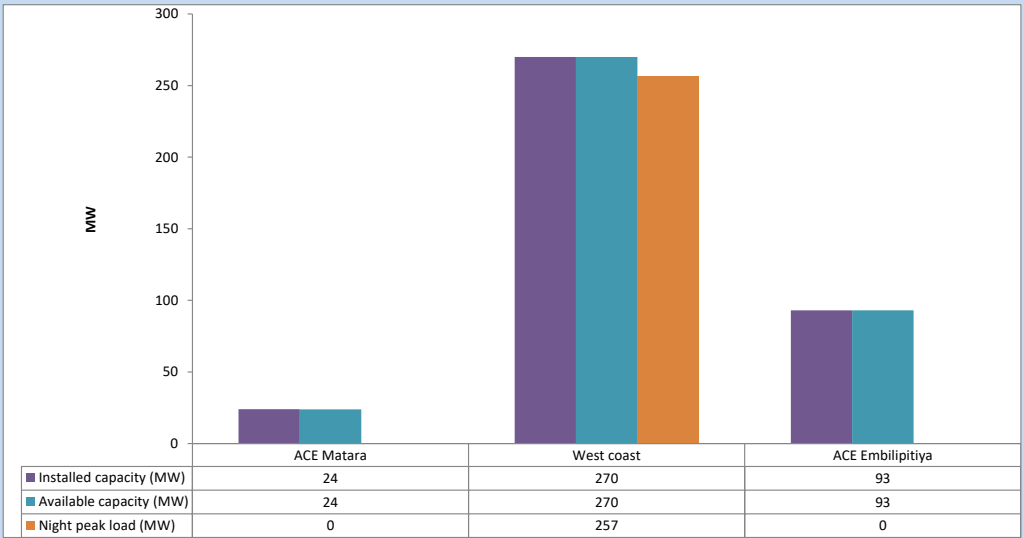
December 11, 2023



Available Generation is estimated based on plant availability at 6.00am on

December 12, 2023

6. IPP owned Thermal Plant Loading at the Night Peak

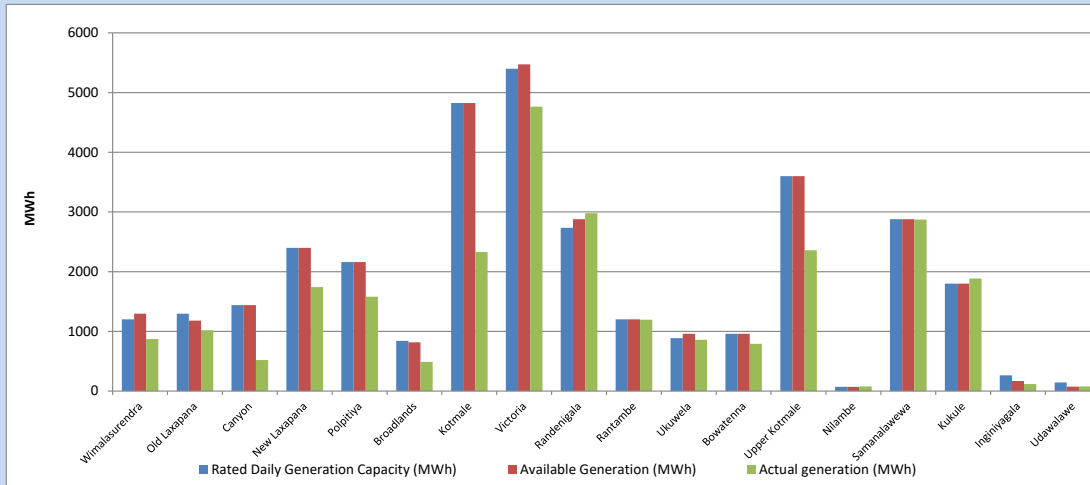


Plant availability is recorded at 6.00 am on

December 12, 2023

7. Major Hydro Plant Dispatch

December 11, 2023

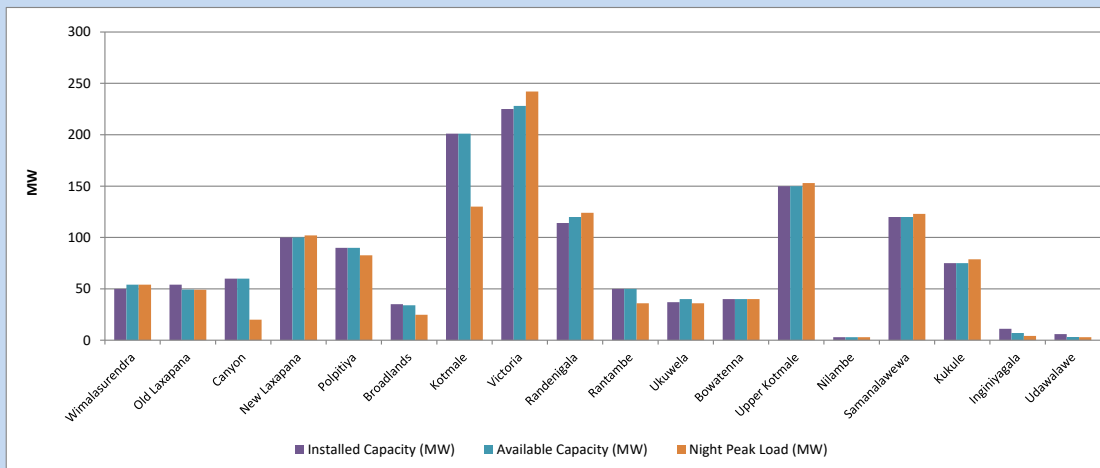


Available Generation is estimated based on plant availability at 6.00am on December 12, 2023
Broadlands power plant is operating in the Commissioning Stage

December 12, 2023

8. Major Hydro Plant Loading at Night Peak

December 11, 2023



Plant availability is recorded at 6.00 am on December 12, 2023
Broadlands power plant is operating in the Commissioning Stage

December 12, 2023

9. Summary of Major Plant performance

Table 05

Plant	Installed Capacity (MW)	Plant Availability (MW)	Night peak Load (MW)	Plant Dispatch (MWh)
Wimalasurendra	50	54	54	872
Old Laxapana	54	49	49	1,017
Canyon	60	60	20	520
New Laxapana	100	100	102	1,743
Polpitiya	90	90	83	1,580
Broadlands	35	34	25	488
Kotmale	201	201	130	2,330
Victoria	225	228	242	4,765
Randenigala	114	120	124	2,978
Rantambe	50	50	36	1,196
Ukuwela	37	40	36	858
Bowatenna	40	40	40	791
Upper Kotmale	150	150	153	2,360
Nilambe	3	3	3	76
Samanalawewa	120	120	123	2,874
Kukule	75	75	79	1,886
Inginiyagala	11	7	4	116
Udawalawe	6	3	3	78
Puttalam Coal I	270	0	0	0
Puttalam Coal II	270	0	0	0
Puttalam Coal III	270	270	278	3,077
KPS Small GTs	64	16	0	0
KPS GT 7	115	115	0	0
KCCP	161	0	0	0
Sapugaskanda A	70	49	11	415
Sapugaskanda B	70	43	25	436
Uthura Janani	26	16	16	181
Barge CEB	60	60	60	757
CEB-Hambantota	30	20	0	0
CEB-Mathugama	20	13	0	0
ACE Matara	24	24	0	0
Asia Power	50	0	0	0
KCCPS -2	163	0	0	0
West Coast	270	270	257	1,044
Nothern Power	36	0	0	0
ACE Embilipitiya	93	93	0	0
Total	3,483	2,413	2,163	38,199

Plant availability is the availability recorded at 6 am on

December 12, 2023

10. Contribution to the Night Peak in MW

December 11, 2023

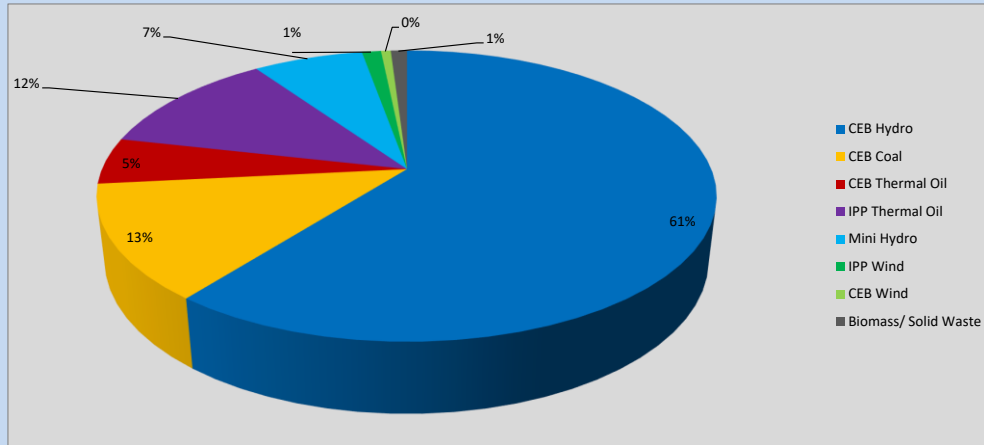


Table 06

CEB Hydro	1319	MW
CEB Coal	278	MW
CEB Thermal Oil	112	MW
IPP Thermal Oil	257	MW
Mini Hydro (Telemetered)	149	MW
IPP Wind	25.9	MW
CEB Wind	13.2	MW
Biomass/ Solid Waste	22	MW

Recorded Peak Demand Data

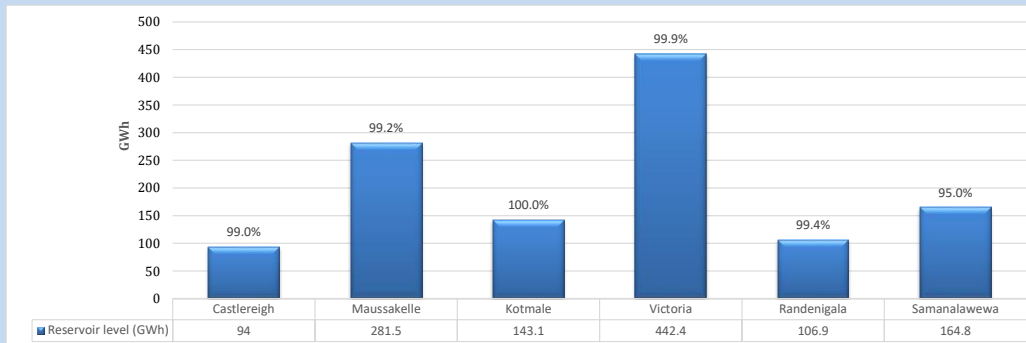
Table 07

Night Peak*	2,177	MW
Day Peak Maximum Demand	1,983	MW
Day Peak Minimum Demand	1,468	MW
Off Peak Minimum Demand	1,050	MW

Above figures are excluding contribution from roof top solar, non telemetered solar and mini hydro plants

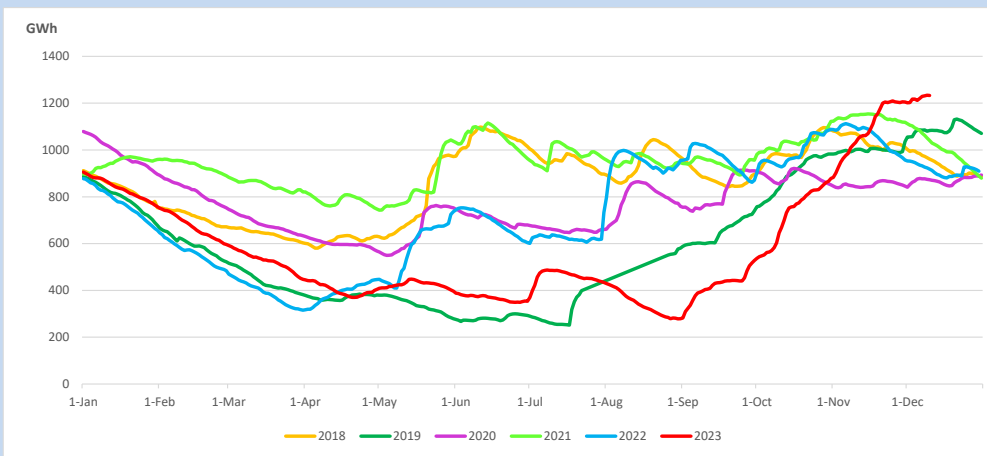
Reservoir Levels -

as at 06.00 Hr on December 12, 2023

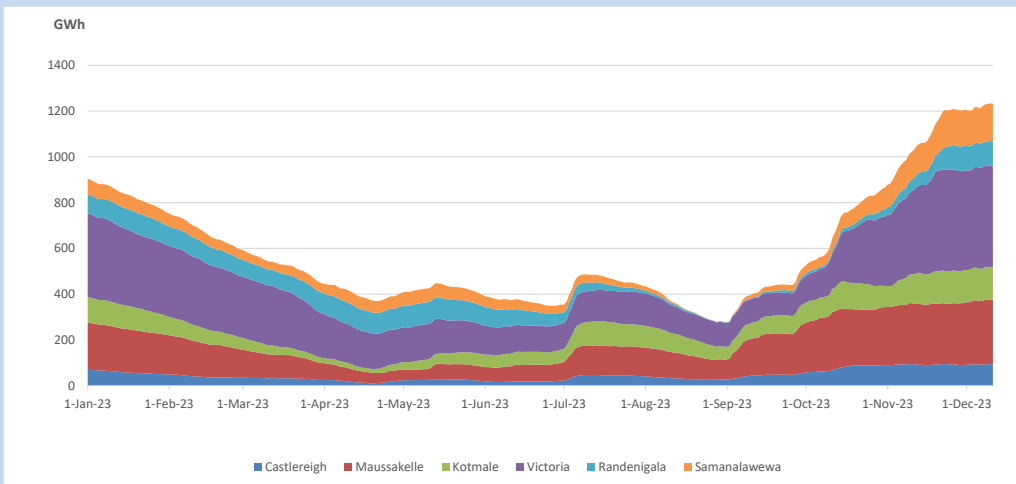


Total Reservoir Level 1232.7 GWh
 % of Total capacity 99.0%

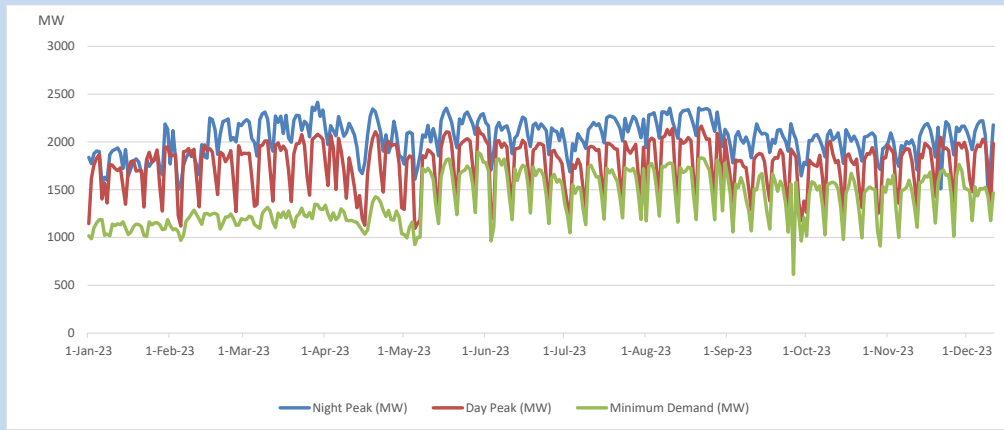
11. Comparison of Total Reservoir Storage Levels with Past Years



12. Variation of Major Hydro Reservoir Levels in the current year (GWh)



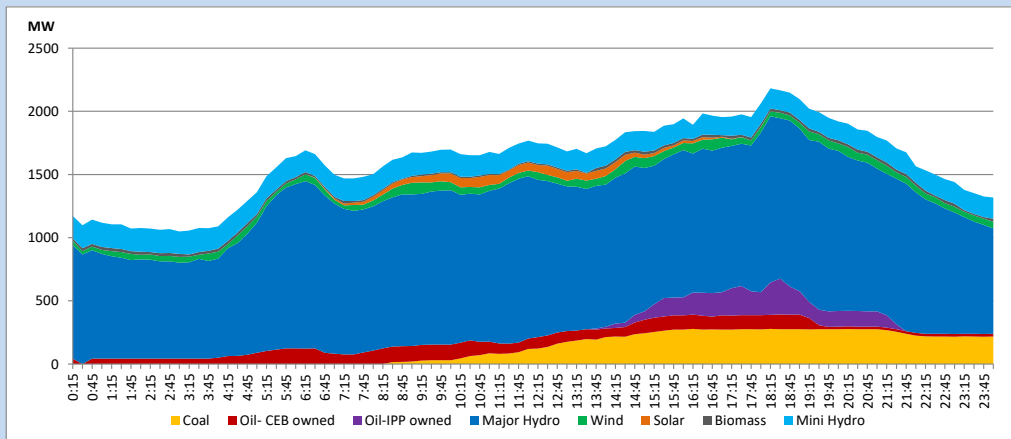
13. Variation of Demand during the current year



The above figures are excluding contribution from roof top solar, non telemetered solar and mini hydro plants

14. Daily Load Curve

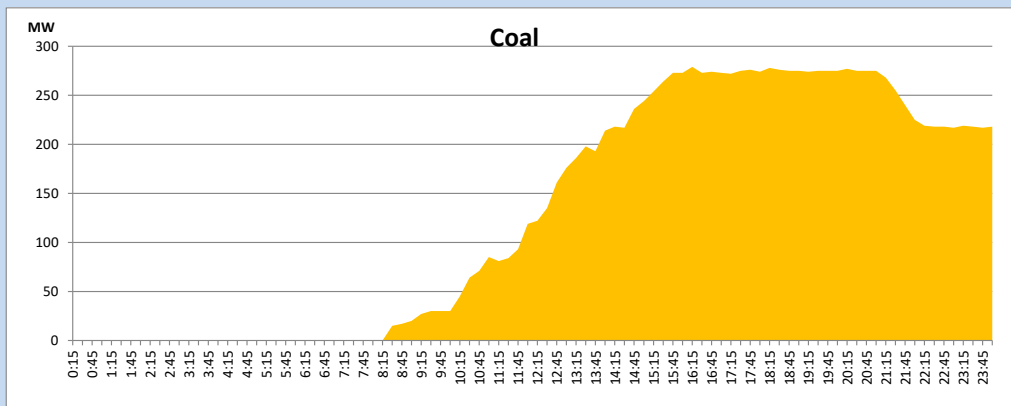
December 11, 2023



Solar and wind data is based on Telemetered Power Stations only

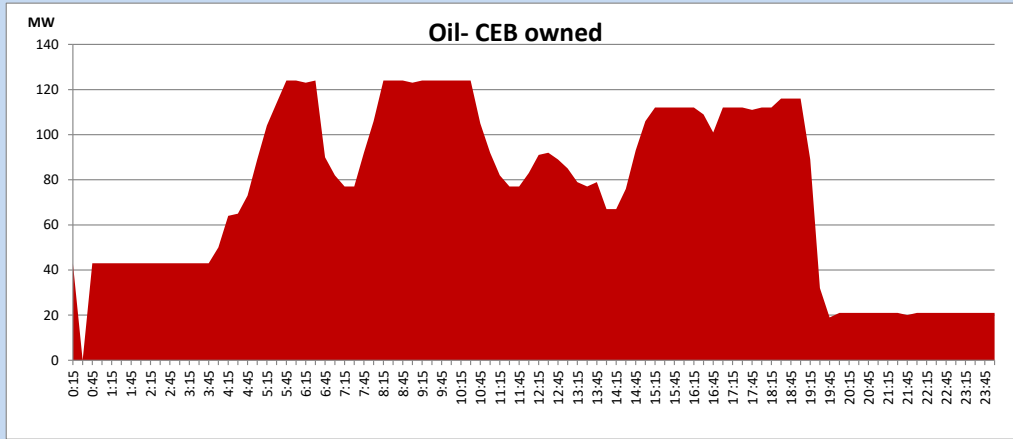
Coal Generation during

December 11, 2023



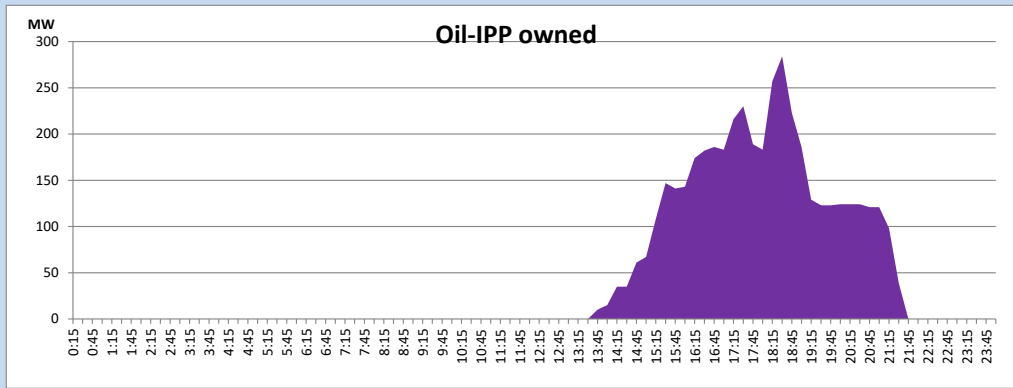
CEB Oil Plant Generation during

December 11, 2023



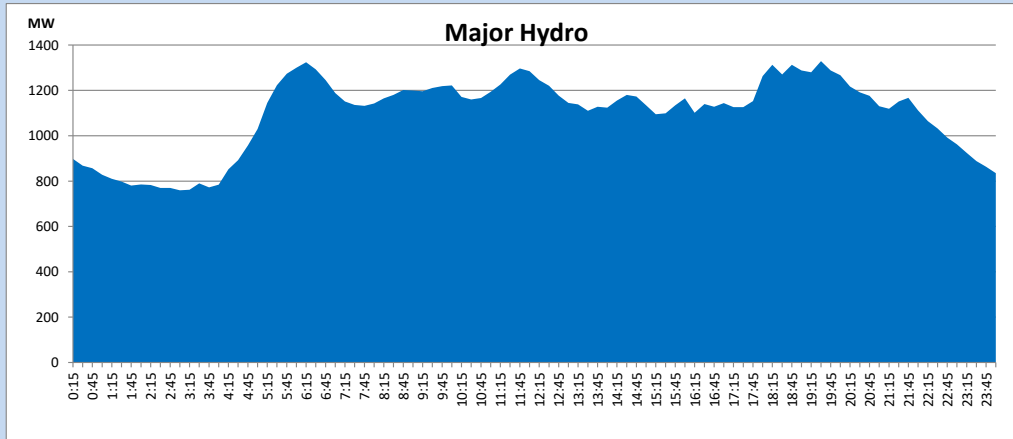
IPP Oil Plant Generation during

December 11, 2023



Major Hydro Generation during

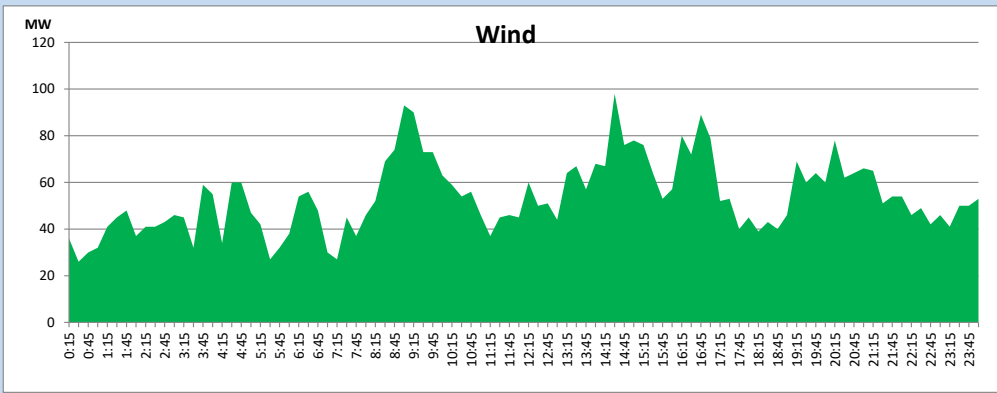
December 11, 2023



Wind Generation during

December 11, 2023

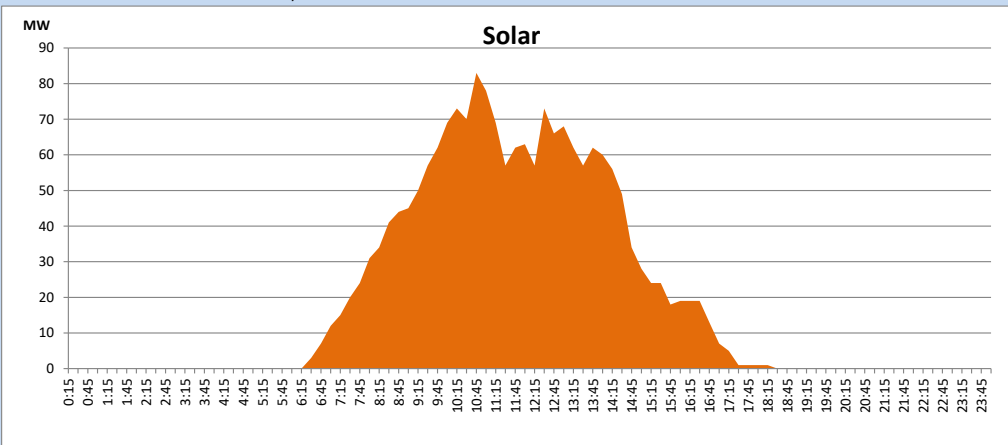
Based on Telemetered Power Stations only



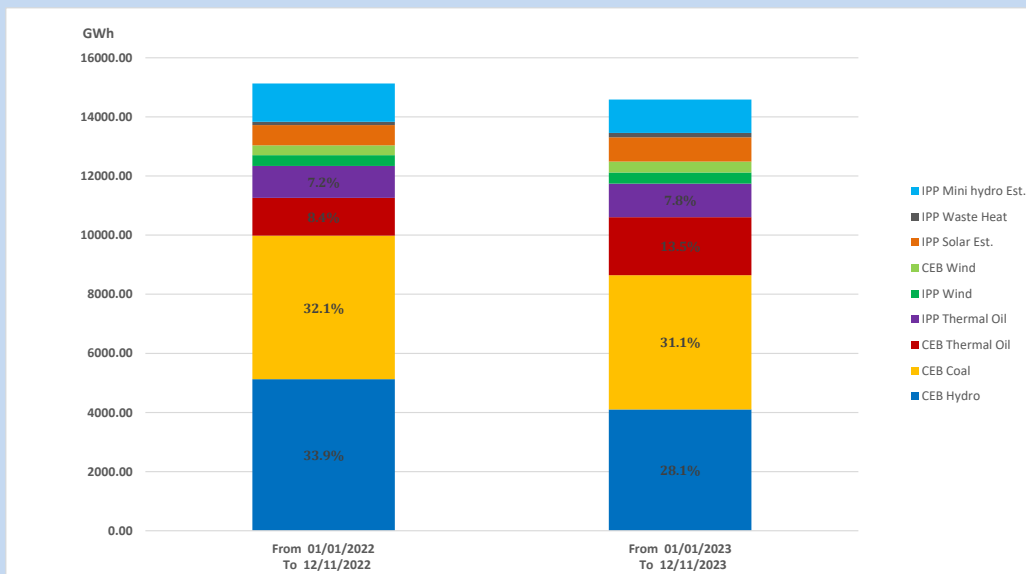
Solar Generation during

December 11, 2023

Based on Telemetered Power Stations only



15. Cumulative Dispatch Comparison with Last Year



Cumulative dispatch

From 01/01/2022 To 12/11/2022

15133 GWh

From 01/01/2023 To 12/11/2023

14588 GWh

The above figures are including contribution from roof top solar, non telemetered solar and mini hydro plants (figures have been adjusted based on the data from the CEB monthly review reports.)

Thermal Plant Fuel types

Table 08

Power Station	Primary Fuel
CEB Thermal	
Sapugaskanda 1	Heavy Fuel
Sapugaskanda 2	Heavy Fuel
Kelanitissa Small Gas Turbines	Auto Diesel
GT 7 - Kelanitissa	Auto Diesel
Kelanitissa CCY	Naphtha or Diesel
Lakvijaya 1	Coal
Lakvijaya 2	Coal
Lakvijaya 3	Coal
Uthuru Janani	Heavy Fuel
Barge CEB	Heavy Fuel
KCCPS -2	Auto Diesel

Power Station	Primary Fuel
Private Thermal	
West Coast	Auto Diesel / Heavy Fuel
ACE Matara	Heavy Fuel
ACE Embilipitiya	Heavy Fuel

Major Incidents reported during the day

December 11, 2023

- 1) LVPS unit 03 was synchronized at 08:18hrs and reached full load by 15:48hrs.
- 2) New Polpitiya - Padukka 220kV both ccts tripped & A/R from both ends at 18:14hrs due to the operation of distance protection.
- 3) Athurugiriya - Polpitiya - Thulhiriya 132kV cct tripped & A/R from Polpitiya and Athurugiriya sides only at 18:28hrs due to the operation of distance protection. At the same time, Athurugiriya - New Polpitiya - Thulhiriya 132kV cct also tripped and A/R from New Polpitiya and Athurugiriya sides only due to the same reason.
- 4) Upper Kothmale pond spilled intermittently & stopped at 15:01hrs. Kukule pond spilled intermittently and the spilling continues to the present hour.
- 5) Victoria, Kothmale and Randenigala reservoirs spilled intermittently. Kothmale and Randenigala reservoirs spilling stopped at 06:15 & 07:28hrs, respectively. Victoria reservoir spilling stopped at 03:57hrs (12.12.2023).