

# Generation and Reservoirs Statistics

December 6, 2023



**PUBLIC UTILITIES COMMISSION OF SRI LANKA**

## 1. Daily Generation Mix in MWh

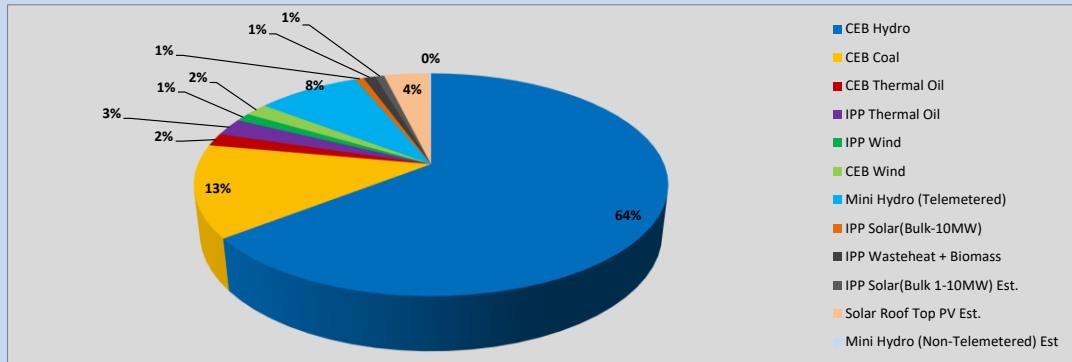


Table 01

	Generation (MWh)
CEB Hydro	26,853
CEB Coal	5,586
CEB Thermal Oil	776
IPP Thermal Oil	1,045
IPP Wind	505
CEB Wind	767
Mini Hydro (Telemetered)	3,514
IPP Solar (Bulk)	293
IPP Waste heat + Biomass	403
<b>Total Generation (Excluding estimated figures)</b>	<b>39,742</b>
* Estimated unserved energy	0
* Estimated Mini Hydro (Non telemetered)	56
* Estimated IPP Solar PV (Bulk 1-10MW)	304
* Estimated Solar Roof Top PV	1540
<b>Total Generation (Including estimated figures)</b>	<b>41,642</b>

\* Estimated figures of CEB generation report

Table 02

	Installed Capacity (MW)
CEB Hydro	1409
CEB Coal	810
CEB Thermal Oil	781
IPP Thermal Oil (West Coast, ACE Matara and ACE Embilipitiya)	387
IPP Wind	148
CEB Wind	100
Mini Hydro	422
IPP Waste heat + Biomass	50
IPP Solar	136
Rooftop Solar (Ordinary)	277
Rooftop Solar (LT Bulk)	263
Rooftop Solar (HT Bulk)	70

Data Source - Monthly Review Report [Aug-2023]

## 2. Cumulative Dispatch

Following data excludes the contribution from roof top solar, non telemetered solar and mini hydro plants

Table 03 - Current Month

Category	Dispatch (GWh)	
CEB Hydro	153	64.57%
CEB Coal	31	13.13%
CEB Thermal Oil	3	1.21%
IPP Thermal	4	1.65%
SPP Wind	4	1.62%
CEB Wind	5	2.16%
Mini Hydro *	22	9.44%
IPP Solar *	12	5.18%
IPP Waste heat + BMP	2	1.04%
<b>Total</b>	<b>236</b>	

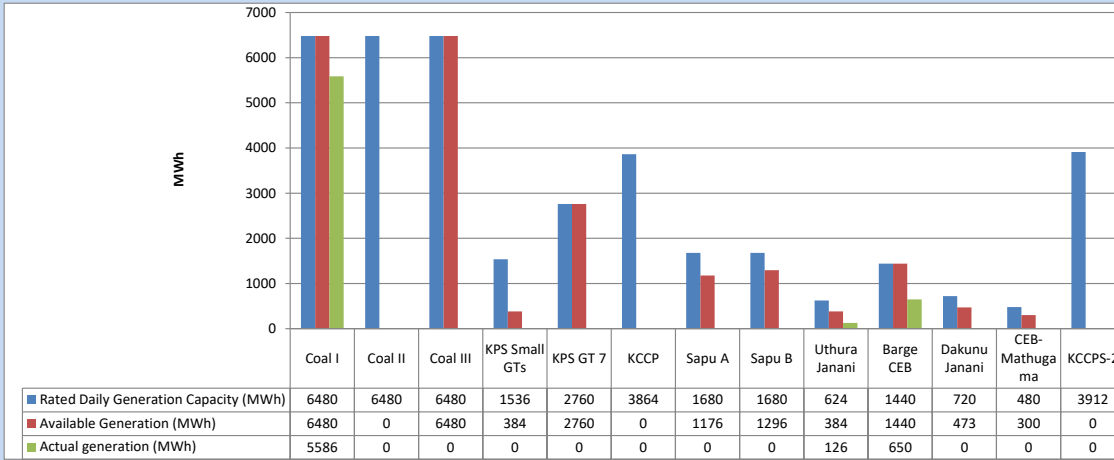
Table 04 - Current Year

Category	Dispatch (GWh)	
CEB Hydro	3,977	27.64%
CEB Coal	4,527	31.46%
CEB Thermal Oil	1,958	13.61%
IPP Thermal	1,131	7.86%
SPP Wind	377	2.62%
CEB Wind	368	2.56%
Mini Hydro *	1,095	7.61%
IPP Solar *	815	5.66%
IPP Waste heat	142	0.99%
<b>Total</b>	<b>14,389</b>	

\*Including estimated contribution from non telemetered plants

### 3. CEB owned Thermal Plant Dispatch

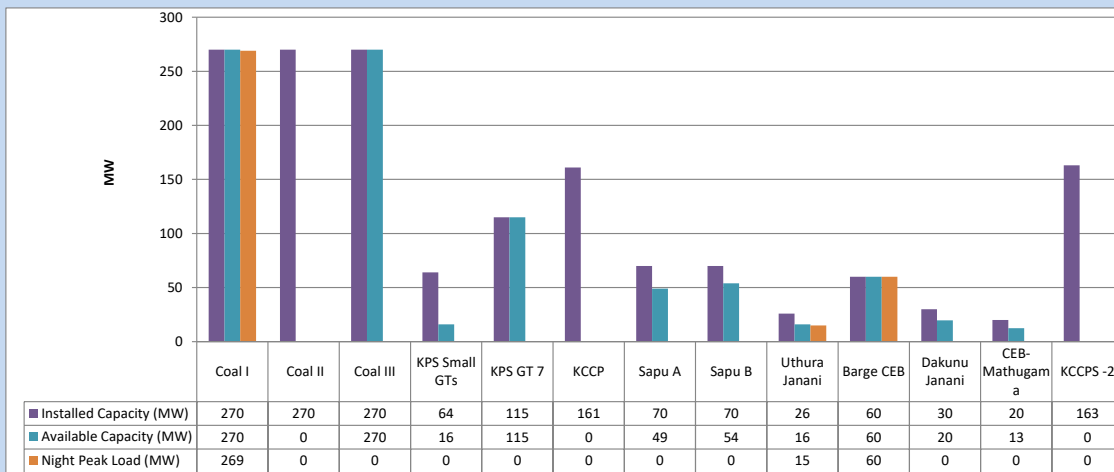
December 6, 2023



Available Generation is estimated based on plant availability at 6.00am on

December 7, 2023

### 4. CEB owned Thermal Plant Loading at the Night Peak

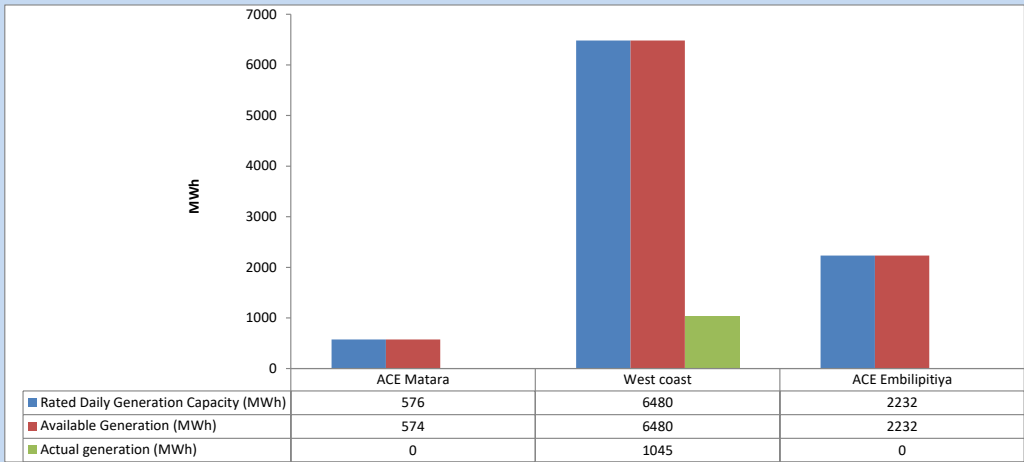


Plant availability is recorded at 6.00 am on

December 7, 2023

**5. IPP owned Thermal Plant Dispatch**

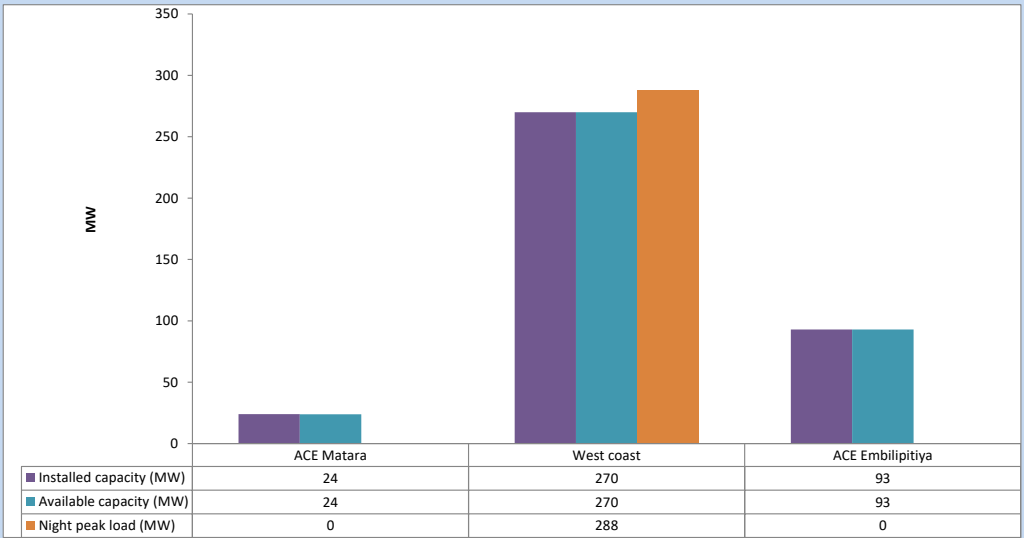
**December 6, 2023**



Available Generation is estimated based on plant availability at 6.00am on

December 7, 2023

**6. IPP owned Thermal Plant Loading at the Night Peak**

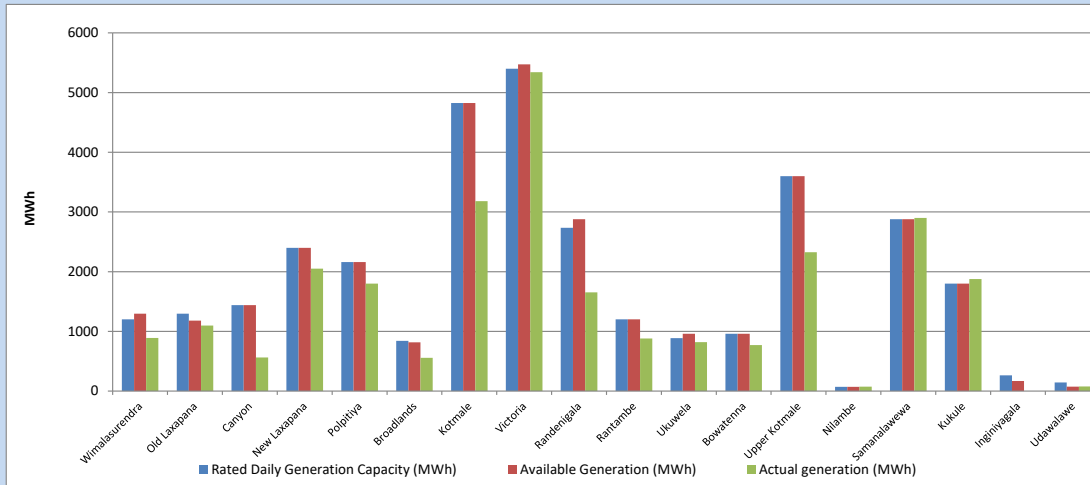


Plant availability is recorded at 6.00 am on

December 7, 2023

### 7. Major Hydro Plant Dispatch

December 6, 2023

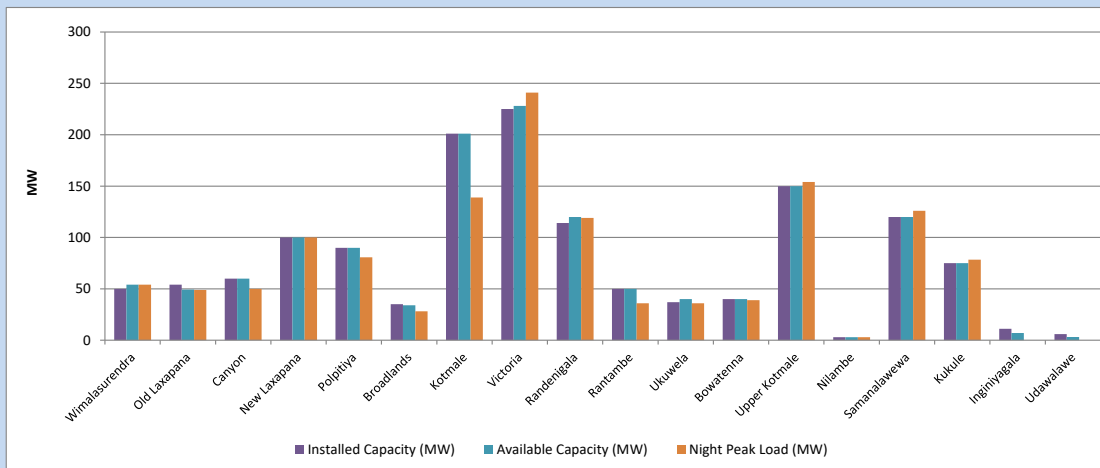


Available Generation is estimated based on plant availability at 6.00am on December 7, 2023  
 Broadlands power plant is operating in the Commissioning Stage

December 7, 2023

### 8. Major Hydro Plant Loading at Night Peak

December 6, 2023



Plant availability is recorded at 6.00 am on December 7, 2023  
 Broadlands power plant is operating in the Commissioning Stage

December 7, 2023

## 9. Summary of Major Plant performance

Table 05

Plant	Installed Capacity	Plant Availability	Night peak Load	Plant Dispatch
	(MW)	(MW)	(MW)	(MWh)
Wimalasurendra	50	54	54	891
Old Laxapana	54	49	49	1,096
Canyon	60	60	50	563
New Laxapana	100	100	100	2,050
Polpitiya	90	90	81	1,800
Broadlands	35	34	28	557
Kotmale	201	201	139	3,180
Victoria	225	228	241	5,341
Randenigala	114	120	119	1,653
Rantambe	50	50	36	879
Ukuwela	37	40	36	818
Bowatenna	40	40	39	770
Upper Kotmale	150	150	154	2,326
Nilambe	3	3	3	74
Samanalawewa	120	120	126	2,901
Kukule	75	75	78	1,876
Inginiyagala	11	7	0	0
Udawalawe	6	3	0	78
Puttalam Coal I	270	270	269	5,586
Puttalam Coal II	270	0	0	0
Puttalam Coal III	270	270	0	0
KPS Small GTs	64	16	0	0
KPS GT 7	115	115	0	0
KCCP	161	0	0	0
Sapugaskanda A	70	49	0	0
Sapugaskanda B	70	54	0	0
Uthura Janani	26	16	15	126
Barge CEB	60	60	60	650
CEB-Hambantota	30	20	0	0
CEB-Mathugama	20	13	0	0
ACE Matara	24	24	0	0
Asia Power	50	0	0	0
KCCPS -2	163	0	0	0
West Coast	270	270	288	1,045
Nothern Power	36	0	0	0
ACE Embilipitiya	93	93	0	0
<b>Total</b>	<b>3,483</b>	<b>2,693</b>	<b>2,203</b>	<b>39,742</b>

Plant availability is the availability recorded at 6 am on

December 7, 2023

### 10. Contribution to the Night Peak in MW

December 6, 2023

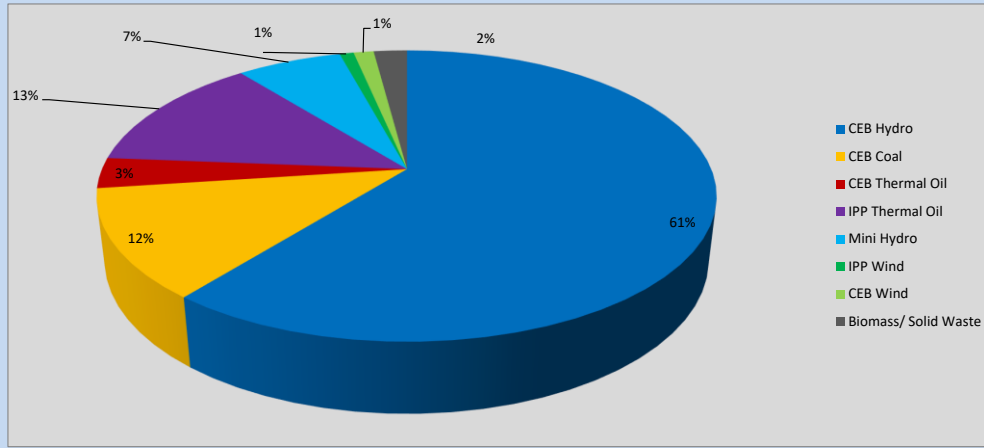


Table 06

CEB Hydro	1347	MW
CEB Coal	269	MW
CEB Thermal Oil	75	MW
IPP Thermal Oil	288	MW
Mini Hydro (Telemetered)	145	MW
IPP Wind	19.4	MW
CEB Wind	27.8	MW
Biomass/ Solid Waste	46	MW

### Recorded Peak Demand Data

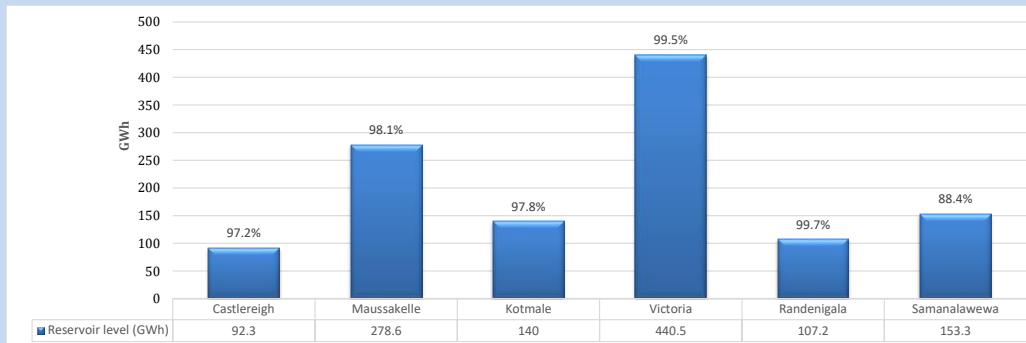
Table 07

Night Peak*	2,218	MW
Day Peak Maximum Demand	1,950	MW
Day Peak Minimum Demand	1,514	MW
Off Peak Minimum Demand	1,167	MW

Above figures are excluding contribution from roof top solar, non telemetered solar and mini hydro plants

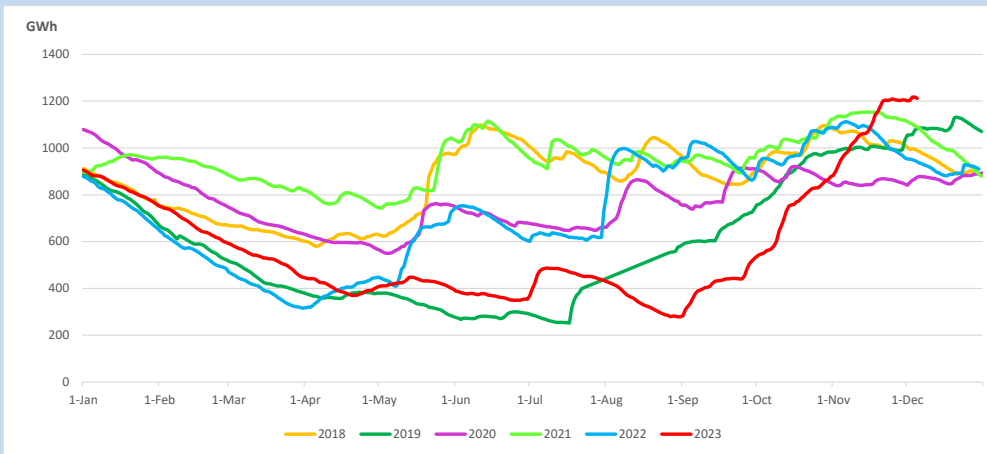
### Reservoir Levels -

as at 06.00 Hr on December 7, 2023

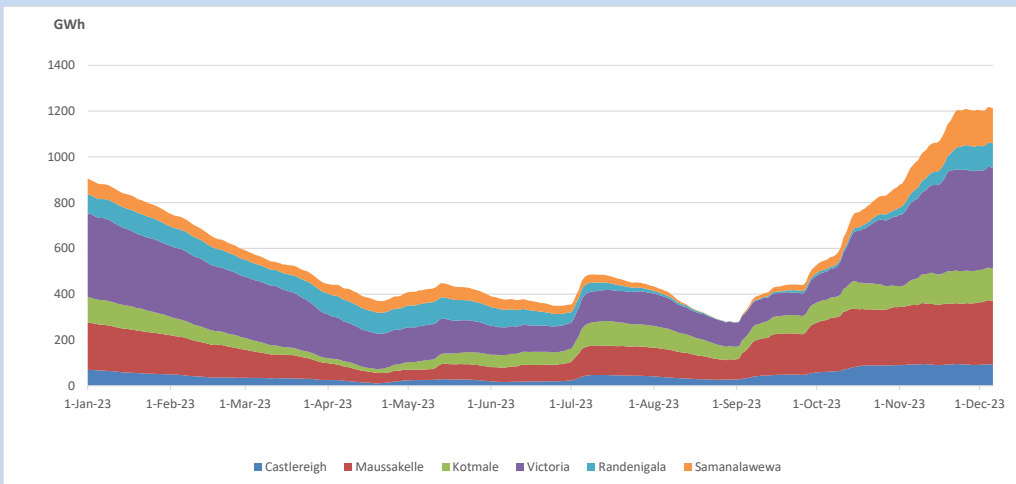


Total Reservoir Level 1211.9 GWh  
 % of Total capacity 97.3%

### 11. Comparison of Total Reservoir Storage Levels with Past Years

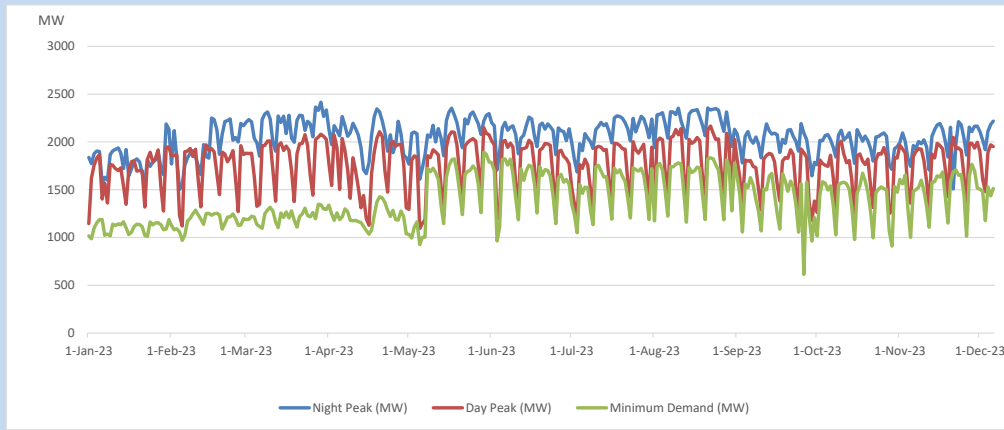


### 12. Variation of Major Hydro Reservoir Levels in the current year (GWh)





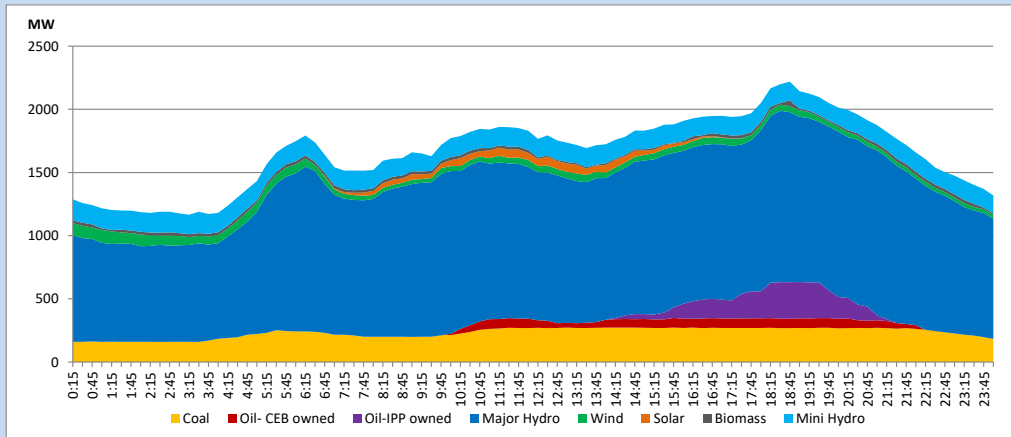
### 13. Variation of Demand during the current year



The above figures are excluding contribution from roof top solar, non telemetered solar and mini hydro plants

### 14. Daily Load Curve

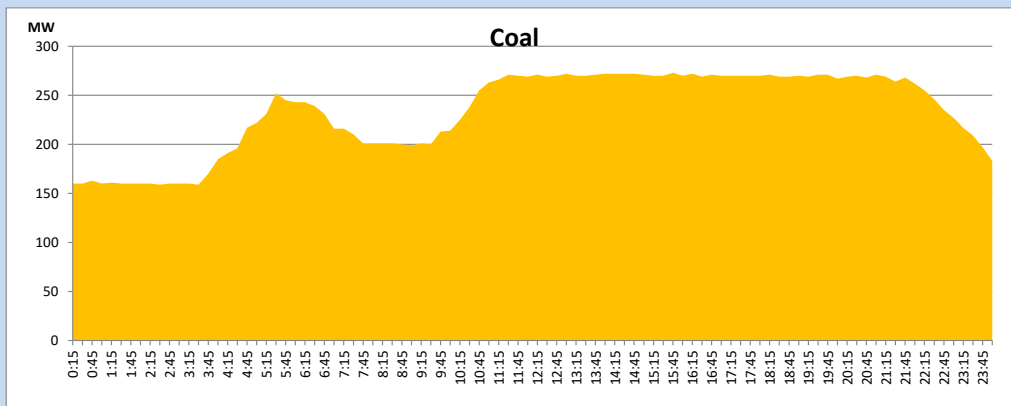
December 6, 2023



Solar and wind data is based on Telemetered Power Stations only

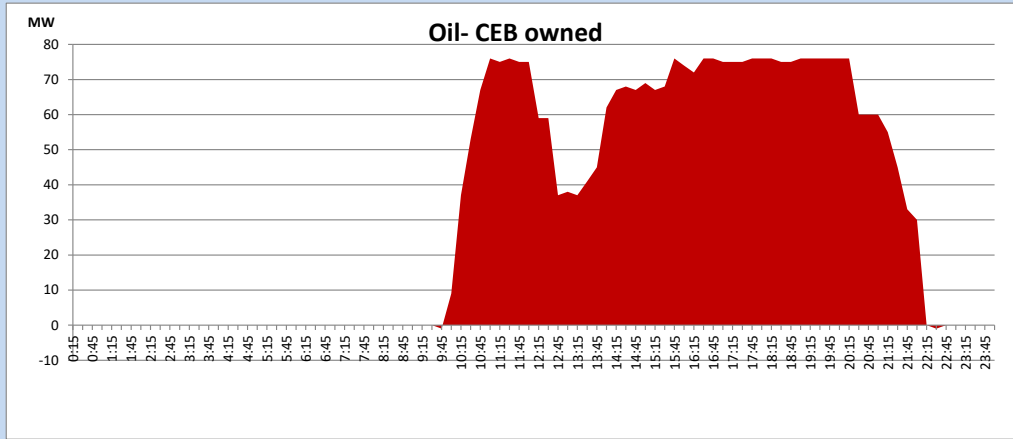
### Coal Generation during

December 6, 2023



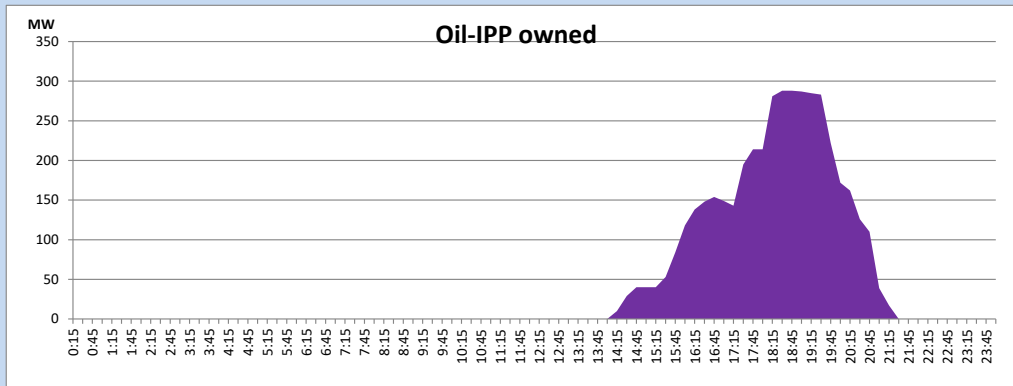
CEB Oil Plant Generation during

December 6, 2023



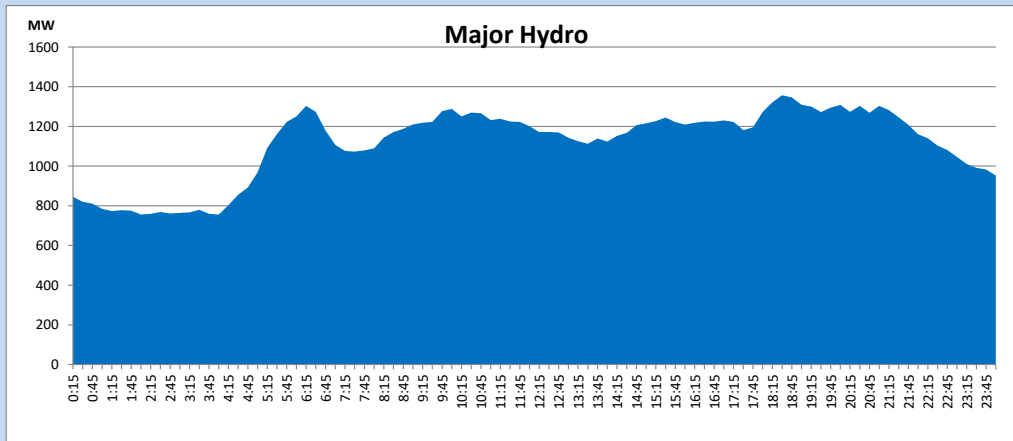
IPP Oil Plant Generation during

December 6, 2023



Major Hydro Generation during

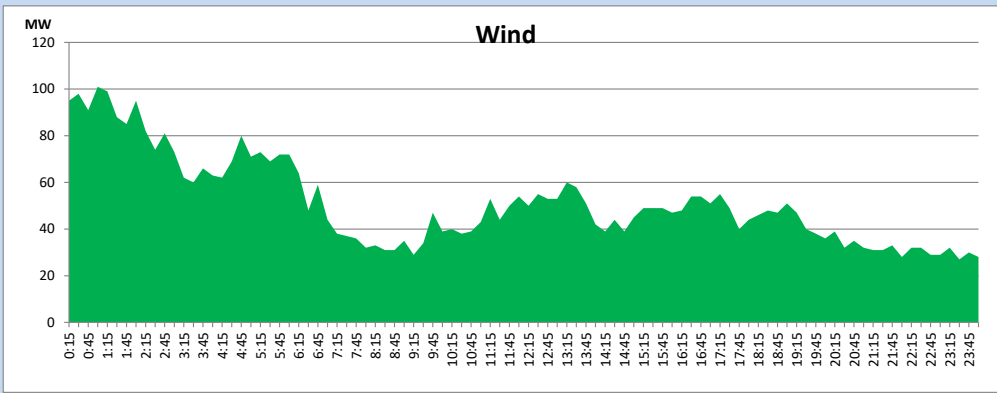
December 6, 2023



## Wind Generation during

December 6, 2023

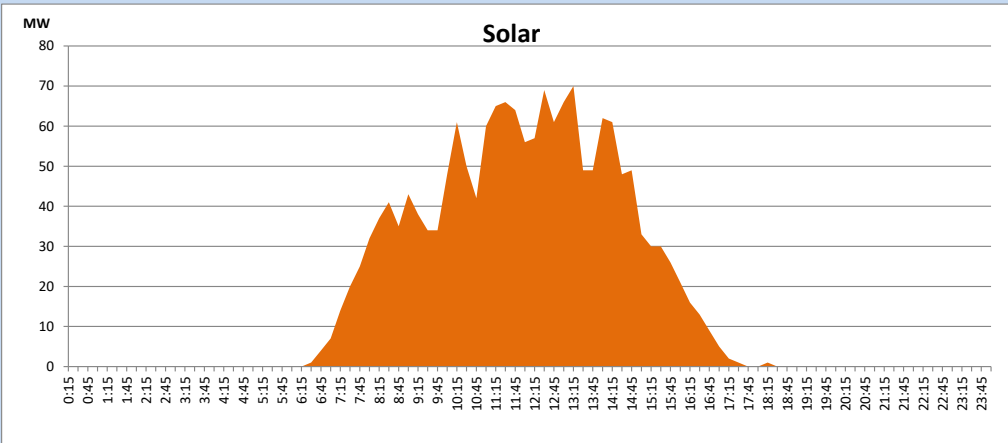
Based on Telemetered Power Stations only



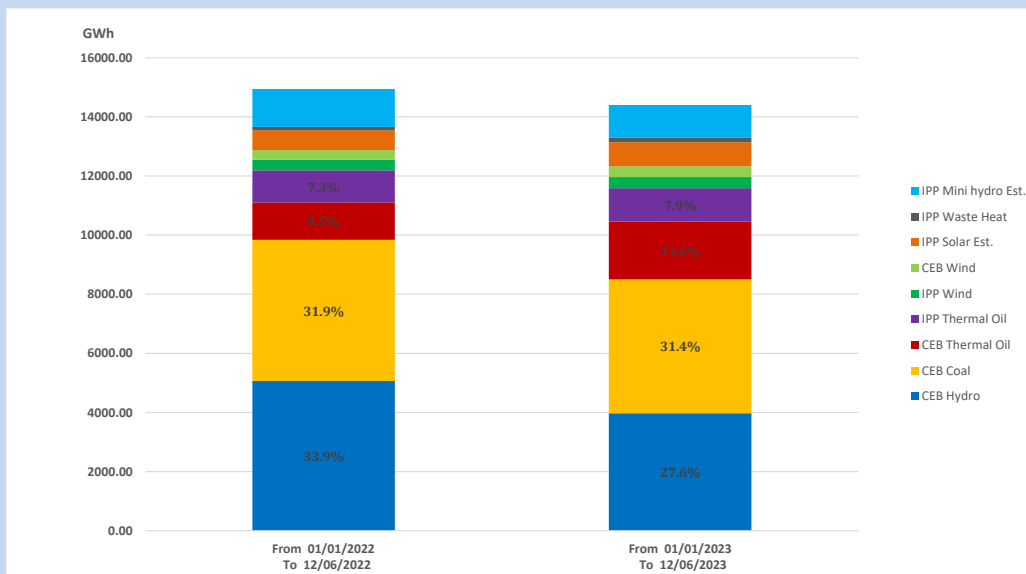
## Solar Generation during

December 6, 2023

Based on Telemetered Power Stations only



## 15. Cumulative Dispatch Comparison with Last Year



### Cumulative dispatch

From 01/01/2022 To 12/06/2022

14947 GWh

From 01/01/2023 To 12/06/2023

14400 GWh

The above figures are including contribution from roof top solar, non telemetered solar and mini hydro plants (figures have been adjusted based on the data from the CEB monthly review reports.)

Thermal Plant Fuel types

Table 08

Power Station	Primary Fuel
CEB Thermal	
Sapugaskanda 1	Heavy Fuel
Sapugaskanda 2	Heavy Fuel
Kelanitissa Small Gas Turbines	Auto Diesel
GT 7 - Kelanitissa	Auto Diesel
Kelanitissa CCY	Naphtha or Diesel
Lakvijaya 1	Coal
Lakvijaya 2	Coal
Lakvijaya 3	Coal
Uthuru Janani	Heavy Fuel
Barge CEB	Heavy Fuel
KCCPS -2	Auto Diesel

Power Station	Primary Fuel
Private Thermal	
West Coast	Auto Diesel / Heavy Fuel
ACE Matara	Heavy Fuel
ACE Embilipitiya	Heavy Fuel

Major Incidents reported during the day

December 6, 2023

- 1) Kukule pond spilling continues to the present hour.