

Generation and Reservoirs Statistics

December 4, 2023



PUBLIC UTILITIES COMMISSION OF SRI LANKA

1. Daily Generation Mix in MWh

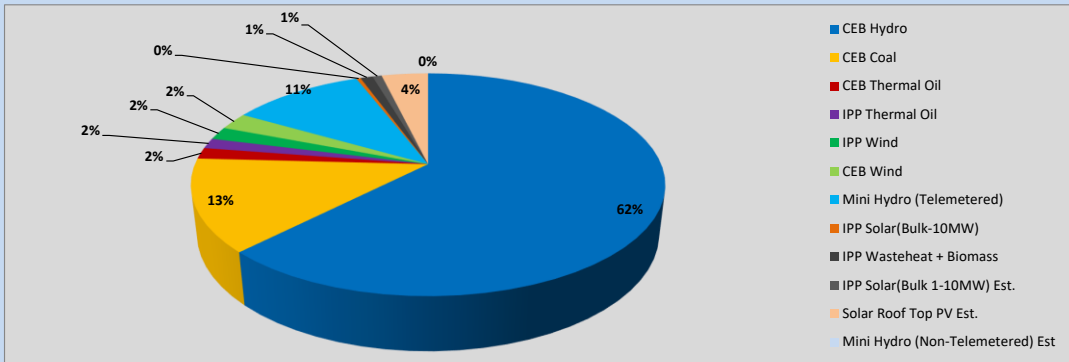


Table 01

	Generation (MWh)
CEB Hydro	25,369
CEB Coal	5,463
CEB Thermal Oil	654
IPP Thermal Oil	613
IPP Wind	760
CEB Wind	1,008
Mini Hydro (Telemetered)	4,391
IPP Solar (Bulk)	140
IPP Waste heat + Biomass	409
Total Generation (Excluding estimated figures)	38,807
* Estimated unserved energy	0
* Estimated Mini Hydro (Non telemetered)	0
* Estimated IPP Solar PV (Bulk 1-10MW)	304
* Estimated Solar Roof Top PV	1540
Total Generation (Including estimated figures)	40,651

* Estimated figures of CEB generation report

Table 02

	Installed Capacity (MW)
CEB Hydro	1409
CEB Coal	810
CEB Thermal Oil	781
IPP Thermal Oil (West Coast, ACE Matara and ACE Embilipitiya)	387
IPP Wind	148
CEB Wind	100
Mini Hydro	422
IPP Waste heat + Biomass	50
IPP Solar	136
Rooftop Solar (Ordinary)	277
Rooftop Solar (LT Bulk)	263
Rooftop Solar (HT Bulk)	70

Data Source - Monthly Review Report [Aug-2023]

2. Cumulative Dispatch

Following data excludes the contribution from roof top solar, non telemetered solar and mini hydro plants

Table 03 - Current Month

Category	Dispatch (GWh)	
CEB Hydro	100	65.00%
CEB Coal	20	13.25%
CEB Thermal Oil	2	1.08%
IPP Thermal	2	1.27%
SPP Wind	2	1.51%
CEB Wind	3	1.84%
Mini Hydro *	15	9.83%
IPP Solar *	8	5.19%
IPP Waste heat + BMP	2	1.04%
Total	154	

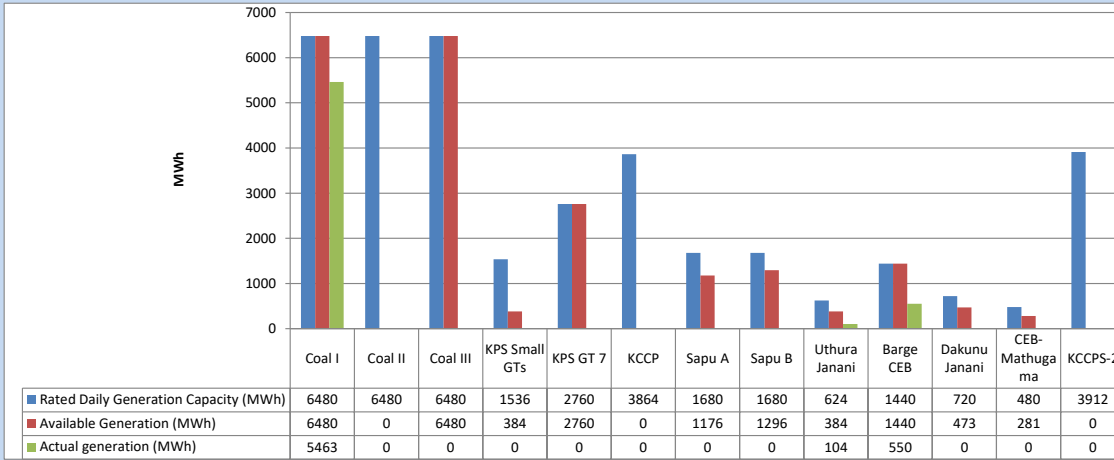
Table 04 - Current Year

Category	Dispatch (GWh)	
CEB Hydro	3,924	27.43%
CEB Coal	4,516	31.57%
CEB Thermal Oil	1,957	13.68%
IPP Thermal	1,129	7.89%
SPP Wind	375	2.62%
CEB Wind	366	2.56%
Mini Hydro *	1,088	7.60%
IPP Solar *	811	5.67%
IPP Waste heat	141	0.99%
Total	14,307	

*Including estimated contribution from non telemetered plants

3. CEB owned Thermal Plant Dispatch

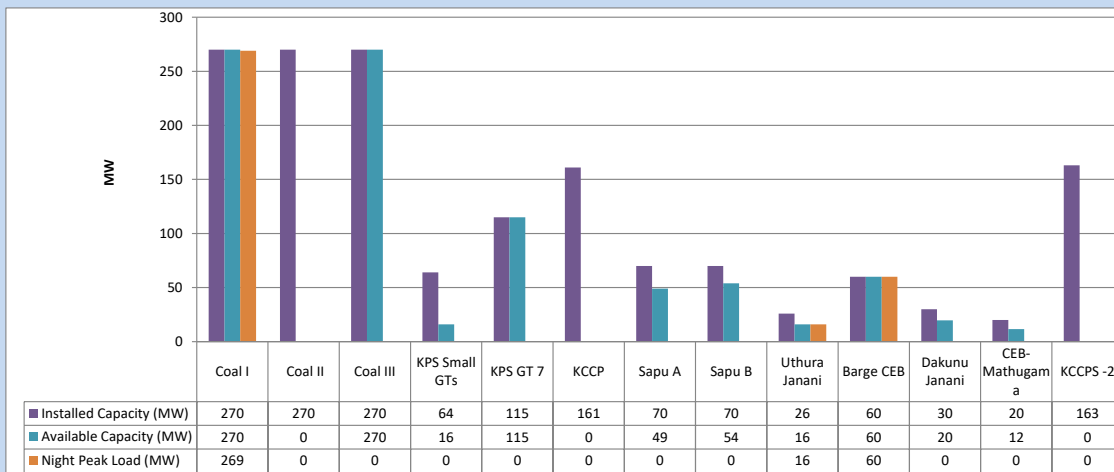
December 4, 2023



Available Generation is estimated based on plant availability at 6.00am on

December 5, 2023

4. CEB owned Thermal Plant Loading at the Night Peak

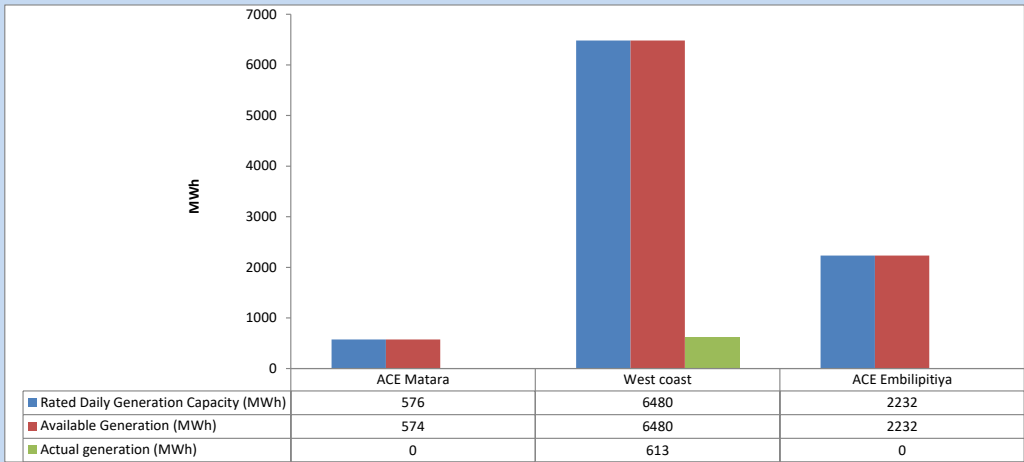


Plant availability is recorded at 6.00 am on

December 5, 2023

5. IPP owned Thermal Plant Dispatch

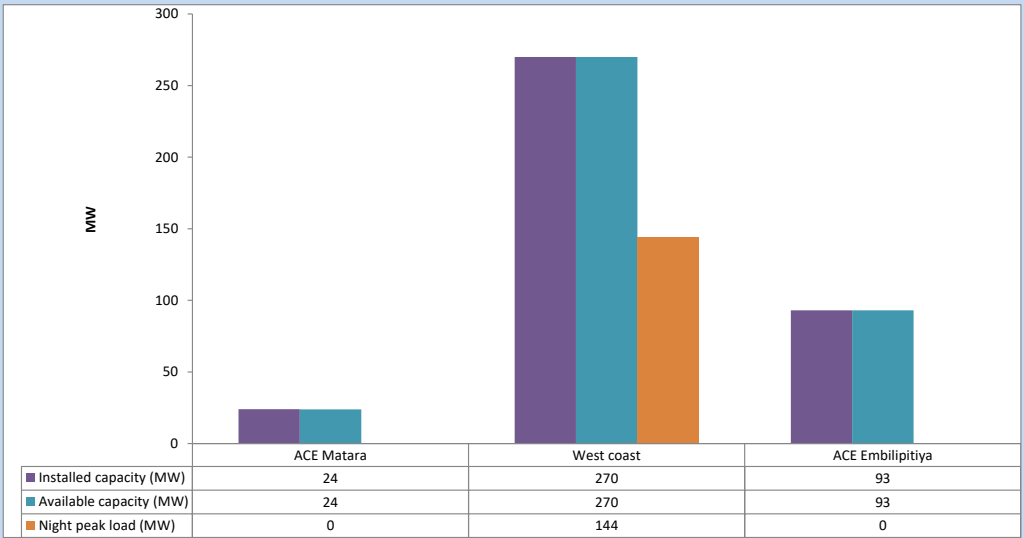
December 4, 2023



Available Generation is estimated based on plant availability at 6.00am on

December 5, 2023

6. IPP owned Thermal Plant Loading at the Night Peak

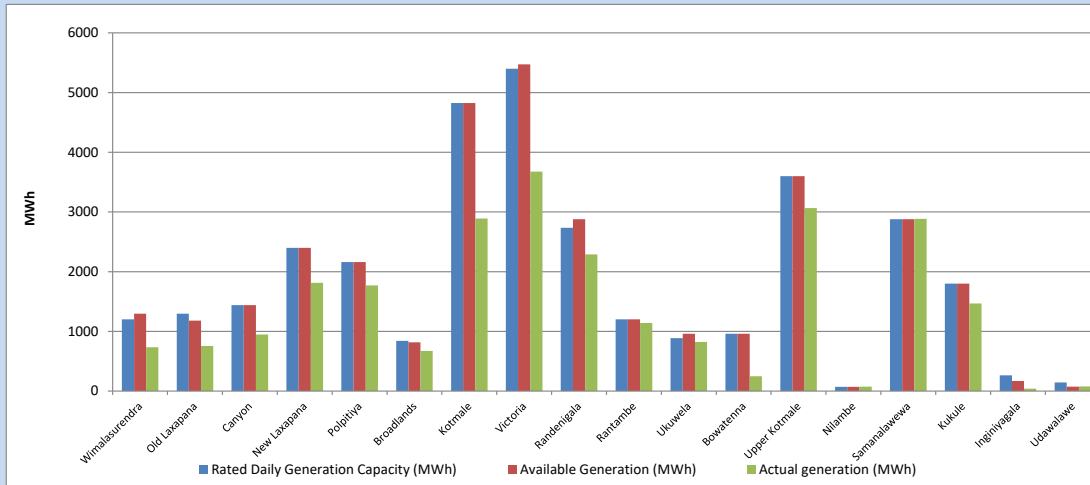


Plant availability is recorded at 6.00 am on

December 5, 2023

7. Major Hydro Plant Dispatch

December 4, 2023

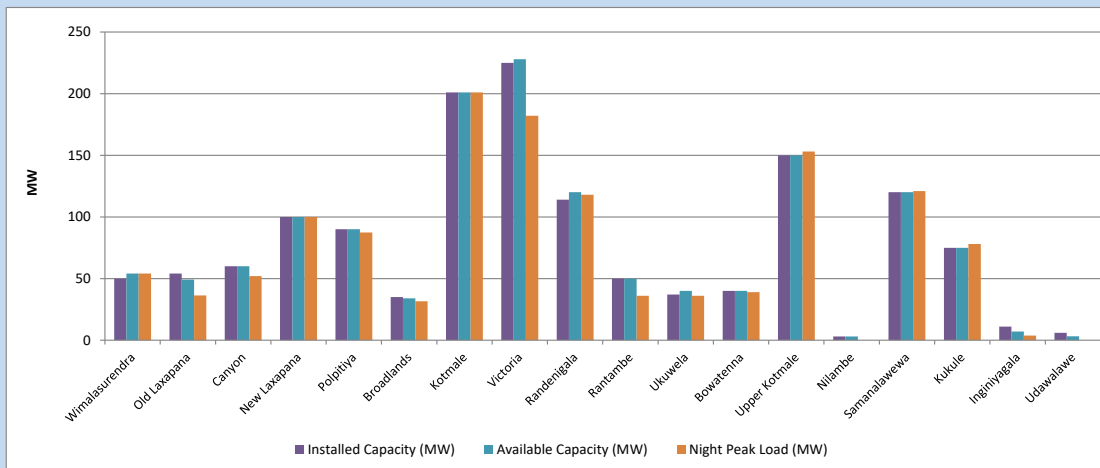


Available Generation is estimated based on plant availability at 6.00am on December 5, 2023
Broadlands power plant is operating in the Commissioning Stage

December 5, 2023

8. Major Hydro Plant Loading at Night Peak

December 4, 2023



Plant availability is recorded at 6.00 am on December 5, 2023
Broadlands power plant is operating in the Commissioning Stage

December 5, 2023

9. Summary of Major Plant performance

Table 05

Plant	Installed Capacity	Plant Availability	Night peak Load	Plant Dispatch
	(MW)	(MW)	(MW)	(MWh)
Wimalasurendra	50	54	54	735
Old Laxapana Canyon	54	49	36	756
New Laxapana	60	60	52	948
Polpitiya	100	100	100	1,813
Broadlands	90	90	87	1,770
Kotmale	35	34	32	674
Victoria	201	201	201	2,890
Randenigala	225	228	182	3,675
Rantambe	114	120	118	2,290
Ukuwela	50	50	36	1,141
Bowatenna	37	40	36	821
Upper Kotmale	40	40	39	249
Nilambe	150	150	153	3,065
Samanalawewa	3	3	0	75
Kukule	120	120	121	2,885
Inginiyagala	75	75	78	1,466
Udawalawe	11	7	4	39
Puttalam Coal I	6	3	0	78
Puttalam Coal II	270	270	269	5,463
Puttalam Coal III	270	0	0	0
KPS Small GTs	270	270	0	0
KPS GT 7	64	16	0	0
KCCP	115	115	0	0
Sapugaskanda A	161	0	0	0
Sapugaskanda B	70	49	0	0
Uthura Janani	70	54	0	0
Barge CEB	26	16	16	104
CEB-Hambantota	60	60	60	550
CEB-Mathugama	30	20	0	0
ACE Matara	20	12	0	0
Asia Power	24	24	0	0
KCCPS -2	50	0	0	0
West Coast	163	0	0	0
Nothern Power	270	270	144	613
ACE Embilipitiya	36	0	0	0
Total	93	93	0	0
	3,483	2,693	2,098	38,808

Plant availability is the availability recorded at 6 am on

December 5, 2023

10. Contribution to the Night Peak in MW

December 4, 2023

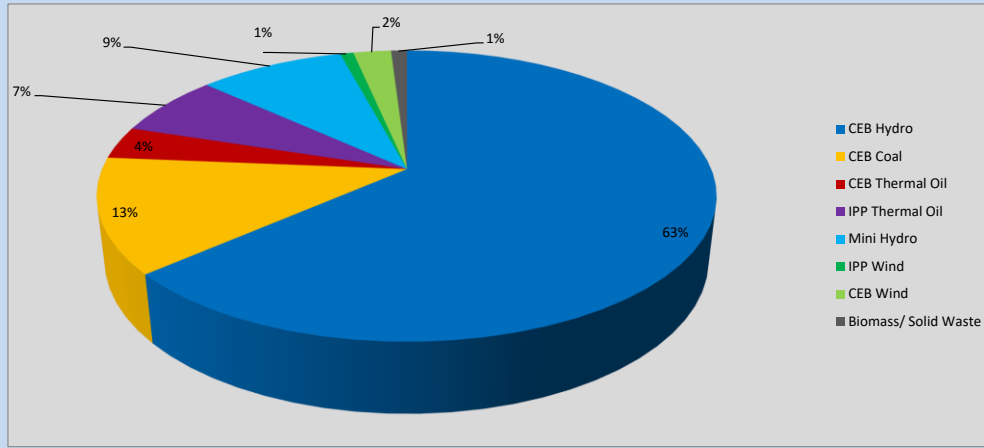


Table 06

CEB Hydro	1342	MW
CEB Coal	269	MW
CEB Thermal Oil	76	MW
IPP Thermal Oil	144	MW
Mini Hydro (Telemetered)	192	MW
IPP Wind	17.4	MW
CEB Wind	49.6	MW
Biomass/ Solid Waste	21	MW

Recorded Peak Demand Data

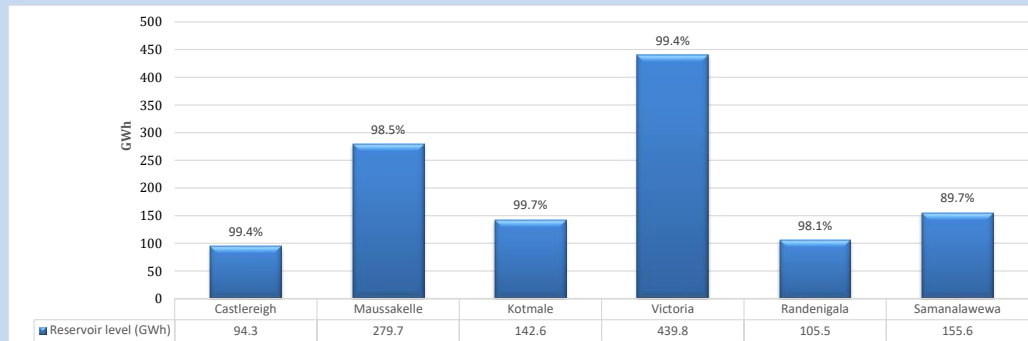
Table 07

Night Peak*	2,111	MW
Day Peak Maximum Demand	1,889	MW
Day Peak Minimum Demand	1,530	MW
Off Peak Minimum Demand	1,060	MW

Above figures are excluding contribution from roof top solar, non telemetered solar and mini hydro plants

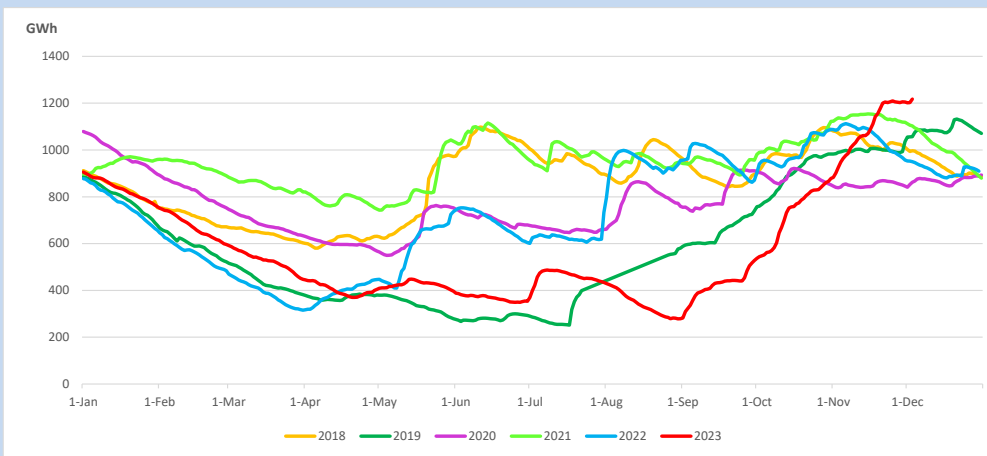
Reservoir Levels -

as at 06.00 Hr on December 5, 2023

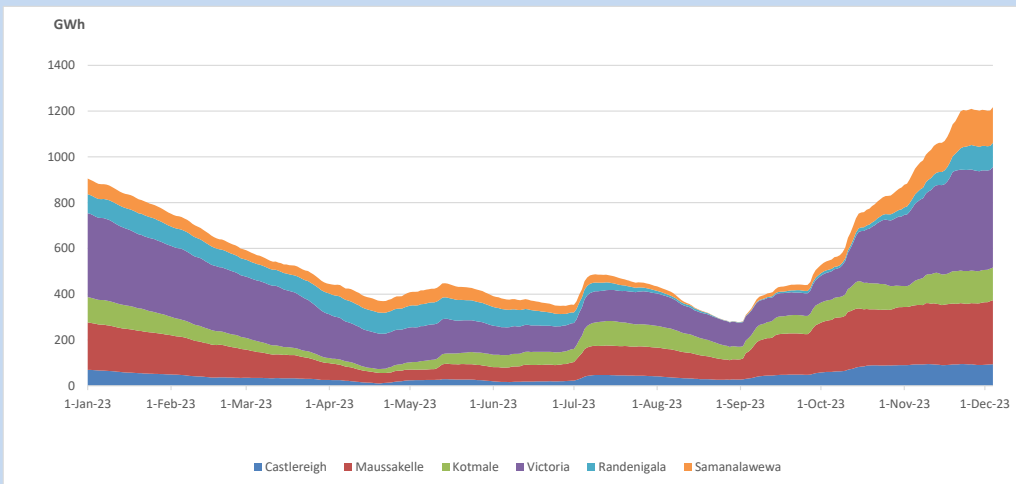


Total Reservoir Level 1217.5 GWh
 % of Total capacity 97.8%

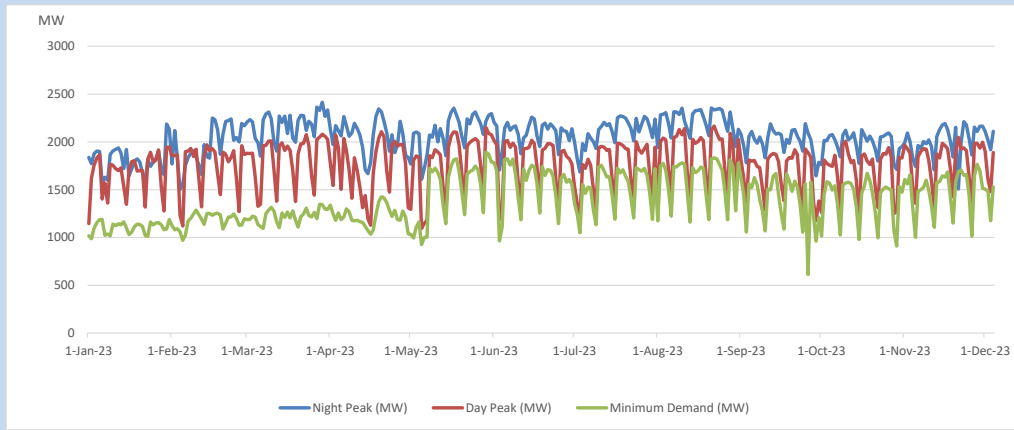
11. Comparison of Total Reservoir Storage Levels with Past Years



12. Variation of Major Hydro Reservoir Levels in the current year (GWh)



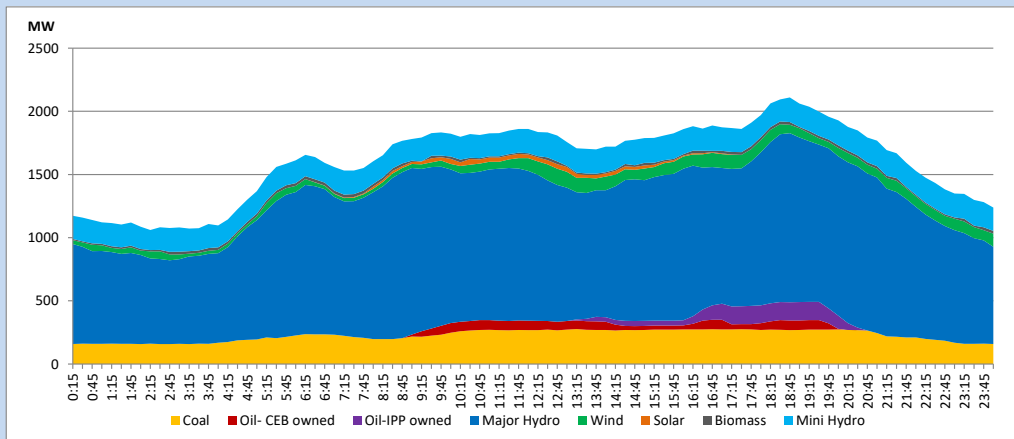
13. Variation of Demand during the current year



The above figures are excluding contribution from roof top solar, non telemetered solar and mini hydro plants

14. Daily Load Curve

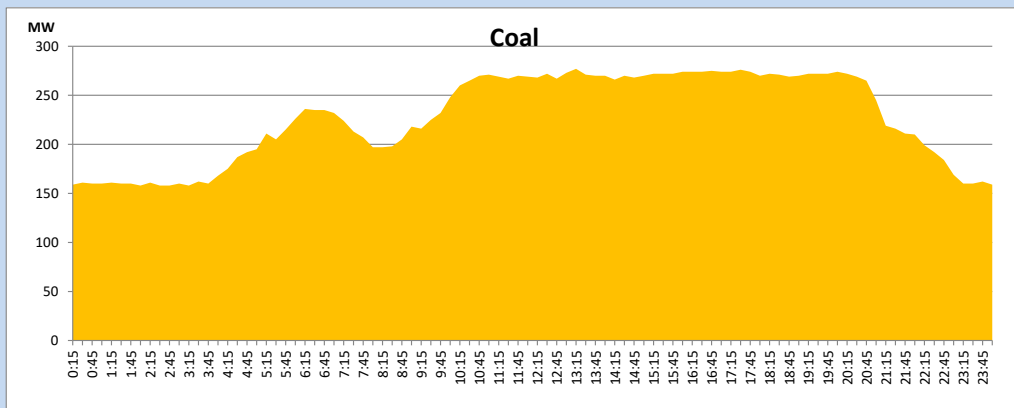
December 4, 2023



Solar and wind data is based on Telemetered Power Stations only

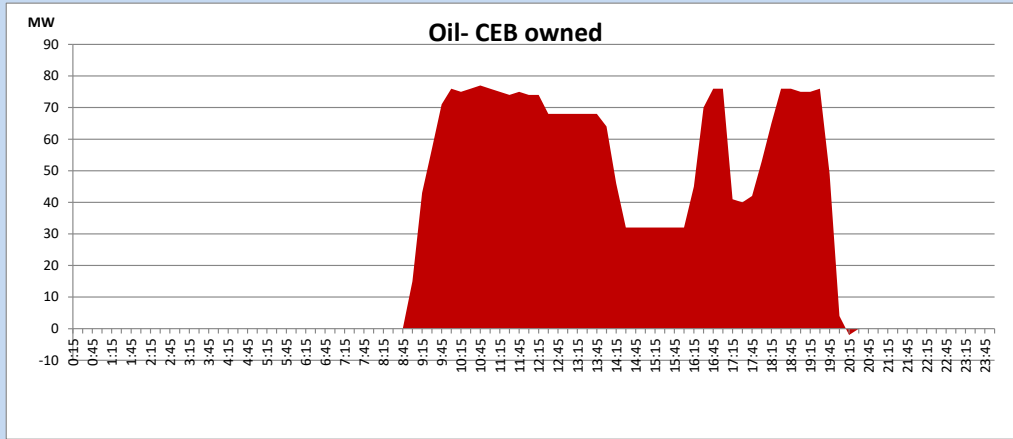
Coal Generation during

December 4, 2023



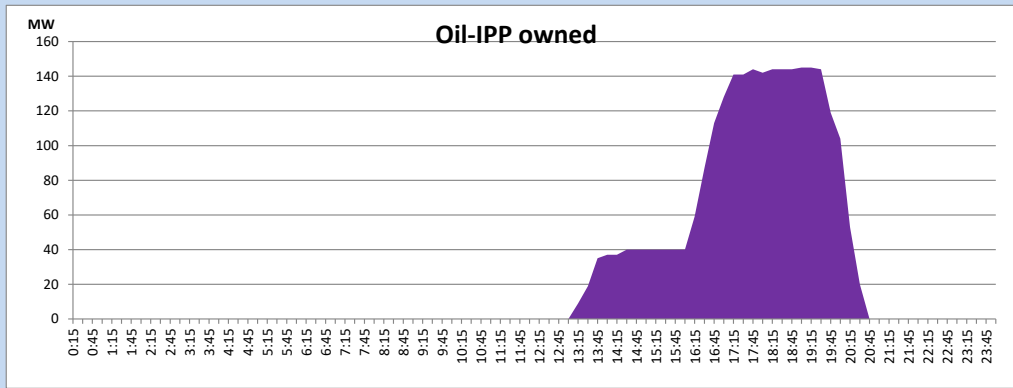
CEB Oil Plant Generation during

December 4, 2023



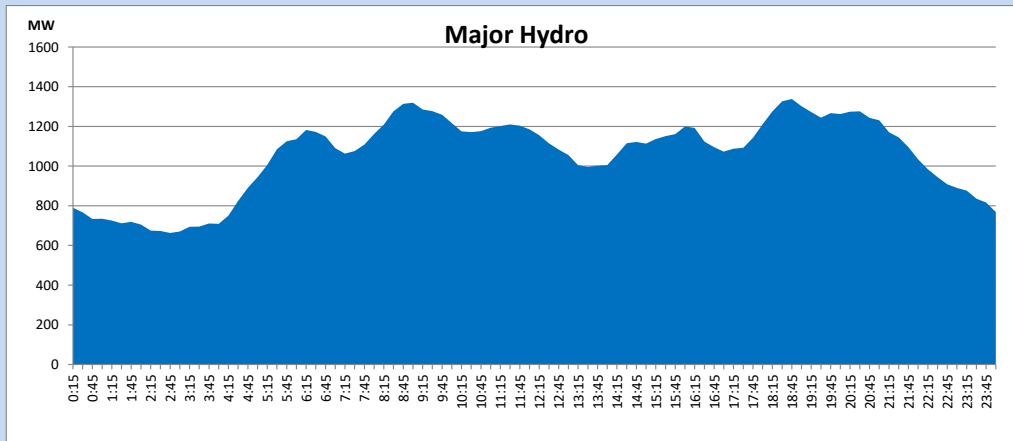
IPP Oil Plant Generation during

December 4, 2023



Major Hydro Generation during

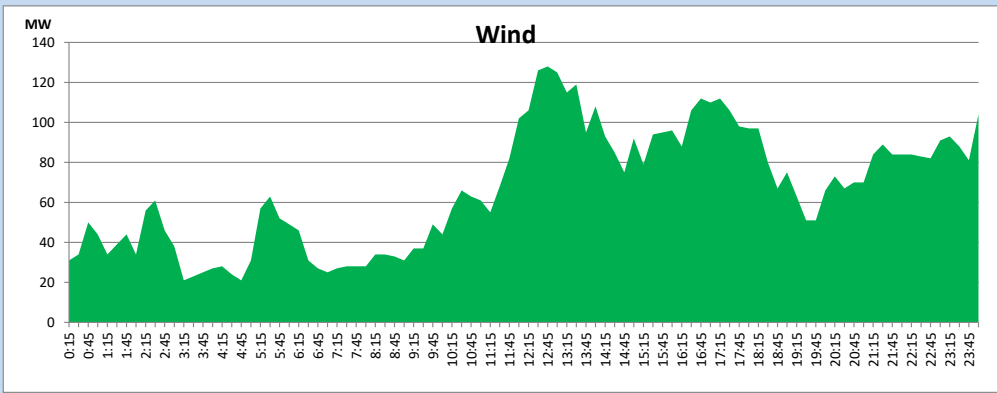
December 4, 2023



Wind Generation during

December 4, 2023

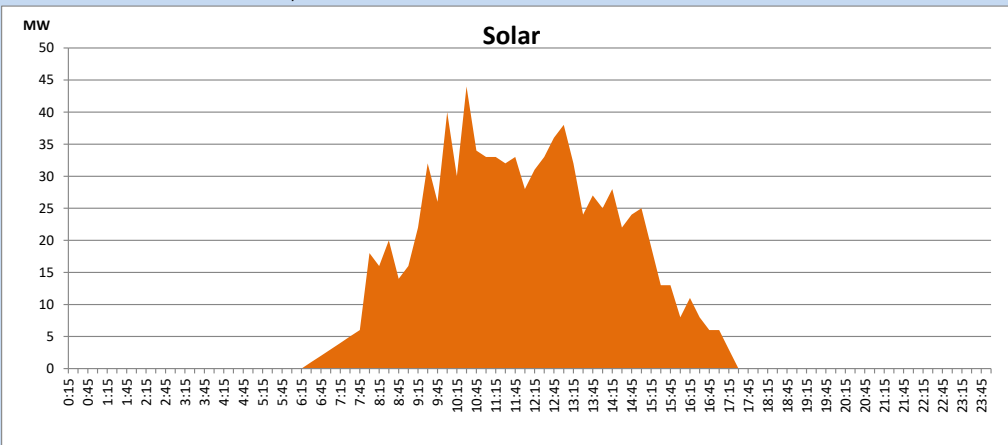
Based on Telemetered Power Stations only



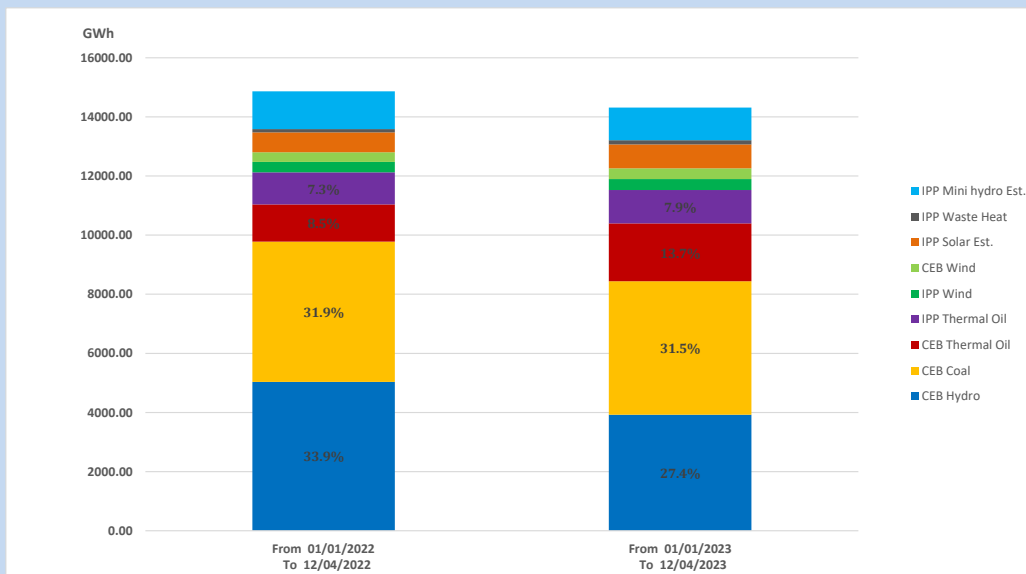
Solar Generation during

December 4, 2023

Based on Telemetered Power Stations only



15. Cumulative Dispatch Comparison with Last Year



Cumulative dispatch

From 01/01/2022 To 12/04/2022

14866 GWh

From 01/01/2023 To 12/04/2023

14318 GWh

The above figures are including contribution from roof top solar, non telemetered solar and mini hydro plants (figures have been adjusted based on the data from the CEB monthly review reports.)

Thermal Plant Fuel types

Table 08

Power Station	Primary Fuel
CEB Thermal	
Sapugaskanda 1	Heavy Fuel
Sapugaskanda 2	Heavy Fuel
Kelanitissa Small Gas Turbines	Auto Diesel
GT 7 - Kelanitissa	Auto Diesel
Kelanitissa CCY	Naphtha or Diesel
Lakvijaya 1	Coal
Lakvijaya 2	Coal
Lakvijaya 3	Coal
Uthuru Janani	Heavy Fuel
Barge CEB	Heavy Fuel
KCCPS -2	Auto Diesel

Power Station	Primary Fuel
Private Thermal	
West Coast	Auto Diesel / Heavy Fuel
ACE Matara	Heavy Fuel
ACE Embilipitiya	Heavy Fuel

Major Incidents reported during the day

December 4, 2023

- 1) Upper Kothmale pond spilling started at 8:54hrs and continues to the present hour.
- 2) Kukule pond spilling started at 10:28hrs and continues to the present hour.
- 3) Kothmale reservoir spilling started at 13:40hrs and stopped at 21:40hrs.