

Generation and Reservoirs Statistics

December 2, 2023



PUBLIC UTILITIES COMMISSION OF SRI LANKA

1. Daily Generation Mix in MWh

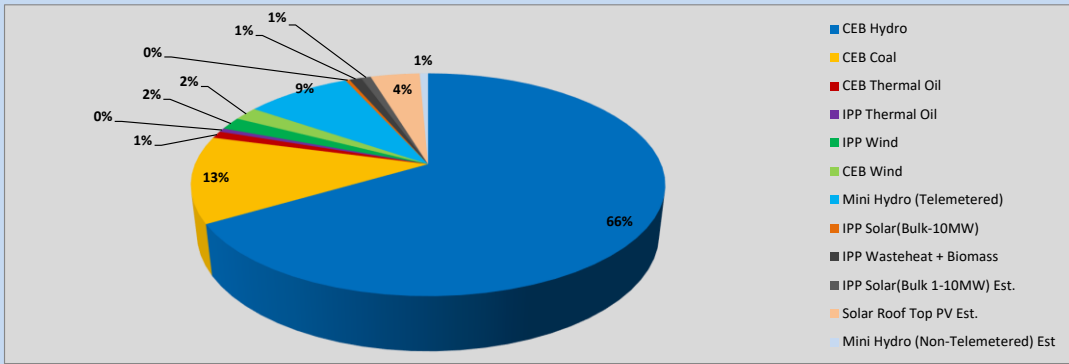


Table 01

	Generation (MWh)
CEB Hydro	25,552
CEB Coal	4,828
CEB Thermal Oil	396
IPP Thermal Oil	215
IPP Wind	707
CEB Wind	761
Mini Hydro (Telemetered)	3,307
IPP Solar (Bulk)	132
IPP Waste heat + Biomass	377
Total Generation (Excluding estimated figures)	36,275
* Estimated unserved energy	0
* Estimated Mini Hydro (Non telemetered)	263
* Estimated IPP Solar PV (Bulk 1-10MW)	304
* Estimated Solar Roof Top PV	1540
Total Generation (Including estimated figures)	38,382

* Estimated figures of CEB generation report

Table 02

	Installed Capacity (MW)
CEB Hydro	1409
CEB Coal	810
CEB Thermal Oil	781
IPP Thermal Oil (West Coast, ACE Matara and ACE Embilipitiya)	387
IPP Wind	148
CEB Wind	100
Mini Hydro	422
IPP Waste heat + Biomass	50
IPP Solar	136
Rooftop Solar (Ordinary)	277
Rooftop Solar (LT Bulk)	263
Rooftop Solar (HT Bulk)	70

Data Source - Monthly Review Report [Aug-2023]

2. Cumulative Dispatch

Following data excludes the contribution from roof top solar, non telemetered solar and mini hydro plants

Table 03 - Current Month

Category	Dispatch (GWh)	
CEB Hydro	52	65.67%
CEB Coal	11	13.31%
CEB Thermal Oil	1	1.06%
IPP Thermal	1	1.70%
SPP Wind	1	1.35%
CEB Wind	1	1.80%
Mini Hydro *	7	9.10%
IPP Solar *	4	5.01%
IPP Waste heat + BMP	1	1.00%
Total	79	

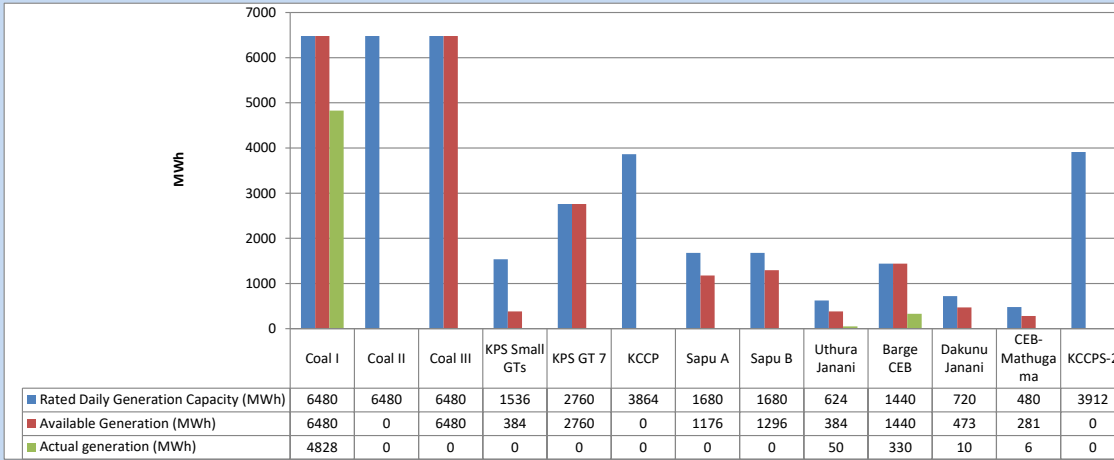
Table 04 - Current Year

Category	Dispatch (GWh)	
CEB Hydro	3,876	27.23%
CEB Coal	4,506	31.66%
CEB Thermal Oil	1,956	13.74%
IPP Thermal	1,129	7.93%
SPP Wind	374	2.63%
CEB Wind	364	2.56%
Mini Hydro *	1,080	7.59%
IPP Solar *	807	5.67%
IPP Waste heat	140	0.99%
Total	14,232	

*Including estimated contribution from non telemetered plants

3. CEB owned Thermal Plant Dispatch

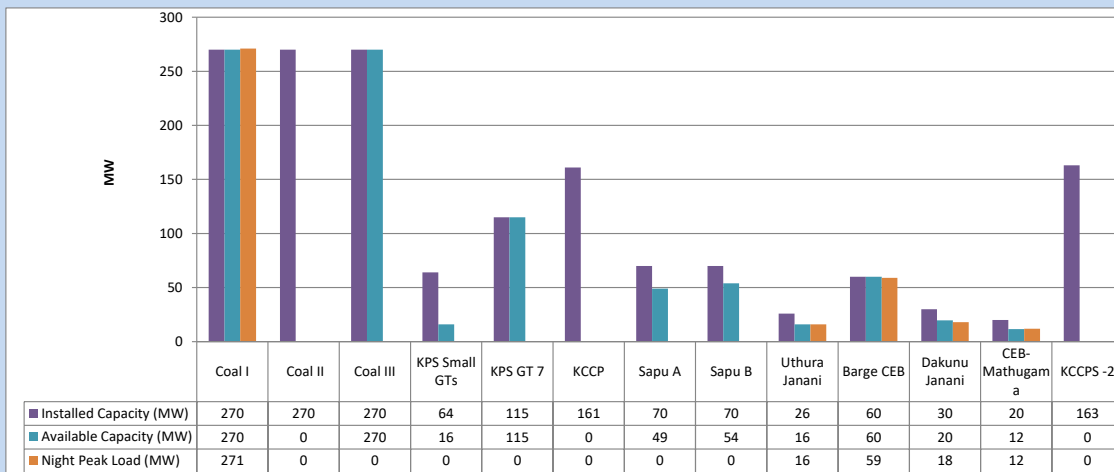
December 2, 2023



Available Generation is estimated based on plant availability at 6.00am on

December 3, 2023

4. CEB owned Thermal Plant Loading at the Night Peak

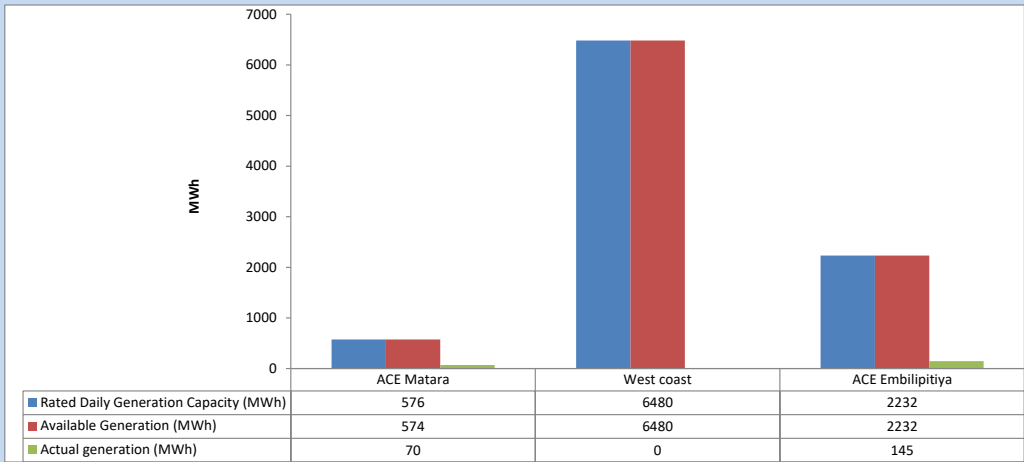


Plant availability is recorded at 6.00 am on

December 3, 2023

5. IPP owned Thermal Plant Dispatch

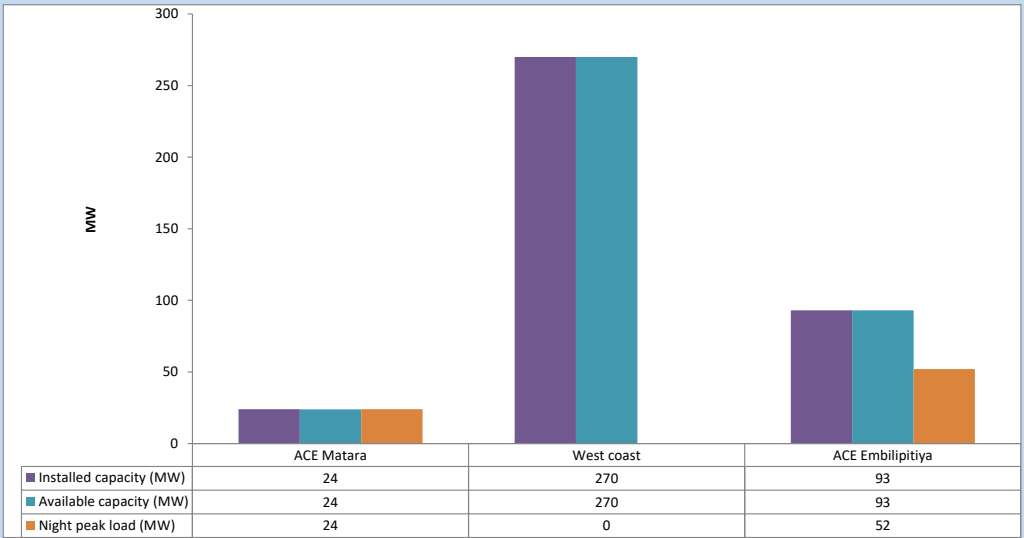
December 2, 2023



Available Generation is estimated based on plant availability at 6.00am on

December 3, 2023

6. IPP owned Thermal Plant Loading at the Night Peak

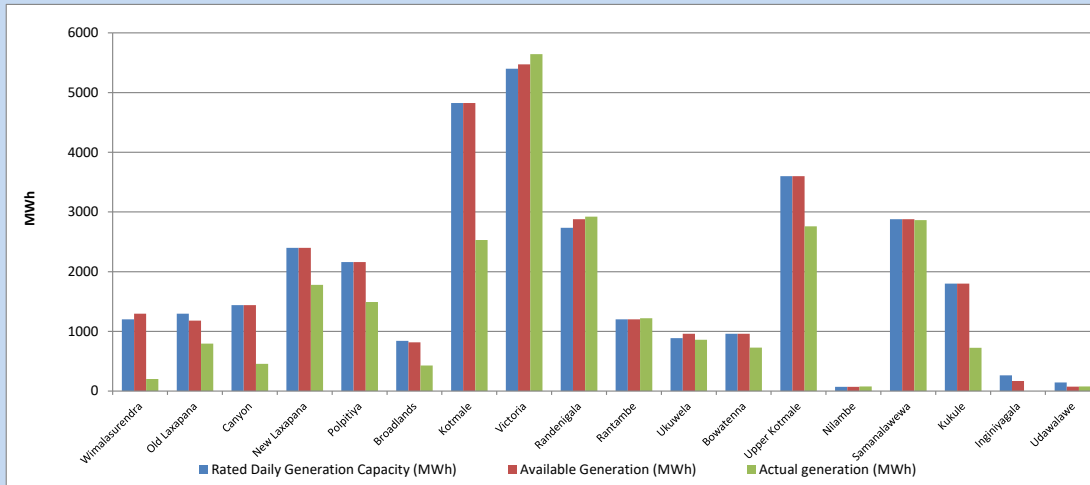


Plant availability is recorded at 6.00 am on

December 3, 2023

7. Major Hydro Plant Dispatch

December 2, 2023

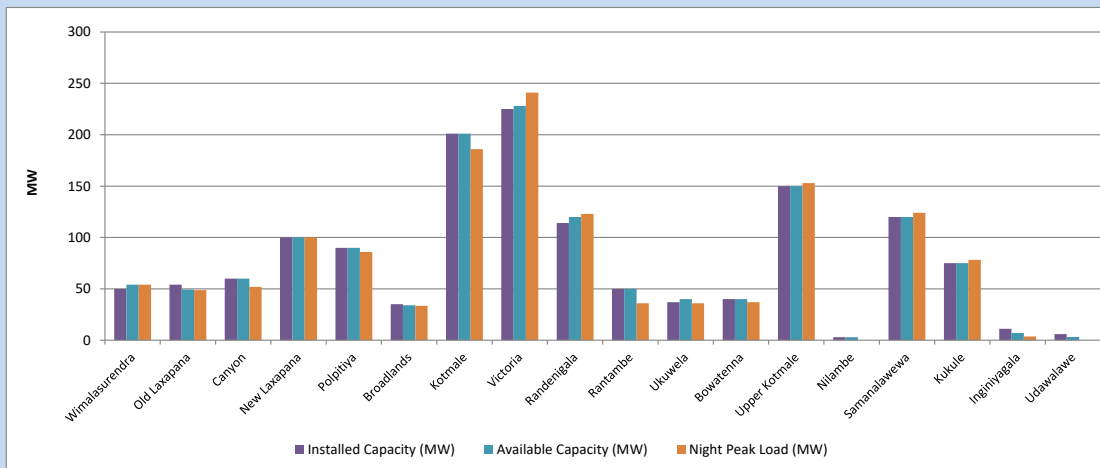


Available Generation is estimated based on plant availability at 6.00am on December 3, 2023
Broadlands power plant is operating in the Commissioning Stage

December 3, 2023

8. Major Hydro Plant Loading at Night Peak

December 2, 2023



Plant availability is recorded at 6.00 am on December 3, 2023
Broadlands power plant is operating in the Commissioning Stage

December 3, 2023

9. Summary of Major Plant performance

Table 05

Plant	Installed Capacity	Plant Availability	Night peak Load	Plant Dispatch
	(MW)	(MW)	(MW)	(MWh)
Wimalasurendra	50	54	54	203
Old Laxapana Canyon	54	49	49	794
New Laxapana	60	60	52	456
Polpitiya	100	100	100	1,779
Broadlands	90	90	86	1,490
Kotmale	35	34	33	428
Kotmale	201	201	186	2,530
Victoria	225	228	241	5,643
Randenigala	114	120	123	2,921
Rantambe	50	50	36	1,219
Ukuwela	37	40	36	860
Bowatenna	40	40	37	728
Upper Kotmale	150	150	153	2,758
Nilambe	3	3	0	77
Samanalawewa	120	120	124	2,864
Kukule	75	75	78	724
Inginiyagala	11	7	4	0
Udawalawe	6	3	0	78
Puttalam Coal I	270	270	271	4,828
Puttalam Coal II	270	0	0	0
Puttalam Coal III	270	270	0	0
KPS Small GTs	64	16	0	0
KPS GT 7	115	115	0	0
KCCP	161	0	0	0
Sapugaskanda A	70	49	0	0
Sapugaskanda B	70	54	0	0
Uthura Janani	26	16	16	50
Barge CEB	60	60	59	330
CEB-Hambantota	30	20	18	10
CEB-Mathugama	20	12	12	6
ACE Matara	24	24	24	70
Asia Power	50	0	0	0
KCCPS -2	163	0	0	0
West Coast	270	270	0	0
Nothern Power	36	0	0	0
ACE Embilipitiya	93	93	52	145
Total	3,483	2,693	2,005	36,275

Plant availability is the availability recorded at 6 am on

December 3, 2023

10. Contribution to the Night Peak in MW

December 2, 2023

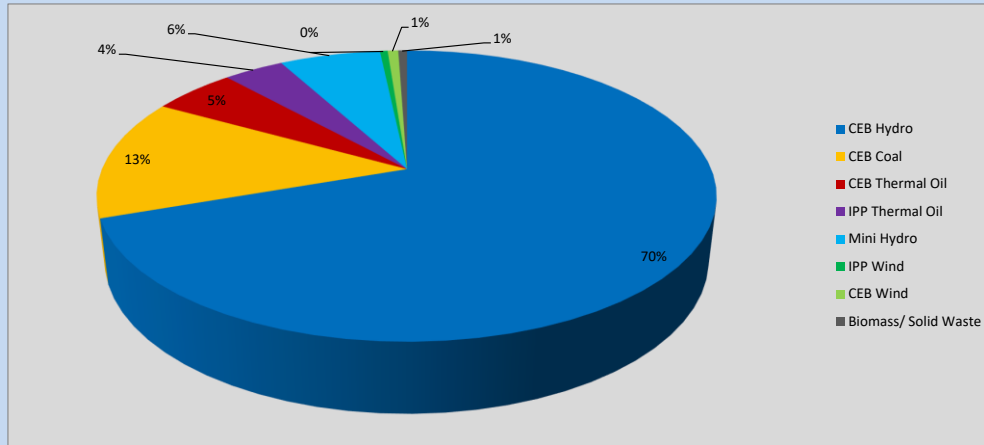


Table 06

CEB Hydro	1408	MW
CEB Coal	271	MW
CEB Thermal Oil	105	MW
IPP Thermal Oil	76	MW
Mini Hydro (Telemetered)	127	MW
IPP Wind	9.7	MW
CEB Wind	13.4	MW
Biomass/ Solid Waste	11	MW

Recorded Peak Demand Data

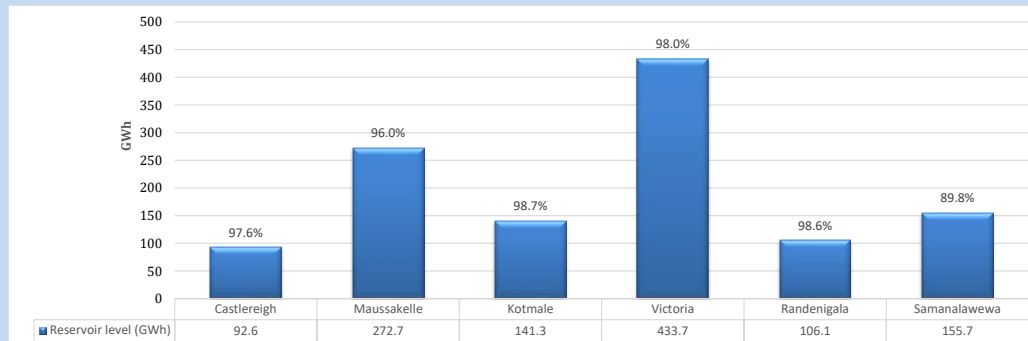
Table 07

Night Peak*	2,021	MW
Day Peak Maximum Demand	1,612	MW
Day Peak Minimum Demand	1,488	MW
Off Peak Minimum Demand	1,132	MW

Above figures are excluding contribution from roof top solar, non telemetered solar and mini hydro plants

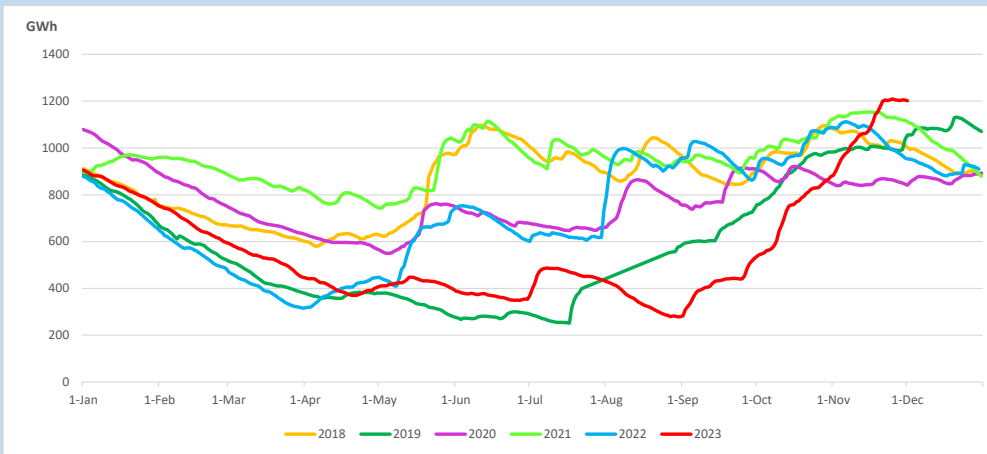
Reservoir Levels -

as at 06.00 Hr on December 3, 2023

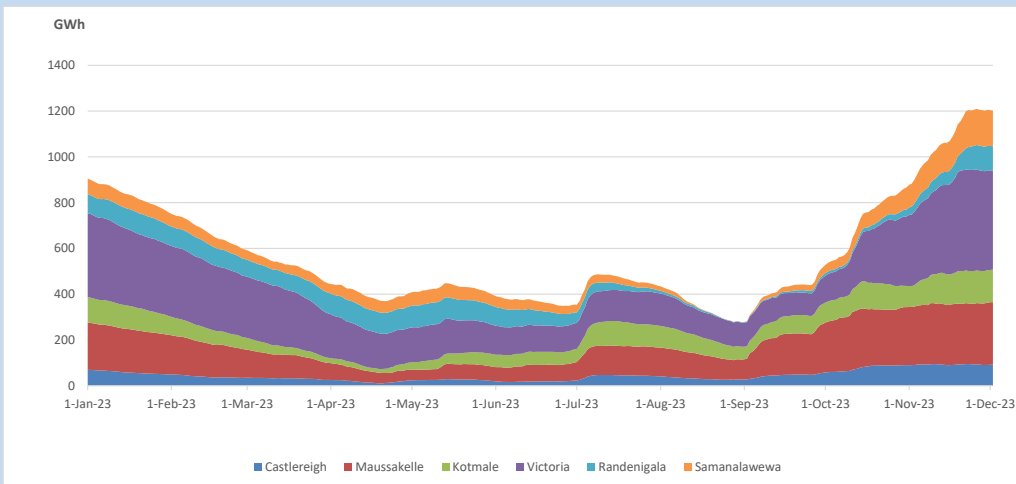


Total Reservoir Level 1202.1 GWh
% of Total capacity 96.5%

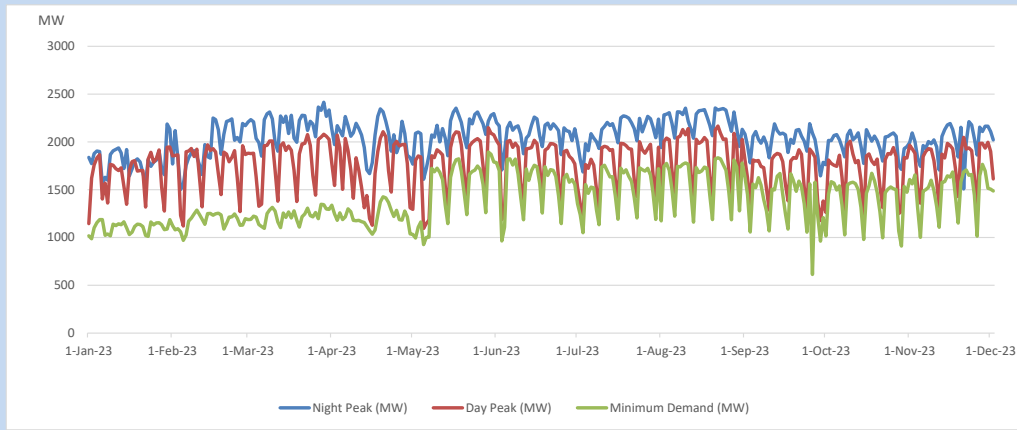
11. Comparison of Total Reservoir Storage Levels with Past Years



12. Variation of Major Hydro Reservoir Levels in the current year (GWh)



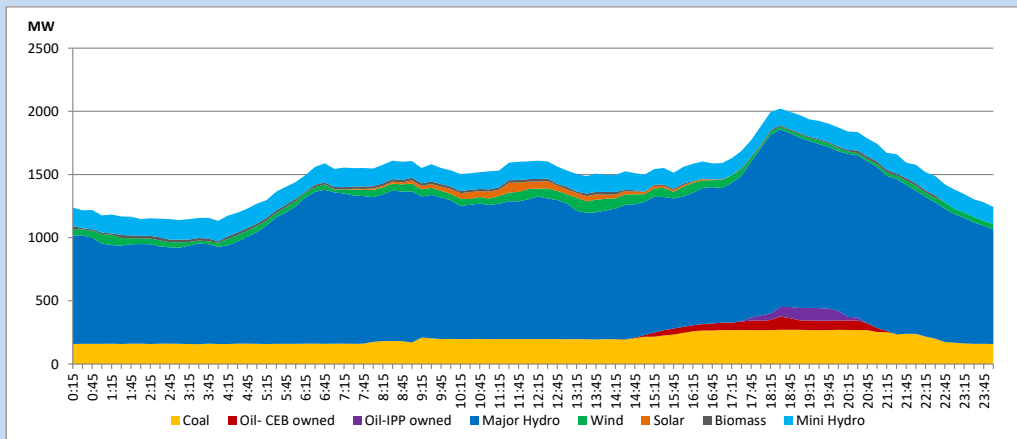
13. Variation of Demand during the current year



The above figures are excluding contribution from roof top solar, non telemetered solar and mini hydro plants

14. Daily Load Curve

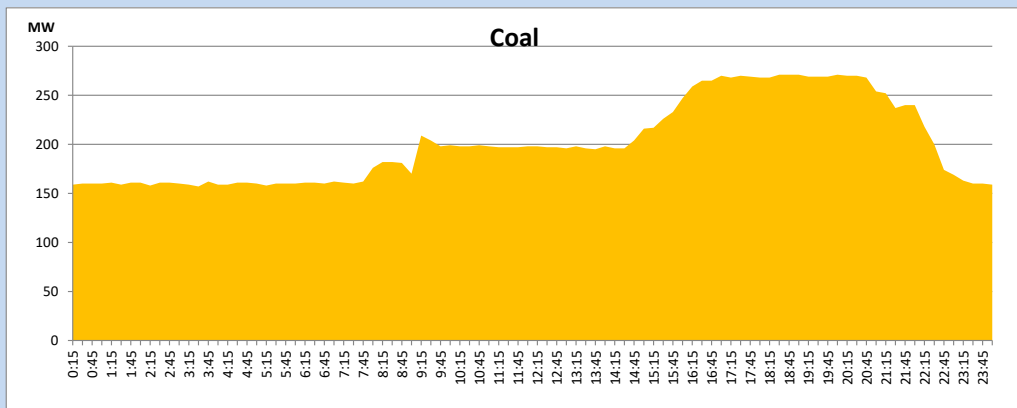
December 2, 2023



Solar and wind data is based on Telemetered Power Stations only

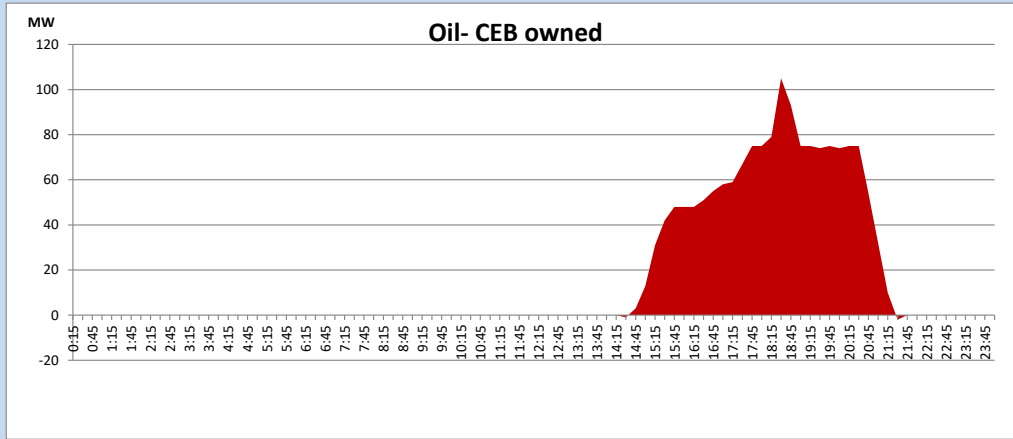
Coal Generation during

December 2, 2023



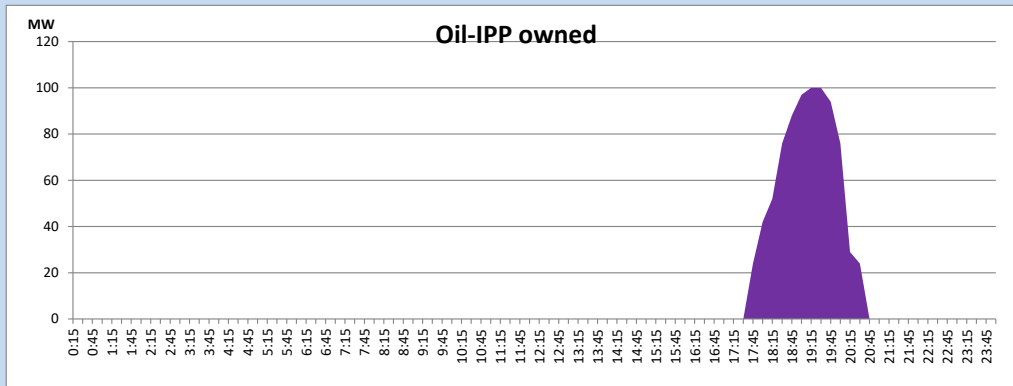
CEB Oil Plant Generation during

December 2, 2023



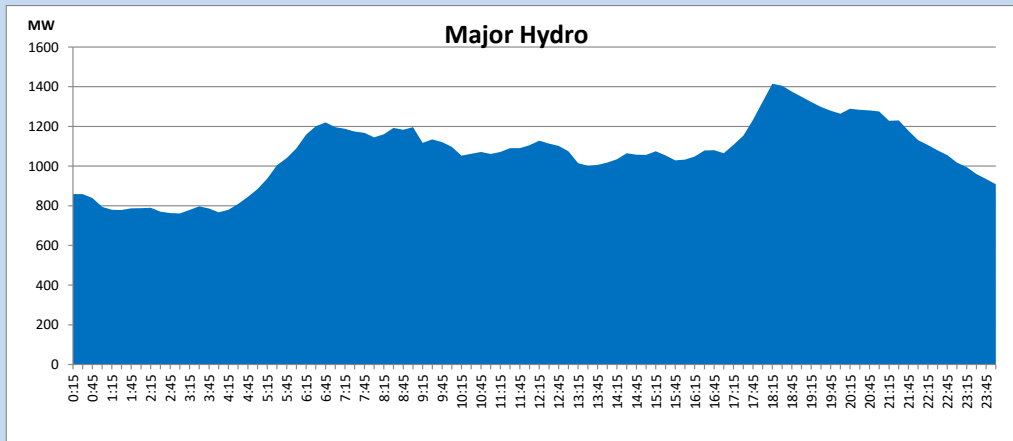
IPP Oil Plant Generation during

December 2, 2023



Major Hydro Generation during

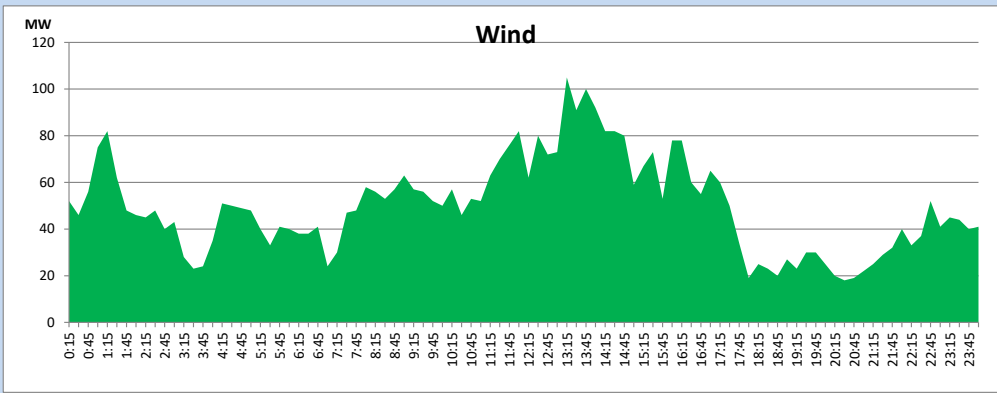
December 2, 2023



Wind Generation during

December 2, 2023

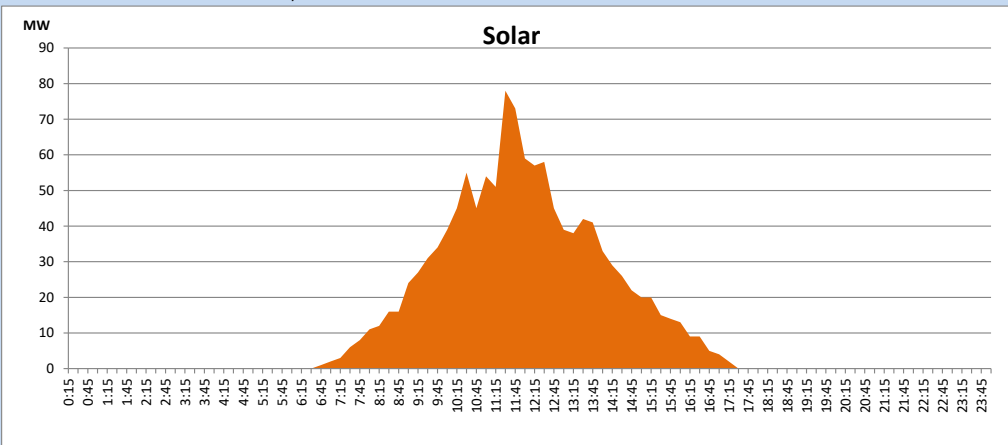
Based on Telemetered Power Stations only



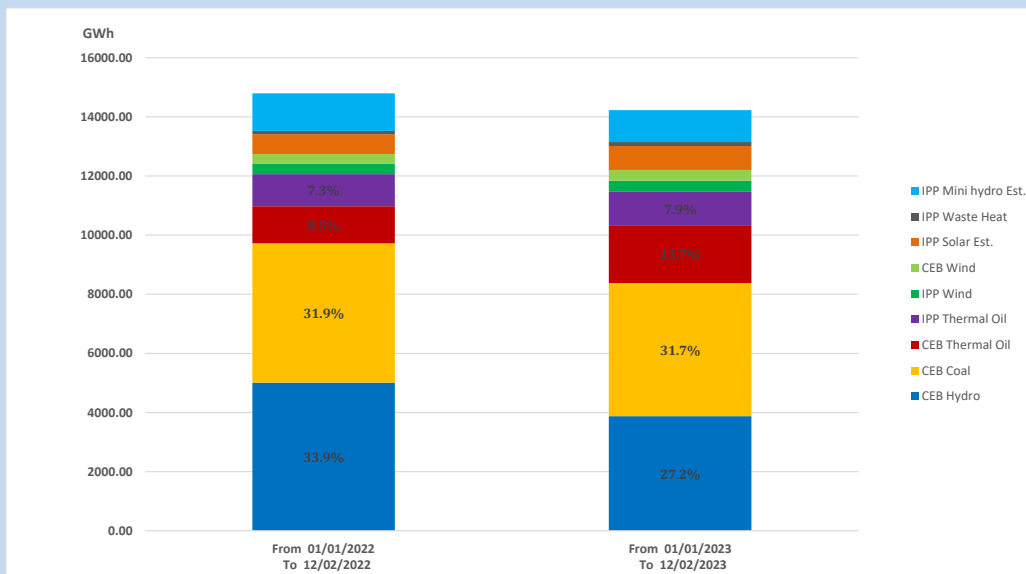
Solar Generation during

December 2, 2023

Based on Telemetered Power Stations only



15. Cumulative Dispatch Comparison with Last Year



Cumulative dispatch

From 01/01/2022 To 12/02/2022

14795 GWh

From 01/01/2023 To 12/02/2023

14232 GWh

The above figures are including contribution from roof top solar, non telemetered solar and mini hydro plants (figures have been adjusted based on the data from the CEB monthly review reports.)

Thermal Plant Fuel types

Table 08

Power Station	Primary Fuel
CEB Thermal	
Sapugaskanda 1	Heavy Fuel
Sapugaskanda 2	Heavy Fuel
Kelanitissa Small Gas Turbines	Auto Diesel
GT 7 - Kelanitissa	Auto Diesel
Kelanitissa CCY	Naphtha or Diesel
Lakvijaya 1	Coal
Lakvijaya 2	Coal
Lakvijaya 3	Coal
Uthuru Janani	Heavy Fuel
Barge CEB	Heavy Fuel
KCCPS -2	Auto Diesel

Power Station	Primary Fuel
Private Thermal	
West Coast	Auto Diesel / Heavy Fuel
ACE Matara	Heavy Fuel
ACE Embilipitiya	Heavy Fuel

Major Incidents reported during the day

December 2, 2023

- 1) New Polpitiya 220/132/33kV T/F 02 which tripped on 30.11.2023, was normalized at 11:29hrs.