

Generation and Reservoirs Statistics

December 1, 2023



PUBLIC UTILITIES COMMISSION OF SRI LANKA

1. Daily Generation Mix in MWh

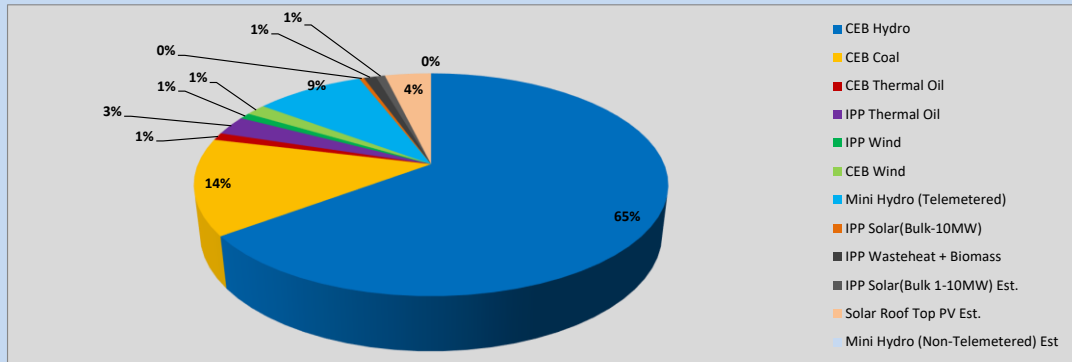


Table 01

	Generation (MWh)
CEB Hydro	26,497
CEB Coal	5,715
CEB Thermal Oil	439
IPP Thermal Oil	1,140
IPP Wind	363
CEB Wind	669
Mini Hydro (Telemetered)	3,638
IPP Solar (Bulk)	156
IPP Waste heat + Biomass	409
Total Generation (Excluding estimated figures)	39,026
* Estimated unserved energy	0
* Estimated Mini Hydro (Non telemetered)	-
* Estimated IPP Solar PV (Bulk 1-10MW)	304
* Estimated Solar Roof Top PV	1540
Total Generation (Including estimated figures)	40,870

* Estimated figures of CEB generation report

Table 02

	Installed Capacity (MW)
CEB Hydro	1409
CEB Coal	810
CEB Thermal Oil	781
IPP Thermal Oil (West Coast, ACE Matara and ACE Embilipitiya)	387
IPP Wind	148
CEB Wind	100
Mini Hydro	422
IPP Waste heat + Biomass	50
IPP Solar	136
Rooftop Solar (Ordinary)	277
Rooftop Solar (LT Bulk)	263
Rooftop Solar (HT Bulk)	70

Data Source - Monthly Review Report [Aug-2023]

2. Cumulative Dispatch

Following data excludes the contribution from roof top solar, non telemetered solar and mini hydro plants

Table 03 - Current Month

Category	Dispatch (GWh)	
CEB Hydro	27	64.82%
CEB Coal	6	13.99%
CEB Thermal Oil	0	1.08%
IPP Thermal	1	2.79%
SPP Wind	0	0.88%
CEB Wind	1	1.64%
Mini Hydro *	4	8.90%
IPP Solar *	2	4.89%
IPP Waste heat + BMP	0	1.00%
Total	41	

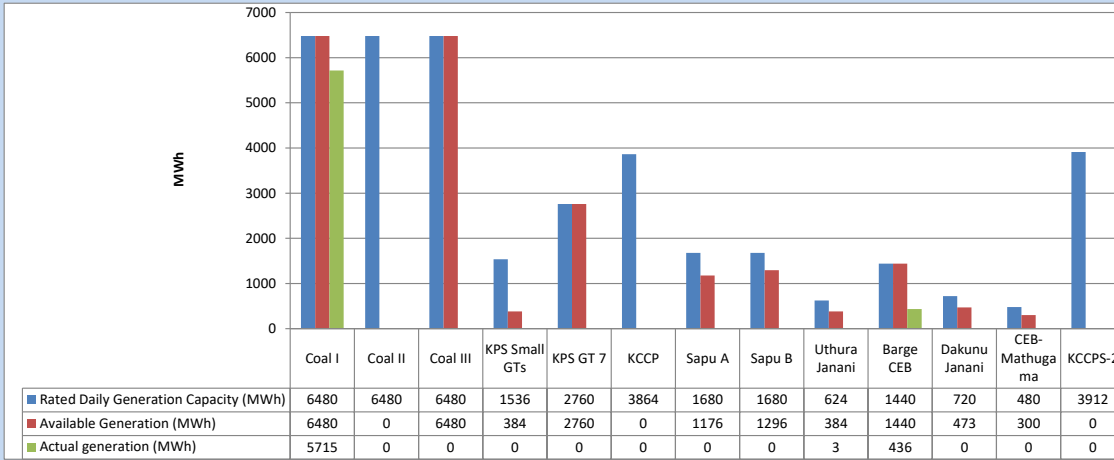
Table 04 - Current Year

Category	Dispatch (GWh)	
CEB Hydro	3,850	27.13%
CEB Coal	4,501	31.71%
CEB Thermal Oil	1,956	13.78%
IPP Thermal	1,128	7.95%
SPP Wind	373	2.63%
CEB Wind	363	2.56%
Mini Hydro *	1,076	7.58%
IPP Solar *	805	5.67%
IPP Waste heat	140	0.99%
Total	14,194	

*Including estimated contribution from non telemetered plants

3. CEB owned Thermal Plant Dispatch

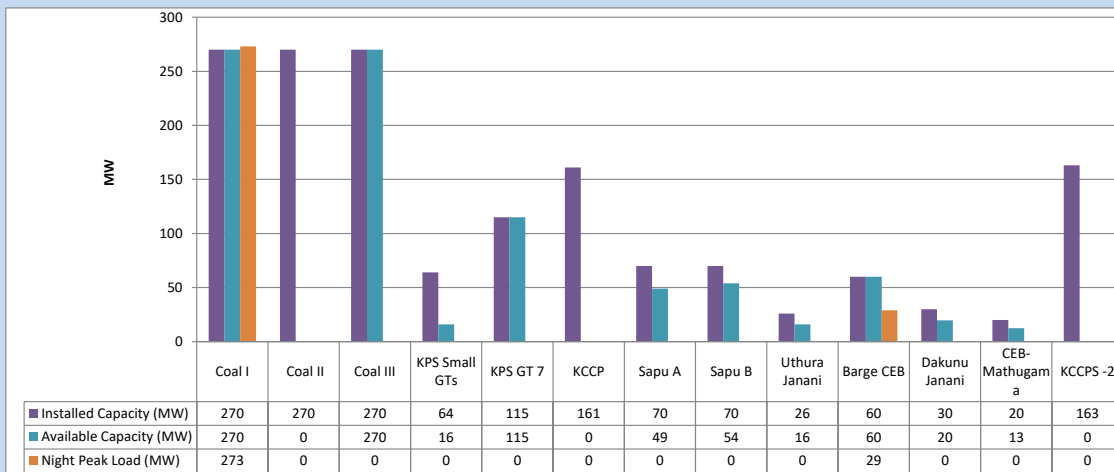
December 1, 2023



Available Generation is estimated based on plant availability at 6.00am on

December 2, 2023

4. CEB owned Thermal Plant Loading at the Night Peak

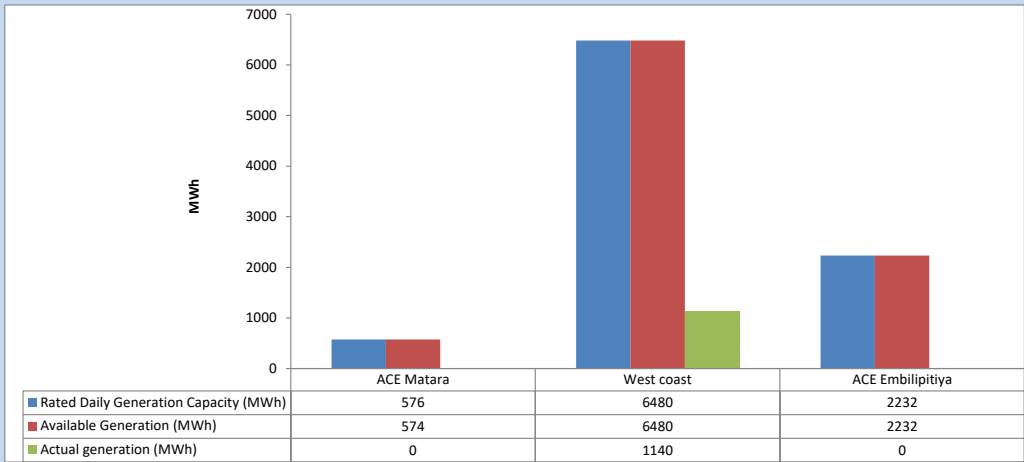


Plant availability is recorded at 6.00 am on

December 2, 2023

5. IPP owned Thermal Plant Dispatch

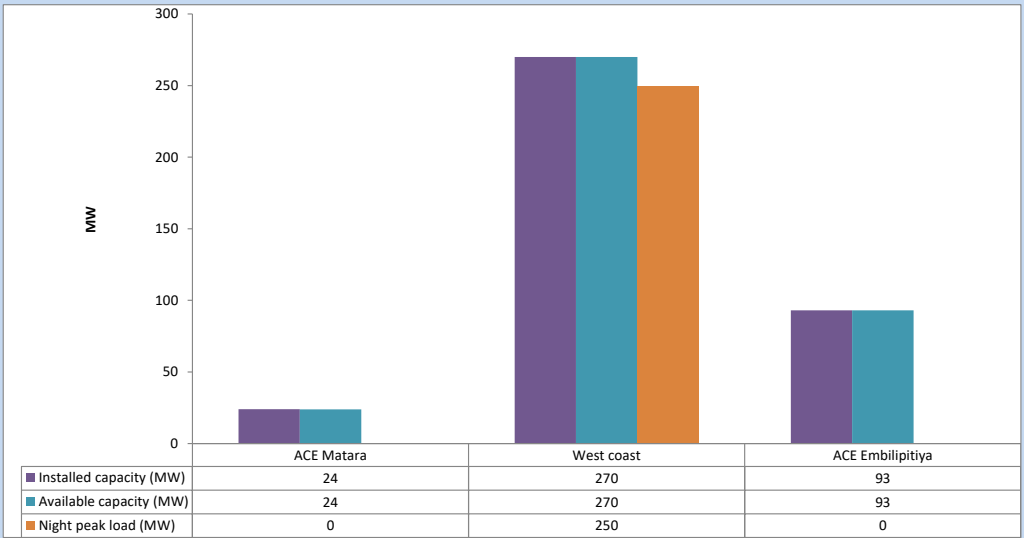
December 1, 2023



Available Generation is estimated based on plant availability at 6.00am on

December 2, 2023

6. IPP owned Thermal Plant Loading at the Night Peak

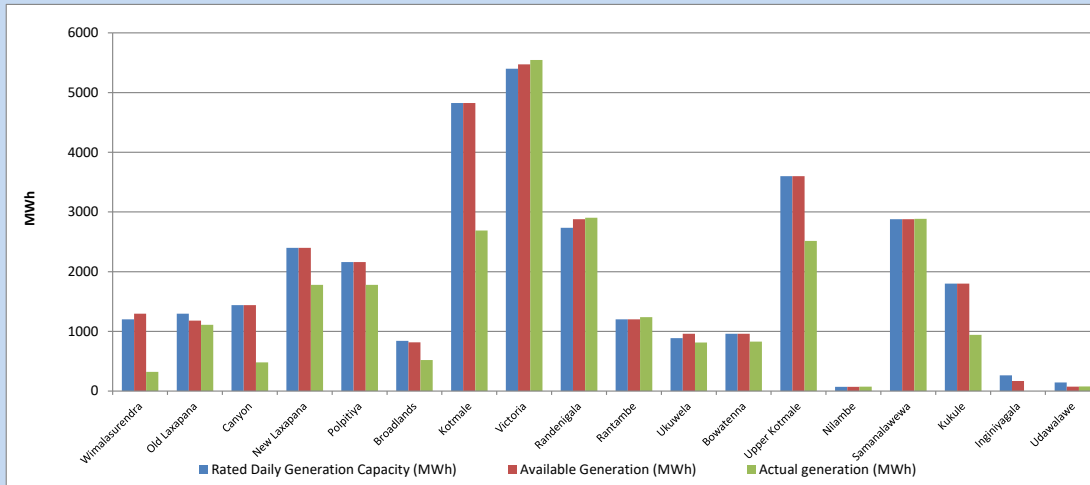


Plant availability is recorded at 6.00 am on

December 2, 2023

7. Major Hydro Plant Dispatch

December 1, 2023

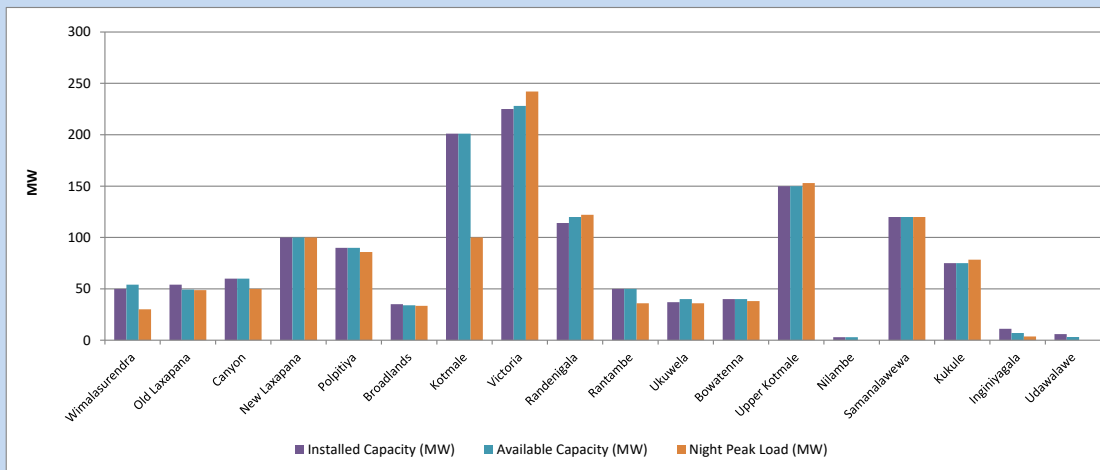


Available Generation is estimated based on plant availability at 6.00am on December 2, 2023
Broadlands power plant is operating in the Commissioning Stage

December 2, 2023

8. Major Hydro Plant Loading at Night Peak

December 1, 2023



Plant availability is recorded at 6.00 am on December 2, 2023
Broadlands power plant is operating in the Commissioning Stage

December 2, 2023

9. Summary of Major Plant performance

Table 05

Plant	Installed Capacity	Plant Availability	Night peak Load	Plant Dispatch
	(MW)	(MW)	(MW)	(MWh)
Wimalasurendra	50	54	30	320
Old Laxapana Canyon	54	49	49	1,110
New Laxapana	60	60	50	479
Polpitiya	100	100	100	1,778
Polpitiya	90	90	86	1,780
Broadlands	35	34	34	520
Kotmale	201	201	100	2,690
Victoria	225	228	242	5,546
Randenigala	114	120	122	2,902
Rantambe	50	50	36	1,237
Ukuwela	37	40	36	812
Bowatenna	40	40	38	827
Upper Kotmale	150	150	153	2,516
Nilambe	3	3	0	75
Samanalawewa	120	120	120	2,885
Kukule	75	75	78	943
Inginiyagala	11	7	4	0
Udawalawe	6	3	0	77
Puttalam Coal I	270	270	273	5,715
Puttalam Coal II	270	0	0	0
Puttalam Coal III	270	270	0	0
KPS Small GTs	64	16	0	0
KPS GT 7	115	115	0	0
KCCP	161	0	0	0
Sapugaskanda A	70	49	0	0
Sapugaskanda B	70	54	0	0
Uthura Janani	26	16	0	3
Barge CEB	60	60	29	436
CEB-Hambantota	30	20	0	0
CEB-Mathugama	20	13	0	0
ACE Matara	24	24	0	0
Asia Power	50	0	0	0
KCCPS -2	163	0	0	0
West Coast	270	270	250	1,140
Nothern Power	36	0	0	0
ACE Embilipitiya	93	93	0	0
Total	3,483	2,693	2,094	#VALUE!

Plant availability is the availability recorded at 6 am on

December 2, 2023

10. Contribution to the Night Peak in MW

December 1, 2023

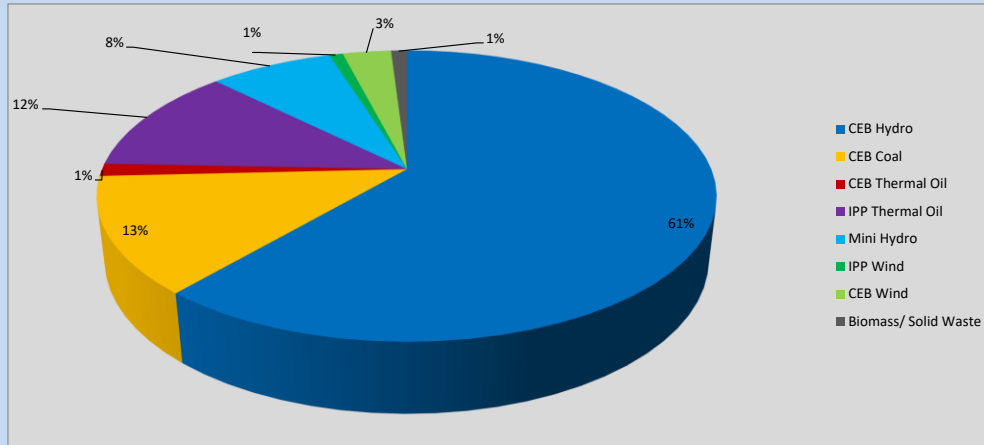


Table 06

CEB Hydro	1293	MW
CEB Coal	273	MW
CEB Thermal Oil	29	MW
IPP Thermal Oil	250	MW
Mini Hydro (Telemetered)	162	MW
IPP Wind	17.9	MW
CEB Wind	63.6	MW
Biomass/ Solid Waste	21	MW

Recorded Peak Demand Data

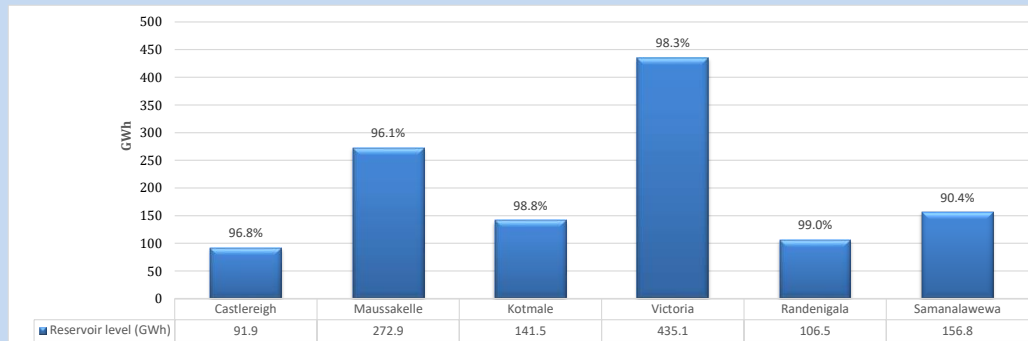
Table 07

Night Peak*	2,110	MW
Day Peak Maximum Demand	1,901	MW
Day Peak Minimum Demand	1,506	MW
Off Peak Minimum Demand	1,144	MW

Above figures are excluding contribution from roof top solar, non telemetered solar and mini hydro plants

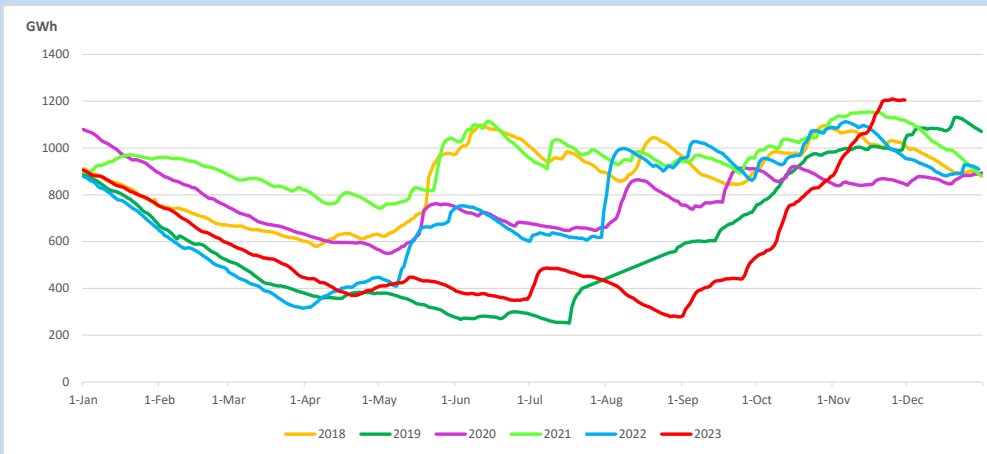
Reservoir Levels -

as at 06.00 Hr on December 2, 2023

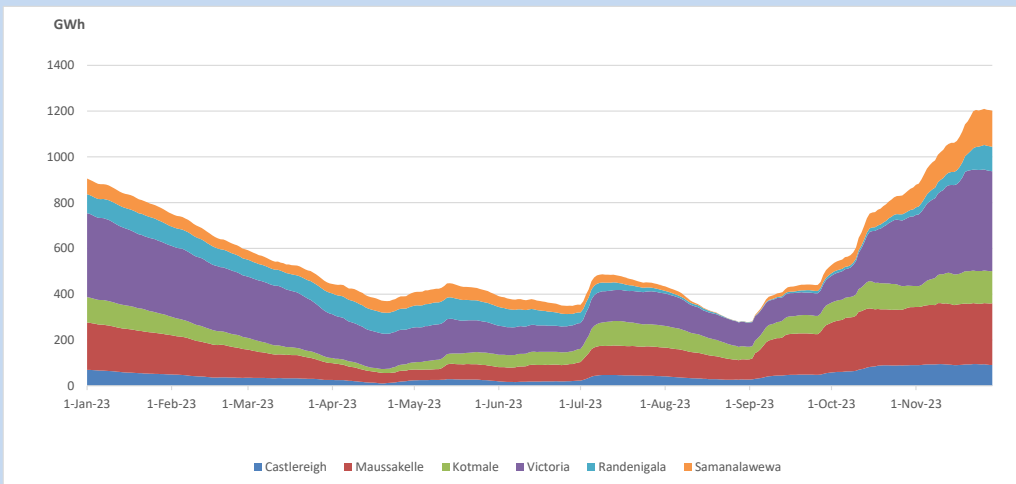


Total Reservoir Level 1204.7 GWh
 % of Total capacity 96.7%

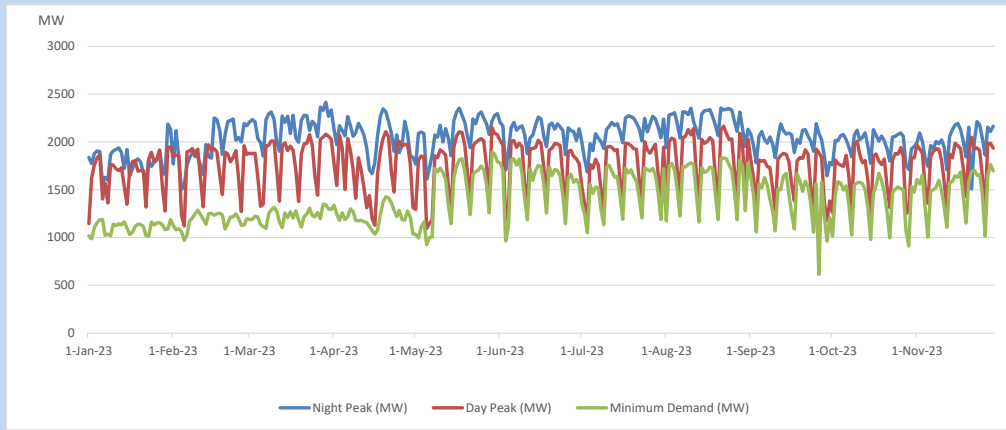
11. Comparison of Total Reservoir Storage Levels with Past Years



12. Variation of Major Hydro Reservoir Levels in the current year (GWh)



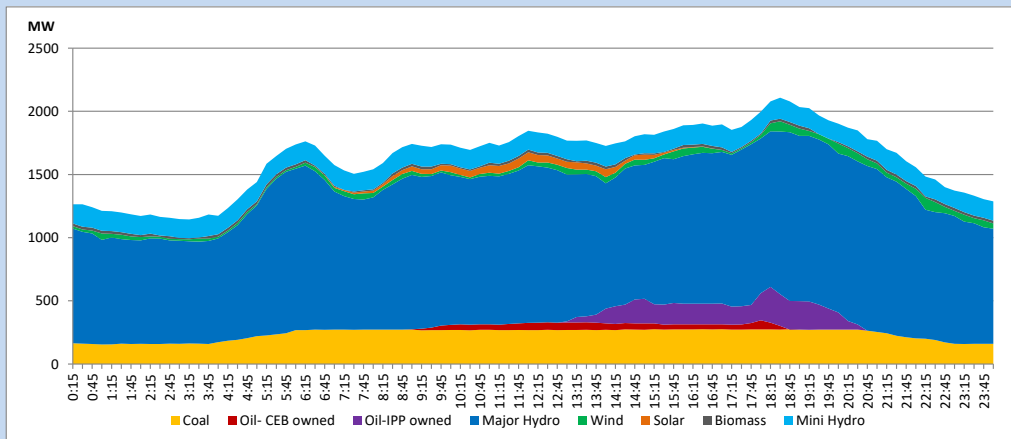
13. Variation of Demand during the current year



The above figures are excluding contribution from roof top solar, non telemetered solar and mini hydro plants

14. Daily Load Curve

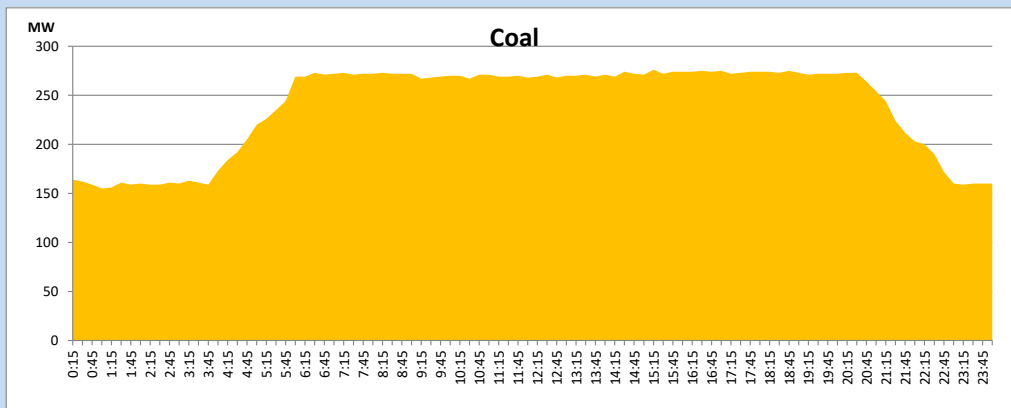
December 1, 2023



Solar and wind data is based on Telemetered Power Stations only

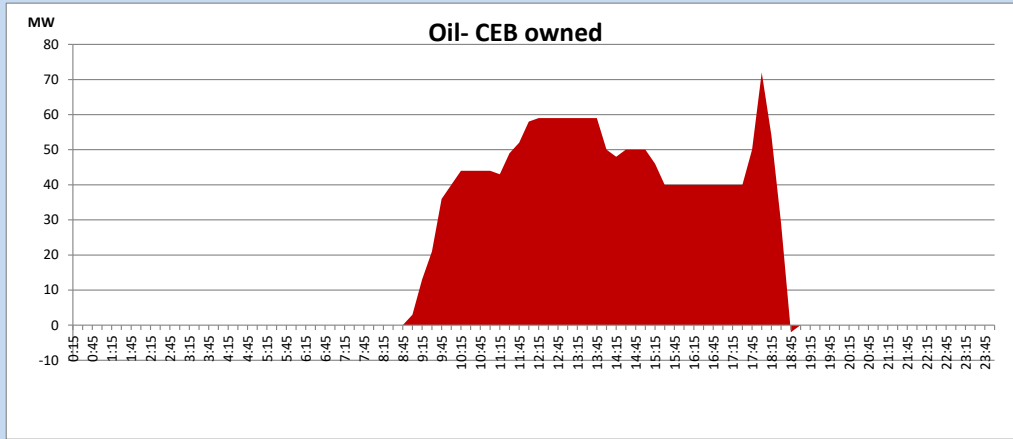
Coal Generation during

December 1, 2023



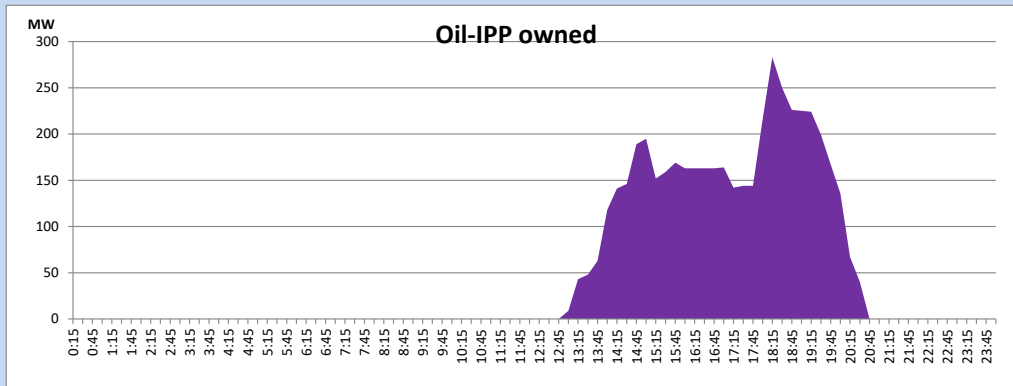
CEB Oil Plant Generation during

December 1, 2023



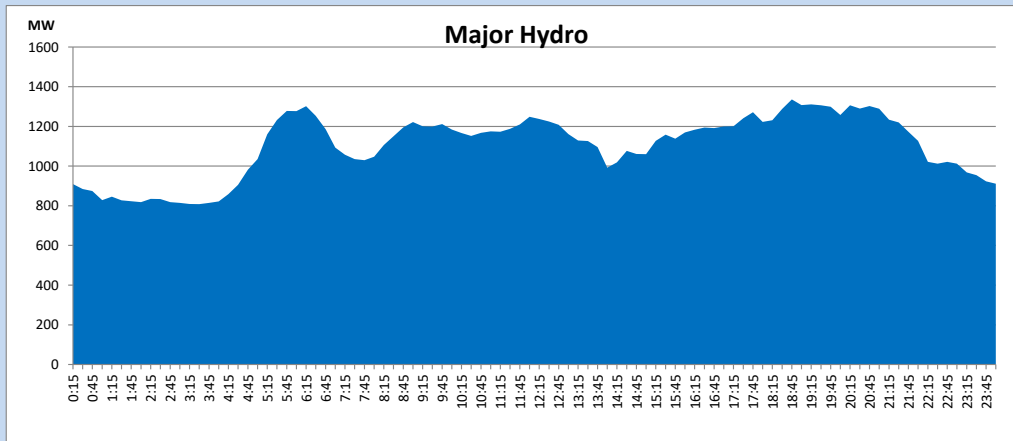
IPP Oil Plant Generation during

December 1, 2023



Major Hydro Generation during

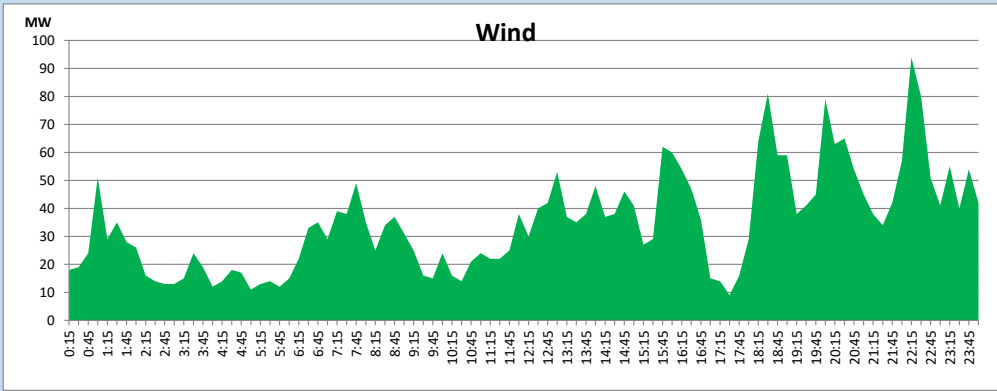
December 1, 2023



Wind Generation during

December 1, 2023

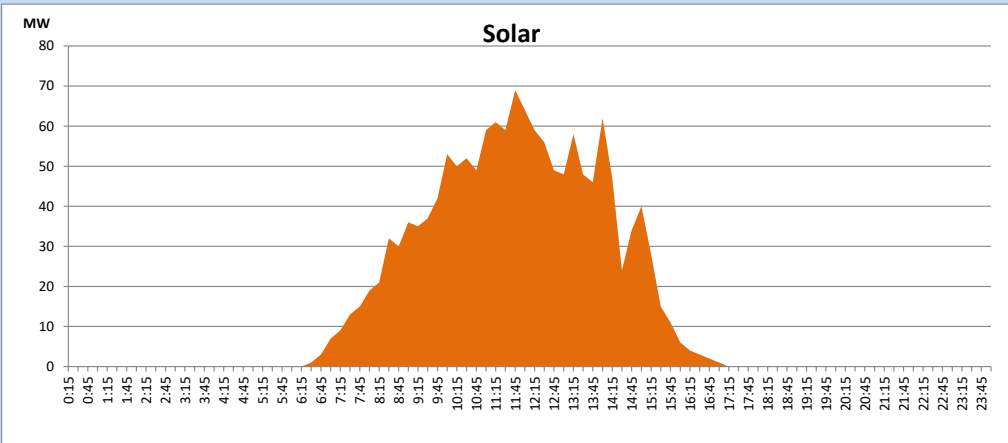
Based on Telemetered Power Stations only



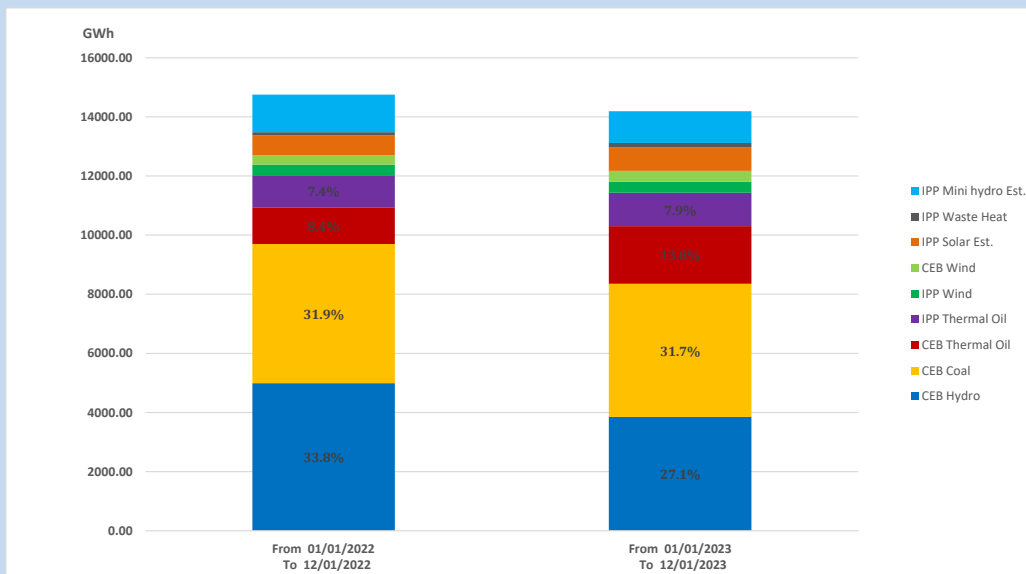
Solar Generation during

December 1, 2023

Based on Telemetered Power Stations only



15. Cumulative Dispatch Comparison with Last Year



Cumulative dispatch

From 01/01/2022 To 12/01/2022

14752 GWh

From 01/01/2023 To 12/01/2023

14194 GWh

The above figures are including contribution from roof top solar, non telemetered solar and mini hydro plants (figures have been adjusted based on the data from the CEB monthly review reports.)

Thermal Plant Fuel types

Table 08

Power Station	Primary Fuel
CEB Thermal	
Sapugaskanda 1	Heavy Fuel
Sapugaskanda 2	Heavy Fuel
Kelanitissa Small Gas Turbines	Auto Diesel
GT 7 - Kelanitissa	Auto Diesel
Kelanitissa CCY	Naphtha or Diesel
Lakvijaya 1	Coal
Lakvijaya 2	Coal
Lakvijaya 3	Coal
Uthuru Janani	Heavy Fuel
Barge CEB	Heavy Fuel
KCCPS -2	Auto Diesel

Power Station	Primary Fuel
Private Thermal	
West Coast	Auto Diesel / Heavy Fuel
ACE Matara	Heavy Fuel
ACE Embilipitiya	Heavy Fuel

Major Incidents reported during the day

December 1, 2023

- 1) New Polpitiya 220/132/33kV T/F 02 which tripped on 30.11.2023, was normalized at 11:29hrs.