

Generation and Reservoirs Statistics

October 30, 2023



PUBLIC UTILITIES COMMISSION OF SRI LANKA

1. Daily Generation Mix in MWh

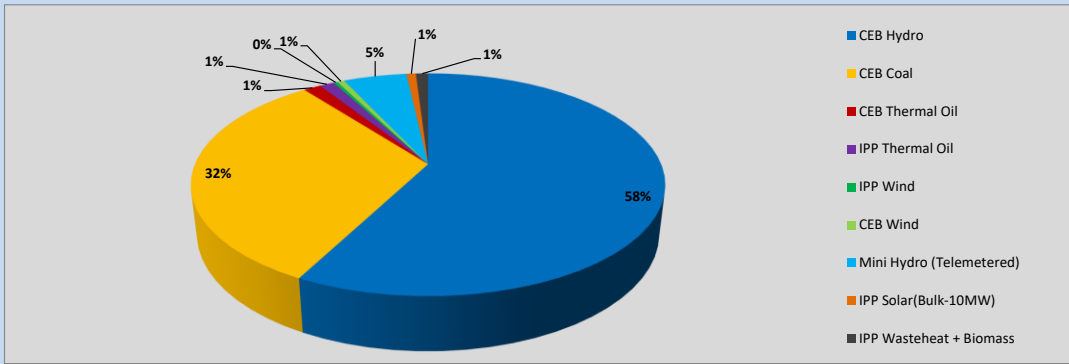


Table 01

	Generation (MWh)
CEB Hydro	20,502
CEB Coal	11,349
CEB Thermal Oil	502
IPP Thermal Oil	423
IPP Wind	116
CEB Wind	209
Mini Hydro (Telemetered)	1,835
IPP Solar (Bulk)	273
IPP Waste heat + Biomass	354
Total Generation (Excluding estimated figures)	35,563
* Estimated unserved energy	0
* Estimated Mini Hydro (Non telemetered)	3025
* Estimated IPP Solar PV (Bulk 1-10MW)	304
* Estimated Solar Roof Top PV	1930
Total Generation (Including estimated figures)	40,822

* Estimated figures of CEB generation report

Table 02

	Installed Capacity (MW)
CEB Hydro	1409
CEB Coal	810
CEB Thermal Oil	781
IPP Thermal Oil (West Coast, ACE Matara and ACE Embilipitiya)	387
IPP Wind	148
CEB Wind	100
Mini Hydro	416
IPP Waste heat + Biomass	50
IPP Solar	130
Rooftop Solar* (Ordinary)	267
Rooftop Solar* (LT Bulk)	256
Rooftop Solar* (HT Bulk)	61

Data Source - Monthly Review Report [May-2023]

2. Cumulative Dispatch

Following data excludes the contribution from roof top solar, non telemetered solar and mini hydro plants

Table 03 - Current Month

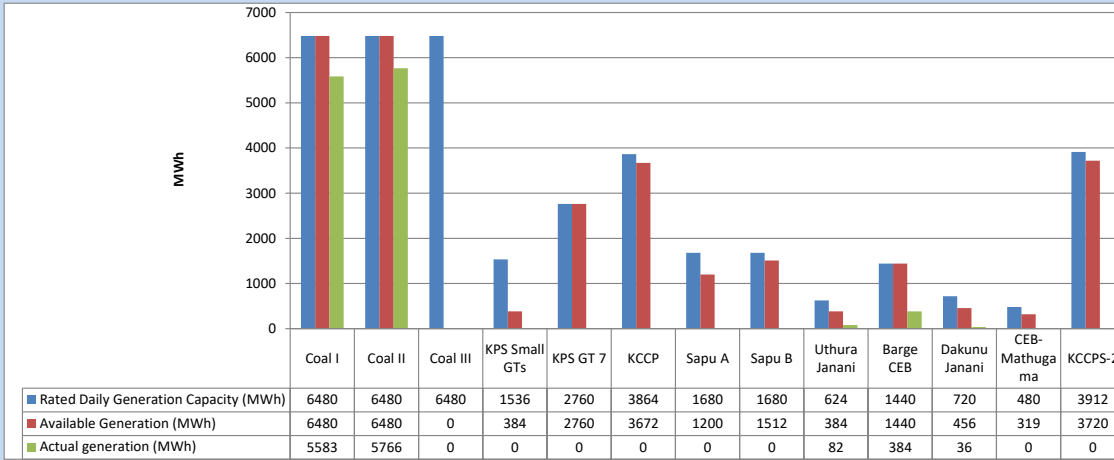
Category	Dispatch (GWh)	
CEB Hydro	526	49.13%
CEB Coal	346	32.26%
CEB Thermal Oil	60	5.59%
IPP Thermal	19	1.79%
SPP Wind	21	1.97%
CEB Wind	24	2.23%
Mini Hydro (Telemetered)	56	5.22%
IPP Solar(Bulk-10MW)	8	0.76%
IPP Waste heat + BMP	8	0.78%
Total	1,071	

Table 04 - Current Year

Category	Dispatch (GWh)	
CEB Hydro	3,092	26.57%
CEB Coal	4,265	36.66%
CEB Thermal Oil	1,954	16.79%
IPP Thermal	1,114	9.57%
SPP Wind	346	2.98%
CEB Wind	356	3.06%
Mini Hydro (Telemetered)	308	2.64%
IPP Solar(Bulk-10MW)	91	0.78%
IPP Waste heat	108	0.93%
Total	11,635	

3. CEB owned Thermal Plant Dispatch

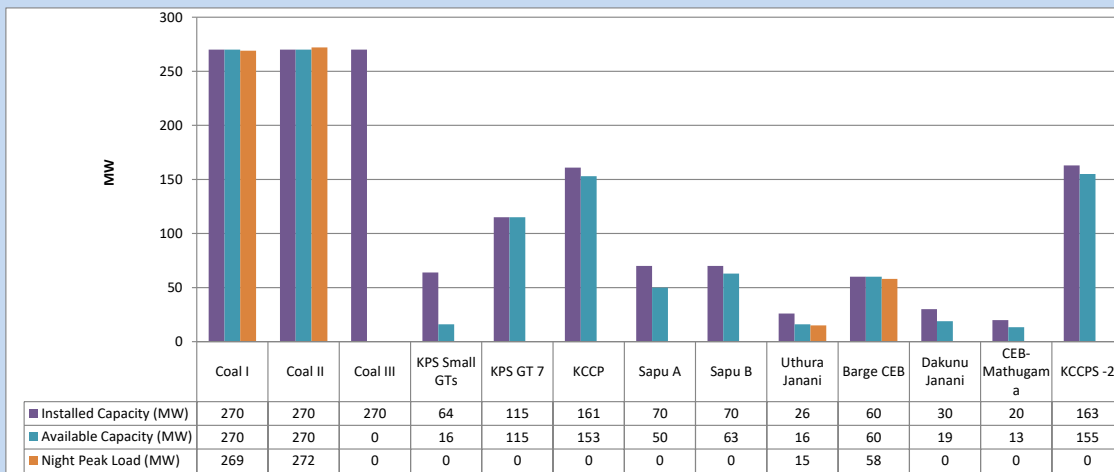
October 30, 2023



Available Generation is estimated based on plant availability at 6.00am on

October 31, 2023

4. CEB owned Thermal Plant Loading at the Night Peak

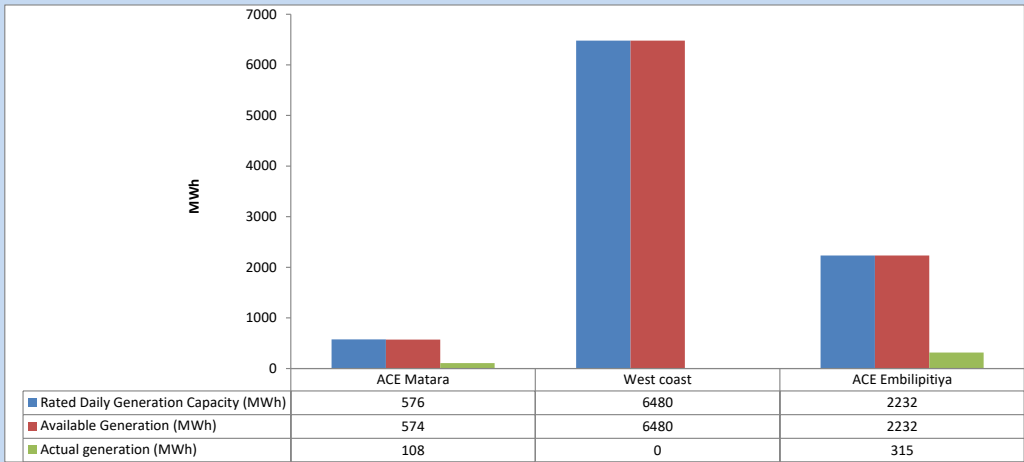


Plant availability is recorded at 6.00 am on

October 31, 2023

5. IPP owned Thermal Plant Dispatch

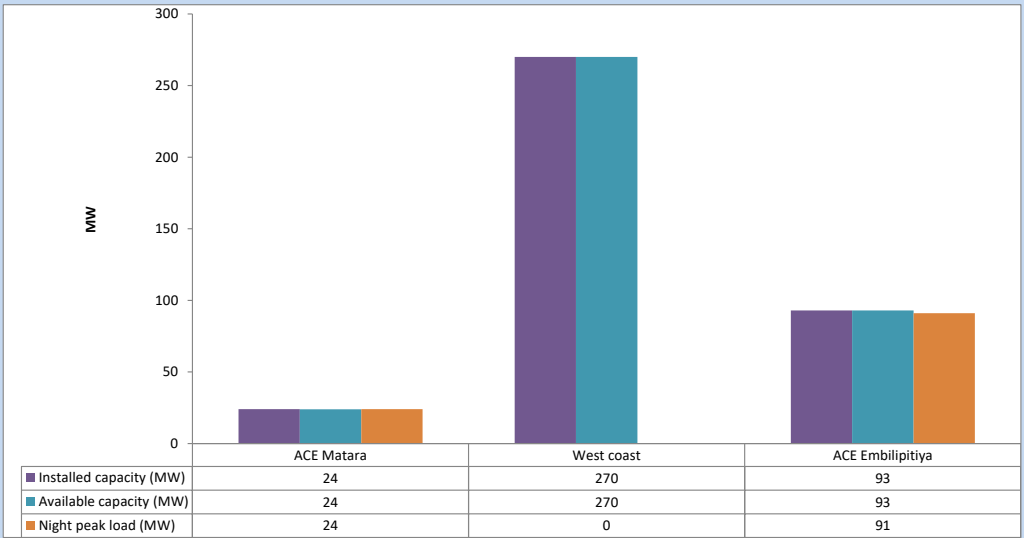
October 30, 2023



Available Generation is estimated based on plant availability at 6.00am on

October 31, 2023

6. IPP owned Thermal Plant Loading at the Night Peak

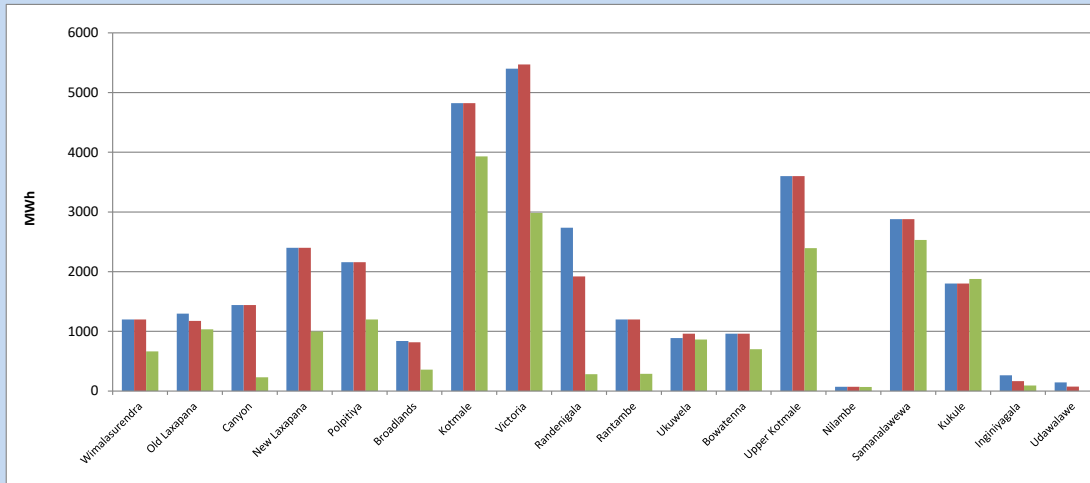


Plant availability is recorded at 6.00 am on

October 31, 2023

7. Major Hydro Plant Dispatch

October 30, 2023

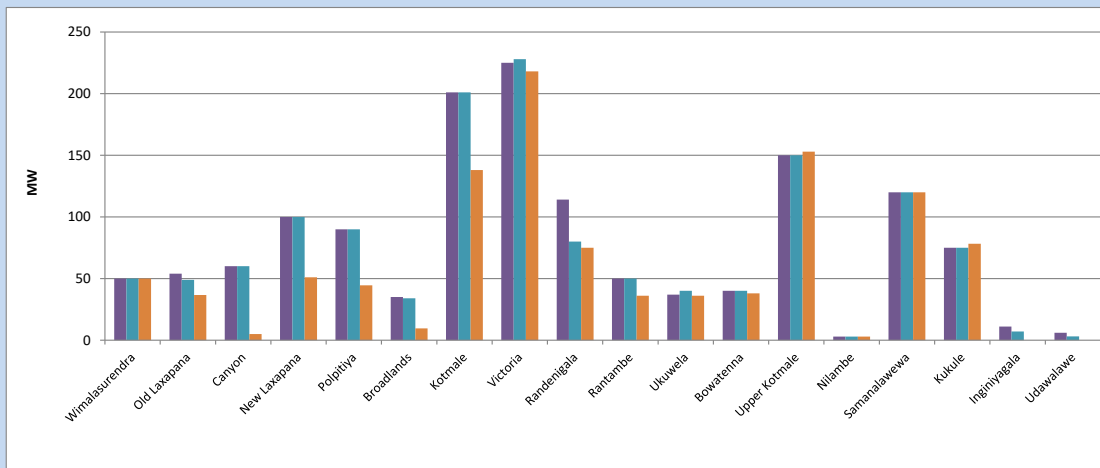


Available Generation is estimated based on plant availability at 6.00am on October 31, 2023
Broadlands power plant is operating in the Commissioning Stage

October 31, 2023

8. Major Hydro Plant Loading at Night Peak

October 30, 2023



Plant availability is recorded at 6.00 am on October 31, 2023
Broadlands power plant is operating in the Commissioning Stage

October 31, 2023

9. Summary of Major Plant performance

Table 05

Plant	Installed Capacity	Plant Availability	Night peak Load	Plant Dispatch
	(MW)	(MW)	(MW)	(MWh)
Wimalasurendra	50	50	50	666
Old Laxapana	54	49	37	1,035
Canyon	60	60	5	232
New Laxapana	100	100	51	997
Polpitiya	90	90	45	1,200
Broadlands	35	34	10	358
Kotmale	201	201	138	3,930
Victoria	225	228	218	2,982
Randenigala	114	80	75	283
Rantambe	50	50	36	290
Ukuwela	37	40	36	863
Bowatenna	40	40	38	701
Upper Kotmale	150	150	153	2,394
Nilambe	3	3	3	70
Samanalawewa	120	120	120	2,530
Kukule	75	75	78	1,877
Inginiyagala	11	7	0	94
Udawalawe	6	3	0	0
Puttalam Coal I	270	270	269	5,583
Puttalam Coal II	270	270	272	5,766
Puttalam Coal III	270	0	0	0
KPS Small GTs	64	16	0	0
KPS GT 7	115	115	0	0
KCCP	161	153	0	0
Sapugaskanda A	70	50	0	0
Sapugaskanda B	70	63	0	0
Uthura Janani	26	16	15	82
Barge CEB	60	60	58	384
CEB-Hambantota	30	19	0	36
CEB-Mathugama	20	13	0	0
ACE Matara	24	24	24	108
Asia Power	50	0	0	0
KCCPS -2	163	155	0	0
West Coast	270	270	0	0
Nothern Power	36	0	0	0
ACE Embilipitiya	93	93	91	315
Total	3,483	2,967	1,916	35,563

Plant availability is the availability recorded at 6 am on

October 31, 2023

10. Contribution to the Night Peak in MW

October 30, 2023

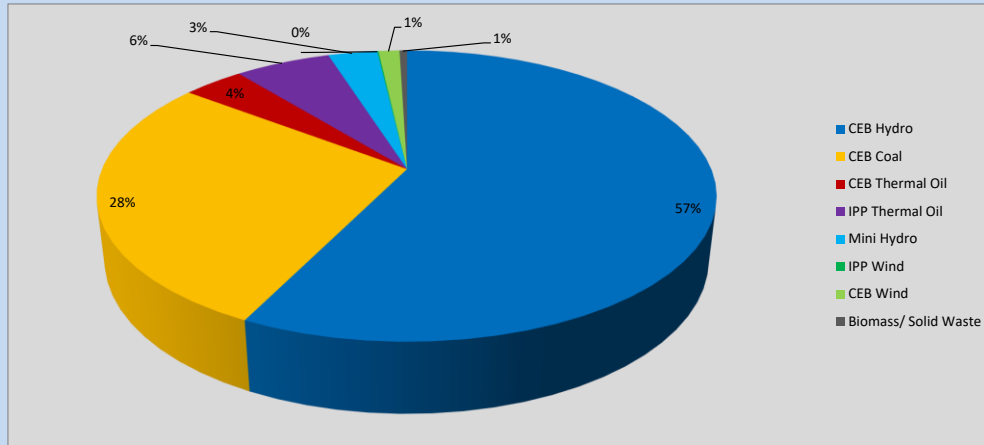


Table 06

CEB Hydro	1106	MW
CEB Coal	541	MW
CEB Thermal Oil	73	MW
IPP Thermal Oil	115	MW
Mini Hydro (Telemetered)	59	MW
IPP Wind	1.5	MW
CEB Wind	25.3	MW
Biomass/ Solid Waste	9	MW

Recorded Peak Demand Data

Table 07

Night Peak*	1,930	MW
Day Peak Maximum Demand	1,834	MW
Day Peak Minimum Demand	1,535	MW
Off Peak Minimum Demand	988	MW

Above figures are excluding contribution from roof top solar, non telemetered solar and mini hydro plants

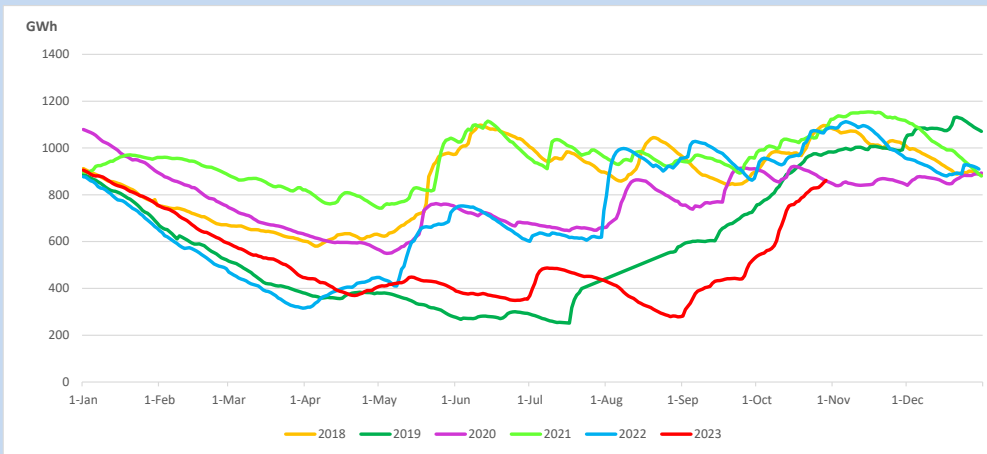
Reservoir Levels -

as at 06.00 Hr on October 31, 2023

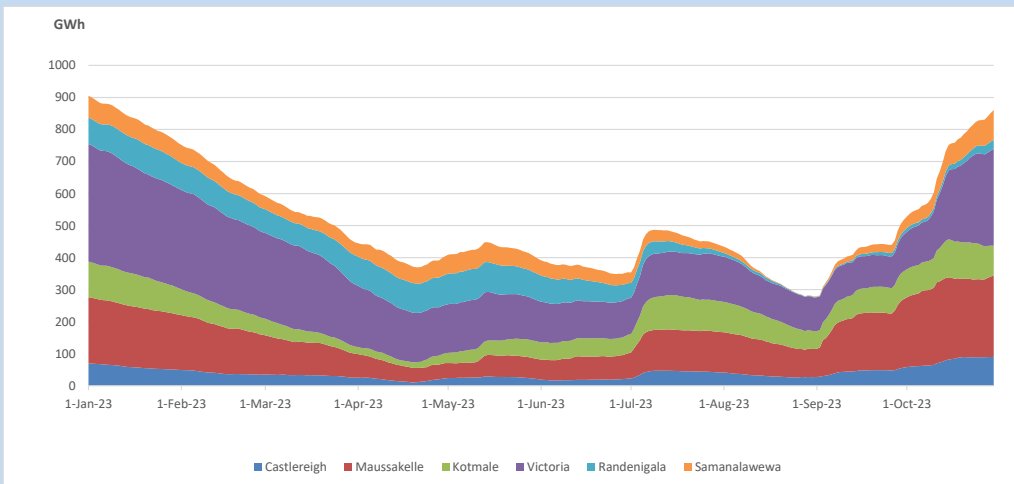


Total Reservoir Level **861.1 GWh**
 % of Total capacity **71.4%**

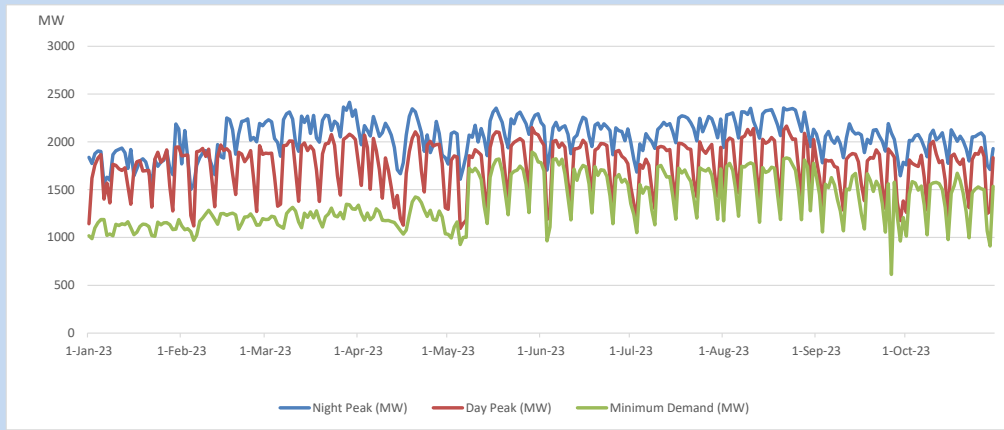
11. Comparison of Total Reservoir Storage Levels with Past Years



12. Variation of Major Hydro Reservoir Levels in the current year (GWh)



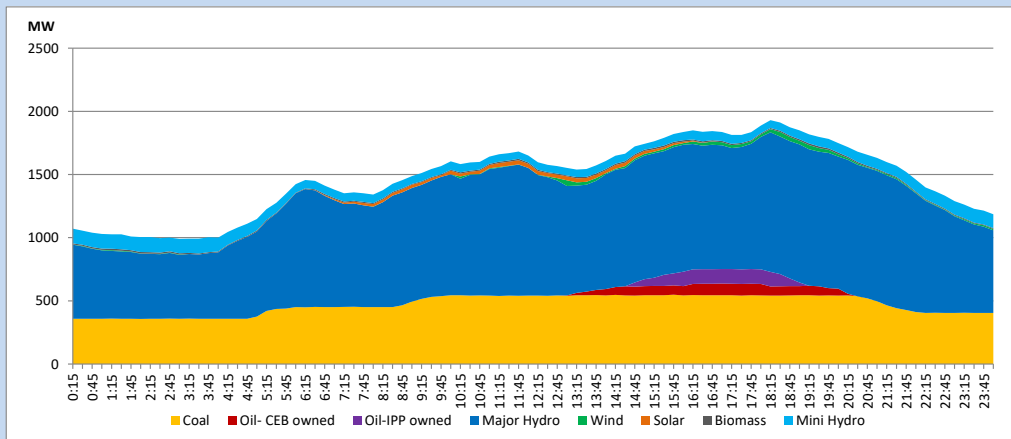
13. Variation of Demand during the current year



The above figures are excluding contribution from roof top solar, non telemetered solar and mini hydro plants

14. Daily Load Curve

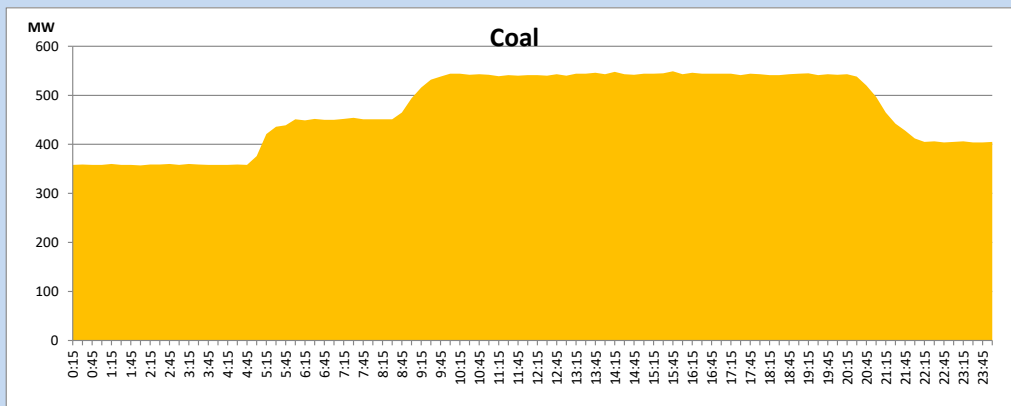
October 30, 2023



Solar and wind data is based on Telemetered Power Stations only

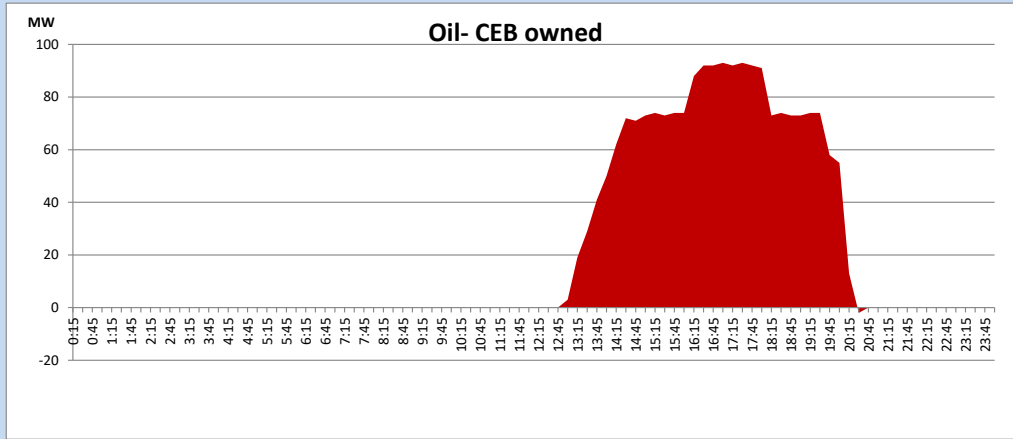
Coal Generation during

October 30, 2023



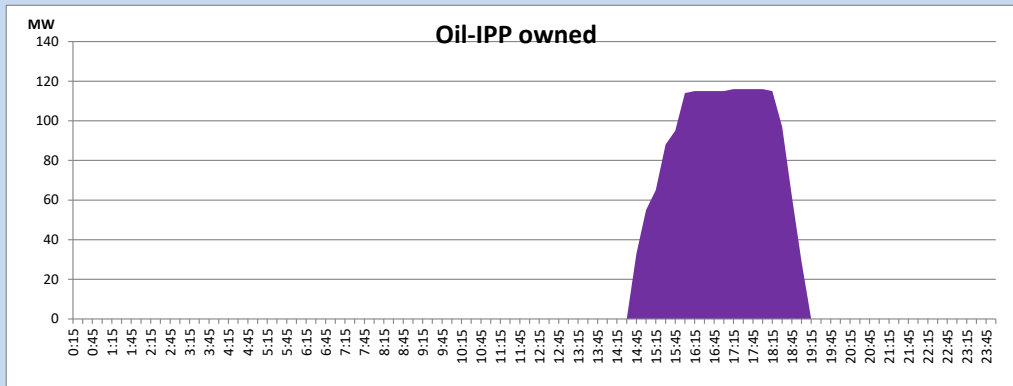
CEB Oil Plant Generation during

October 30, 2023



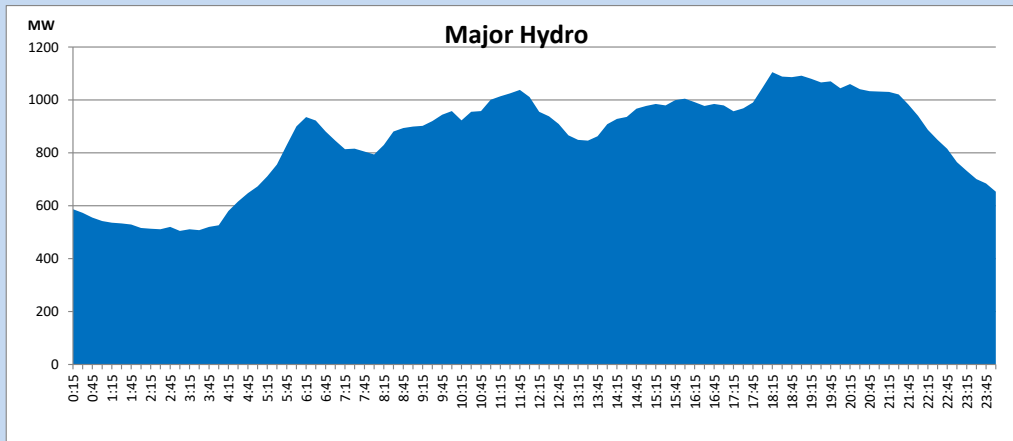
IPP Oil Plant Generation during

October 30, 2023



Major Hydro Generation during

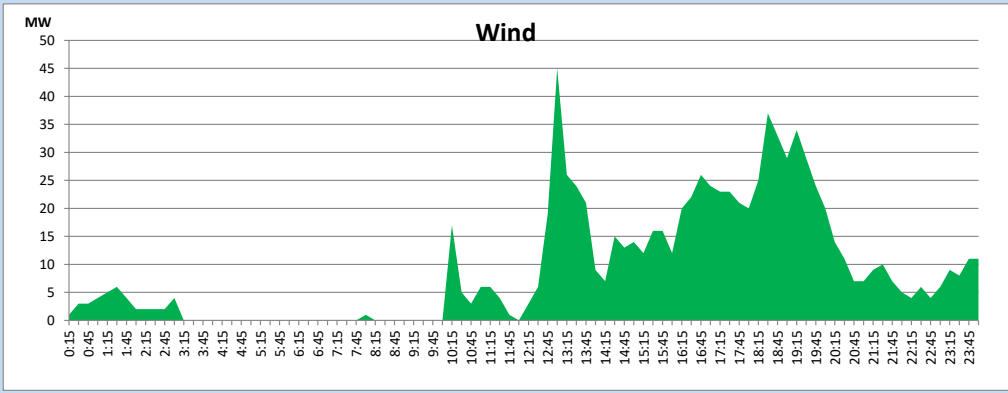
October 30, 2023



Wind Generation during

October 30, 2023

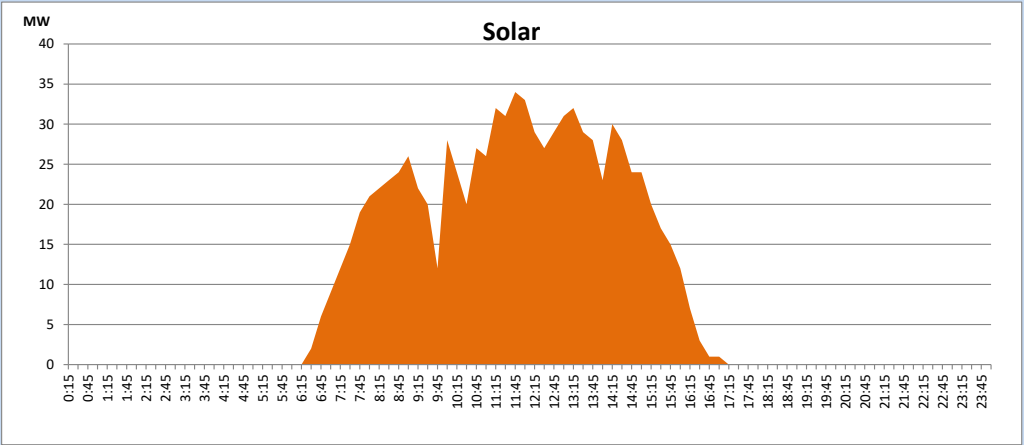
Based on Telemetered Power Stations only



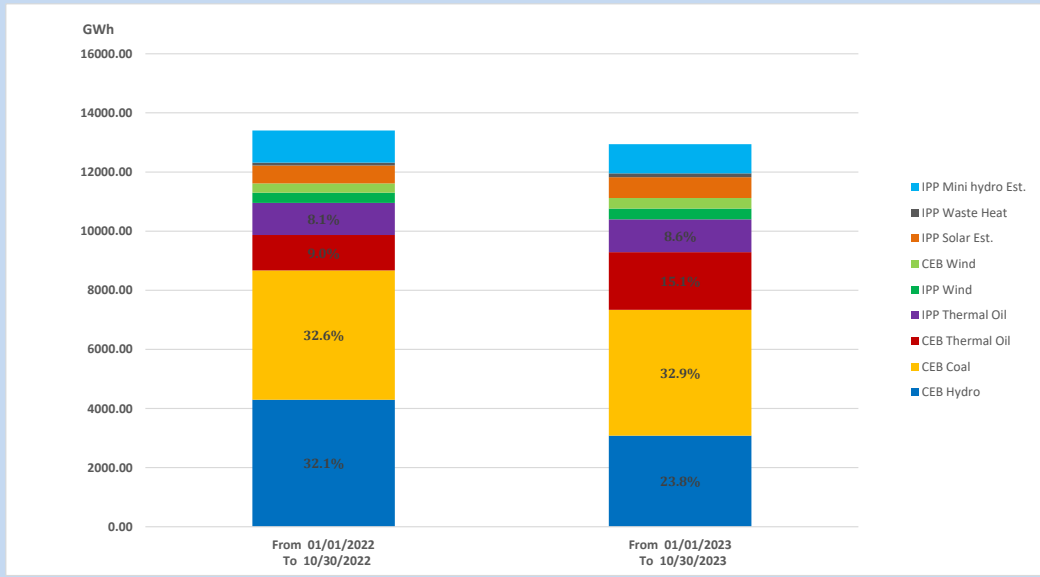
Solar Generation during

October 30, 2023

Based on Telemetered Power Stations only



15. Cumulative Dispatch Comparison with Last Year



Cumulative dispatch

From 01/01/2022 To 10/30/2022

13407 GWh

From 01/01/2023 To 10/30/2023

12941 GWh

The above figures are including contribution from roof top solar, non telemetered solar and mini hydro plants (figures have been adjusted based on the data from the CEB monthly review reports.)

Thermal Plant Fuel types

Table 08

Power Station	Primary Fuel
CEB Thermal	
Sapugaskanda 1	Heavy Fuel
Sapugaskanda 2	Heavy Fuel
Kelanitissa Small Gas Turbines	Auto Diesel
GT 7 - Kelanitissa	Auto Diesel
Kelanitissa CCY	Naphtha or Diesel
Lakvijaya 1	Coal
Lakvijaya 2	Coal
Lakvijaya 3	Coal
Uthuru Janani	Heavy Fuel
Barge CEB	Heavy Fuel
KCCPS -2	Auto Diesel

Power Station	Primary Fuel
Private Thermal	
West Coast	Auto Diesel / Heavy Fuel
ACE Matara	Heavy Fuel
ACE Embilipitiya	Heavy Fuel

Major Incidents reported during the day

October 30, 2023

- 1) Aniyakanda 132/33 kV T/F 01 tripped at 17:50hrs due to the operation of standby earth fault(SEF) protection causing 33kV side of the GSS to be dead(132/33kV T/F 02 had been released for maintenance work at the time of the incident).33kV side of the GSS and all affected feeders were normalized via T/F 02 by 18:07hrs. T/F 01 was normalized at 20:01hrs
- 2) Canyon -N'Laxapana 132kV cct which tripped on 27.10.2023 was normalized at 18:10hrs. Canyon PS resumed generation by 18:06hrs .
- 3) Habarana 132/33kV T/F 03 along with Habarana – New Habarana 132kV cct 01, tripped at 02:29hrs (31.10.2023).The cause of the tripping is unknown yet. T/F 03 and cct 01 are yet to be normalized.
- 4) Kukule pond spilling stopped at 07:45hrs and started again at 18:15hrs. Spilling continues to the present hour.