

# Generation and Reservoirs Statistics

October 29, 2023



**PUBLIC UTILITIES COMMISSION OF SRI LANKA**

## 1. Daily Generation Mix in MWh

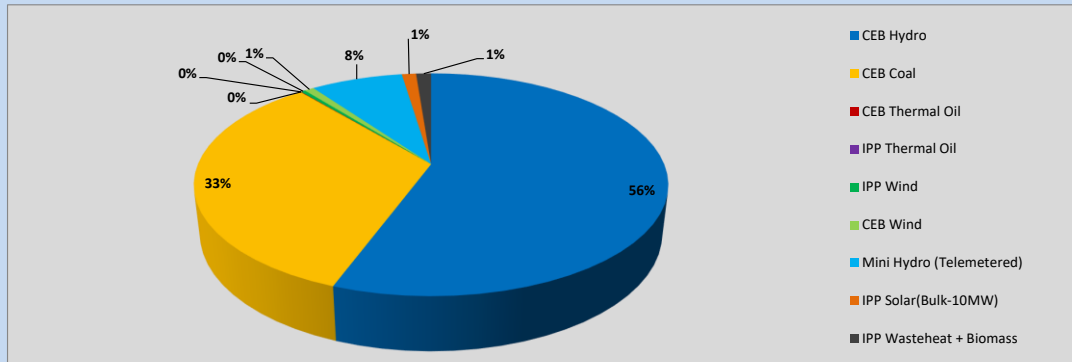


Table 01

	Generation (MWh)
CEB Hydro	15,983
CEB Coal	9,558
CEB Thermal Oil	14
IPP Thermal Oil	-
IPP Wind	108
CEB Wind	223
Mini Hydro (Telemetered)	2,155
IPP Solar (Bulk)	333
IPP Waste heat + Biomass	351
<b>Total Generation (Excluding estimated figures)</b>	<b>28,725</b>
* Estimated unserved energy	0
* Estimated Mini Hydro (Non telemetered)	2705
* Estimated IPP Solar PV (Bulk 1-10MW)	304
* Estimated Solar Roof Top PV	1930
<b>Total Generation (Including estimated figures)</b>	<b>33,664</b>

\* Estimated figures of CEB generation report

Table 02

	Installed Capacity (MW)
CEB Hydro	1409
CEB Coal	810
CEB Thermal Oil	781
IPP Thermal Oil (West Coast, ACE Matara and ACE Embilipitiya)	387
IPP Wind	148
CEB Wind	100
Mini Hydro	416
IPP Waste heat + Biomass	50
IPP Solar	130
Rooftop Solar* (Ordinary)	267
Rooftop Solar* (LT Bulk)	256
Rooftop Solar* (HT Bulk)	61

Data Source - Monthly Review Report [May-2023]

## 2. Cumulative Dispatch

Following data excludes the contribution from roof top solar, non telemetered solar and mini hydro plants

Table 03 - Current Month

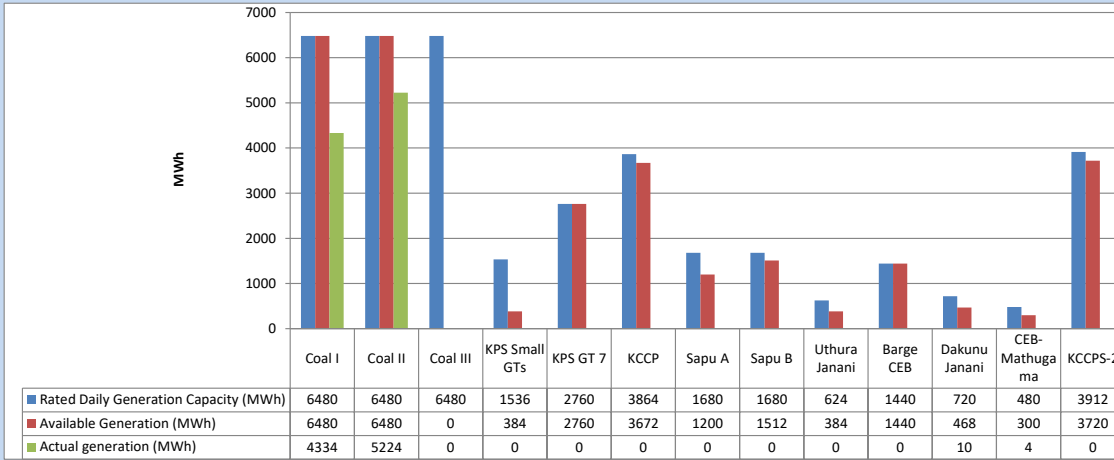
Category	Dispatch (GWh)	
CEB Hydro	506	48.85%
CEB Coal	334	32.29%
CEB Thermal Oil	59	5.73%
IPP Thermal	19	1.82%
SPP Wind	21	2.02%
CEB Wind	24	2.28%
Mini Hydro (Telemetered)	54	5.22%
IPP Solar(Bulk-10MW)	8	0.76%
IPP Waste heat + BMP	8	0.78%
<b>Total</b>	<b>1,036</b>	

Table 04 - Current Year

Category	Dispatch (GWh)	
CEB Hydro	3,071	26.48%
CEB Coal	4,254	36.67%
CEB Thermal Oil	1,953	16.84%
IPP Thermal	1,114	9.60%
SPP Wind	346	2.98%
CEB Wind	355	3.06%
Mini Hydro (Telemetered)	306	2.64%
IPP Solar(Bulk-10MW)	90	0.78%
IPP Waste heat	107	0.93%
<b>Total</b>	<b>11,600</b>	

### 3. CEB owned Thermal Plant Dispatch

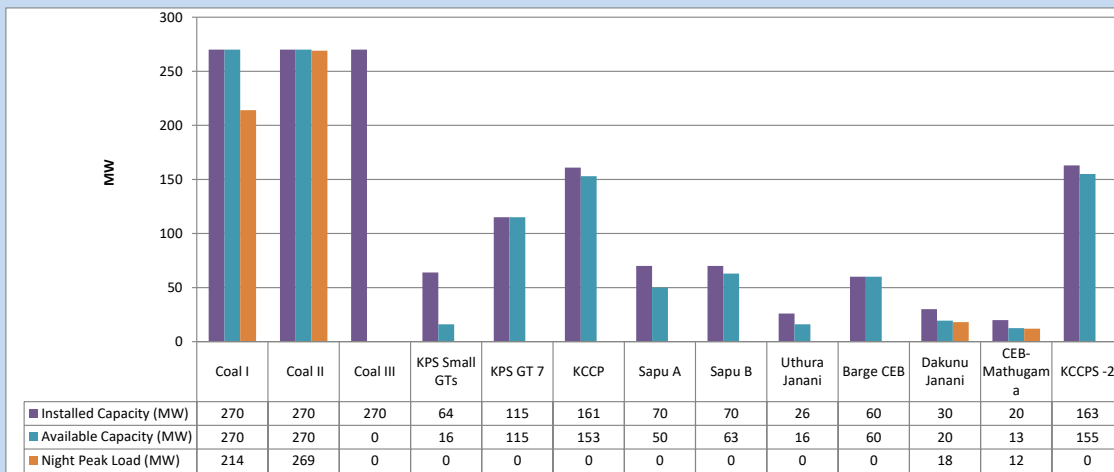
October 29, 2023



Available Generation is estimated based on plant availability at 6.00am on

October 30, 2023

### 4. CEB owned Thermal Plant Loading at the Night Peak

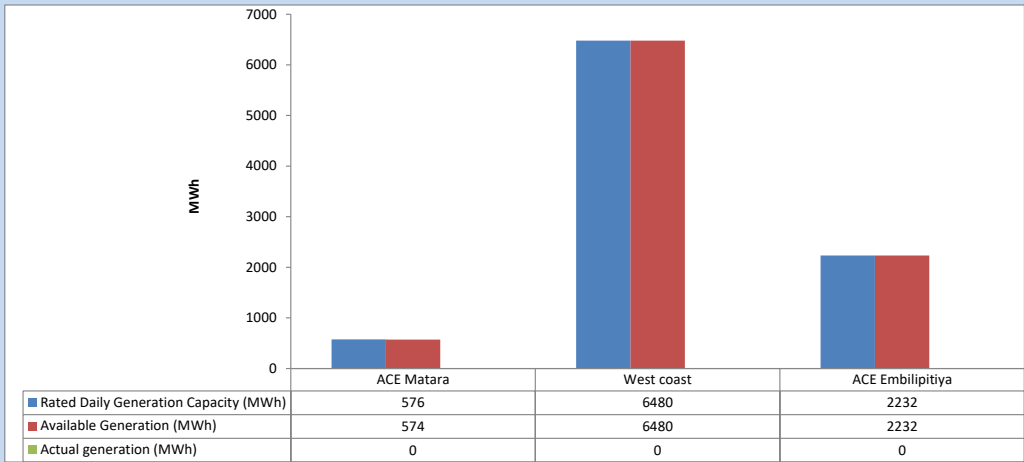


Plant availability is recorded at 6.00 am on

October 30, 2023

5. IPP owned Thermal Plant Dispatch

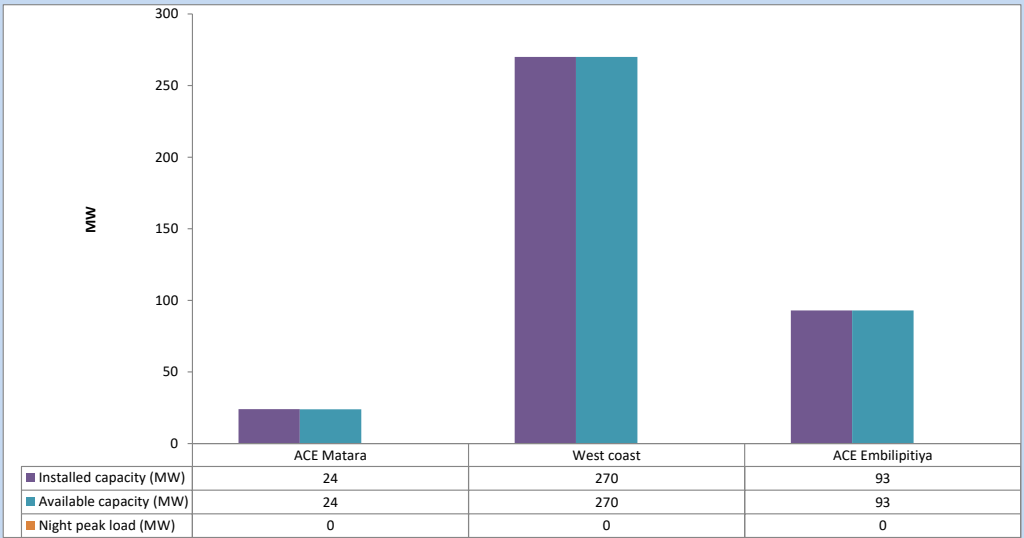
October 29, 2023



Available Generation is estimated based on plant availability at 6.00am on

October 30, 2023

6. IPP owned Thermal Plant Loading at the Night Peak

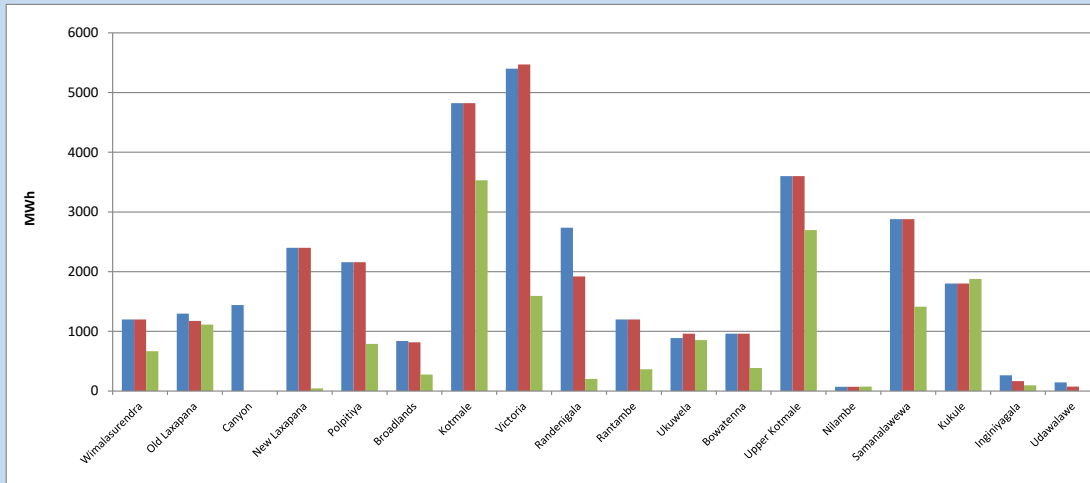


Plant availability is recorded at 6.00 am on

October 30, 2023

### 7. Major Hydro Plant Dispatch

October 29, 2023

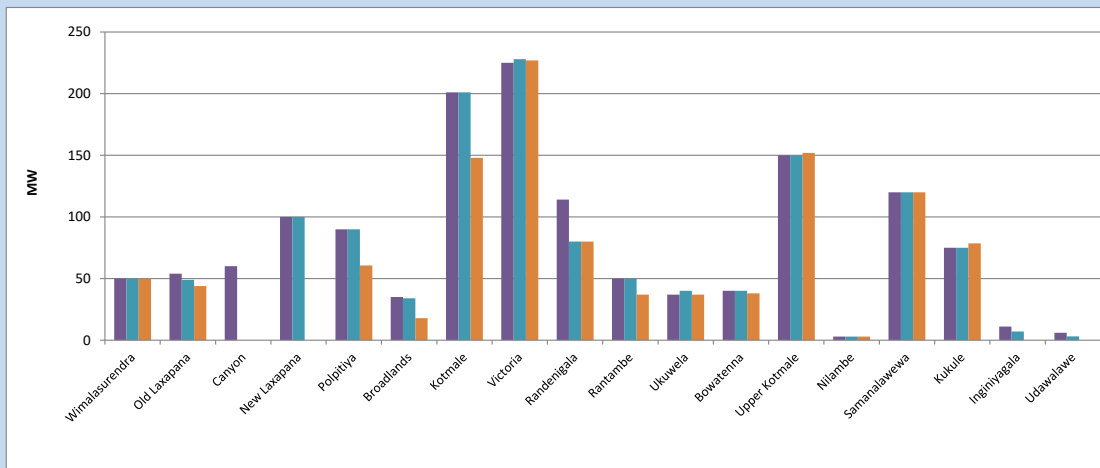


Available Generation is estimated based on plant availability at 6.00am on October 30, 2023  
Broadlands power plant is operating in the Commissioning Stage

October 30, 2023

### 8. Major Hydro Plant Loading at Night Peak

October 29, 2023



Plant availability is recorded at 6.00 am on October 30, 2023  
Broadlands power plant is operating in the Commissioning Stage

October 30, 2023

## 9. Summary of Major Plant performance

Table 05

Plant	Installed Capacity (MW)	Plant Availability (MW)	Night peak Load (MW)	Plant Dispatch (MWh)
Wimalasurendra	50	50	50	669
Old Laxapana	54	49	44	1,113
Canyon	60	0	0	0
New Laxapana	100	100	0	44
Polpitiya	90	90	61	790
Broadlands	35	34	18	278
Kotmale	201	201	148	3,530
Victoria	225	228	227	1,592
Randenigala	114	80	80	204
Rantambe	50	50	37	365
Ukuwela	37	40	37	855
Bowatenna	40	40	38	387
Upper Kotmale	150	150	152	2,695
Nilambe	3	3	3	76
Samanalawewa	120	120	120	1,413
Kukule	75	75	79	1,876
Inginiyagala	11	7	0	96
Udawalawe	6	3	0	0
Puttalam Coal I	270	270	214	4,334
Puttalam Coal II	270	270	269	5,224
Puttalam Coal III	270	0	0	0
KPS Small GTs	64	16	0	0
KPS GT 7	115	115	0	0
KCCP	161	153	0	0
Sapugaskanda A	70	50	0	0
Sapugaskanda B	70	63	0	0
Uthura Janani	26	16	0	0
Barge CEB	60	60	0	0
CEB-Hambantota	30	20	18	10
CEB-Mathugama	20	13	12	4
ACE Matara	24	24	0	0
Asia Power	50	0	0	0
KCCPS -2	163	155	0	0
West Coast	270	270	0	0
Nothern Power	36	0	0	0
ACE Embilipitiya	93	93	0	0
Total	3,483	2,907	1,699	28,725

Plant availability is the availability recorded at 6 am on

October 30, 2023

### 10. Contribution to the Night Peak in MW

October 29, 2023

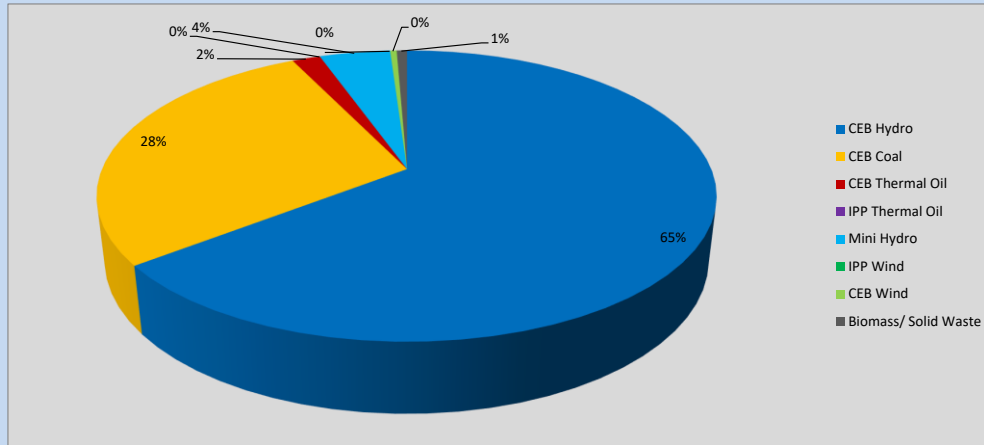


Table 06

CEB Hydro	1105	MW
CEB Coal	483	MW
CEB Thermal Oil	30	MW
IPP Thermal Oil	0	MW
Mini Hydro (Telemetered)	76	MW
IPP Wind	0	MW
CEB Wind	7	MW
Biomass/ Solid Waste	11	MW

#### Recorded Peak Demand Data

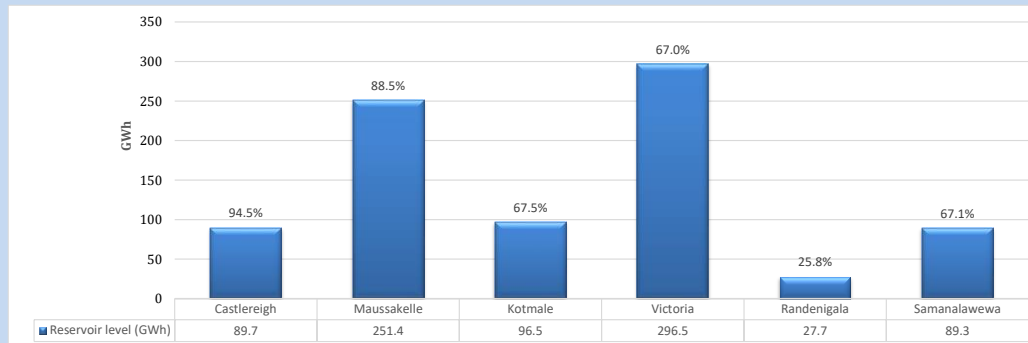
Table 07

Night Peak*	1,711	MW
Day Peak Maximum Demand	1,274	MW
Day Peak Minimum Demand	911	MW
Off Peak Minimum Demand	987	MW

Above figures are excluding contribution from roof top solar, non telemetered solar and mini hydro plants

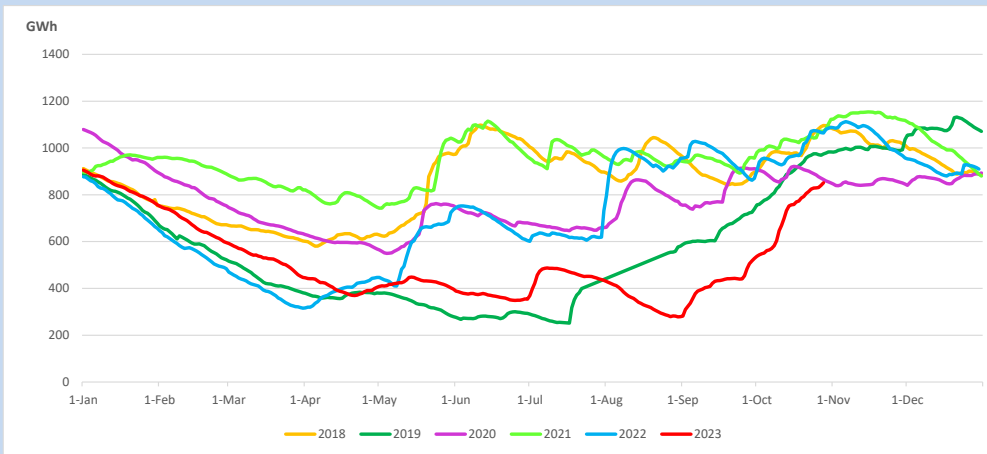
#### Reservoir Levels -

as at 06.00 Hr on October 30, 2023

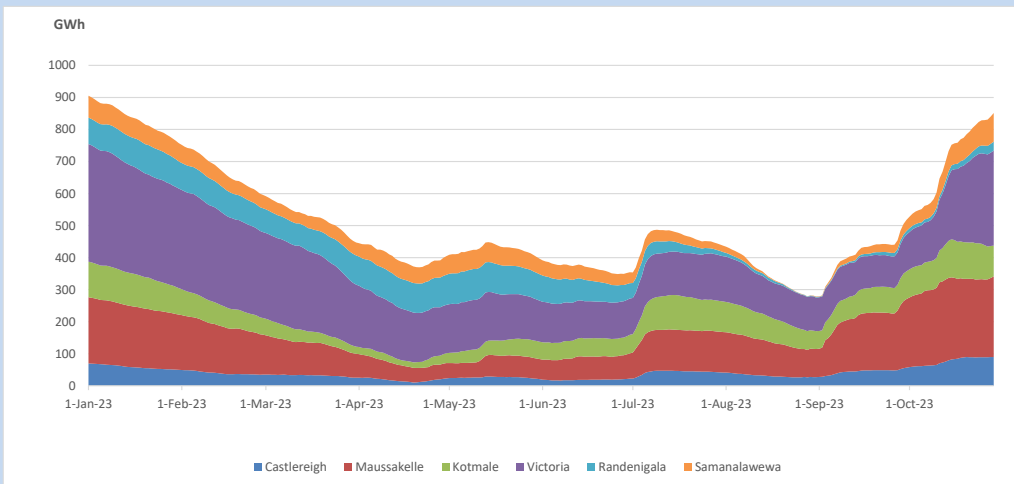


Total Reservoir Level            851.1 GWh  
 % of Total capacity                70.6%

### 11. Comparison of Total Reservoir Storage Levels with Past Years

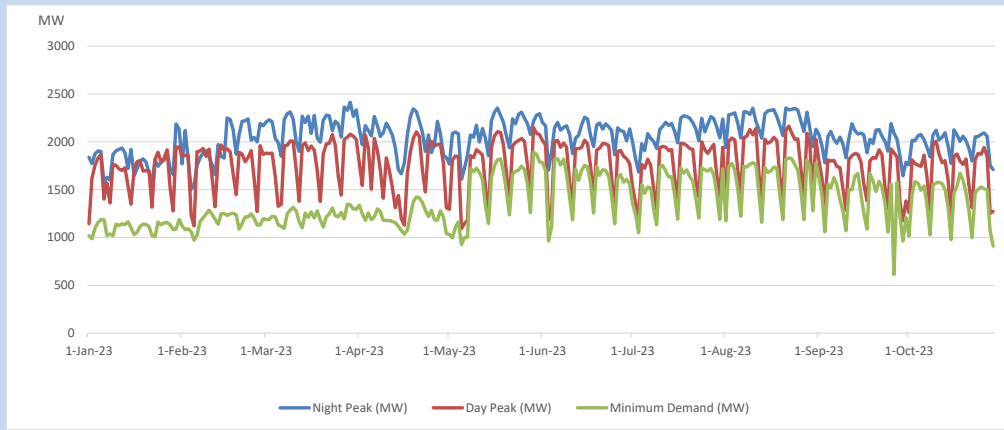


### 12. Variation of Major Hydro Reservoir Levels in the current year (GWh)





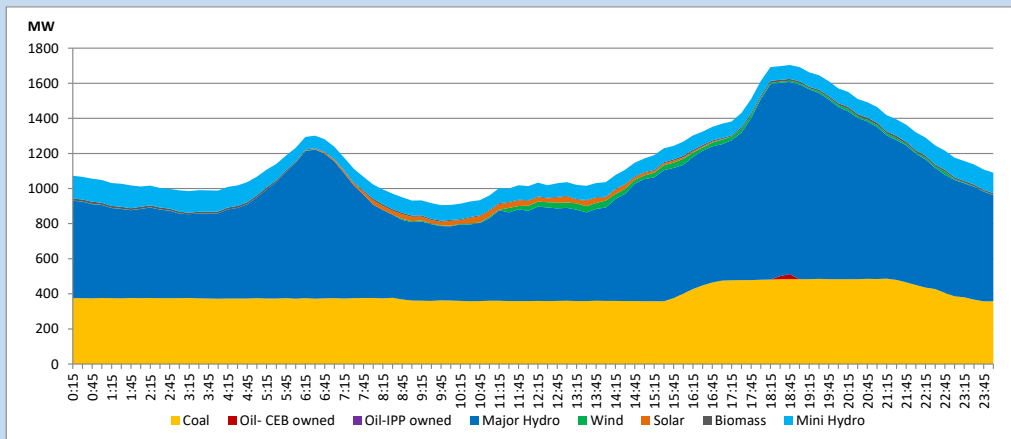
### 13. Variation of Demand during the current year



The above figures are excluding contribution from roof top solar, non telemetered solar and mini hydro plants

### 14. Daily Load Curve

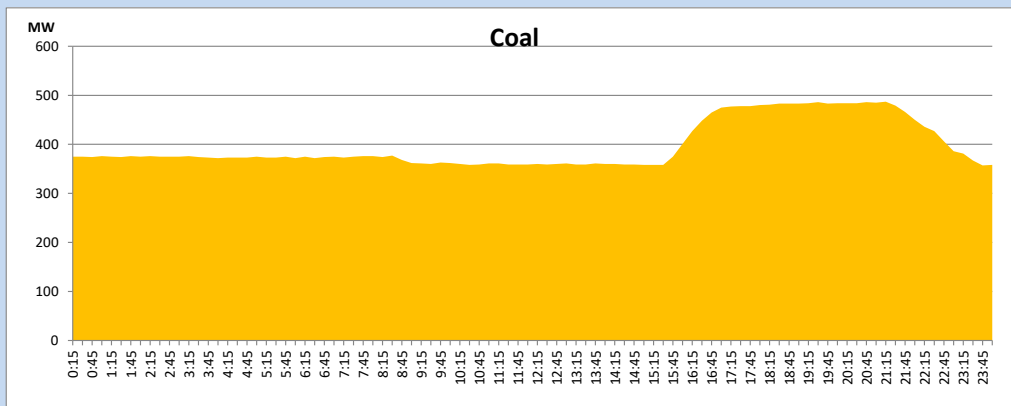
October 29, 2023



Solar and wind data is based on Telemetered Power Stations only

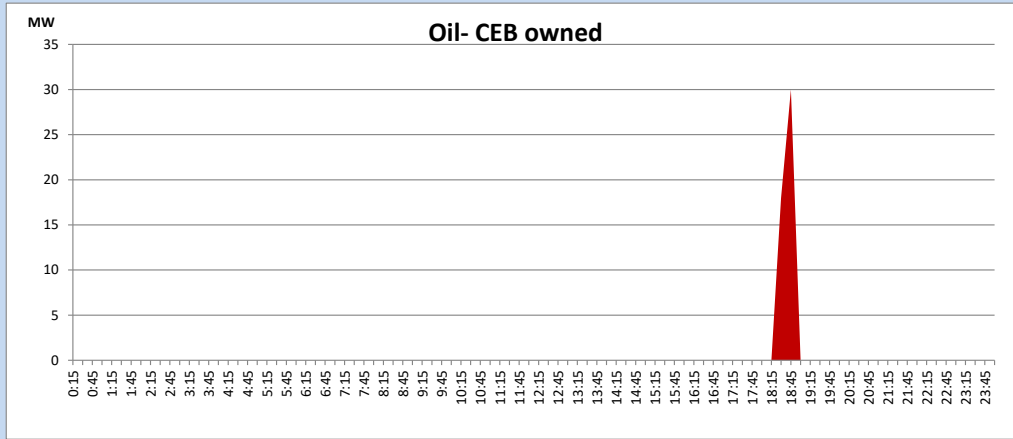
### Coal Generation during

October 29, 2023



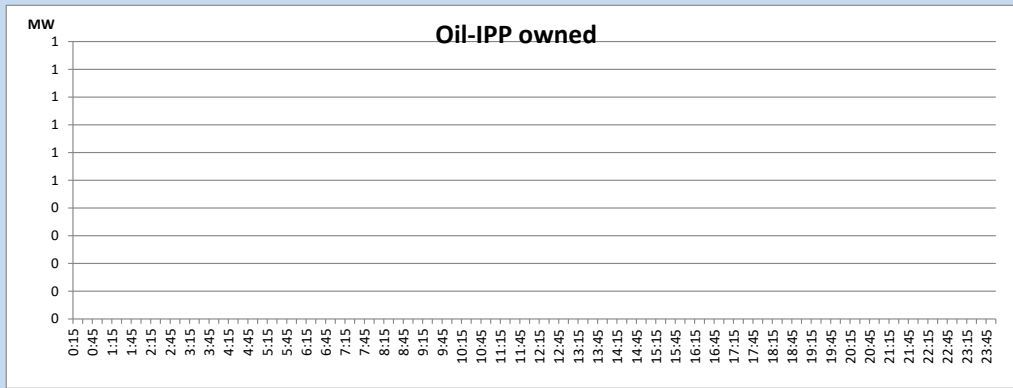
CEB Oil Plant Generation during

October 29, 2023



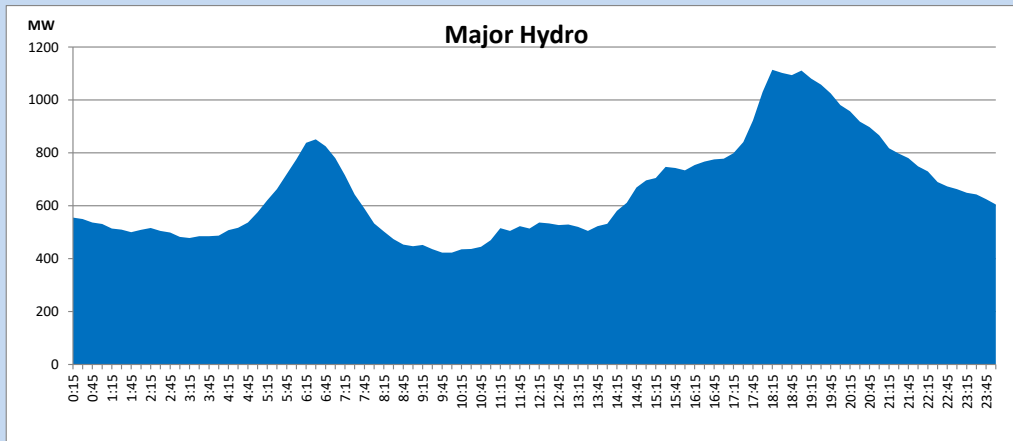
IPP Oil Plant Generation during

October 29, 2023



Major Hydro Generation during

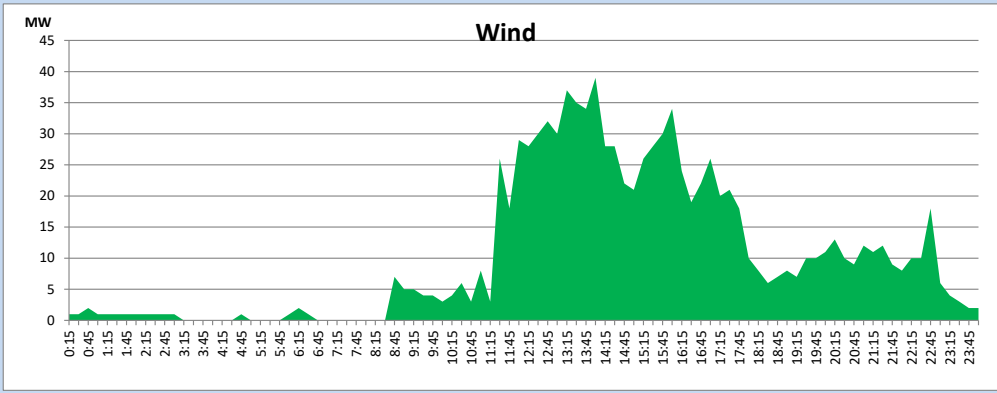
October 29, 2023



## Wind Generation during

October 29, 2023

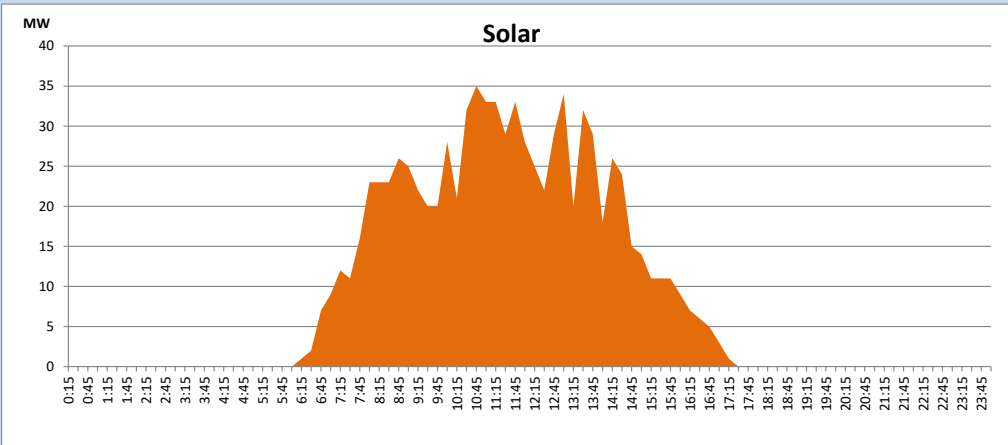
Based on Telemetered Power Stations only



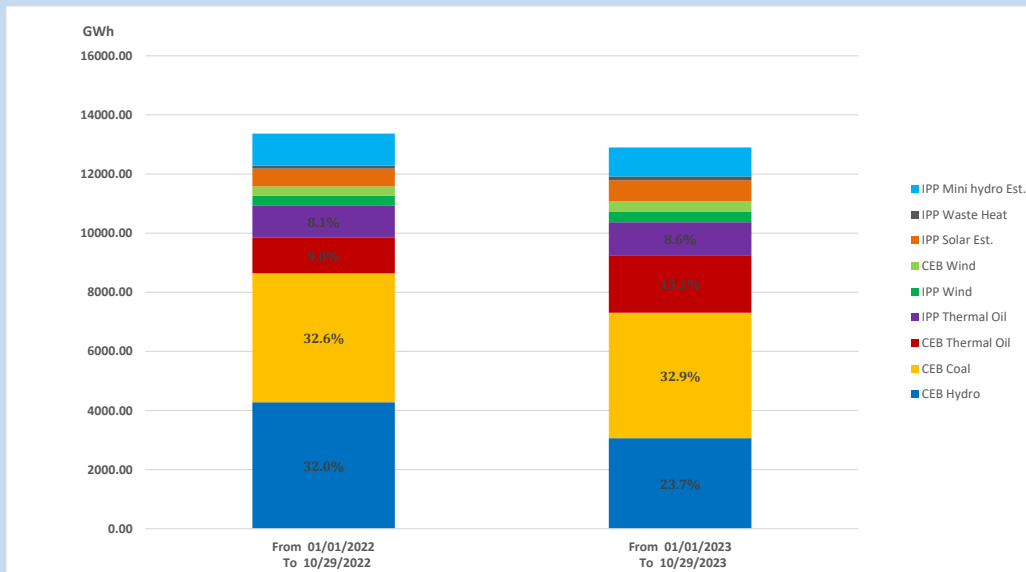
## Solar Generation during

October 29, 2023

Based on Telemetered Power Stations only



## 15. Cumulative Dispatch Comparison with Last Year



### Cumulative dispatch

From 01/01/2022 To 10/29/2022

13369 GWh

From 01/01/2023 To 10/29/2023

12901 GWh

The above figures are including contribution from roof top solar, non telemetered solar and mini hydro plants (figures have been adjusted based on the data from the CEB monthly review reports.)

Thermal Plant Fuel types

Table 08

Power Station	Primary Fuel
CEB Thermal	
Sapugaskanda 1	Heavy Fuel
Sapugaskanda 2	Heavy Fuel
Kelanitissa Small Gas Turbines	Auto Diesel
GT 7 - Kelanitissa	Auto Diesel
Kelanitissa CCY	Naphtha or Diesel
Lakvijaya 1	Coal
Lakvijaya 2	Coal
Lakvijaya 3	Coal
Uthuru Janani	Heavy Fuel
Barge CEB	Heavy Fuel
KCCPS -2	Auto Diesel

Power Station	Primary Fuel
Private Thermal	
West Coast	Auto Diesel / Heavy Fuel
ACE Matara	Heavy Fuel
ACE Embilipitiya	Heavy Fuel

Major Incidents reported during the day

October 29, 2023

- 1) Canyon machines could not dispatched due to the unavailability of Canyon – N/Laxapana 132kV cct
- 2) Kukule pond spilling continues to present hour.
- 3) N'Laxapana both units made unavailable at 18:13hrs. N' Laxapana unit 01 and 02 resumed generation at 20:59hrs and 22:30hrs, respectively