

Generation and Reservoirs Statistics

November 27, 2023



PUBLIC UTILITIES COMMISSION OF SRI LANKA

1. Daily Generation Mix in MWh

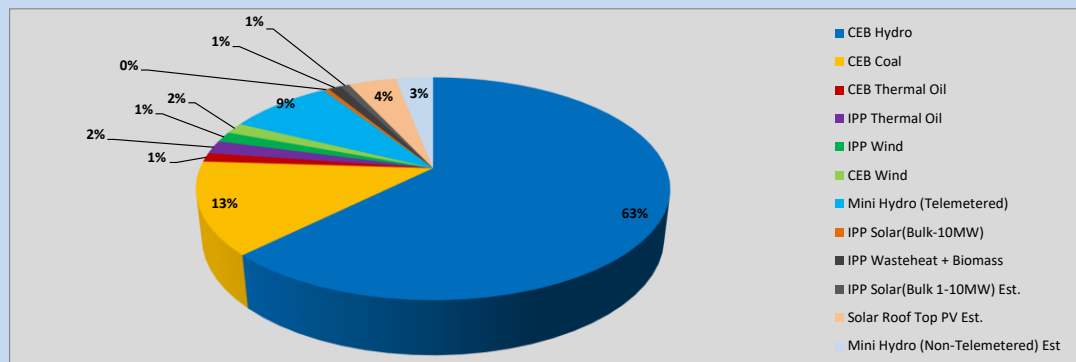


Table 01

	Generation (MWh)
CEB Hydro	26,331
CEB Coal	5,651
CEB Thermal Oil	538
IPP Thermal Oil	807
IPP Wind	637
CEB Wind	670
Mini Hydro (Telemetered)	3,588
IPP Solar (Bulk)	189
IPP Waste heat + Biomass	442
Total Generation (Excluding estimated figures)	38,853
* Estimated unserved energy	0
* Estimated Mini Hydro (Non telemetered)	1282
* Estimated IPP Solar PV (Bulk 1-10MW)	304
* Estimated Solar Roof Top PV	1640
Total Generation (Including estimated figures)	42,079

* Estimated figures of CEB generation report

Table 02

	Installed Capacity (MW)
CEB Hydro	1409
CEB Coal	810
CEB Thermal Oil	781
IPP Thermal Oil (West Coast, ACE Matara and ACE Embilipitiya)	387
IPP Wind	148
CEB Wind	100
Mini Hydro	422
IPP Waste heat + Biomass	50
IPP Solar	136
Rooftop Solar (Ordinary)	277
Rooftop Solar (LT Bulk)	263
Rooftop Solar (HT Bulk)	70

Data Source - Monthly Review Report [Aug-2023]

2. Cumulative Dispatch

Following data excludes the contribution from roof top solar, non telemetered solar and mini hydro plants

Table 03 - Current Month

Category	Dispatch (GWh)	
CEB Hydro	641	58.93%
CEB Coal	212	19.54%
CEB Thermal Oil	9	0.83%
IPP Thermal	10	0.90%
SPP Wind	7	0.68%
CEB Wind	9	0.85%
Mini Hydro *	131	12.09%
IPP Solar *	59	5.43%
IPP Waste heat + BMP	8	0.73%
Total	1,087	

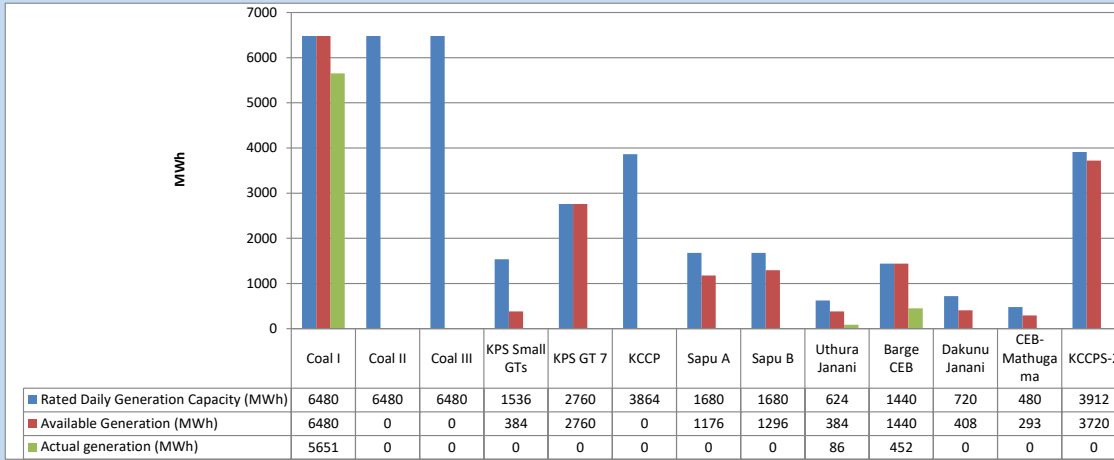
Table 04 - Current Year

Category	Dispatch (GWh)	
CEB Hydro	3,743	26.69%
CEB Coal	4,478	31.93%
CEB Thermal Oil	1,954	13.93%
IPP Thermal	1,124	8.01%
SPP Wind	372	2.65%
CEB Wind	361	2.58%
Mini Hydro *	1,058	7.54%
IPP Solar *	796	5.68%
IPP Waste heat	138	0.99%
Total	14,024	

*Including estimated contribution from non telemetered plants

3. CEB owned Thermal Plant Dispatch

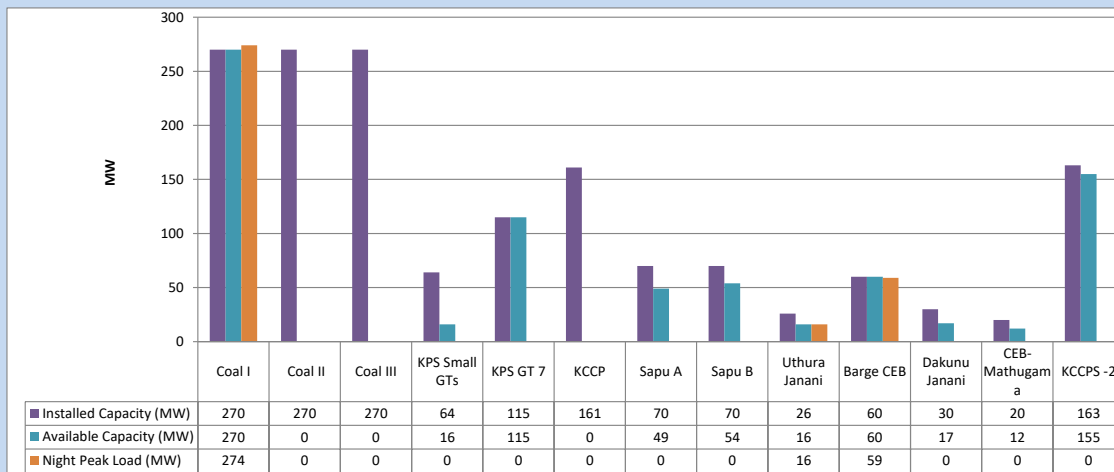
November 27, 2023



Available Generation is estimated based on plant availability at 6.00am on

November 28, 2023

4. CEB owned Thermal Plant Loading at the Night Peak

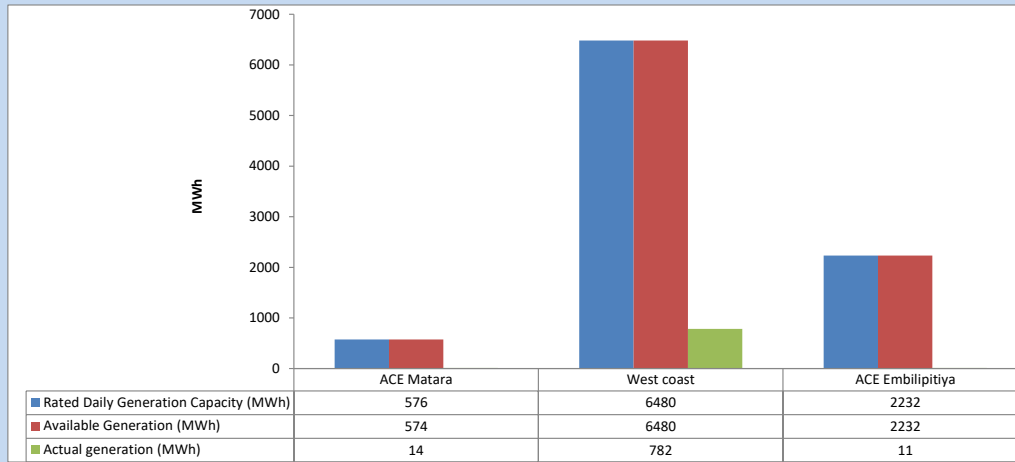


Plant availability is recorded at 6.00 am on

November 28, 2023

5. IPP owned Thermal Plant Dispatch

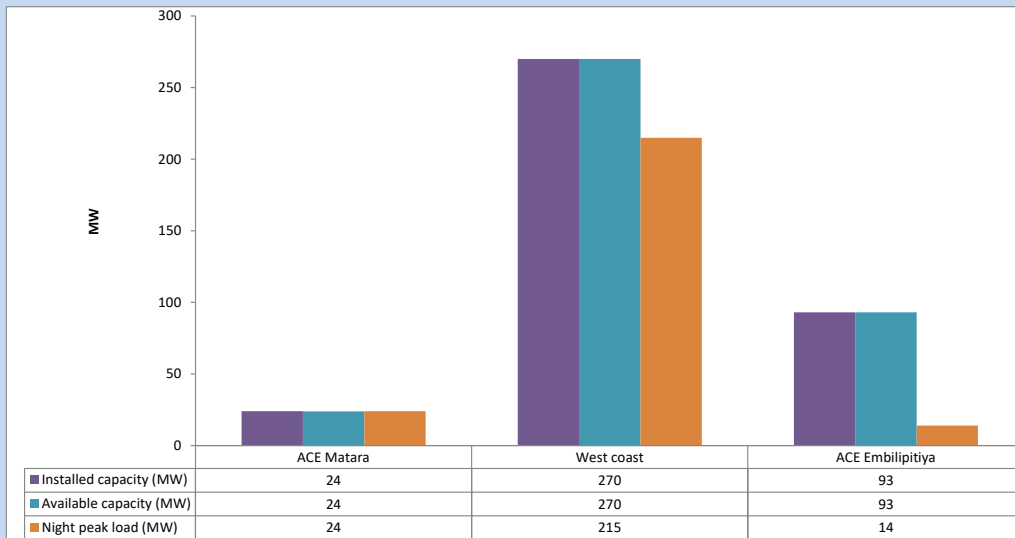
November 27, 2023



Available Generation is estimated based on plant availability at 6.00am on

November 28, 2023

6. IPP owned Thermal Plant Loading at the Night Peak

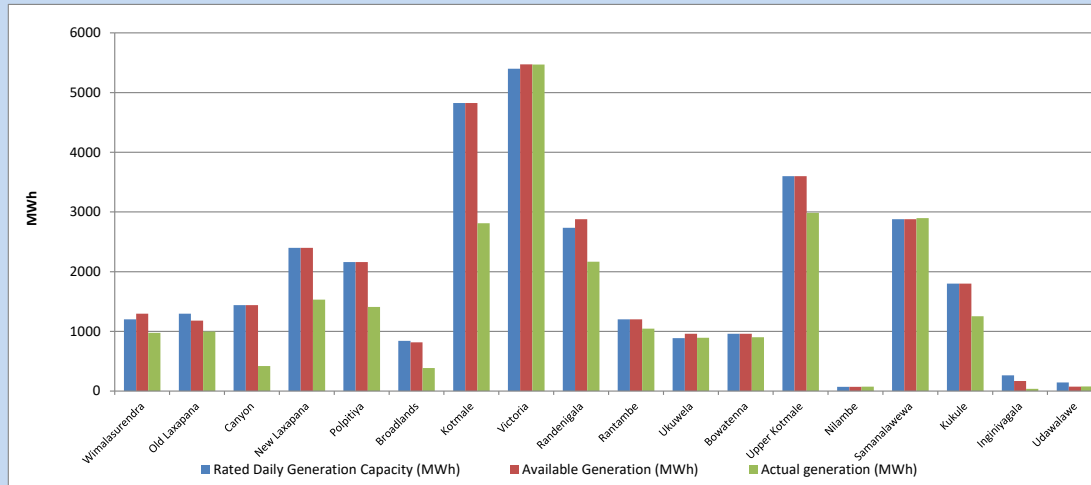


Plant availability is recorded at 6.00 am on

November 28, 2023

7. Major Hydro Plant Dispatch

November 27, 2023

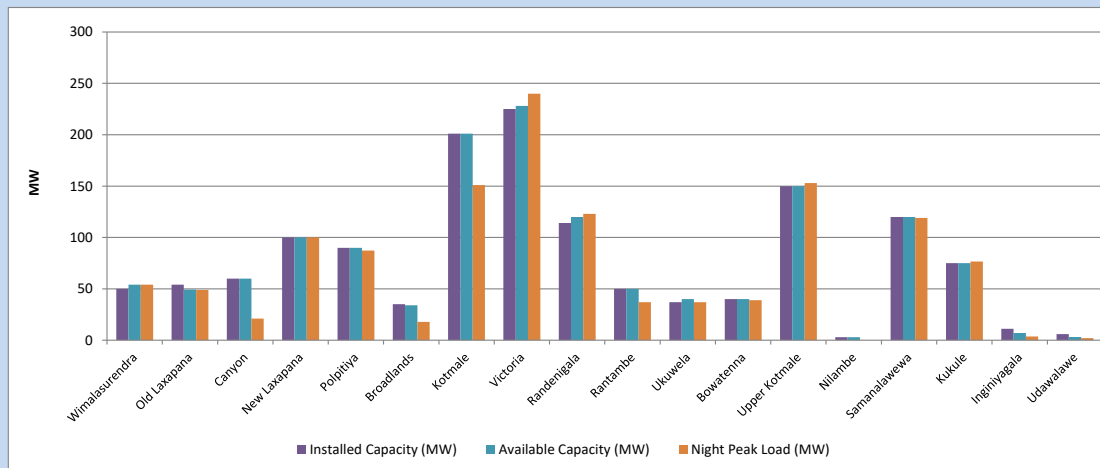


Available Generation is estimated based on plant availability at 6.00am on November 28, 2023
Broadlands power plant is operating in the Commissioning Stage

November 28, 2023

8. Major Hydro Plant Loading at Night Peak

November 27, 2023



Plant availability is recorded at 6.00 am on November 28, 2023
Broadlands power plant is operating in the Commissioning Stage

November 28, 2023

9. Summary of Major Plant performance

Table 05

Plant	Installed Capacity	Plant Availability	Night peak Load	Plant Dispatch
	(MW)	(MW)	(MW)	(MWh)
Wimalasurendra	50	54	54	976
Old Laxapana	54	49	49	998
Canyon	60	60	21	419
New Laxapana	100	100	100	1,532
Polpitiya	90	90	87	1,410
Broadlands	35	34	18	384
Kotmale	201	201	151	2,810
Victoria	225	228	240	5,469
Randenigala	114	120	123	2,167
Rantambe	50	50	37	1,045
Ukuwela	37	40	37	893
Bowatenna	40	40	39	901
Upper Kotmale	150	150	153	2,987
Nilambe	3	3	0	75
Samanalawewa	120	120	119	2,897
Kukule	75	75	77	1,254
Inginiyagala	11	7	4	38
Udawalawe	6	3	2	76
Puttalam Coal I	270	270	274	5,651
Puttalam Coal II	270	0	0	0
Puttalam Coal III	270	0	0	0
KPS Small GTs	64	16	0	0
KPS GT 7	115	115	0	0
KCCP	161	0	0	0
Sapugaskanda A	70	49	0	0
Sapugaskanda B	70	54	0	0
Uthura Janani	26	16	16	86
Barge CEB	60	60	59	452
CEB-Hambantota	30	17	0	0
CEB-Mathugama	20	12	0	0
ACE Matara	24	24	24	14
Asia Power	50	0	0	0
KCCPS -2	163	155	0	0
West Coast	270	270	215	782
Nothern Power	36	0	0	0
ACE Embilipitiya	93	93	14	11
Total	3,483	2,575	2,141	38,853

Plant availability is the availability recorded at 6 am on

November 28, 2023

10. Contribution to the Night Peak in MW

November 27, 2023

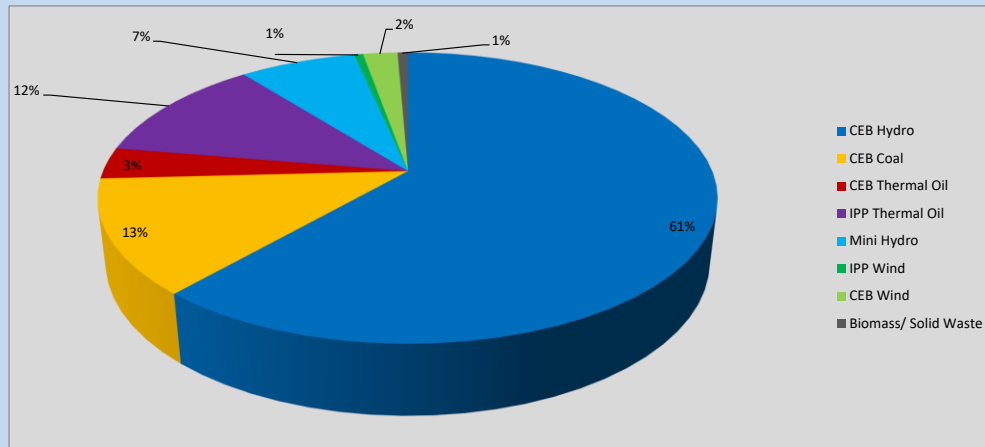


Table 06

CEB Hydro	1324	MW
CEB Coal	274	MW
CEB Thermal Oil	75	MW
IPP Thermal Oil	253	MW
Mini Hydro (Telemetered)	156	MW
IPP Wind	11.8	MW
CEB Wind	46.3	MW
Biomass/ Solid Waste	14	MW

Recorded Peak Demand Data

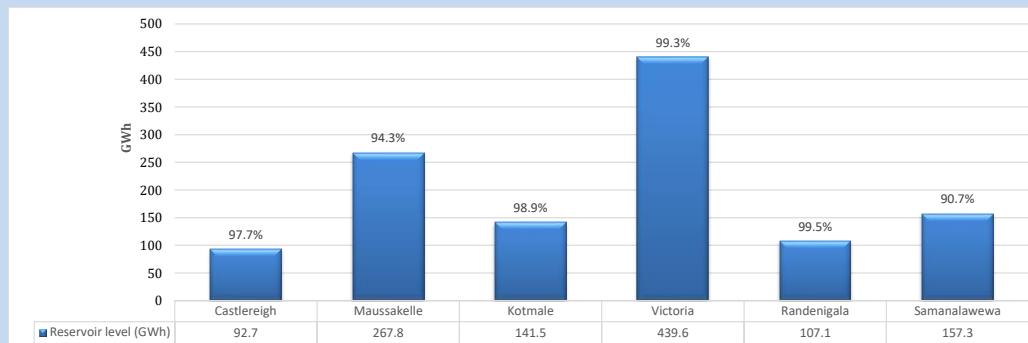
Table 07

Night Peak*	2,155	MW
Day Peak Maximum Demand	1,985	MW
Day Peak Minimum Demand	1,645	MW
Off Peak Minimum Demand	1,050	MW

Above figures are excluding contribution from roof top solar, non telemetered solar and mini hydro plants

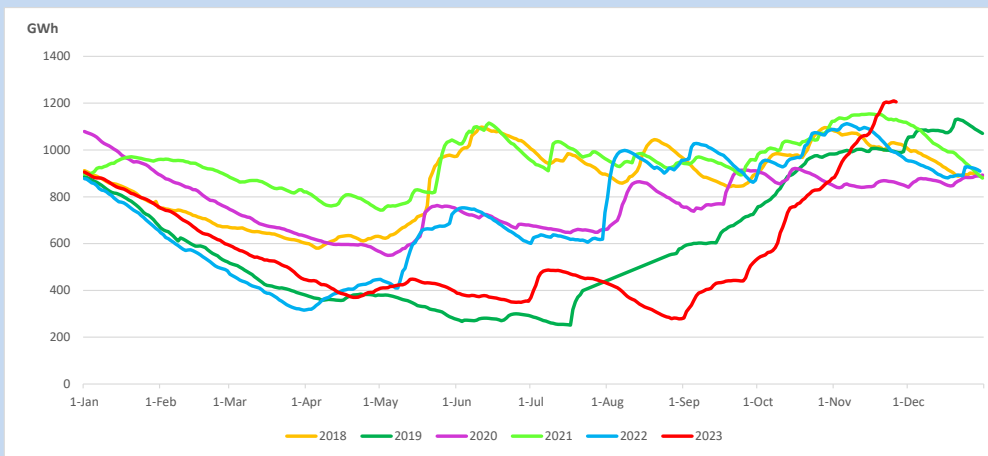
Reservoir Levels -

as at 06.00 Hr on November 28, 2023

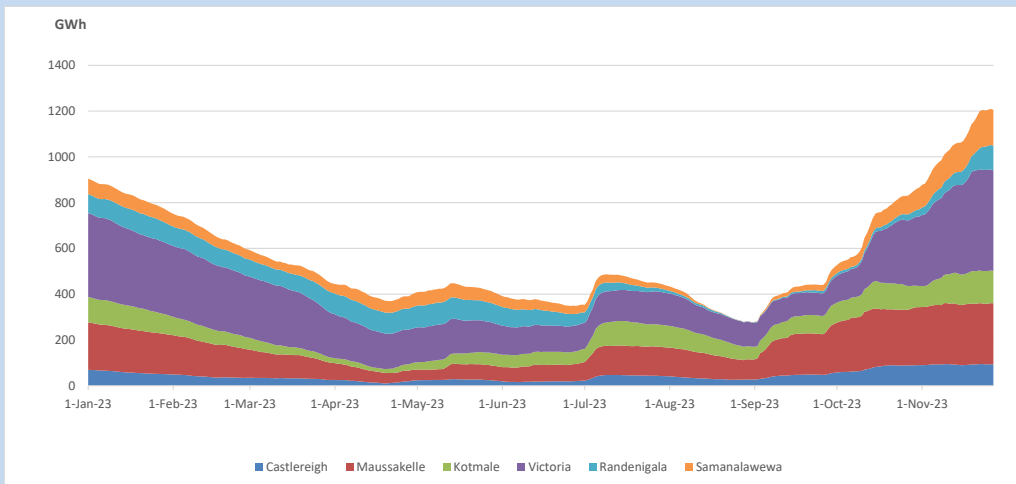


Total Reservoir Level 1206 GWh
 % of Total capacity 96.8%

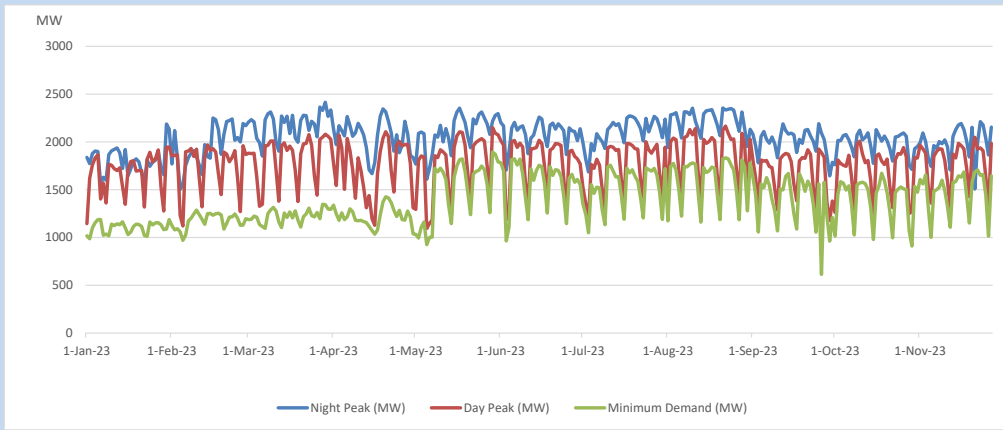
11. Comparison of Total Reservoir Storage Levels with Past Years



12. Variation of Major Hydro Reservoir Levels in the current year (GWh)



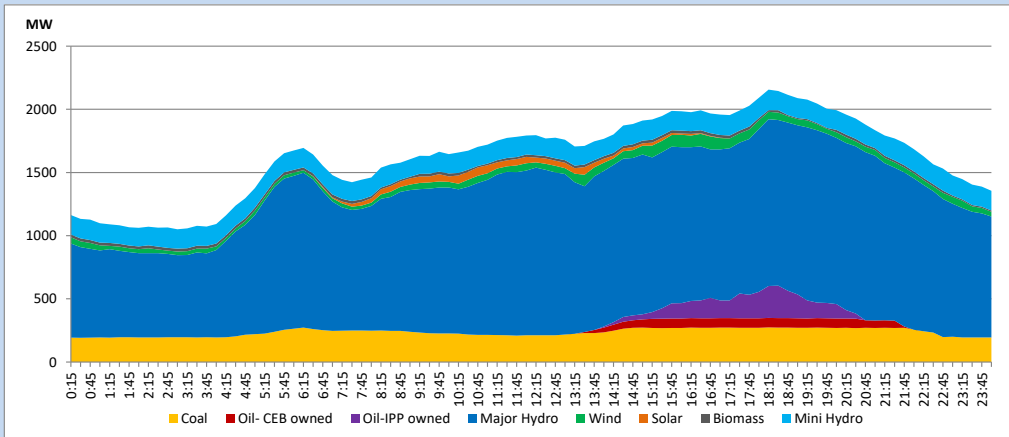
13. Variation of Demand during the current year



The above figures are excluding contribution from roof top solar, non telemetered solar and mini hydro plants

14. Daily Load Curve

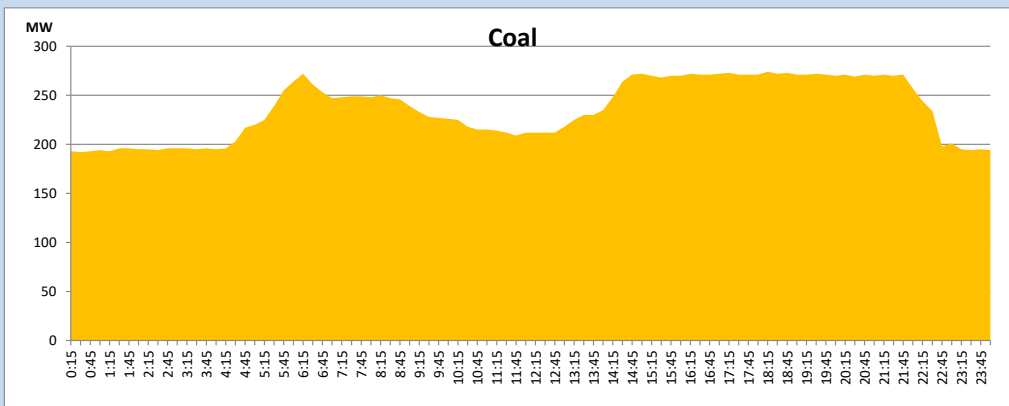
November 27, 2023



Solar and wind data is based on Telemetered Power Stations only

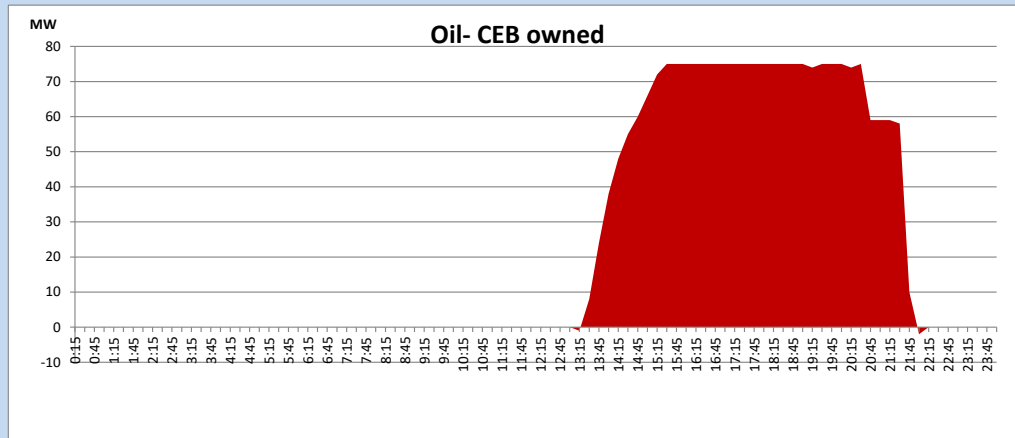
Coal Generation during

November 27, 2023



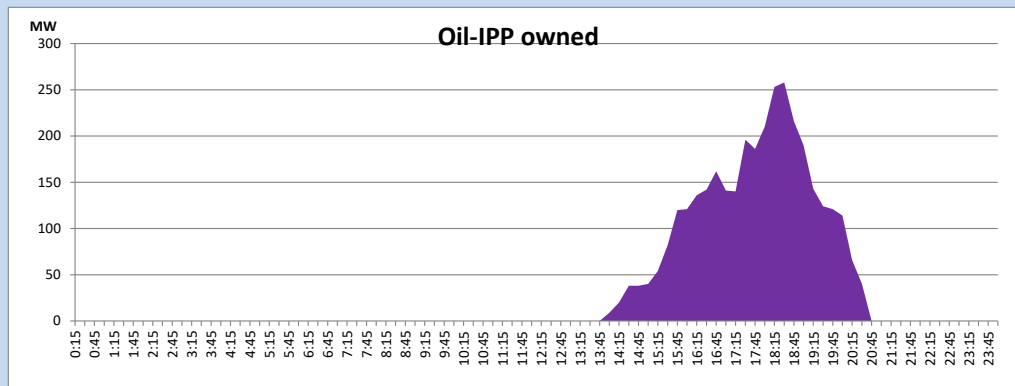
CEB Oil Plant Generation during

November 27, 2023



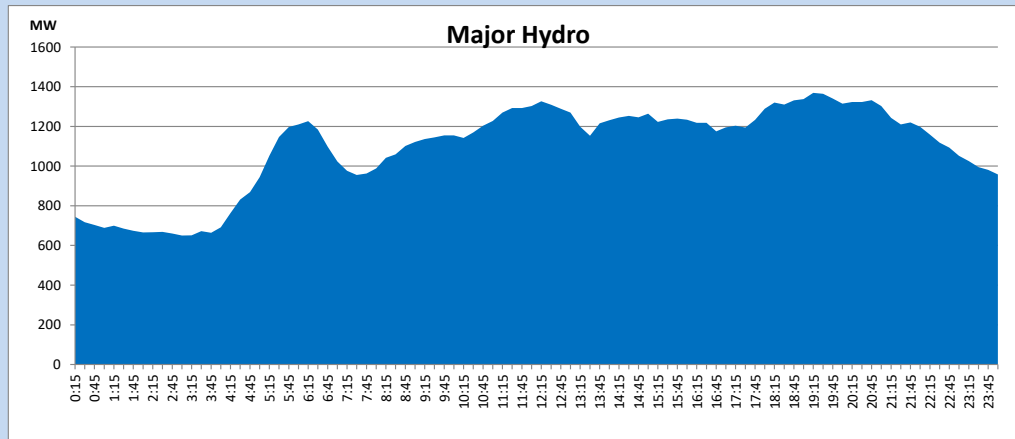
IPP Oil Plant Generation during

November 27, 2023



Major Hydro Generation during

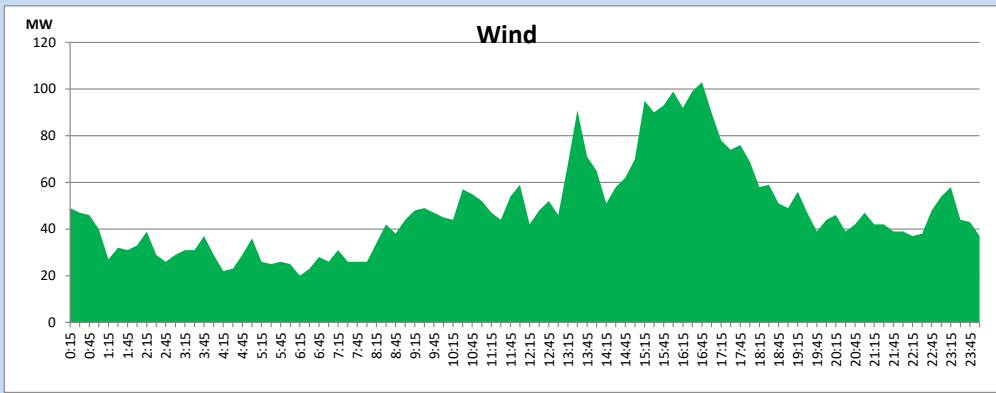
November 27, 2023



Wind Generation during

November 27, 2023

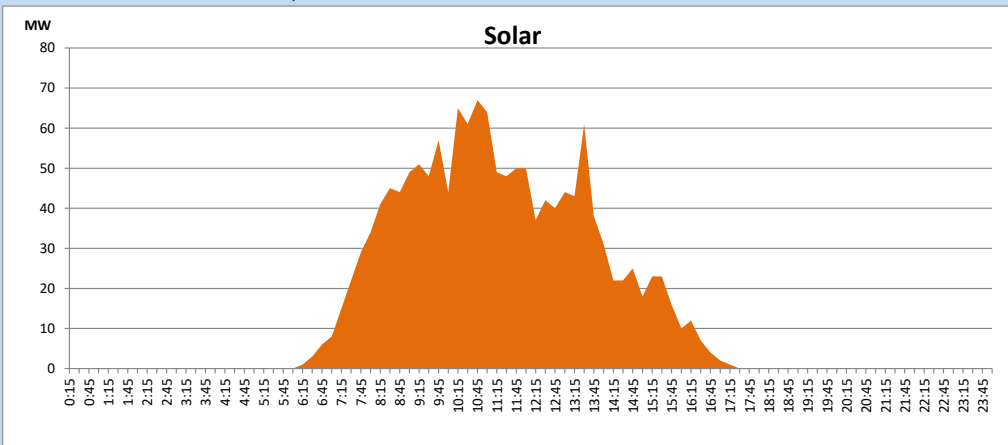
Based on Telemetered Power Stations only



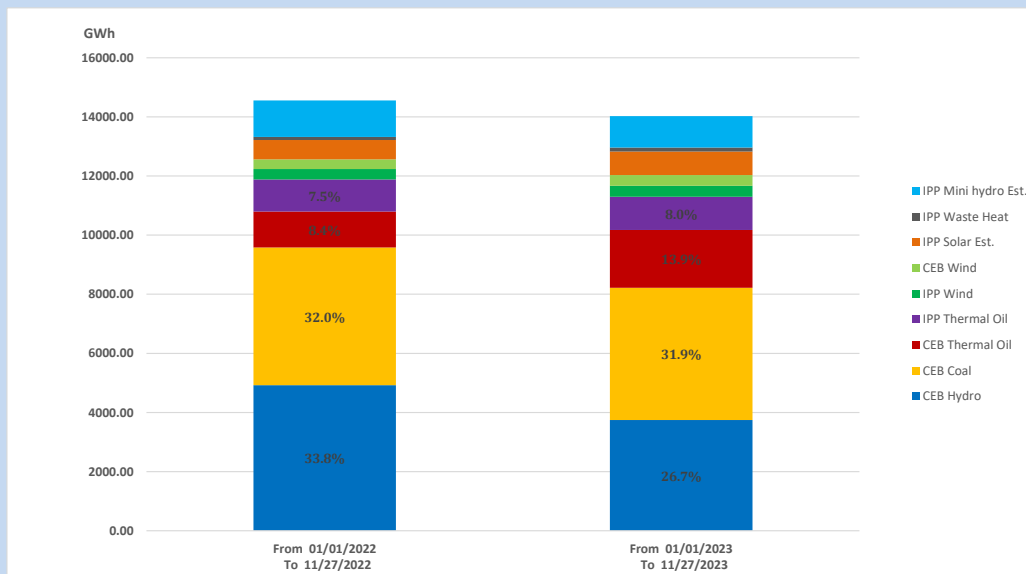
Solar Generation during

November 27, 2023

Based on Telemetered Power Stations only



15. Cumulative Dispatch Comparison with Last Year



Cumulative dispatch
 From 01/01/2022 To 11/27/2022
 From 01/01/2023 To 11/27/2023

14554 GWh
 14024 GWh

The above figures are including contribution from roof top solar, non telemetered solar and mini hydro plants (figures have been adjusted based on the data from the CEB monthly review reports.)

Thermal Plant Fuel types

Table 08

Power Station	Primary Fuel
CEB Thermal	
Sapugaskanda 1	Heavy Fuel
Sapugaskanda 2	Heavy Fuel
Kelanitissa Small Gas Turbines	Auto Diesel
GT 7 - Kelanitissa	Auto Diesel
Kelanitissa CCY	Naphtha or Diesel
Lakvijaya 1	Coal
Lakvijaya 2	Coal
Lakvijaya 3	Coal
Uthuru Janani	Heavy Fuel
Barge CEB	Heavy Fuel
KCCPS -2	Auto Diesel

Power Station	Primary Fuel
Private Thermal	
West Coast	Auto Diesel / Heavy Fuel
ACE Matara	Heavy Fuel
ACE Embilipitiya	Heavy Fuel

Major Incidents reported during the day

November 27, 2023

- 1) The availability of WCP was limited to 200MW from 17:50hrs due to an issue with the establishment of natural circulation in HRSG 02.
- 2) WPS GSS 132/33kV T/F 03 tripped only from 33kV side along with the 33kV feeder 06 and two B/S CBs at 17:59hrs due to the operation of earth fault protection causing 33kV B/S 02 to be dead. The T/F and affected feeders are yet to be normalized.