

Generation and Reservoirs Statistics

November 26, 2023



PUBLIC UTILITIES COMMISSION OF SRI LANKA

1. Daily Generation Mix in MWh

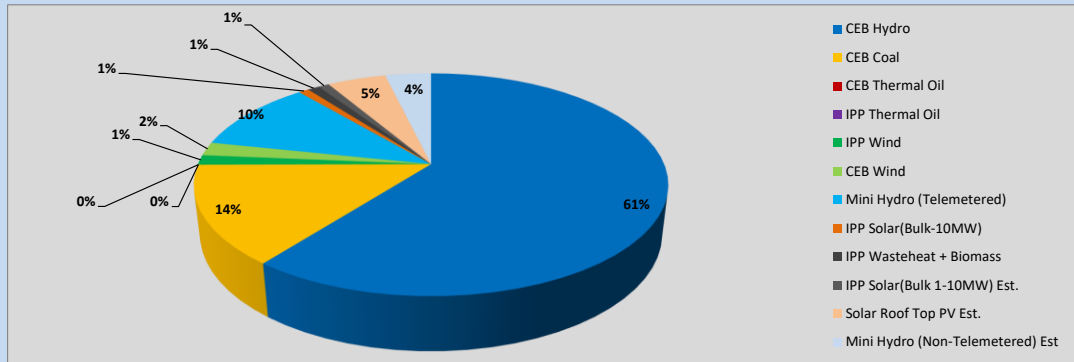


Table 01

	Generation (MWh)
CEB Hydro	20,726
CEB Coal	4,923
CEB Thermal Oil	-
IPP Thermal Oil	-
IPP Wind	491
CEB Wind	673
Mini Hydro (Telemetered)	3,592
IPP Solar (Bulk)	286
IPP Waste heat + Biomass	323
Total Generation (Excluding estimated figures)	31,014
* Estimated unserved energy	0
* Estimated Mini Hydro (Non telemetered)	1278
* Estimated IPP Solar PV (Bulk 1-10MW)	304
* Estimated Solar Roof Top PV	1640
Total Generation (Including estimated figures)	34,236

* Estimated figures of CEB generation report

Table 02

	Installed Capacity (MW)
CEB Hydro	1409
CEB Coal	810
CEB Thermal Oil	781
IPP Thermal Oil (West Coast, ACE Matara and ACE Embilipitiya)	387
IPP Wind	148
CEB Wind	100
Mini Hydro	422
IPP Waste heat + Biomass	50
IPP Solar	136
Rooftop Solar (Ordinary)	277
Rooftop Solar (LT Bulk)	263
Rooftop Solar (HT Bulk)	70

Data Source - Monthly Review Report [Aug-2023]

2. Cumulative Dispatch

Following data excludes the contribution from roof top solar, non telemetered solar and mini hydro plants

Table 03 - Current Month

Category	Dispatch (GWh)	
CEB Hydro	614	58.78%
CEB Coal	207	19.78%
CEB Thermal Oil	8	0.81%
IPP Thermal	9	0.86%
SPP Wind	7	0.64%
CEB Wind	9	0.82%
Mini Hydro *	127	12.12%
IPP Solar *	57	5.45%
IPP Waste heat + BMP	7	0.71%
Total	1,045	

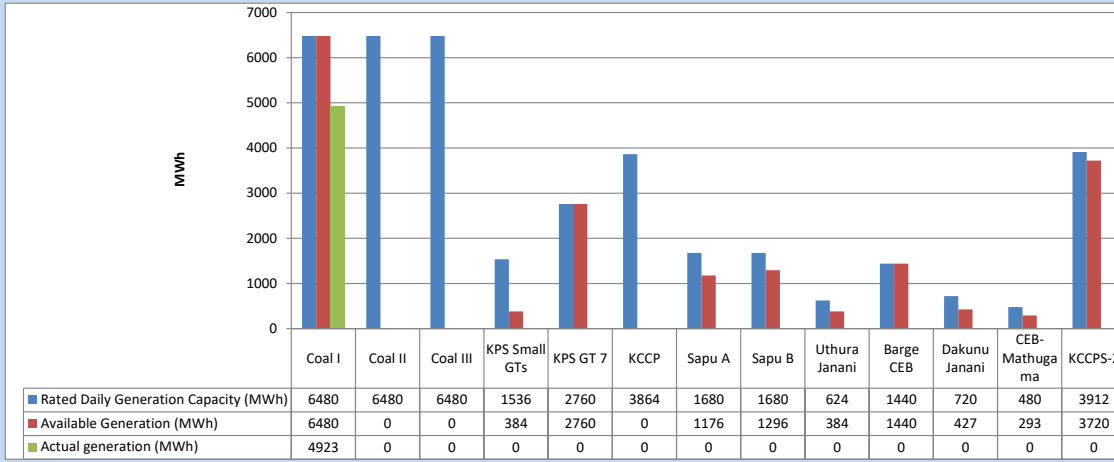
Table 04 - Current Year

Category	Dispatch (GWh)	
CEB Hydro	3,716	26.58%
CEB Coal	4,472	31.99%
CEB Thermal Oil	1,953	13.97%
IPP Thermal	1,123	8.03%
SPP Wind	371	2.66%
CEB Wind	361	2.58%
Mini Hydro *	1,053	7.53%
IPP Solar *	794	5.68%
IPP Waste heat	138	0.99%
Total	13,982	

*Including estimated contribution from non telemetered plants

3. CEB owned Thermal Plant Dispatch

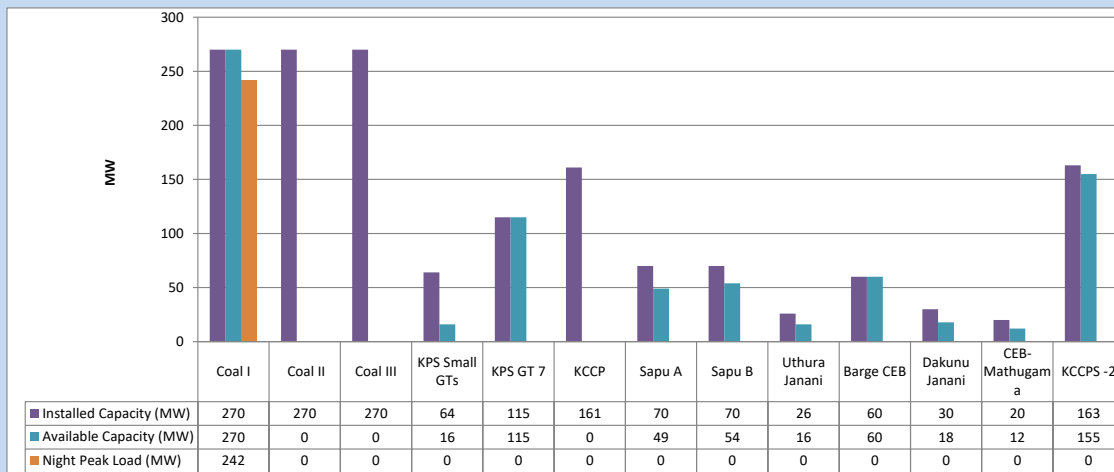
November 26, 2023



Available Generation is estimated based on plant availability at 6.00am on

November 27, 2023

4. CEB owned Thermal Plant Loading at the Night Peak

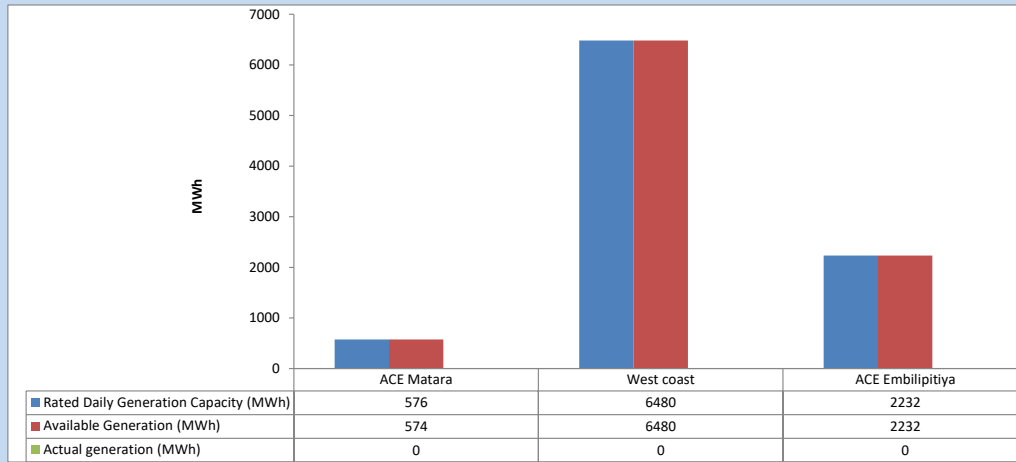


Plant availability is recorded at 6.00 am on

November 27, 2023

5. IPP owned Thermal Plant Dispatch

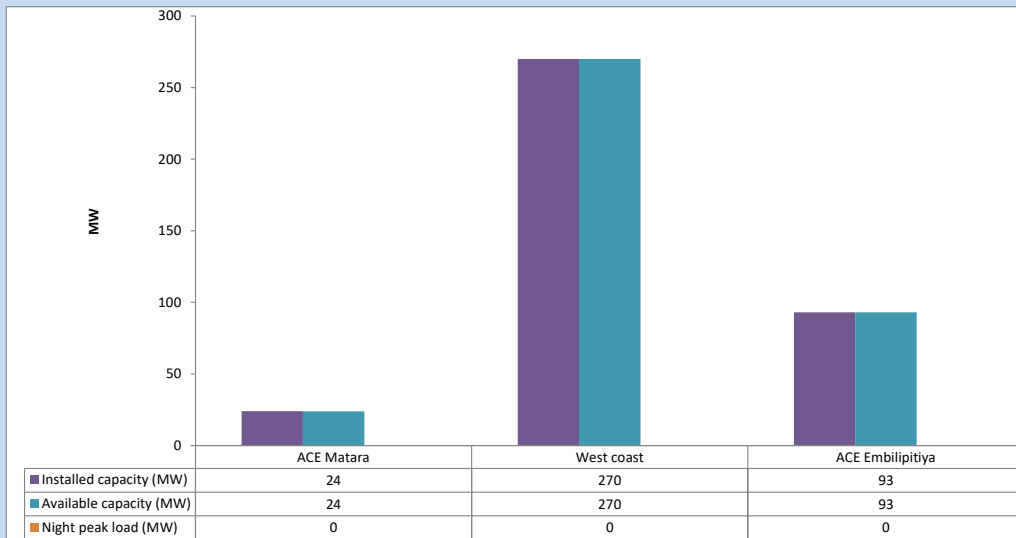
November 26, 2023



Available Generation is estimated based on plant availability at 6.00am on

November 27, 2023

6. IPP owned Thermal Plant Loading at the Night Peak

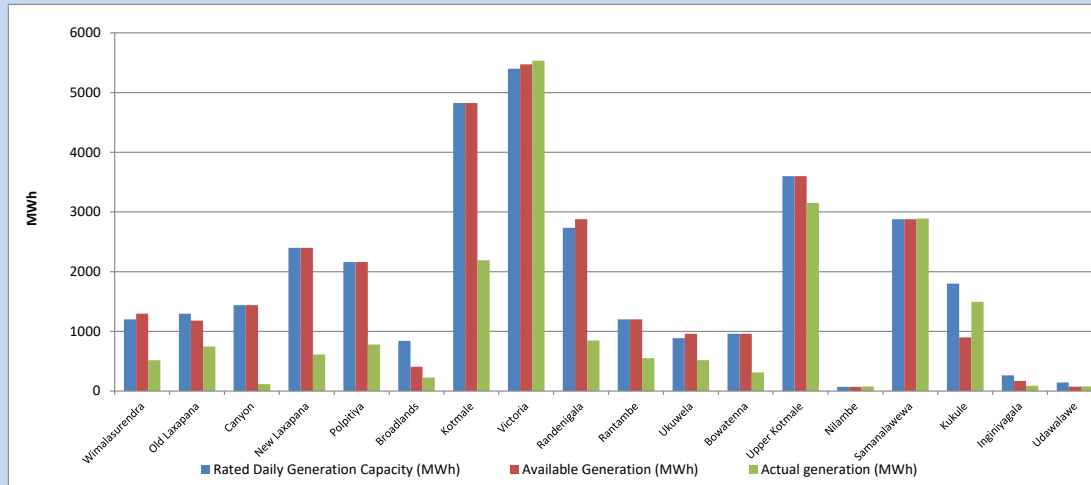


Plant availability is recorded at 6.00 am on

November 27, 2023

7. Major Hydro Plant Dispatch

November 26, 2023

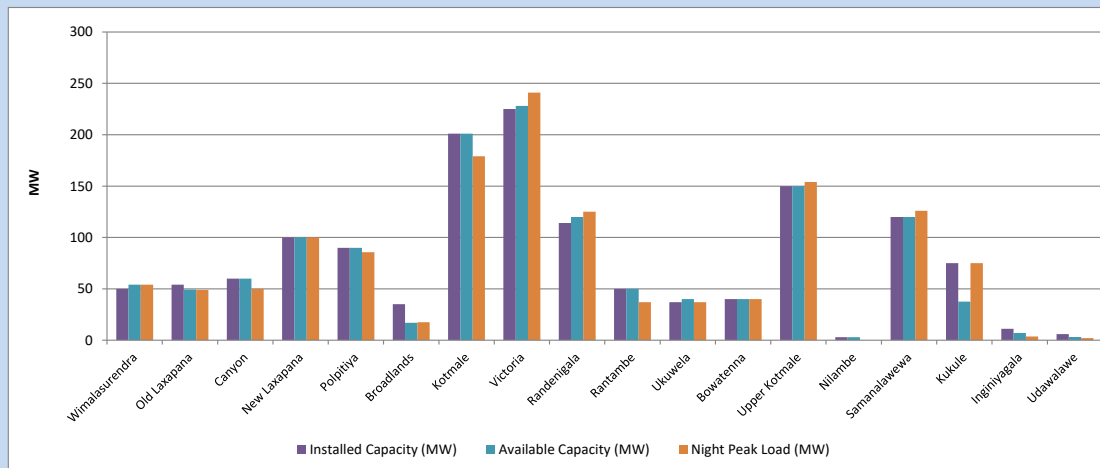


Available Generation is estimated based on plant availability at 6.00am on November 27, 2023
Broadlands power plant is operating in the Commissioning Stage

November 27, 2023

8. Major Hydro Plant Loading at Night Peak

November 26, 2023



Plant availability is recorded at 6.00 am on November 27, 2023
Broadlands power plant is operating in the Commissioning Stage

November 27, 2023

9. Summary of Major Plant performance

Table 05

Plant	Installed Capacity	Plant Availability	Night peak Load	Plant Dispatch
	(MW)	(MW)	(MW)	(MWh)
Wimalasurendra	50	54	54	518
Old Laxapana	54	49	49	745
Canyon	60	60	50	117
New Laxapana	100	100	100	611
Polpitiya	90	90	86	780
Broadlands	35	17	18	226
Kotmale	201	201	179	2,190
Victoria	225	228	241	5,534
Randenigala	114	120	125	846
Rantambe	50	50	37	549
Ukuwela	37	40	37	518
Bowatenna	40	40	40	312
Upper Kotmale	150	150	154	3,151
Nilambe	3	3	0	77
Samanalawewa	120	120	126	2,892
Kukule	75	38	75	1,494
Inginiyagala	11	7	4	89
Udawalawe	6	3	2	78
Puttalam Coal I	270	270	242	4,923
Puttalam Coal II	270	0	0	0
Puttalam Coal III	270	0	0	0
KPS Small GTs	64	16	0	0
KPS GT 7	115	115	0	0
KCCP	161	0	0	0
Sapugaskanda A	70	49	0	0
Sapugaskanda B	70	54	0	0
Uthura Janani	26	16	0	0
Barge CEB	60	60	0	0
CEB-Hambantota	30	18	0	0
CEB-Mathugama	20	12	0	0
ACE Matara	24	24	0	0
Asia Power	50	0	0	0
KCCPS -2	163	155	0	0
West Coast	270	270	0	0
Nothern Power	36	0	0	0
ACE Embilipitiya	93	93	0	0
Total	3,483	2,522	1,854	31,015

Plant availability is the availability recorded at 6 am on

November 27, 2023

10. Contribution to the Night Peak in MW

November 26, 2023

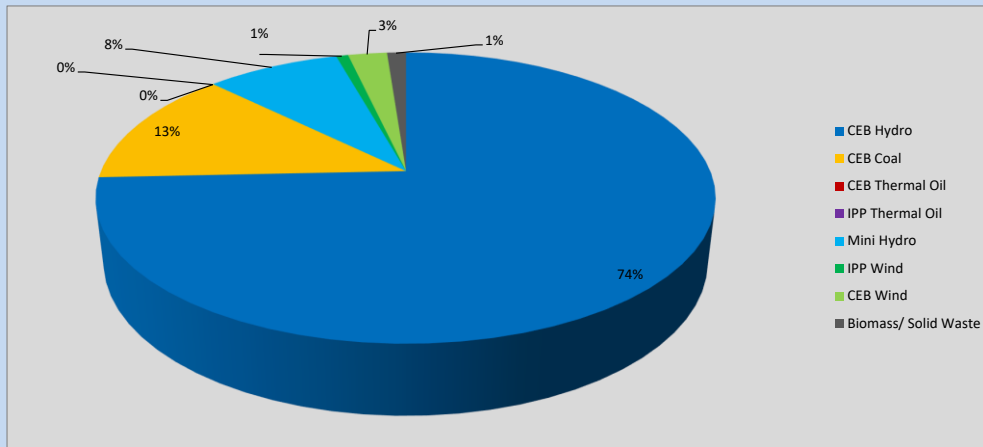


Table 06

CEB Hydro	1384	MW
CEB Coal	242	MW
CEB Thermal Oil	0	MW
IPP Thermal Oil	0	MW
Mini Hydro (Telemetered)	155	MW
IPP Wind	14	MW
CEB Wind	45.2	MW
Biomass/ Solid Waste	22	MW

Recorded Peak Demand Data

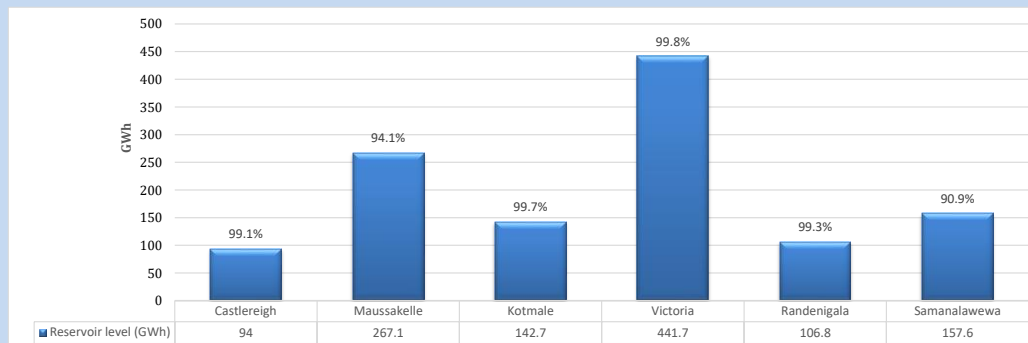
Table 07

Night Peak*	1,862	MW
Day Peak Maximum Demand	1,317	MW
Day Peak Minimum Demand	1,014	MW
Off Peak Minimum Demand	1,116	MW

Above figures are excluding contribution from roof top solar, non telemetered solar and mini hydro plants

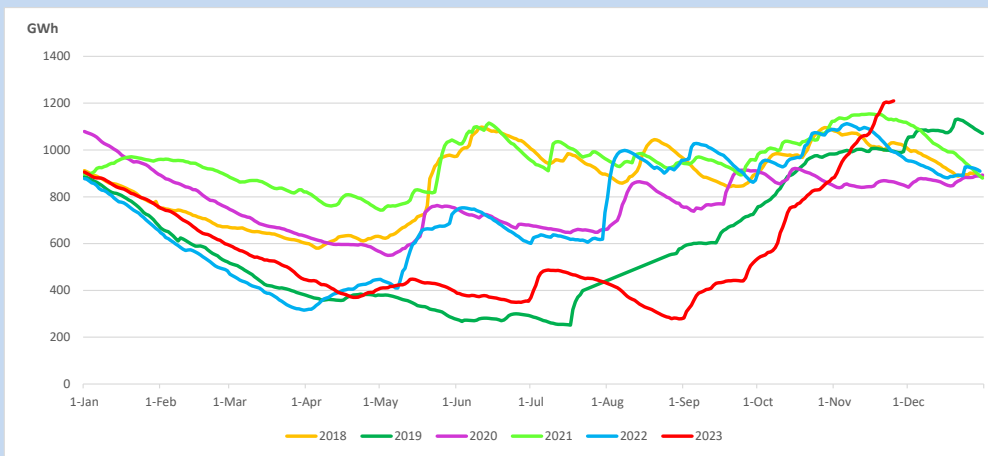
Reservoir Levels -

as at 06.00 Hr on November 27, 2023

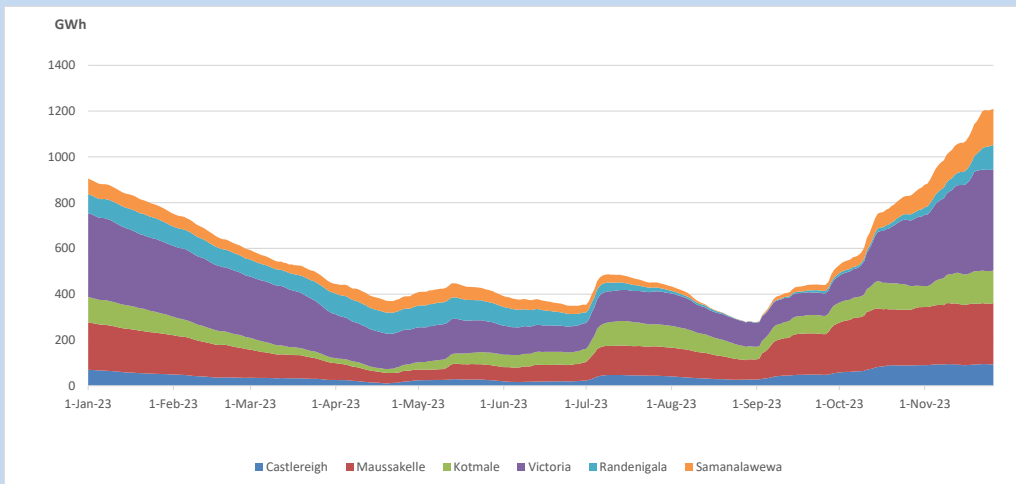


Total Reservoir Level 1209.9 GWh
 % of Total capacity 97.2%

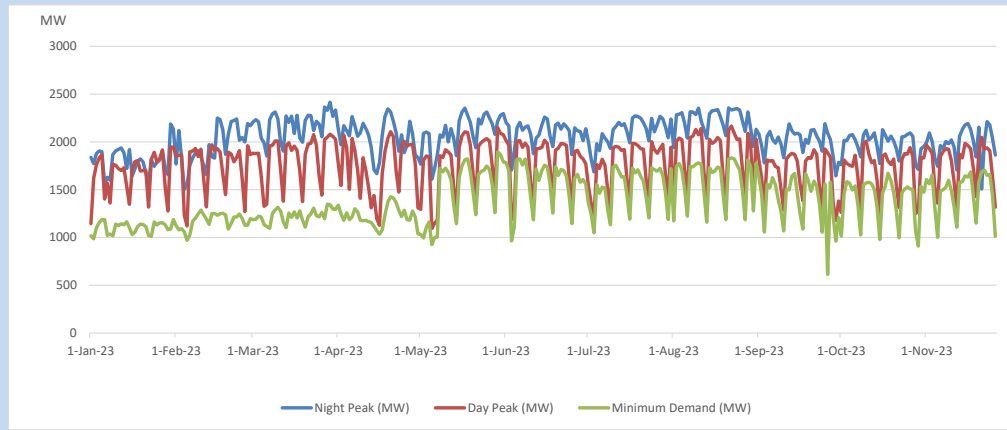
11. Comparison of Total Reservoir Storage Levels with Past Years



12. Variation of Major Hydro Reservoir Levels in the current year (GWh)



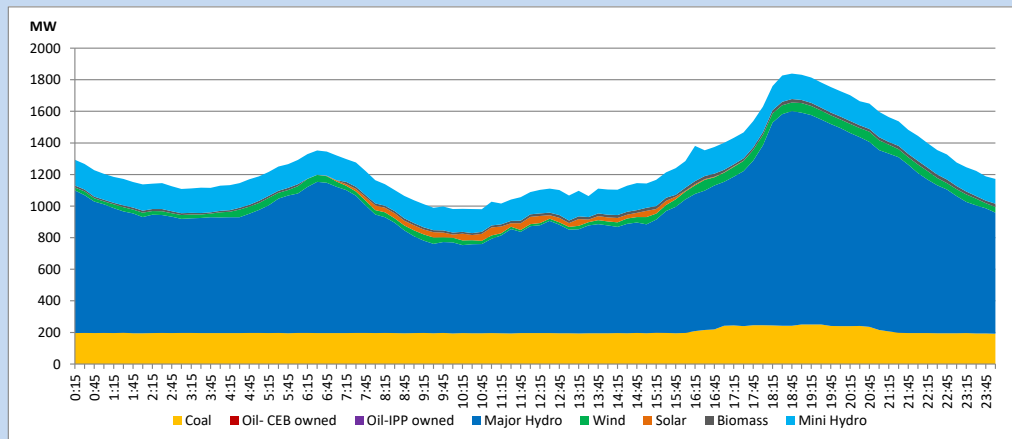
13. Variation of Demand during the current year



The above figures are excluding contribution from roof top solar, non telemetered solar and mini hydro plants

14. Daily Load Curve

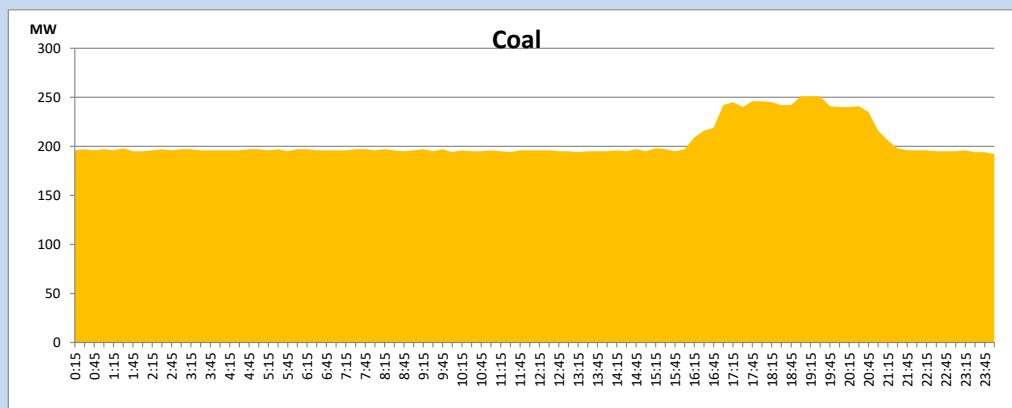
November 26, 2023



Solar and wind data is based on Telemetered Power Stations only

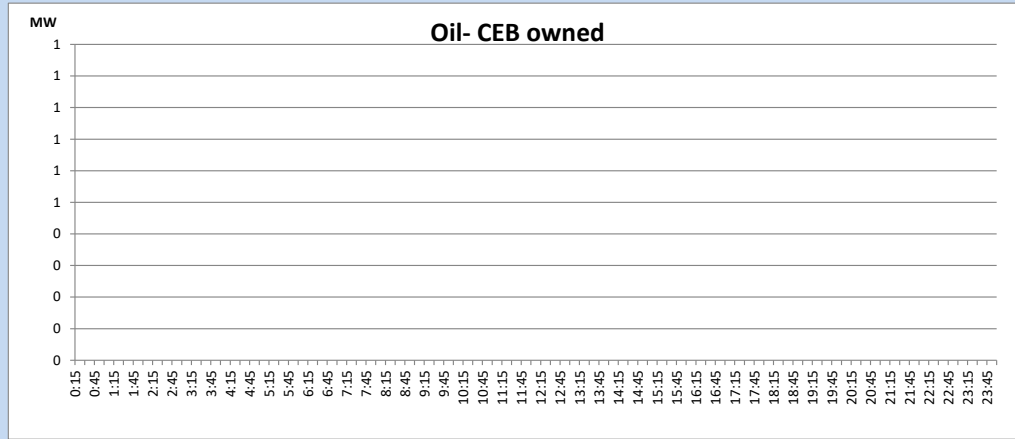
Coal Generation during

November 26, 2023



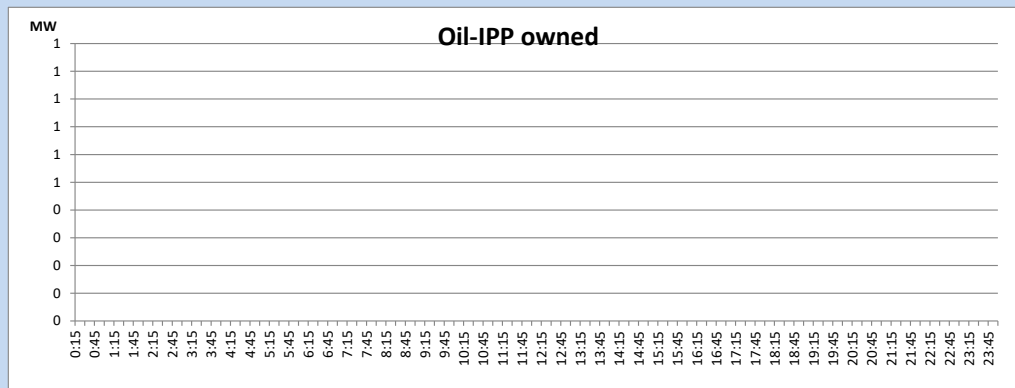
CEB Oil Plant Generation during

November 26, 2023



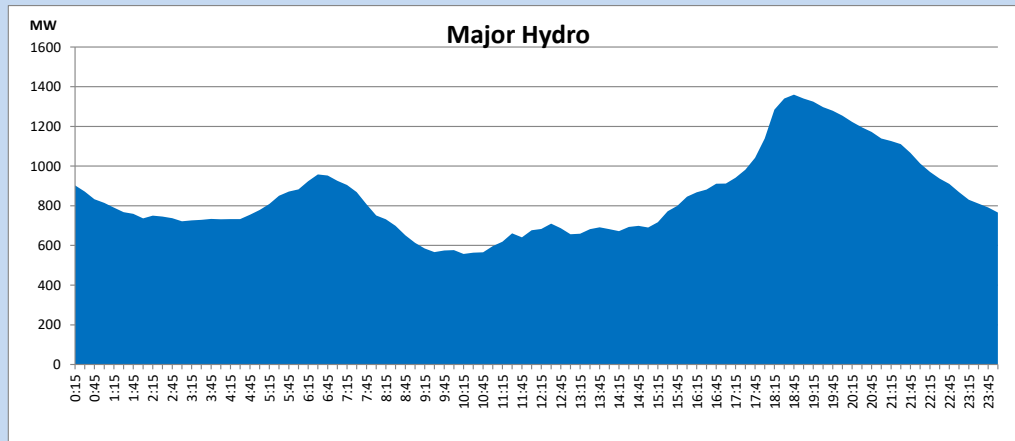
IPP Oil Plant Generation during

November 26, 2023



Major Hydro Generation during

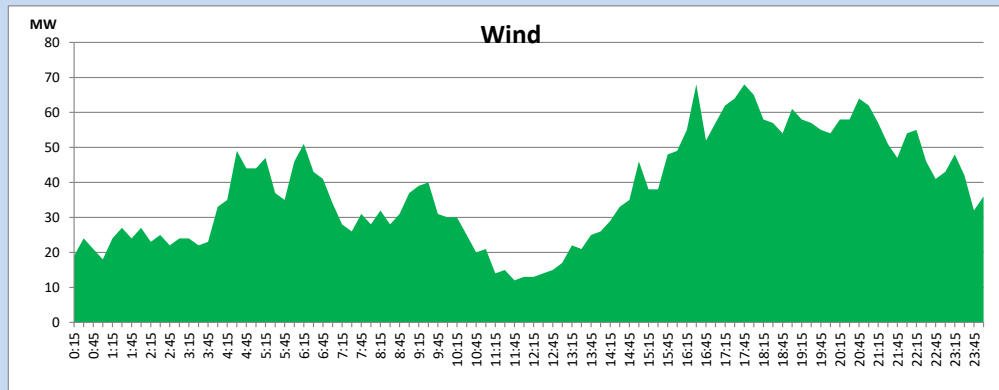
November 26, 2023



Wind Generation during

November 26, 2023

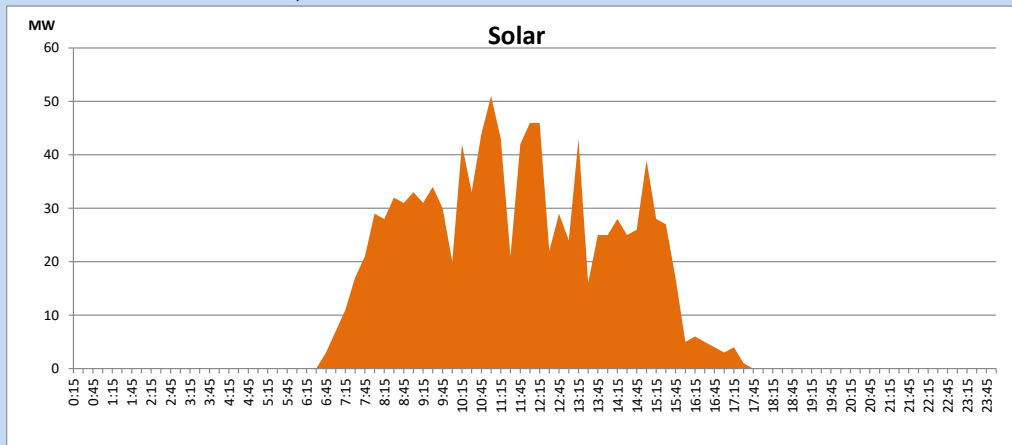
Based on Telemetered Power Stations only



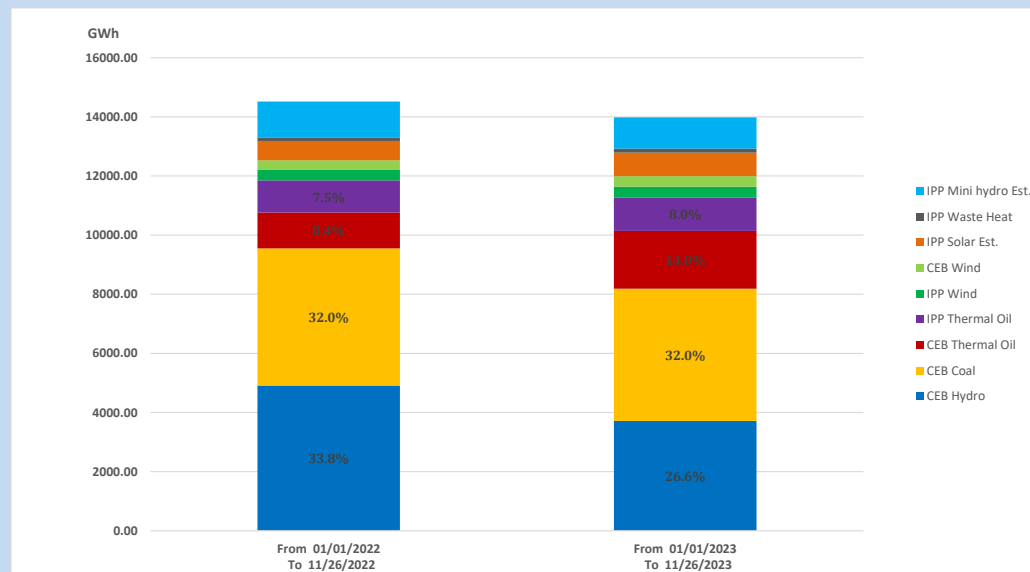
Solar Generation during

November 26, 2023

Based on Telemetered Power Stations only



15. Cumulative Dispatch Comparison with Last Year



Cumulative dispatch
 From 01/01/2022 To 11/26/2022
 From 01/01/2023 To 11/26/2023

14517 GWh
 13982 GWh

The above figures are including contribution from roof top solar, non telemetered solar and mini hydro plants (figures have been adjusted based on the data from the CEB monthly review reports.)

Thermal Plant Fuel types

Table 08

Power Station	Primary Fuel
CEB Thermal	
Sapugaskanda 1	Heavy Fuel
Sapugaskanda 2	Heavy Fuel
Kelanitissa Small Gas Turbines	Auto Diesel
GT 7 - Kelanitissa	Auto Diesel
Kelanitissa CCY	Naphtha or Diesel
Lakvijaya 1	Coal
Lakvijaya 2	Coal
Lakvijaya 3	Coal
Uthuru Janani	Heavy Fuel
Barge CEB	Heavy Fuel
KCCPS -2	Auto Diesel

Power Station	Primary Fuel
Private Thermal	
West Coast	Auto Diesel / Heavy Fuel
ACE Matara	Heavy Fuel
ACE Embilipitiya	Heavy Fuel

Major Incidents reported during the day

November 26, 2023

1) Nil.