

Generation and Reservoirs Statistics

November 25, 2023



PUBLIC UTILITIES COMMISSION OF SRI LANKA

1. Daily Generation Mix in MWh

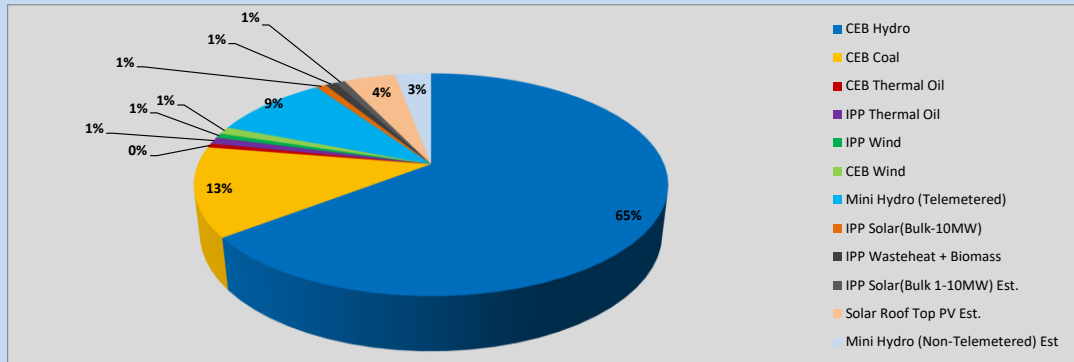


Table 01

	Generation (MWh)
CEB Hydro	25,296
CEB Coal	5,080
CEB Thermal Oil	232
IPP Thermal Oil	391
IPP Wind	259
CEB Wind	426
Mini Hydro (Telemetered)	3,714
IPP Solar (Bulk)	317
IPP Waste heat + Biomass	341
Total Generation (Excluding estimated figures)	36,056
* Estimated unserved energy	0
* Estimated Mini Hydro (Non telemetered)	1156
* Estimated IPP Solar PV (Bulk 1-10MW)	304
* Estimated Solar Roof Top PV	1640
Total Generation (Including estimated figures)	39,156

* Estimated figures of CEB generation report

Table 02

	Installed Capacity (MW)
CEB Hydro	1409
CEB Coal	810
CEB Thermal Oil	781
IPP Thermal Oil (West Coast, ACE Matara and ACE Embilipitiya)	387
IPP Wind	148
CEB Wind	100
Mini Hydro	422
IPP Waste heat + Biomass	50
IPP Solar	136
Rooftop Solar (Ordinary)	277
Rooftop Solar (LT Bulk)	263
Rooftop Solar (HT Bulk)	70

Data Source - Monthly Review Report [Aug-2023]

2. Cumulative Dispatch

Following data excludes the contribution from roof top solar, non telemetered solar and mini hydro plants

Table 03 - Current Month

Category	Dispatch (GWh)	
CEB Hydro	594	58.72%
CEB Coal	202	19.97%
CEB Thermal Oil	8	0.84%
IPP Thermal	9	0.88%
SPP Wind	6	0.62%
CEB Wind	8	0.78%
Mini Hydro *	122	12.04%
IPP Solar *	55	5.41%
IPP Waste heat + BMP	7	0.71%
Total	1,011	

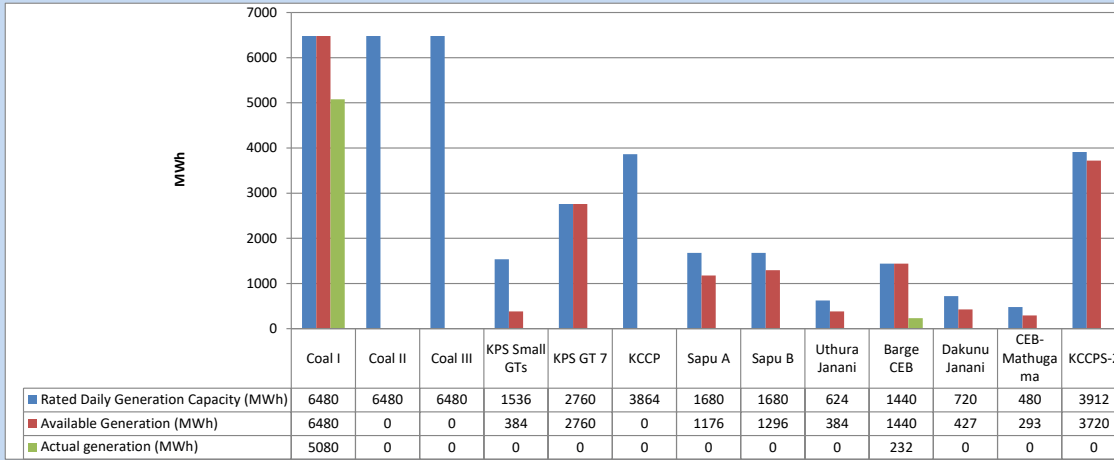
Table 04 - Current Year

Category	Dispatch (GWh)	
CEB Hydro	3,696	26.50%
CEB Coal	4,467	32.03%
CEB Thermal Oil	1,953	14.00%
IPP Thermal	1,123	8.05%
SPP Wind	371	2.66%
CEB Wind	360	2.58%
Mini Hydro *	1,048	7.52%
IPP Solar *	792	5.68%
IPP Waste heat	138	0.99%
Total	13,948	

*Including estimated contribution from non telemetered plants

3. CEB owned Thermal Plant Dispatch

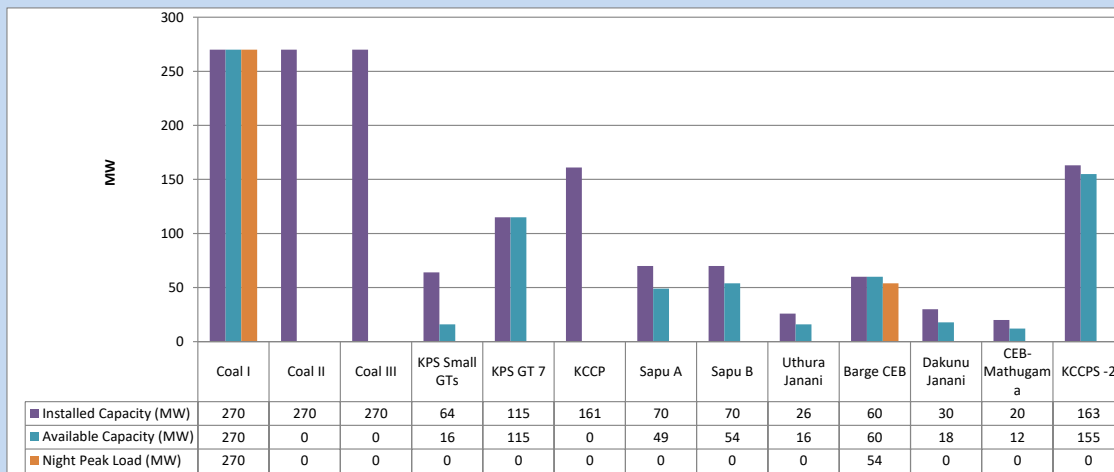
November 25, 2023



Available Generation is estimated based on plant availability at 6.00am on

November 26, 2023

4. CEB owned Thermal Plant Loading at the Night Peak

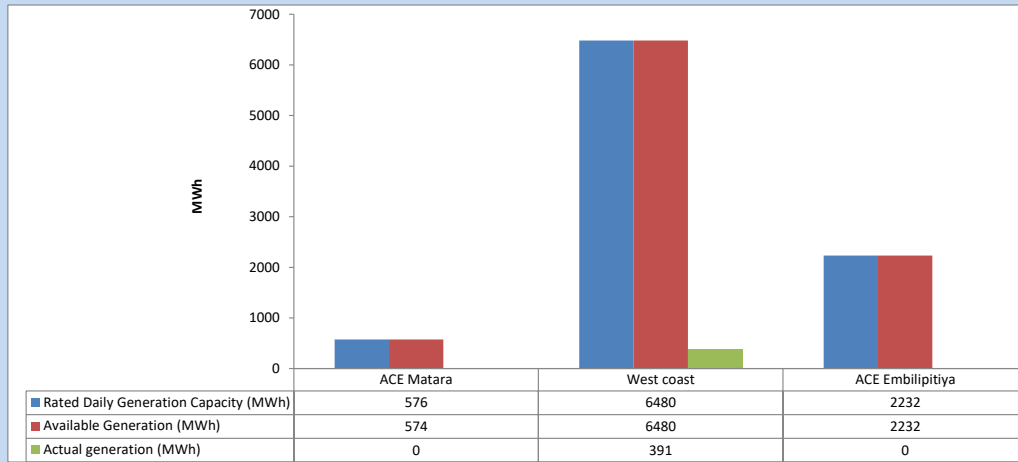


Plant availability is recorded at 6.00 am on

November 26, 2023

5. IPP owned Thermal Plant Dispatch

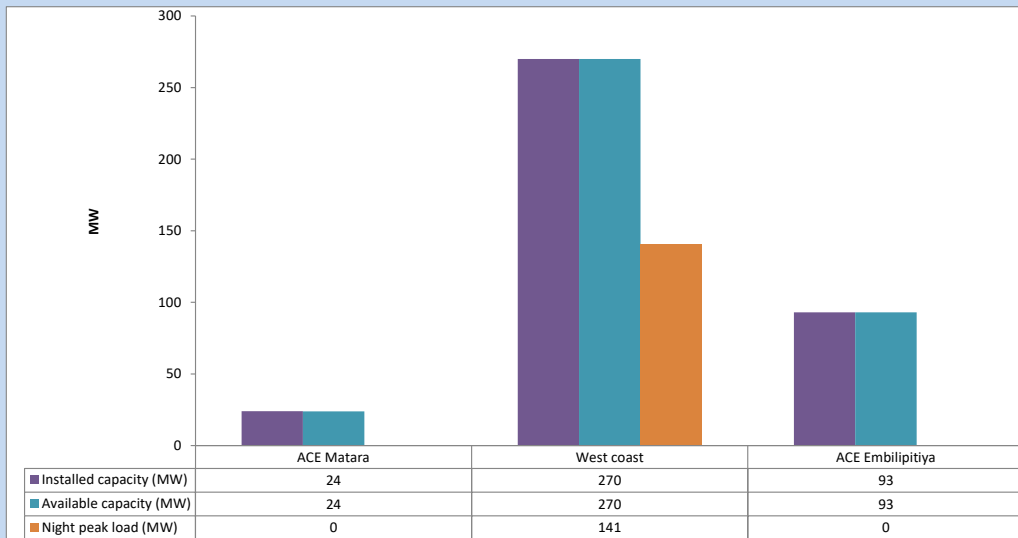
November 25, 2023



Available Generation is estimated based on plant availability at 6.00am on

November 26, 2023

6. IPP owned Thermal Plant Loading at the Night Peak

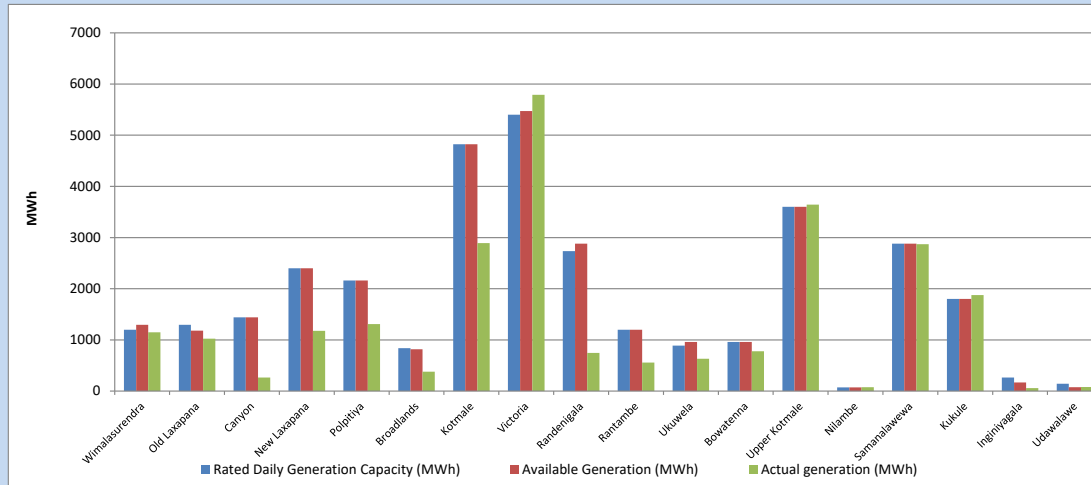


Plant availability is recorded at 6.00 am on

November 26, 2023

7. Major Hydro Plant Dispatch

November 25, 2023

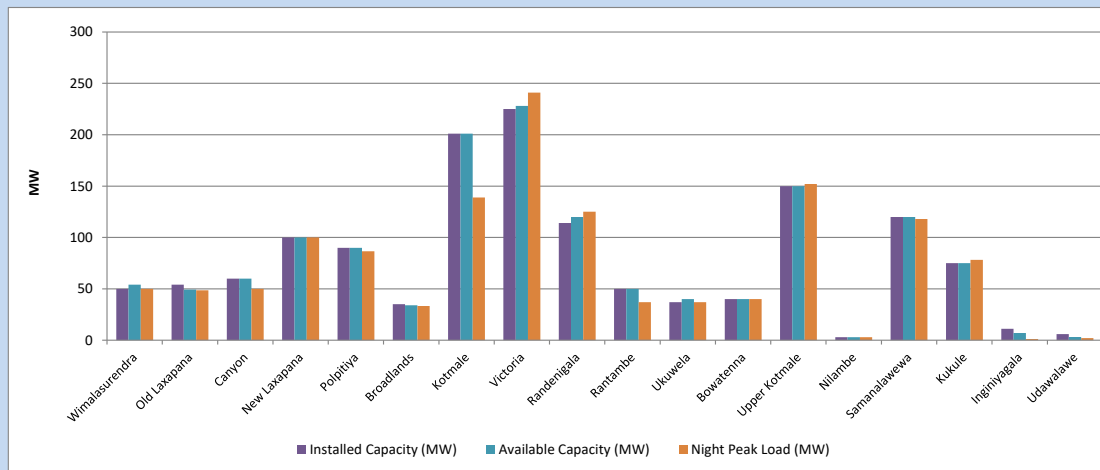


Available Generation is estimated based on plant availability at 6.00am on November 26, 2023
Broadlands power plant is operating in the Commissioning Stage

November 26, 2023

8. Major Hydro Plant Loading at Night Peak

November 25, 2023



Plant availability is recorded at 6.00 am on November 26, 2023
Broadlands power plant is operating in the Commissioning Stage

November 26, 2023

9. Summary of Major Plant performance

Table 05

Plant	Installed Capacity (MW)	Plant Availability (MW)	Night peak Load (MW)	Plant Dispatch (MWh)
Wimalasurendra	50	54	50	1,147
Old Laxapana Canyon	54	49	49	1,025
New Laxapana	60	60	50	266
Polpitiya	100	100	100	1,178
Broadlands	90	90	87	1,310
Kotmale	35	34	33	378
Victoria	201	201	139	2,890
Randenigala	225	228	241	5,788
Rantambe	114	120	125	746
Ukuwela	50	50	37	558
Bowatenna	37	40	37	632
Upper Kotmale	40	40	40	778
Nilambe	150	150	152	3,642
Samanalawewa	3	3	3	75
Kukule	120	120	118	2,870
Inginiyagala	75	75	78	1,876
Udawalawe	11	7	1	59
Puttalam Coal I	6	3	2	78
Puttalam Coal II	270	270	270	5,080
Puttalam Coal III	270	0	0	0
KPS Small GTs	270	0	0	0
KPS GT 7	64	16	0	0
KCCP	115	115	0	0
Sapugaskanda A	161	0	0	0
Sapugaskanda B	70	49	0	0
Uthura Janani	70	54	0	0
Barge CEB	26	16	0	0
CEB-Hambantota	60	60	54	232
CEB-Mathugama	30	18	0	0
ACE Matara	20	12	0	0
Asia Power	24	24	0	0
KCCPS -2	50	0	0	0
West Coast	163	155	0	0
Nothern Power	270	270	141	391
ACE Embilipitiya	36	0	0	0
Total	93	93	0	0
Total	3,483	2,576	2,020	36,056

Plant availability is the availability recorded at 6 am on

November 26, 2023

10. Contribution to the Night Peak in MW

November 25, 2023

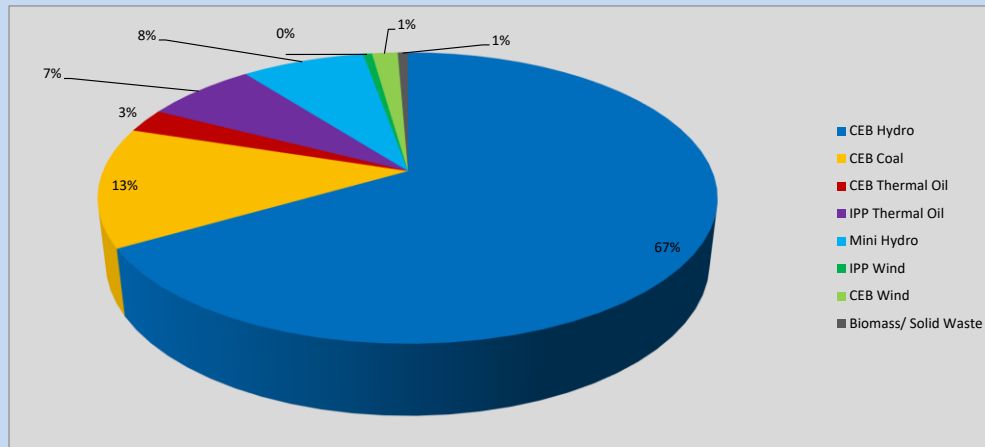


Table 06

CEB Hydro	1355	MW
CEB Coal	270	MW
CEB Thermal Oil	54	MW
IPP Thermal Oil	141	MW
Mini Hydro (Telemetered)	156	MW
IPP Wind	11.3	MW
CEB Wind	32.6	MW
Biomass/ Solid Waste	13	MW

Recorded Peak Demand Data

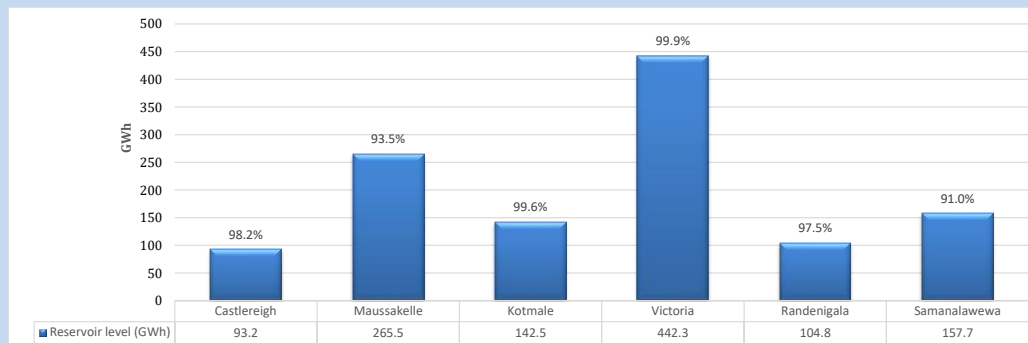
Table 07

Night Peak*	2,034	MW
Day Peak Maximum Demand	1,635	MW
Day Peak Minimum Demand	1,443	MW
Off Peak Minimum Demand	1,175	MW

Above figures are excluding contribution from roof top solar, non telemetered solar and mini hydro plants

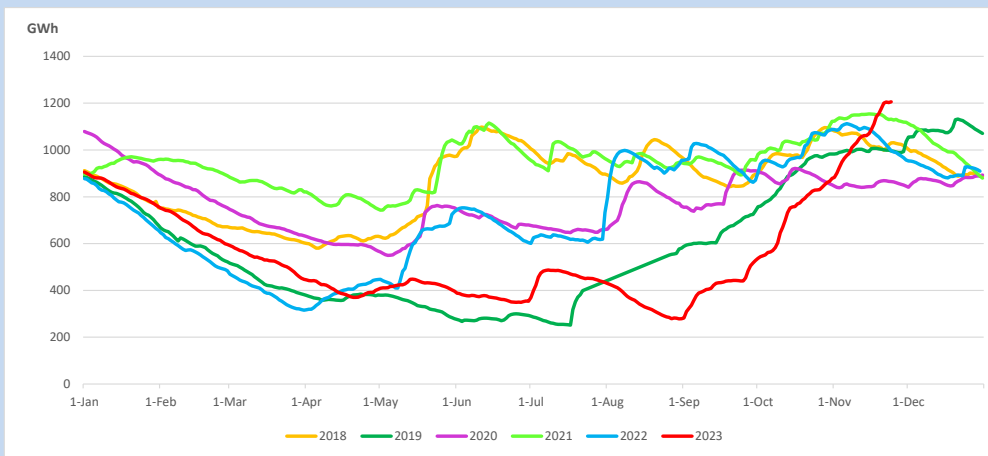
Reservoir Levels -

as at 06.00 Hr on November 26, 2023

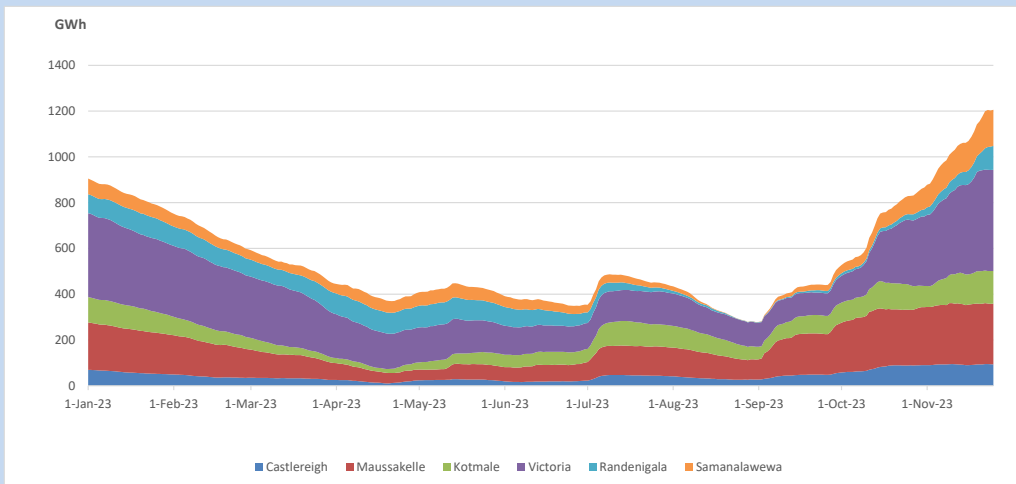


Total Reservoir Level 1206 GWh
 % of Total capacity 96.8%

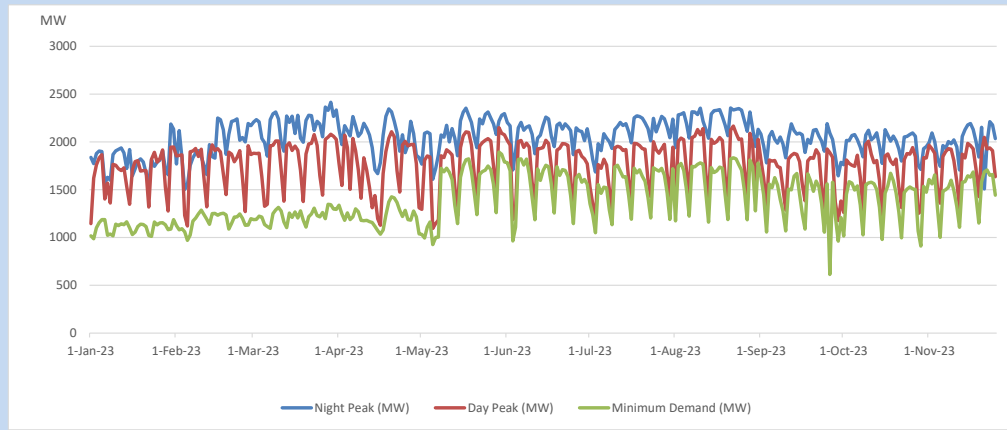
11. Comparison of Total Reservoir Storage Levels with Past Years



12. Variation of Major Hydro Reservoir Levels in the current year (GWh)



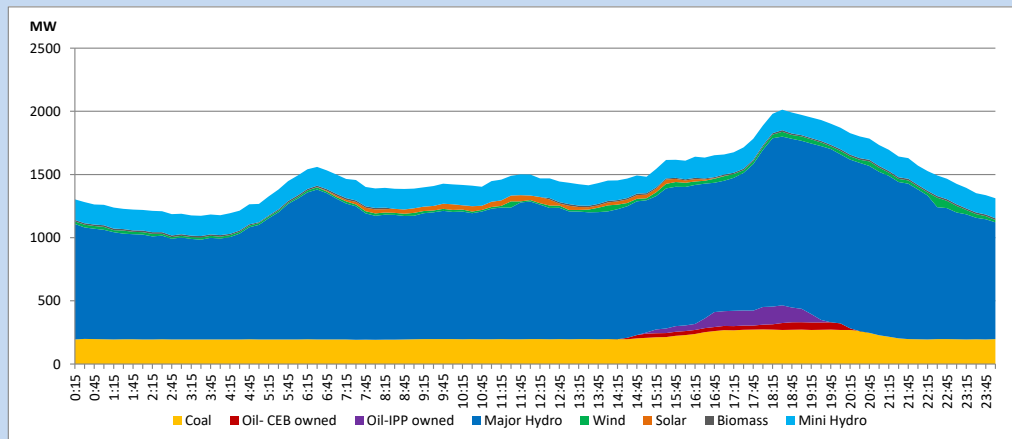
13. Variation of Demand during the current year



The above figures are excluding contribution from roof top solar, non telemetered solar and mini hydro plants

14. Daily Load Curve

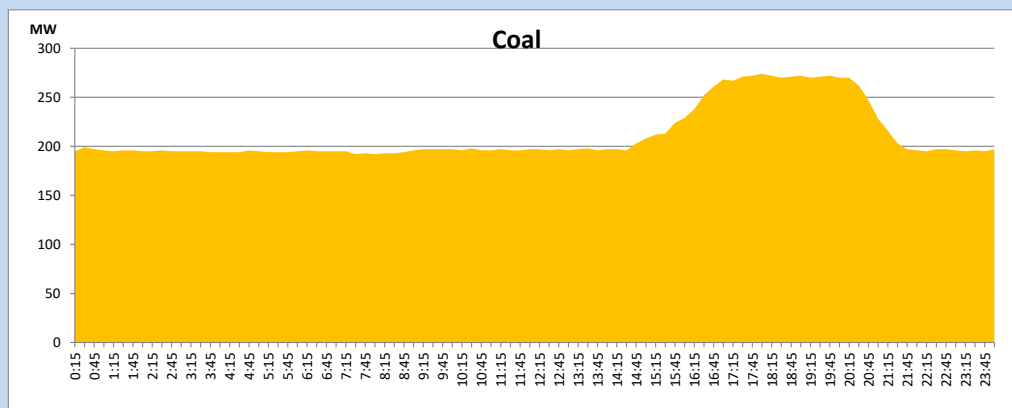
November 25, 2023



Solar and wind data is based on Telemetered Power Stations only

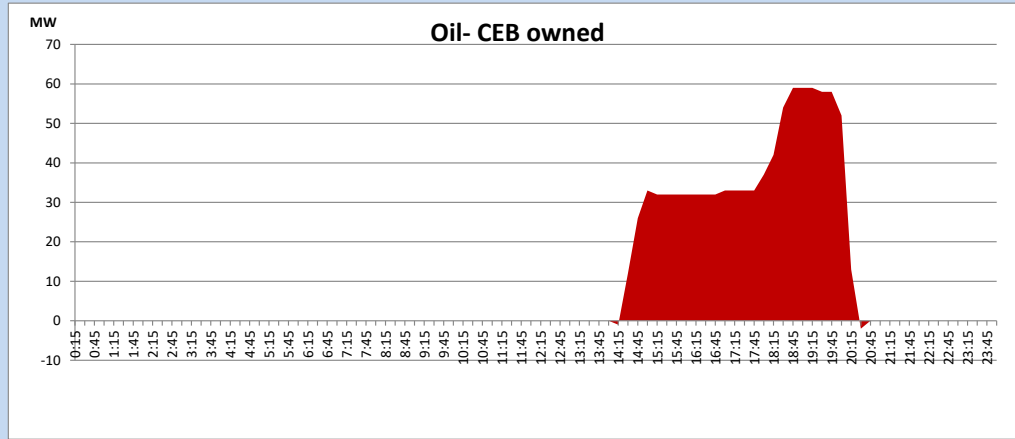
Coal Generation during

November 25, 2023



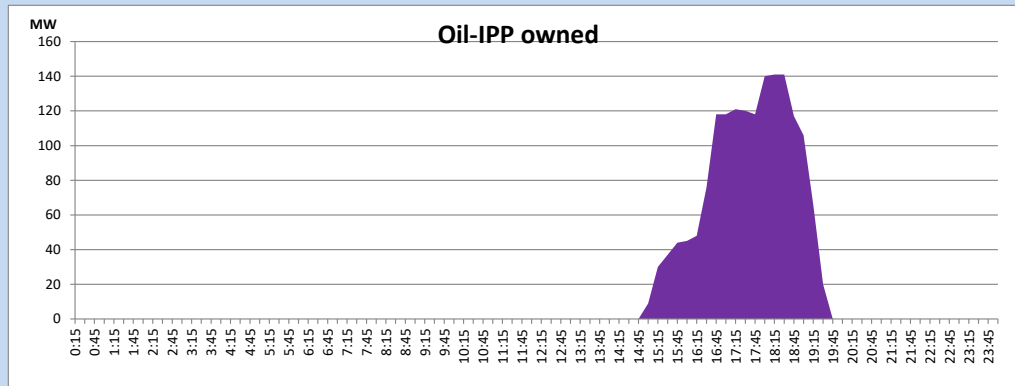
CEB Oil Plant Generation during

November 25, 2023



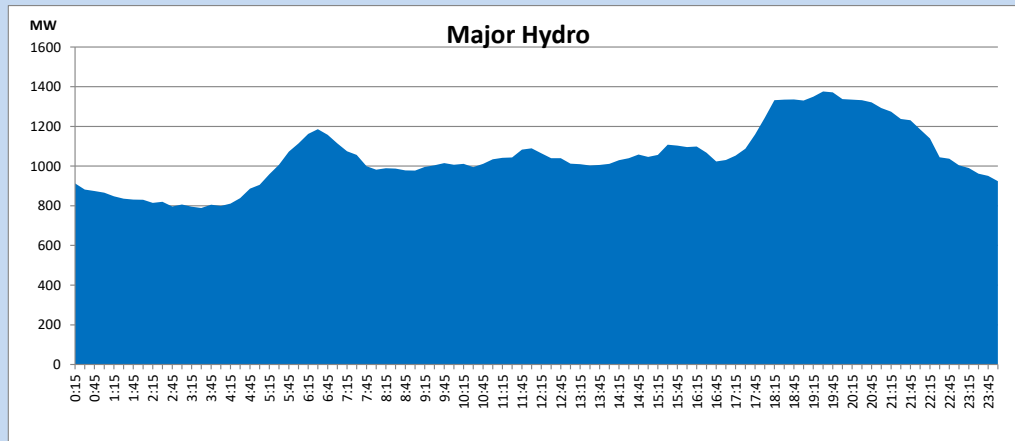
IPP Oil Plant Generation during

November 25, 2023



Major Hydro Generation during

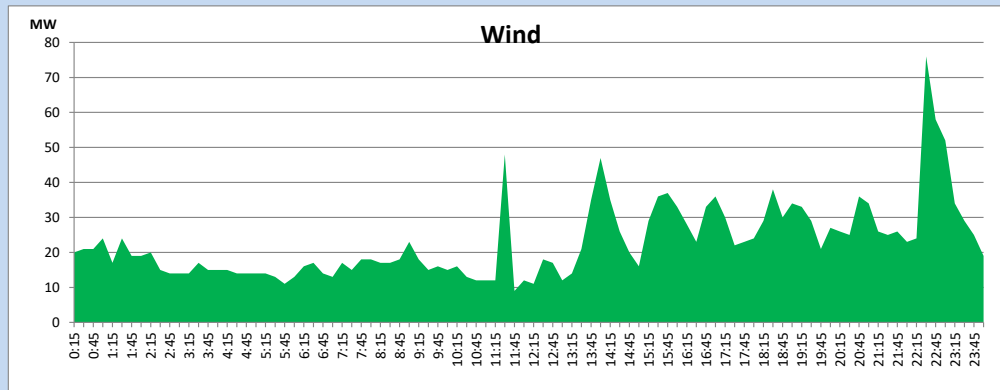
November 25, 2023



Wind Generation during

November 25, 2023

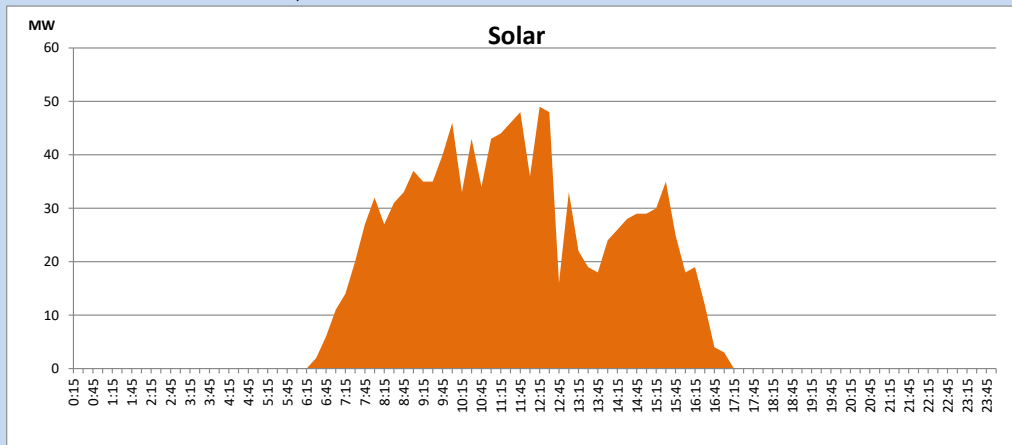
Based on Telemetered Power Stations only



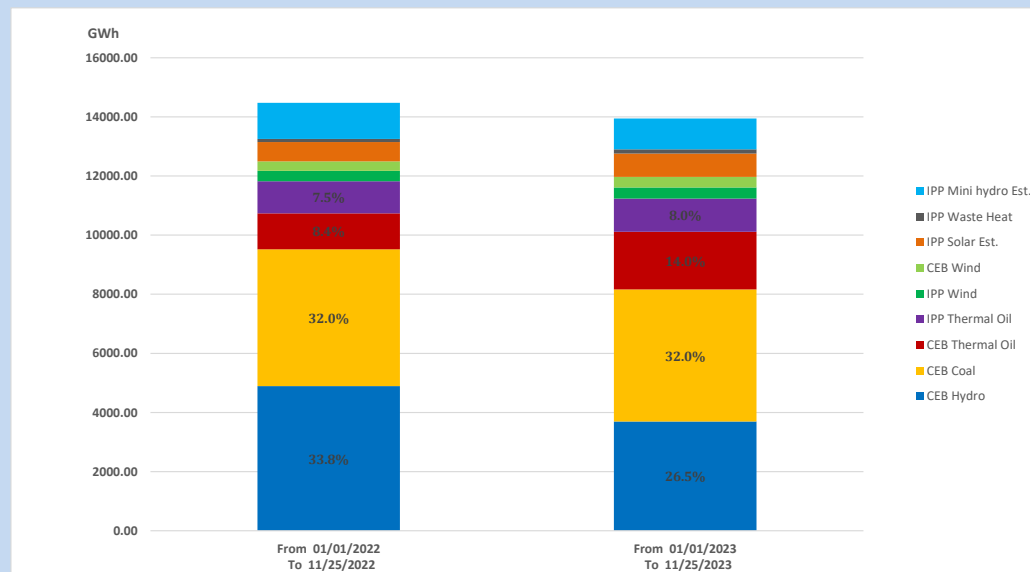
Solar Generation during

November 25, 2023

Based on Telemetered Power Stations only



15. Cumulative Dispatch Comparison with Last Year



Cumulative dispatch
 From 01/01/2022 To 11/25/2022
 From 01/01/2023 To 11/25/2023

14477 GWh
 13948 GWh

The above figures are including contribution from roof top solar, non telemetered solar and mini hydro plants (figures have been adjusted based on the data from the CEB monthly review reports.)

Thermal Plant Fuel types

Table 08

Power Station	Primary Fuel
CEB Thermal	
Sapugaskanda 1	Heavy Fuel
Sapugaskanda 2	Heavy Fuel
Kelanitissa Small Gas Turbines	Auto Diesel
GT 7 - Kelanitissa	Auto Diesel
Kelanitissa CCY	Naphtha or Diesel
Lakvijaya 1	Coal
Lakvijaya 2	Coal
Lakvijaya 3	Coal
Uthuru Janani	Heavy Fuel
Barge CEB	Heavy Fuel
KCCPS -2	Auto Diesel

Power Station	Primary Fuel
Private Thermal	
West Coast	Auto Diesel / Heavy Fuel
ACE Matara	Heavy Fuel
ACE Embilipitiya	Heavy Fuel

Major Incidents reported during the day

November 25, 2023

- 1) Upper Kothmale pond spilling stopped at 15:00hrs.
- 2) Samanawewa reservoirs spilling started at 17:14hrs and stopped at 23:10hrs.