

Generation and Reservoirs Statistics

November 24, 2023



PUBLIC UTILITIES COMMISSION OF SRI LANKA

1. Daily Generation Mix in MWh

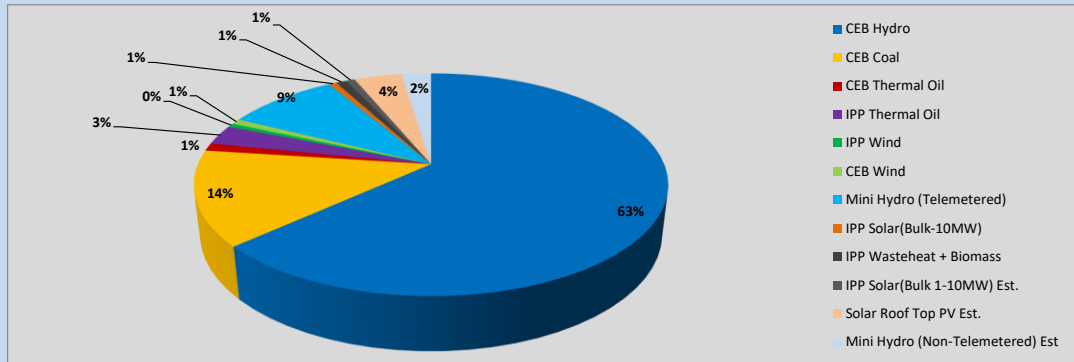


Table 01

	Generation (MWh)
CEB Hydro	26,755
CEB Coal	5,829
CEB Thermal Oil	477
IPP Thermal Oil	1,213
IPP Wind	233
CEB Wind	337
Mini Hydro (Telemetered)	3,851
IPP Solar (Bulk)	261
IPP Waste heat + Biomass	361
Total Generation (Excluding estimated figures)	39,317
* Estimated unserved energy	0
* Estimated Mini Hydro (Non telemetered)	1019
* Estimated IPP Solar PV (Bulk 1-10MW)	304
* Estimated Solar Roof Top PV	1640
Total Generation (Including estimated figures)	42,280

* Estimated figures of CEB generation report

Table 02

	Installed Capacity (MW)
CEB Hydro	1409
CEB Coal	810
CEB Thermal Oil	781
IPP Thermal Oil (West Coast, ACE Matara and ACE Embilipitiya)	387
IPP Wind	148
CEB Wind	100
Mini Hydro	422
IPP Waste heat + Biomass	50
IPP Solar	136
Rooftop Solar (Ordinary)	277
Rooftop Solar (LT Bulk)	263
Rooftop Solar (HT Bulk)	70

Data Source - Monthly Review Report [Aug-2023]

2. Cumulative Dispatch

Following data excludes the contribution from roof top solar, non telemetered solar and mini hydro plants

Table 03 - Current Month

Category	Dispatch (GWh)	
CEB Hydro	568	58.48%
CEB Coal	197	20.25%
CEB Thermal Oil	8	0.85%
IPP Thermal	9	0.88%
SPP Wind	6	0.61%
CEB Wind	7	0.77%
Mini Hydro *	117	12.03%
IPP Solar *	52	5.40%
IPP Waste heat + BMP	7	0.74%
Total	972	

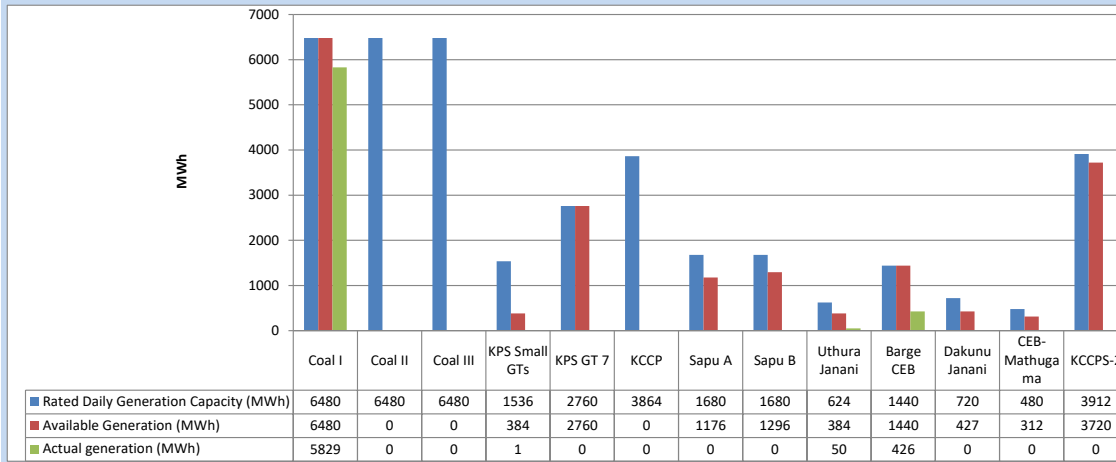
Table 04 - Current Year

Category	Dispatch (GWh)	
CEB Hydro	3,670	26.39%
CEB Coal	4,462	32.08%
CEB Thermal Oil	1,953	14.04%
IPP Thermal	1,122	8.07%
SPP Wind	371	2.66%
CEB Wind	360	2.59%
Mini Hydro *	1,043	7.50%
IPP Solar *	790	5.68%
IPP Waste heat	138	0.99%
Total	13,909	

*Including estimated contribution from non telemetered plants

3. CEB owned Thermal Plant Dispatch

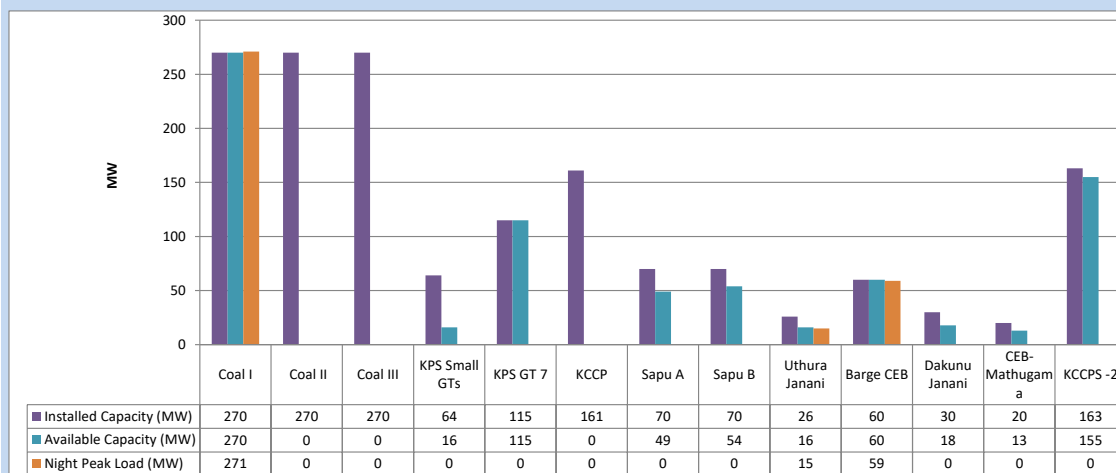
November 24, 2023



Available Generation is estimated based on plant availability at 6.00am on

November 25, 2023

4. CEB owned Thermal Plant Loading at the Night Peak

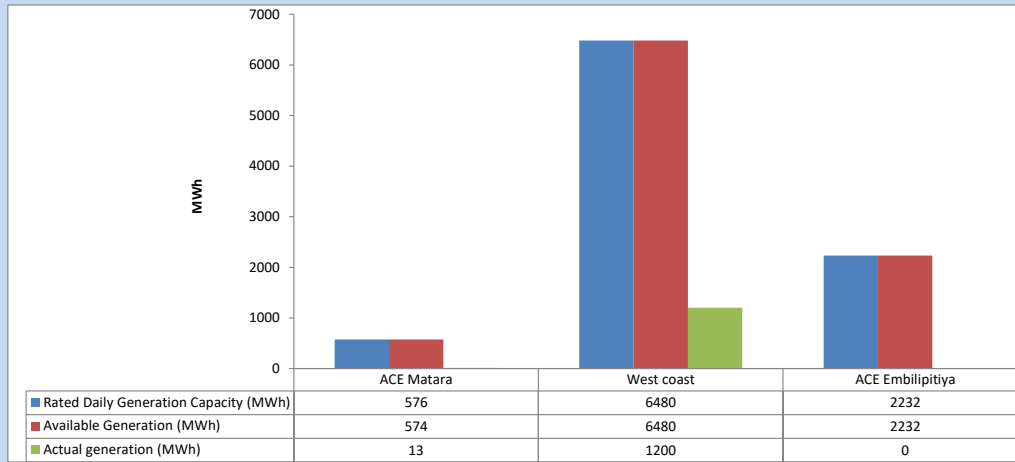


Plant availability is recorded at 6.00 am on

November 25, 2023

5. IPP owned Thermal Plant Dispatch

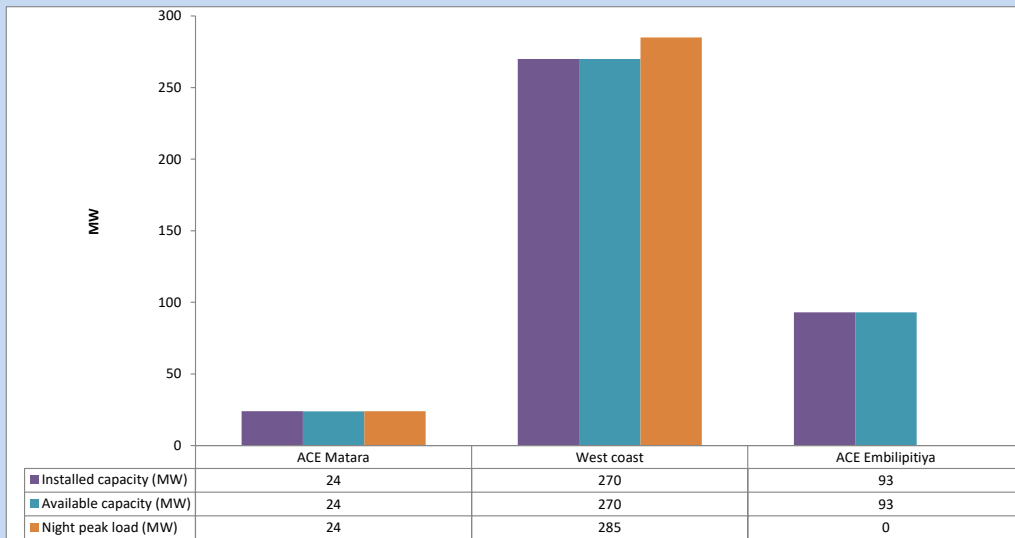
November 24, 2023



Available Generation is estimated based on plant availability at 6.00am on

November 25, 2023

6. IPP owned Thermal Plant Loading at the Night Peak

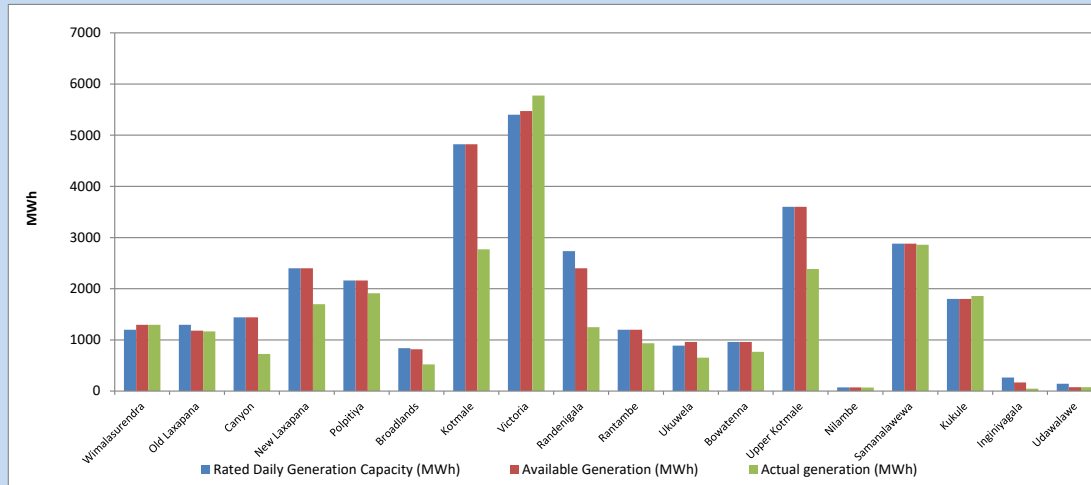


Plant availability is recorded at 6.00 am on

November 25, 2023

7. Major Hydro Plant Dispatch

November 24, 2023

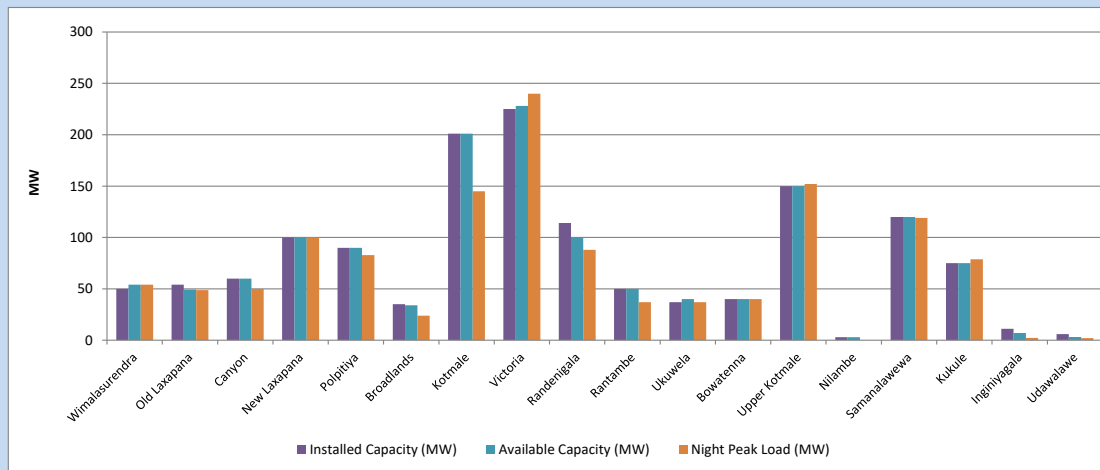


Available Generation is estimated based on plant availability at 6.00am on November 25, 2023
Broadlands power plant is operating in the Commissioning Stage

November 25, 2023

8. Major Hydro Plant Loading at Night Peak

November 24, 2023



Plant availability is recorded at 6.00 am on November 25, 2023
Broadlands power plant is operating in the Commissioning Stage

November 25, 2023

9. Summary of Major Plant performance

Table 05

Plant	Installed Capacity (MW)	Plant Availability (MW)	Night peak Load (MW)	Plant Dispatch (MWh)
Wimalasurendra	50	54	54	1,296
Old Laxapana	54	49	49	1,167
Canyon	60	60	50	726
New Laxapana	100	100	100	1,696
Polpitiya	90	90	83	1,910
Broadlands	35	34	24	520
Kotmale	201	201	145	2,770
Victoria	225	228	240	5,774
Randenigala	114	100	88	1,249
Rantambe	50	50	37	934
Ukuwela	37	40	37	654
Bowatenna	40	40	40	768
Upper Kotmale	150	150	152	2,386
Nilambe	3	3	0	67
Samanalawewa	120	120	119	2,859
Kukule	75	75	79	1,859
Inginiyagala	11	7	2	46
Udawalawe	6	3	2	75
Puttalam Coal I	270	270	271	5,829
Puttalam Coal II	270	0	0	0
Puttalam Coal III	270	0	0	0
KPS Small GTs	64	16	0	1
KPS GT 7	115	115	0	0
KCCP	161	0	0	0
Sapugaskanda A	70	49	0	0
Sapugaskanda B	70	54	0	0
Uthura Janani	26	16	15	50
Barge CEB	60	60	59	426
CEB-Hambantota	30	18	0	0
CEB-Mathugama	20	13	0	0
ACE Matara	24	24	24	13
Asia Power	50	0	0	0
KCCPS -2	163	155	0	0
West Coast	270	270	285	1,200
Nothern Power	36	0	0	0
ACE Embilipitiya	93	93	0	0
Total	3,483	2,557	2,163	39,318

Plant availability is the availability recorded at 6 am on

November 25, 2023

10. Contribution to the Night Peak in MW

November 24, 2023

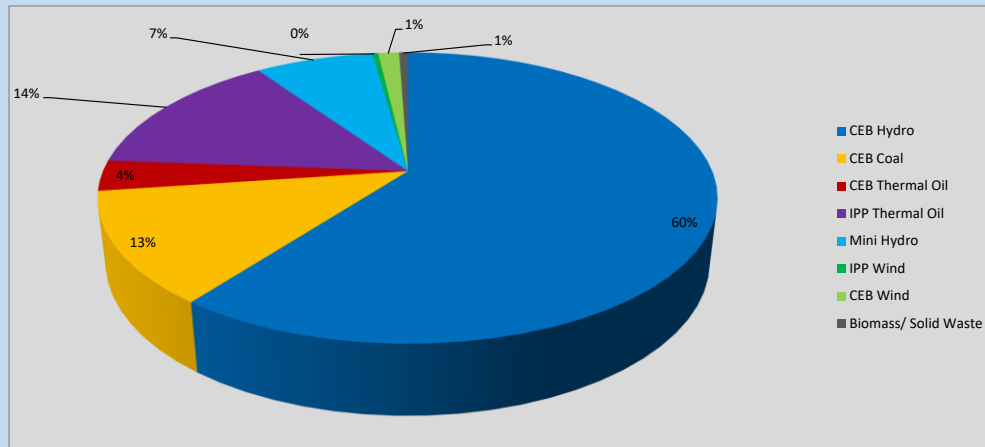


Table 06

CEB Hydro	1314	MW
CEB Coal	271	MW
CEB Thermal Oil	74	MW
IPP Thermal Oil	309	MW
Mini Hydro (Telemetered)	160	MW
IPP Wind	8.3	MW
CEB Wind	28.5	MW
Biomass/ Solid Waste	12	MW

Recorded Peak Demand Data

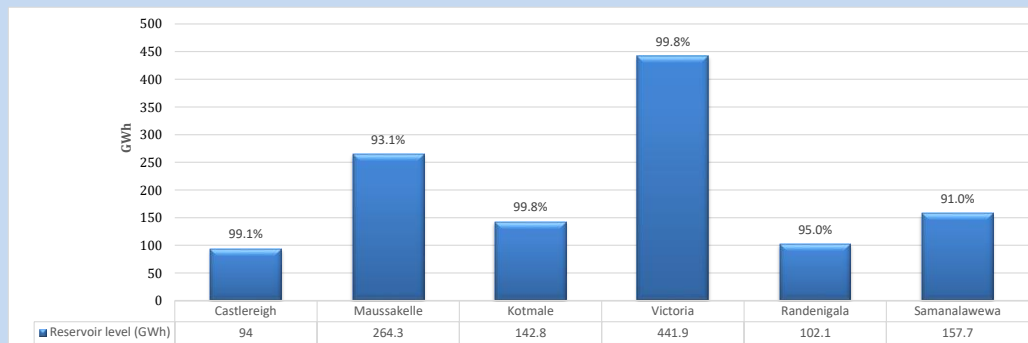
Table 07

Night Peak*	2,177	MW
Day Peak Maximum Demand	1,909	MW
Day Peak Minimum Demand	1,659	MW
Off Peak Minimum Demand	1,183	MW

Above figures are excluding contribution from roof top solar, non telemetered solar and mini hydro plants

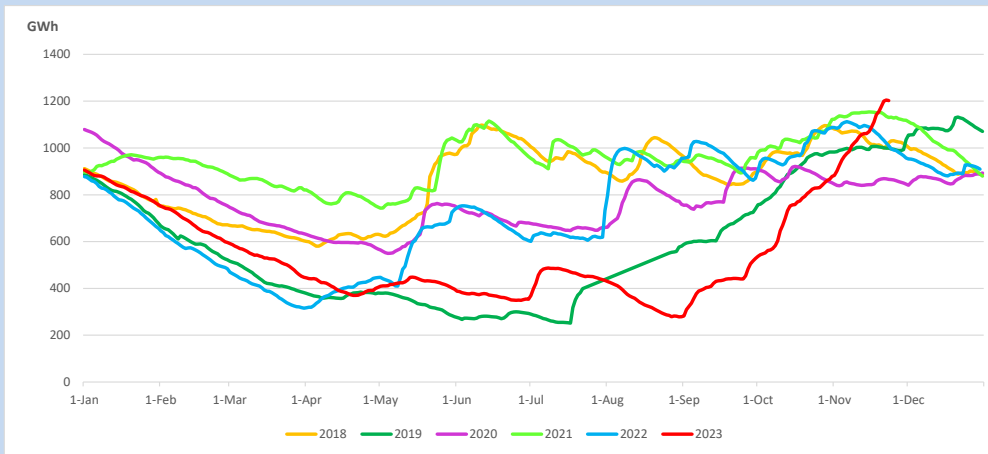
Reservoir Levels -

as at 06.00 Hr on November 25, 2023

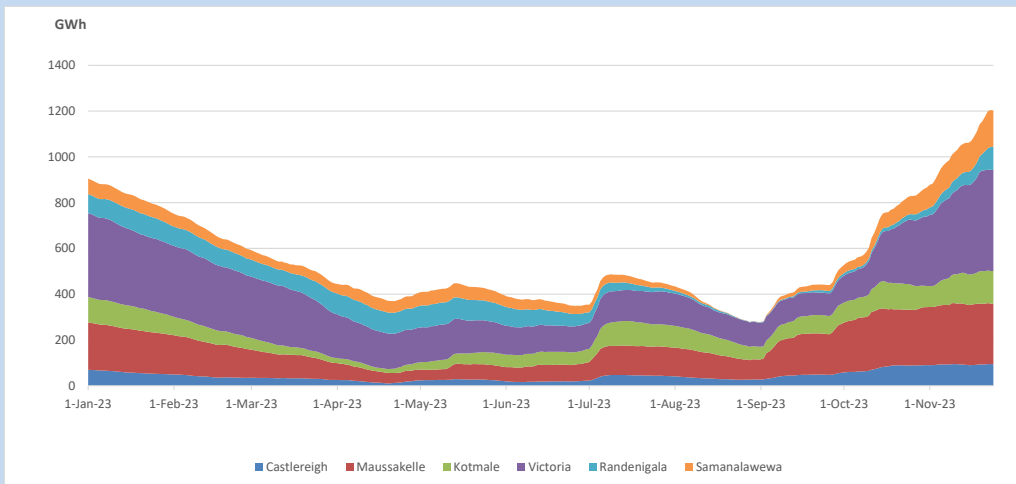


Total Reservoir Level 1202.8 GWh
 % of Total capacity 96.6%

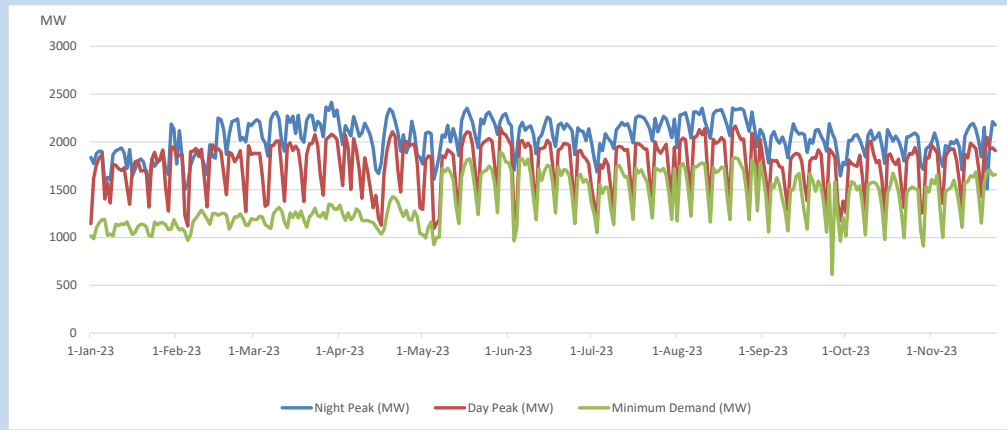
11. Comparison of Total Reservoir Storage Levels with Past Years



12. Variation of Major Hydro Reservoir Levels in the current year (GWh)



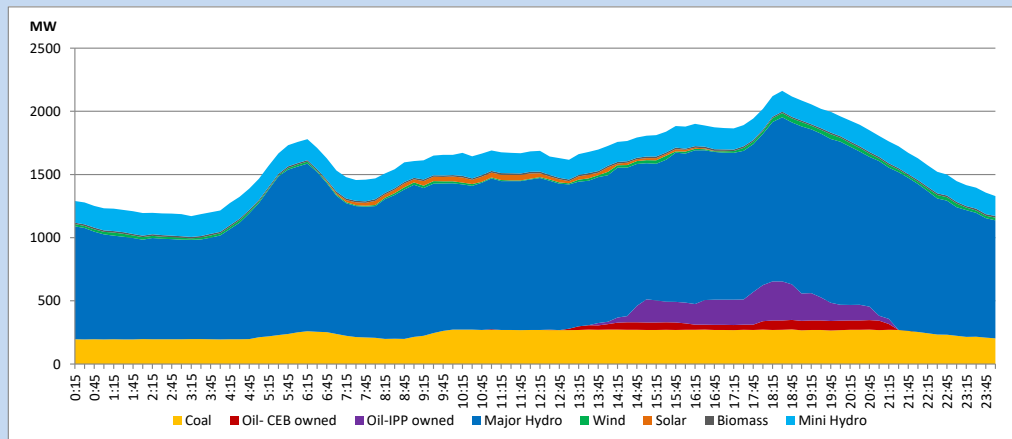
13. Variation of Demand during the current year



The above figures are excluding contribution from roof top solar, non telemetered solar and mini hydro plants

14. Daily Load Curve

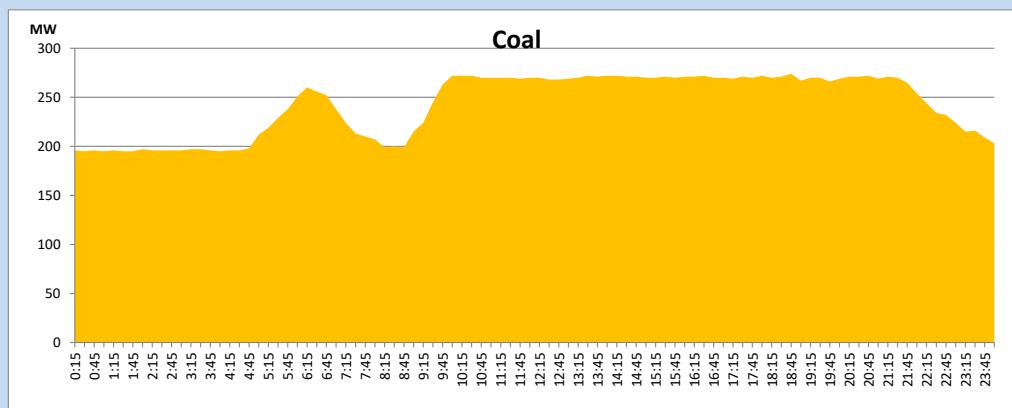
November 24, 2023



Solar and wind data is based on Telemetered Power Stations only

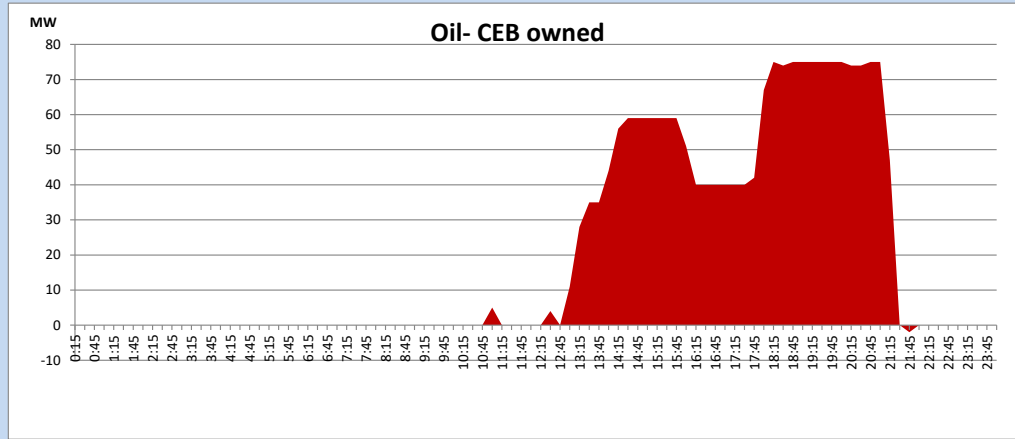
Coal Generation during

November 24, 2023



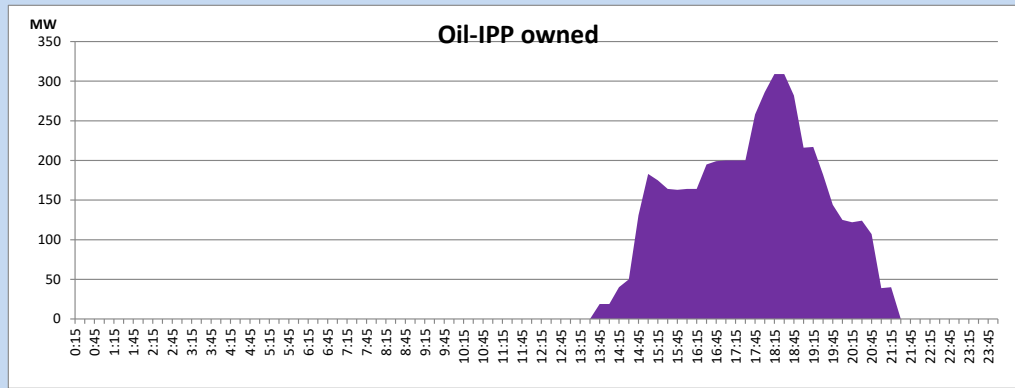
CEB Oil Plant Generation during

November 24, 2023



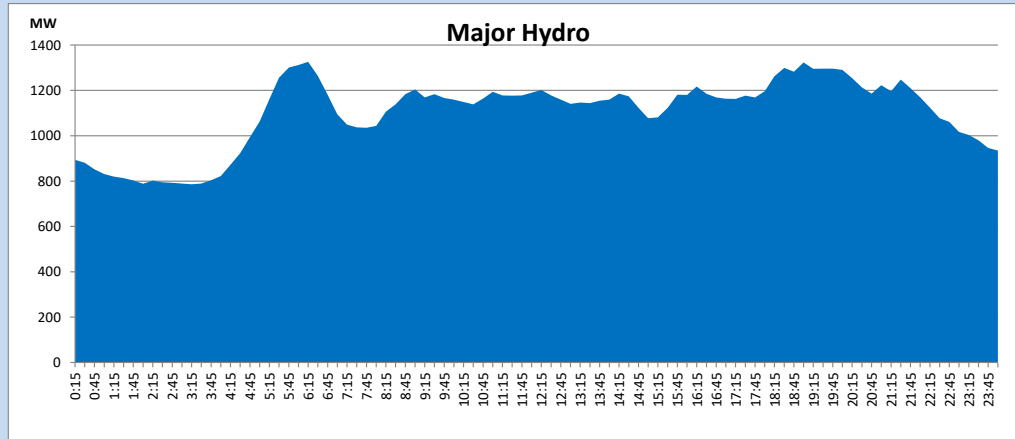
IPP Oil Plant Generation during

November 24, 2023



Major Hydro Generation during

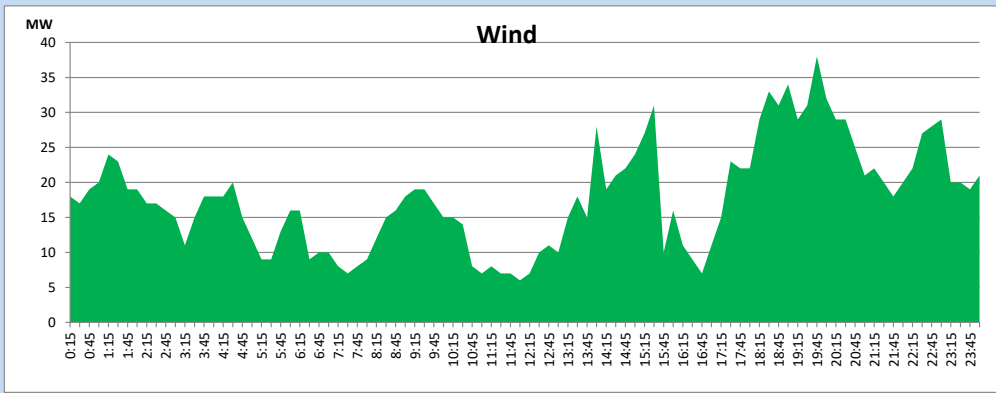
November 24, 2023



Wind Generation during

November 24, 2023

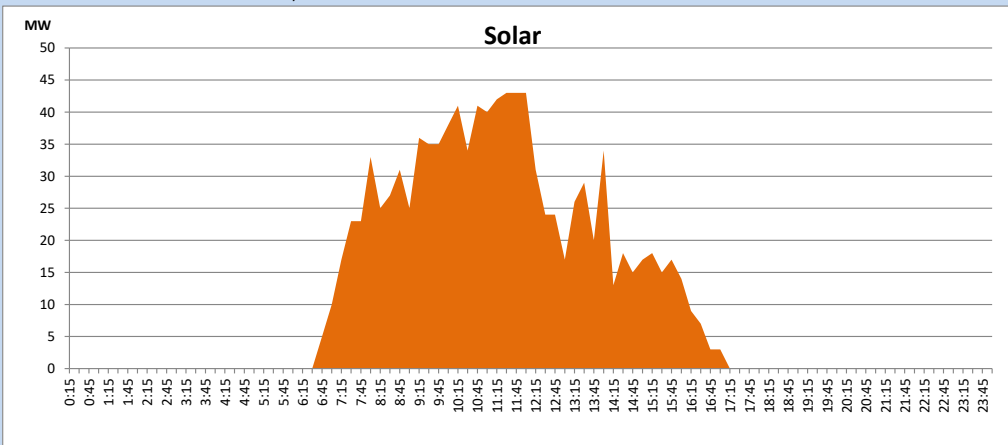
Based on Telemetered Power Stations only



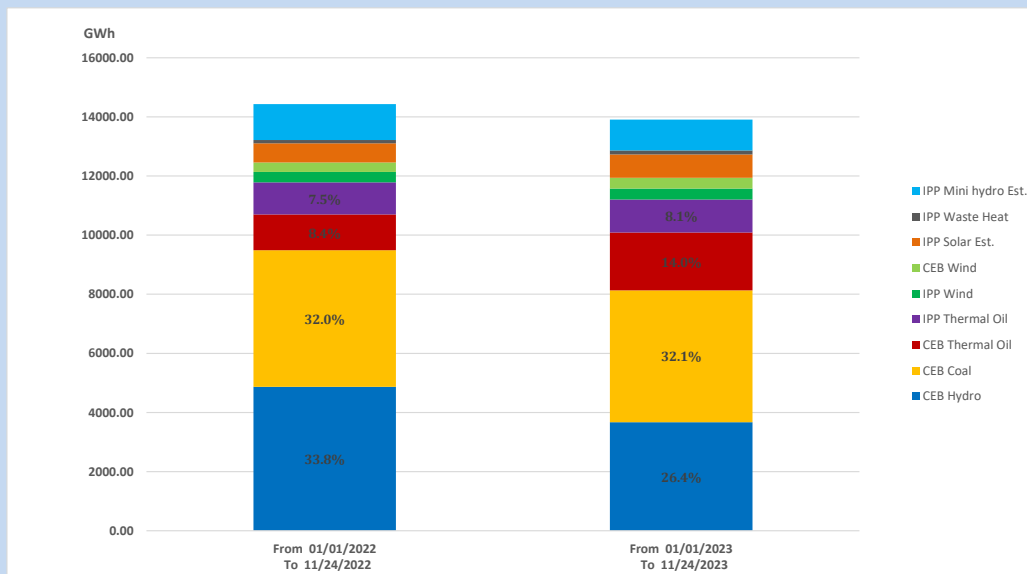
Solar Generation during

November 24, 2023

Based on Telemetered Power Stations only



15. Cumulative Dispatch Comparison with Last Year



Cumulative dispatch
 From 01/01/2022 To 11/24/2022
 From 01/01/2023 To 11/24/2023

14432 GWh
 13909 GWh

The above figures are including contribution from roof top solar, non telemetered solar and mini hydro plants (figures have been adjusted based on the data from the CEB monthly review reports.)

Thermal Plant Fuel types

Table 08

Power Station	Primary Fuel
CEB Thermal	
Sapugaskanda 1	Heavy Fuel
Sapugaskanda 2	Heavy Fuel
Kelanitissa Small Gas Turbines	Auto Diesel
GT 7 - Kelanitissa	Auto Diesel
Kelanitissa CCY	Naphtha or Diesel
Lakvijaya 1	Coal
Lakvijaya 2	Coal
Lakvijaya 3	Coal
Uthuru Janani	Heavy Fuel
Barge CEB	Heavy Fuel
KCCPS -2	Auto Diesel

Power Station	Primary Fuel
Private Thermal	
West Coast	Auto Diesel / Heavy Fuel
ACE Matara	Heavy Fuel
ACE Embilipitiya	Heavy Fuel

Major Incidents reported during the day

November 24, 2023

- 1) Upper Kothmale Unit 01 tripped at 08:59hrs, rejecting 77 MW from the system due to a SCADA issue. System recovered with the operation of UFLS Stage I, and all affected feeders were normalized by 09:13hrs. Upper Kothmale Unit 01 resumed generation at 09:10hrs.
- 2) Upper Kothmale Unit 02 was unavailable from 08:52hrs to 17:53hrs due to fault in governor oil pump.
- 3) Victoria and Samanalawewa reservoirs spilling stopped at 06:15hrs and 05:43hrs(25.11.2023) respectively.
- 4) Kukule pond spilling stopped at 21:10hrs.
- 5) Upper Kothmale pond spilling continues to the present hour.