

Generation and Reservoirs Statistics

November 20, 2023



PUBLIC UTILITIES COMMISSION OF SRI LANKA

1. Daily Generation Mix in MWh

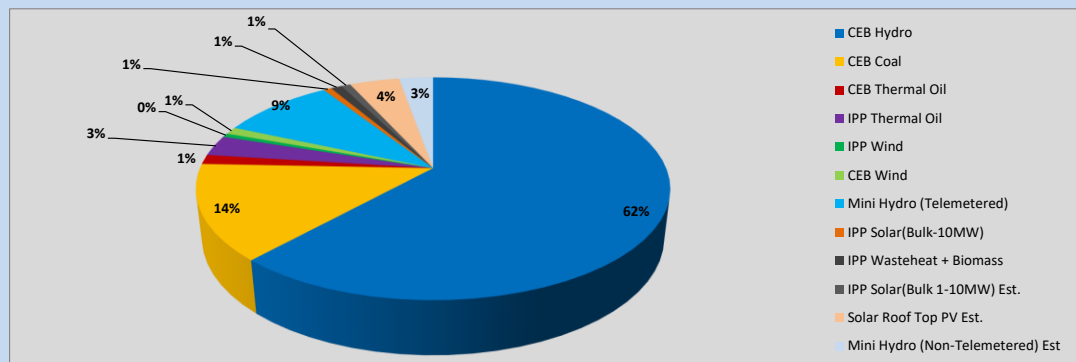


Table 01

	Generation (MWh)
CEB Hydro	24,949
CEB Coal	5,608
CEB Thermal Oil	556
IPP Thermal Oil	1,203
IPP Wind	224
CEB Wind	426
Mini Hydro (Telemetered)	3,749
IPP Solar (Bulk)	261
IPP Waste heat + Biomass	361
Total Generation (Excluding estimated figures)	37,337
* Estimated unserved energy	0
* Estimated Mini Hydro (Non telemetered)	1121
* Estimated IPP Solar PV (Bulk 1-10MW)	304
* Estimated Solar Roof Top PV	1640
Total Generation (Including estimated figures)	40,402

* Estimated figures of CEB generation report

Table 02

	Installed Capacity (MW)
CEB Hydro	1409
CEB Coal	810
CEB Thermal Oil	781
IPP Thermal Oil (West Coast, ACE Matara and ACE Embilipitiya)	387
IPP Wind	148
CEB Wind	100
Mini Hydro	422
IPP Waste heat + Biomass	50
IPP Solar	136
Rooftop Solar (Ordinary)	277
Rooftop Solar (LT Bulk)	263
Rooftop Solar (HT Bulk)	70

Data Source - Monthly Review Report [Aug-2023]

2. Cumulative Dispatch

Following data excludes the contribution from roof top solar, non telemetered solar and mini hydro plants

Table 03 - Current Month

Category	Dispatch (GWh)	
CEB Hydro	461	57.44%
CEB Coal	173	21.58%
CEB Thermal Oil	6	0.72%
IPP Thermal	3	0.43%
SPP Wind	6	0.69%
CEB Wind	7	0.85%
Mini Hydro *	97	12.14%
IPP Solar *	44	5.44%
IPP Waste heat + BMP	6	0.72%
Total	802	

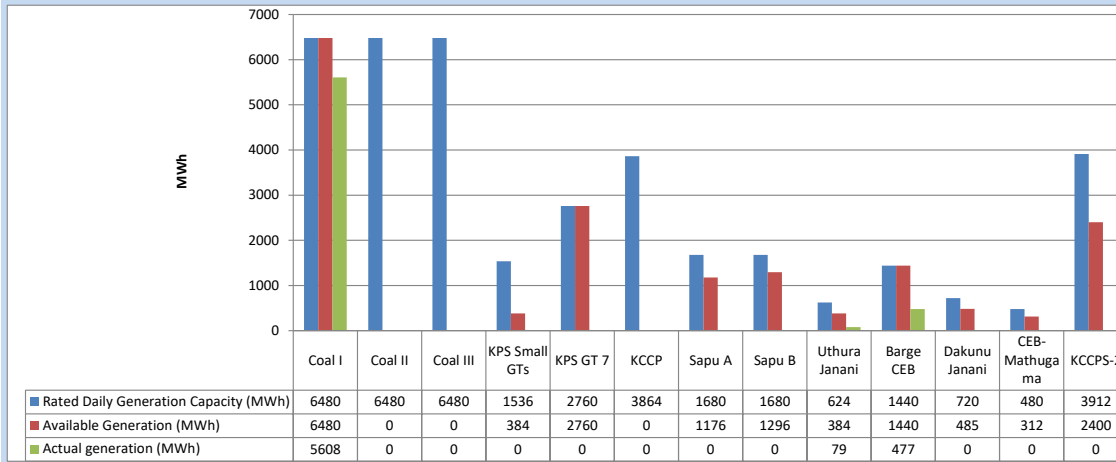
Table 04 - Current Year

Category	Dispatch (GWh)	
CEB Hydro	3,563	25.93%
CEB Coal	4,439	32.31%
CEB Thermal Oil	1,951	14.20%
IPP Thermal	1,117	8.13%
SPP Wind	370	2.69%
CEB Wind	359	2.61%
Mini Hydro *	1,024	7.45%
IPP Solar *	781	5.68%
IPP Waste heat	136	0.99%
Total	13,739	

*Including estimated contribution from non telemetered plants

3. CEB owned Thermal Plant Dispatch

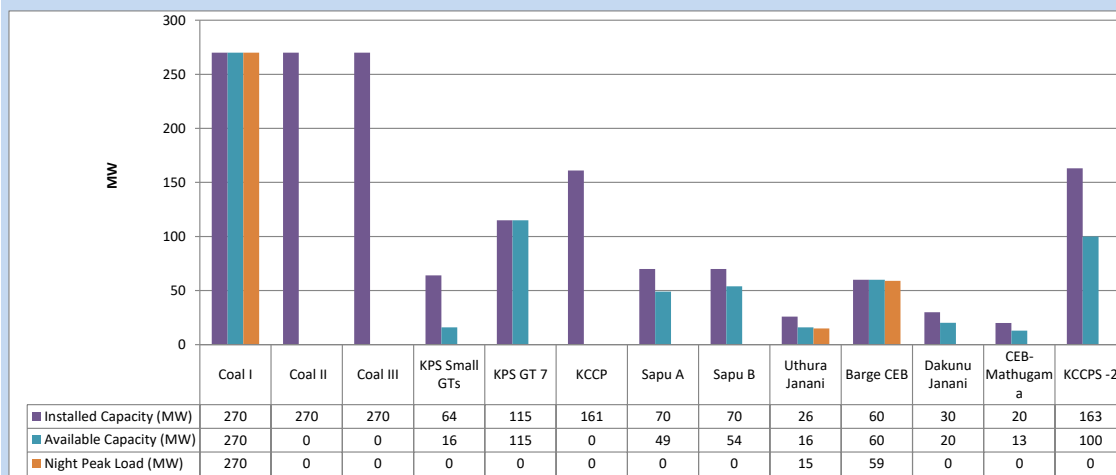
November 20, 2023



Available Generation is estimated based on plant availability at 6.00am on

November 21, 2023

4. CEB owned Thermal Plant Loading at the Night Peak

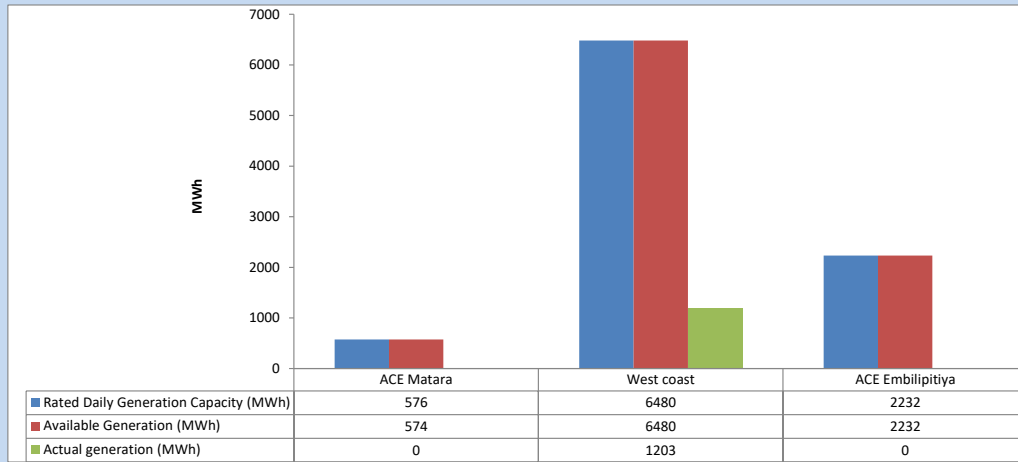


Plant availability is recorded at 6.00 am on

November 21, 2023

5. IPP owned Thermal Plant Dispatch

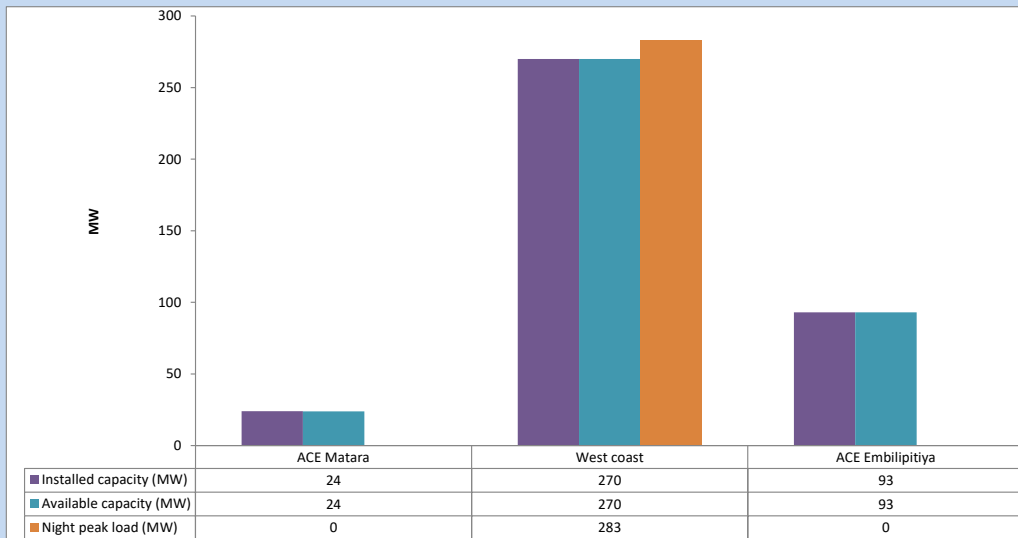
November 20, 2023



Available Generation is estimated based on plant availability at 6.00am on

November 21, 2023

6. IPP owned Thermal Plant Loading at the Night Peak

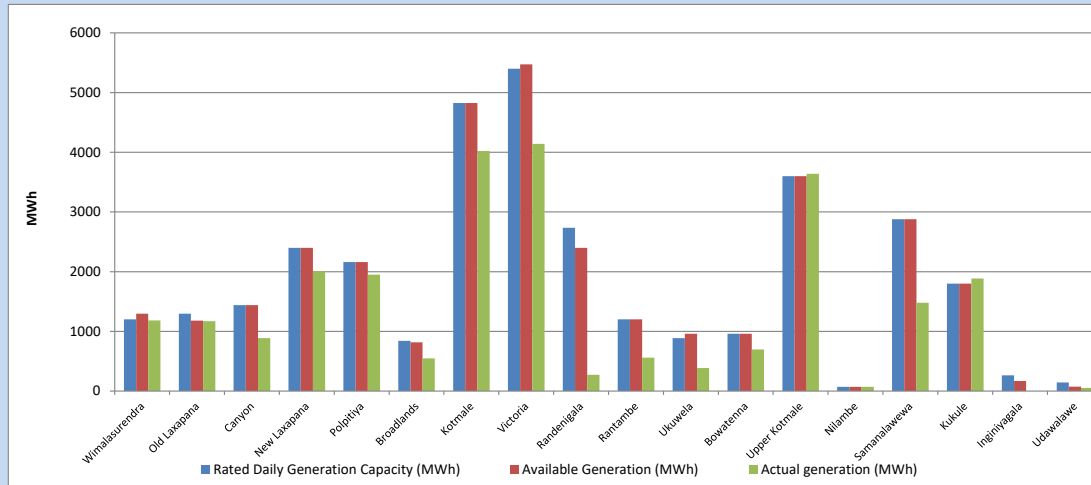


Plant availability is recorded at 6.00 am on

November 21, 2023

7. Major Hydro Plant Dispatch

November 20, 2023

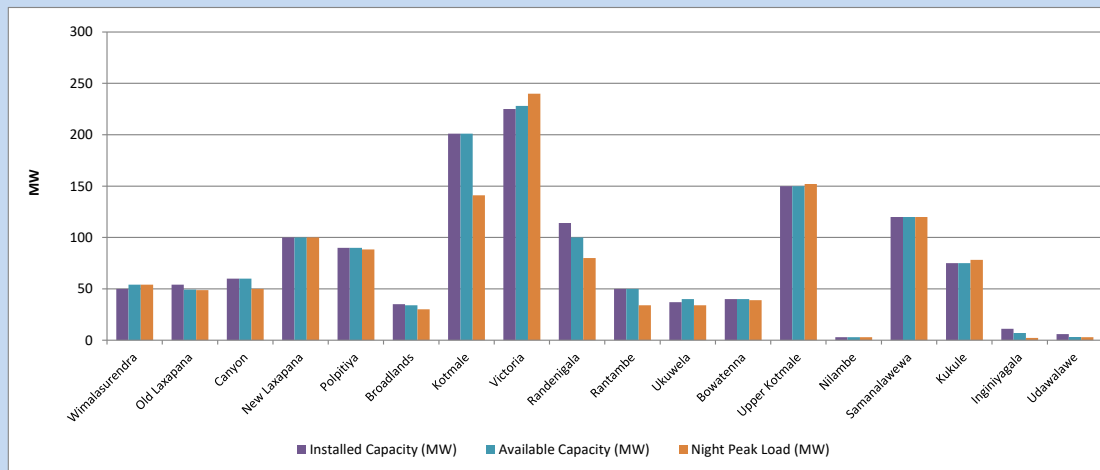


Available Generation is estimated based on plant availability at 6.00am on November 21, 2023
Broadlands power plant is operating in the Commissioning Stage

November 21, 2023

8. Major Hydro Plant Loading at Night Peak

November 20, 2023



Plant availability is recorded at 6.00 am on November 21, 2023
Broadlands power plant is operating in the Commissioning Stage

November 21, 2023

9. Summary of Major Plant performance

Table 05

Plant	Installed Capacity (MW)	Plant Availability (MW)	Night peak Load (MW)	Plant Dispatch (MWh)
Wimalasurendra	50	54	54	1,184
Old Laxapana Canyon	54	49	49	1,170
New Laxapana	60	60	50	888
Polpitiya	100	100	100	2,007
Broadlands	90	90	88	1,950
Kotmale	35	34	30	546
Victoria	201	201	141	4,020
Randenigala	225	228	240	4,141
Rantambe	114	100	80	273
Ukuwela	50	50	34	561
Bowatenna	37	40	34	384
Upper Kotmale	40	40	39	696
Nilambe	150	150	152	3,640
Samanalawewa	3	3	3	72
Kukule	120	120	120	1,479
Inginiyagala	75	75	78	1,886
Udawalawe	11	7	2	0
Puttalam Coal I	6	3	3	52
Puttalam Coal II	270	270	270	5,608
Puttalam Coal III	270	0	0	0
KPS Small GTs	270	0	0	0
KPS GT 7	64	16	0	0
KCCP	115	115	0	0
Sapugaskanda A	161	0	0	0
Sapugaskanda B	70	49	0	0
Uthura Janani	70	54	0	0
Barge CEB	26	16	15	79
CEB-Hambantota	60	60	59	477
CEB-Mathugama	30	20	0	0
ACE Matara	20	13	0	0
Asia Power	24	24	0	0
KCCPS -2	50	0	0	0
West Coast	163	100	0	0
Nothern Power	270	270	283	1,203
ACE Embilipitiya	36	0	0	0
Total	93	93	0	0
Total	3,483	2,504	2,136	37,337

Plant availability is the availability recorded at 6 am on

November 21, 2023

10. Contribution to the Night Peak in MW

November 20, 2023

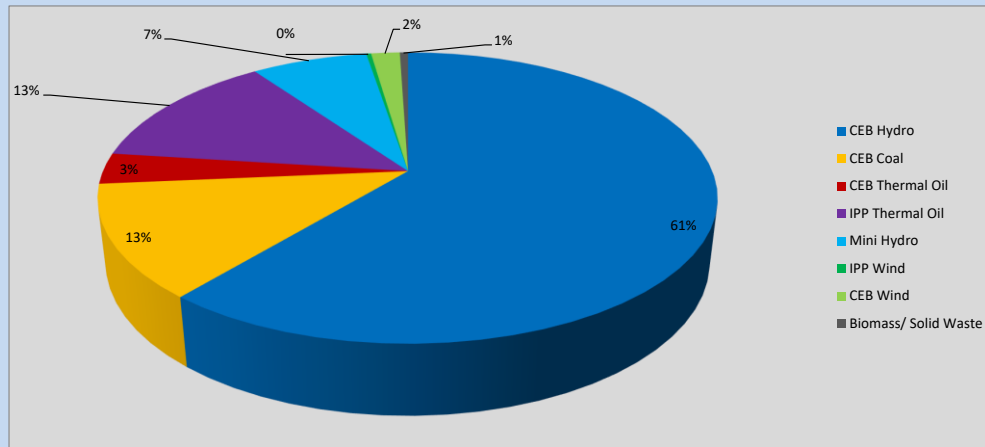


Table 06

CEB Hydro	1314	MW
CEB Coal	270	MW
CEB Thermal Oil	74	MW
IPP Thermal Oil	283	MW
Mini Hydro (Telemetered)	156	MW
IPP Wind	6.4	MW
CEB Wind	38.5	MW
Biomass/ Solid Waste	11	MW

Recorded Peak Demand Data

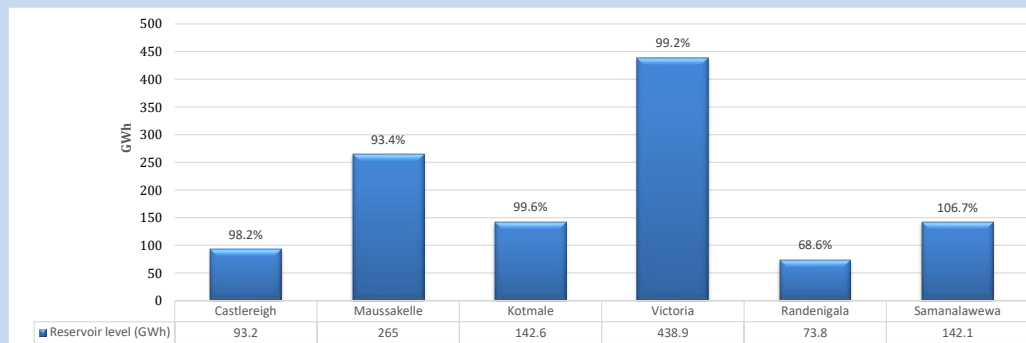
Table 07

Night Peak*	2,153	MW
Day Peak Maximum Demand	1,893	MW
Day Peak Minimum Demand	1,582	MW
Off Peak Minimum Demand	1,003	MW

Above figures are excluding contribution from roof top solar, non telemetered solar and mini hydro plants

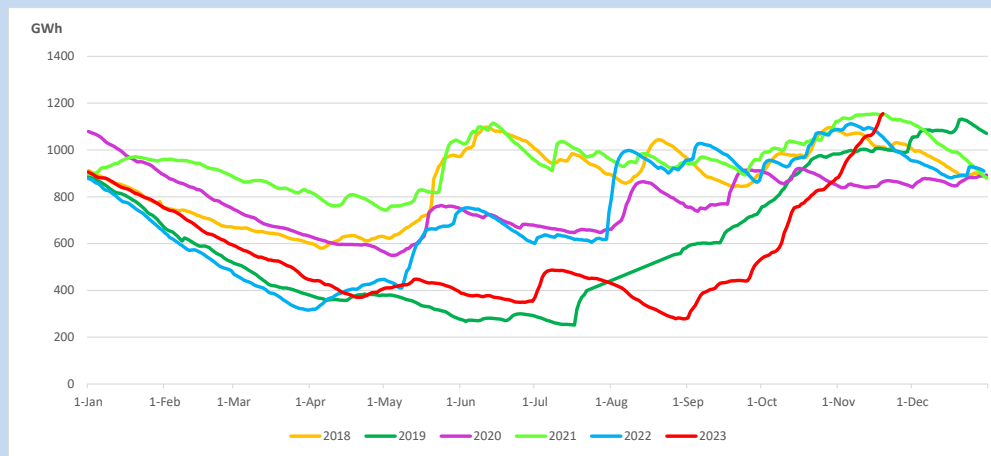
Reservoir Levels -

as at 06.00 Hr on November 21, 2023

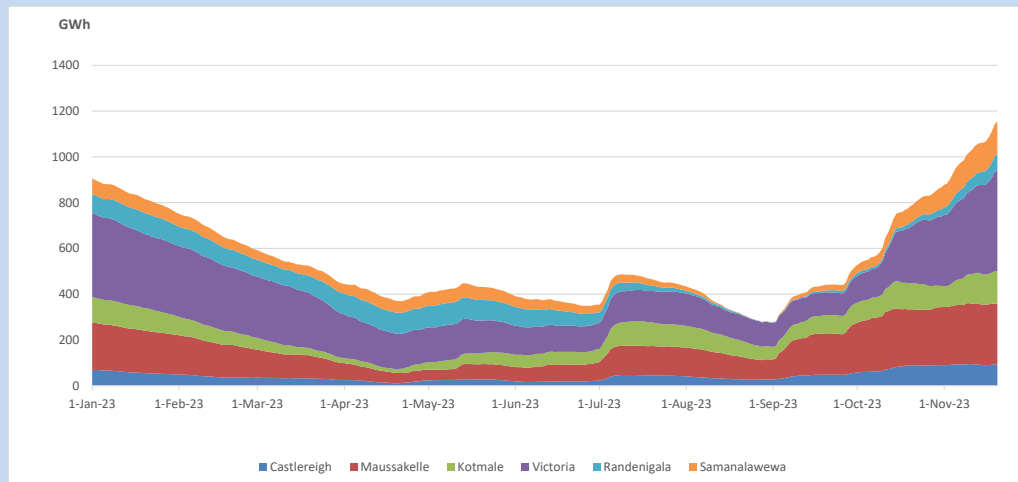


Total Reservoir Level 1155.6 GWh
 % of Total capacity 95.9%

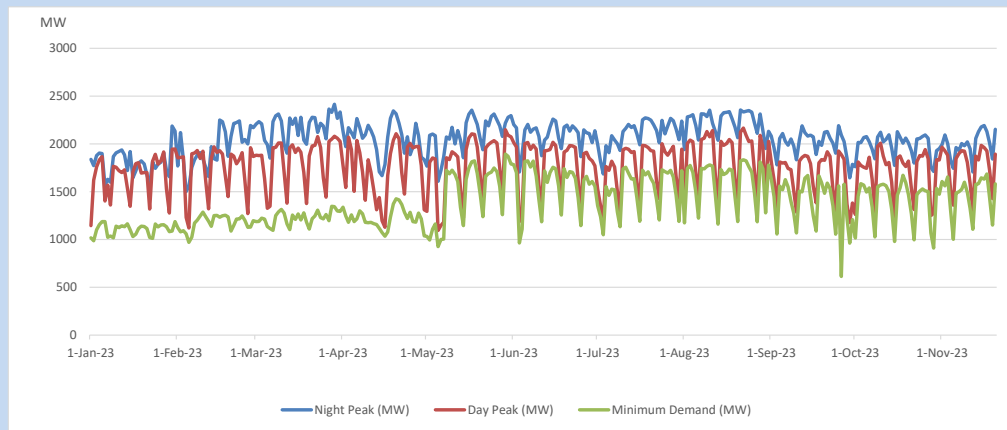
11. Comparison of Total Reservoir Storage Levels with Past Years



12. Variation of Major Hydro Reservoir Levels in the current year (GWh)



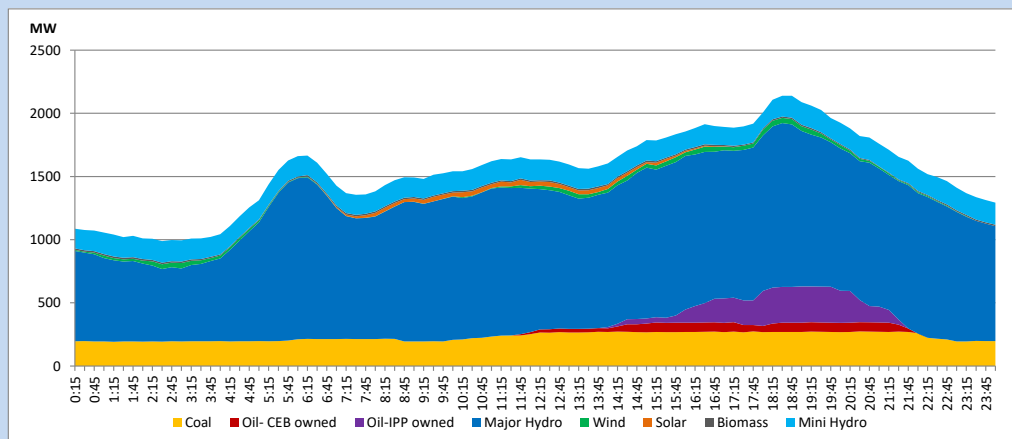
13. Variation of Demand during the current year



The above figures are excluding contribution from roof top solar, non telemetered solar and mini hydro plants

14. Daily Load Curve

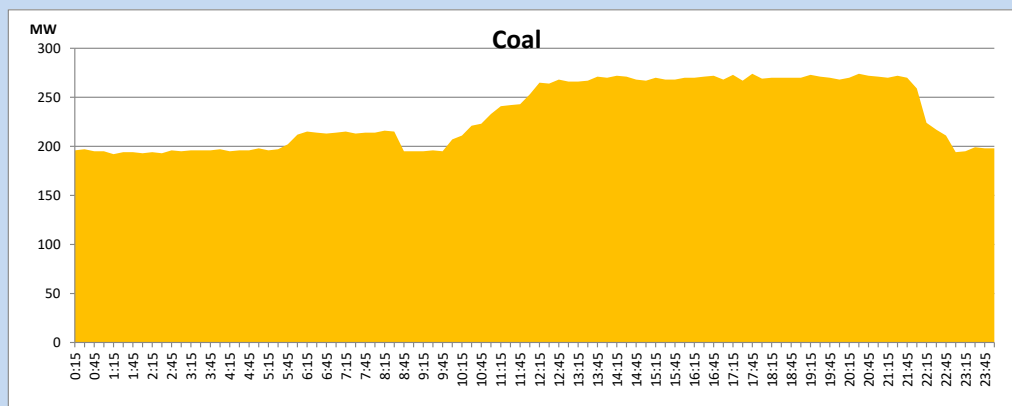
November 20, 2023



Solar and wind data is based on Telemetered Power Stations only

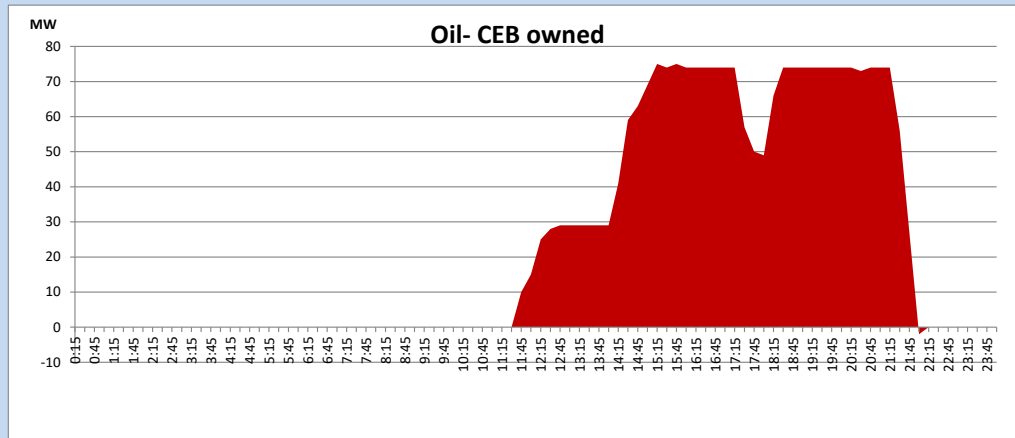
Coal Generation during

November 20, 2023



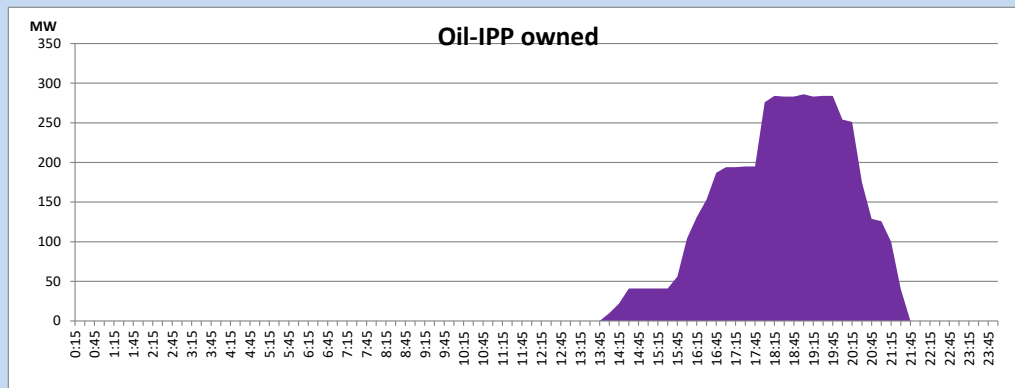
CEB Oil Plant Generation during

November 20, 2023



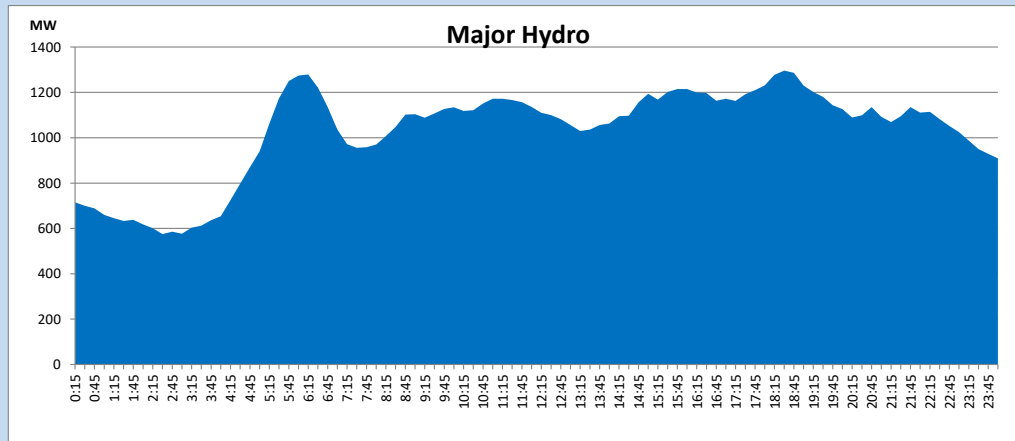
IPP Oil Plant Generation during

November 20, 2023



Major Hydro Generation during

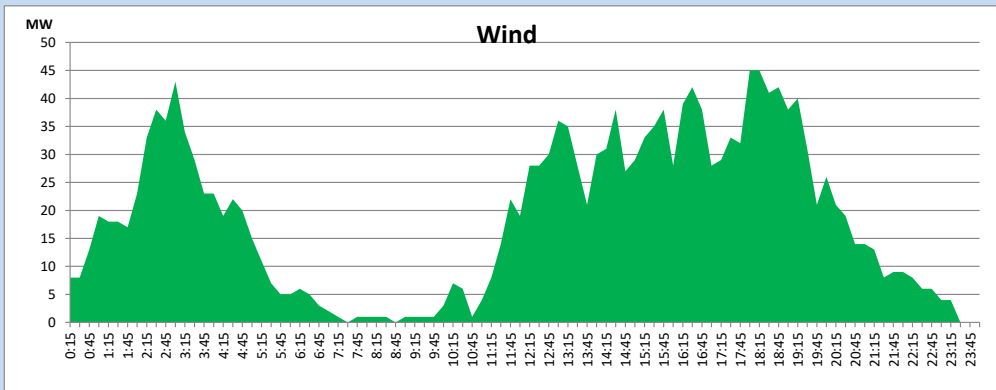
November 20, 2023



Wind Generation during

November 20, 2023

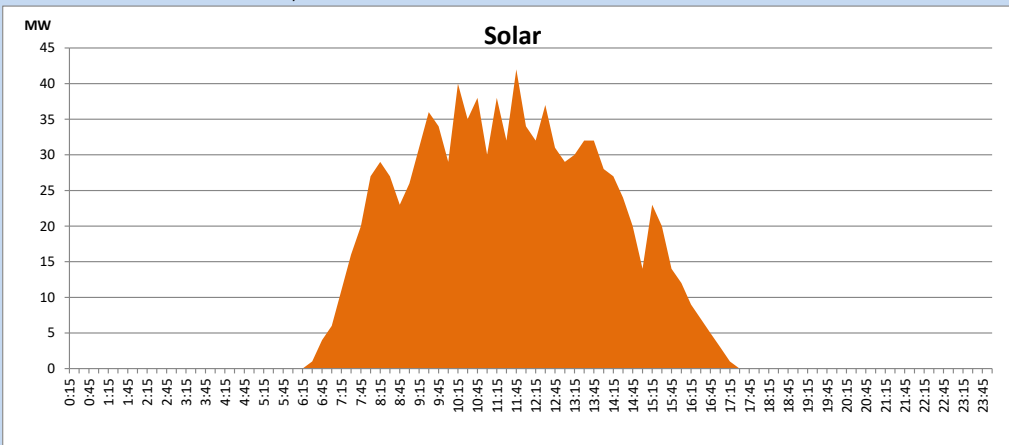
Based on Telemetered Power Stations only



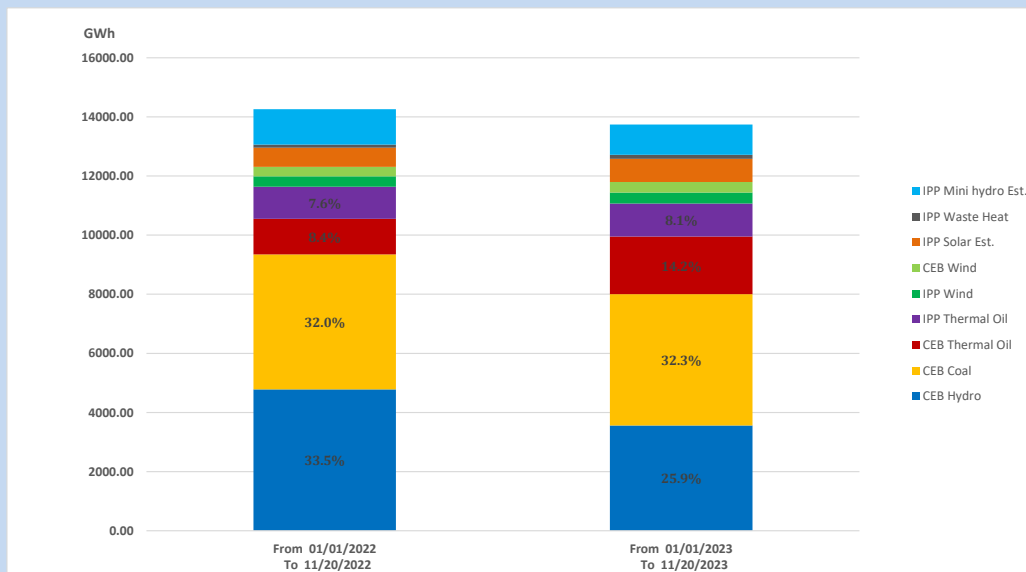
Solar Generation during

November 20, 2023

Based on Telemetered Power Stations only



15. Cumulative Dispatch Comparison with Last Year



Cumulative dispatch
 From 01/01/2022 To 11/20/2022
 From 01/01/2023 To 11/20/2023

14260 GWh
 13739 GWh

The above figures are including contribution from roof top solar, non telemetered solar and mini hydro plants (figures have been adjusted based on the data from the CEB monthly review reports.)

Thermal Plant Fuel types

Table 08

Power Station	Primary Fuel
CEB Thermal	
Sapugaskanda 1	Heavy Fuel
Sapugaskanda 2	Heavy Fuel
Kelanitissa Small Gas Turbines	Auto Diesel
GT 7 - Kelanitissa	Auto Diesel
Kelanitissa CCY	Naphtha or Diesel
Lakvijaya 1	Coal
Lakvijaya 2	Coal
Lakvijaya 3	Coal
Uthuru Janani	Heavy Fuel
Barge CEB	Heavy Fuel
KCCPS -2	Auto Diesel

Power Station	Primary Fuel
Private Thermal	
West Coast	Auto Diesel / Heavy Fuel
ACE Matara	Heavy Fuel
ACE Embilipitiya	Heavy Fuel

Major Incidents reported during the day

November 20, 2023

- 1) N'Chilaw - Puttalam 132kV cct 01 tripped from both ends at 06:07hrs due to the operation of distance protection. N' Chilaw - Puttalam cct 01 restored at 11:49hrs.
- 2) Aniyakanda 132/33kV T/F 02 tripped at 15:35hrs from both ends due to operation of SEF Protection. T/F 02 normalized at 16:38hrs.
- 3) Aniyakanda 132/33kV T/F 01 & 02 tripped at 20:15hrs from both ends due to operation of SEF protection, causing Aniyakanda all 33kV feeders to be dead. T/F 01 and 02 normalized at 20:41hrs, and all affected feeders were normalized by 20:43hrs.
- 4) Kukule pond spilling started at 17:55hrs and continues to the present hour.
- 5) Victoria reservoir spilling started at 20:08 hrs, and continues to the present hour.
- 6) Upper Kothmale pond spilling stopped at 02:00hrs(21.11.2023).