

# Generation and Reservoirs Statistics

November 18, 2023



**PUBLIC UTILITIES COMMISSION OF SRI LANKA**

## 1. Daily Generation Mix in MWh

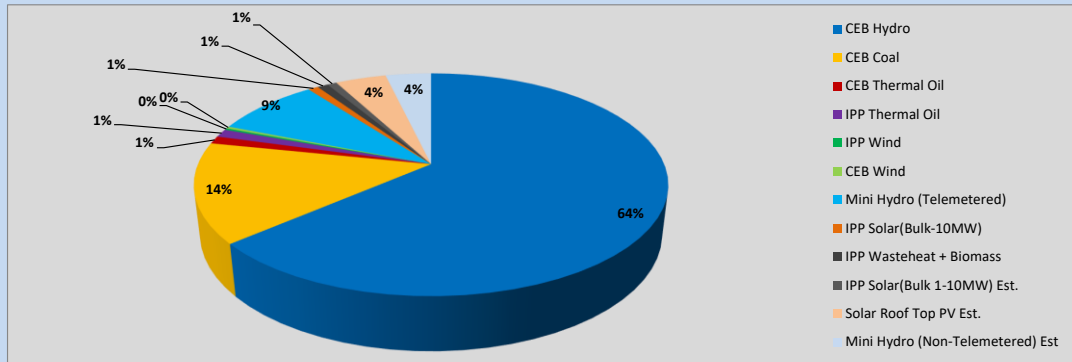


Table 01

	Generation (MWh)
CEB Hydro	25,195
CEB Coal	5,751
CEB Thermal Oil	441
IPP Thermal Oil	468
IPP Wind	102
CEB Wind	117
Mini Hydro (Telemetered)	3,404
IPP Solar (Bulk)	330
IPP Waste heat + Biomass	344
<b>Total Generation (Excluding estimated figures)</b>	<b>36,152</b>
* Estimated unserved energy	0
* Estimated Mini Hydro (Non telemetered)	1466
* Estimated IPP Solar PV (Bulk 1-10MW)	304
* Estimated Solar Roof Top PV	1640
<b>Total Generation (Including estimated figures)</b>	<b>39,562</b>

\* Estimated figures of CEB generation report

Table 02

	Installed Capacity (MW)
CEB Hydro	1409
CEB Coal	810
CEB Thermal Oil	781
IPP Thermal Oil (West Coast, ACE Matara and ACE Embilipitiya)	387
IPP Wind	148
CEB Wind	100
Mini Hydro	422
IPP Waste heat + Biomass	50
IPP Solar	136
Rooftop Solar (Ordinary)	277
Rooftop Solar (LT Bulk)	263
Rooftop Solar (HT Bulk)	70

Data Source - Monthly Review Report [Aug-2023]

## 2. Cumulative Dispatch

Following data excludes the contribution from roof top solar, non telemetered solar and mini hydro plants

Table 03 - Current Month

Category	Dispatch (GWh)	
CEB Hydro	414	56.92%
CEB Coal	163	22.37%
CEB Thermal Oil	5	0.69%
IPP Thermal	2	0.30%
SPP Wind	5	0.70%
CEB Wind	6	0.85%
Mini Hydro *	88	12.07%
IPP Solar *	39	5.41%
IPP Waste heat + BMP	5	0.70%
<b>Total</b>	<b>727</b>	

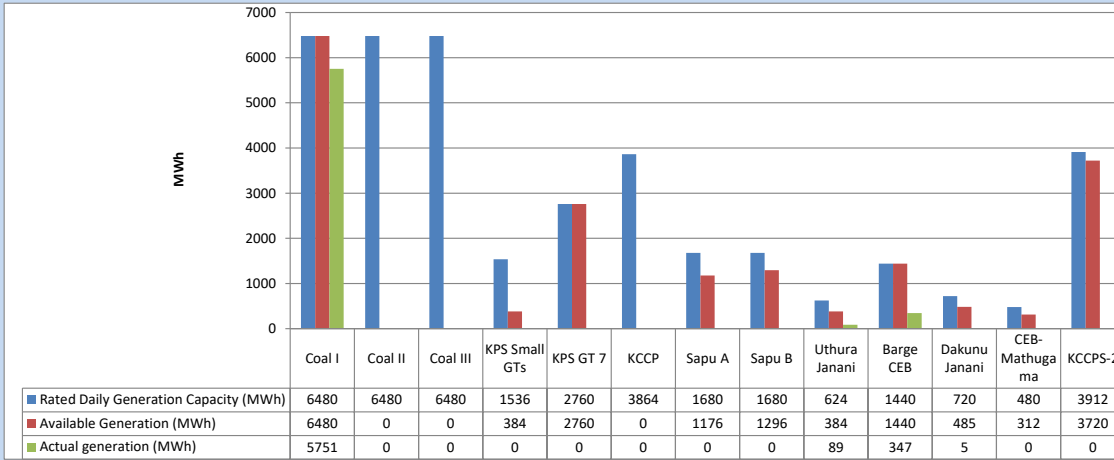
Table 04 - Current Year

Category	Dispatch (GWh)	
CEB Hydro	3,516	25.73%
CEB Coal	4,428	32.41%
CEB Thermal Oil	1,950	14.27%
IPP Thermal	1,116	8.17%
SPP Wind	370	2.71%
CEB Wind	358	2.62%
Mini Hydro *	1,014	7.42%
IPP Solar *	776	5.68%
IPP Waste heat	136	0.99%
<b>Total</b>	<b>13,664</b>	

\*Including estimated contribution from non telemetered plants

### 3. CEB owned Thermal Plant Dispatch

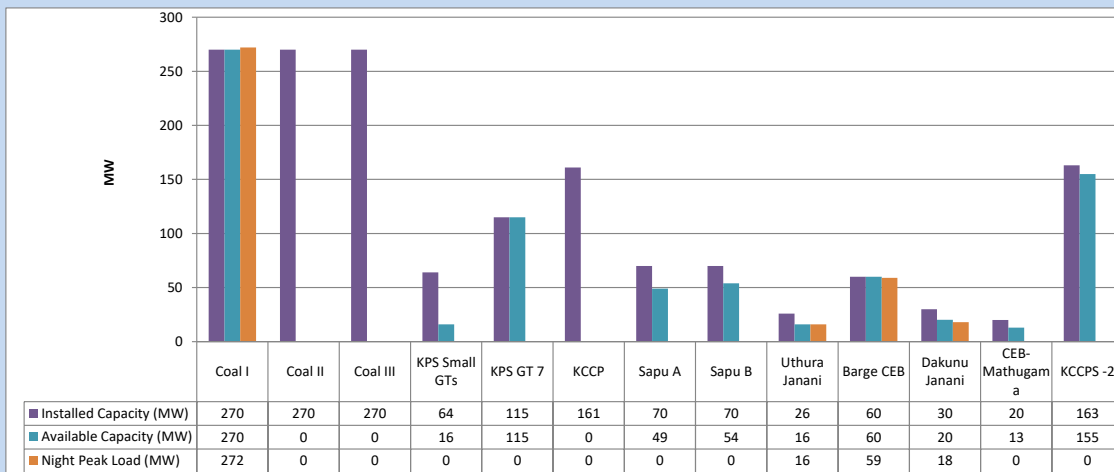
November 18, 2023



Available Generation is estimated based on plant availability at 6.00am on

November 19, 2023

### 4. CEB owned Thermal Plant Loading at the Night Peak

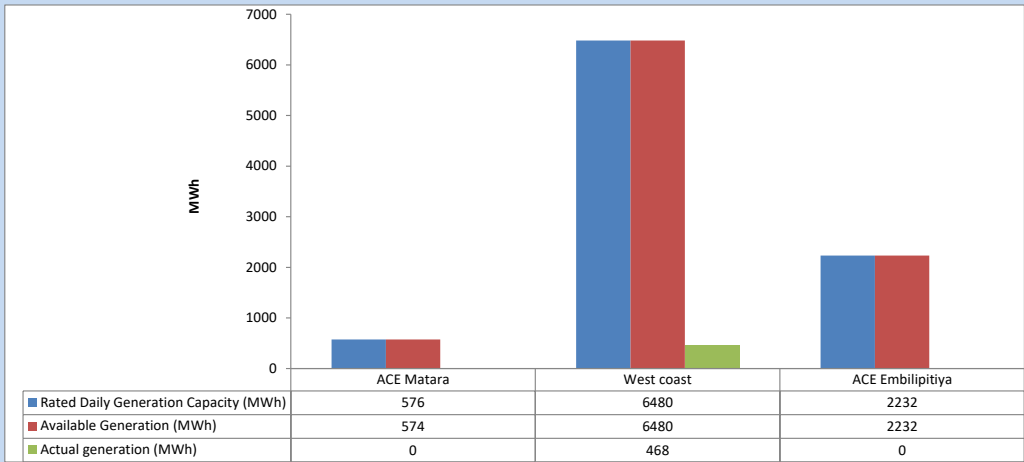


Plant availability is recorded at 6.00 am on

November 19, 2023

5. IPP owned Thermal Plant Dispatch

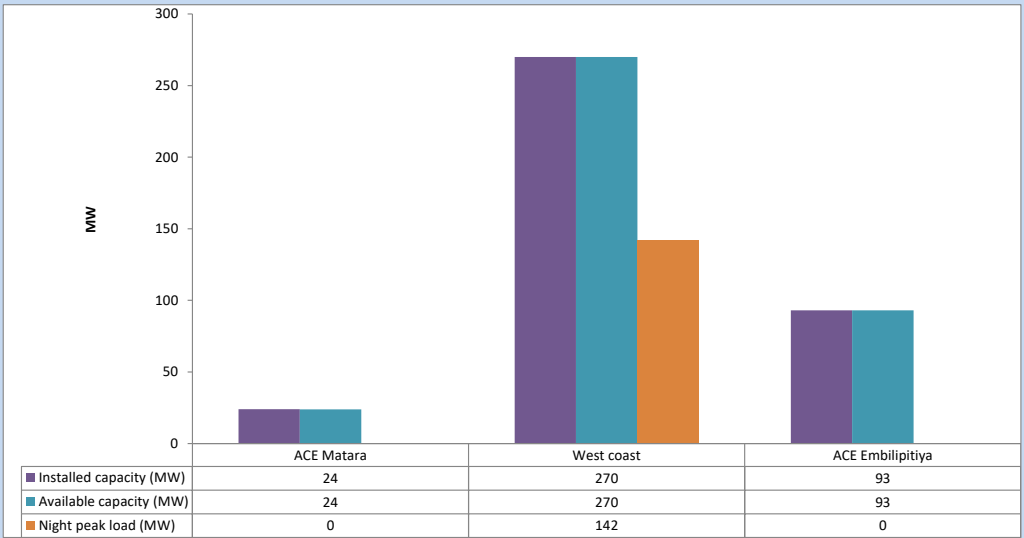
November 18, 2023



Available Generation is estimated based on plant availability at 6.00am on

November 19, 2023

6. IPP owned Thermal Plant Loading at the Night Peak

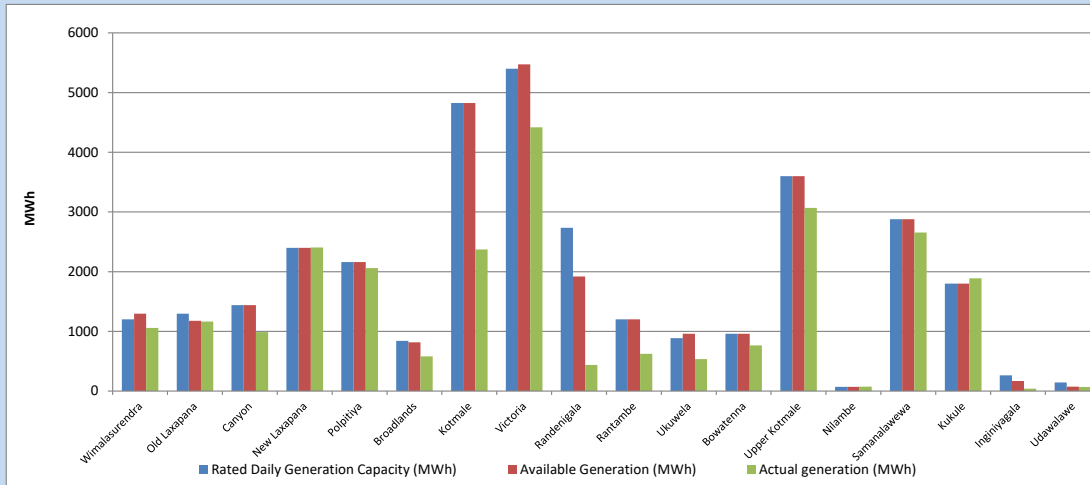


Plant availability is recorded at 6.00 am on

November 19, 2023

### 7. Major Hydro Plant Dispatch

November 18, 2023

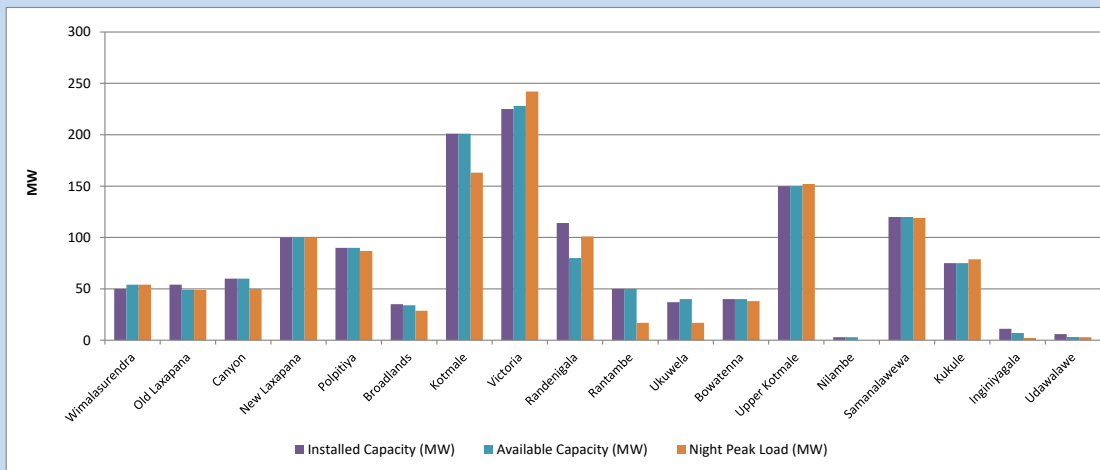


Available Generation is estimated based on plant availability at 6.00am on November 19, 2023  
Broadlands power plant is operating in the Commissioning Stage

November 19, 2023

### 8. Major Hydro Plant Loading at Night Peak

November 18, 2023



Plant availability is recorded at 6.00 am on November 19, 2023  
Broadlands power plant is operating in the Commissioning Stage

## 9. Summary of Major Plant performance

Table 05

Plant	Installed Capacity	Plant Availability	Night peak Load	Plant Dispatch
	(MW)	(MW)	(MW)	(MWh)
Wimalasurendra	50	54	54	1,057
Old Laxapana	54	49	49	1,164
Canyon	60	60	50	988
New Laxapana	100	100	100	2,404
Polpitiya	90	90	87	2,060
Broadlands	35	34	29	580
Kotmale	201	201	163	2,370
Victoria	225	228	242	4,419
Randenigala	114	80	101	436
Rantambe	50	50	17	624
Ukuwela	37	40	17	535
Bowatenna	40	40	38	764
Upper Kotmale	150	150	152	3,069
Nilambe	3	3	0	75
Samanalawewa	120	120	119	2,656
Kukule	75	75	79	1,888
Inginiyagala	11	7	2	39
Udawalawe	6	3	3	67
Puttalam Coal I	270	270	272	5,751
Puttalam Coal II	270	0	0	0
Puttalam Coal III	270	0	0	0
KPS Small GTs	64	16	0	0
KPS GT 7	115	115	0	0
KCCP	161	0	0	0
Sapugaskanda A	70	49	0	0
Sapugaskanda B	70	54	0	0
Uthura Janani	26	16	16	89
Barge CEB	60	60	59	347
CEB-Hambantota	30	20	18	5
CEB-Mathugama	20	13	0	0
ACE Matara	24	24	0	0
Asia Power	50	0	0	0
KCCPS -2	163	155	0	0
West Coast	270	270	142	468
Nothern Power	36	0	0	0
ACE Embilipitiya	93	93	0	0
<b>Total</b>	<b>3,483</b>	<b>2,539</b>	<b>1,975</b>	<b>36,152</b>

Plant availability is the availability recorded at 6 am on

November 19, 2023

### 10. Contribution to the Night Peak in MW

November 18, 2023

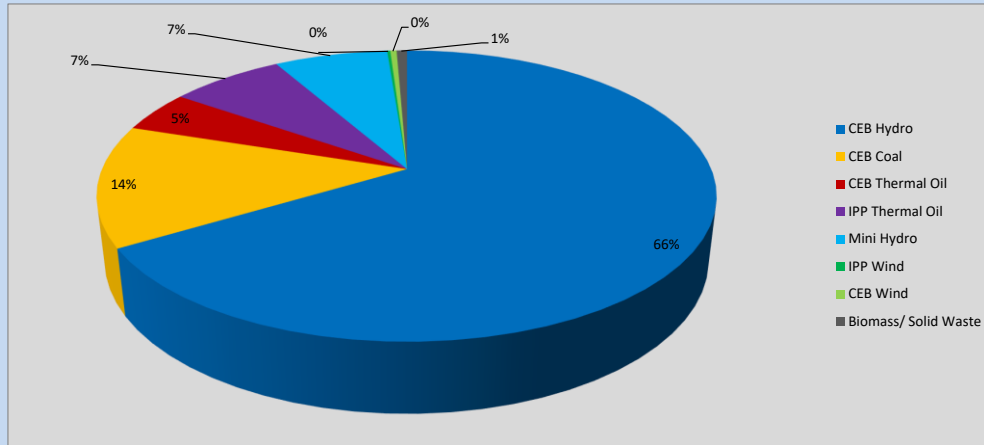


Table 06

CEB Hydro	1334	MW
CEB Coal	272	MW
CEB Thermal Oil	93	MW
IPP Thermal Oil	142	MW
Mini Hydro (Telemetered)	142	MW
IPP Wind	3.9	MW
CEB Wind	8	MW
Biomass/ Solid Waste	13	MW

#### Recorded Peak Demand Data

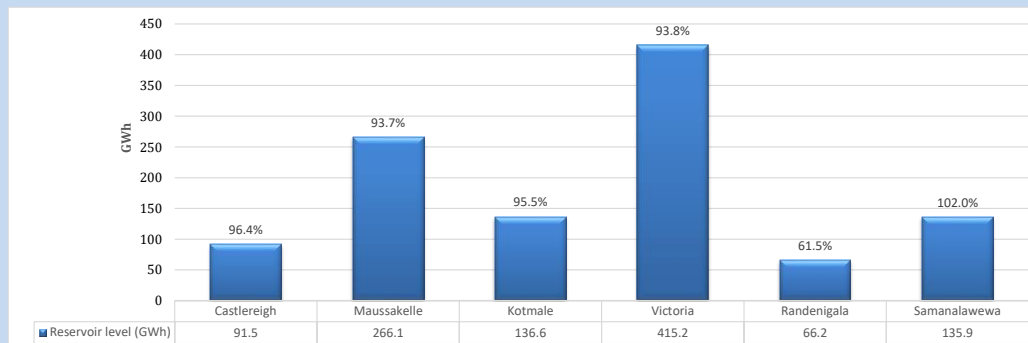
Table 07

Night Peak*	2,008	MW
Day Peak Maximum Demand	1,721	MW
Day Peak Minimum Demand	1,434	MW
Off Peak Minimum Demand	1,183	MW

Above figures are excluding contribution from roof top solar, non telemetered solar and mini hydro plants

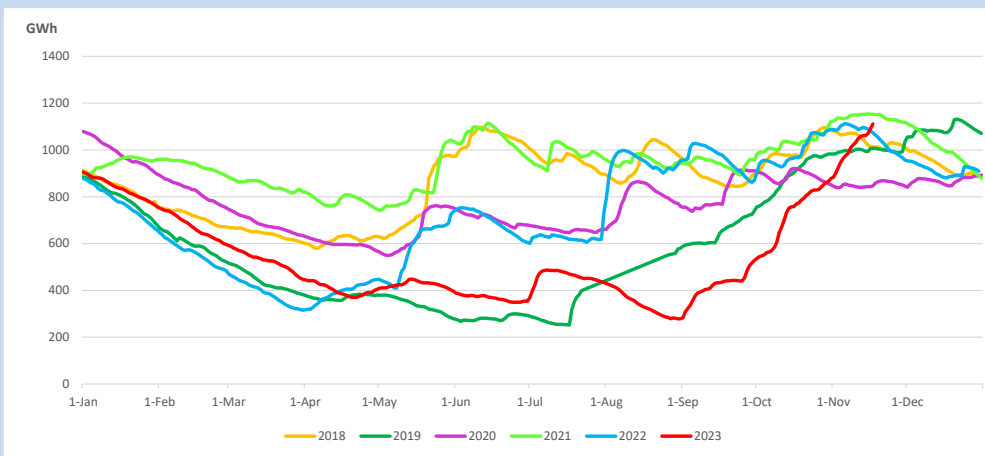
#### Reservoir Levels -

as at 06.00 Hr on November 19, 2023

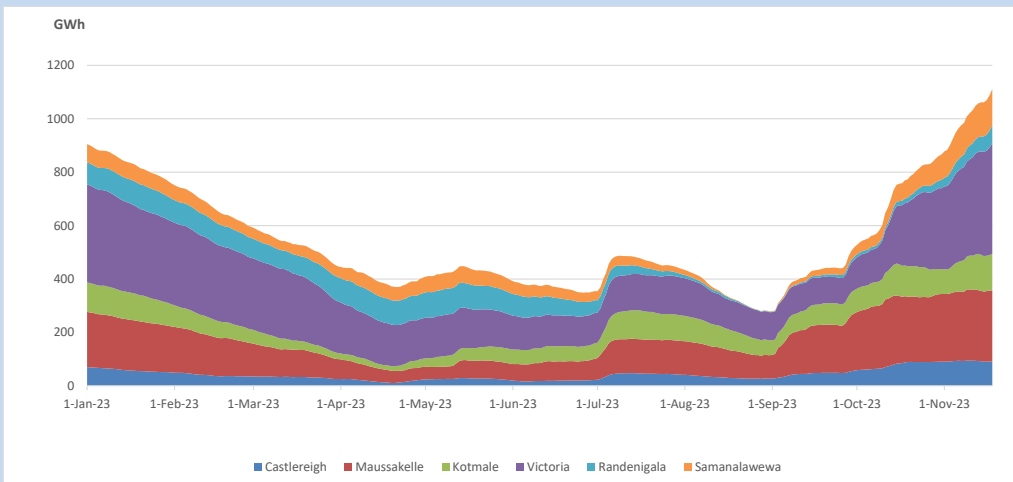


Total Reservoir Level            1111.5 GWh  
 % of Total capacity                92.2%

### 11. Comparison of Total Reservoir Storage Levels with Past Years

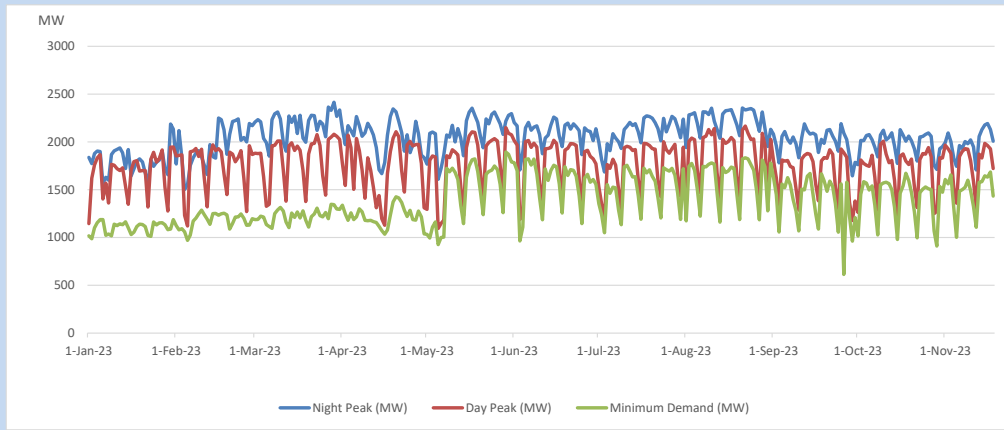


### 12. Variation of Major Hydro Reservoir Levels in the current year (GWh)





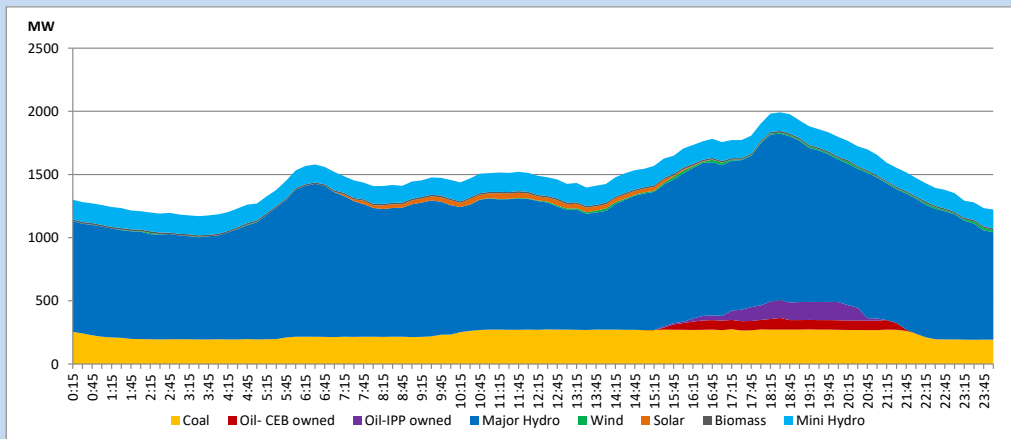
### 13. Variation of Demand during the current year



The above figures are excluding contribution from roof top solar, non telemetered solar and mini hydro plants

### 14. Daily Load Curve

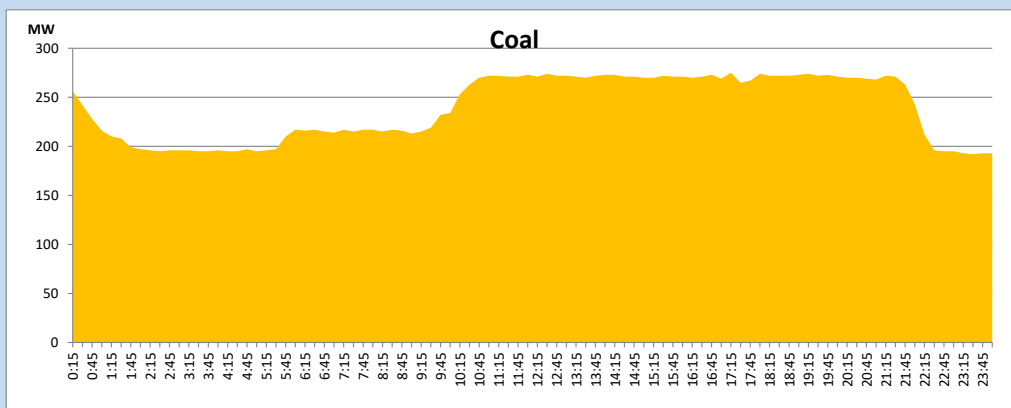
November 18, 2023



Solar and wind data is based on Telemetered Power Stations only

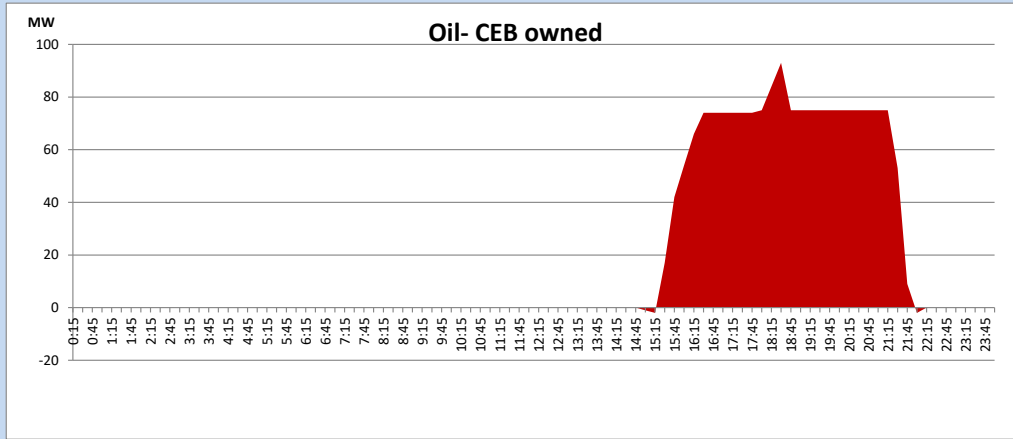
### Coal Generation during

November 18, 2023



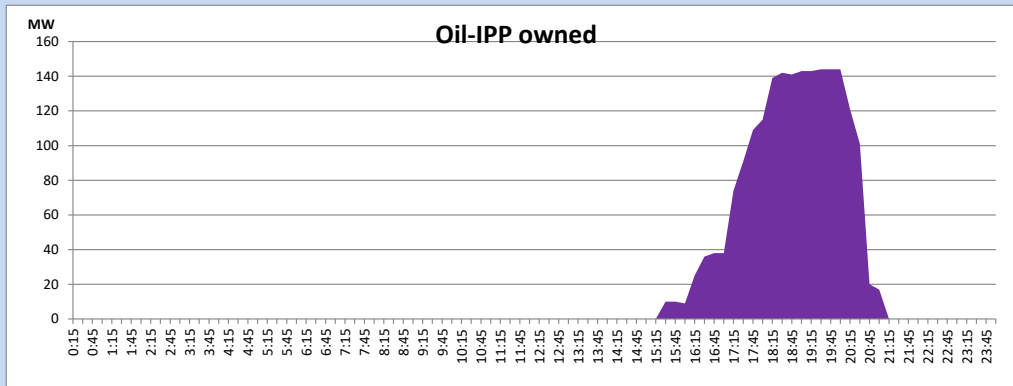
CEB Oil Plant Generation during

November 18, 2023



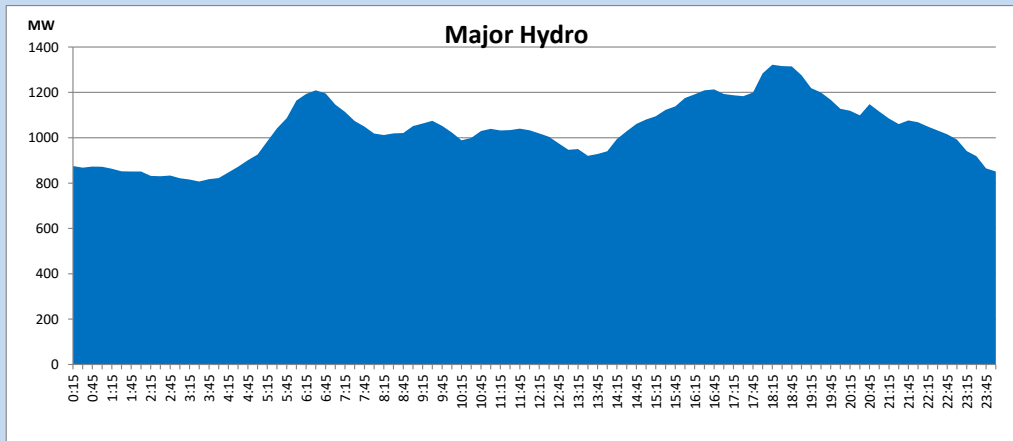
IPP Oil Plant Generation during

November 18, 2023



Major Hydro Generation during

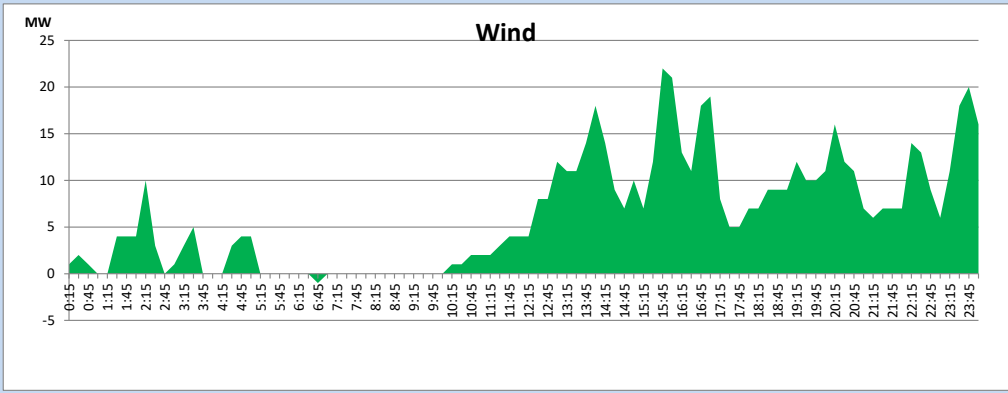
November 18, 2023



### Wind Generation during

November 18, 2023

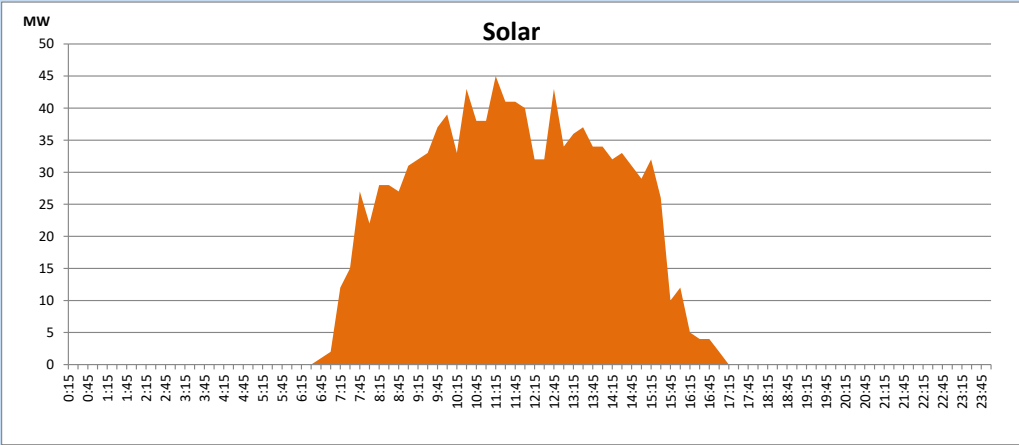
Based on Telemetered Power Stations only



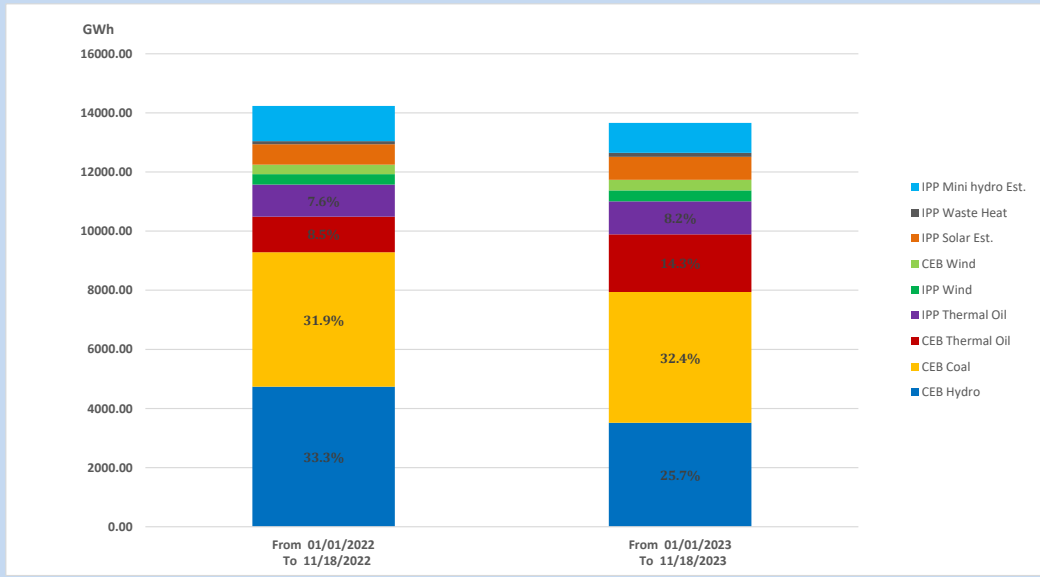
### Solar Generation during

November 18, 2023

Based on Telemetered Power Stations only



### 15. Cumulative Dispatch Comparison with Last Year



Cumulative dispatch  
 From 01/01/2022 To 11/18/2022  
 From 01/01/2023 To 11/18/2023

14237 GWh  
 13664 GWh

The above figures are including contribution from roof top solar, non telemetered solar and mini hydro plants (figures have been adjusted based on the data from the CEB monthly review reports.)

Thermal Plant Fuel types

Table 08

Power Station	Primary Fuel
CEB Thermal	
Sapugaskanda 1	Heavy Fuel
Sapugaskanda 2	Heavy Fuel
Kelanitissa Small Gas Turbines	Auto Diesel
GT 7 - Kelanitissa	Auto Diesel
Kelanitissa CCY	Naphtha or Diesel
Lakvijaya 1	Coal
Lakvijaya 2	Coal
Lakvijaya 3	Coal
Uthuru Janani	Heavy Fuel
Barge CEB	Heavy Fuel
KCCPS -2	Auto Diesel

Power Station	Primary Fuel
Private Thermal	
West Coast	Auto Diesel / Heavy Fuel
ACE Matara	Heavy Fuel
ACE Embilipitiya	Heavy Fuel

Major Incidents reported during the day

November 18, 2023

- 1) Biyagama - Kotmale 220kV cct tripped & A/R from both ends at 17:45hrs, due to operation of Differential Protection.
- 2) N'Chilaw 220/132kV T/F 02 tripped from both sides at 1:13hrs(19/11/2023). N'Chilaw 220/132kV T/F 02 is yet to be restored.
- 3) Kukulale spilling stopped at 10:45hrs and started again at 18:02hrs. Spilling continues to the present hour.
- 4) Upper Kotmale spilling started at 8:21hrs and continues to the present hour.