

Generation and Reservoirs Statistics

November 15, 2023



PUBLIC UTILITIES COMMISSION OF SRI LANKA

1. Daily Generation Mix in MWh

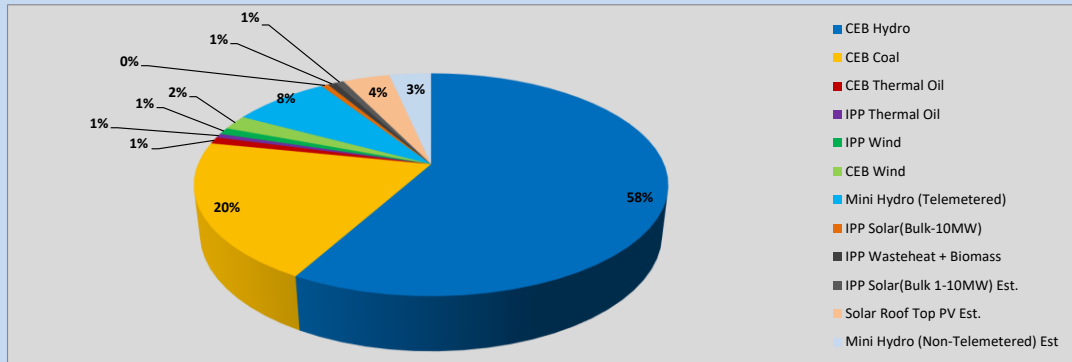


Table 01

	Generation (MWh)
CEB Hydro	24,889
CEB Coal	8,624
CEB Thermal Oil	418
IPP Thermal Oil	258
IPP Wind	421
CEB Wind	906
Mini Hydro (Telemetered)	3,409
IPP Solar (Bulk)	241
IPP Waste heat + Biomass	275
Total Generation (Excluding estimated figures)	39,441
* Estimated unserved energy	0
* Estimated Mini Hydro (Non telemetered)	1461
* Estimated IPP Solar PV (Bulk 1-10MW)	304
* Estimated Solar Roof Top PV	1640
Total Generation (Including estimated figures)	42,846

* Estimated figures of CEB generation report

Table 02

	Installed Capacity (MW)
CEB Hydro	1409
CEB Coal	810
CEB Thermal Oil	781
IPP Thermal Oil (West Coast, ACE Matara and ACE Embilipitiya)	387
IPP Wind	148
CEB Wind	100
Mini Hydro	422
IPP Waste heat + Biomass	50
IPP Solar	136
Rooftop Solar (Ordinary)	277
Rooftop Solar (LT Bulk)	263
Rooftop Solar (HT Bulk)	70

Data Source - Monthly Review Report [Aug-2023]

2. Cumulative Dispatch

Following data excludes the contribution from roof top solar, non telemetered solar and mini hydro plants

Table 03 - Current Month

Category	Dispatch (GWh)	
CEB Hydro	341	56.77%
CEB Coal	135	22.48%
CEB Thermal Oil	4	0.60%
IPP Thermal	1	0.20%
SPP Wind	5	0.77%
CEB Wind	5	0.90%
Mini Hydro *	73	12.17%
IPP Solar *	33	5.43%
IPP Waste heat + BMP	4	0.69%
Total	600	

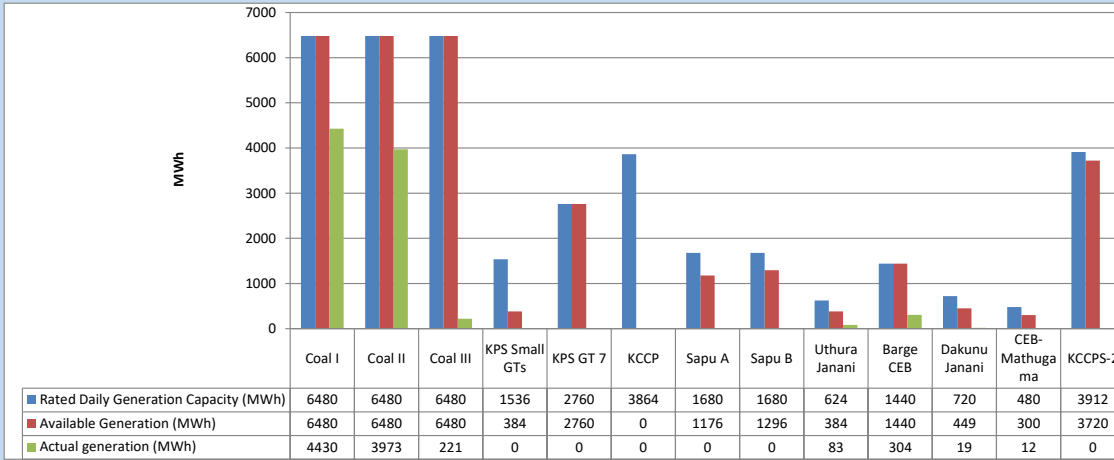
Table 04 - Current Year

Category	Dispatch (GWh)	
CEB Hydro	3,443	25.43%
CEB Coal	4,401	32.51%
CEB Thermal Oil	1,948	14.39%
IPP Thermal	1,115	8.24%
SPP Wind	369	2.73%
CEB Wind	358	2.64%
Mini Hydro *	999	7.38%
IPP Solar *	770	5.69%
IPP Waste heat	135	0.99%
Total	13,538	

*Including estimated contribution from non telemetered plants

3. CEB owned Thermal Plant Dispatch

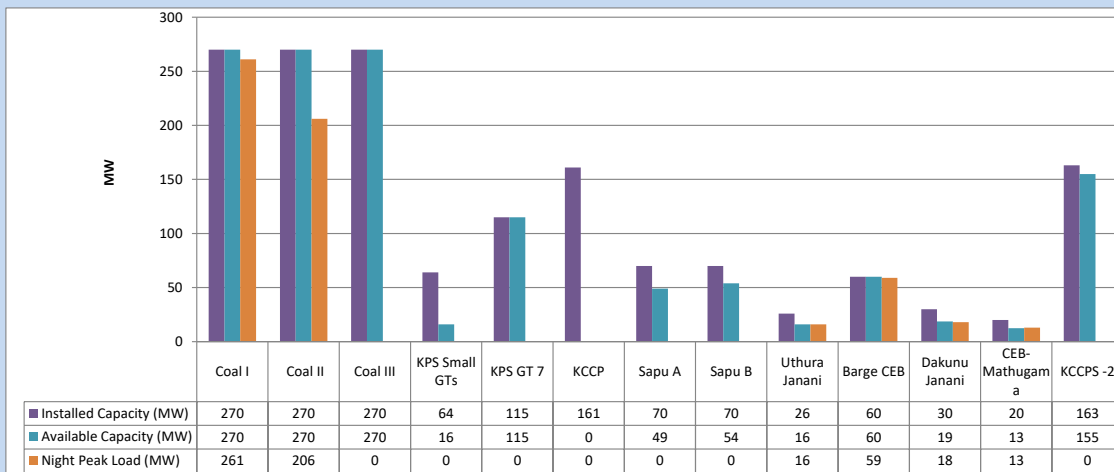
November 15, 2023



Available Generation is estimated based on plant availability at 6.00am on

November 16, 2023

4. CEB owned Thermal Plant Loading at the Night Peak

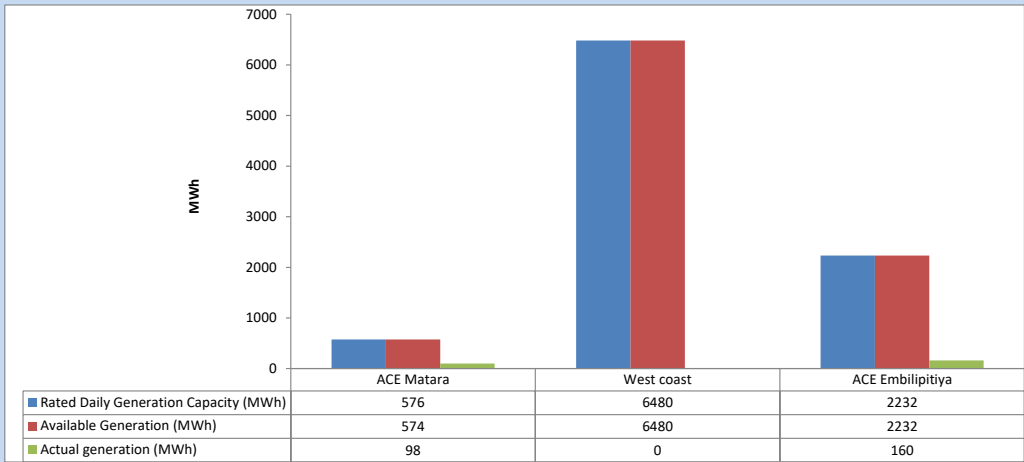


Plant availability is recorded at 6.00 am on

November 16, 2023

5. IPP owned Thermal Plant Dispatch

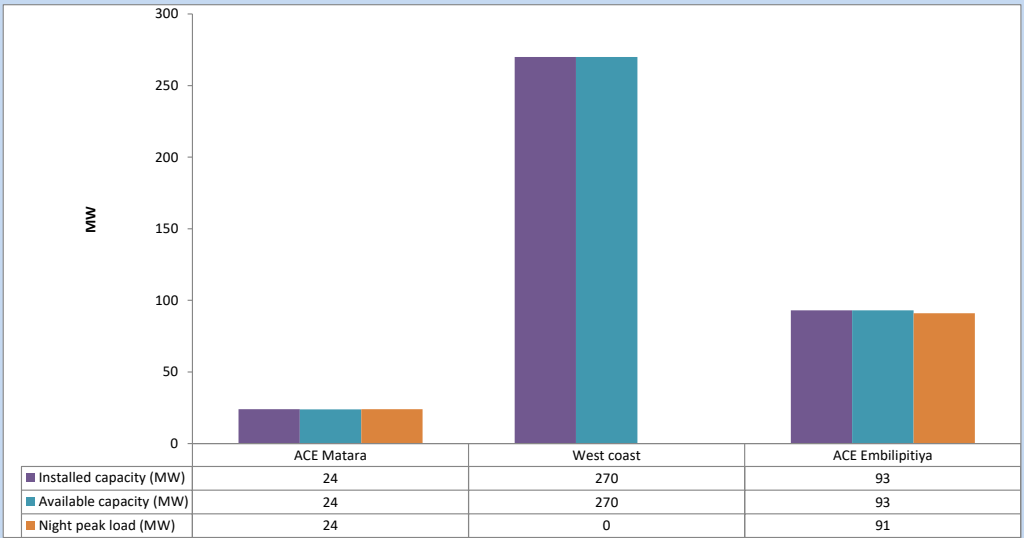
November 15, 2023



Available Generation is estimated based on plant availability at 6.00am on

November 16, 2023

6. IPP owned Thermal Plant Loading at the Night Peak

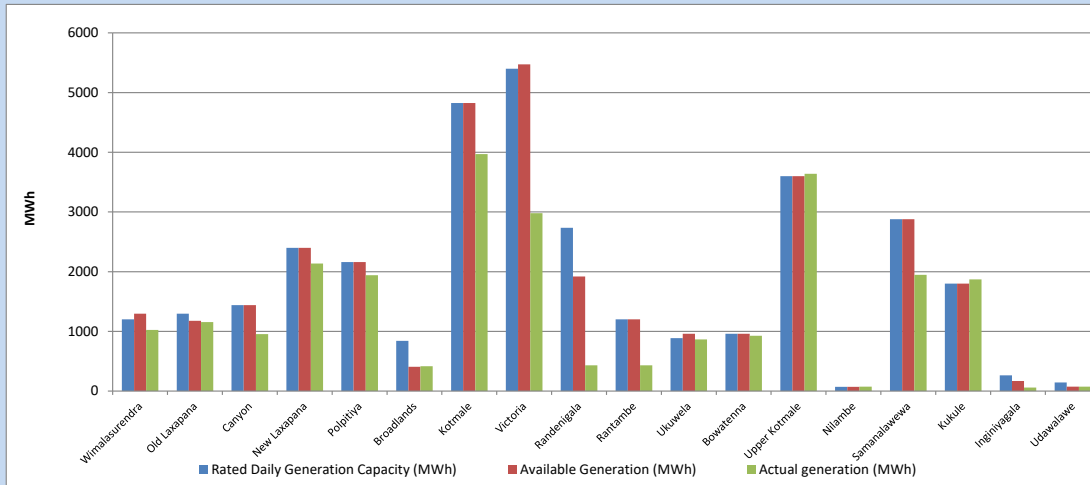


Plant availability is recorded at 6.00 am on

November 16, 2023

7. Major Hydro Plant Dispatch

November 15, 2023

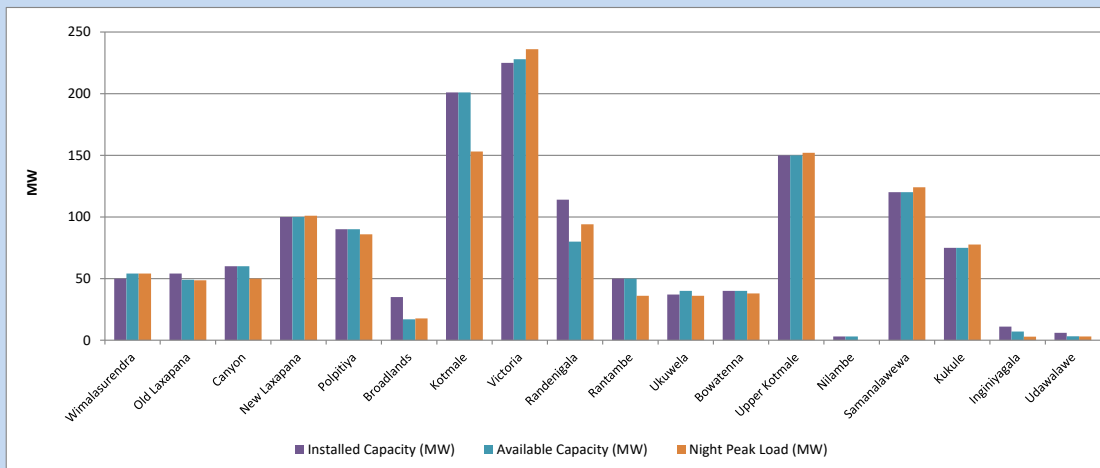


Available Generation is estimated based on plant availability at 6.00am on November 16, 2023
Broadlands power plant is operating in the Commissioning Stage

November 16, 2023

8. Major Hydro Plant Loading at Night Peak

November 15, 2023



Plant availability is recorded at 6.00 am on November 16, 2023
Broadlands power plant is operating in the Commissioning Stage

November 16, 2023

9. Summary of Major Plant performance

Table 05

Plant	Installed Capacity	Plant Availability	Night peak Load	Plant Dispatch
	(MW)	(MW)	(MW)	(MWh)
Wimalasurendra	50	54	54	1,023
Old Laxapana	54	49	49	1,155
Canyon	60	60	50	955
New Laxapana	100	100	101	2,135
Polpitiya	90	90	86	1,940
Broadlands	35	17	18	417
Kotmale	201	201	153	3,970
Victoria	225	228	236	2,979
Randenigala	114	80	94	430
Rantambe	50	50	36	430
Ukuwela	37	40	36	866
Bowatenna	40	40	38	926
Upper Kotmale	150	150	152	3,638
Nilambe	3	3	0	74
Samanalawewa	120	120	124	1,948
Kukule	75	75	78	1,870
Inginiyagala	11	7	3	60
Udawalawe	6	3	3	73
Puttalam Coal I	270	270	261	4,430
Puttalam Coal II	270	270	206	3,973
Puttalam Coal III	270	270	0	221
KPS Small GTs	64	16	0	0
KPS GT 7	115	115	0	0
KCCP	161	0	0	0
Sapugaskanda A	70	49	0	0
Sapugaskanda B	70	54	0	0
Uthura Janani	26	16	16	83
Barge CEB	60	60	59	304
CEB-Hambantota	30	19	18	19
CEB-Mathugama	20	13	13	12
ACE Matara	24	24	24	98
Asia Power	50	0	0	0
KCCPS -2	163	155	0	0
West Coast	270	270	0	0
Nothern Power	36	0	0	0
ACE Embilipitiya	93	93	91	160
Total	3,483	3,060	2,164	39,441

Plant availability is the availability recorded at 6 am on

November 16, 2023

10. Contribution to the Night Peak in MW

November 15, 2023

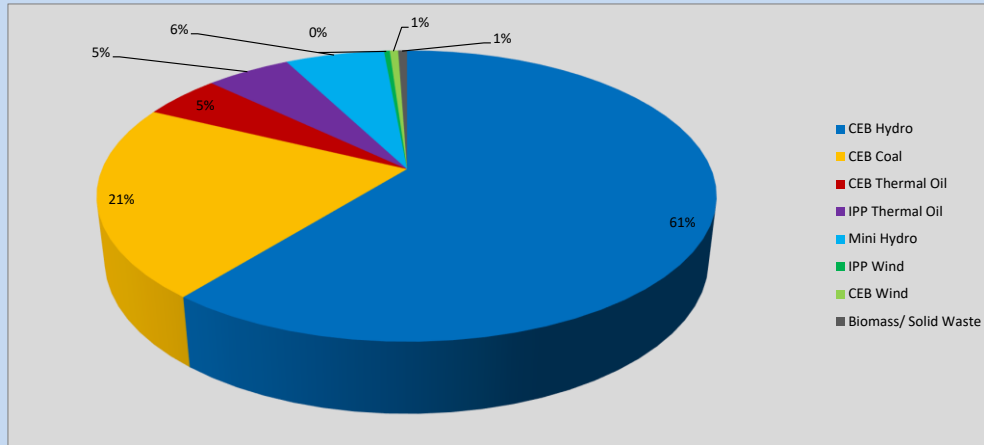


Table 06

CEB Hydro	1324	MW
CEB Coal	467	MW
CEB Thermal Oil	106	MW
IPP Thermal Oil	115	MW
Mini Hydro (Telemetered)	135	MW
IPP Wind	7.9	MW
CEB Wind	11.4	MW
Biomass/ Solid Waste	12	MW

Recorded Peak Demand Data

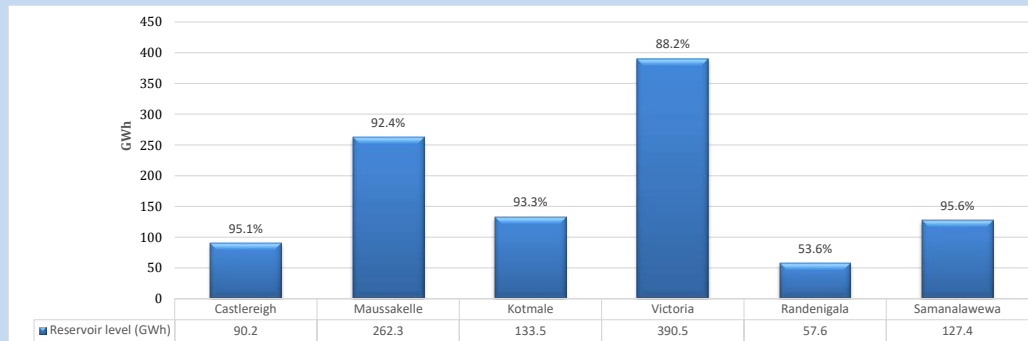
Table 07

Night Peak*	2,178	MW
Day Peak Maximum Demand	1,984	MW
Day Peak Minimum Demand	1,645	MW
Off Peak Minimum Demand	1,122	MW

Above figures are excluding contribution from roof top solar, non telemetered solar and mini hydro plants

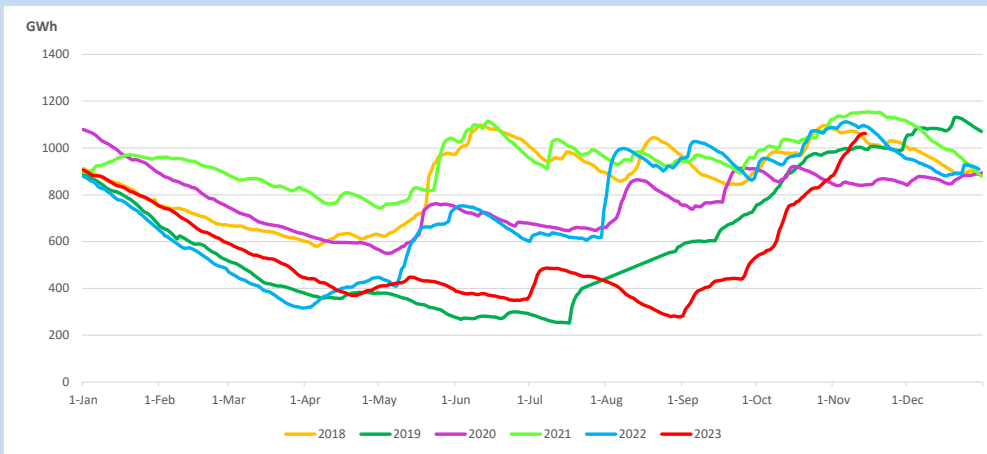
Reservoir Levels -

as at 06.00 Hr on November 16, 2023

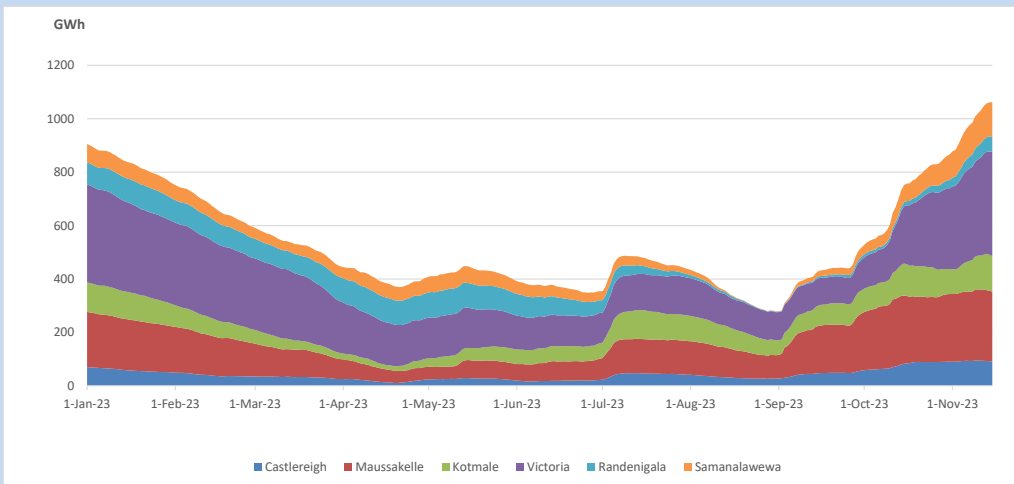


Total Reservoir Level 1061.5 GWh
% of Total capacity 88.1%

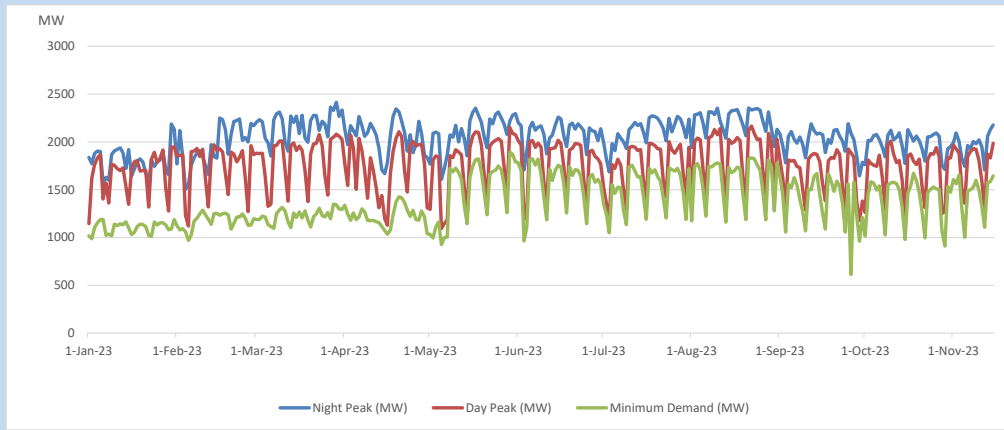
11. Comparison of Total Reservoir Storage Levels with Past Years



12. Variation of Major Hydro Reservoir Levels in the current year (GWh)



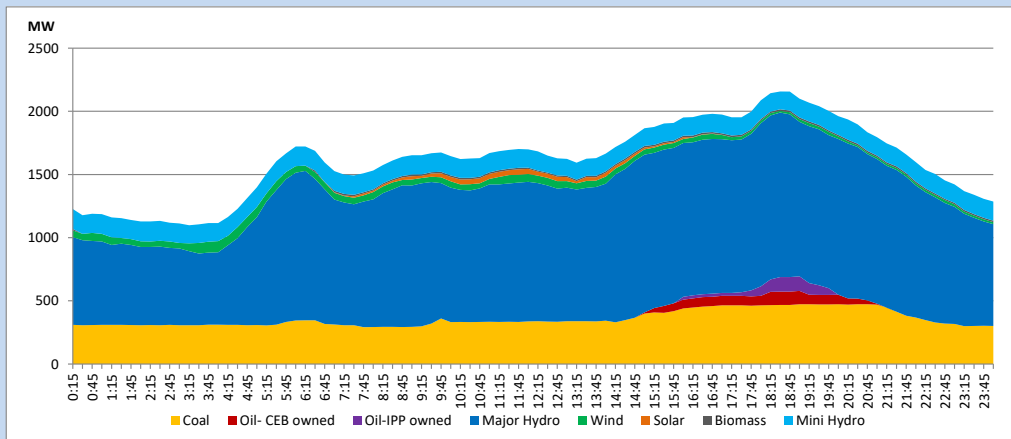
13. Variation of Demand during the current year



The above figures are excluding contribution from roof top solar, non telemetered solar and mini hydro plants

14. Daily Load Curve

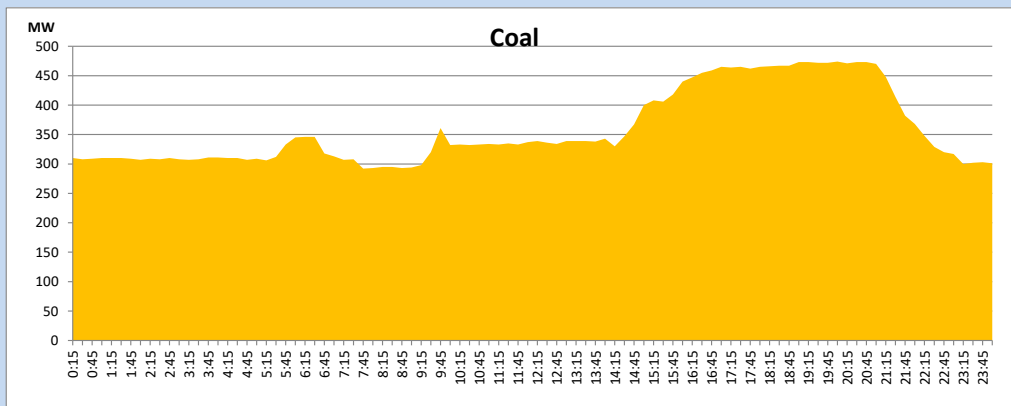
November 15, 2023



Solar and wind data is based on Telemetered Power Stations only

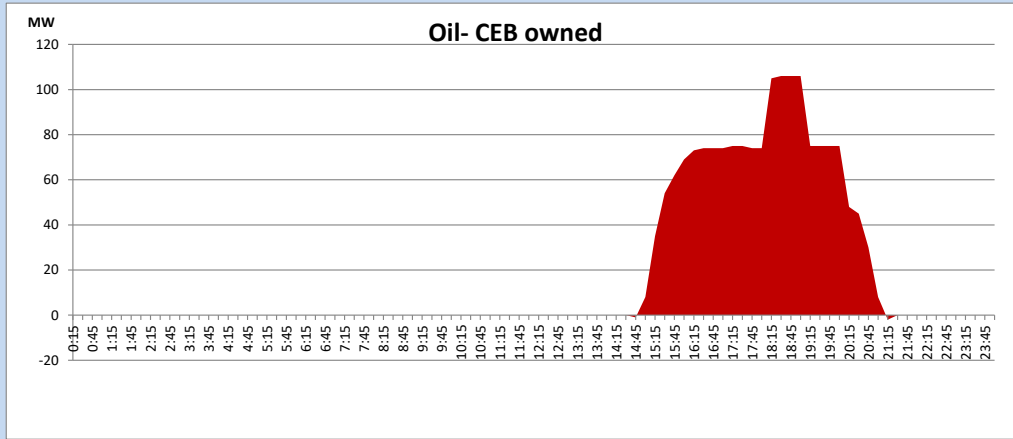
Coal Generation during

November 15, 2023



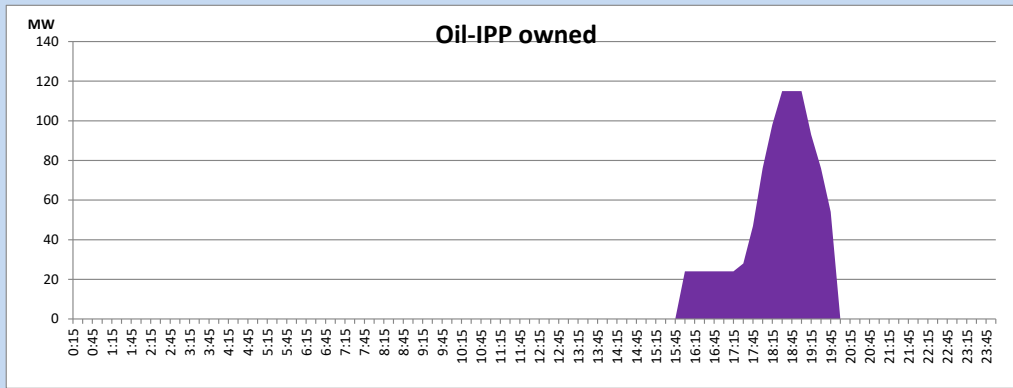
CEB Oil Plant Generation during

November 15, 2023



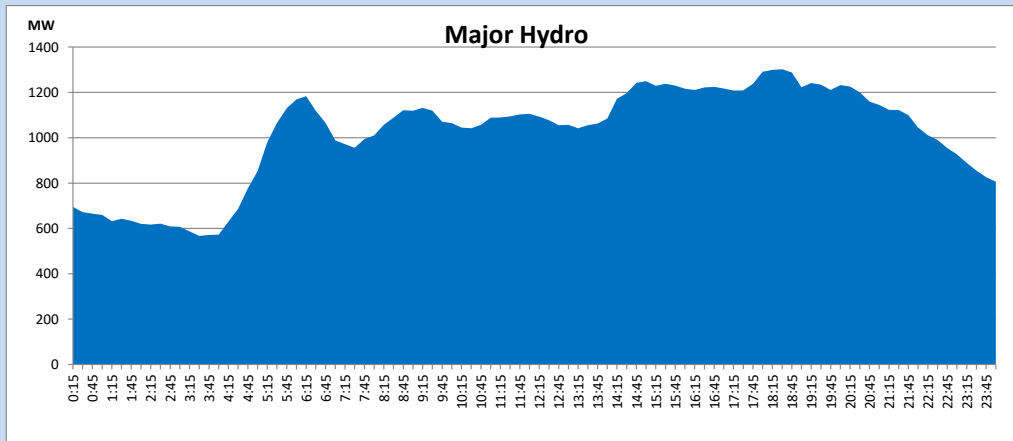
IPP Oil Plant Generation during

November 15, 2023



Major Hydro Generation during

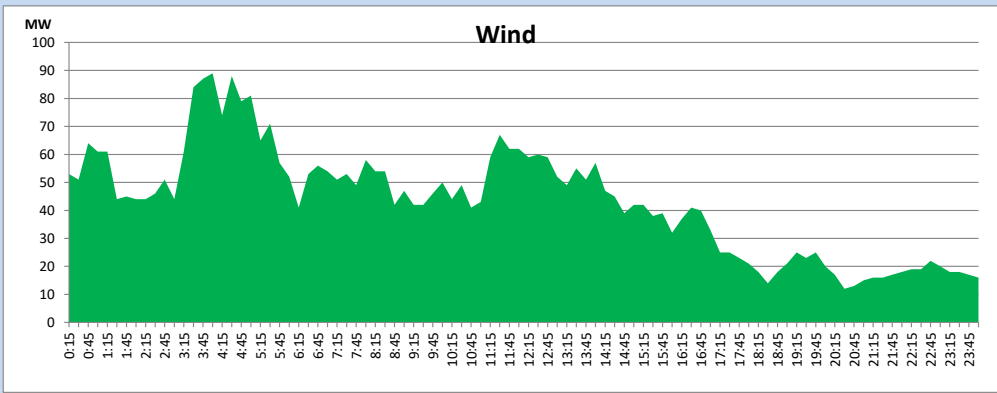
November 15, 2023



Wind Generation during

November 15, 2023

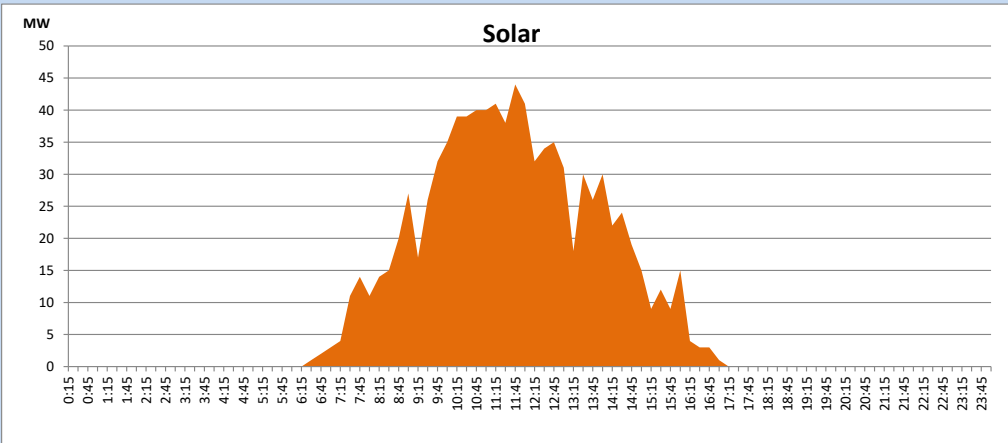
Based on Telemetered Power Stations only



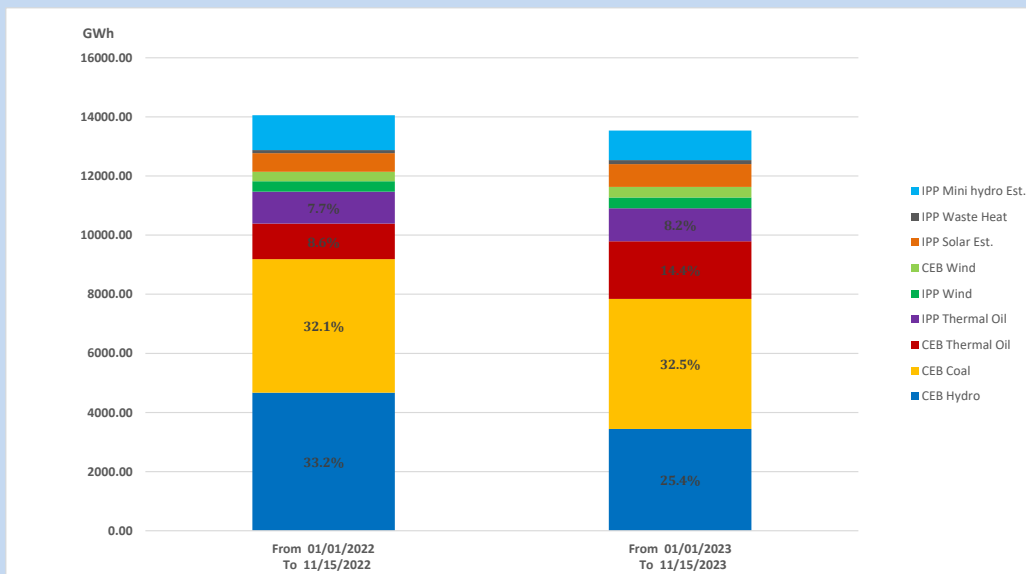
Solar Generation during

November 15, 2023

Based on Telemetered Power Stations only



15. Cumulative Dispatch Comparison with Last Year



Cumulative dispatch

From 01/01/2022 To 11/15/2022

14057 GWh

From 01/01/2023 To 11/15/2023

13538 GWh

The above figures are including contribution from roof top solar, non telemetered solar and mini hydro plants (figures have been adjusted based on the data from the CEB monthly review reports.)

Thermal Plant Fuel types**Table 08**

Power Station	Primary Fuel
CEB Thermal	
Sapugaskanda 1	Heavy Fuel
Sapugaskanda 2	Heavy Fuel
Kelanitissa Small Gas Turbines	Auto Diesel
GT 7 - Kelanitissa	Auto Diesel
Kelanitissa CCY	Naphtha or Diesel
Lakvijaya 1	Coal
Lakvijaya 2	Coal
Lakvijaya 3	Coal
Uthuru Janani	Heavy Fuel
Barge CEB	Heavy Fuel
KCCPS -2	Auto Diesel

Power Station	Primary Fuel
Private Thermal	
West Coast	Auto Diesel / Heavy Fuel
ACE Matara	Heavy Fuel
ACE Embilipitiya	Heavy Fuel

Major Incidents reported during the day

November 15, 2023

- 1) LVPS Unit 03 synchronized at 05:31hrs and reached 60MW (net) by 06:00hrs(16.11.2023).