

# Generation and Reservoirs Statistics

November 14, 2023



**PUBLIC UTILITIES COMMISSION OF SRI LANKA**

## 1. Daily Generation Mix in MWh

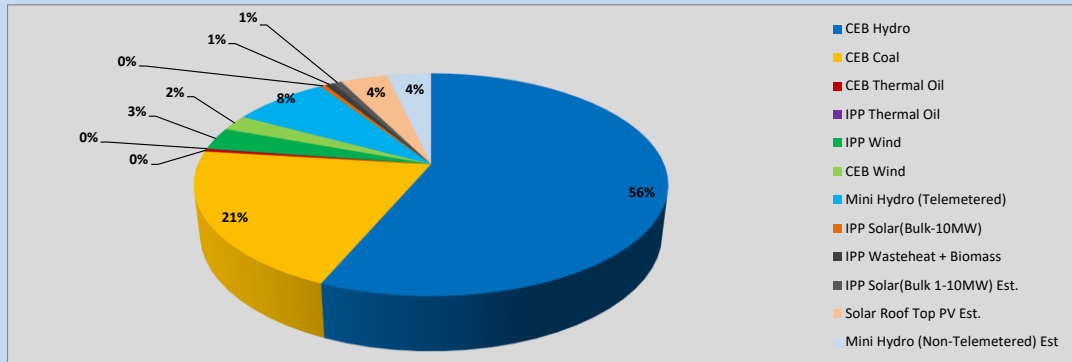


Table 01

	Generation (MWh)
CEB Hydro	24,077
CEB Coal	8,767
CEB Thermal Oil	170
IPP Thermal Oil	22
IPP Wind	1,388
CEB Wind	978
Mini Hydro (Telemetered)	3,340
IPP Solar (Bulk)	191
IPP Waste heat + Biomass	288
<b>Total Generation (Excluding estimated figures)</b>	<b>39,221</b>
* Estimated unserved energy	0
* Estimated Mini Hydro (Non telemetered)	1530
* Estimated IPP Solar PV (Bulk 1-10MW)	304
* Estimated Solar Roof Top PV	1640
<b>Total Generation (Including estimated figures)</b>	<b>42,695</b>

\* Estimated figures of CEB generation report

Table 02

	Installed Capacity (MW)
CEB Hydro	1409
CEB Coal	810
CEB Thermal Oil	781
IPP Thermal Oil (West Coast, ACE Matara and ACE Embilipitiya)	387
IPP Wind	148
CEB Wind	100
Mini Hydro	422
IPP Waste heat + Biomass	50
IPP Solar	136
Rooftop Solar (Ordinary)	277
Rooftop Solar (LT Bulk)	263
Rooftop Solar (HT Bulk)	70

Data Source - Monthly Review Report [Aug-2023]

## 2. Cumulative Dispatch

Following data excludes the contribution from roof top solar, non telemetered solar and mini hydro plants

Table 03 - Current Month

Category	Dispatch (GWh)	
CEB Hydro	316	56.67%
CEB Coal	126	22.66%
CEB Thermal Oil	3	0.57%
IPP Thermal	1	0.17%
SPP Wind	4	0.75%
CEB Wind	5	0.81%
Mini Hydro *	68	12.23%
IPP Solar *	30	5.46%
IPP Waste heat + BMP	4	0.69%
<b>Total</b>	<b>558</b>	

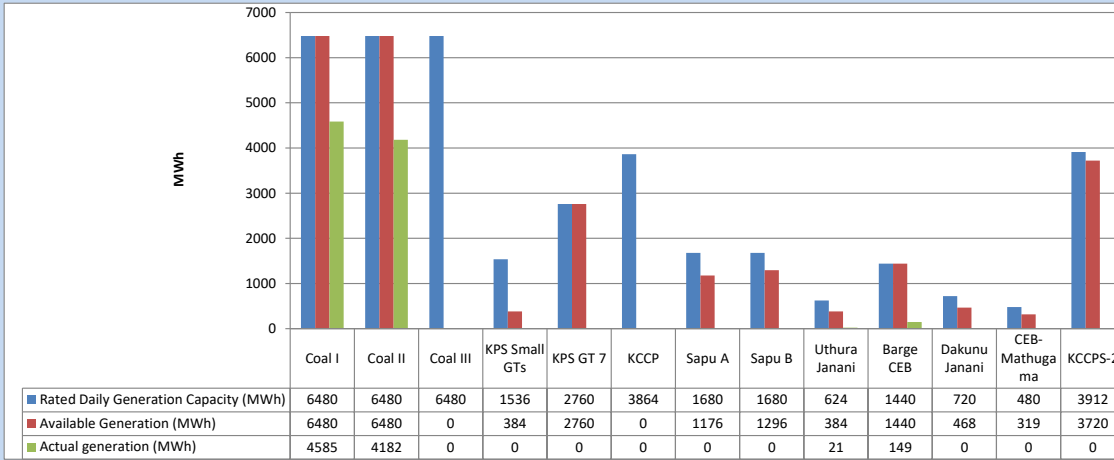
Table 04 - Current Year

Category	Dispatch (GWh)	
CEB Hydro	3,418	25.33%
CEB Coal	4,392	32.55%
CEB Thermal Oil	1,948	14.44%
IPP Thermal	1,115	8.26%
SPP Wind	369	2.73%
CEB Wind	357	2.64%
Mini Hydro *	995	7.37%
IPP Solar *	768	5.69%
IPP Waste heat	134	1.00%
<b>Total</b>	<b>13,495</b>	

\*Including estimated contribution from non telemetered plants

### 3. CEB owned Thermal Plant Dispatch

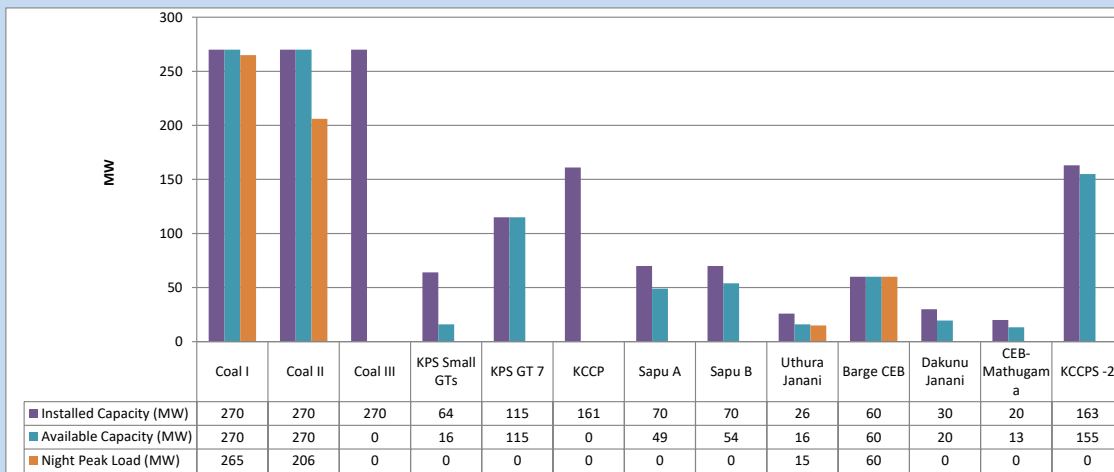
November 14, 2023



Available Generation is estimated based on plant availability at 6.00am on

November 15, 2023

### 4. CEB owned Thermal Plant Loading at the Night Peak

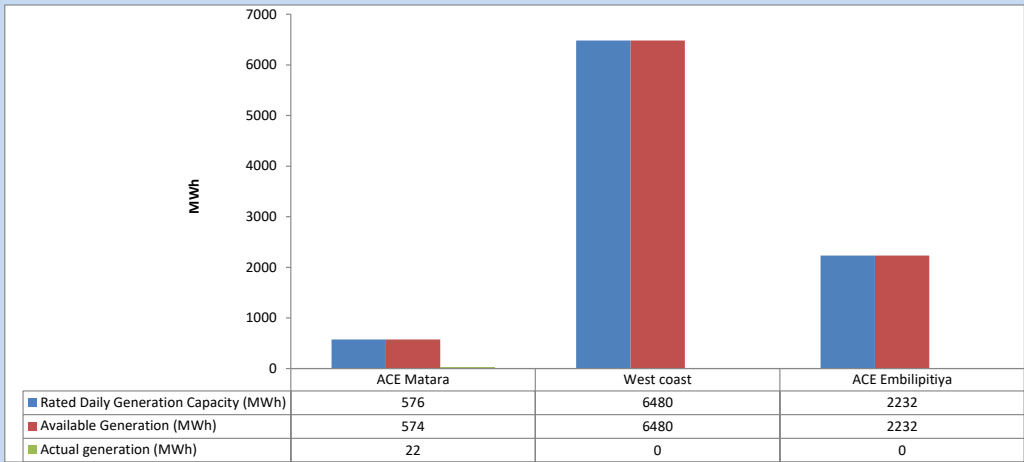


Plant availability is recorded at 6.00 am on

November 15, 2023

### 5. IPP owned Thermal Plant Dispatch

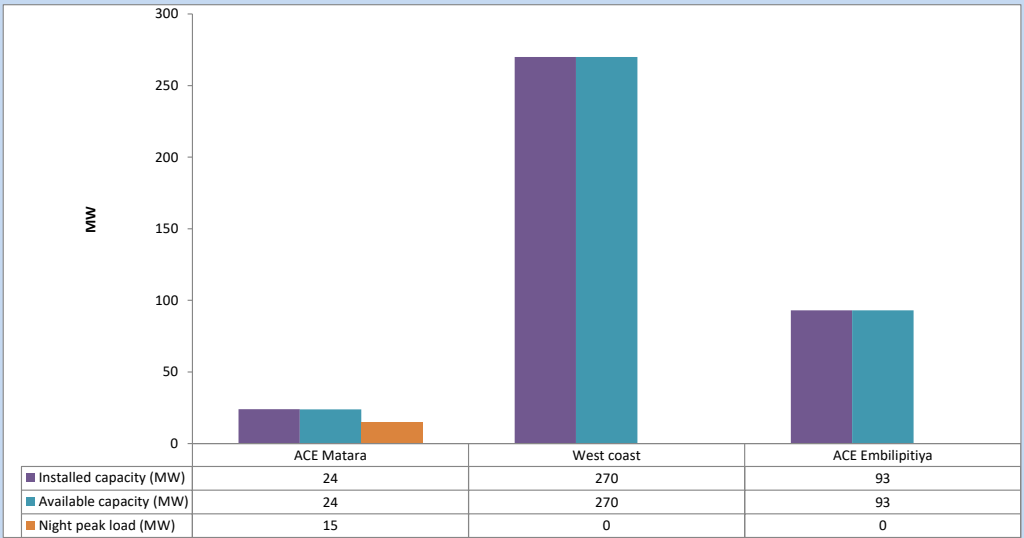
November 14, 2023



Available Generation is estimated based on plant availability at 6.00am on

November 15, 2023

### 6. IPP owned Thermal Plant Loading at the Night Peak

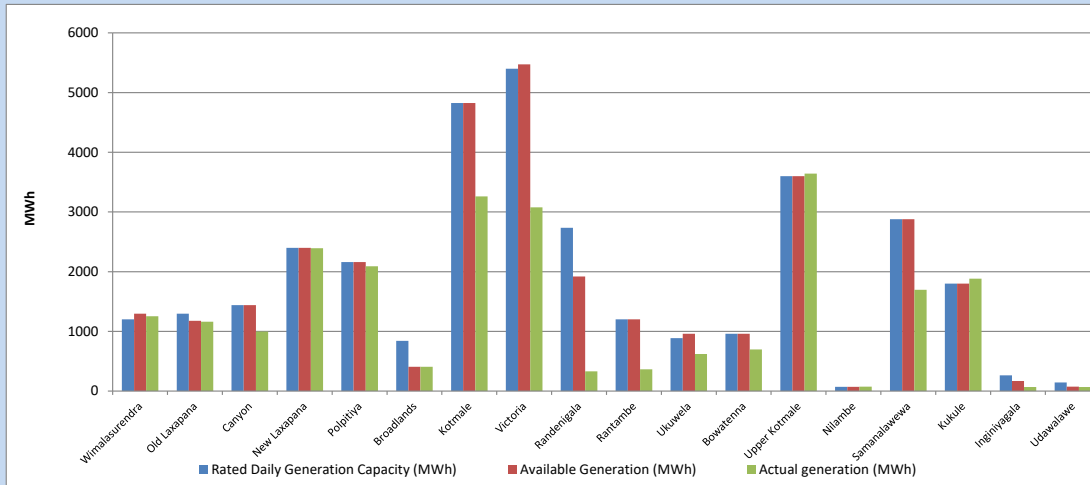


Plant availability is recorded at 6.00 am on

November 15, 2023

### 7. Major Hydro Plant Dispatch

November 14, 2023

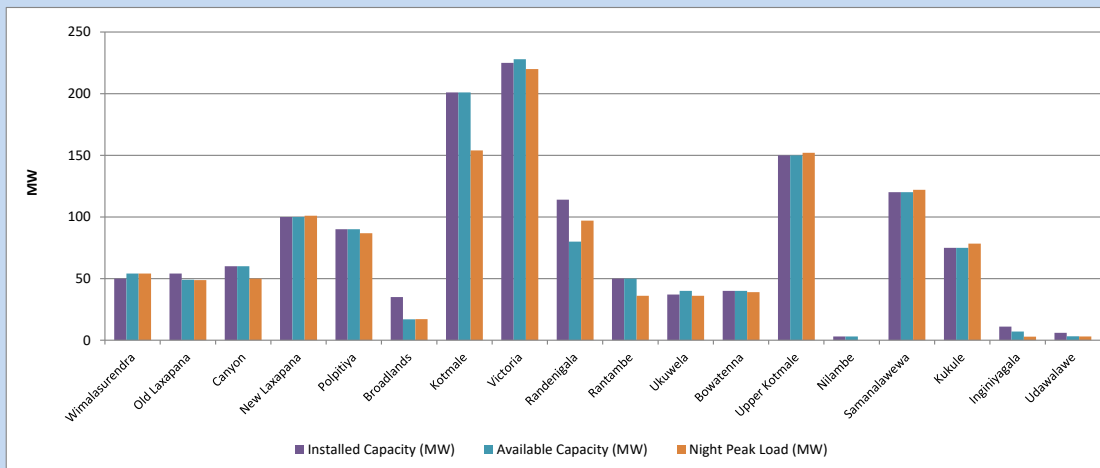


Available Generation is estimated based on plant availability at 6.00am on November 15, 2023  
Broadlands power plant is operating in the Commissioning Stage

November 15, 2023

### 8. Major Hydro Plant Loading at Night Peak

November 14, 2023



Plant availability is recorded at 6.00 am on November 15, 2023  
Broadlands power plant is operating in the Commissioning Stage

November 15, 2023

## 9. Summary of Major Plant performance

Table 05

Plant	Installed Capacity	Plant Availability	Night peak Load	Plant Dispatch
	(MW)	(MW)	(MW)	(MWh)
Wimalasurendra	50	54	54	1,253
Old Laxapana	54	49	49	1,162
Canyon	60	60	50	998
New Laxapana	100	100	101	2,392
Polpitiya	90	90	87	2,090
Broadlands	35	17	17	408
Kotmale	201	201	154	3,260
Victoria	225	228	220	3,076
Randenigala	114	80	97	329
Rantambe	50	50	36	364
Ukuwela	37	40	36	620
Bowatenna	40	40	39	697
Upper Kotmale	150	150	152	3,641
Nilambe	3	3	0	74
Samanalawewa	120	120	122	1,695
Kukule	75	75	78	1,882
Inginiyagala	11	7	3	69
Udawalawe	6	3	3	67
Puttalam Coal I	270	270	265	4,585
Puttalam Coal II	270	270	206	4,182
Puttalam Coal III	270	0	0	0
KPS Small GTs	64	16	0	0
KPS GT 7	115	115	0	0
KCCP	161	0	0	0
Sapugaskanda A	70	49	0	0
Sapugaskanda B	70	54	0	0
Uthura Janani	26	16	15	21
Barge CEB	60	60	60	149
CEB-Hambantota	30	20	0	0
CEB-Mathugama	20	13	0	0
ACE Matara	24	24	15	22
Asia Power	50	0	0	0
KCCPS -2	163	155	0	0
West Coast	270	270	0	0
Nothern Power	36	0	0	0
ACE Embilipitiya	93	93	0	0
<b>Total</b>	<b>3,483</b>	<b>2,792</b>	<b>2,116</b>	<b>39,221</b>

Plant availability is the availability recorded at 6 am on

November 15, 2023

### 10. Contribution to the Night Peak in MW

November 14, 2023

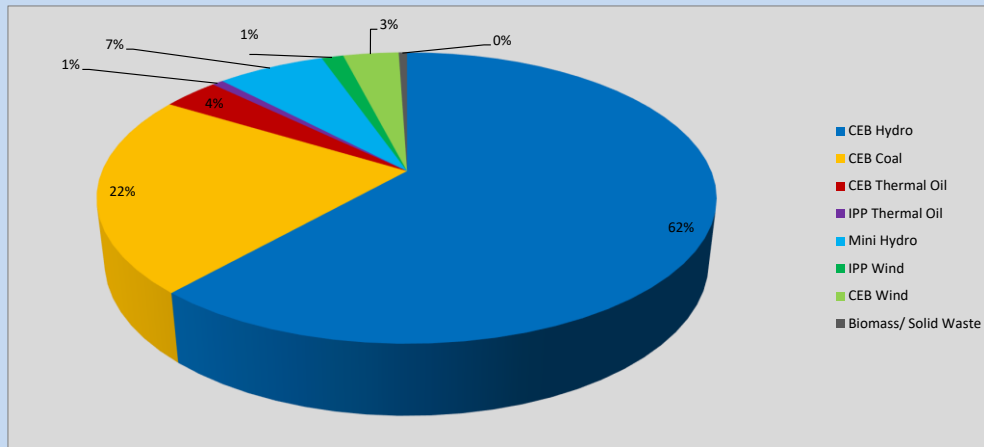


Table 06

CEB Hydro	1311	MW
CEB Coal	471	MW
CEB Thermal Oil	75	MW
IPP Thermal Oil	15	MW
Mini Hydro (Telemetered)	143	MW
IPP Wind	29	MW
CEB Wind	73.7	MW
Biomass/ Solid Waste	11	MW

#### Recorded Peak Demand Data

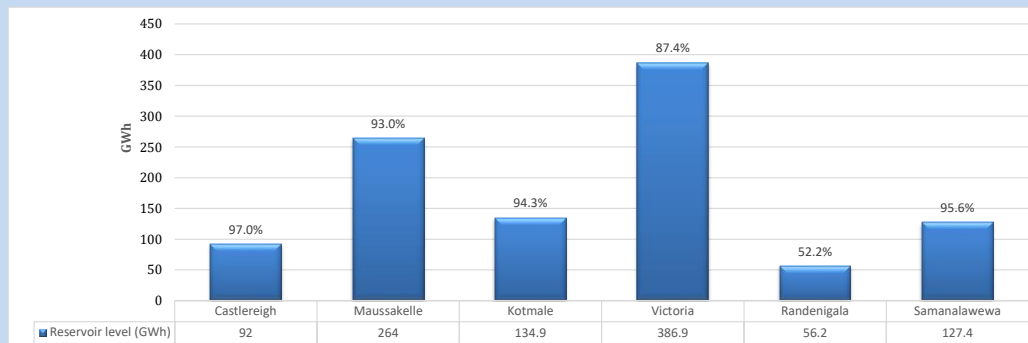
Table 07

Night Peak*	2,129	MW
Day Peak Maximum Demand	1,833	MW
Day Peak Minimum Demand	1,585	MW
Off Peak Minimum Demand	1,115	MW

Above figures are excluding contribution from roof top solar, non telemetered solar and mini hydro plants

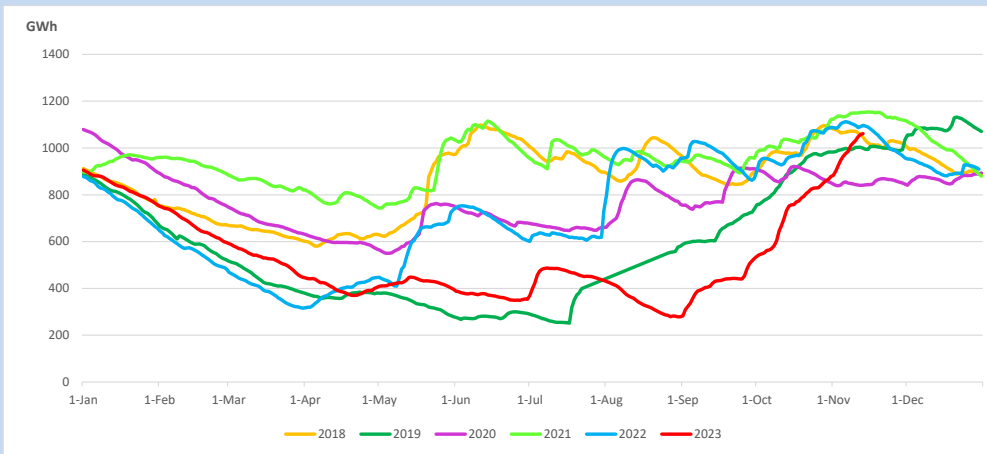
#### Reservoir Levels -

as at 06.00 Hr on November 15, 2023

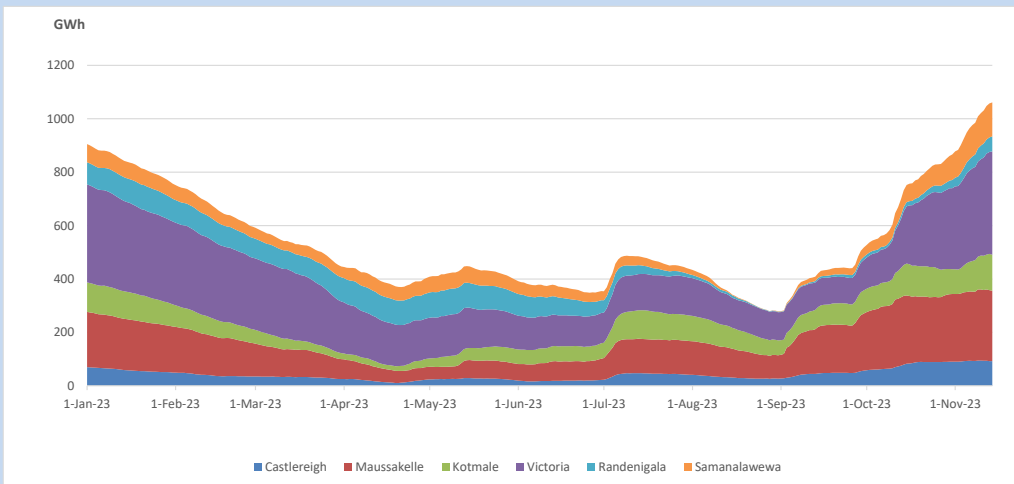


Total Reservoir Level 1061.4 GWh  
 % of Total capacity 88.1%

### 11. Comparison of Total Reservoir Storage Levels with Past Years

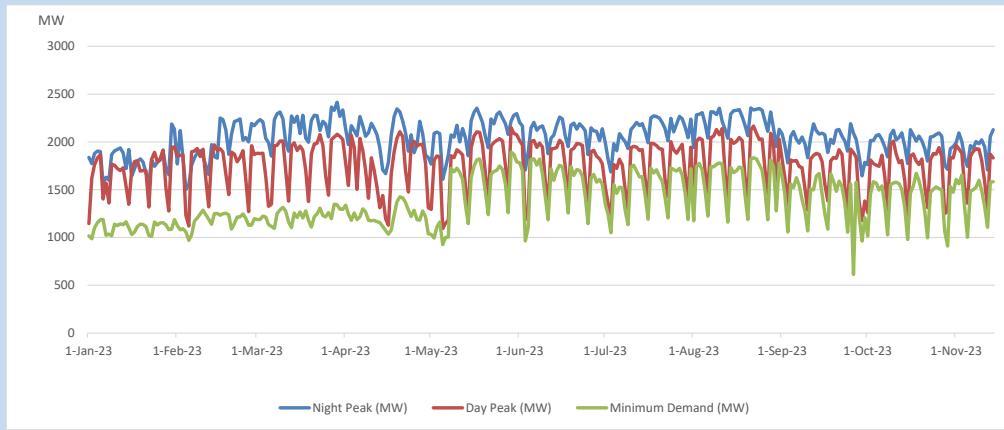


### 12. Variation of Major Hydro Reservoir Levels in the current year (GWh)





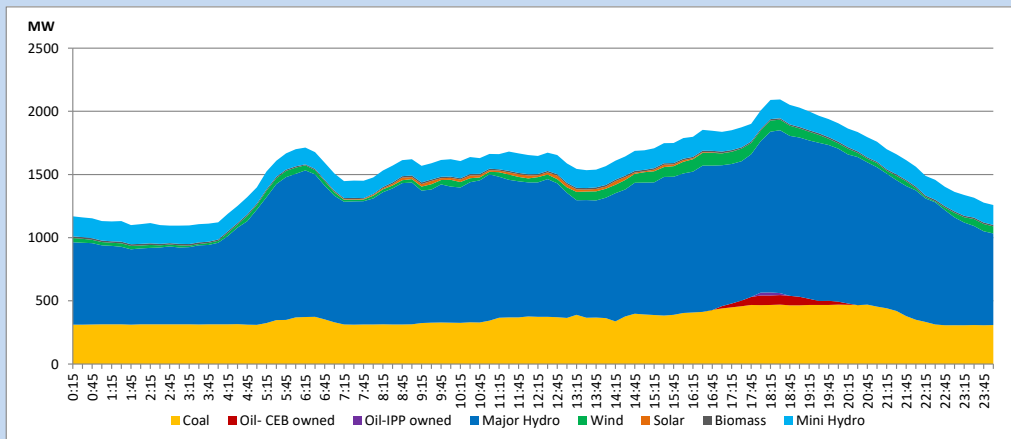
### 13. Variation of Demand during the current year



The above figures are excluding contribution from roof top solar, non telemetered solar and mini hydro plants

### 14. Daily Load Curve

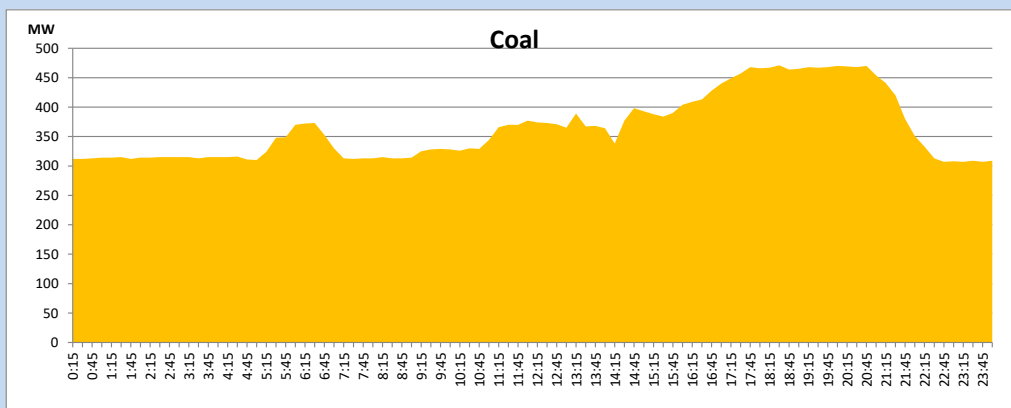
November 14, 2023



Solar and wind data is based on Telemetered Power Stations only

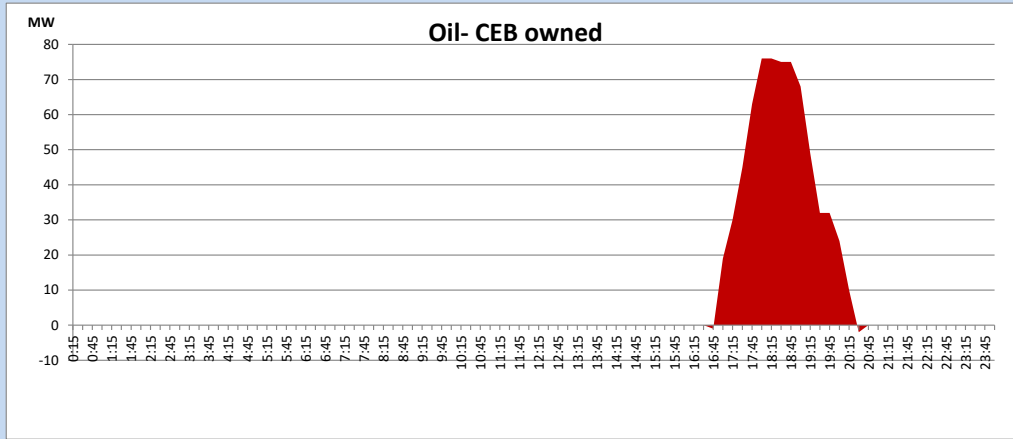
### Coal Generation during

November 14, 2023



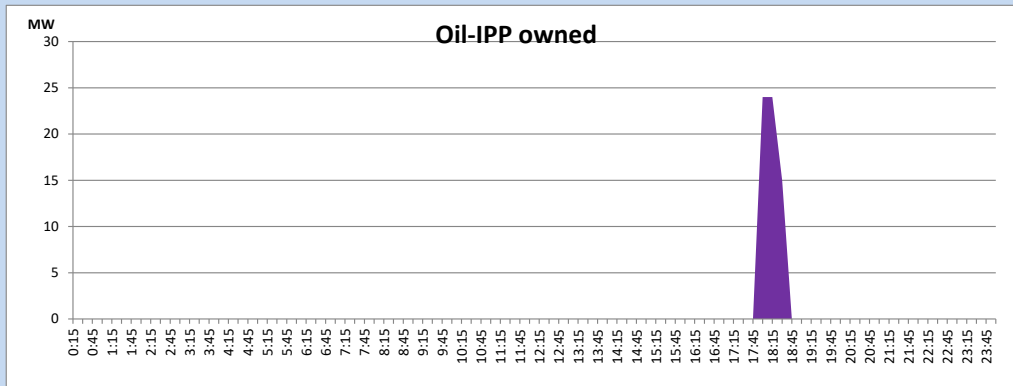
CEB Oil Plant Generation during

November 14, 2023



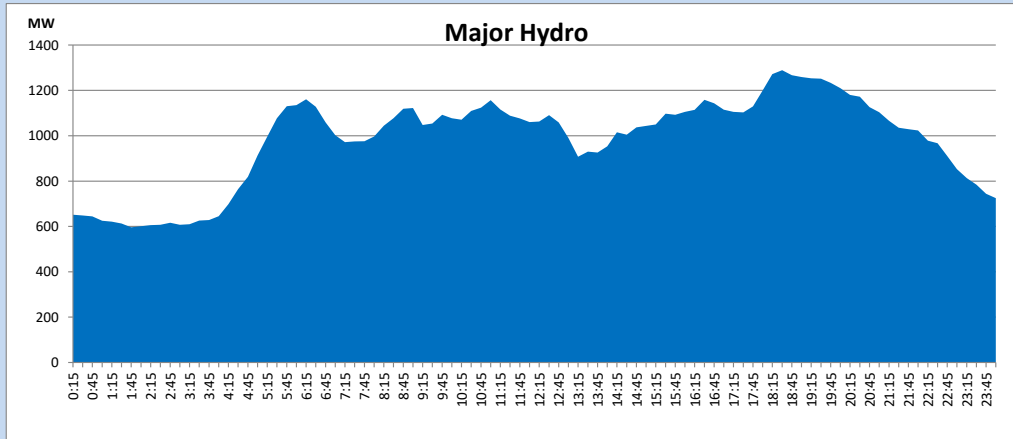
IPP Oil Plant Generation during

November 14, 2023



Major Hydro Generation during

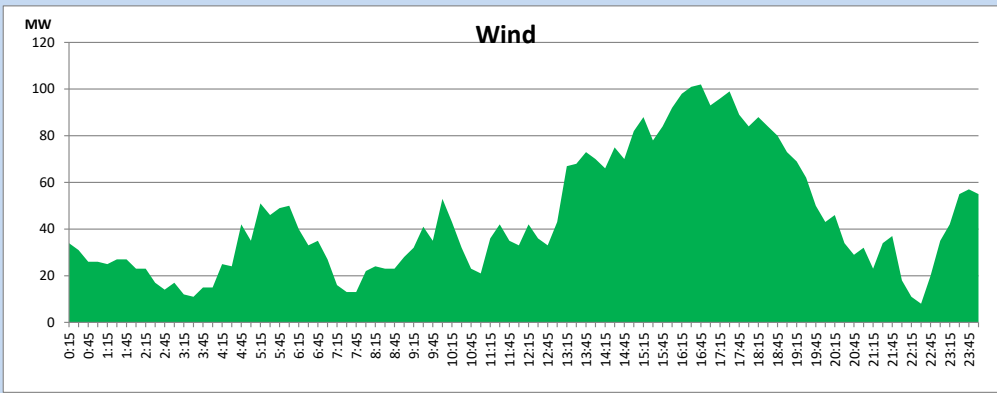
November 14, 2023



## Wind Generation during

November 14, 2023

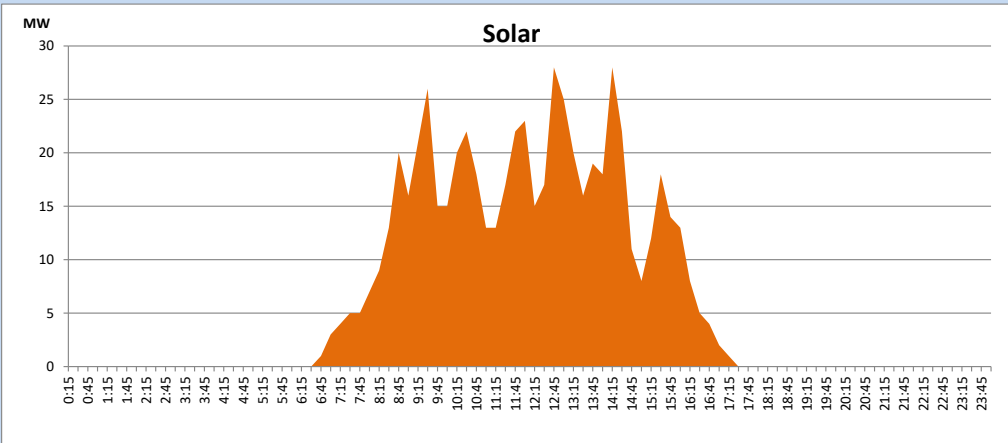
Based on Telemetered Power Stations only



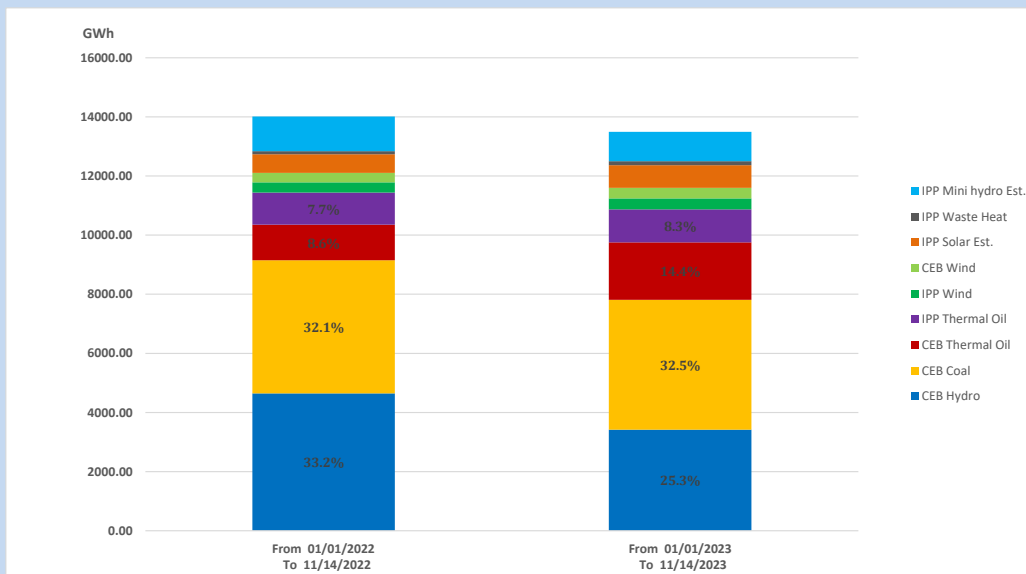
## Solar Generation during

November 14, 2023

Based on Telemetered Power Stations only



## 15. Cumulative Dispatch Comparison with Last Year



### Cumulative dispatch

From 01/01/2022 To 11/14/2022

14015 GWh

From 01/01/2023 To 11/14/2023

13495 GWh

The above figures are including contribution from roof top solar, non telemetered solar and mini hydro plants (figures have been adjusted based on the data from the CEB monthly review reports.)

Thermal Plant Fuel types

Table 08

Power Station	Primary Fuel
CEB Thermal	
Sapugaskanda 1	Heavy Fuel
Sapugaskanda 2	Heavy Fuel
Kelanitissa Small Gas Turbines	Auto Diesel
GT 7 - Kelanitissa	Auto Diesel
Kelanitissa CCY	Naphtha or Diesel
Lakvijaya 1	Coal
Lakvijaya 2	Coal
Lakvijaya 3	Coal
Uthuru Janani	Heavy Fuel
Barge CEB	Heavy Fuel
KCCPS -2	Auto Diesel

Power Station	Primary Fuel
Private Thermal	
West Coast	Auto Diesel / Heavy Fuel
ACE Matara	Heavy Fuel
ACE Embilipitiya	Heavy Fuel

Major Incidents reported during the day

November 14, 2023

- 1) Upper Kothmale pond spilling stopped at 23:59hrs