

Generation and Reservoirs Statistics

November 13, 2023



PUBLIC UTILITIES COMMISSION OF SRI LANKA

1. Daily Generation Mix in MWh

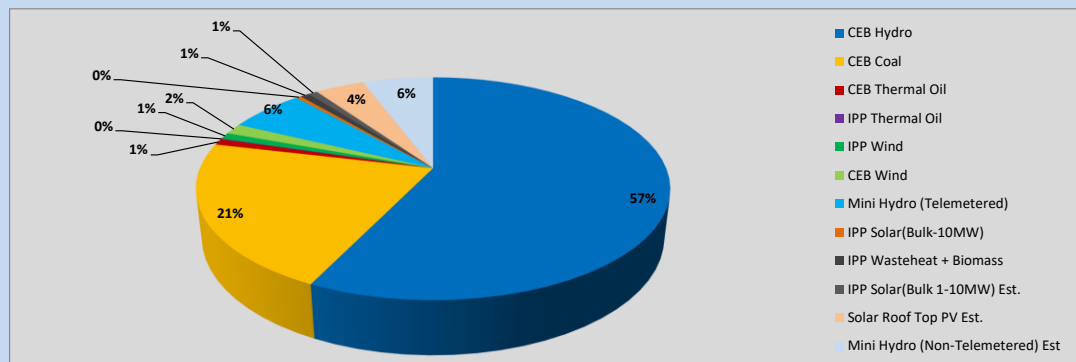


Table 01

	Generation (MWh)
CEB Hydro	23,327
CEB Coal	8,763
CEB Thermal Oil	357
IPP Thermal Oil	46
IPP Wind	384
CEB Wind	630
Mini Hydro (Telemetered)	2,531
IPP Solar (Bulk)	163
IPP Waste heat + Biomass	300
Total Generation (Excluding estimated figures)	36,501
* Estimated unserved energy	0
* Estimated Mini Hydro (Non telemetered)	2339
* Estimated IPP Solar PV (Bulk 1-10MW)	304
* Estimated Solar Roof Top PV	1640
Total Generation (Including estimated figures)	40,784

* Estimated figures of CEB generation report

Table 02

	Installed Capacity (MW)
CEB Hydro	1409
CEB Coal	810
CEB Thermal Oil	781
IPP Thermal Oil (West Coast, ACE Matara and ACE Embilipitiya)	387
IPP Wind	148
CEB Wind	100
Mini Hydro	422
IPP Waste heat + Biomass	50
IPP Solar	136
Rooftop Solar (Ordinary)	277
Rooftop Solar (LT Bulk)	263
Rooftop Solar (HT Bulk)	70

Data Source - Monthly Review Report [Aug-2023]

2. Cumulative Dispatch

Following data excludes the contribution from roof top solar, non telemetered solar and mini hydro plants

Table 03 - Current Month

Category	Dispatch (GWh)	
CEB Hydro	292	56.69%
CEB Coal	118	22.84%
CEB Thermal Oil	3	0.58%
IPP Thermal	1	0.18%
SPP Wind	3	0.54%
CEB Wind	4	0.68%
Mini Hydro *	63	12.29%
IPP Solar *	28	5.50%
IPP Waste heat + BMP	4	0.69%
Total	515	

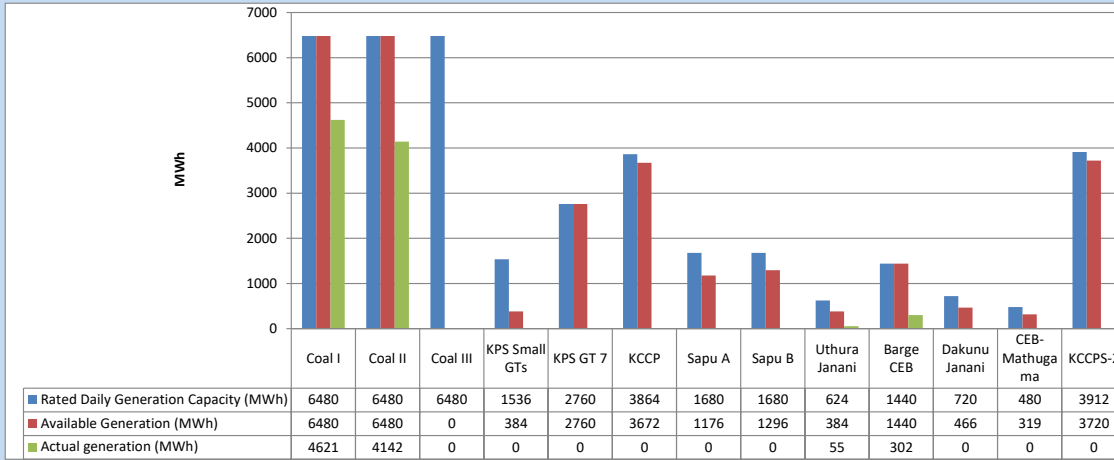
Table 04 - Current Year

Category	Dispatch (GWh)	
CEB Hydro	3,394	25.23%
CEB Coal	4,383	32.58%
CEB Thermal Oil	1,948	14.48%
IPP Thermal	1,115	8.29%
SPP Wind	367	2.73%
CEB Wind	356	2.64%
Mini Hydro *	990	7.36%
IPP Solar *	765	5.69%
IPP Waste heat	134	1.00%
Total	13,452	

*Including estimated contribution from non telemetered plants

3. CEB owned Thermal Plant Dispatch

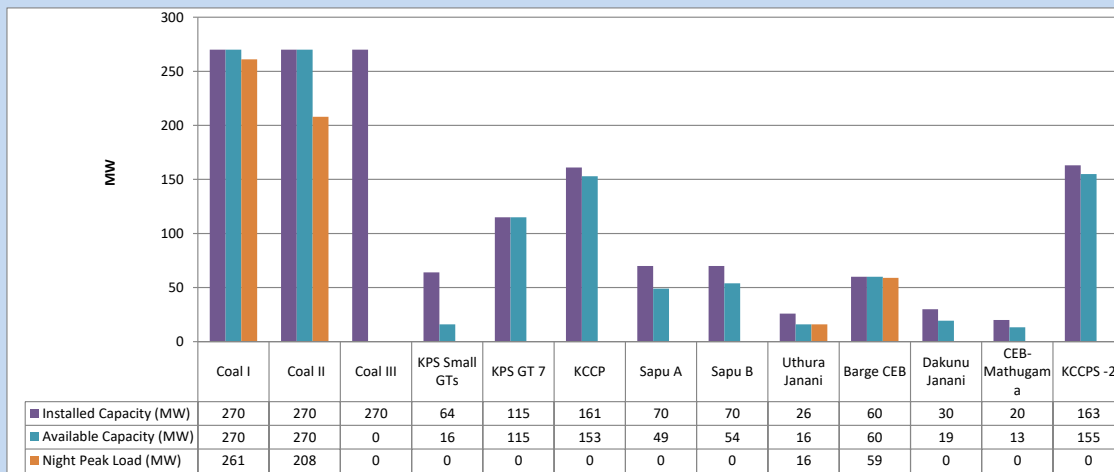
November 13, 2023



Available Generation is estimated based on plant availability at 6.00am on

November 14, 2023

4. CEB owned Thermal Plant Loading at the Night Peak

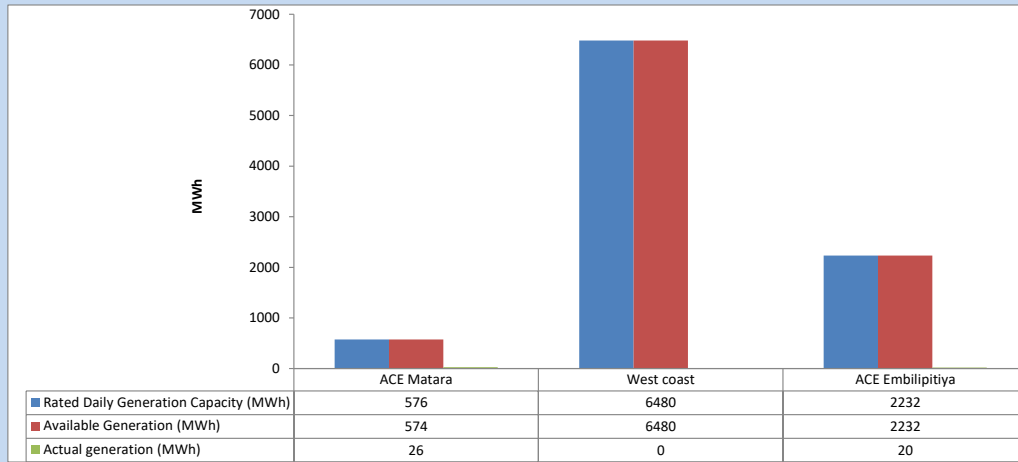


Plant availability is recorded at 6.00 am on

November 14, 2023

5. IPP owned Thermal Plant Dispatch

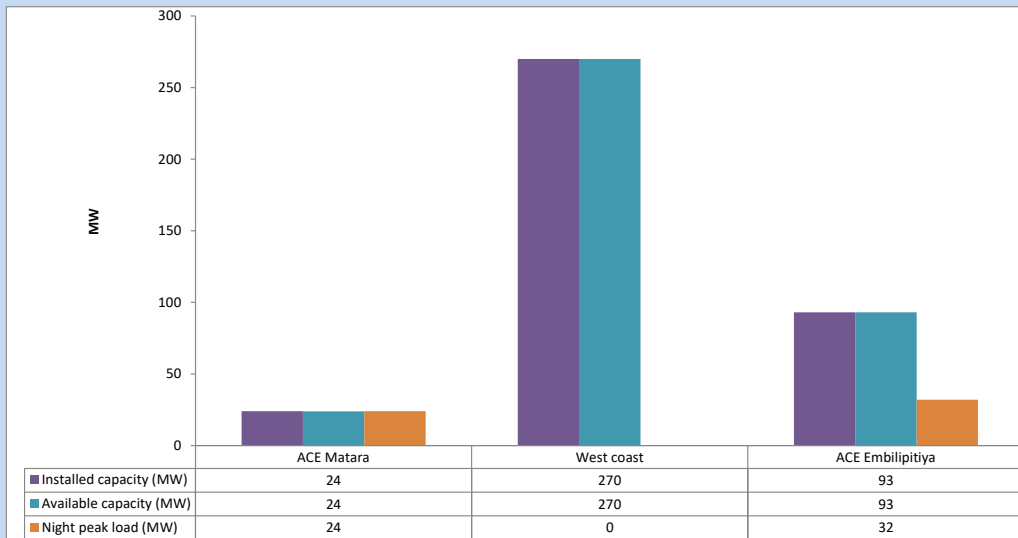
November 13, 2023



Available Generation is estimated based on plant availability at 6.00am on

November 14, 2023

6. IPP owned Thermal Plant Loading at the Night Peak

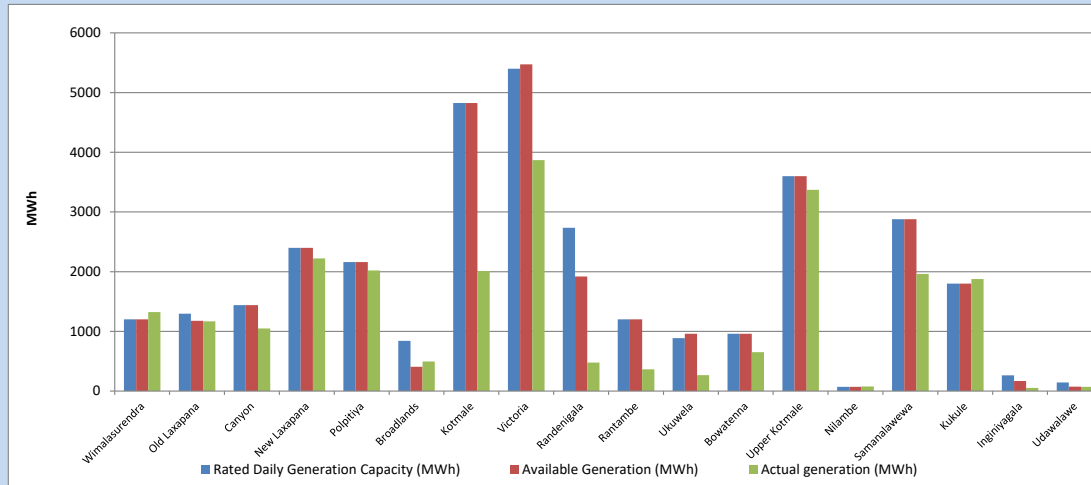


Plant availability is recorded at 6.00 am on

November 14, 2023

7. Major Hydro Plant Dispatch

November 13, 2023

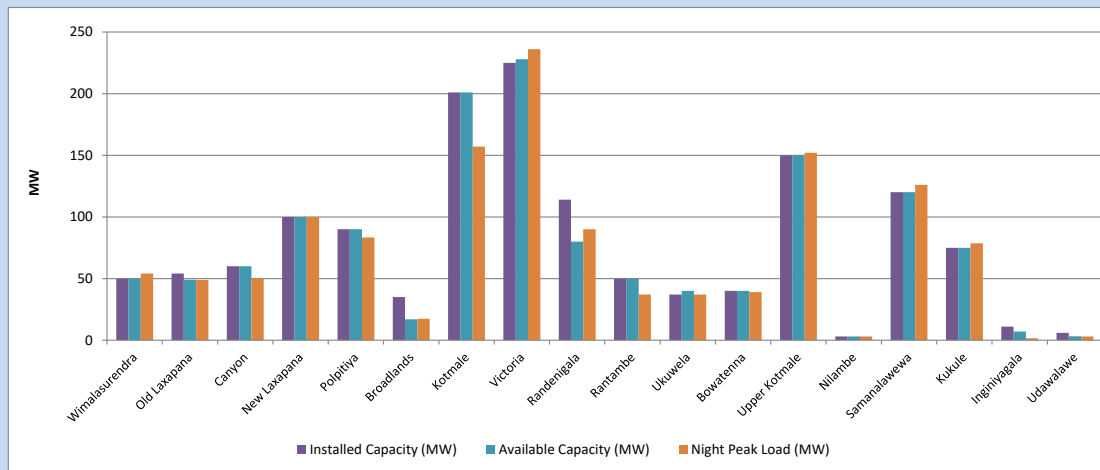


Available Generation is estimated based on plant availability at 6.00am on November 14, 2023
Broadlands power plant is operating in the Commissioning Stage

November 14, 2023

8. Major Hydro Plant Loading at Night Peak

November 13, 2023



Plant availability is recorded at 6.00 am on November 14, 2023
Broadlands power plant is operating in the Commissioning Stage

November 14, 2023

9. Summary of Major Plant performance

Table 05

Plant	Installed Capacity (MW)	Plant Availability (MW)	Night peak Load (MW)	Plant Dispatch (MWh)
Wimalasurendra	50	50	54	1,324
Old Laxapana Canyon	54	49	49	1,169
New Laxapana	60	60	50	1,049
Polpitiya	100	100	100	2,222
Broadlands	90	90	83	2,020
Kotmale	35	17	17	496
Victoria	201	201	157	2,010
Randenigala	225	228	236	3,868
Rantambe	114	80	90	478
Ukuwela	50	50	37	364
Bowatenna	37	40	37	266
Upper Kotmale	40	40	39	650
Nilambe	150	150	152	3,370
Samanalawewa	3	3	3	76
Kukule	120	120	126	1,963
Inginiyagala	75	75	79	1,876
Udawalawe	11	7	2	54
Puttalam Coal I	6	3	3	72
Puttalam Coal II	270	270	261	4,621
Puttalam Coal III	270	270	208	4,142
KPS Small GTs	270	0	0	0
KPS GT 7	64	16	0	0
KCCP	115	115	0	0
Sapugaskanda A	161	153	0	0
Sapugaskanda B	70	49	0	0
Uthura Janani	70	54	0	0
Barge CEB	26	16	16	55
CEB-Hambantota	60	60	59	302
CEB-Mathugama	30	19	0	0
ACE Matara	20	13	0	0
Asia Power	24	24	24	26
KCCPS -2	50	0	0	0
West Coast	163	155	0	0
Nothern Power	270	270	0	0
ACE Embilipitiya	36	0	0	0
Total	93	93	32	20
Total	3,483	2,941	2,045	36,501

Plant availability is the availability recorded at 6 am on

November 14, 2023

10. Contribution to the Night Peak in MW

November 13, 2023

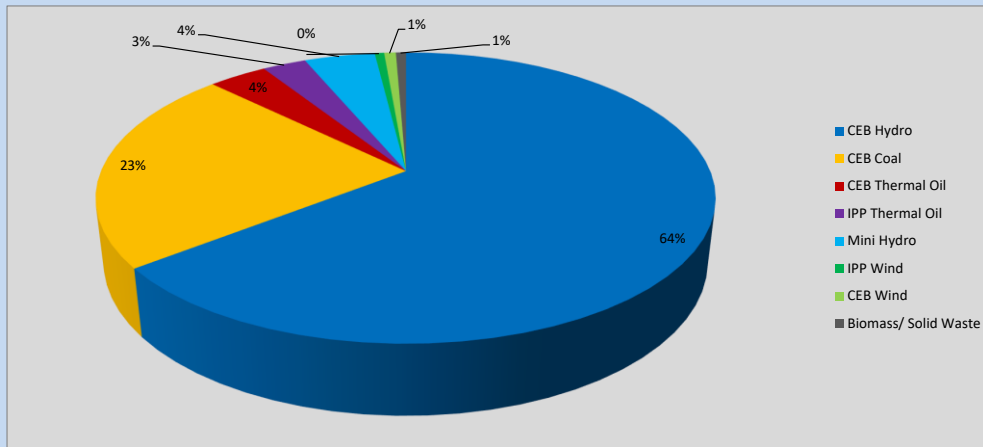


Table 06

CEB Hydro	1326	MW
CEB Coal	469	MW
CEB Thermal Oil	75	MW
IPP Thermal Oil	56	MW
Mini Hydro (Telemetered)	91	MW
IPP Wind	12.1	MW
CEB Wind	15	MW
Biomass/ Solid Waste	13	MW

Recorded Peak Demand Data

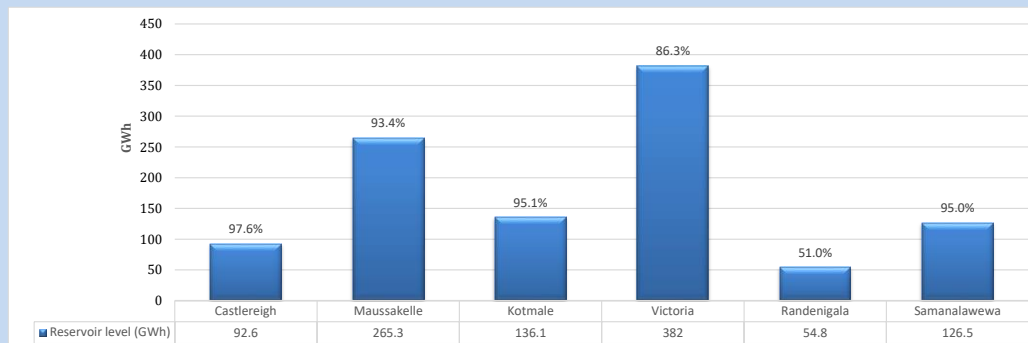
Table 07

Night Peak*	2,057	MW
Day Peak Maximum Demand	1,872	MW
Day Peak Minimum Demand	1,577	MW
Off Peak Minimum Demand	948	MW

Above figures are excluding contribution from roof top solar, non telemetered solar and mini hydro plants

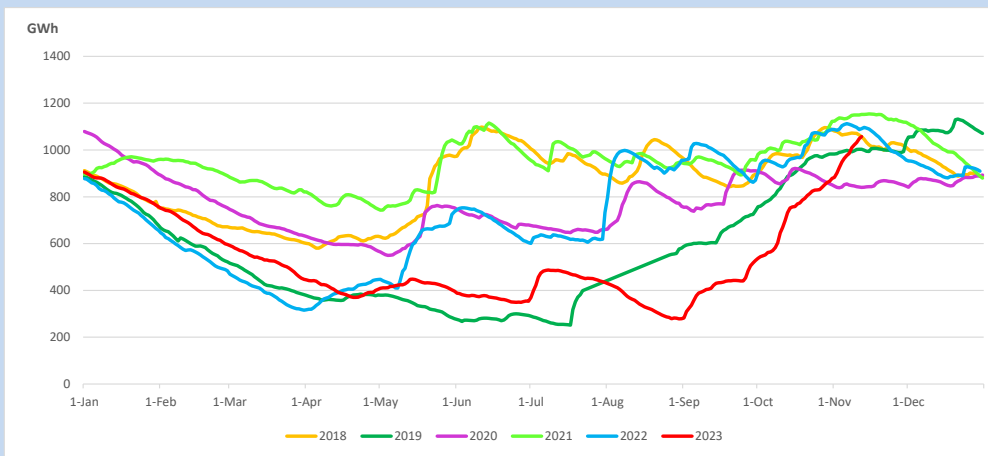
Reservoir Levels -

as at 06.00 Hr on November 14, 2023

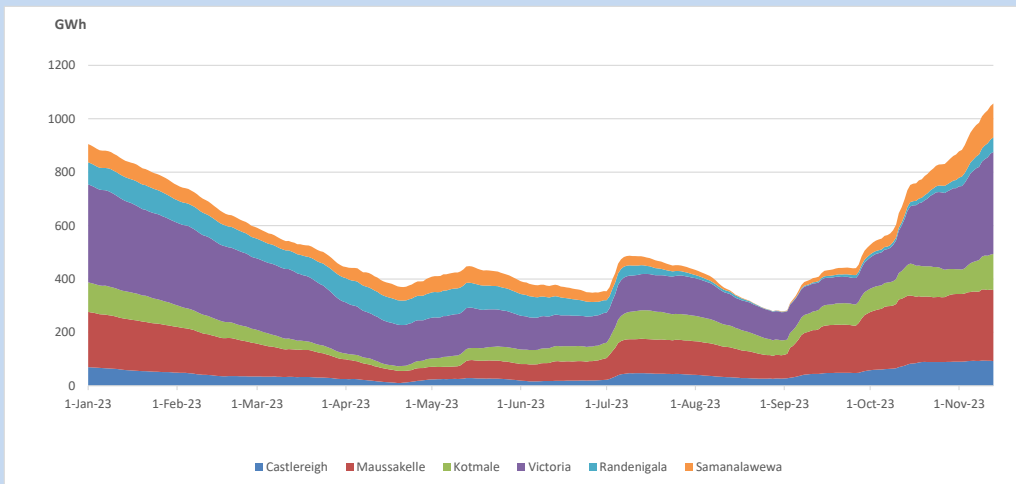


Total Reservoir Level 1057.3 GWh
% of Total capacity 87.7%

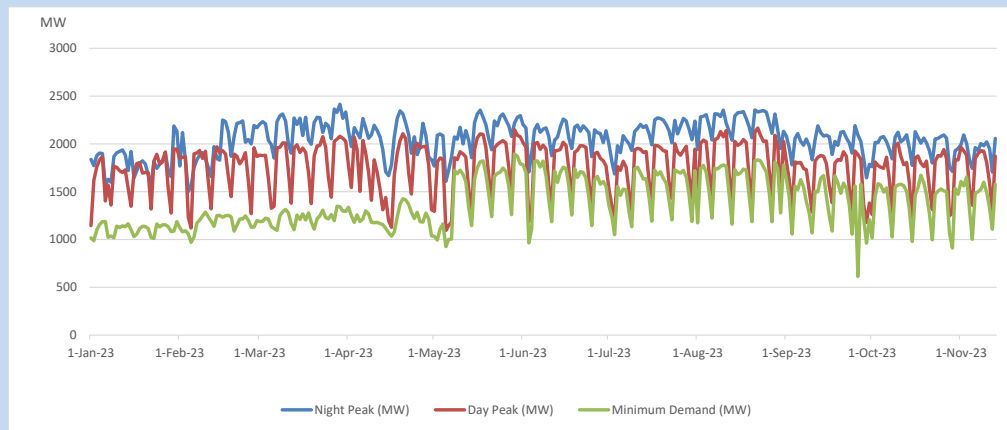
11. Comparison of Total Reservoir Storage Levels with Past Years



12. Variation of Major Hydro Reservoir Levels in the current year (GWh)



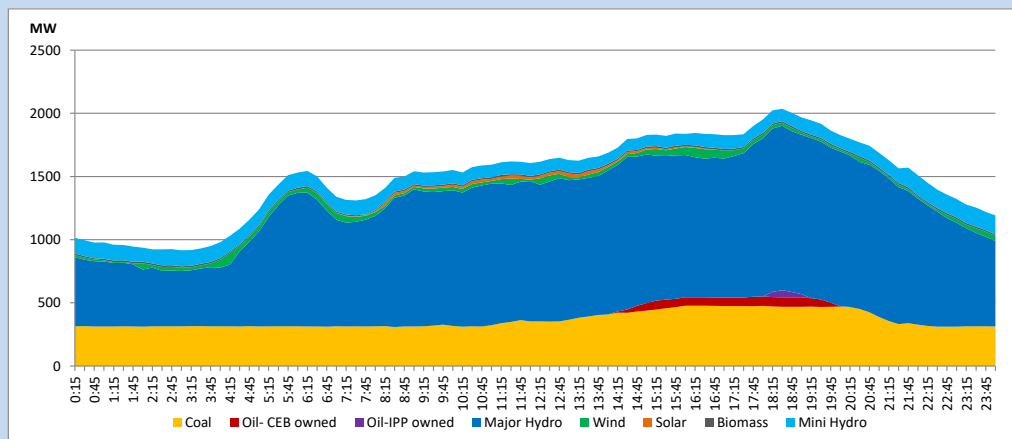
13. Variation of Demand during the current year



The above figures are excluding contribution from roof top solar, non telemetered solar and mini hydro plants

14. Daily Load Curve

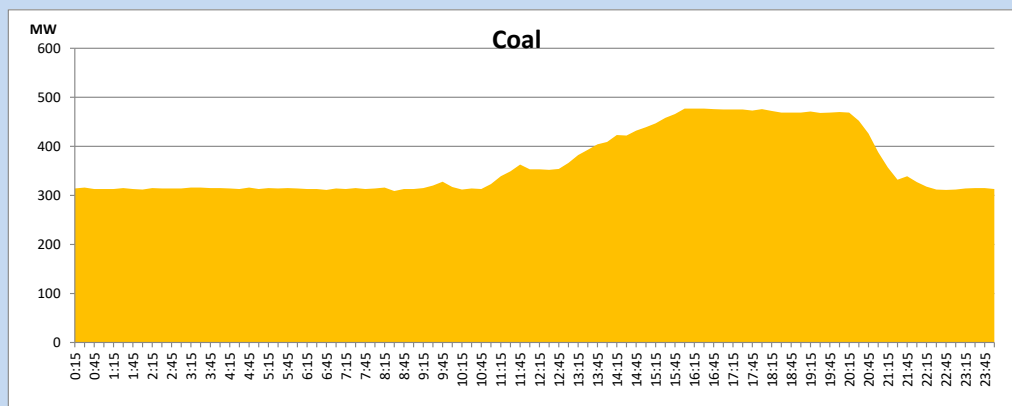
November 13, 2023



Solar and wind data is based on Telemetered Power Stations only

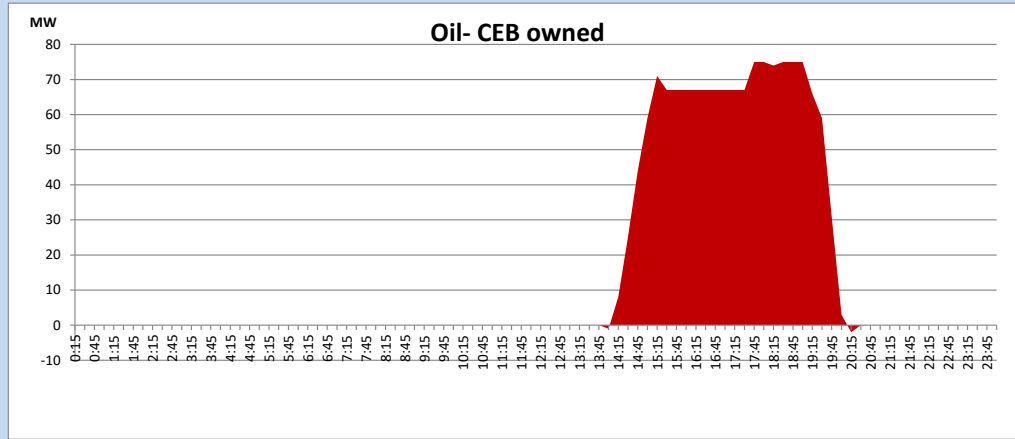
Coal Generation during

November 13, 2023



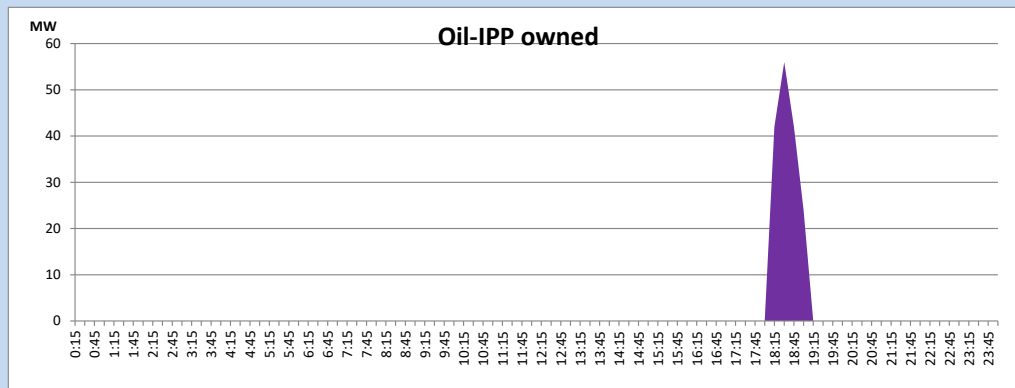
CEB Oil Plant Generation during

November 13, 2023



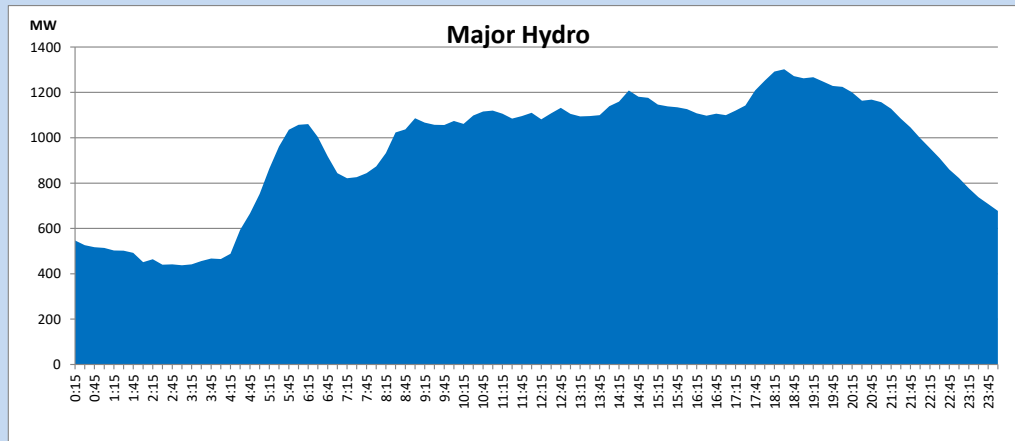
IPP Oil Plant Generation during

November 13, 2023



Major Hydro Generation during

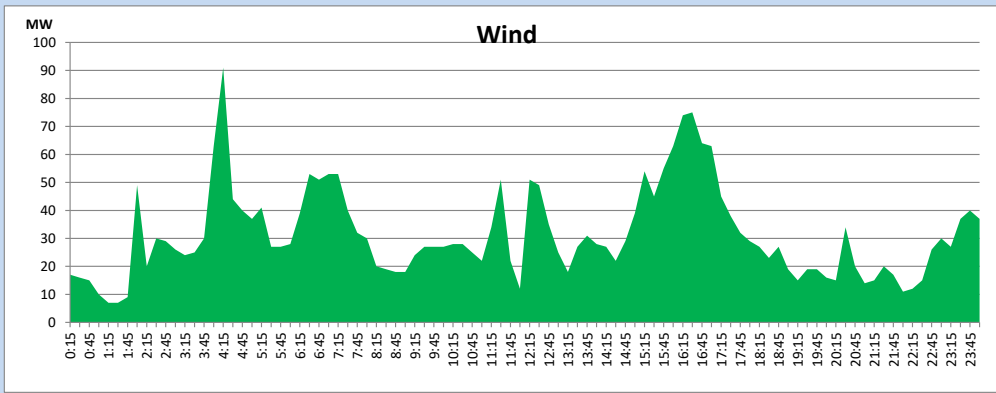
November 13, 2023



Wind Generation during

November 13, 2023

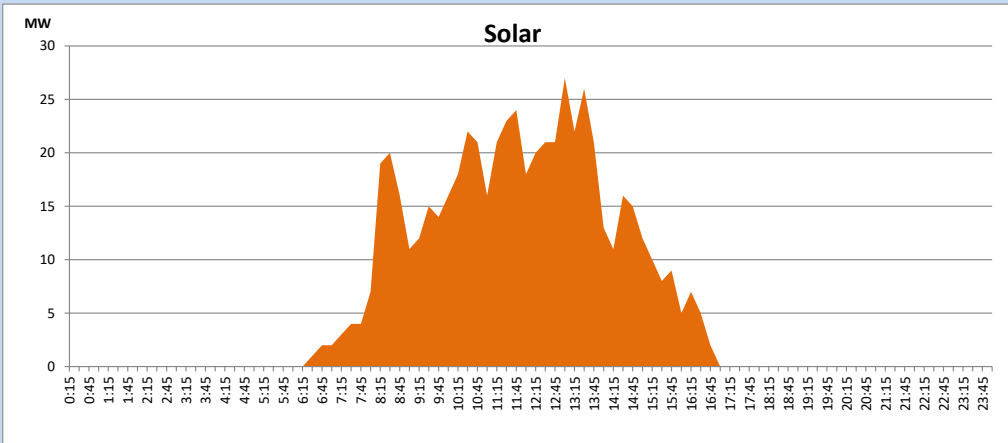
Based on Telemetered Power Stations only



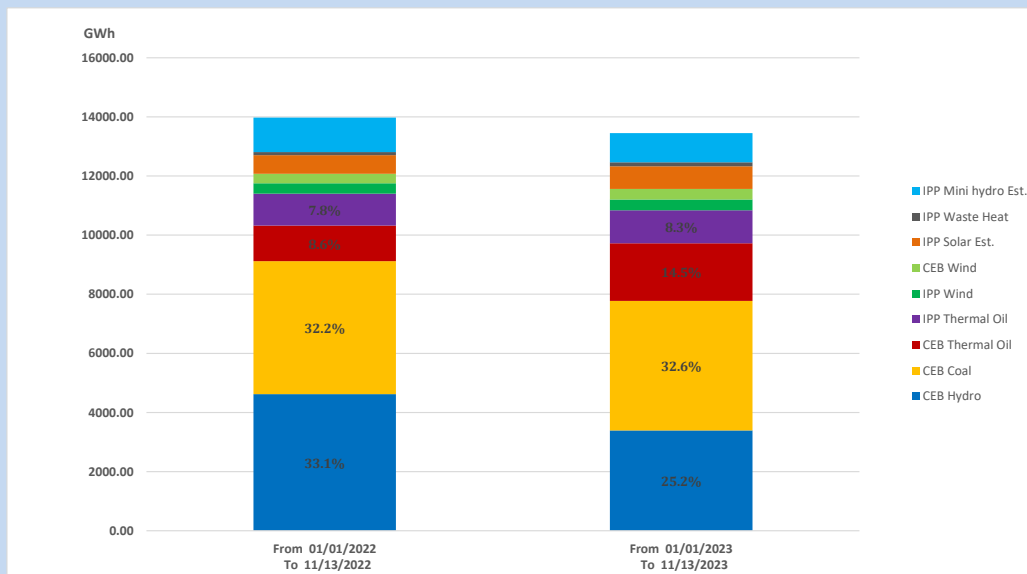
Solar Generation during

November 13, 2023

Based on Telemetered Power Stations only



15. Cumulative Dispatch Comparison with Last Year



Cumulative dispatch
 From 01/01/2022 To 11/13/2022
 From 01/01/2023 To 11/13/2023

13976 GWh
 13452 GWh

The above figures are including contribution from roof top solar, non telemetered solar and mini hydro plants (figures have been adjusted based on the data from the CEB monthly review reports.)

Thermal Plant Fuel types**Table 08**

Power Station	Primary Fuel
CEB Thermal	
Sapugaskanda 1	Heavy Fuel
Sapugaskanda 2	Heavy Fuel
Kelanitissa Small Gas Turbines	Auto Diesel
GT 7 - Kelanitissa	Auto Diesel
Kelanitissa CCY	Naphtha or Diesel
Lakvijaya 1	Coal
Lakvijaya 2	Coal
Lakvijaya 3	Coal
Uthuru Janani	Heavy Fuel
Barge CEB	Heavy Fuel
KCCPS -2	Auto Diesel

Power Station	Primary Fuel
Private Thermal	
West Coast	Auto Diesel / Heavy Fuel
ACE Matara	Heavy Fuel
ACE Embilipitiya	Heavy Fuel

Major Incidents reported during the day

November 13, 2023

- 1) Broadlands Unit 01 tripped at 09:04hrs due to the indication of air cooler hot wind temperature to high alarm. The unit is yet to resumegeneration.
- 2) Kukule pond spilling stopped at 02:53hrs(14.11.2023). Upper Kothmale pond spilling started at 20:14hrs and continues to the present hour.