

Generation and Reservoirs Statistics

November 12, 2023



PUBLIC UTILITIES COMMISSION OF SRI LANKA

1. Daily Generation Mix in MWh

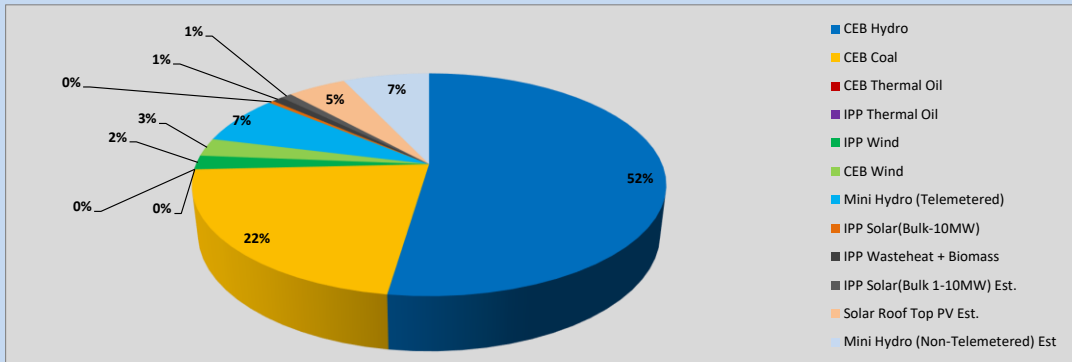


Table 01

	Generation (MWh)
CEB Hydro	17,994
CEB Coal	7,527
CEB Thermal Oil	-
IPP Thermal Oil	-
IPP Wind	704
CEB Wind	902
Mini Hydro (Telemetered)	2,453
IPP Solar (Bulk)	142
IPP Waste heat + Biomass	295
Total Generation (Excluding estimated figures)	30,017
* Estimated unserved energy	0
* Estimated Mini Hydro (Non telemetered)	2417
* Estimated IPP Solar PV (Bulk 1-10MW)	304
* Estimated Solar Roof Top PV	1640
Total Generation (Including estimated figures)	34,378

* Estimated figures of CEB generation report

Table 02

	Installed Capacity (MW)
CEB Hydro	1409
CEB Coal	810
CEB Thermal Oil	781
IPP Thermal Oil (West Coast, ACE Matara and ACE Embilipitiya)	387
IPP Wind	148
CEB Wind	100
Mini Hydro	422
IPP Waste heat + Biomass	50
IPP Solar	136
Rooftop Solar (Ordinary)	277
Rooftop Solar (LT Bulk)	263
Rooftop Solar (HT Bulk)	70

Data Source - Monthly Review Report [Aug-2023]

2. Cumulative Dispatch

Following data excludes the contribution from roof top solar, non telemetered solar and mini hydro plants

Table 03 - Current Month

Category	Dispatch (GWh)	
CEB Hydro	269	56.65%
CEB Coal	109	22.95%
CEB Thermal Oil	3	0.56%
IPP Thermal	1	0.18%
SPP Wind	2	0.51%
CEB Wind	3	0.61%
Mini Hydro *	58	12.32%
IPP Solar *	26	5.53%
IPP Waste heat + BMP	3	0.69%
Total	474	

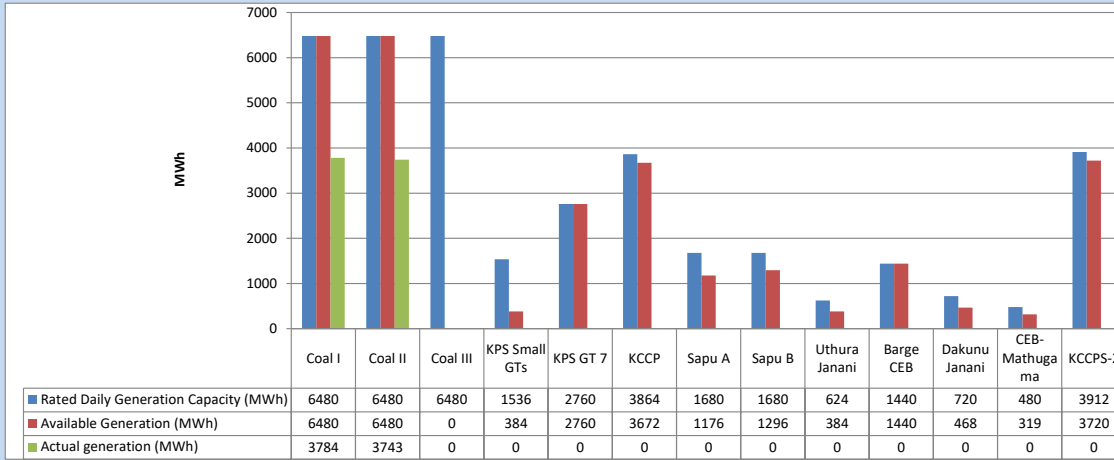
Table 04 - Current Year

Category	Dispatch (GWh)	
CEB Hydro	3,371	25.13%
CEB Coal	4,374	32.62%
CEB Thermal Oil	1,948	14.52%
IPP Thermal	1,115	8.31%
SPP Wind	367	2.74%
CEB Wind	355	2.65%
Mini Hydro *	985	7.34%
IPP Solar *	763	5.69%
IPP Waste heat	134	1.00%
Total	13,411	

*Including estimated contribution from non telemetered plants

3. CEB owned Thermal Plant Dispatch

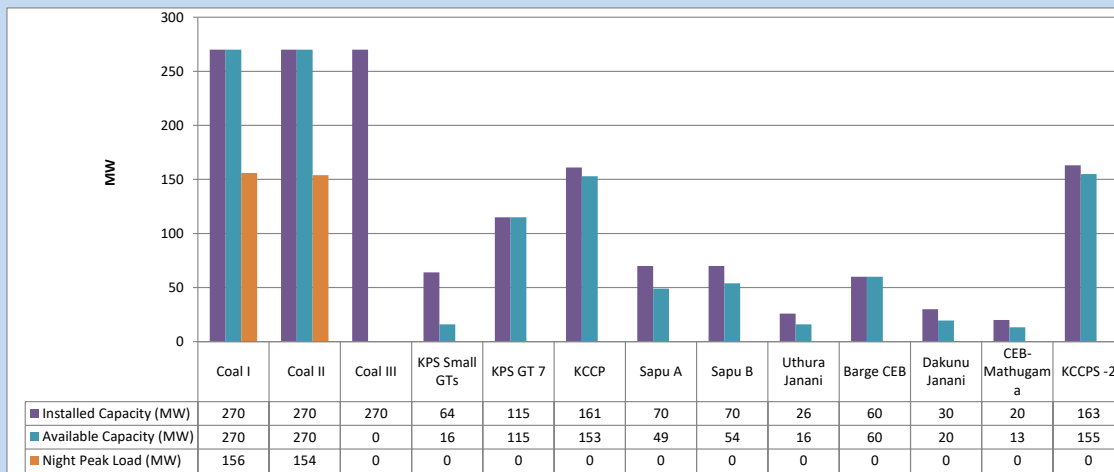
November 12, 2023



Available Generation is estimated based on plant availability at 6.00am on

November 13, 2023

4. CEB owned Thermal Plant Loading at the Night Peak

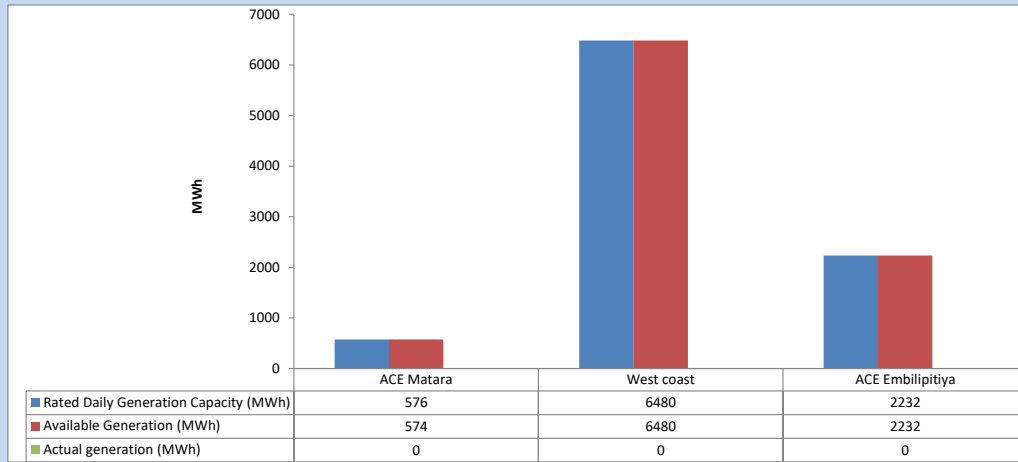


Plant availability is recorded at 6.00 am on

November 13, 2023

5. IPP owned Thermal Plant Dispatch

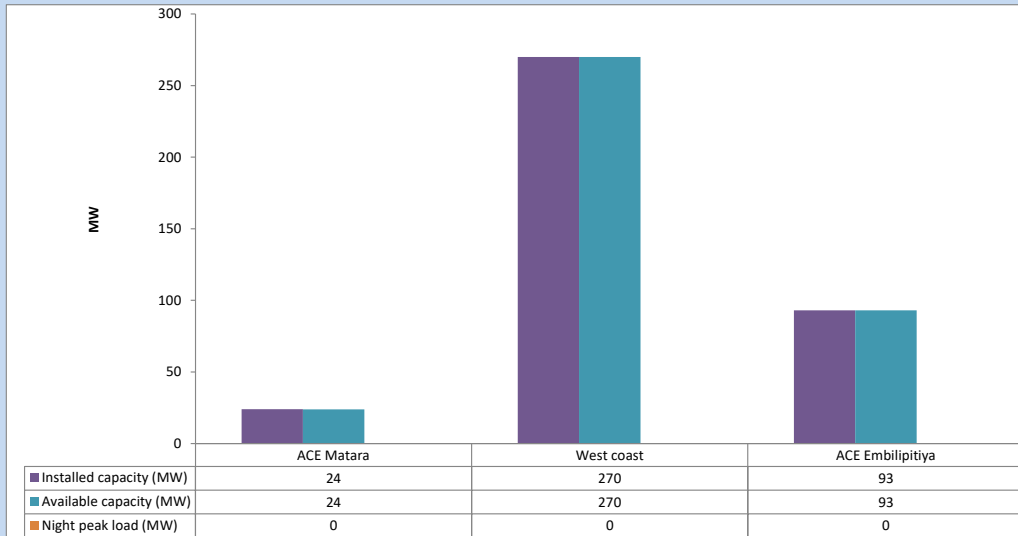
November 12, 2023



Available Generation is estimated based on plant availability at 6.00am on

November 13, 2023

6. IPP owned Thermal Plant Loading at the Night Peak

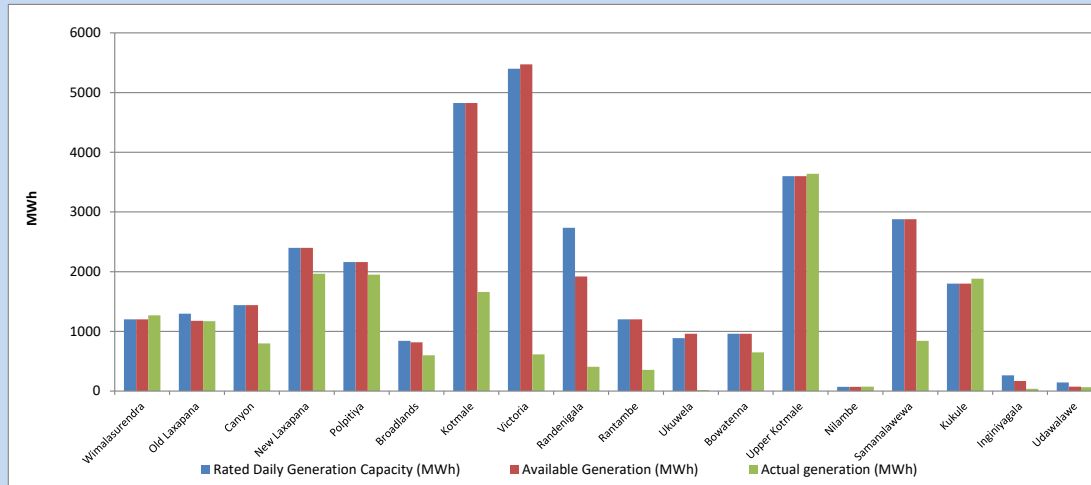


Plant availability is recorded at 6.00 am on

November 13, 2023

7. Major Hydro Plant Dispatch

November 12, 2023

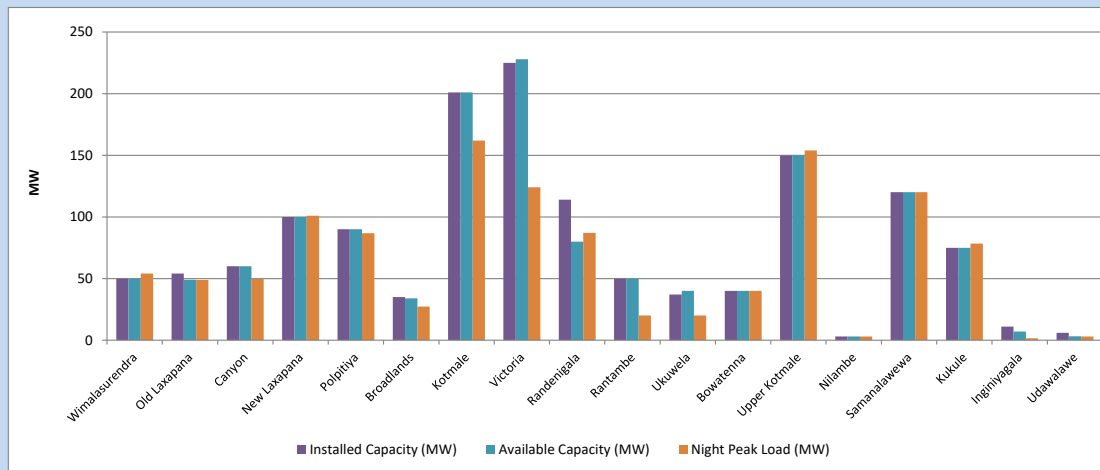


Available Generation is estimated based on plant availability at 6.00am on November 13, 2023
Broadlands power plant is operating in the Commissioning Stage

November 13, 2023

8. Major Hydro Plant Loading at Night Peak

November 12, 2023



Plant availability is recorded at 6.00 am on November 13, 2023
Broadlands power plant is operating in the Commissioning Stage

November 13, 2023

9. Summary of Major Plant performance

Table 05

Plant	Installed Capacity (MW)	Plant Availability (MW)	Night peak Load (MW)	Plant Dispatch (MWh)
Wimalasurendra	50	50	54	1,270
Old Laxapana Canyon	54	49	49	1,171
New Laxapana	60	60	50	797
Polpitiya	100	100	101	1,965
Broadlands	90	90	87	1,950
Kotmale	35	34	27	598
Victoria	201	201	162	1,660
Randenigala	225	228	124	616
Rantambe	114	80	87	406
Ukuwela	50	50	20	356
Bowatenna	37	40	20	17
Upper Kotmale	40	40	40	649
Nilambe	150	150	154	3,639
Samanalawewa	3	3	3	75
Kukule	120	120	120	840
Inginiyagala	75	75	78	1,883
Udawalawe	11	7	2	36
Puttalam Coal I	6	3	3	66
Puttalam Coal II	270	270	156	3,784
Puttalam Coal III	270	270	154	3,743
KPS Small GTs	270	0	0	0
KPS GT 7	64	16	0	0
KCCP	115	115	0	0
Sapugaskanda A	161	153	0	0
Sapugaskanda B	70	49	0	0
Uthura Janani	70	54	0	0
Barge CEB	26	16	0	0
CEB-Hambantota	60	60	0	0
CEB-Mathugama	30	20	0	0
ACE Matara	20	13	0	0
Asia Power	24	24	0	0
KCCPS -2	50	0	0	0
West Coast	163	155	0	0
Nothern Power	270	270	0	0
ACE Embilipitiya	36	0	0	0
Total	93	93	0	0
Total	3,483	2,958	1,678	30,017

Plant availability is the availability recorded at 6 am on

November 13, 2023

10. Contribution to the Night Peak in MW

November 12, 2023

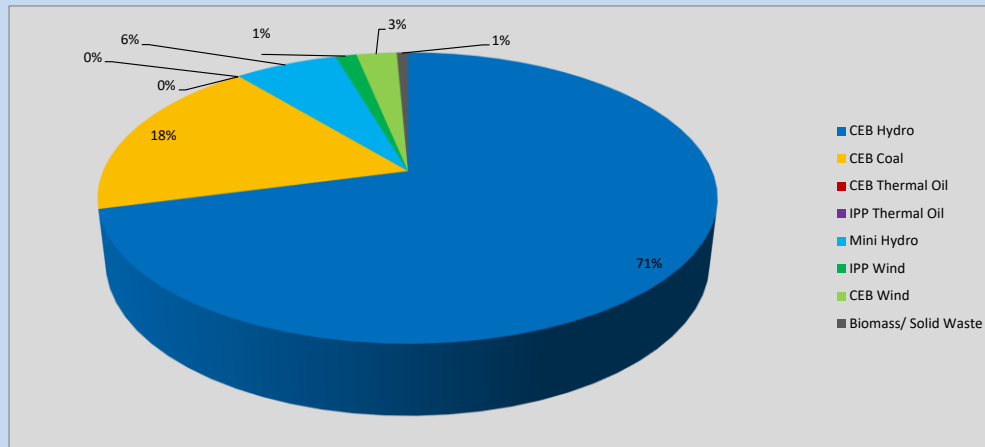


Table 06

CEB Hydro	1210	MW
CEB Coal	310	MW
CEB Thermal Oil	0	MW
IPP Thermal Oil	0	MW
Mini Hydro (Telemetered)	110	MW
IPP Wind	22.3	MW
CEB Wind	42.9	MW
Biomass/ Solid Waste	12	MW

Recorded Peak Demand Data

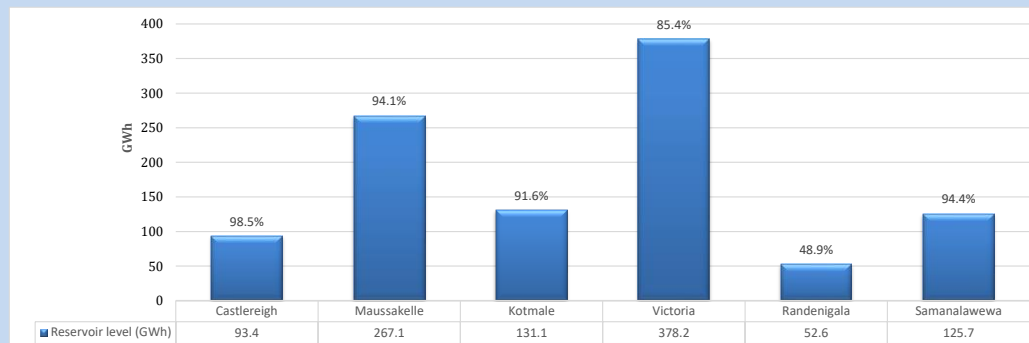
Table 07

Night Peak*	1,707	MW
Day Peak Maximum Demand	1,304	MW
Day Peak Minimum Demand	1,107	MW
Off Peak Minimum Demand	1,049	MW

Above figures are excluding contribution from roof top solar, non telemetered solar and mini hydro plants

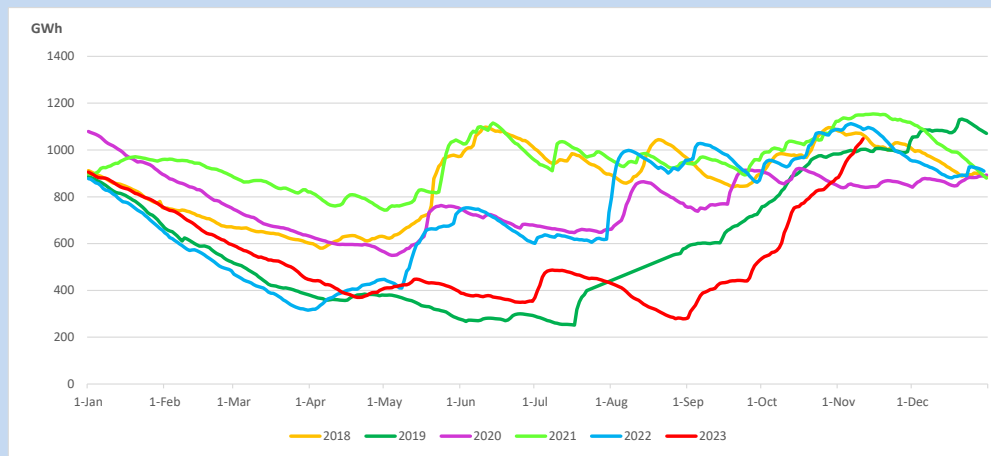
Reservoir Levels -

as at 06.00 Hr on November 13, 2023

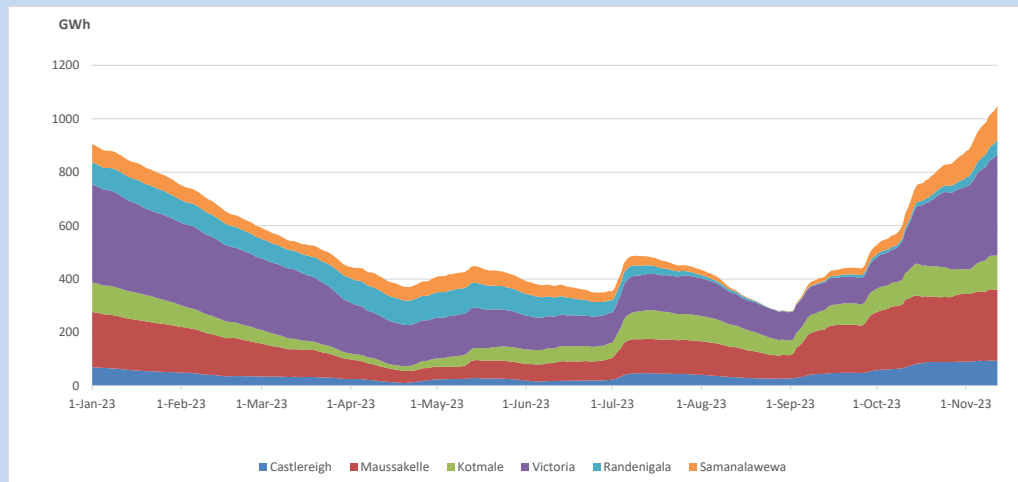


Total Reservoir Level 1048.1 GWh
 % of Total capacity 87.0%

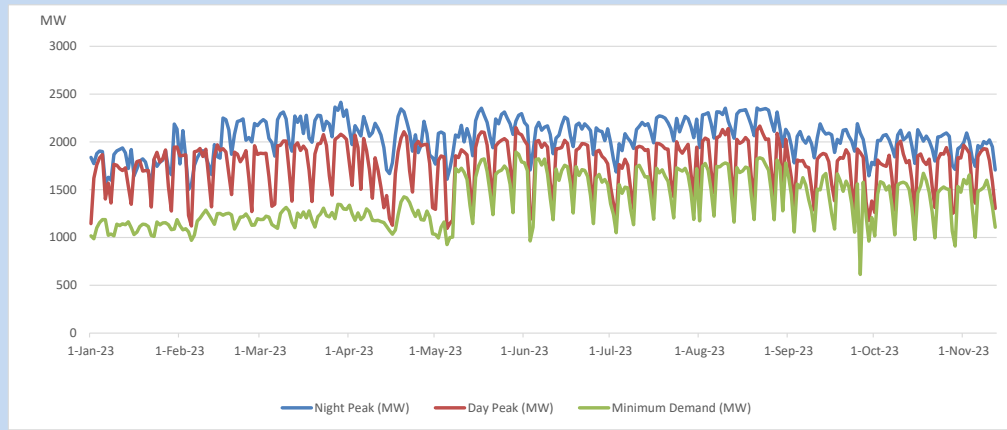
11. Comparison of Total Reservoir Storage Levels with Past Years



12. Variation of Major Hydro Reservoir Levels in the current year (GWh)



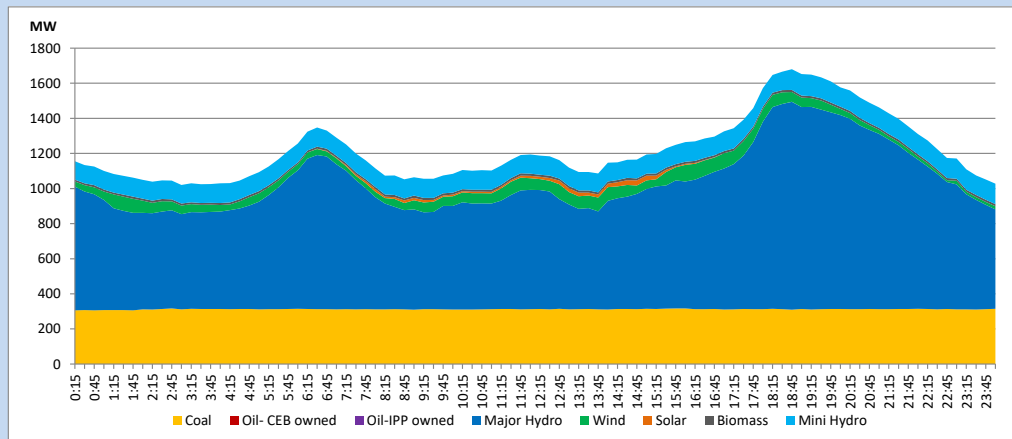
13. Variation of Demand during the current year



The above figures are excluding contribution from roof top solar, non telemetered solar and mini hydro plants

14. Daily Load Curve

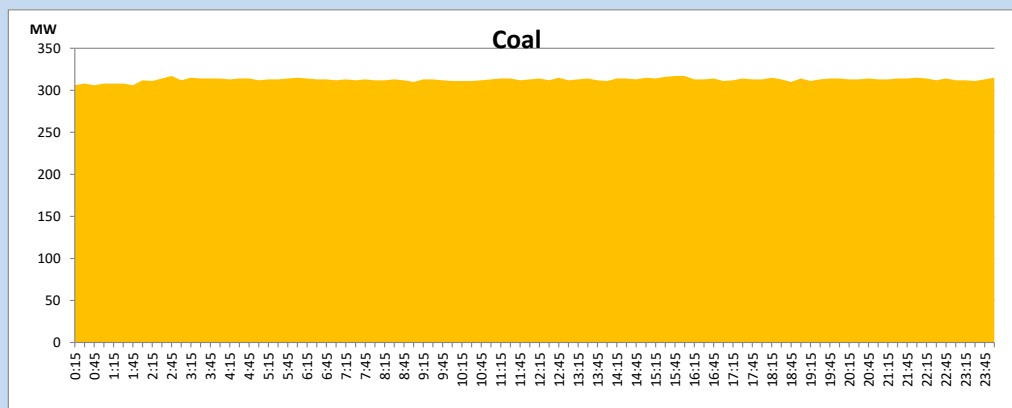
November 12, 2023



Solar and wind data is based on Telemetered Power Stations only

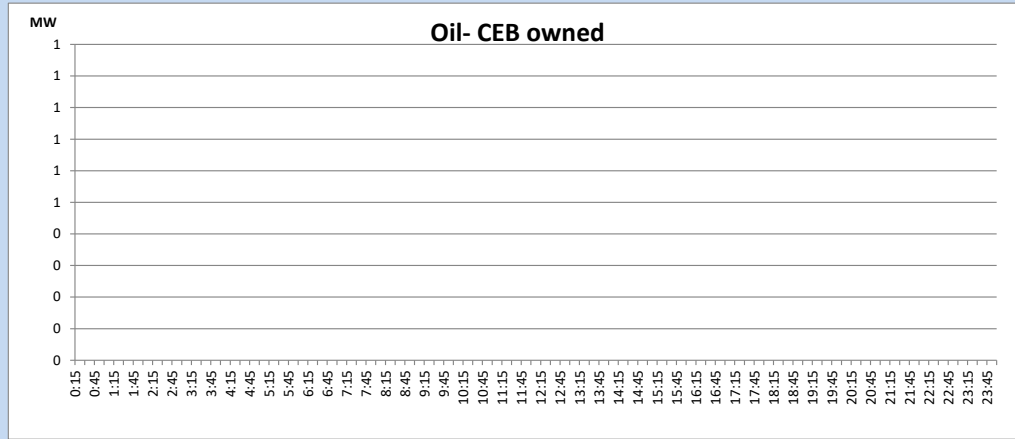
Coal Generation during

November 12, 2023



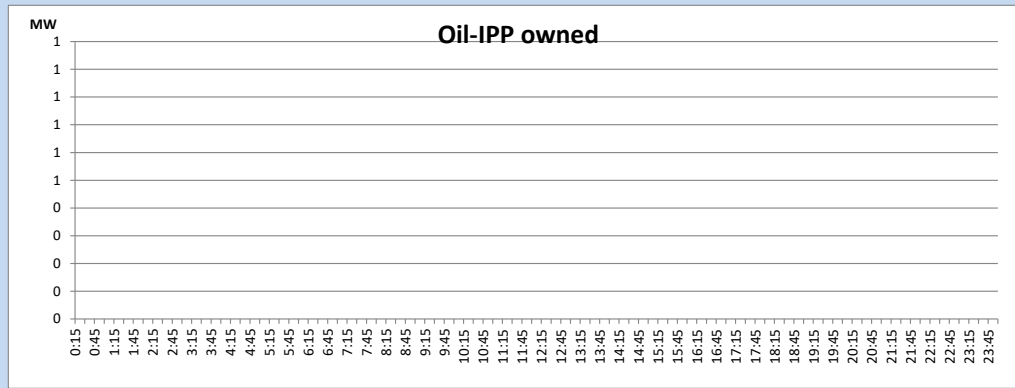
CEB Oil Plant Generation during

November 12, 2023



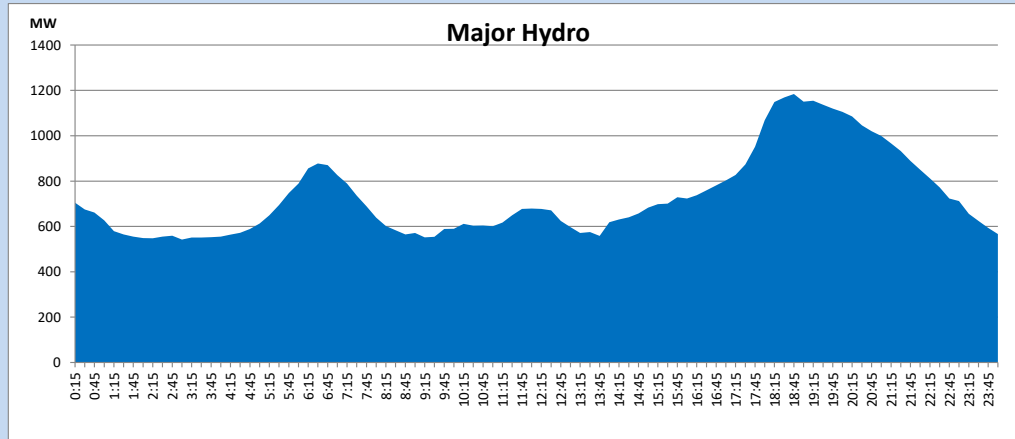
IPP Oil Plant Generation during

November 12, 2023



Major Hydro Generation during

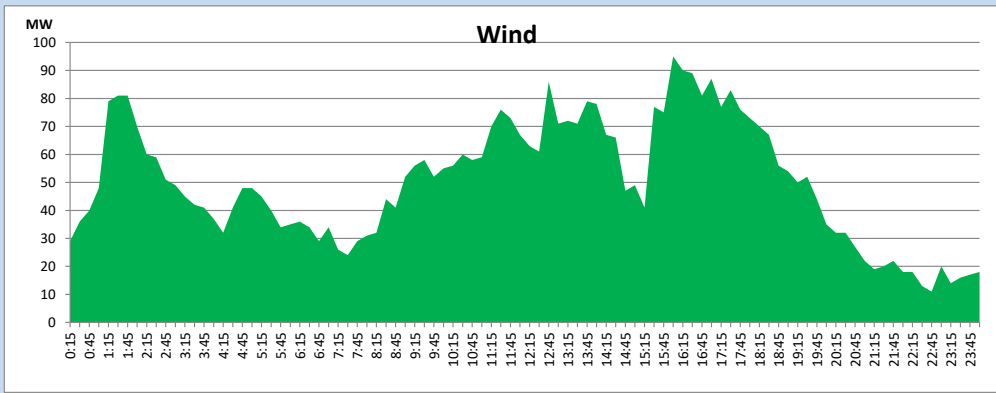
November 12, 2023



Wind Generation during

November 12, 2023

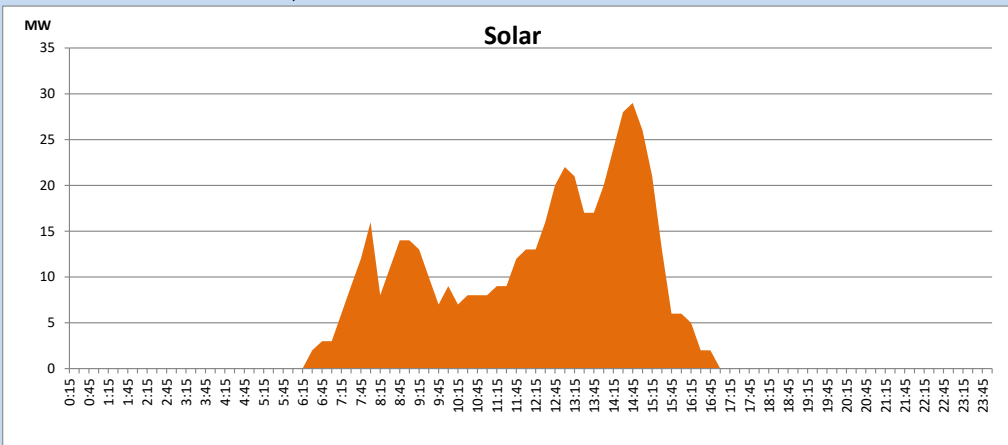
Based on Telemetered Power Stations only



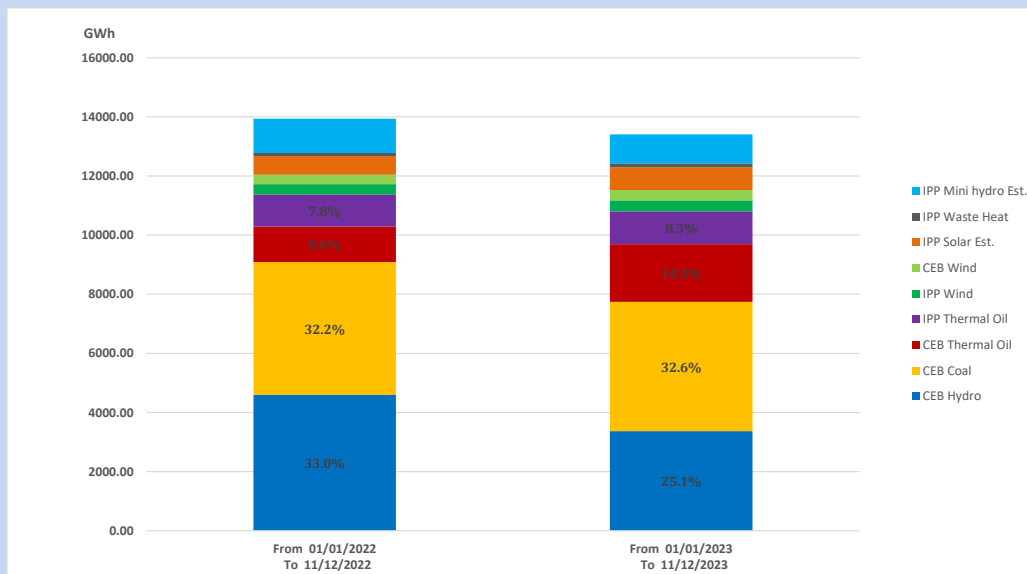
Solar Generation during

November 12, 2023

Based on Telemetered Power Stations only



15. Cumulative Dispatch Comparison with Last Year



Cumulative dispatch
 From 01/01/2022 To 11/12/2022
 From 01/01/2023 To 11/12/2023

13940 GWh
 13411 GWh

The above figures are including contribution from roof top solar, non telemetered solar and mini hydro plants (figures have been adjusted based on the data from the CEB monthly review reports.)

Thermal Plant Fuel types

Table 08

Power Station	Primary Fuel
CEB Thermal	
Sapugaskanda 1	Heavy Fuel
Sapugaskanda 2	Heavy Fuel
Kelanitissa Small Gas Turbines	Auto Diesel
GT 7 - Kelanitissa	Auto Diesel
Kelanitissa CCY	Naphtha or Diesel
Lakvijaya 1	Coal
Lakvijaya 2	Coal
Lakvijaya 3	Coal
Uthuru Janani	Heavy Fuel
Barge CEB	Heavy Fuel
KCCPS -2	Auto Diesel

Power Station	Primary Fuel
Private Thermal	
West Coast	Auto Diesel / Heavy Fuel
ACE Matara	Heavy Fuel
ACE Embilipitiya	Heavy Fuel

Major Incidents reported during the day

November 12, 2023

- 1) Kukule pond spilling stopped at 08:24hrs and started again at 20:58hrs. Spilling continues to the present hour