

Generation and Reservoirs Statistics

November 11, 2023



PUBLIC UTILITIES COMMISSION OF SRI LANKA

1. Daily Generation Mix in MWh

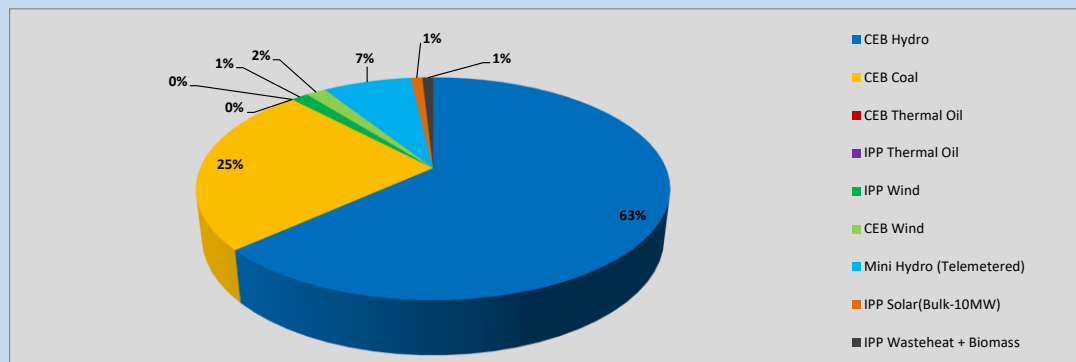


Table 01

	Generation (MWh)
CEB Hydro	21,387
CEB Coal	8,299
CEB Thermal Oil	-
IPP Thermal Oil	-
IPP Wind	477
CEB Wind	547
Mini Hydro (Telemetered)	2,436
IPP Solar (Bulk)	320
IPP Waste heat + Biomass	297
Total Generation (Excluding estimated figures)	33,763
* Estimated unserved energy	0
* Estimated Mini Hydro (Non telemetered)	2434
* Estimated IPP Solar PV (Bulk 1-10MW)	304
* Estimated Solar Roof Top PV	1640
Total Generation (Including estimated figures)	38,141

* Estimated figures of CEB generation report

Table 02

	Installed Capacity (MW)
CEB Hydro	1409
CEB Coal	810
CEB Thermal Oil	781
IPP Thermal Oil (West Coast, ACE Matara and ACE Embilipitiya)	387
IPP Wind	148
CEB Wind	100
Mini Hydro	416
IPP Waste heat + Biomass	50
IPP Solar	130
Rooftop Solar* (Ordinary)	267
Rooftop Solar* (LT Bulk)	256
Rooftop Solar* (HT Bulk)	61

Data Source - Monthly Review Report [May-2023]

2. Cumulative Dispatch

Following data excludes the contribution from roof top solar, non telemetered solar and mini hydro plants

Table 03 - Current Month

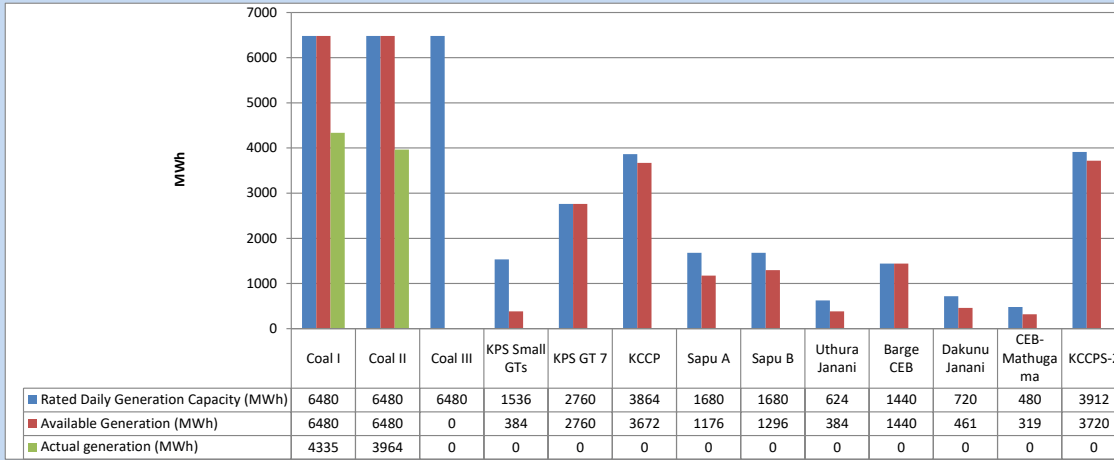
Category	Dispatch (GWh)	
CEB Hydro	251	64.00%
CEB Coal	101	25.87%
CEB Thermal Oil	3	0.68%
IPP Thermal	1	0.22%
SPP Wind	2	0.44%
CEB Wind	2	0.51%
Mini Hydro (Telemetered)	27	6.82%
IPP Solar(Bulk-10MW)	3	0.71%
IPP Waste heat + BMP	3	0.76%
Total	392	

Table 04 - Current Year

Category	Dispatch (GWh)	
CEB Hydro	3,365	27.90%
CEB Coal	4,377	36.29%
CEB Thermal Oil	1,956	16.22%
IPP Thermal	1,115	9.24%
SPP Wind	348	2.89%
CEB Wind	358	2.97%
Mini Hydro (Telemetered)	336	2.79%
IPP Solar(Bulk-10MW)	94	0.78%
IPP Waste heat	111	0.92%
Total	12,060	

3. CEB owned Thermal Plant Dispatch

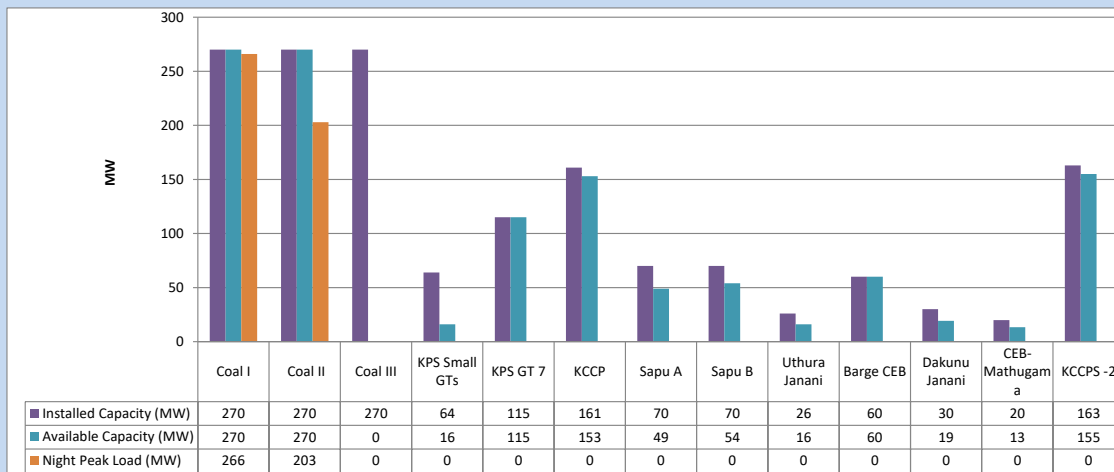
November 11, 2023



Available Generation is estimated based on plant availability at 6.00am on

November 12, 2023

4. CEB owned Thermal Plant Loading at the Night Peak

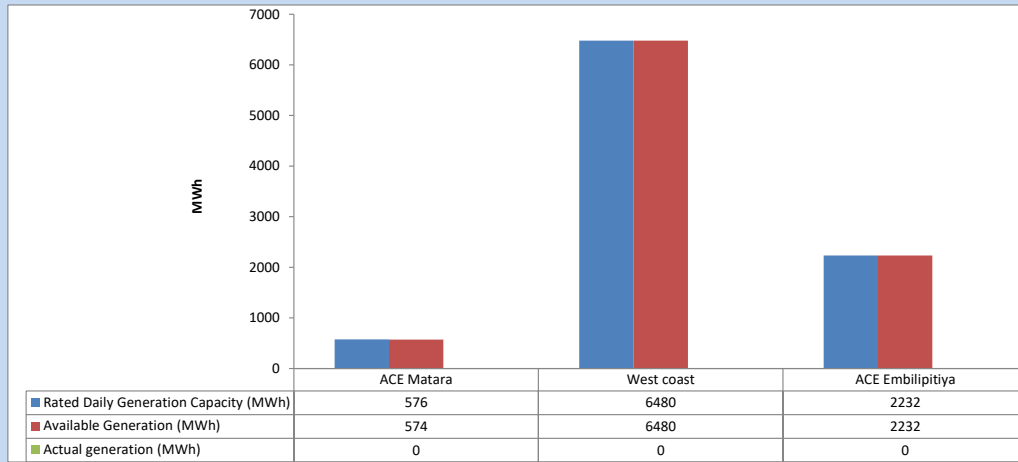


Plant availability is recorded at 6.00 am on

November 12, 2023

5. IPP owned Thermal Plant Dispatch

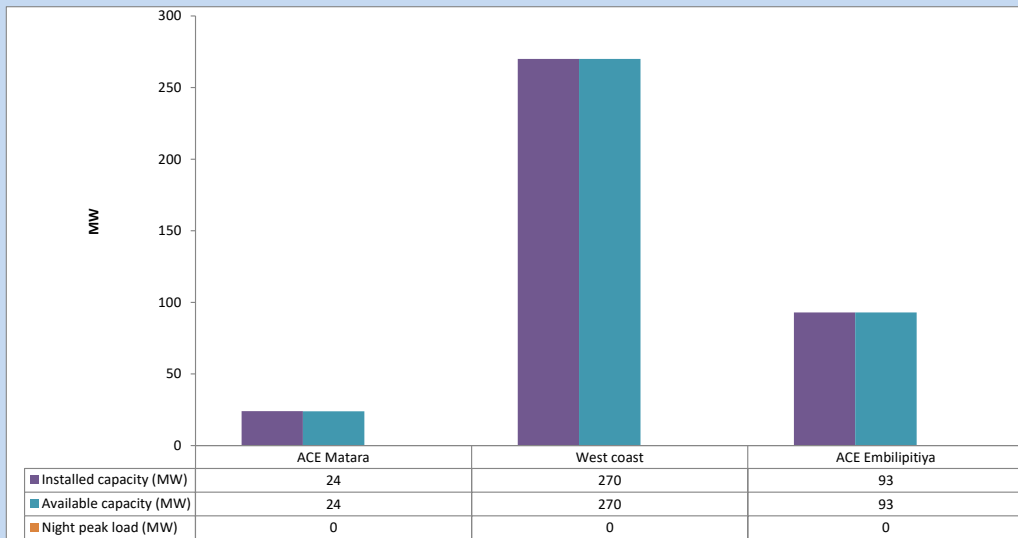
November 11, 2023



Available Generation is estimated based on plant availability at 6.00am on

November 12, 2023

6. IPP owned Thermal Plant Loading at the Night Peak

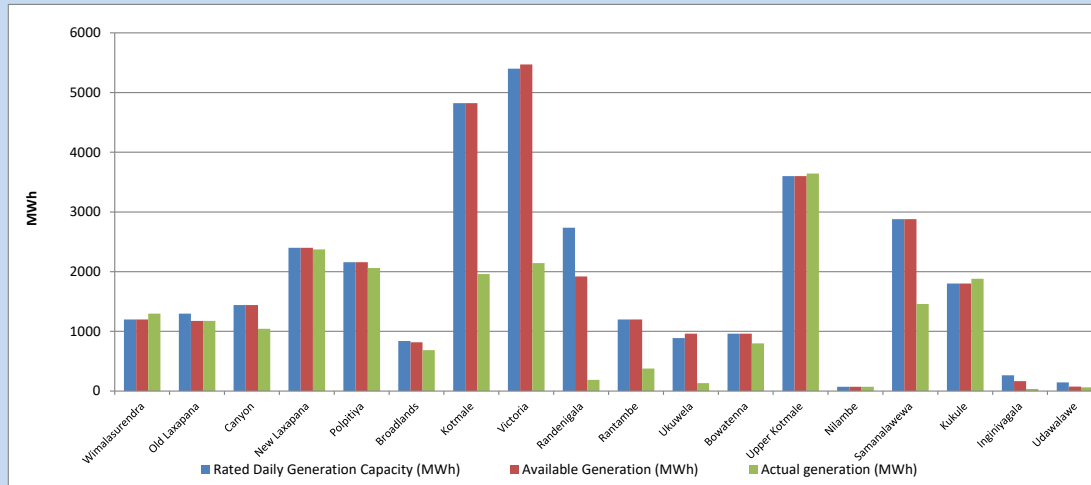


Plant availability is recorded at 6.00 am on

November 12, 2023

7. Major Hydro Plant Dispatch

November 11, 2023

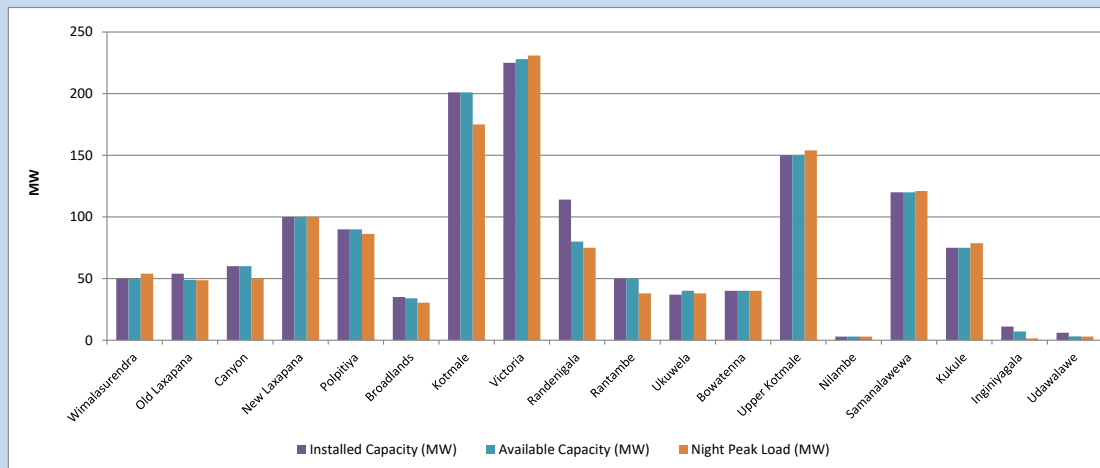


Available Generation is estimated based on plant availability at 6.00am on November 12, 2023
 Broadlands power plant is operating in the Commissioning Stage

November 12, 2023

8. Major Hydro Plant Loading at Night Peak

November 11, 2023



Plant availability is recorded at 6.00 am on November 12, 2023
 Broadlands power plant is operating in the Commissioning Stage

November 12, 2023

9. Summary of Major Plant performance

Table 05

Plant	Installed Capacity (MW)	Plant Availability (MW)	Night peak Load (MW)	Plant Dispatch (MWh)
Wimalasurendra	50	50	54	1,298
Old Laxapana	54	49	49	1,175
Canyon	60	60	50	1,044
New Laxapana	100	100	100	2,371
Polpitiya	90	90	86	2,060
Broadlands	35	34	30	686
Kotmale	201	201	175	1,960
Victoria	225	228	231	2,144
Randenigala	114	80	75	187
Rantambe	50	50	38	376
Ukuwela	37	40	38	133
Bowatenna	40	40	40	798
Upper Kotmale	150	150	154	3,643
Nilambe	3	3	3	71
Samanalawewa	120	120	121	1,459
Kukule	75	75	79	1,882
Inginiyagala	11	7	2	36
Udawalawe	6	3	3	64
Puttalam Coal I	270	270	266	4,335
Puttalam Coal II	270	270	203	3,964
Puttalam Coal III	270	0	0	0
KPS Small GTs	64	16	0	0
KPS GT 7	115	115	0	0
KCCP	161	153	0	0
Sapugaskanda A	70	49	0	0
Sapugaskanda B	70	54	0	0
Uthura Janani	26	16	0	0
Barge CEB	60	60	0	0
CEB-Hambantota	30	19	0	0
CEB-Mathugama	20	13	0	0
ACE Matara	24	24	0	0
Asia Power	50	0	0	0
KCCPS -2	163	155	0	0
West Coast	270	270	0	0
Nothern Power	36	0	0	0
ACE Embilipitiya	93	93	0	0
Total	3,483	2,958	1,938	33,763

Plant availability is the availability recorded at 6 am on

November 12, 2023

10. Contribution to the Night Peak in MW

November 11, 2023

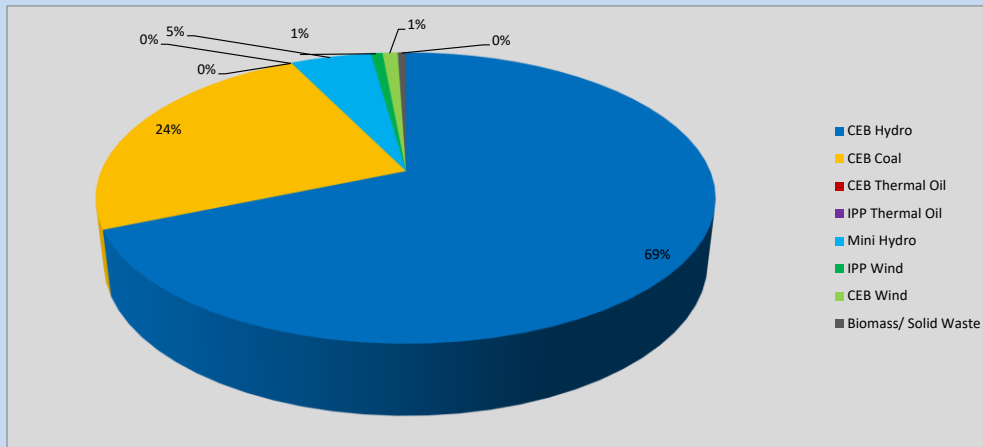


Table 06

CEB Hydro	1338	MW
CEB Coal	469	MW
CEB Thermal Oil	0	MW
IPP Thermal Oil	0	MW
Mini Hydro (Telemetered)	98	MW
IPP Wind	14.3	MW
CEB Wind	18.5	MW
Biomass/ Solid Waste	10	MW

Recorded Peak Demand Data

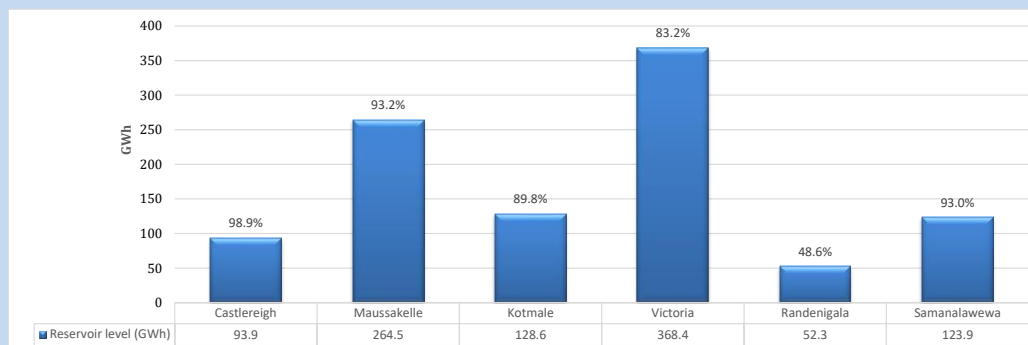
Table 07

Night Peak*	1,948	MW
Day Peak Maximum Demand	1,586	MW
Day Peak Minimum Demand	1,324	MW
Off Peak Minimum Demand	1,068	MW

Above figures are excluding contribution from roof top solar, non telemetered solar and mini hydro plants

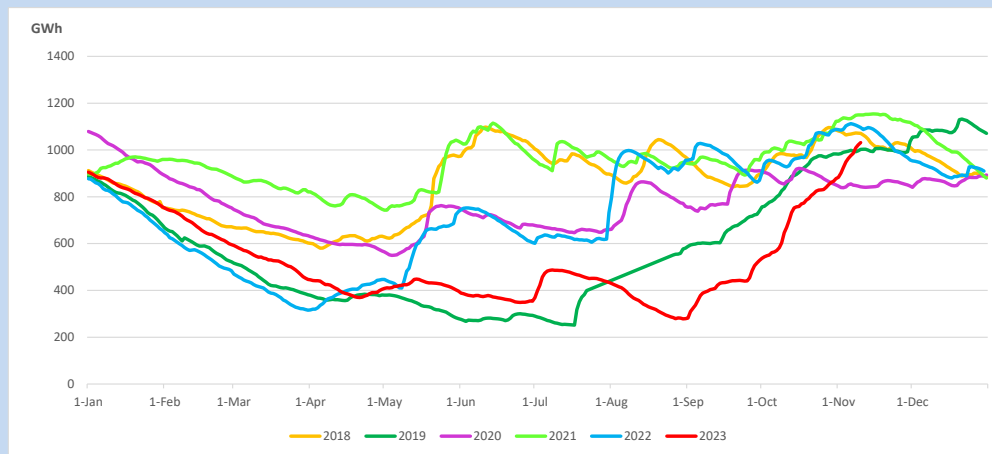
Reservoir Levels -

as at 06.00 Hr on November 12, 2023

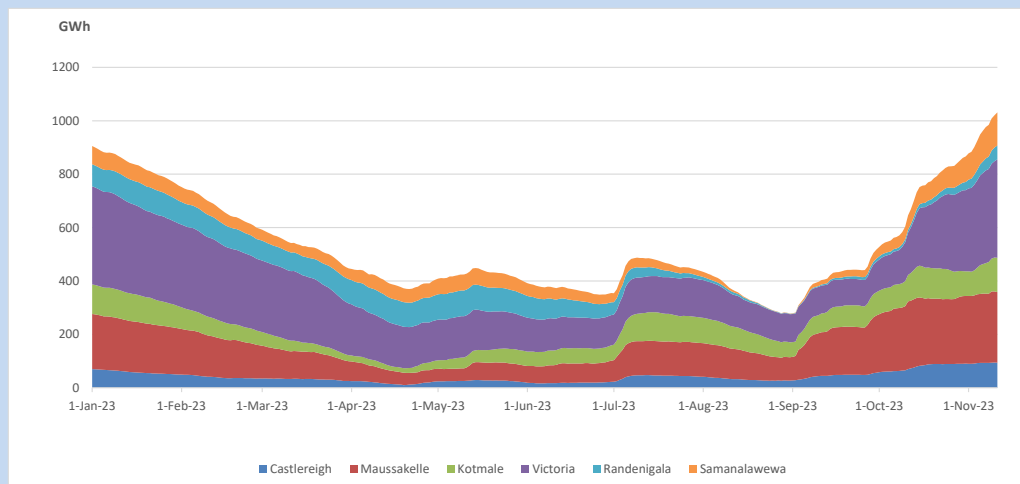


Total Reservoir Level 1031.6 GWh
 % of Total capacity 85.6%

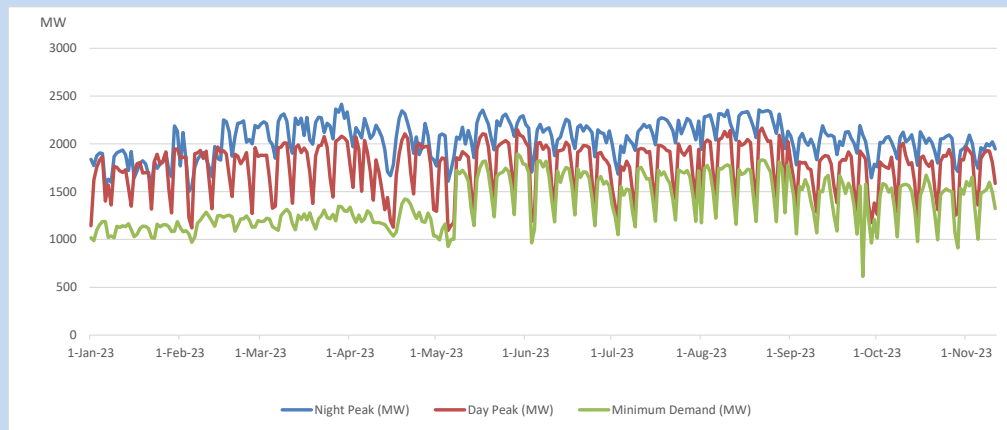
11. Comparison of Total Reservoir Storage Levels with Past Years



12. Variation of Major Hydro Reservoir Levels in the current year (GWh)



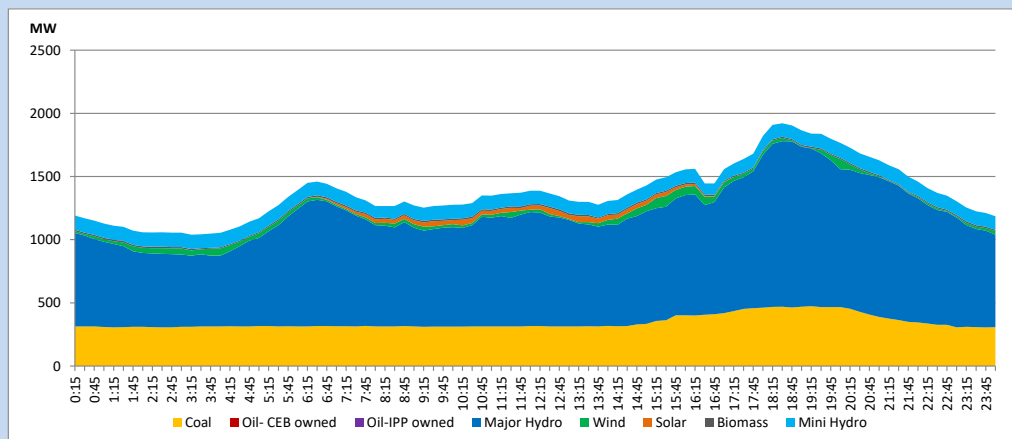
13. Variation of Demand during the current year



The above figures are excluding contribution from roof top solar, non telemetered solar and mini hydro plants

14. Daily Load Curve

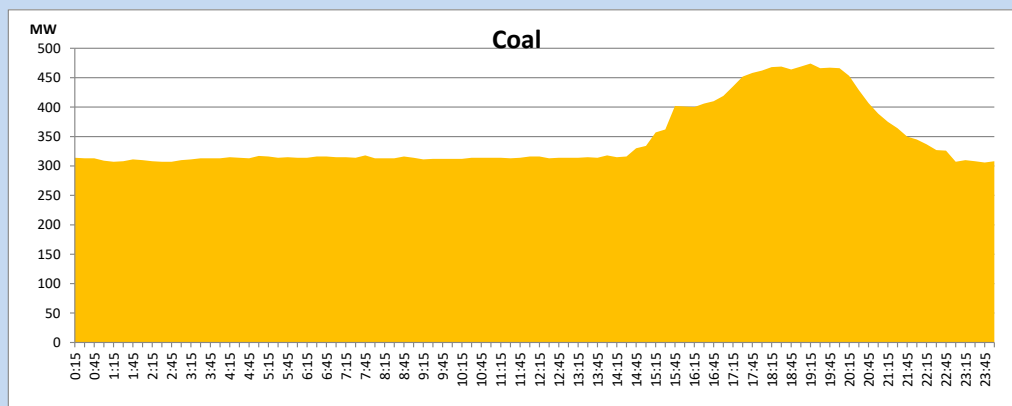
November 11, 2023



Solar and wind data is based on Telemetered Power Stations only

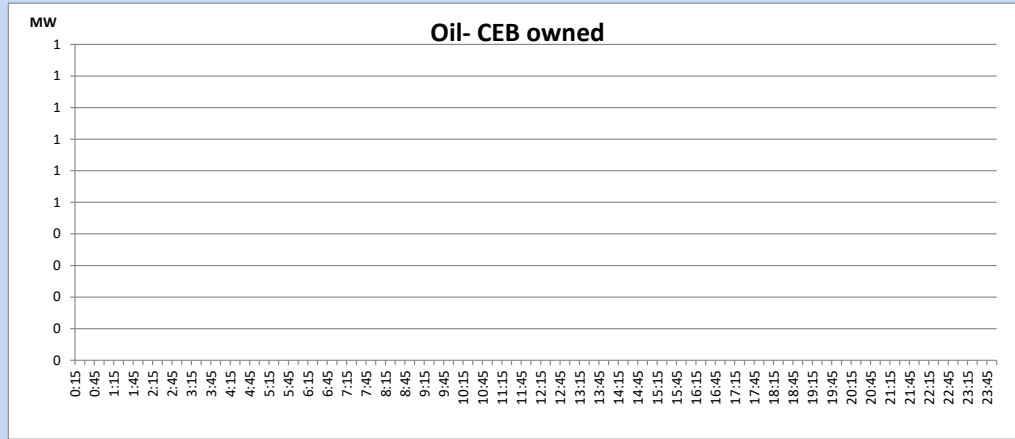
Coal Generation during

November 11, 2023



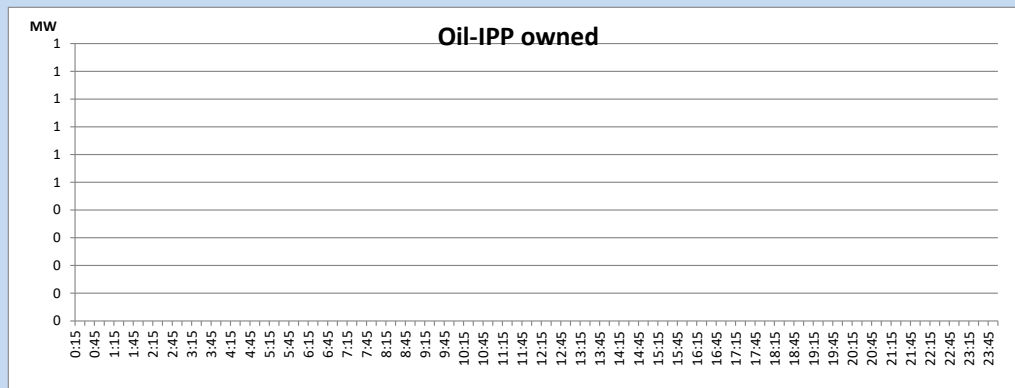
CEB Oil Plant Generation during

November 11, 2023



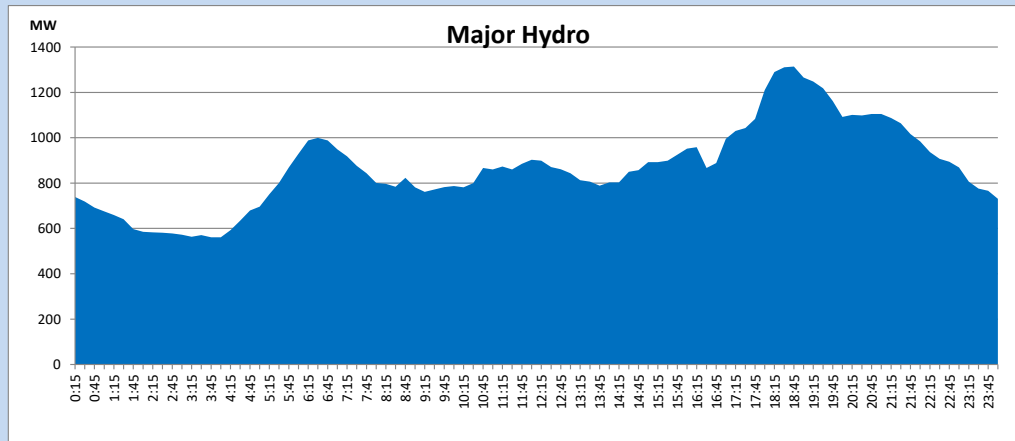
IPP Oil Plant Generation during

November 11, 2023



Major Hydro Generation during

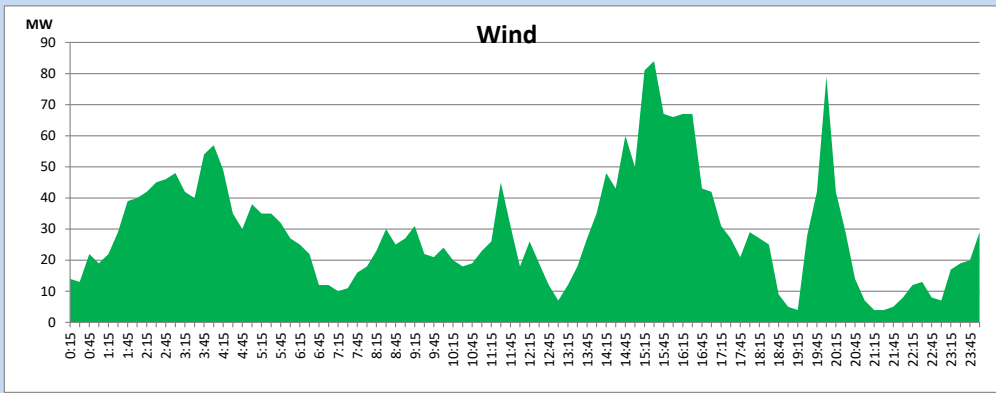
November 11, 2023



Wind Generation during

November 11, 2023

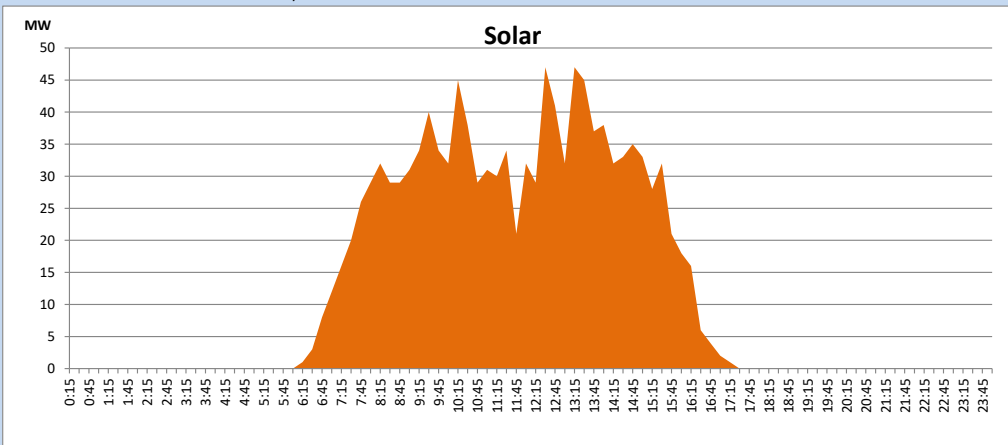
Based on Telemetered Power Stations only



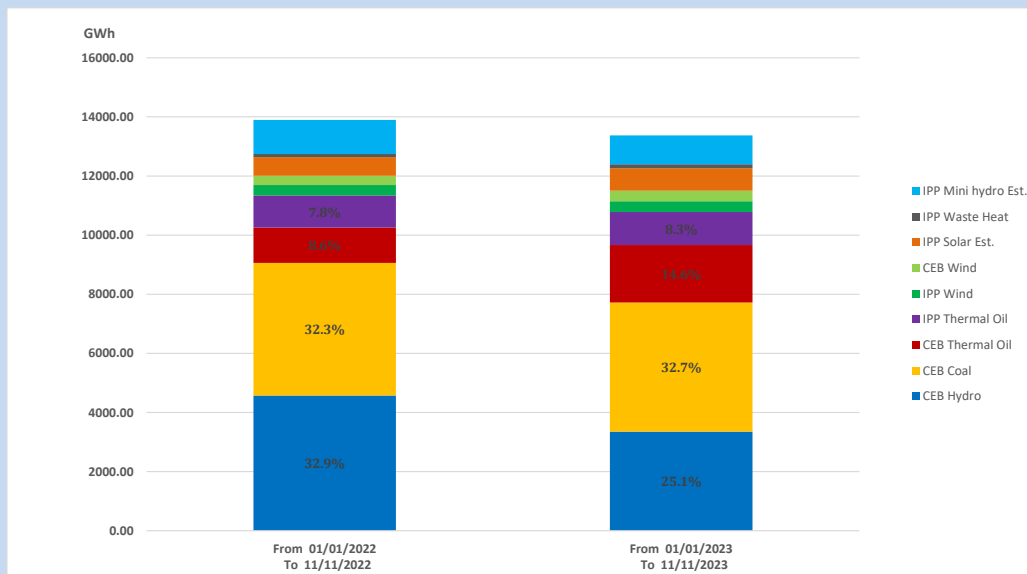
Solar Generation during

November 11, 2023

Based on Telemetered Power Stations only



15. Cumulative Dispatch Comparison with Last Year



Cumulative dispatch
 From 01/01/2022 To 11/11/2022
 From 01/01/2023 To 11/11/2023

13901 GWh
 13378 GWh

The above figures are including contribution from roof top solar, non telemetered solar and mini hydro plants (figures have been adjusted based on the data from the CEB monthly review reports.)

Thermal Plant Fuel types

Table 08

Power Station	Primary Fuel
CEB Thermal	
Sapugaskanda 1	Heavy Fuel
Sapugaskanda 2	Heavy Fuel
Kelanitissa Small Gas Turbines	Auto Diesel
GT 7 - Kelanitissa	Auto Diesel
Kelanitissa CCY	Naphtha or Diesel
Lakvijaya 1	Coal
Lakvijaya 2	Coal
Lakvijaya 3	Coal
Uthuru Janani	Heavy Fuel
Barge CEB	Heavy Fuel
KCCPS -2	Auto Diesel

Power Station	Primary Fuel
Private Thermal	
West Coast	Auto Diesel / Heavy Fuel
ACE Matara	Heavy Fuel
ACE Embilipitiya	Heavy Fuel

Major Incidents reported during the day

November 11, 2023

- 1) Polpitiya-Nawalapitiya 132kV cct tripped at 16:26hrs due to the operation of distance protection. At the same time, Polpitiya-Kiribathkumbur 132kV cct tripped due to the operation of O/C protection. This caused Nawalapitiya, Kiribathkumbura, Kurunegala, Pallekele GSSs and all three T/Fs of Ukuwela GSS to be dead. All affected GSSs were normalized by 16:52hrs and all feeders were normalized by 17:15hrs. Polpitiya- Kiribathkumbura 132kV cct was restored at 16:44hrs. Polpitiya-Nawalapitiya 132kV cct was restored at 17:05hrs.
- 2) Upper Kothmale pond spilling stopped at 19:26hrs and Kukule pond spilling continues to the present hour