

Generation and Reservoirs Statistics

November 10, 2023



PUBLIC UTILITIES COMMISSION OF SRI LANKA

1. Daily Generation Mix in MWh

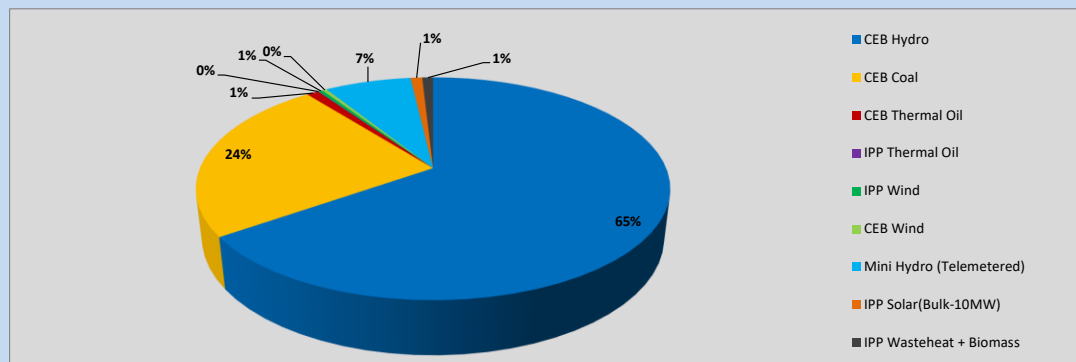


Table 01

	Generation (MWh)
CEB Hydro	23,560
CEB Coal	8,694
CEB Thermal Oil	342
IPP Thermal Oil	25
IPP Wind	130
CEB Wind	128
Mini Hydro (Telemetered)	2,546
IPP Solar (Bulk)	345
IPP Waste heat + Biomass	319
Total Generation (Excluding estimated figures)	36,089
* Estimated unserved energy	0
* Estimated Mini Hydro (Non telemetered)	2324
* Estimated IPP Solar PV (Bulk 1-10MW)	304
* Estimated Solar Roof Top PV	1640
Total Generation (Including estimated figures)	40,357

* Estimated figures of CEB generation report

Table 02

	Installed Capacity (MW)
CEB Hydro	1409
CEB Coal	810
CEB Thermal Oil	781
IPP Thermal Oil (West Coast, ACE Matara and ACE Embilipitiya)	387
IPP Wind	148
CEB Wind	100
Mini Hydro	416
IPP Waste heat + Biomass	50
IPP Solar	130
Rooftop Solar* (Ordinary)	267
Rooftop Solar* (LT Bulk)	256
Rooftop Solar* (HT Bulk)	61

Data Source - Monthly Review Report [May-2023]

2. Cumulative Dispatch

Following data excludes the contribution from roof top solar, non telemetered solar and mini hydro plants

Table 03 - Current Month

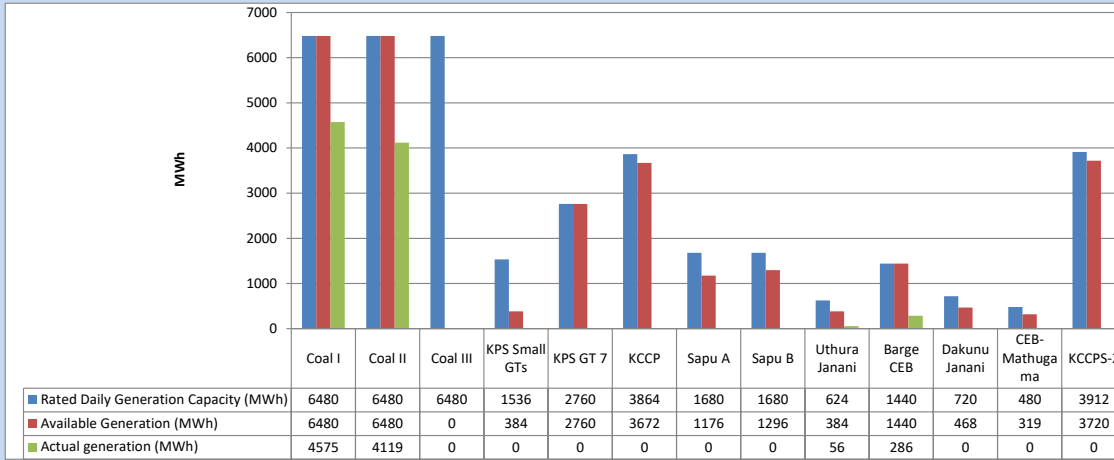
Category	Dispatch (GWh)	
CEB Hydro	229	64.06%
CEB Coal	93	25.99%
CEB Thermal Oil	3	0.74%
IPP Thermal	1	0.24%
SPP Wind	1	0.34%
CEB Wind	1	0.40%
Mini Hydro (Telemetered)	24	6.78%
IPP Solar(Bulk-10MW)	2	0.69%
IPP Waste heat + BMP	3	0.75%
Total	358	

Table 04 - Current Year

Category	Dispatch (GWh)	
CEB Hydro	3,343	27.80%
CEB Coal	4,369	36.33%
CEB Thermal Oil	1,956	16.27%
IPP Thermal	1,115	9.27%
SPP Wind	348	2.89%
CEB Wind	358	2.97%
Mini Hydro (Telemetered)	334	2.77%
IPP Solar(Bulk-10MW)	93	0.78%
IPP Waste heat	111	0.92%
Total	12,027	

3. CEB owned Thermal Plant Dispatch

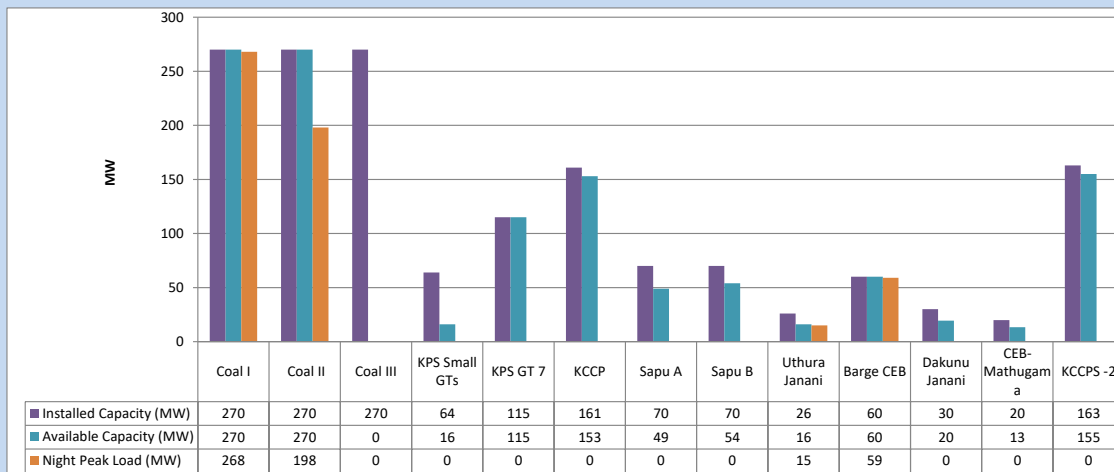
November 10, 2023



Available Generation is estimated based on plant availability at 6.00am on

November 11, 2023

4. CEB owned Thermal Plant Loading at the Night Peak

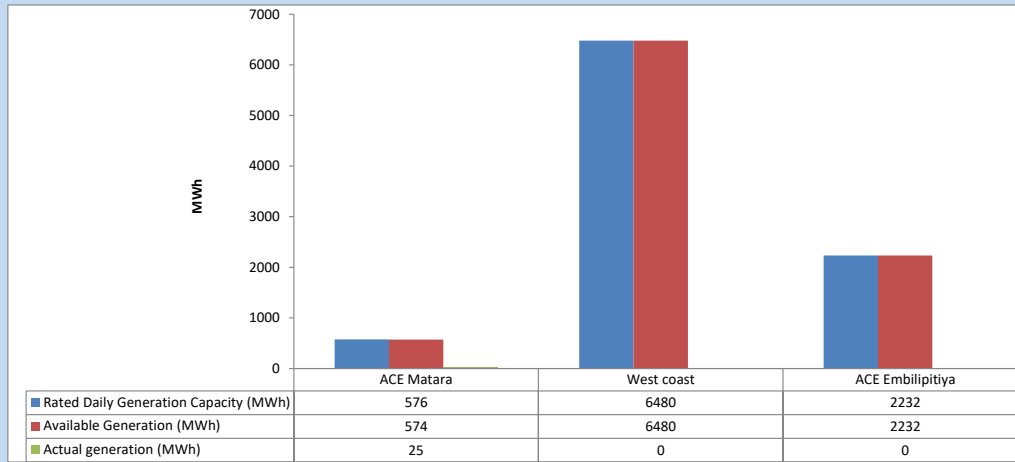


Plant availability is recorded at 6.00 am on

November 11, 2023

5. IPP owned Thermal Plant Dispatch

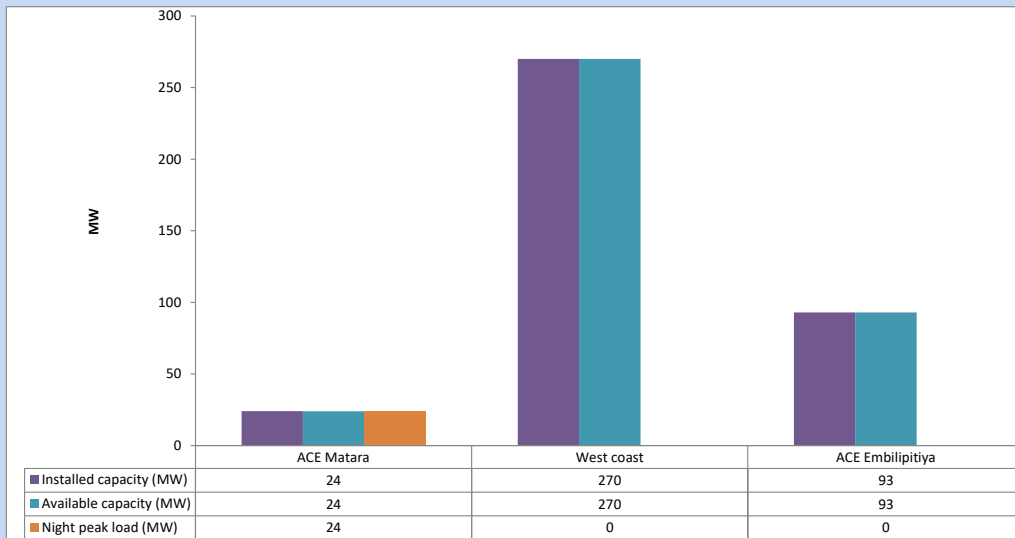
November 10, 2023



Available Generation is estimated based on plant availability at 6.00am on

November 11, 2023

6. IPP owned Thermal Plant Loading at the Night Peak

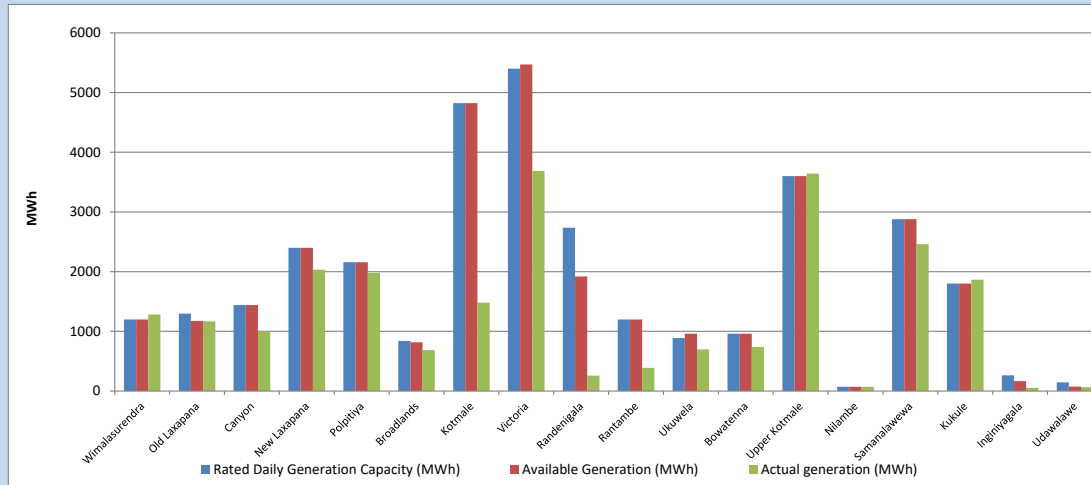


Plant availability is recorded at 6.00 am on

November 11, 2023

7. Major Hydro Plant Dispatch

November 10, 2023

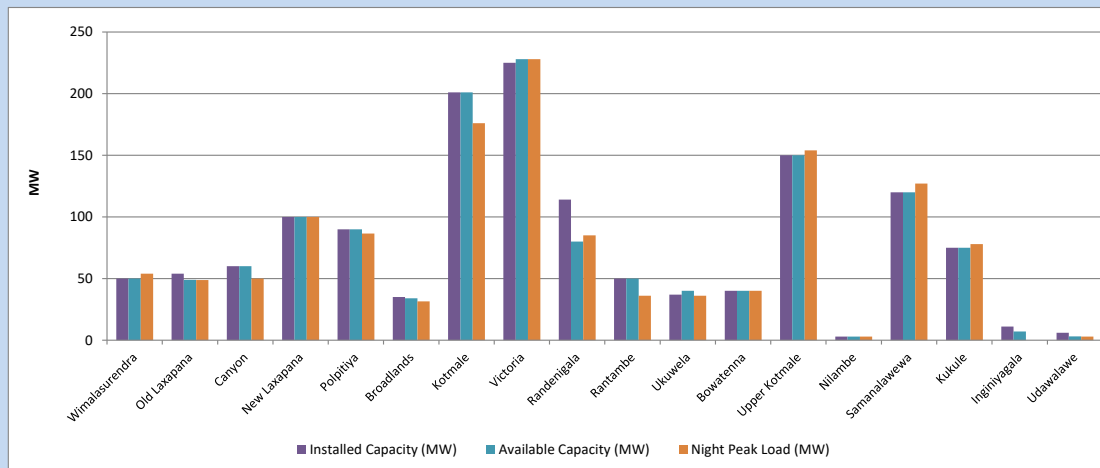


Available Generation is estimated based on plant availability at 6.00am on November 11, 2023
Broadlands power plant is operating in the Commissioning Stage

November 11, 2023

8. Major Hydro Plant Loading at Night Peak

November 10, 2023



Plant availability is recorded at 6.00 am on November 11, 2023
Broadlands power plant is operating in the Commissioning Stage

November 11, 2023

9. Summary of Major Plant performance

Table 05

Plant	Installed Capacity (MW)	Plant Availability (MW)	Night peak Load (MW)	Plant Dispatch (MWh)
Wimalasurendra	50	50	54	1,283
Old Laxapana Canyon	54	49	49	1,168
New Laxapana	60	60	50	999
Polpitiya	100	100	100	2,034
Broadlands	90	90	87	1,980
Kotmale	35	34	32	686
Victoria	201	201	176	1,480
Randenigala	225	228	228	3,687
Rantambe	114	80	85	257
Ukuwela	50	50	36	389
Bowatenna	37	40	36	698
Upper Kotmale	40	40	40	737
Nilambe	150	150	154	3,642
Samanalawewa	3	3	3	71
Kukule	120	120	127	2,461
Inginiyagala	75	75	78	1,866
Udawalawe	11	7	0	55
Puttalam Coal I	6	3	3	67
Puttalam Coal II	270	270	268	4,575
Puttalam Coal III	270	270	198	4,119
KPS Small GTs	270	0	0	0
KPS GT 7	64	16	0	0
KCCP	115	115	0	0
Sapugaskanda A	161	153	0	0
Sapugaskanda B	70	49	0	0
Uthura Janani	70	54	0	0
Barge CEB	26	16	15	56
CEB-Hambantota	60	60	59	286
CEB-Mathugama	30	20	0	0
ACE Matara	20	13	0	0
Asia Power	24	24	24	25
KCCPS -2	50	0	0	0
West Coast	163	155	0	0
Nothern Power	270	270	0	0
ACE Embilipitiya	36	0	0	0
Total	93	93	0	0
Total	3,483	2,958	2,007	36,089

Plant availability is the availability recorded at 6 am on

November 11, 2023

10. Contribution to the Night Peak in MW

November 10, 2023

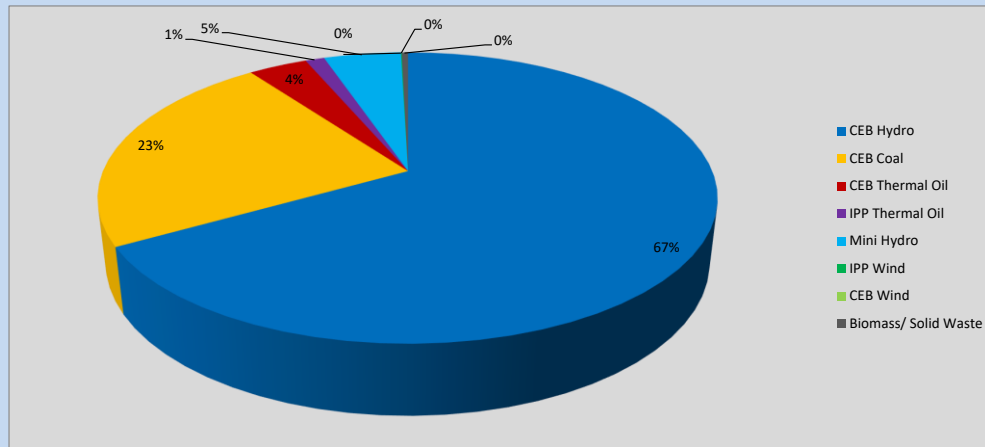


Table 06

CEB Hydro	1351	MW
CEB Coal	466	MW
CEB Thermal Oil	74	MW
IPP Thermal Oil	24	MW
Mini Hydro (Telemetered)	97	MW
IPP Wind	1	MW
CEB Wind	0	MW
Biomass/ Solid Waste	8	MW

Recorded Peak Demand Data

Table 07

Night Peak*	2,021	MW
Day Peak Maximum Demand	1,806	MW
Day Peak Minimum Demand	1,493	MW
Off Peak Minimum Demand	1,052	MW

Above figures are excluding contribution from roof top solar, non telemetered solar and mini hydro plants

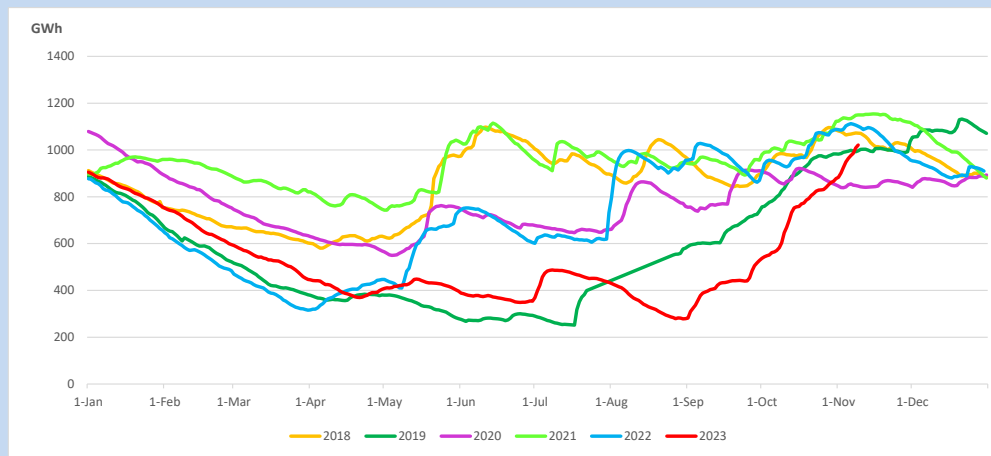
Reservoir Levels -

as at 06.00 Hr on November 11, 2023

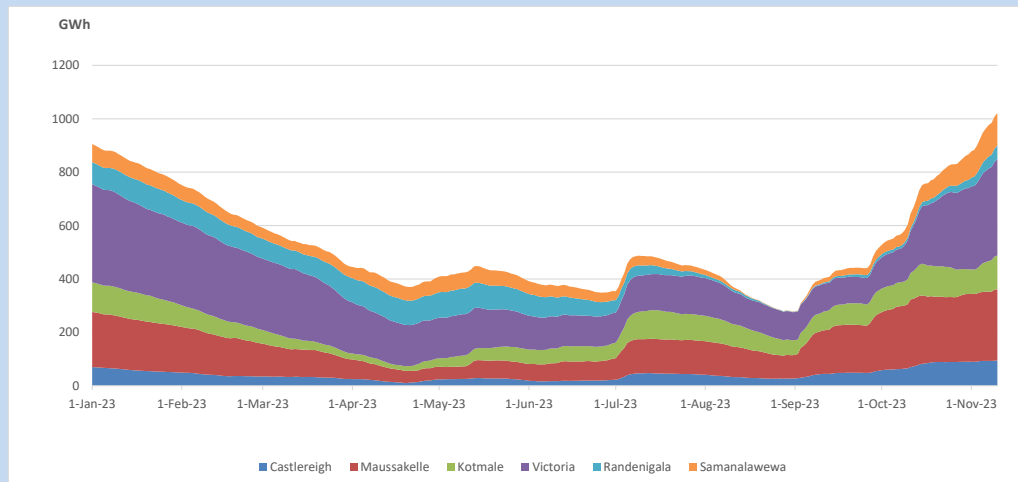


Total Reservoir Level 1021.2 GWh
 % of Total capacity 84.7%

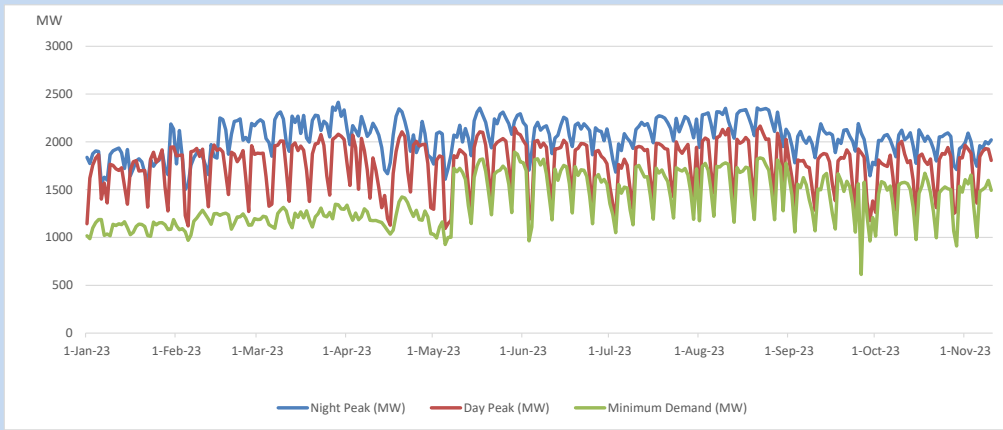
11. Comparison of Total Reservoir Storage Levels with Past Years



12. Variation of Major Hydro Reservoir Levels in the current year (GWh)



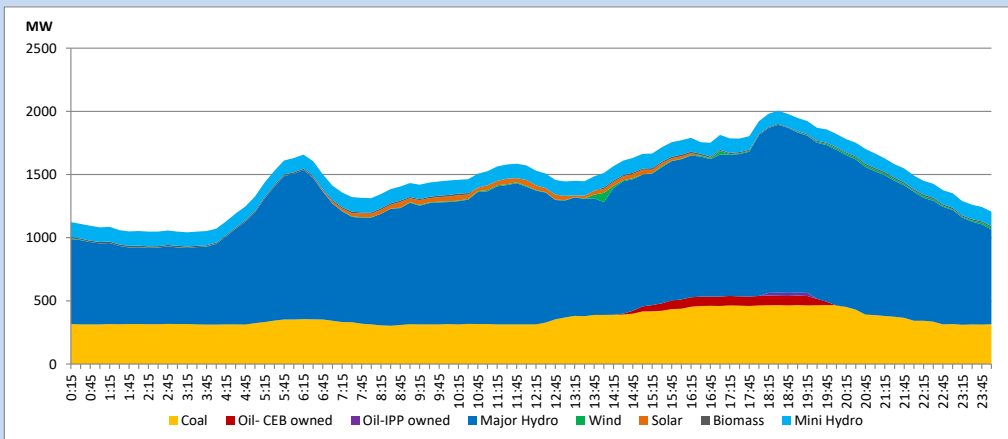
13. Variation of Demand during the current year



The above figures are excluding contribution from roof top solar, non telemetered solar and mini hydro plants

14. Daily Load Curve

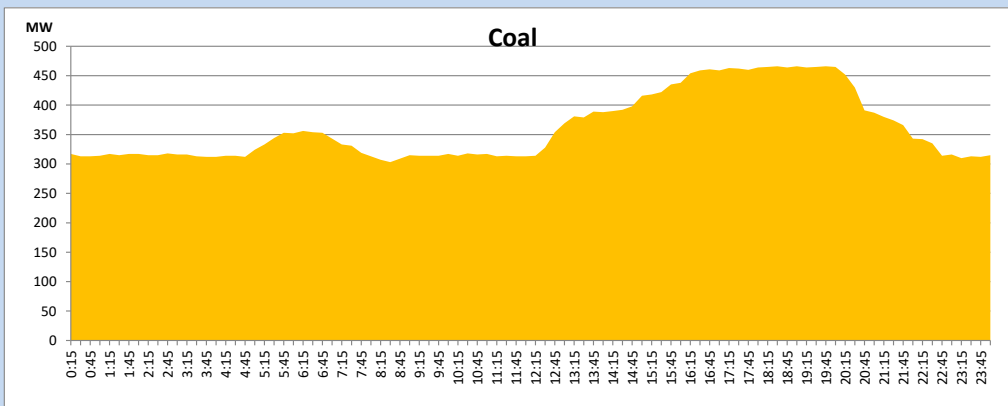
November 10, 2023



Solar and wind data is based on Telemetered Power Stations only

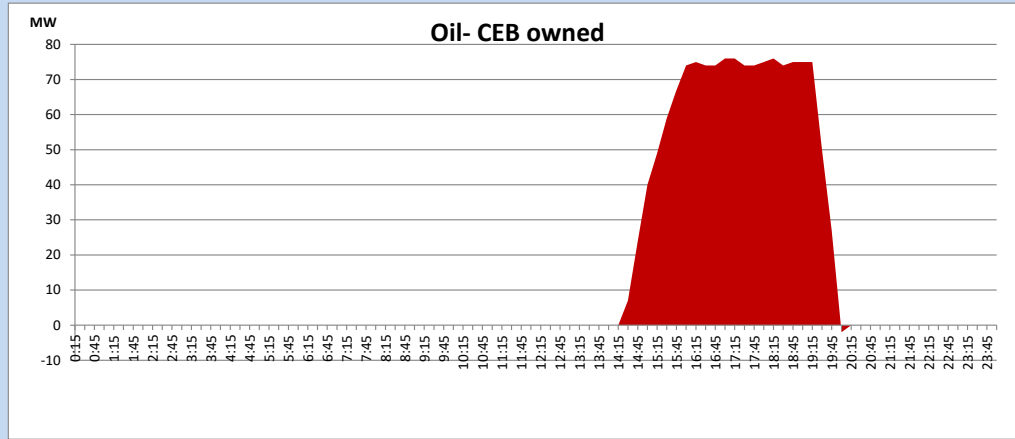
Coal Generation during

November 10, 2023



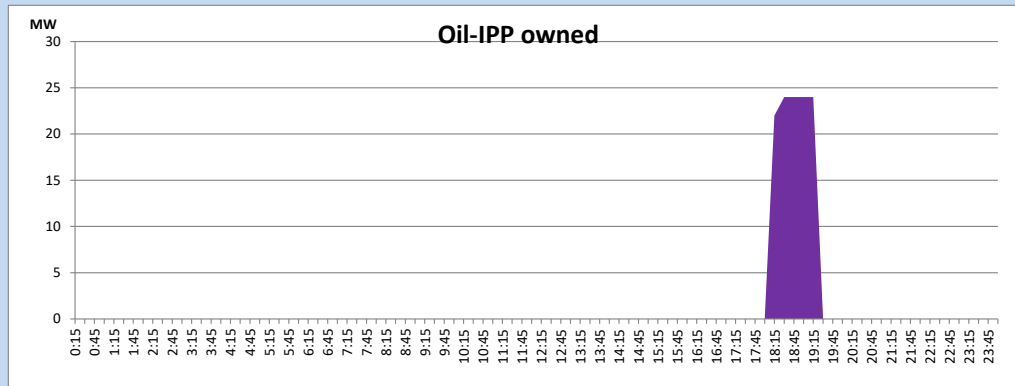
CEB Oil Plant Generation during

November 10, 2023



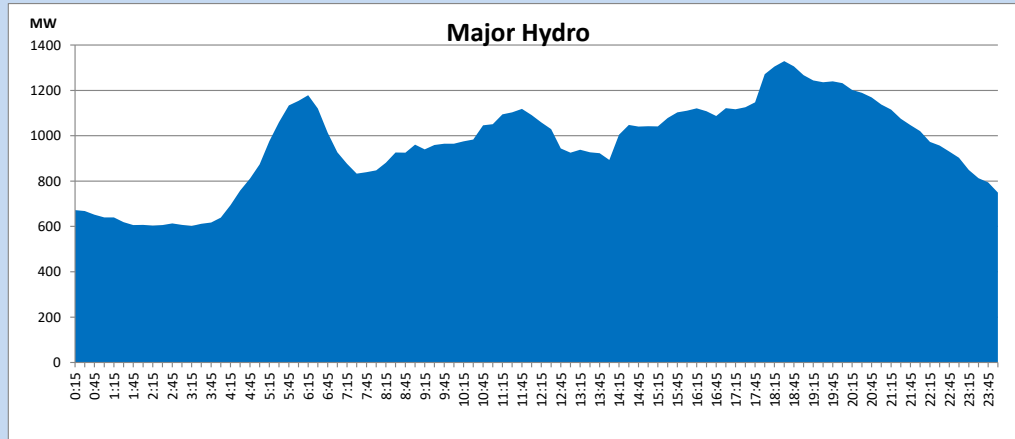
IPP Oil Plant Generation during

November 10, 2023



Major Hydro Generation during

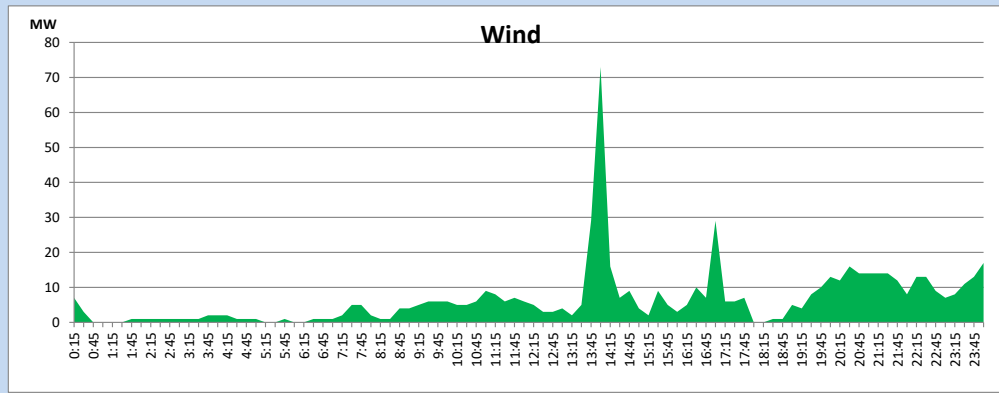
November 10, 2023



Wind Generation during

November 10, 2023

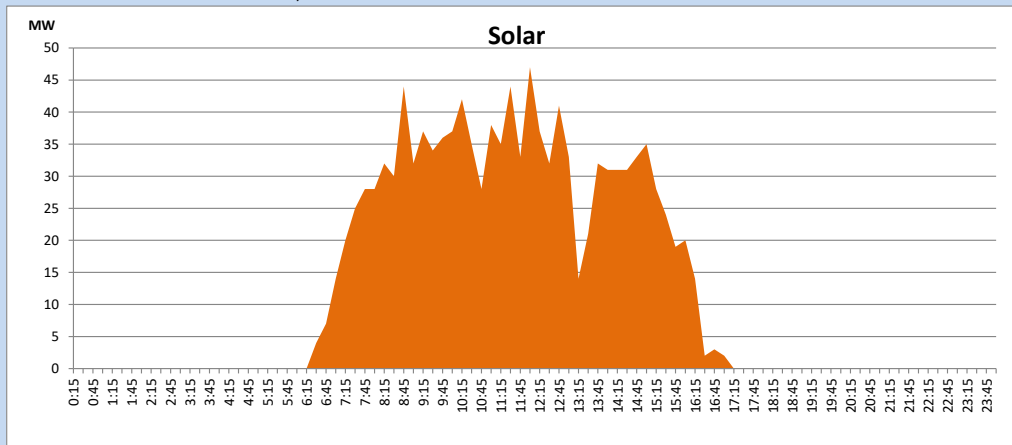
Based on Telemetered Power Stations only



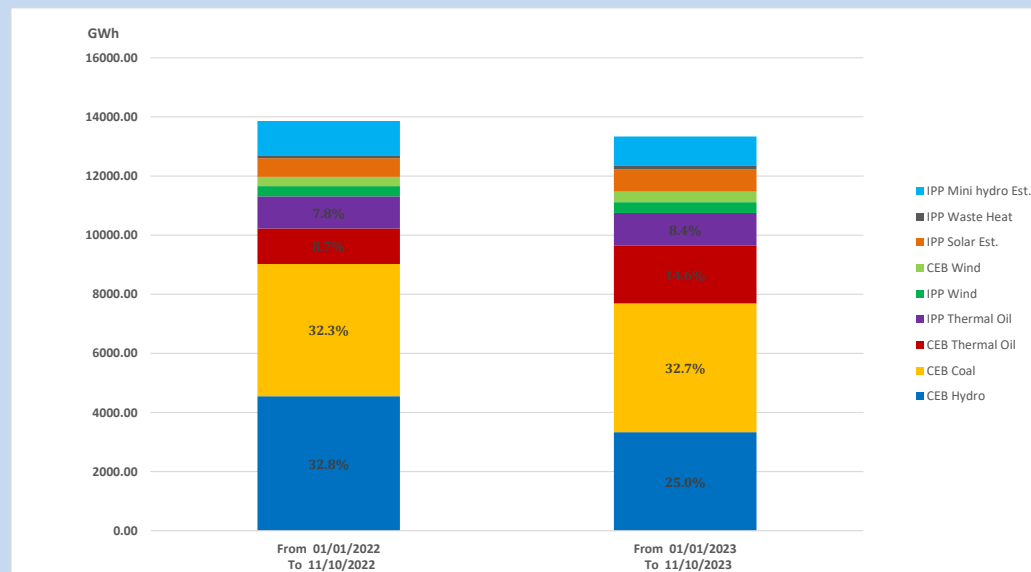
Solar Generation during

November 10, 2023

Based on Telemetered Power Stations only



15. Cumulative Dispatch Comparison with Last Year



Cumulative dispatch
 From 01/01/2022 To 11/10/2022
 From 01/01/2023 To 11/10/2023

13859 GWh
 13340 GWh

The above figures are including contribution from roof top solar, non telemetered solar and mini hydro plants (figures have been adjusted based on the data from the CEB monthly review reports.)

Thermal Plant Fuel types

Table 08

Power Station	Primary Fuel
CEB Thermal	
Sapugaskanda 1	Heavy Fuel
Sapugaskanda 2	Heavy Fuel
Kelanitissa Small Gas Turbines	Auto Diesel
GT 7 - Kelanitissa	Auto Diesel
Kelanitissa CCY	Naphtha or Diesel
Lakvijaya 1	Coal
Lakvijaya 2	Coal
Lakvijaya 3	Coal
Uthuru Janani	Heavy Fuel
Barge CEB	Heavy Fuel
KCCPS -2	Auto Diesel

Power Station	Primary Fuel
Private Thermal	
West Coast	Auto Diesel / Heavy Fuel
ACE Matara	Heavy Fuel
ACE Embilipitiya	Heavy Fuel

Major Incidents reported during the day

November 10, 2023

- 1) New Habarana - Valachchena 132kV cct tripped and A/R from both ends at 6:57hrs due to the operation of distance protection.
- 2) WPS unit 02 tripped at 16:27hrs rejecting 27MW from the system. At the same time Badulla-Nuwara Eliya-Old Laxapana both ccts tripped from Old Laxapana end only due to the operation of distance protection causing Nuwara Eliya, Badulla, Monaragala, Ampara, Vavunathiv and Mahiyanganaya GSSs to be dead. All affected GSSs and feeders were normalized by 16:45hrs. WPS unit 02 resumed generation at 17:14hrs.
- 3) Kukule pond and Upper Kothmale pond spilling continues to the present hour.