

Generation and Reservoirs Statistics

November 9, 2023



PUBLIC UTILITIES COMMISSION OF SRI LANKA

1. Daily Generation Mix in MWh

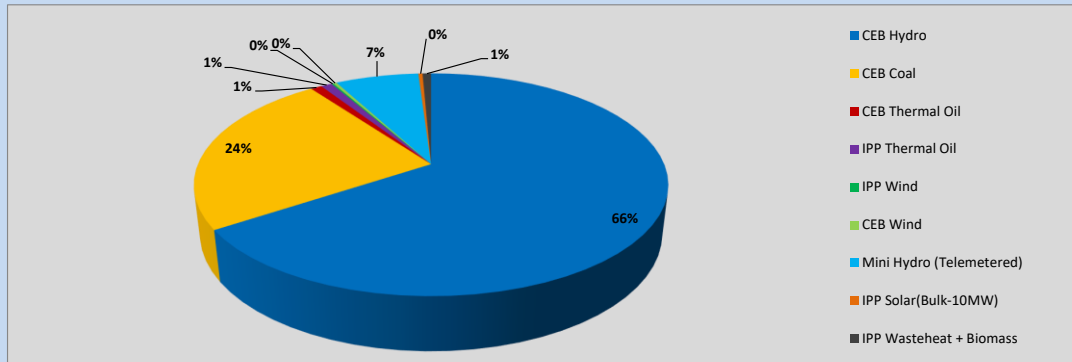


Table 01

	Generation (MWh)
CEB Hydro	24,544
CEB Coal	9,031
CEB Thermal Oil	337
IPP Thermal Oil	337
IPP Wind	57
CEB Wind	108
Mini Hydro (Telemetered)	2,540
IPP Solar (Bulk)	127
IPP Waste heat + Biomass	260
Total Generation (Excluding estimated figures)	37,341
* Estimated unserved energy	0
* Estimated Mini Hydro (Non telemetered)	2330
* Estimated IPP Solar PV (Bulk 1-10MW)	304
* Estimated Solar Roof Top PV	1640
Total Generation (Including estimated figures)	41,615

* Estimated figures of CEB generation report

Table 02

	Installed Capacity (MW)
CEB Hydro	1409
CEB Coal	810
CEB Thermal Oil	781
IPP Thermal Oil (West Coast, ACE Matara and ACE Embilipitiya)	387
IPP Wind	148
CEB Wind	100
Mini Hydro	416
IPP Waste heat + Biomass	50
IPP Solar	130
Rooftop Solar* (Ordinary)	267
Rooftop Solar* (LT Bulk)	256
Rooftop Solar* (HT Bulk)	61

Data Source - Monthly Review Report [May-2023]

2. Cumulative Dispatch

Following data excludes the contribution from roof top solar, non telemetered solar and mini hydro plants

Table 03 - Current Month

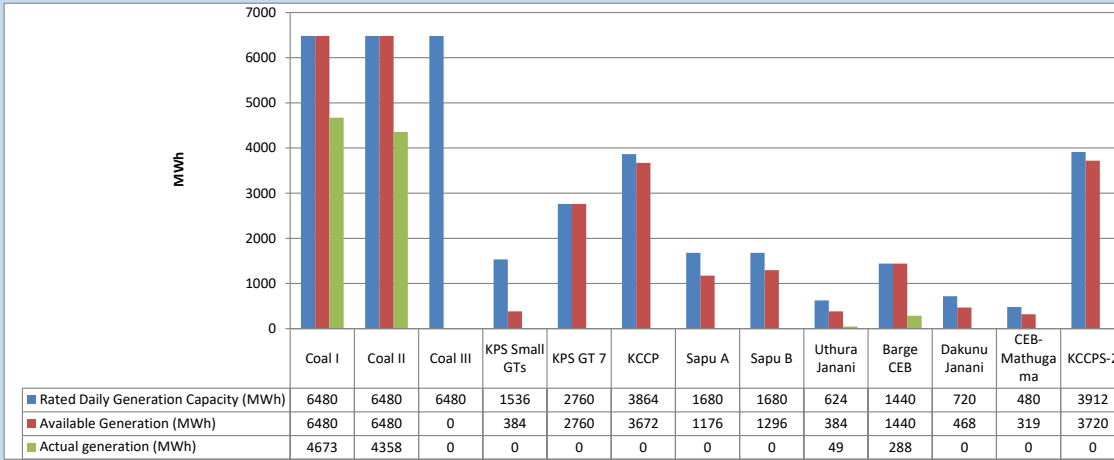
Category	Dispatch (GWh)	
CEB Hydro	206	63.93%
CEB Coal	84	26.21%
CEB Thermal Oil	2	0.72%
IPP Thermal	1	0.26%
SPP Wind	1	0.34%
CEB Wind	1	0.41%
Mini Hydro (Telemetered)	22	6.75%
IPP Solar(Bulk-10MW)	2	0.66%
IPP Waste heat + BMP	2	0.73%
Total	322	

Table 04 - Current Year

Category	Dispatch (GWh)	
CEB Hydro	3,320	27.69%
CEB Coal	4,360	36.36%
CEB Thermal Oil	1,956	16.31%
IPP Thermal	1,115	9.30%
SPP Wind	348	2.90%
CEB Wind	358	2.98%
Mini Hydro (Telemetered)	331	2.76%
IPP Solar(Bulk-10MW)	93	0.78%
IPP Waste heat	110	0.92%
Total	11,991	

3. CEB owned Thermal Plant Dispatch

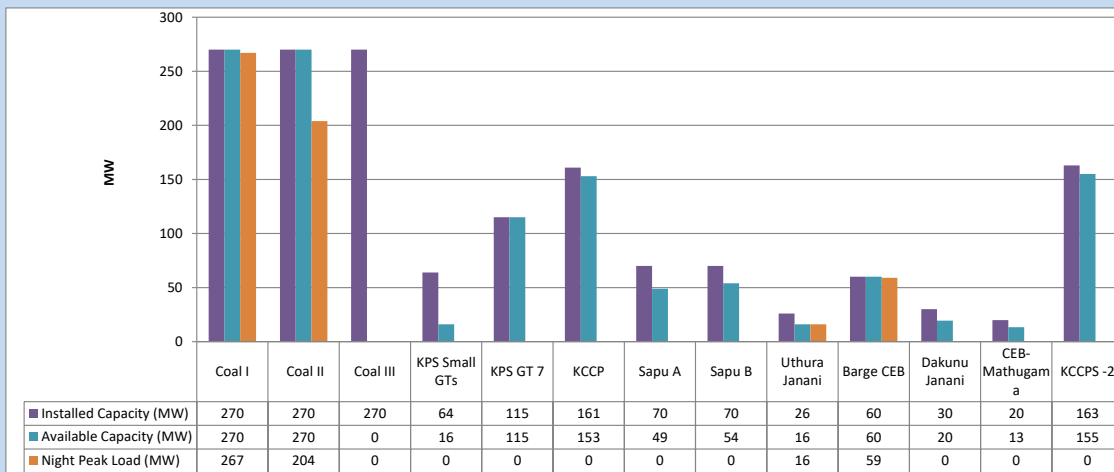
November 9, 2023



Available Generation is estimated based on plant availability at 6.00am on

November 10, 2023

4. CEB owned Thermal Plant Loading at the Night Peak

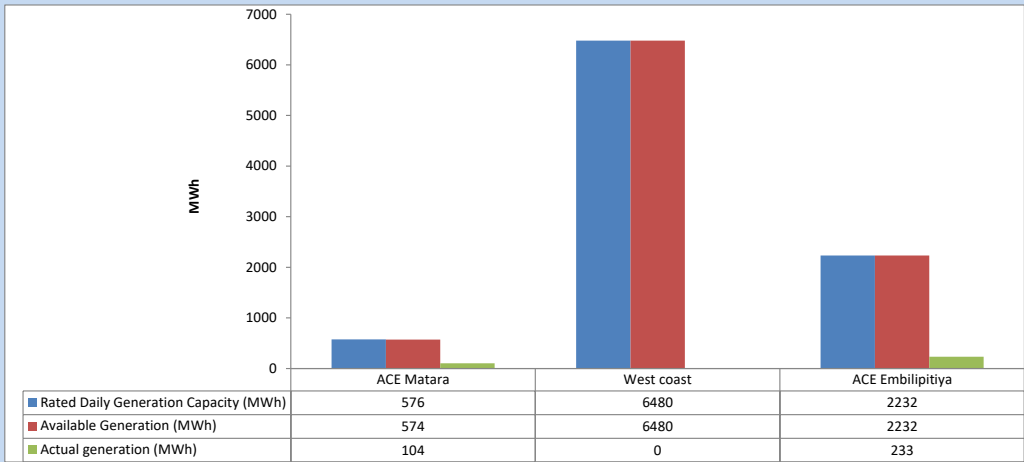


Plant availability is recorded at 6.00 am on

November 10, 2023

5. IPP owned Thermal Plant Dispatch

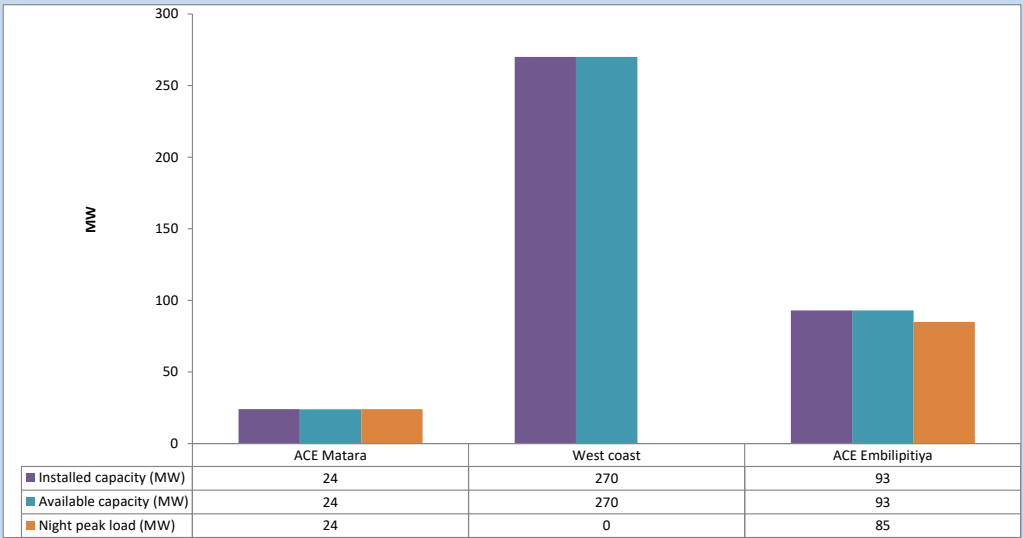
November 9, 2023



Available Generation is estimated based on plant availability at 6.00am on

November 10, 2023

6. IPP owned Thermal Plant Loading at the Night Peak

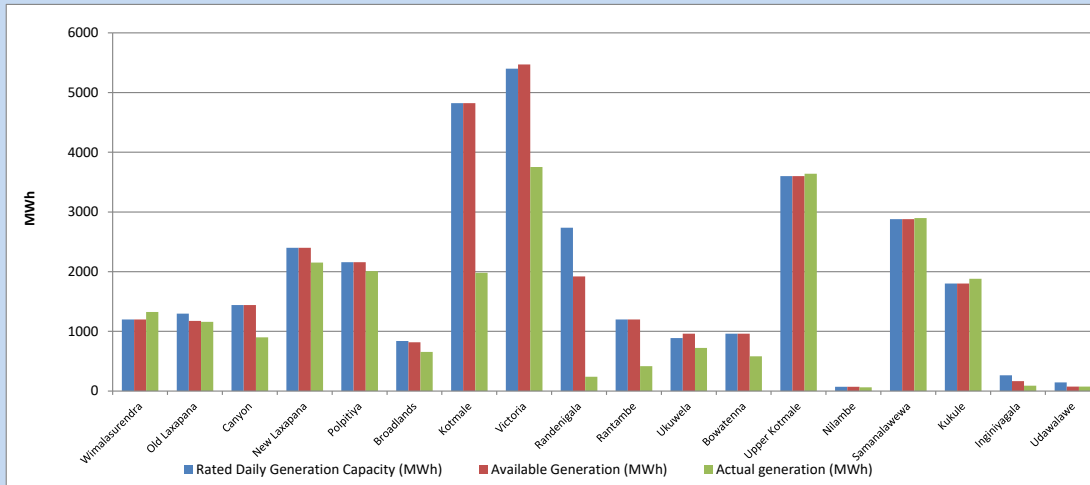


Plant availability is recorded at 6.00 am on

November 10, 2023

7. Major Hydro Plant Dispatch

November 9, 2023

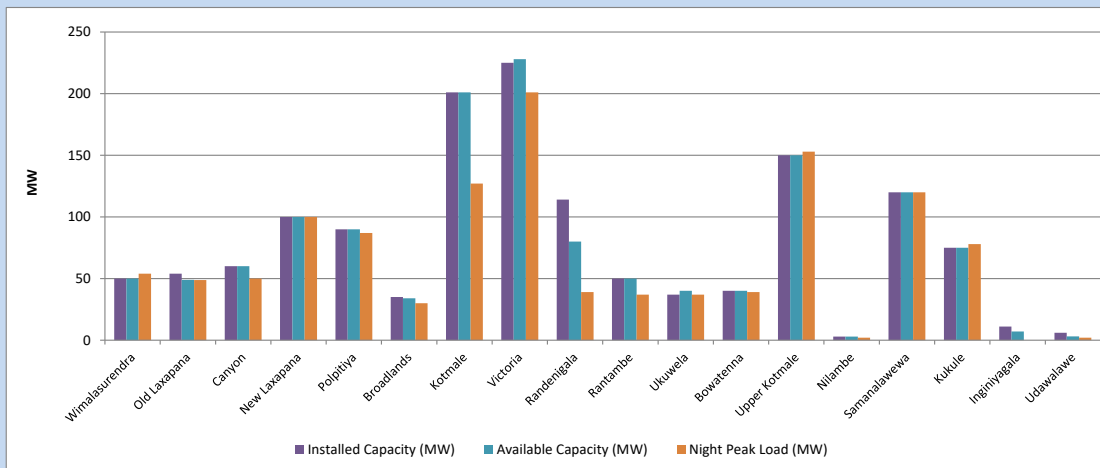


Available Generation is estimated based on plant availability at 6.00am on November 10, 2023
Broadlands power plant is operating in the Commissioning Stage

November 10, 2023

8. Major Hydro Plant Loading at Night Peak

November 9, 2023



Plant availability is recorded at 6.00 am on November 10, 2023
Broadlands power plant is operating in the Commissioning Stage

9. Summary of Major Plant performance

Table 05

Plant	Installed Capacity	Plant Availability	Night peak Load	Plant Dispatch
	(MW)	(MW)	(MW)	(MWh)
Wimalasurendra	50	50	54	1,326
Old Laxapana	54	49	49	1,159
Canyon	60	60	50	900
New Laxapana	100	100	100	2,152
Polpitiya	90	90	87	2,010
Broadlands	35	34	30	656
Kotmale	201	201	127	1,980
Victoria	225	228	201	3,754
Randenigala	114	80	39	240
Rantambe	50	50	37	416
Ukuwela	37	40	37	723
Bowatenna	40	40	39	581
Upper Kotmale	150	150	153	3,641
Nilambe	3	3	2	63
Samanalawewa	120	120	120	2,898
Kukule	75	75	78	1,881
Inginiyagala	11	7	0	89
Udawalawe	6	3	2	75
Puttalam Coal I	270	270	267	4,673
Puttalam Coal II	270	270	204	4,358
Puttalam Coal III	270	0	0	0
KPS Small GTs	64	16	0	0
KPS GT 7	115	115	0	0
KCCP	161	153	0	0
Sapugaskanda A	70	49	0	0
Sapugaskanda B	70	54	0	0
Uthura Janani	26	16	16	49
Barge CEB	60	60	59	288
CEB-Hambantota	30	20	0	0
CEB-Mathugama	20	13	0	0
ACE Matara	24	24	24	104
Asia Power	50	0	0	0
KCCPS -2	163	155	0	0
West Coast	270	270	0	0
Nothern Power	36	0	0	0
ACE Embilipitiya	93	93	85	233
Total	3,483	2,958	1,983	37,341

Plant availability is the availability recorded at 6 am on

November 10, 2023

10. Contribution to the Night Peak in MW

November 9, 2023

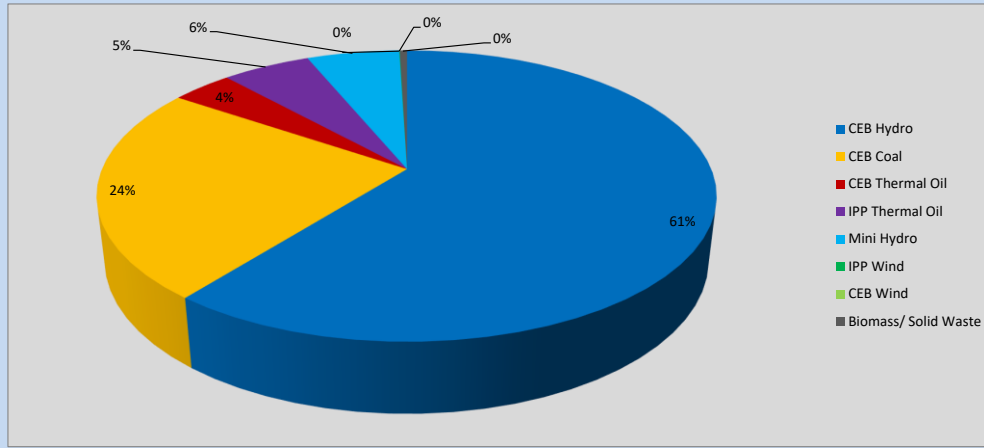


Table 06

CEB Hydro	1202	MW
CEB Coal	471	MW
CEB Thermal Oil	75	MW
IPP Thermal Oil	109	MW
Mini Hydro (Telemetered)	114	MW
IPP Wind	0.6	MW
CEB Wind	0	MW
Biomass/ Solid Waste	9	MW

Recorded Peak Demand Data

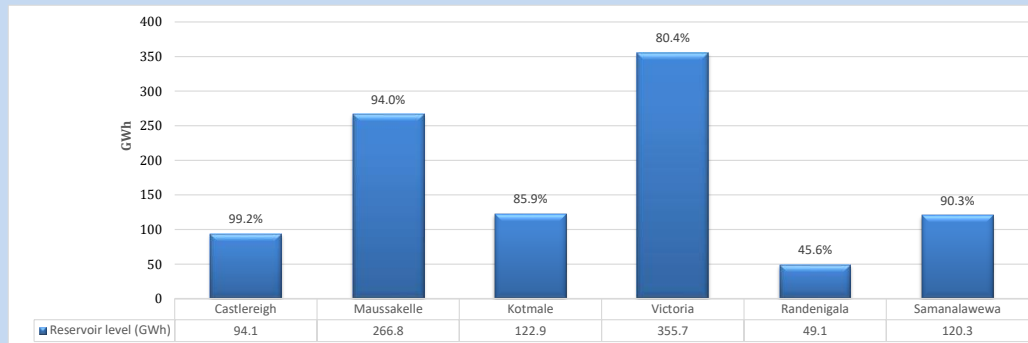
Table 07

Night Peak*	1,980	MW
Day Peak Maximum Demand	1,924	MW
Day Peak Minimum Demand	1,599	MW
Off Peak Minimum Demand	1,083	MW

Above figures are excluding contribution from roof top solar, non telemetered solar and mini hydro plants

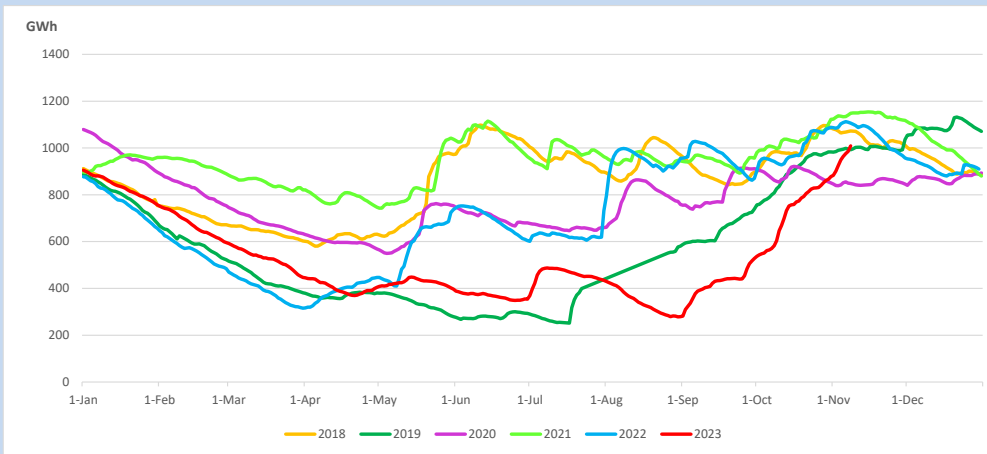
Reservoir Levels -

as at 06.00 Hr on November 10, 2023

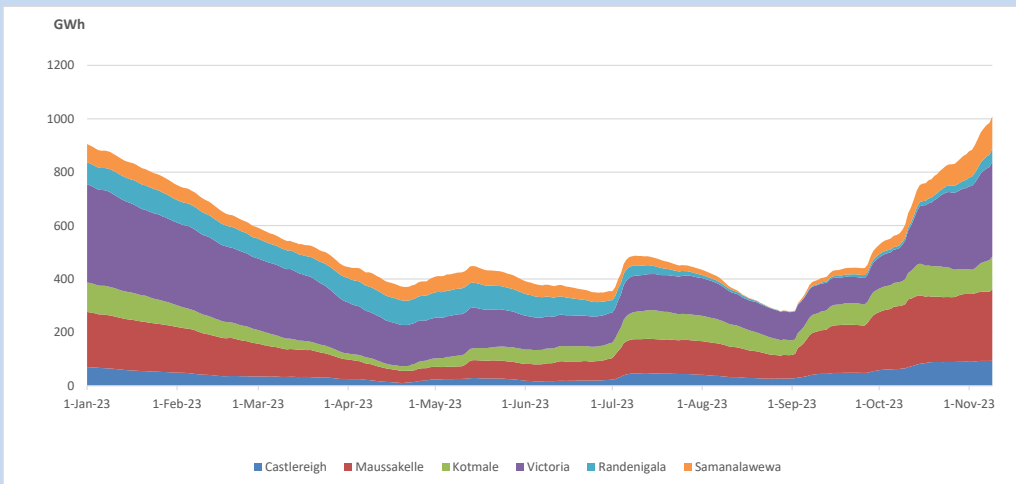


Total Reservoir Level 1008.9 GWh
 % of Total capacity 83.7%

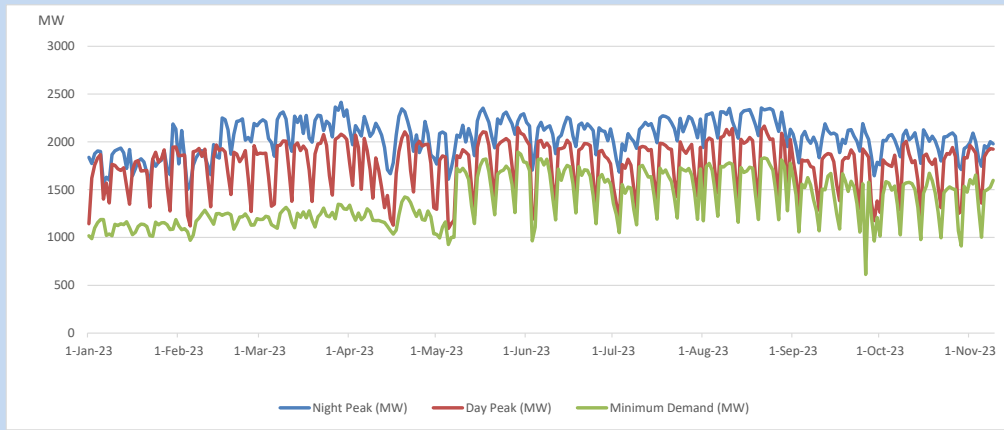
11. Comparison of Total Reservoir Storage Levels with Past Years



12. Variation of Major Hydro Reservoir Levels in the current year (GWh)



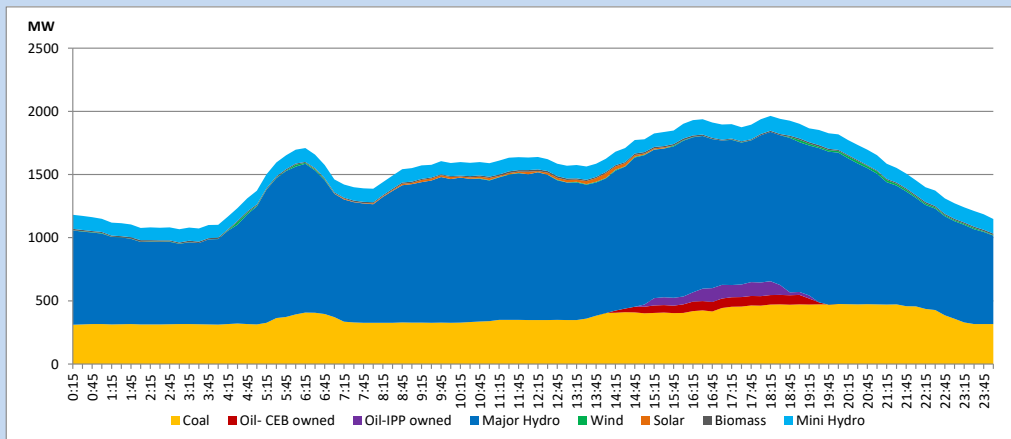
13. Variation of Demand during the current year



The above figures are excluding contribution from roof top solar, non telemetered solar and mini hydro plants

14. Daily Load Curve

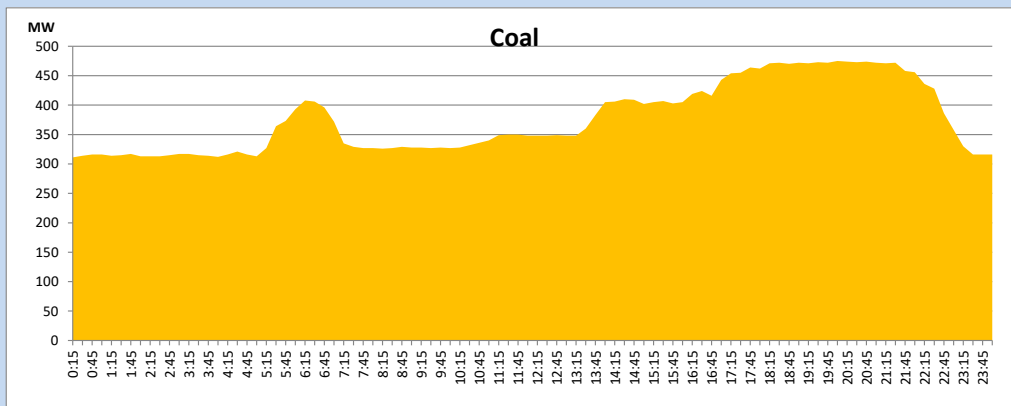
November 9, 2023



Solar and wind data is based on Telemetered Power Stations only

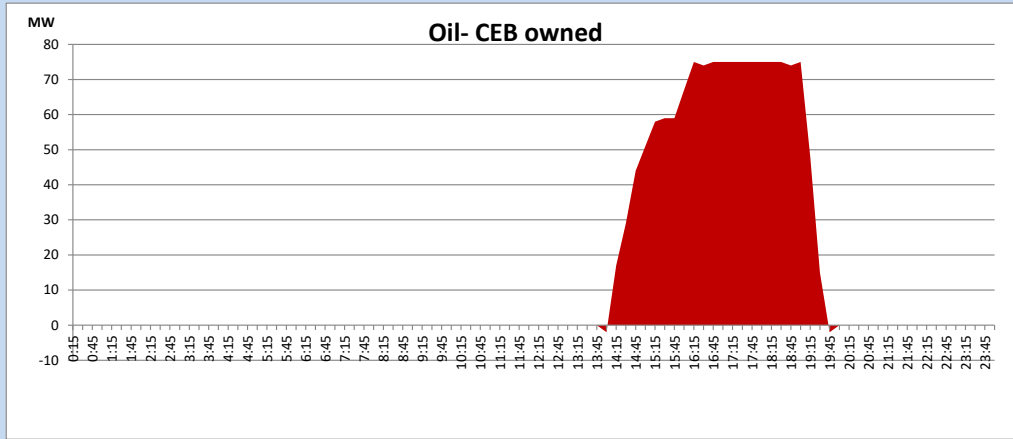
Coal Generation during

November 9, 2023



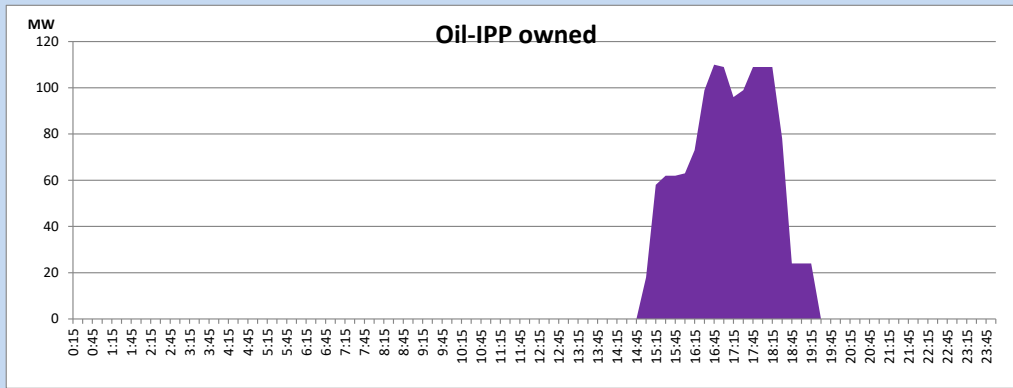
CEB Oil Plant Generation during

November 9, 2023



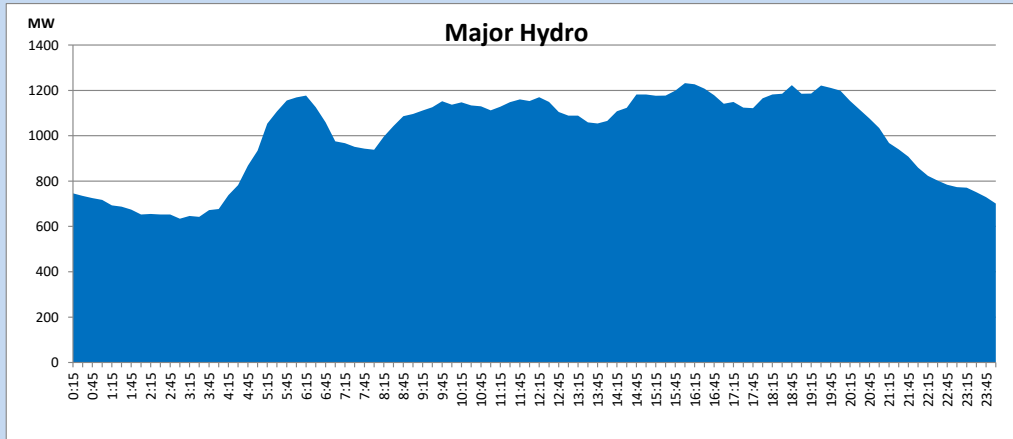
IPP Oil Plant Generation during

November 9, 2023



Major Hydro Generation during

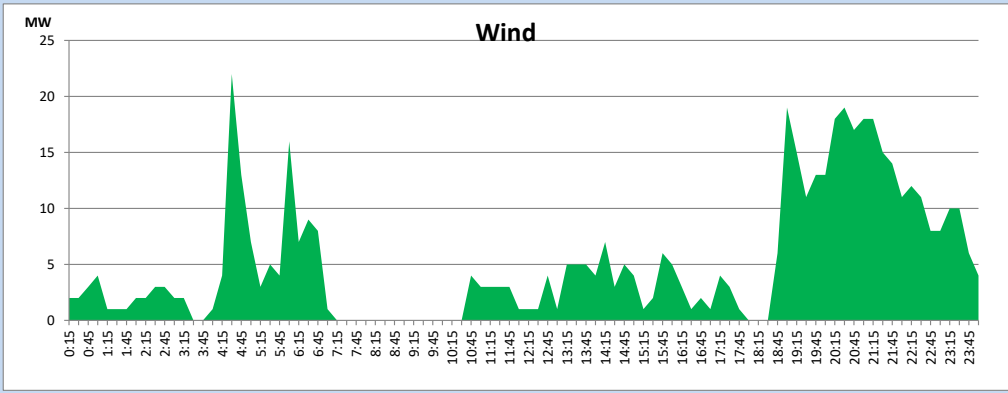
November 9, 2023



Wind Generation during

November 9, 2023

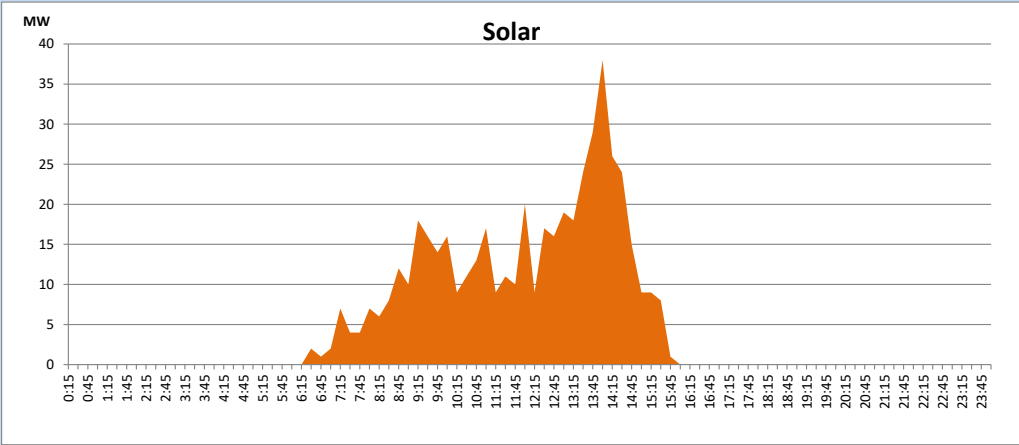
Based on Telemetered Power Stations only



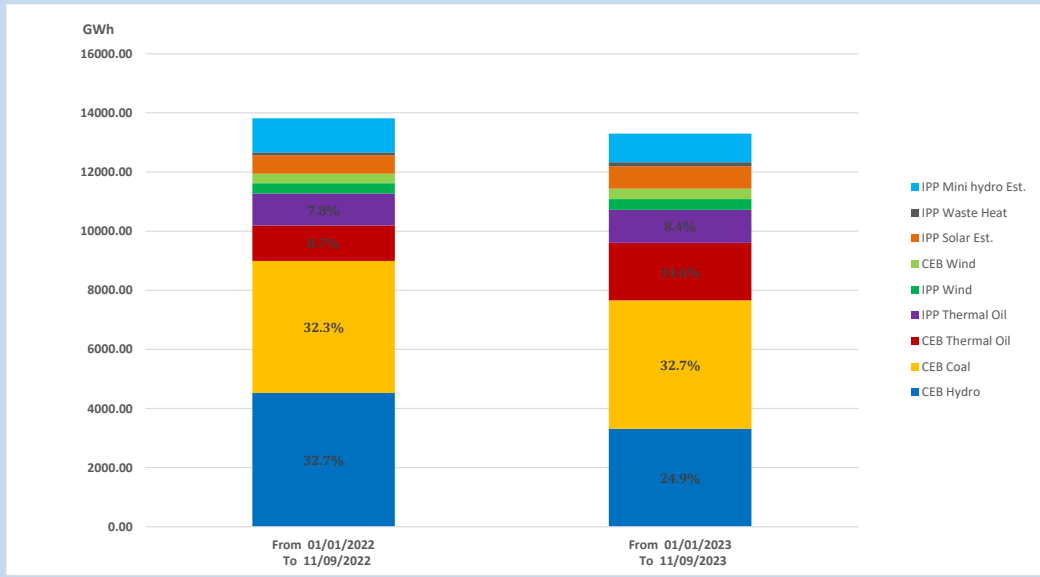
Solar Generation during

November 9, 2023

Based on Telemetered Power Stations only



15. Cumulative Dispatch Comparison with Last Year



Cumulative dispatch

From 01/01/2022 To 11/09/2022

13817 GWh

From 01/01/2023 To 11/09/2023

13299 GWh

The above figures are including contribution from roof top solar, non telemetered solar and mini hydro plants (figures have been adjusted based on the data from the CEB monthly review reports.)

Thermal Plant Fuel types

Table 08

Power Station	Primary Fuel
CEB Thermal	
Sapugaskanda 1	Heavy Fuel
Sapugaskanda 2	Heavy Fuel
Kelanitissa Small Gas Turbines	Auto Diesel
GT 7 - Kelanitissa	Auto Diesel
Kelanitissa CCY	Naphtha or Diesel
Lakvijaya 1	Coal
Lakvijaya 2	Coal
Lakvijaya 3	Coal
Uthuru Janani	Heavy Fuel
Barge CEB	Heavy Fuel
KCCPS -2	Auto Diesel

Power Station	Primary Fuel
Private Thermal	
West Coast	Auto Diesel / Heavy Fuel
ACE Matara	Heavy Fuel
ACE Embilipitiya	Heavy Fuel

Major Incidents reported during the day

November 9, 2023

- 1) Norechhole wind farm 220/33kV T/F tripped from both ends at 11:53hrs with an indication of PRD trip. The T/F was normalized at 18:29hr
- 2) LVPS availability limited to 202MW (net) from 14:35hrs due to coal mill feeder issue. LVPS unit 01 reached full load at 18:10hrs.
- 3) Uthuru Janani unit 01 and 02 failed to start at 14:35hrs due to fuel atomization issue. Uthuru Janani resumed generation at 15:49hrs.
- 4) Kukule P/S – Mathugama 132kV cct 02 tripped from both ends at 15:07hrs due to the operation of differential protection. Kukule P/S - Mathugama 132kV cct 02 was normalized at 15:16hrs.
- 5) Athurugiriya – Polpitiya P/S 132kV cct tripped and A/R only from Polpitiya P/S end at 15:45hrs due to the operation of distance protection.
- 6) Kegalle – Thulhiriya 132kV cct 01 & 02 tripped from both ends at 15:46hrs due to the operation of distance protection causing Kegalle GSS to be dead. Kegalle –Thulhiriya 132kV cct 01 & 02 were normalized at 16:06hrs and all affected feeders were normalized by 16:21hrs.
- 7) Kukule pond and Upper Kothmale pond spilling continues to the present hour.