

Generation and Reservoirs Statistics

November 8, 2023



PUBLIC UTILITIES COMMISSION OF SRI LANKA

1. Daily Generation Mix in MWh

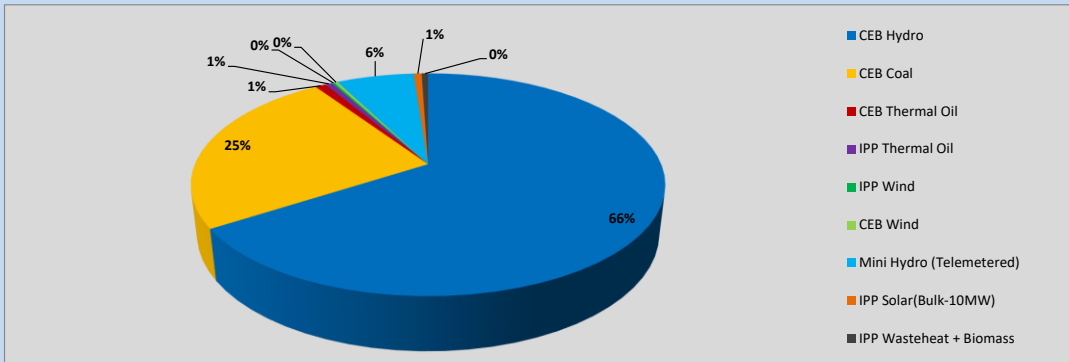


Table 01

	Generation (MWh)
CEB Hydro	24,388
CEB Coal	9,138
CEB Thermal Oil	320
IPP Thermal Oil	212
IPP Wind	78
CEB Wind	102
Mini Hydro (Telemetered)	2,339
IPP Solar (Bulk)	243
IPP Waste heat + Biomass	193
Total Generation (Excluding estimated figures)	37,013
* Estimated unserved energy	0
* Estimated Mini Hydro (Non telemetered)	2531
* Estimated IPP Solar PV (Bulk 1-10MW)	304
* Estimated Solar Roof Top PV	1640
Total Generation (Including estimated figures)	41,488

* Estimated figures of CEB generation report

Table 02

	Installed Capacity (MW)
CEB Hydro	1409
CEB Coal	810
CEB Thermal Oil	781
IPP Thermal Oil (West Coast, ACE Matara and ACE Embilipitiya)	387
IPP Wind	148
CEB Wind	100
Mini Hydro	416
IPP Waste heat + Biomass	50
IPP Solar	130
Rooftop Solar* (Ordinary)	267
Rooftop Solar* (LT Bulk)	256
Rooftop Solar* (HT Bulk)	61

Data Source - Monthly Review Report [May-2023]

2. Cumulative Dispatch

Following data excludes the contribution from roof top solar, non telemetered solar and mini hydro plants

Table 03 - Current Month

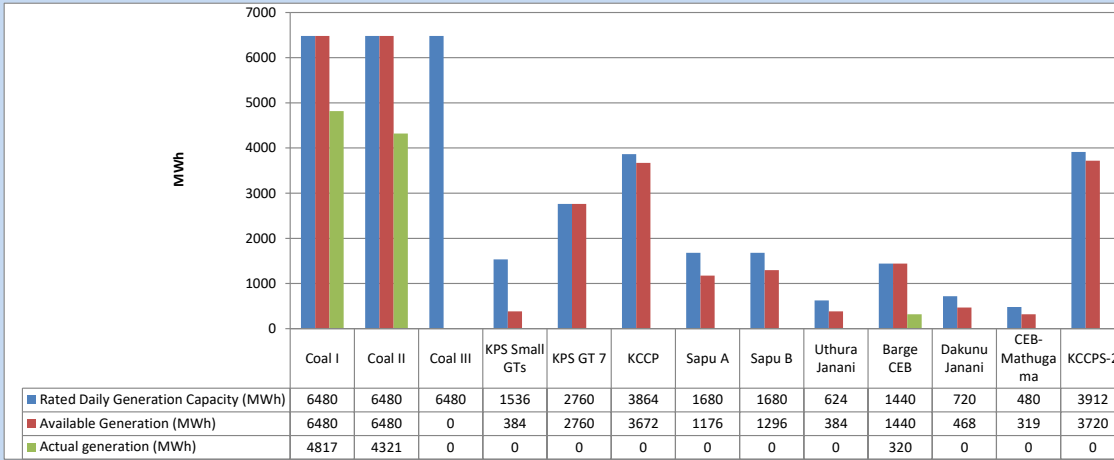
Category	Dispatch (GWh)	
CEB Hydro	181	63.69%
CEB Coal	75	26.47%
CEB Thermal Oil	2	0.69%
IPP Thermal	1	0.18%
SPP Wind	1	0.37%
CEB Wind	1	0.42%
Mini Hydro (Telemetered)	19	6.74%
IPP Solar(Bulk-10MW)	2	0.70%
IPP Waste heat + BMP	2	0.73%
Total	284	

Table 04 - Current Year

Category	Dispatch (GWh)	
CEB Hydro	3,295	27.57%
CEB Coal	4,351	36.40%
CEB Thermal Oil	1,956	16.36%
IPP Thermal	1,114	9.32%
SPP Wind	348	2.91%
CEB Wind	357	2.99%
Mini Hydro (Telemetered)	329	2.75%
IPP Solar(Bulk-10MW)	93	0.78%
IPP Waste heat	110	0.92%
Total	11,953	

3. CEB owned Thermal Plant Dispatch

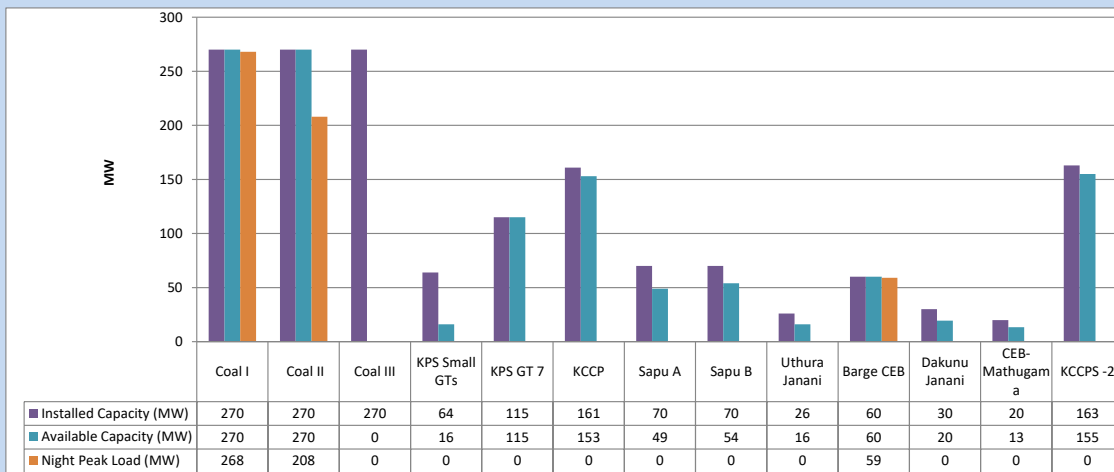
November 8, 2023



Available Generation is estimated based on plant availability at 6.00am on

November 9, 2023

4. CEB owned Thermal Plant Loading at the Night Peak

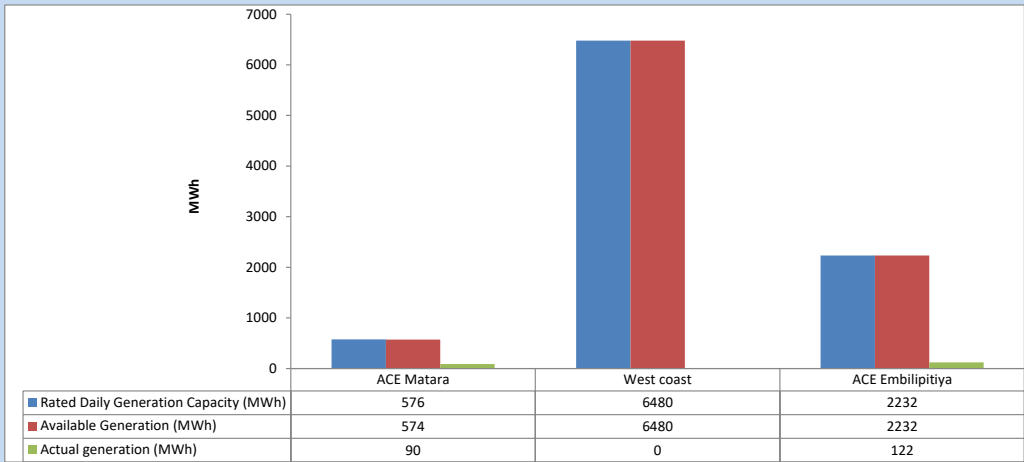


Plant availability is recorded at 6.00 am on

November 9, 2023

5. IPP owned Thermal Plant Dispatch

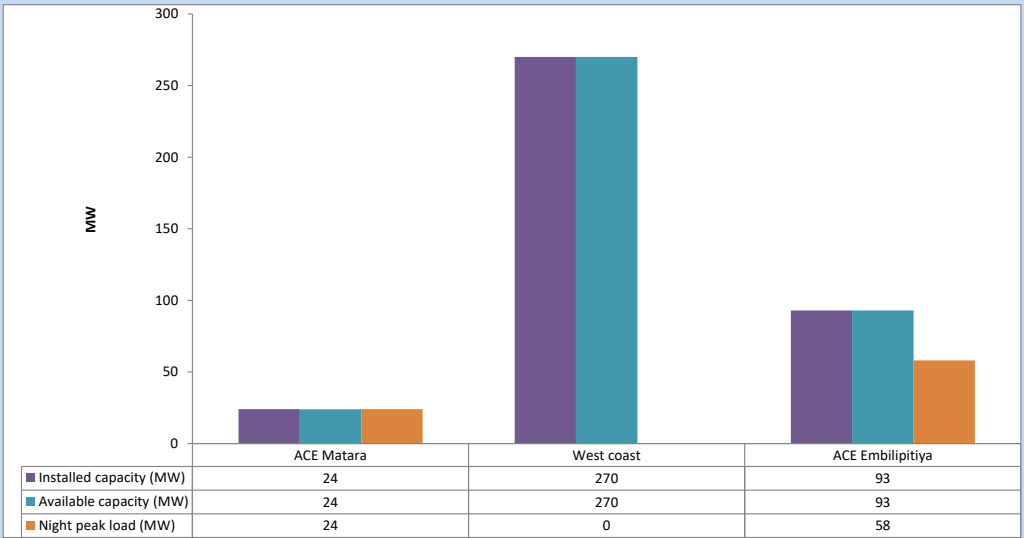
November 8, 2023



Available Generation is estimated based on plant availability at 6.00am on

November 9, 2023

6. IPP owned Thermal Plant Loading at the Night Peak

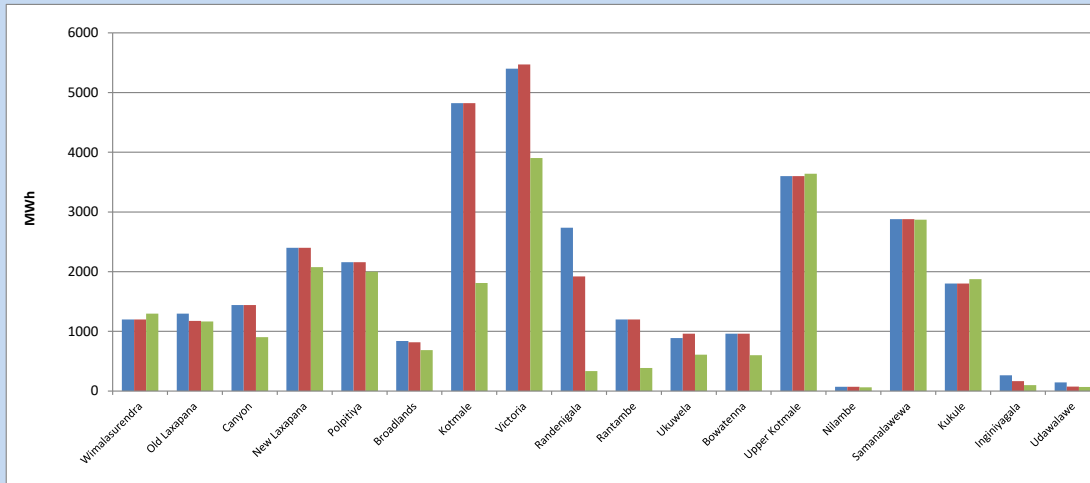


Plant availability is recorded at 6.00 am on

November 9, 2023

7. Major Hydro Plant Dispatch

November 8, 2023

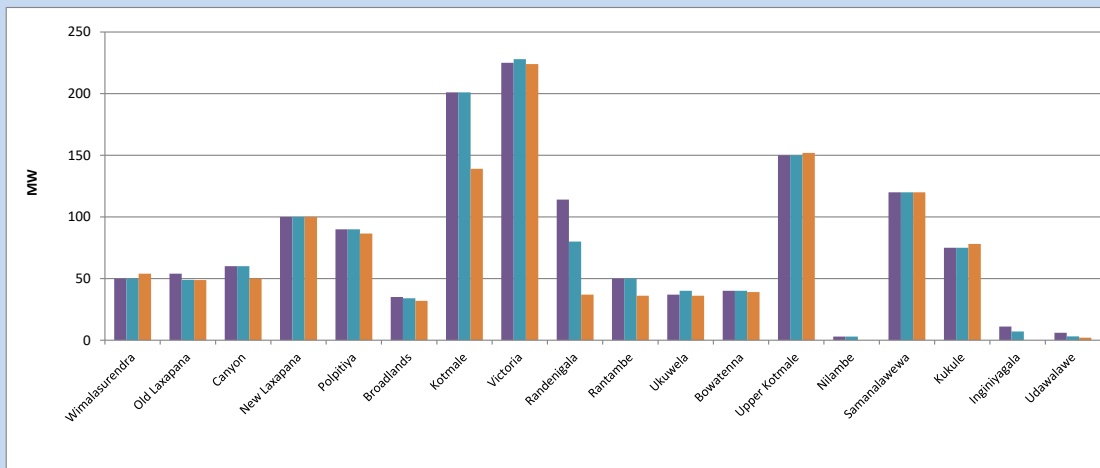


Available Generation is estimated based on plant availability at 6.00am on November 9, 2023
Broadlands power plant is operating in the Commissioning Stage

November 9, 2023

8. Major Hydro Plant Loading at Night Peak

November 8, 2023



Plant availability is recorded at 6.00 am on November 9, 2023
Broadlands power plant is operating in the Commissioning Stage

9. Summary of Major Plant performance

Table 05

Plant	Installed Capacity (MW)	Plant Availability (MW)	Night peak Load (MW)	Plant Dispatch (MWh)
Wimalasurendra	50	50	54	1,298
Old Laxapana	54	49	49	1,167
Canyon	60	60	50	902
New Laxapana	100	100	100	2,076
Polpitiya	90	90	87	2,000
Broadlands	35	34	32	687
Kotmale	201	201	139	1,810
Victoria	225	228	224	3,903
Randenigala	114	80	37	334
Rantambe	50	50	36	385
Ukuwela	37	40	36	609
Bowatenna	40	40	39	601
Upper Kotmale	150	150	152	3,640
Nilambe	3	3	0	64
Samanalawewa	120	120	120	2,871
Kukule	75	75	78	1,873
Inginiyagala	11	7	0	98
Udawalawe	6	3	2	70
Puttalam Coal I	270	270	268	4,817
Puttalam Coal II	270	270	208	4,321
Puttalam Coal III	270	0	0	0
KPS Small GTs	64	16	0	0
KPS GT 7	115	115	0	0
KCCP	161	153	0	0
Sapugaskanda A	70	49	0	0
Sapugaskanda B	70	54	0	0
Uthura Janani	26	16	0	0
Barge CEB	60	60	59	320
CEB-Hambantota	30	20	0	0
CEB-Mathugama	20	13	0	0
ACE Matara	24	24	24	90
Asia Power	50	0	0	0
KCCPS -2	163	155	0	0
West Coast	270	270	0	0
Nothern Power	36	0	0	0
ACE Embilipitiya	93	93	58	122
Total	3,483	2,958	1,991	37,013

Plant availability is the availability recorded at 6 am on

November 9, 2023

10. Contribution to the Night Peak in MW

November 8, 2023

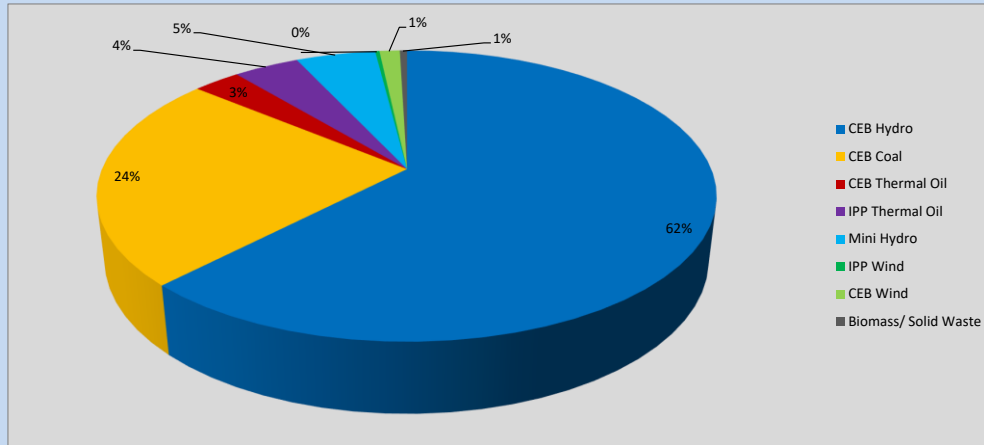


Table 06

CEB Hydro	1247	MW
CEB Coal	476	MW
CEB Thermal Oil	59	MW
IPP Thermal Oil	82	MW
Mini Hydro (Telemetered)	99	MW
IPP Wind	5.3	MW
CEB Wind	25.4	MW
Biomass/ Solid Waste	9	MW

Recorded Peak Demand Data

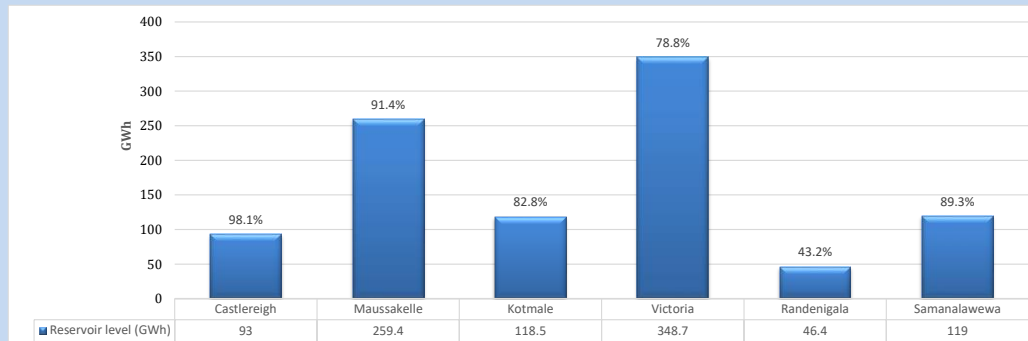
Table 07

Night Peak*	2,004	MW
Day Peak Maximum Demand	1,930	MW
Day Peak Minimum Demand	1,525	MW
Off Peak Minimum Demand	1,049	MW

Above figures are excluding contribution from roof top solar, non telemetered solar and mini hydro plants

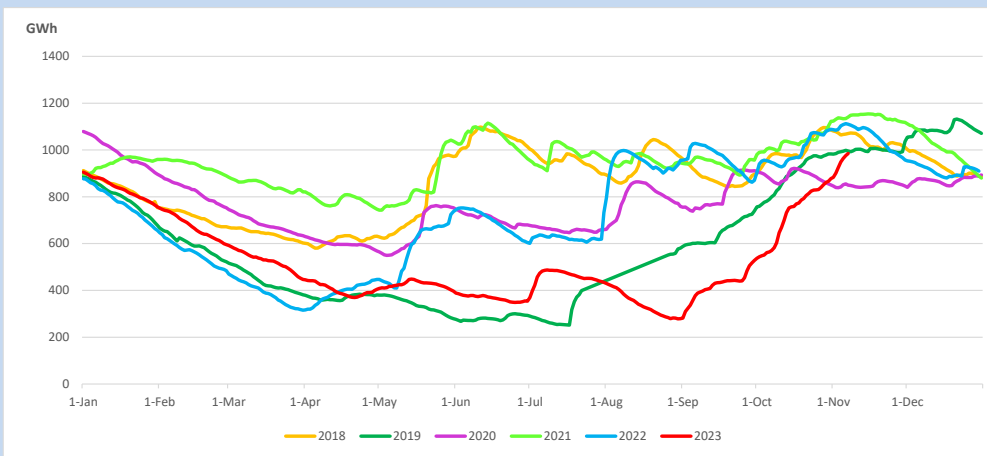
Reservoir Levels -

as at 06.00 Hr on November 9, 2023

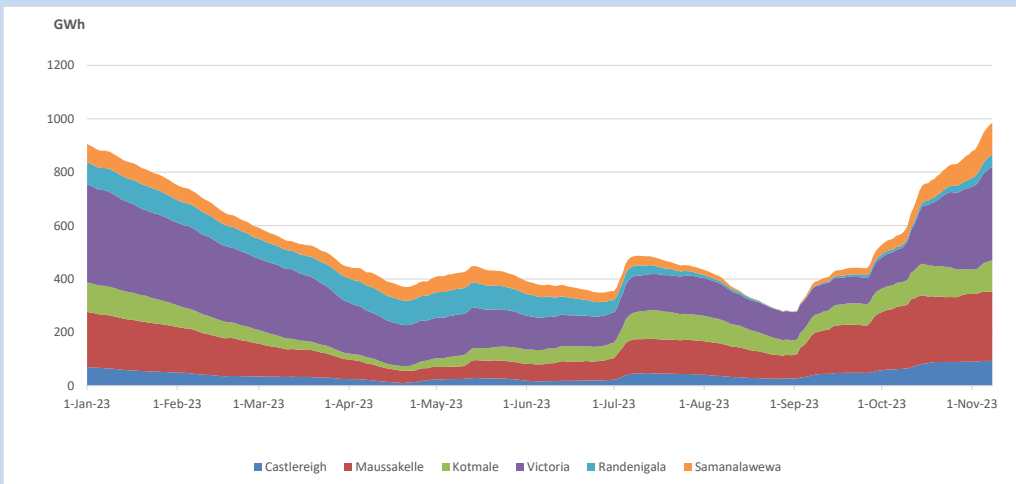


Total Reservoir Level 985 GWh
 % of Total capacity 81.7%

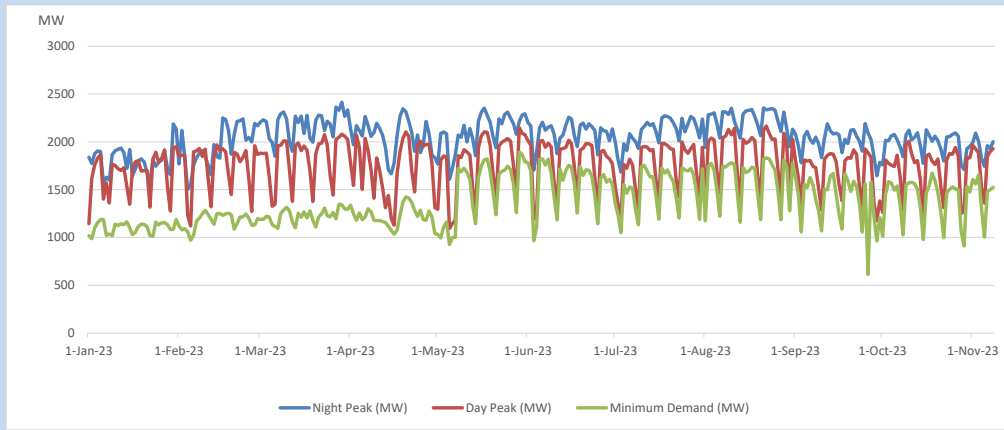
11. Comparison of Total Reservoir Storage Levels with Past Years



12. Variation of Major Hydro Reservoir Levels in the current year (GWh)



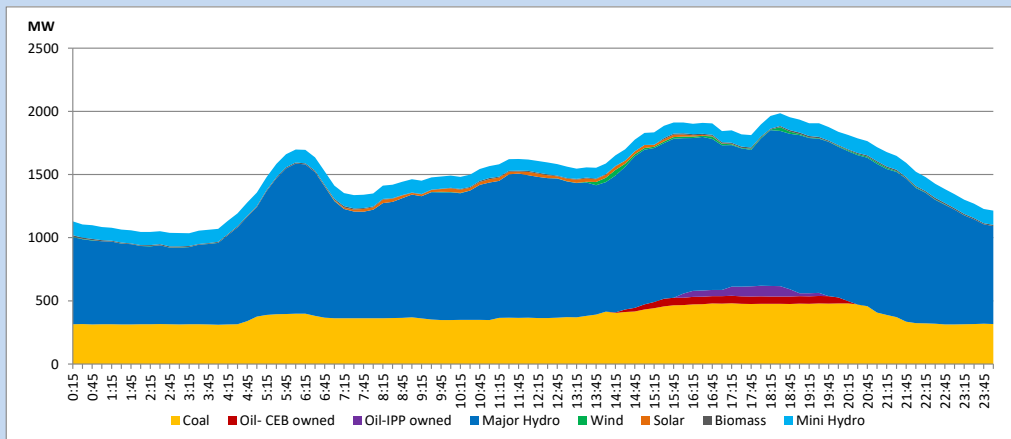
13. Variation of Demand during the current year



The above figures are excluding contribution from roof top solar, non telemetered solar and mini hydro plants

14. Daily Load Curve

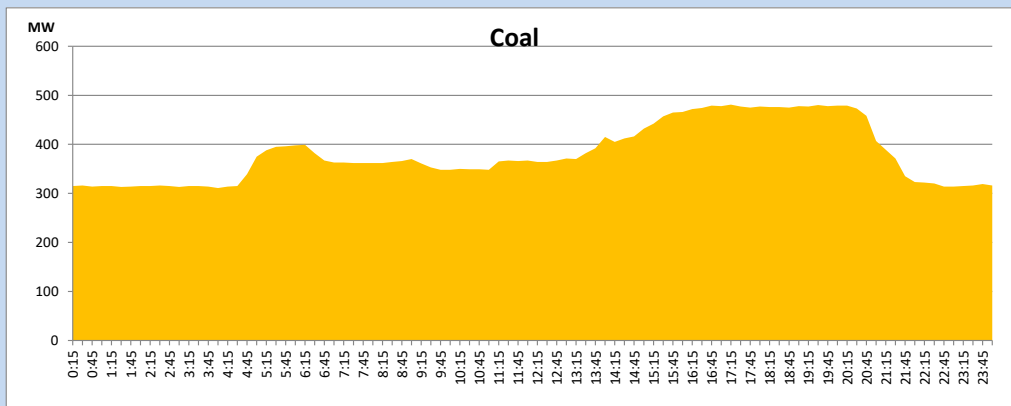
November 8, 2023



Solar and wind data is based on Telemetered Power Stations only

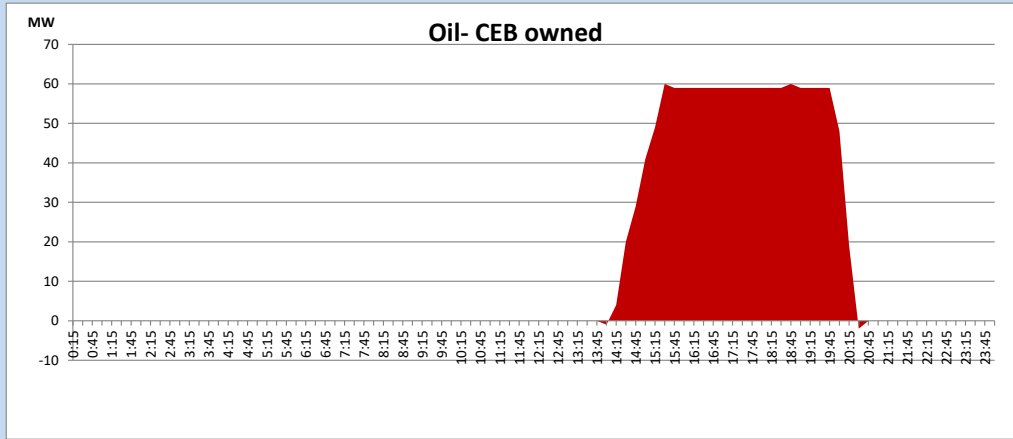
Coal Generation during

November 8, 2023



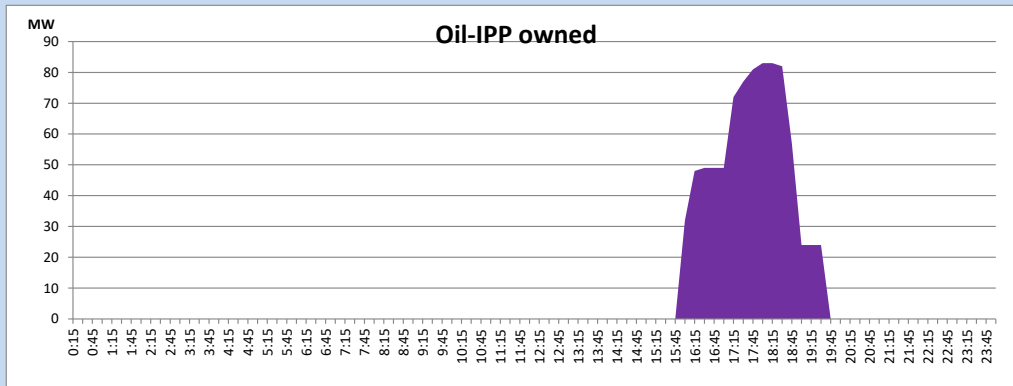
CEB Oil Plant Generation during

November 8, 2023



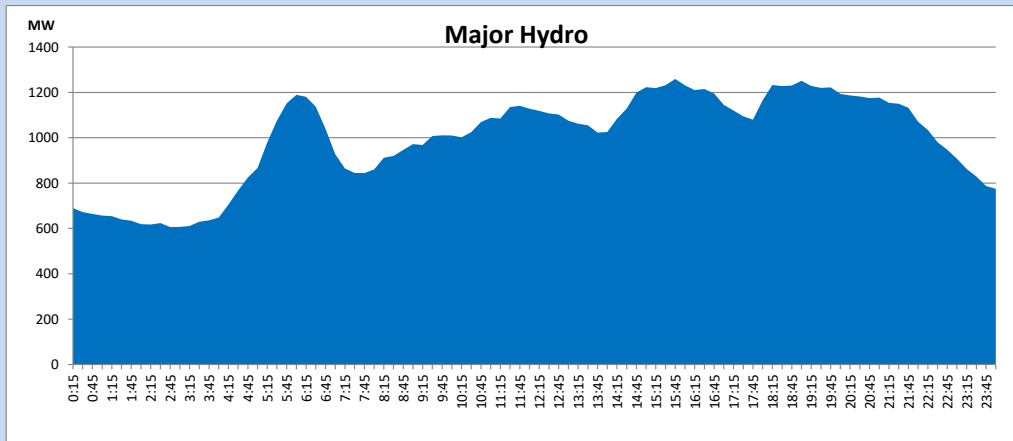
IPP Oil Plant Generation during

November 8, 2023



Major Hydro Generation during

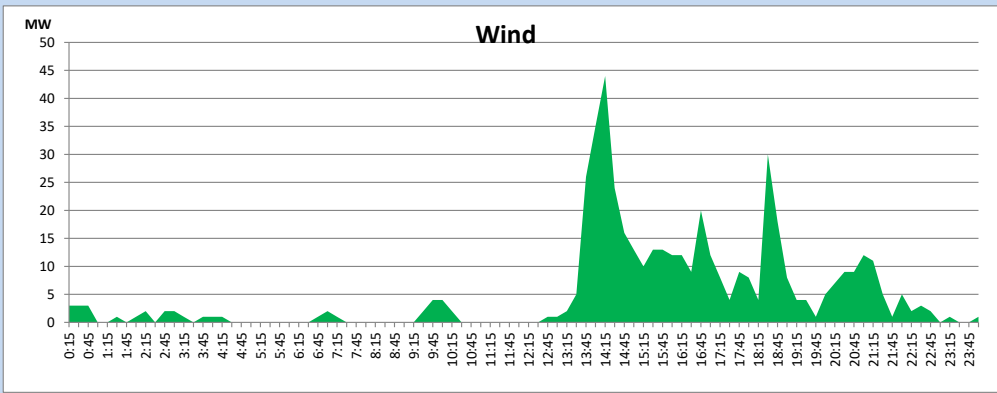
November 8, 2023



Wind Generation during

November 8, 2023

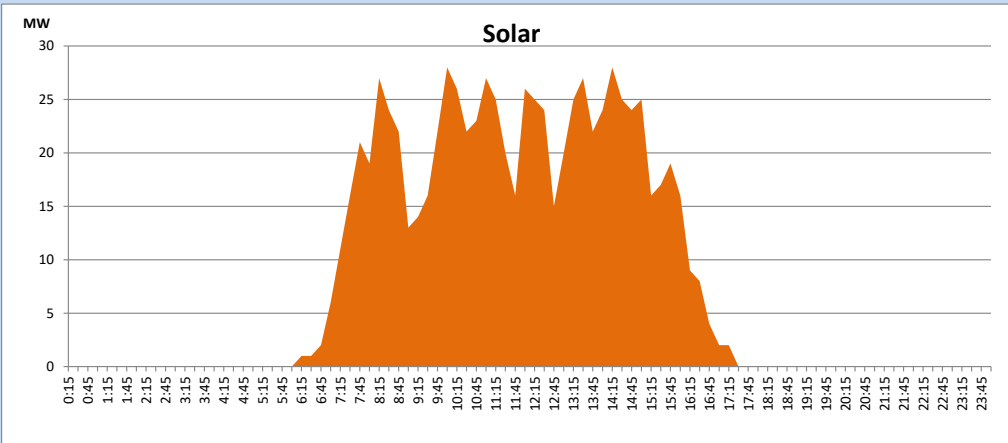
Based on Telemetered Power Stations only



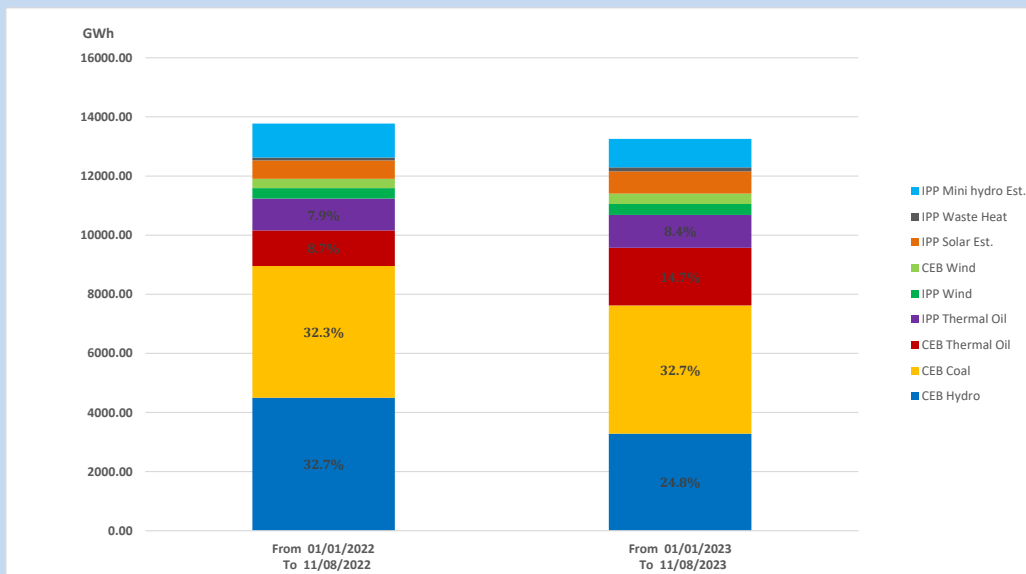
Solar Generation during

November 8, 2023

Based on Telemetered Power Stations only



15. Cumulative Dispatch Comparison with Last Year



Cumulative dispatch

From 01/01/2022 To 11/08/2022

13775 GWh

From 01/01/2023 To 11/08/2023

13257 GWh

The above figures are including contribution from roof top solar, non telemetered solar and mini hydro plants (figures have been adjusted based on the data from the CEB monthly review reports.)

Thermal Plant Fuel types

Table 08

Power Station	Primary Fuel
CEB Thermal	
Sapugaskanda 1	Heavy Fuel
Sapugaskanda 2	Heavy Fuel
Kelanitissa Small Gas Turbines	Auto Diesel
GT 7 - Kelanitissa	Auto Diesel
Kelanitissa CCY	Naphtha or Diesel
Lakvijaya 1	Coal
Lakvijaya 2	Coal
Lakvijaya 3	Coal
Uthuru Janani	Heavy Fuel
Barge CEB	Heavy Fuel
KCCPS -2	Auto Diesel

Power Station	Primary Fuel
Private Thermal	
West Coast	Auto Diesel / Heavy Fuel
ACE Matara	Heavy Fuel
ACE Embilipitiya	Heavy Fuel

Major Incidents reported during the day

November 8, 2023

- 1) Hambanthota - N'Polpitiya 220kV Cct 02 tripped and A/R from Hambanthota end and tripped from N'Polpitiya end at 13:20hrs due to the operation of distance protection. Hambanthota - N'Polpitiya 220kV Cct 02 normalized at 13:52hrs.
- 2) Upper Kothmale pond spilling started at 15:38hrs. Kukule pond and Upper Kothmale pond spilling continues to the present hour