

# Generation and Reservoirs Statistics

November 4, 2023



**PUBLIC UTILITIES COMMISSION OF SRI LANKA**

## 1. Daily Generation Mix in MWh

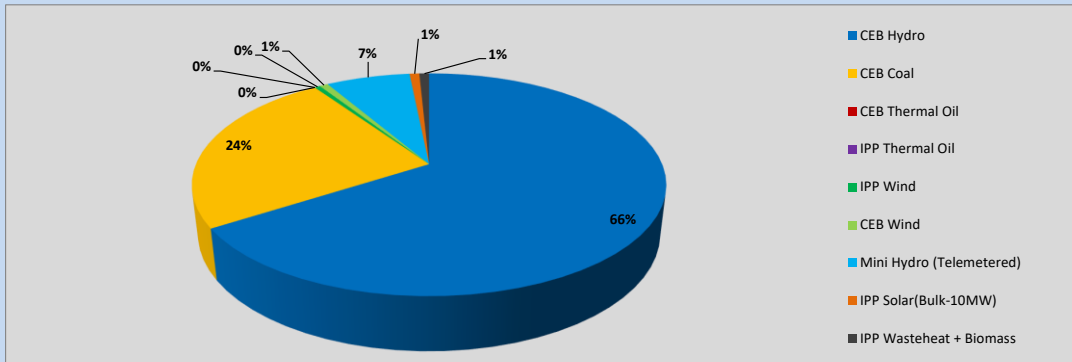


Table 01

	Generation (MWh)
CEB Hydro	21,847
CEB Coal	8,102
CEB Thermal Oil	-
IPP Thermal Oil	-
IPP Wind	156
CEB Wind	230
Mini Hydro (Telemetered)	2,269
IPP Solar (Bulk)	264
IPP Waste heat + Biomass	263
<b>Total Generation (Excluding estimated figures)</b>	<b>33,131</b>
* Estimated unserved energy	0
* Estimated Mini Hydro (Non telemetered)	2601
* Estimated IPP Solar PV (Bulk 1-10MW)	304
* Estimated Solar Roof Top PV	1640
<b>Total Generation (Including estimated figures)</b>	<b>37,676</b>

\* Estimated figures of CEB generation report

Table 02

	Installed Capacity (MW)
CEB Hydro	1409
CEB Coal	810
CEB Thermal Oil	781
IPP Thermal Oil (West Coast, ACE Matara and ACE Embilipitiya)	387
IPP Wind	148
CEB Wind	100
Mini Hydro	416
IPP Waste heat + Biomass	50
IPP Solar	130
Rooftop Solar* (Ordinary)	267
Rooftop Solar* (LT Bulk)	256
Rooftop Solar* (HT Bulk)	61

Data Source - Monthly Review Report [May-2023]

## 2. Cumulative Dispatch

Following data excludes the contribution from roof top solar, non telemetered solar and mini hydro plants

Table 03 - Current Month

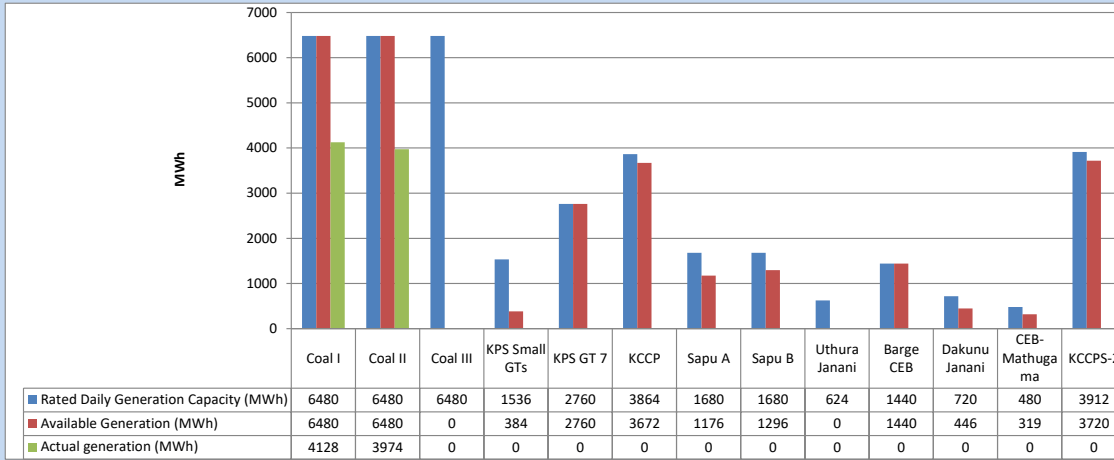
Category	Dispatch (GWh)	
CEB Hydro	92	81.08%
CEB Coal	39	34.74%
CEB Thermal Oil	1	1.01%
IPP Thermal	0	0.13%
SPP Wind	1	0.47%
CEB Wind	1	0.57%
Mini Hydro (Telemetered)	10	8.65%
IPP Solar(Bulk-10MW)	1	0.86%
IPP Waste heat + BMP	1	0.90%
<b>Total</b>	<b>113</b>	

Table 04 - Current Year

Category	Dispatch (GWh)	
CEB Hydro	3,206	27.20%
CEB Coal	4,315	36.61%
CEB Thermal Oil	1,955	16.59%
IPP Thermal	1,114	9.45%
SPP Wind	347	2.95%
CEB Wind	357	3.03%
Mini Hydro (Telemetered)	319	2.71%
IPP Solar(Bulk-10MW)	92	0.78%
IPP Waste heat	109	0.93%
<b>Total</b>	<b>11,786</b>	

### 3. CEB owned Thermal Plant Dispatch

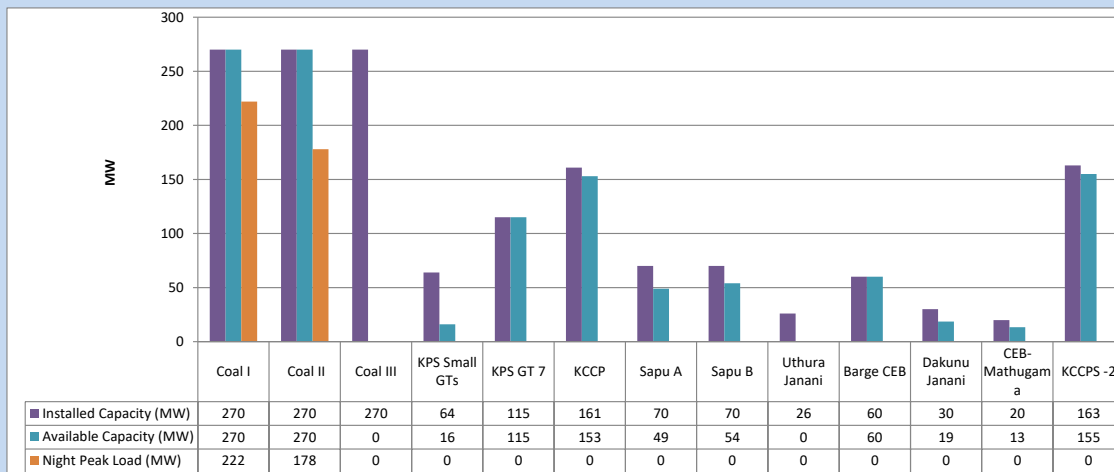
November 4, 2023



Available Generation is estimated based on plant availability at 6.00am on

November 5, 2023

### 4. CEB owned Thermal Plant Loading at the Night Peak

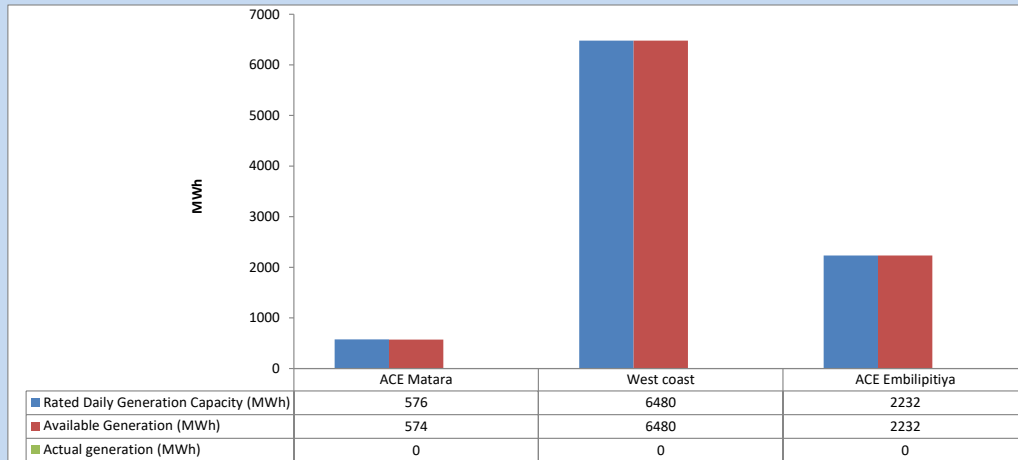


Plant availability is recorded at 6.00 am on

November 5, 2023

### 5. IPP owned Thermal Plant Dispatch

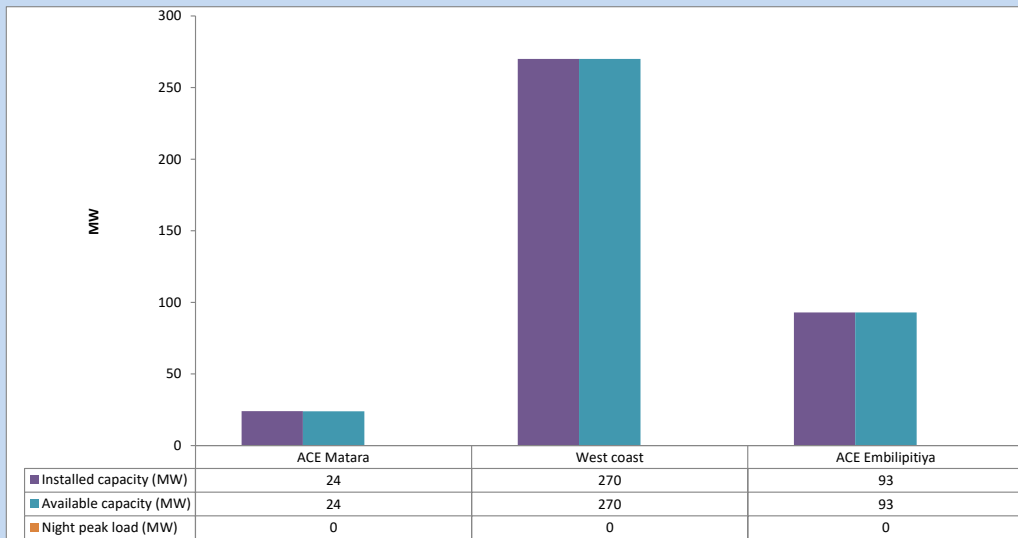
November 4, 2023



Available Generation is estimated based on plant availability at 6.00am on

November 5, 2023

### 6. IPP owned Thermal Plant Loading at the Night Peak

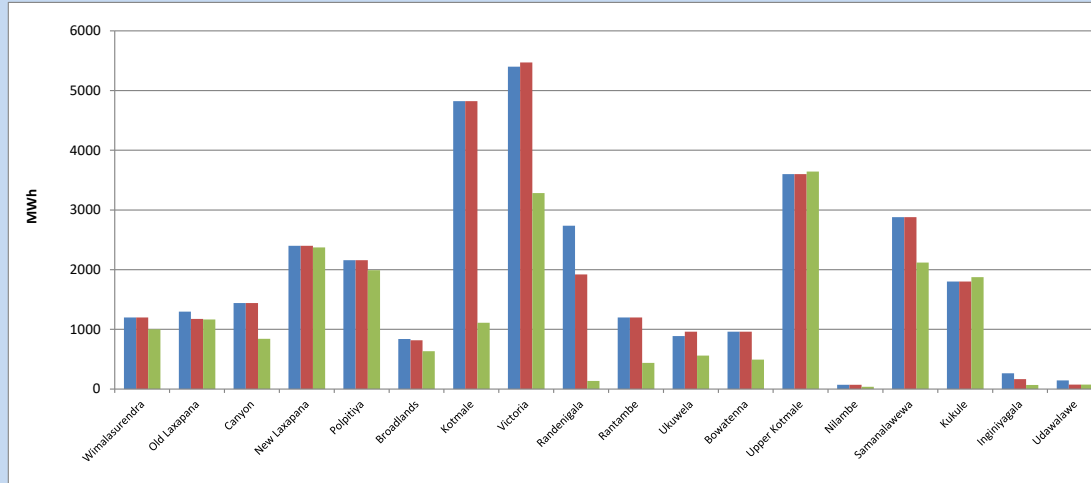


Plant availability is recorded at 6.00 am on

November 5, 2023

### 7. Major Hydro Plant Dispatch

November 4, 2023

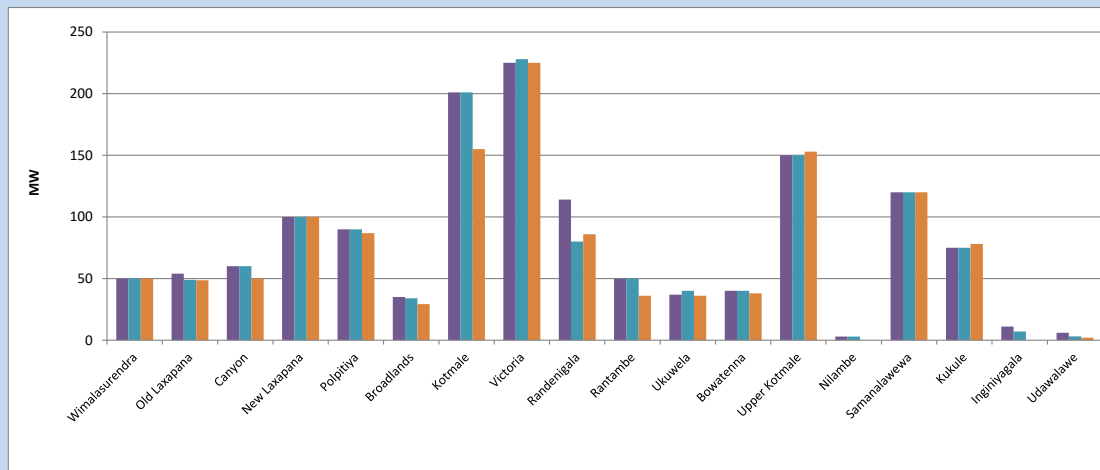


Available Generation is estimated based on plant availability at 6.00am on November 5, 2023  
Broadlands power plant is operating in the Commissioning Stage

November 5, 2023

### 8. Major Hydro Plant Loading at Night Peak

November 4, 2023



Plant availability is recorded at 6.00 am on November 5, 2023  
Broadlands power plant is operating in the Commissioning Stage

November 5, 2023

## 9. Summary of Major Plant performance

**Table 05**

Plant	Installed Capacity (MW)	Plant Availability (MW)	Night peak Load (MW)	Plant Dispatch (MWh)
Wimalasurendra	50	50	50	1,000
Old Laxapana Canyon	54	49	49	1,167
New Laxapana	60	60	50	842
Polpitiya	100	100	100	2,373
Broadlands	90	90	87	1,990
Kotmale	35	34	29	635
Victoria	201	201	155	1,110
Randenigala	225	228	225	3,284
Rantambe	114	80	86	136
Ukuwela	50	50	36	438
Bowatenna	37	40	36	561
Upper Kotmale	40	40	38	492
Nilambe	150	150	153	3,643
Samanalawewa	3	3	0	37
Kukule	120	120	120	2,120
Inginiyagala	75	75	78	1,875
Udawalawe	11	7	0	70
Puttalam Coal I	6	3	2	74
Puttalam Coal II	270	270	222	4,128
Puttalam Coal III	270	270	178	3,974
KPS Small GTs	270	0	0	0
KPS GT 7	64	16	0	0
KCCP	115	115	0	0
Sapugaskanda A	161	153	0	0
Sapugaskanda B	70	49	0	0
Uthura Janani	70	54	0	0
Barge CEB	26	0	0	0
CEB-Hambantota	60	60	0	0
CEB-Mathugama	30	19	0	0
ACE Matara	20	13	0	0
Asia Power	24	24	0	0
KCCPS -2	50	0	0	0
West Coast	163	155	0	0
Nothern Power	270	270	0	0
ACE Embilipitiya	36	0	0	0
Total	93	93	0	0
<b>Total</b>	<b>3,483</b>	<b>2,941</b>	<b>1,816</b>	<b>33,131</b>

Plant availability is the availability recorded at 6 am on

November 5, 2023

### 10. Contribution to the Night Peak in MW

November 4, 2023

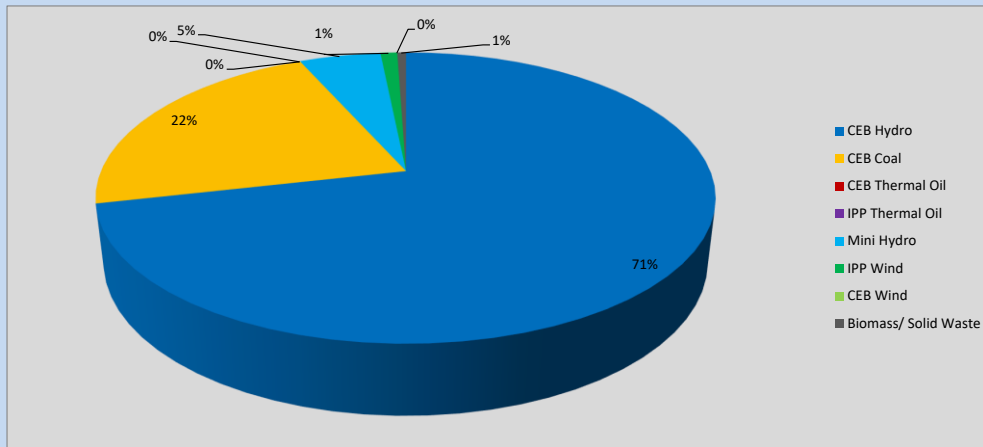


Table 06

CEB Hydro	1307	MW
CEB Coal	400	MW
CEB Thermal Oil	0	MW
IPP Thermal Oil	0	MW
Mini Hydro (Telemetered)	93	MW
IPP Wind	19.1	MW
CEB Wind	0	MW
Biomass/ Solid Waste	10	MW

#### Recorded Peak Demand Data

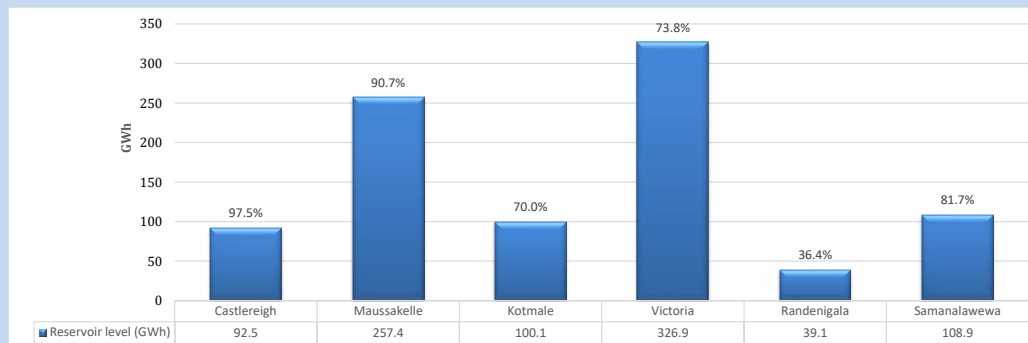
Table 07

Night Peak*	1,829	MW
Day Peak Maximum Demand	1,517	MW
Day Peak Minimum Demand	1,305	MW
Off Peak Minimum Demand	1,063	MW

Above figures are excluding contribution from roof top solar, non telemetered solar and mini hydro plants

#### Reservoir Levels -

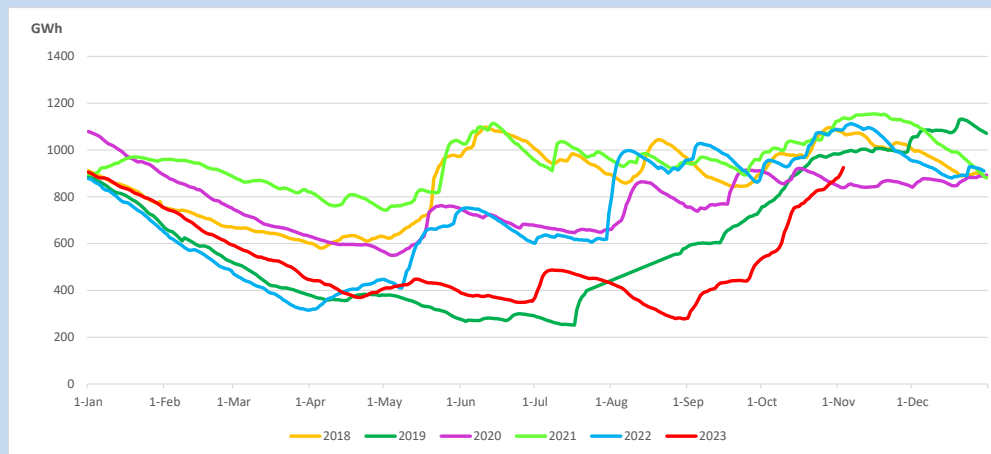
as at 06.00 Hr on November 5, 2023



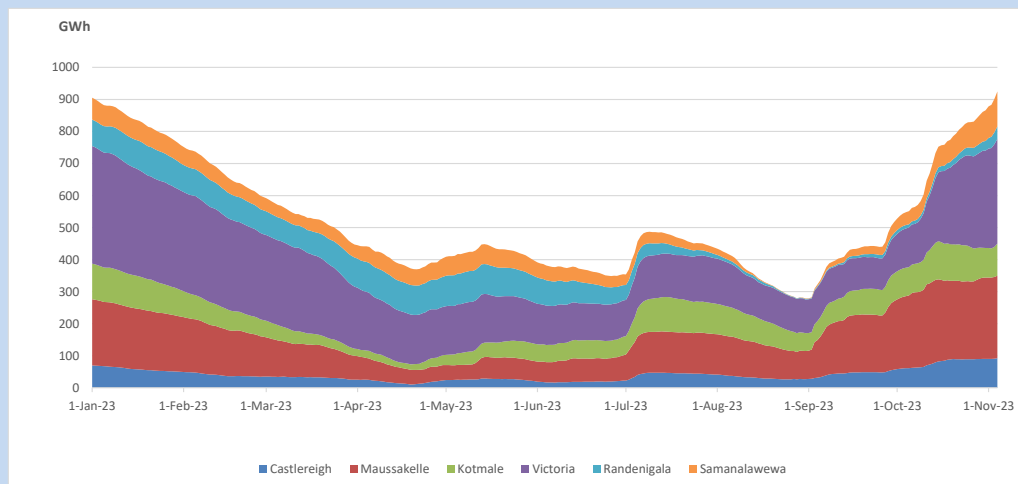
Total Reservoir Level  
% of Total capacity

924.9 GWh  
76.7%

### 11. Comparison of Total Reservoir Storage Levels with Past Years

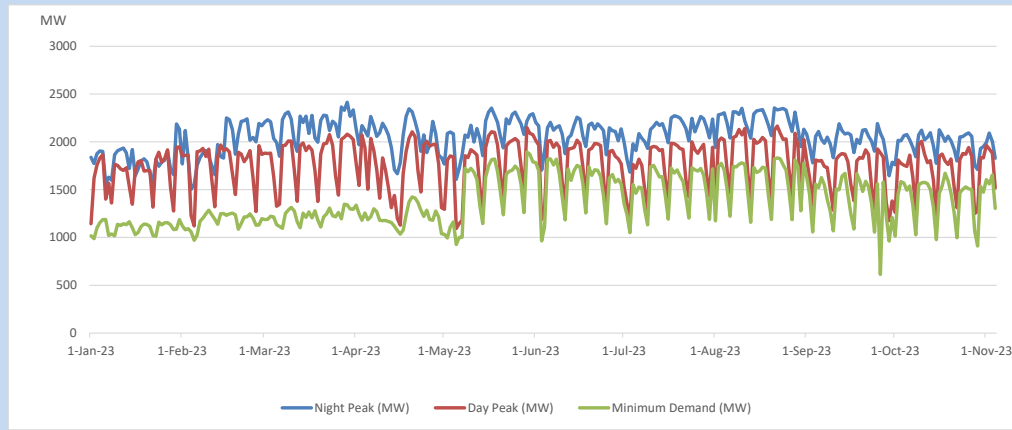


### 12. Variation of Major Hydro Reservoir Levels in the current year (GWh)





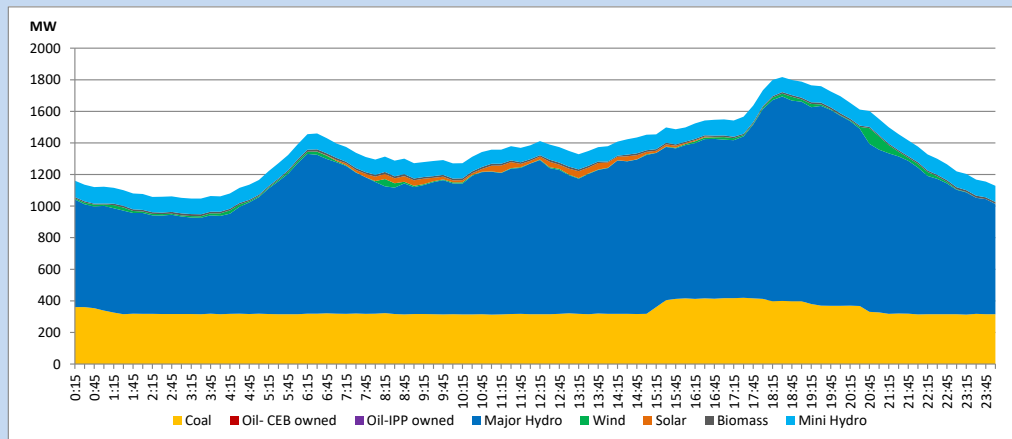
### 13. Variation of Demand during the current year



The above figures are excluding contribution from roof top solar, non telemetered solar and mini hydro plants

### 14. Daily Load Curve

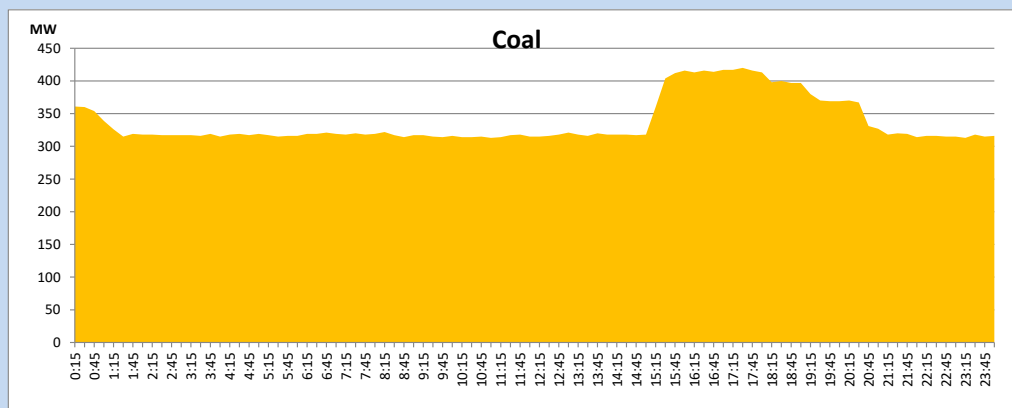
November 4, 2023



Solar and wind data is based on Telemetered Power Stations only

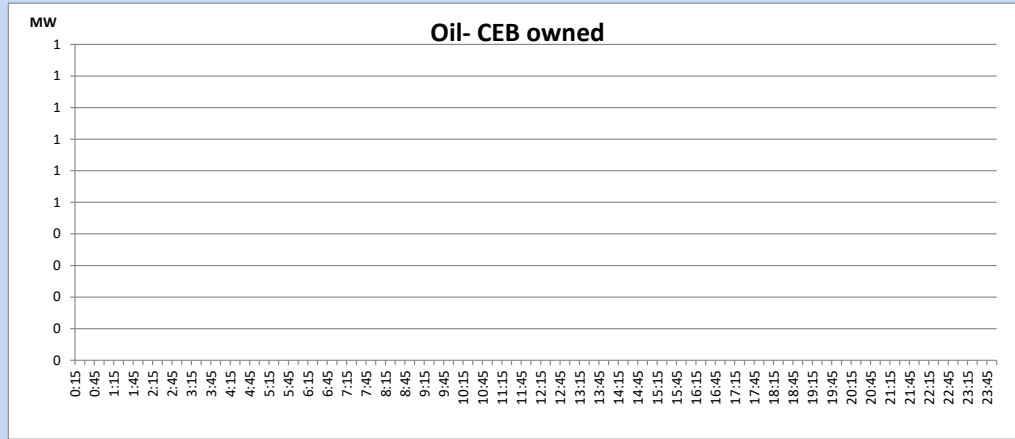
### Coal Generation during

November 4, 2023



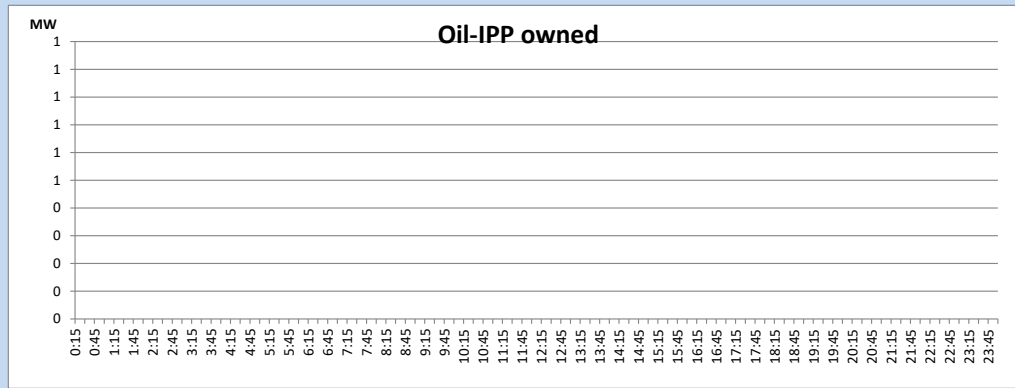
CEB Oil Plant Generation during

November 4, 2023



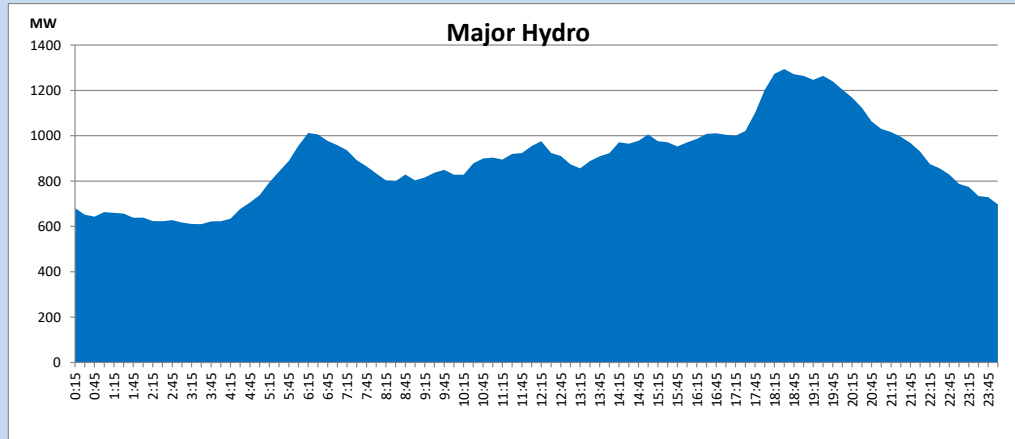
IPP Oil Plant Generation during

November 4, 2023



Major Hydro Generation during

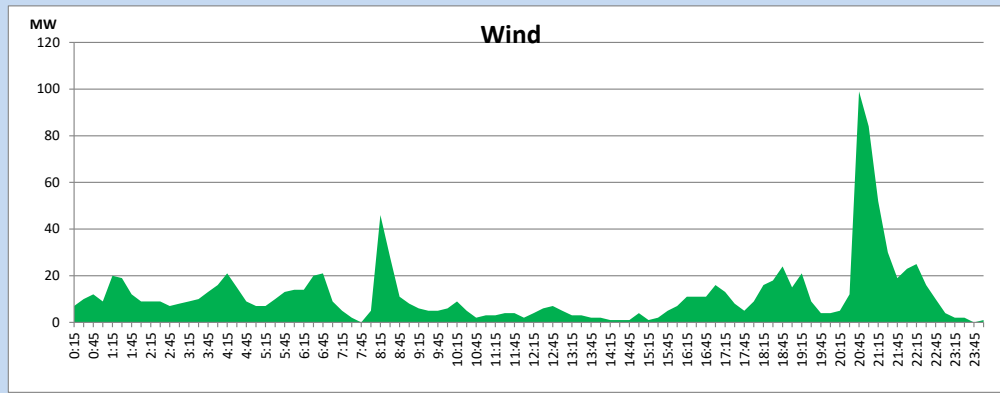
November 4, 2023



## Wind Generation during

November 4, 2023

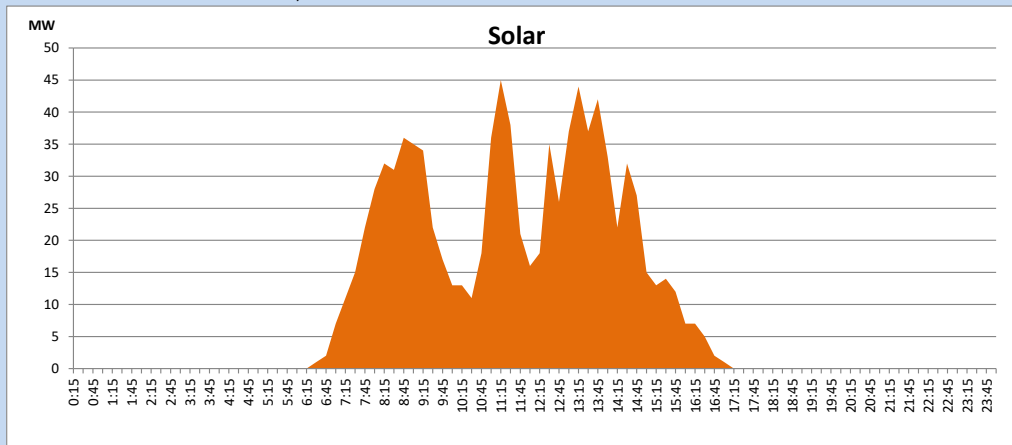
Based on Telemetered Power Stations only



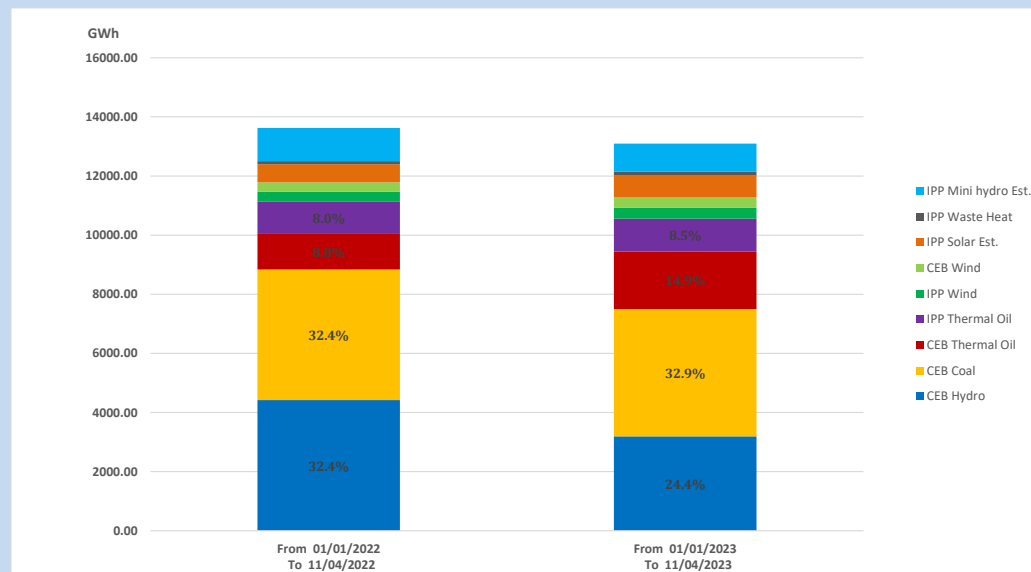
## Solar Generation during

November 4, 2023

Based on Telemetered Power Stations only



## 15. Cumulative Dispatch Comparison with Last Year



### Cumulative dispatch

From 01/01/2022 To 11/04/2022

13628 GWh

From 01/01/2023 To 11/04/2023

13096 GWh

The above figures are including contribution from roof top solar, non telemetered solar and mini hydro plants (figures have been adjusted based on the data from the CEB monthly review reports.)

Thermal Plant Fuel types

Table 08

Power Station	Primary Fuel
CEB Thermal	
Sapugaskanda 1	Heavy Fuel
Sapugaskanda 2	Heavy Fuel
Kelanitissa Small Gas Turbines	Auto Diesel
GT 7 - Kelanitissa	Auto Diesel
Kelanitissa CCY	Naphtha or Diesel
Lakvijaya 1	Coal
Lakvijaya 2	Coal
Lakvijaya 3	Coal
Uthuru Janani	Heavy Fuel
Barge CEB	Heavy Fuel
KCCPS -2	Auto Diesel

Power Station	Primary Fuel
Private Thermal	
West Coast	Auto Diesel / Heavy Fuel
ACE Matara	Heavy Fuel
ACE Embilipitiya	Heavy Fuel

Major Incidents reported during the day

November 4, 2023

- 1) New Anuradhapura – Puttalam 132kV cct 02 tripped & A/R from both ends at 06:49hrs due to the operation of distance protection
- 2) Badulla-Monaragala 132kV cct energized for the soak test from Badulla end at 13:25hrs.
- 3) Upper Kothmale pond spilling started at 13:42hrs and continues to the present hour.
- 4) Kukule pond spilling continues to the present hour.