

Generation and Reservoirs Statistics

November 3, 2023



PUBLIC UTILITIES COMMISSION OF SRI LANKA

1. Daily Generation Mix in MWh

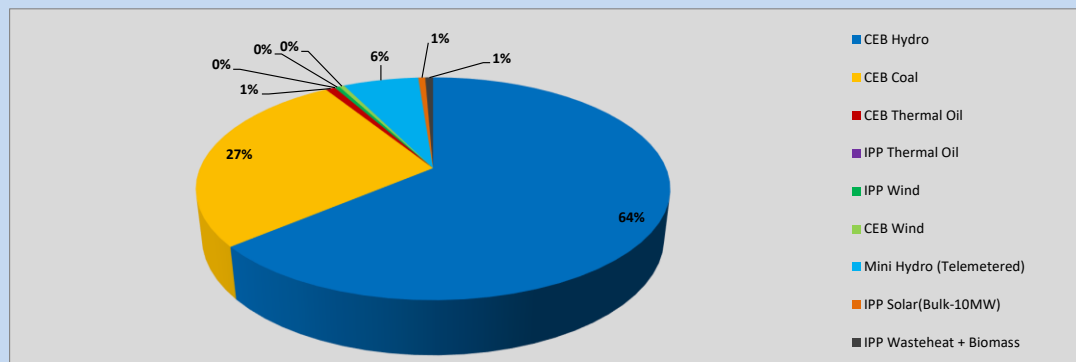


Table 01

	Generation (MWh)
CEB Hydro	24,048
CEB Coal	10,238
CEB Thermal Oil	292
IPP Thermal Oil	-
IPP Wind	148
CEB Wind	158
Mini Hydro (Telemetered)	2,318
IPP Solar (Bulk)	214
IPP Waste heat + Biomass	241
Total Generation (Excluding estimated figures)	37,657
* Estimated unserved energy	0
* Estimated Mini Hydro (Non telemetered)	2552
* Estimated IPP Solar PV (Bulk 1-10MW)	304
* Estimated Solar Roof Top PV	1640
Total Generation (Including estimated figures)	42,153

* Estimated figures of CEB generation report

Table 02

	Installed Capacity (MW)
CEB Hydro	1409
CEB Coal	810
CEB Thermal Oil	781
IPP Thermal Oil (West Coast, ACE Matara and ACE Embilipitiya)	387
IPP Wind	148
CEB Wind	100
Mini Hydro	416
IPP Waste heat + Biomass	50
IPP Solar	130
Rooftop Solar* (Ordinary)	267
Rooftop Solar* (LT Bulk)	256
Rooftop Solar* (HT Bulk)	61

Data Source - Monthly Review Report [May-2023]

2. Cumulative Dispatch

Following data excludes the contribution from roof top solar, non telemetered solar and mini hydro plants

Table 03 - Current Month

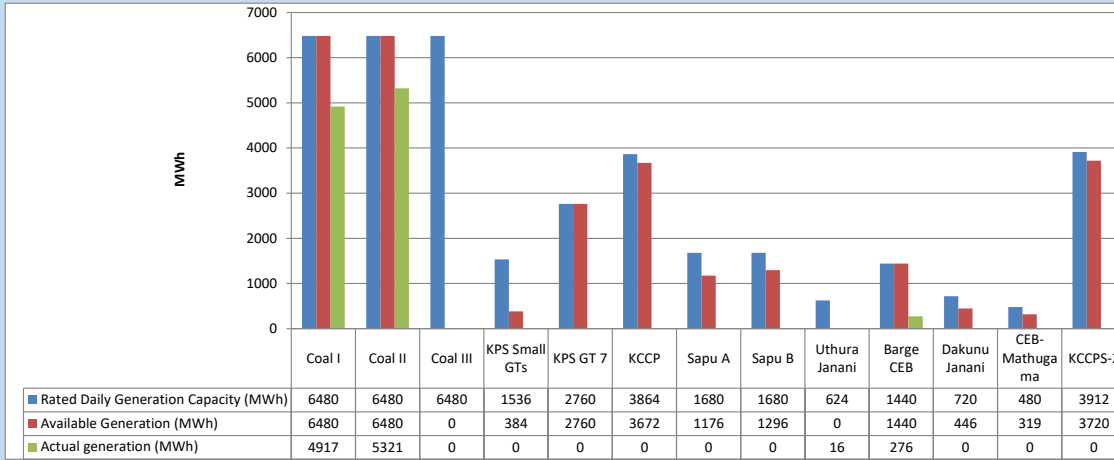
Category	Dispatch (GWh)	
CEB Hydro	70	62.31%
CEB Coal	31	27.82%
CEB Thermal Oil	1	1.02%
IPP Thermal	0	0.13%
SPP Wind	0	0.33%
CEB Wind	0	0.37%
Mini Hydro (Telemetered)	8	6.70%
IPP Solar(Bulk-10MW)	1	0.63%
IPP Waste heat + BMP	1	0.68%
Total	113	

Table 04 - Current Year

Category	Dispatch (GWh)	
CEB Hydro	3,184	27.03%
CEB Coal	4,307	36.56%
CEB Thermal Oil	1,955	16.59%
IPP Thermal	1,114	9.46%
SPP Wind	347	2.95%
CEB Wind	357	3.03%
Mini Hydro (Telemetered)	317	2.69%
IPP Solar(Bulk-10MW)	92	0.78%
IPP Waste heat	109	0.92%
Total	11,781	

3. CEB owned Thermal Plant Dispatch

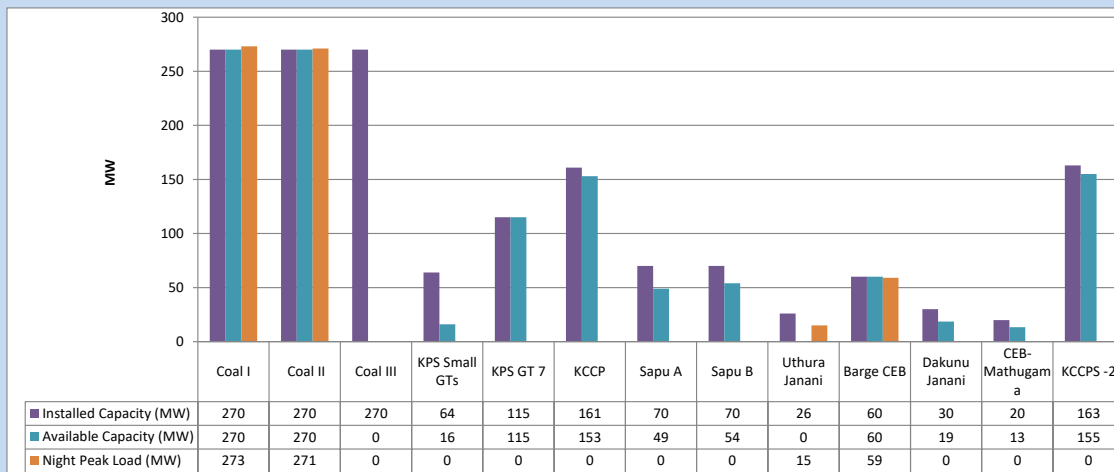
November 3, 2023



Available Generation is estimated based on plant availability at 6.00am on

November 4, 2023

4. CEB owned Thermal Plant Loading at the Night Peak

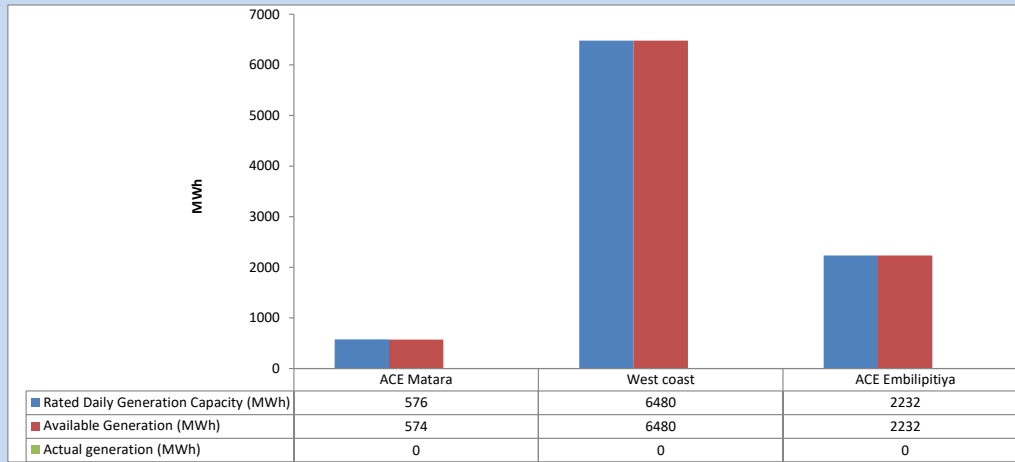


Plant availability is recorded at 6.00 am on

November 4, 2023

5. IPP owned Thermal Plant Dispatch

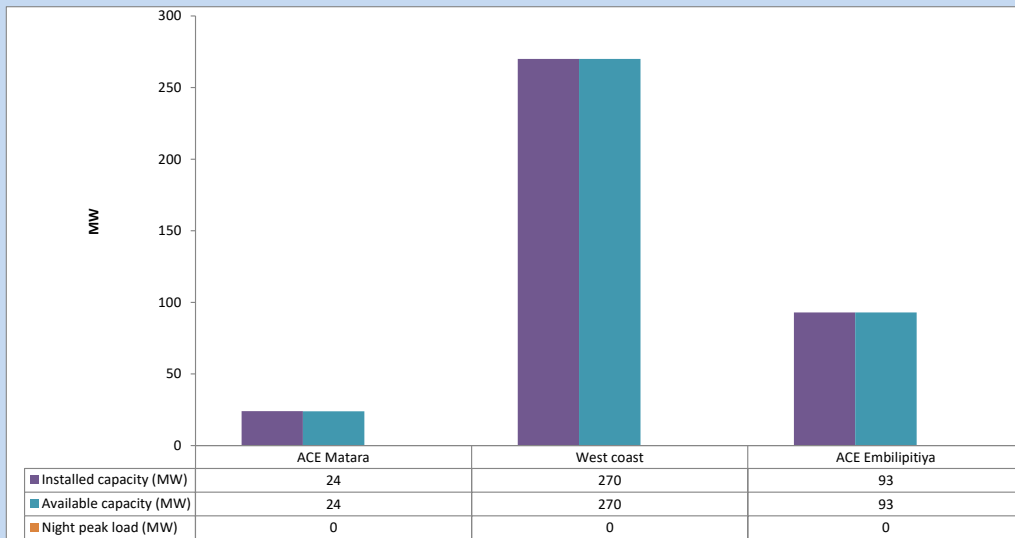
November 3, 2023



Available Generation is estimated based on plant availability at 6.00am on

November 4, 2023

6. IPP owned Thermal Plant Loading at the Night Peak

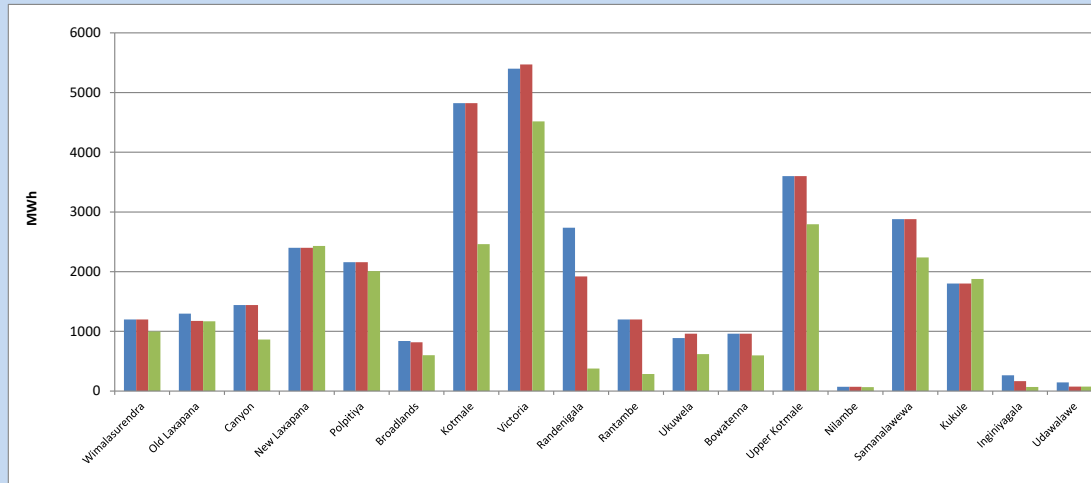


Plant availability is recorded at 6.00 am on

November 4, 2023

7. Major Hydro Plant Dispatch

November 3, 2023

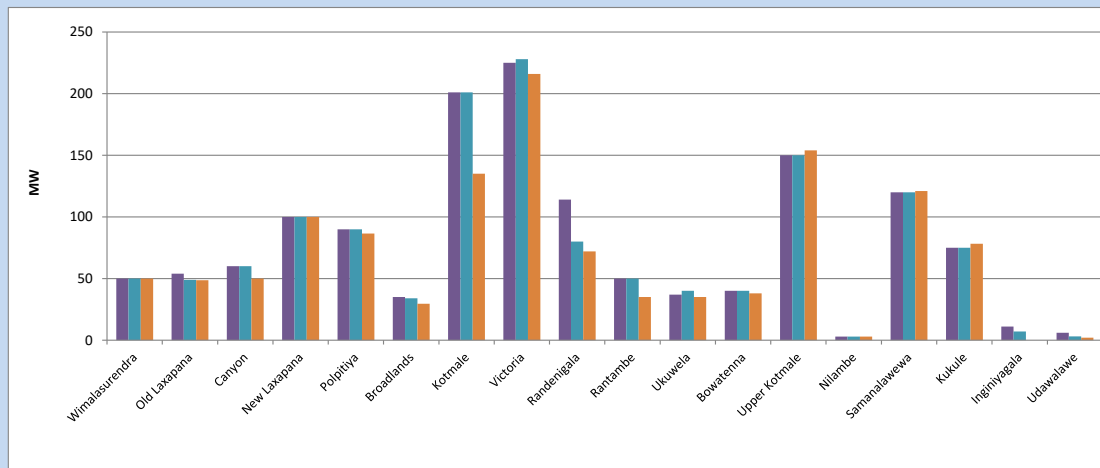


Available Generation is estimated based on plant availability at 6.00am on November 4, 2023
Broadlands power plant is operating in the Commissioning Stage

November 4, 2023

8. Major Hydro Plant Loading at Night Peak

November 3, 2023



Plant availability is recorded at 6.00 am on November 4, 2023
Broadlands power plant is operating in the Commissioning Stage

November 4, 2023

9. Summary of Major Plant performance

Table 05

Plant	Installed Capacity (MW)	Plant Availability (MW)	Night peak Load (MW)	Plant Dispatch (MWh)
Wimalasurendra	50	50	50	997
Old Laxapana Canyon	54	49	49	1,169
New Laxapana	60	60	50	864
Polpitiya	100	100	100	2,431
Broadlands	90	90	87	2,010
Kotmale	35	34	30	600
Kotmale	201	201	135	2,460
Victoria	225	228	216	4,516
Randenigala	114	80	72	376
Rantambe	50	50	35	286
Ukuwela	37	40	35	618
Bowatenna	40	40	38	597
Upper Kotmale	150	150	154	2,795
Nilambe	3	3	3	67
Samanalawewa	120	120	121	2,239
Kukule	75	75	78	1,879
Inginiyagala	11	7	0	69
Udawalawe	6	3	2	75
Puttalam Coal I	270	270	273	4,917
Puttalam Coal II	270	270	271	5,321
Puttalam Coal III	270	0	0	0
KPS Small GTs	64	16	0	0
KPS GT 7	115	115	0	0
KCCP	161	153	0	0
Sapugaskanda A	70	49	0	0
Sapugaskanda B	70	54	0	0
Uthura Janani	26	0	15	16
Barge CEB	60	60	59	276
CEB-Hambantota	30	19	0	0
CEB-Mathugama	20	13	0	0
ACE Matara	24	24	0	0
Asia Power	50	0	0	0
KCCPS -2	163	155	0	0
West Coast	270	270	0	0
Nothern Power	36	0	0	0
ACE Embilipitiya	93	93	0	0
Total	3,483	2,941	1,989	37,657

Plant availability is the availability recorded at 6 am on

November 4, 2023

10. Contribution to the Night Peak in MW

November 3, 2023

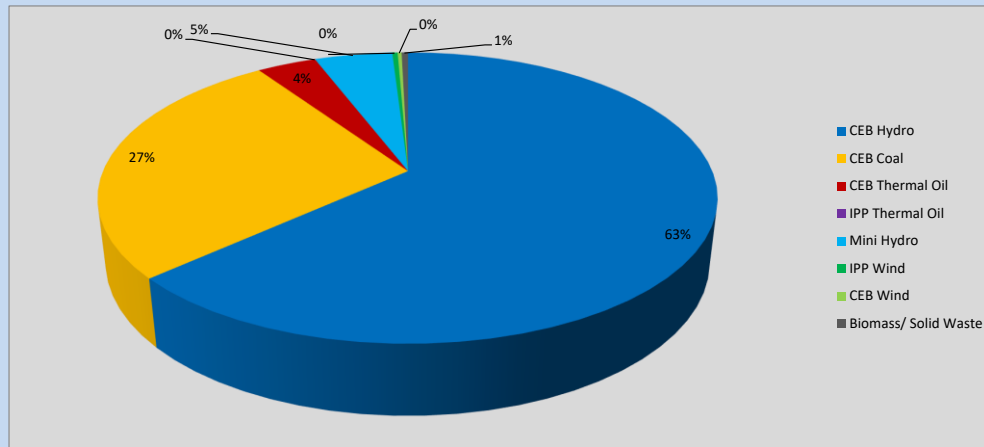


Table 06

CEB Hydro	1269	MW
CEB Coal	544	MW
CEB Thermal Oil	74	MW
IPP Thermal Oil	0	MW
Mini Hydro (Telemetered)	97	MW
IPP Wind	6.8	MW
CEB Wind	4.9	MW
Biomass/ Solid Waste	8	MW

Recorded Peak Demand Data

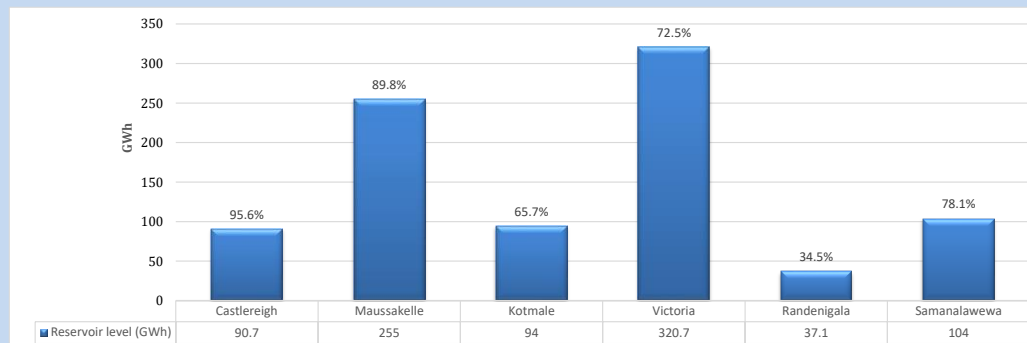
Table 07

Night Peak*	2,004	MW
Day Peak Maximum Demand	1,882	MW
Day Peak Minimum Demand	1,654	MW
Off Peak Minimum Demand	1,102	MW

Above figures are excluding contribution from roof top solar, non telemetered solar and mini hydro plants

Reservoir Levels -

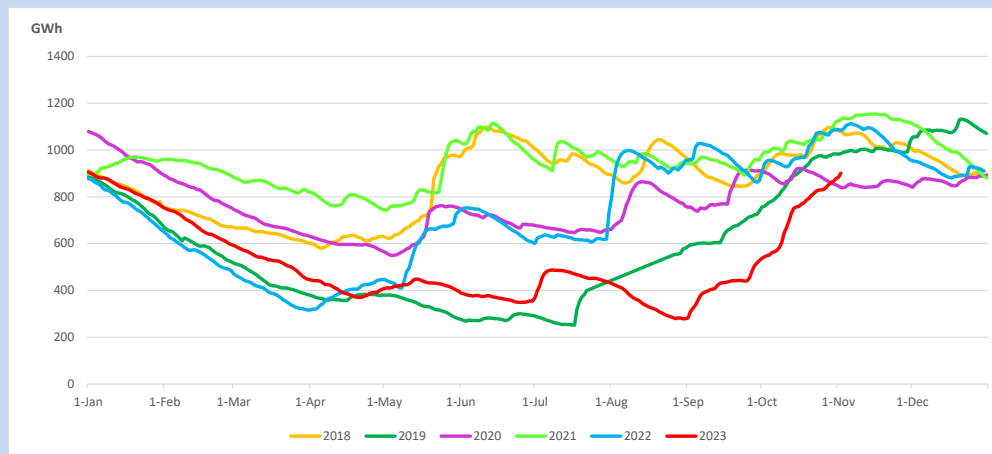
as at 06.00 Hr on November 4, 2023



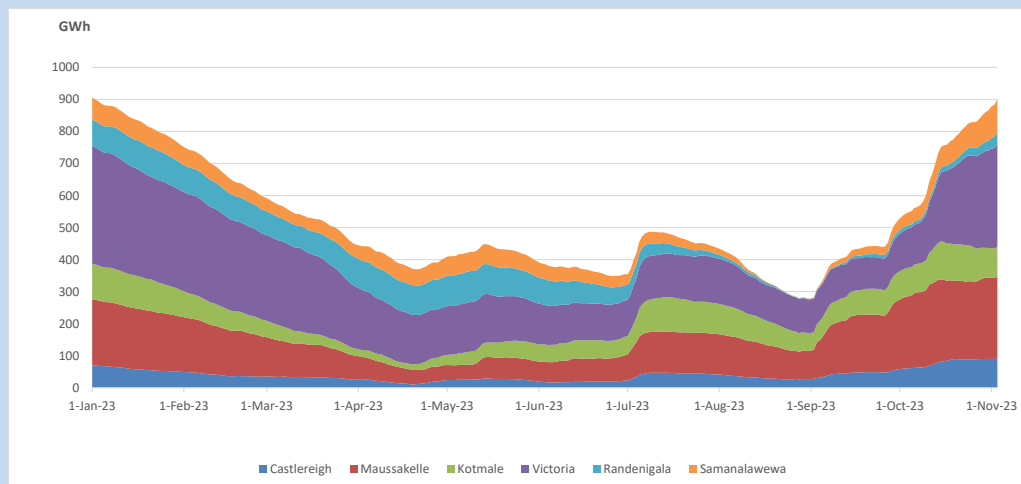
Total Reservoir Level
% of Total capacity

901.5 GWh
74.8%

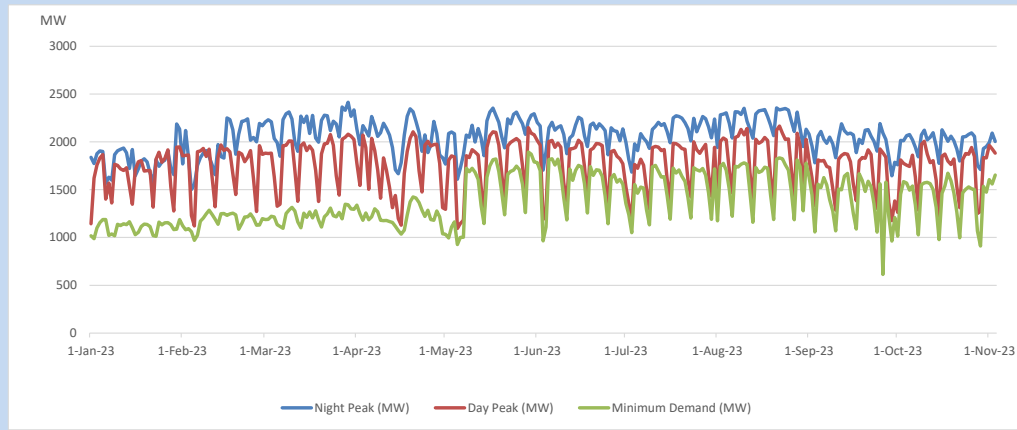
11. Comparison of Total Reservoir Storage Levels with Past Years



12. Variation of Major Hydro Reservoir Levels in the current year (GWh)



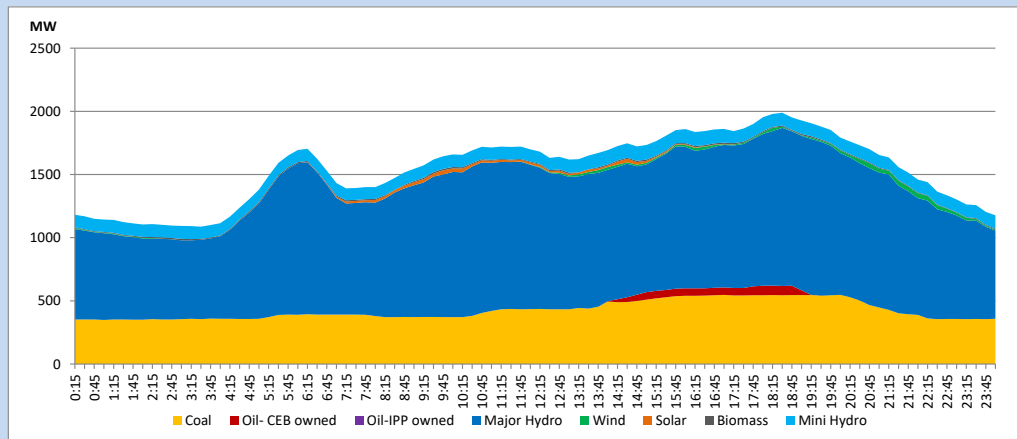
13. Variation of Demand during the current year



The above figures are excluding contribution from roof top solar, non telemetered solar and mini hydro plants

14. Daily Load Curve

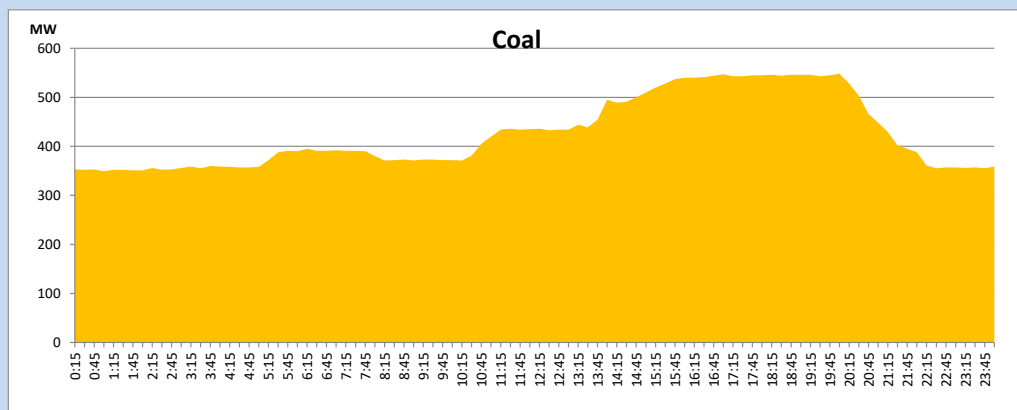
November 3, 2023



Solar and wind data is based on Telemetered Power Stations only

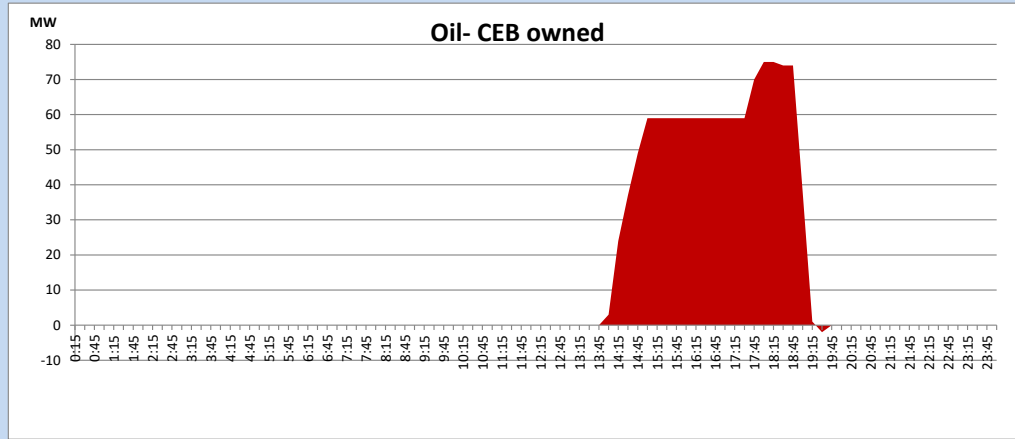
Coal Generation during

November 3, 2023



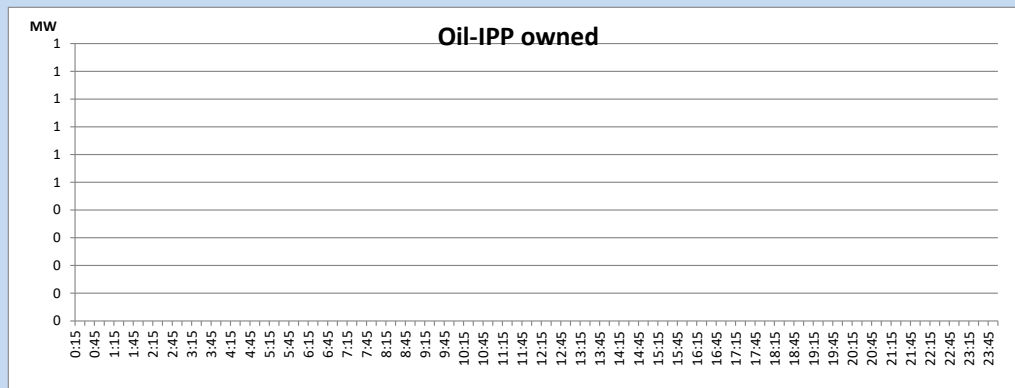
CEB Oil Plant Generation during

November 3, 2023



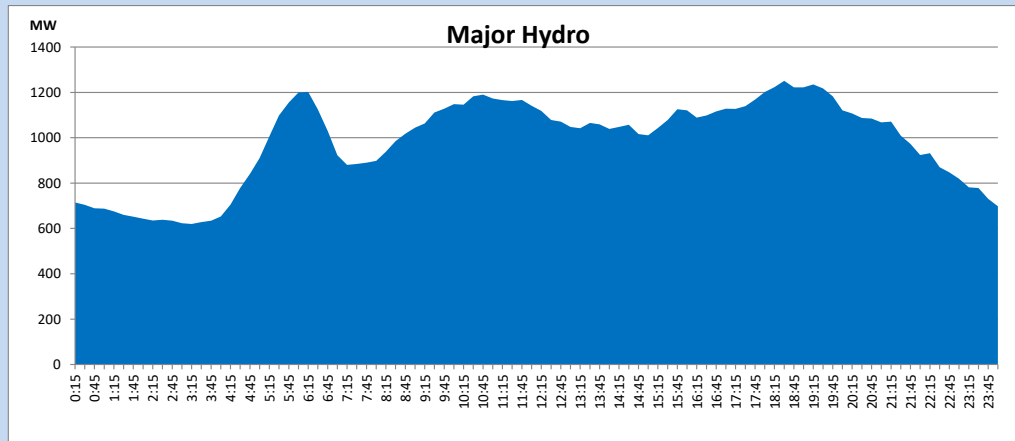
IPP Oil Plant Generation during

November 3, 2023



Major Hydro Generation during

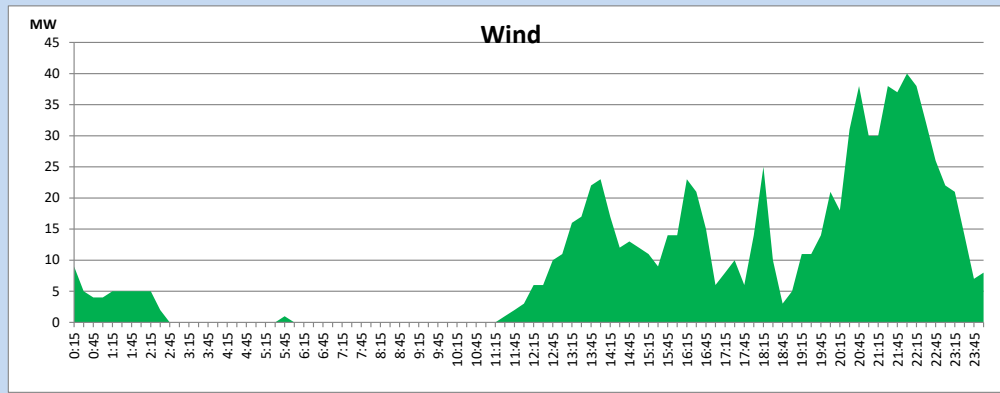
November 3, 2023



Wind Generation during

November 3, 2023

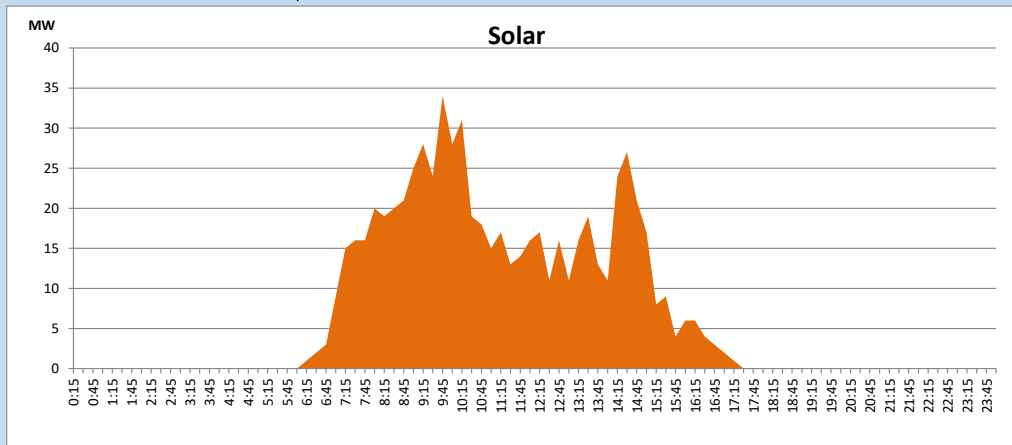
Based on Telemetered Power Stations only



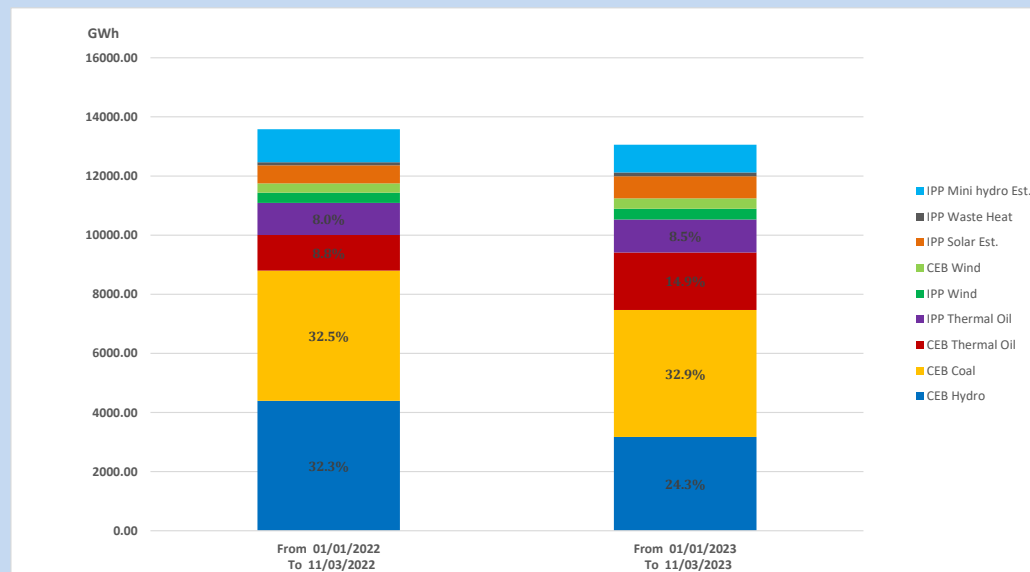
Solar Generation during

November 3, 2023

Based on Telemetered Power Stations only



15. Cumulative Dispatch Comparison with Last Year



Cumulative dispatch
 From 01/01/2022 To 11/03/2022
 From 01/01/2023 To 11/03/2023

13586 GWh
 13063 GWh

The above figures are including contribution from roof top solar, non telemetered solar and mini hydro plants (figures have been adjusted based on the data from the CEB monthly review reports.)

Thermal Plant Fuel types

Table 08

Power Station	Primary Fuel
CEB Thermal	
Sapugaskanda 1	Heavy Fuel
Sapugaskanda 2	Heavy Fuel
Kelanitissa Small Gas Turbines	Auto Diesel
GT 7 - Kelanitissa	Auto Diesel
Kelanitissa CCY	Naphtha or Diesel
Lakvijaya 1	Coal
Lakvijaya 2	Coal
Lakvijaya 3	Coal
Uthuru Janani	Heavy Fuel
Barge CEB	Heavy Fuel
KCCPS -2	Auto Diesel

Power Station	Primary Fuel
Private Thermal	
West Coast	Auto Diesel / Heavy Fuel
ACE Matara	Heavy Fuel
ACE Embilipitiya	Heavy Fuel

Major Incidents reported during the day

November 3, 2023

- 1) Mathugama – Kukule 132kV cct 01 tripped from both ends at 06:09hrs due to the operation of distance protection. The cct was normalized at 06:17hrs.
- 2) Athurugiriya – Thulhiriya – New Polpitiya 132kV cct tripped from New Polpitiya end and tripped and A/R from Athurugiriya and Thulhiriya ends at 15:42hrs, due to the operation of distance protection. The cct was normalized at 15:46hrs.
- 3) Upper Kothmale pond spilling started at 20:44hrs and stopped at 05:19hrs (04.11.2023).
- 4) Kukule pond spilling continues to the present hour.