

Generation and Reservoirs Statistics

November 1, 2023



PUBLIC UTILITIES COMMISSION OF SRI LANKA

1. Daily Generation Mix in MWh

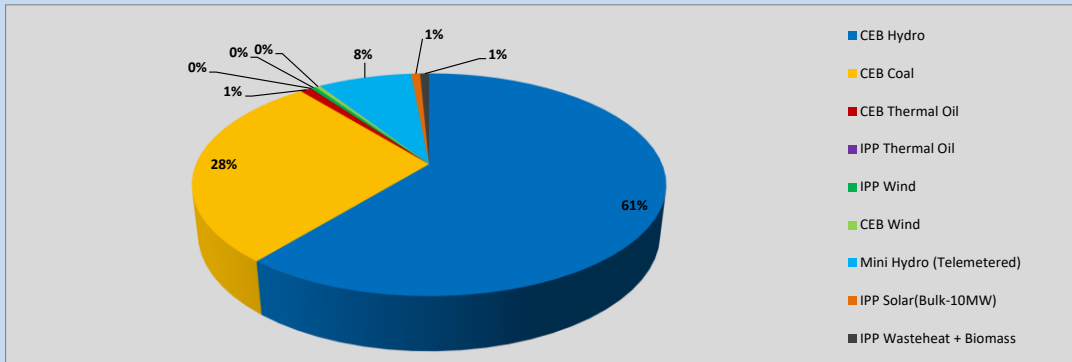


Table 01

	Generation (MWh)
CEB Hydro	22,820
CEB Coal	10,575
CEB Thermal Oil	346
IPP Thermal Oil	-
IPP Wind	156
CEB Wind	150
Mini Hydro (Telemetered)	2,867
IPP Solar (Bulk)	275
IPP Waste heat + Biomass	273
Total Generation (Excluding estimated figures)	37,462
* Estimated unserved energy	0
* Estimated Mini Hydro (Non telemetered)	2003
* Estimated IPP Solar PV (Bulk 1-10MW)	304
* Estimated Solar Roof Top PV	1640
Total Generation (Including estimated figures)	41,409

* Estimated figures of CEB generation report

Table 02

	Installed Capacity (MW)
CEB Hydro	1409
CEB Coal	810
CEB Thermal Oil	781
IPP Thermal Oil (West Coast, ACE Matara and ACE Embilipitiya)	387
IPP Wind	148
CEB Wind	100
Mini Hydro	416
IPP Waste heat + Biomass	50
IPP Solar	130
Rooftop Solar* (Ordinary)	267
Rooftop Solar* (LT Bulk)	256
Rooftop Solar* (HT Bulk)	61

Data Source - Monthly Review Report [May-2023]

2. Cumulative Dispatch

Following data excludes the contribution from roof top solar, non telemetered solar and mini hydro plants

Table 03 - Current Month

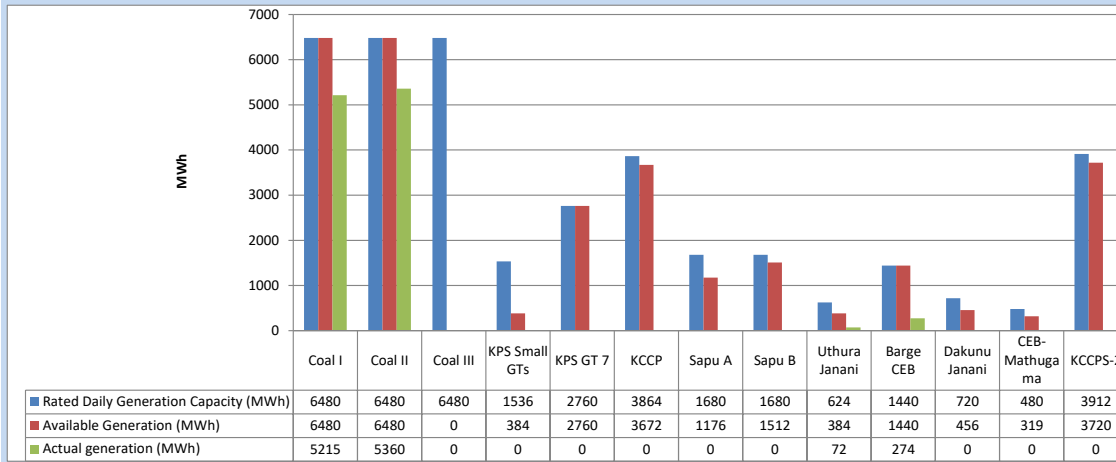
Category	Dispatch (GWh)	
CEB Hydro	23	60.43%
CEB Coal	11	28.00%
CEB Thermal Oil	0	0.93%
IPP Thermal	0	0.00%
SPP Wind	0	0.42%
CEB Wind	0	0.40%
Mini Hydro (Telemetered)	3	7.60%
IPP Solar (Bulk-10MW)	0	0.71%
IPP Waste heat + BMP	0	0.71%
Total	38	

Table 04 - Current Year

Category	Dispatch (GWh)	
CEB Hydro	3,137	26.79%
CEB Coal	4,286	36.60%
CEB Thermal Oil	1,954	16.69%
IPP Thermal	1,114	9.51%
SPP Wind	347	2.96%
CEB Wind	356	3.04%
Mini Hydro (Telemetered)	312	2.67%
IPP Solar (Bulk-10MW)	91	0.78%
IPP Waste heat	108	0.93%
Total	11,710	

3. CEB owned Thermal Plant Dispatch

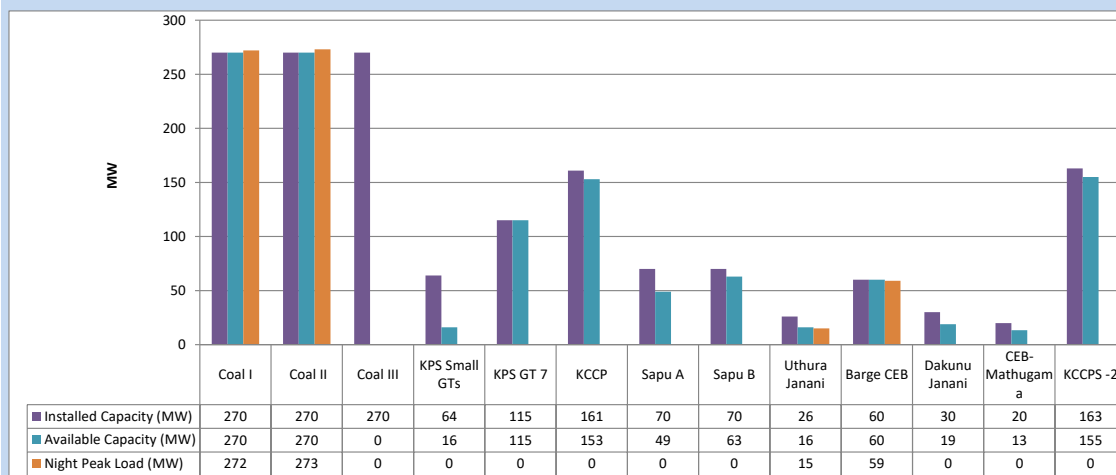
November 1, 2023



Available Generation is estimated based on plant availability at 6.00am on

November 2, 2023

4. CEB owned Thermal Plant Loading at the Night Peak

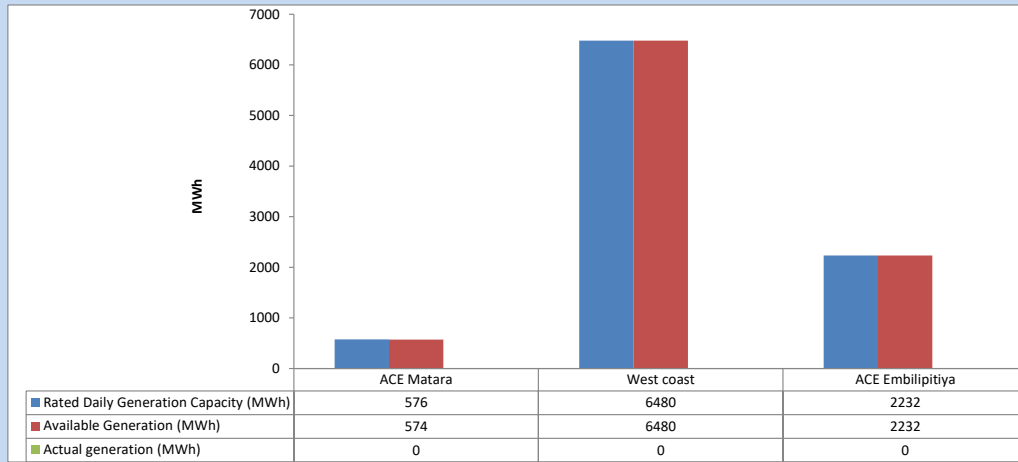


Plant availability is recorded at 6.00 am on

November 2, 2023

5. IPP owned Thermal Plant Dispatch

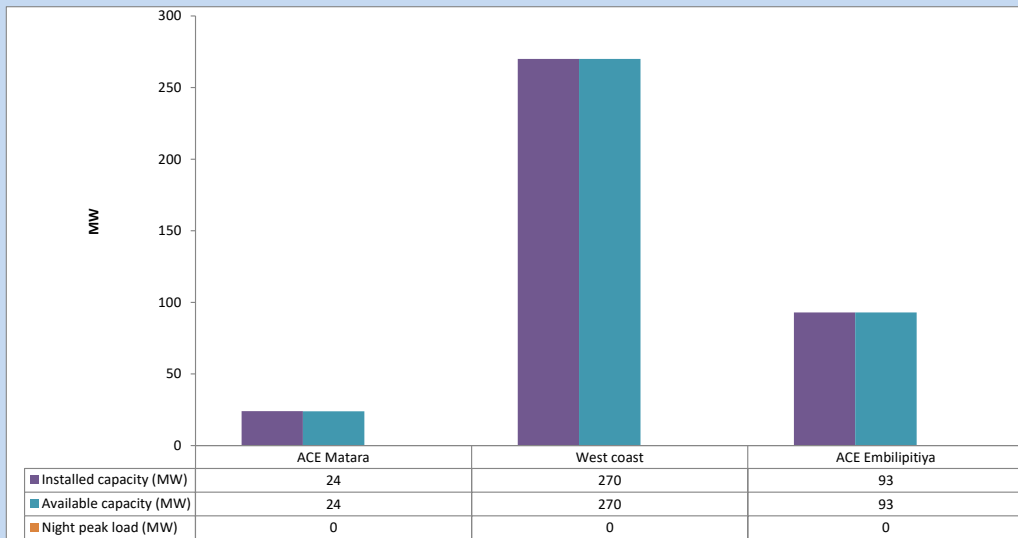
November 1, 2023



Available Generation is estimated based on plant availability at 6.00am on

November 2, 2023

6. IPP owned Thermal Plant Loading at the Night Peak

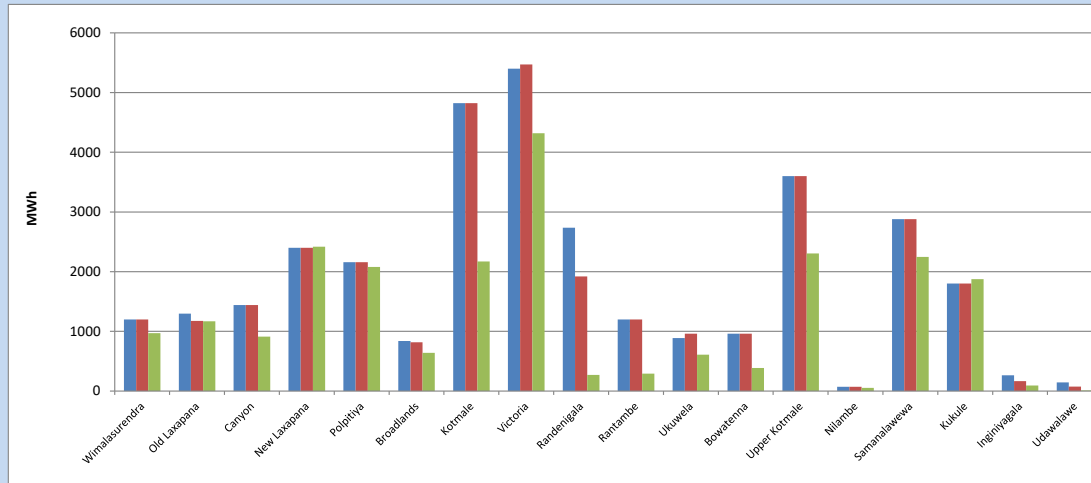


Plant availability is recorded at 6.00 am on

November 2, 2023

7. Major Hydro Plant Dispatch

November 1, 2023

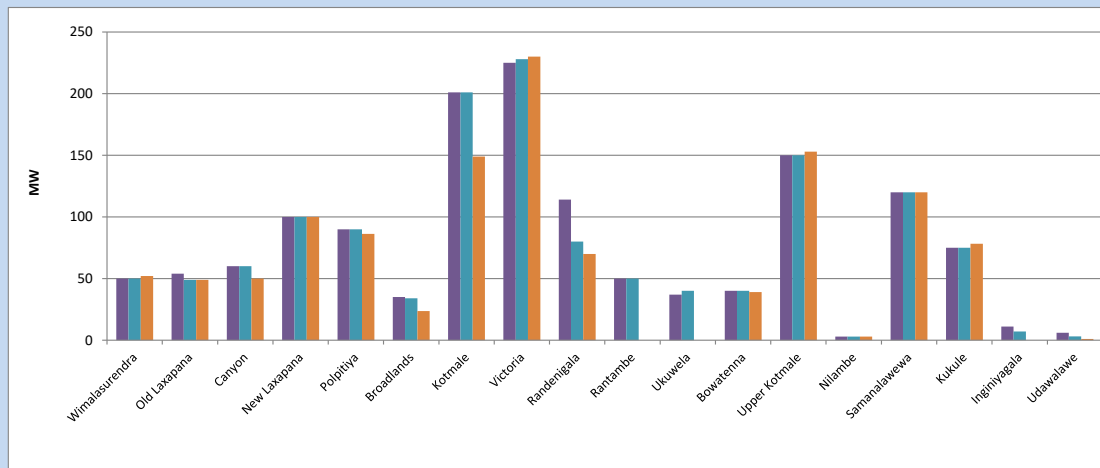


Available Generation is estimated based on plant availability at 6.00am on November 2, 2023
Broadlands power plant is operating in the Commissioning Stage

November 2, 2023

8. Major Hydro Plant Loading at Night Peak

November 1, 2023



Plant availability is recorded at 6.00 am on November 2, 2023
Broadlands power plant is operating in the Commissioning Stage

November 2, 2023

9. Summary of Major Plant performance

Table 05

Plant	Installed Capacity	Plant Availability	Night peak Load	Plant Dispatch
	(MW)	(MW)	(MW)	(MWh)
Wimalasurendra	50	50	52	970
Old Laxapana Canyon	54	49	49	1,169
New Laxapana	60	60	50	911
Polpitiya	100	100	100	2,419
Broadlands	90	90	86	2,080
Kotmale	35	34	24	639
Victoria	201	201	149	2,170
Randenigala	225	228	230	4,318
Rantambe	114	80	70	271
Ukuwela	50	50	0	292
Bowatenna	37	40	0	609
Upper Kotmale	40	40	39	388
Nilambe	150	150	153	2,304
Samanalawewa	3	3	3	54
Kukule	120	120	120	2,248
Inginiyagala	75	75	78	1,873
Udawalawe	11	7	0	94
Puttalam Coal I	6	3	1	11
Puttalam Coal II	270	270	272	5,215
Puttalam Coal III	270	270	273	5,360
KPS Small GTs	270	0	0	0
KPS GT 7	64	16	0	0
KCCP	115	115	0	0
Sapugaskanda A	161	153	0	0
Sapugaskanda B	70	49	0	0
Uthura Janani	70	63	0	0
Barge CEB	26	16	15	72
CEB-Hambantota	60	60	59	274
CEB-Mathugama	30	19	0	0
ACE Matara	20	13	0	0
Asia Power	24	24	0	0
KCCPS -2	50	0	0	0
West Coast	163	155	0	0
Nothern Power	270	270	0	0
ACE Embilipitiya	36	0	0	0
Total	93	93	0	0
	3,483	2,966	1,945	37,462

Plant availability is the availability recorded at 6 am on

November 2, 2023

10. Contribution to the Night Peak in MW

November 1, 2023

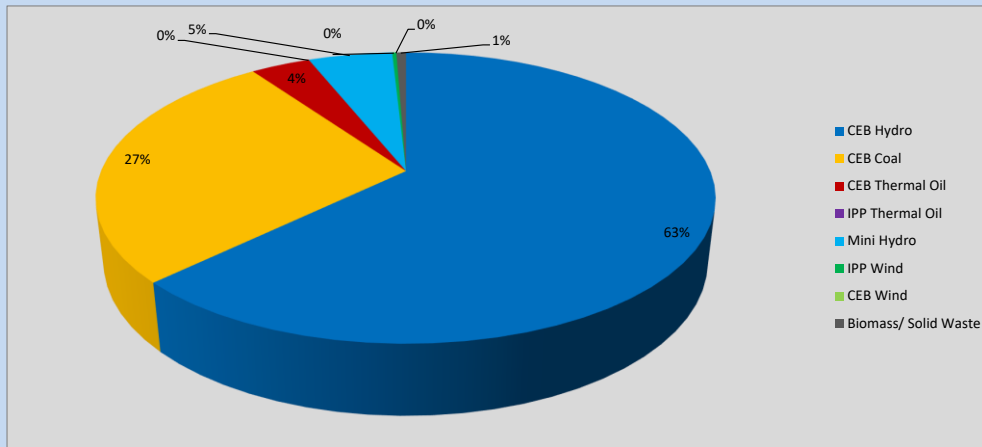


Table 06

CEB Hydro	1252	MW
CEB Coal	545	MW
CEB Thermal Oil	74	MW
IPP Thermal Oil	0	MW
Mini Hydro (Telemetered)	104	MW
IPP Wind	5.2	MW
CEB Wind	0	MW
Biomass/ Solid Waste	12	MW

Recorded Peak Demand Data

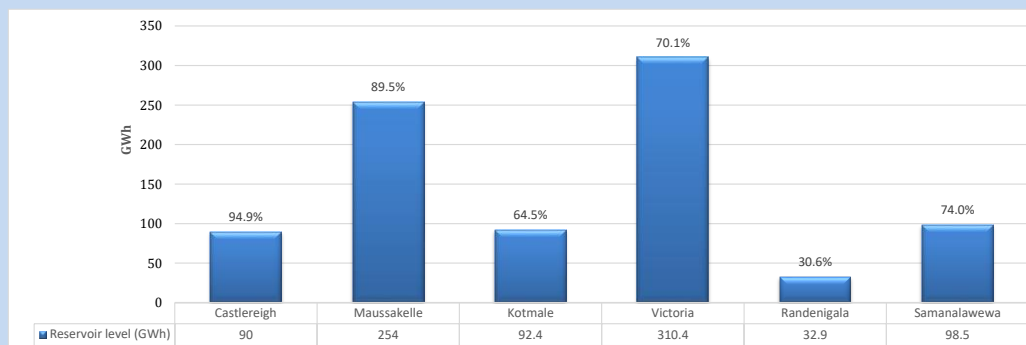
Table 07

Night Peak*	1,993	MW
Day Peak Maximum Demand	1,965	MW
Day Peak Minimum Demand	1,607	MW
Off Peak Minimum Demand	1,109	MW

Above figures are excluding contribution from roof top solar, non telemetered solar and mini hydro plants

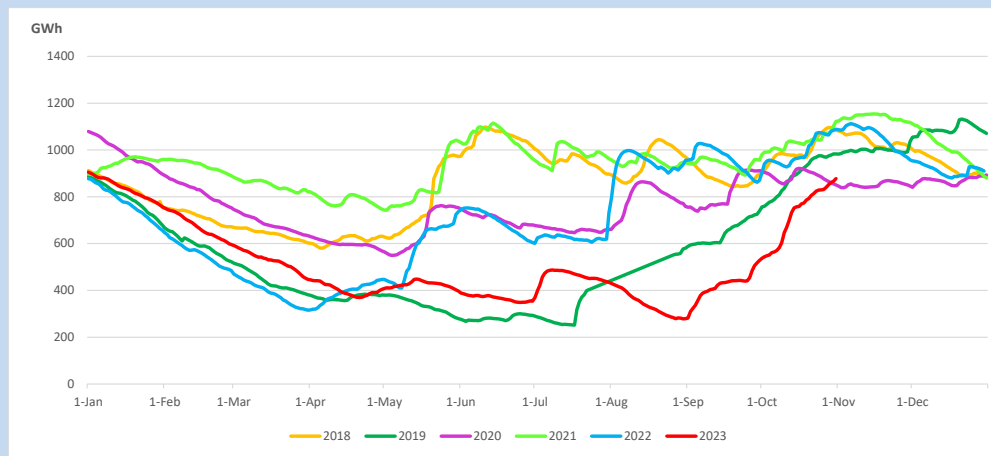
Reservoir Levels -

as at 06.00 Hr on November 2, 2023

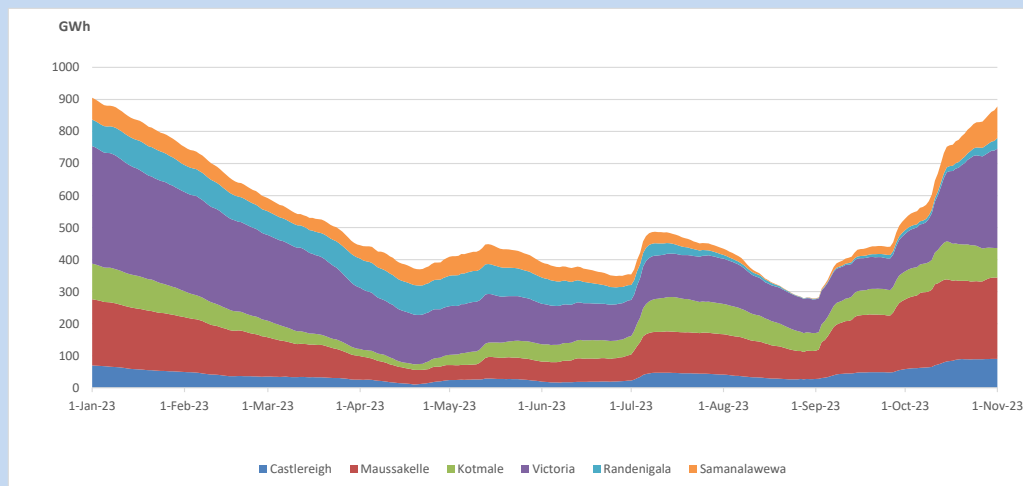


Total Reservoir Level 878.2 GWh
 % of Total capacity 72.9%

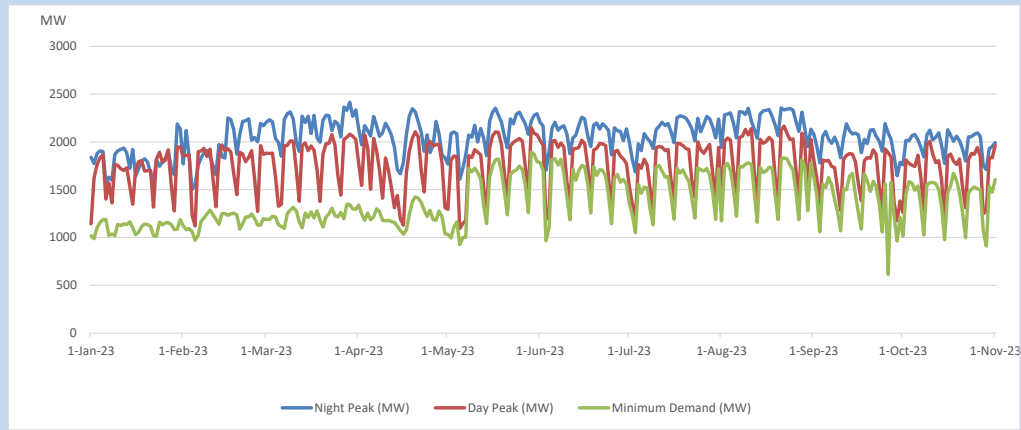
11. Comparison of Total Reservoir Storage Levels with Past Years



12. Variation of Major Hydro Reservoir Levels in the current year (GWh)



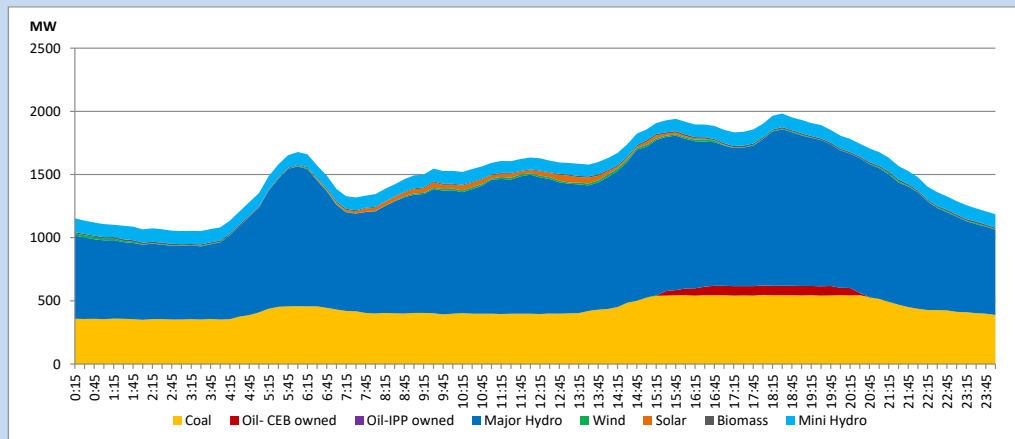
13. Variation of Demand during the current year



The above figures are excluding contribution from roof top solar, non telemetered solar and mini hydro plants

14. Daily Load Curve

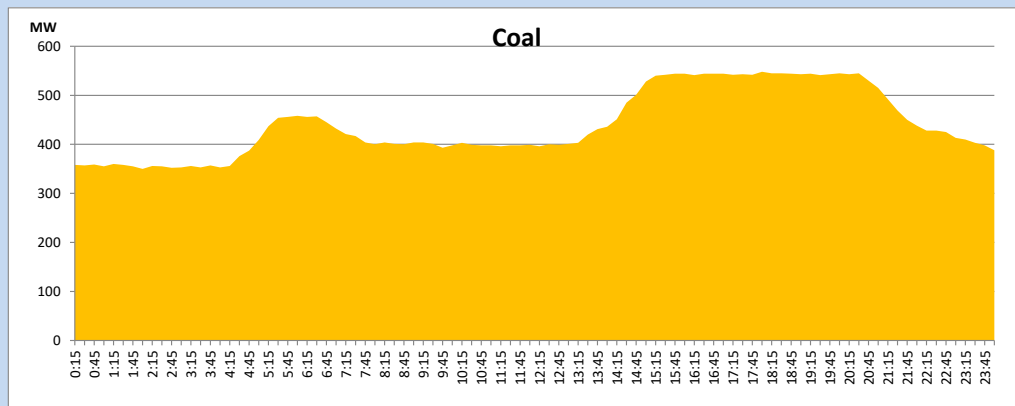
November 1, 2023



Solar and wind data is based on Telemetered Power Stations only

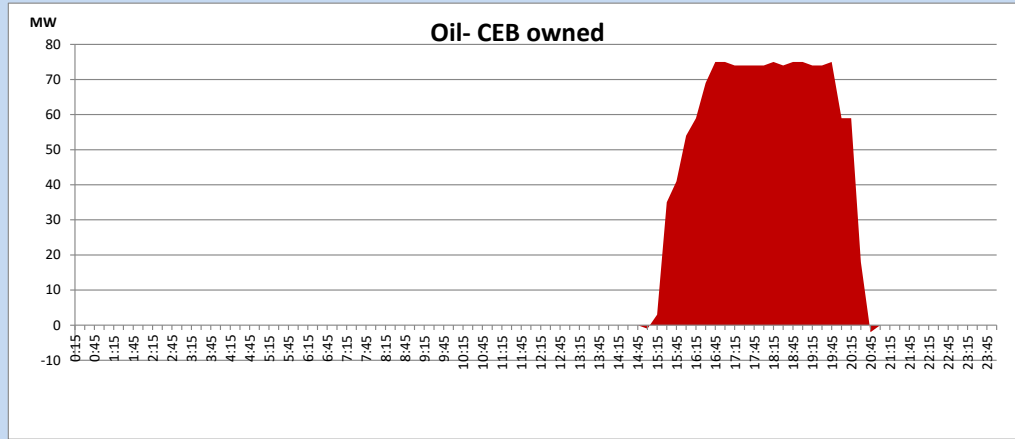
Coal Generation during

November 1, 2023



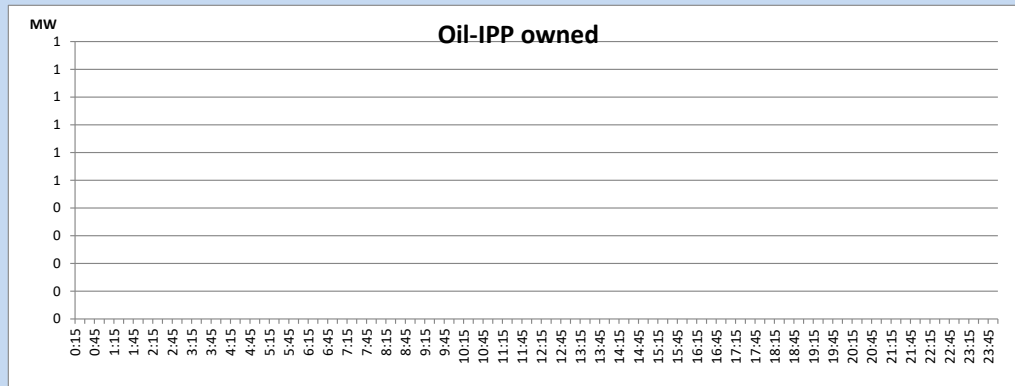
CEB Oil Plant Generation during

November 1, 2023



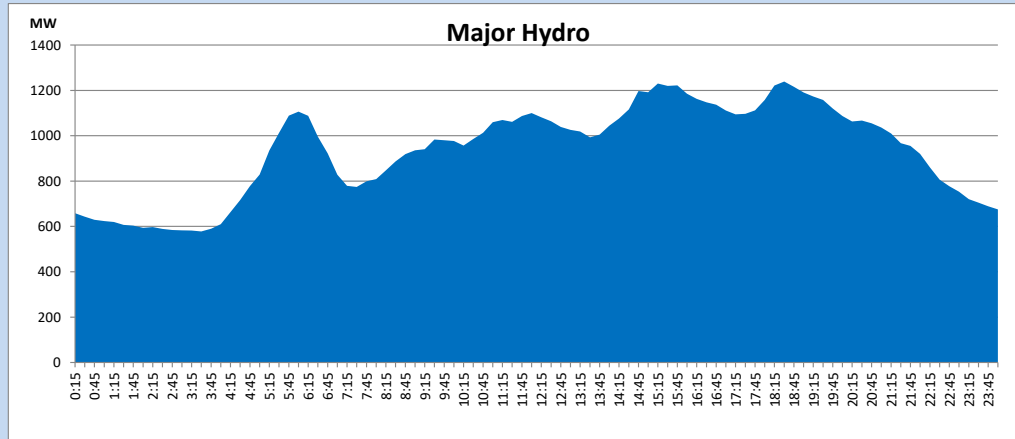
IPP Oil Plant Generation during

November 1, 2023



Major Hydro Generation during

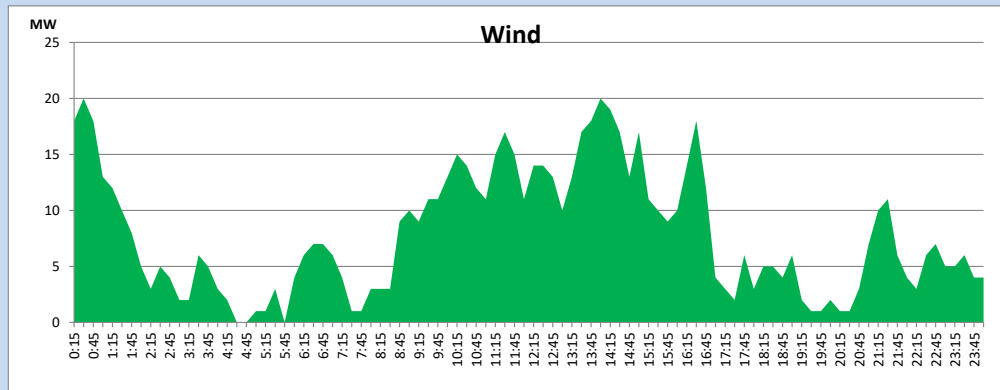
November 1, 2023



Wind Generation during

November 1, 2023

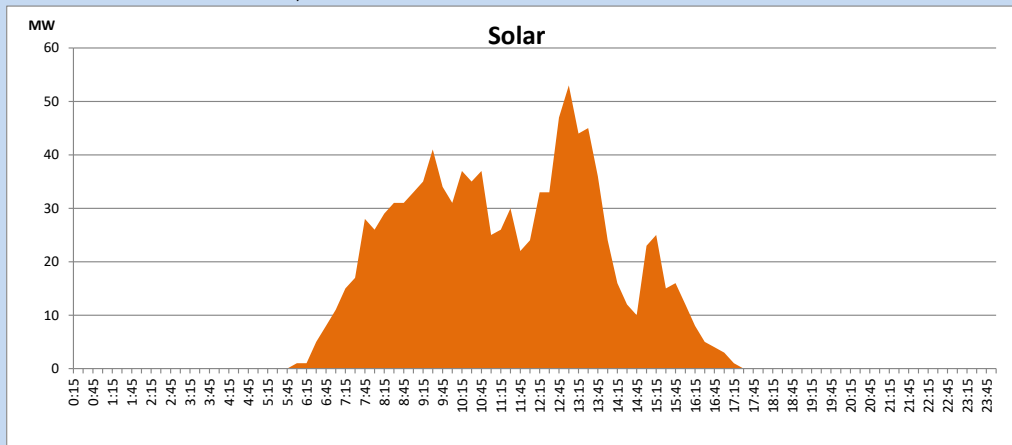
Based on Telemetered Power Stations only



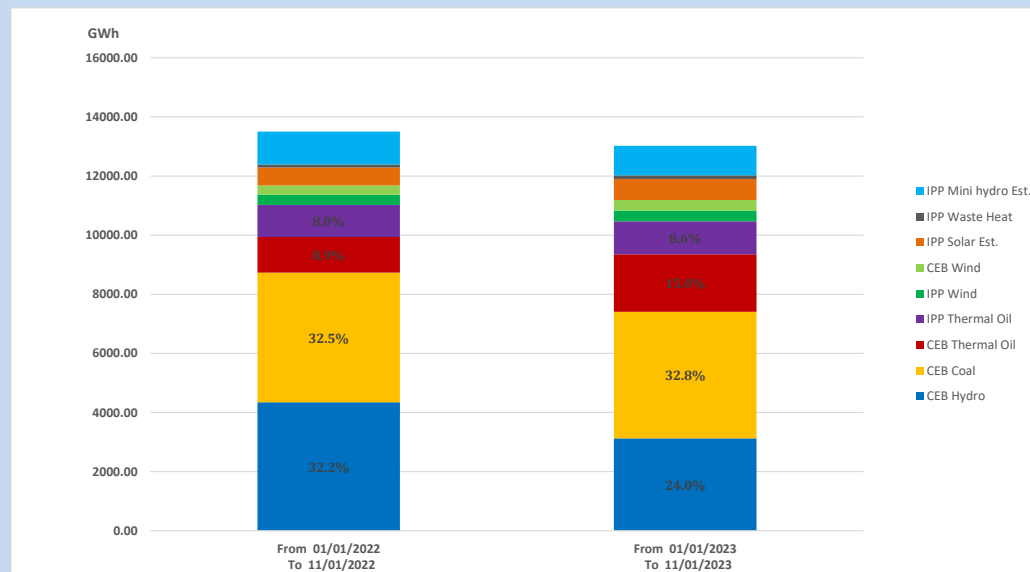
Solar Generation during

November 1, 2023

Based on Telemetered Power Stations only



15. Cumulative Dispatch Comparison with Last Year



Cumulative dispatch

From 01/01/2022 To 11/01/2022

13502 GWh

From 01/01/2023 To 11/01/2023

13024 GWh

The above figures are including contribution from roof top solar, non telemetered solar and mini hydro plants (figures have been adjusted based on the data from the CEB monthly review reports.)

Thermal Plant Fuel types

Table 08

Power Station	Primary Fuel
CEB Thermal	
Sapugaskanda 1	Heavy Fuel
Sapugaskanda 2	Heavy Fuel
Kelanitissa Small Gas Turbines	Auto Diesel
GT 7 - Kelanitissa	Auto Diesel
Kelanitissa CCY	Naphtha or Diesel
Lakvijaya 1	Coal
Lakvijaya 2	Coal
Lakvijaya 3	Coal
Uthuru Janani	Heavy Fuel
Barge CEB	Heavy Fuel
KCCPS -2	Auto Diesel

Power Station	Primary Fuel
Private Thermal	
West Coast	Auto Diesel / Heavy Fuel
ACE Matara	Heavy Fuel
ACE Embilipitiya	Heavy Fuel

Major Incidents reported during the day

November 1, 2023

- 1) Laxapana pond, Norton pond, Canyon pond & Broadland pond spilled intermittently and spilling continues to the present hour.
- 2) Kukule pond spilling continues to the present hour
- 3) Upper Kotmale unit 02 made forced shutdown at 12:16hrs for governor oil cooler cleaning and governor oil sump filling work. Upper Kotmale unit 02 resumed generation at 13:44hrs.
- 4) Sub L 220/132/33kV T/F 02 tripped from all three ends at 13:26hrs with the indication of "Mechanical protection trip". SUB L 220/132/33kV T/F 02 was normalized by 18:20hrs.
- 5) Ukuwela both units made unavailable at 17.30hrs due to intake pressure low. Ukuwela unit 01 & 02 resumed generation at 00:13hrs (02.11.2023) & 03:46hrs (02.11.2023) respectively.