

Generation and Reservoirs Statistics

September 30, 2023



PUBLIC UTILITIES COMMISSION OF SRI LANKA

1. Daily Generation Mix in MWh

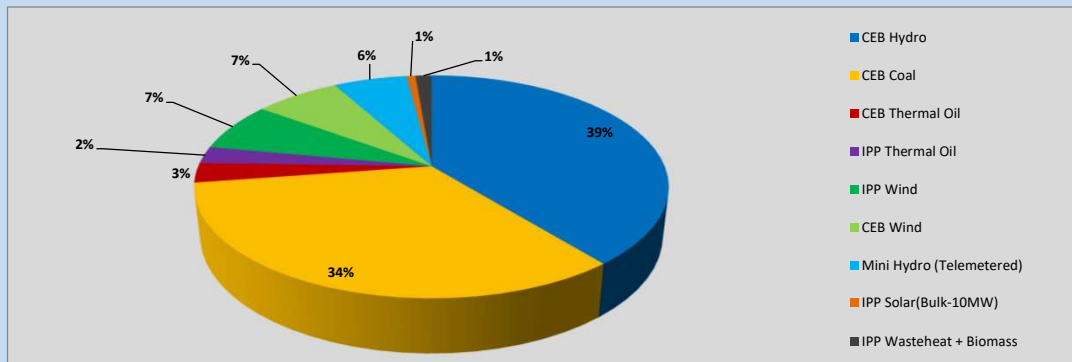


Table 01

	Generation (MWh)
CEB Hydro	12,419
CEB Coal	10,627
CEB Thermal Oil	905
IPP Thermal Oil	780
IPP Wind	2,250
CEB Wind	2,198
Mini Hydro (Telemetered)	1,902
IPP Solar (Bulk)	230
IPP Waste heat + Biomass	418
Total Generation (Excluding estimated figures)	31,729
* Estimated unserved energy	0
* Estimated Mini Hydro (Non telemetered)	1738
* Estimated IPP Solar PV (Bulk 1-10MW)	304
* Estimated Solar Roof Top PV	1660
Total Generation (Including estimated figures)	35,431

* Estimated figures of CEB generation report

Table 02

	Installed Capacity (MW)
CEB Hydro	1409
CEB Coal	810
CEB Thermal Oil	781
IPP Thermal Oil (West Coast, ACE Matara and ACE Embilipitiya)	387
IPP Wind	148
CEB Wind	100
Mini Hydro	416
IPP Waste heat + Biomass	50
IPP Solar	130
Rooftop Solar* (Ordinary)	267
Rooftop Solar* (LT Bulk)	256
Rooftop Solar* (HT Bulk)	61

Data Source - Monthly Review Report [May-2023]

2. Cumulative Dispatch

Following data excludes the contribution from roof top solar, non telemetered solar and mini hydro plants

Table 03 - Current Month

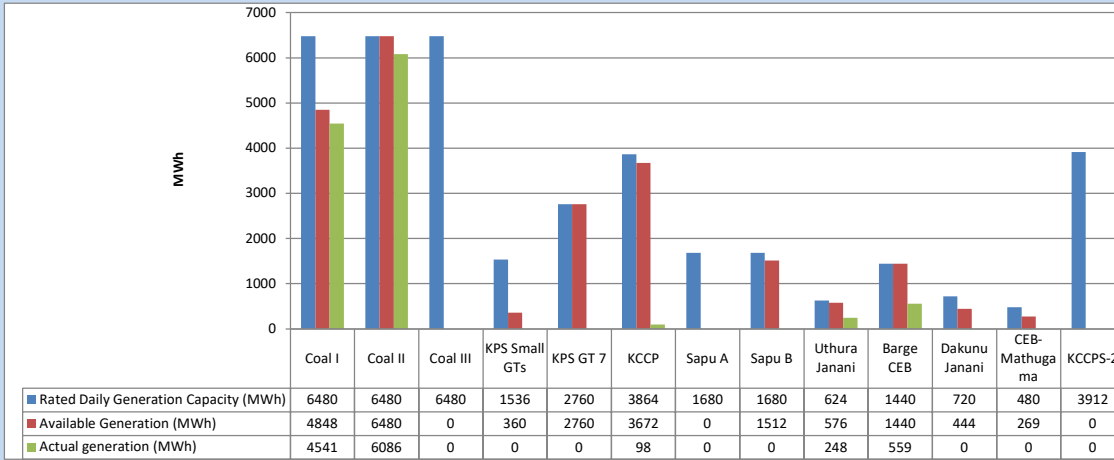
Category	Dispatch (GWh)	Percentage
CEB Hydro	267	24.16%
CEB Coal	335	30.33%
CEB Thermal Oil	208	18.88%
IPP Thermal	105	9.49%
SPP Wind	65	5.89%
CEB Wind	63	5.68%
Mini Hydro (Telemetered)	41	3.76%
IPP Solar(Bulk-10MW)	8	0.74%
IPP Waste heat + BMP	12	1.09%
Total	1,104	

Table 04 - Current Year

Category	Dispatch (GWh)	Percentage
CEB Hydro	2,566	24.29%
CEB Coal	3,919	37.10%
CEB Thermal Oil	1,894	17.93%
IPP Thermal	1,095	10.36%
SPP Wind	325	3.08%
CEB Wind	332	3.14%
Mini Hydro (Telemetered)	252	2.38%
IPP Solar(Bulk-10MW)	82	0.78%
IPP Waste heat	99	0.94%
Total	10,564	

3. CEB owned Thermal Plant Dispatch

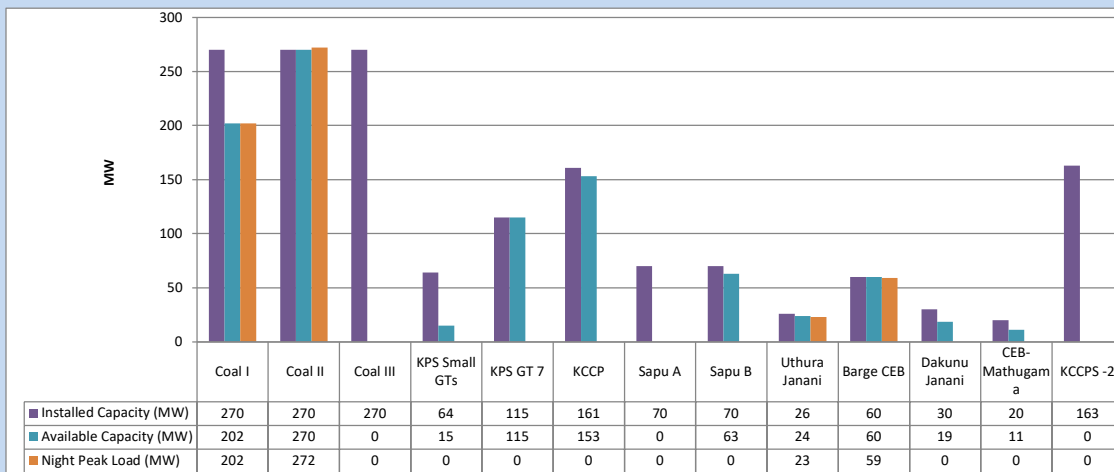
September 30, 2023



Available Generation is estimated based on plant availability at 6.00am on

October 1, 2023

4. CEB owned Thermal Plant Loading at the Night Peak

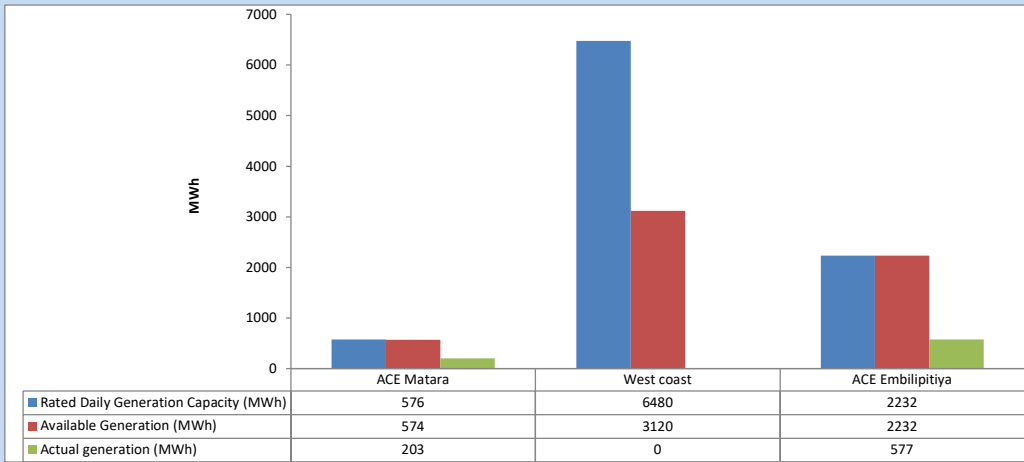


Plant availability is recorded at 6.00 am on

October 1, 2023

5. IPP owned Thermal Plant Dispatch

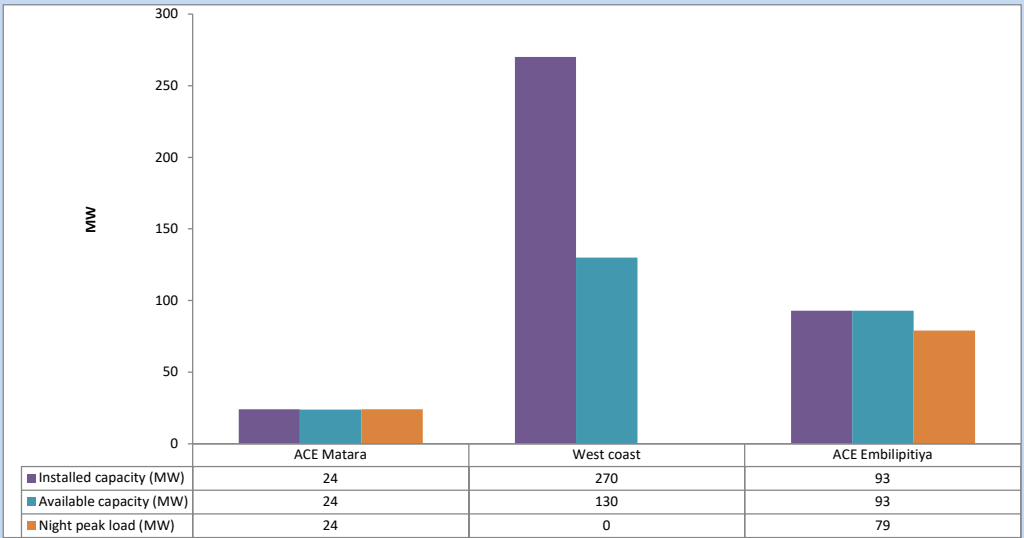
September 30, 2023



Available Generation is estimated based on plant availability at 6.00am on

October 1, 2023

6. IPP owned Thermal Plant Loading at the Night Peak

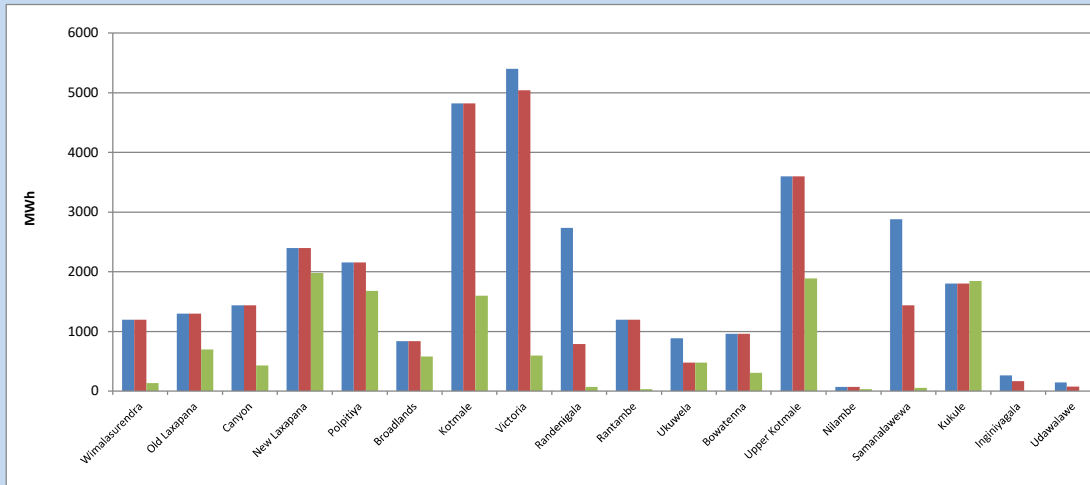


Plant availability is recorded at 6.00 am on

October 1, 2023

7. Major Hydro Plant Dispatch

September 30, 2023

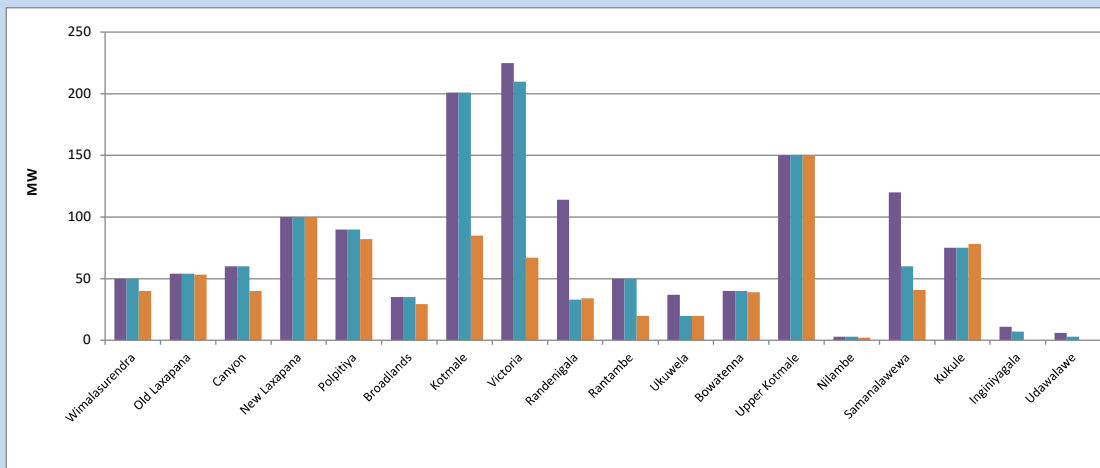


Available Generation is estimated based on plant availability at 6.00am on October 1, 2023
Broadlands power plant is operating in the Commissioning Stage

October 1, 2023

8. Major Hydro Plant Loading at Night Peak

September 30, 2023



Plant availability is recorded at 6.00 am on October 1, 2023
Broadlands power plant is operating in the Commissioning Stage

October 1, 2023

9. Summary of Major Plant performance

Table 05

Plant	Installed Capacity	Plant Availability	Night peak Load	Plant Dispatch
	(MW)	(MW)	(MW)	(MWh)
Wimalasurendra	50	50	40	137
Old Laxapana Canyon	54	54	53	700
New Laxapana	60	60	40	432
Polpitiya	100	100	100	1,982
Broadlands	90	90	82	1,680
Kotmale	35	35	29	578
Victoria	201	201	85	1,600
Randenigala	225	210	67	596
Rantambe	114	33	34	73
Ukuwela	50	50	20	31
Bowatenna	37	20	20	480
Upper Kotmale	40	40	39	308
Nilambe	150	150	150	1,887
Samanalawewa	3	3	2	32
Kukule	120	60	41	58
Inginiyagala	75	75	78	1,845
Udawalawe	11	7	0	0
Puttalam Coal I	6	3	0	0
Puttalam Coal II	270	202	202	4,541
Puttalam Coal III	270	270	272	6,086
KPS Small GTs	270	0	0	0
KPS GT 7	64	15	0	0
KCCP	115	115	0	0
Sapugaskanda A	161	153	0	98
Sapugaskanda B	70	0	0	0
Uthura Janani	70	63	0	0
Barge CEB	26	24	23	248
CEB-Hambantota	60	60	59	559
CEB-Mathugama	30	19	0	0
ACE Matara	20	11	0	0
Asia Power	24	24	24	203
KCCPS -2	50	0	0	0
West Coast	163	0	0	0
Nothern Power	270	130	0	0
ACE Embilipitiya	36	0	0	0
Total	93	93	79	577
	3,483	2,420	1,792	31,729

Plant availability is the availability recorded at 6 am on

October 1, 2023

10. Contribution to the Night Peak in MW

September 30, 2023

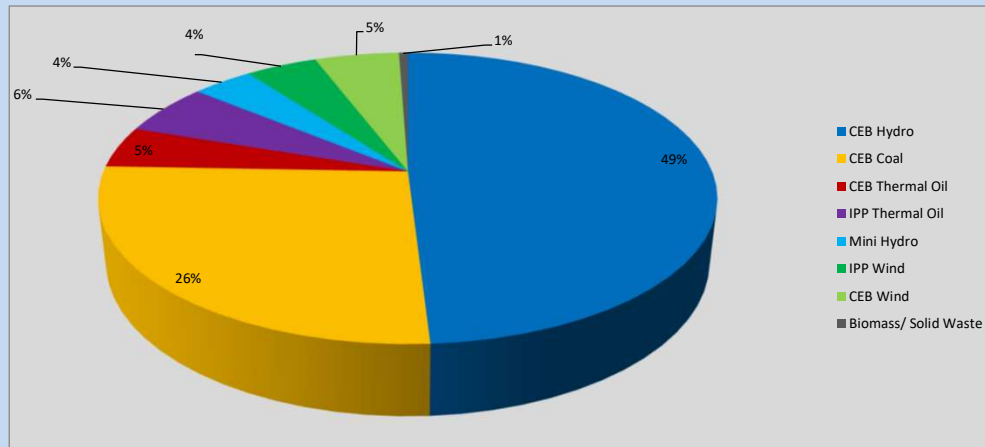


Table 06

CEB Hydro	876	MW
CEB Coal	474	MW
CEB Thermal Oil	82	MW
IPP Thermal Oil	103	MW
Mini Hydro (Telemetered)	68	MW
IPP Wind	79.8	MW
CEB Wind	94.1	MW
Biomass/ Solid Waste	10	MW

Recorded Peak Demand Data

Table 07

Night Peak*	1,787	MW
Day Peak Maximum Demand	1,383	MW
Day Peak Minimum Demand	1,209	MW
Off Peak Minimum Demand	928	MW

Above figures are excluding contribution from roof top solar, non telemetered solar and mini hydro plants

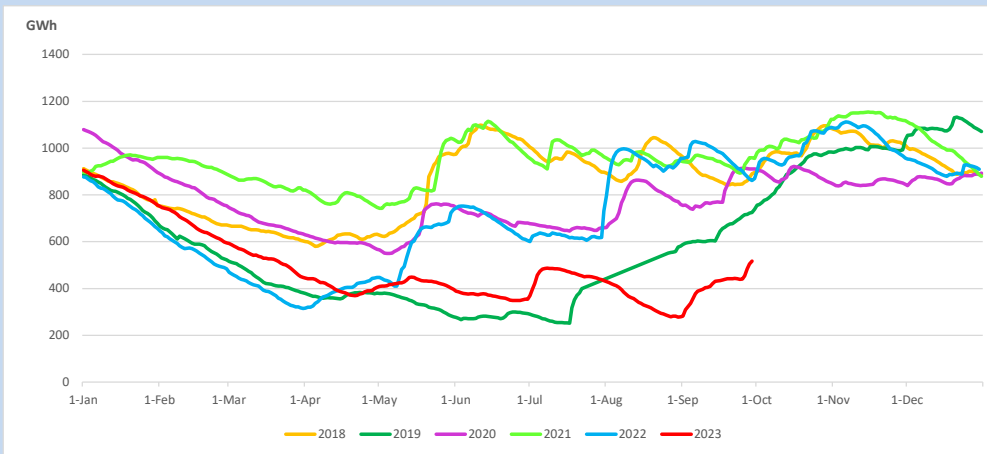
Reservoir Levels -

as at 06.00 Hr on October 1, 2023

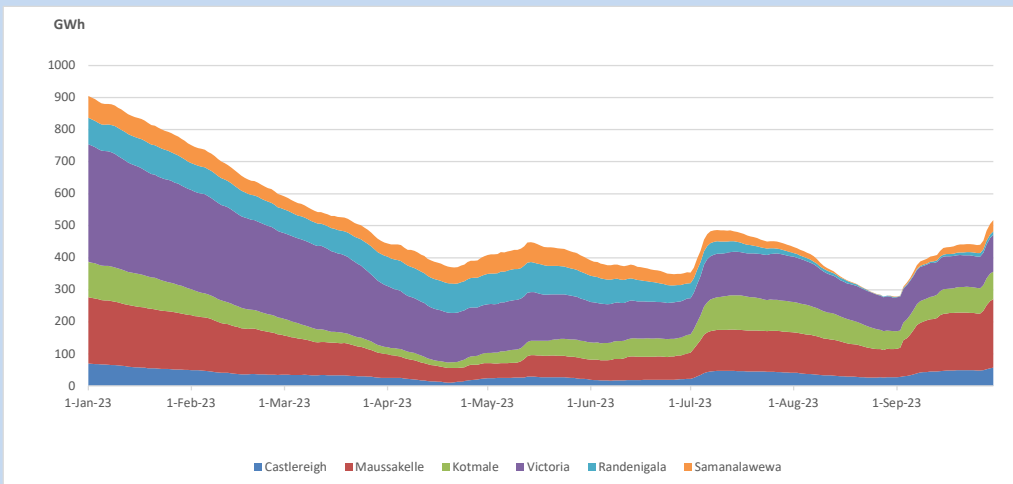


Total Reservoir Level 517.7 GWh
% of Total capacity 43.0%

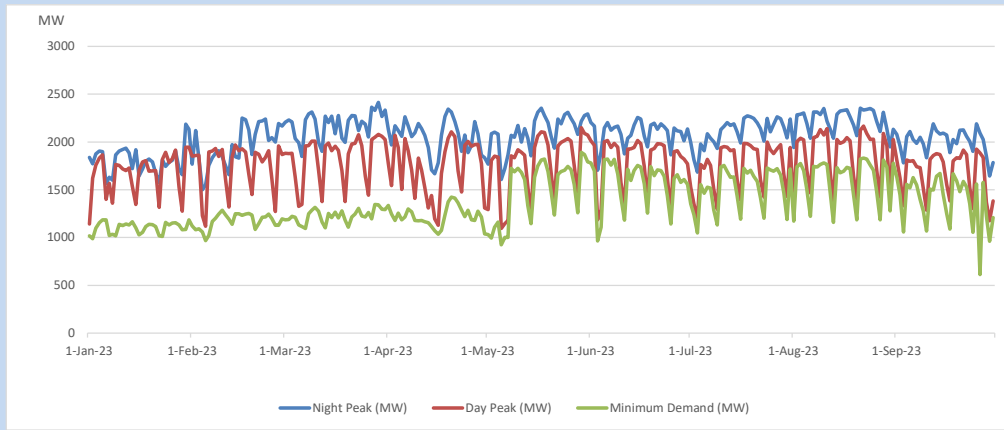
11. Comparison of Total Reservoir Storage Levels with Past Years



12. Variation of Major Hydro Reservoir Levels in the current year (GWh)



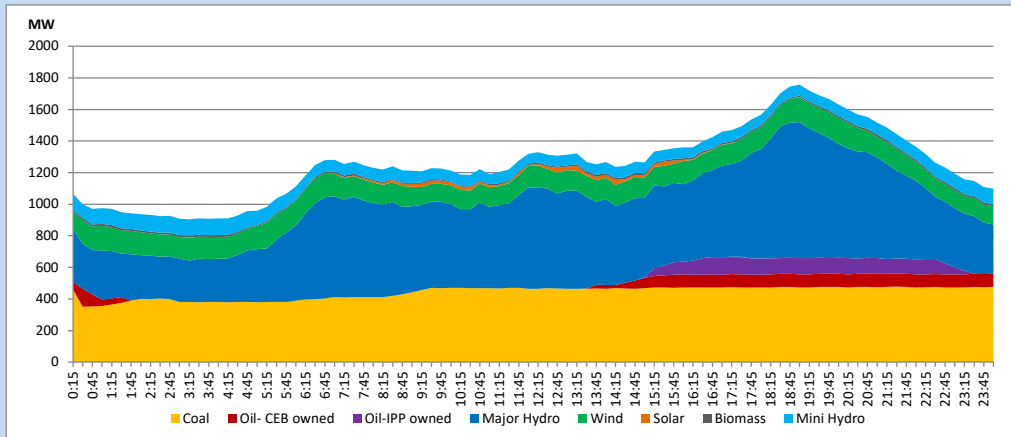
13. Variation of Demand during the current year



The above figures are excluding contribution from roof top solar, non telemetered solar and mini hydro plants

14. Daily Load Curve

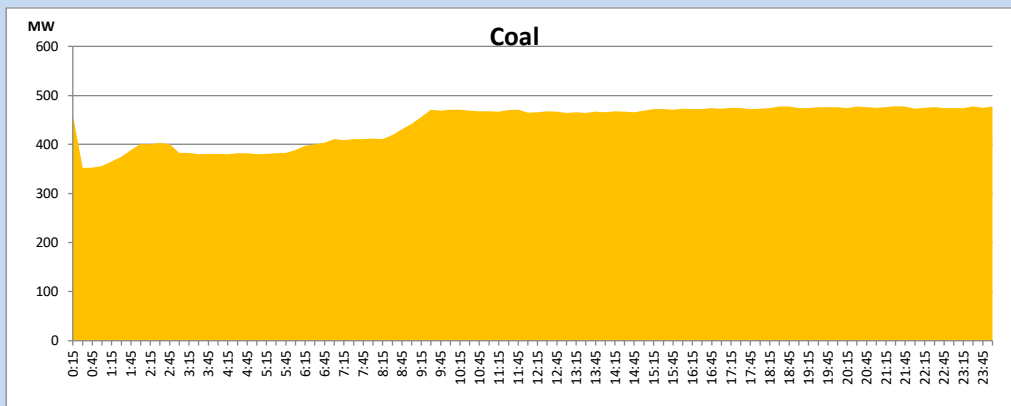
September 30, 2023



Solar and wind data is based on Telemetered Power Stations only

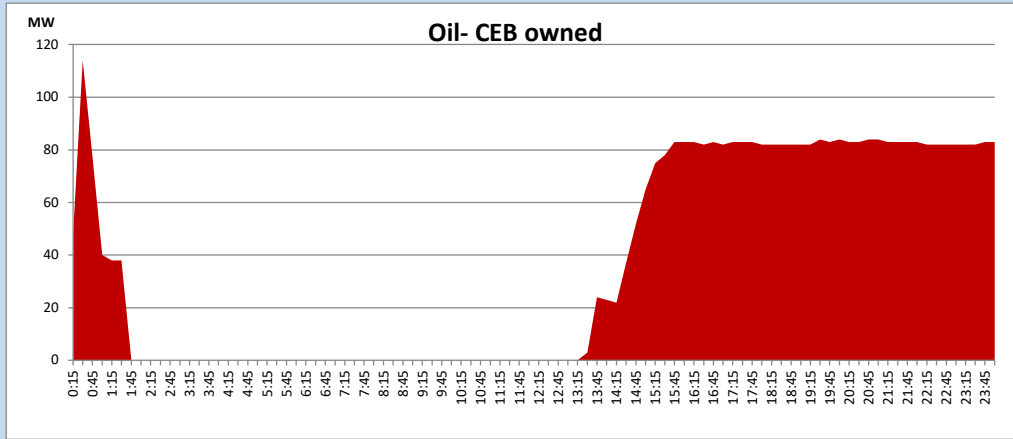
Coal Generation during

September 30, 2023



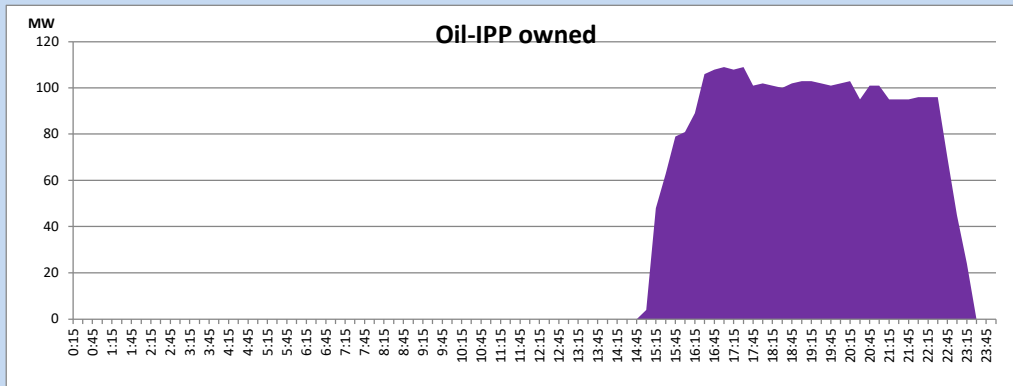
CEB Oil Plant Generation during

September 30, 2023



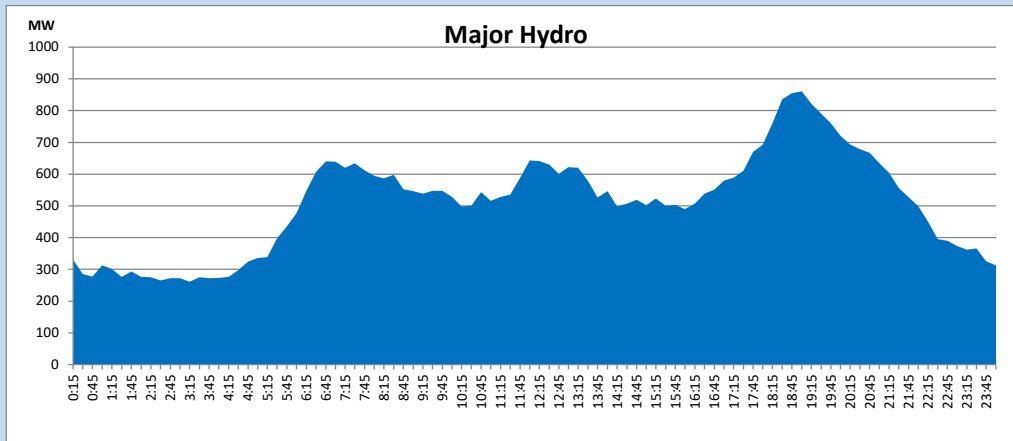
IPP Oil Plant Generation during

September 30, 2023



Major Hydro Generation during

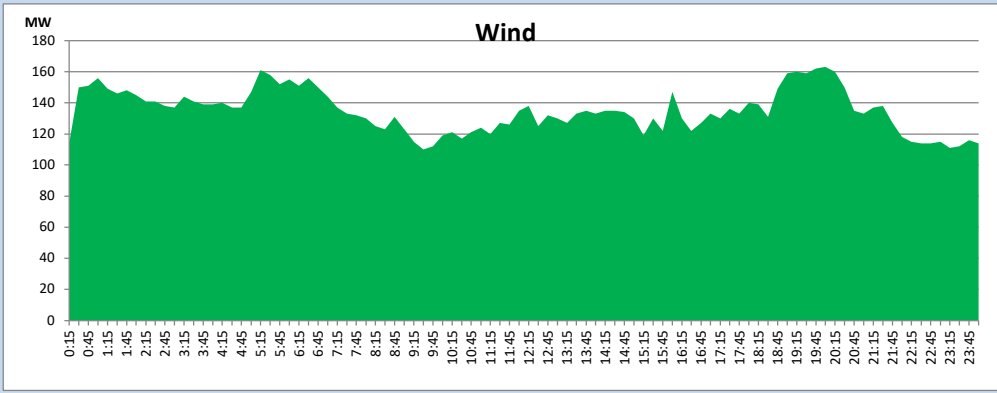
September 30, 2023



Wind Generation during

September 30, 2023

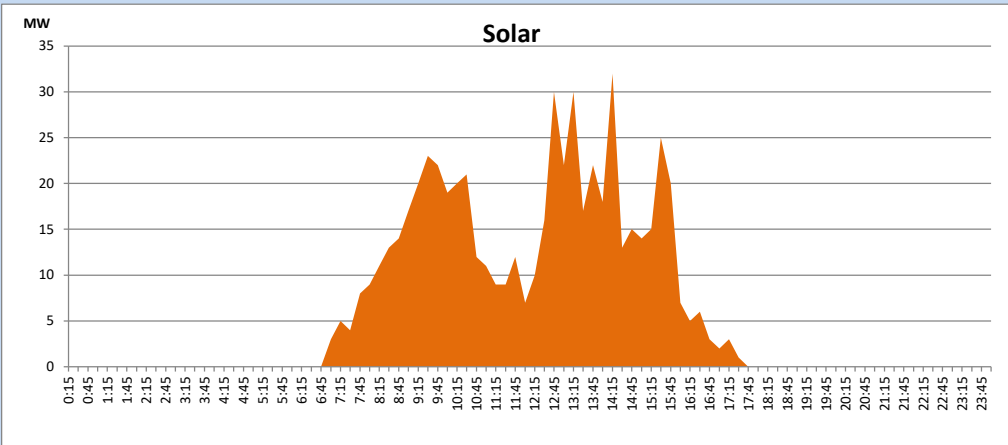
Based on Telemetered Power Stations only



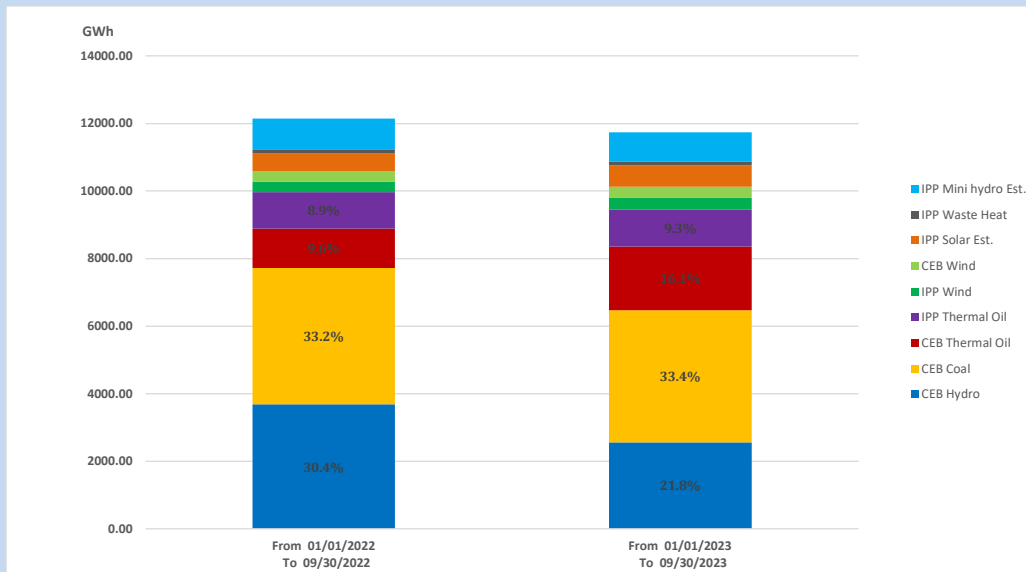
Solar Generation during

September 30, 2023

Based on Telemetered Power Stations only



15. Cumulative Dispatch Comparison with Last Year



Cumulative dispatch

From 01/01/2022 To 09/30/2022

12151 GWh

From 01/01/2023 To 09/30/2023

11732 GWh

The above figures are including contribution from roof top solar, non telemetered solar and mini hydro plants (figures have been adjusted based on the data from the CEB monthly review reports.)

Thermal Plant Fuel types

Table 08

Power Station	Primary Fuel
CEB Thermal	
Sapugaskanda 1	Heavy Fuel
Sapugaskanda 2	Heavy Fuel
Kelanitissa Small Gas Turbines	Auto Diesel
GT 7 - Kelanitissa	Auto Diesel
Kelanitissa CCY	Naphtha or Diesel
Lakvijaya 1	Coal
Lakvijaya 2	Coal
Lakvijaya 3	Coal
Uthuru Janani	Heavy Fuel
Barge CEB	Heavy Fuel
KCCPS -2	Auto Diesel

Power Station	Primary Fuel
Private Thermal	
West Coast	Auto Diesel / Heavy Fuel
ACE Matara	Heavy Fuel
ACE Embilipitiya	Heavy Fuel

Major Incidents reported during the day

September 30, 2023

1) Kukule spilling continues to present hour.

2) New Chilaw-Puttalam 132kV cct 01 tripped from both ends at 10:31hrs due to the operation of distance protection. The cct was normalized at 14:50hrs.