

Generation and Reservoirs Statistics

October 27, 2023



PUBLIC UTILITIES COMMISSION OF SRI LANKA

1. Daily Generation Mix in MWh

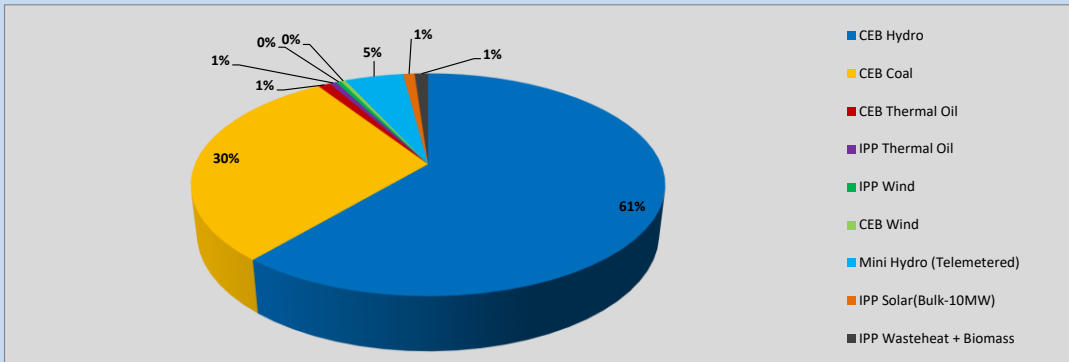


Table 01

	Generation (MWh)
CEB Hydro	22,861
CEB Coal	11,094
CEB Thermal Oil	373
IPP Thermal Oil	206
IPP Wind	155
CEB Wind	141
Mini Hydro (Telemetered)	1,794
IPP Solar (Bulk)	349
IPP Waste heat + Biomass	411
Total Generation (Excluding estimated figures)	37,384
* Estimated unserved energy	0
* Estimated Mini Hydro (Non telemetered)	3066
* Estimated IPP Solar PV (Bulk 1-10MW)	304
* Estimated Solar Roof Top PV	1930
Total Generation (Including estimated figures)	42,684

* Estimated figures of CEB generation report

Table 02

	Installed Capacity (MW)
CEB Hydro	1409
CEB Coal	810
CEB Thermal Oil	781
IPP Thermal Oil (West Coast, ACE Matara and ACE Embilipitiya)	387
IPP Wind	148
CEB Wind	100
Mini Hydro	416
IPP Waste heat + Biomass	50
IPP Solar	130
Rooftop Solar* (Ordinary)	267
Rooftop Solar* (LT Bulk)	256
Rooftop Solar* (HT Bulk)	61

Data Source - Monthly Review Report [May-2023]

2. Cumulative Dispatch

Following data excludes the contribution from roof top solar, non telemetered solar and mini hydro plants

Table 03 - Current Month

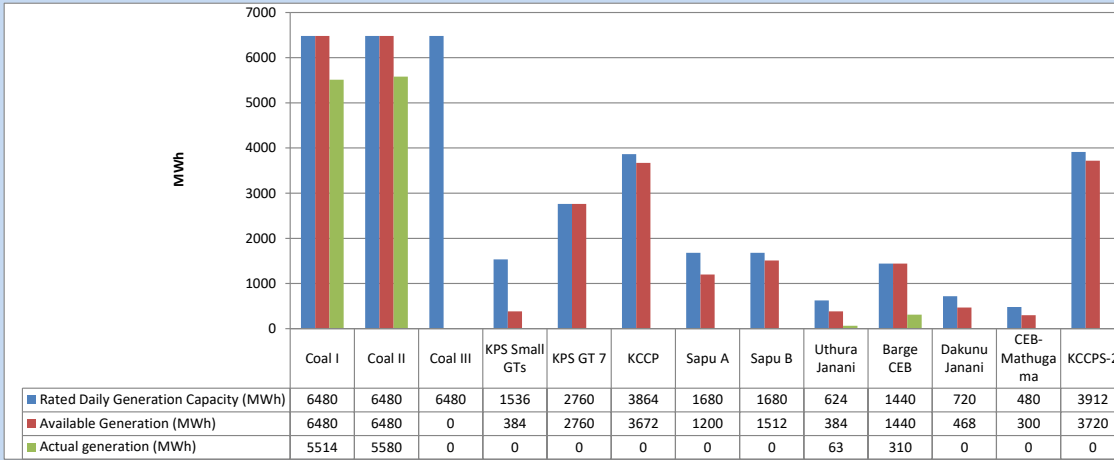
Category	Dispatch (GWh)	
CEB Hydro	472	48.26%
CEB Coal	315	32.21%
CEB Thermal Oil	59	6.07%
IPP Thermal	19	1.92%
SPP Wind	21	2.12%
CEB Wind	23	2.39%
Mini Hydro (Telemetered)	52	5.31%
IPP Solar(Bulk-10MW)	7	0.75%
IPP Waste heat + BMP	7	0.75%
Total	978	

Table 04 - Current Year

Category	Dispatch (GWh)	
CEB Hydro	3,037	26.32%
CEB Coal	4,234	36.69%
CEB Thermal Oil	1,953	16.92%
IPP Thermal	1,114	9.65%
SPP Wind	346	3.00%
CEB Wind	355	3.08%
Mini Hydro (Telemetered)	304	2.63%
IPP Solar(Bulk-10MW)	90	0.78%
IPP Waste heat	107	0.92%
Total	11,542	

3. CEB owned Thermal Plant Dispatch

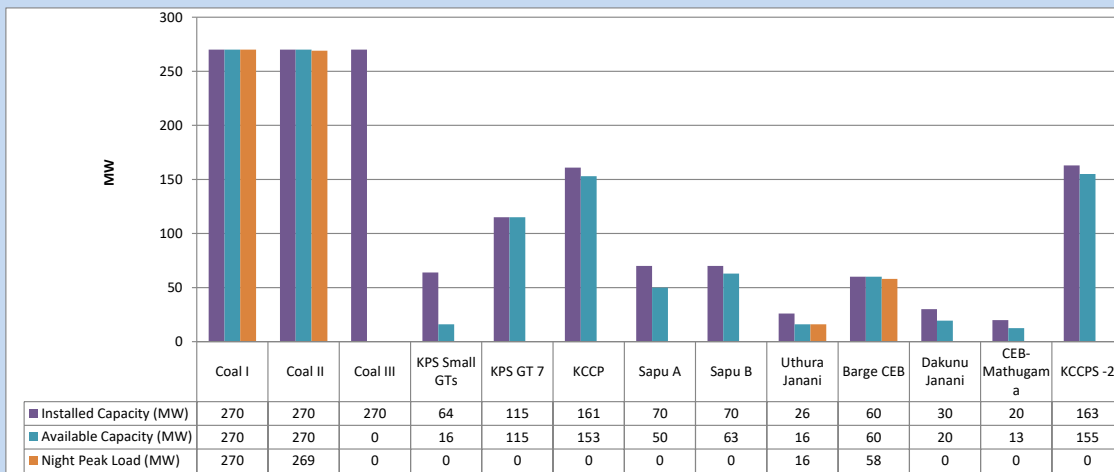
October 27, 2023



Available Generation is estimated based on plant availability at 6.00am on

October 28, 2023

4. CEB owned Thermal Plant Loading at the Night Peak

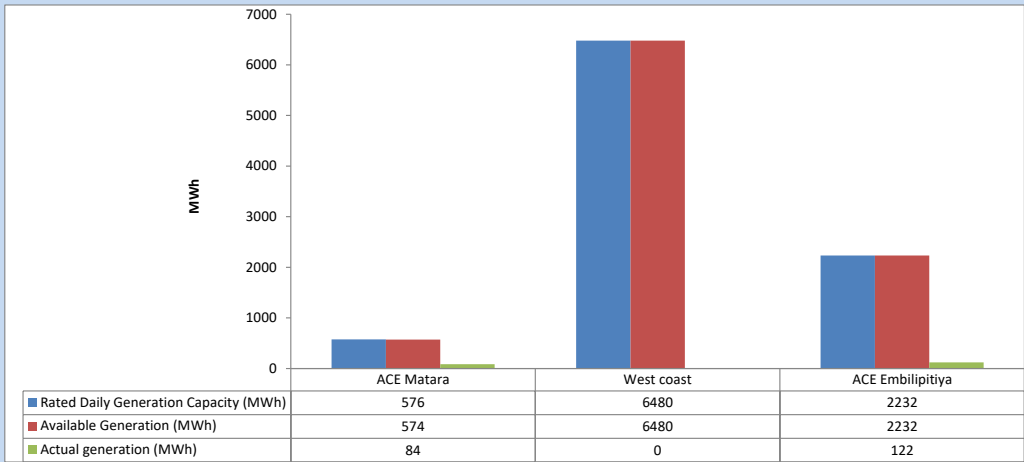


Plant availability is recorded at 6.00 am on

October 28, 2023

5. IPP owned Thermal Plant Dispatch

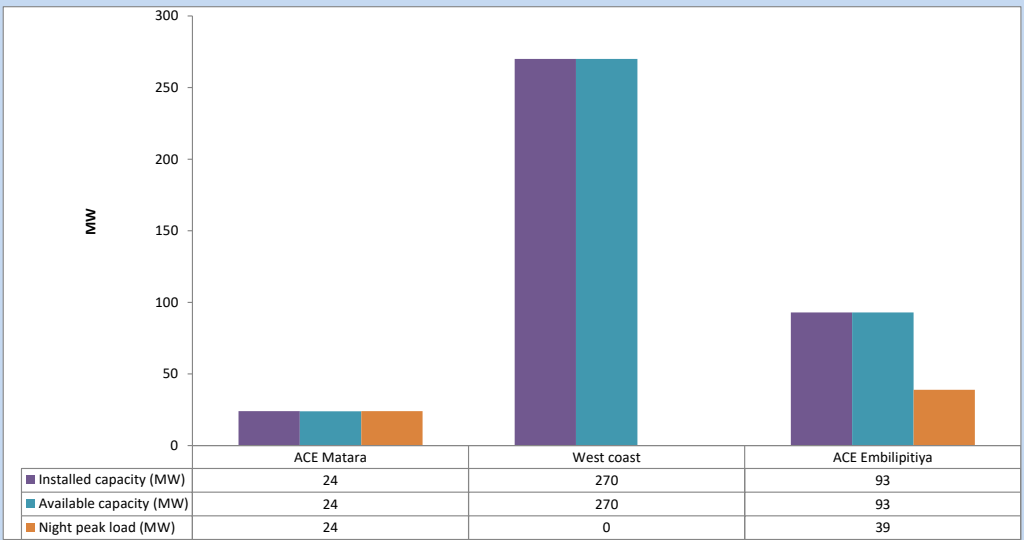
October 27, 2023



Available Generation is estimated based on plant availability at 6.00am on

October 28, 2023

6. IPP owned Thermal Plant Loading at the Night Peak

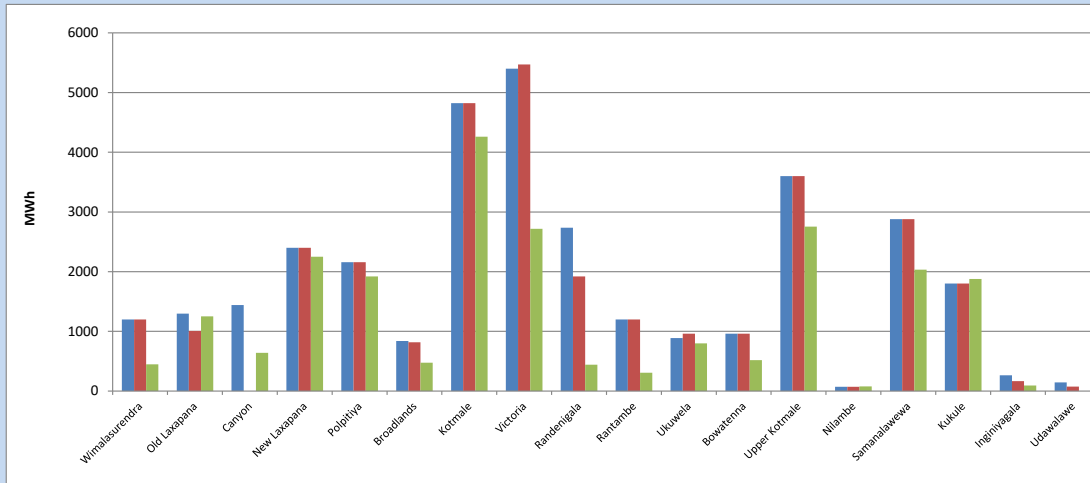


Plant availability is recorded at 6.00 am on

October 28, 2023

7. Major Hydro Plant Dispatch

October 27, 2023

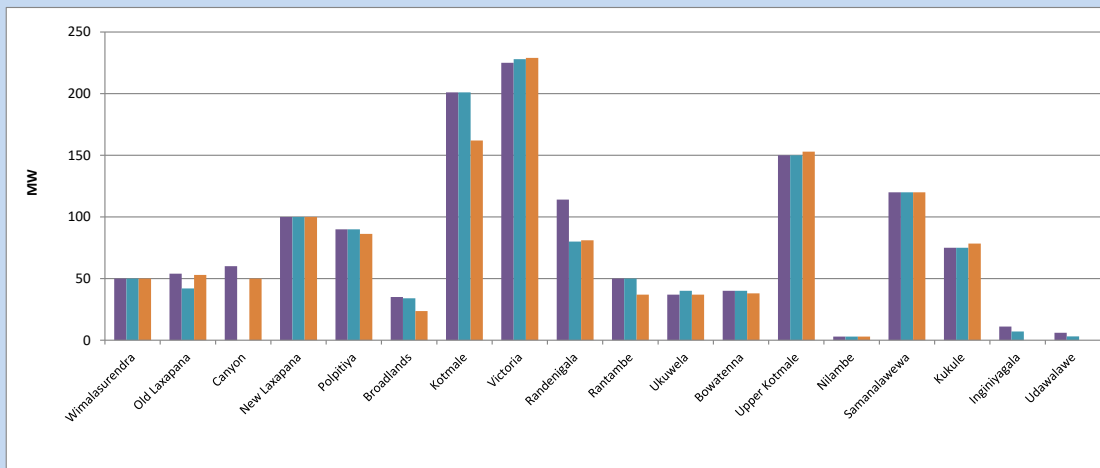


Available Generation is estimated based on plant availability at 6.00am on October 28, 2023
Broadlands power plant is operating in the Commissioning Stage

October 28, 2023

8. Major Hydro Plant Loading at Night Peak

October 27, 2023



Plant availability is recorded at 6.00 am on October 28, 2023
Broadlands power plant is operating in the Commissioning Stage

October 28, 2023

9. Summary of Major Plant performance

Table 05

Plant	Installed Capacity	Plant Availability	Night peak Load	Plant Dispatch
	(MW)	(MW)	(MW)	(MWh)
Wimalasurendra	50	50	50	448
Old Laxapana Canyon	54	42	53	1,252
New Laxapana	60	0	50	640
Polpitiya	100	100	100	2,249
Broadlands	90	90	86	1,920
Kotmale	35	34	24	475
Victoria	201	201	162	4,260
Randenigala	225	228	229	2,719
Rantambe	114	80	81	441
Ukuwela	50	50	37	306
Bowatenna	37	40	37	799
Upper Kotmale	40	40	38	518
Nilambe	150	150	153	2,753
Samanalawewa	3	3	3	78
Kukule	120	120	120	2,034
Inginiyagala	75	75	78	1,876
Udawalawe	11	7	0	93
Puttalam Coal I	6	3	0	0
Puttalam Coal II	270	270	270	5,514
Puttalam Coal III	270	270	269	5,580
KPS Small GTs	270	0	0	0
KPS GT 7	64	16	0	0
KCCP	115	115	0	0
Sapugaskanda A	161	153	0	0
Sapugaskanda B	70	50	0	0
Uthura Janani	70	63	0	0
Barge CEB	26	16	16	63
CEB-Hambantota	60	60	58	310
CEB-Mathugama	30	20	0	0
ACE Matara	20	13	0	0
Asia Power	24	24	24	84
KCCPS -2	50	0	0	0
West Coast	163	155	0	0
Nothern Power	270	270	0	0
ACE Embilipitiya	36	0	0	0
Total	93	93	39	122
	3,483	2,900	2,047	37,384

Plant availability is the availability recorded at 6 am on

October 28, 2023

10. Contribution to the Night Peak in MW

October 27, 2023

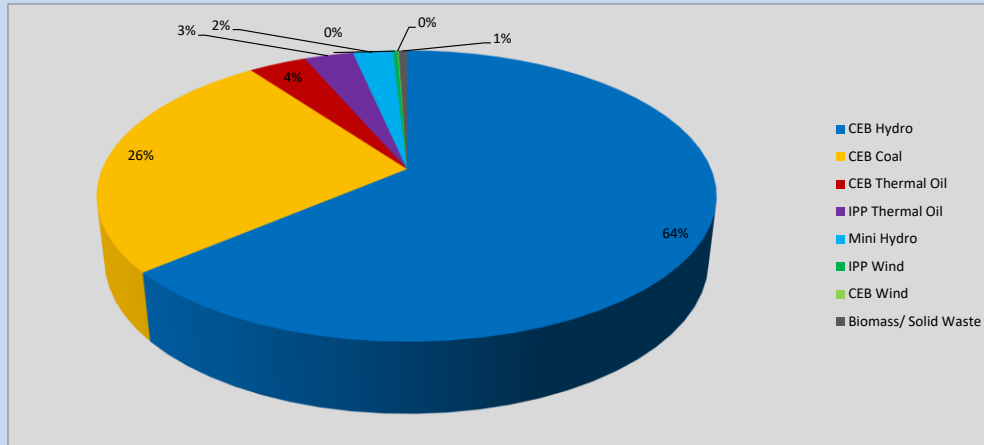


Table 06

CEB Hydro	1313	MW
CEB Coal	539	MW
CEB Thermal Oil	74	MW
IPP Thermal Oil	63	MW
Mini Hydro (Telemetered)	51	MW
IPP Wind	6.2	MW
CEB Wind	1.1	MW
Biomass/ Solid Waste	11	MW

Recorded Peak Demand Data

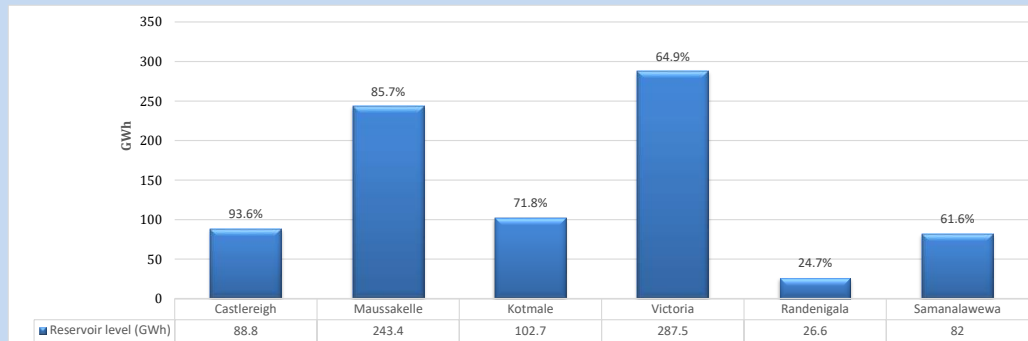
Table 07

Night Peak*	2,059	MW
Day Peak Maximum Demand	1,845	MW
Day Peak Minimum Demand	1,502	MW
Off Peak Minimum Demand	1,133	MW

Above figures are excluding contribution from roof top solar, non telemetered solar and mini hydro plants

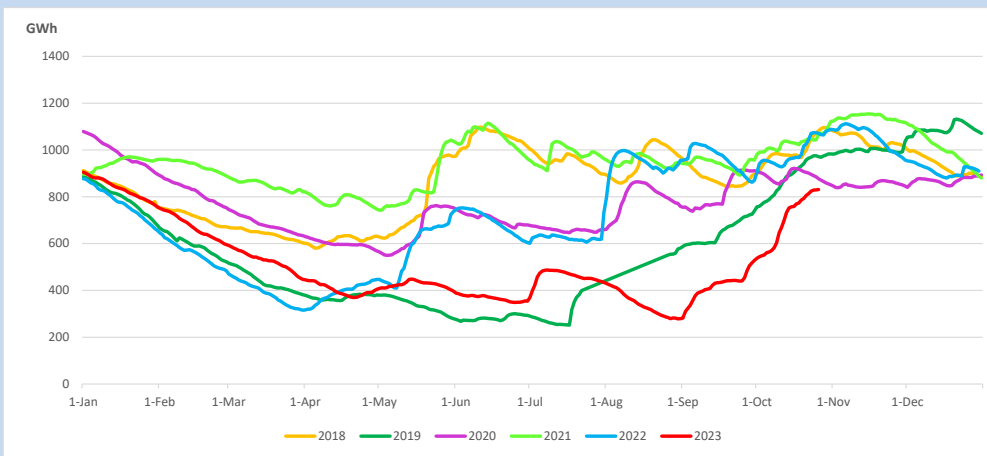
Reservoir Levels -

as at 06.00 Hr on October 28, 2023

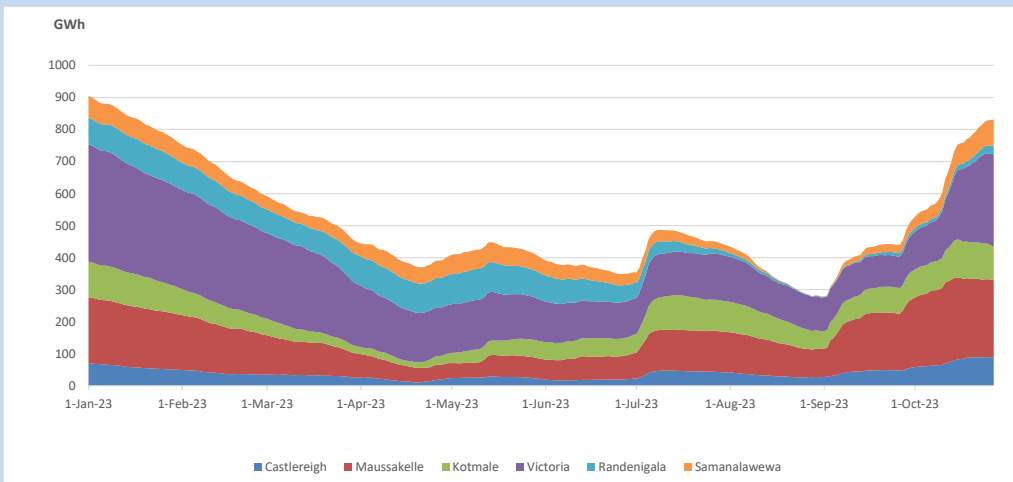


Total Reservoir Level 831 GWh
 % of Total capacity 68.9%

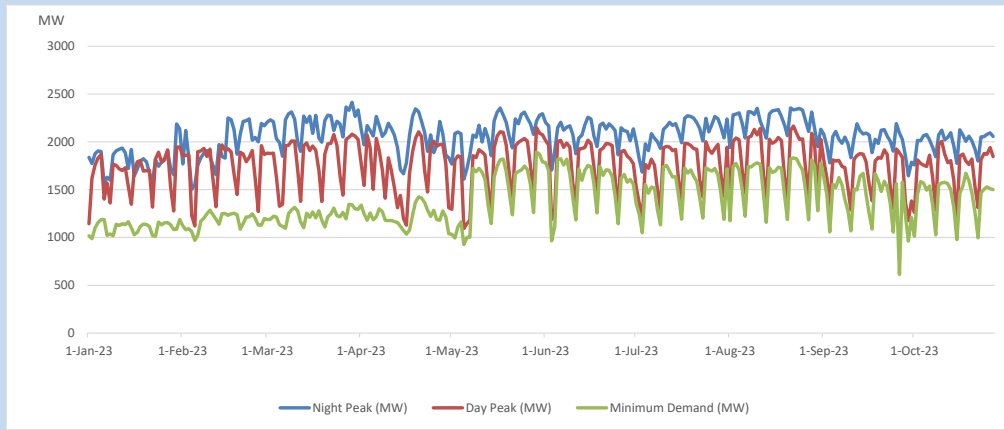
11. Comparison of Total Reservoir Storage Levels with Past Years



12. Variation of Major Hydro Reservoir Levels in the current year (GWh)



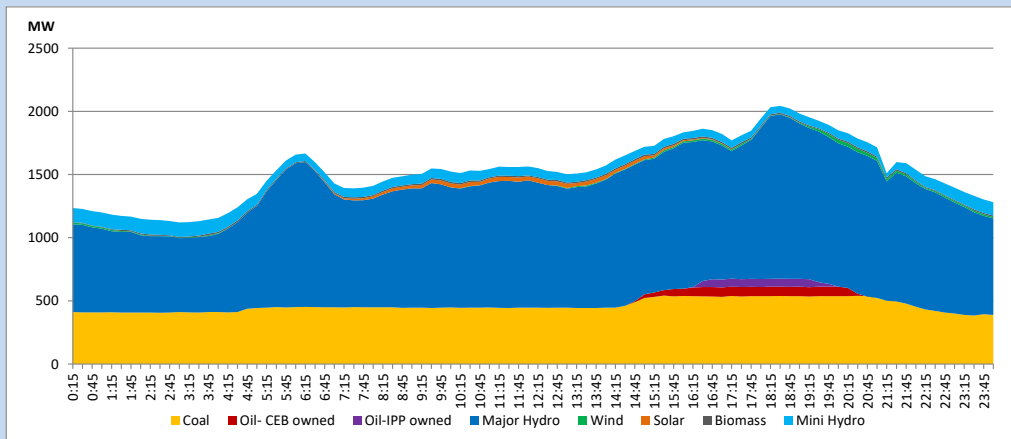
13. Variation of Demand during the current year



The above figures are excluding contribution from roof top solar, non telemetered solar and mini hydro plants

14. Daily Load Curve

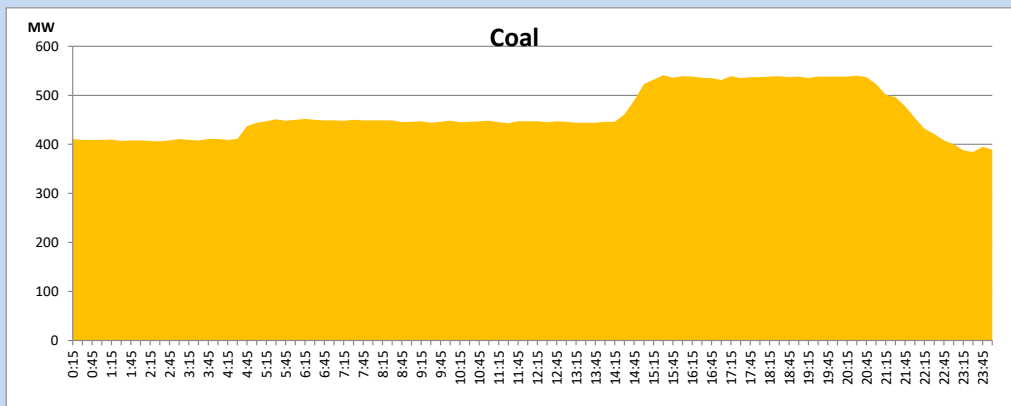
October 27, 2023



Solar and wind data is based on Telemetered Power Stations only

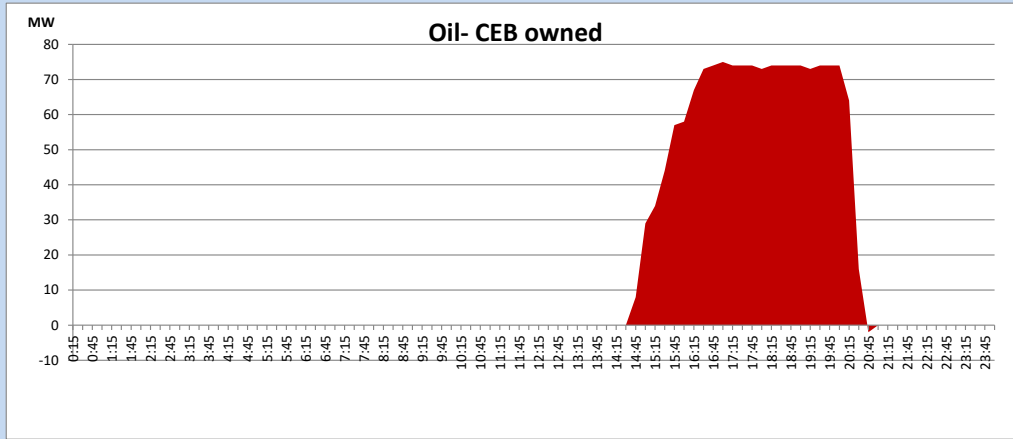
Coal Generation during

October 27, 2023



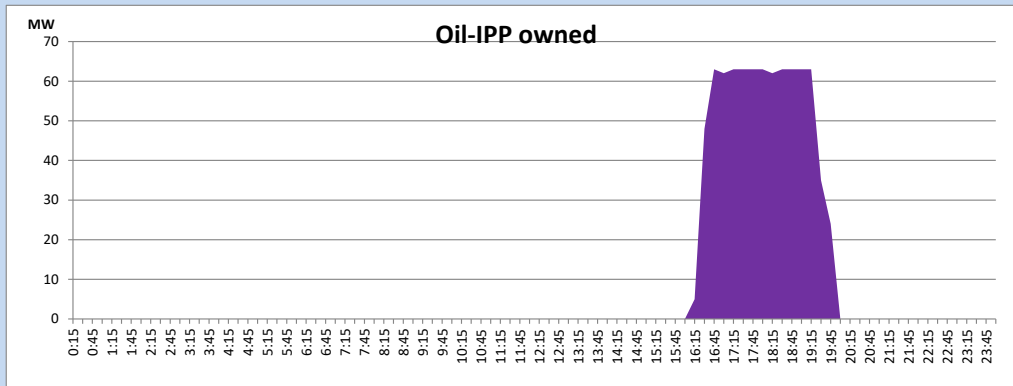
CEB Oil Plant Generation during

October 27, 2023



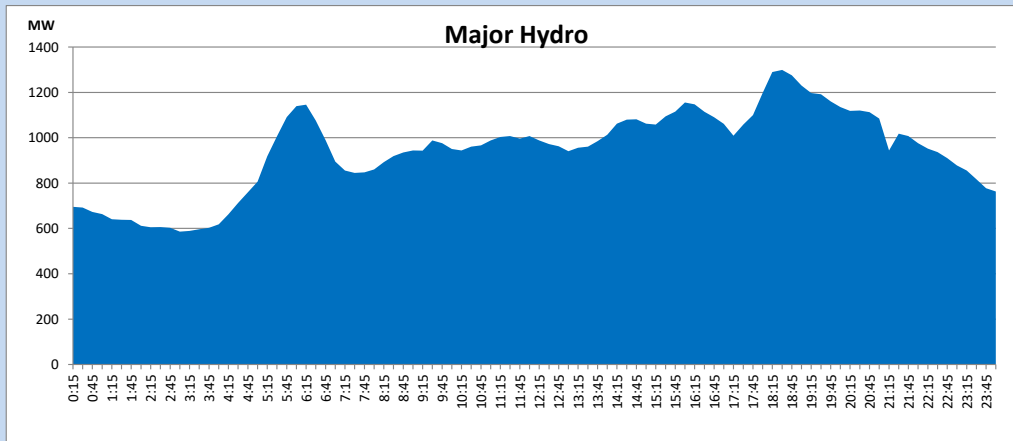
IPP Oil Plant Generation during

October 27, 2023



Major Hydro Generation during

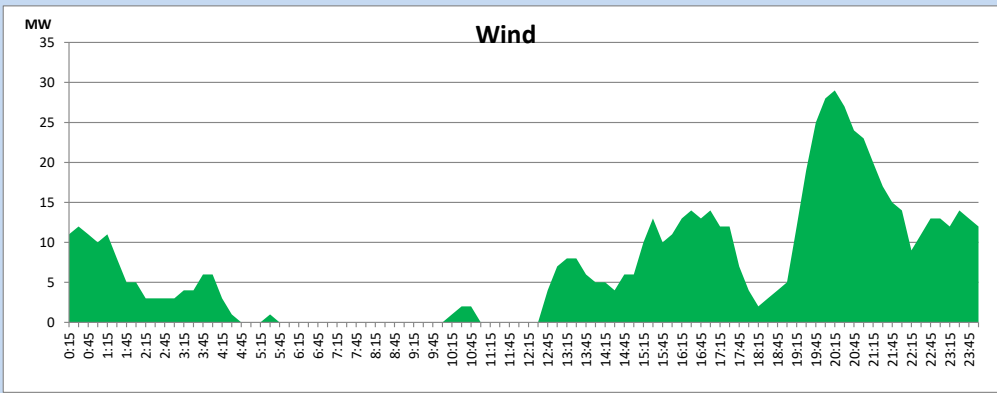
October 27, 2023



Wind Generation during

October 27, 2023

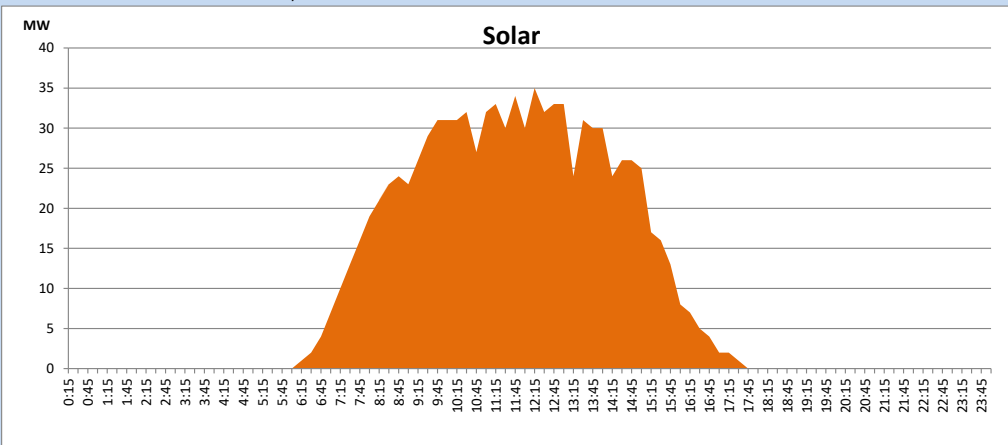
Based on Telemetered Power Stations only



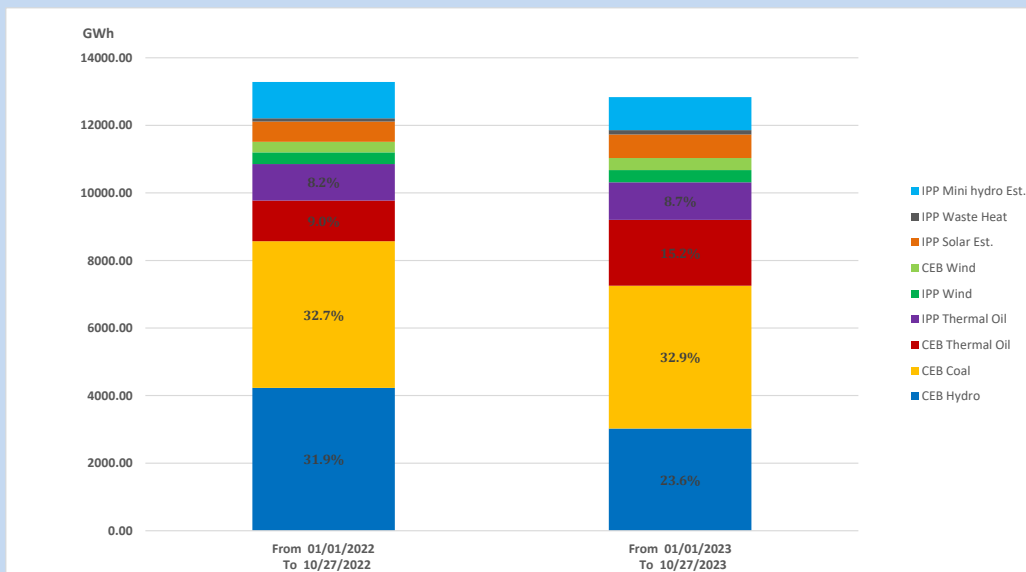
Solar Generation during

October 27, 2023

Based on Telemetered Power Stations only



15. Cumulative Dispatch Comparison with Last Year



Cumulative dispatch
 From 01/01/2022 To 10/27/2022
 From 01/01/2023 To 10/27/2023

13285 GWh
 12834 GWh

The above figures are including contribution from roof top solar, non telemetered solar and mini hydro plants (figures have been adjusted based on the data from the CEB monthly review reports.)

Thermal Plant Fuel types

Table 08

Power Station	Primary Fuel
CEB Thermal	
Sapugaskanda 1	Heavy Fuel
Sapugaskanda 2	Heavy Fuel
Kelanitissa Small Gas Turbines	Auto Diesel
GT 7 - Kelanitissa	Auto Diesel
Kelanitissa CCY	Naphtha or Diesel
Lakvijaya 1	Coal
Lakvijaya 2	Coal
Lakvijaya 3	Coal
Uthuru Janani	Heavy Fuel
Barge CEB	Heavy Fuel
KCCPS -2	Auto Diesel

Power Station	Primary Fuel
Private Thermal	
West Coast	Auto Diesel / Heavy Fuel
ACE Matara	Heavy Fuel
ACE Embilipitiya	Heavy Fuel

Major Incidents reported during the day

October 27, 2023

- 1) Kukule pond spilling started at 19:15hrs and stopped at 2:20hrs(28/10/2023)
- 2) Balangoda – N' Laxapana 132kV both ccts tripped only from Balangoda end at 21:04hrs, due to operation of Distance protection, causing Ambalangoda, Balangoda, Beliatta, Deniyaya, Embilipitiya, Hambanthota, Matara, N' Galle, Ratnapura, and Wewelwaththa GSSs to be dead. At the same time, S'wewa both units tripped rejecting 120MW from the system, and Canyon – N'Laxapana cct tripped, due to operation of Distance protection, causing Canyon both units to be tripped and 50MW of generation rejected from the system. All affected GSSs were restored at 21:34hrs. S'wewa unit 01 and 02 resumed generation at 21:37hrs and 21:31hrs, respectively. Canyon both units and N'Laxapana – Canyon cct is yet to be restored.
- 3) Ambalangoda 132/33kV T/F 01 tripped from both sides along with 33kV B/C at 23:42hrs due to the operation of O/C & E/F, causing 33kV B/S 01 and associated feeders to be dead. Ambalangoda 132/33kV T/F 01, 33kV B/S 01 and all the affected feeders are yet to be normalized.