

Generation and Reservoirs Statistics

October 26, 2023



PUBLIC UTILITIES COMMISSION OF SRI LANKA

1. Daily Generation Mix in MWh

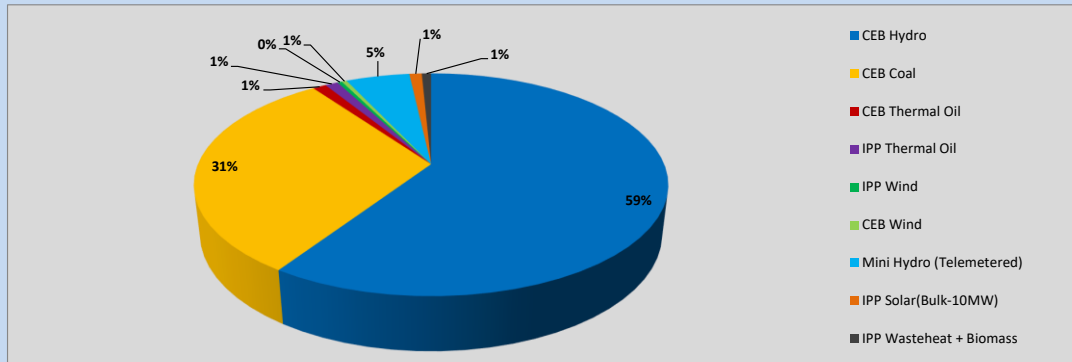


Table 01

	Generation (MWh)
CEB Hydro	22,355
CEB Coal	11,598
CEB Thermal Oil	412
IPP Thermal Oil	396
IPP Wind	142
CEB Wind	154
Mini Hydro (Telemetered)	1,959
IPP Solar (Bulk)	382
IPP Waste heat + Biomass	285
Total Generation (Excluding estimated figures)	37,683
* Estimated unserved energy	0
* Estimated Mini Hydro (Non telemetered)	2901
* Estimated IPP Solar PV (Bulk 1-10MW)	304
* Estimated Solar Roof Top PV	1930
Total Generation (Including estimated figures)	42,818

* Estimated figures of CEB generation report

Table 02

	Installed Capacity (MW)
CEB Hydro	1409
CEB Coal	810
CEB Thermal Oil	781
IPP Thermal Oil (West Coast, ACE Matara and ACE Embilipitiya)	387
IPP Wind	148
CEB Wind	100
Mini Hydro	416
IPP Waste heat + Biomass	50
IPP Solar	130
Rooftop Solar* (Ordinary)	267
Rooftop Solar* (LT Bulk)	256
Rooftop Solar* (HT Bulk)	61

Data Source - Monthly Review Report [May-2023]

2. Cumulative Dispatch

Following data excludes the contribution from roof top solar, non telemetered solar and mini hydro plants

Table 03 - Current Month

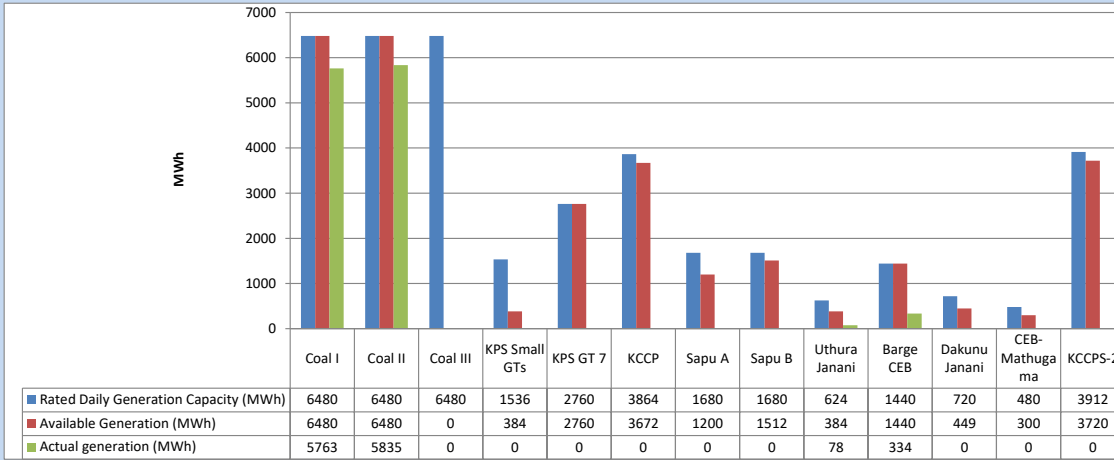
Category	Dispatch (GWh)	
CEB Hydro	449	47.76%
CEB Coal	304	32.32%
CEB Thermal Oil	59	6.27%
IPP Thermal	19	1.98%
SPP Wind	21	2.19%
CEB Wind	23	2.47%
Mini Hydro (Telemetered)	50	5.33%
IPP Solar(Bulk-10MW)	7	0.74%
IPP Waste heat + BMP	7	0.74%
Total	940	

Table 04 - Current Year

Category	Dispatch (GWh)	
CEB Hydro	3,014	26.20%
CEB Coal	4,223	36.71%
CEB Thermal Oil	1,953	16.97%
IPP Thermal	1,113	9.68%
SPP Wind	346	3.01%
CEB Wind	355	3.09%
Mini Hydro (Telemetered)	302	2.62%
IPP Solar(Bulk-10MW)	89	0.78%
IPP Waste heat	106	0.92%
Total	11,504	

3. CEB owned Thermal Plant Dispatch

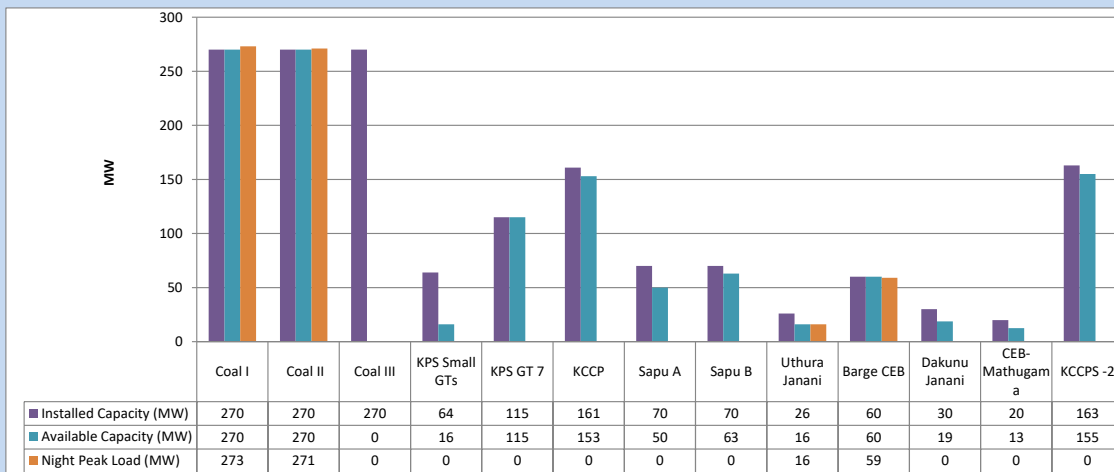
October 26, 2023



Available Generation is estimated based on plant availability at 6.00am on

October 27, 2023

4. CEB owned Thermal Plant Loading at the Night Peak

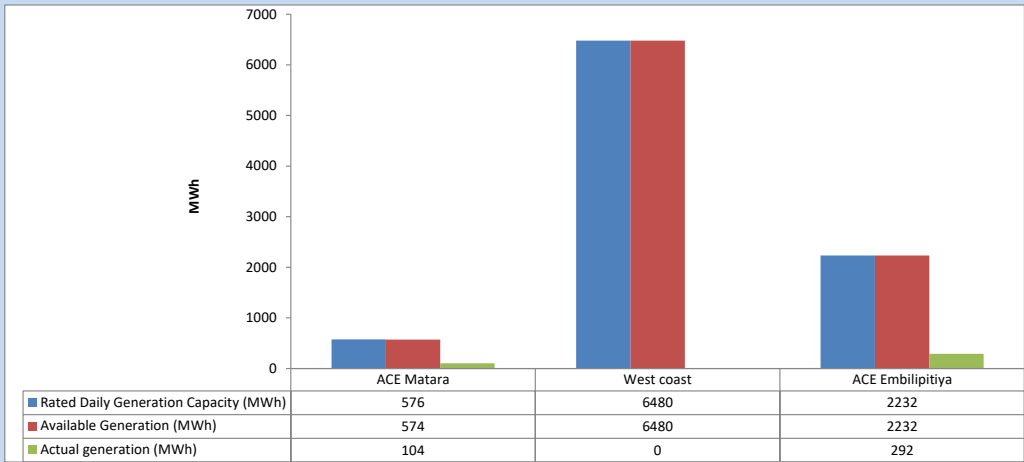


Plant availability is recorded at 6.00 am on

October 27, 2023

5. IPP owned Thermal Plant Dispatch

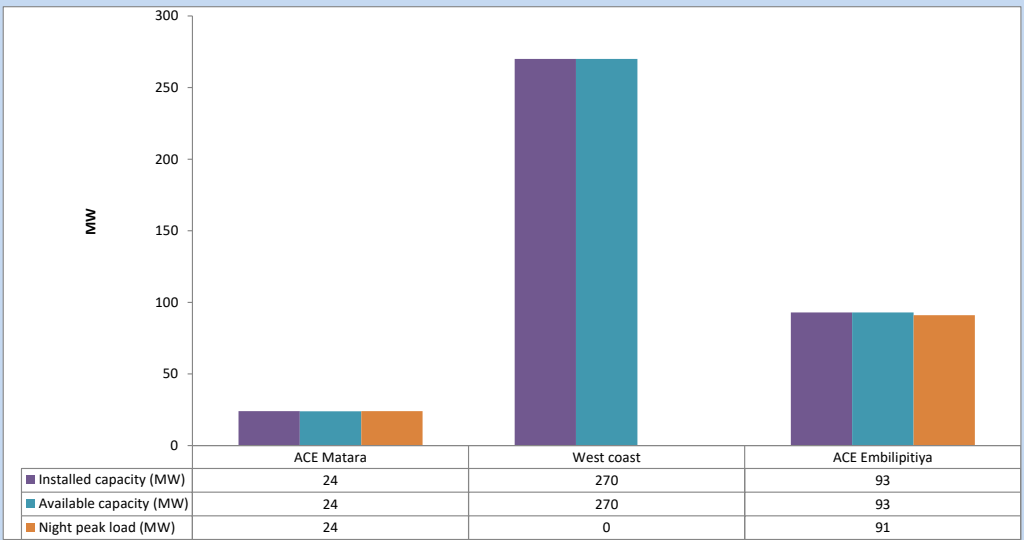
October 26, 2023



Available Generation is estimated based on plant availability at 6.00am on

October 27, 2023

6. IPP owned Thermal Plant Loading at the Night Peak

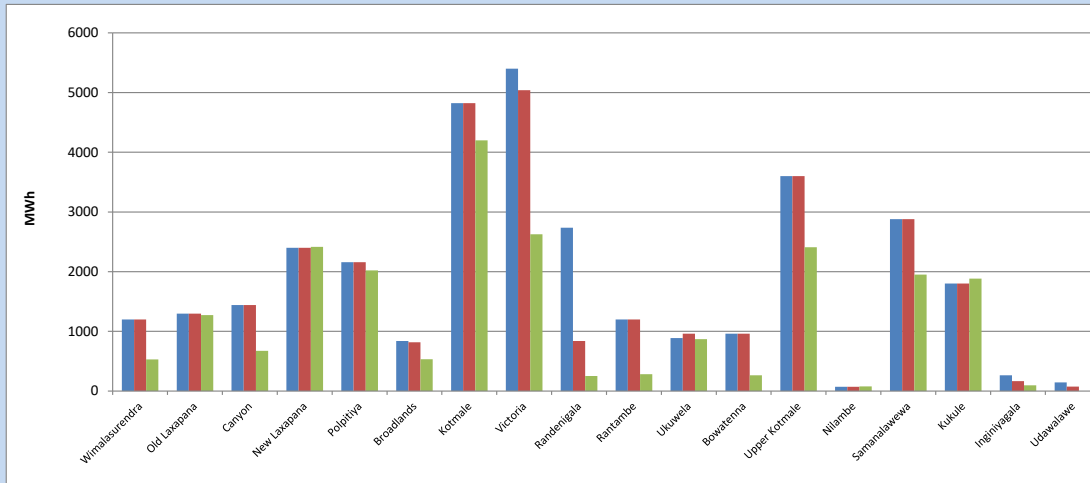


Plant availability is recorded at 6.00 am on

October 27, 2023

7. Major Hydro Plant Dispatch

October 26, 2023

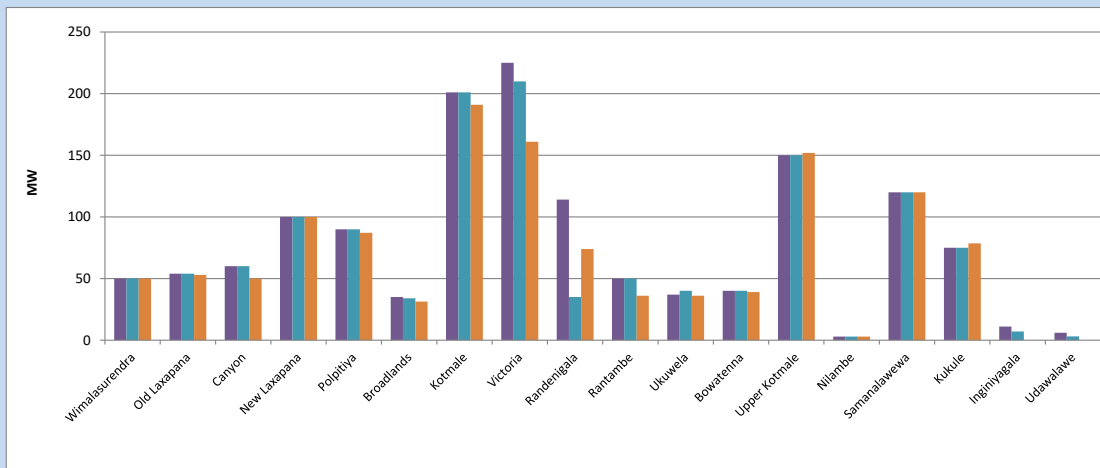


Available Generation is estimated based on plant availability at 6.00am on October 27, 2023
Broadlands power plant is operating in the Commissioning Stage

October 27, 2023

8. Major Hydro Plant Loading at Night Peak

October 26, 2023



Plant availability is recorded at 6.00 am on October 27, 2023
Broadlands power plant is operating in the Commissioning Stage

October 27, 2023

9. Summary of Major Plant performance

Table 05

Plant	Installed Capacity	Plant Availability	Night peak Load	Plant Dispatch
	(MW)	(MW)	(MW)	(MWh)
Wimalasurendra	50	50	50	529
Old Laxapana Canyon	54	54	53	1,274
New Laxapana	60	60	50	675
Polpitiya	100	100	100	2,415
Broadlands	90	90	87	2,020
Kotmale	35	34	31	532
Kotmale	201	201	191	4,200
Victoria	225	210	161	2,626
Randenigala	114	35	74	251
Rantambe	50	50	36	282
Ukuwela	37	40	36	870
Bowatenna	40	40	39	264
Upper Kotmale	150	150	152	2,408
Nilambe	3	3	3	79
Samanalawewa	120	120	120	1,950
Kukule	75	75	79	1,885
Inginiyagala	11	7	0	95
Udawalawe	6	3	0	0
Puttalam Coal I	270	270	273	5,763
Puttalam Coal II	270	270	271	5,835
Puttalam Coal III	270	0	0	0
KPS Small GTs	64	16	0	0
KPS GT 7	115	115	0	0
KCCP	161	153	0	0
Sapugaskanda A	70	50	0	0
Sapugaskanda B	70	63	0	0
Uthura Janani	26	16	16	78
Barge CEB	60	60	59	334
CEB-Hambantota	30	19	0	0
CEB-Mathugama	20	13	0	0
ACE Matara	24	24	24	104
Asia Power	50	0	0	0
KCCPS -2	163	155	0	0
West Coast	270	270	0	0
Nothern Power	36	0	0	0
ACE Embilipitiya	93	93	91	292
Total	3,483	2,908	2,080	37,683

Plant availability is the availability recorded at 6 am on

October 27, 2023

10. Contribution to the Night Peak in MW

October 26, 2023

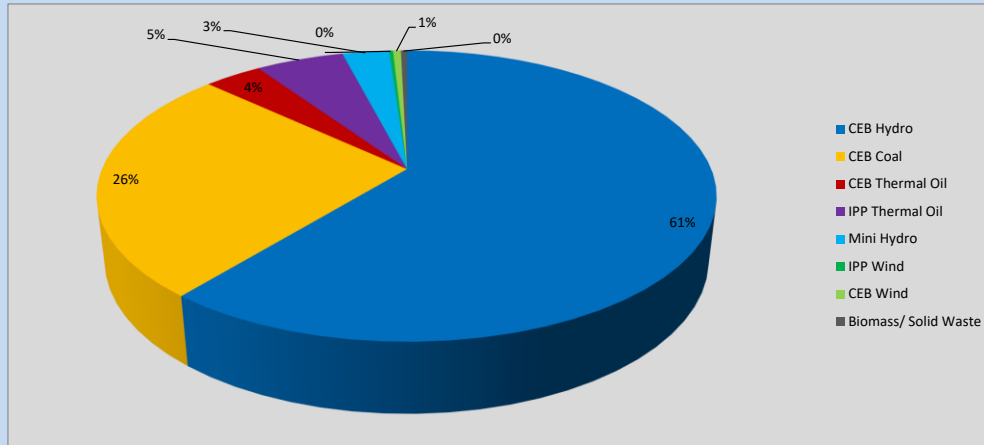


Table 06

CEB Hydro	1276	MW
CEB Coal	544	MW
CEB Thermal Oil	75	MW
IPP Thermal Oil	115	MW
Mini Hydro (Telemetered)	61	MW
IPP Wind	5.1	MW
CEB Wind	10.3	MW
Biomass/ Solid Waste	8	MW

Recorded Peak Demand Data

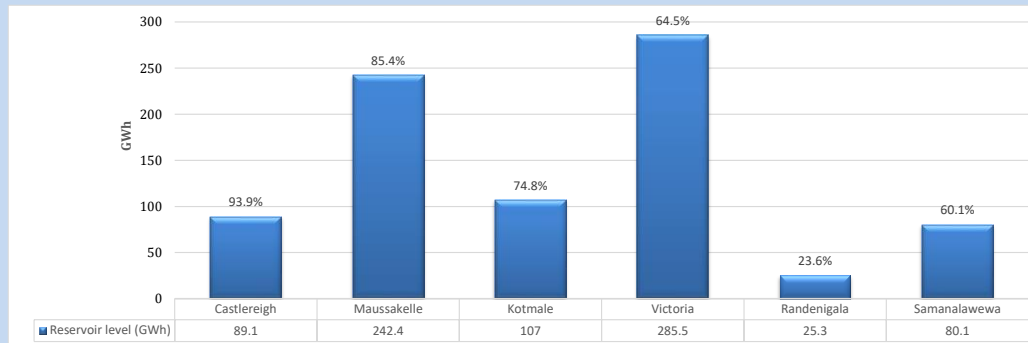
Table 07

Night Peak*	2,094	MW
Day Peak Maximum Demand	1,941	MW
Day Peak Minimum Demand	1,510	MW
Off Peak Minimum Demand	1,129	MW

Above figures are excluding contribution from roof top solar, non telemetered solar and mini hydro plants

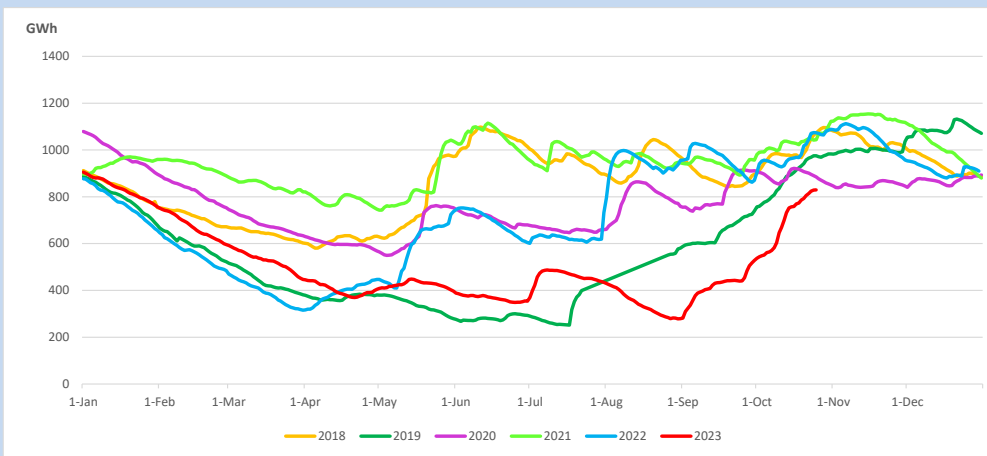
Reservoir Levels -

as at 06.00 Hr on October 27, 2023

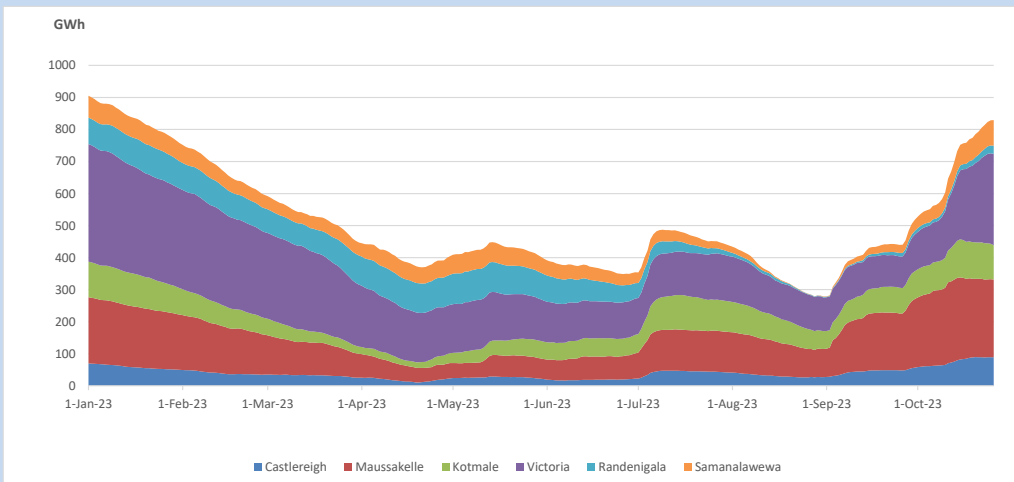


Total Reservoir Level 829.4 GWh
 % of Total capacity 68.8%

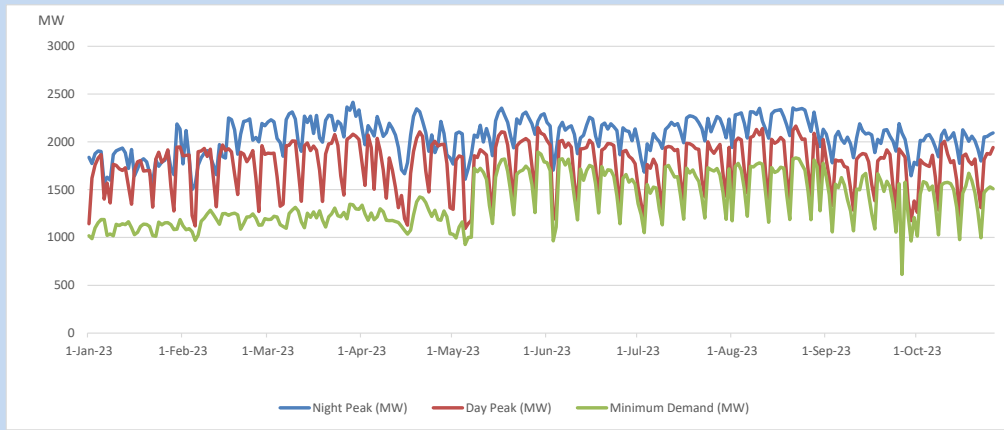
11. Comparison of Total Reservoir Storage Levels with Past Years



12. Variation of Major Hydro Reservoir Levels in the current year (GWh)



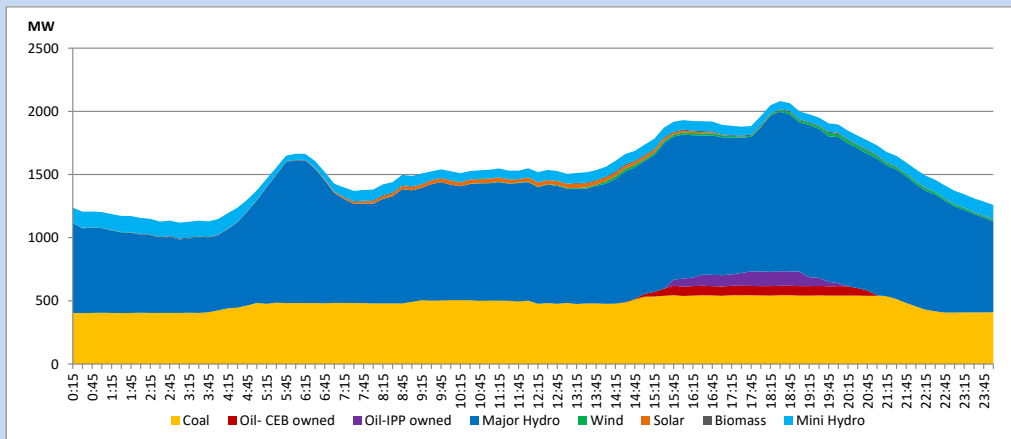
13. Variation of Demand during the current year



The above figures are excluding contribution from roof top solar, non telemetered solar and mini hydro plants

14. Daily Load Curve

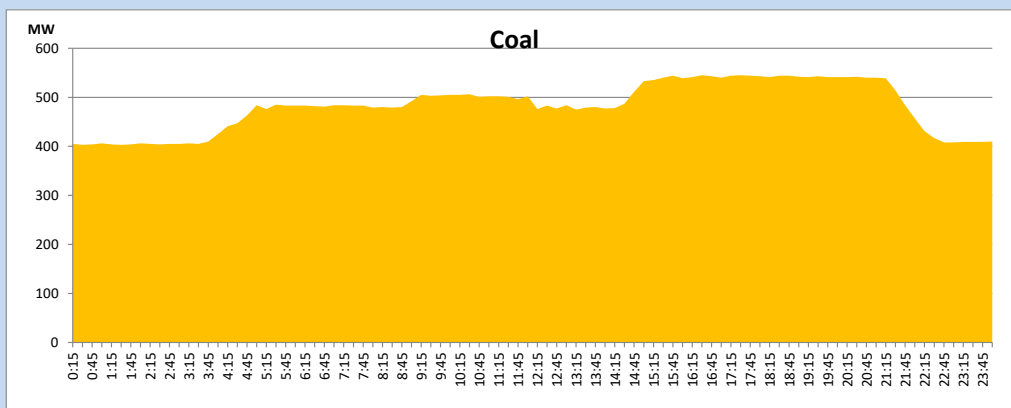
October 26, 2023



Solar and wind data is based on Telemetered Power Stations only

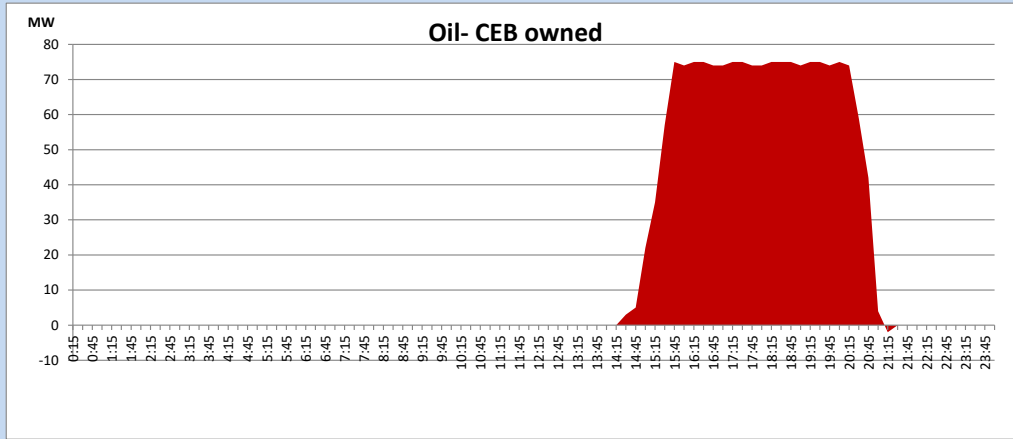
Coal Generation during

October 26, 2023



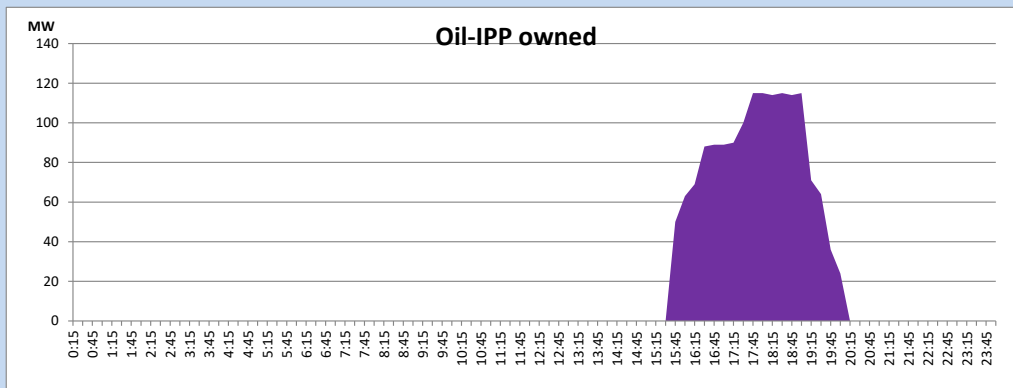
CEB Oil Plant Generation during

October 26, 2023



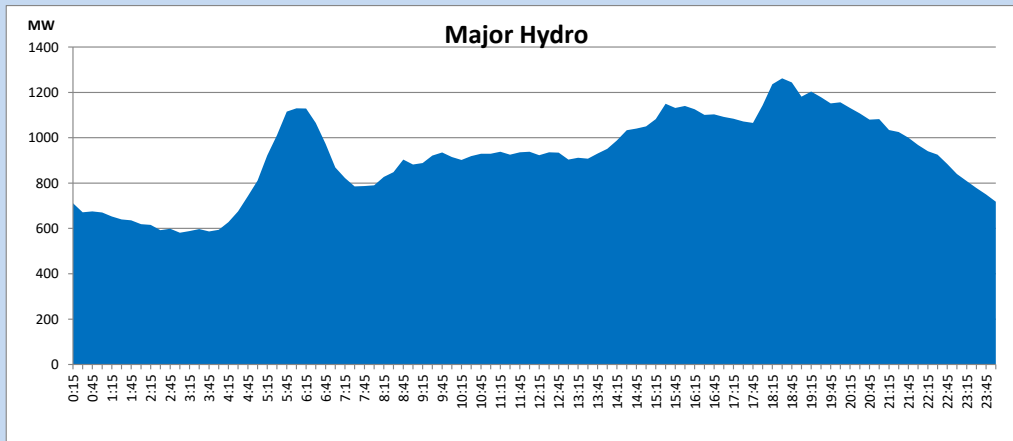
IPP Oil Plant Generation during

October 26, 2023



Major Hydro Generation during

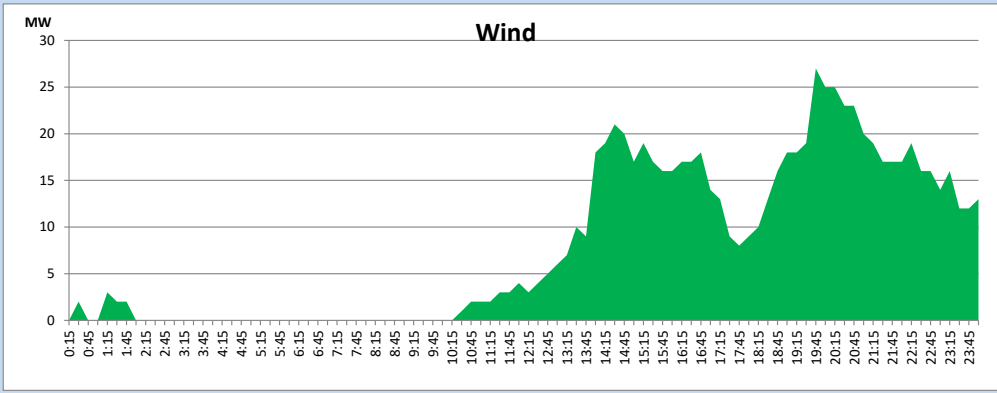
October 26, 2023



Wind Generation during

October 26, 2023

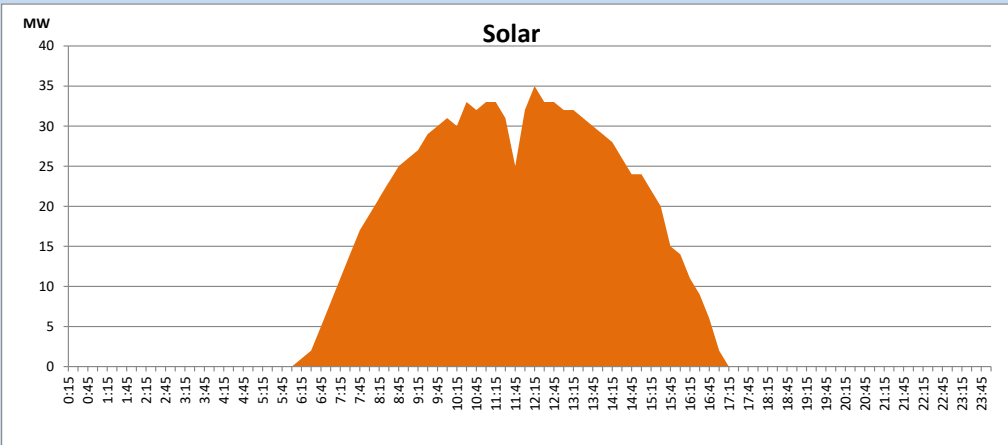
Based on Telemetered Power Stations only



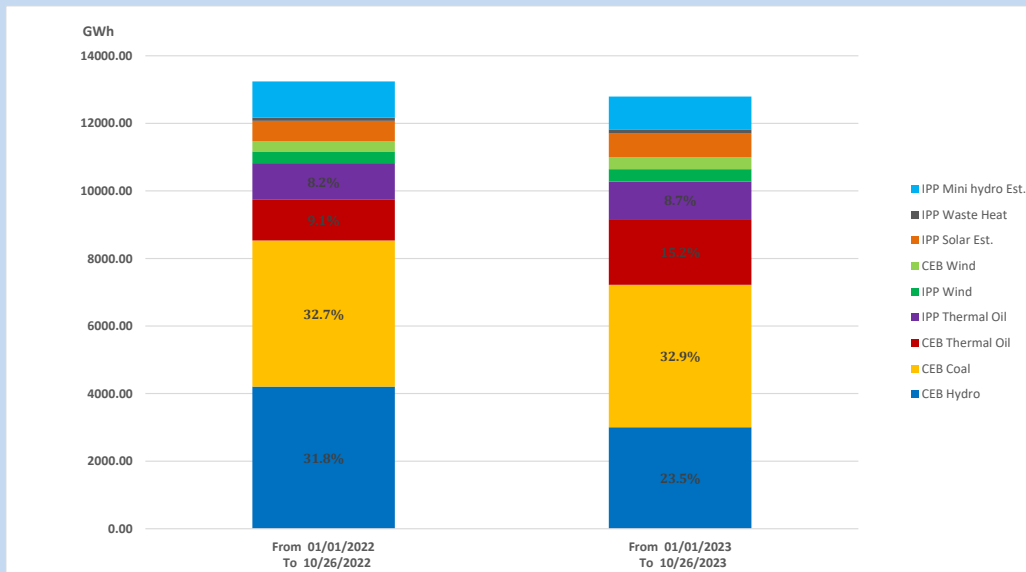
Solar Generation during

October 26, 2023

Based on Telemetered Power Stations only



15. Cumulative Dispatch Comparison with Last Year



Cumulative dispatch

From 01/01/2022 To 10/26/2022

13242 GWh

From 01/01/2023 To 10/26/2023

12792 GWh

The above figures are including contribution from roof top solar, non telemetered solar and mini hydro plants (figures have been adjusted based on the data from the CEB monthly review reports.)

Thermal Plant Fuel types

Table 08

Power Station	Primary Fuel
CEB Thermal	
Sapugaskanda 1	Heavy Fuel
Sapugaskanda 2	Heavy Fuel
Kelanitissa Small Gas Turbines	Auto Diesel
GT 7 - Kelanitissa	Auto Diesel
Kelanitissa CCY	Naphtha or Diesel
Lakvijaya 1	Coal
Lakvijaya 2	Coal
Lakvijaya 3	Coal
Uthuru Janani	Heavy Fuel
Barge CEB	Heavy Fuel
KCCPS -2	Auto Diesel

Power Station	Primary Fuel
Private Thermal	
West Coast	Auto Diesel / Heavy Fuel
ACE Matara	Heavy Fuel
ACE Embilipitiya	Heavy Fuel

Major Incidents reported during the day

October 26, 2023

- 1) Lakvijaya - New Chilaw 220 kV cct 02 tripped at 12:02hrs due to the operation of distance protection. The cct was normalized at 12:21hrs
- 2) Kolonnawa – Sub I (Maradana) 132kV cable, which tripped on 24.04.2023, was loaded at 22:22hrs.
- 3) Kukule pond, spilling started at 17:55hrs and stopped at 00:45hrs (27.10.2023)