

Generation and Reservoirs Statistics

September 26, 2023



PUBLIC UTILITIES COMMISSION OF SRI LANKA

1. Daily Generation Mix in MWh

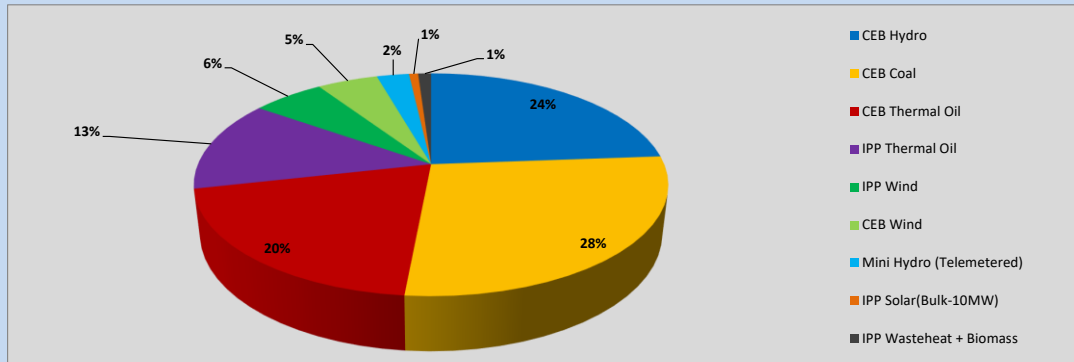


Table 01

	Generation (MWh)
CEB Hydro	9,739
CEB Coal	11,309
CEB Thermal Oil	8,177
IPP Thermal Oil	5,427
IPP Wind	2,395
CEB Wind	2,020
Mini Hydro (Telemetered)	1,076
IPP Solar (Bulk)	305
IPP Waste heat + Biomass	431
Total Generation (Excluding estimated figures)	40,879
* Estimated unserved energy	0
* Estimated Mini Hydro (Non telemetered)	2564
* Estimated IPP Solar PV (Bulk 1-10MW)	304
* Estimated Solar Roof Top PV	1660
Total Generation (Including estimated figures)	45,407

* Estimated figures of CEB generation report

Table 02

	Installed Capacity (MW)
CEB Hydro	1409
CEB Coal	810
CEB Thermal Oil	781
IPP Thermal Oil (West Coast, ACE Matara and ACE Embilipitiya)	387
IPP Wind	148
CEB Wind	100
Mini Hydro	416
IPP Waste heat + Biomass	50
IPP Solar	130
Rooftop Solar* (Ordinary)	267
Rooftop Solar* (LT Bulk)	256
Rooftop Solar* (HT Bulk)	61

Data Source - Monthly Review Report [May-2023]

2. Cumulative Dispatch

Following data excludes the contribution from roof top solar, non telemetered solar and mini hydro plants

Table 03 - Current Month

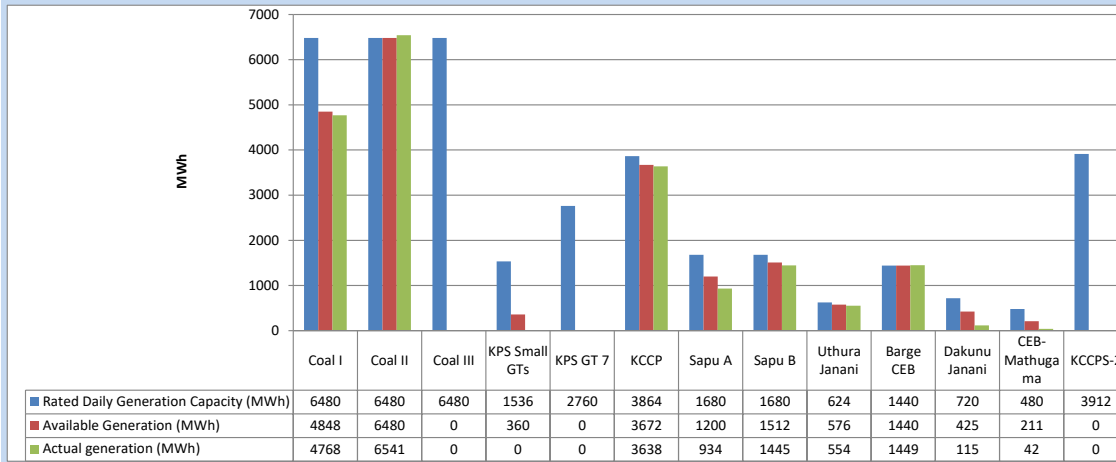
Category	Dispatch (GWh)	
CEB Hydro	225	23.21%
CEB Coal	294	30.34%
CEB Thermal Oil	190	19.62%
IPP Thermal	99	10.19%
SPP Wind	55	5.69%
CEB Wind	54	5.58%
Mini Hydro (Telemetered)	35	3.56%
IPP Solar(Bulk-10MW)	7	0.75%
IPP Waste heat + BMP	10	1.06%
Total	969	

Table 04 - Current Year

Category	Dispatch (GWh)	
CEB Hydro	2,524	24.20%
CEB Coal	3,879	37.19%
CEB Thermal Oil	1,875	17.98%
IPP Thermal	1,089	10.44%
SPP Wind	315	3.02%
CEB Wind	323	3.10%
Mini Hydro (Telemetered)	245	2.35%
IPP Solar(Bulk-10MW)	82	0.78%
IPP Waste heat	98	0.94%
Total	10,430	

3. CEB owned Thermal Plant Dispatch

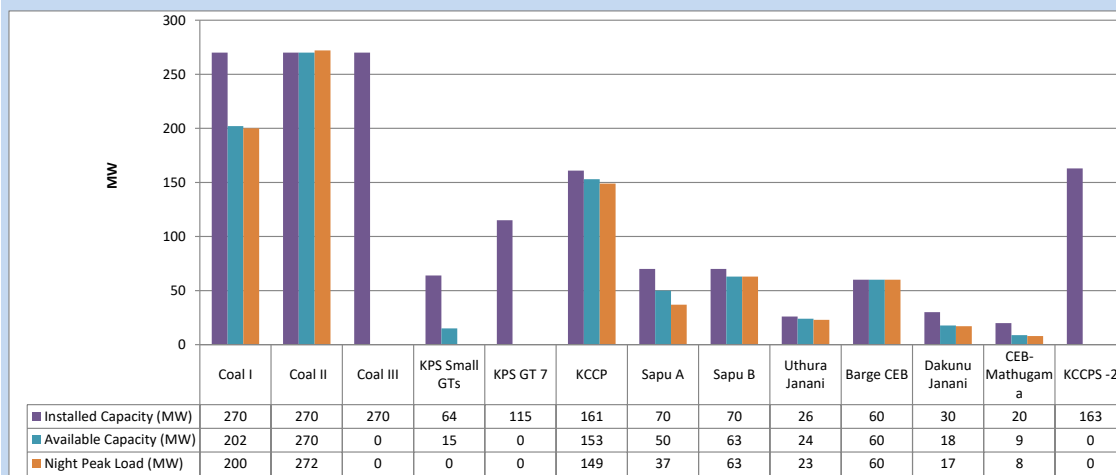
September 26, 2023



Available Generation is estimated based on plant availability at 6.00am on

September 27, 2023

4. CEB owned Thermal Plant Loading at the Night Peak

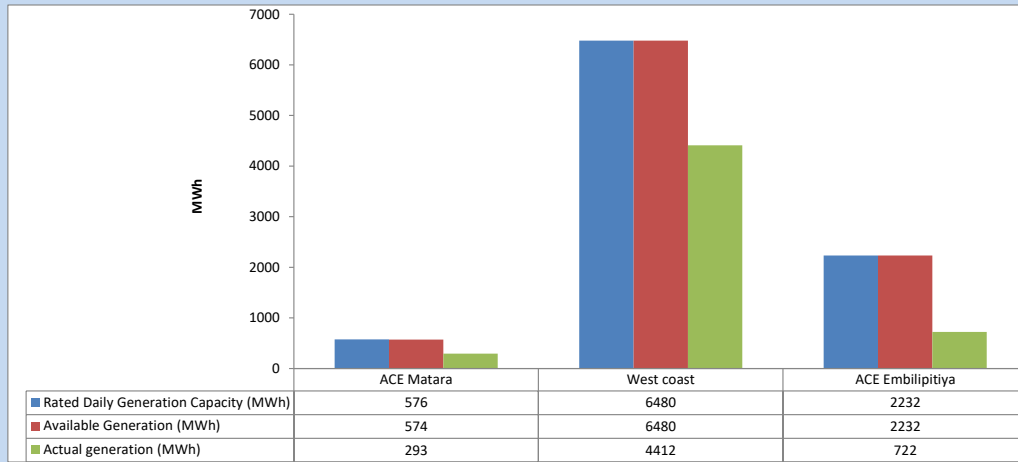


Plant availability is recorded at 6.00 am on

September 27, 2023

5. IPP owned Thermal Plant Dispatch

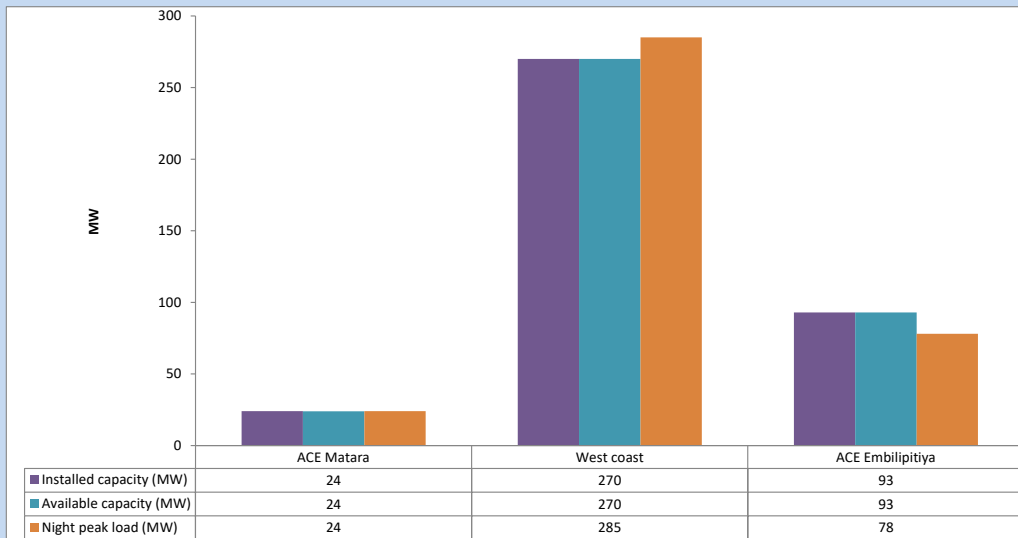
September 26, 2023



Available Generation is estimated based on plant availability at 6.00am on

September 27, 2023

6. IPP owned Thermal Plant Loading at the Night Peak

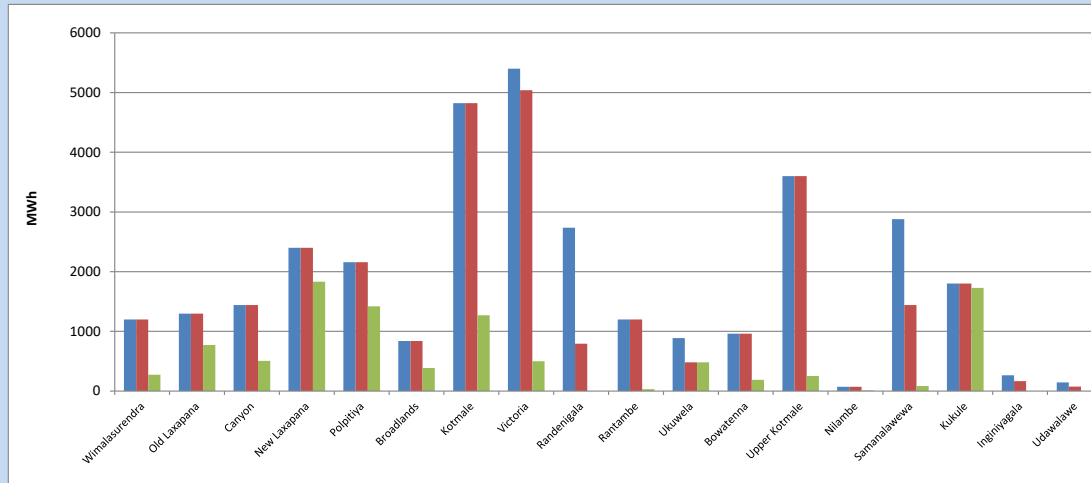


Plant availability is recorded at 6.00 am on

September 27, 2023

7. Major Hydro Plant Dispatch

September 26, 2023

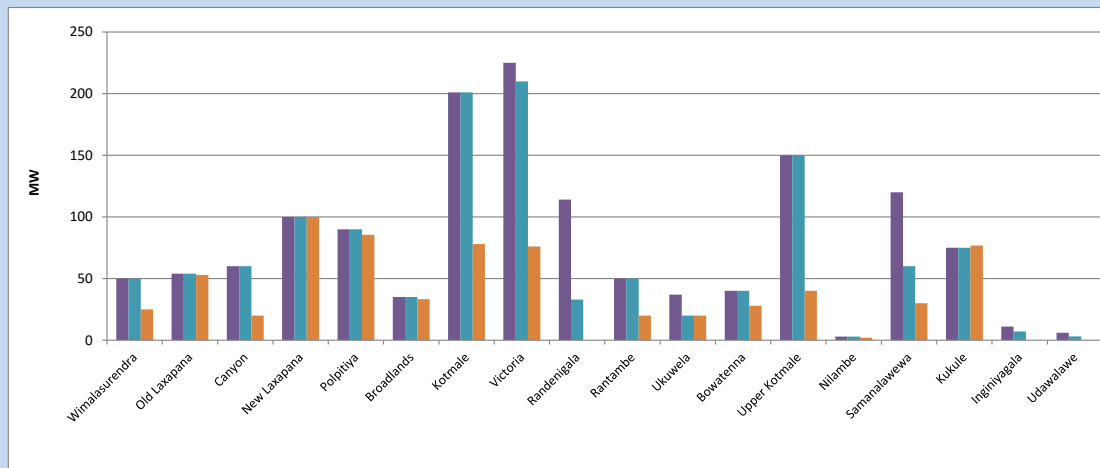


Available Generation is estimated based on plant availability at 6.00am on September 27, 2023
Broadlands power plant is operating in the Commissioning Stage

September 27, 2023

8. Major Hydro Plant Loading at Night Peak

September 26, 2023



Plant availability is recorded at 6.00 am on September 27, 2023
Broadlands power plant is operating in the Commissioning Stage

September 27, 2023

9. Summary of Major Plant performance

Table 05

Plant	Installed Capacity (MW)	Plant Availability (MW)	Night peak Load (MW)	Plant Dispatch (MWh)
Wimalasurendra	50	50	25	274
Old Laxapana	54	54	53	773
Canyon	60	60	20	507
New Laxapana	100	100	100	1,831
Polpitiya	90	90	86	1,420
Broadlands	35	35	33	386
Kotmale	201	201	78	1,270
Victoria	225	210	76	500
Randenigala	114	33	0	0
Rantambe	50	50	20	31
Ukuwela	37	20	20	480
Bowatenna	40	40	28	189
Upper Kotmale	150	150	40	253
Nilambe	3	3	2	11
Samanalawewa	120	60	30	85
Kukule	75	75	77	1,729
Inginiyagala	11	7	0	0
Udawalawe	6	3	0	0
Puttalam Coal I	270	202	200	4,768
Puttalam Coal II	270	270	272	6,541
Puttalam Coal III	270	0	0	0
KPS Small GTs	64	15	0	0
KPS GT 7	115	0	0	0
KCCP	161	153	149	3,638
Sapugaskanda A	70	50	37	934
Sapugaskanda B	70	63	63	1,445
Uthura Janani	26	24	23	554
Barge CEB	60	60	60	1,449
CEB-Hambantota	30	18	17	115
CEB-Mathugama	20	9	8	42
ACE Matara	24	24	24	293
Asia Power	50	0	0	0
KCCPS -2	163	0	0	0
West Coast	270	270	285	4,412
Nothern Power	36	0	0	0
ACE Embilipitiya	93	93	78	722
Total	3,483	2,492	2,112	40,879

Plant availability is the availability recorded at 6 am on

September 27, 2023

10. Contribution to the Night Peak in MW

September 26, 2023

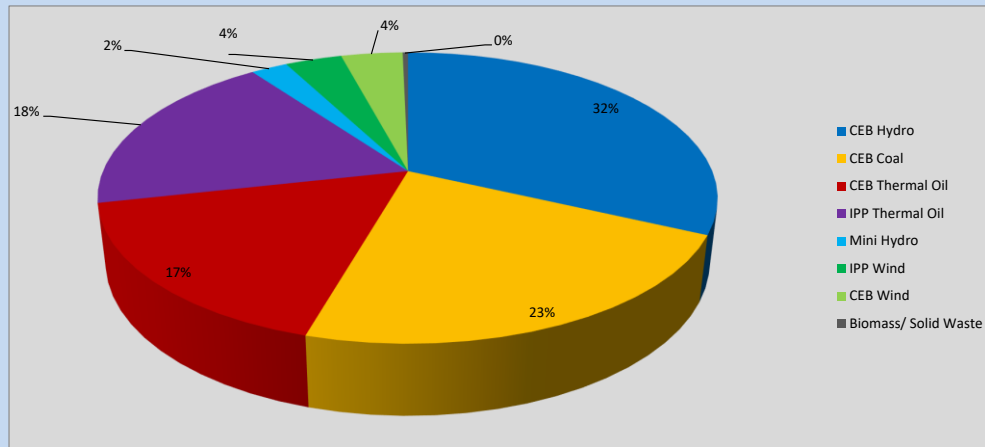


Table 06

CEB Hydro	667	MW
CEB Coal	472	MW
CEB Thermal Oil	357	MW
IPP Thermal Oil	387	MW
Mini Hydro (Telemetered)	48	MW
IPP Wind	74	MW
CEB Wind	80.3	MW
Biomass/ Solid Waste	7	MW

Recorded Peak Demand Data

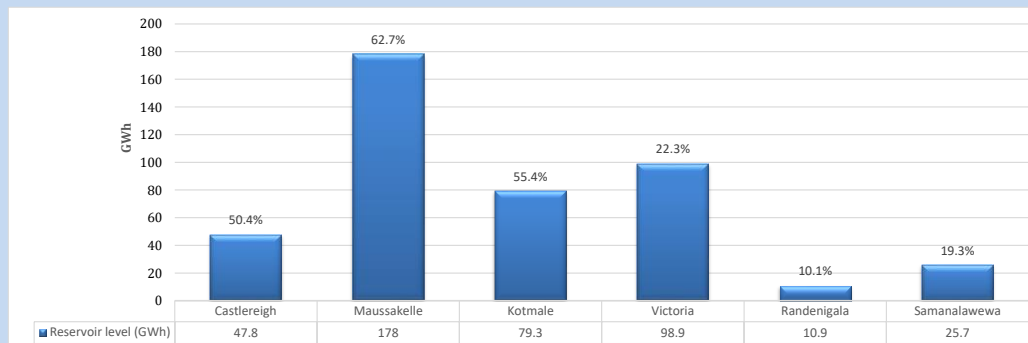
Table 07

Night Peak*	2,092	MW
Day Peak Maximum Demand	1,887	MW
Day Peak Minimum Demand	614	MW
Off Peak Minimum Demand	1,239	MW

Above figures are excluding contribution from roof top solar, non telemetered solar and mini hydro plants

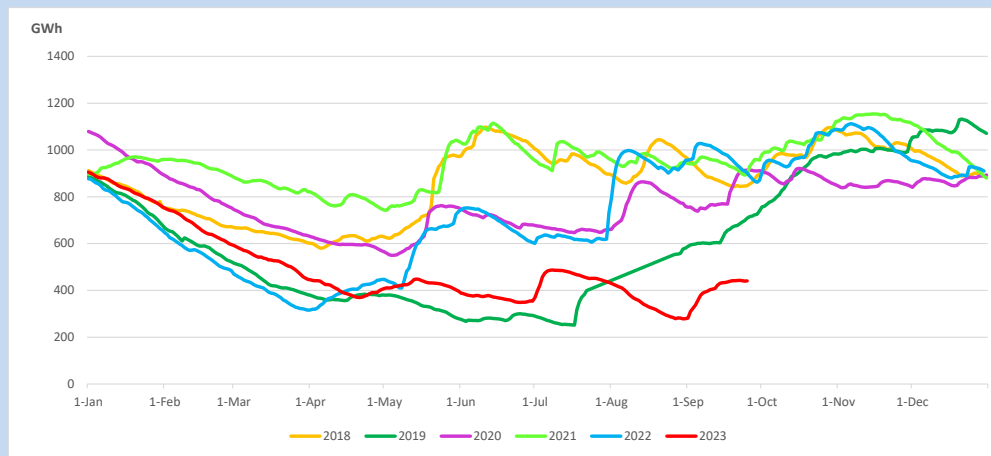
Reservoir Levels -

as at 06.00 Hr on September 27, 2023

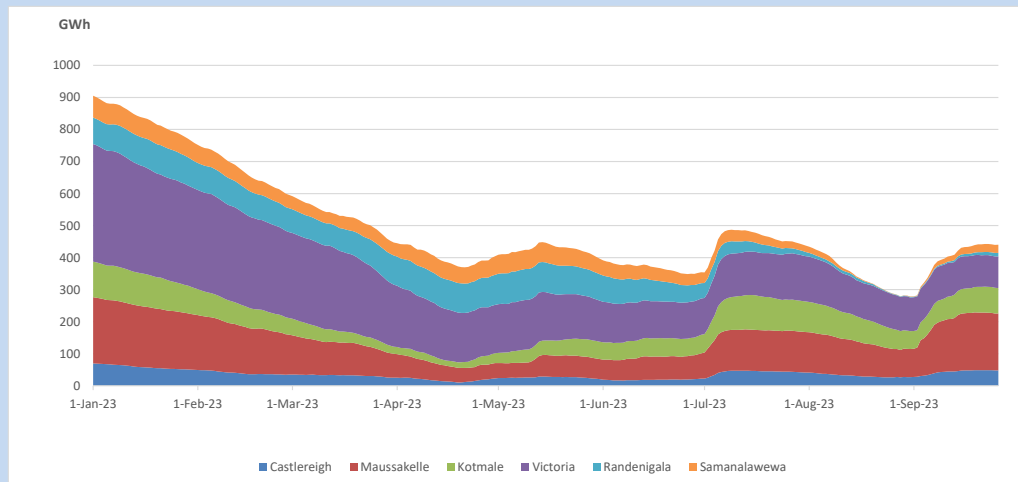


Total Reservoir Level 440.6 GWh
% of Total capacity 36.5%

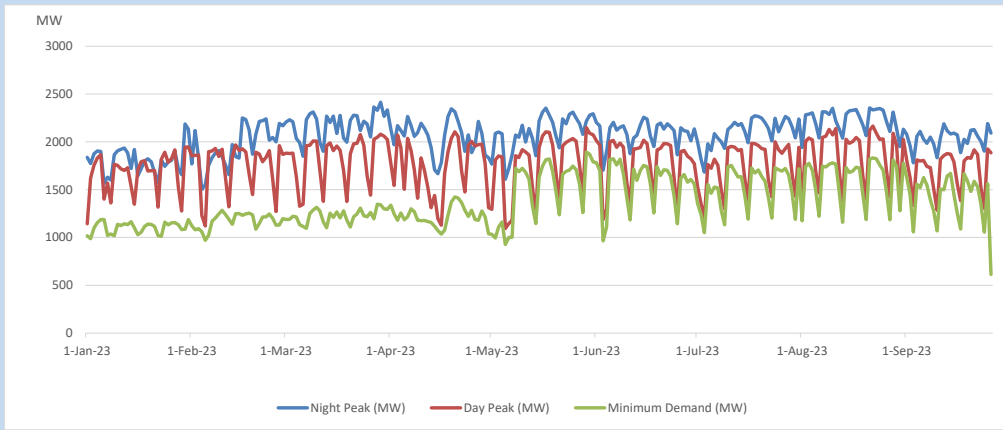
11. Comparison of Total Reservoir Storage Levels with Past Years



12. Variation of Major Hydro Reservoir Levels in the current year (GWh)



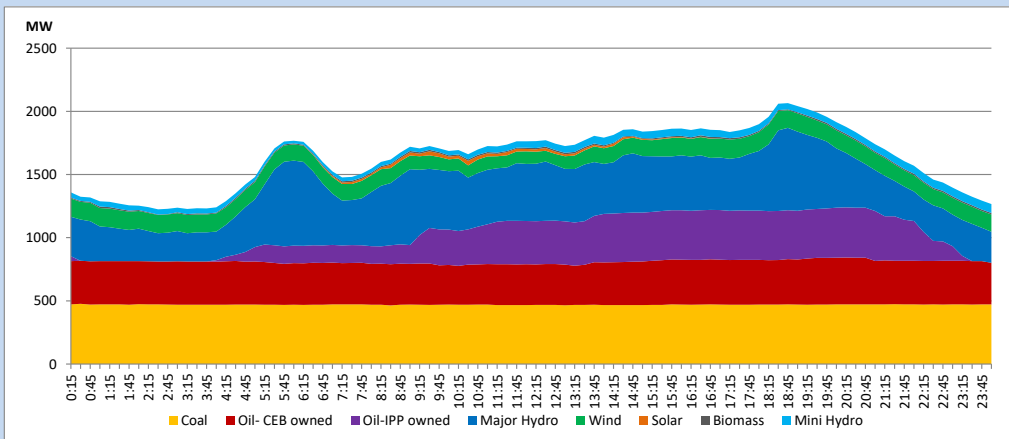
13. Variation of Demand during the current year



The above figures are excluding contribution from roof top solar, non telemetered solar and mini hydro plants

14. Daily Load Curve

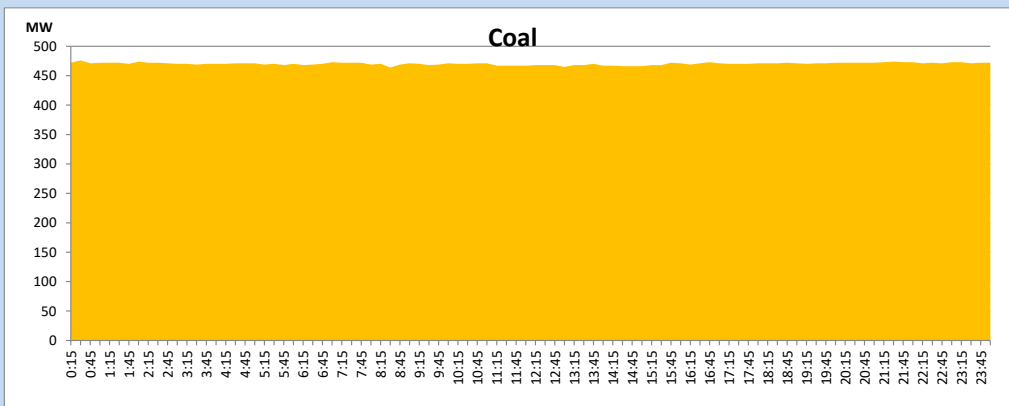
September 26, 2023



Solar and wind data is based on Telemetered Power Stations only

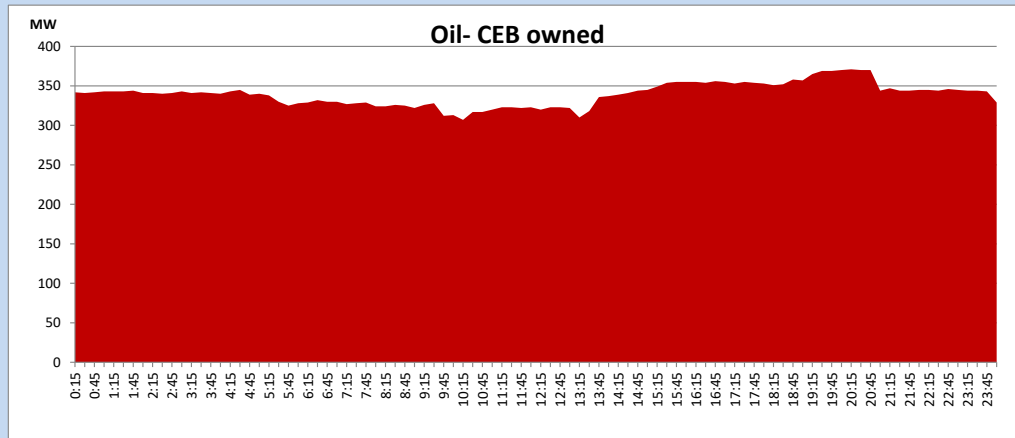
Coal Generation during

September 26, 2023



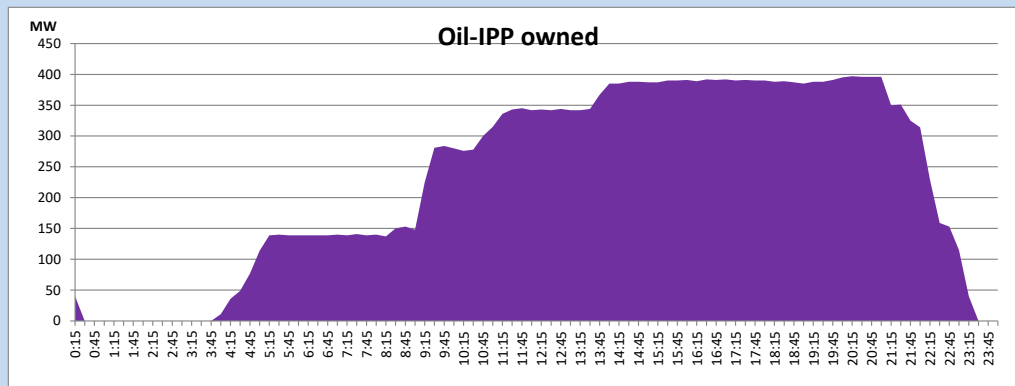
CEB Oil Plant Generation during

September 26, 2023



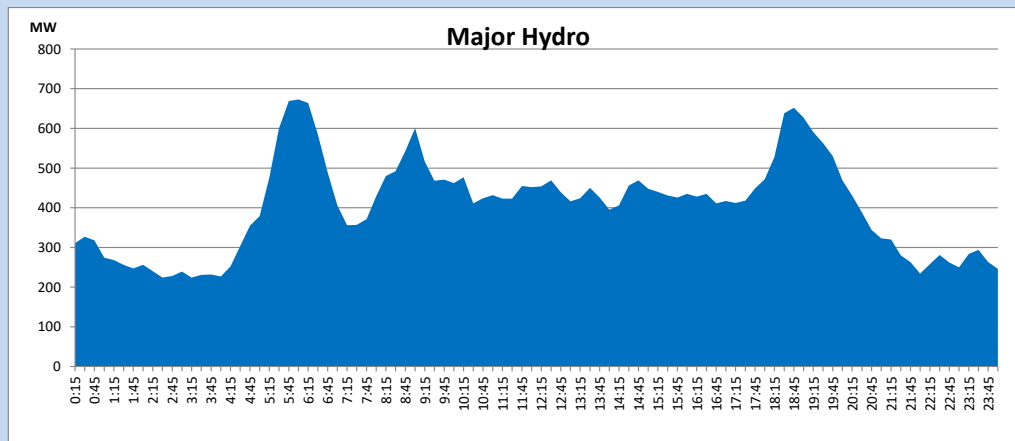
IPP Oil Plant Generation during

September 26, 2023



Major Hydro Generation during

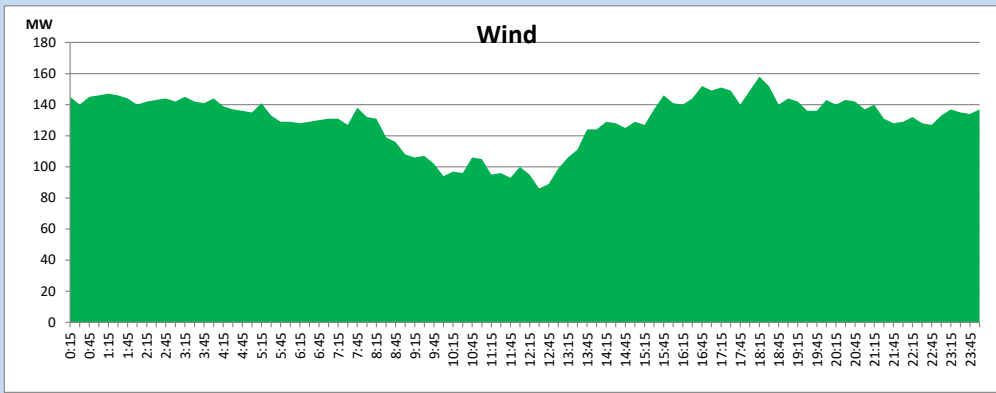
September 26, 2023



Wind Generation during

September 26, 2023

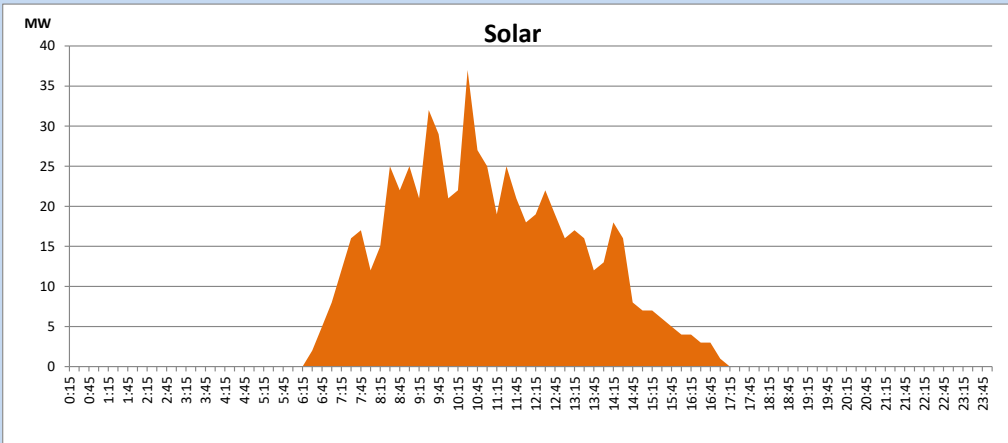
Based on Telemetered Power Stations only



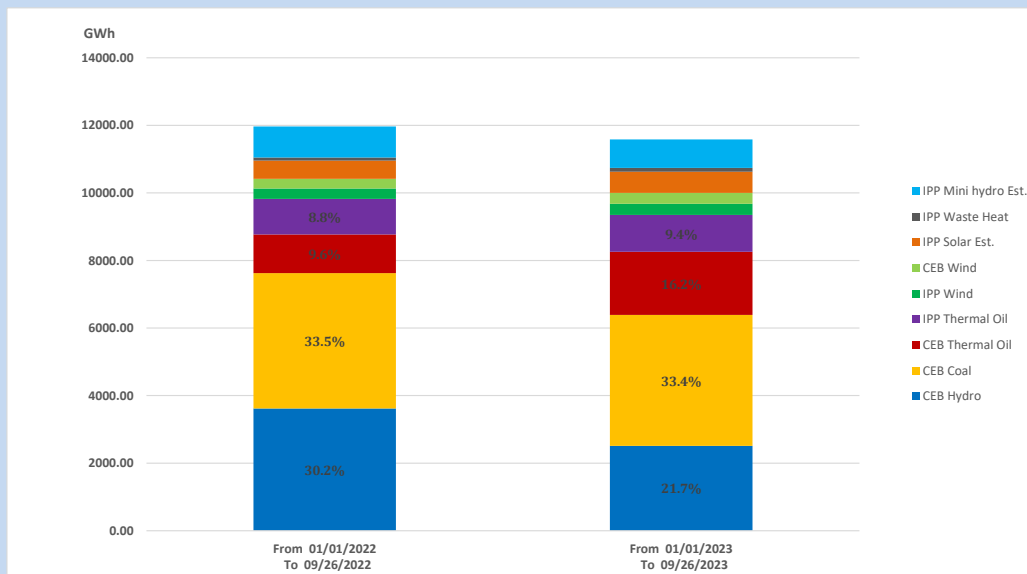
Solar Generation during

September 26, 2023

Based on Telemetered Power Stations only



15. Cumulative Dispatch Comparison with Last Year



Cumulative dispatch
 From 01/01/2022 To 09/26/2022
 From 01/01/2023 To 09/26/2023

11968 GWh
 11582 GWh

The above figures are including contribution from roof top solar, non telemetered solar and mini hydro plants (figures have been adjusted based on the data from the CEB monthly review reports.)

Thermal Plant Fuel types

Table 08

Power Station	Primary Fuel
CEB Thermal	
Sapugaskanda 1	Heavy Fuel
Sapugaskanda 2	Heavy Fuel
Kelanitissa Small Gas Turbines	Auto Diesel
GT 7 - Kelanitissa	Auto Diesel
Kelanitissa CCY	Naphtha or Diesel
Lakvijaya 1	Coal
Lakvijaya 2	Coal
Lakvijaya 3	Coal
Uthuru Janani	Heavy Fuel
Barge CEB	Heavy Fuel
KCCPS -2	Auto Diesel

Power Station	Primary Fuel
Private Thermal	
West Coast	Auto Diesel / Heavy Fuel
ACE Matara	Heavy Fuel
ACE Embilipitiya	Heavy Fuel

Major Incidents reported during the day

September 26, 2023

- 1) Kukule – Matugama 132kV cct 2 tripped from Kukule end and tripped and A/R from Matugama end at 17:04hrs due to the operation of distance protection. The cct was restored at 17:14hrs.
- 2) Kukule spilling started at 21:45hrs and continues to present hour.