

Generation and Reservoirs Statistics

October 25, 2023



PUBLIC UTILITIES COMMISSION OF SRI LANKA

1. Daily Generation Mix in MWh

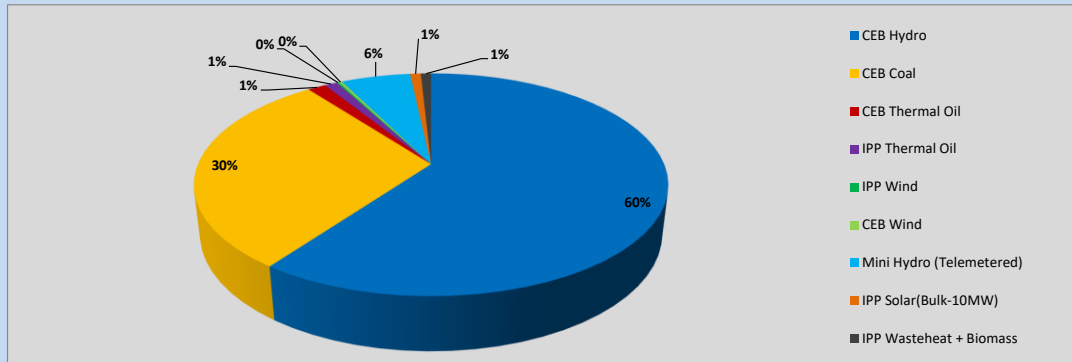


Table 01

	Generation (MWh)
CEB Hydro	22,679
CEB Coal	11,210
CEB Thermal Oil	556
IPP Thermal Oil	388
IPP Wind	67
CEB Wind	101
Mini Hydro (Telemetered)	2,141
IPP Solar (Bulk)	332
IPP Waste heat + Biomass	316
Total Generation (Excluding estimated figures)	37,790
* Estimated unserved energy	0
* Estimated Mini Hydro (Non telemetered)	2719
* Estimated IPP Solar PV (Bulk 1-10MW)	304
* Estimated Solar Roof Top PV	1930
Total Generation (Including estimated figures)	42,743

* Estimated figures of CEB generation report

Table 02

	Installed Capacity (MW)
CEB Hydro	1409
CEB Coal	810
CEB Thermal Oil	781
IPP Thermal Oil (West Coast, ACE Matara and ACE Embilipitiya)	387
IPP Wind	148
CEB Wind	100
Mini Hydro	416
IPP Waste heat + Biomass	50
IPP Solar	130
Rooftop Solar* (Ordinary)	267
Rooftop Solar* (LT Bulk)	256
Rooftop Solar* (HT Bulk)	61

Data Source - Monthly Review Report [May-2023]

2. Cumulative Dispatch

Following data excludes the contribution from roof top solar, non telemetered solar and mini hydro plants

Table 03 - Current Month

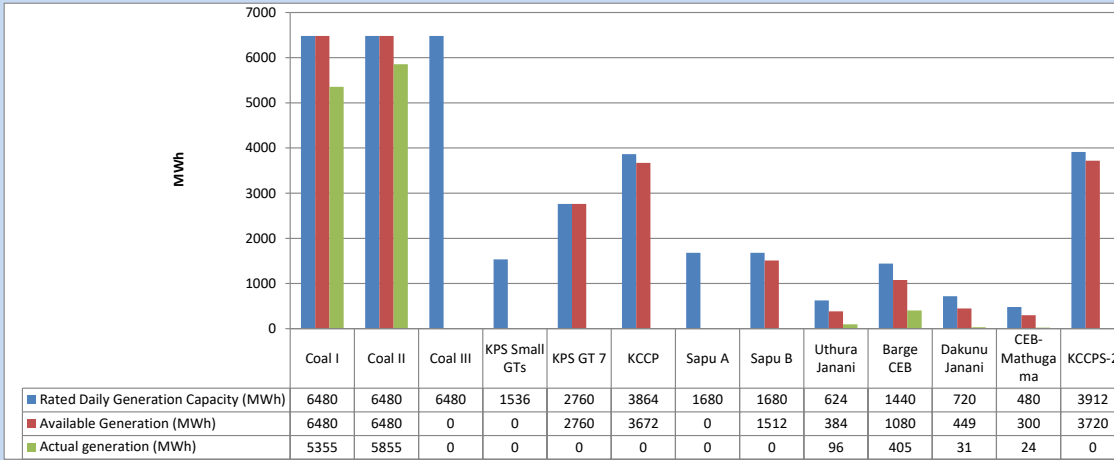
Category	Dispatch (GWh)	
CEB Hydro	427	47.29%
CEB Coal	292	32.40%
CEB Thermal Oil	59	6.49%
IPP Thermal	18	2.02%
SPP Wind	20	2.27%
CEB Wind	23	2.56%
Mini Hydro (Telemetered)	48	5.34%
IPP Solar(Bulk-10MW)	7	0.73%
IPP Waste heat + BMP	7	0.74%
Total	902	

Table 04 - Current Year

Category	Dispatch (GWh)	
CEB Hydro	2,992	26.10%
CEB Coal	4,211	36.73%
CEB Thermal Oil	1,952	17.03%
IPP Thermal	1,113	9.71%
SPP Wind	346	3.02%
CEB Wind	355	3.09%
Mini Hydro (Telemetered)	300	2.61%
IPP Solar(Bulk-10MW)	89	0.78%
IPP Waste heat	106	0.92%
Total	11,466	

3. CEB owned Thermal Plant Dispatch

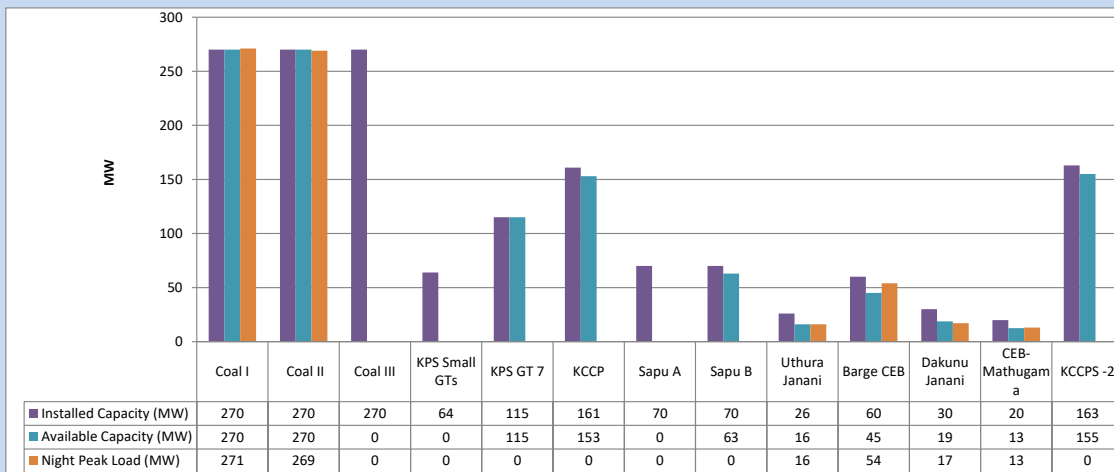
October 25, 2023



Available Generation is estimated based on plant availability at 6.00am on

October 26, 2023

4. CEB owned Thermal Plant Loading at the Night Peak

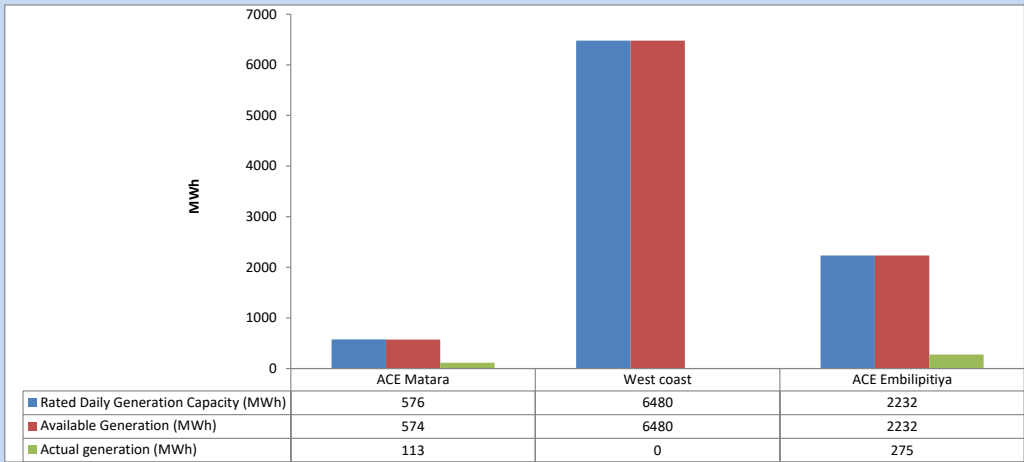


Plant availability is recorded at 6.00 am on

October 26, 2023

5. IPP owned Thermal Plant Dispatch

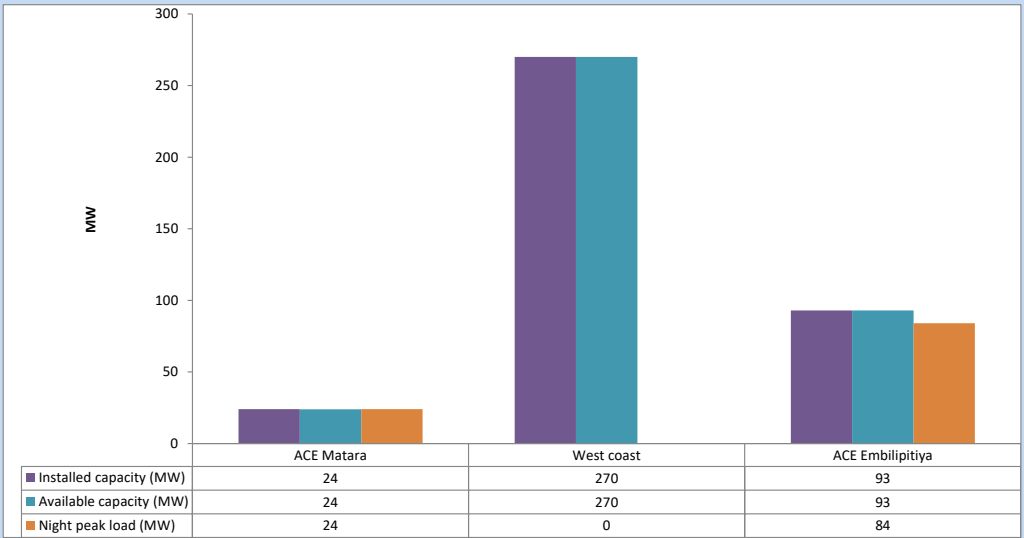
October 25, 2023



Available Generation is estimated based on plant availability at 6.00am on

October 26, 2023

6. IPP owned Thermal Plant Loading at the Night Peak

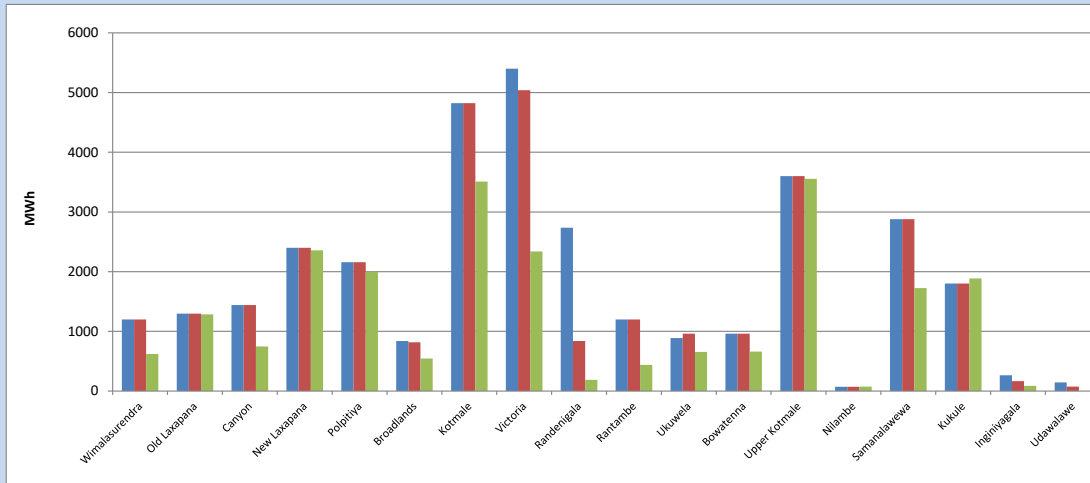


Plant availability is recorded at 6.00 am on

October 26, 2023

7. Major Hydro Plant Dispatch

October 25, 2023

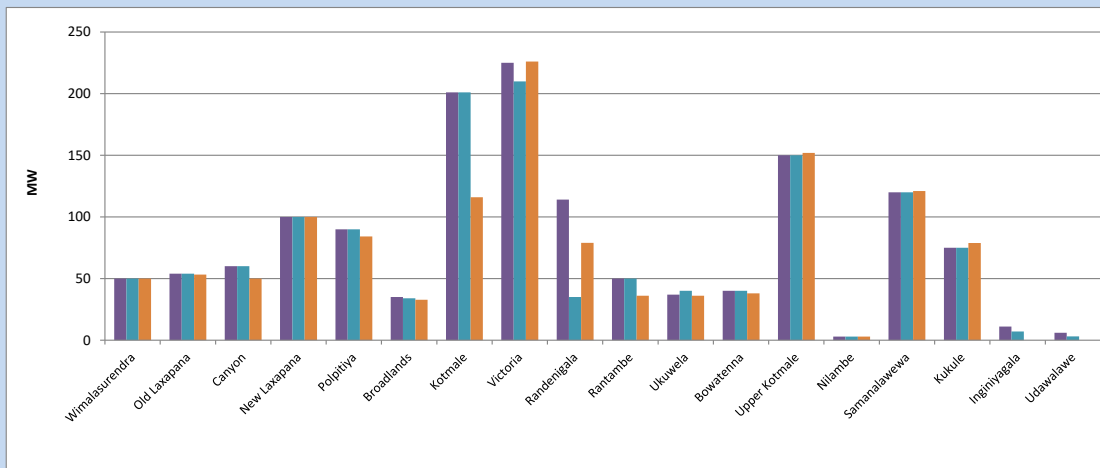


Available Generation is estimated based on plant availability at 6.00am on October 26, 2023
Broadlands power plant is operating in the Commissioning Stage

October 26, 2023

8. Major Hydro Plant Loading at Night Peak

October 25, 2023



Plant availability is recorded at 6.00 am on October 26, 2023
Broadlands power plant is operating in the Commissioning Stage

October 26, 2023

9. Summary of Major Plant performance

Table 05

Plant	Installed Capacity	Plant Availability	Night peak Load	Plant Dispatch
	(MW)	(MW)	(MW)	(MWh)
Wimalasurendra	50	50	50	621
Old Laxapana Canyon	54	54	53	1,285
New Laxapana	60	60	50	746
Polpitiya	100	100	100	2,356
Broadlands	90	90	84	2,000
Kotmale	35	34	33	546
Victoria	201	201	116	3,510
Randenigala	225	210	226	2,340
Rantambe	114	35	79	187
Ukuwela	50	50	36	437
Bowatenna	37	40	36	654
Upper Kotmale	40	40	38	663
Nilambe	150	150	152	3,556
Samanalawewa	3	3	3	76
Kukule	120	120	121	1,726
Inginiyagala	75	75	79	1,888
Udawalawe	11	7	0	88
Puttalam Coal I	6	3	0	0
Puttalam Coal II	270	270	271	5,355
Puttalam Coal III	270	270	269	5,855
KPS Small GTs	270	0	0	0
KPS GT 7	64	0	0	0
KCCP	115	115	0	0
Sapugaskanda A	161	153	0	0
Sapugaskanda B	70	0	0	0
Uthura Janani	70	63	0	0
Barge CEB	26	16	16	96
CEB-Hambantota	60	45	54	405
CEB-Mathugama	30	19	17	31
ACE Matara	20	13	13	24
Asia Power	24	24	24	113
KCCPS -2	50	0	0	0
West Coast	163	155	0	0
Nothern Power	270	270	0	0
ACE Embilipitiya	36	0	0	0
Total	93	93	84	275
	3,483	2,827	2,066	37,790

Plant availability is the availability recorded at 6 am on

October 26, 2023

10. Contribution to the Night Peak in MW

October 25, 2023

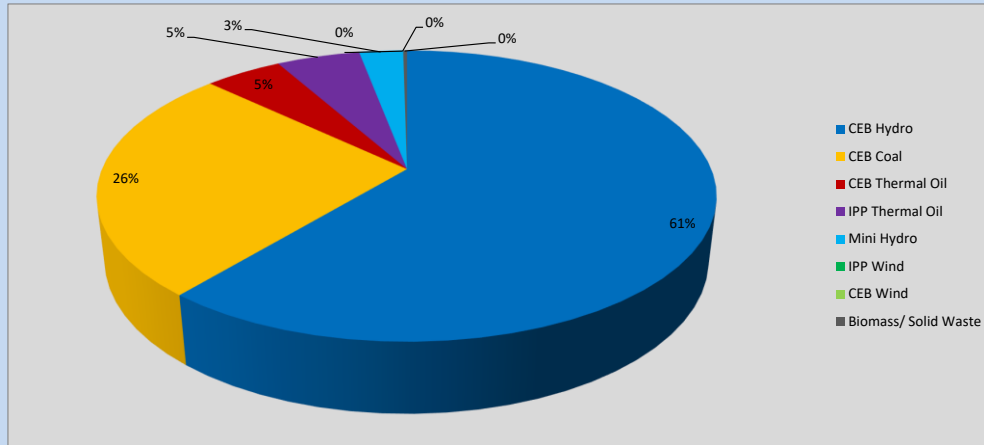


Table 06

CEB Hydro	1269	MW
CEB Coal	540	MW
CEB Thermal Oil	100	MW
IPP Thermal Oil	108	MW
Mini Hydro (Telemetered)	57	MW
IPP Wind	0	MW
CEB Wind	0	MW
Biomass/ Solid Waste	5	MW

Recorded Peak Demand Data

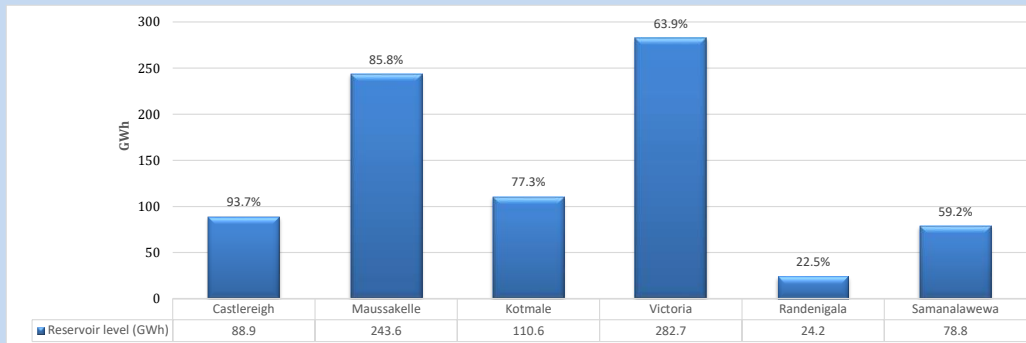
Table 07

Night Peak*	2,079	MW
Day Peak Maximum Demand	1,872	MW
Day Peak Minimum Demand	1,529	MW
Off Peak Minimum Demand	1,130	MW

Above figures are excluding contribution from roof top solar, non telemetered solar and mini hydro plants

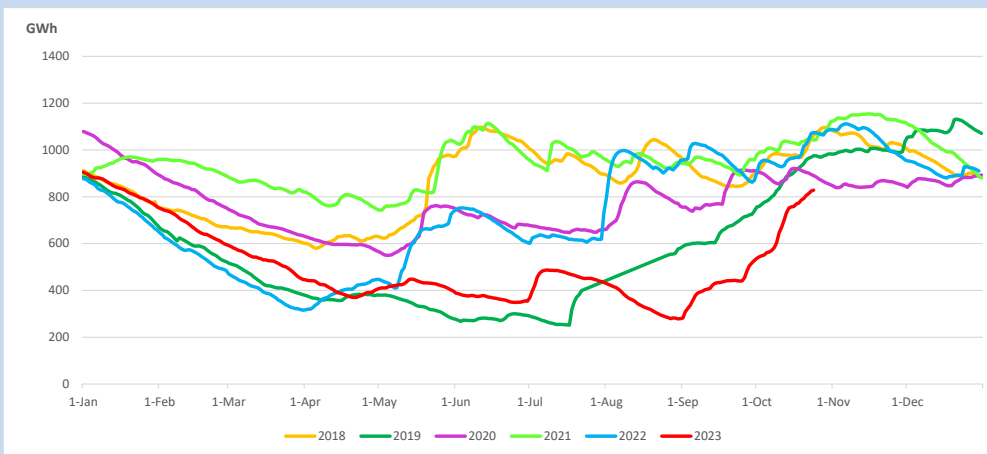
Reservoir Levels -

as at 06.00 Hr on October 26, 2023

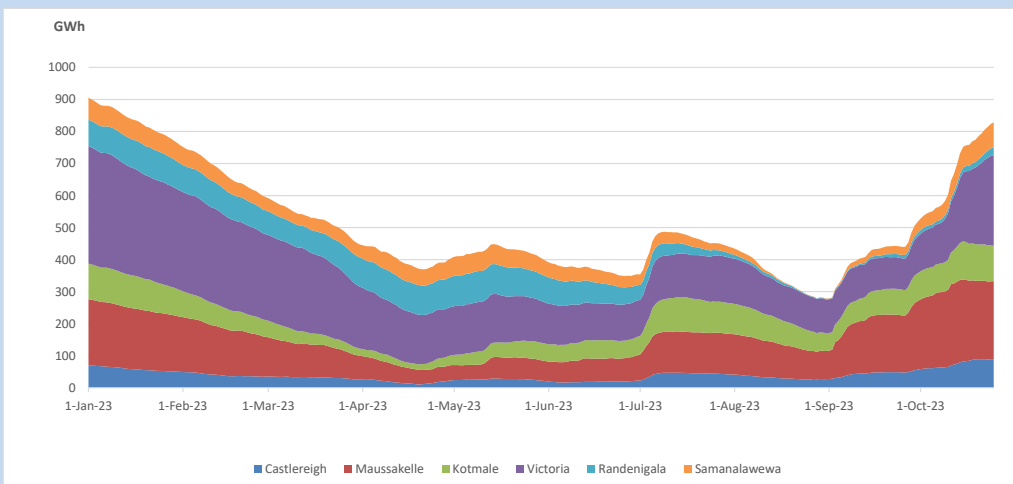


Total Reservoir Level 828.8 GWh
% of Total capacity 68.8%

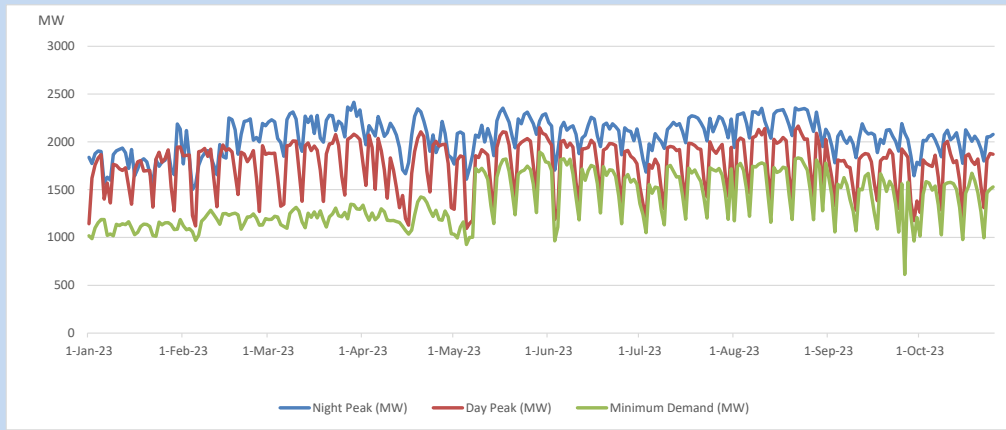
11. Comparison of Total Reservoir Storage Levels with Past Years



12. Variation of Major Hydro Reservoir Levels in the current year (GWh)



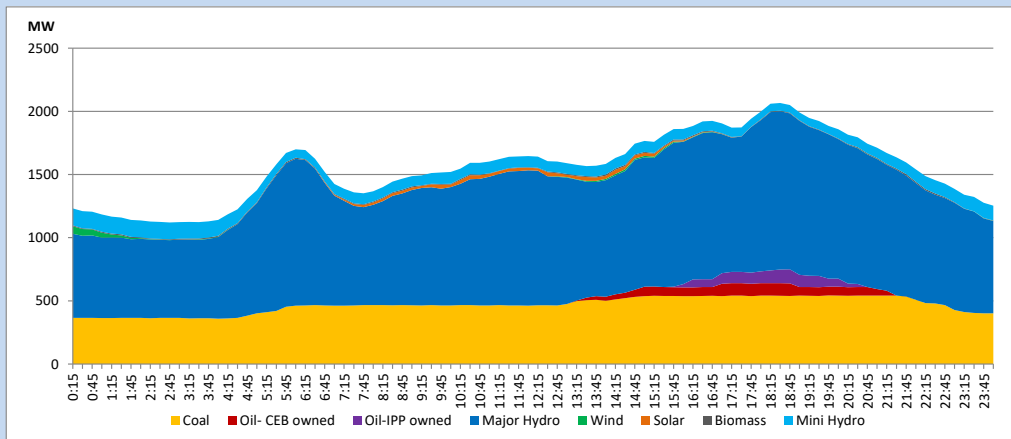
13. Variation of Demand during the current year



The above figures are excluding contribution from roof top solar, non telemetered solar and mini hydro plants

14. Daily Load Curve

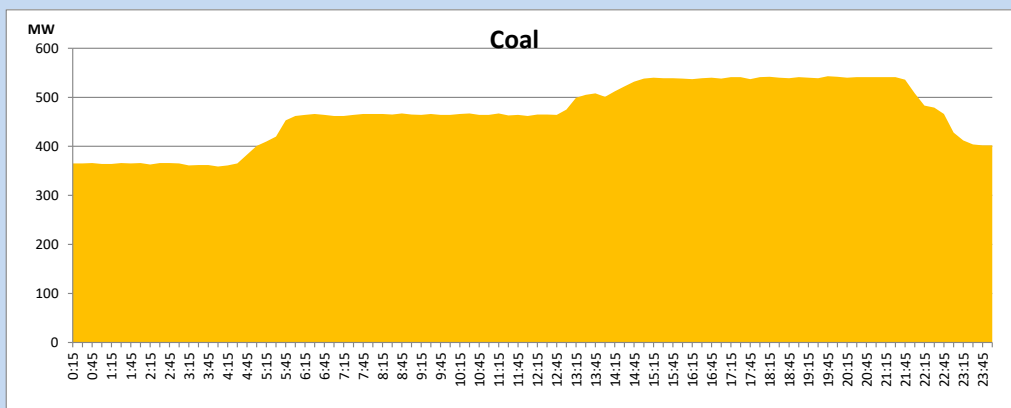
October 25, 2023



Solar and wind data is based on Telemetered Power Stations only

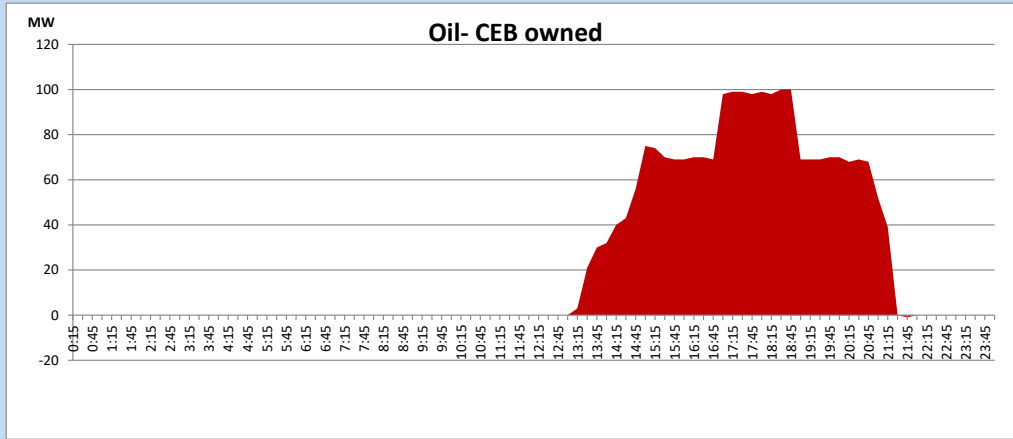
Coal Generation during

October 25, 2023



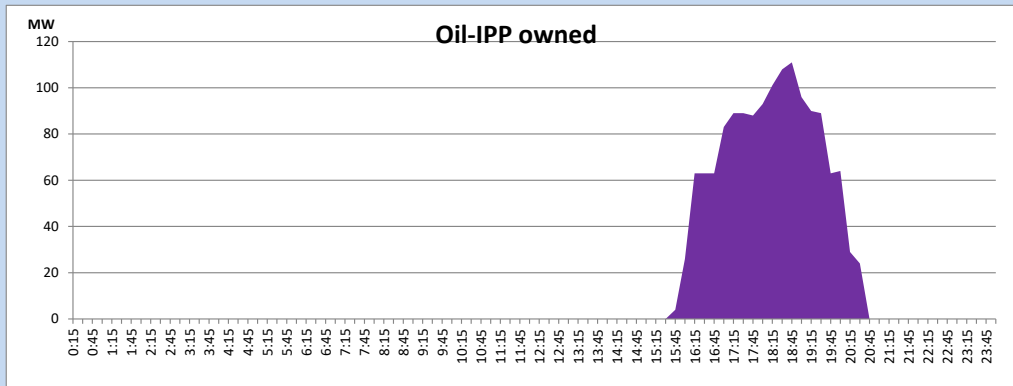
CEB Oil Plant Generation during

October 25, 2023



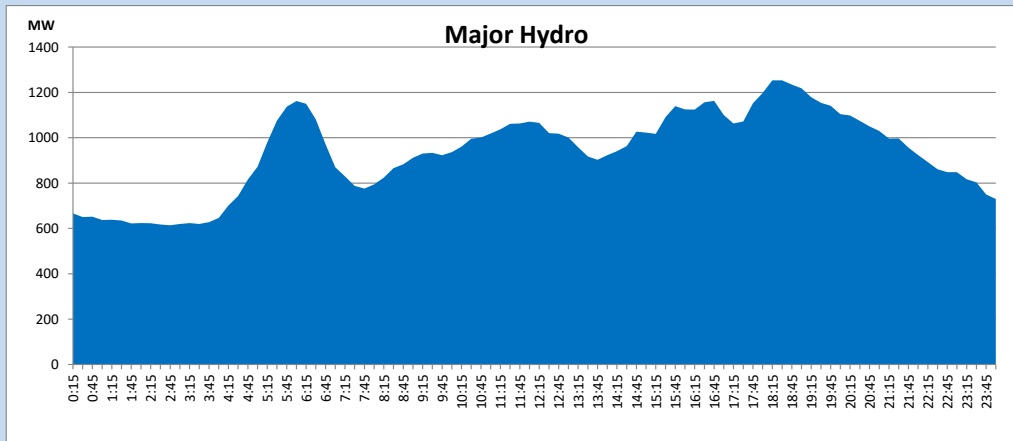
IPP Oil Plant Generation during

October 25, 2023



Major Hydro Generation during

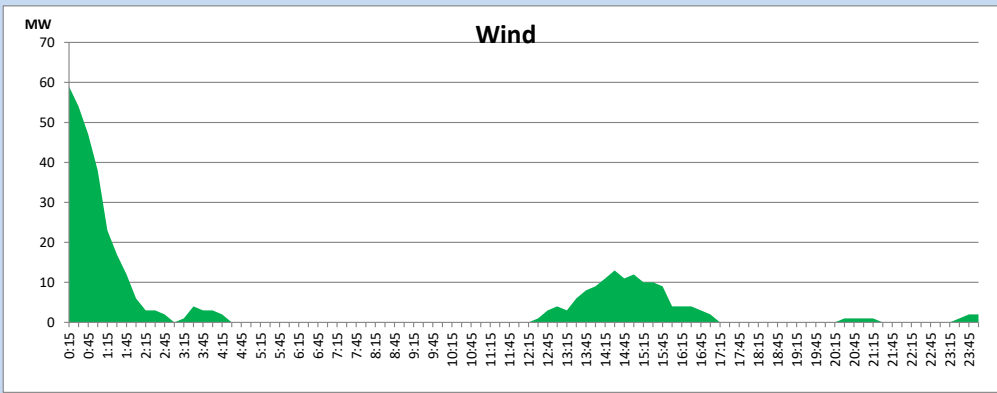
October 25, 2023



Wind Generation during

October 25, 2023

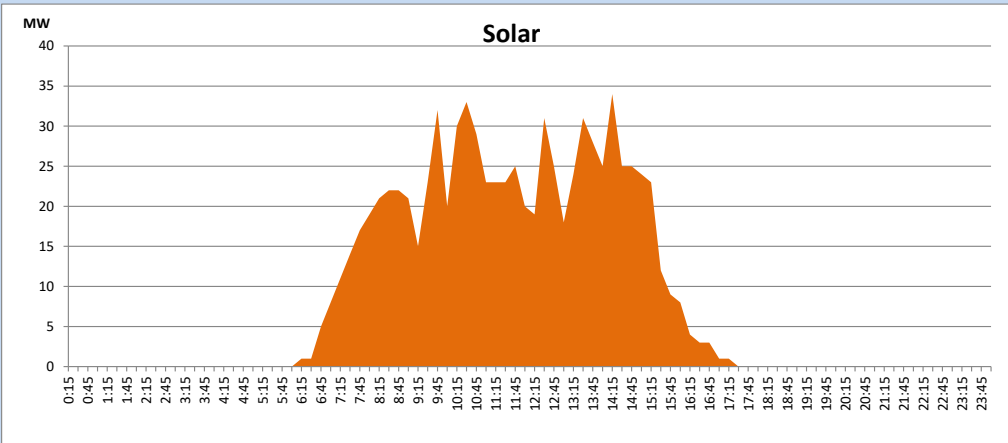
Based on Telemetered Power Stations only



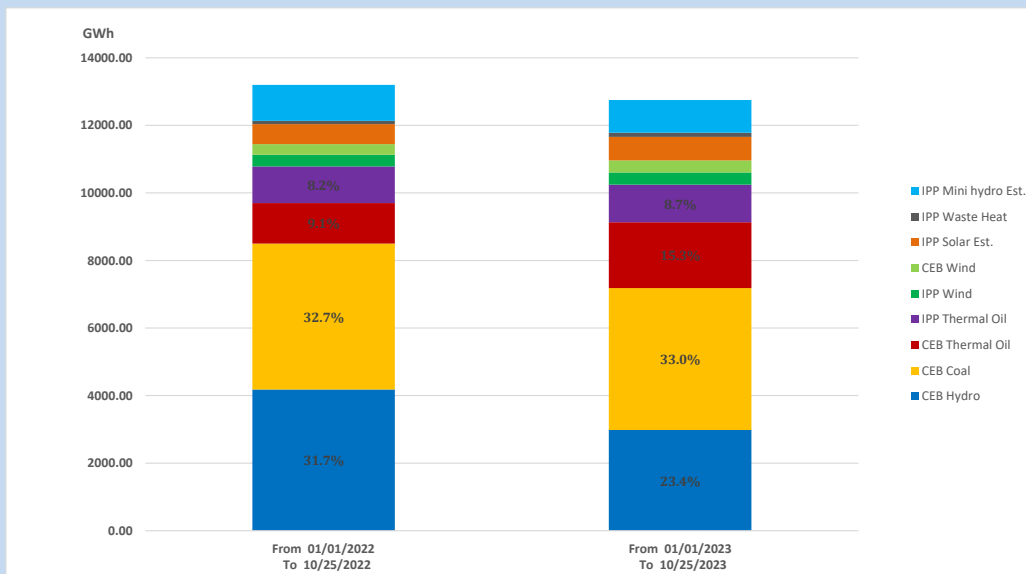
Solar Generation during

October 25, 2023

Based on Telemetered Power Stations only



15. Cumulative Dispatch Comparison with Last Year



Cumulative dispatch

From 01/01/2022 To 10/25/2022

13199 GWh

From 01/01/2023 To 10/25/2023

12749 GWh

The above figures are including contribution from roof top solar, non telemetered solar and mini hydro plants (figures have been adjusted based on the data from the CEB monthly review reports.)

Thermal Plant Fuel types

Table 08

Power Station	Primary Fuel
CEB Thermal	
Sapugaskanda 1	Heavy Fuel
Sapugaskanda 2	Heavy Fuel
Kelanitissa Small Gas Turbines	Auto Diesel
GT 7 - Kelanitissa	Auto Diesel
Kelanitissa CCY	Naphtha or Diesel
Lakvijaya 1	Coal
Lakvijaya 2	Coal
Lakvijaya 3	Coal
Uthuru Janani	Heavy Fuel
Barge CEB	Heavy Fuel
KCCPS -2	Auto Diesel

Power Station	Primary Fuel
Private Thermal	
West Coast	Auto Diesel / Heavy Fuel
ACE Matara	Heavy Fuel
ACE Embilipitiya	Heavy Fuel

Major Incidents reported during the day

October 25, 2023

- 1) Deniyaya - N'Galle 132kV cct tripped and A/R from both ends and Balangoda - N'Galle 132kV cct tripped and A/R from both ends at 16:02hrs due to the operation of distance protection. At the same time, Balangoda -Deniyaya 132kV cct tripped from both ends due to the operation of distance protection. Balangoda -Deniyaya 132kV cct normalized at 16:15hrs.
- 2) Athurugiriya - Thulhiriya - N'Polpitiya 132 kV cct tripped & and A/R from all ends at 17:42hrs due to the operation of distance protection.
- 3) Norton pond, spilling started at 18:38hrs and stopped at 03:15hrs (26.10.2023)
- 4) Kukule Pond, spilling stopped at 5:15hrs (26.10.2023).