

Generation and Reservoirs Statistics

October 23, 2023



PUBLIC UTILITIES COMMISSION OF SRI LANKA

1. Daily Generation Mix in MWh

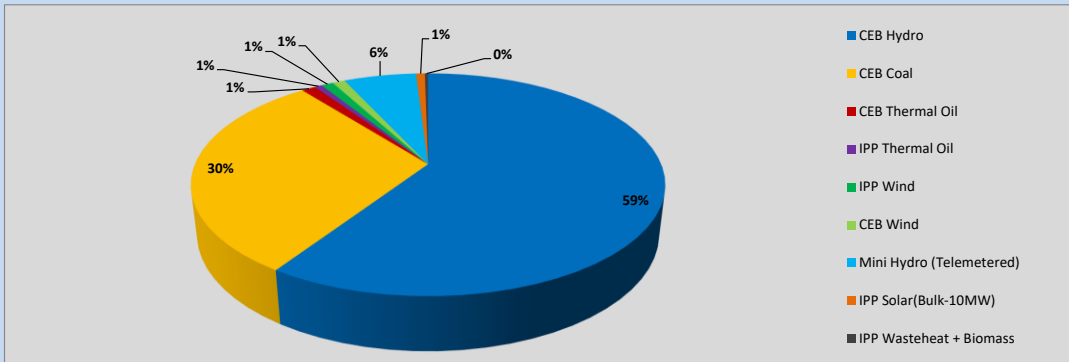


Table 01

	Generation (MWh)
CEB Hydro	21,476
CEB Coal	10,892
CEB Thermal Oil	414
IPP Thermal Oil	215
IPP Wind	353
CEB Wind	368
Mini Hydro (Telemetered)	2,140
IPP Solar (Bulk)	260
IPP Waste heat + Biomass	95
Total Generation (Excluding estimated figures)	36,213
* Estimated unserved energy	0
* Estimated Mini Hydro (Non telemetered)	2720
* Estimated IPP Solar PV (Bulk 1-10MW)	304
* Estimated Solar Roof Top PV	1930
Total Generation (Including estimated figures)	41,167

* Estimated figures of CEB generation report

Table 02

	Installed Capacity (MW)
CEB Hydro	1409
CEB Coal	810
CEB Thermal Oil	781
IPP Thermal Oil (West Coast, ACE Matara and ACE Embilipitiya)	387
IPP Wind	148
CEB Wind	100
Mini Hydro	416
IPP Waste heat + Biomass	50
IPP Solar	130
Rooftop Solar* (Ordinary)	267
Rooftop Solar* (LT Bulk)	256
Rooftop Solar* (HT Bulk)	61

Data Source - Monthly Review Report [May-2023]

2. Cumulative Dispatch

Following data excludes the contribution from roof top solar, non telemetered solar and mini hydro plants

Table 03 - Current Month

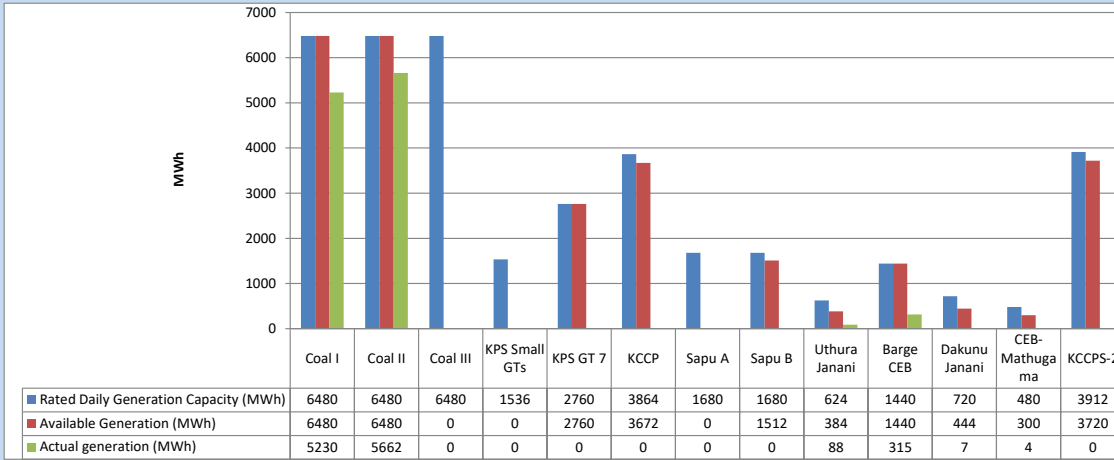
Category	Dispatch (GWh)	
CEB Hydro	381	46.16%
CEB Coal	270	32.69%
CEB Thermal Oil	58	6.97%
IPP Thermal	17	2.11%
SPP Wind	20	2.44%
CEB Wind	23	2.75%
Mini Hydro (Telemetered)	44	5.33%
IPP Solar(Bulk-10MW)	6	0.72%
IPP Waste heat + BMP	6	0.73%
Total	826	

Table 04 - Current Year

Category	Dispatch (GWh)	
CEB Hydro	2,947	25.87%
CEB Coal	4,189	36.78%
CEB Thermal Oil	1,951	17.13%
IPP Thermal	1,112	9.76%
SPP Wind	345	3.03%
CEB Wind	354	3.11%
Mini Hydro (Telemetered)	296	2.60%
IPP Solar(Bulk-10MW)	88	0.78%
IPP Waste heat	105	0.93%
Total	11,390	

3. CEB owned Thermal Plant Dispatch

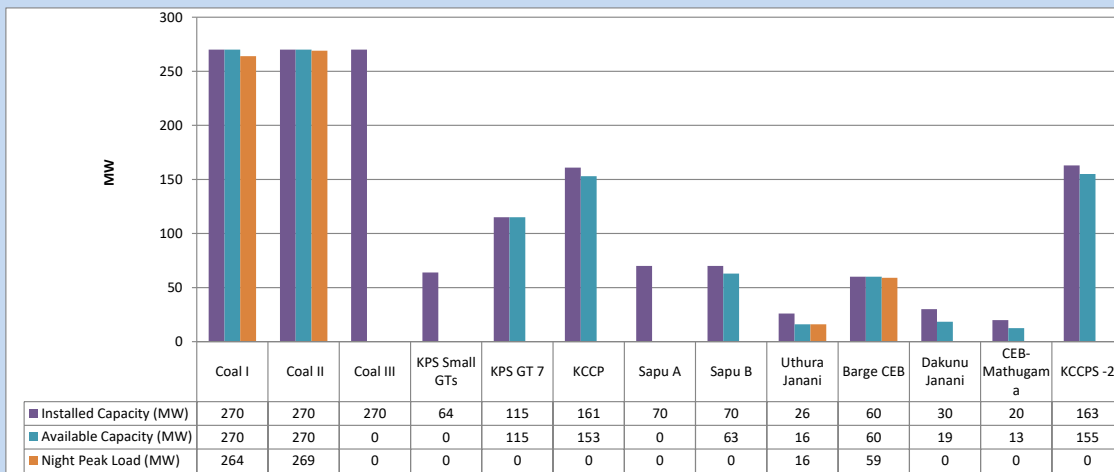
October 23, 2023



Available Generation is estimated based on plant availability at 6.00am on

October 24, 2023

4. CEB owned Thermal Plant Loading at the Night Peak

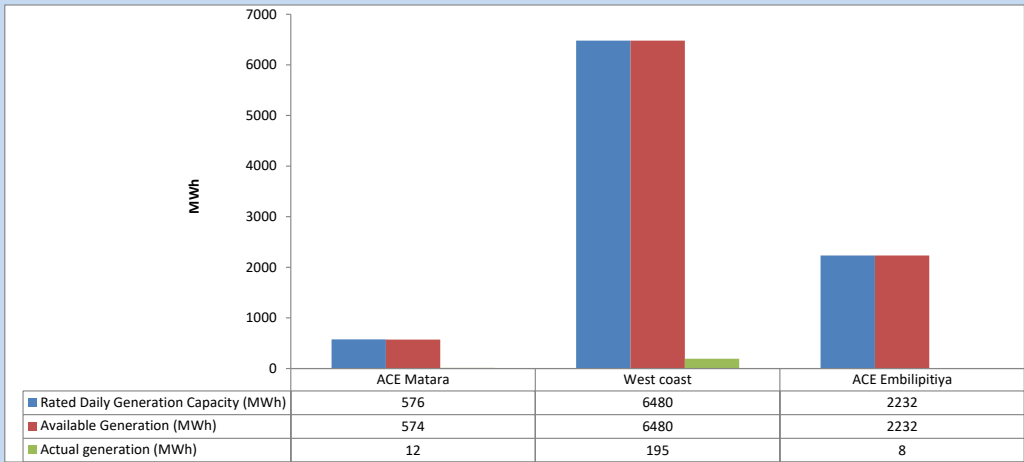


Plant availability is recorded at 6.00 am on

October 24, 2023

5. IPP owned Thermal Plant Dispatch

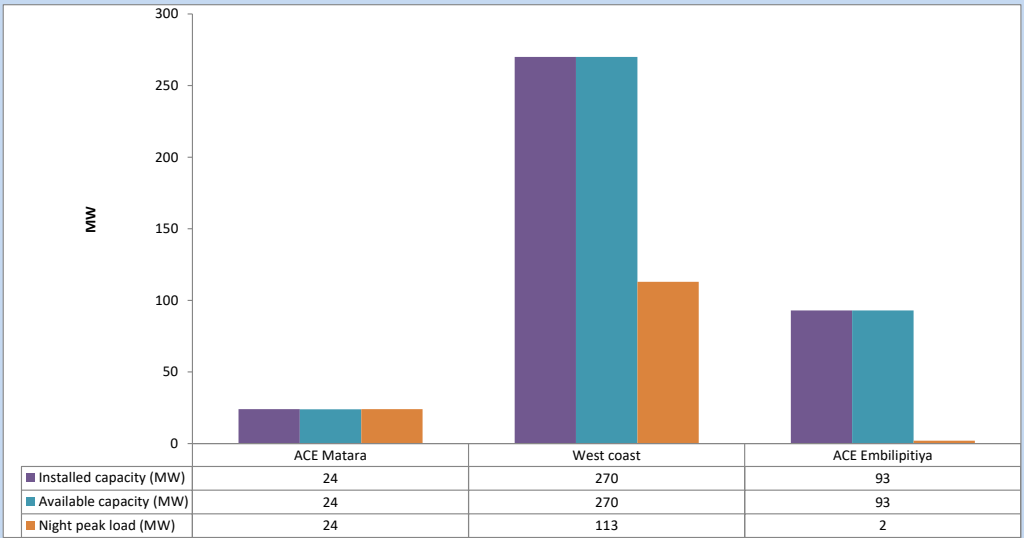
October 23, 2023



Available Generation is estimated based on plant availability at 6.00am on

October 24, 2023

6. IPP owned Thermal Plant Loading at the Night Peak

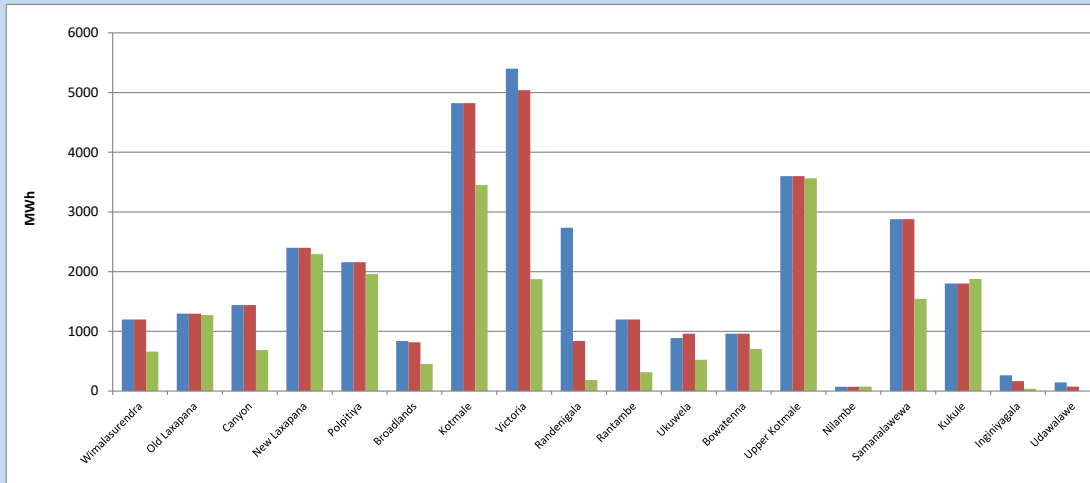


Plant availability is recorded at 6.00 am on

October 24, 2023

7. Major Hydro Plant Dispatch

October 23, 2023

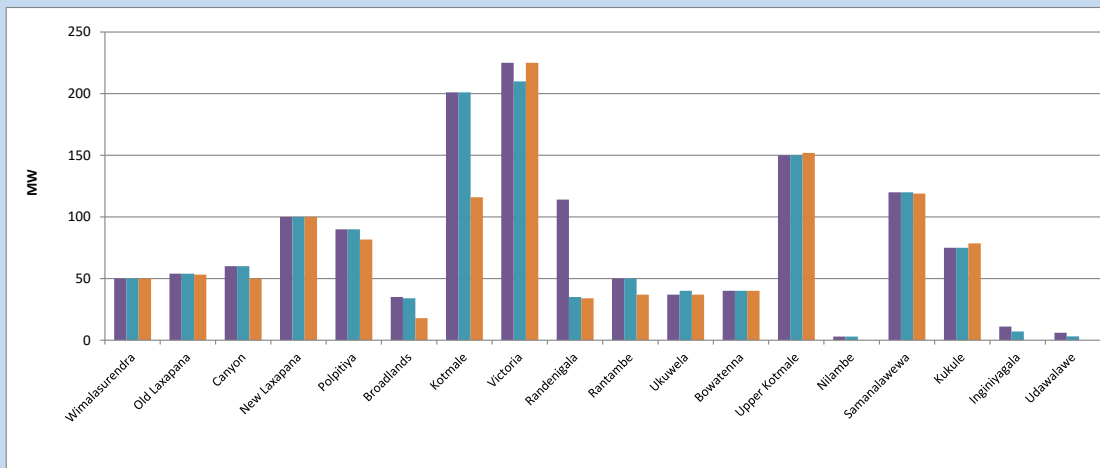


Available Generation is estimated based on plant availability at 6.00am on October 24, 2023
Broadlands power plant is operating in the Commissioning Stage

October 24, 2023

8. Major Hydro Plant Loading at Night Peak

October 23, 2023



Plant availability is recorded at 6.00 am on October 24, 2023
Broadlands power plant is operating in the Commissioning Stage

October 24, 2023

9. Summary of Major Plant performance

Table 05

Plant	Installed Capacity	Plant Availability	Night peak Load	Plant Dispatch
	(MW)	(MW)	(MW)	(MWh)
Wimalasurendra	50	50	50	662
Old Laxapana	54	54	53	1,274
Canyon	60	60	50	685
New Laxapana	100	100	100	2,293
Polpitiya	90	90	82	1,960
Broadlands	35	34	18	455
Kotmale	201	201	116	3,450
Victoria	225	210	225	1,873
Randenigala	114	35	34	184
Rantambe	50	50	37	315
Ukuwela	37	40	37	523
Bowatenna	40	40	40	705
Upper Kotmale	150	150	152	3,565
Nilambe	3	3	0	74
Samanalawewa	120	120	119	1,544
Kukule	75	75	79	1,877
Inginiyagala	11	7	0	37
Udawalawe	6	3	0	0
Puttalam Coal I	270	270	264	5,230
Puttalam Coal II	270	270	269	5,662
Puttalam Coal III	270	0	0	0
KPS Small GTs	64	0	0	0
KPS GT 7	115	115	0	0
KCCP	161	153	0	0
Sapugaskanda A	70	0	0	0
Sapugaskanda B	70	63	0	0
Uthura Janani	26	16	16	88
Barge CEB	60	60	59	315
CEB-Hambantota	30	19	0	7
CEB-Mathugama	20	13	0	4
ACE Matara	24	24	24	12
Asia Power	50	0	0	0
KCCPS -2	163	155	0	0
West Coast	270	270	113	195
Nothern Power	36	0	0	0
ACE Embilipitiya	93	93	2	8
Total	3,483	2,842	2,038	36,213

Plant availability is the availability recorded at 6 am on

October 24, 2023

10. Contribution to the Night Peak in MW

October 23, 2023

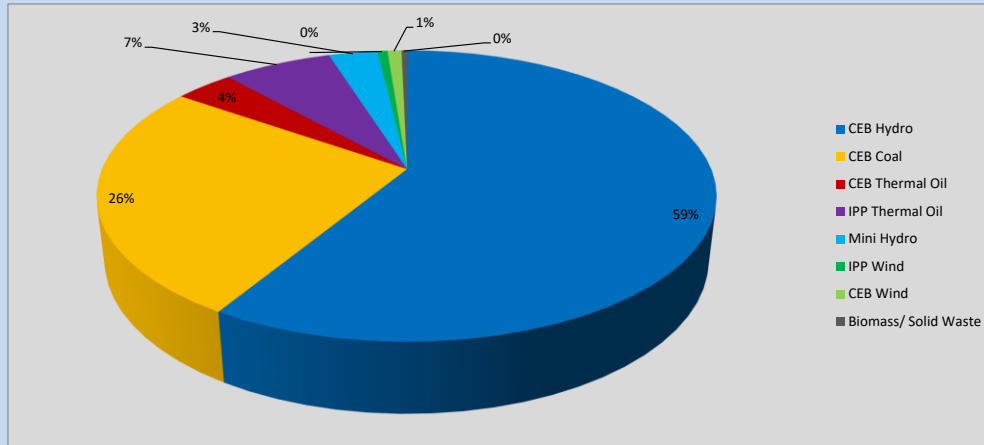


Table 06

CEB Hydro	1204	MW
CEB Coal	533	MW
CEB Thermal Oil	75	MW
IPP Thermal Oil	139	MW
Mini Hydro (Telemetered)	63	MW
IPP Wind	12.6	MW
CEB Wind	18	MW
Biomass/ Solid Waste	7	MW

Recorded Peak Demand Data

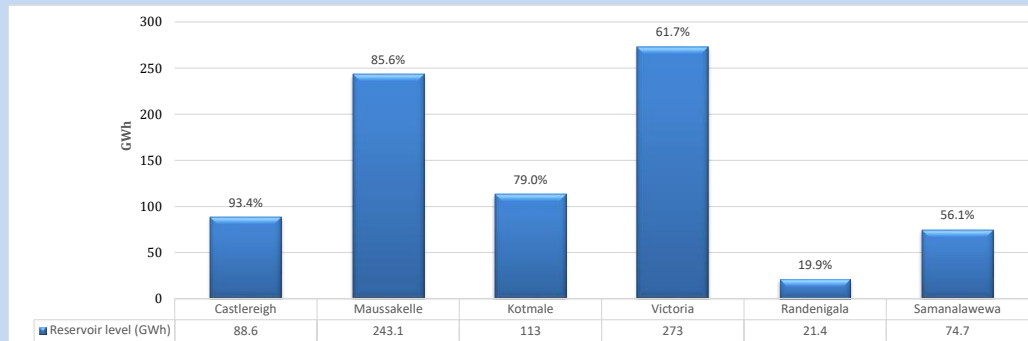
Table 07

Night Peak*	2,051	MW
Day Peak Maximum Demand	1,815	MW
Day Peak Minimum Demand	1,469	MW
Off Peak Minimum Demand	986	MW

Above figures are excluding contribution from roof top solar, non telemetered solar and mini hydro plants

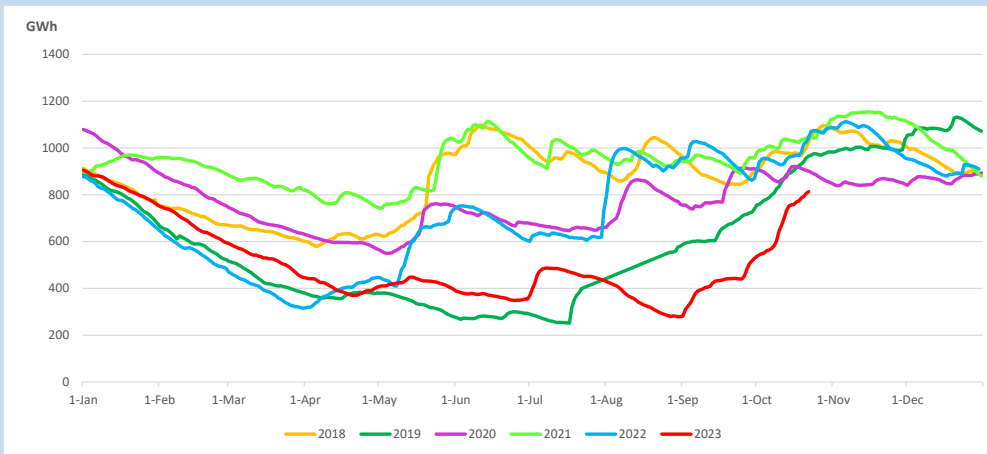
Reservoir Levels -

as at 06.00 Hr on October 24, 2023

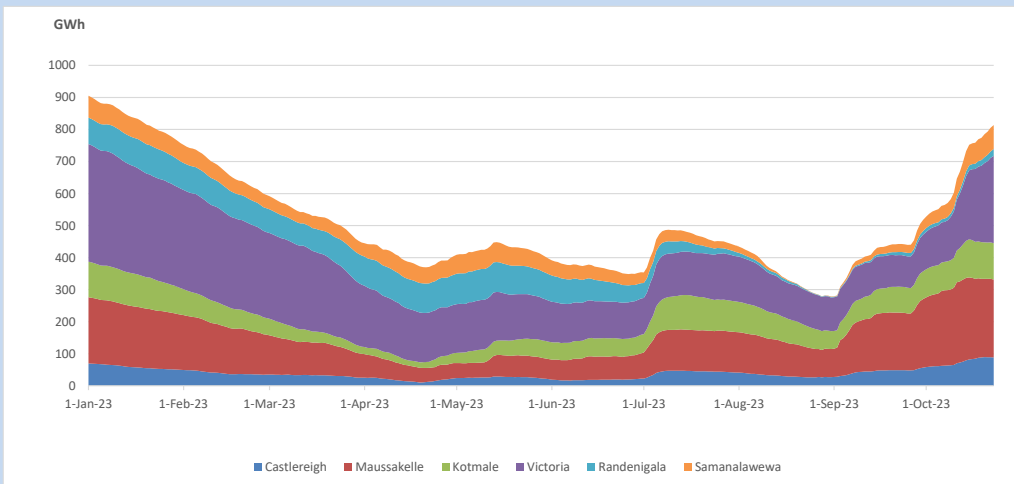


Total Reservoir Level 813.8 GWh
 % of Total capacity 67.5%

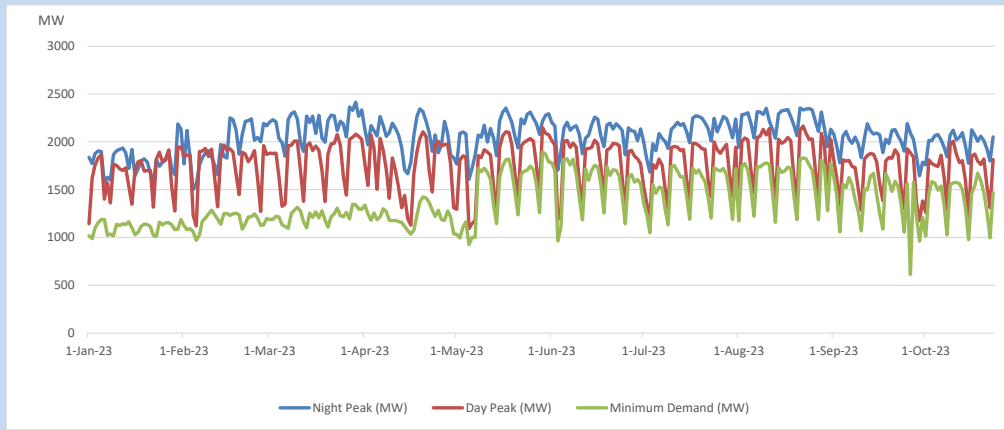
11. Comparison of Total Reservoir Storage Levels with Past Years



12. Variation of Major Hydro Reservoir Levels in the current year (GWh)



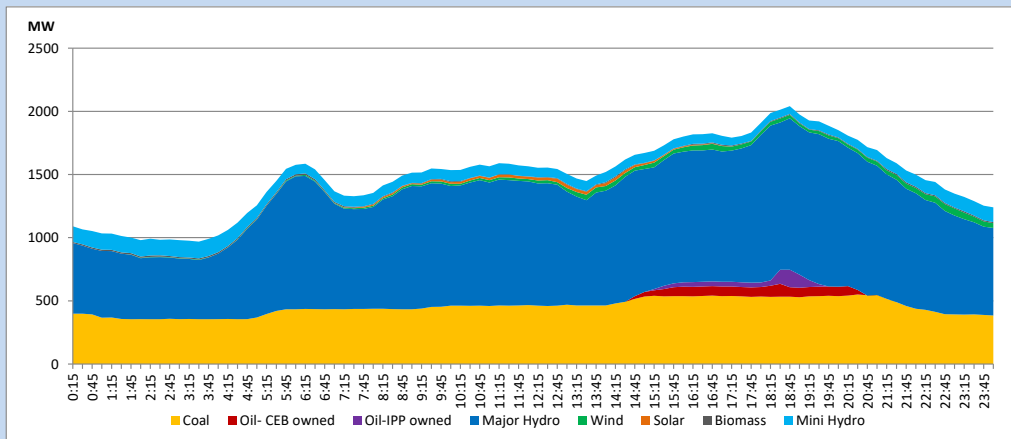
13. Variation of Demand during the current year



The above figures are excluding contribution from roof top solar, non telemetered solar and mini hydro plants

14. Daily Load Curve

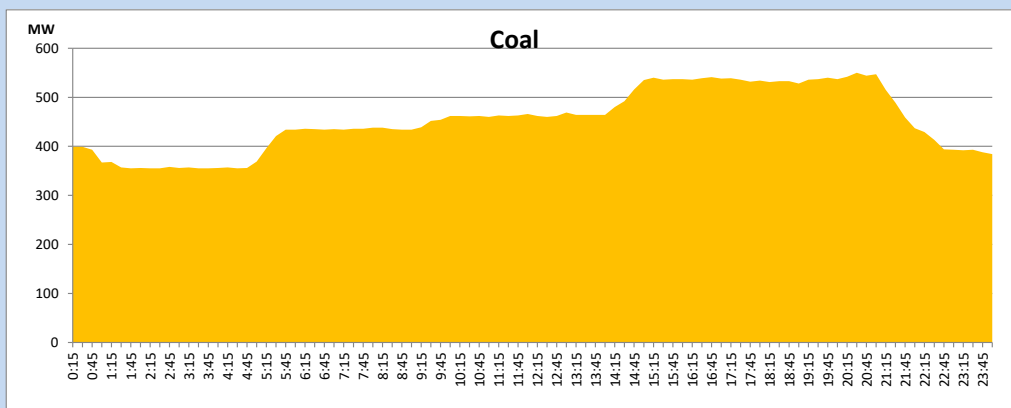
October 23, 2023



Solar and wind data is based on Telemetered Power Stations only

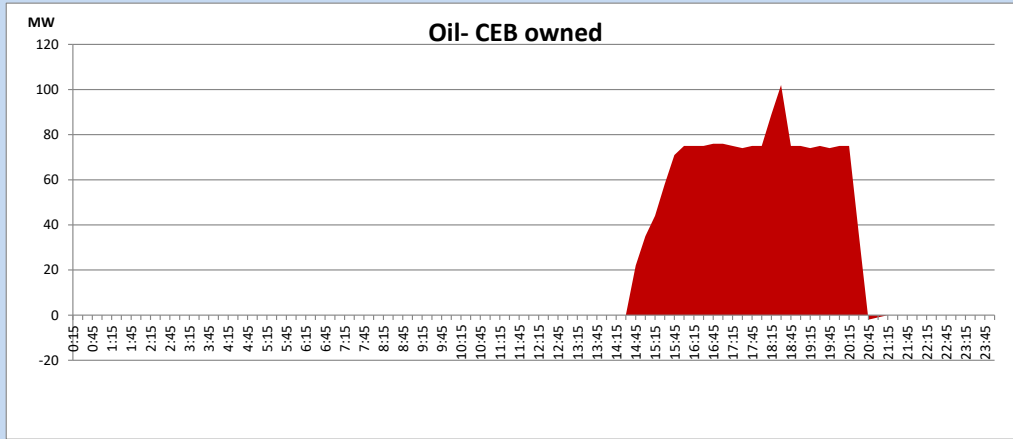
Coal Generation during

October 23, 2023



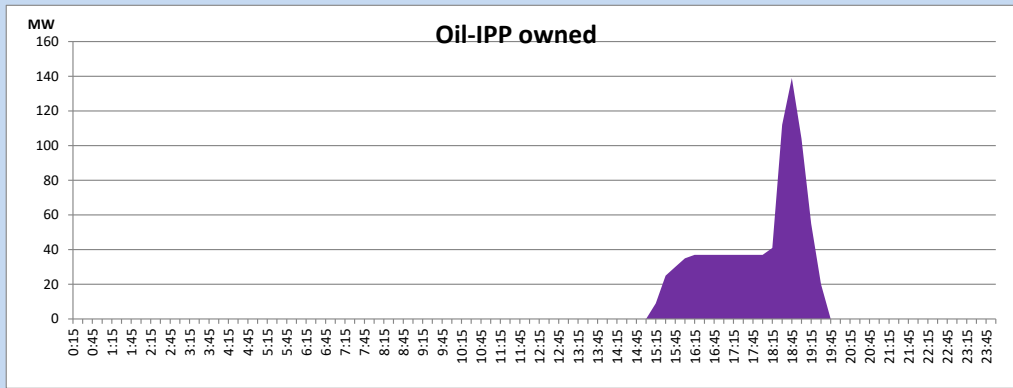
CEB Oil Plant Generation during

October 23, 2023



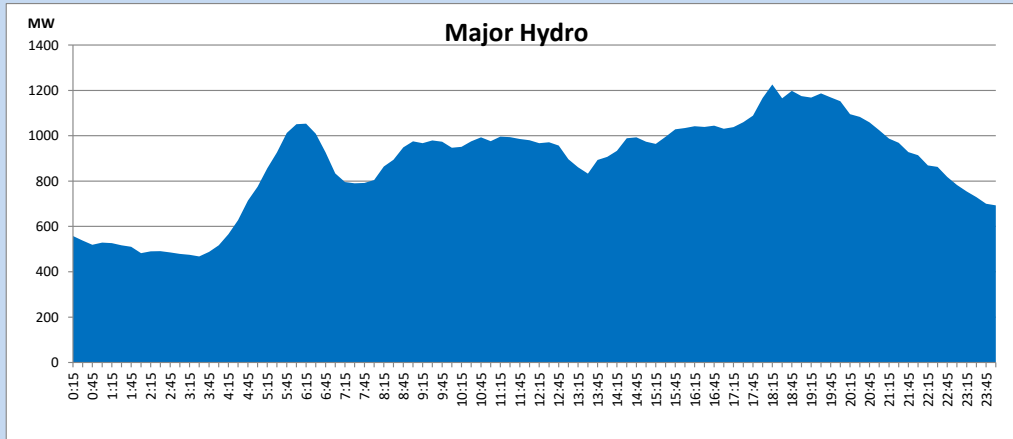
IPP Oil Plant Generation during

October 23, 2023



Major Hydro Generation during

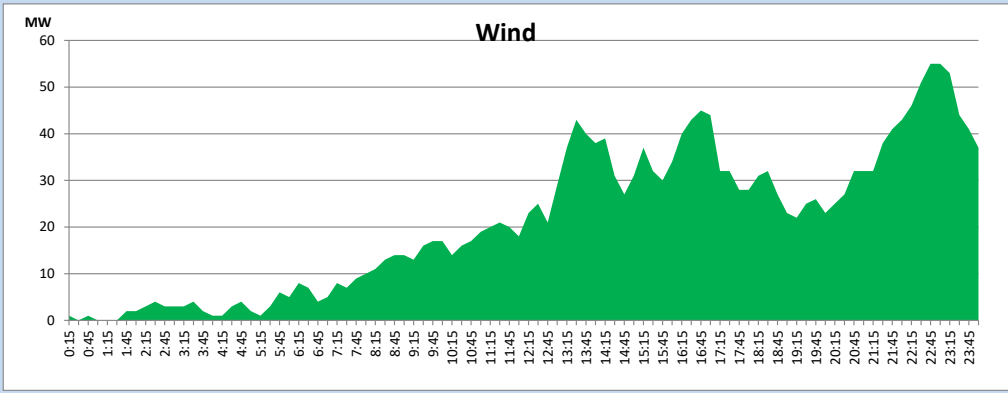
October 23, 2023



Wind Generation during

October 23, 2023

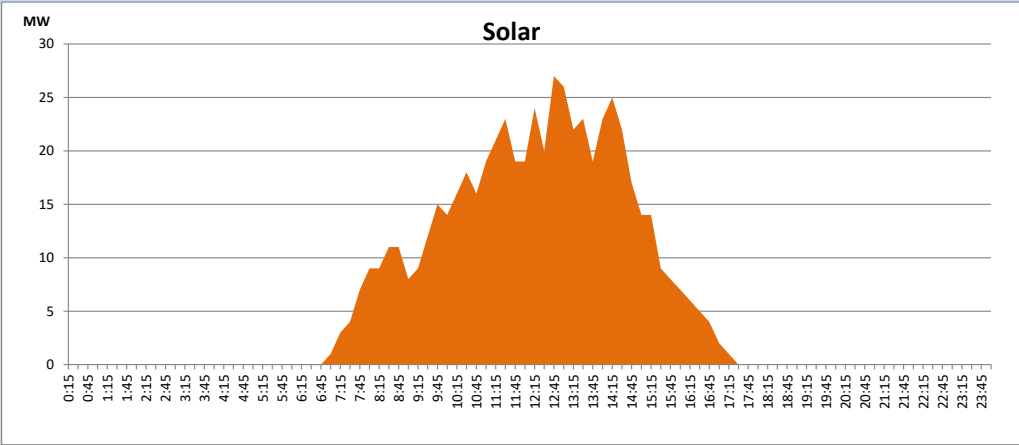
Based on Telemetered Power Stations only



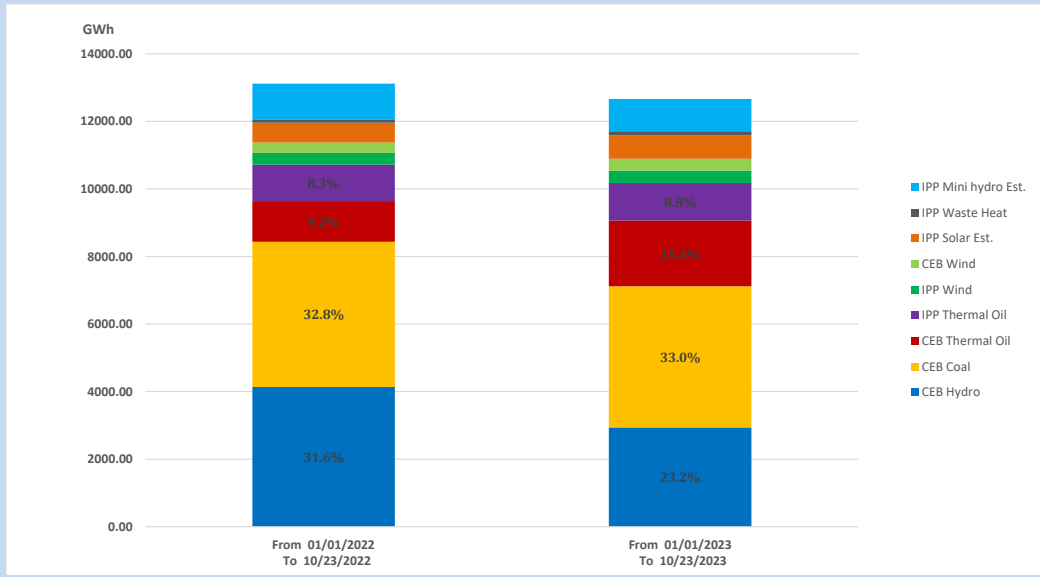
Solar Generation during

October 23, 2023

Based on Telemetered Power Stations only



15. Cumulative Dispatch Comparison with Last Year



Cumulative dispatch

From 01/01/2022 To 10/23/2022

13116 GWh

From 01/01/2023 To 10/23/2023

12664 GWh

The above figures are including contribution from roof top solar, non telemetered solar and mini hydro plants (figures have been adjusted based on the data from the CEB monthly review reports.)

Thermal Plant Fuel types**Table 08**

Power Station	Primary Fuel
CEB Thermal	
Sapugaskanda 1	Heavy Fuel
Sapugaskanda 2	Heavy Fuel
Kelanitissa Small Gas Turbines	Auto Diesel
GT 7 - Kelanitissa	Auto Diesel
Kelanitissa CCY	Naphtha or Diesel
Lakvijaya 1	Coal
Lakvijaya 2	Coal
Lakvijaya 3	Coal
Uthuru Janani	Heavy Fuel
Barge CEB	Heavy Fuel
KCCPS -2	Auto Diesel

Power Station	Primary Fuel
Private Thermal	
West Coast	Auto Diesel / Heavy Fuel
ACE Matara	Heavy Fuel
ACE Embilipitiya	Heavy Fuel

Major Incidents reported during the day

October 23, 2023

- 1) Norton pond spilled intermittently and spilling stopped at 1:05hrs (24.10.2023)
- 2) Kukule spilling stopped at 5:01hrs (24.10.2023).