

Generation and Reservoirs Statistics

October 16, 2023



PUBLIC UTILITIES COMMISSION OF SRI LANKA

1. Daily Generation Mix in MWh

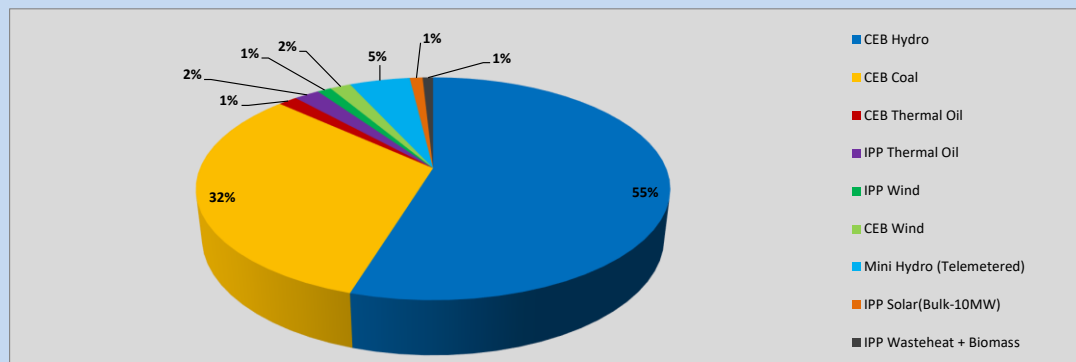


Table 01

	Generation (MWh)
CEB Hydro	20,079
CEB Coal	11,740
CEB Thermal Oil	567
IPP Thermal Oil	757
IPP Wind	413
CEB Wind	619
Mini Hydro (Telemetered)	1,812
IPP Solar (Bulk)	385
IPP Waste heat + Biomass	313
Total Generation (Excluding estimated figures)	36,685
* Estimated unserved energy	0
* Estimated Mini Hydro (Non telemetered)	3048
* Estimated IPP Solar PV (Bulk 1-10MW)	304
* Estimated Solar Roof Top PV	1930
Total Generation (Including estimated figures)	41,967

* Estimated figures of CEB generation report

Table 02

	Installed Capacity (MW)
CEB Hydro	1409
CEB Coal	810
CEB Thermal Oil	781
IPP Thermal Oil (West Coast, ACE Matara and ACE Embilipitiya)	387
IPP Wind	148
CEB Wind	100
Mini Hydro	416
IPP Waste heat + Biomass	50
IPP Solar	130
Rooftop Solar* (Ordinary)	267
Rooftop Solar* (LT Bulk)	256
Rooftop Solar* (HT Bulk)	61

Data Source - Monthly Review Report [May-2023]

2. Cumulative Dispatch

Following data excludes the contribution from roof top solar, non telemetered solar and mini hydro plants

Table 03 - Current Month

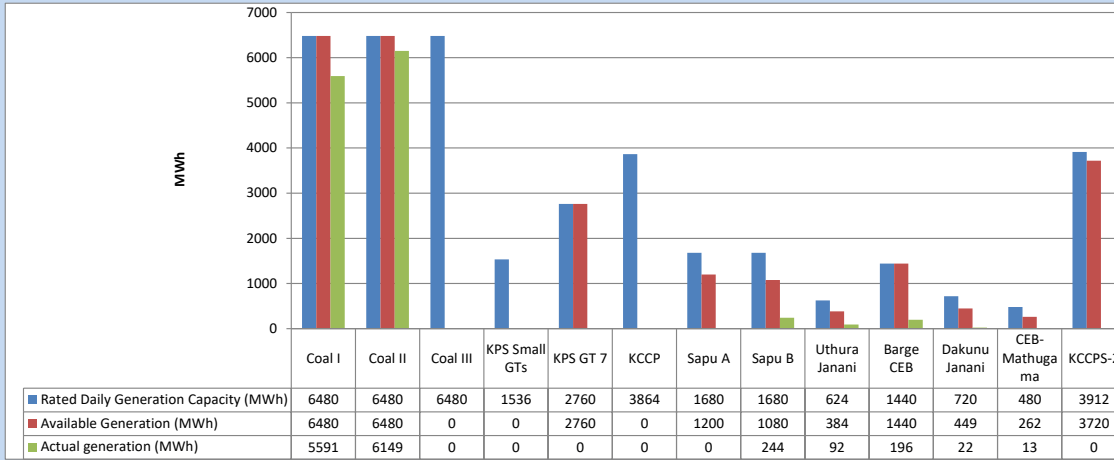
Category	Dispatch (GWh)	
CEB Hydro	237	41.19%
CEB Coal	191	33.26%
CEB Thermal Oil	53	9.24%
IPP Thermal	15	2.63%
SPP Wind	19	3.33%
CEB Wind	22	3.77%
Mini Hydro (Telemetered)	29	5.12%
IPP Solar(Bulk-10MW)	4	0.74%
IPP Waste heat + BMP	4	0.71%
Total	575	

Table 04 - Current Year

Category	Dispatch (GWh)	
CEB Hydro	2,803	25.16%
CEB Coal	4,111	36.90%
CEB Thermal Oil	1,947	17.48%
IPP Thermal	1,110	9.96%
SPP Wind	344	3.09%
CEB Wind	353	3.17%
Mini Hydro (Telemetered)	281	2.52%
IPP Solar(Bulk-10MW)	87	0.78%
IPP Waste heat	103	0.93%
Total	11,139	

3. CEB owned Thermal Plant Dispatch

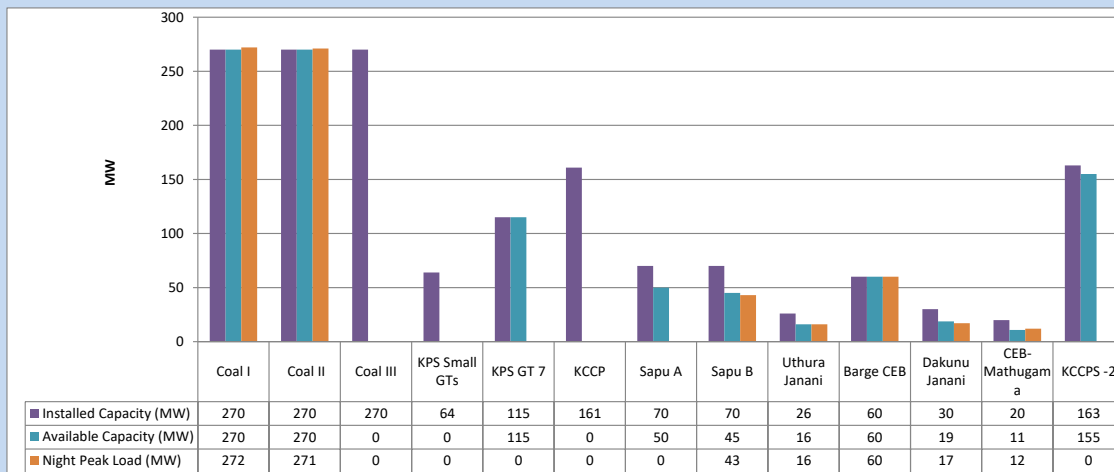
October 16, 2023



Available Generation is estimated based on plant availability at 6.00am on

October 17, 2023

4. CEB owned Thermal Plant Loading at the Night Peak

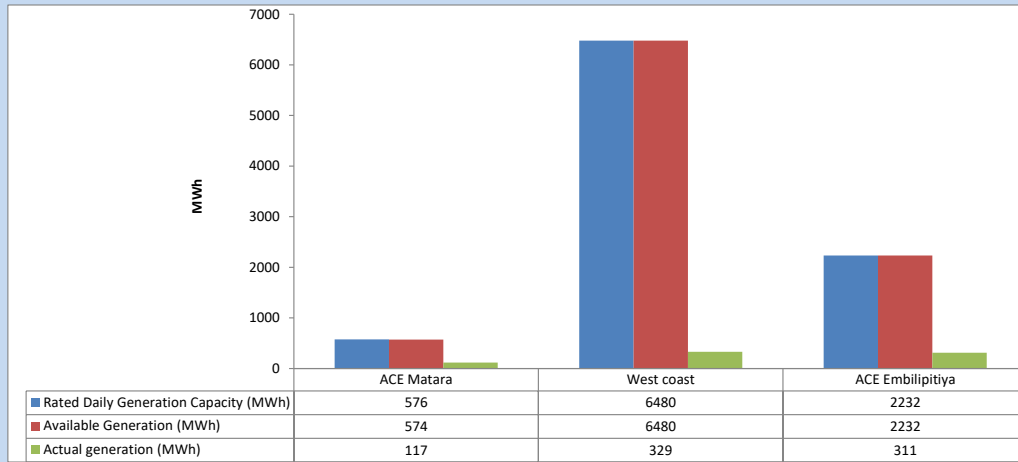


Plant availability is recorded at 6.00 am on

October 17, 2023

5. IPP owned Thermal Plant Dispatch

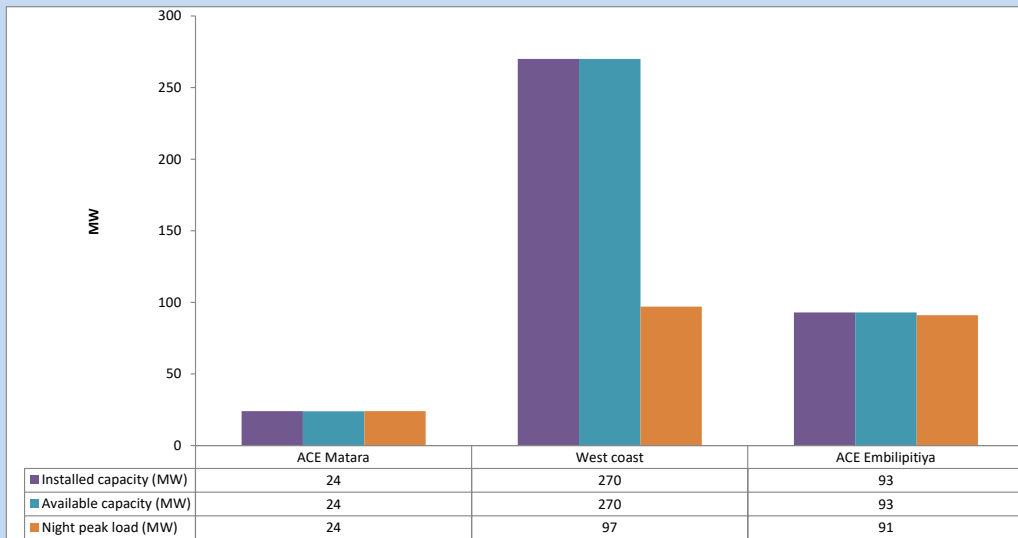
October 16, 2023



Available Generation is estimated based on plant availability at 6.00am on

October 17, 2023

6. IPP owned Thermal Plant Loading at the Night Peak

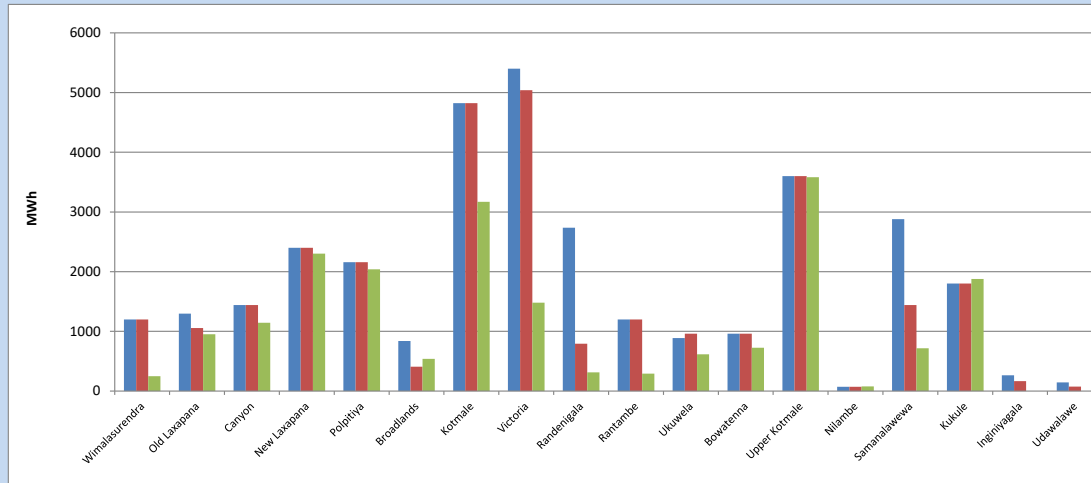


Plant availability is recorded at 6.00 am on

October 17, 2023

7. Major Hydro Plant Dispatch

October 16, 2023

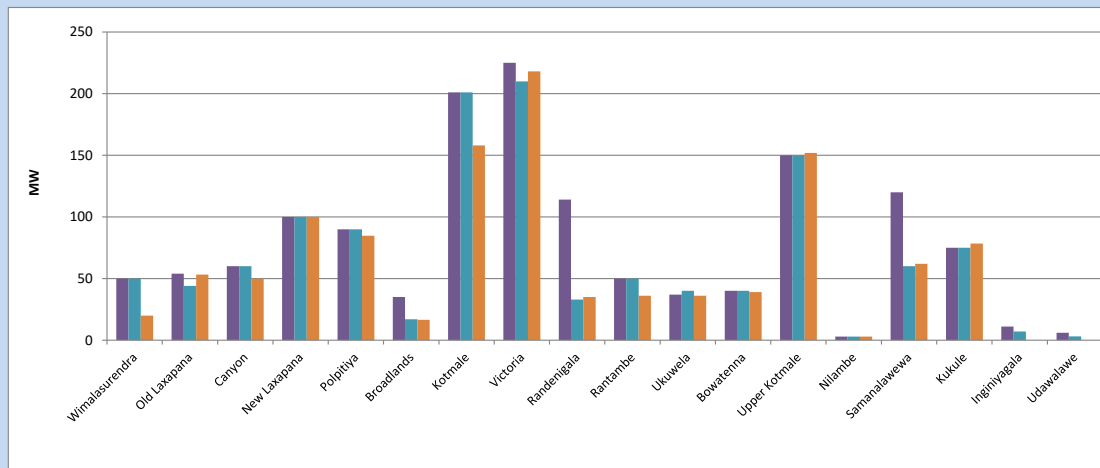


Available Generation is estimated based on plant availability at 6.00am on October 17, 2023
Broadlands power plant is operating in the Commissioning Stage

October 17, 2023

8. Major Hydro Plant Loading at Night Peak

October 16, 2023



Plant availability is recorded at 6.00 am on October 17, 2023
Broadlands power plant is operating in the Commissioning Stage

October 17, 2023

9. Summary of Major Plant performance

Table 05

Plant	Installed Capacity (MW)	Plant Availability (MW)	Night peak Load (MW)	Plant Dispatch (MWh)
Wimalasurendra	50	50	20	249
Old Laxapana	54	44	53	951
Canyon	60	60	50	1,145
New Laxapana	100	100	100	2,302
Polpitiya	90	90	85	2,040
Broadlands	35	17	17	540
Kotmale	201	201	158	3,170
Victoria	225	210	218	1,481
Randenigala	114	33	35	313
Rantambe	50	50	36	292
Ukuwela	37	40	36	617
Bowatenna	40	40	39	725
Upper Kotmale	150	150	152	3,581
Nilambe	3	3	3	78
Samanalawewa	120	60	62	716
Kukule	75	75	78	1,879
Inginiyagala	11	7	0	0
Udawalawe	6	3	0	0
Puttalam Coal I	270	270	272	5,591
Puttalam Coal II	270	270	271	6,149
Puttalam Coal III	270	0	0	0
KPS Small GTs	64	0	0	0
KPS GT 7	115	115	0	0
KCCP	161	0	0	0
Sapugaskanda A	70	50	0	0
Sapugaskanda B	70	45	43	244
Uthura Janani	26	16	16	92
Barge CEB	60	60	60	196
CEB-Hambantota	30	19	17	22
CEB-Mathugama	20	11	12	13
ACE Matara	24	24	24	117
Asia Power	50	0	0	0
KCCPS -2	163	155	0	0
West Coast	270	270	97	329
Nothern Power	36	0	0	0
ACE Embilipitiya	93	93	91	311
Total	3,483	2,631	2,133	36,685

Plant availability is the availability recorded at 6 am on

October 17, 2023

10. Contribution to the Night Peak in MW

October 16, 2023

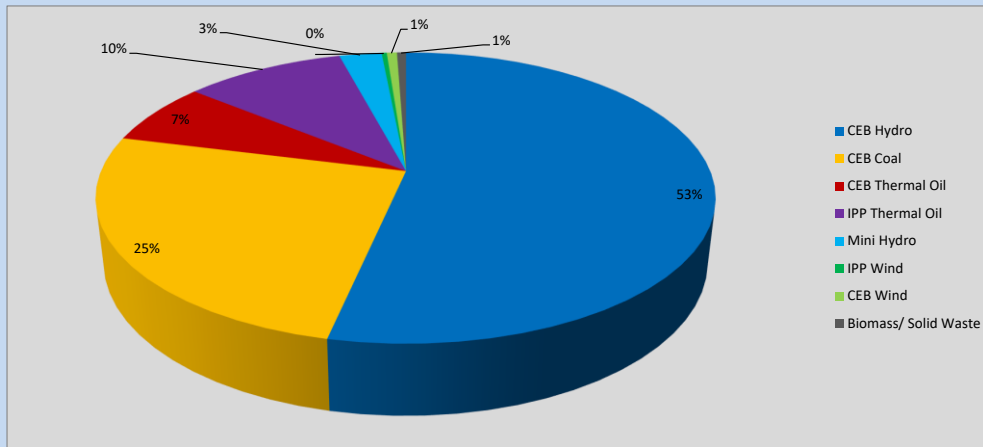


Table 06

CEB Hydro	1136	MW
CEB Coal	543	MW
CEB Thermal Oil	148	MW
IPP Thermal Oil	212	MW
Mini Hydro (Telemetered)	56	MW
IPP Wind	6.8	MW
CEB Wind	13.5	MW
Biomass/ Solid Waste	12	MW

Recorded Peak Demand Data

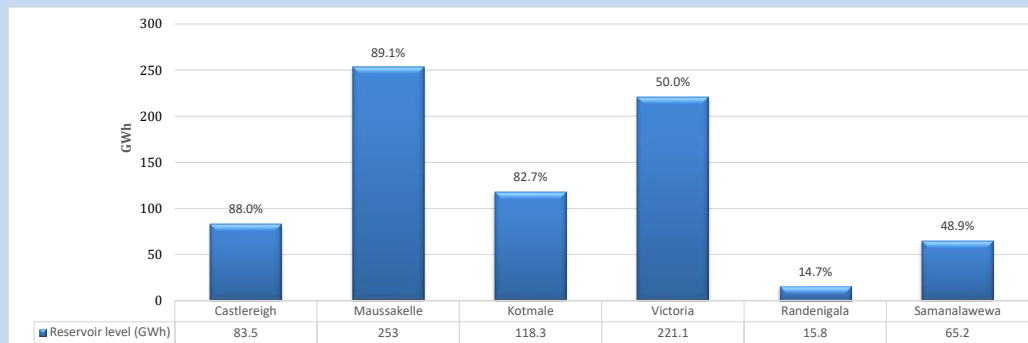
Table 07

Night Peak*	2,127	MW
Day Peak Maximum Demand	1,852	MW
Day Peak Minimum Demand	1,463	MW
Off Peak Minimum Demand	983	MW

Above figures are excluding contribution from roof top solar, non telemetered solar and mini hydro plants

Reservoir Levels -

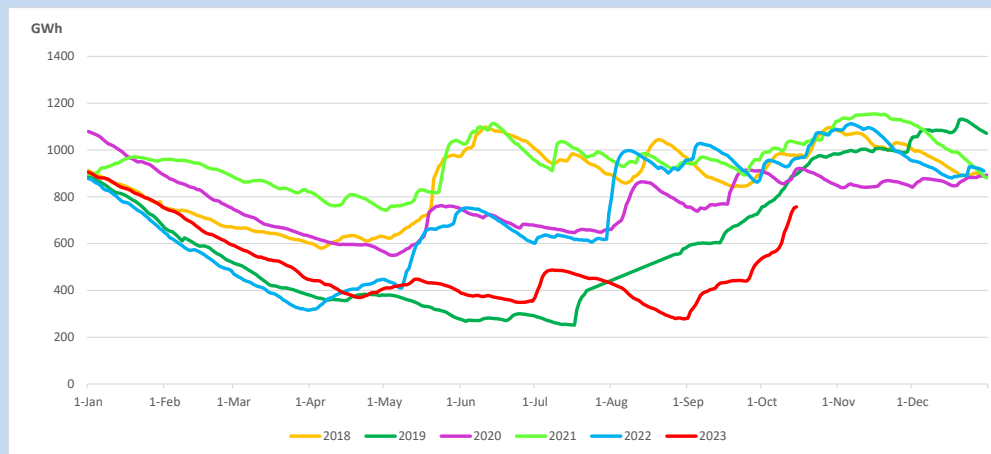
as at 06.00 Hr on October 17, 2023



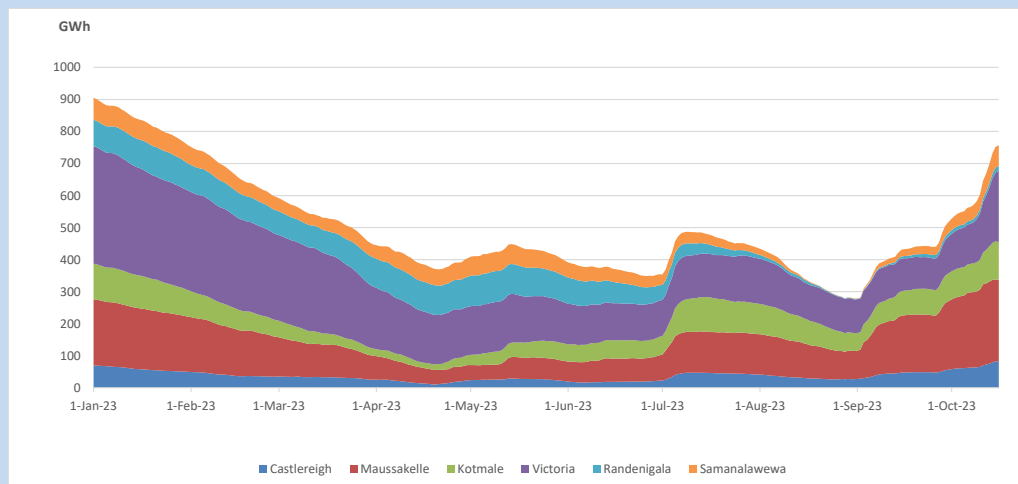
Total Reservoir Level
% of Total capacity

756.9 GWh
62.8%

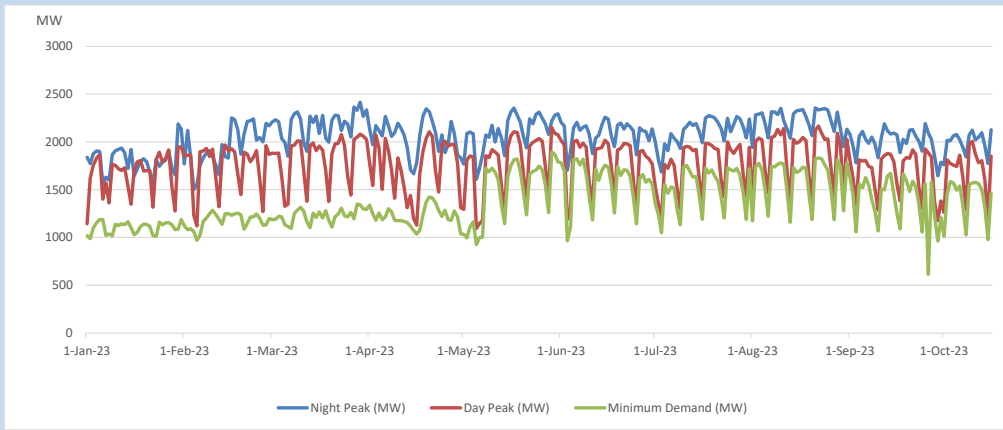
11. Comparison of Total Reservoir Storage Levels with Past Years



12. Variation of Major Hydro Reservoir Levels in the current year (GWh)



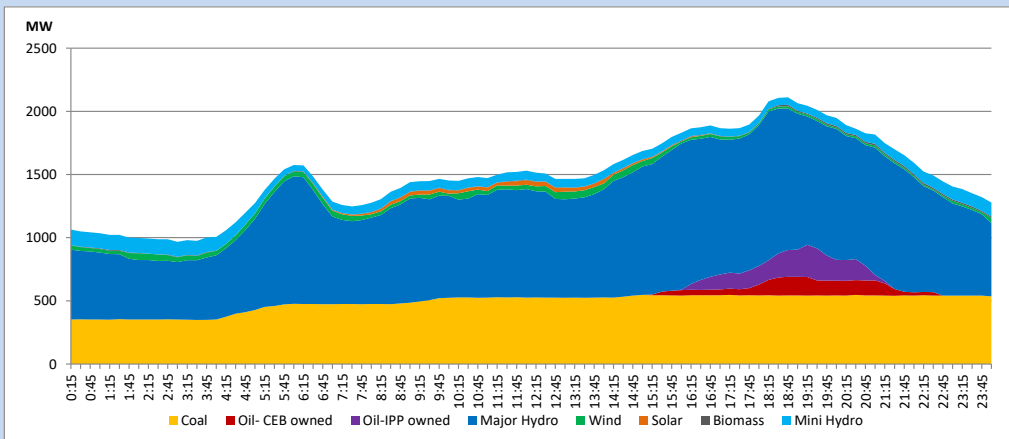
13. Variation of Demand during the current year



The above figures are excluding contribution from roof top solar, non telemetered solar and mini hydro plants

14. Daily Load Curve

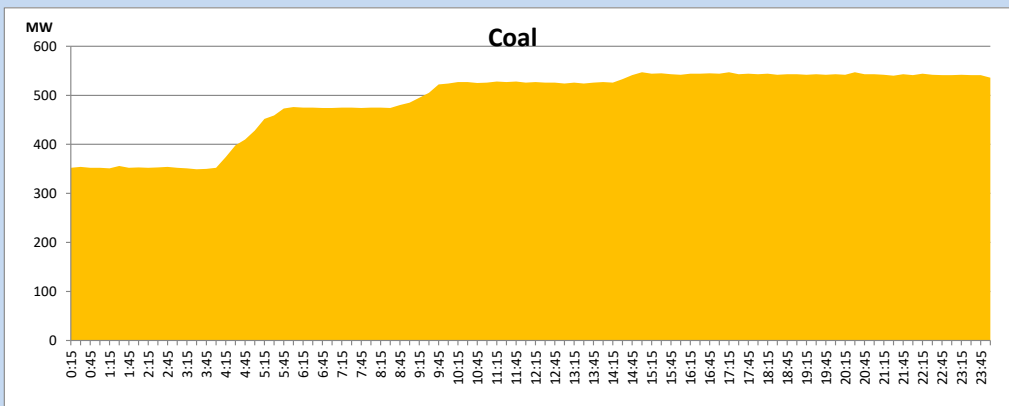
October 16, 2023



Solar and wind data is based on Telemetered Power Stations only

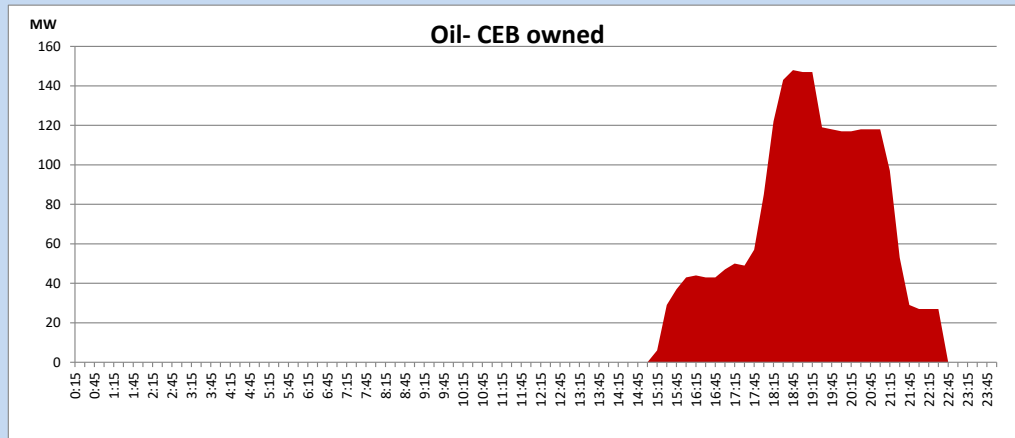
Coal Generation during

October 16, 2023



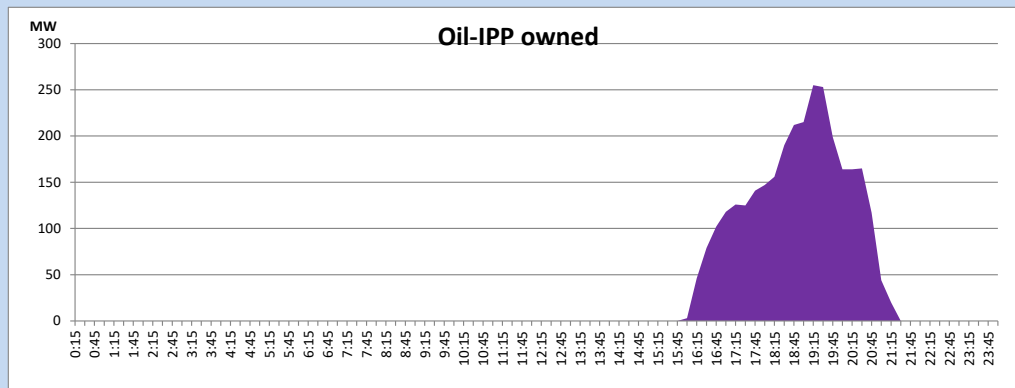
CEB Oil Plant Generation during

October 16, 2023



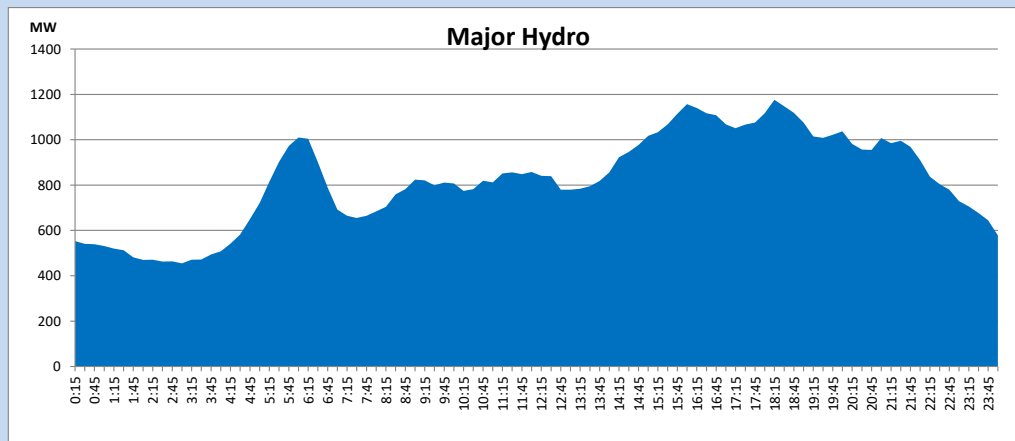
IPP Oil Plant Generation during

October 16, 2023



Major Hydro Generation during

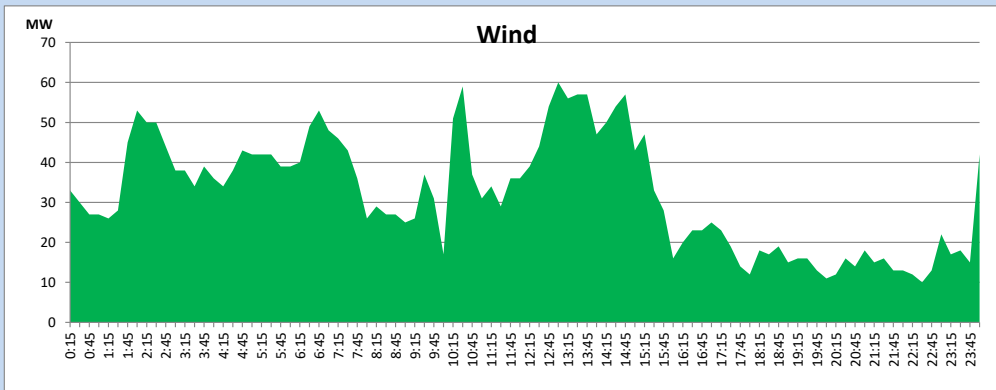
October 16, 2023



Wind Generation during

October 16, 2023

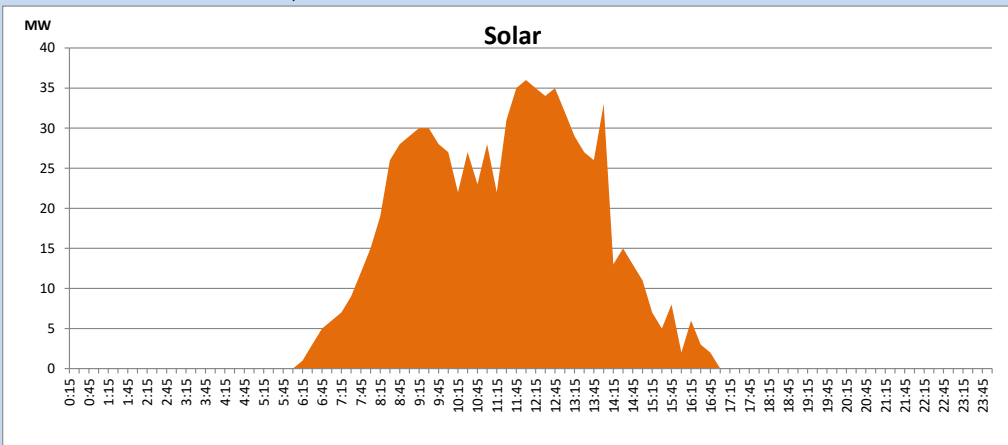
Based on Telemetered Power Stations only



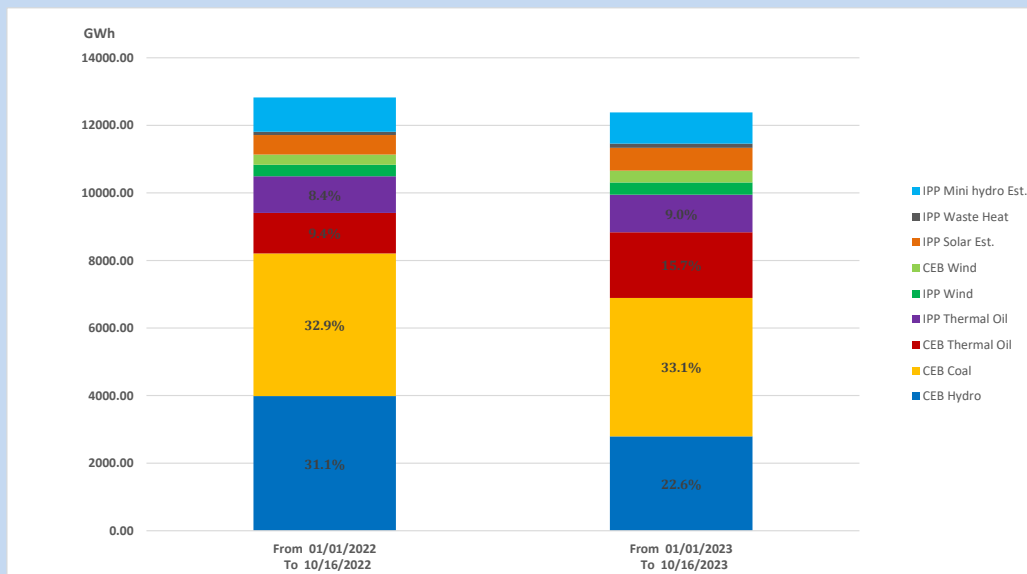
Solar Generation during

October 16, 2023

Based on Telemetered Power Stations only



15. Cumulative Dispatch Comparison with Last Year



Cumulative dispatch
From 01/01/2022 To 10/16/2022

12827 GWh

From 01/01/2023 To 10/16/2023

12380 GWh

The above figures are including contribution from roof top solar, non telemetered solar and mini hydro plants (figures have been adjusted based on the data from the CEB monthly review reports.)

Thermal Plant Fuel types

Table 08

Power Station	Primary Fuel
CEB Thermal	
Sapugaskanda 1	Heavy Fuel
Sapugaskanda 2	Heavy Fuel
Kelanitissa Small Gas Turbines	Auto Diesel
GT 7 - Kelanitissa	Auto Diesel
Kelanitissa CCY	Naphtha or Diesel
Lakvijaya 1	Coal
Lakvijaya 2	Coal
Lakvijaya 3	Coal
Uthuru Janani	Heavy Fuel
Barge CEB	Heavy Fuel
KCCPS -2	Auto Diesel

Power Station	Primary Fuel
Private Thermal	
West Coast	Auto Diesel / Heavy Fuel
ACE Matara	Heavy Fuel
ACE Embilipitiya	Heavy Fuel

Major Incidents reported during the day

October 16, 2023

- 1) Upper Kotmale unit 01 made a forced shutdown at 14:46hrs due to the turbine bearing oil level high alarm. The unit resumed generation at 15:19hrs.
- 2) Power Barge all generators made unavailable at 16:27hrs due to a main steam line leak. Power Barge generators resumed generation at 17:38hrs.
- 3) Horana 132/33kV T/F 03 tripped from both sides at 23:37hrs due to the operation of Pressure Relief Valve. The T/F is yet to be normalized.
- 4) Laxapana and Broadlands ponds spilling started at 08:30hrs and 12:15hrs respectively. Laxapana pond, spilling stopped at 05:15hrs(17.10.2023) and Broadlands pond spilling continues to the present hour.