

Generation and Reservoirs Statistics

October 13, 2023



PUBLIC UTILITIES COMMISSION OF SRI LANKA

1. Daily Generation Mix in MWh

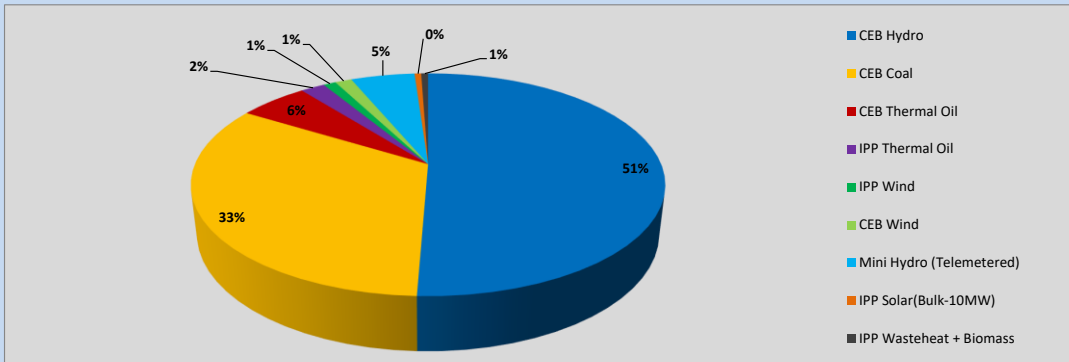


Table 01

	Generation (MWh)
CEB Hydro	19,038
CEB Coal	12,442
CEB Thermal Oil	2,116
IPP Thermal Oil	742
IPP Wind	384
CEB Wind	511
Mini Hydro (Telemetered)	1,959
IPP Solar (Bulk)	204
IPP Waste heat + Biomass	211
Total Generation (Excluding estimated figures)	37,607
* Estimated unserved energy	0
* Estimated Mini Hydro (Non telemetered)	2901
* Estimated IPP Solar PV (Bulk 1-10MW)	304
* Estimated Solar Roof Top PV	1930
Total Generation (Including estimated figures)	42,742

* Estimated figures of CEB generation report

Table 02

	Installed Capacity (MW)
CEB Hydro	1409
CEB Coal	810
CEB Thermal Oil	781
IPP Thermal Oil (West Coast, ACE Matara and ACE Embilipitiya)	387
IPP Wind	148
CEB Wind	100
Mini Hydro	416
IPP Waste heat + Biomass	50
IPP Solar	130
Rooftop Solar* (Ordinary)	267
Rooftop Solar* (LT Bulk)	256
Rooftop Solar* (HT Bulk)	61

Data Source - Monthly Review Report [May-2023]

2. Cumulative Dispatch

Following data excludes the contribution from roof top solar, non telemetered solar and mini hydro plants

Table 03 - Current Month

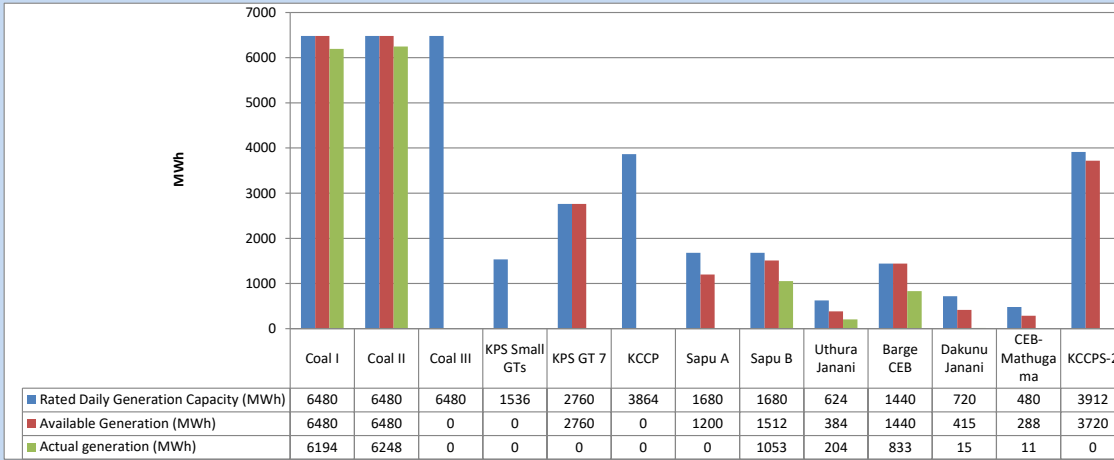
Category	Dispatch (GWh)	
CEB Hydro	183	38.52%
CEB Coal	158	33.26%
CEB Thermal Oil	52	10.91%
IPP Thermal	14	2.95%
SPP Wind	18	3.74%
CEB Wind	20	4.22%
Mini Hydro (Telemetered)	24	5.01%
IPP Solar(Bulk-10MW)	3	0.68%
IPP Waste heat + BMP	3	0.72%
Total	474	

Table 04 - Current Year

Category	Dispatch (GWh)	
CEB Hydro	2,748	24.90%
CEB Coal	4,077	36.94%
CEB Thermal Oil	1,945	17.62%
IPP Thermal	1,109	10.04%
SPP Wind	343	3.11%
CEB Wind	352	3.19%
Mini Hydro (Telemetered)	275	2.49%
IPP Solar(Bulk-10MW)	86	0.78%
IPP Waste heat	103	0.93%
Total	11,038	

3. CEB owned Thermal Plant Dispatch

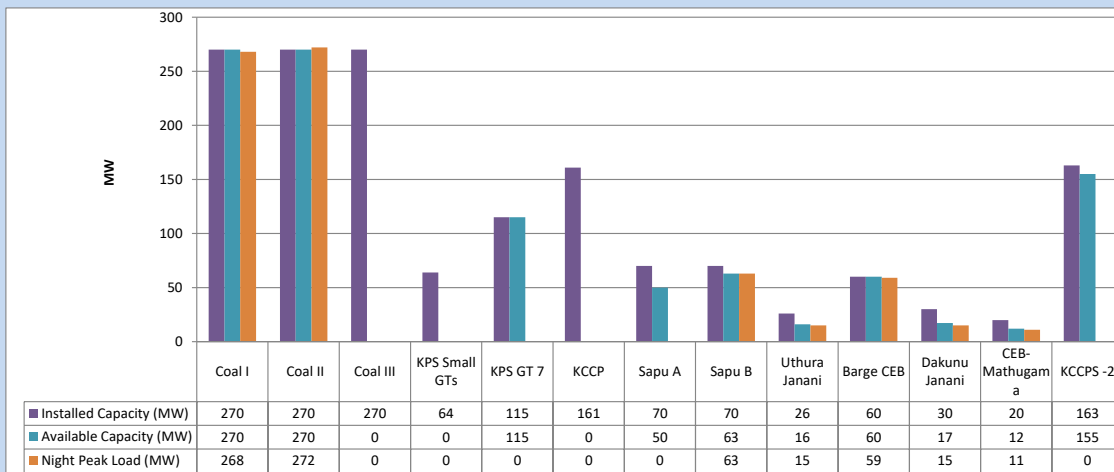
October 13, 2023



Available Generation is estimated based on plant availability at 6.00am on

October 14, 2023

4. CEB owned Thermal Plant Loading at the Night Peak

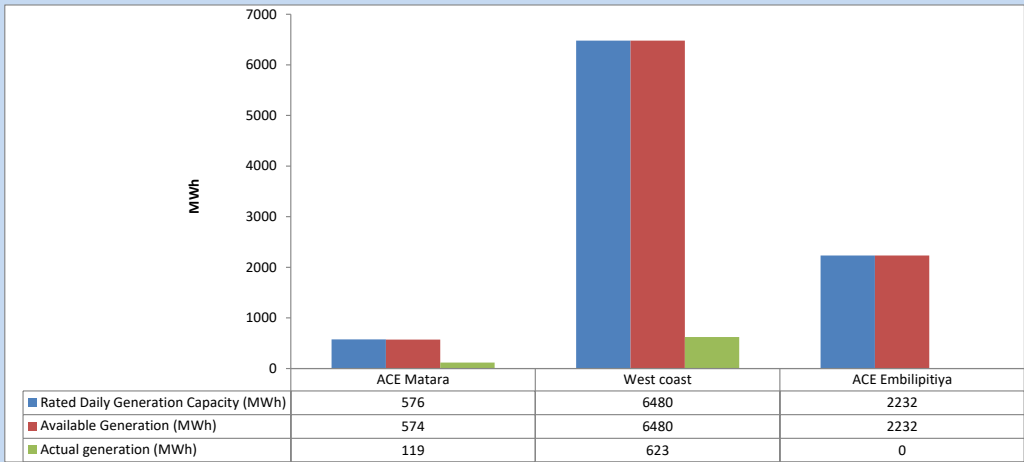


Plant availability is recorded at 6.00 am on

October 14, 2023

5. IPP owned Thermal Plant Dispatch

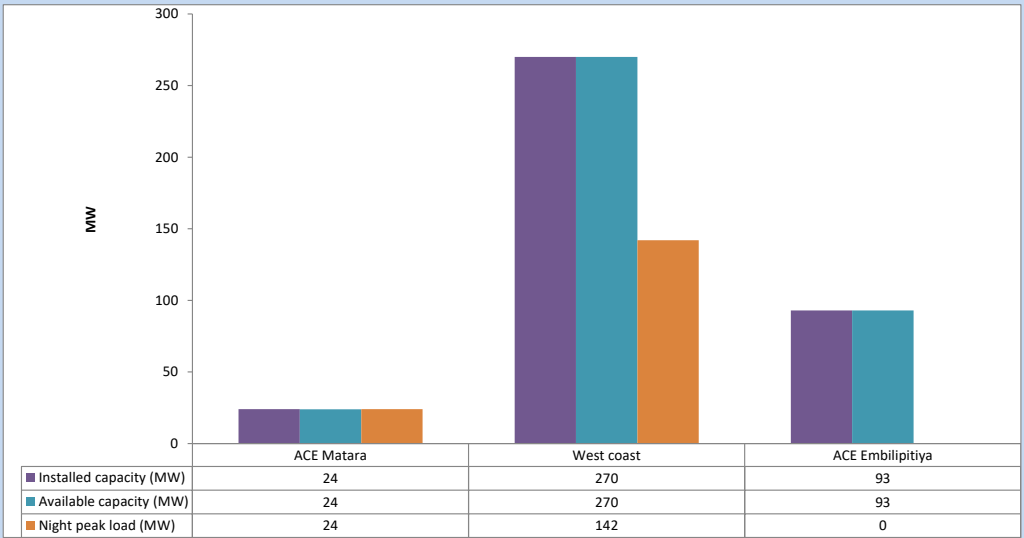
October 13, 2023



Available Generation is estimated based on plant availability at 6.00am on

October 14, 2023

6. IPP owned Thermal Plant Loading at the Night Peak

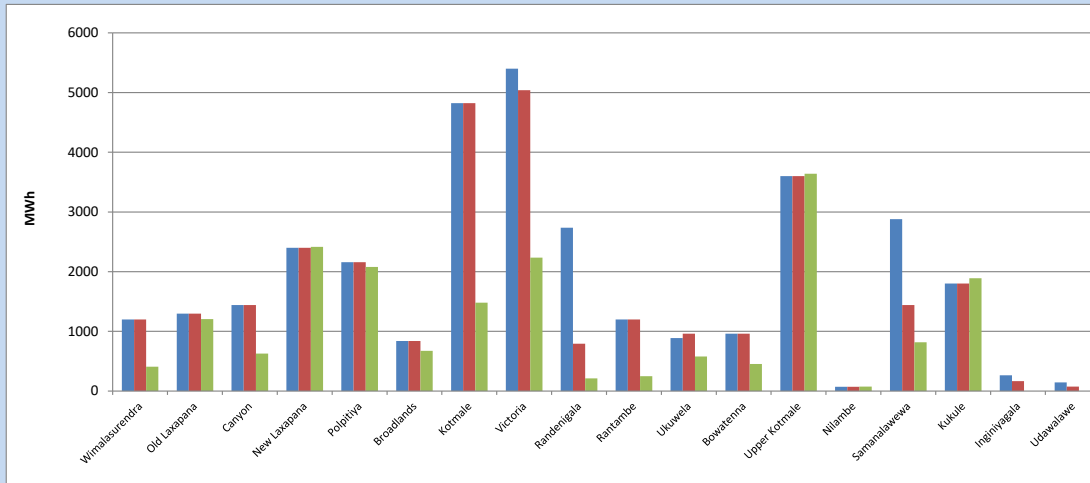


Plant availability is recorded at 6.00 am on

October 14, 2023

7. Major Hydro Plant Dispatch

October 13, 2023

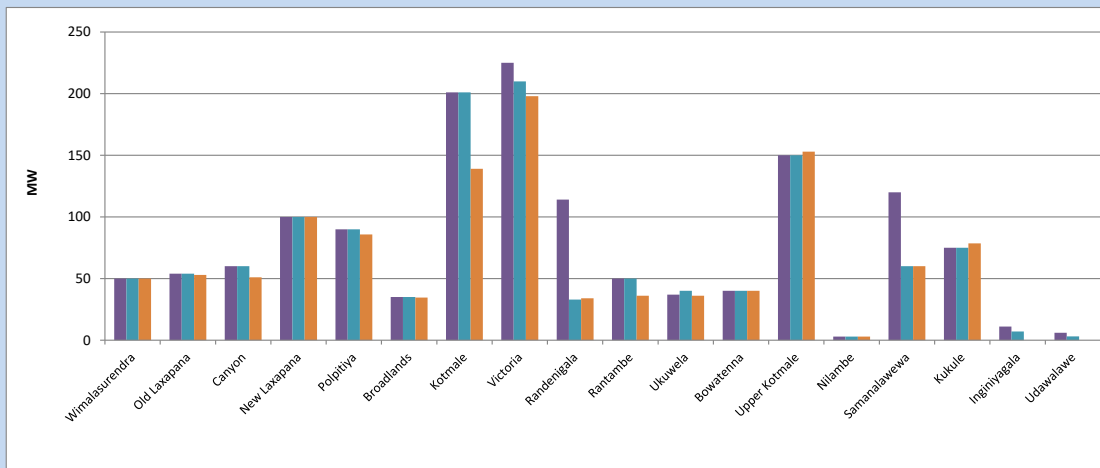


Available Generation is estimated based on plant availability at 6.00am on October 14, 2023
Broadlands power plant is operating in the Commissioning Stage

October 14, 2023

8. Major Hydro Plant Loading at Night Peak

October 13, 2023



Plant availability is recorded at 6.00 am on October 14, 2023
Broadlands power plant is operating in the Commissioning Stage

October 14, 2023

9. Summary of Major Plant performance

Table 05

Plant	Installed Capacity	Plant Availability	Night peak Load	Plant Dispatch
	(MW)	(MW)	(MW)	(MWh)
Wimalasurendra	50	50	50	409
Old Laxapana Canyon	54	54	53	1,204
New Laxapana	60	60	51	627
Polpitiya	100	100	100	2,415
Broadlands	90	90	86	2,080
Kotmale	35	35	35	674
Victoria	201	201	139	1,480
Randenigala	225	210	198	2,236
Rantambe	114	33	34	211
Ukuwela	50	50	36	250
Bowatenna	37	40	36	578
Upper Kotmale	40	40	40	454
Nilambe	150	150	153	3,641
Samanalawewa	3	3	3	74
Kukule	120	60	60	816
Inginiyagala	75	75	79	1,889
Udawalawe	11	7	0	0
Puttalam Coal I	6	3	0	0
Puttalam Coal II	270	270	268	6,194
Puttalam Coal III	270	270	272	6,248
KPS Small GTs	270	0	0	0
KPS GT 7	64	0	0	0
KCCP	115	115	0	0
Sapugaskanda A	161	0	0	0
Sapugaskanda B	70	50	0	0
Uthura Janani	70	63	63	1,053
Barge CEB	26	16	15	204
CEB-Hambantota	60	60	59	833
CEB-Mathugama	30	17	15	15
ACE Matara	20	12	11	11
Asia Power	24	24	24	119
KCCPS -2	50	0	0	0
West Coast	163	155	0	0
Nothern Power	270	270	142	623
ACE Embilipitiya	36	0	0	0
Total	93	93	0	0
	3,483	2,676	2,115	37,607

Plant availability is the availability recorded at 6 am on

October 14, 2023

10. Contribution to the Night Peak in MW

October 13, 2023

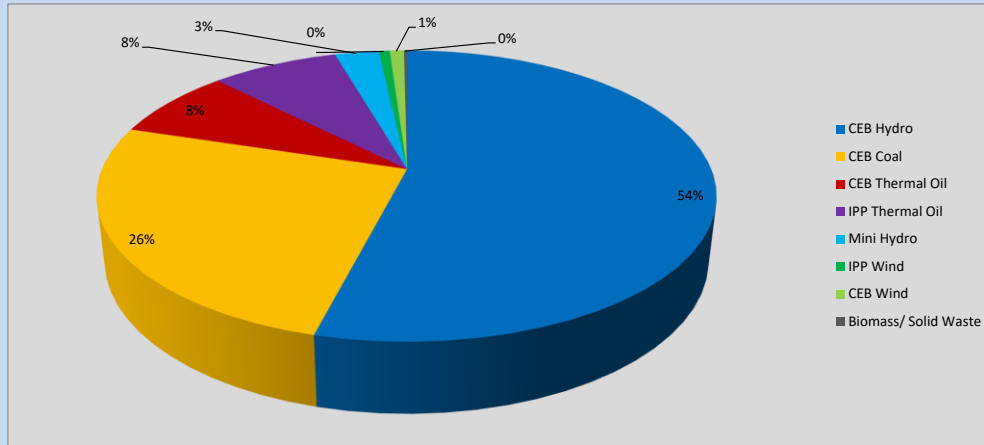


Table 06

CEB Hydro	1132	MW
CEB Coal	540	MW
CEB Thermal Oil	163	MW
IPP Thermal Oil	166	MW
Mini Hydro (Telemetered)	57	MW
IPP Wind	14.5	MW
CEB Wind	18.6	MW
Biomass/ Solid Waste	4	MW

Recorded Peak Demand Data

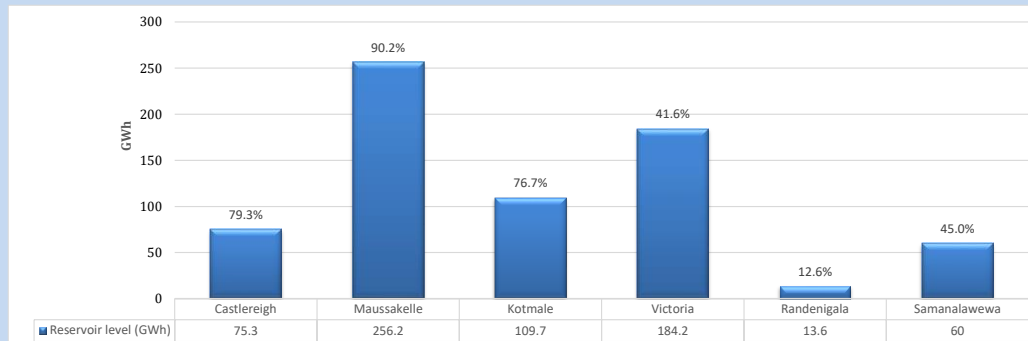
Table 07

Night Peak*	2,095	MW
Day Peak Maximum Demand	1,805	MW
Day Peak Minimum Demand	1,502	MW
Off Peak Minimum Demand	1,128	MW

Above figures are excluding contribution from roof top solar, non telemetered solar and mini hydro plants

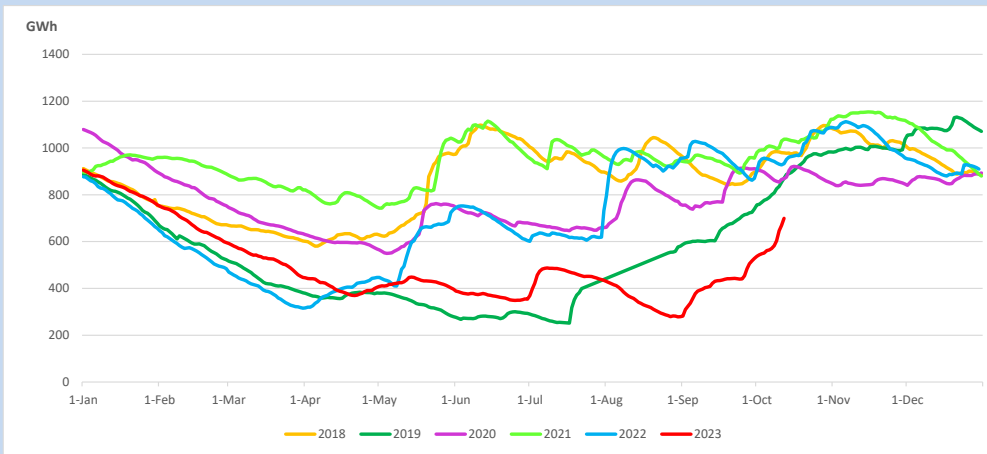
Reservoir Levels -

as at 06.00 Hr on October 14, 2023

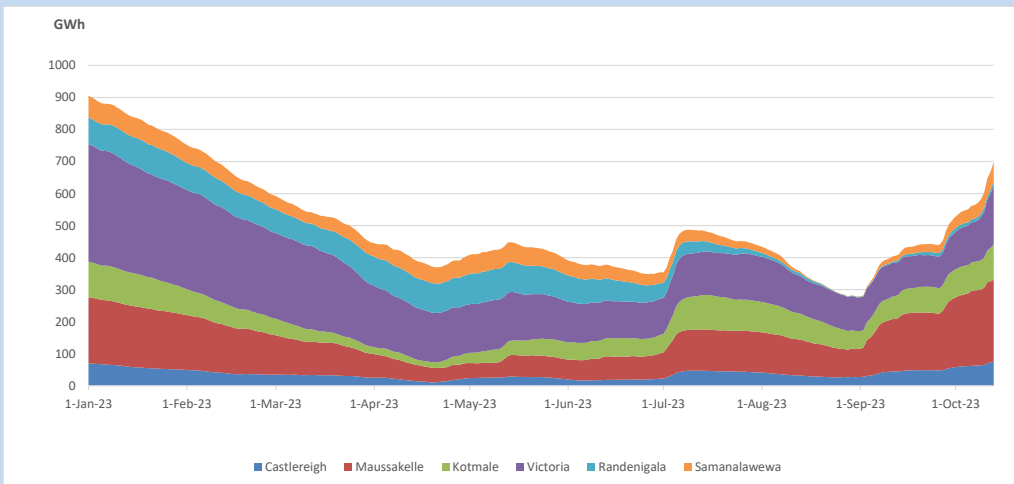


Total Reservoir Level 699 GWh
 % of Total capacity 58.0%

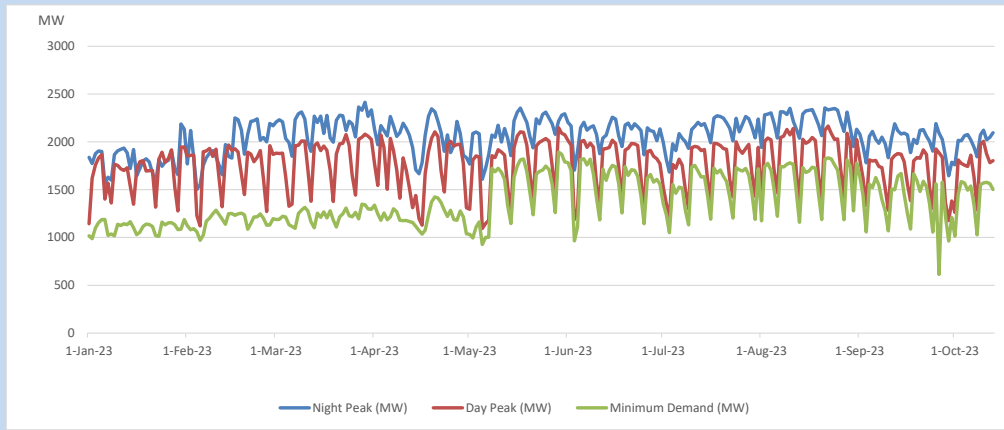
11. Comparison of Total Reservoir Storage Levels with Past Years



12. Variation of Major Hydro Reservoir Levels in the current year (GWh)



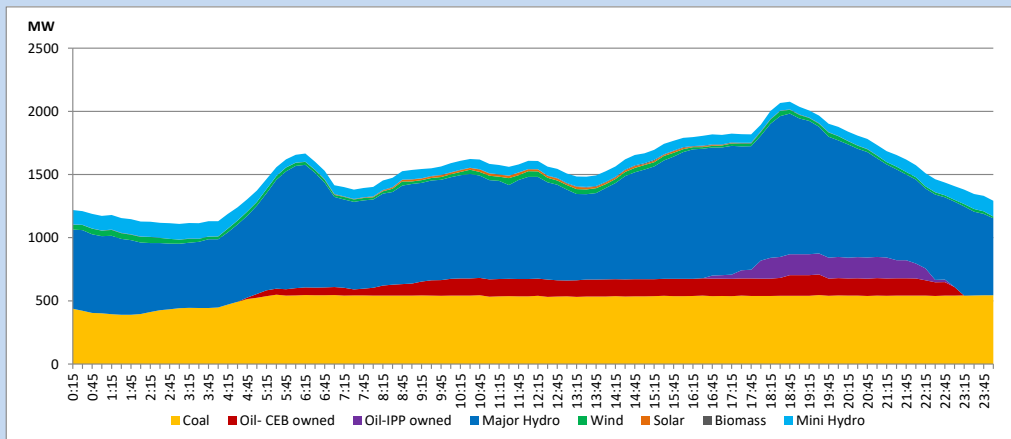
13. Variation of Demand during the current year



The above figures are excluding contribution from roof top solar, non telemetered solar and mini hydro plants

14. Daily Load Curve

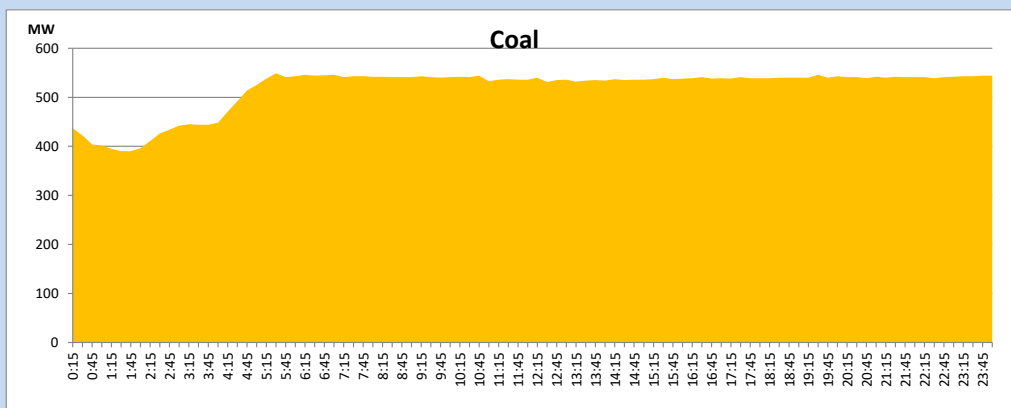
October 13, 2023



Solar and wind data is based on Telemetered Power Stations only

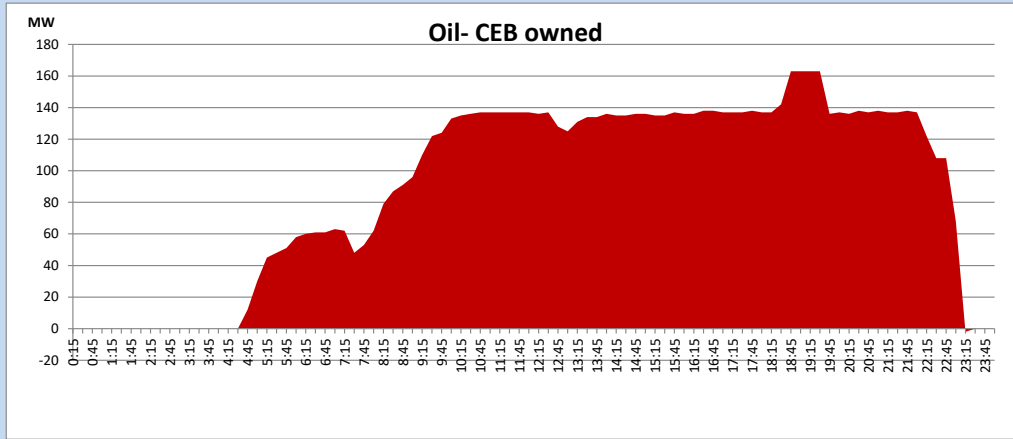
Coal Generation during

October 13, 2023



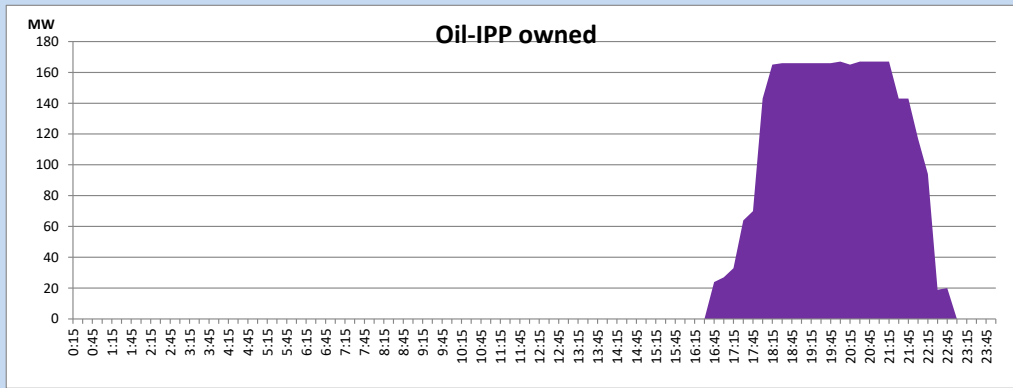
CEB Oil Plant Generation during

October 13, 2023



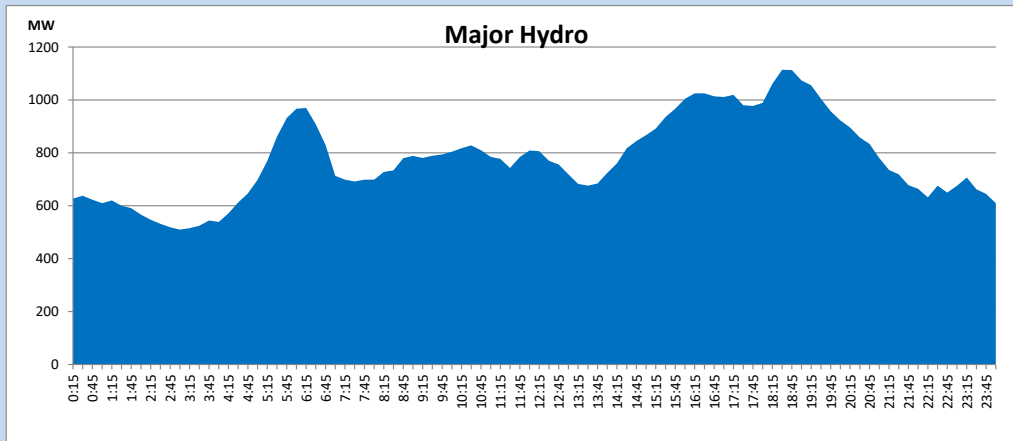
IPP Oil Plant Generation during

October 13, 2023



Major Hydro Generation during

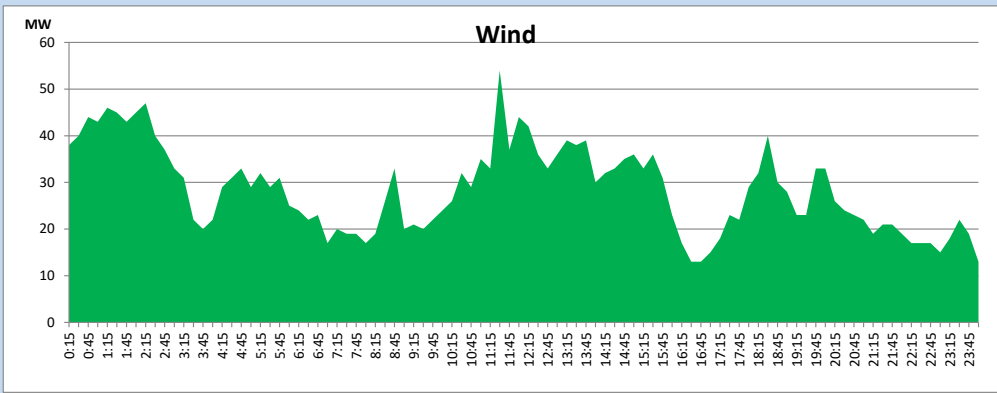
October 13, 2023



Wind Generation during

October 13, 2023

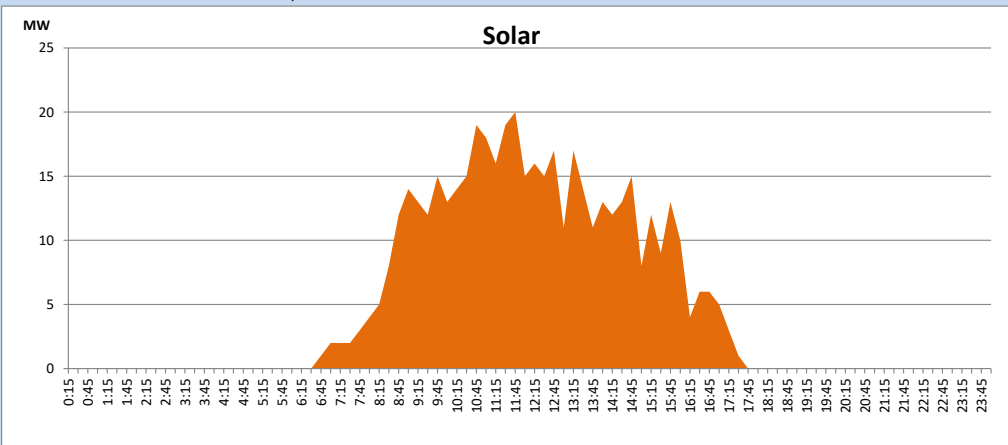
Based on Telemetered Power Stations only



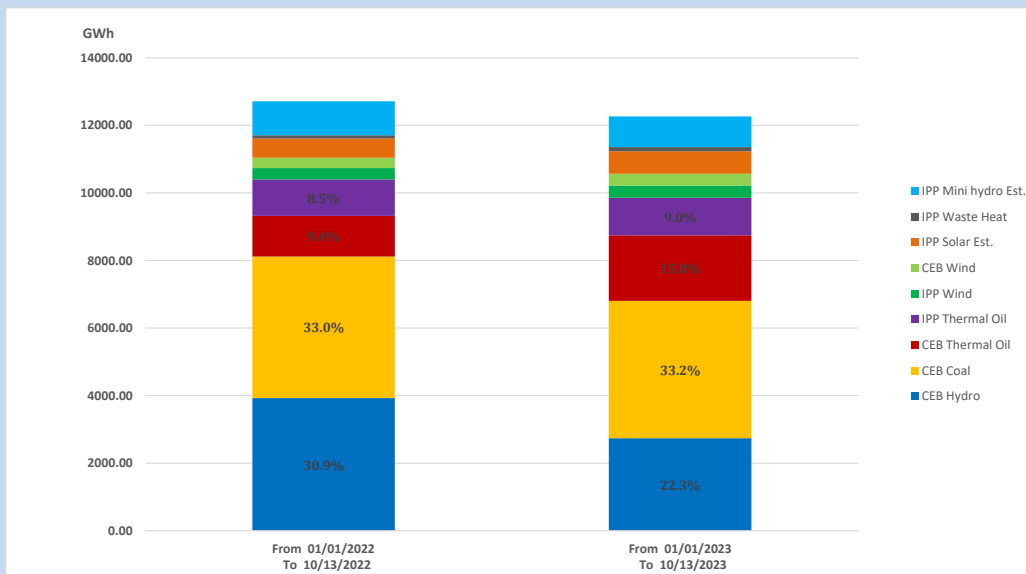
Solar Generation during

October 13, 2023

Based on Telemetered Power Stations only



15. Cumulative Dispatch Comparison with Last Year



Cumulative dispatch

From 01/01/2022 To 10/13/2022

12710 GWh

From 01/01/2023 To 10/13/2023

12264 GWh

The above figures are including contribution from roof top solar, non telemetered solar and mini hydro plants (figures have been adjusted based on the data from the CEB monthly review reports.)

Thermal Plant Fuel types

Table 08

Power Station	Primary Fuel
CEB Thermal	
Sapugaskanda 1	Heavy Fuel
Sapugaskanda 2	Heavy Fuel
Kelanitissa Small Gas Turbines	Auto Diesel
GT 7 - Kelanitissa	Auto Diesel
Kelanitissa CCY	Naphtha or Diesel
Lakvijaya 1	Coal
Lakvijaya 2	Coal
Lakvijaya 3	Coal
Uthuru Janani	Heavy Fuel
Barge CEB	Heavy Fuel
KCCPS -2	Auto Diesel

Power Station	Primary Fuel
Private Thermal	
West Coast	Auto Diesel / Heavy Fuel
ACE Matara	Heavy Fuel
ACE Embilipitiya	Heavy Fuel

Major Incidents reported during the day

October 13, 2023

- 1). Laxapana pond spilled intermittently and spilling stopped at 22:57hrs
- 2). Upper Kotmale pond spilling stopped at 15:00hrs. Upper Kotmale pond spilling started again at 22:39hrs and spilling continues to the present hour.
- 3). Kukule pond spilling stopped at 10:25hrs. Kukule spilling started again at 05:17hrs (14.10.2023) and continues to the present hour