

Generation and Reservoirs Statistics

October 12, 2023



PUBLIC UTILITIES COMMISSION OF SRI LANKA

1. Daily Generation Mix in MWh

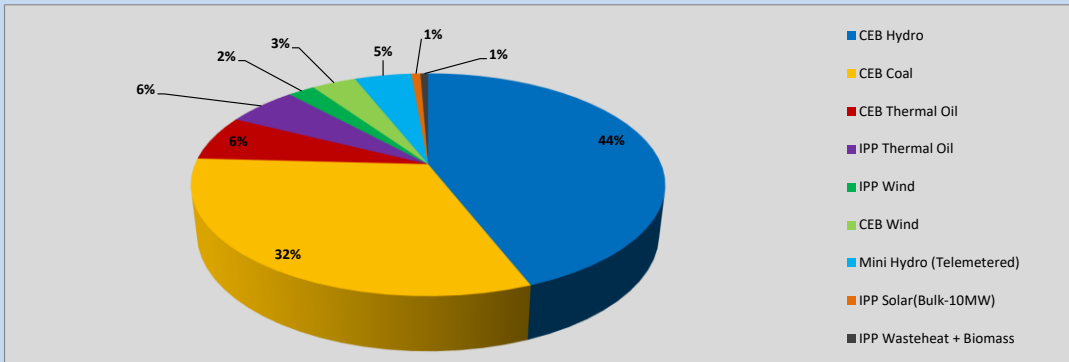


Table 01

	Generation (MWh)
CEB Hydro	16,550
CEB Coal	11,933
CEB Thermal Oil	2,469
IPP Thermal Oil	2,160
IPP Wind	828
CEB Wind	1,358
Mini Hydro (Telemetered)	1,740
IPP Solar (Bulk)	282
IPP Waste heat + Biomass	234
Total Generation (Excluding estimated figures)	37,554
* Estimated unserved energy	0
* Estimated Mini Hydro (Non telemetered)	3120
* Estimated IPP Solar PV (Bulk 1-10MW)	304
* Estimated Solar Roof Top PV	1930
Total Generation (Including estimated figures)	42,908

* Estimated figures of CEB generation report

Table 02

	Installed Capacity (MW)
CEB Hydro	1409
CEB Coal	810
CEB Thermal Oil	781
IPP Thermal Oil (West Coast, ACE Matara and ACE Embilipitiya)	387
IPP Wind	148
CEB Wind	100
Mini Hydro	416
IPP Waste heat + Biomass	50
IPP Solar	130
Rooftop Solar* (Ordinary)	267
Rooftop Solar* (LT Bulk)	256
Rooftop Solar* (HT Bulk)	61

Data Source - Monthly Review Report [May-2023]

2. Cumulative Dispatch

Following data excludes the contribution from roof top solar, non telemetered solar and mini hydro plants

Table 03 - Current Month

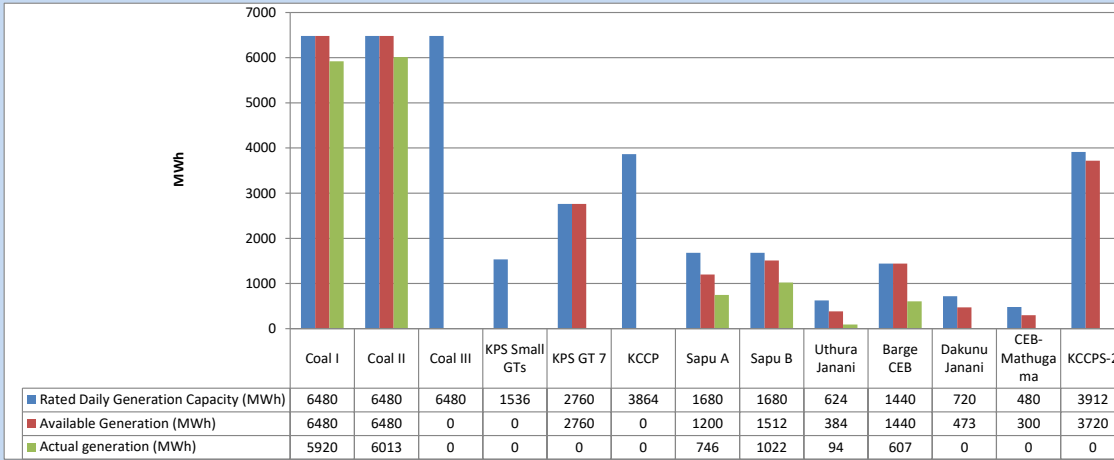
Category	Dispatch (GWh)	
CEB Hydro	164	37.48%
CEB Coal	145	33.28%
CEB Thermal Oil	50	11.36%
IPP Thermal	13	3.03%
SPP Wind	17	3.97%
CEB Wind	19	4.47%
Mini Hydro (Telemetered)	22	4.99%
IPP Solar(Bulk-10MW)	3	0.69%
IPP Waste heat + BMP	3	0.73%
Total	436	

Table 04 - Current Year

Category	Dispatch (GWh)	
CEB Hydro	2,729	24.81%
CEB Coal	4,064	36.95%
CEB Thermal Oil	1,943	17.67%
IPP Thermal	1,108	10.07%
SPP Wind	343	3.11%
CEB Wind	351	3.19%
Mini Hydro (Telemetered)	273	2.49%
IPP Solar(Bulk-10MW)	85	0.78%
IPP Waste heat	103	0.93%
Total	11,000	

3. CEB owned Thermal Plant Dispatch

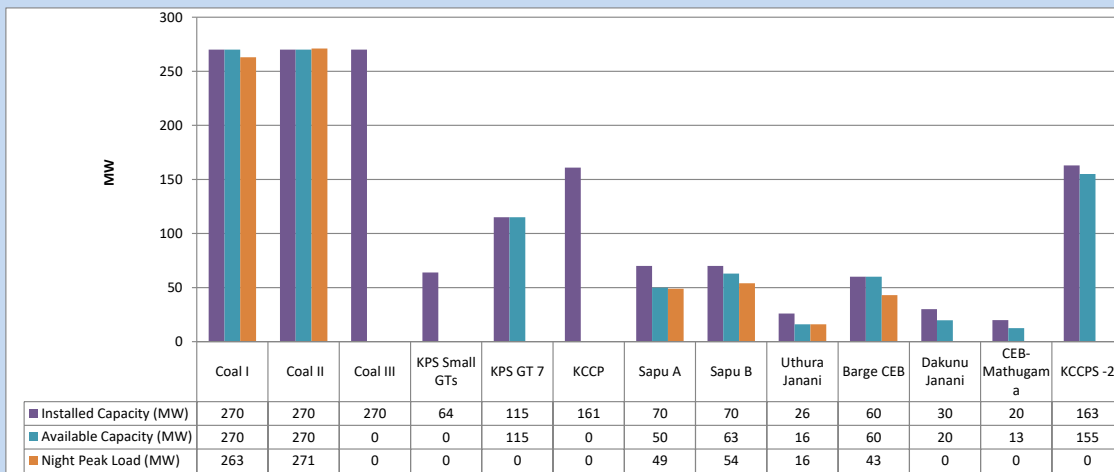
October 12, 2023



Available Generation is estimated based on plant availability at 6.00am on

October 13, 2023

4. CEB owned Thermal Plant Loading at the Night Peak

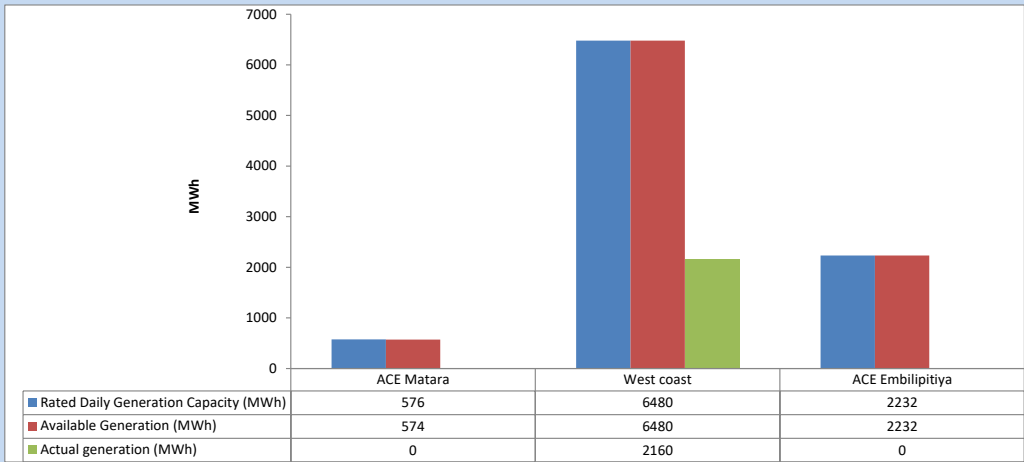


Plant availability is recorded at 6.00 am on

October 13, 2023

5. IPP owned Thermal Plant Dispatch

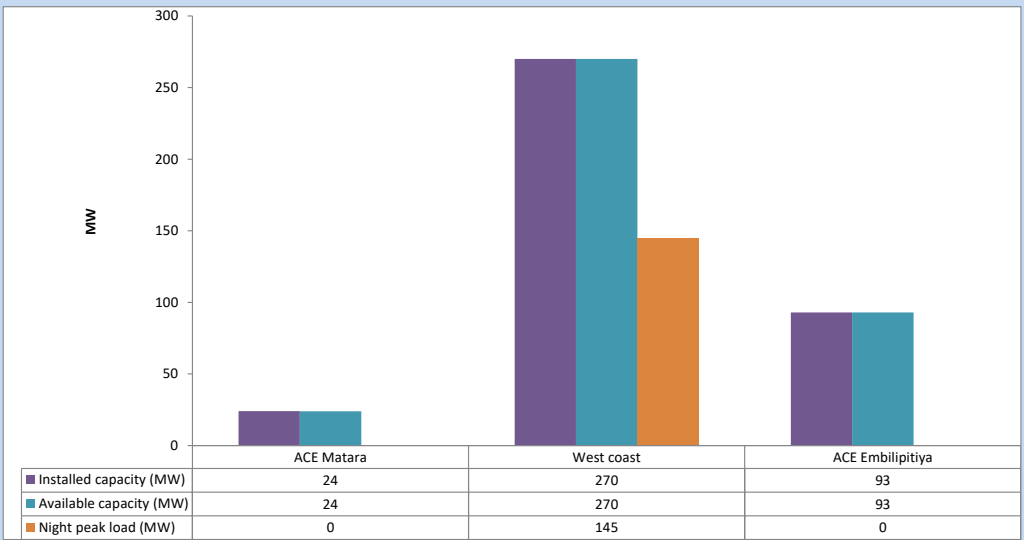
October 12, 2023



Available Generation is estimated based on plant availability at 6.00am on

October 13, 2023

6. IPP owned Thermal Plant Loading at the Night Peak

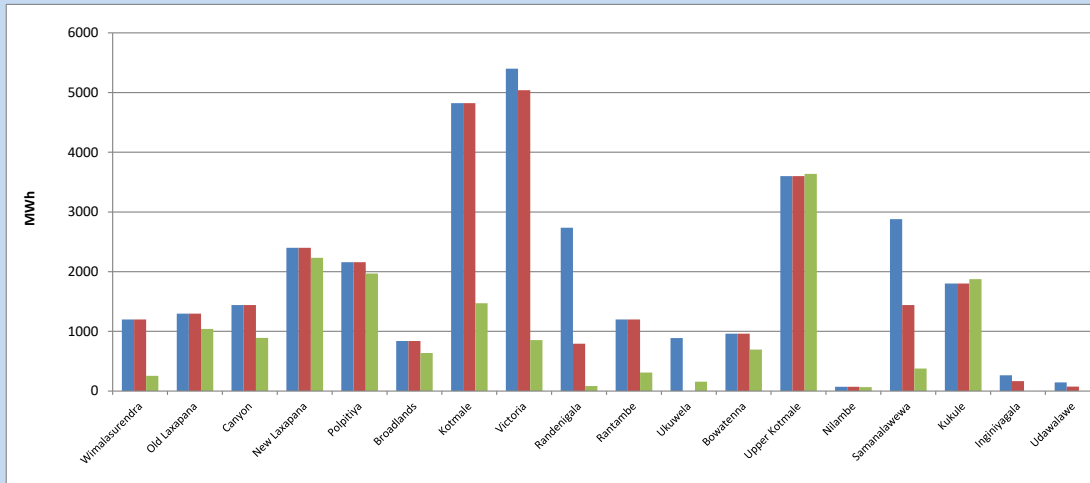


Plant availability is recorded at 6.00 am on

October 13, 2023

7. Major Hydro Plant Dispatch

October 12, 2023

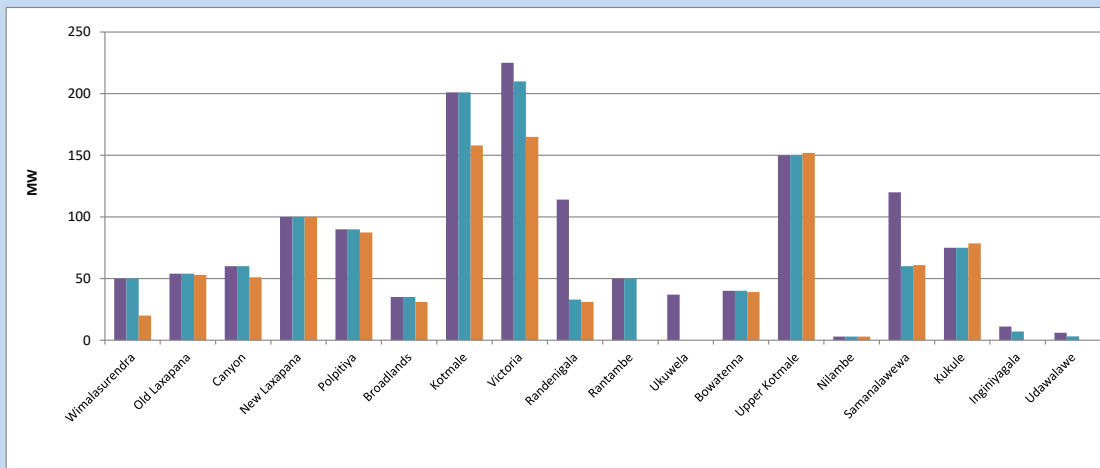


Available Generation is estimated based on plant availability at 6.00am on October 13, 2023
Broadlands power plant is operating in the Commissioning Stage

October 13, 2023

8. Major Hydro Plant Loading at Night Peak

October 12, 2023



Plant availability is recorded at 6.00 am on October 13, 2023
Broadlands power plant is operating in the Commissioning Stage

October 13, 2023

9. Summary of Major Plant performance

Table 05

Plant	Installed Capacity	Plant Availability	Night peak Load	Plant Dispatch
	(MW)	(MW)	(MW)	(MWh)
Wimalasurendra	50	50	20	254
Old Laxapana	54	54	53	1,041
Canyon	60	60	51	891
New Laxapana	100	100	100	2,231
Polpitiya	90	90	87	1,970
Broadlands	35	35	31	636
Kotmale	201	201	158	1,470
Victoria	225	210	165	854
Randenigala	114	33	31	84
Rantambe	50	50	0	311
Ukuwela	37	0	0	158
Bowatenna	40	40	39	695
Upper Kotmale	150	150	152	3,637
Nilambe	3	3	3	65
Samanalawewa	120	60	61	378
Kukule	75	75	79	1,875
Inginiyagala	11	7	0	0
Udawalawe	6	3	0	0
Puttalam Coal I	270	270	263	5,920
Puttalam Coal II	270	270	271	6,013
Puttalam Coal III	270	0	0	0
KPS Small GTs	64	0	0	0
KPS GT 7	115	115	0	0
KCCP	161	0	0	0
Sapugaskanda A	70	50	49	746
Sapugaskanda B	70	63	54	1,022
Uthura Janani	26	16	16	94
Barge CEB	60	60	43	607
CEB-Hambantota	30	20	0	0
CEB-Mathugama	20	13	0	0
ACE Matara	24	24	0	0
Asia Power	50	0	0	0
KCCPS -2	163	155	0	0
West Coast	270	270	145	2,160
Nothern Power	36	0	0	0
ACE Embilipitiya	93	93	0	0
Total	3,483	2,639	2,034	37,554

Plant availability is the availability recorded at 6 am on

October 13, 2023

10. Contribution to the Night Peak in MW

October 12, 2023

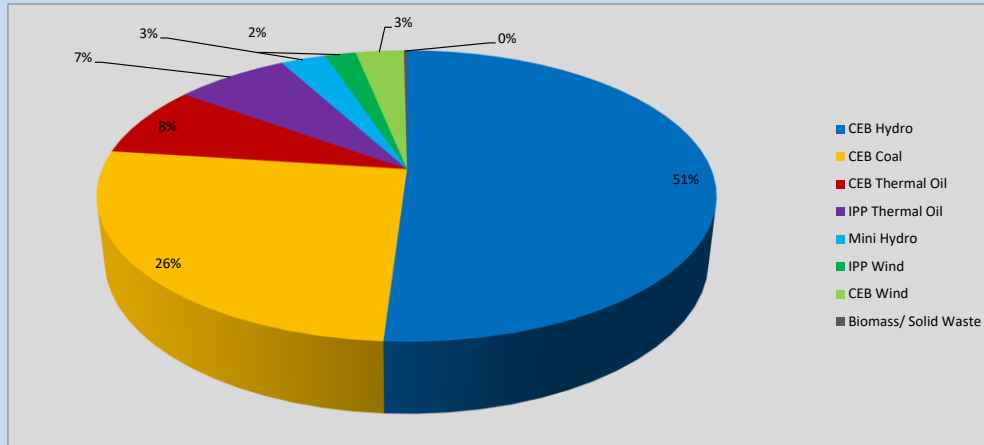


Table 06

CEB Hydro	1045	MW
CEB Coal	534	MW
CEB Thermal Oil	162	MW
IPP Thermal Oil	145	MW
Mini Hydro (Telemetered)	58	MW
IPP Wind	39.6	MW
CEB Wind	61.5	MW
Biomass/ Solid Waste	4	MW

Recorded Peak Demand Data

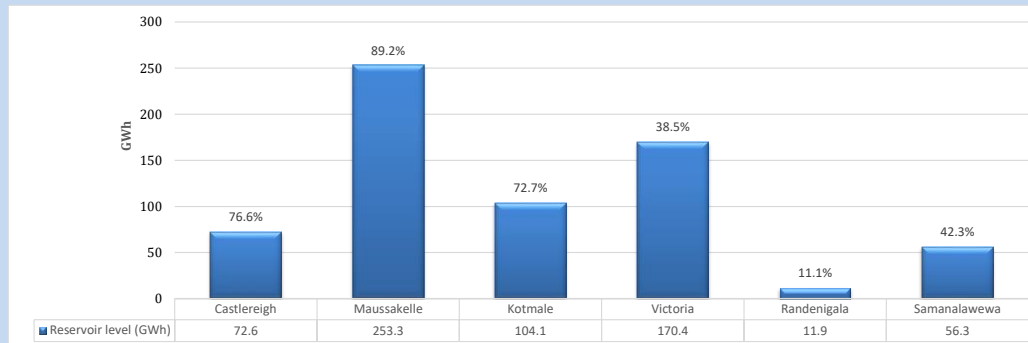
Table 07

Night Peak*	2,049	MW
Day Peak Maximum Demand	1,783	MW
Day Peak Minimum Demand	1,563	MW
Off Peak Minimum Demand	1,096	MW

Above figures are excluding contribution from roof top solar, non telemetered solar and mini hydro plants

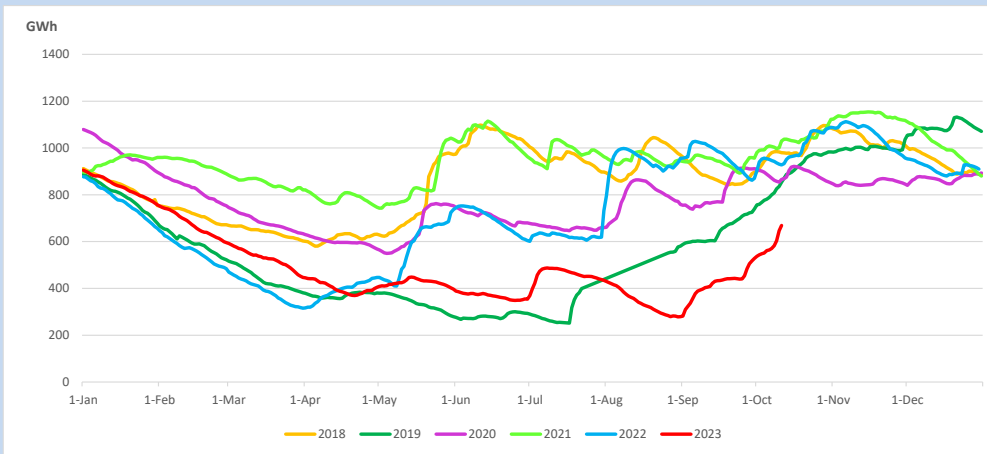
Reservoir Levels -

as at 06.00 Hr on October 13, 2023

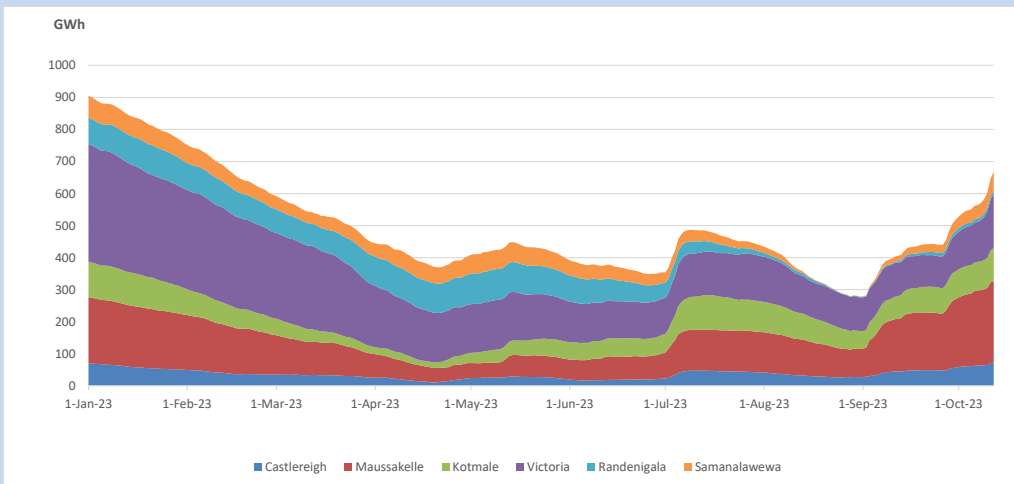


Total Reservoir Level 668.6 GWh
 % of Total capacity 55.5%

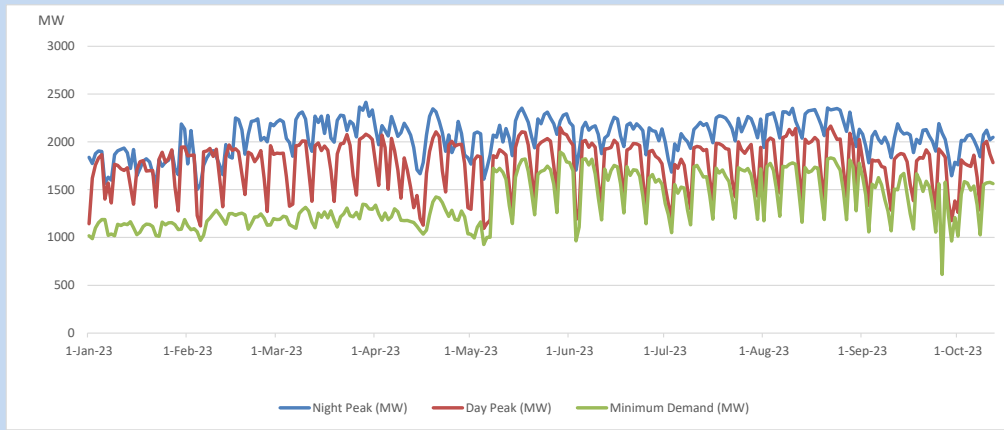
11. Comparison of Total Reservoir Storage Levels with Past Years



12. Variation of Major Hydro Reservoir Levels in the current year (GWh)



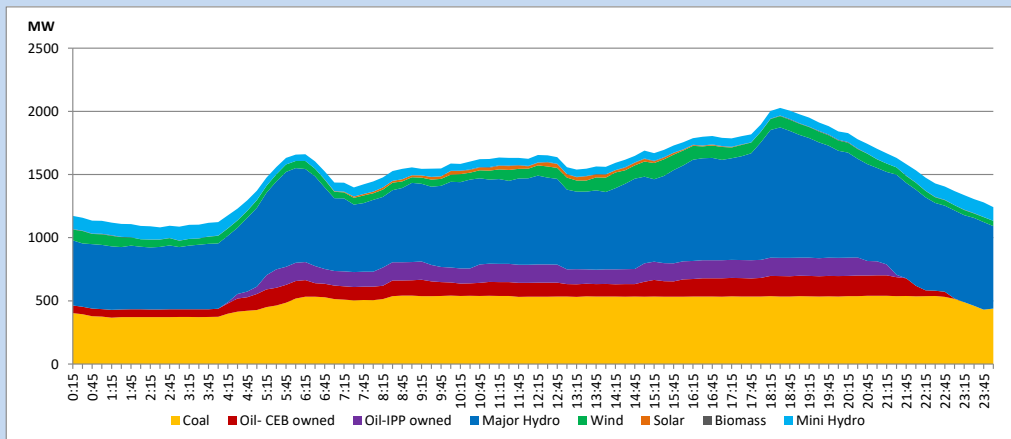
13. Variation of Demand during the current year



The above figures are excluding contribution from roof top solar, non telemetered solar and mini hydro plants

14. Daily Load Curve

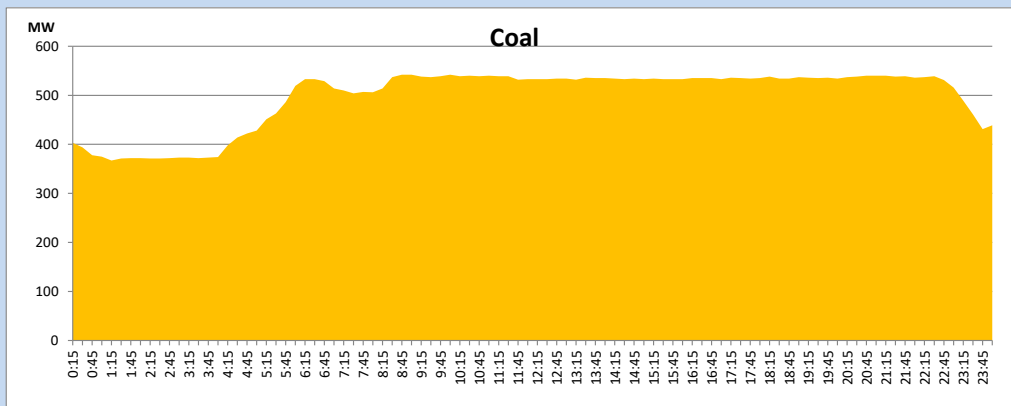
October 12, 2023



Solar and wind data is based on Telemetered Power Stations only

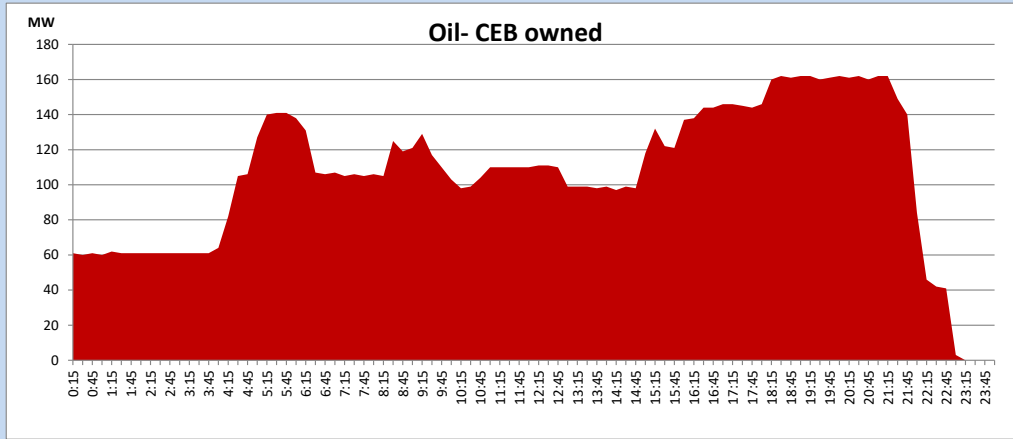
Coal Generation during

October 12, 2023



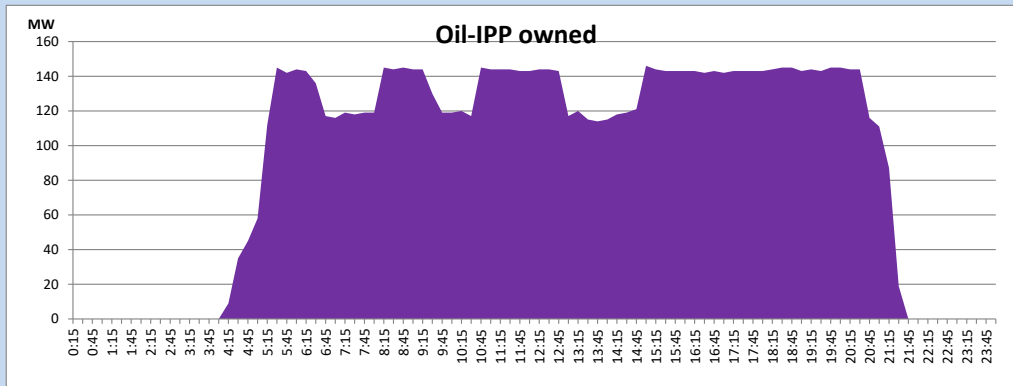
CEB Oil Plant Generation during

October 12, 2023



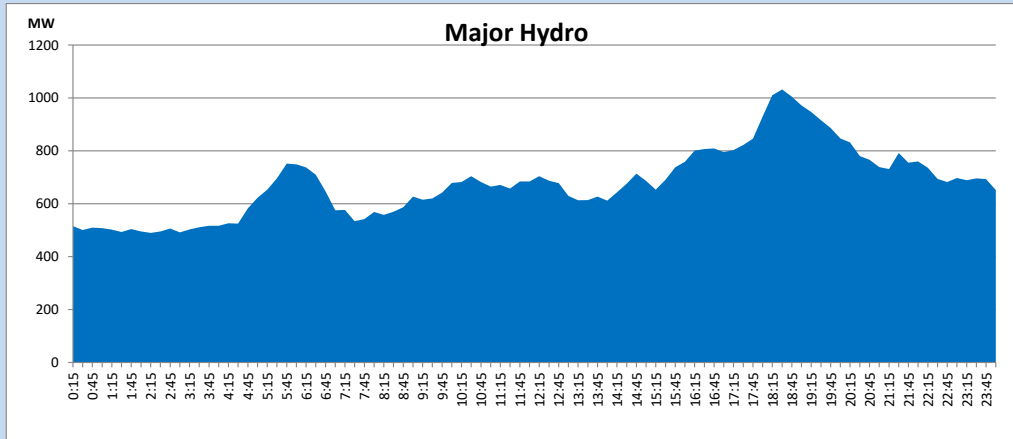
IPP Oil Plant Generation during

October 12, 2023



Major Hydro Generation during

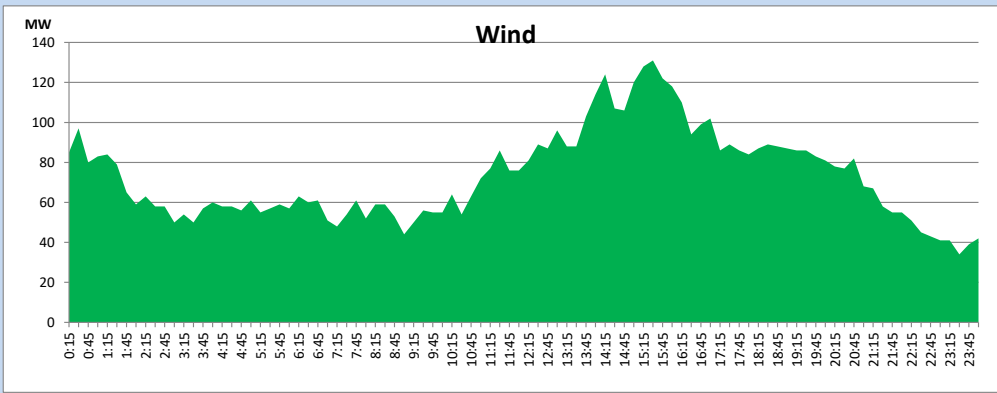
October 12, 2023



Wind Generation during

October 12, 2023

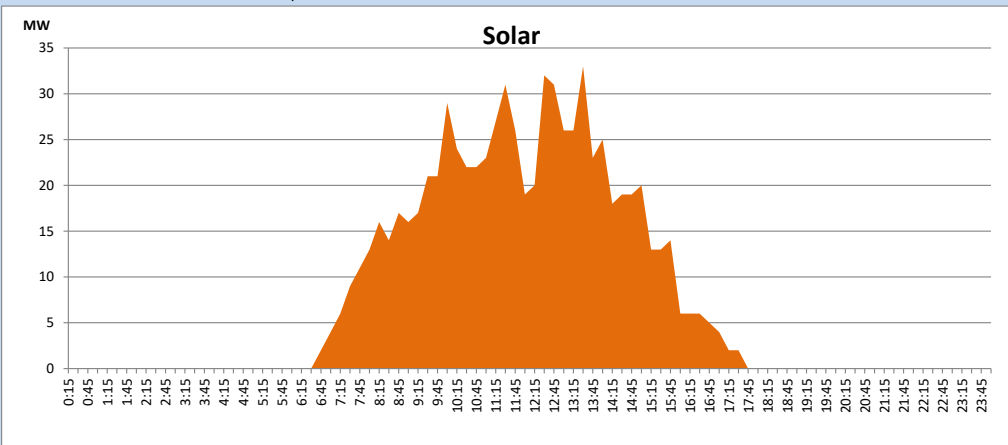
Based on Telemetered Power Stations only



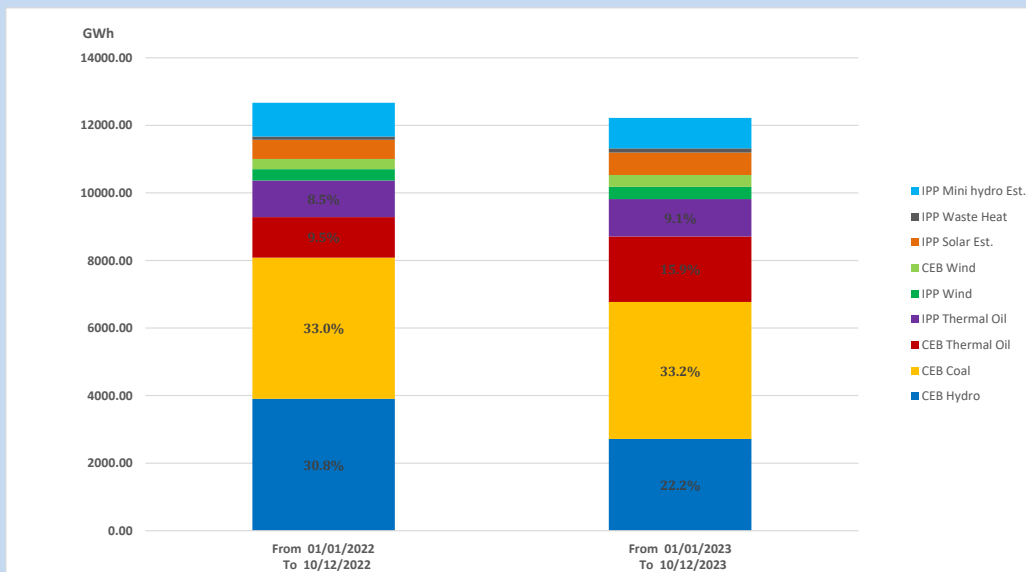
Solar Generation during

October 12, 2023

Based on Telemetered Power Stations only



15. Cumulative Dispatch Comparison with Last Year



Cumulative dispatch

From 01/01/2022 To 10/12/2022

12668 GWh

From 01/01/2023 To 10/12/2023

12221 GWh

The above figures are including contribution from roof top solar, non telemetered solar and mini hydro plants (figures have been adjusted based on the data from the CEB monthly review reports.)

Thermal Plant Fuel types

Table 08

Power Station	Primary Fuel
CEB Thermal	
Sapugaskanda 1	Heavy Fuel
Sapugaskanda 2	Heavy Fuel
Kelanitissa Small Gas Turbines	Auto Diesel
GT 7 - Kelanitissa	Auto Diesel
Kelanitissa CCY	Naphtha or Diesel
Lakvijaya 1	Coal
Lakvijaya 2	Coal
Lakvijaya 3	Coal
Uthuru Janani	Heavy Fuel
Barge CEB	Heavy Fuel
KCCPS -2	Auto Diesel

Power Station	Primary Fuel
Private Thermal	
West Coast	Auto Diesel / Heavy Fuel
ACE Matara	Heavy Fuel
ACE Embilipitiya	Heavy Fuel

Major Incidents reported during the day

October 12, 2023

- 1) Ukuwela both units made unavailable from time to time due to the blockage of Polgolla intake. Both units at Ukuwela PS are unavailable at the present hour.
- 2) Canyon pond spilling started at 15:15hrs and stopped at 01:30hrs(13.10.2023). Laxapana pond spilling started at 17:50hrs and stopped at 02:50hrs(13.10.2023). Broadlands pond spilling started at 23:00hrs and stopped at 3:50hrs (13.10.2023).
- 3) Hambanthota 220/132kV T/F 01 (which was tripped on 23.09.2023) was normalized at 17:06hrs
- 4) Kukule and Upper Kotmale ponds spilling continues to the present hour