

Generation and Reservoirs Statistics

October 10, 2023



PUBLIC UTILITIES COMMISSION OF SRI LANKA

1. Daily Generation Mix in MWh

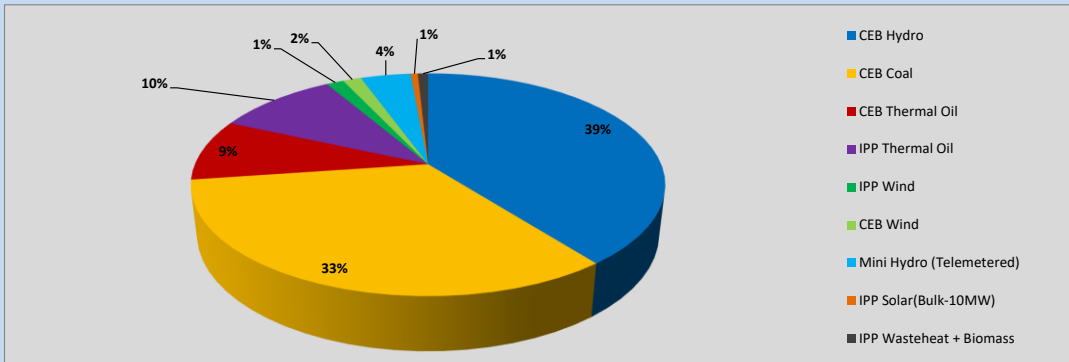


Table 01

	Generation (MWh)
CEB Hydro	15,243
CEB Coal	12,881
CEB Thermal Oil	3,450
IPP Thermal Oil	3,818
IPP Wind	547
CEB Wind	578
Mini Hydro (Telemetered)	1,581
IPP Solar (Bulk)	226
IPP Waste heat + Biomass	322
Total Generation (Excluding estimated figures)	38,646
* Estimated unserved energy	0
* Estimated Mini Hydro (Non telemetered)	3279
* Estimated IPP Solar PV (Bulk 1-10MW)	304
* Estimated Solar Roof Top PV	1930
Total Generation (Including estimated figures)	44,159

* Estimated figures of CEB generation report

Table 02

	Installed Capacity (MW)
CEB Hydro	1409
CEB Coal	810
CEB Thermal Oil	781
IPP Thermal Oil (West Coast, ACE Matara and ACE Embilipitiya)	387
IPP Wind	148
CEB Wind	100
Mini Hydro	416
IPP Waste heat + Biomass	50
IPP Solar	130
Rooftop Solar* (Ordinary)	267
Rooftop Solar* (LT Bulk)	256
Rooftop Solar* (HT Bulk)	61

Data Source - Monthly Review Report [May-2023]

2. Cumulative Dispatch

Following data excludes the contribution from roof top solar, non telemetered solar and mini hydro plants

Table 03 - Current Month

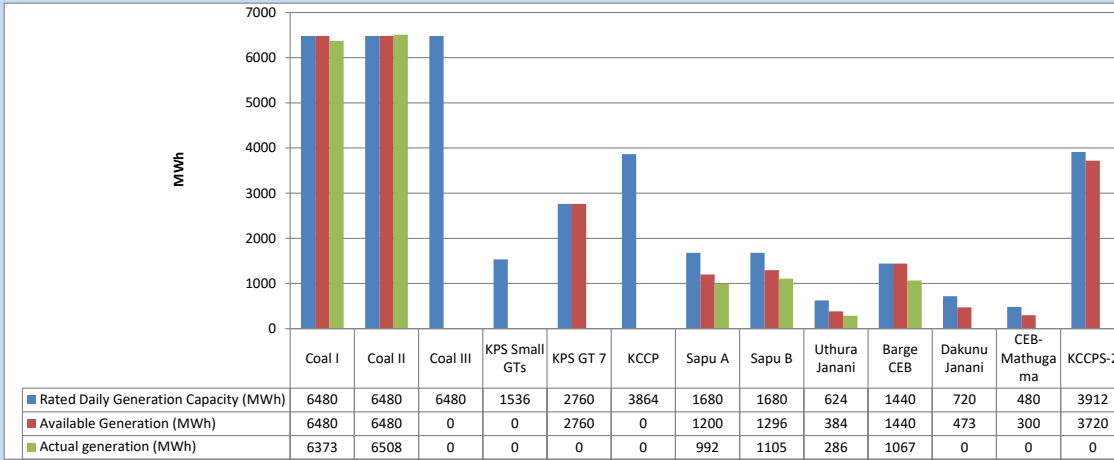
Category	Dispatch (GWh)	
CEB Hydro	132	36.68%
CEB Coal	121	33.52%
CEB Thermal Oil	44	12.21%
IPP Thermal	8	2.16%
SPP Wind	15	4.26%
CEB Wind	17	4.64%
Mini Hydro (Telemetered)	18	5.11%
IPP Solar(Bulk-10MW)	2	0.69%
IPP Waste heat + BMP	3	0.75%
Total	360	

Table 04 - Current Year

Category	Dispatch (GWh)	
CEB Hydro	2,698	24.69%
CEB Coal	4,040	36.98%
CEB Thermal Oil	1,938	17.74%
IPP Thermal	1,103	10.09%
SPP Wind	341	3.12%
CEB Wind	348	3.19%
Mini Hydro (Telemetered)	270	2.47%
IPP Solar(Bulk-10MW)	85	0.78%
IPP Waste heat	102	0.93%
Total	10,924	

3. CEB owned Thermal Plant Dispatch

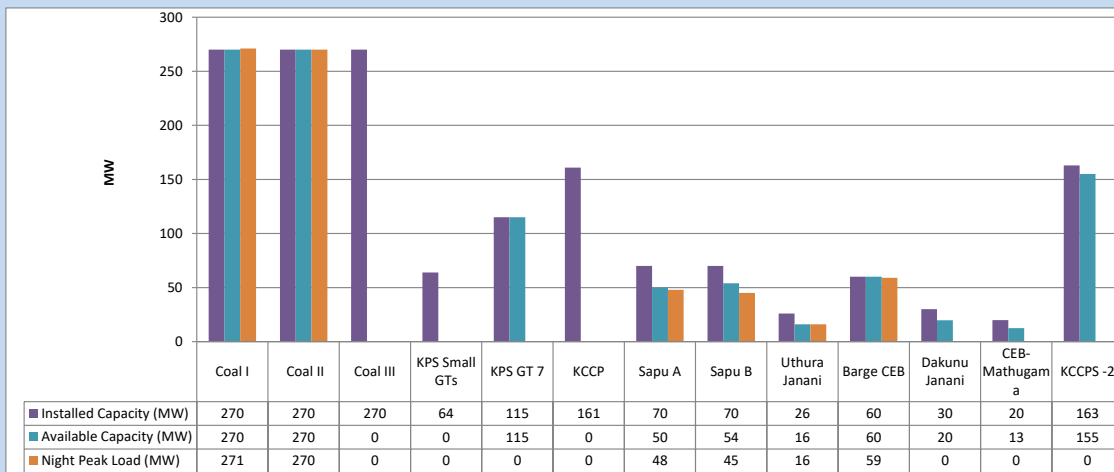
October 10, 2023



Available Generation is estimated based on plant availability at 6.00am on

October 11, 2023

4. CEB owned Thermal Plant Loading at the Night Peak

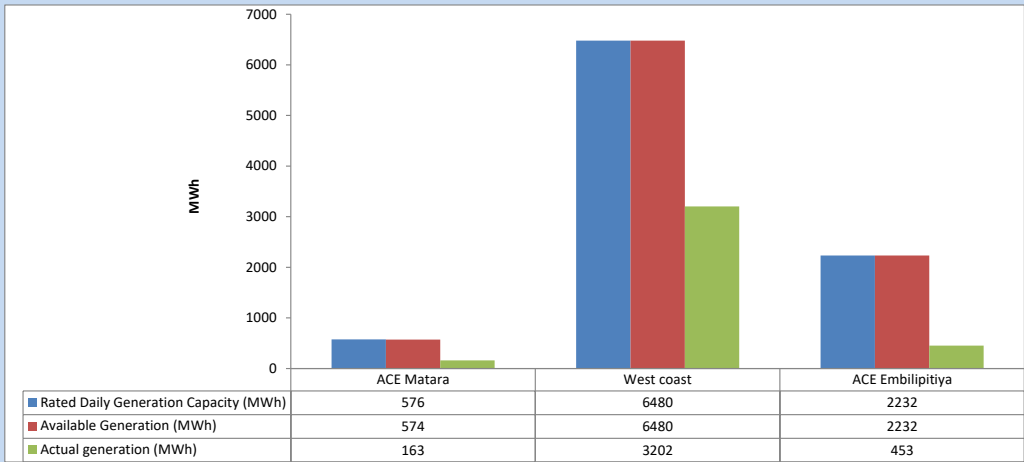


Plant availability is recorded at 6.00 am on

October 11, 2023

5. IPP owned Thermal Plant Dispatch

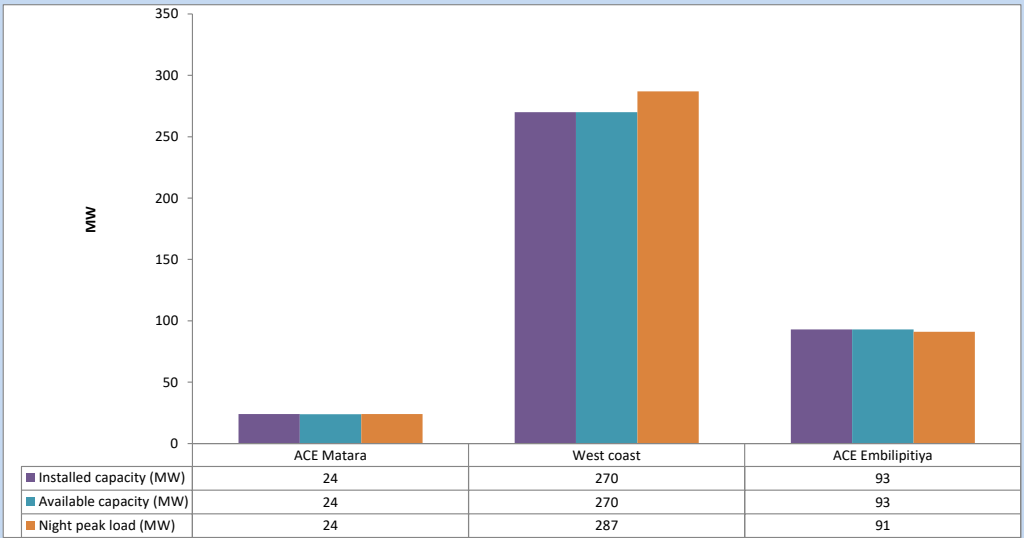
October 10, 2023



Available Generation is estimated based on plant availability at 6.00am on

October 11, 2023

6. IPP owned Thermal Plant Loading at the Night Peak

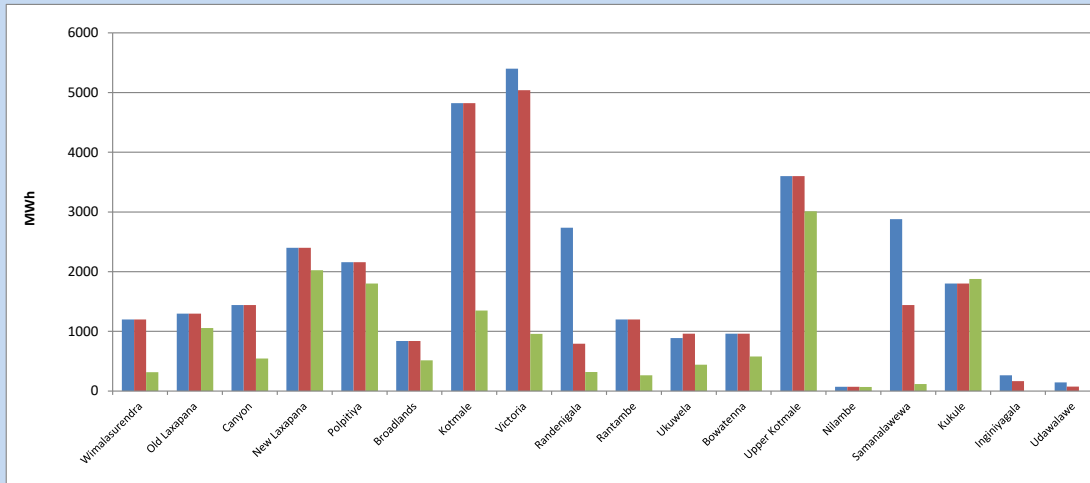


Plant availability is recorded at 6.00 am on

October 11, 2023

7. Major Hydro Plant Dispatch

October 10, 2023

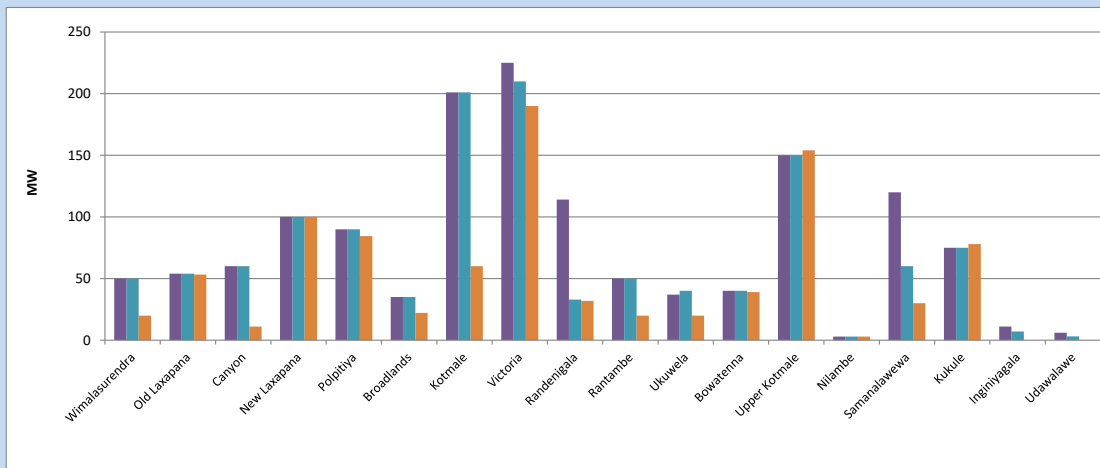


Available Generation is estimated based on plant availability at 6.00am on October 11, 2023
Broadlands power plant is operating in the Commissioning Stage

October 11, 2023

8. Major Hydro Plant Loading at Night Peak

October 10, 2023



Plant availability is recorded at 6.00 am on October 11, 2023
Broadlands power plant is operating in the Commissioning Stage

October 11, 2023

9. Summary of Major Plant performance

Table 05

Plant	Installed Capacity	Plant Availability	Night peak Load	Plant Dispatch
	(MW)	(MW)	(MW)	(MWh)
Wimalasurendra	50	50	20	316
Old Laxapana Canyon	54	54	53	1,057
New Laxapana	60	60	11	546
Polpitiya	100	100	100	2,024
Broadlands	90	90	84	1,800
Kotmale	35	35	22	516
Victoria	201	201	60	1,350
Randenigala	225	210	190	957
Rantambe	114	33	32	318
Ukuwela	50	50	20	264
Bowatenna	37	40	20	442
Upper Kotmale	40	40	39	579
Nilambe	150	150	154	3,011
Samanalawewa	3	3	3	70
Kukule	120	60	30	117
Inginiyagala	75	75	78	1,876
Udawalawe	11	7	0	0
Puttalam Coal I	6	3	0	0
Puttalam Coal II	270	270	271	6,373
Puttalam Coal III	270	270	270	6,508
KPS Small GTs	270	0	0	0
KPS GT 7	64	0	0	0
KCCP	115	115	0	0
Sapugaskanda A	161	0	0	0
Sapugaskanda B	70	50	48	992
Uthura Janani	70	54	45	1,105
Barge CEB	26	16	16	286
CEB-Hambantota	60	60	59	1,067
CEB-Mathugama	30	20	0	0
ACE Matara	20	13	0	0
Asia Power	24	24	24	163
KCCPS -2	50	0	0	0
West Coast	163	155	0	0
Nothern Power	270	270	287	3,202
ACE Embilipitiya	36	0	0	0
Total	93	93	91	453
	3,483	2,670	2,125	38,646

Plant availability is the availability recorded at 6 am on

October 11, 2023

10. Contribution to the Night Peak in MW

October 10, 2023

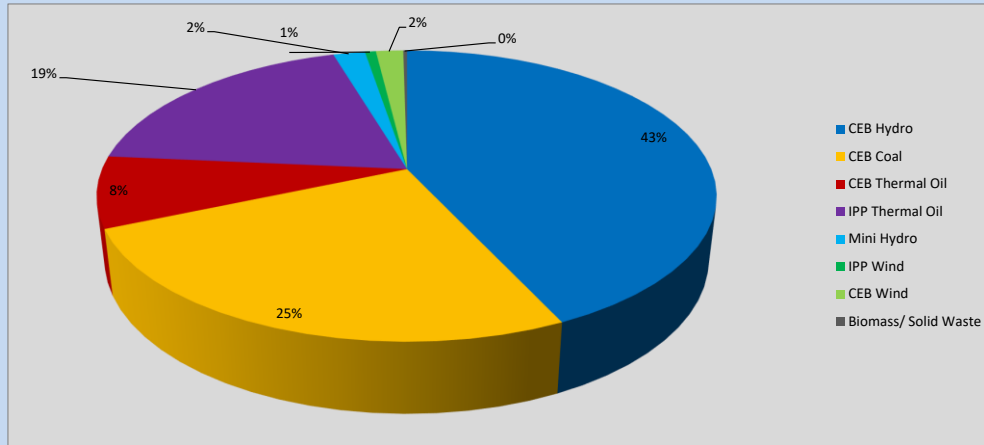


Table 06

CEB Hydro	914	MW
CEB Coal	541	MW
CEB Thermal Oil	168	MW
IPP Thermal Oil	402	MW
Mini Hydro (Telemetered)	42	MW
IPP Wind	14.5	MW
CEB Wind	36.1	MW
Biomass/ Solid Waste	5	MW

Recorded Peak Demand Data

Table 07

Night Peak*	2,122	MW
Day Peak Maximum Demand	2,007	MW
Day Peak Minimum Demand	1,571	MW
Off Peak Minimum Demand	1,150	MW

Above figures are excluding contribution from roof top solar, non telemetered solar and mini hydro plants

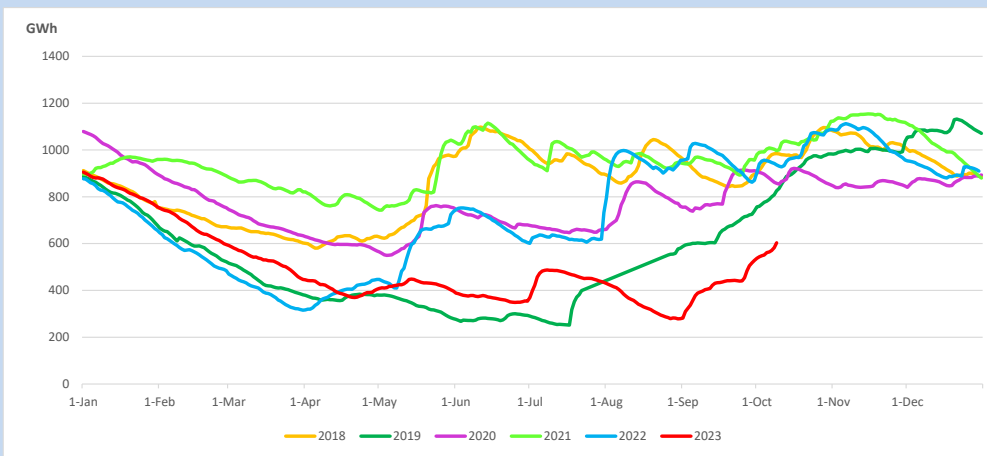
Reservoir Levels -

as at 06.00 Hr on October 11, 2023

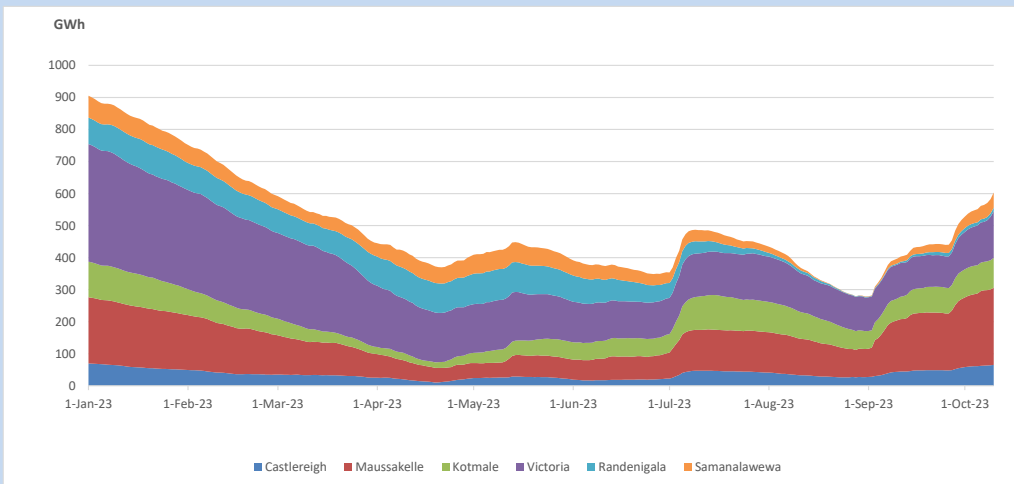


Total Reservoir Level 603.3 GWh
% of Total capacity 50.0%

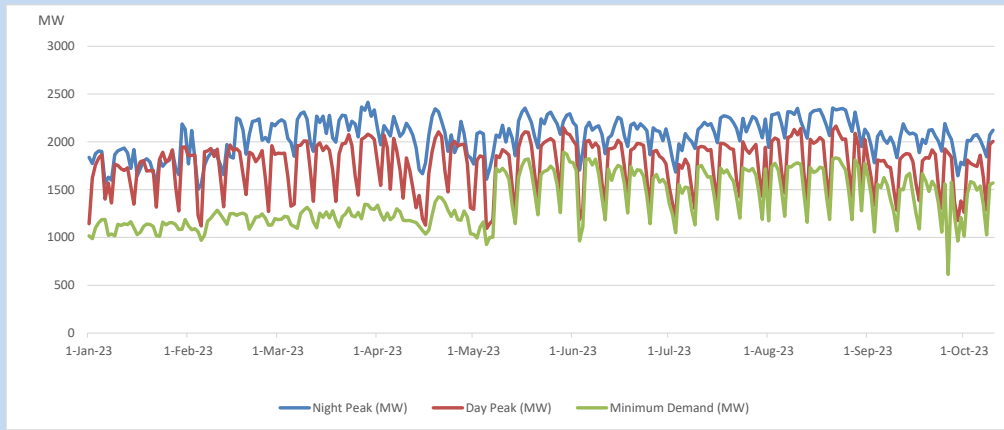
11. Comparison of Total Reservoir Storage Levels with Past Years



12. Variation of Major Hydro Reservoir Levels in the current year (GWh)



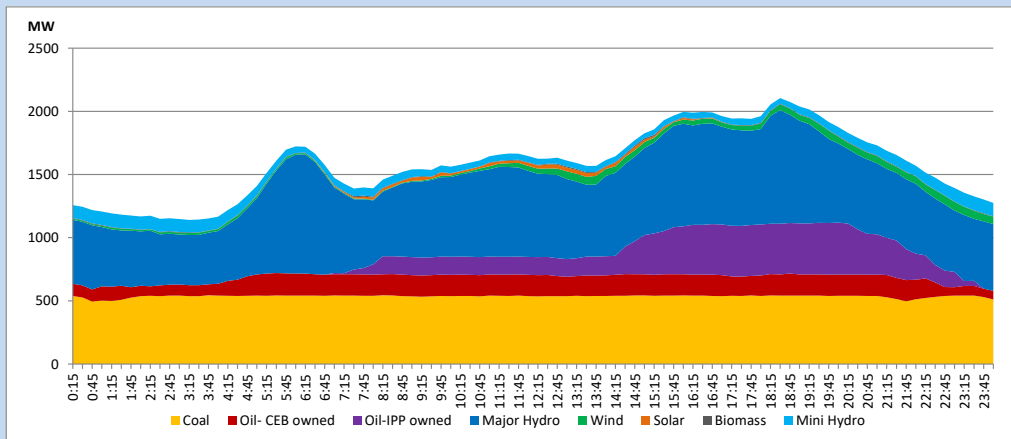
13. Variation of Demand during the current year



The above figures are excluding contribution from roof top solar, non telemetered solar and mini hydro plants

14. Daily Load Curve

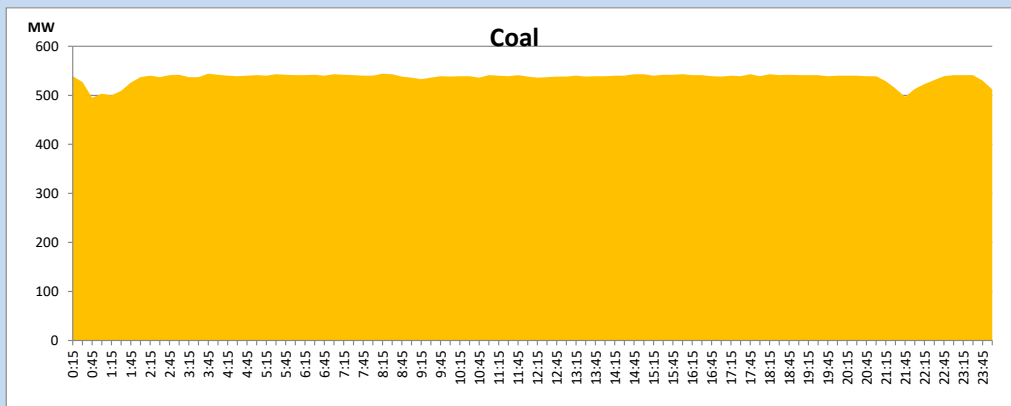
October 10, 2023



Solar and wind data is based on Telemetered Power Stations only

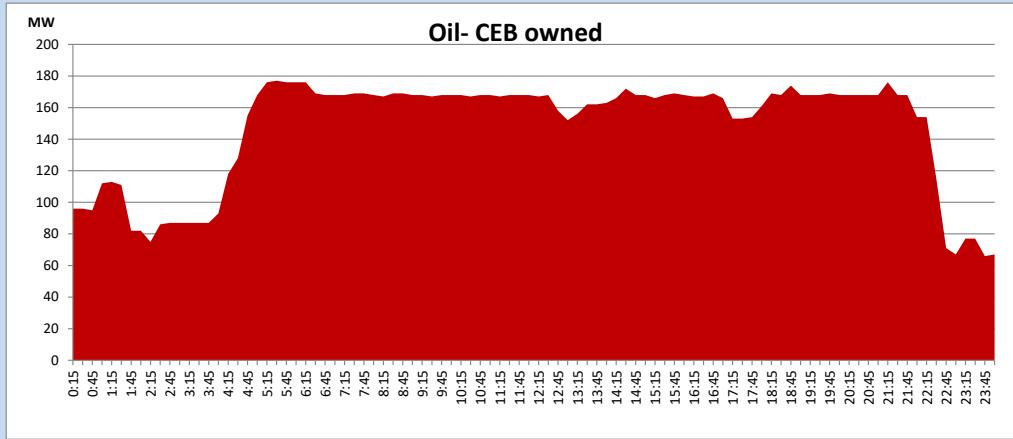
Coal Generation during

October 10, 2023



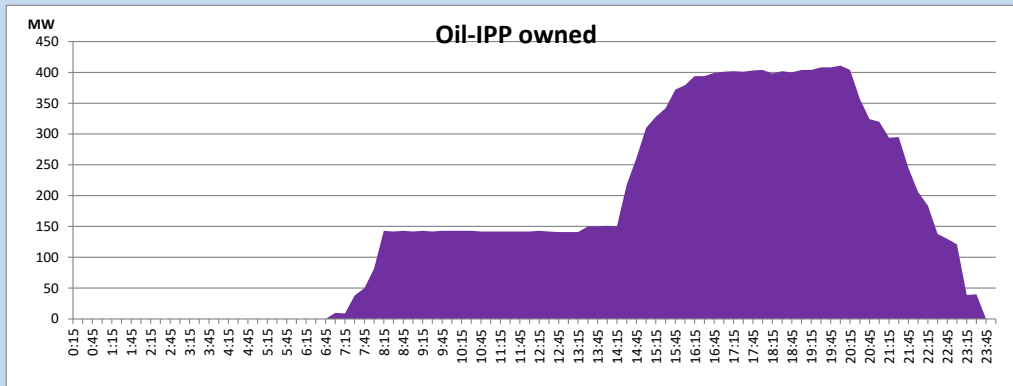
CEB Oil Plant Generation during

October 10, 2023



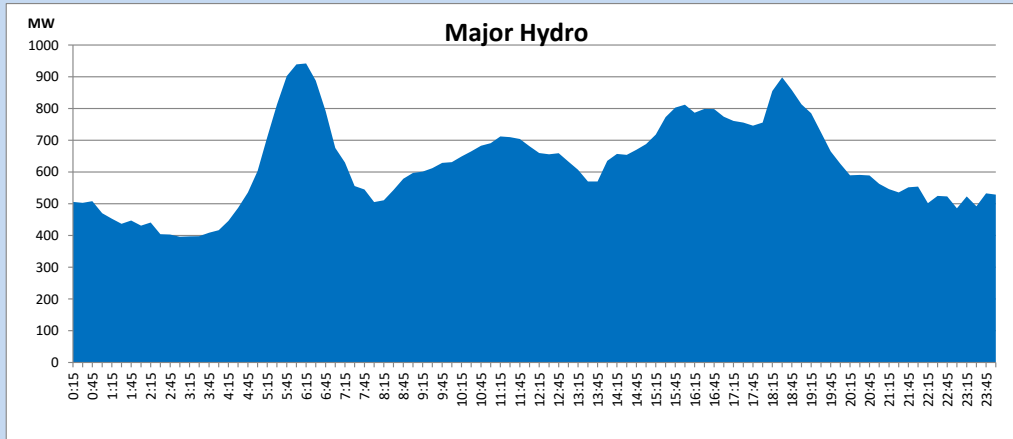
IPP Oil Plant Generation during

October 10, 2023



Major Hydro Generation during

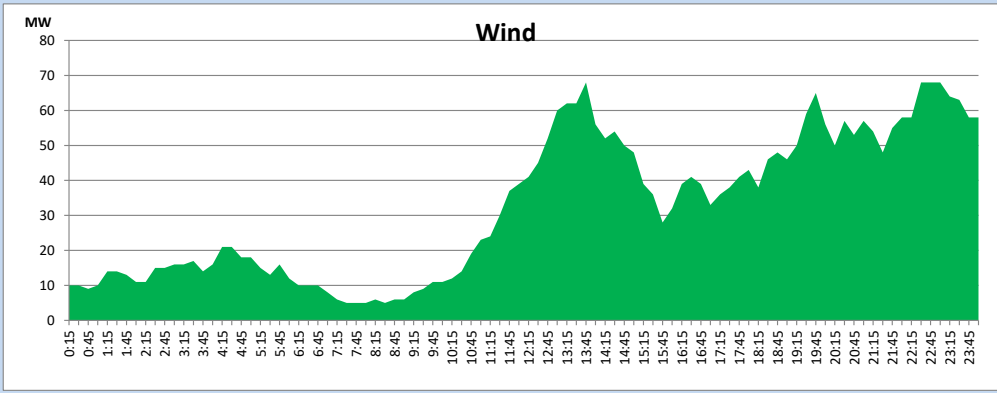
October 10, 2023



Wind Generation during

October 10, 2023

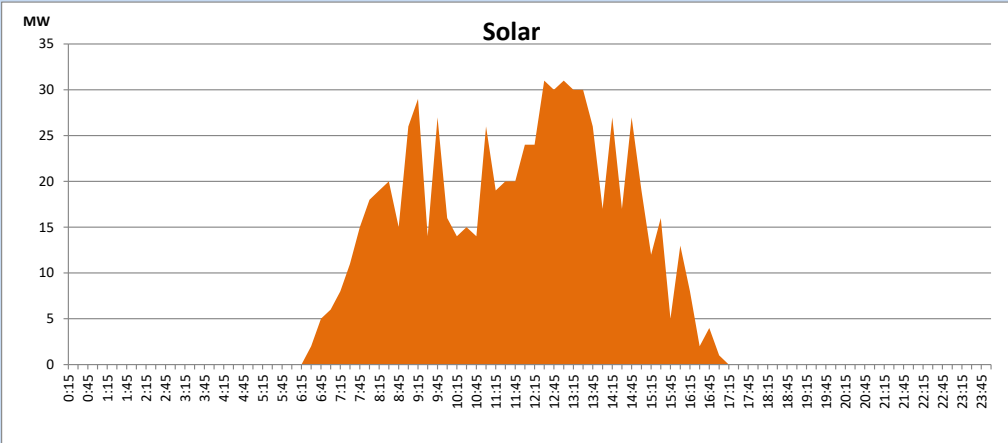
Based on Telemetered Power Stations only



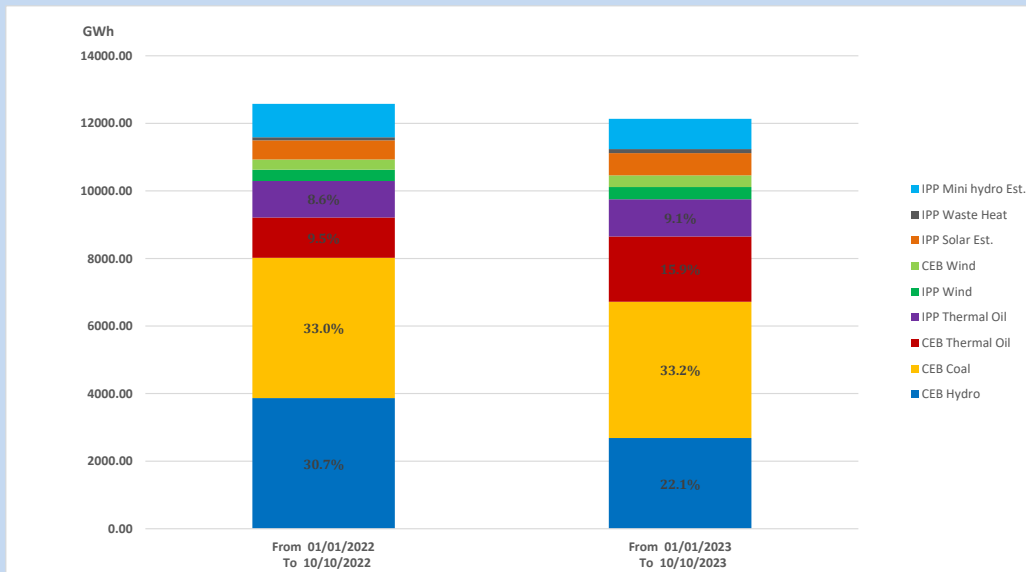
Solar Generation during

October 10, 2023

Based on Telemetered Power Stations only



15. Cumulative Dispatch Comparison with Last Year



Cumulative dispatch

From 01/01/2022 To 10/10/2022

12578 GWh

From 01/01/2023 To 10/10/2023

12134 GWh

The above figures are including contribution from roof top solar, non telemetered solar and mini hydro plants (figures have been adjusted based on the data from the CEB monthly review reports.)

Thermal Plant Fuel types

Table 08

Power Station	Primary Fuel
CEB Thermal	
Sapugaskanda 1	Heavy Fuel
Sapugaskanda 2	Heavy Fuel
Kelanitissa Small Gas Turbines	Auto Diesel
GT 7 - Kelanitissa	Auto Diesel
Kelanitissa CCY	Naphtha or Diesel
Lakvijaya 1	Coal
Lakvijaya 2	Coal
Lakvijaya 3	Coal
Uthuru Janani	Heavy Fuel
Barge CEB	Heavy Fuel
KCCPS -2	Auto Diesel

Power Station	Primary Fuel
Private Thermal	
West Coast	Auto Diesel / Heavy Fuel
ACE Matara	Heavy Fuel
ACE Embilipitiya	Heavy Fuel

Major Incidents reported during the day

October 10, 2023

- 1) Ukuwela both units made unavailable at 11:17hrs due to the blockage of Polgolla intake. Ukuwela one unit made available at 13:55hrs and the other unit is yet to resume generation.
- 2) New Laxapana Unit 01 made unavailable at 11:43hrs due to a PRV alarm in generator T/F 01. The Unit resumed generation at 18:04hrs.
- 3) Kukule pond spilling stopped at 11:44hrs and again started at 16:27hrs. The pond spilling continues to the present hour