

Generation and Reservoirs Statistics

October 8, 2023



PUBLIC UTILITIES COMMISSION OF SRI LANKA

1. Daily Generation Mix in MWh

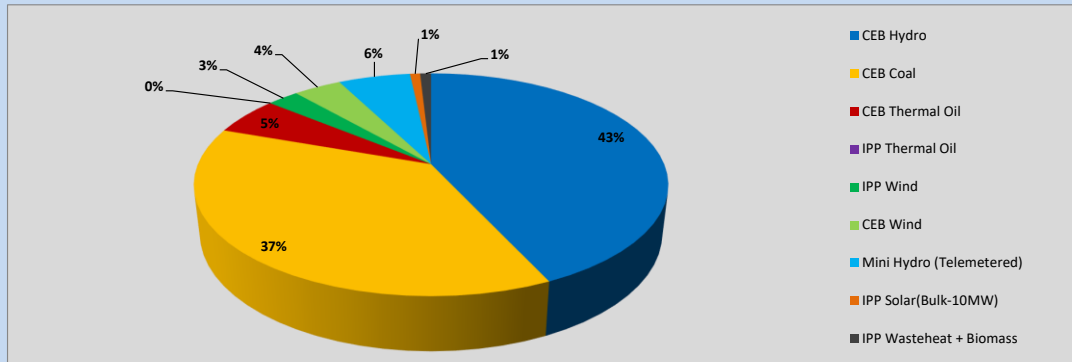


Table 01

	Generation (MWh)
CEB Hydro	13,315
CEB Coal	11,533
CEB Thermal Oil	1,712
IPP Thermal Oil	-
IPP Wind	796
CEB Wind	1,206
Mini Hydro (Telemetered)	1,813
IPP Solar (Bulk)	255
IPP Waste heat + Biomass	276
Total Generation (Excluding estimated figures)	30,906
* Estimated unserved energy	0
* Estimated Mini Hydro (Non telemetered)	3047
* Estimated IPP Solar PV (Bulk 1-10MW)	304
* Estimated Solar Roof Top PV	1930
Total Generation (Including estimated figures)	36,187

* Estimated figures of CEB generation report

Table 02

	Installed Capacity (MW)
CEB Hydro	1409
CEB Coal	810
CEB Thermal Oil	781
IPP Thermal Oil (West Coast, ACE Matara and ACE Embilipitiya)	387
IPP Wind	148
CEB Wind	100
Mini Hydro	416
IPP Waste heat + Biomass	50
IPP Solar	130
Rooftop Solar* (Ordinary)	267
Rooftop Solar* (LT Bulk)	256
Rooftop Solar* (HT Bulk)	61

Data Source - Monthly Review Report [May-2023]

2. Cumulative Dispatch

Following data excludes the contribution from roof top solar, non telemetered solar and mini hydro plants

Table 03 - Current Month

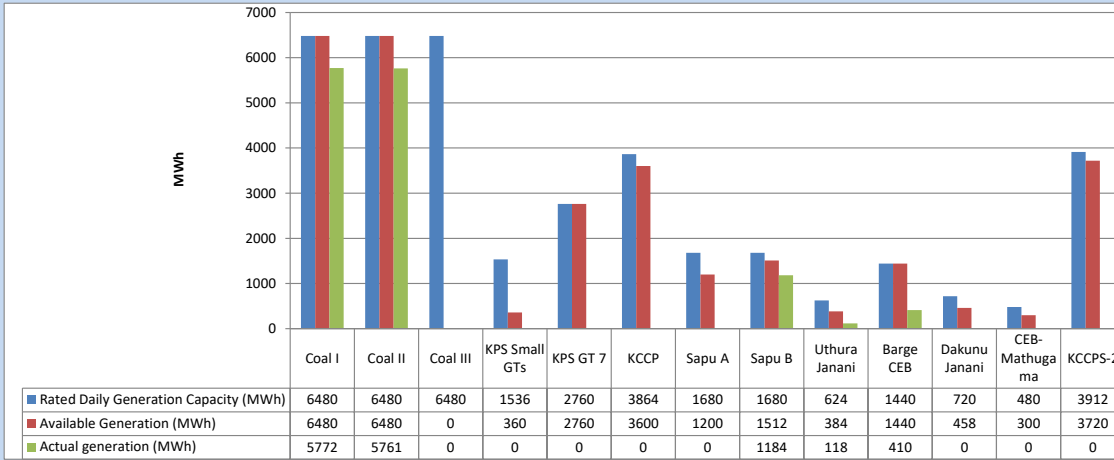
Category	Dispatch (GWh)	
CEB Hydro	102	35.88%
CEB Coal	95	33.54%
CEB Thermal Oil	37	13.00%
IPP Thermal	1	0.38%
SPP Wind	14	5.03%
CEB Wind	15	5.41%
Mini Hydro (Telemetered)	15	5.36%
IPP Solar(Bulk-10MW)	2	0.68%
IPP Waste heat + BMP	2	0.73%
Total	284	

Table 04 - Current Year

Category	Dispatch (GWh)	
CEB Hydro	2,667	24.59%
CEB Coal	4,015	37.01%
CEB Thermal Oil	1,931	17.80%
IPP Thermal	1,096	10.10%
SPP Wind	340	3.13%
CEB Wind	347	3.20%
Mini Hydro (Telemetered)	267	2.46%
IPP Solar(Bulk-10MW)	84	0.78%
IPP Waste heat	101	0.93%
Total	10,848	

3. CEB owned Thermal Plant Dispatch

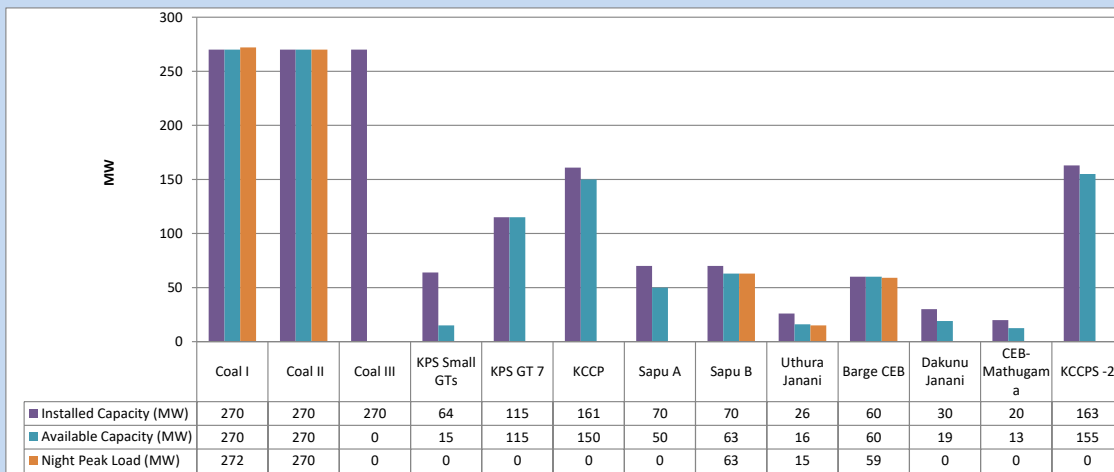
October 8, 2023



Available Generation is estimated based on plant availability at 6.00am on

October 9, 2023

4. CEB owned Thermal Plant Loading at the Night Peak

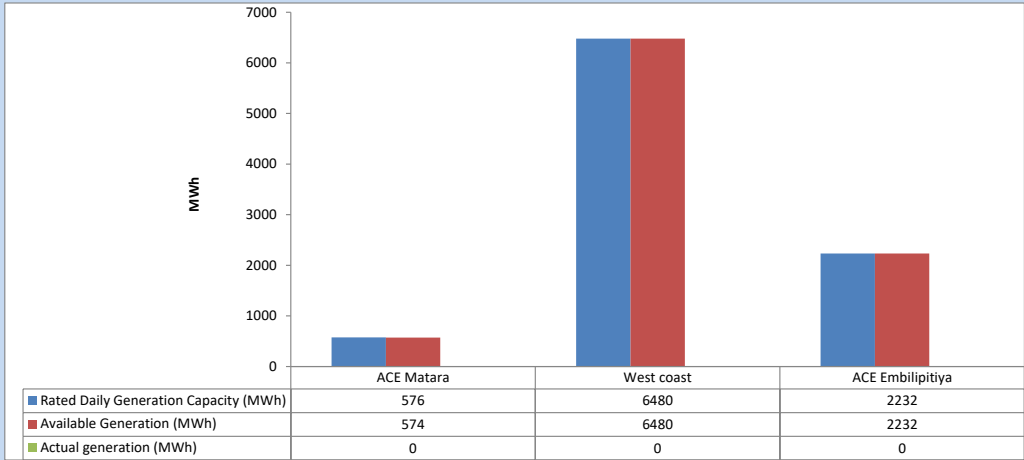


Plant availability is recorded at 6.00 am on

October 9, 2023

5. IPP owned Thermal Plant Dispatch

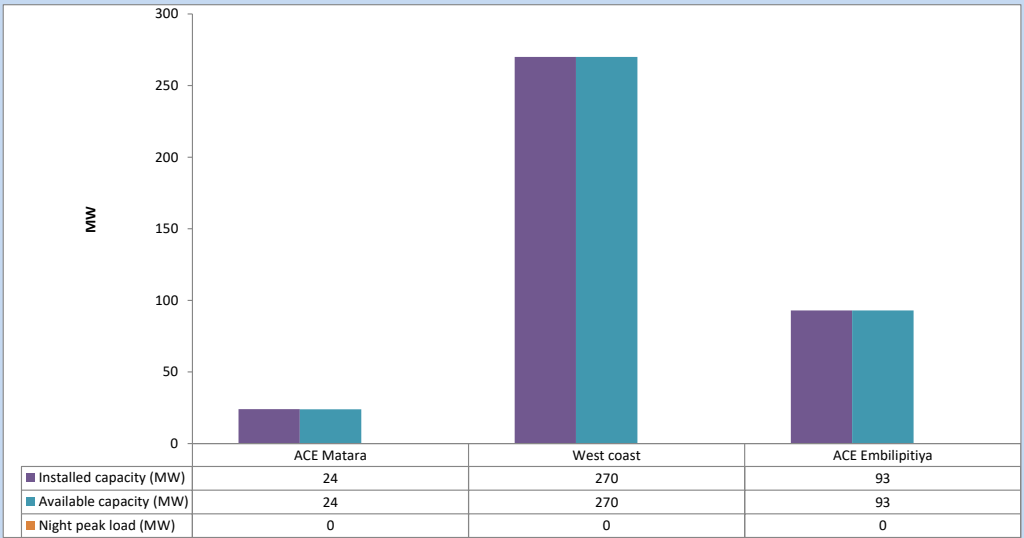
October 8, 2023



Available Generation is estimated based on plant availability at 6.00am on

October 9, 2023

6. IPP owned Thermal Plant Loading at the Night Peak

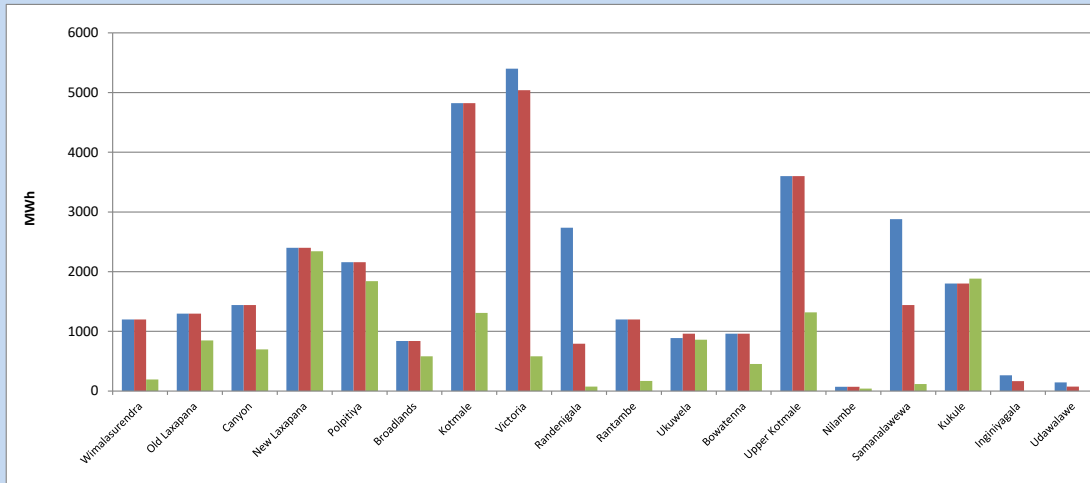


Plant availability is recorded at 6.00 am on

October 9, 2023

7. Major Hydro Plant Dispatch

October 8, 2023

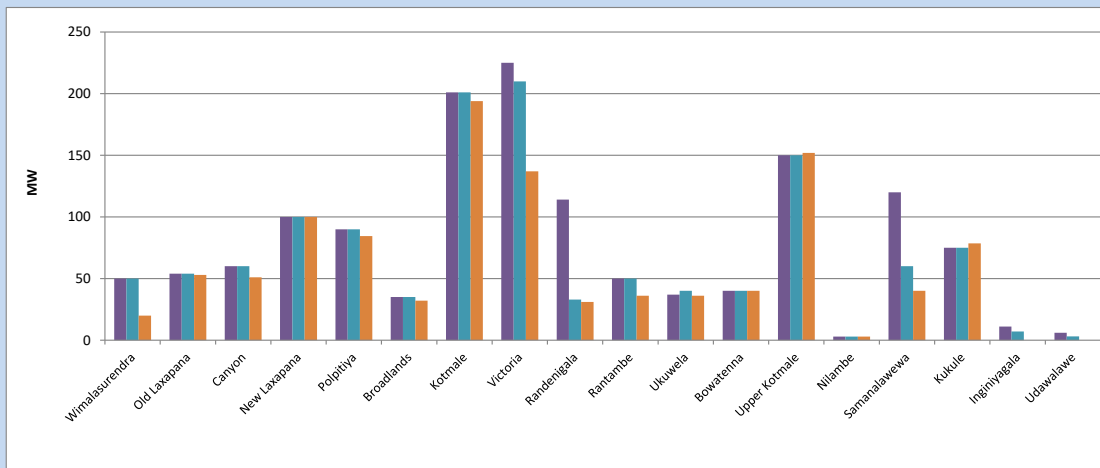


Available Generation is estimated based on plant availability at 6.00am on October 9, 2023
 Broadlands power plant is operating in the Commissioning Stage

October 9, 2023

8. Major Hydro Plant Loading at Night Peak

October 8, 2023



Plant availability is recorded at 6.00 am on October 9, 2023
 Broadlands power plant is operating in the Commissioning Stage

9. Summary of Major Plant performance

Table 05

Plant	Installed Capacity	Plant Availability	Night peak Load	Plant Dispatch
	(MW)	(MW)	(MW)	(MWh)
Wimalasurendra	50	50	20	195
Old Laxapana Canyon	54	54	53	848
New Laxapana	60	60	51	697
Polpitiya	100	100	100	2,342
Broadlands	90	90	85	1,840
Kotmale	35	35	32	583
Kotmale	201	201	194	1,310
Victoria	225	210	137	582
Randenigala	114	33	31	74
Rantambe	50	50	36	169
Ukuwela	37	40	36	860
Bowatenna	40	40	40	455
Upper Kotmale	150	150	152	1,318
Nilambe	3	3	3	42
Samanalawewa	120	60	40	117
Kukule	75	75	79	1,883
Inginiyagala	11	7	0	0
Udawalawe	6	3	0	0
Puttalam Coal I	270	270	272	5,772
Puttalam Coal II	270	270	270	5,761
Puttalam Coal III	270	0	0	0
KPS Small GTs	64	15	0	0
KPS GT 7	115	115	0	0
KCCP	161	150	0	0
Sapugaskanda A	70	50	0	0
Sapugaskanda B	70	63	63	1,184
Uthura Janani	26	16	15	118
Barge CEB	60	60	59	410
CEB-Hambantota	30	19	0	0
CEB-Mathugama	20	13	0	0
ACE Matara	24	24	0	0
Asia Power	50	0	0	0
KCCPS -2	163	155	0	0
West Coast	270	270	0	0
Nothern Power	36	0	0	0
ACE Embilipitiya	93	93	0	0
Total	3,483	2,844	1,865	30,906

Plant availability is the availability recorded at 6 am on

October 9, 2023

10. Contribution to the Night Peak in MW

October 8, 2023

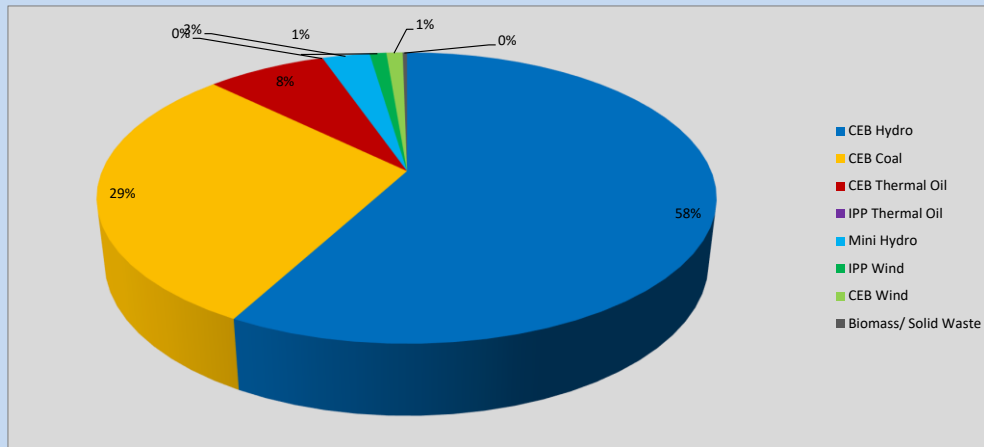


Table 06

CEB Hydro	1067	MW
CEB Coal	542	MW
CEB Thermal Oil	137	MW
IPP Thermal Oil	0	MW
Mini Hydro (Telemetered)	55	MW
IPP Wind	19.3	MW
CEB Wind	18.7	MW
Biomass/ Solid Waste	5	MW

Recorded Peak Demand Data

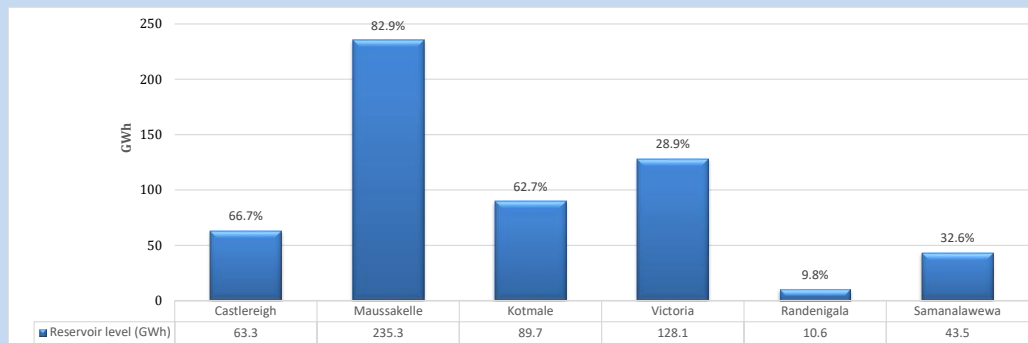
Table 07

Night Peak*	1,844	MW
Day Peak Maximum Demand	1,286	MW
Day Peak Minimum Demand	1,027	MW
Off Peak Minimum Demand	1,067	MW

Above figures are excluding contribution from roof top solar, non telemetered solar and mini hydro plants

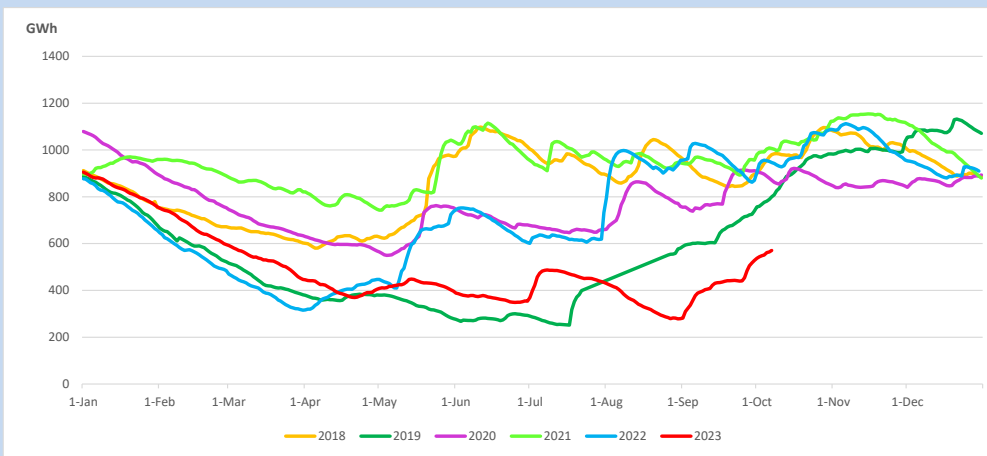
Reservoir Levels -

as at 06.00 Hr on October 9, 2023

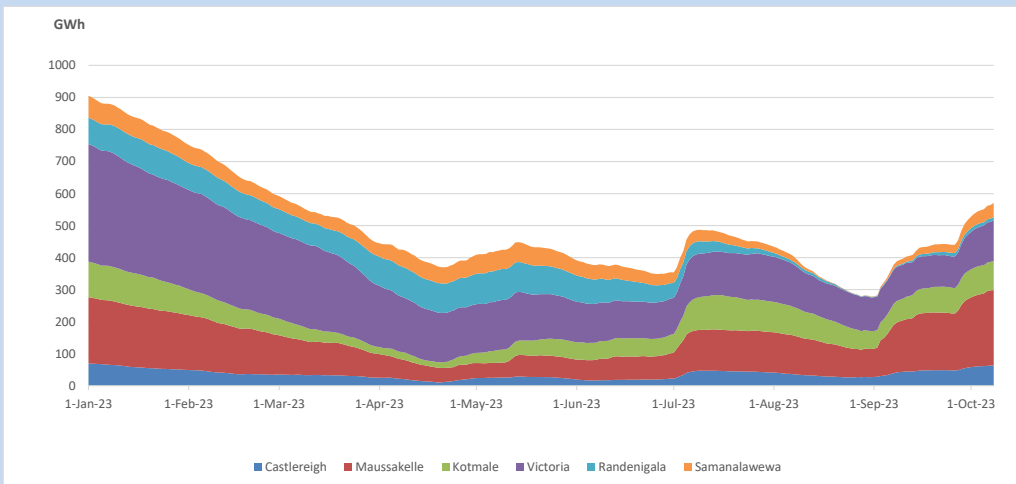


Total Reservoir Level 570.5 GWh
% of Total capacity 47.3%

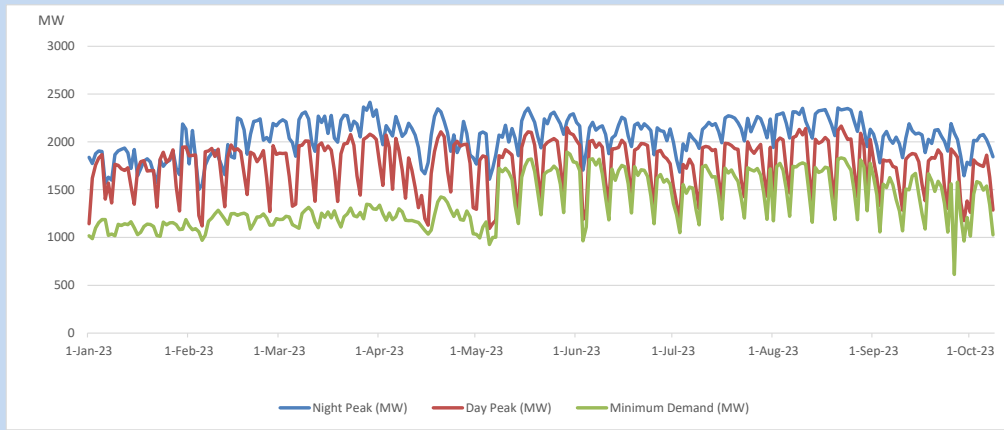
11. Comparison of Total Reservoir Storage Levels with Past Years



12. Variation of Major Hydro Reservoir Levels in the current year (GWh)



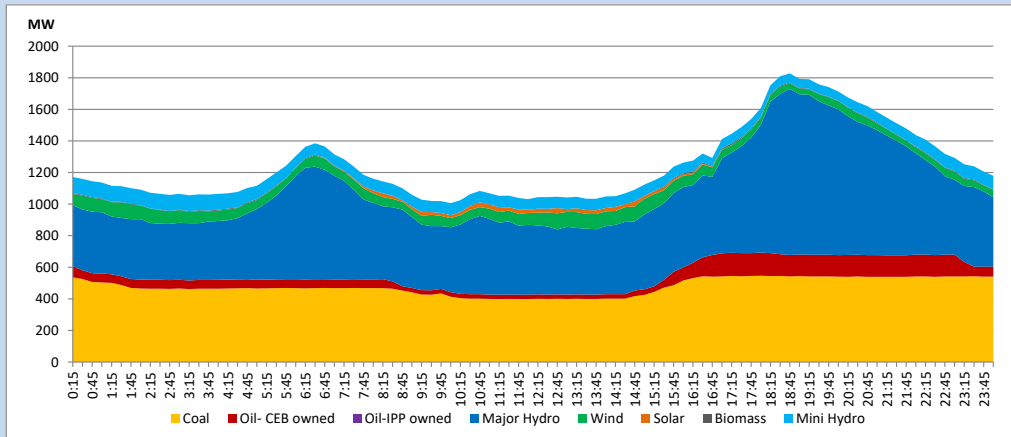
13. Variation of Demand during the current year



The above figures are excluding contribution from roof top solar, non telemetered solar and mini hydro plants

14. Daily Load Curve

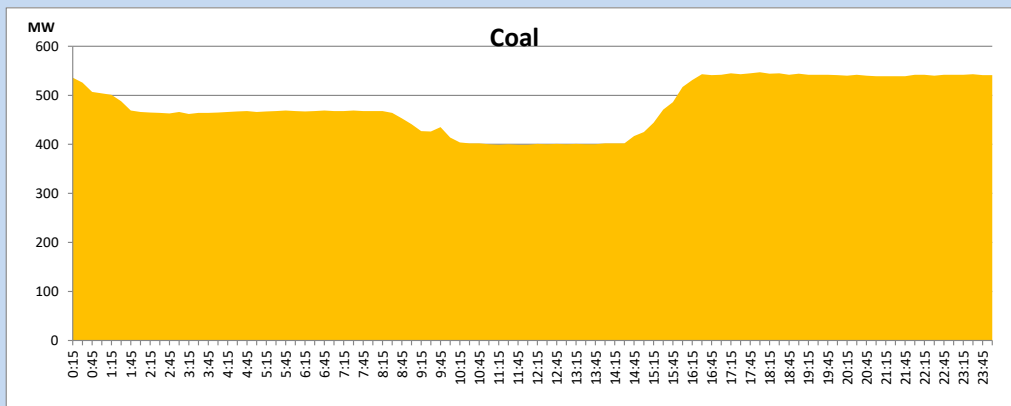
October 8, 2023



Solar and wind data is based on Telemetered Power Stations only

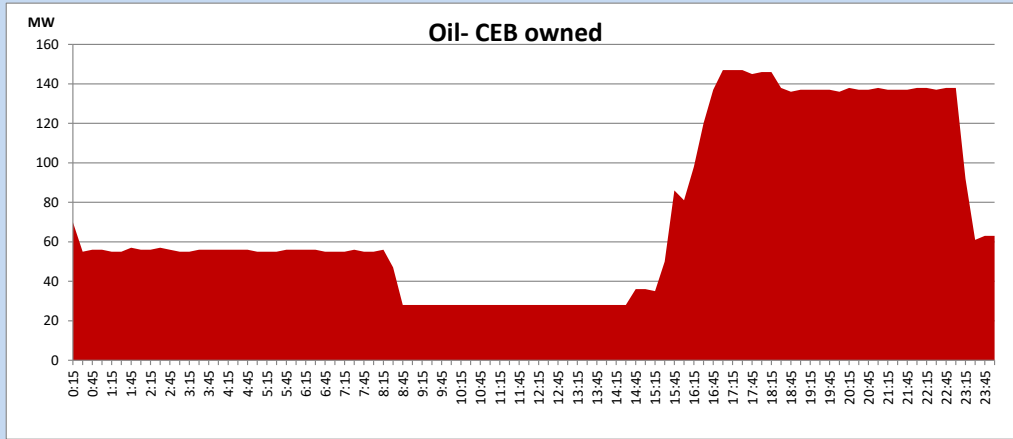
Coal Generation during

October 8, 2023



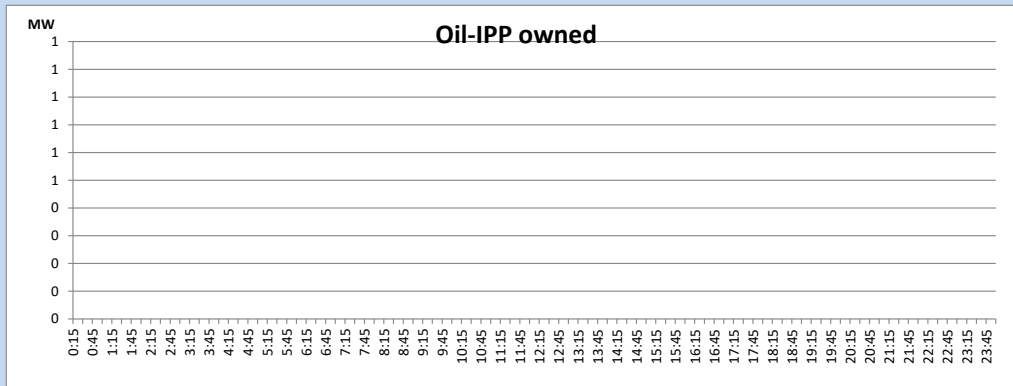
CEB Oil Plant Generation during

October 8, 2023



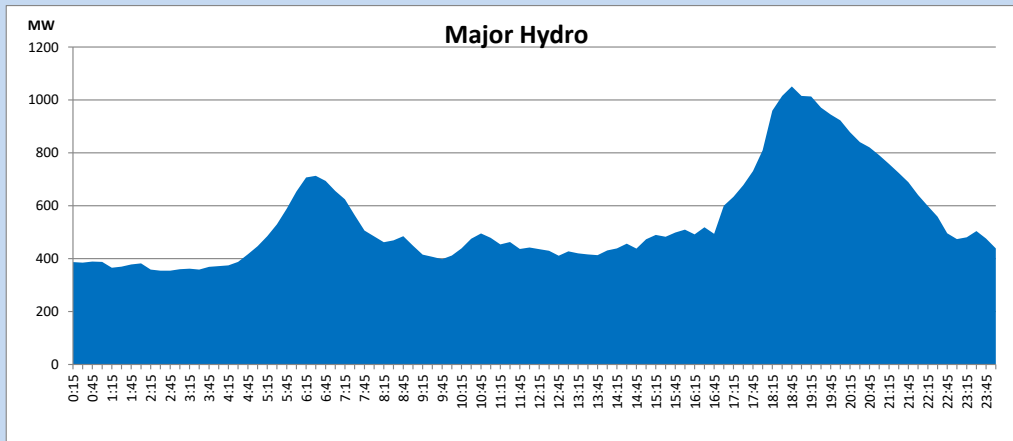
IPP Oil Plant Generation during

October 8, 2023



Major Hydro Generation during

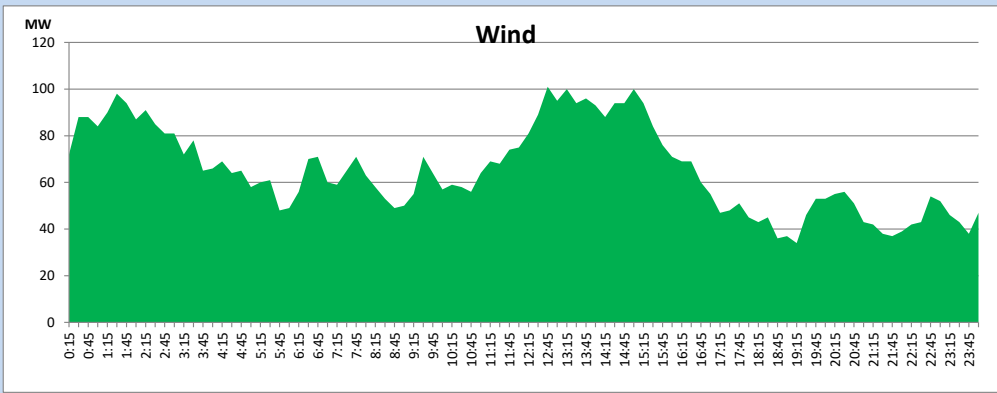
October 8, 2023



Wind Generation during

October 8, 2023

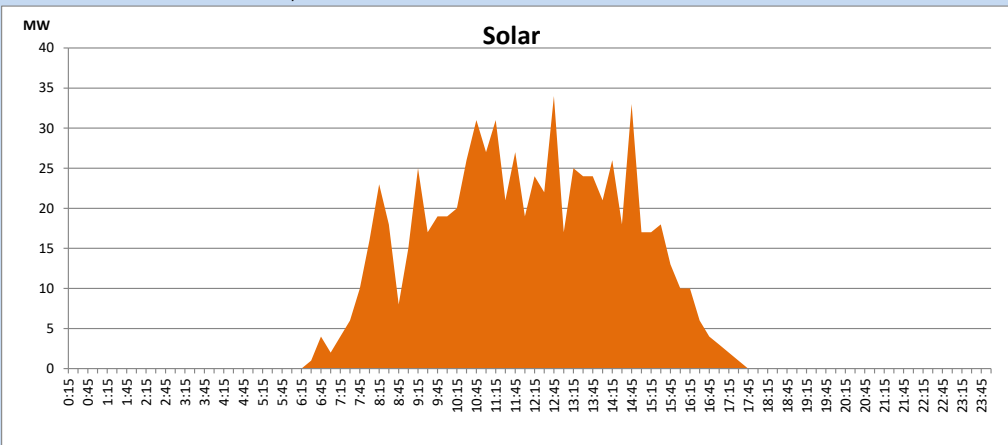
Based on Telemetered Power Stations only



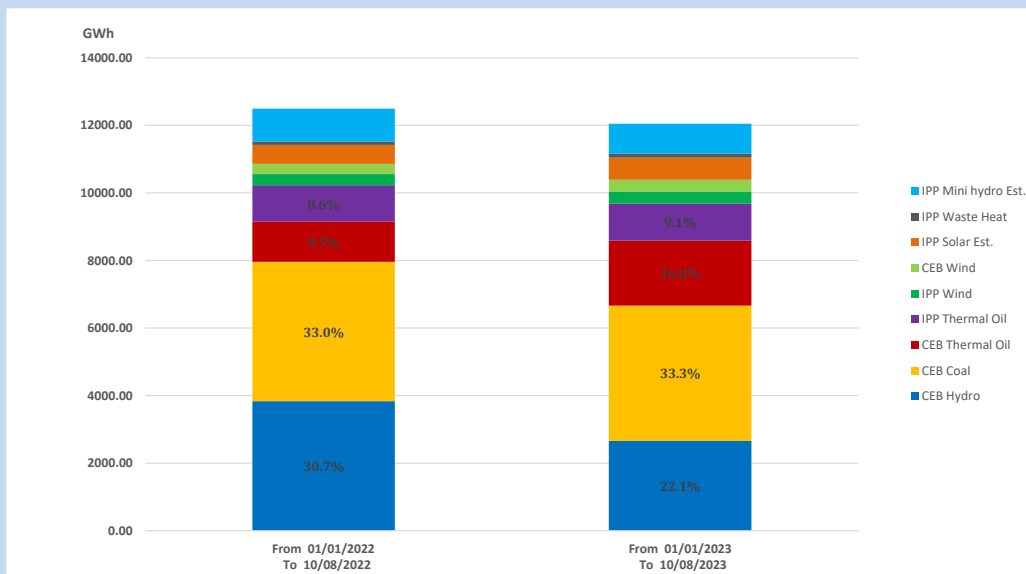
Solar Generation during

October 8, 2023

Based on Telemetered Power Stations only



15. Cumulative Dispatch Comparison with Last Year



Cumulative dispatch

From 01/01/2022 To 10/08/2022

12498 GWh

From 01/01/2023 To 10/08/2023

12047 GWh

The above figures are including contribution from roof top solar, non telemetered solar and mini hydro plants (figures have been adjusted based on the data from the CEB monthly review reports.)

Thermal Plant Fuel types

Table 08

Power Station	Primary Fuel
CEB Thermal	
Sapugaskanda 1	Heavy Fuel
Sapugaskanda 2	Heavy Fuel
Kelanitissa Small Gas Turbines	Auto Diesel
GT 7 - Kelanitissa	Auto Diesel
Kelanitissa CCY	Naphtha or Diesel
Lakvijaya 1	Coal
Lakvijaya 2	Coal
Lakvijaya 3	Coal
Uthuru Janani	Heavy Fuel
Barge CEB	Heavy Fuel
KCCPS -2	Auto Diesel

Power Station	Primary Fuel
Private Thermal	
West Coast	Auto Diesel / Heavy Fuel
ACE Matara	Heavy Fuel
ACE Embilipitiya	Heavy Fuel

Major Incidents reported during the day

October 8, 2023

- 1) Kukule spilling continues to present hour.
- 2) Polpitiya-Nawalapitiya Cct tripped at 16:35 hrs and A/R at poliptiya end, causing Nawalapitiya, Kiribathkumbura, Kurunegala, Ukuwela (132kV BB-02) & Bowatenna PS to be dead (Polpitiya-Kiribathkumbura cct was released for scheduled maintenance work).
Polpitiya-Nawalapitiya cct normalized at 16:45 hrs and all affected GSS & Feeders normalized by 16:47 hrs.
- 3) Kotmale-New Habarana both ccts tripped from both ends at 17:55 hrs and Kotmale-New Habarana cct-02 A/R from Kotmale end only. Subsequent attempt of normalizing Kotmale-New Habarana both ccts failed at New Habarana end. Kotmale-New Habarana both 220kV ccts normalized at 19.02hrs.
- 4) Kiribathkumbura- Nawalapitiya cct tripped & A/R at 17:56 hrs from both ends
- 5) At 02:19hrs (09.10.2023), system frequency dropped to 48.74Hz due to the tripping of embedded generation. Subsequently system recovered with the operation of UFLS Stage I and all affected feeders normalized by 02:30hrs (09.10.2023).