

Generation and Reservoirs Statistics

October 7, 2023



PUBLIC UTILITIES COMMISSION OF SRI LANKA

1. Daily Generation Mix in MWh

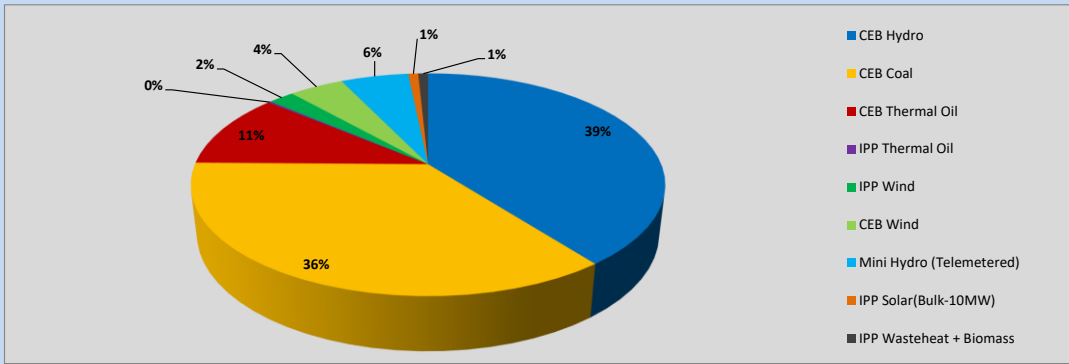


Table 01

	Generation (MWh)
CEB Hydro	13,838
CEB Coal	12,500
CEB Thermal Oil	3,797
IPP Thermal Oil	80
IPP Wind	738
CEB Wind	1,556
Mini Hydro (Telemetered)	1,935
IPP Solar (Bulk)	285
IPP Waste heat + Biomass	281
Total Generation (Excluding estimated figures)	35,010
* Estimated unserved energy	0
* Estimated Mini Hydro (Non telemetered)	2925
* Estimated IPP Solar PV (Bulk 1-10MW)	304
* Estimated Solar Roof Top PV	1930
Total Generation (Including estimated figures)	40,169

* Estimated figures of CEB generation report

Table 02

	Installed Capacity (MW)
CEB Hydro	1409
CEB Coal	810
CEB Thermal Oil	781
IPP Thermal Oil (West Coast, ACE Matara and ACE Embilipitiya)	387
IPP Wind	148
CEB Wind	100
Mini Hydro	416
IPP Waste heat + Biomass	50
IPP Solar	130
Rooftop Solar* (Ordinary)	267
Rooftop Solar* (LT Bulk)	256
Rooftop Solar* (HT Bulk)	61

Data Source - Monthly Review Report [May-2023]

2. Cumulative Dispatch

Following data excludes the contribution from roof top solar, non telemetered solar and mini hydro plants

Table 03 - Current Month

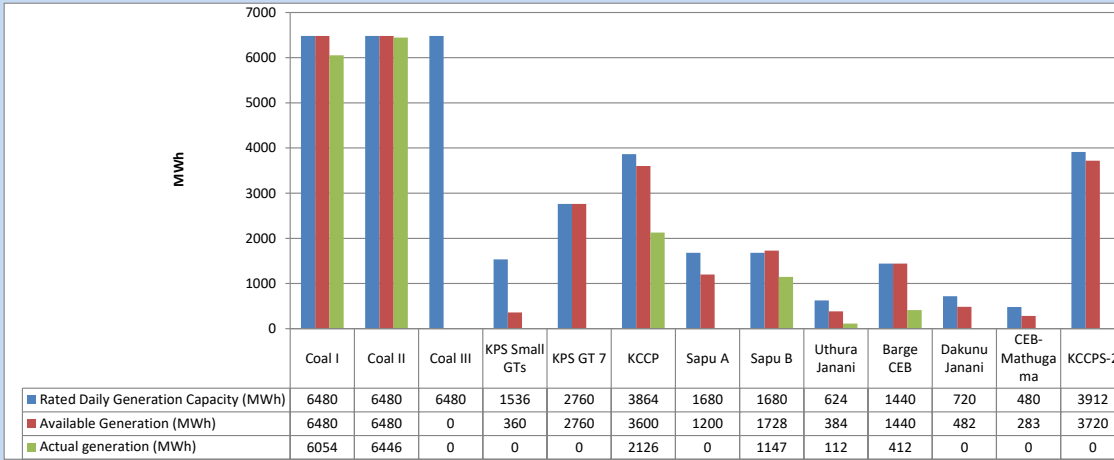
Category	Dispatch (GWh)	
CEB Hydro	89	35.00%
CEB Coal	84	33.08%
CEB Thermal Oil	35	13.92%
IPP Thermal	1	0.42%
SPP Wind	13	5.33%
CEB Wind	14	5.59%
Mini Hydro (Telemetered)	13	5.29%
IPP Solar(Bulk-10MW)	2	0.67%
IPP Waste heat + BMP	2	0.70%
Total	253	

Table 04 - Current Year

Category	Dispatch (GWh)	
CEB Hydro	2,654	24.54%
CEB Coal	4,003	37.01%
CEB Thermal Oil	1,929	17.83%
IPP Thermal	1,096	10.13%
SPP Wind	339	3.13%
CEB Wind	346	3.20%
Mini Hydro (Telemetered)	265	2.45%
IPP Solar(Bulk-10MW)	84	0.78%
IPP Waste heat	101	0.93%
Total	10,817	

3. CEB owned Thermal Plant Dispatch

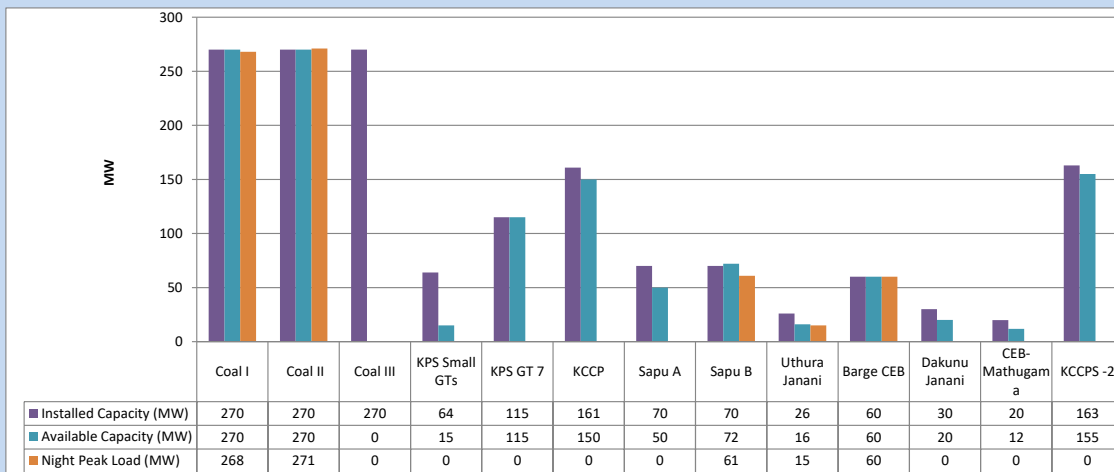
October 7, 2023



Available Generation is estimated based on plant availability at 6.00am on

October 8, 2023

4. CEB owned Thermal Plant Loading at the Night Peak

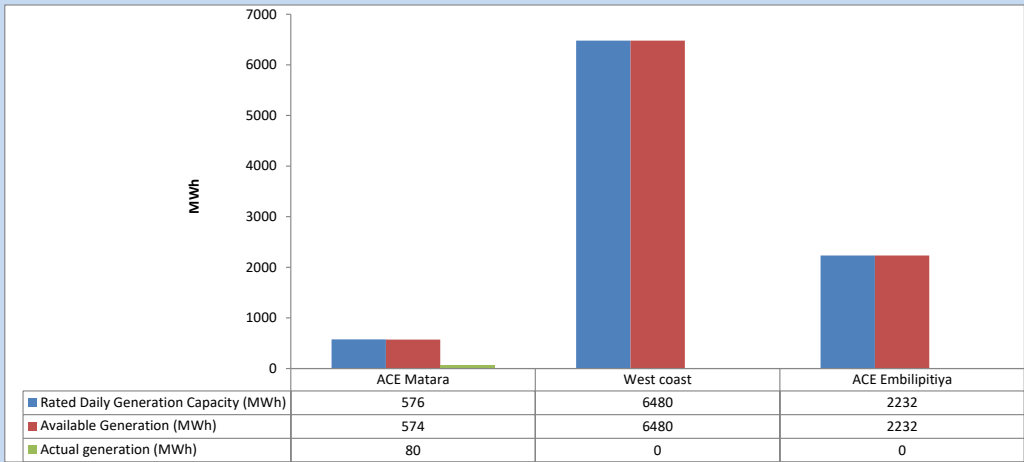


Plant availability is recorded at 6.00 am on

October 8, 2023

5. IPP owned Thermal Plant Dispatch

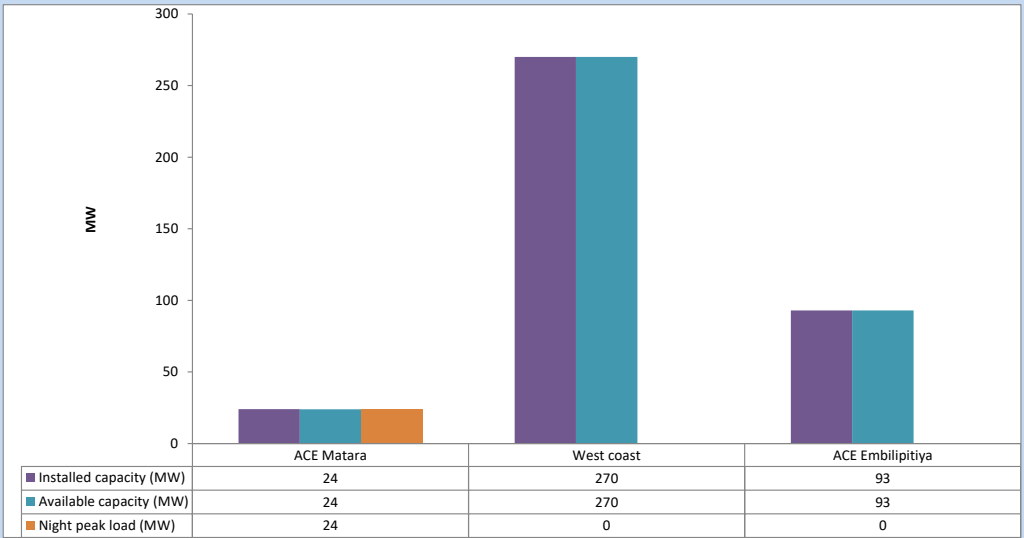
October 7, 2023



Available Generation is estimated based on plant availability at 6.00am on

October 8, 2023

6. IPP owned Thermal Plant Loading at the Night Peak

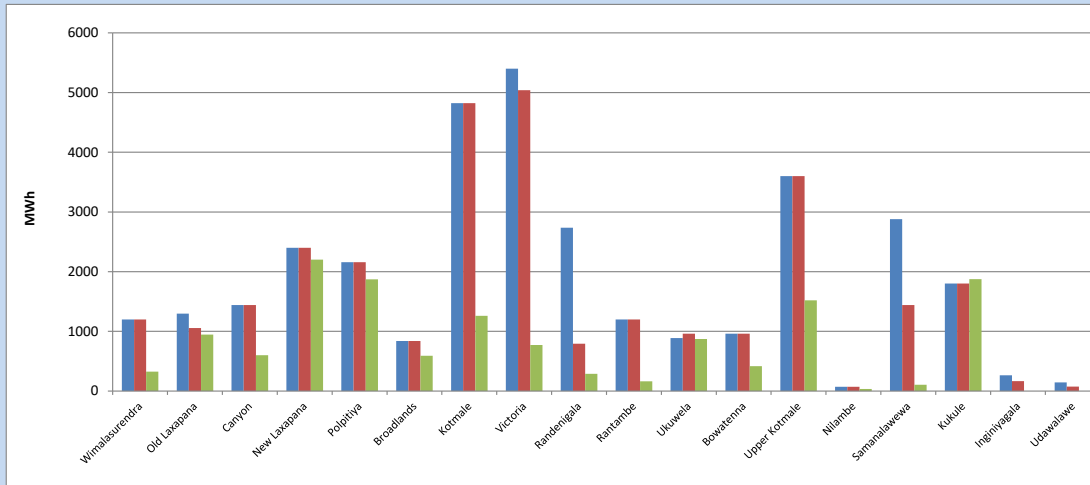


Plant availability is recorded at 6.00 am on

October 8, 2023

7. Major Hydro Plant Dispatch

October 7, 2023

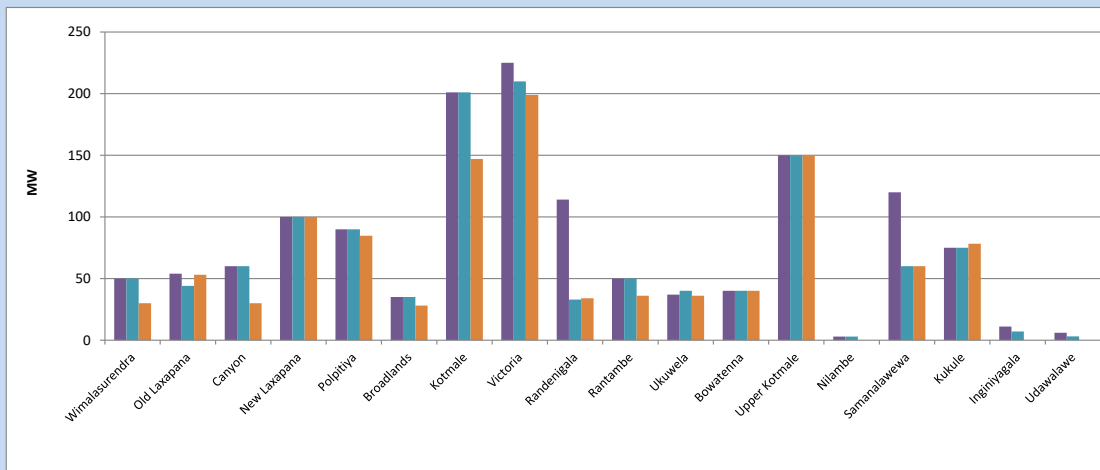


Available Generation is estimated based on plant availability at 6.00am on October 8, 2023
Broadlands power plant is operating in the Commissioning Stage

October 8, 2023

8. Major Hydro Plant Loading at Night Peak

October 7, 2023



Plant availability is recorded at 6.00 am on October 8, 2023
Broadlands power plant is operating in the Commissioning Stage

9. Summary of Major Plant performance

Table 05

Plant	Installed Capacity	Plant Availability	Night peak Load	Plant Dispatch
	(MW)	(MW)	(MW)	(MWh)
Wimalasurendra	50	50	30	326
Old Laxapana Canyon	54	44	53	945
New Laxapana	60	60	30	600
Polpitiya	100	100	100	2,202
Broadlands	90	90	85	1,870
Kotmale	35	35	28	590
Victoria	201	201	147	1,260
Randenigala	225	210	199	771
Rantambe	114	33	34	289
Ukuwela	50	50	36	165
Bowatenna	37	40	36	871
Upper Kotmale	40	40	40	417
Nilambe	150	150	150	1,519
Samanalawewa	3	3	0	34
Kukule	120	60	60	104
Inginiyagala	75	75	78	1,875
Udawalawe	11	7	0	0
Puttalam Coal I	6	3	0	0
Puttalam Coal II	270	270	268	6,054
Puttalam Coal III	270	270	271	6,446
KPS Small GTs	270	0	0	0
KPS GT 7	64	15	0	0
KCCP	115	115	0	0
Sapugaskanda A	161	150	0	2,126
Sapugaskanda B	70	50	0	0
Uthura Janani	70	72	61	1,147
Barge CEB	26	16	15	112
CEB-Hambantota	60	60	60	412
CEB-Mathugama	30	20	0	0
ACE Matara	20	12	0	0
Asia Power	24	24	24	80
KCCPS -2	50	0	0	0
West Coast	163	155	0	0
Nothern Power	270	270	0	0
ACE Embilipitiya	36	0	0	0
Total	93	93	0	0
	3,483	2,843	1,965	35,010

Plant availability is the availability recorded at 6 am on

October 8, 2023

10. Contribution to the Night Peak in MW

October 7, 2023

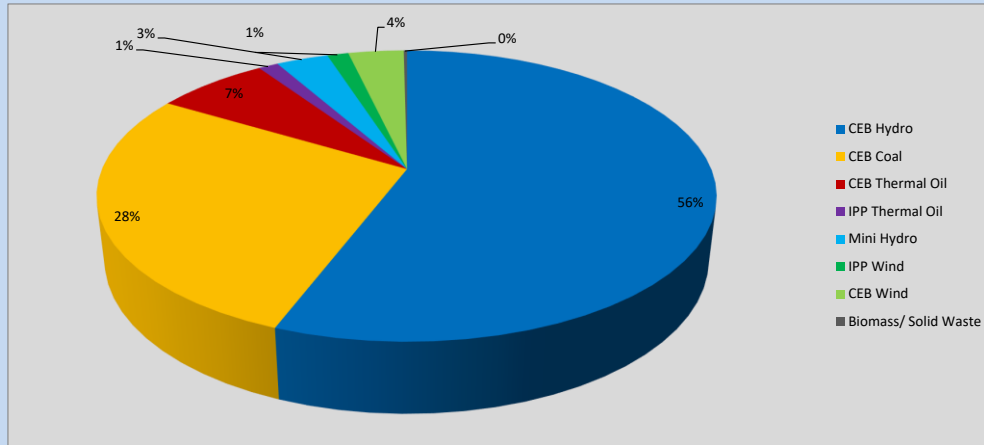


Table 06

CEB Hydro	1085	MW
CEB Coal	539	MW
CEB Thermal Oil	136	MW
IPP Thermal Oil	24	MW
Mini Hydro (Telemetered)	63	MW
IPP Wind	25.8	MW
CEB Wind	67.1	MW
Biomass/ Solid Waste	4	MW

Recorded Peak Demand Data

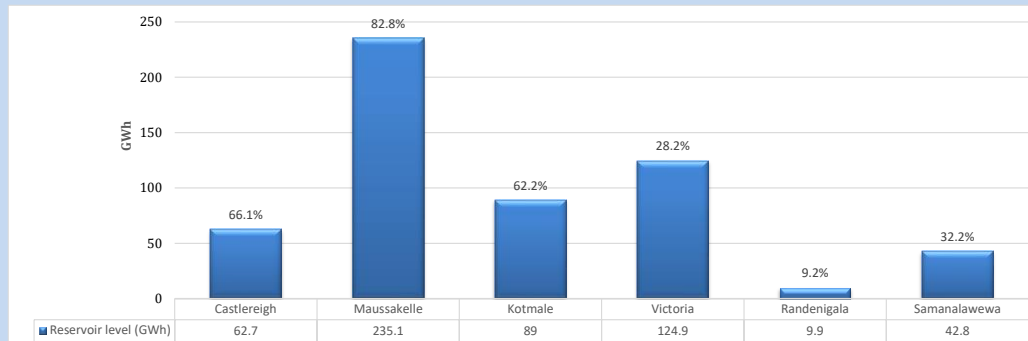
Table 07

Night Peak*	1,944	MW
Day Peak Maximum Demand	1,630	MW
Day Peak Minimum Demand	1,340	MW
Off Peak Minimum Demand	1,077	MW

Above figures are excluding contribution from roof top solar, non telemetered solar and mini hydro plants

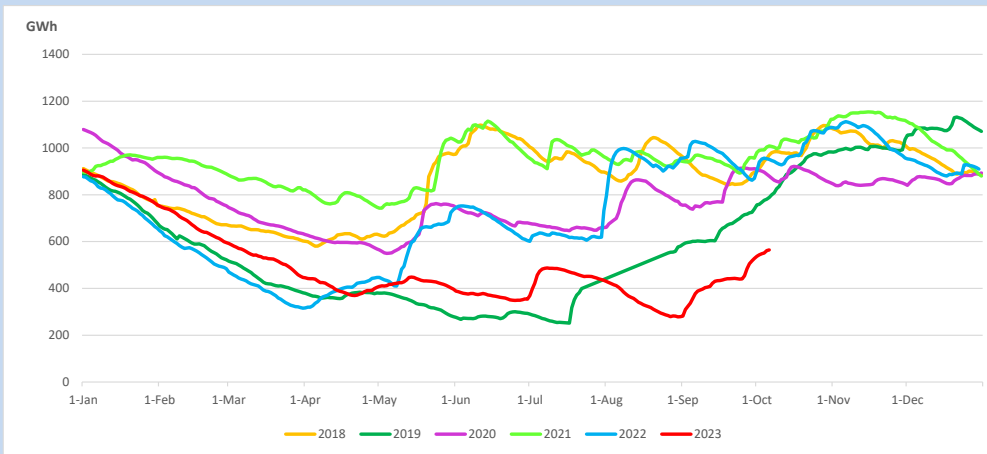
Reservoir Levels -

as at 06.00 Hr on October 8, 2023

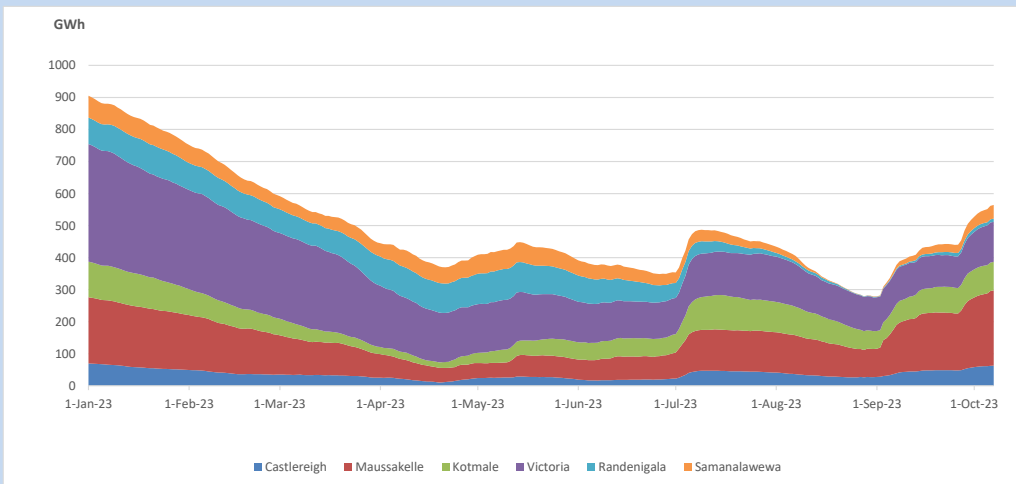


Total Reservoir Level 564.4 GWh
 % of Total capacity 46.8%

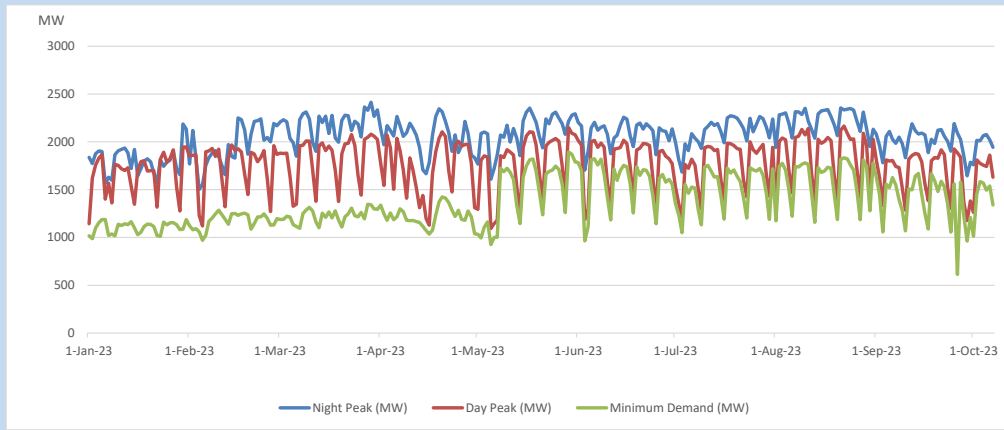
11. Comparison of Total Reservoir Storage Levels with Past Years



12. Variation of Major Hydro Reservoir Levels in the current year (GWh)



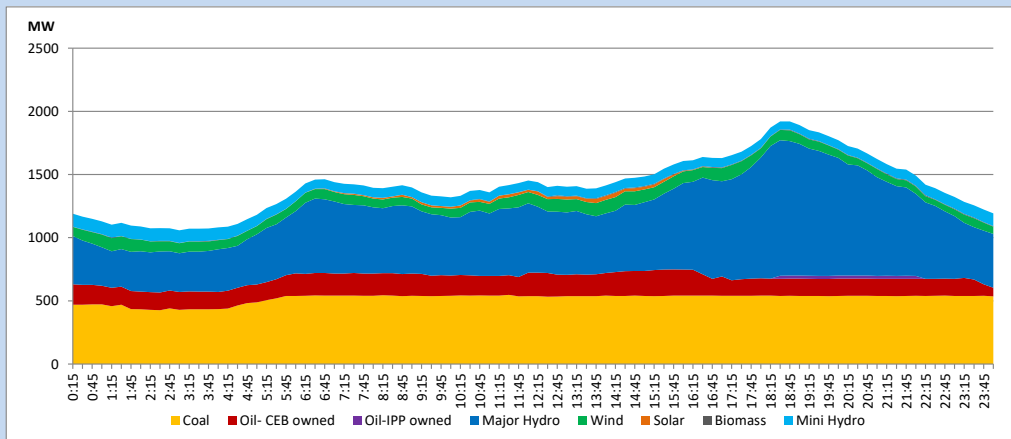
13. Variation of Demand during the current year



The above figures are excluding contribution from roof top solar, non telemetered solar and mini hydro plants

14. Daily Load Curve

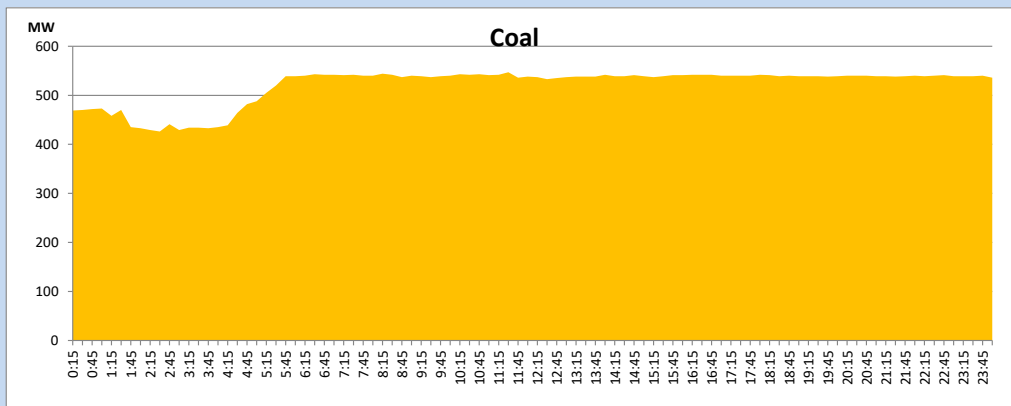
October 7, 2023



Solar and wind data is based on Telemetered Power Stations only

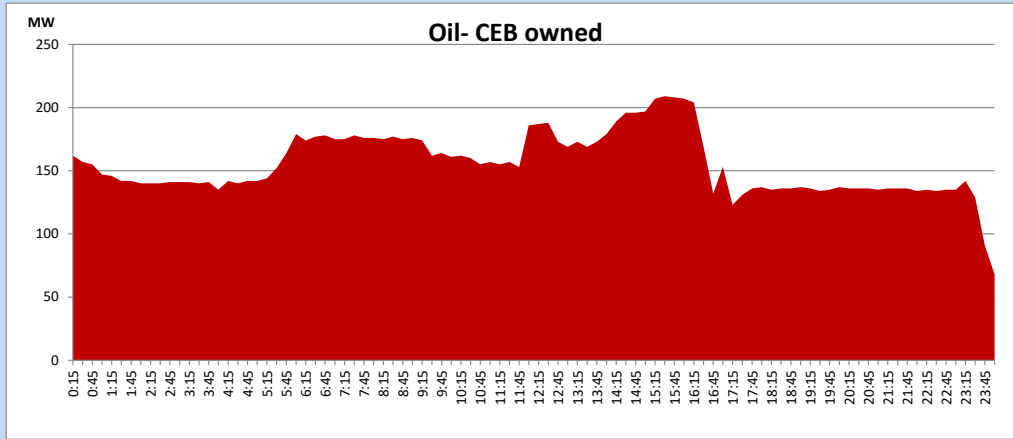
Coal Generation during

October 7, 2023



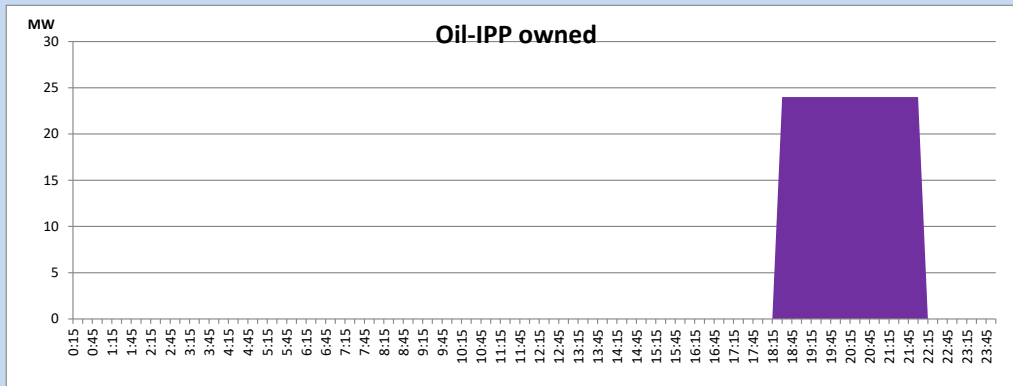
CEB Oil Plant Generation during

October 7, 2023



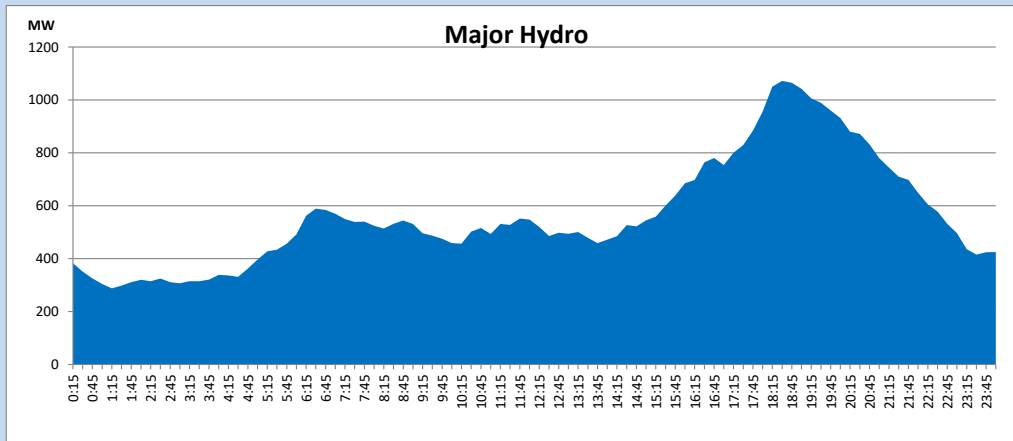
IPP Oil Plant Generation during

October 7, 2023



Major Hydro Generation during

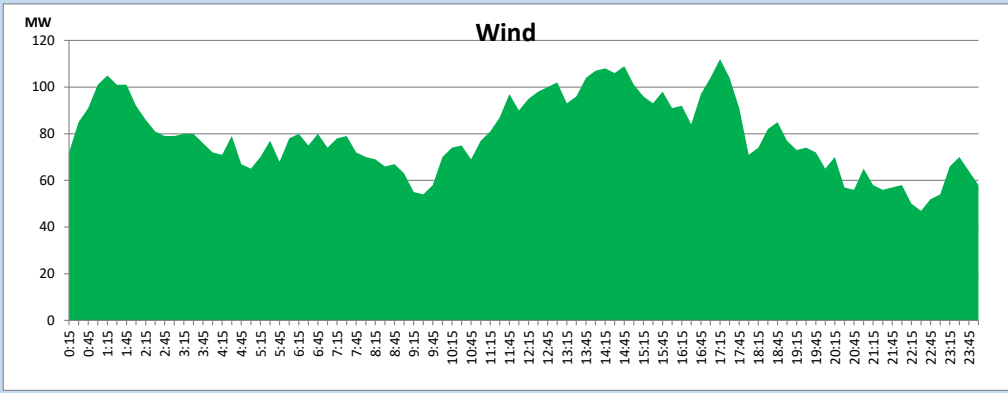
October 7, 2023



Wind Generation during

October 7, 2023

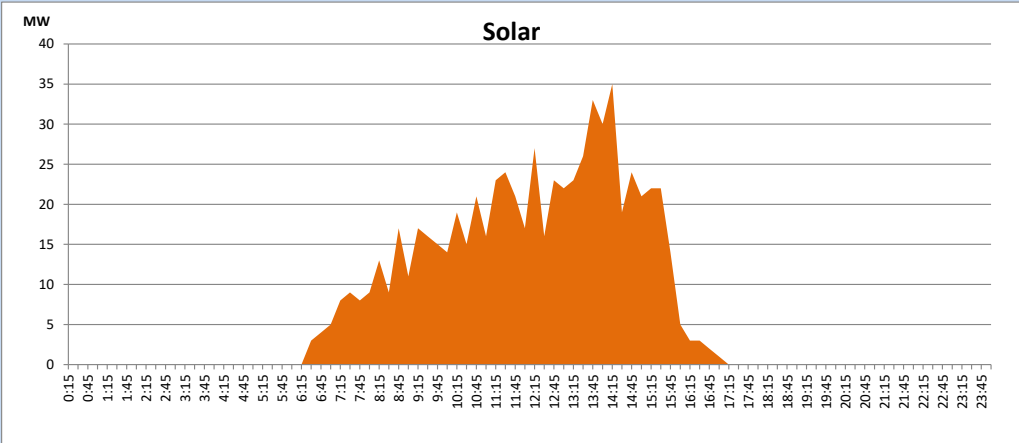
Based on Telemetered Power Stations only



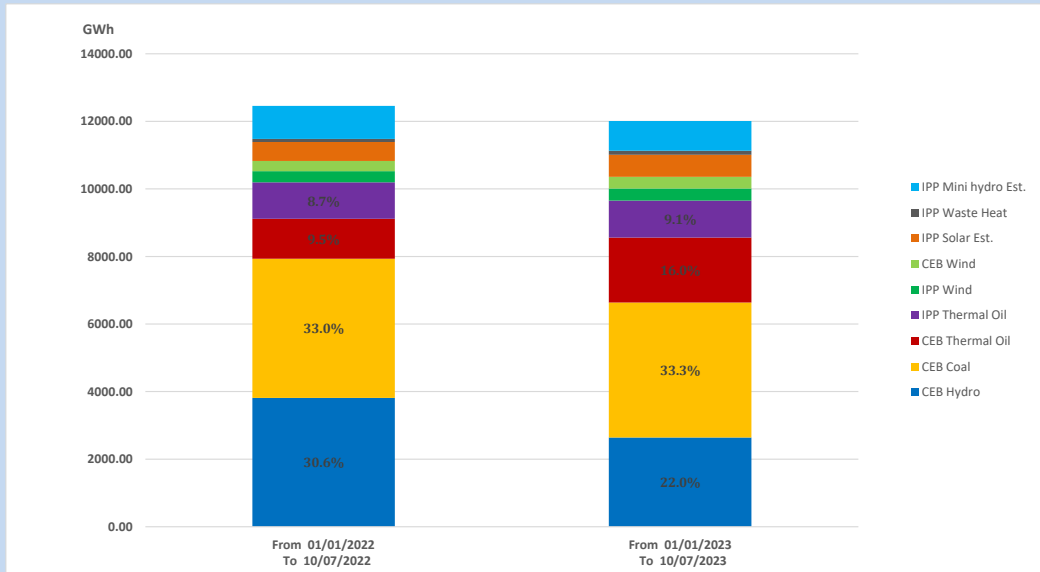
Solar Generation during

October 7, 2023

Based on Telemetered Power Stations only



15. Cumulative Dispatch Comparison with Last Year



Cumulative dispatch
 From 01/01/2022 To 10/07/2022
 From 01/01/2023 To 10/07/2023

12456 GWh
 12010 GWh

The above figures are including contribution from roof top solar, non telemetered solar and mini hydro plants (figures have been adjusted based on the data from the CEB monthly review reports.)

Thermal Plant Fuel types

Table 08

Power Station	Primary Fuel
CEB Thermal	
Sapugaskanda 1	Heavy Fuel
Sapugaskanda 2	Heavy Fuel
Kelanitissa Small Gas Turbines	Auto Diesel
GT 7 - Kelanitissa	Auto Diesel
Kelanitissa CCY	Naphtha or Diesel
Lakvijaya 1	Coal
Lakvijaya 2	Coal
Lakvijaya 3	Coal
Uthuru Janani	Heavy Fuel
Barge CEB	Heavy Fuel
KCCPS -2	Auto Diesel

Power Station	Primary Fuel
Private Thermal	
West Coast	Auto Diesel / Heavy Fuel
ACE Matara	Heavy Fuel
ACE Embilipitiya	Heavy Fuel

Major Incidents reported during the day

October 7, 2023

- 1) Kukule spilling continues to present hour.
- 2) Ampara - Mahiyanganaya 132kV cct tripped only from Mahiyanganaya end at 14:42hrs due to operation of distance protection.
Amapara - Mahiyanganaya 132kV cct restored at 14:54hrs.
- 3) KCCP stopped at 17:09hrs due to the unavailability of Naphtha fuel stocks.
- 4) O'Laxapana unit 02 tripped at 1:33hrs(08/10/2023), due to unit controller malfunction, rejecting 3MW from the system. O'Laxapana unit 02 resumed generation at 2:26hrs(08/10/2023). O'Laxapana unit 02 again tripped at 03:29hrs(08/10/2023) due to unit controller malfunction. O' Laxapana unit 02 is yet to resume generation.