

Generation and Reservoirs Statistics

October 5, 2023



PUBLIC UTILITIES COMMISSION OF SRI LANKA

1. Daily Generation Mix in MWh

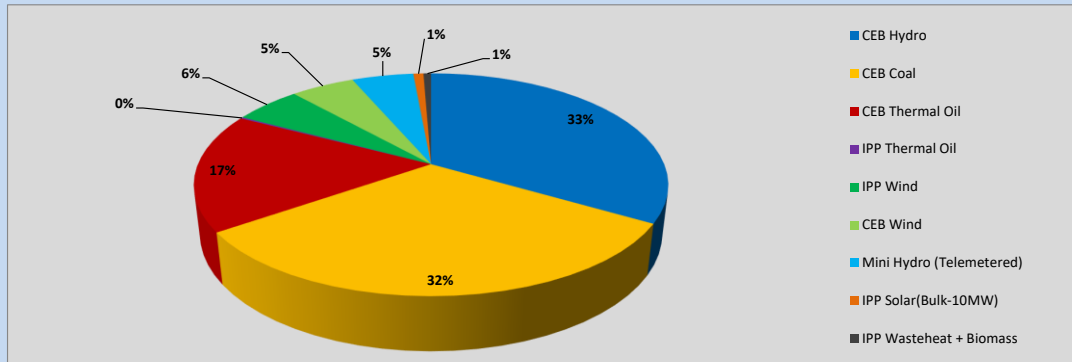


Table 01

	Generation (MWh)
CEB Hydro	12,655
CEB Coal	12,137
CEB Thermal Oil	6,548
IPP Thermal Oil	75
IPP Wind	2,080
CEB Wind	1,973
Mini Hydro (Telemetered)	1,904
IPP Solar (Bulk)	314
IPP Waste heat + Biomass	236
Total Generation (Excluding estimated figures)	37,922
* Estimated unserved energy	0
* Estimated Mini Hydro (Non telemetered)	2956
* Estimated IPP Solar PV (Bulk 1-10MW)	304
* Estimated Solar Roof Top PV	1930
Total Generation (Including estimated figures)	43,112

* Estimated figures of CEB generation report

Table 02

	Installed Capacity (MW)
CEB Hydro	1409
CEB Coal	810
CEB Thermal Oil	781
IPP Thermal Oil (West Coast, ACE Matara and ACE Embilipitiya)	387
IPP Wind	148
CEB Wind	100
Mini Hydro	416
IPP Waste heat + Biomass	50
IPP Solar	130
Rooftop Solar* (Ordinary)	267
Rooftop Solar* (LT Bulk)	256
Rooftop Solar* (HT Bulk)	61

Data Source - Monthly Review Report [May-2023]

2. Cumulative Dispatch

Following data excludes the contribution from roof top solar, non telemetered solar and mini hydro plants

Table 03 - Current Month

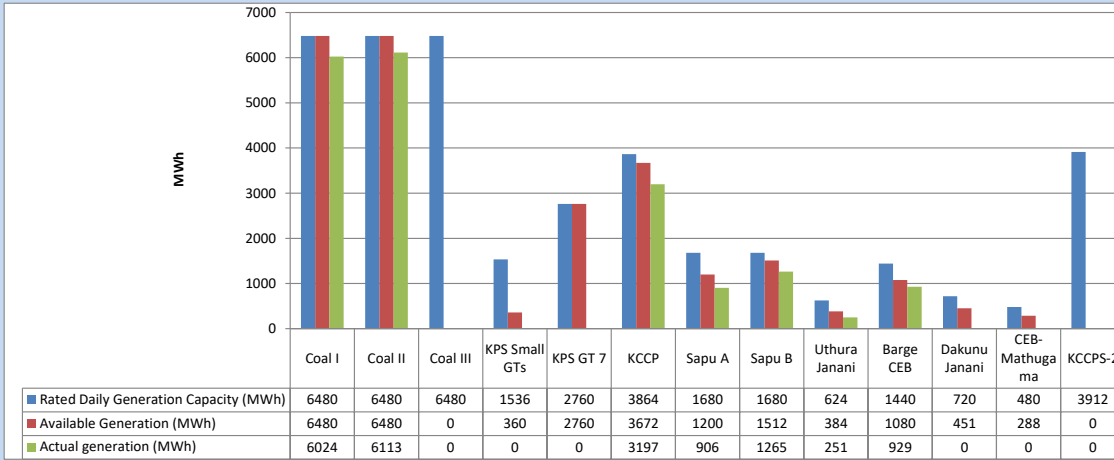
Category	Dispatch (GWh)	
CEB Hydro	61	34.03%
CEB Coal	59	32.81%
CEB Thermal Oil	25	13.87%
IPP Thermal	1	0.45%
SPP Wind	11	6.08%
CEB Wind	11	6.02%
Mini Hydro (Telemetered)	10	5.38%
IPP Solar(Bulk-10MW)	1	0.65%
IPP Waste heat + BMP	1	0.70%
Total	180	

Table 04 - Current Year

Category	Dispatch (GWh)	
CEB Hydro	2,627	24.45%
CEB Coal	3,978	37.03%
CEB Thermal Oil	1,919	17.86%
IPP Thermal	1,096	10.20%
SPP Wind	336	3.13%
CEB Wind	343	3.19%
Mini Hydro (Telemetered)	261	2.43%
IPP Solar(Bulk-10MW)	84	0.78%
IPP Waste heat	101	0.94%
Total	10,744	

3. CEB owned Thermal Plant Dispatch

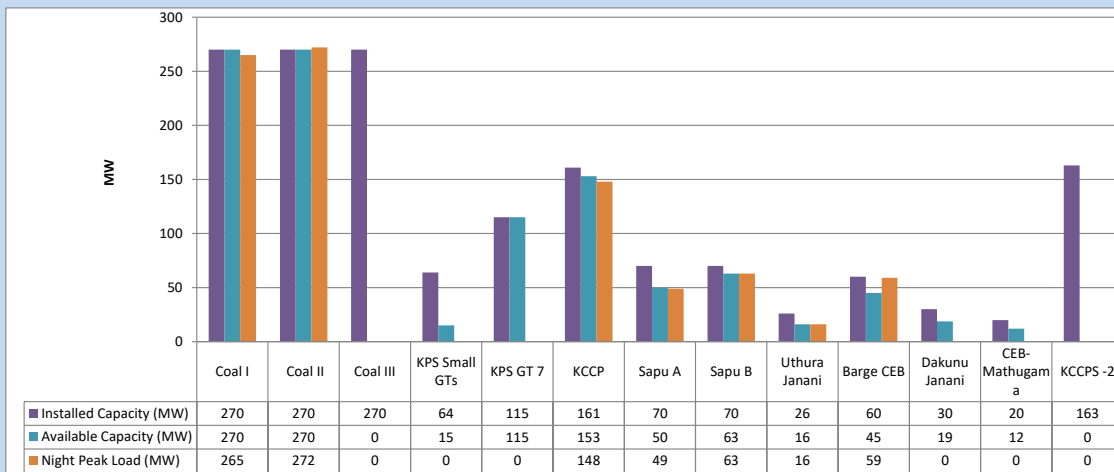
October 5, 2023



Available Generation is estimated based on plant availability at 6.00am on

October 6, 2023

4. CEB owned Thermal Plant Loading at the Night Peak

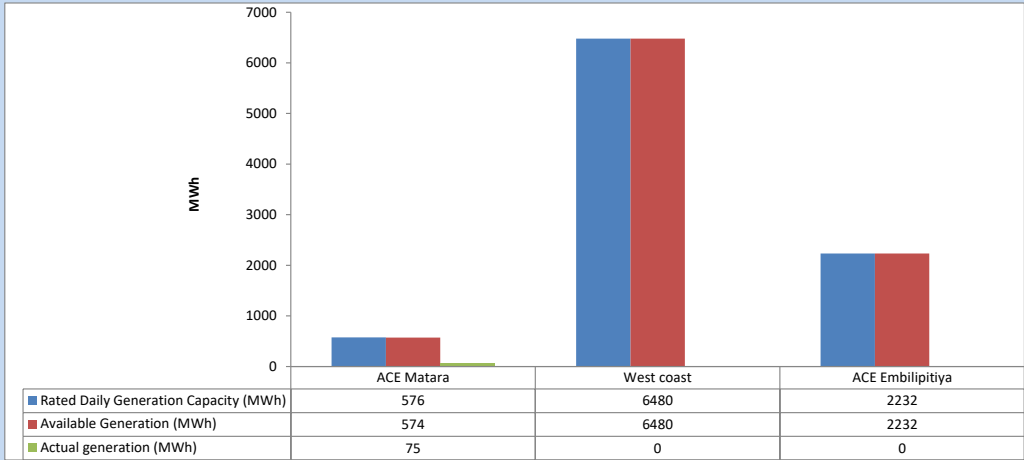


Plant availability is recorded at 6.00 am on

October 6, 2023

5. IPP owned Thermal Plant Dispatch

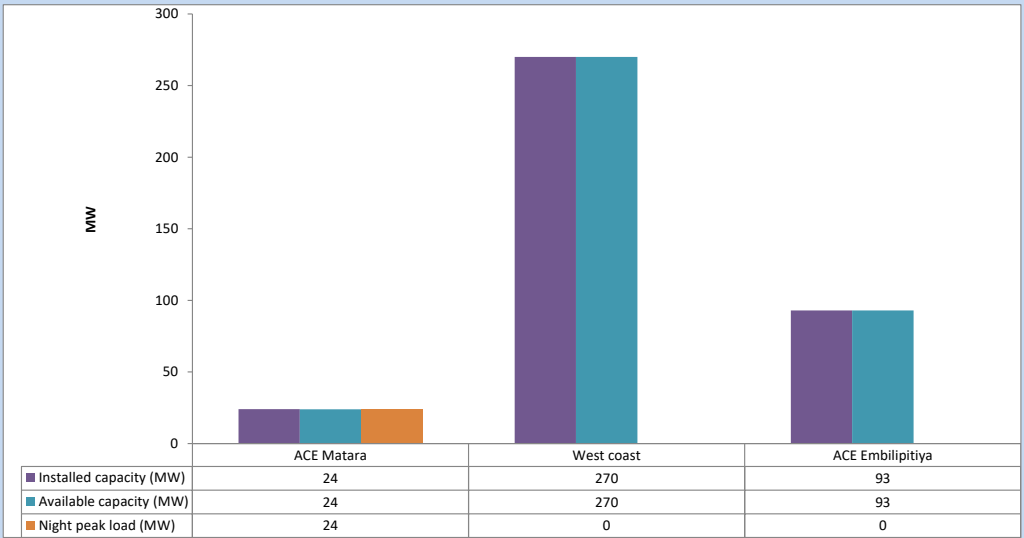
October 5, 2023



Available Generation is estimated based on plant availability at 6.00am on

October 6, 2023

6. IPP owned Thermal Plant Loading at the Night Peak

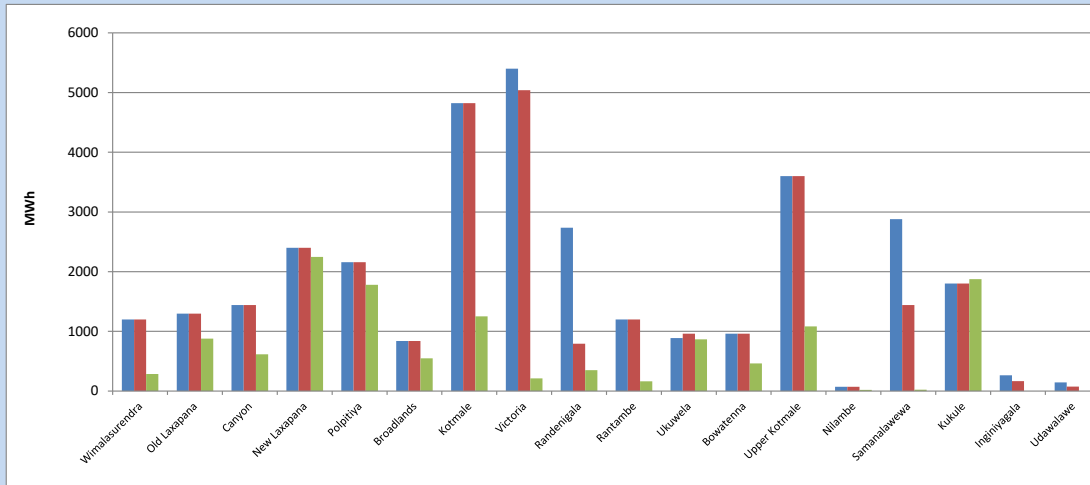


Plant availability is recorded at 6.00 am on

October 6, 2023

7. Major Hydro Plant Dispatch

October 5, 2023

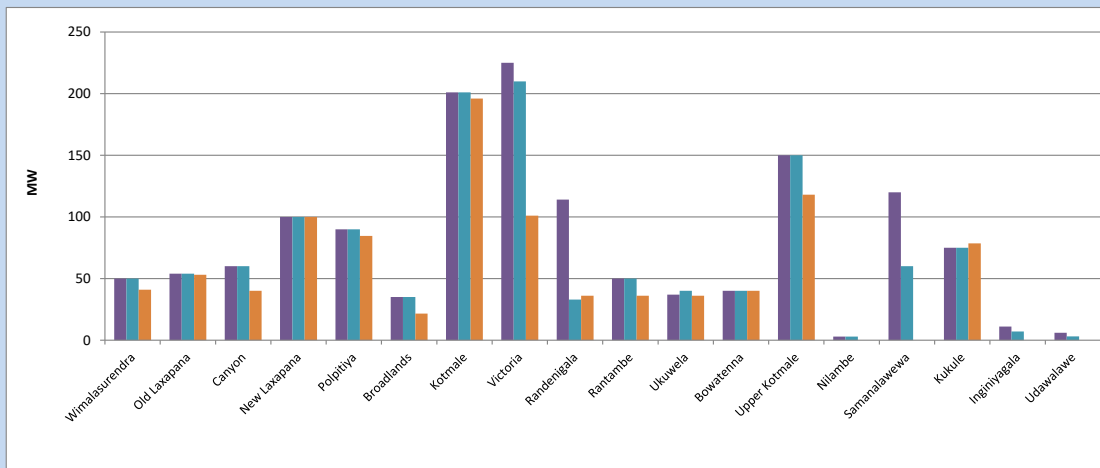


Available Generation is estimated based on plant availability at 6.00am on October 6, 2023
Broadlands power plant is operating in the Commissioning Stage

October 6, 2023

8. Major Hydro Plant Loading at Night Peak

October 5, 2023



Plant availability is recorded at 6.00 am on October 6, 2023
Broadlands power plant is operating in the Commissioning Stage

9. Summary of Major Plant performance

Table 05

Plant	Installed Capacity	Plant Availability	Night peak Load	Plant Dispatch
	(MW)	(MW)	(MW)	(MWh)
Wimalasurendra	50	50	41	285
Old Laxapana Canyon	54	54	53	879
New Laxapana	60	60	40	617
Polpitiya	100	100	100	2,248
Broadlands	90	90	85	1,780
Kotmale	35	35	22	547
Kotmale	201	201	196	1,250
Victoria	225	210	101	213
Randenigala	114	33	36	349
Rantambe	50	50	36	162
Ukuwela	37	40	36	866
Bowatenna	40	40	40	462
Upper Kotmale	150	150	118	1,083
Nilambe	3	3	0	19
Samanalawewa	120	60	0	22
Kukule	75	75	79	1,873
Inginiyagala	11	7	0	0
Udawalawe	6	3	0	0
Puttalam Coal I	270	270	265	6,024
Puttalam Coal II	270	270	272	6,113
Puttalam Coal III	270	0	0	0
KPS Small GTs	64	15	0	0
KPS GT 7	115	115	0	0
KCCP	161	153	148	3,197
Sapugaskanda A	70	50	49	906
Sapugaskanda B	70	63	63	1,265
Uthura Janani	26	16	16	251
Barge CEB	60	45	59	929
CEB-Hambantota	30	19	0	0
CEB-Mathugama	20	12	0	0
ACE Matara	24	24	24	75
Asia Power	50	0	0	0
KCCPS -2	163	0	0	0
West Coast	270	270	0	0
Nothern Power	36	0	0	0
ACE Embilipitiya	93	93	0	0
Total	3,483	2,676	2,098	37,922

Plant availability is the availability recorded at 6 am on

October 6, 2023

10. Contribution to the Night Peak in MW

October 5, 2023

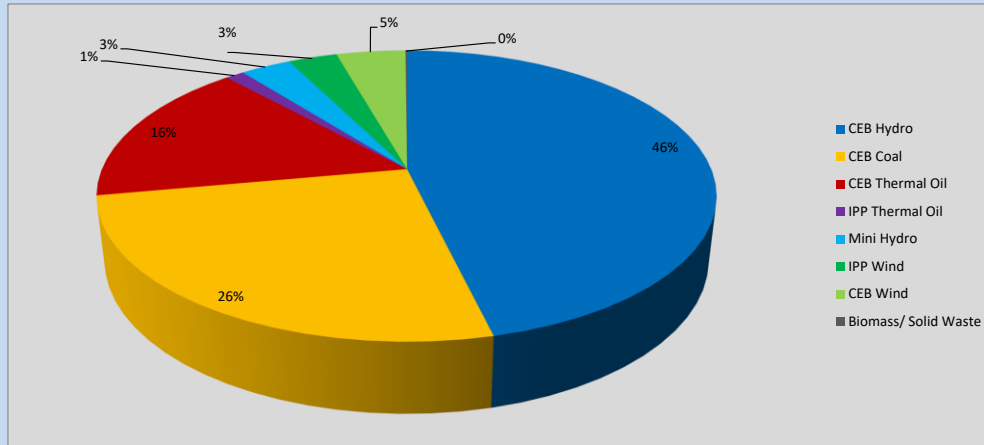


Table 06

CEB Hydro	961	MW
CEB Coal	537	MW
CEB Thermal Oil	335	MW
IPP Thermal Oil	24	MW
Mini Hydro (Telemetered)	65	MW
IPP Wind	63.4	MW
CEB Wind	89.5	MW
Biomass/ Solid Waste	2	MW

Recorded Peak Demand Data

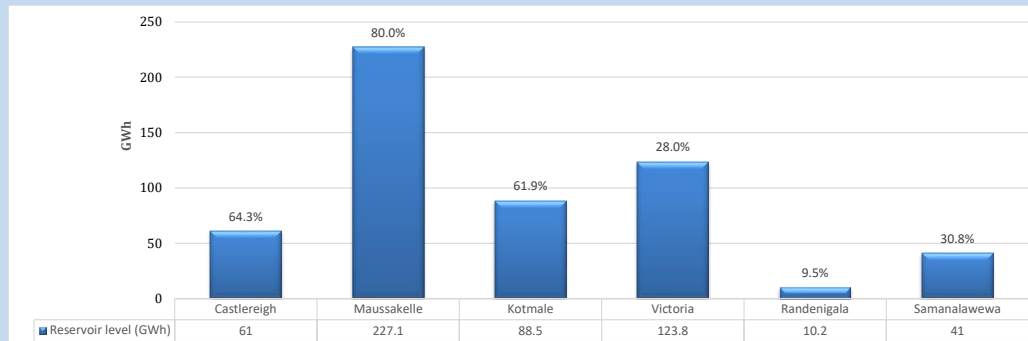
Table 07

Night Peak*	2,077	MW
Day Peak Maximum Demand	1,744	MW
Day Peak Minimum Demand	1,496	MW
Off Peak Minimum Demand	1,074	MW

Above figures are excluding contribution from roof top solar, non telemetered solar and mini hydro plants

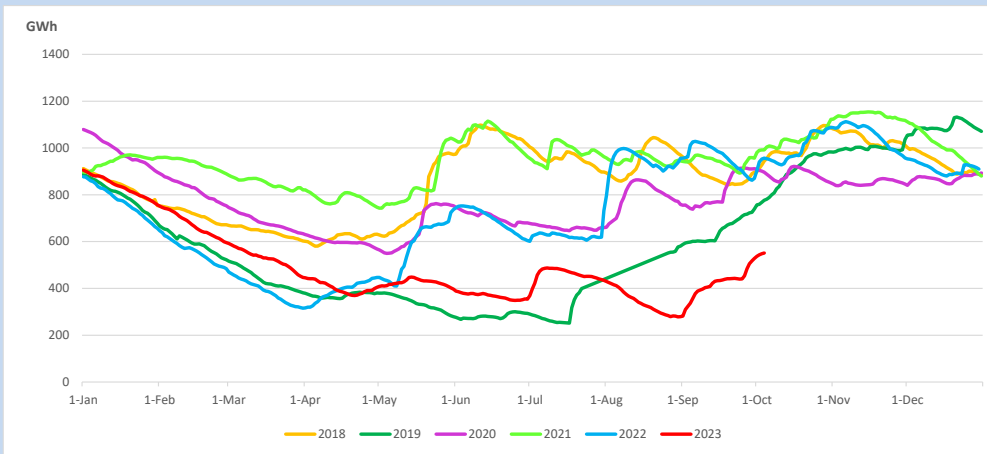
Reservoir Levels -

as at 06.00 Hr on October 6, 2023

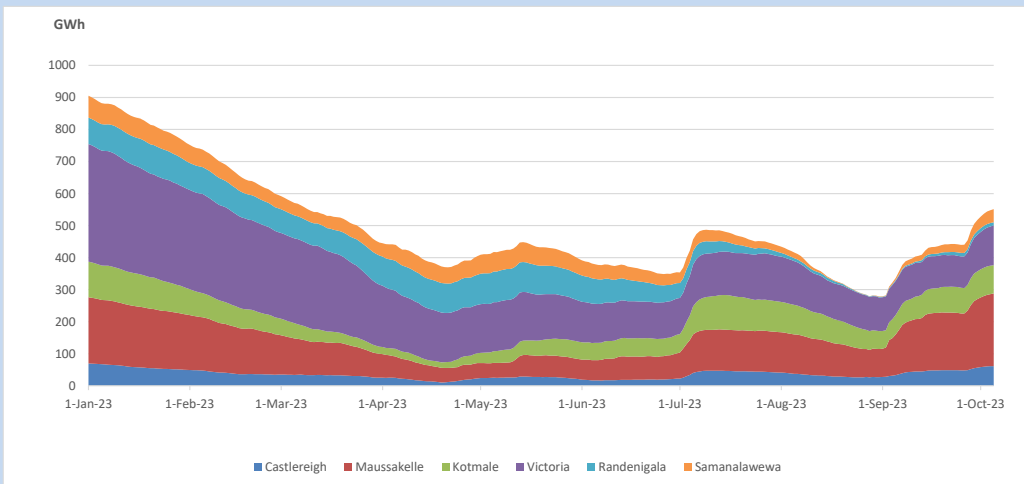


Total Reservoir Level 551.6 GWh
% of Total capacity 45.8%

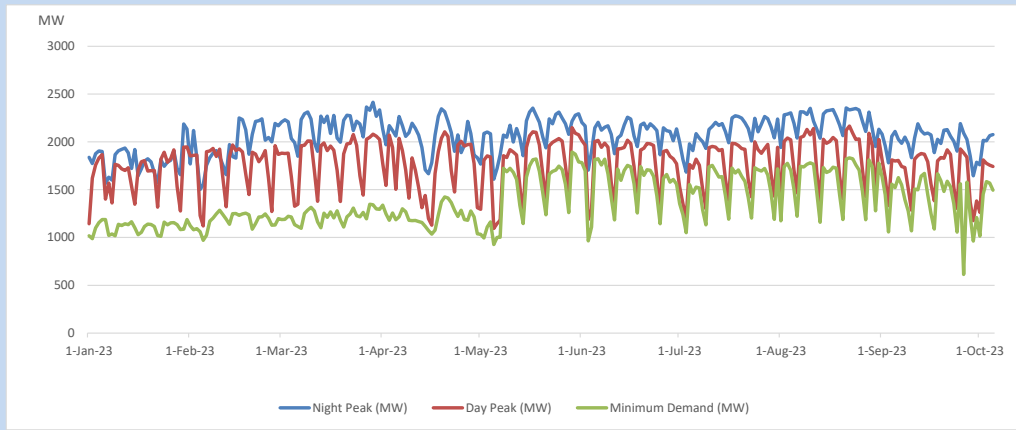
11. Comparison of Total Reservoir Storage Levels with Past Years



12. Variation of Major Hydro Reservoir Levels in the current year (GWh)



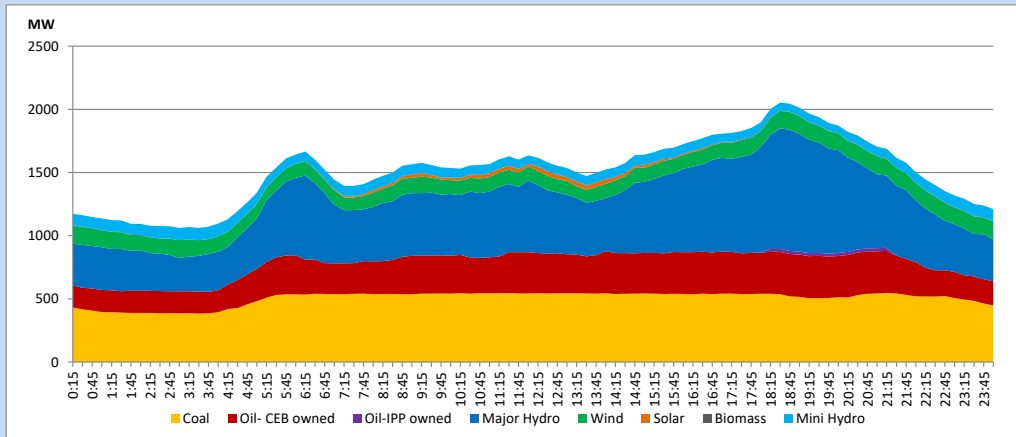
13. Variation of Demand during the current year



The above figures are excluding contribution from roof top solar, non telemetered solar and mini hydro plants

14. Daily Load Curve

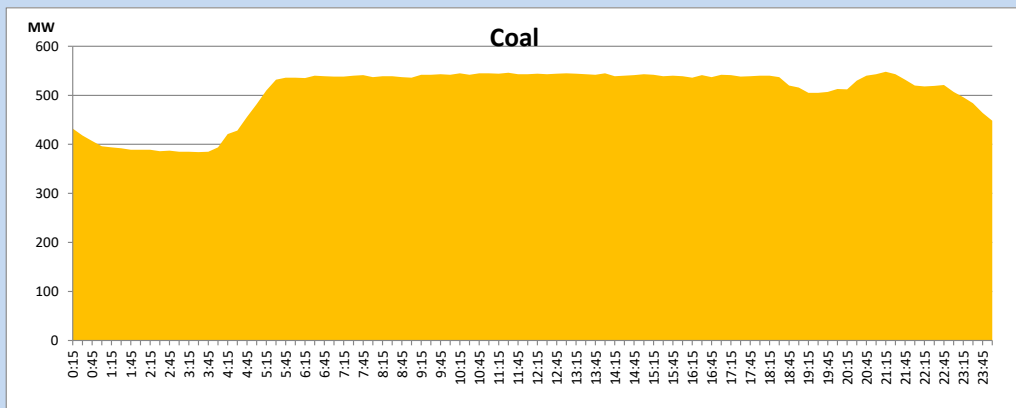
October 5, 2023



Solar and wind data is based on Telemetered Power Stations only

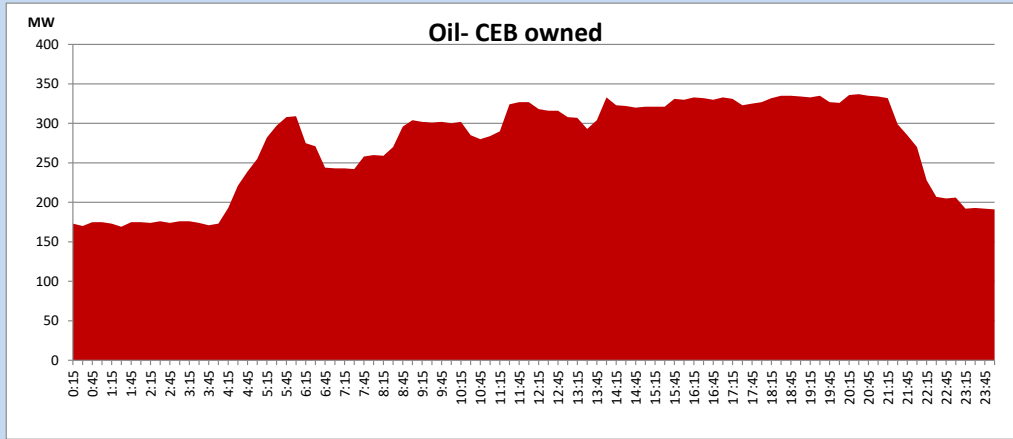
Coal Generation during

October 5, 2023



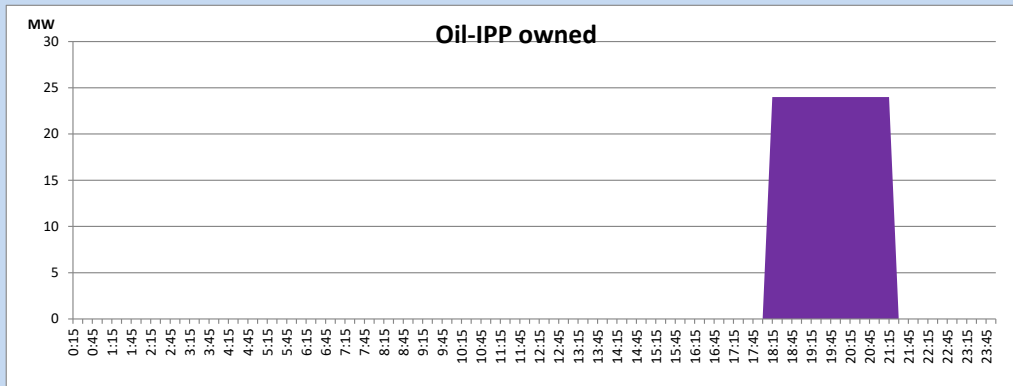
CEB Oil Plant Generation during

October 5, 2023



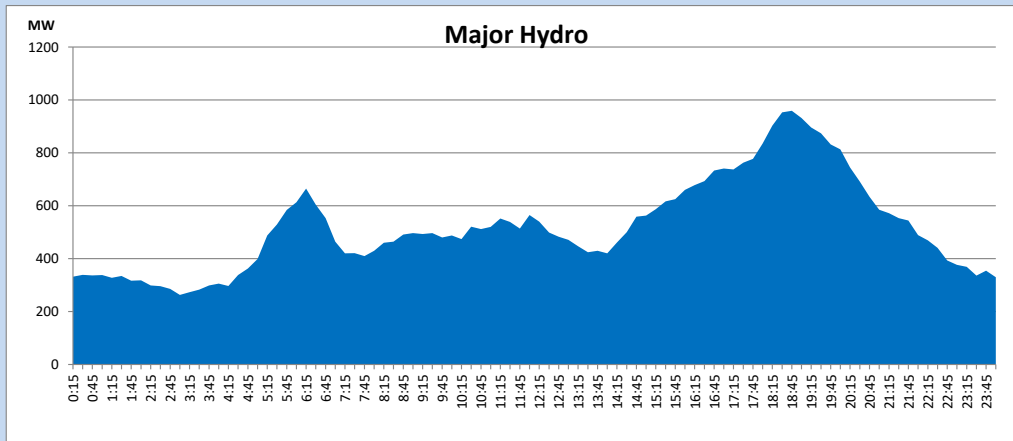
IPP Oil Plant Generation during

October 5, 2023



Major Hydro Generation during

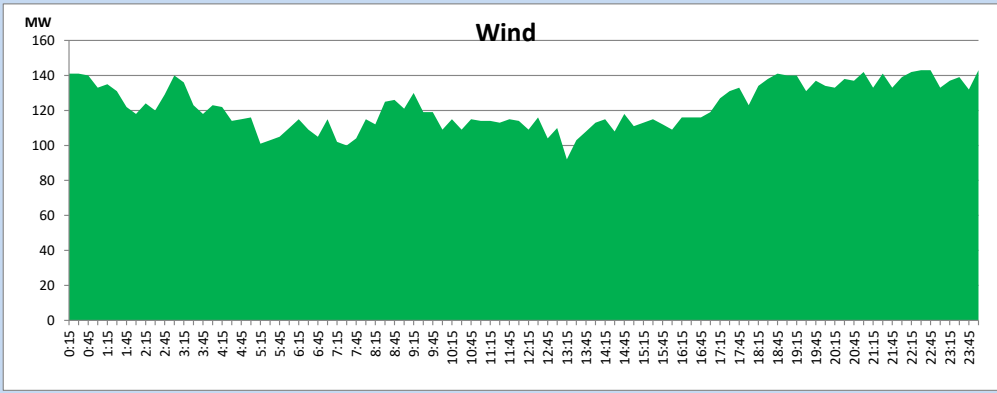
October 5, 2023



Wind Generation during

October 5, 2023

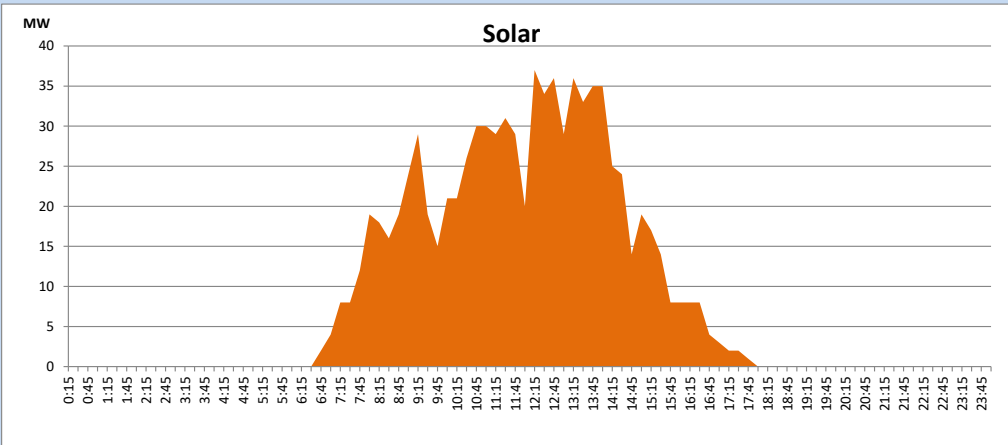
Based on Telemetered Power Stations only



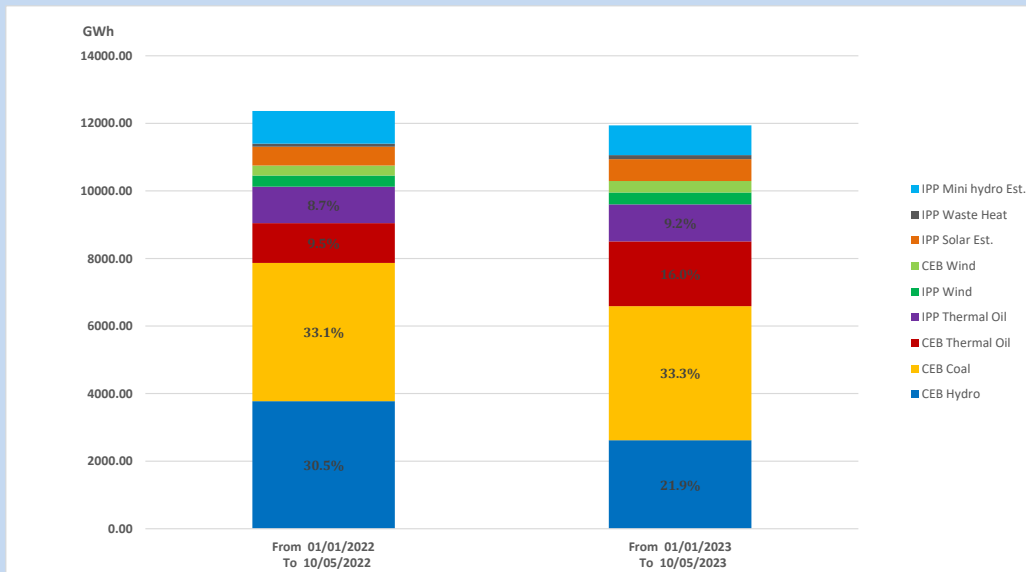
Solar Generation during

October 5, 2023

Based on Telemetered Power Stations only



15. Cumulative Dispatch Comparison with Last Year



Cumulative dispatch

From 01/01/2022 To 10/05/2022

12365 GWh

From 01/01/2023 To 10/05/2023

11927 GWh

The above figures are including contribution from roof top solar, non telemetered solar and mini hydro plants (figures have been adjusted based on the data from the CEB monthly review reports.)

Thermal Plant Fuel types

Table 08

Power Station	Primary Fuel
CEB Thermal	
Sapugaskanda 1	Heavy Fuel
Sapugaskanda 2	Heavy Fuel
Kelanitissa Small Gas Turbines	Auto Diesel
GT 7 - Kelanitissa	Auto Diesel
Kelanitissa CCY	Naphtha or Diesel
Lakvijaya 1	Coal
Lakvijaya 2	Coal
Lakvijaya 3	Coal
Uthuru Janani	Heavy Fuel
Barge CEB	Heavy Fuel
KCCPS -2	Auto Diesel

Power Station	Primary Fuel
Private Thermal	
West Coast	Auto Diesel / Heavy Fuel
ACE Matara	Heavy Fuel
ACE Embilipitiya	Heavy Fuel

Major Incidents reported during the day

October 5, 2023

- 1) Kukule spilling continues to