

Generation and Reservoirs Statistics

October 4, 2023



PUBLIC UTILITIES COMMISSION OF SRI LANKA

1. Daily Generation Mix in MWh

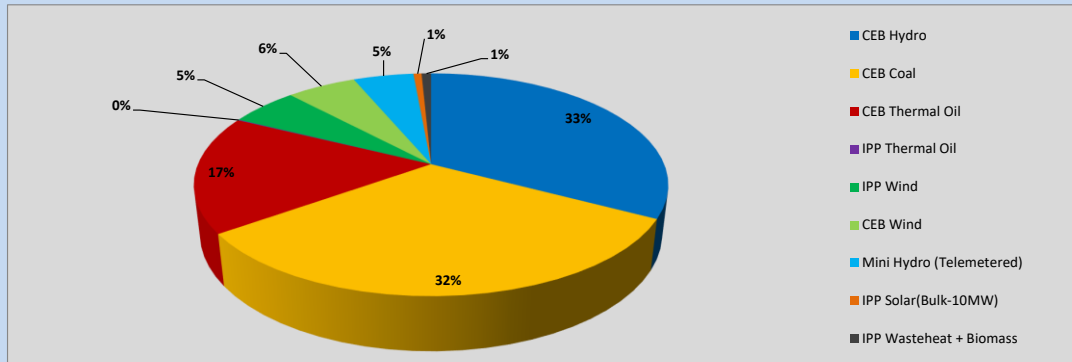


Table 01

	Generation (MWh)
CEB Hydro	12,379
CEB Coal	12,282
CEB Thermal Oil	6,477
IPP Thermal Oil	37
IPP Wind	2,123
CEB Wind	2,145
Mini Hydro (Telemetered)	1,859
IPP Solar (Bulk)	252
IPP Waste heat + Biomass	293
Total Generation (Excluding estimated figures)	37,847
* Estimated unserved energy	0
* Estimated Mini Hydro (Non telemetered)	3001
* Estimated IPP Solar PV (Bulk 1-10MW)	304
* Estimated Solar Roof Top PV	1930
Total Generation (Including estimated figures)	43,082

* Estimated figures of CEB generation report

Table 02

	Installed Capacity (MW)
CEB Hydro	1409
CEB Coal	810
CEB Thermal Oil	781
IPP Thermal Oil (West Coast, ACE Matara and ACE Embilipitiya)	387
IPP Wind	148
CEB Wind	100
Mini Hydro	416
IPP Waste heat + Biomass	50
IPP Solar	130
Rooftop Solar* (Ordinary)	267
Rooftop Solar* (LT Bulk)	256
Rooftop Solar* (HT Bulk)	61

Data Source - Monthly Review Report [May-2023]

2. Cumulative Dispatch

Following data excludes the contribution from roof top solar, non telemetered solar and mini hydro plants

Table 03 - Current Month

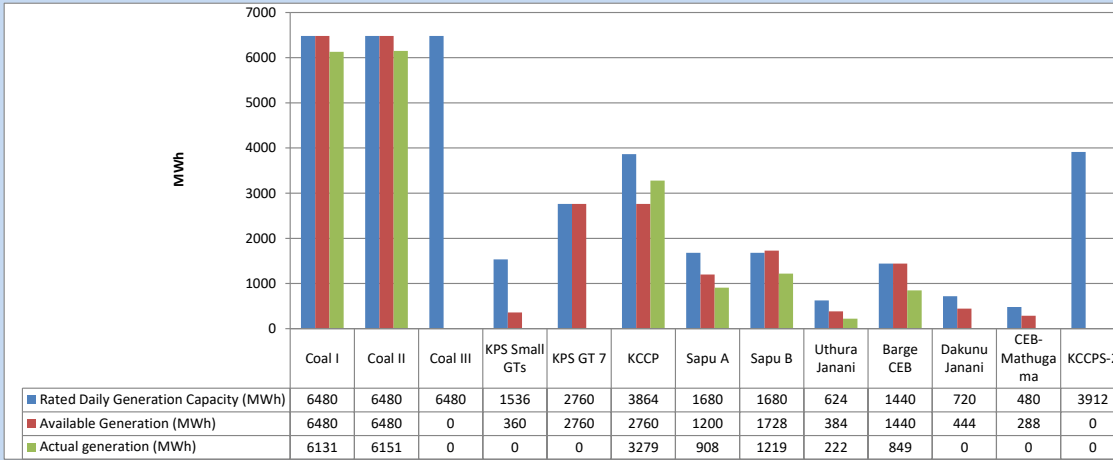
Category	Dispatch (GWh)	
CEB Hydro	48	34.21%
CEB Coal	47	33.02%
CEB Thermal Oil	18	12.97%
IPP Thermal	1	0.52%
SPP Wind	9	6.24%
CEB Wind	9	6.24%
Mini Hydro (Telemetered)	8	5.48%
IPP Solar(Bulk-10MW)	1	0.60%
IPP Waste heat + BMP	1	0.72%
Total	142	

Table 04 - Current Year

Category	Dispatch (GWh)	
CEB Hydro	2,614	24.42%
CEB Coal	3,966	37.05%
CEB Thermal Oil	1,912	17.86%
IPP Thermal	1,096	10.23%
SPP Wind	334	3.12%
CEB Wind	341	3.18%
Mini Hydro (Telemetered)	259	2.42%
IPP Solar(Bulk-10MW)	83	0.78%
IPP Waste heat	100	0.94%
Total	10,706	

3. CEB owned Thermal Plant Dispatch

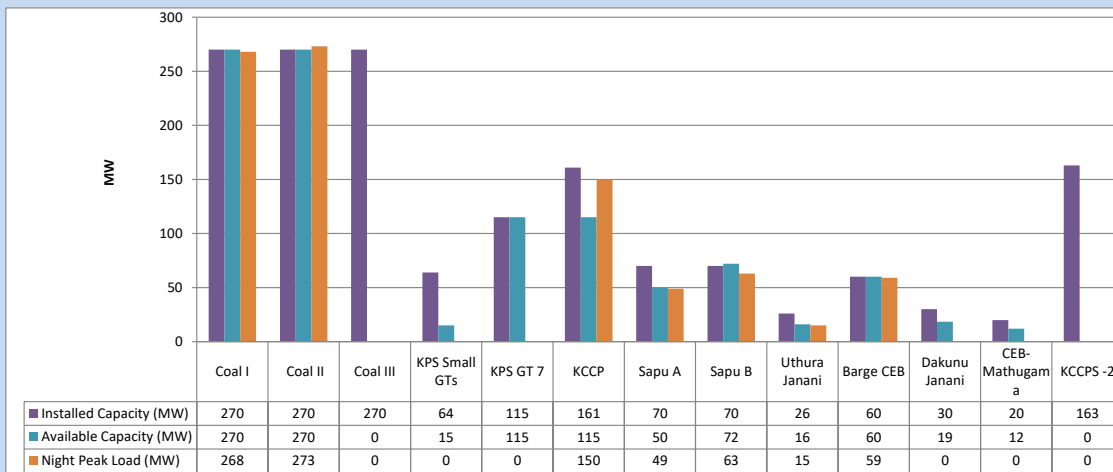
October 4, 2023



Available Generation is estimated based on plant availability at 6.00am on

October 5, 2023

4. CEB owned Thermal Plant Loading at the Night Peak

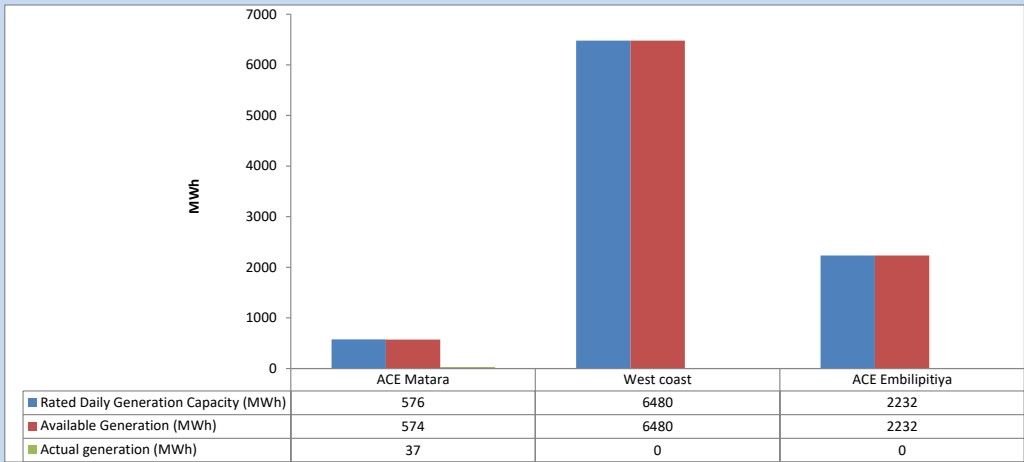


Plant availability is recorded at 6.00 am on

October 5, 2023

5. IPP owned Thermal Plant Dispatch

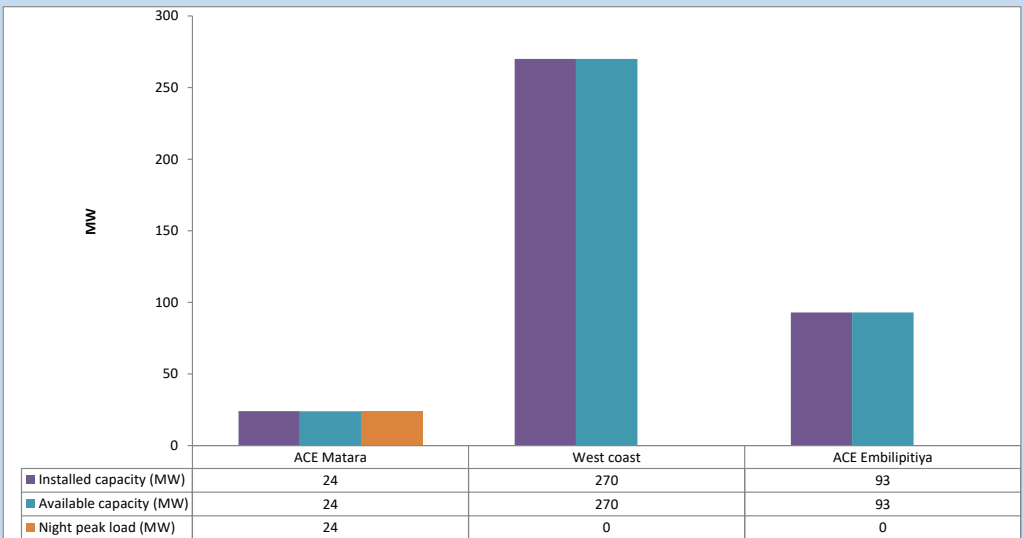
October 4, 2023



Available Generation is estimated based on plant availability at 6.00am on

October 5, 2023

6. IPP owned Thermal Plant Loading at the Night Peak

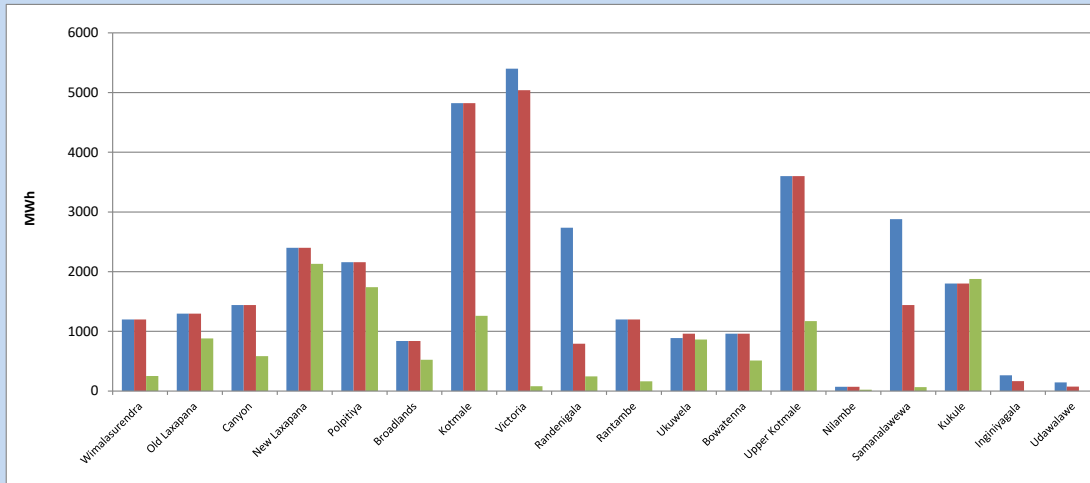


Plant availability is recorded at 6.00 am on

October 5, 2023

7. Major Hydro Plant Dispatch

October 4, 2023

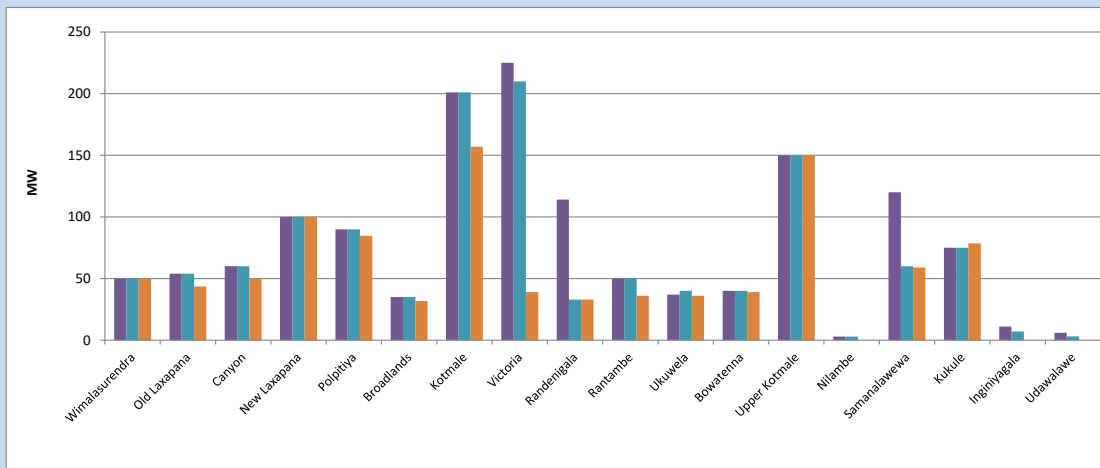


Available Generation is estimated based on plant availability at 6.00am on October 5, 2023
Broadlands power plant is operating in the Commissioning Stage

October 5, 2023

8. Major Hydro Plant Loading at Night Peak

October 4, 2023



Plant availability is recorded at 6.00 am on October 5, 2023
Broadlands power plant is operating in the Commissioning Stage

9. Summary of Major Plant performance

Table 05

Plant	Installed Capacity	Plant Availability	Night peak Load	Plant Dispatch
	(MW)	(MW)	(MW)	(MWh)
Wimalasurendra	50	50	50	251
Old Laxapana	54	54	44	883
Canyon	60	60	50	586
New Laxapana	100	100	100	2,132
Polpitiya	90	90	85	1,740
Broadlands	35	35	32	523
Kotmale	201	201	157	1,260
Victoria	225	210	39	80
Randenigala	114	33	33	247
Rantambe	50	50	36	163
Ukuwela	37	40	36	864
Bowatenna	40	40	39	512
Upper Kotmale	150	150	150	1,171
Nilambe	3	3	0	23
Samanalawewa	120	60	59	65
Kukule	75	75	79	1,879
Inginiyagala	11	7	0	0
Udawalawe	6	3	0	0
Puttalam Coal I	270	270	268	6,131
Puttalam Coal II	270	270	273	6,151
Puttalam Coal III	270	0	0	0
KPS Small GTs	64	15	0	0
KPS GT 7	115	115	0	0
KCCP	161	115	150	3,279
Sapugaskanda A	70	50	49	908
Sapugaskanda B	70	72	63	1,219
Uthura Janani	26	16	15	222
Barge CEB	60	60	59	849
CEB-Hambantota	30	19	0	0
CEB-Mathugama	20	12	0	0
ACE Matara	24	24	24	37
Asia Power	50	0	0	0
KCCPS -2	163	0	0	0
West Coast	270	270	0	0
Nothern Power	36	0	0	0
ACE Embilipitiya	93	93	0	0
Total	3,483	2,662	2,087	37,847

Plant availability is the availability recorded at 6 am on

October 5, 2023

10. Contribution to the Night Peak in MW

October 4, 2023

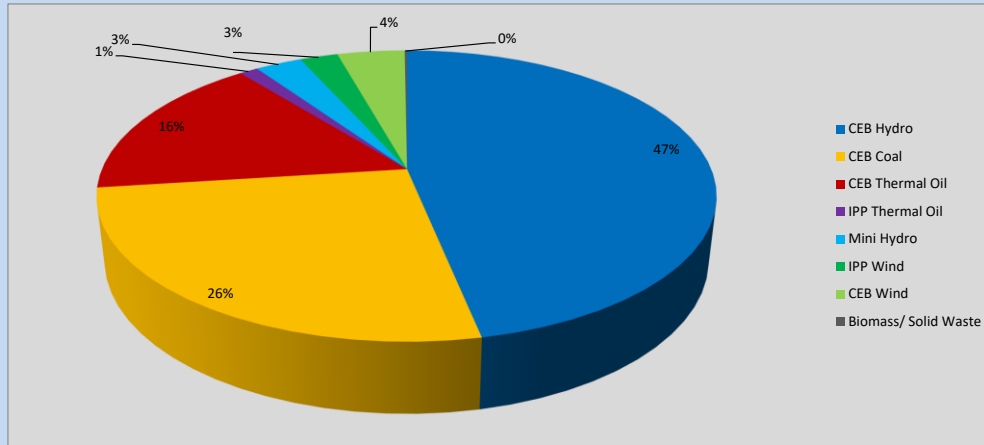


Table 06

CEB Hydro	967	MW
CEB Coal	541	MW
CEB Thermal Oil	336	MW
IPP Thermal Oil	24	MW
Mini Hydro (Telemetered)	60	MW
IPP Wind	48.8	MW
CEB Wind	86.8	MW
Biomass/ Solid Waste	3	MW

Recorded Peak Demand Data

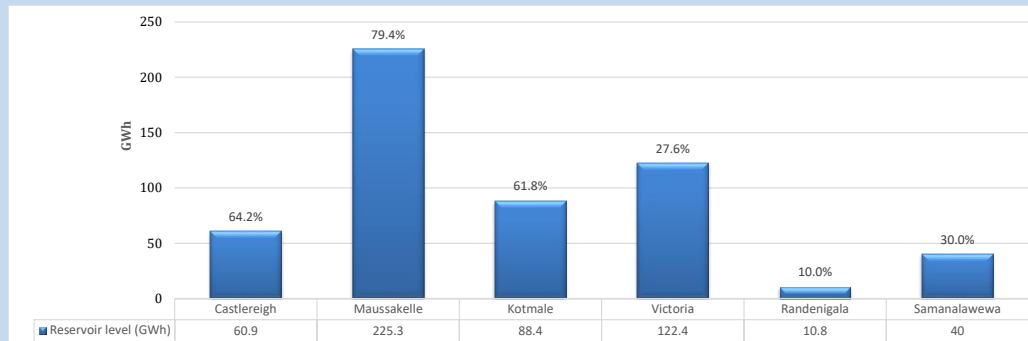
Table 07

Night Peak*	2,066	MW
Day Peak Maximum Demand	1,756	MW
Day Peak Minimum Demand	1,569	MW
Off Peak Minimum Demand	1,079	MW

Above figures are excluding contribution from roof top solar, non telemetered solar and mini hydro plants

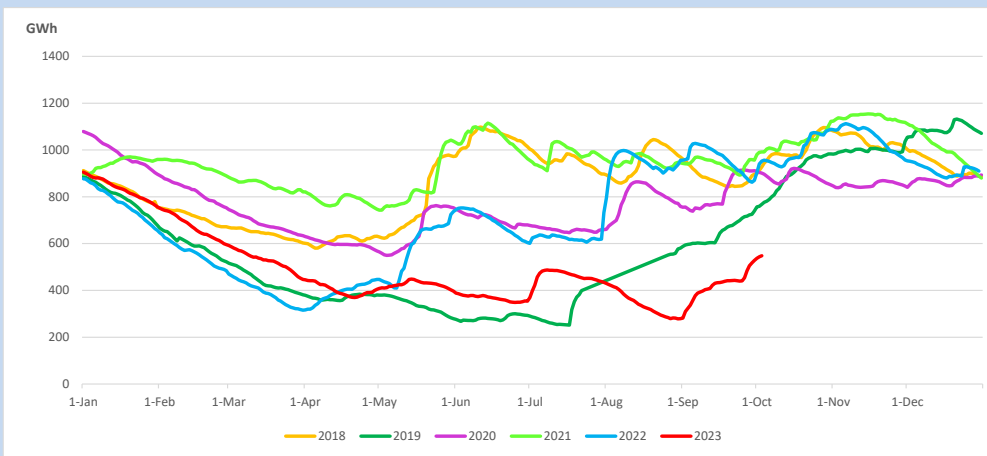
Reservoir Levels -

as at 06.00 Hr on October 5, 2023

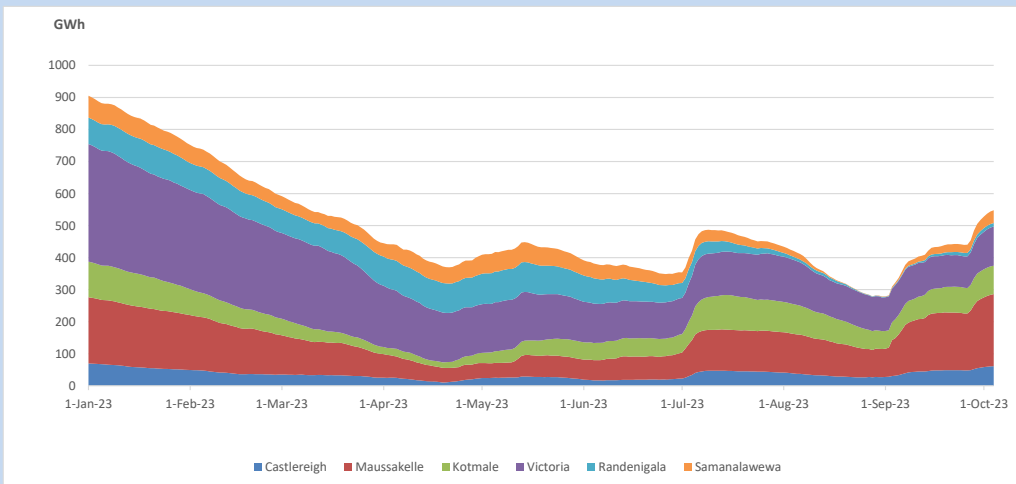


Total Reservoir Level 547.8 GWh
% of Total capacity 45.4%

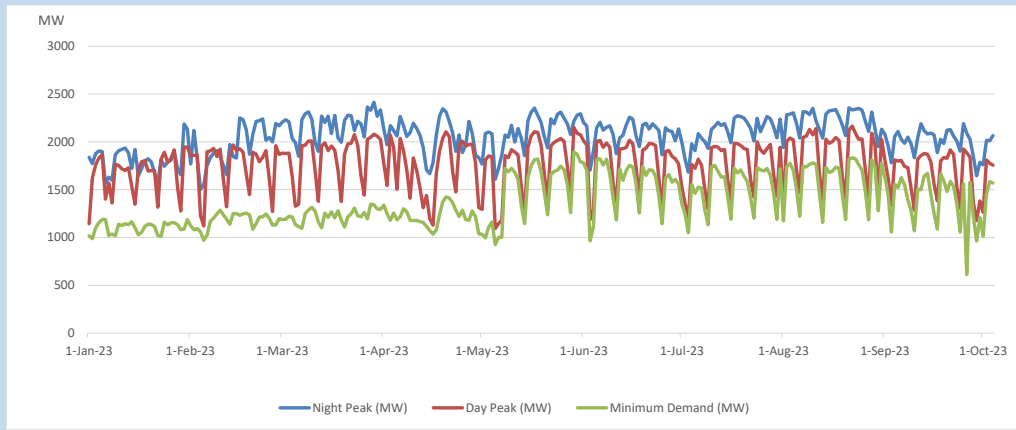
11. Comparison of Total Reservoir Storage Levels with Past Years



12. Variation of Major Hydro Reservoir Levels in the current year (GWh)



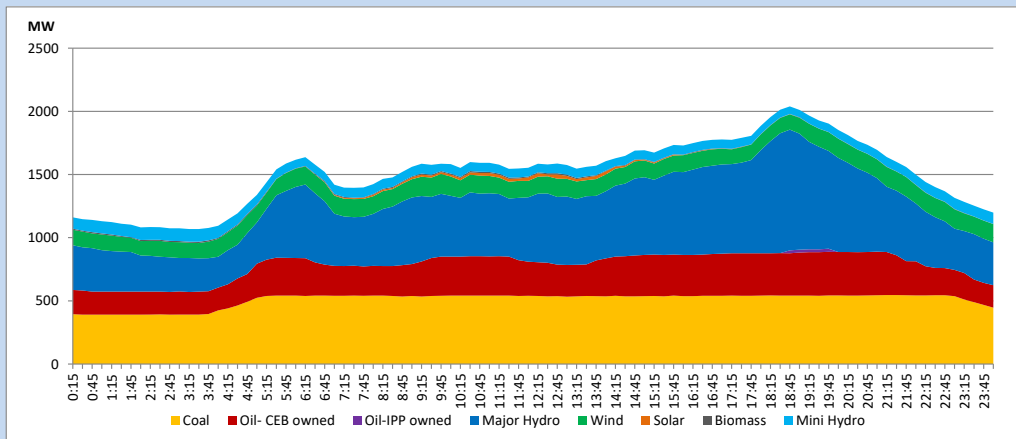
13. Variation of Demand during the current year



The above figures are excluding contribution from roof top solar, non telemetered solar and mini hydro plants

14. Daily Load Curve

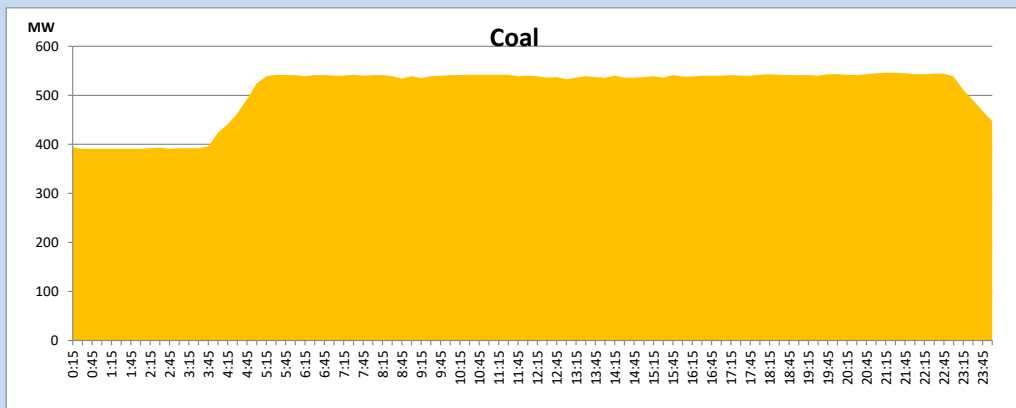
October 4, 2023



Solar and wind data is based on Telemetered Power Stations only

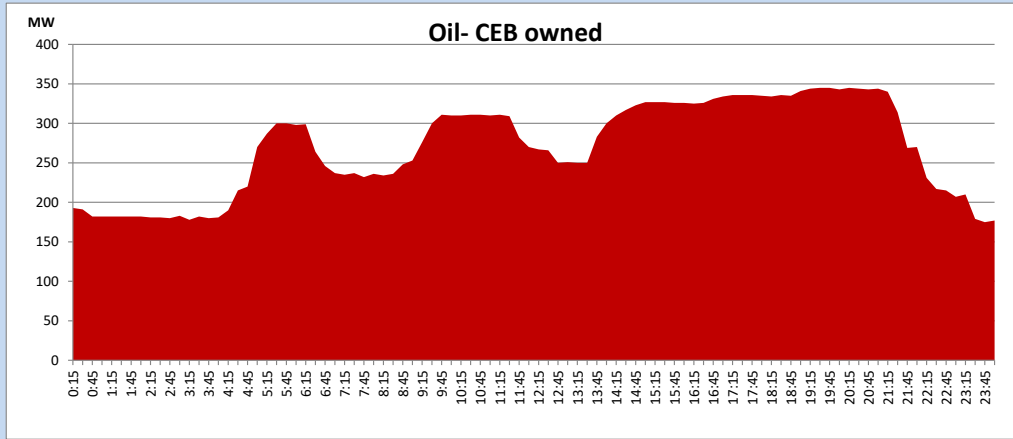
Coal Generation during

October 4, 2023



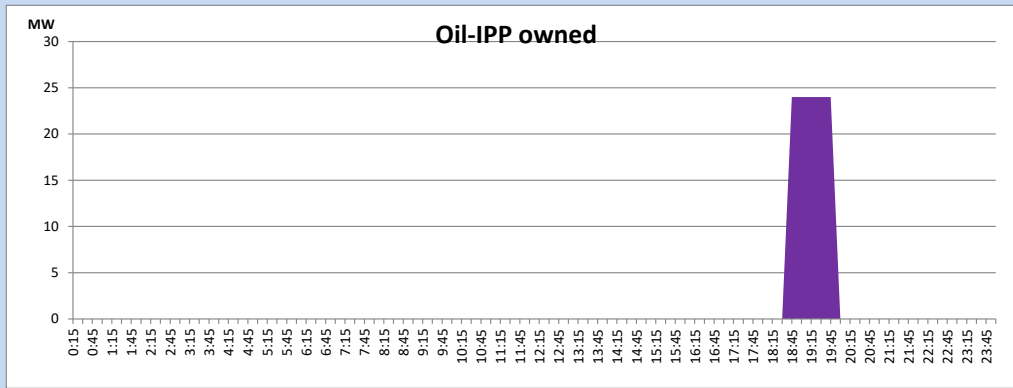
CEB Oil Plant Generation during

October 4, 2023



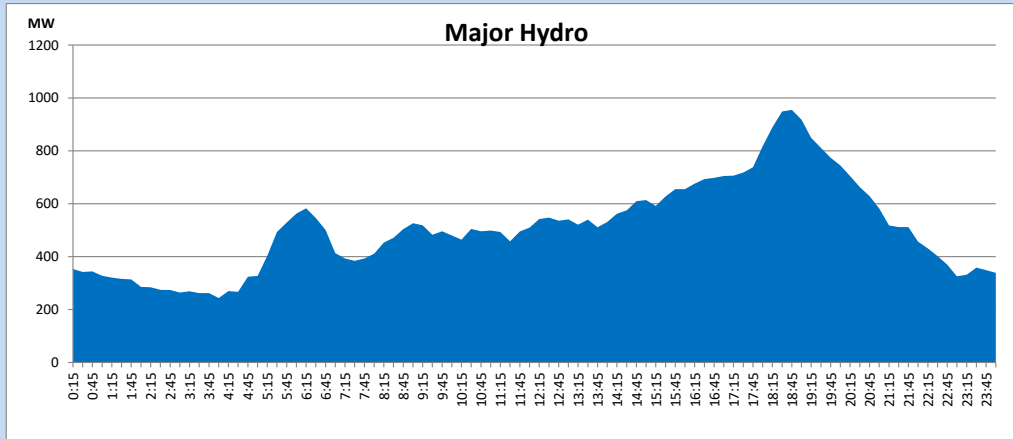
IPP Oil Plant Generation during

October 4, 2023



Major Hydro Generation during

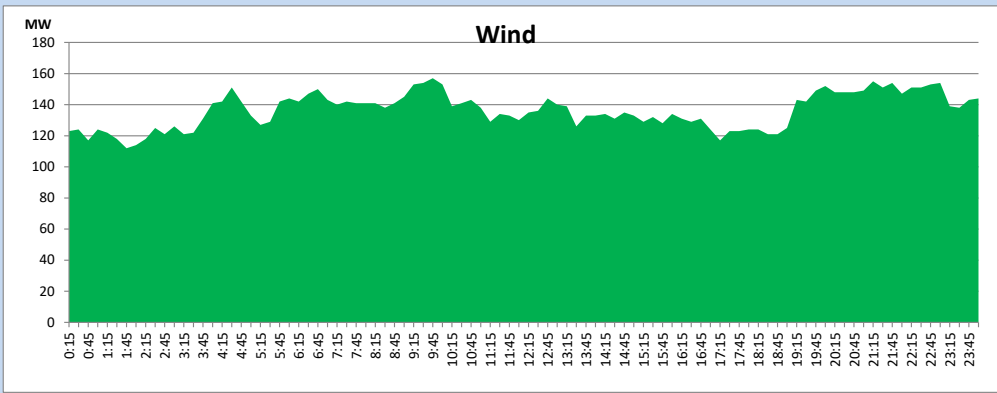
October 4, 2023



Wind Generation during

October 4, 2023

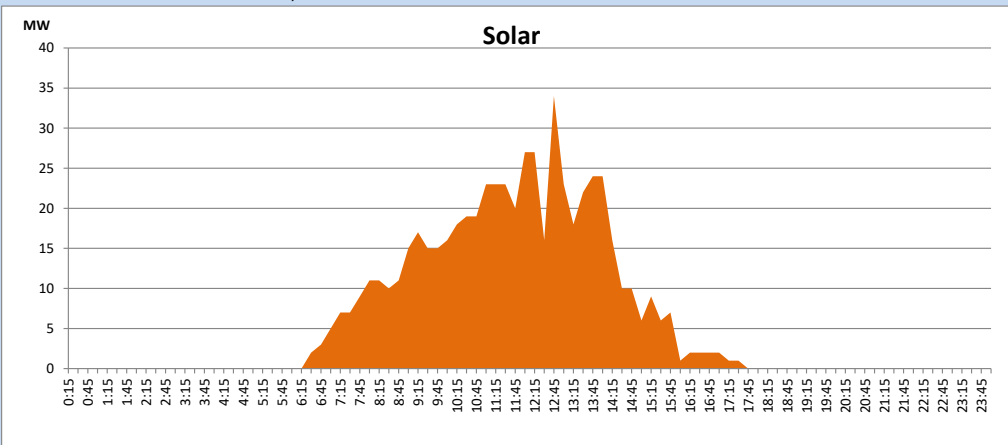
Based on Telemetered Power Stations only



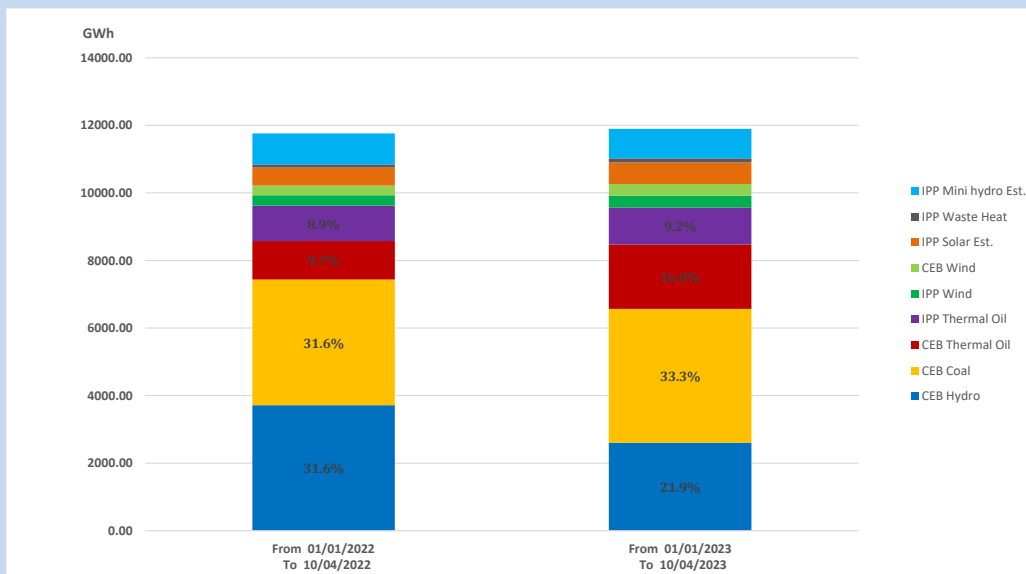
Solar Generation during

October 4, 2023

Based on Telemetered Power Stations only



15. Cumulative Dispatch Comparison with Last Year



Cumulative dispatch

From 01/01/2022 To 10/04/2022

12320 GWh

From 01/01/2023 To 10/04/2023

11884 GWh

The above figures are including contribution from roof top solar, non telemetered solar and mini hydro plants (figures have been adjusted based on the data from the CEB monthly review reports.)

Thermal Plant Fuel types

Table 08

Power Station	Primary Fuel
CEB Thermal	
Sapugaskanda 1	Heavy Fuel
Sapugaskanda 2	Heavy Fuel
Kelanitissa Small Gas Turbines	Auto Diesel
GT 7 - Kelanitissa	Auto Diesel
Kelanitissa CCY	Naphtha or Diesel
Lakvijaya 1	Coal
Lakvijaya 2	Coal
Lakvijaya 3	Coal
Uthuru Janani	Heavy Fuel
Barge CEB	Heavy Fuel
KCCPS -2	Auto Diesel

Power Station	Primary Fuel
Private Thermal	
West Coast	Auto Diesel / Heavy Fuel
ACE Matara	Heavy Fuel
ACE Embilipitiya	Heavy Fuel

Major Incidents reported during the day

October 4, 2023

- 1) Kukule spilling continues to
- 2) At 13:29hrs, system frequency dropped to 49.21Hz due to the tripping of embedded generation.