

Generation and Reservoirs Statistics

October 3, 2023



PUBLIC UTILITIES COMMISSION OF SRI LANKA

1. Daily Generation Mix in MWh

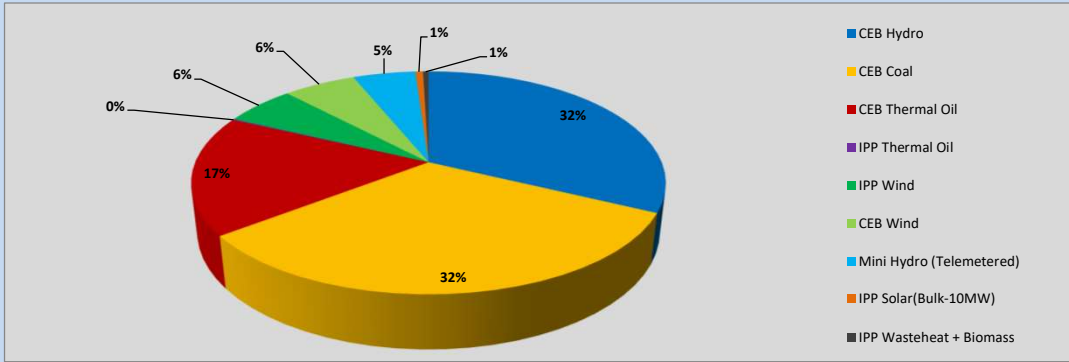


Table 01

	Generation (MWh)
CEB Hydro	11,972
CEB Coal	12,083
CEB Thermal Oil	6,471
IPP Thermal Oil	61
IPP Wind	2,158
CEB Wind	2,200
Mini Hydro (Telemetered)	1,900
IPP Solar (Bulk)	230
IPP Waste heat + Biomass	171
Total Generation (Excluding estimated figures)	37,246
* Estimated unserved energy	0
* Estimated Mini Hydro (Non telemetered)	2960
* Estimated IPP Solar PV (Bulk 1-10MW)	304
* Estimated Solar Roof Top PV	1930
Total Generation (Including estimated figures)	42,440

* Estimated figures of CEB generation report

Table 02

	Installed Capacity (MW)
CEB Hydro	1409
CEB Coal	810
CEB Thermal Oil	781
IPP Thermal Oil (West Coast, ACE Matara and ACE Embilipitiya)	387
IPP Wind	148
CEB Wind	100
Mini Hydro	416
IPP Waste heat + Biomass	50
IPP Solar	130
Rooftop Solar* (Ordinary)	267
Rooftop Solar* (LT Bulk)	256
Rooftop Solar* (HT Bulk)	61

Data Source - Monthly Review Report [May-2023]

2. Cumulative Dispatch

Following data excludes the contribution from roof top solar, non telemetered solar and mini hydro plants

Table 03 - Current Month

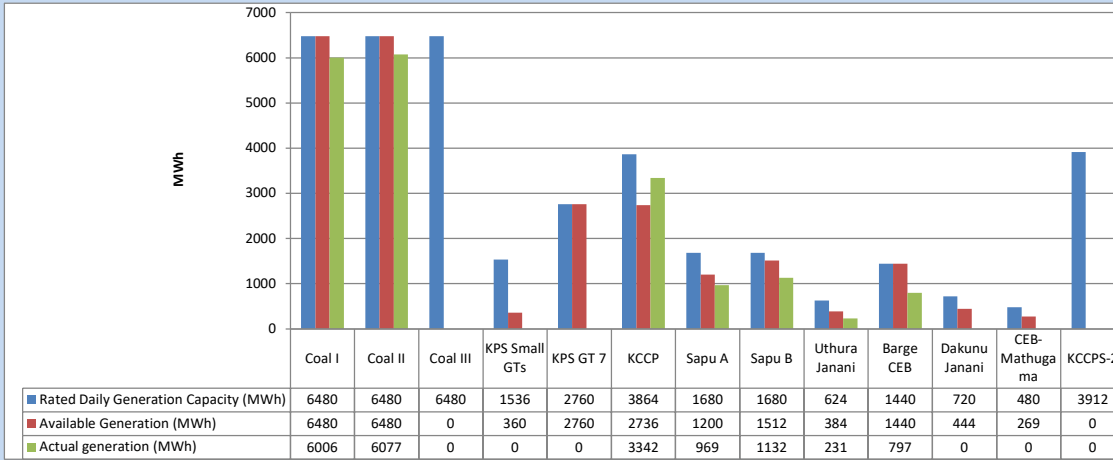
Category	Dispatch (GWh)	
CEB Hydro	36	34.75%
CEB Coal	35	33.22%
CEB Thermal Oil	12	11.45%
IPP Thermal	1	0.67%
SPP Wind	7	6.48%
CEB Wind	7	6.46%
Mini Hydro (Telemetered)	6	5.69%
IPP Solar(Bulk-10MW)	1	0.58%
IPP Waste heat + BMP	1	0.70%
Total	104	

Table 04 - Current Year

Category	Dispatch (GWh)	
CEB Hydro	2,602	24.39%
CEB Coal	3,954	37.06%
CEB Thermal Oil	1,906	17.86%
IPP Thermal	1,095	10.27%
SPP Wind	332	3.11%
CEB Wind	338	3.17%
Mini Hydro (Telemetered)	258	2.41%
IPP Solar(Bulk-10MW)	83	0.78%
IPP Waste heat	100	0.94%
Total	10,668	

3. CEB owned Thermal Plant Dispatch

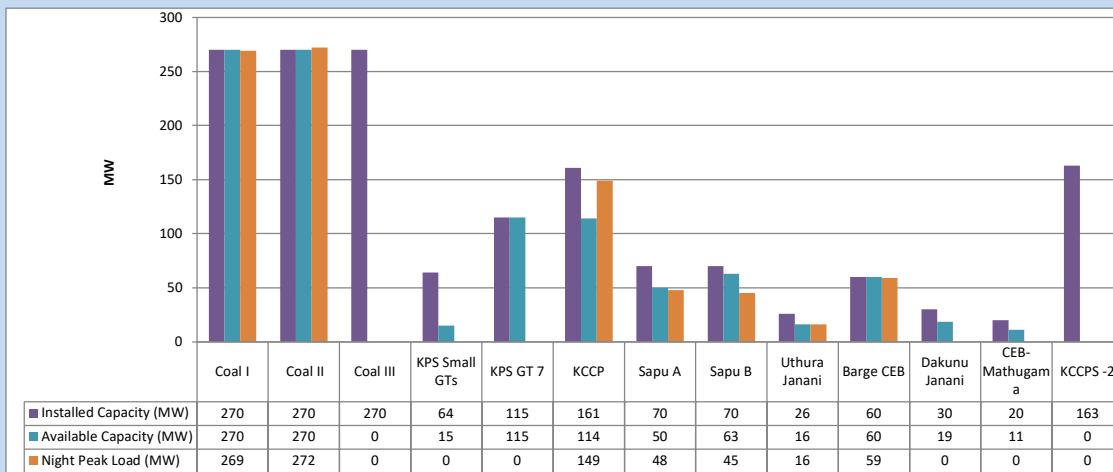
October 3, 2023



Available Generation is estimated based on plant availability at 6.00am on

October 4, 2023

4. CEB owned Thermal Plant Loading at the Night Peak

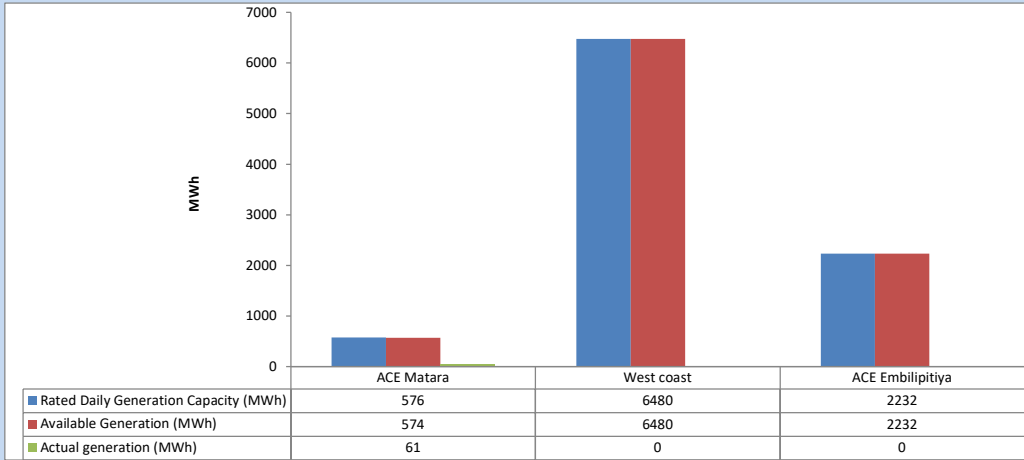


Plant availability is recorded at 6.00 am on

October 4, 2023

5. IPP owned Thermal Plant Dispatch

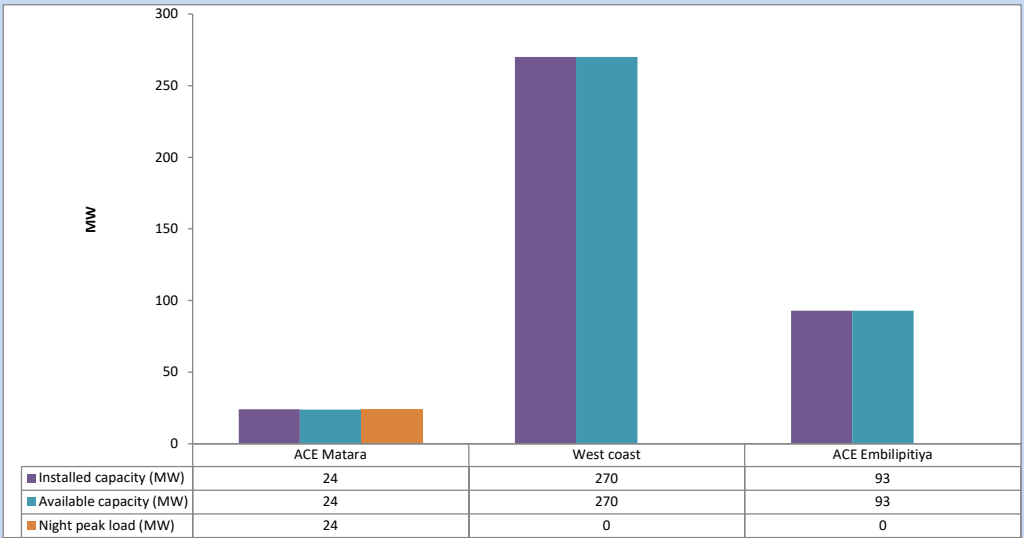
October 3, 2023



Available Generation is estimated based on plant availability at 6.00am on

October 4, 2023

6. IPP owned Thermal Plant Loading at the Night Peak

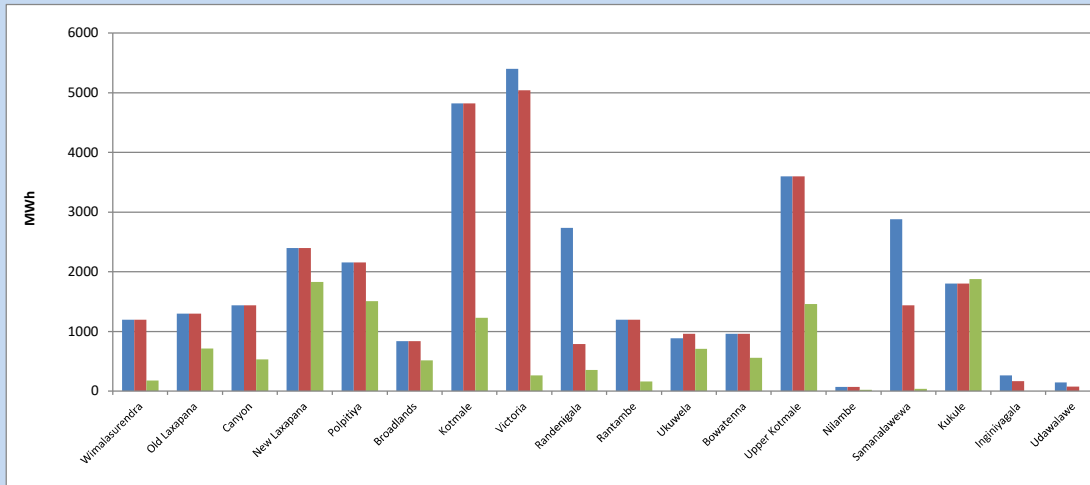


Plant availability is recorded at 6.00 am on

October 4, 2023

7. Major Hydro Plant Dispatch

October 3, 2023

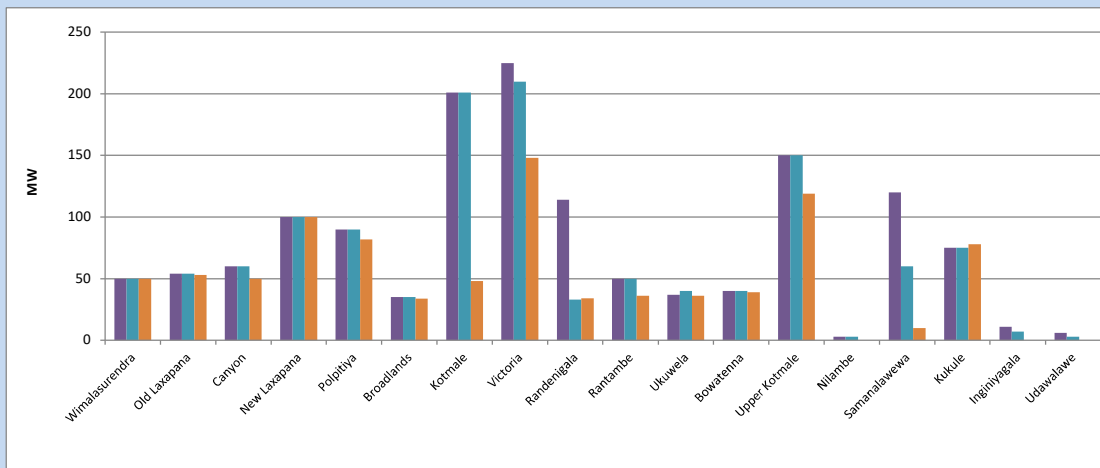


Available Generation is estimated based on plant availability at 6.00am on October 4, 2023
Broadlands power plant is operating in the Commissioning Stage

October 4, 2023

8. Major Hydro Plant Loading at Night Peak

October 3, 2023



Plant availability is recorded at 6.00 am on October 4, 2023
Broadlands power plant is operating in the Commissioning Stage

October 4, 2023

9. Summary of Major Plant performance

Table 05

Plant	Installed Capacity	Plant Availability	Night peak Load	Plant Dispatch
	(MW)	(MW)	(MW)	(MWh)
Wimalasurendra	50	50	50	183
Old Laxapana	54	54	53	718
Canyon	60	60	50	534
New Laxapana	100	100	100	1,828
Polpitiya	90	90	82	1,510
Broadlands	35	35	34	515
Kotmale	201	201	48	1,230
Victoria	225	210	148	264
Randenigala	114	33	34	356
Rantambe	50	50	36	165
Ukuwela	37	40	36	710
Bowatenna	40	40	39	557
Upper Kotmale	150	150	119	1,458
Nilambe	3	3	0	25
Samanalawewa	120	60	10	39
Kukule	75	75	78	1,880
Inginiyagala	11	7	0	0
Udawalawe	6	3	0	0
Puttalam Coal I	270	270	269	6,006
Puttalam Coal II	270	270	272	6,077
Puttalam Coal III	270	0	0	0
KPS Small GTs	64	15	0	0
KPS GT 7	115	115	0	0
KCCP	161	114	149	3,342
Sapugaskanda A	70	50	48	969
Sapugaskanda B	70	63	45	1,132
Uthura Janani	26	16	16	231
Barge CEB	60	60	59	797
CEB-Hambantota	30	19	0	0
CEB-Mathugama	20	11	0	0
ACE Matara	24	24	24	61
Asia Power	50	0	0	0
KCCPS -2	163	0	0	0
West Coast	270	270	0	0
Nothern Power	36	0	0	0
ACE Embilipitiya	93	93	0	0
Total	3,483	2,651	2,034	37,246

Plant availability is the availability recorded at 6 am on

October 4, 2023

10. Contribution to the Night Peak in MW

October 3, 2023

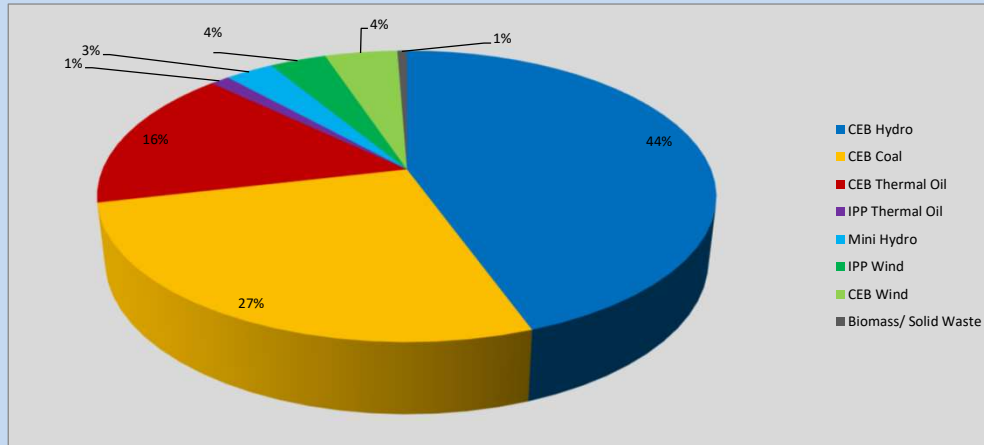


Table 06

CEB Hydro	896	MW
CEB Coal	541	MW
CEB Thermal Oil	317	MW
IPP Thermal Oil	24	MW
Mini Hydro (Telemetered)	61	MW
IPP Wind	71.1	MW
CEB Wind	91.2	MW
Biomass/ Solid Waste	12	MW

Recorded Peak Demand Data

Table 07

Night Peak*	2,013	MW
Day Peak Maximum Demand	1,776	MW
Day Peak Minimum Demand	1,585	MW
Off Peak Minimum Demand	1,048	MW

Above figures are excluding contribution from roof top solar, non telemetered solar and mini hydro plants

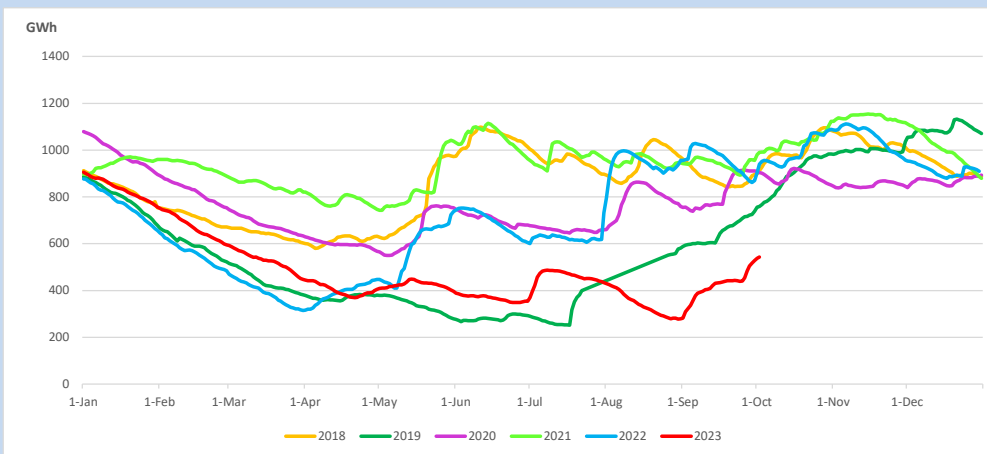
Reservoir Levels -

as at 06.00 Hr on October 4, 2023

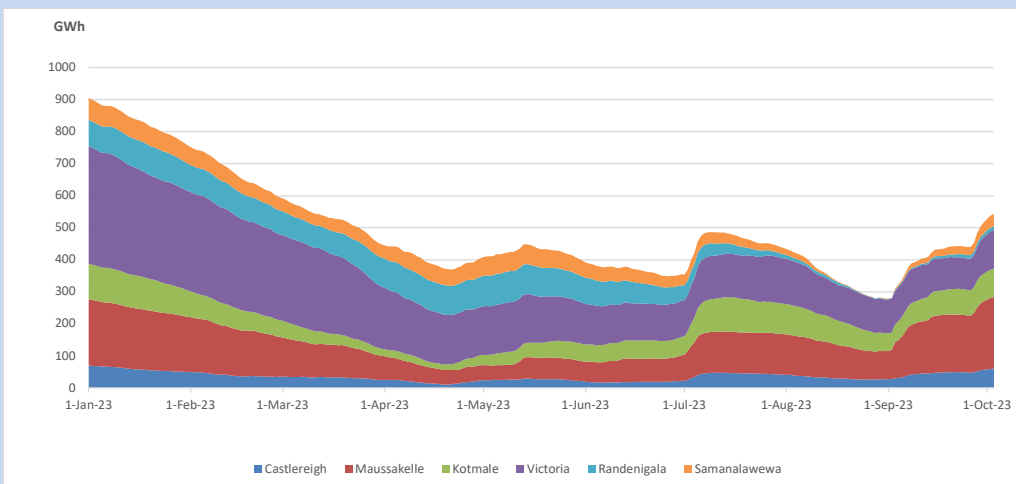


Total Reservoir Level 543.8 GWh
% of Total capacity 45.1%

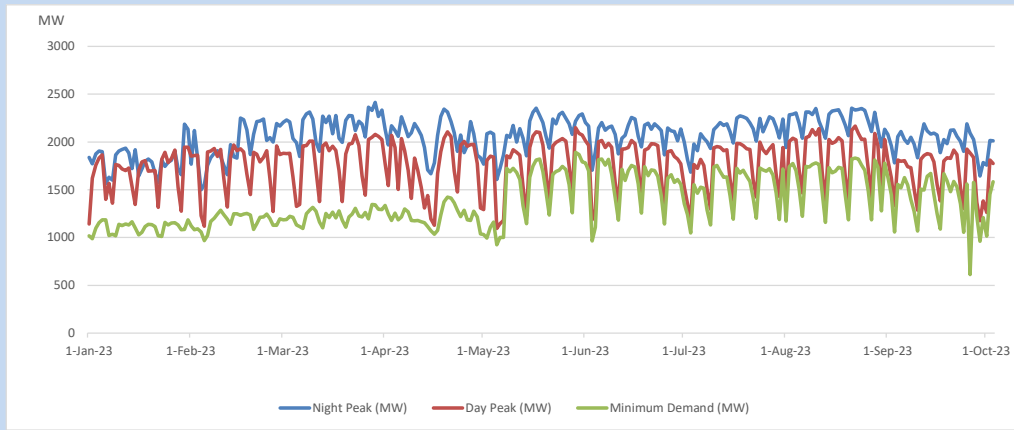
11. Comparison of Total Reservoir Storage Levels with Past Years



12. Variation of Major Hydro Reservoir Levels in the current year (GWh)



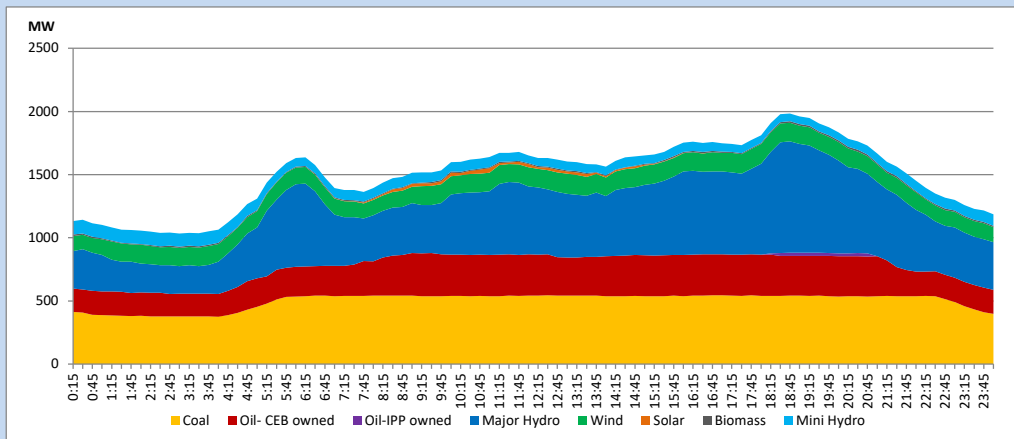
13. Variation of Demand during the current year



The above figures are excluding contribution from roof top solar, non telemetered solar and mini hydro plants

14. Daily Load Curve

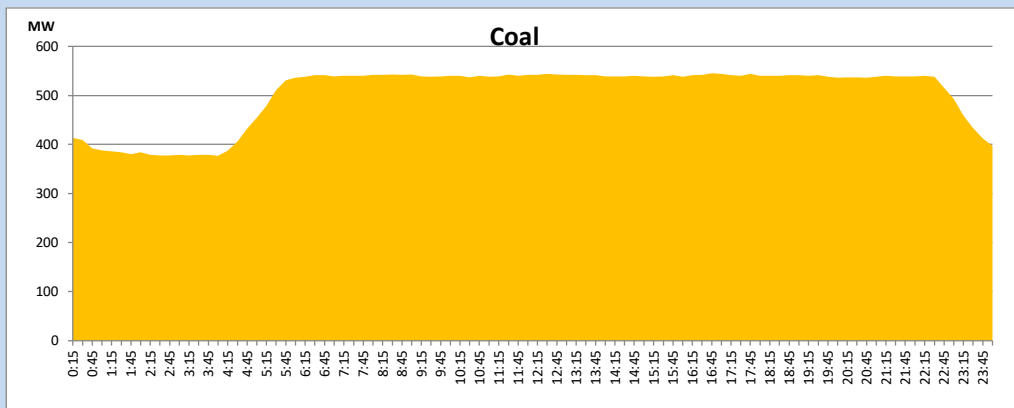
October 3, 2023



Solar and wind data is based on Telemetered Power Stations only

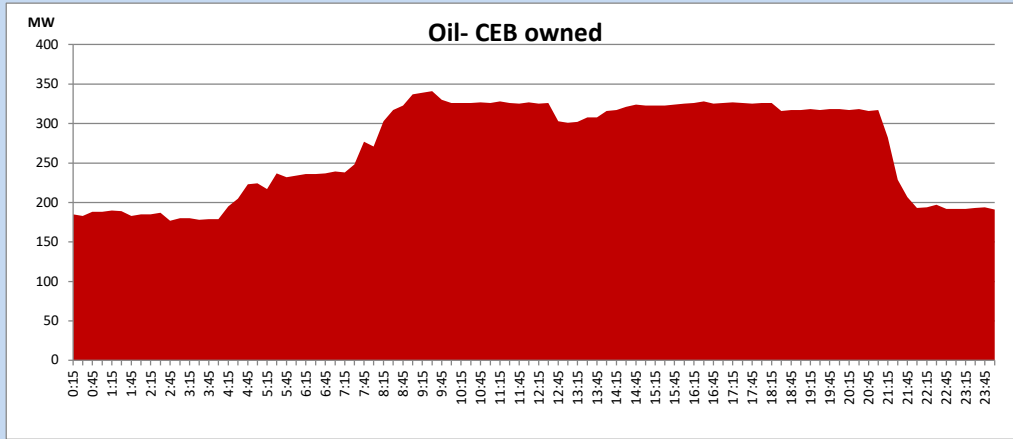
Coal Generation during

October 3, 2023



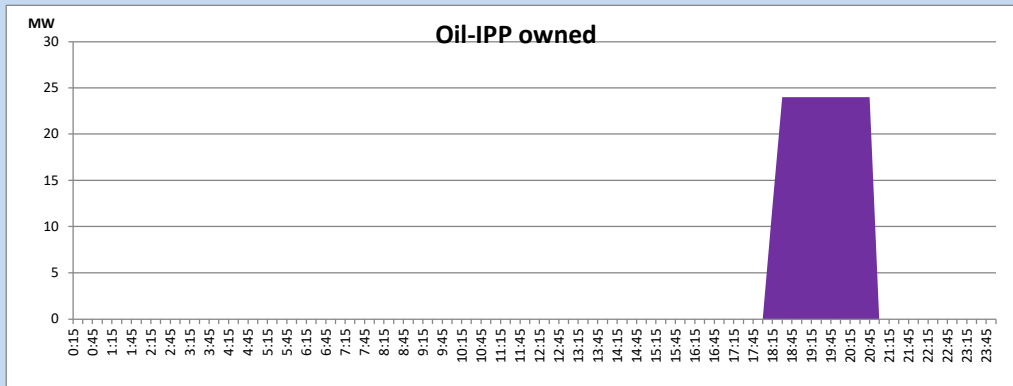
CEB Oil Plant Generation during

October 3, 2023



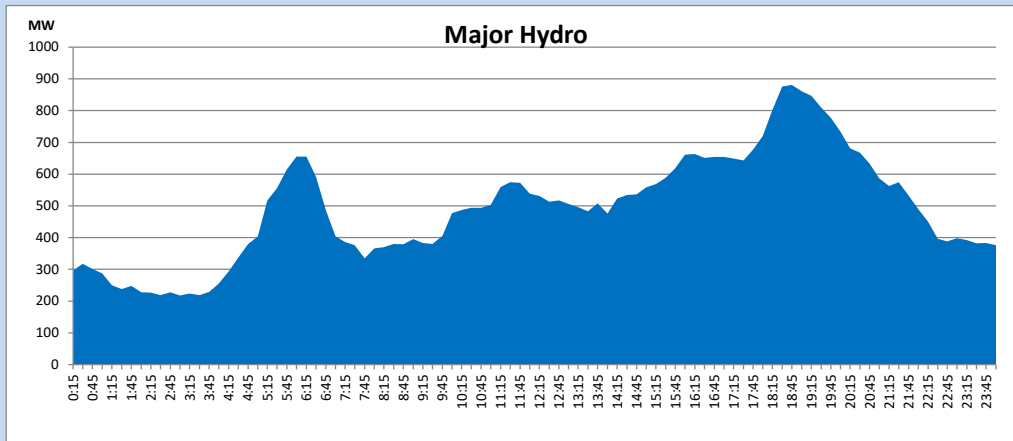
IPP Oil Plant Generation during

October 3, 2023



Major Hydro Generation during

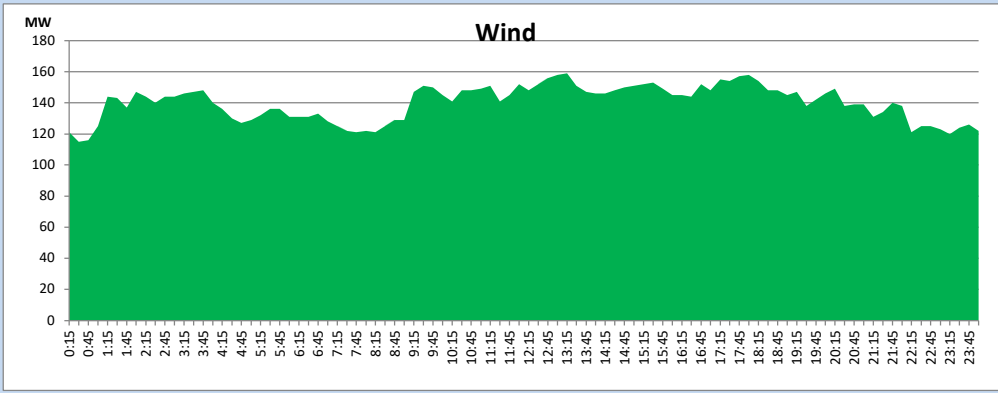
October 3, 2023



Wind Generation during

October 3, 2023

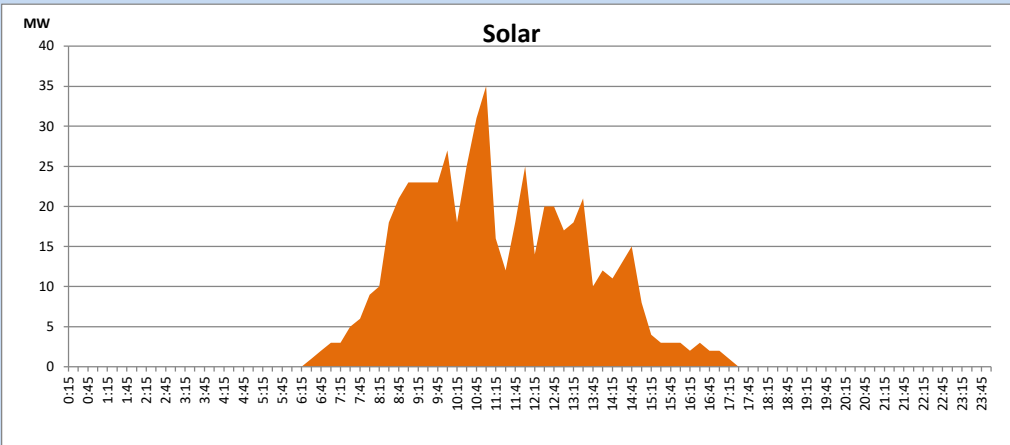
Based on Telemetered Power Stations only



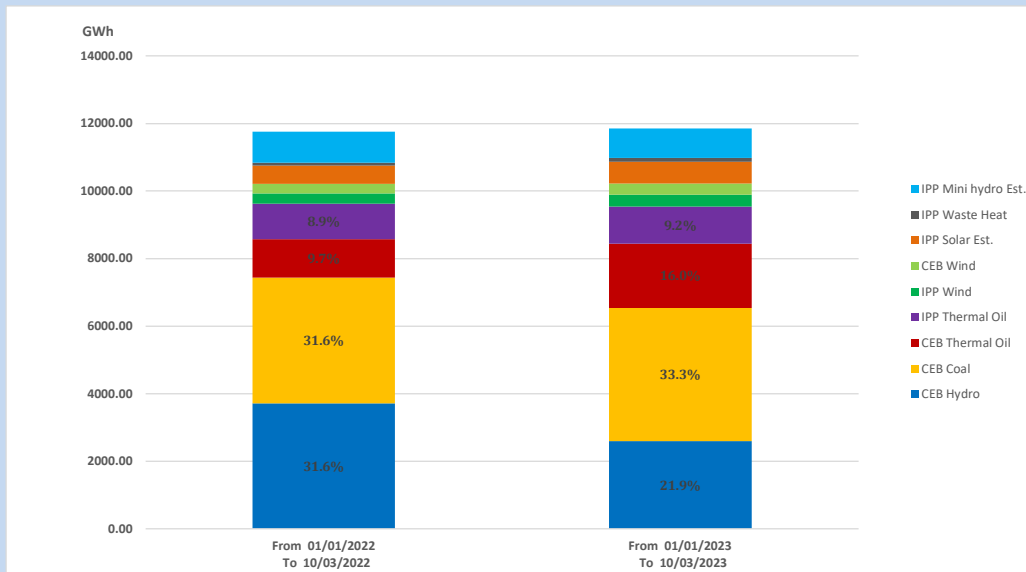
Solar Generation during

October 3, 2023

Based on Telemetered Power Stations only



15. Cumulative Dispatch Comparison with Last Year



Cumulative dispatch

From 01/01/2022 To 10/03/2022

12274 GWh

From 01/01/2023 To 10/03/2023

11841 GWh

The above figures are including contribution from roof top solar, non telemetered solar and mini hydro plants (figures have been adjusted based on the data from the CEB monthly review reports.)

Thermal Plant Fuel types

Table 08

Power Station	Primary Fuel
CEB Thermal	
Sapugaskanda 1	Heavy Fuel
Sapugaskanda 2	Heavy Fuel
Kelanitissa Small Gas Turbines	Auto Diesel
GT 7 - Kelanitissa	Auto Diesel
Kelanitissa CCY	Naphtha or Diesel
Lakvijaya 1	Coal
Lakvijaya 2	Coal
Lakvijaya 3	Coal
Uthuru Janani	Heavy Fuel
Barge CEB	Heavy Fuel
KCCPS -2	Auto Diesel

Power Station	Primary Fuel
Private Thermal	
West Coast	Auto Diesel / Heavy Fuel
ACE Matara	Heavy Fuel
ACE Embilipitiya	Heavy Fuel

Major Incidents reported during the day

October 3, 2023

- 1) Kukule spilling continues to
- 2) Polpitiya unit 01 tripped at 7:53hrs due to a shear pin failure, rejecting 11MW from the system. Polpitiya unit 01 resumed generation at 12:51hrs.
- 3) Broadland unit 01 and 02 tripped at 8:57hrs due to cooling water issue. Broadland unit 01 resumed generation at 9:35hrs, and unit 02 made available at 9:35hrs.