

Generation and Reservoirs Statistics

October 2, 2023



PUBLIC UTILITIES COMMISSION OF SRI LANKA

1. Daily Generation Mix in MWh

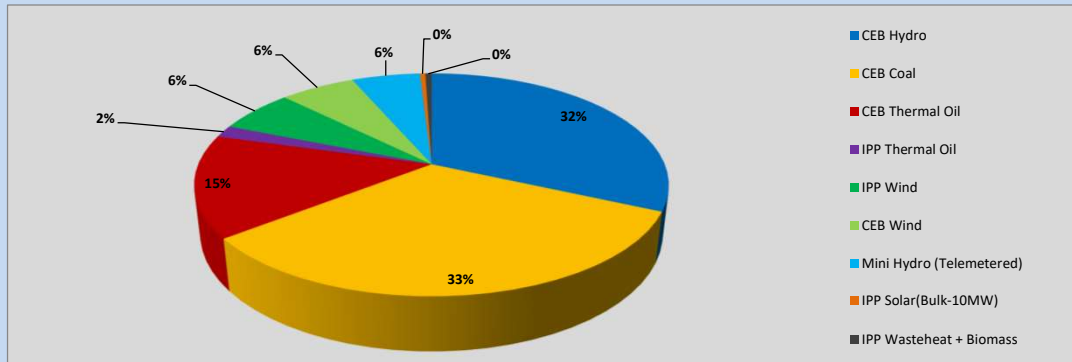


Table 01

	Generation (MWh)
CEB Hydro	11,571
CEB Coal	11,982
CEB Thermal Oil	5,426
IPP Thermal Oil	643
IPP Wind	2,290
CEB Wind	2,230
Mini Hydro (Telemetered)	2,034
IPP Solar (Bulk)	161
IPP Waste heat + Biomass	187
Total Generation (Excluding estimated figures)	36,524
* Estimated unserved energy	0
* Estimated Mini Hydro (Non telemetered)	2826
* Estimated IPP Solar PV (Bulk 1-10MW)	304
* Estimated Solar Roof Top PV	1930
Total Generation (Including estimated figures)	41,584

* Estimated figures of CEB generation report

Table 02

	Installed Capacity (MW)
CEB Hydro	1409
CEB Coal	810
CEB Thermal Oil	781
IPP Thermal Oil (West Coast, ACE Matara and ACE Embilipitiya)	387
IPP Wind	148
CEB Wind	100
Mini Hydro	416
IPP Waste heat + Biomass	50
IPP Solar	130
Rooftop Solar* (Ordinary)	267
Rooftop Solar* (LT Bulk)	256
Rooftop Solar* (HT Bulk)	61

Data Source - Monthly Review Report [May-2023]

2. Cumulative Dispatch

Following data excludes the contribution from roof top solar, non telemetered solar and mini hydro plants

Table 03 - Current Month

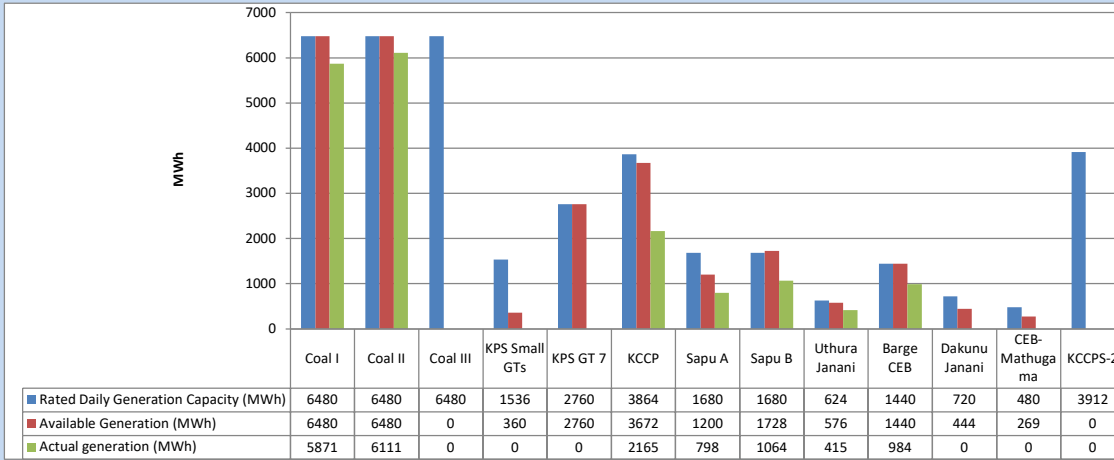
Category	Dispatch (GWh)	
CEB Hydro	24	36.21%
CEB Coal	22	33.66%
CEB Thermal Oil	5	8.14%
IPP Thermal	1	0.96%
SPP Wind	5	6.85%
CEB Wind	5	6.76%
Mini Hydro (Telemetered)	4	6.01%
IPP Solar(Bulk-10MW)	0	0.55%
IPP Waste heat + BMP	1	0.84%
Total	67	

Table 04 - Current Year

Category	Dispatch (GWh)	
CEB Hydro	2,590	24.36%
CEB Coal	3,942	37.08%
CEB Thermal Oil	1,899	17.86%
IPP Thermal	1,095	10.30%
SPP Wind	330	3.10%
CEB Wind	336	3.16%
Mini Hydro (Telemetered)	256	2.40%
IPP Solar(Bulk-10MW)	83	0.78%
IPP Waste heat	100	0.94%
Total	10,631	

3. CEB owned Thermal Plant Dispatch

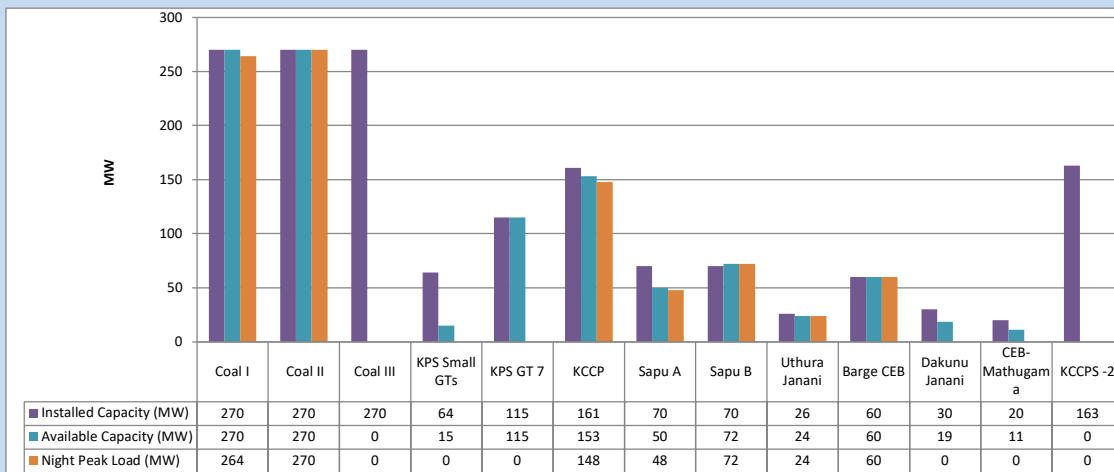
October 2, 2023



Available Generation is estimated based on plant availability at 6.00am on

October 3, 2023

4. CEB owned Thermal Plant Loading at the Night Peak

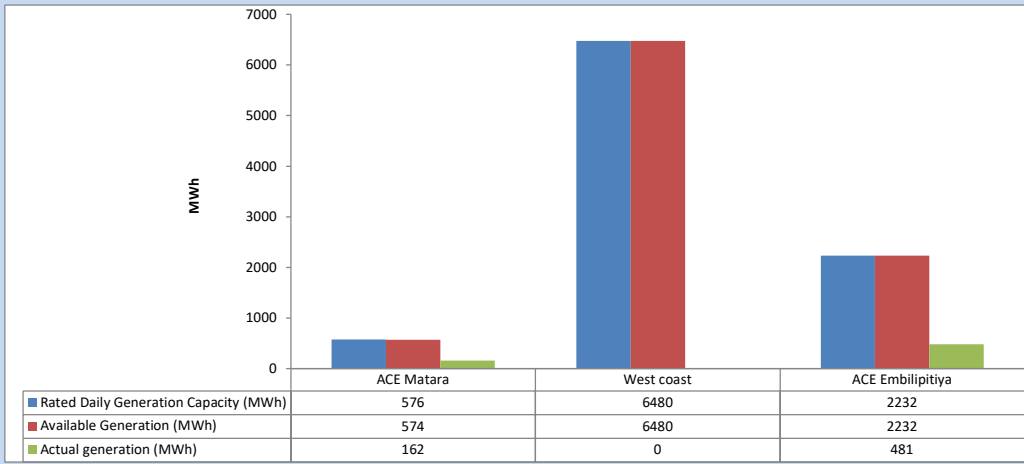


Plant availability is recorded at 6.00 am on

October 3, 2023

5. IPP owned Thermal Plant Dispatch

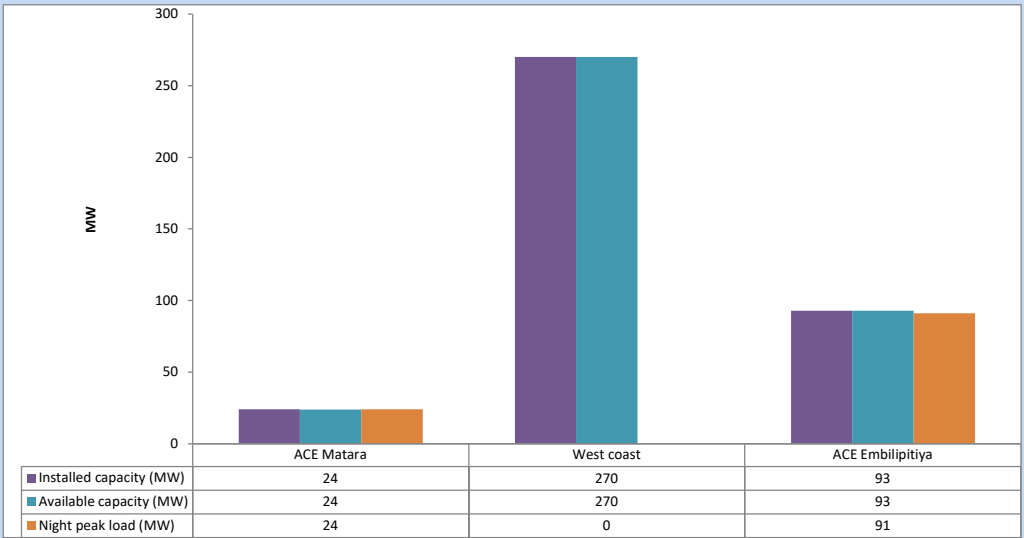
October 2, 2023



Available Generation is estimated based on plant availability at 6.00am on

October 3, 2023

6. IPP owned Thermal Plant Loading at the Night Peak

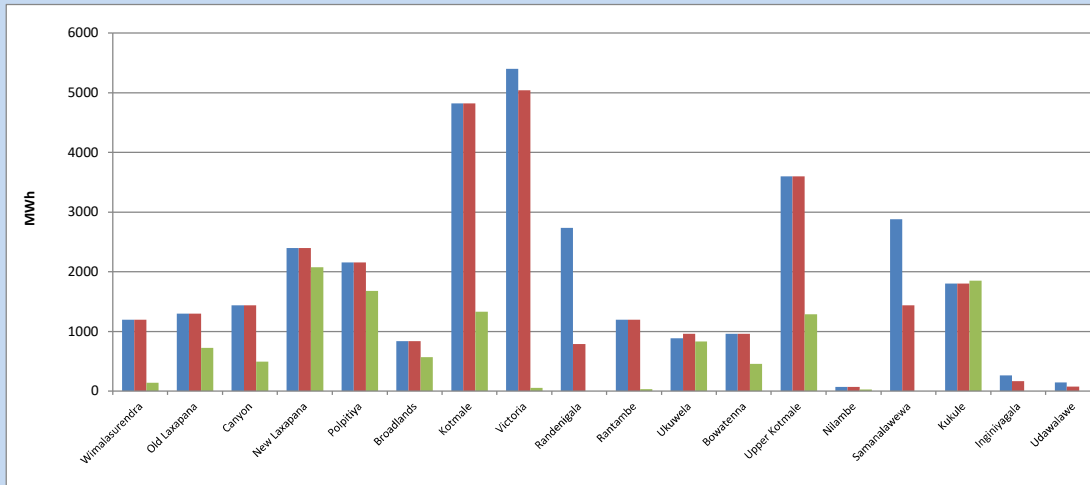


Plant availability is recorded at 6.00 am on

October 3, 2023

7. Major Hydro Plant Dispatch

October 2, 2023

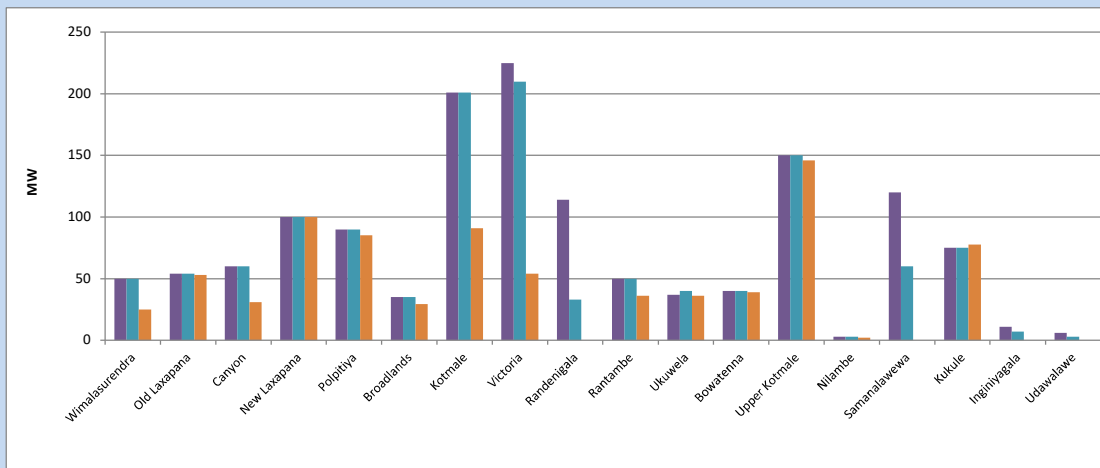


Available Generation is estimated based on plant availability at 6.00am on October 3, 2023
Broadlands power plant is operating in the Commissioning Stage

October 3, 2023

8. Major Hydro Plant Loading at Night Peak

October 2, 2023



Plant availability is recorded at 6.00 am on October 3, 2023
Broadlands power plant is operating in the Commissioning Stage

October 3, 2023

9. Summary of Major Plant performance

Table 05

Plant	Installed Capacity	Plant Availability	Night peak Load	Plant Dispatch
	(MW)	(MW)	(MW)	(MWh)
Wimalasurendra	50	50	25	140
Old Laxapana Canyon	54	54	53	726
New Laxapana	60	60	31	493
Polpitiya	100	100	100	2,078
Broadlands	90	90	85	1,680
Kotmale	35	35	29	571
Victoria	201	201	91	1,330
Randenigala	225	210	54	53
Rantambe	114	33	0	0
Ukuwela	50	50	36	34
Bowatenna	37	40	36	837
Upper Kotmale	40	40	39	457
Nilambe	150	150	146	1,289
Samanalawewa	3	3	2	29
Kukule	120	60	0	0
Inginiyagala	75	75	78	1,854
Udawalawe	11	7	0	0
Puttalam Coal I	6	3	0	0
Puttalam Coal II	270	270	264	5,871
Puttalam Coal III	270	270	270	6,111
KPS Small GTs	270	0	0	0
KPS GT 7	64	15	0	0
KCCP	115	115	0	0
Sapugaskanda A	161	153	148	2,165
Sapugaskanda B	70	50	48	798
Uthura Janani	70	72	72	1,064
Barge CEB	26	24	24	415
CEB-Hambantota	60	60	60	984
CEB-Mathugama	30	19	0	0
ACE Matara	20	11	0	0
Asia Power	24	24	24	162
KCCPS -2	50	0	0	0
West Coast	163	0	0	0
Nothern Power	270	270	0	0
ACE Embilipitiya	36	0	0	0
Total	93	93	91	481
	3,483	2,707	2,037	36,524

Plant availability is the availability recorded at 6 am on

October 3, 2023

10. Contribution to the Night Peak in MW

October 2, 2023

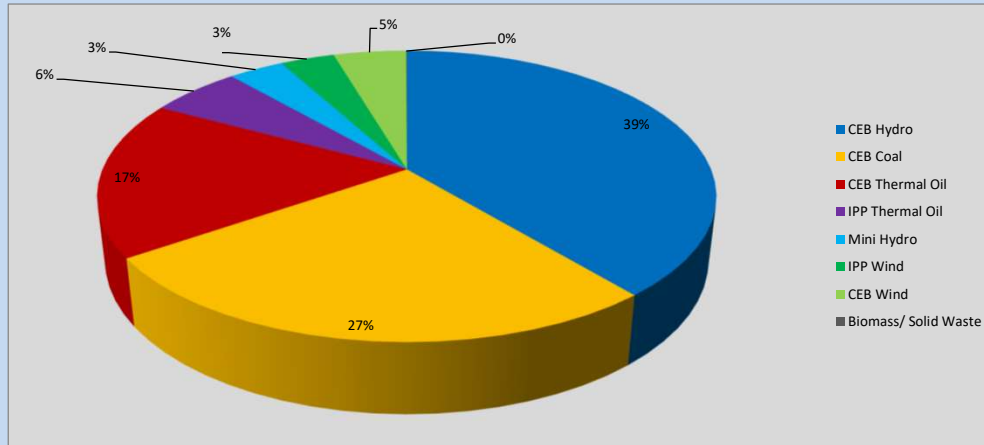


Table 06

CEB Hydro	784	MW
CEB Coal	534	MW
CEB Thermal Oil	352	MW
IPP Thermal Oil	115	MW
Mini Hydro (Telemetered)	70	MW
IPP Wind	68.1	MW
CEB Wind	91.4	MW
Biomass/ Solid Waste	1	MW

Recorded Peak Demand Data

Table 07

Night Peak*	2,016	MW
Day Peak Maximum Demand	1,811	MW
Day Peak Minimum Demand	1,453	MW
Off Peak Minimum Demand	935	MW

Above figures are excluding contribution from roof top solar, non telemetered solar and mini hydro plants

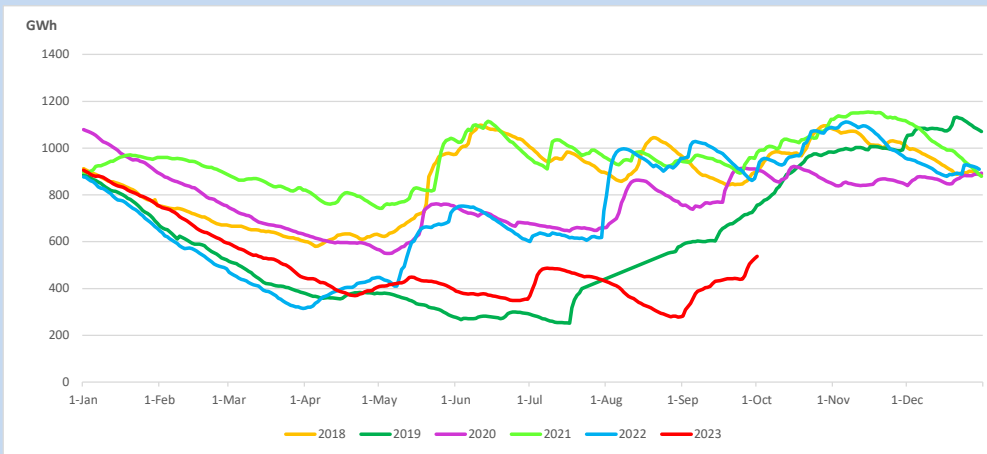
Reservoir Levels -

as at 06.00 Hr on October 3, 2023

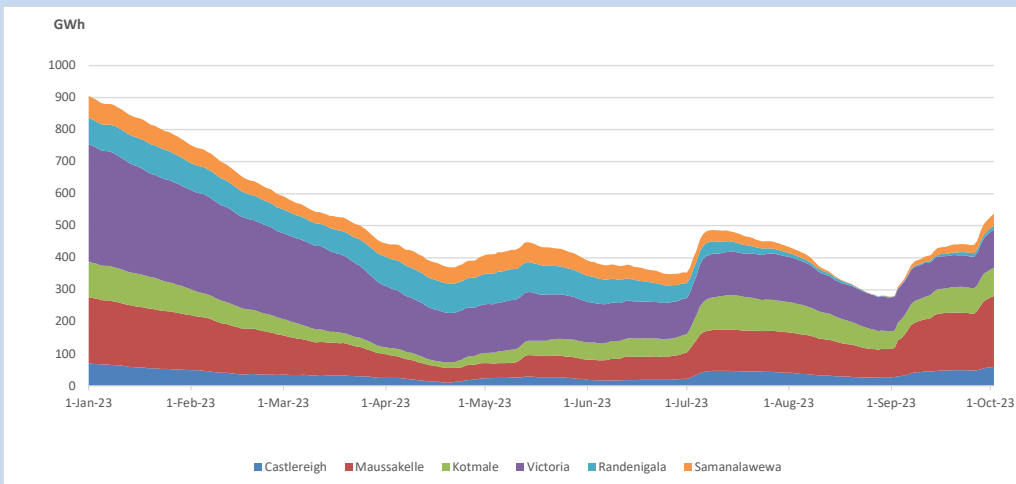


Total Reservoir Level 537.1 GWh
% of Total capacity 44.6%

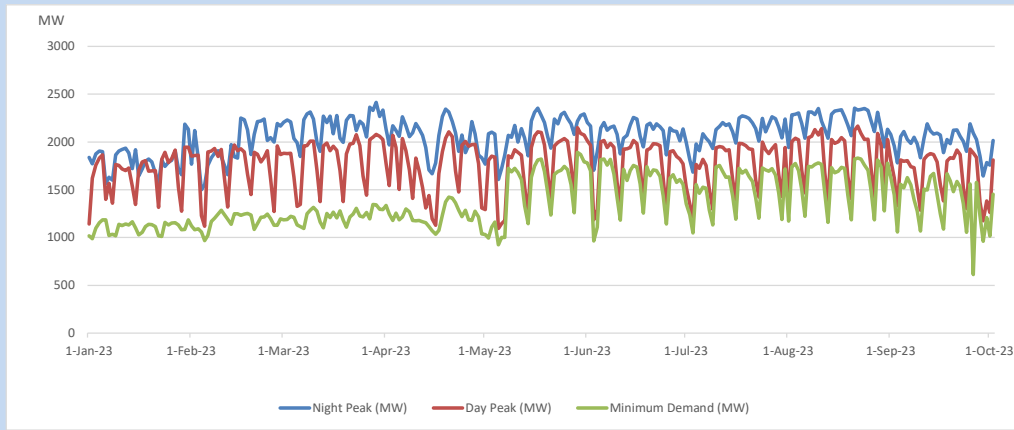
11. Comparison of Total Reservoir Storage Levels with Past Years



12. Variation of Major Hydro Reservoir Levels in the current year (GWh)



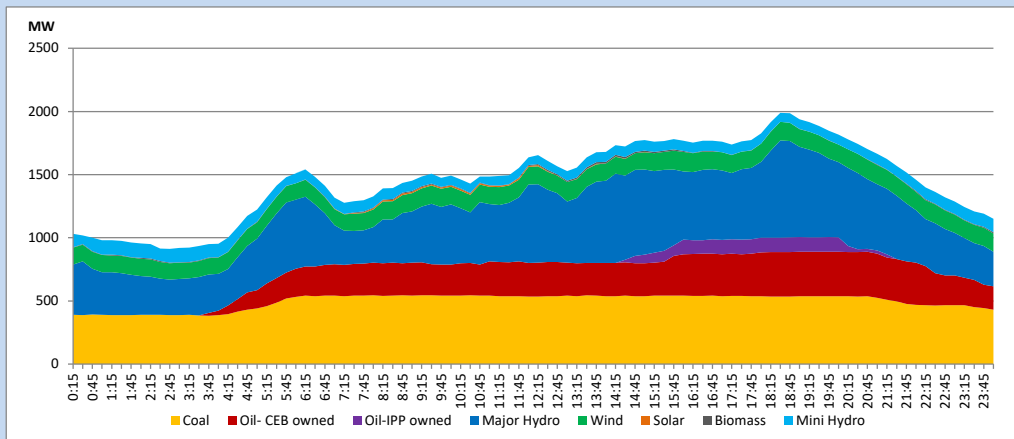
13. Variation of Demand during the current year



The above figures are excluding contribution from roof top solar, non telemetered solar and mini hydro plants

14. Daily Load Curve

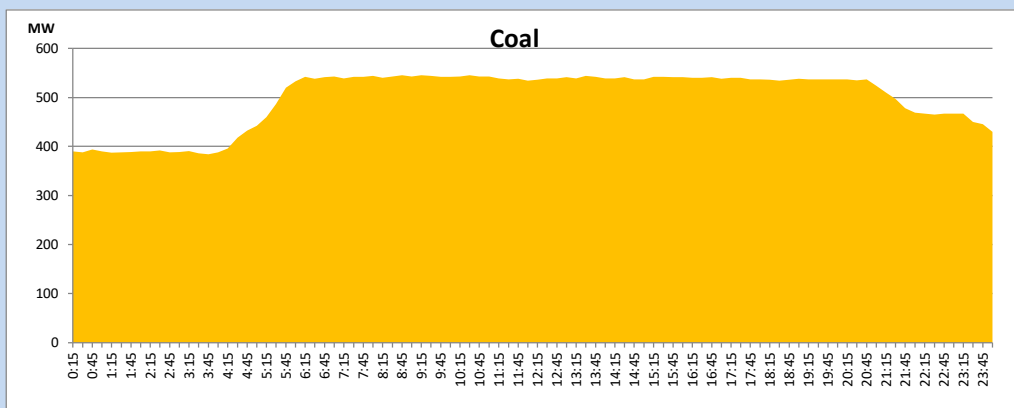
October 2, 2023



Solar and wind data is based on Telemetered Power Stations only

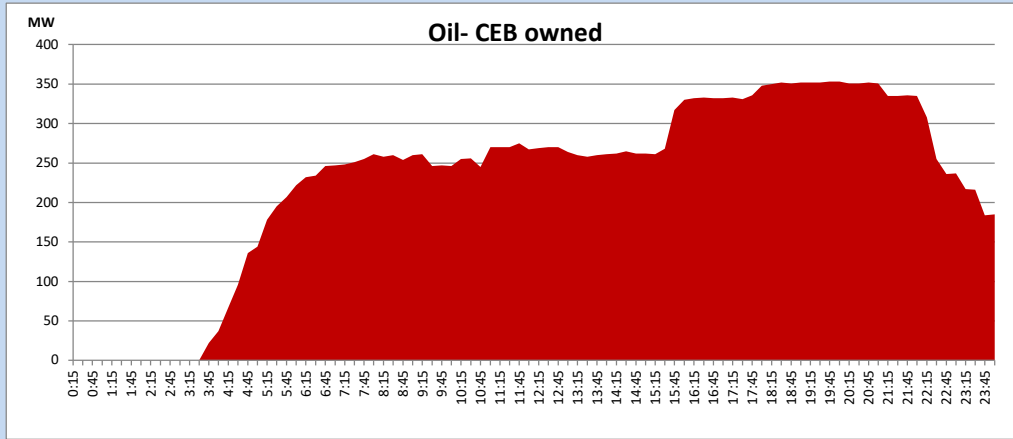
Coal Generation during

October 2, 2023



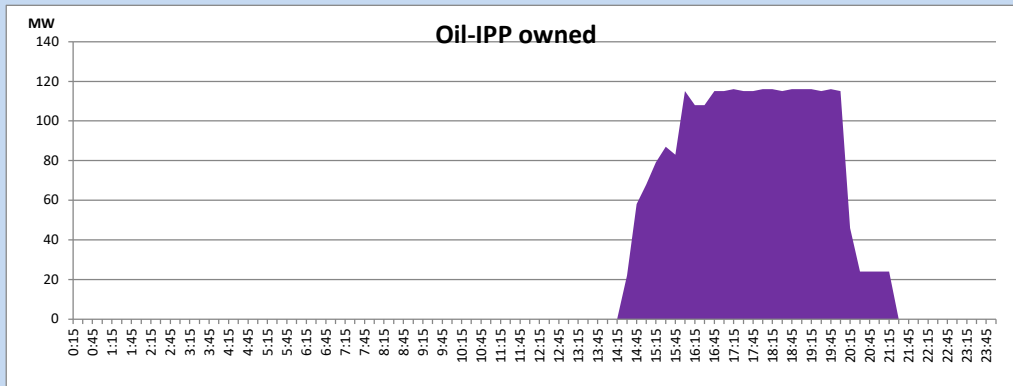
CEB Oil Plant Generation during

October 2, 2023



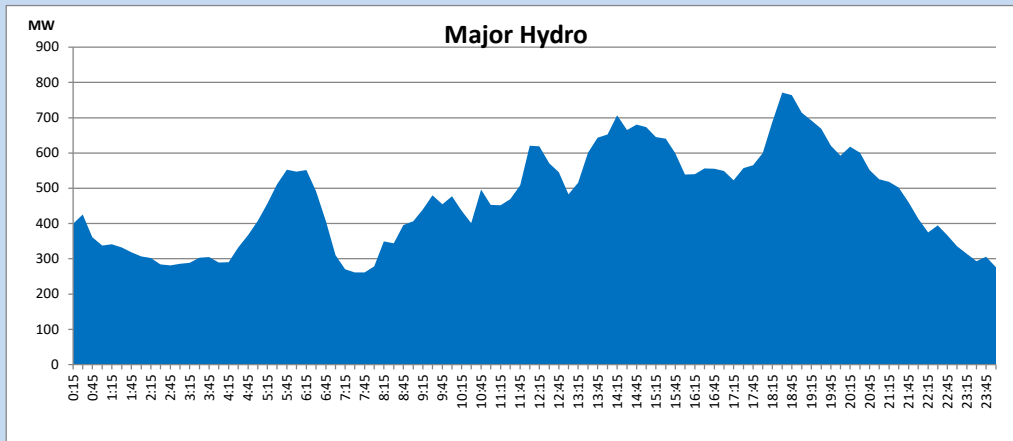
IPP Oil Plant Generation during

October 2, 2023



Major Hydro Generation during

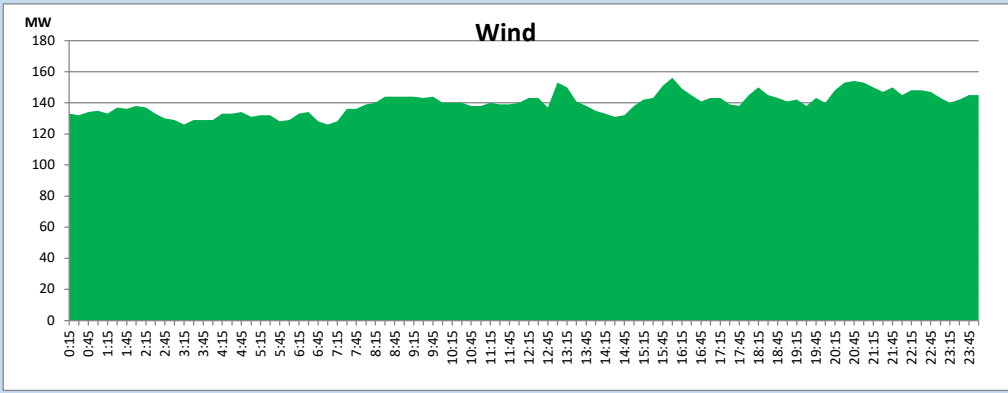
October 2, 2023



Wind Generation during

October 2, 2023

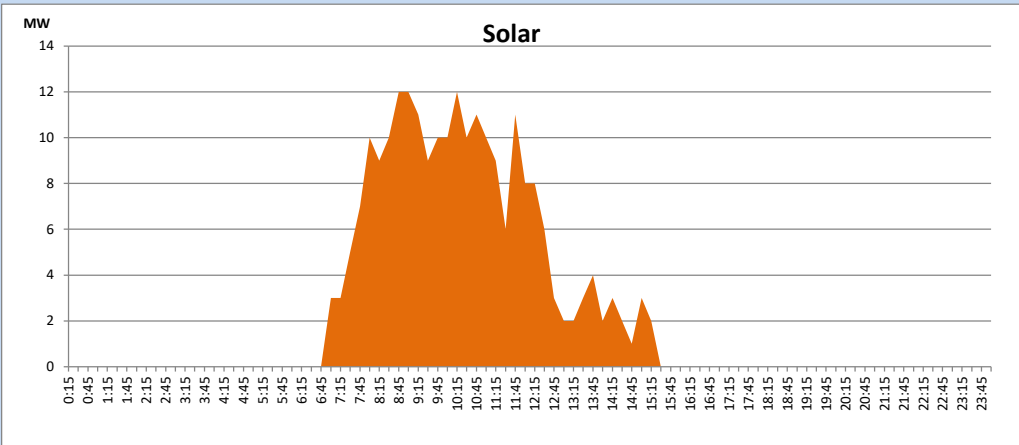
Based on Telemetered Power Stations only



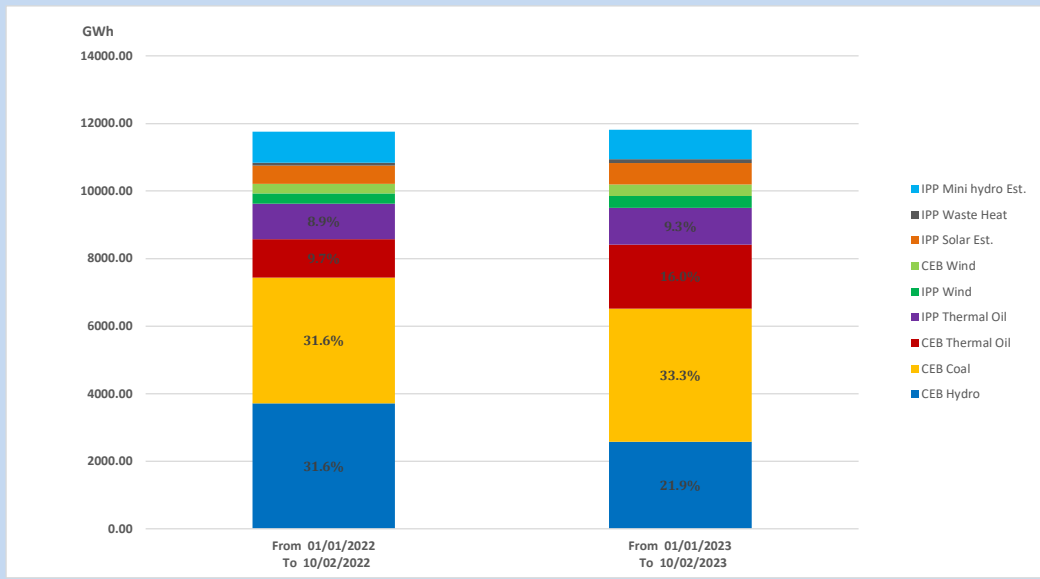
Solar Generation during

October 2, 2023

Based on Telemetered Power Stations only



15. Cumulative Dispatch Comparison with Last Year



Cumulative dispatch

From 01/01/2022 To 10/02/2022

11798 GWh

From 01/01/2023 To 10/02/2023

12230 GWh

The above figures are including contribution from roof top solar, non telemetered solar and mini hydro plants (figures have been adjusted based on the data from the CEB monthly review reports.)

Thermal Plant Fuel types**Table 08**

Power Station	Primary Fuel
CEB Thermal	
Sapugaskanda 1	Heavy Fuel
Sapugaskanda 2	Heavy Fuel
Kelanitissa Small Gas Turbines	Auto Diesel
GT 7 - Kelanitissa	Auto Diesel
Kelanitissa CCY	Naphtha or Diesel
Lakvijaya 1	Coal
Lakvijaya 2	Coal
Lakvijaya 3	Coal
Uthuru Janani	Heavy Fuel
Barge CEB	Heavy Fuel
KCCPS -2	Auto Diesel

Power Station	Primary Fuel
Private Thermal	
West Coast	Auto Diesel / Heavy Fuel
ACE Matara	Heavy Fuel
ACE Embilipitiya	Heavy Fuel

Major Incidents reported during the day

October 2, 2023

- 1) Kukule spilling continues to present hour.
- 2) At 10:42hrs, system frequency dropped to 49.3Hz due to a tripping of embedded generation.