

Generation and Reservoirs Statistics

October 1, 2023



PUBLIC UTILITIES COMMISSION OF SRI LANKA

1. Daily Generation Mix in MWh

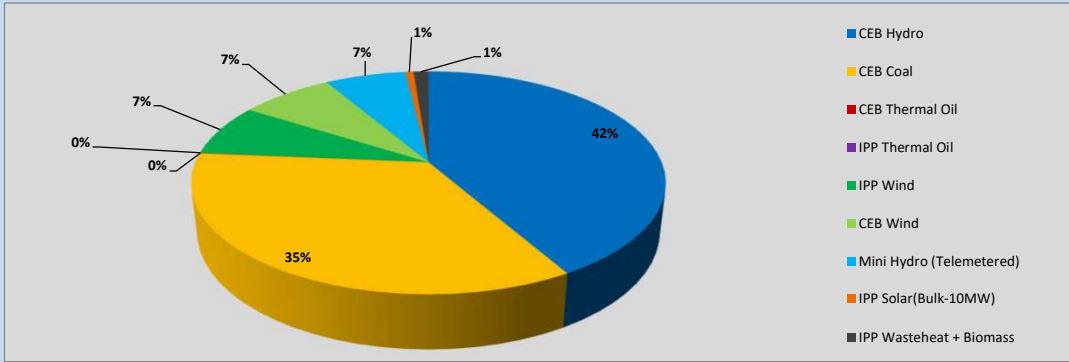


Table 01

	Generation (MWh)
CEB Hydro	12,581
CEB Coal	10,466
CEB Thermal Oil	15
IPP Thermal Oil	-
IPP Wind	2,279
CEB Wind	2,279
Mini Hydro (Telemetered)	1,985
IPP Solar (Bulk)	207
IPP Waste heat + Biomass	368
Total Generation (Excluding estimated figures)	30,180
* Estimated unserved energy	0
* Estimated Mini Hydro (Non telemetered)	2875
* Estimated IPP Solar PV (Bulk 1-10MW)	304
* Estimated Solar Roof Top PV	1930
Total Generation (Including estimated figures)	35,289

* Estimated figures of CEB generation report

Table 02

	Installed Capacity (MW)
CEB Hydro	1409
CEB Coal	810
CEB Thermal Oil	781
IPP Thermal Oil (West Coast, ACE Matara and ACE Embilipitiya)	387
IPP Wind	148
CEB Wind	100
Mini Hydro	416
IPP Waste heat + Biomass	50
IPP Solar	130
Rooftop Solar* (Ordinary)	267
Rooftop Solar* (LT Bulk)	256
Rooftop Solar* (HT Bulk)	61

Data Source - Monthly Review Report [May-2023]

2. Cumulative Dispatch

Following data excludes the contribution from roof top solar, non telemetered solar and mini hydro plants

Table 03 - Current Month

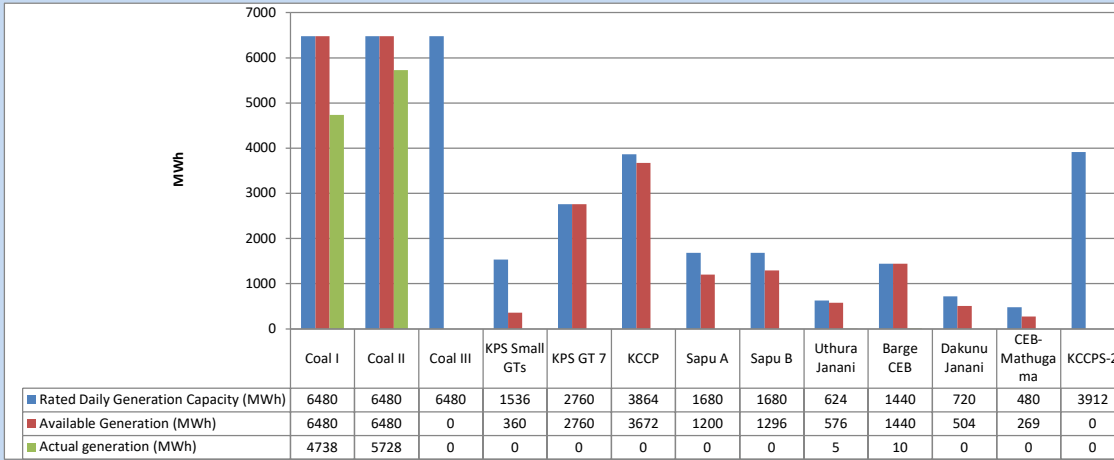
Category	Dispatch (GWh)	
CEB Hydro	13	41.68%
CEB Coal	10	34.69%
CEB Thermal Oil	0	0.03%
IPP Thermal	0	0.00%
SPP Wind	2	7.55%
CEB Wind	2	7.55%
Mini Hydro (Telemetered)	2	6.56%
IPP Solar(Bulk-10MW)	0	0.70%
IPP Waste heat + BMP	0	1.23%
Total	30	

Table 04 - Current Year

Category	Dispatch (GWh)	
CEB Hydro	2,578	24.34%
CEB Coal	3,930	37.09%
CEB Thermal Oil	1,894	17.87%
IPP Thermal	1,095	10.33%
SPP Wind	328	3.09%
CEB Wind	334	3.15%
Mini Hydro (Telemetered)	254	2.39%
IPP Solar(Bulk-10MW)	83	0.78%
IPP Waste heat	100	0.94%
Total	10,594	

3. CEB owned Thermal Plant Dispatch

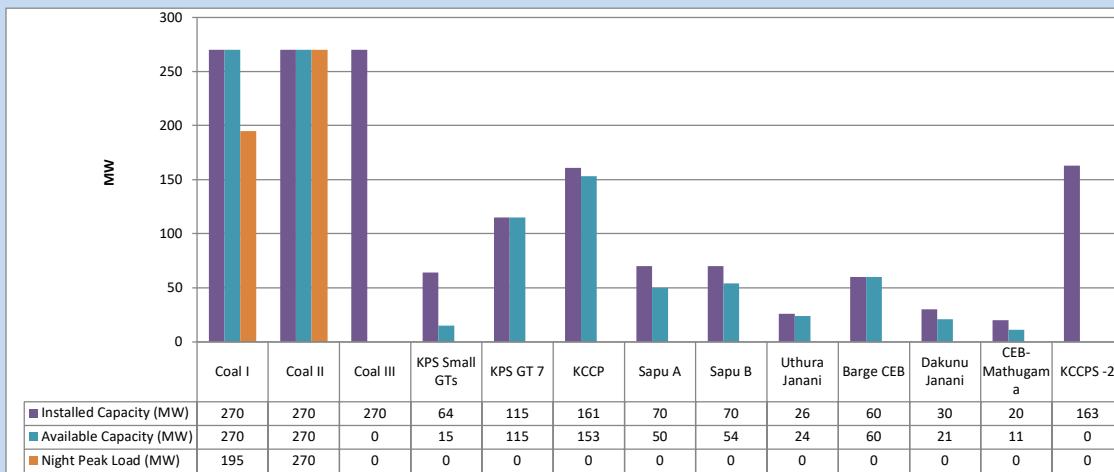
October 1, 2023



Available Generation is estimated based on plant availability at 6.00am on

October 2, 2023

4. CEB owned Thermal Plant Loading at the Night Peak

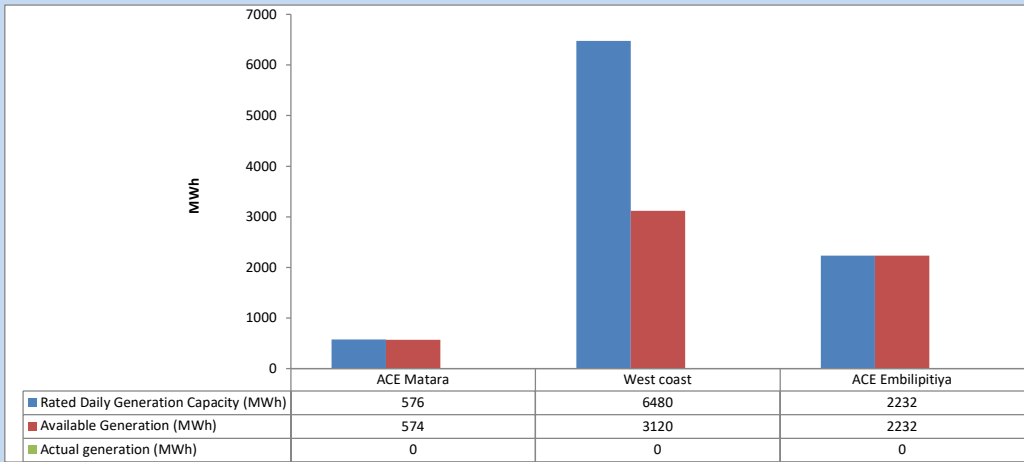


Plant availability is recorded at 6.00 am on

October 2, 2023

5. IPP owned Thermal Plant Dispatch

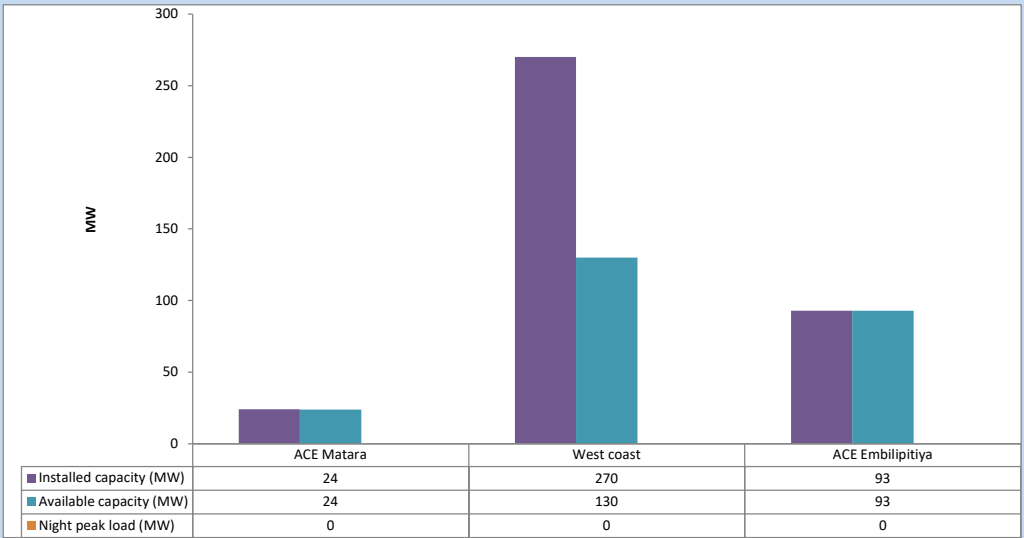
October 1, 2023



Available Generation is estimated based on plant availability at 6.00am on

October 2, 2023

6. IPP owned Thermal Plant Loading at the Night Peak

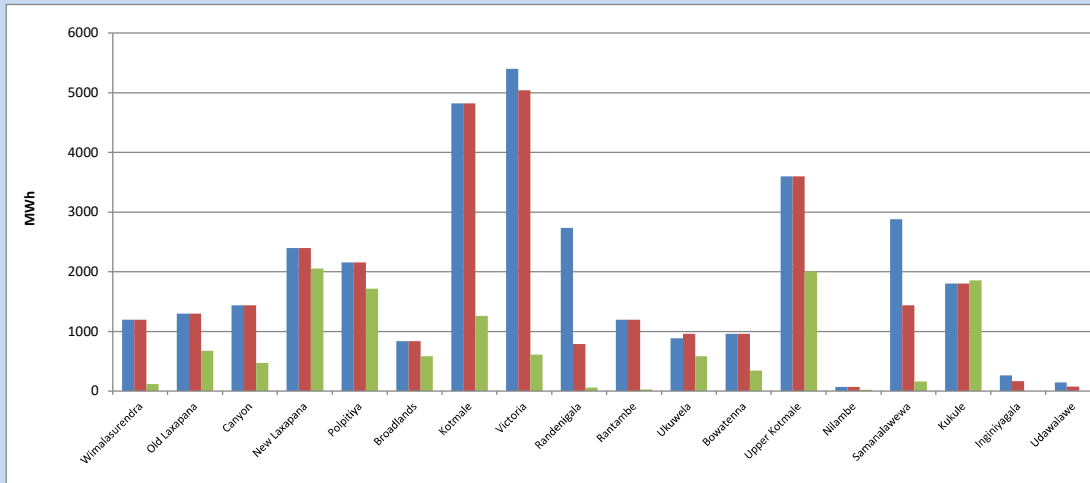


Plant availability is recorded at 6.00 am on

October 2, 2023

7. Major Hydro Plant Dispatch

October 1, 2023

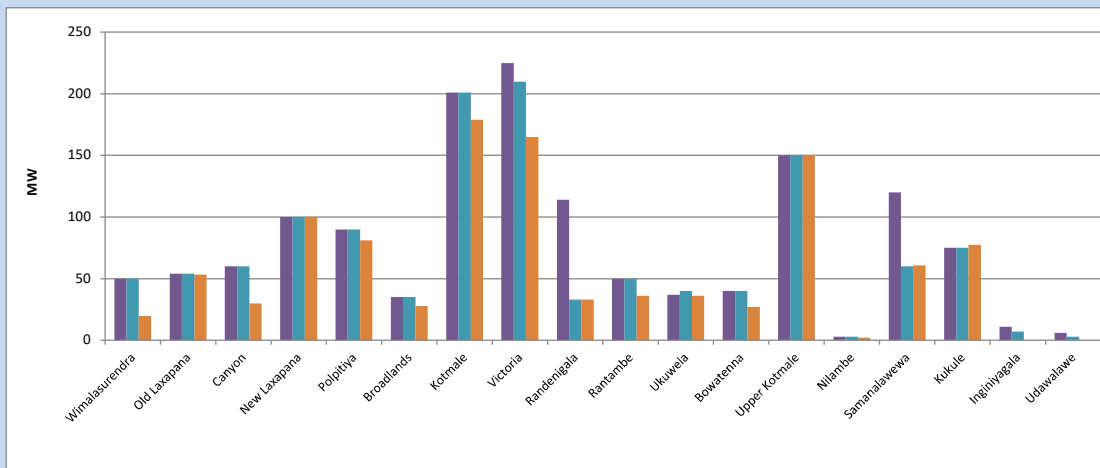


Available Generation is estimated based on plant availability at 6.00am on October 2, 2023
Broadlands power plant is operating in the Commissioning Stage

October 2, 2023

8. Major Hydro Plant Loading at Night Peak

October 1, 2023



Plant availability is recorded at 6.00 am on October 2, 2023
Broadlands power plant is operating in the Commissioning Stage

October 2, 2023

9. Summary of Major Plant performance

Table 05

Plant	Installed Capacity (MW)	Plant Availability (MW)	Night peak Load (MW)	Plant Dispatch (MWh)
Wimalasurendra	50	50	20	118
Old Laxapana Canyon	54	54	53	676
New Laxapana	60	60	30	475
Polpitiya	100	100	100	2,056
Broadlands	90	90	81	1,720
Kotmale	35	35	28	584
Kotmale	201	201	179	1,260
Victoria	225	210	165	614
Randenigala	114	33	33	64
Rantambe	50	50	36	30
Ukuwela	37	40	36	589
Bowatenna	40	40	27	344
Upper Kotmale	150	150	150	2,007
Nilambe	3	3	2	26
Samanalawewa	120	60	61	159
Kukule	75	75	77	1,859
Inginiyagala	11	7	0	0
Udawalawe	6	3	0	0
Puttalam Coal I	270	270	195	4,738
Puttalam Coal II	270	270	270	5,728
Puttalam Coal III	270	0	0	0
KPS Small GTs	64	15	0	0
KPS GT 7	115	115	0	0
KCCP	161	153	0	0
Sapugaskanda A	70	50	0	0
Sapugaskanda B	70	54	0	0
Uthura Janani	26	24	0	5
Barge CEB	60	60	0	10
CEB-Hambantota	30	21	0	0
CEB-Mathugama	20	11	0	0
ACE Matara	24	24	0	0
Asia Power	50	0	0	0
KCCPS -2	163	0	0	0
West Coast	270	130	0	0
Nothern Power	36	0	0	0
ACE Embilipitiya	93	93	0	0
Total	3,483	2,551	1,782	30,180

Plant availability is the availability recorded at 6 am on

October 2, 2023

10. Contribution to the Night Peak in MW

October 1, 2023

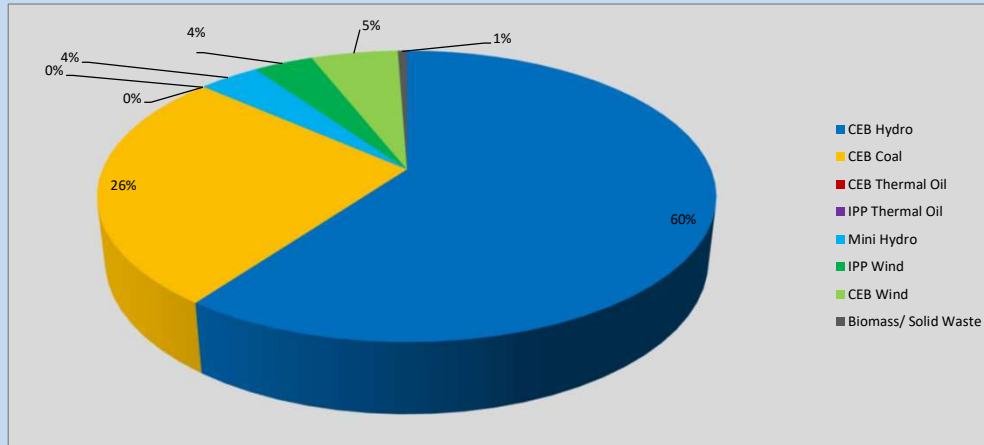


Table 06

CEB Hydro	1058	MW
CEB Coal	465	MW
CEB Thermal Oil	0	MW
IPP Thermal Oil	0	MW
Mini Hydro (Telemetered)	67	MW
IPP Wind	65.7	MW
CEB Wind	95.7	MW
Biomass/ Solid Waste	10	MW

Recorded Peak Demand Data

Table 07

Night Peak*	1,761	MW
Day Peak Maximum Demand	1,262	MW
Day Peak Minimum Demand	1,015	MW
Off Peak Minimum Demand	949	MW

Above figures are excluding contribution from roof top solar, non telemetered solar and mini hydro plants

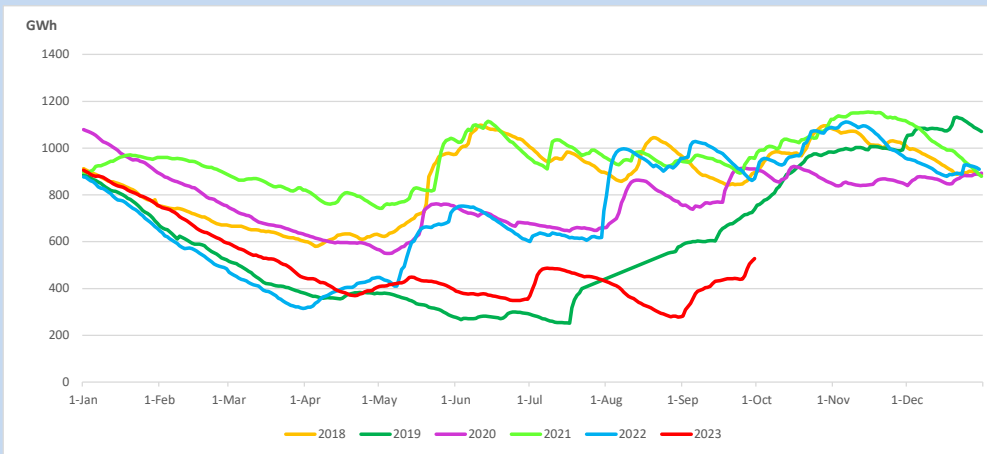
Reservoir Levels -

as at 06.00 Hr on October 2, 2023

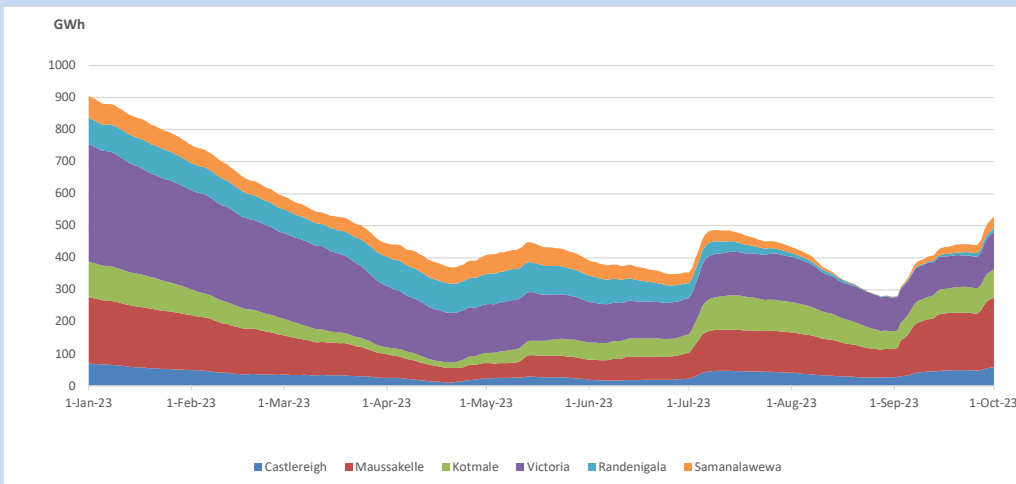


Total Reservoir Level 527.8 GWh
 % of Total capacity 43.8%

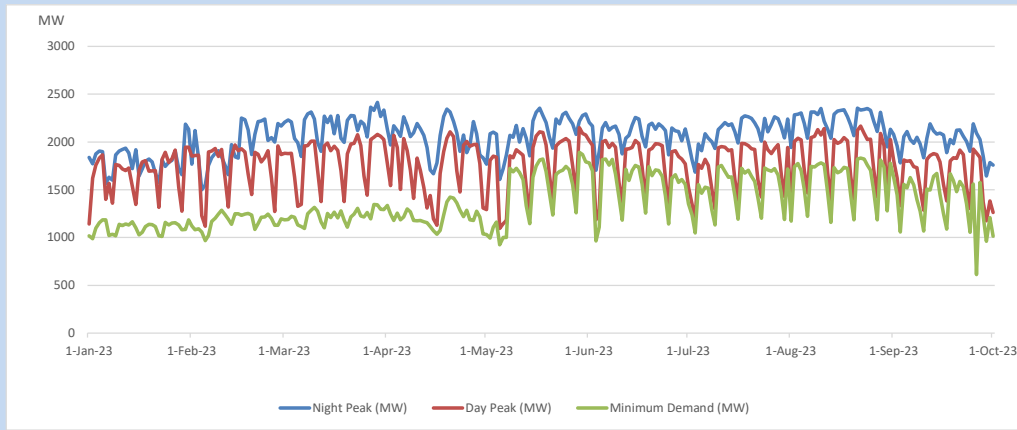
11. Comparison of Total Reservoir Storage Levels with Past Years



12. Variation of Major Hydro Reservoir Levels in the current year (GWh)



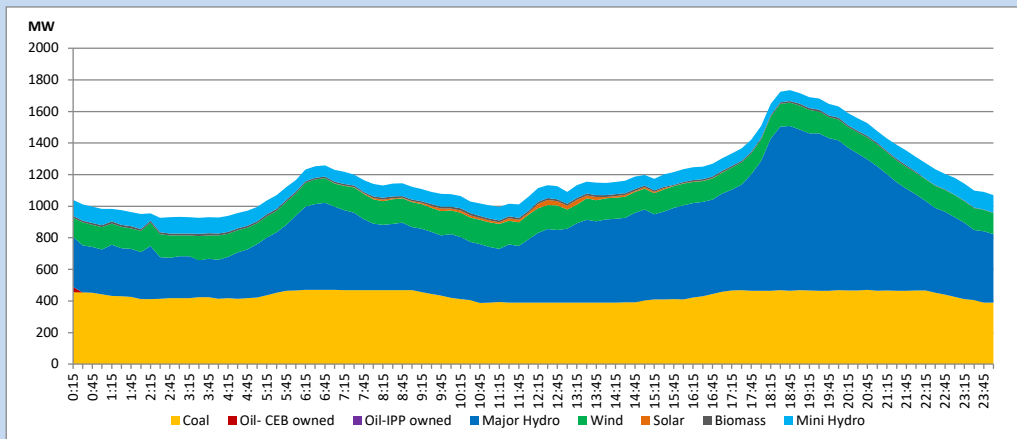
13. Variation of Demand during the current year



The above figures are excluding contribution from roof top solar, non telemetered solar and mini hydro plants

14. Daily Load Curve

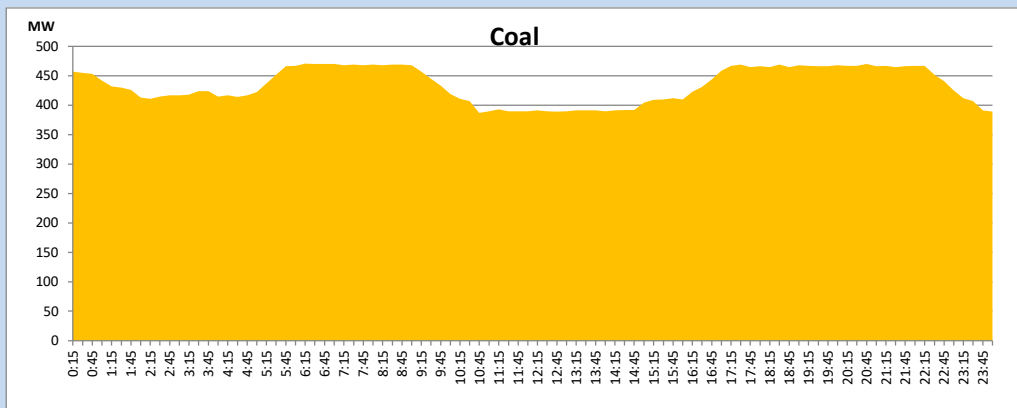
October 1, 2023



Solar and wind data is based on Telemetered Power Stations only

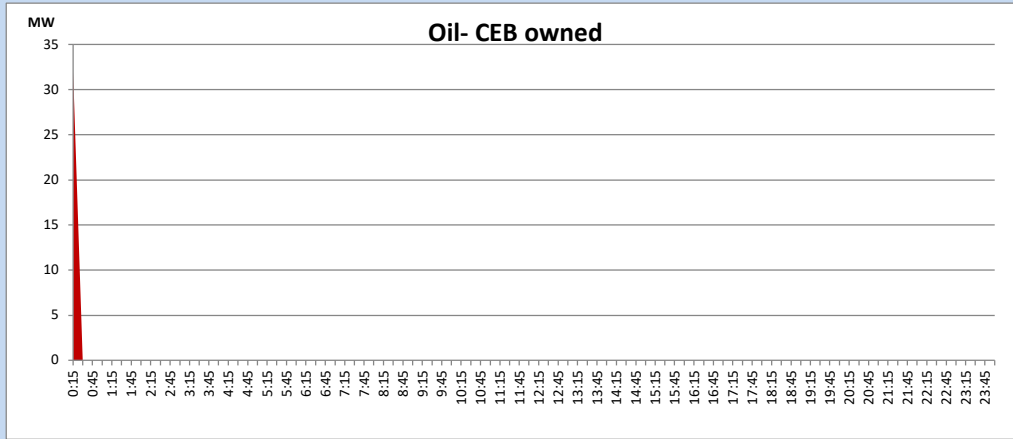
Coal Generation during

October 1, 2023



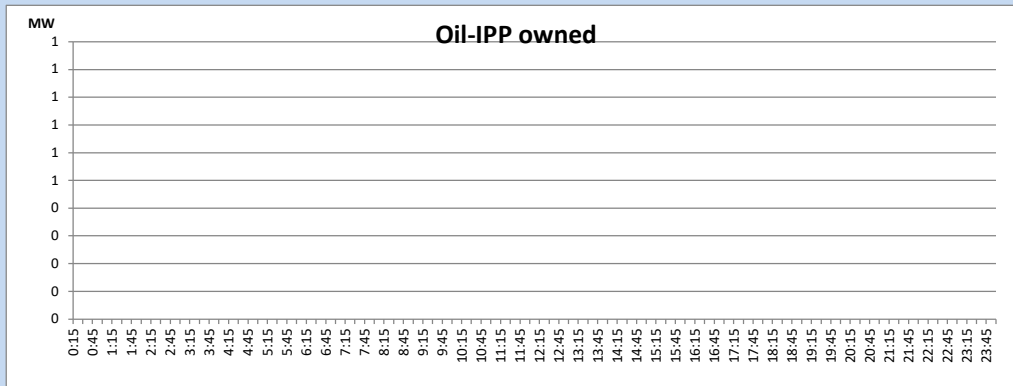
CEB Oil Plant Generation during

October 1, 2023



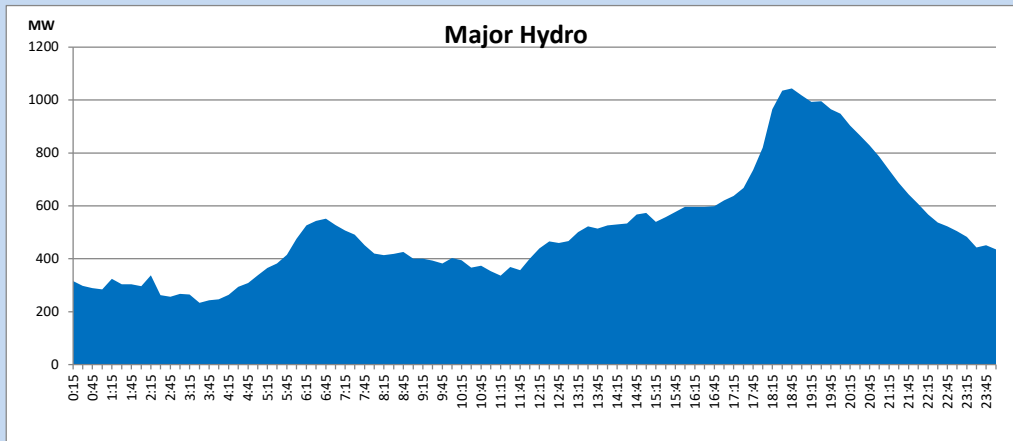
IPP Oil Plant Generation during

October 1, 2023



Major Hydro Generation during

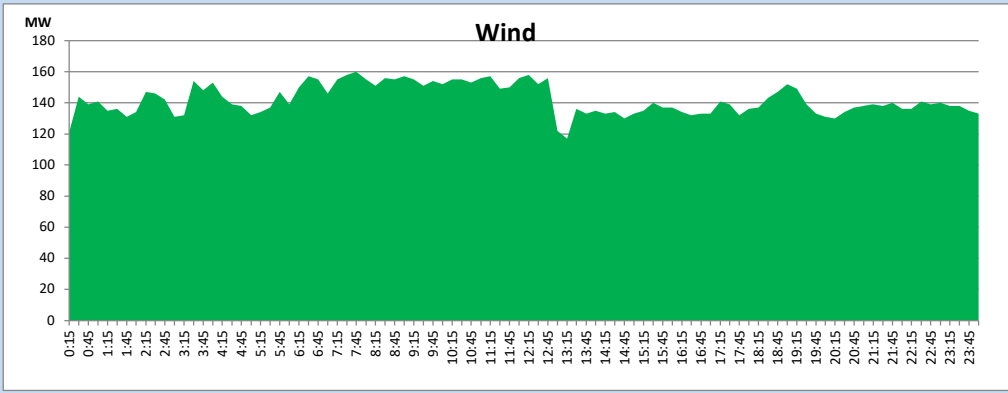
October 1, 2023



Wind Generation during

October 1, 2023

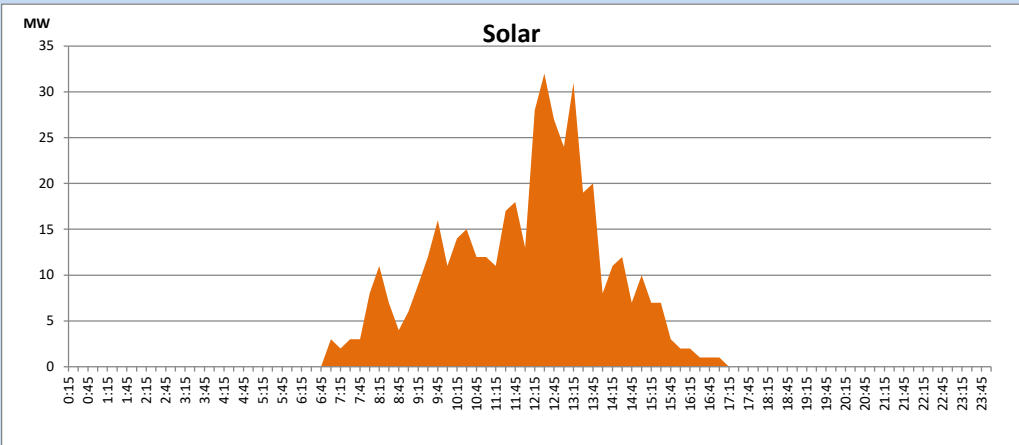
Based on Telemetered Power Stations only



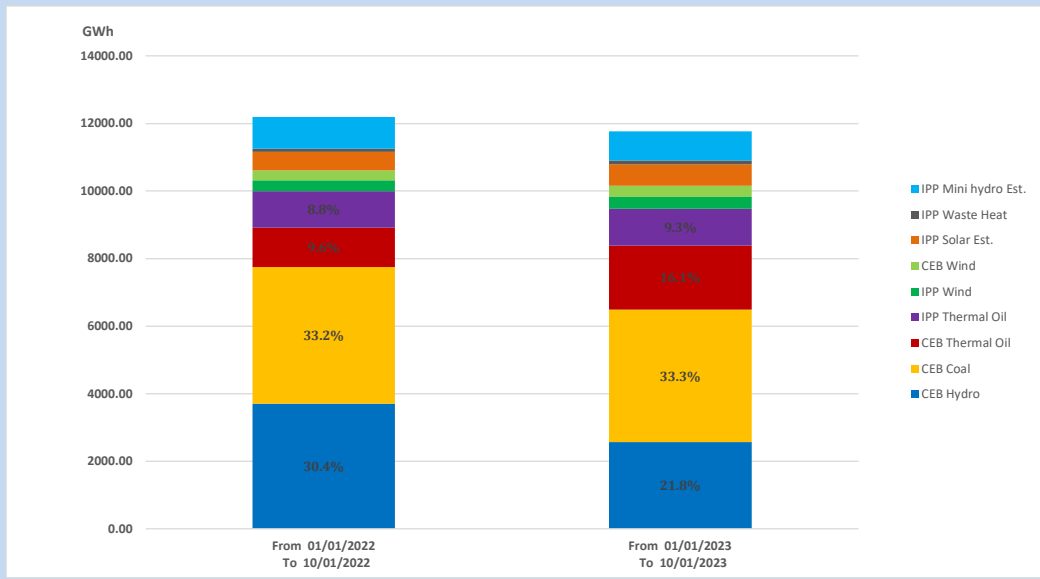
Solar Generation during

October 1, 2023

Based on Telemetered Power Stations only



15. Cumulative Dispatch Comparison with Last Year



Cumulative dispatch

From 01/01/2022 To 10/01/2022

12193 GWh

From 01/01/2023 To 10/01/2023

11767 GWh

The above figures are including contribution from roof top solar, non telemetered solar and mini hydro plants (figures have been adjusted based on the data from the CEB monthly review reports.)

Thermal Plant Fuel types

Table 08

Power Station	Primary Fuel
CEB Thermal	
Sapugaskanda 1	Heavy Fuel
Sapugaskanda 2	Heavy Fuel
Kelanitissa Small Gas Turbines	Auto Diesel
GT 7 - Kelanitissa	Auto Diesel
Kelanitissa CCY	Naphtha or Diesel
Lakvijaya 1	Coal
Lakvijaya 2	Coal
Lakvijaya 3	Coal
Uthuru Janani	Heavy Fuel
Barge CEB	Heavy Fuel
KCCPS -2	Auto Diesel

Power Station	Primary Fuel
Private Thermal	
West Coast	Auto Diesel / Heavy Fuel
ACE Matara	Heavy Fuel
ACE Embilipitiya	Heavy Fuel

Major Incidents reported during the day

October 1, 2023

- 1) Ukuwela unit 01 resumed generation at 17:35hrs after being released for annual maintenance on 11.09.2023
- 2) LVPS unit 01 which was de-loaded to 197MW (net) on 09.09.2023 reached full load at 06:00hrs.
- 3) Kukule spilling continues to present hour.