

Generation and Reservoirs Statistics

August 29, 2023



PUBLIC UTILITIES COMMISSION OF SRI LANKA

1. Daily Generation Mix in MWh

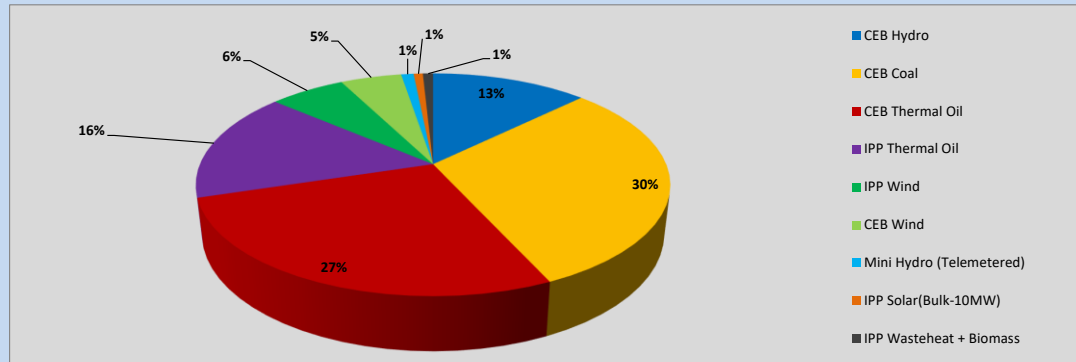


Table 01

	Generation (MWh)
CEB Hydro	5,439
CEB Coal	12,990
CEB Thermal Oil	11,554
IPP Thermal Oil	6,842
IPP Wind	2,630
CEB Wind	2,127
Mini Hydro (Telemetered)	433
IPP Solar (Bulk)	321
IPP Waste heat + Biomass	356
Total Generation (Excluding estimated figures)	42,692
* Estimated unserved energy	0
* Estimated Mini Hydro (Non telemetered)	3337
* Estimated IPP Solar PV (Bulk 1-10MW)	304
* Estimated Solar Roof Top PV	1650
Total Generation (Including estimated figures)	47,983

* Estimated figures of CEB generation report

Table 02

	Installed Capacity (MW)
CEB Hydro	1409
CEB Coal	810
CEB Thermal Oil	781
IPP Thermal Oil (West Coast, ACE Matara)	294
IPP Wind	148
CEB Wind	100
Mini Hydro	416
IPP Waste heat + Biomass	50
IPP Solar	130
Rooftop Solar* (Ordinary)	267
Rooftop Solar* (LT Bulk)	256
Rooftop Solar* (HT Bulk)	61

Data Source - Monthly Review Report [May-2023]

2. Cumulative Dispatch

Following data excludes the contribution from roof top solar, non telemetered solar and mini hydro plants

Table 03 - Current Month

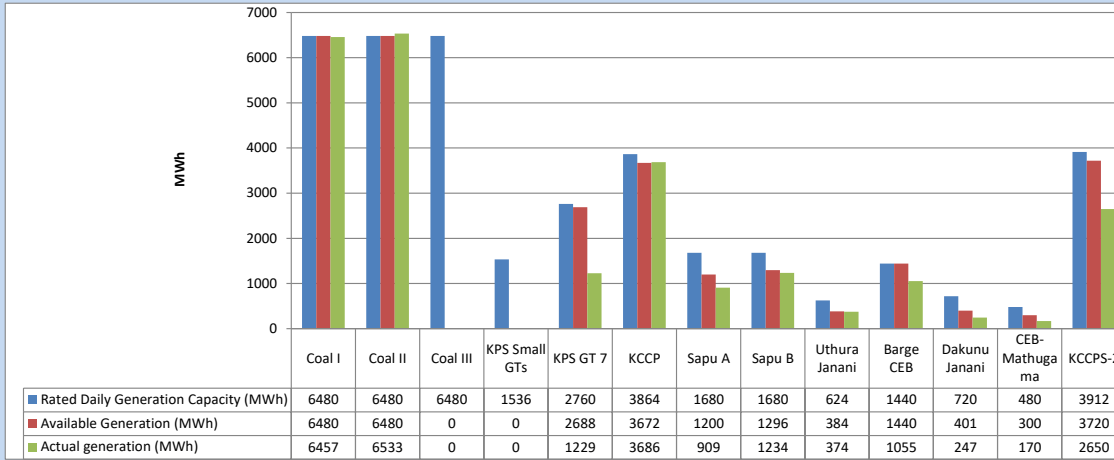
Category	Dispatch (GWh)	
CEB Hydro	240	19.74%
CEB Coal	309	25.38%
CEB Thermal Oil	363	29.84%
IPP Thermal	174	14.28%
SPP Wind	48	3.91%
CEB Wind	51	4.16%
Mini Hydro (Telemetered)	8	0.67%
IPP Solar(Bulk-10MW)	11	0.87%
IPP Waste heat + BMP	14	1.14%
Total	1,216	

Table 04 - Current Year

Category	Dispatch (GWh)	
CEB Hydro	2,287	24.37%
CEB Coal	3,559	37.92%
CEB Thermal Oil	1,667	17.76%
IPP Thermal	977	10.42%
SPP Wind	258	2.75%
CEB Wind	267	2.85%
Mini Hydro (Telemetered)	209	2.23%
IPP Solar(Bulk-10MW)	74	0.79%
IPP Waste heat	87	0.92%
Total	9,384	

3. CEB owned Thermal Plant Dispatch

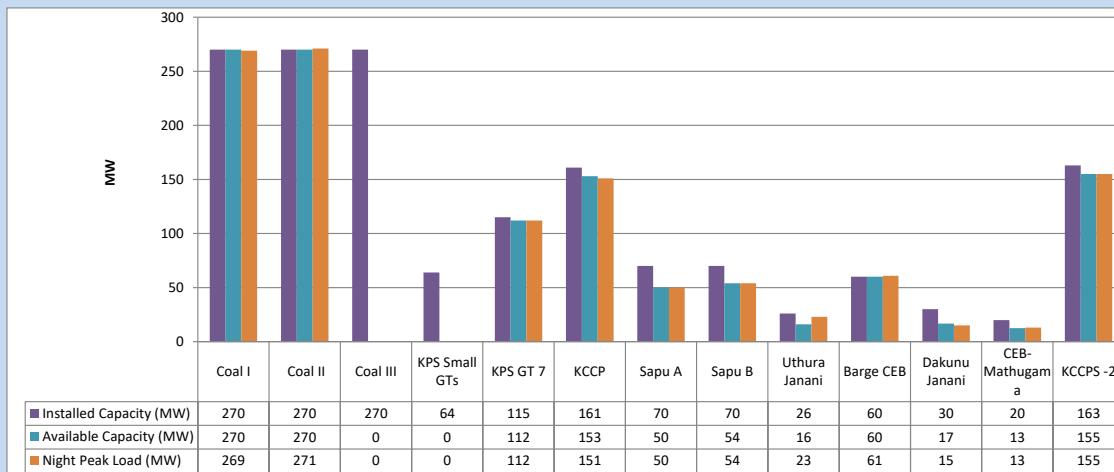
August 29, 2023



Available Generation is estimated based on plant availability at 6.00am on

August 30, 2023

4. CEB owned Thermal Plant Loading at the Night Peak

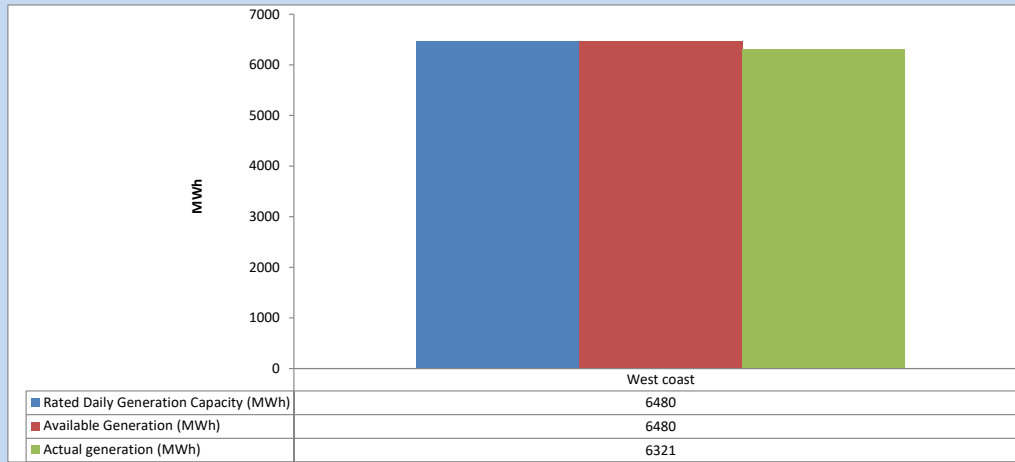


Plant availability is recorded at 6.00 am on

August 30, 2023

5. IPP owned Thermal Plant Dispatch

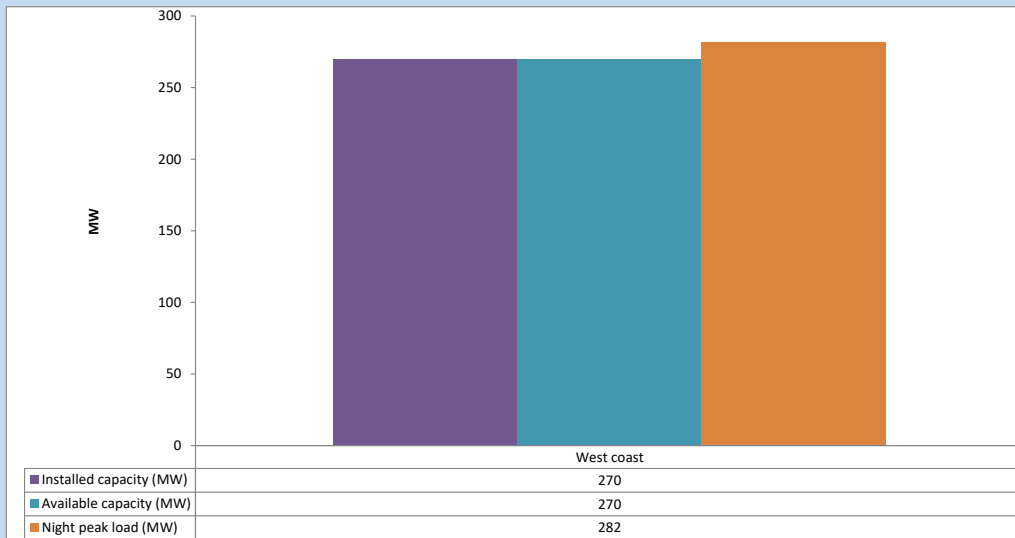
August 29, 2023



Available Generation is estimated based on plant availability at 6.00am on

August 30, 2023

6. IPP owned Thermal Plant Loading at the Night Peak

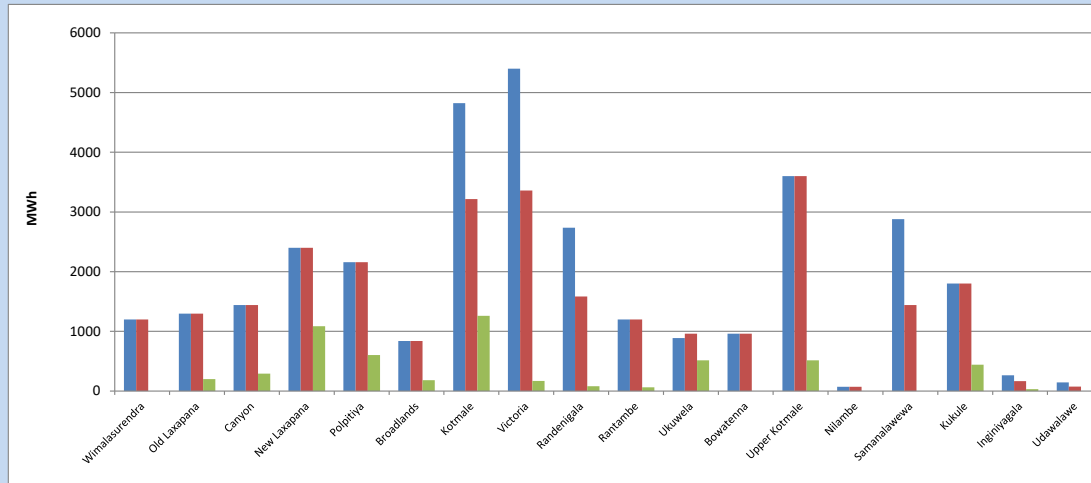


Plant availability is recorded at 6.00 am on

August 30, 2023

7. Major Hydro Plant Dispatch

August 29, 2023

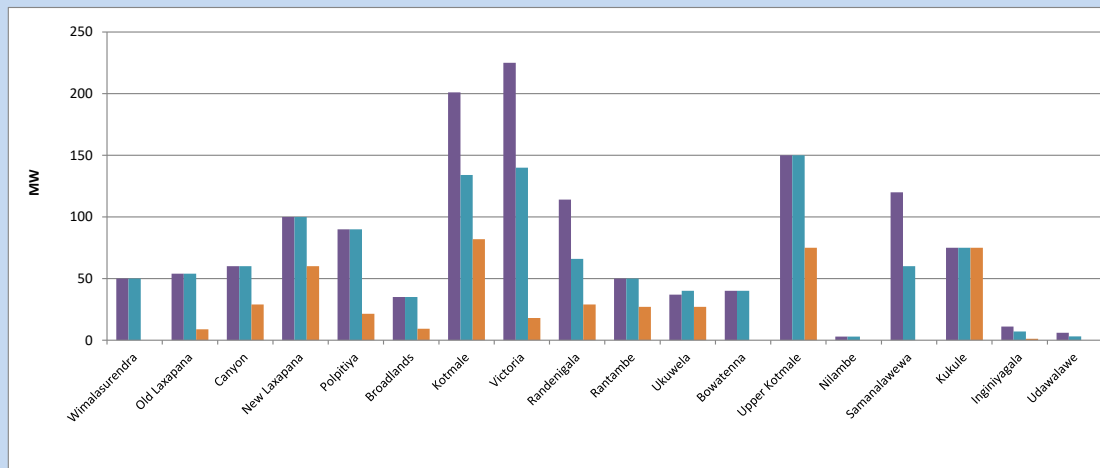


Available Generation is estimated based on plant availability at 6.00am on August 30, 2023
Broadlands power plant is operating in the Commissioning Stage

August 30, 2023

8. Major Hydro Plant Loading at Night Peak

August 29, 2023



Plant availability is recorded at 6.00 am on August 30, 2023
Broadlands power plant is operating in the Commissioning Stage

August 30, 2023

9. Summary of Major Plant performance

Table 05

Plant	Installed Capacity (MW)	Plant Availability (MW)	Night peak Load (MW)	Plant Dispatch (MWh)
Wimalasurendra	50	50	0	0
Old Laxapana	54	54	9	200
Canyon	60	60	29	292
New Laxapana	100	100	60	1,085
Polpitiya	90	90	21	603
Broadlands	35	35	9	182
Kotmale	201	134	82	1,260
Victoria	225	140	18	169
Randenigala	114	66	29	82
Rantambe	50	50	27	62
Ukuwela	37	40	27	516
Bowatenna	40	40	0	0
Upper Kotmale	150	150	75	515
Nilambe	3	3	0	0
Samanalawewa	120	60	0	0
Kukule	75	75	75	441
Inginiyagala	11	7	1	32
Udawalawe	6	3	0	0
Puttalam Coal I	270	270	269	6,457
Puttalam Coal II	270	270	271	6,533
Puttalam Coal III	270	0	0	0
KPS Small GTs	64	0	0	0
KPS GT 7	115	112	112	1,229
KCCP	161	153	151	3,686
Sapugaskanda A	70	50	50	909
Sapugaskanda B	70	54	54	1,234
Uthura Janani	26	16	23	374
Barge CEB	60	60	61	1,055
CEB-Hambantota	30	17	15	247
CEB-Mathugama	20	13	13	170
ACE Matara	24	24	24	521
Asia Power	50	0	0	0
KCCPS -2	163	155	155	2,650
West Coast	270	270	282	6,321
Nothern Power	36	0	0	0
ACE Embilipitiya	93	0	0	0
Total	3,483	2,620	2,150	42,692

Plant availability is the availability recorded at 6 am on

August 30, 2023

10. Contribution to the Night Peak in MW

August 29, 2023

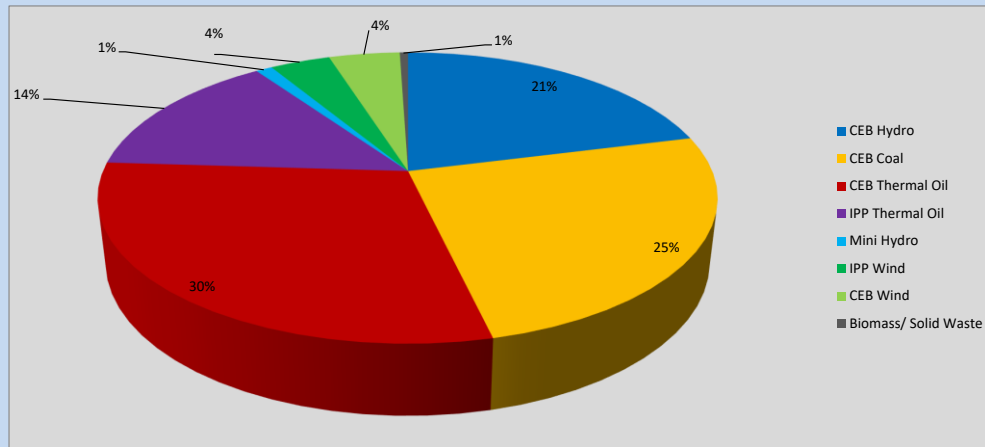


Table 06

CEB Hydro	451	MW
CEB Coal	540	MW
CEB Thermal Oil	634	MW
IPP Thermal Oil	306	MW
Mini Hydro (Telemetered)	22	MW
IPP Wind	80.3	MW
CEB Wind	94.5	MW
Biomass/ Solid Waste	11	MW

Recorded Peak Demand Data

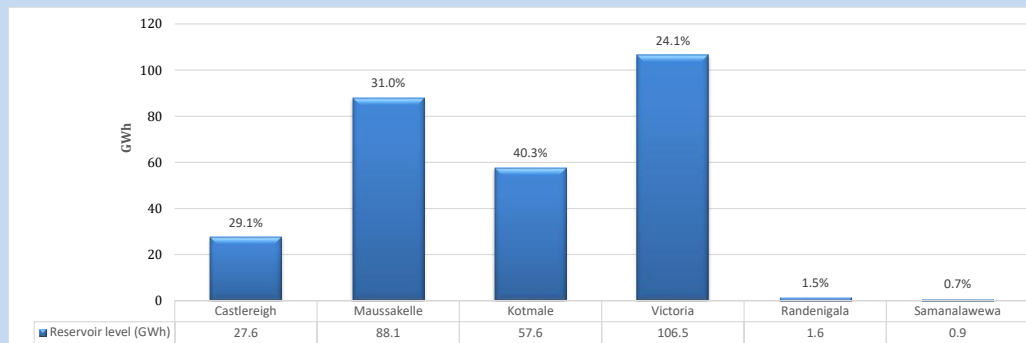
Table 07

Night Peak*	2,138	MW
Day Peak Maximum Demand	1,965	MW
Day Peak Minimum Demand	1,740	MW
Off Peak Minimum Demand	1,340	MW

Above figures are excluding contribution from roof top solar, non telemetered solar and mini hydro plants

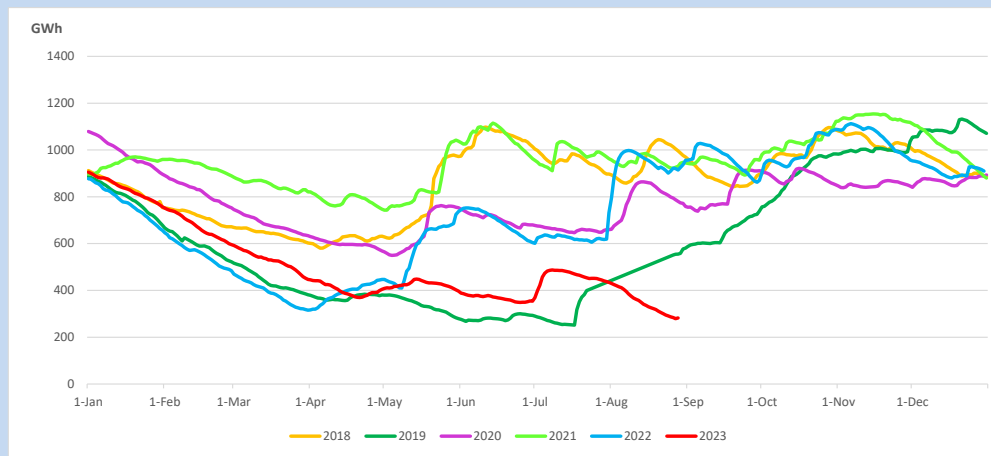
Reservoir Levels -

as at 06.00 Hr on August 30, 2023

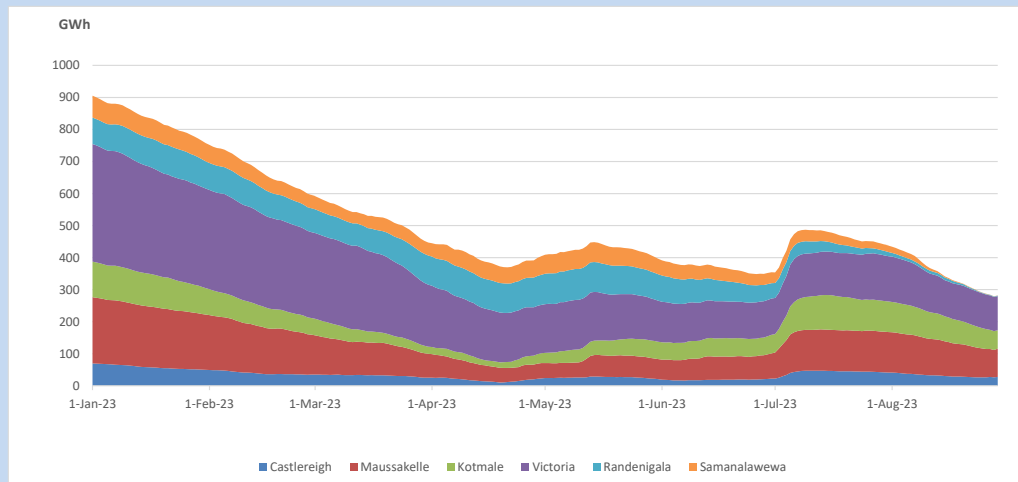


Total Reservoir Level 282.3 GWh
 % of Total capacity 23.5%

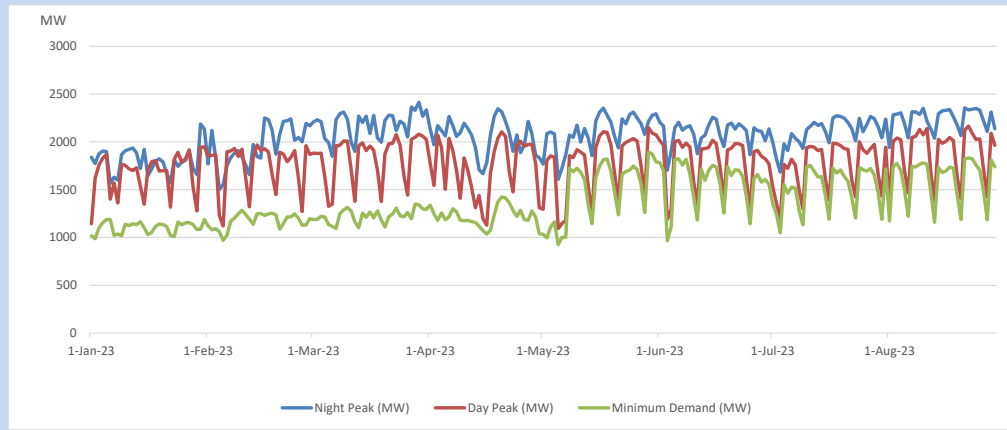
11. Comparison of Total Reservoir Storage Levels with Past Years



12. Variation of Major Hydro Reservoir Levels in the current year (GWh)



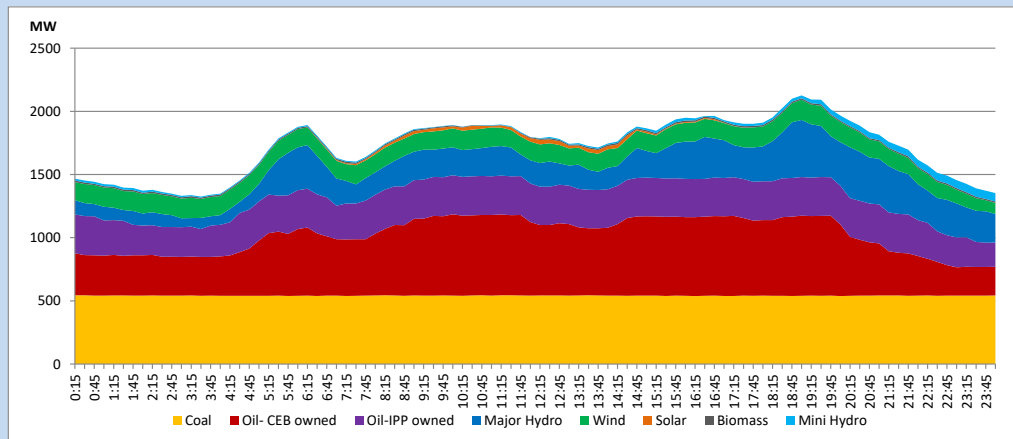
13. Variation of Demand during the current year



The above figures are excluding contribution from roof top solar, non telemetered solar and mini hydro plants

14. Daily Load Curve

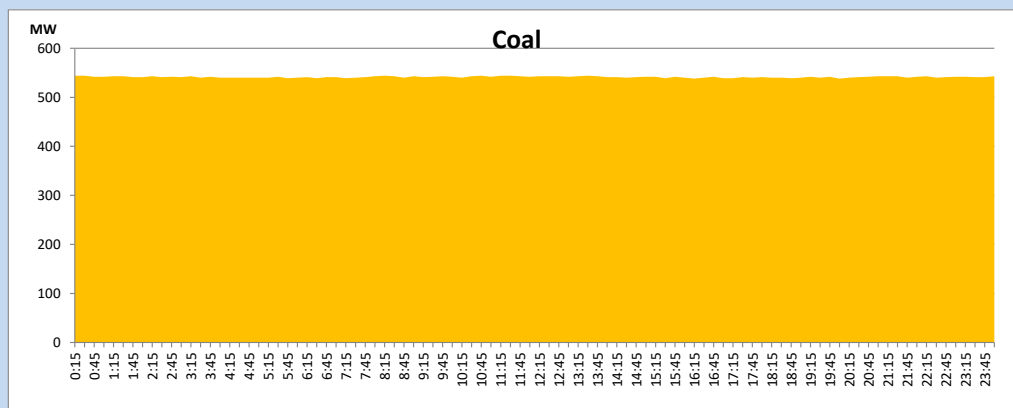
August 29, 2023



Solar and wind data is based on Telemetered Power Stations only

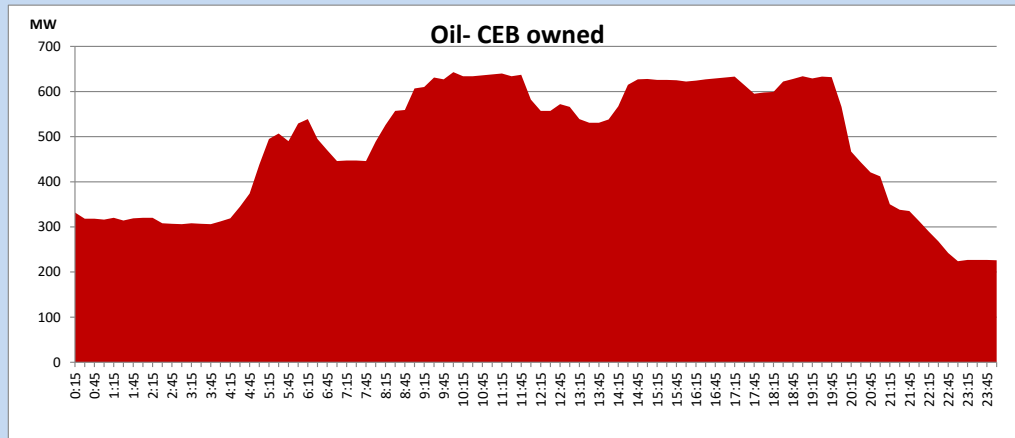
Coal Generation during

August 29, 2023



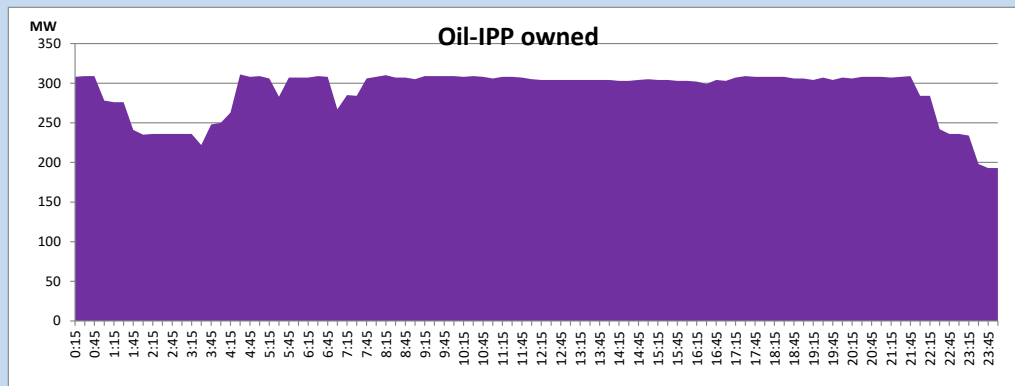
CEB Oil Plant Generation during

August 29, 2023



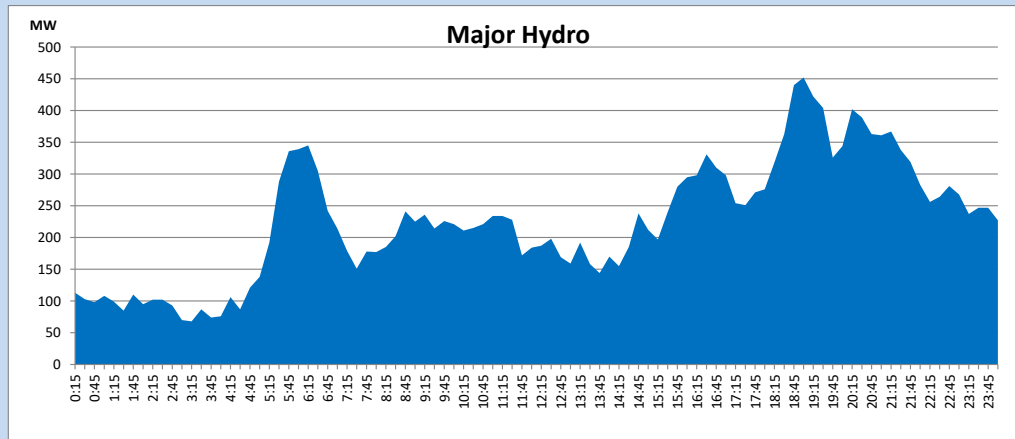
IPP Oil Plant Generation during

August 29, 2023



Major Hydro Generation during

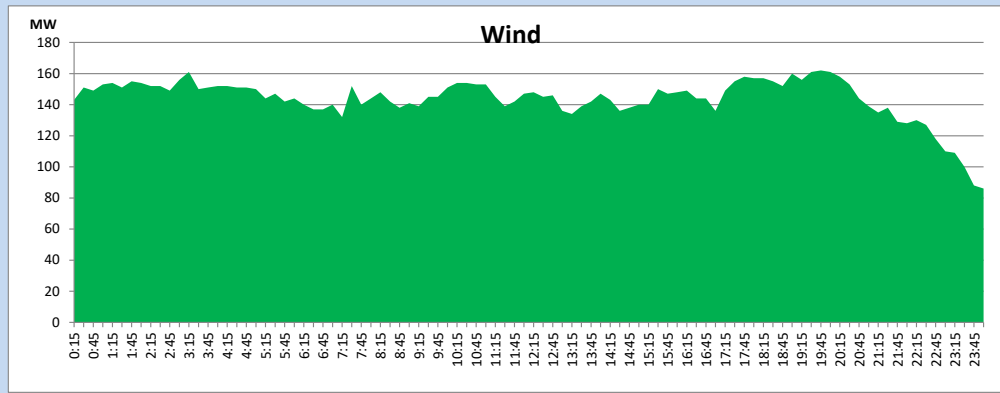
August 29, 2023



Wind Generation during

August 29, 2023

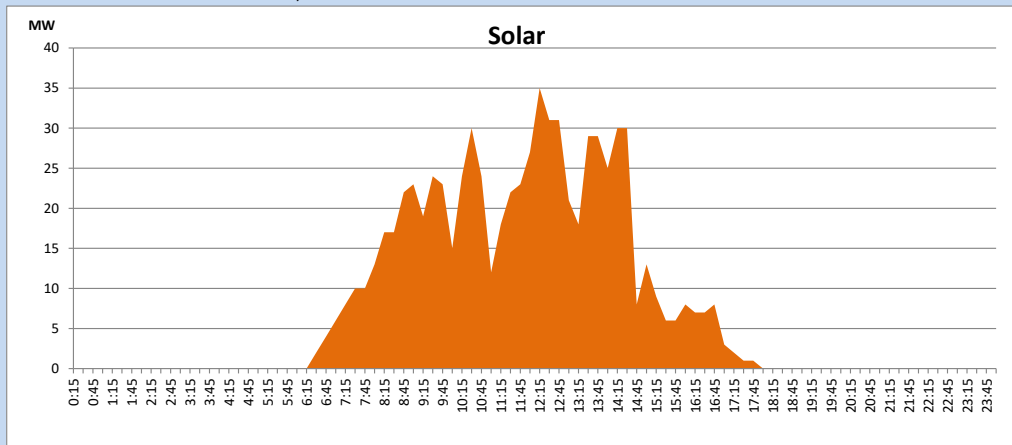
Based on Telemetered Power Stations only



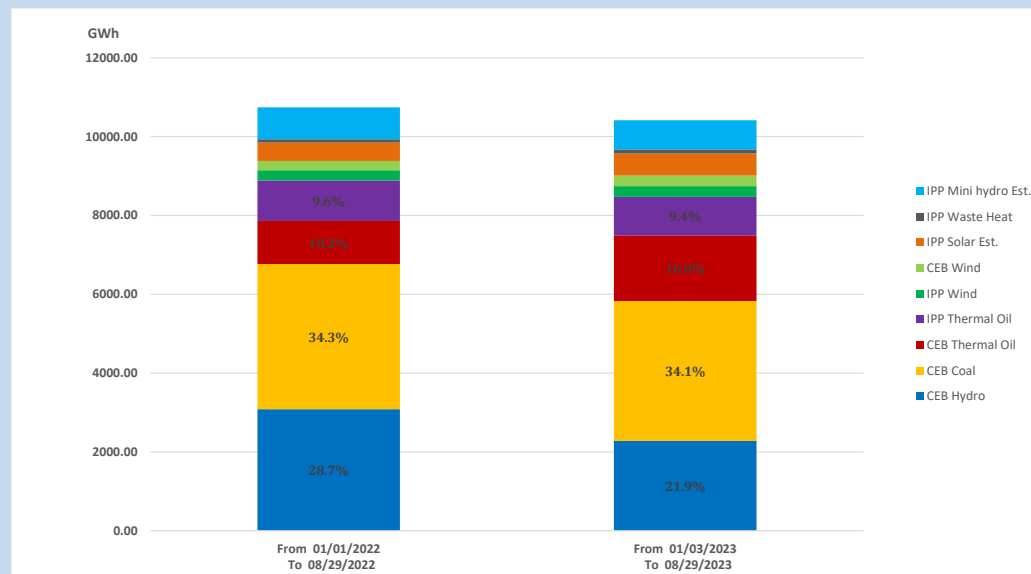
Solar Generation during

August 29, 2023

Based on Telemetered Power Stations only



15. Cumulative Dispatch Comparison with Last Year



Cumulative dispatch
 From 01/01/2022 To 08/29/2022
 From 01/01/2023 To 08/29/2023

10745 GWh
 10415 GWh

The above figures are including contribution from roof top solar, non telemetered solar and mini hydro plants (figures have been adjusted based on the data from the CEB monthly review reports.)

Thermal Plant Fuel types

Table 08

Power Station	Primary Fuel
CEB Thermal	
Sapugaskanda 1	Heavy Fuel
Sapugaskanda 2	Heavy Fuel
Kelanitissa Small Gas Turbines	Auto Diesel
GT 7 - Kelanitissa	Auto Diesel
Kelanitissa CCY	Naphtha or Diesel
Lakvijaya 1	Coal
Lakvijaya 2	Coal
Lakvijaya 3	Coal
Uthuru Janani	Heavy Fuel
Barge CEB	Heavy Fuel
KCCPS -2	Auto Diesel

Power Station	Primary Fuel
Private Thermal	
West Coast	Auto Diesel / Heavy Fuel
ACE Matara	Heavy Fuel

Major Incidents reported during the day

August 29, 2023

- 1) Samanalawewa full load generation restricted, in order to comply with the operation constraints initiated by propagation of air bubbles at reservoir intake, which would further course for the possible formation of vortex at the same place, due to the severe depletion of Samanalawewa reservoir storage.
- 2) Chillaw – New Chillaw 132kV cct 01 tripped from both ends at 05:02hrs due to the operation of differential protection. The cct was restored at 14:40hrs.