

Generation and Reservoirs Statistics

September 28, 2023



PUBLIC UTILITIES COMMISSION OF SRI LANKA

1. Daily Generation Mix in MWh

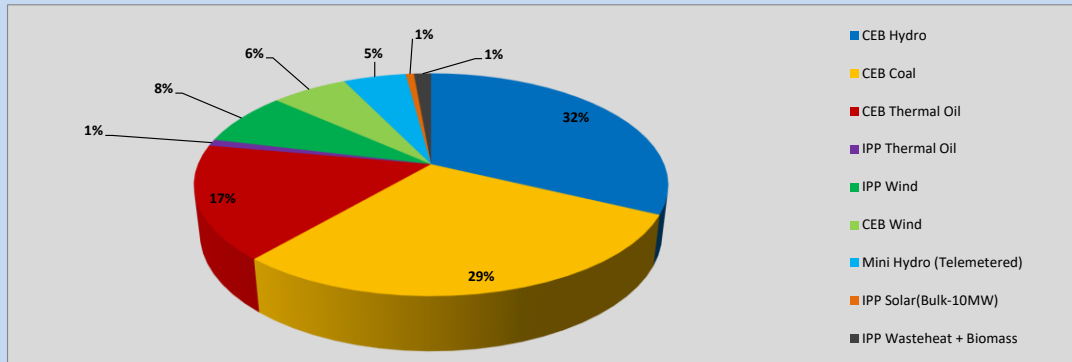


Table 01

	Generation (MWh)
CEB Hydro	10,772
CEB Coal	9,786
CEB Thermal Oil	5,546
IPP Thermal Oil	321
IPP Wind	2,613
CEB Wind	2,083
Mini Hydro (Telemetered)	1,720
IPP Solar (Bulk)	222
IPP Waste heat + Biomass	470
Total Generation (Excluding estimated figures)	33,533
* Estimated unserved energy	0
* Estimated Mini Hydro (Non telemetered)	1920
* Estimated IPP Solar PV (Bulk 1-10MW)	304
* Estimated Solar Roof Top PV	1660
Total Generation (Including estimated figures)	37,417

* Estimated figures of CEB generation report

Table 02

	Installed Capacity (MW)
CEB Hydro	1409
CEB Coal	810
CEB Thermal Oil	781
IPP Thermal Oil (West Coast, ACE Matara and ACE Embilipitiya)	387
IPP Wind	148
CEB Wind	100
Mini Hydro	416
IPP Waste heat + Biomass	50
IPP Solar	130
Rooftop Solar* (Ordinary)	267
Rooftop Solar* (LT Bulk)	256
Rooftop Solar* (HT Bulk)	61

Data Source - Monthly Review Report [May-2023]

2. Cumulative Dispatch

Following data excludes the contribution from roof top solar, non telemetered solar and mini hydro plants

Table 03 - Current Month

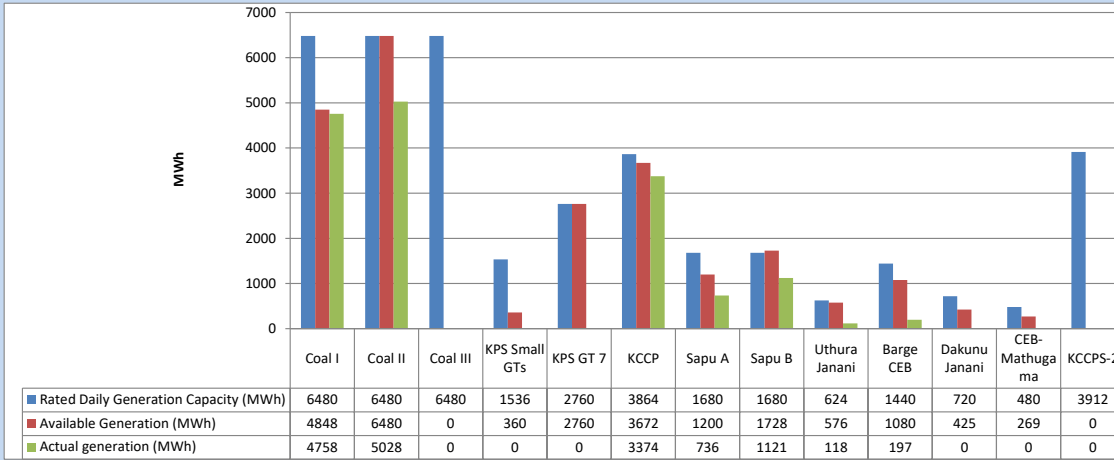
Category	Dispatch (GWh)	
CEB Hydro	245	23.51%
CEB Coal	315	30.23%
CEB Thermal Oil	203	19.50%
IPP Thermal	104	9.97%
SPP Wind	60	5.78%
CEB Wind	58	5.59%
Mini Hydro (Telemetered)	38	3.62%
IPP Solar(Bulk-10MW)	8	0.74%
IPP Waste heat + BMP	11	1.07%
Total	1,042	

Table 04 - Current Year

Category	Dispatch (GWh)	
CEB Hydro	2,544	24.22%
CEB Coal	3,900	37.13%
CEB Thermal Oil	1,889	17.98%
IPP Thermal	1,094	10.42%
SPP Wind	321	3.05%
CEB Wind	327	3.12%
Mini Hydro (Telemetered)	248	2.36%
IPP Solar(Bulk-10MW)	82	0.78%
IPP Waste heat	99	0.94%
Total	10,503	

3. CEB owned Thermal Plant Dispatch

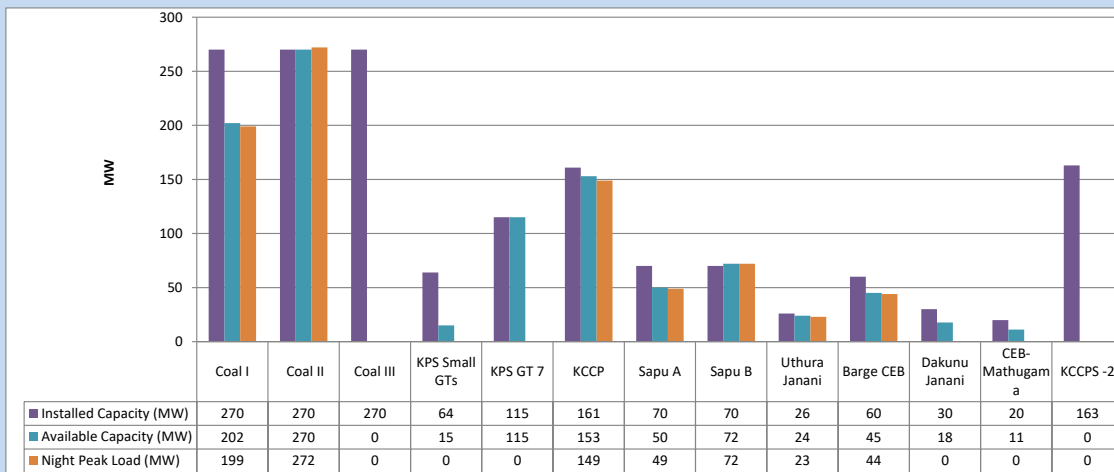
September 28, 2023



Available Generation is estimated based on plant availability at 6.00am on

September 29, 2023

4. CEB owned Thermal Plant Loading at the Night Peak

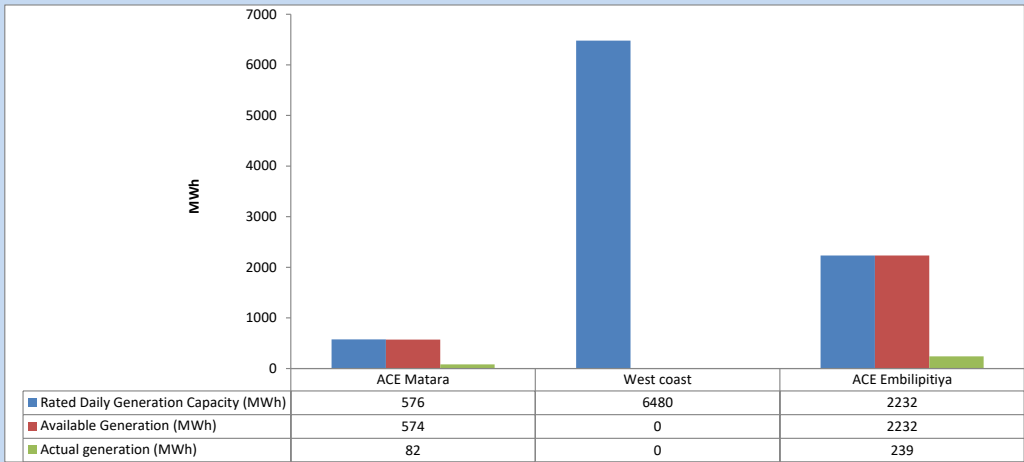


Plant availability is recorded at 6.00 am on

September 29, 2023

5. IPP owned Thermal Plant Dispatch

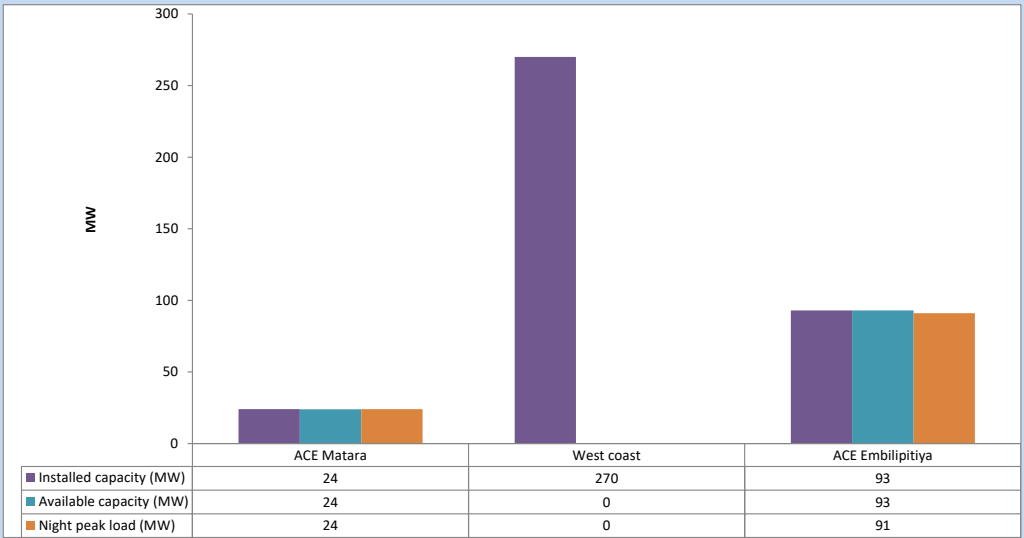
September 28, 2023



Available Generation is estimated based on plant availability at 6.00am on

September 29, 2023

6. IPP owned Thermal Plant Loading at the Night Peak

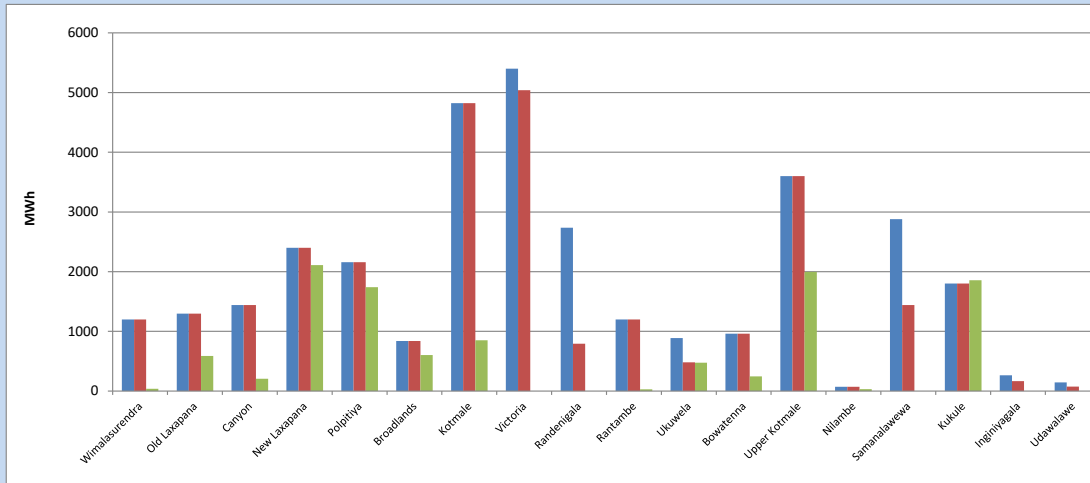


Plant availability is recorded at 6.00 am on

September 29, 2023

7. Major Hydro Plant Dispatch

September 28, 2023

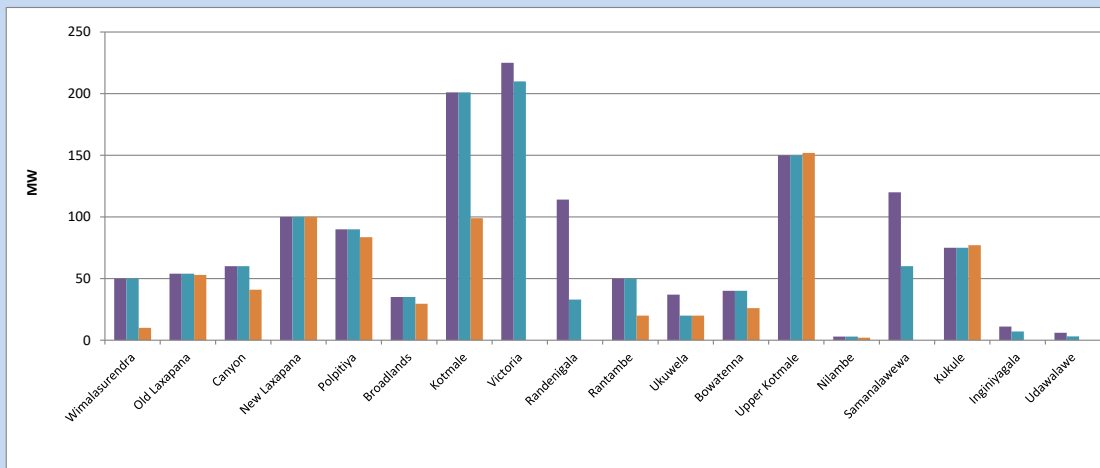


Available Generation is estimated based on plant availability at 6.00am on September 29, 2023
Broadlands power plant is operating in the Commissioning Stage

September 29, 2023

8. Major Hydro Plant Loading at Night Peak

September 28, 2023



Plant availability is recorded at 6.00 am on September 29, 2023
Broadlands power plant is operating in the Commissioning Stage

9. Summary of Major Plant performance

Table 05

Plant	Installed Capacity	Plant Availability	Night peak Load	Plant Dispatch
	(MW)	(MW)	(MW)	(MWh)
Wimalasurendra	50	50	10	39
Old Laxapana Canyon	54	54	53	588
New Laxapana	60	60	41	207
Polpitiya	100	100	100	2,111
Broadlands	90	90	84	1,740
Kotmale	35	35	30	602
Kotmale	201	201	99	850
Victoria	225	210	0	0
Randenigala	114	33	0	0
Rantambe	50	50	20	30
Ukuwela	37	20	20	475
Bowatenna	40	40	26	247
Upper Kotmale	150	150	152	1,996
Nilambe	3	3	2	31
Samanalawewa	120	60	0	0
Kukule	75	75	77	1,856
Inginiyagala	11	7	0	0
Udawalawe	6	3	0	0
Puttalam Coal I	270	202	199	4,758
Puttalam Coal II	270	270	272	5,028
Puttalam Coal III	270	0	0	0
KPS Small GTs	64	15	0	0
KPS GT 7	115	115	0	0
KCCP	161	153	149	3,374
Sapugaskanda A	70	50	49	736
Sapugaskanda B	70	72	72	1,121
Uthura Janani	26	24	23	118
Barge CEB	60	45	44	197
CEB-Hambantota	30	18	0	0
CEB-Mathugama	20	11	0	0
ACE Matara	24	24	24	82
Asia Power	50	0	0	0
KCCPS -2	163	0	0	0
West Coast	270	0	0	0
Nothern Power	36	0	0	0
ACE Embilipitiya	93	93	91	239
Total	3,483	2,333	1,856	33,533

Plant availability is the availability recorded at 6 am on

September 29, 2023

10. Contribution to the Night Peak in MW

September 28, 2023

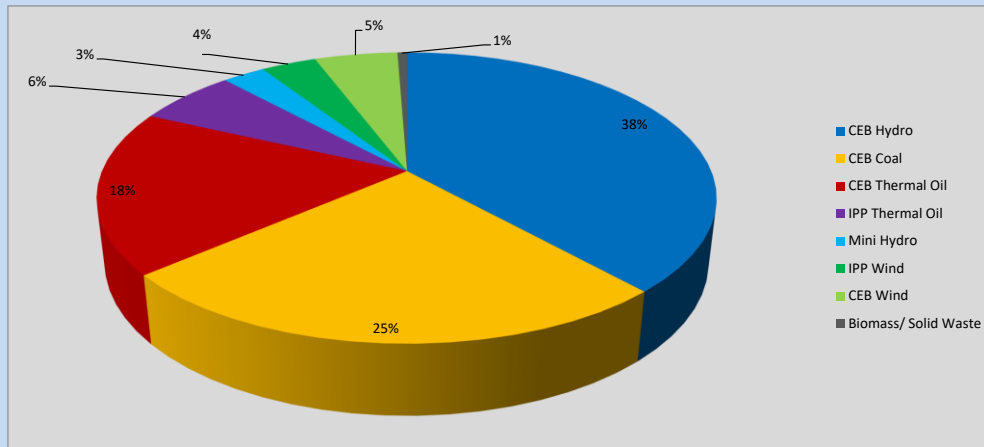


Table 06

CEB Hydro	708	MW
CEB Coal	471	MW
CEB Thermal Oil	337	MW
IPP Thermal Oil	115	MW
Mini Hydro (Telemetered)	49	MW
IPP Wind	63.8	MW
CEB Wind	95.8	MW
Biomass/ Solid Waste	11	MW

Recorded Peak Demand Data

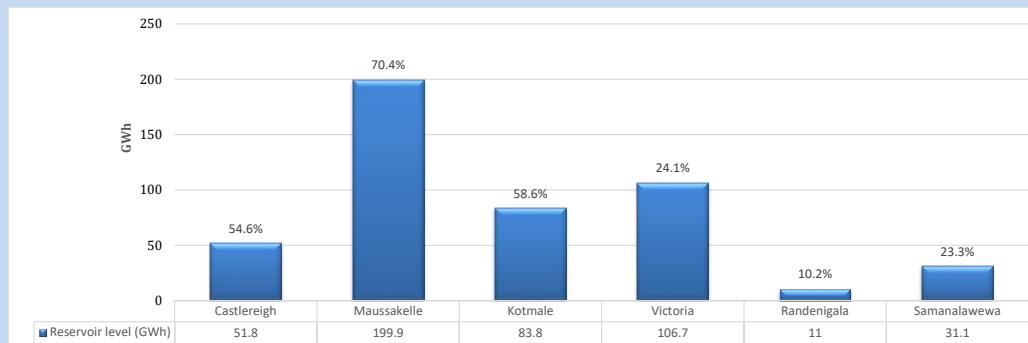
Table 07

Night Peak*	1,851	MW
Day Peak Maximum Demand	1,370	MW
Day Peak Minimum Demand	1,225	MW
Off Peak Minimum Demand	1,093	MW

Above figures are excluding contribution from roof top solar, non telemetered solar and mini hydro plants

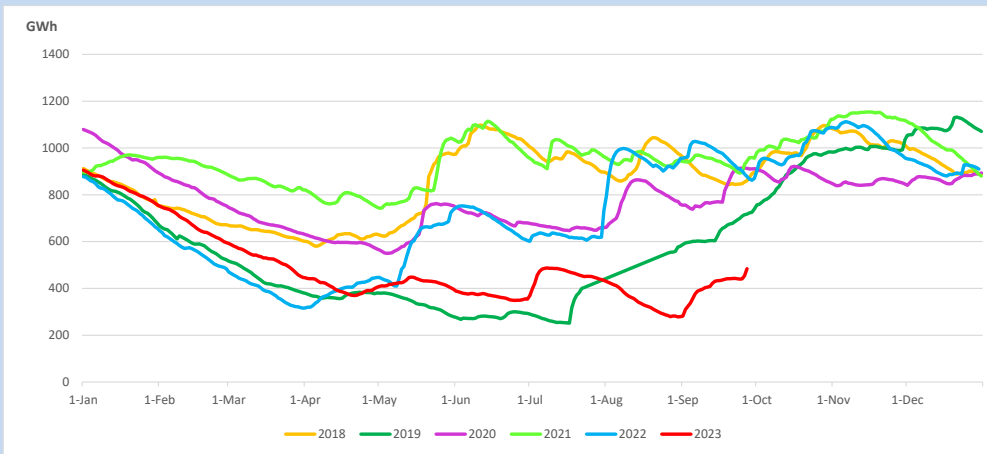
Reservoir Levels -

as at 06.00 Hr on September 29, 2023

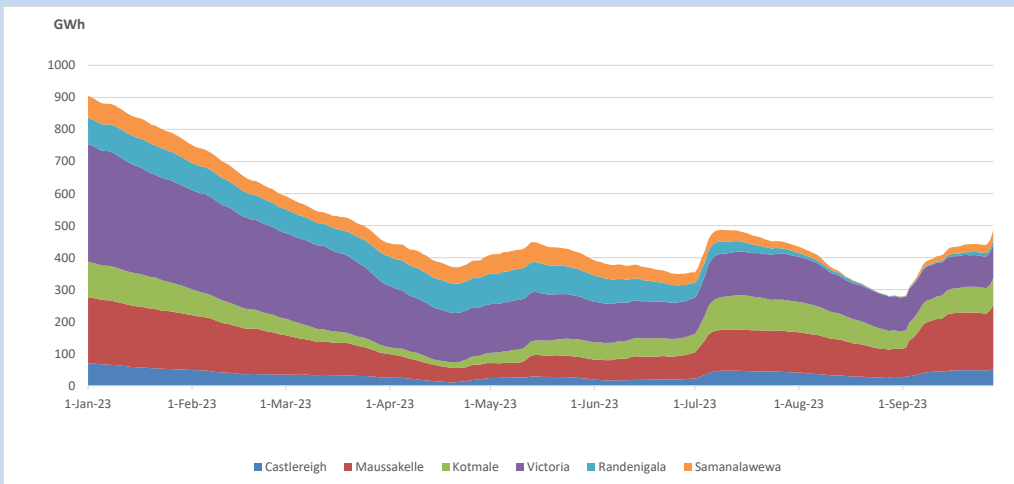


Total Reservoir Level 484.3 GWh
 % of Total capacity 40.2%

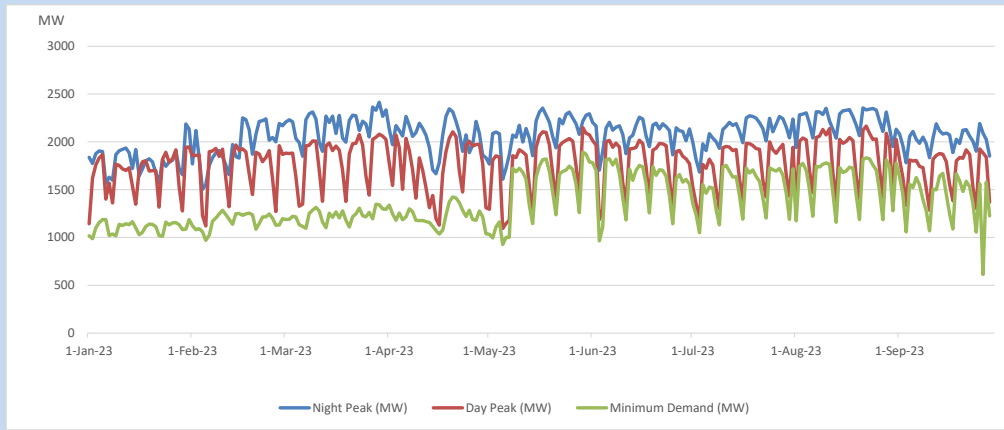
11. Comparison of Total Reservoir Storage Levels with Past Years



12. Variation of Major Hydro Reservoir Levels in the current year (GWh)



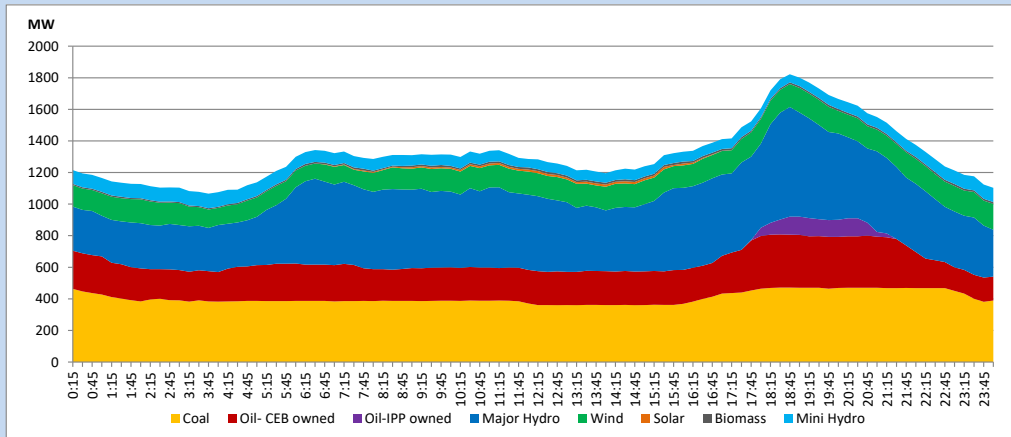
13. Variation of Demand during the current year



The above figures are excluding contribution from roof top solar, non telemetered solar and mini hydro plants

14. Daily Load Curve

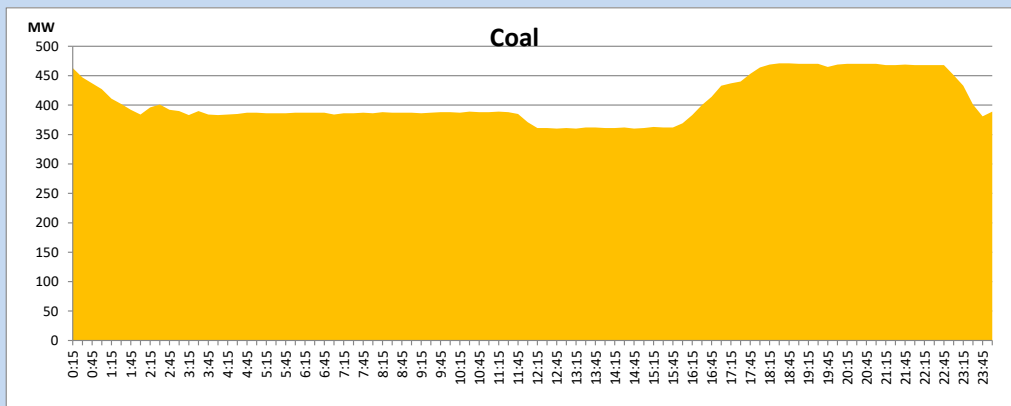
September 28, 2023



Solar and wind data is based on Telemetered Power Stations only

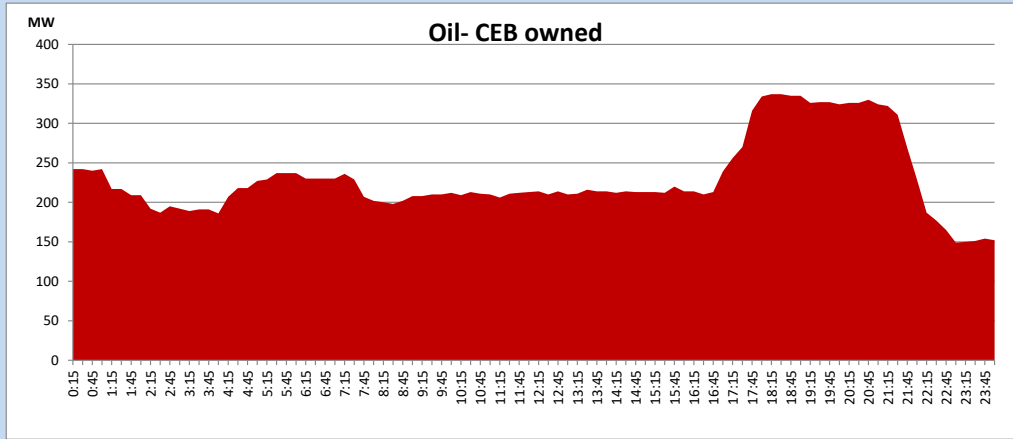
Coal Generation during

September 28, 2023



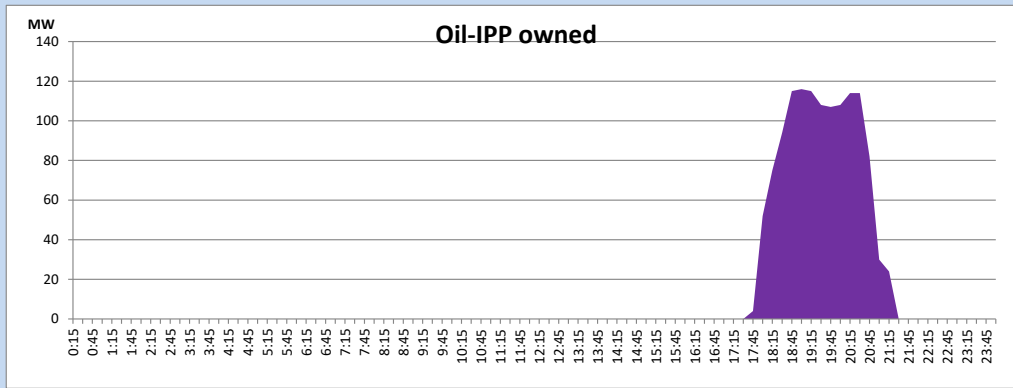
CEB Oil Plant Generation during

September 28, 2023



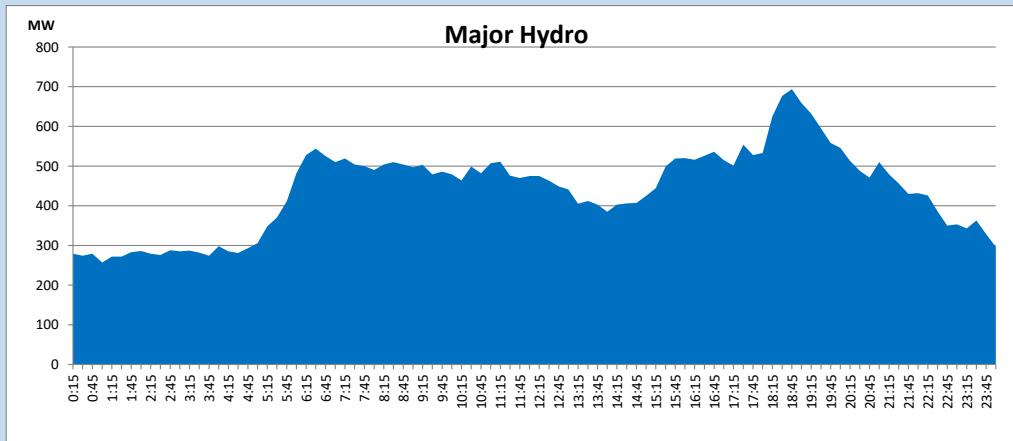
IPP Oil Plant Generation during

September 28, 2023



Major Hydro Generation during

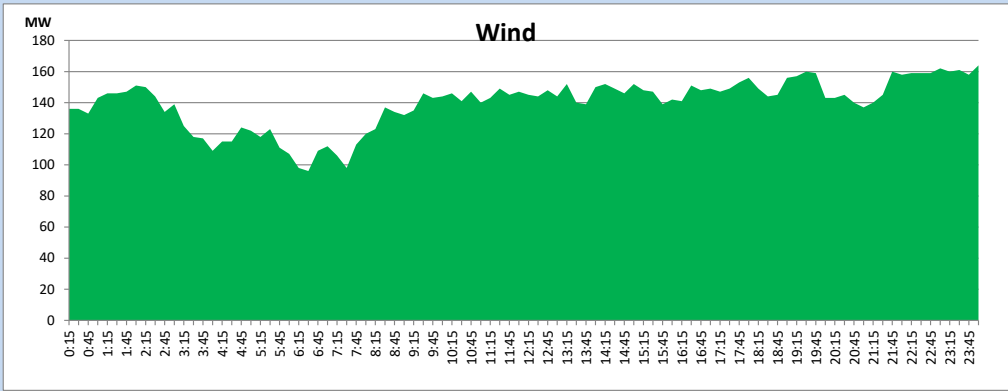
September 28, 2023



Wind Generation during

September 28, 2023

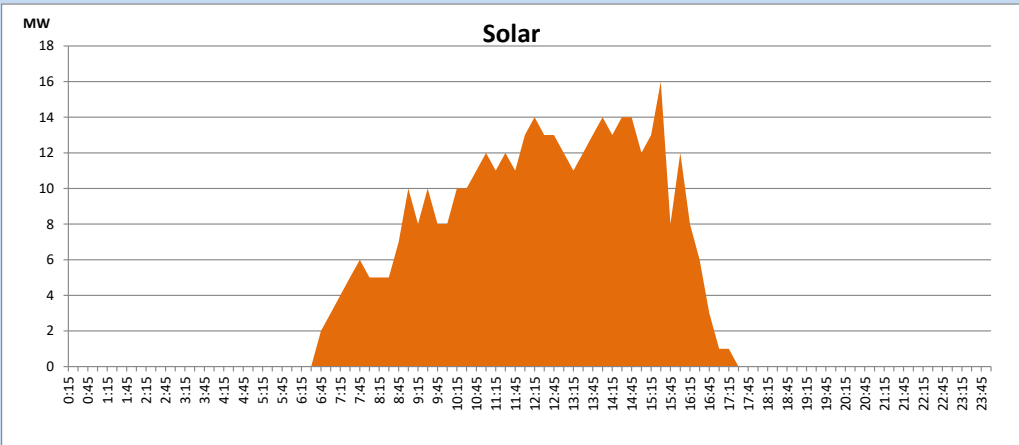
Based on Telemetered Power Stations only



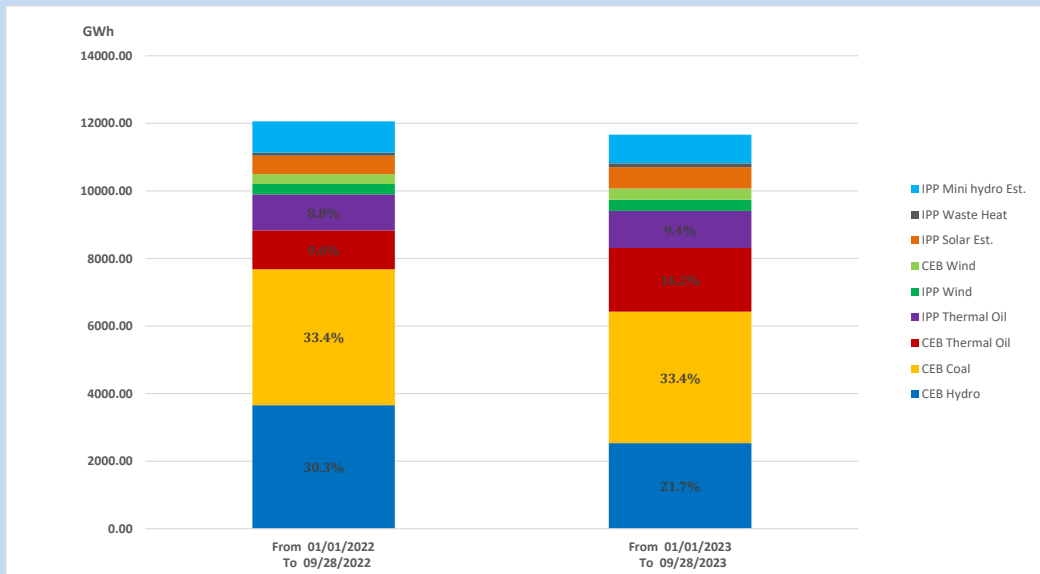
Solar Generation during

September 28, 2023

Based on Telemetered Power Stations only



15. Cumulative Dispatch Comparison with Last Year



Cumulative dispatch

From 01/01/2022 To 09/28/2022

12060 GWh

From 01/01/2023 To 09/28/2023

11663 GWh

The above figures are including contribution from roof top solar, non telemetered solar and mini hydro plants (figures have been adjusted based on the data from the CEB monthly review reports.)

Thermal Plant Fuel types

Table 08

Power Station	Primary Fuel
CEB Thermal	
Sapugaskanda 1	Heavy Fuel
Sapugaskanda 2	Heavy Fuel
Kelanitissa Small Gas Turbines	Auto Diesel
GT 7 - Kelanitissa	Auto Diesel
Kelanitissa CCY	Naphtha or Diesel
Lakvijaya 1	Coal
Lakvijaya 2	Coal
Lakvijaya 3	Coal
Uthuru Janani	Heavy Fuel
Barge CEB	Heavy Fuel
KCCPS -2	Auto Diesel

Power Station	Primary Fuel
Private Thermal	
West Coast	Auto Diesel / Heavy Fuel
ACE Matara	Heavy Fuel
ACE Embilipitiya	Heavy Fuel

Major Incidents reported during the day

September 28, 2023

- 1) Kukule spilling continues to present hour.
- 2) Kotugoda 220/132/33kV T/F 01 tripped only from 132kV side at 9:23hrs without showing any indications. The T/F was normalized at 11:52hrs.