

Generation and Reservoirs Statistics

August 28, 2023



PUBLIC UTILITIES COMMISSION OF SRI LANKA

1. Daily Generation Mix in MWh

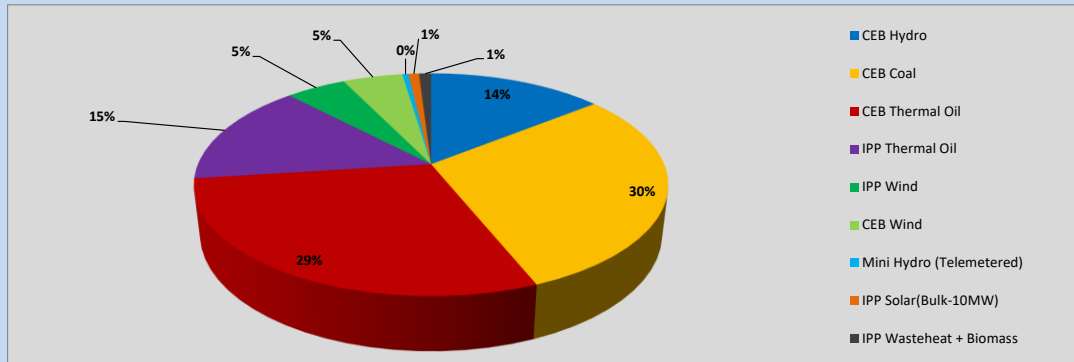


Table 01

	Generation (MWh)
CEB Hydro	6,259
CEB Coal	12,989
CEB Thermal Oil	12,750
IPP Thermal Oil	6,540
IPP Wind	2,151
CEB Wind	2,142
Mini Hydro (Telemetered)	213
IPP Solar (Bulk)	384
IPP Waste heat + Biomass	431
Total Generation (Excluding estimated figures)	43,859
* Estimated unserved energy	0
* Estimated Mini Hydro (Non telemetered)	3557
* Estimated IPP Solar PV (Bulk 1-10MW)	304
* Estimated Solar Roof Top PV	1650
Total Generation (Including estimated figures)	49,370

* Estimated figures of CEB generation report

Table 02

	Installed Capacity (MW)
CEB Hydro	1409
CEB Coal	810
CEB Thermal Oil	781
IPP Thermal Oil (West Coast, ACE Matara)	294
IPP Wind	148
CEB Wind	100
Mini Hydro	416
IPP Waste heat + Biomass	50
IPP Solar	130
Rooftop Solar* (Ordinary)	267
Rooftop Solar* (LT Bulk)	256
Rooftop Solar* (HT Bulk)	61

Data Source - Monthly Review Report [May-2023]

2. Cumulative Dispatch

Following data excludes the contribution from roof top solar, non telemetered solar and mini hydro plants

Table 03 - Current Month

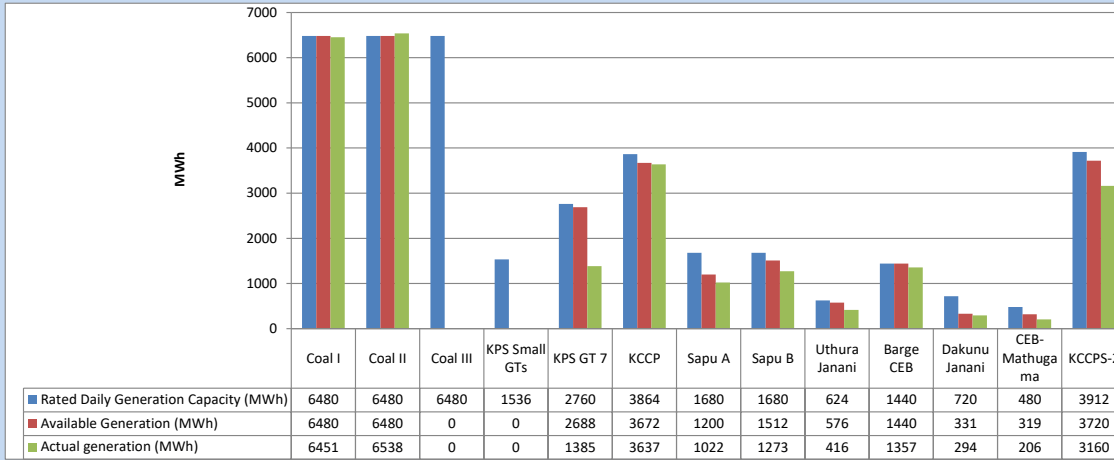
Category	Dispatch (GWh)	
CEB Hydro	235	19.99%
CEB Coal	296	25.20%
CEB Thermal Oil	351	29.94%
IPP Thermal	167	14.22%
SPP Wind	45	3.83%
CEB Wind	48	4.12%
Mini Hydro (Telemetered)	8	0.66%
IPP Solar(Bulk-10MW)	10	0.88%
IPP Waste heat + BMP	14	1.16%
Total	1,173	

Table 04 - Current Year

Category	Dispatch (GWh)	
CEB Hydro	2,281	24.42%
CEB Coal	3,546	37.96%
CEB Thermal Oil	1,655	17.72%
IPP Thermal	971	10.39%
SPP Wind	255	2.73%
CEB Wind	265	2.84%
Mini Hydro (Telemetered)	209	2.24%
IPP Solar(Bulk-10MW)	73	0.79%
IPP Waste heat	86	0.92%
Total	9,341	

3. CEB owned Thermal Plant Dispatch

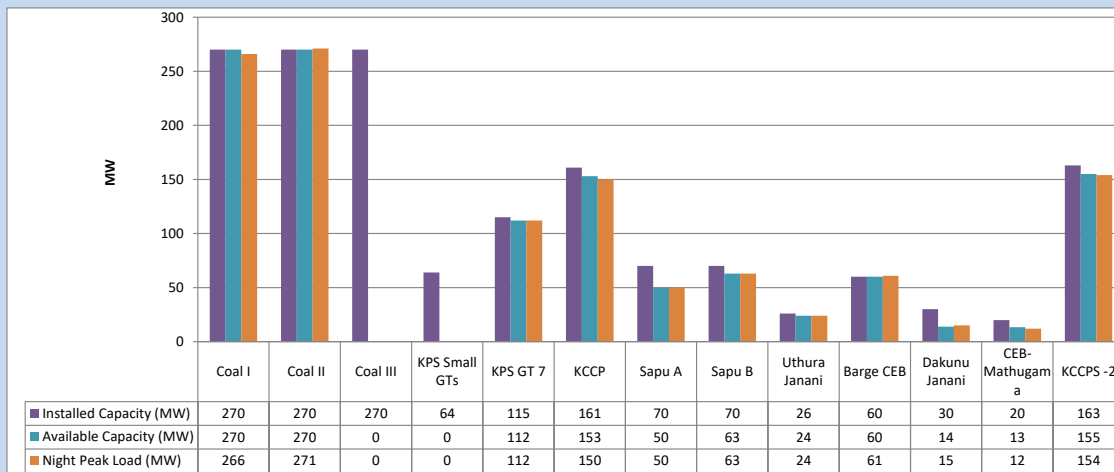
August 28, 2023



Available Generation is estimated based on plant availability at 6.00am on

August 29, 2023

4. CEB owned Thermal Plant Loading at the Night Peak

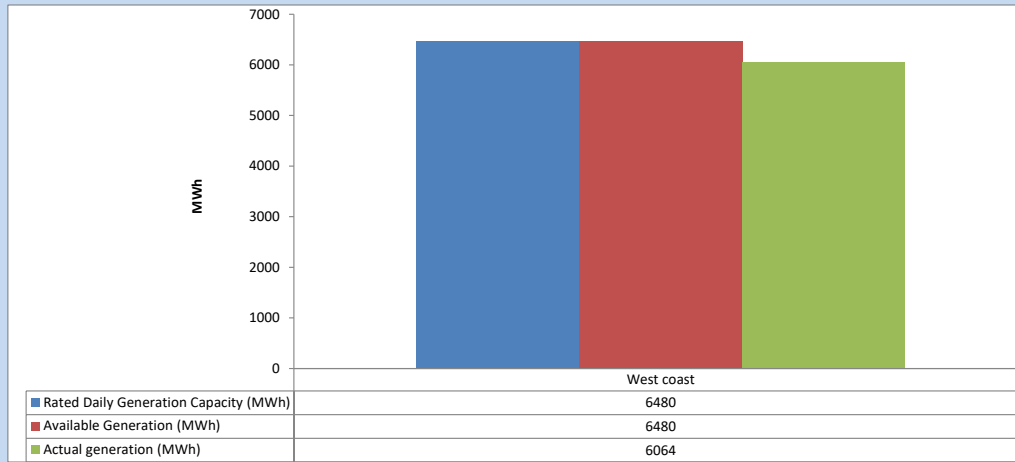


Plant availability is recorded at 6.00 am on

August 29, 2023

5. IPP owned Thermal Plant Dispatch

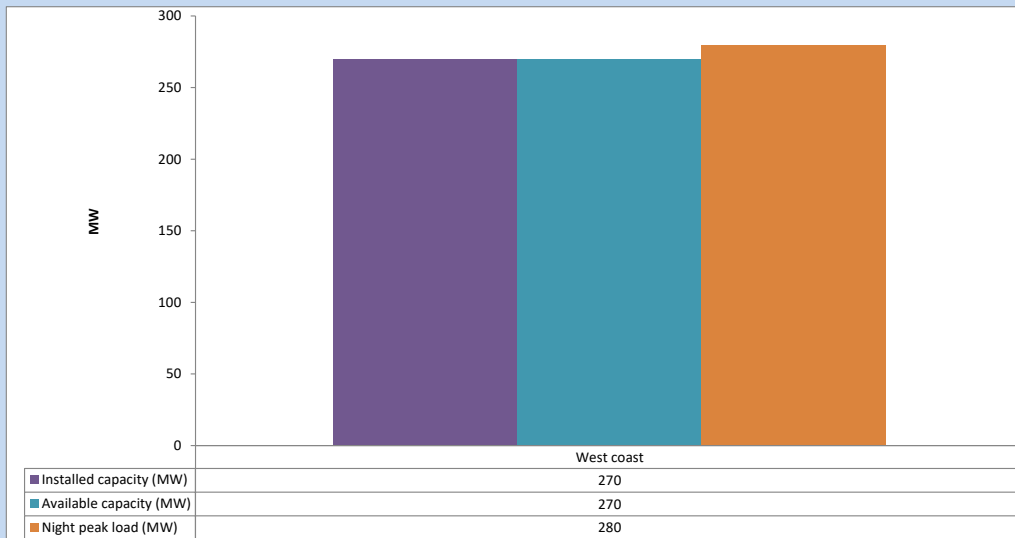
August 28, 2023



Available Generation is estimated based on plant availability at 6.00am on

August 29, 2023

6. IPP owned Thermal Plant Loading at the Night Peak

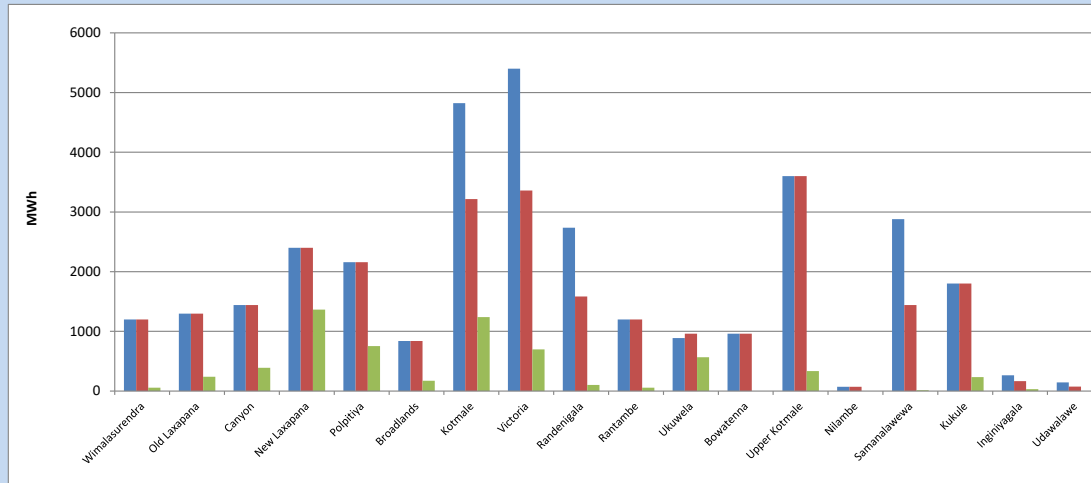


Plant availability is recorded at 6.00 am on

August 29, 2023

7. Major Hydro Plant Dispatch

August 28, 2023

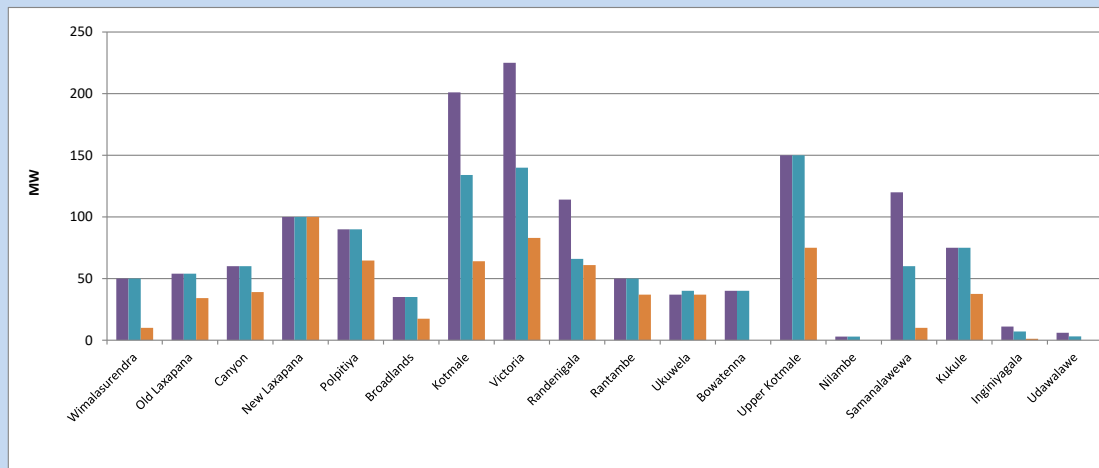


Available Generation is estimated based on plant availability at 6.00am on August 29, 2023
Broadlands power plant is operating in the Commissioning Stage

August 29, 2023

8. Major Hydro Plant Loading at Night Peak

August 28, 2023



Plant availability is recorded at 6.00 am on August 29, 2023
Broadlands power plant is operating in the Commissioning Stage

August 29, 2023

9. Summary of Major Plant performance

Table 05

Plant	Installed Capacity (MW)	Plant Availability (MW)	Night peak Load (MW)	Plant Dispatch (MWh)
Wimalasurendra	50	50	10	58
Old Laxapana	54	54	34	239
Canyon	60	60	39	390
New Laxapana	100	100	100	1,364
Polpitiya	90	90	65	753
Broadlands	35	35	17	173
Kotmale	201	134	64	1,240
Victoria	225	140	83	699
Randenigala	114	66	61	103
Rantambe	50	50	37	58
Ukuwela	37	40	37	567
Bowatenna	40	40	0	0
Upper Kotmale	150	150	75	335
Nilambe	3	3	0	0
Samanalawewa	120	60	10	14
Kukule	75	75	38	234
Inginiyagala	11	7	1	32
Udawalawe	6	3	0	0
Puttalam Coal I	270	270	266	6,451
Puttalam Coal II	270	270	271	6,538
Puttalam Coal III	270	0	0	0
KPS Small GTs	64	0	0	0
KPS GT 7	115	112	112	1,385
KCCP	161	153	150	3,637
Sapugaskanda A	70	50	50	1,022
Sapugaskanda B	70	63	63	1,273
Uthura Janani	26	24	24	416
Barge CEB	60	60	61	1,357
CEB-Hambantota	30	14	15	294
CEB-Mathugama	20	13	12	206
ACE Matara	24	24	24	476
Asia Power	50	0	0	0
KCCPS -2	163	155	154	3,160
West Coast	270	270	280	6,064
Nothern Power	36	0	0	0
ACE Embilipitiya	93	0	0	0
Total	3,483	2,635	2,334	43,859

Plant availability is the availability recorded at 6 am on

August 29, 2023

10. Contribution to the Night Peak in MW

August 28, 2023

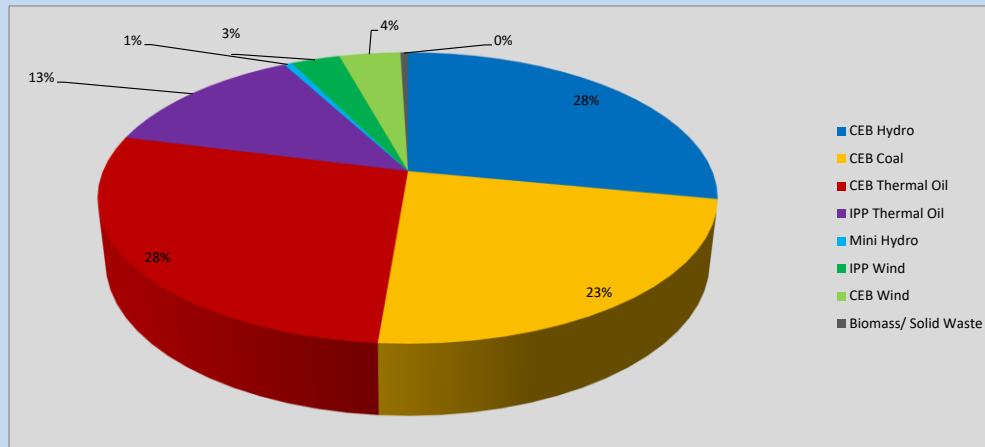


Table 06

CEB Hydro	649	MW
CEB Coal	537	MW
CEB Thermal Oil	641	MW
IPP Thermal Oil	304	MW
Mini Hydro (Telemetered)	12	MW
IPP Wind	70.8	MW
CEB Wind	88.1	MW
Biomass/ Solid Waste	11	MW

Recorded Peak Demand Data

Table 07

Night Peak*	2,312	MW
Day Peak Maximum Demand	2,090	MW
Day Peak Minimum Demand	1,812	MW
Off Peak Minimum Demand	1,317	MW

Above figures are excluding contribution from roof top solar, non telemetered solar and mini hydro plants

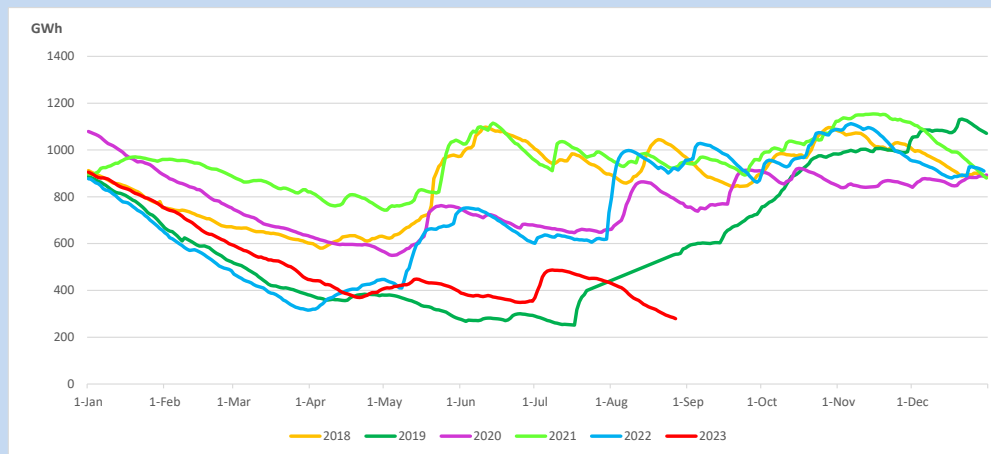
Reservoir Levels -

as at 06.00 Hr on August 29, 2023

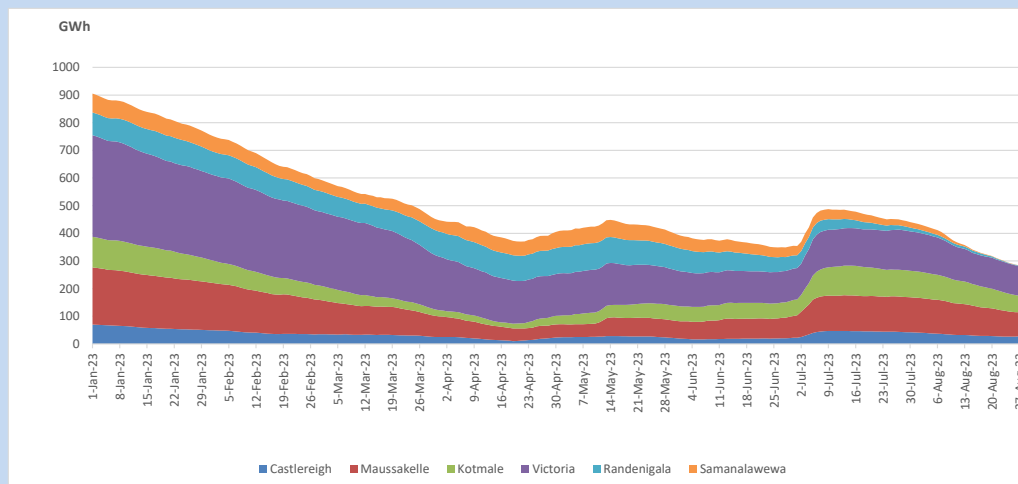


Total Reservoir Level 279.3 GWh
% of Total capacity 23.2%

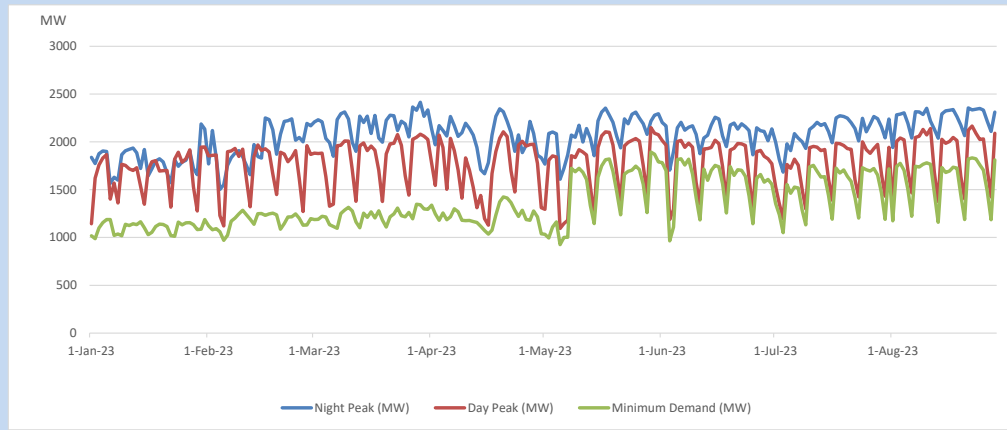
11. Comparison of Total Reservoir Storage Levels with Past Years



12. Variation of Major Hydro Reservoir Levels in the current year (GWh)



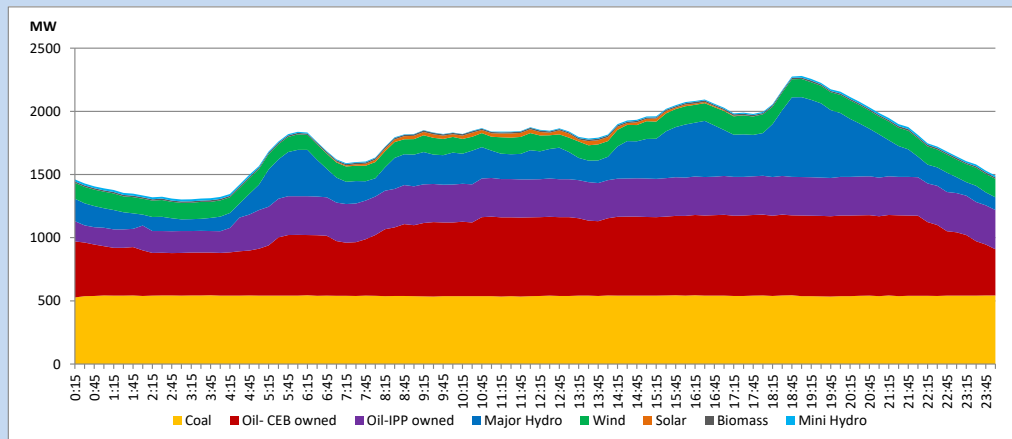
13. Variation of Demand during the current year



The above figures are excluding contribution from roof top solar, non telemetered solar and mini hydro plants

14. Daily Load Curve

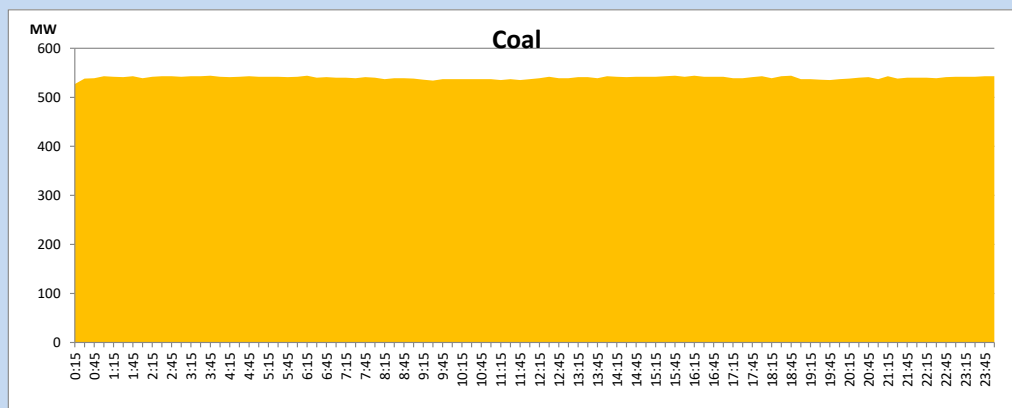
August 28, 2023



Solar and wind data is based on Telemetered Power Stations only

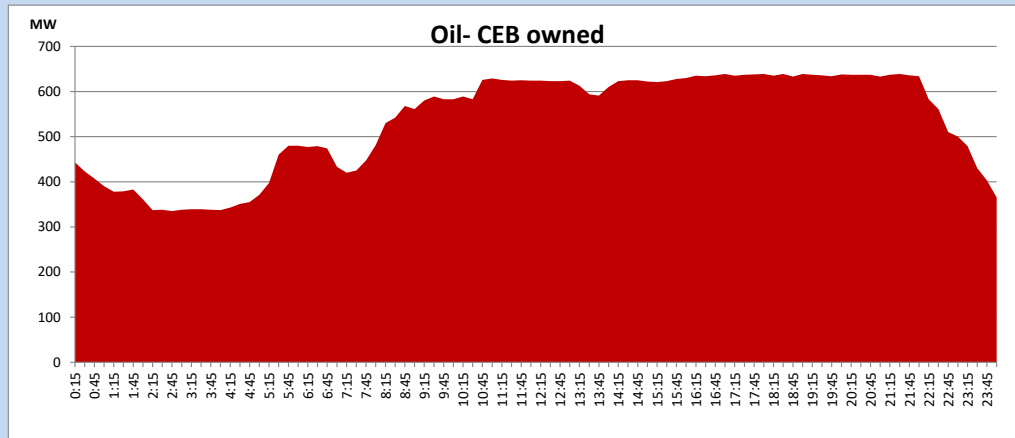
Coal Generation during

August 28, 2023



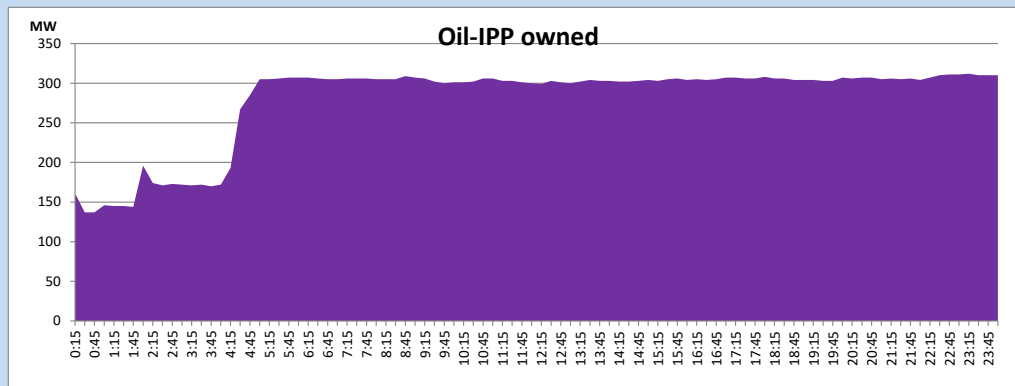
CEB Oil Plant Generation during

August 28, 2023



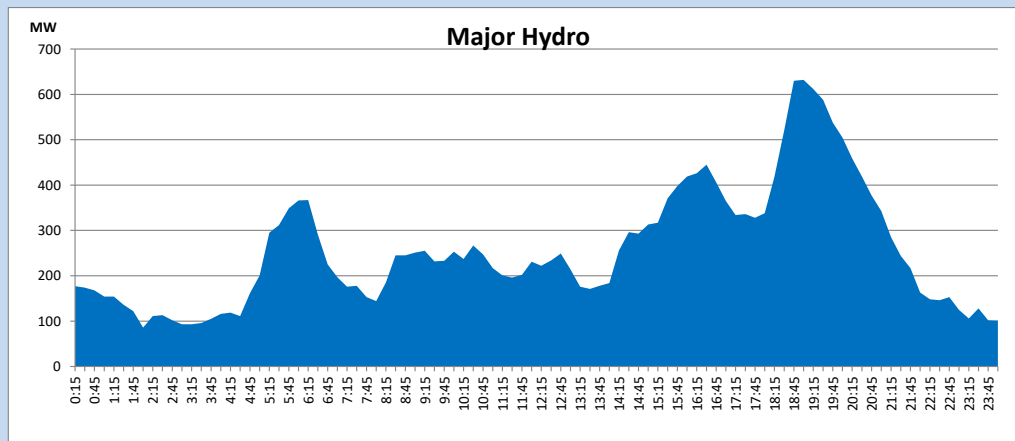
IPP Oil Plant Generation during

August 28, 2023



Major Hydro Generation during

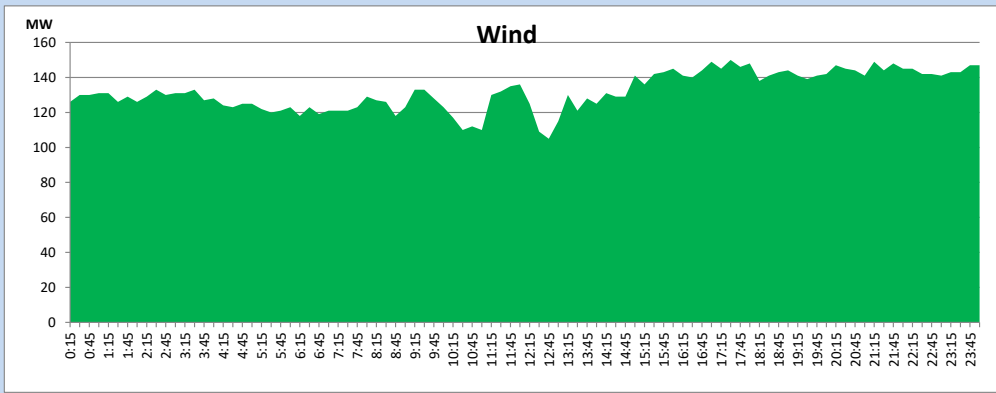
August 28, 2023



Wind Generation during

August 28, 2023

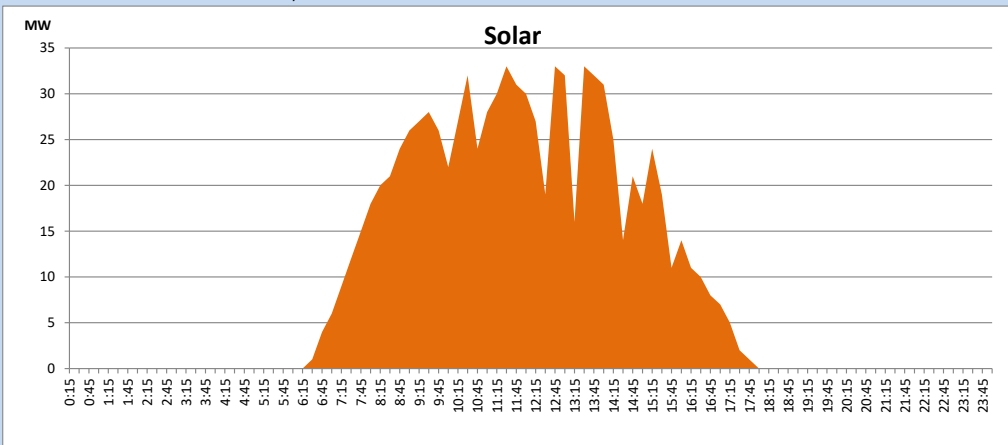
Based on Telemetered Power Stations only



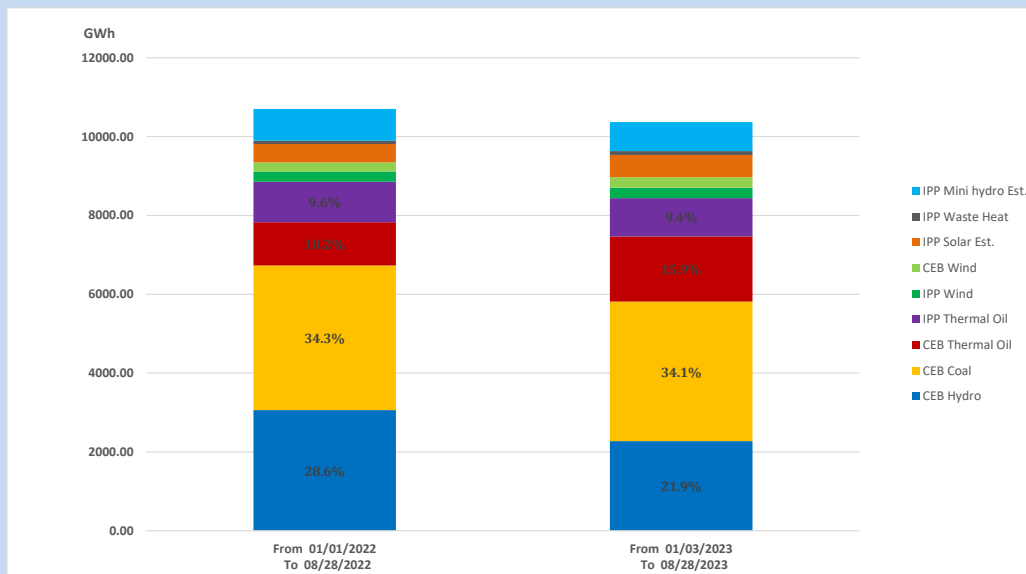
Solar Generation during

August 28, 2023

Based on Telemetered Power Stations only



15. Cumulative Dispatch Comparison with Last Year



Cumulative dispatch
 From 01/01/2022 To 08/28/2022
 From 01/01/2023 To 08/28/2023

10702 GWh
 10370 GWh

The above figures are including contribution from roof top solar, non telemetered solar and mini hydro plants (figures have been adjusted based on the data from the CEB monthly review reports.)

Thermal Plant Fuel types

Table 08

Power Station	Primary Fuel
CEB Thermal	
Sapugaskanda 1	Heavy Fuel
Sapugaskanda 2	Heavy Fuel
Kelanitissa Small Gas Turbines	Auto Diesel
GT 7 - Kelanitissa	Auto Diesel
Kelanitissa CCY	Naphtha or Diesel
Lakvijaya 1	Coal
Lakvijaya 2	Coal
Lakvijaya 3	Coal
Uthuru Janani	Heavy Fuel
Barge CEB	Heavy Fuel
KCCPS -2	Auto Diesel

Power Station	Primary Fuel
Private Thermal	
West Coast	Auto Diesel / Heavy Fuel
ACE Matara	Heavy Fuel

Major Incidents reported during the day

August 28, 2023

- 1) Samanalawewa full load generation restricted, in order to comply with the operation constraints initiated by propagation of air bubbles at reservoir intake, which would further course for the possible formation of vortex at the same place, due to the severe depletion of Samanalawewa reservoir storage.
- 2) Chilaw - New Chillaw 132kV cct 01 tripped from both ends at 05:02hrs(29.08.2023) due to the operation of differential protection. The cct is yet to be normalized.