

# Generation and Reservoirs Statistics

September 27, 2023



**PUBLIC UTILITIES COMMISSION OF SRI LANKA**

## 1. Daily Generation Mix in MWh

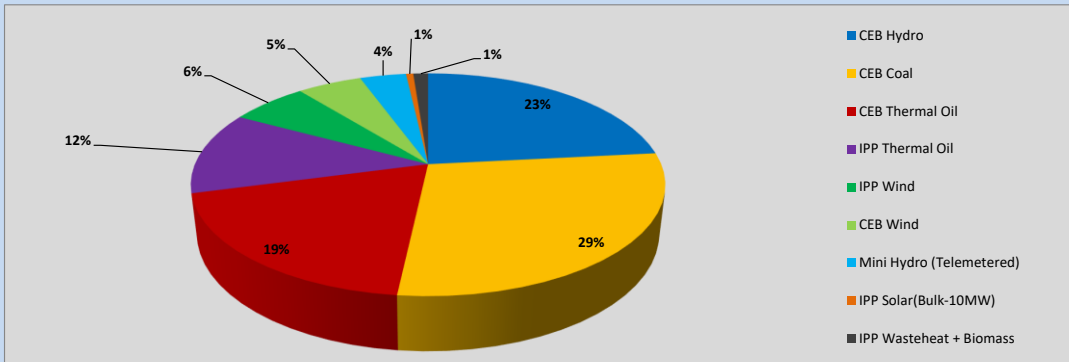


Table 01

	Generation (MWh)
CEB Hydro	9,282
CEB Coal	11,284
CEB Thermal Oil	7,599
IPP Thermal Oil	4,783
IPP Wind	2,501
CEB Wind	2,091
Mini Hydro (Telemetered)	1,498
IPP Solar (Bulk)	236
IPP Waste heat + Biomass	480
<b>Total Generation (Excluding estimated figures)</b>	<b>39,754</b>
* Estimated unserved energy	0
* Estimated Mini Hydro (Non telemetered)	2142
* Estimated IPP Solar PV (Bulk 1-10MW)	304
* Estimated Solar Roof Top PV	1660
<b>Total Generation (Including estimated figures)</b>	<b>43,860</b>

\* Estimated figures of CEB generation report

Table 02

	Installed Capacity (MW)
CEB Hydro	1409
CEB Coal	810
CEB Thermal Oil	781
IPP Thermal Oil (West Coast, ACE Matara and ACE Embilipitiya)	387
IPP Wind	148
CEB Wind	100
Mini Hydro	416
IPP Waste heat + Biomass	50
IPP Solar	130
Rooftop Solar* (Ordinary)	267
Rooftop Solar* (LT Bulk)	256
Rooftop Solar* (HT Bulk)	61

Data Source - Monthly Review Report [May-2023]

## 2. Cumulative Dispatch

Following data excludes the contribution from roof top solar, non telemetered solar and mini hydro plants

Table 03 - Current Month

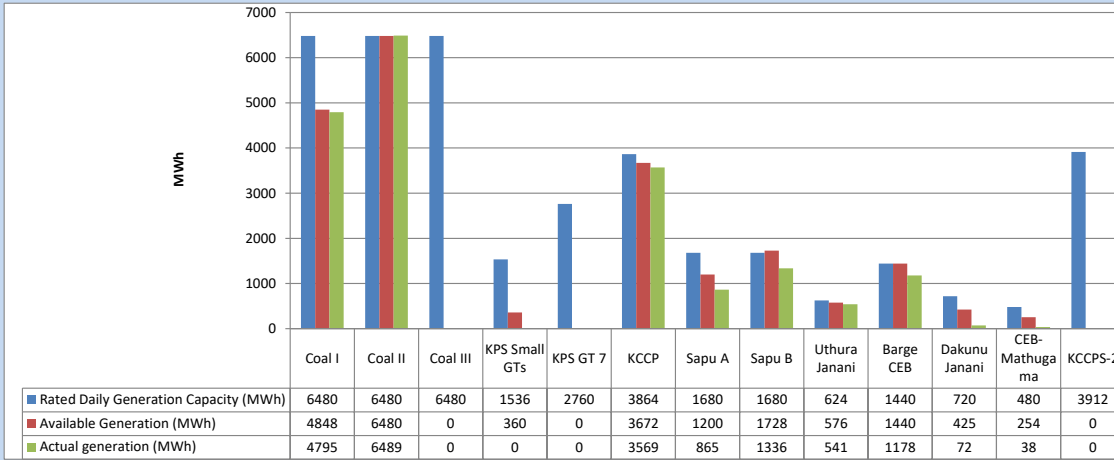
Category	Dispatch (GWh)	
CEB Hydro	234	23.22%
CEB Coal	305	30.26%
CEB Thermal Oil	198	19.60%
IPP Thermal	104	10.27%
SPP Wind	58	5.71%
CEB Wind	56	5.57%
Mini Hydro (Telemetered)	36	3.57%
IPP Solar(Bulk-10MW)	7	0.74%
IPP Waste heat + BMP	11	1.06%
<b>Total</b>	<b>1,009</b>	

Table 04 - Current Year

Category	Dispatch (GWh)	
CEB Hydro	2,533	24.20%
CEB Coal	3,890	37.16%
CEB Thermal Oil	1,883	17.99%
IPP Thermal	1,094	10.45%
SPP Wind	318	3.04%
CEB Wind	325	3.11%
Mini Hydro (Telemetered)	246	2.35%
IPP Solar(Bulk-10MW)	82	0.78%
IPP Waste heat	98	0.94%
<b>Total</b>	<b>10,469</b>	

### 3. CEB owned Thermal Plant Dispatch

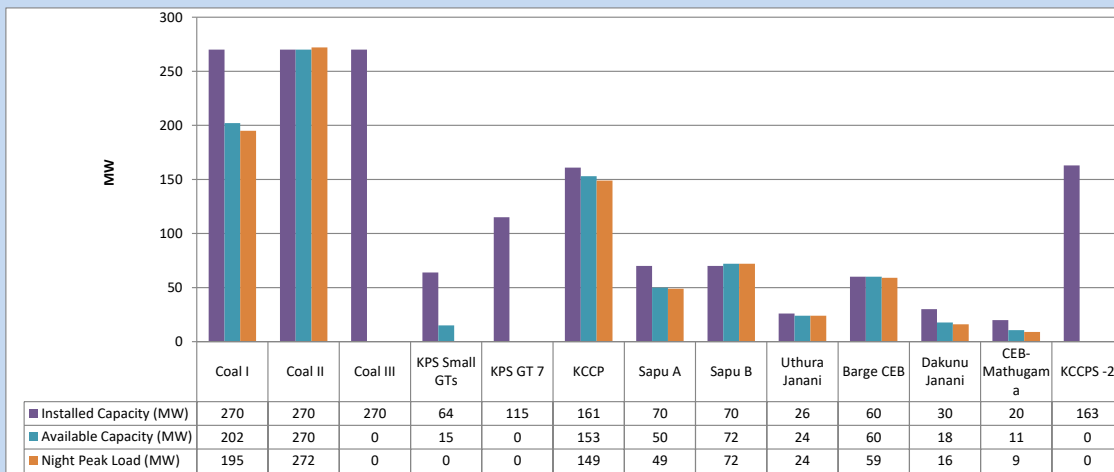
September 27, 2023



Available Generation is estimated based on plant availability at 6.00am on

September 28, 2023

### 4. CEB owned Thermal Plant Loading at the Night Peak

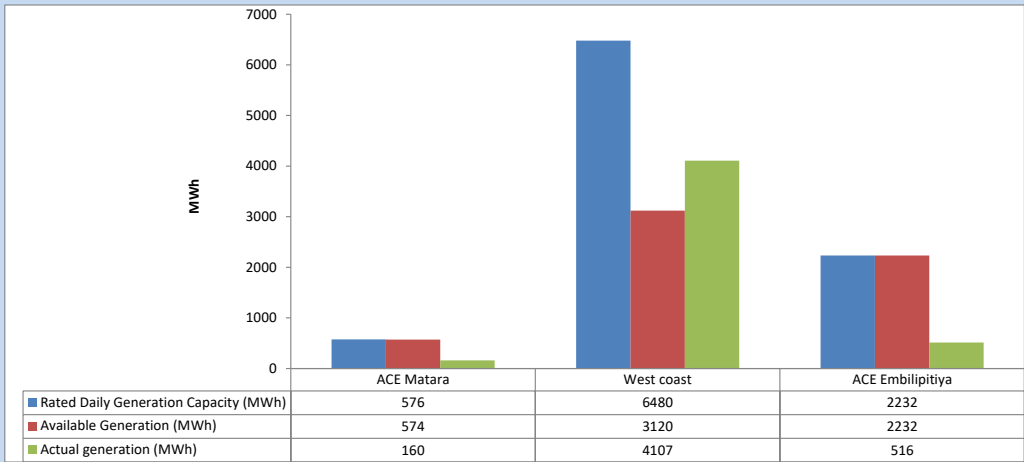


Plant availability is recorded at 6.00 am on

September 28, 2023

5. IPP owned Thermal Plant Dispatch

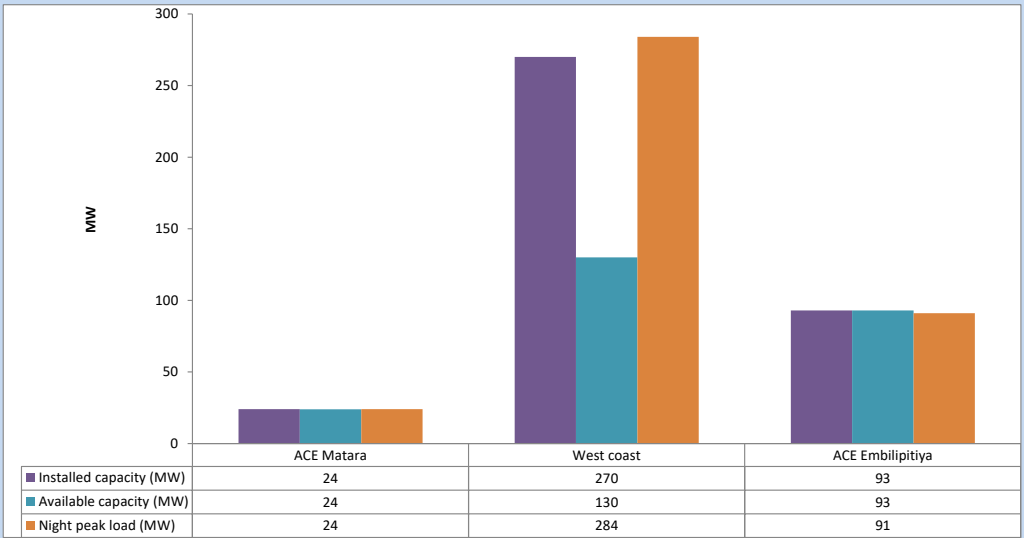
September 27, 2023



Available Generation is estimated based on plant availability at 6.00am on

September 28, 2023

6. IPP owned Thermal Plant Loading at the Night Peak

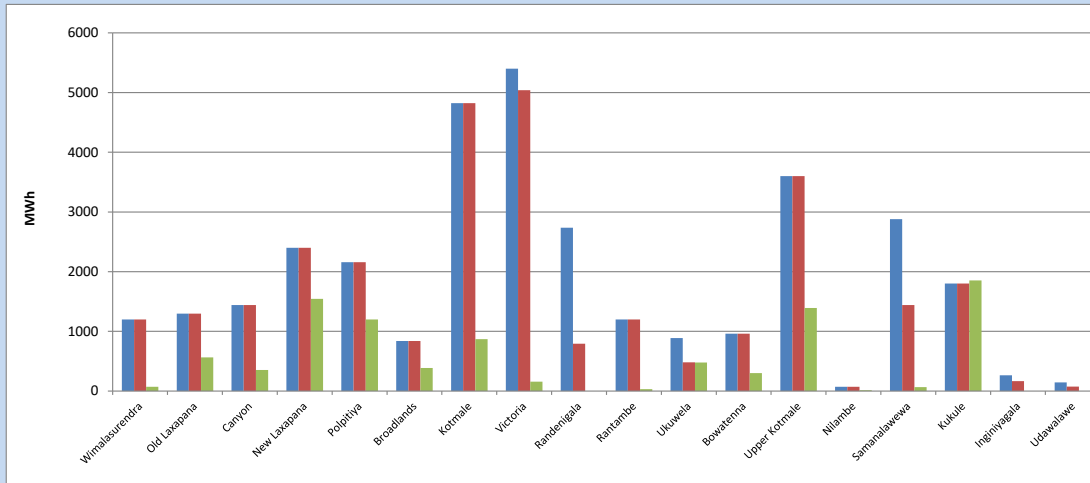


Plant availability is recorded at 6.00 am on

September 28, 2023

### 7. Major Hydro Plant Dispatch

September 27, 2023

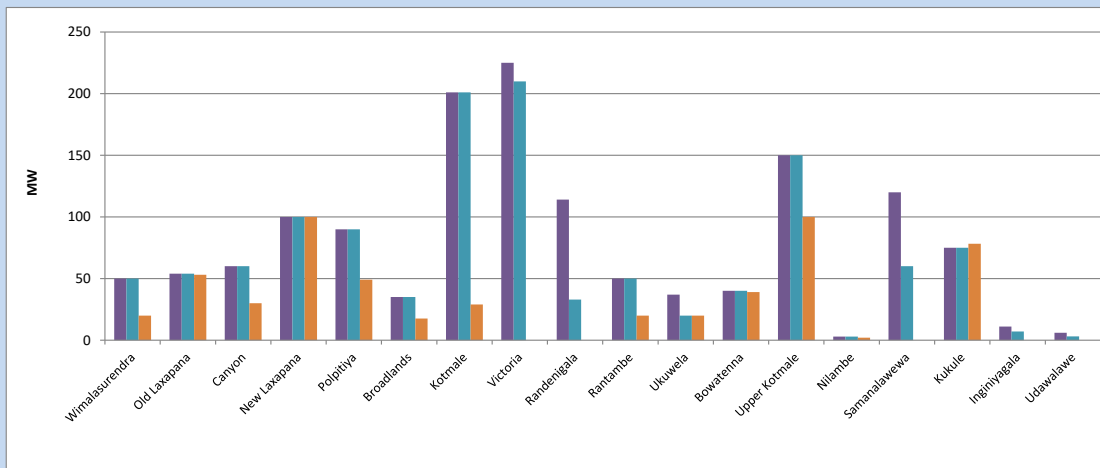


Available Generation is estimated based on plant availability at 6.00am on September 28, 2023  
Broadlands power plant is operating in the Commissioning Stage

September 28, 2023

### 8. Major Hydro Plant Loading at Night Peak

September 27, 2023



Plant availability is recorded at 6.00 am on September 28, 2023  
Broadlands power plant is operating in the Commissioning Stage

September 28, 2023

## 9. Summary of Major Plant performance

Table 05

Plant	Installed Capacity	Plant Availability	Night peak Load	Plant Dispatch
	(MW)	(MW)	(MW)	(MWh)
Wimalasurendra	50	50	20	71
Old Laxapana Canyon	54	54	53	565
New Laxapana	60	60	30	353
Polpitiya	100	100	100	1,545
Broadlands	90	90	49	1,200
Kotmale	35	35	18	387
Kotmale	201	201	29	870
Victoria	225	210	0	157
Randenigala	114	33	0	0
Rantambe	50	50	20	31
Ukuwela	37	20	20	478
Bowatenna	40	40	39	300
Upper Kotmale	150	150	100	1,392
Nilambe	3	3	2	14
Samanalawewa	120	60	0	65
Kukule	75	75	78	1,854
Inginiyagala	11	7	0	0
Udawalawe	6	3	0	0
Puttalam Coal I	270	202	195	4,795
Puttalam Coal II	270	270	272	6,489
Puttalam Coal III	270	0	0	0
KPS Small GTs	64	15	0	0
KPS GT 7	115	0	0	0
KCCP	161	153	149	3,569
Sapugaskanda A	70	50	49	865
Sapugaskanda B	70	72	72	1,336
Uthura Janani	26	24	24	541
Barge CEB	60	60	59	1,178
CEB-Hambantota	30	18	16	72
CEB-Mathugama	20	11	9	38
ACE Matara	24	24	24	160
Asia Power	50	0	0	0
KCCPS -2	163	0	0	0
West Coast	270	130	284	4,107
Nothern Power	36	0	0	0
ACE Embilipitiya	93	93	91	516
<b>Total</b>	<b>3,483</b>	<b>2,362</b>	<b>2,030</b>	<b>39,754</b>

Plant availability is the availability recorded at 6 am on

September 28, 2023

### 10. Contribution to the Night Peak in MW

September 27, 2023

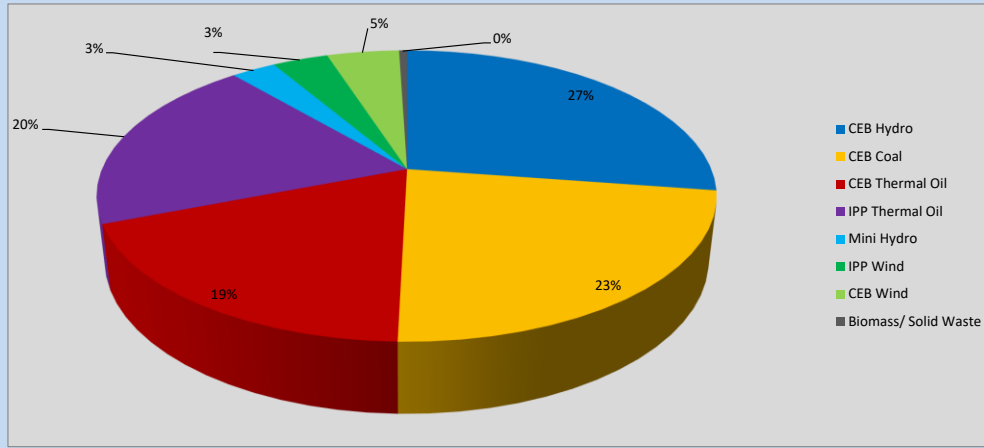


Table 06

CEB Hydro	554	MW
CEB Coal	467	MW
CEB Thermal Oil	378	MW
IPP Thermal Oil	399	MW
Mini Hydro (Telemetered)	56	MW
IPP Wind	70.3	MW
CEB Wind	91.2	MW
Biomass/ Solid Waste	10	MW

### Recorded Peak Demand Data

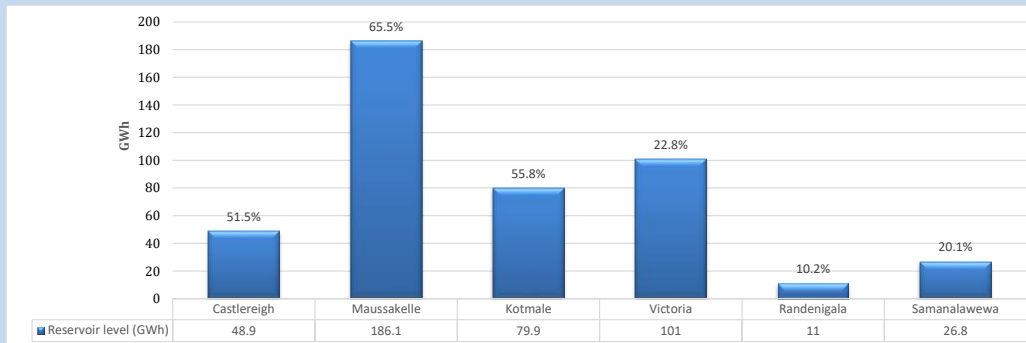
Table 07

Night Peak*	2,026	MW
Day Peak Maximum Demand	1,840	MW
Day Peak Minimum Demand	1,579	MW
Off Peak Minimum Demand	1,149	MW

Above figures are excluding contribution from roof top solar, non telemetered solar and mini hydro plants

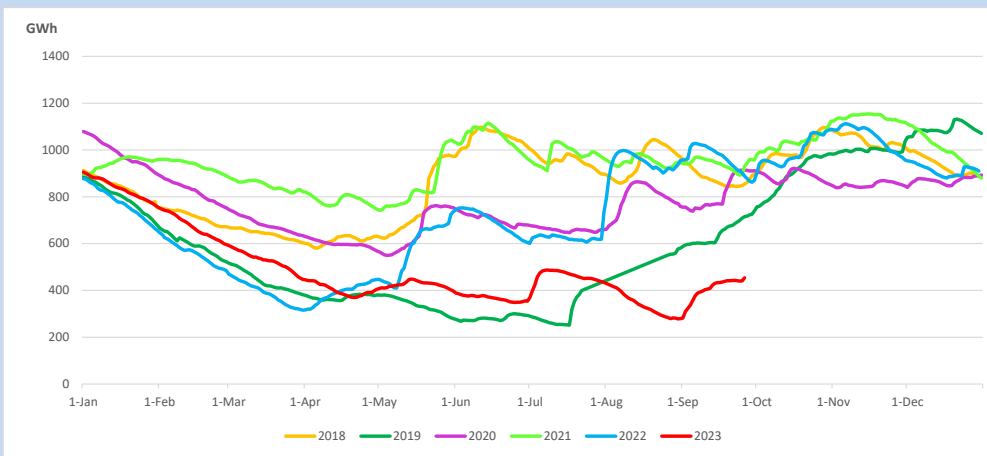
### Reservoir Levels -

as at 06.00 Hr on September 28, 2023

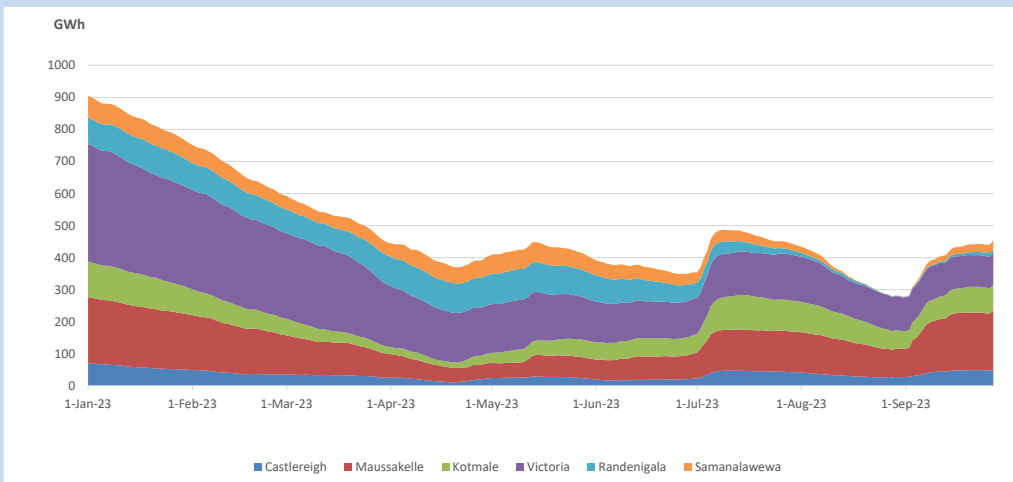


Total Reservoir Level 453.7 GWh  
 % of Total capacity 37.6%

### 11. Comparison of Total Reservoir Storage Levels with Past Years

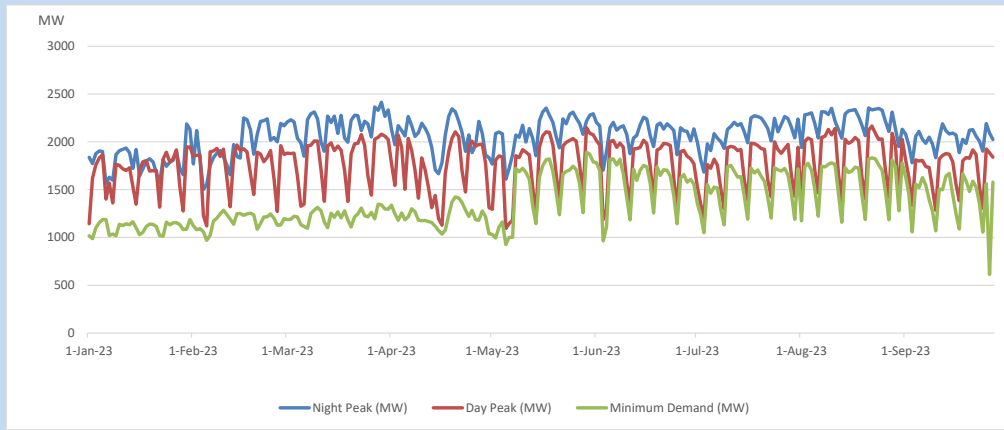


### 12. Variation of Major Hydro Reservoir Levels in the current year (GWh)





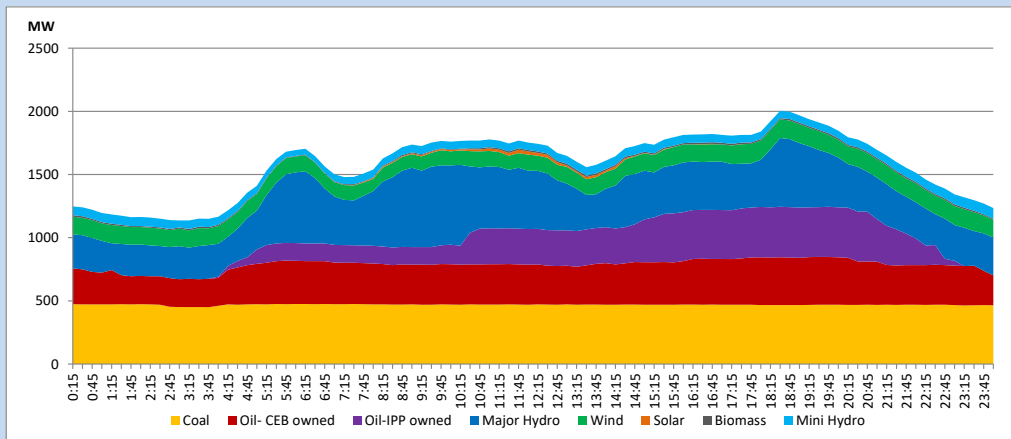
### 13. Variation of Demand during the current year



The above figures are excluding contribution from roof top solar, non telemetered solar and mini hydro plants

### 14. Daily Load Curve

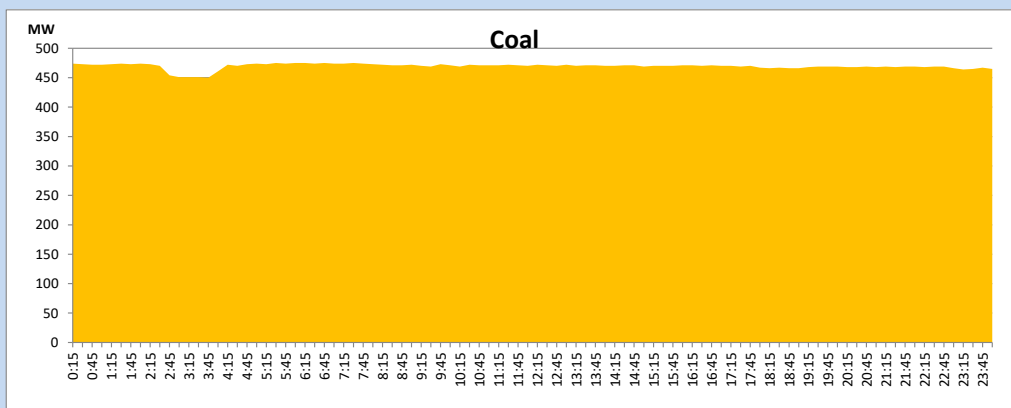
September 27, 2023



Solar and wind data is based on Telemetered Power Stations only

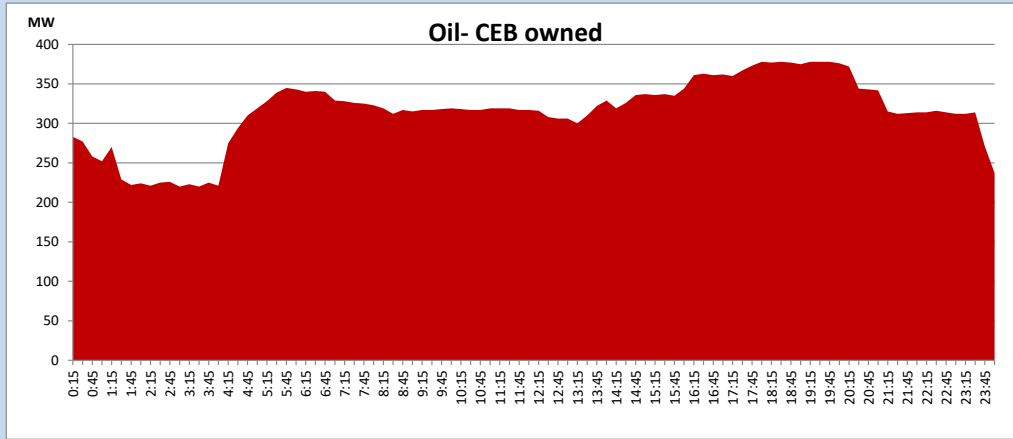
### Coal Generation during

September 27, 2023



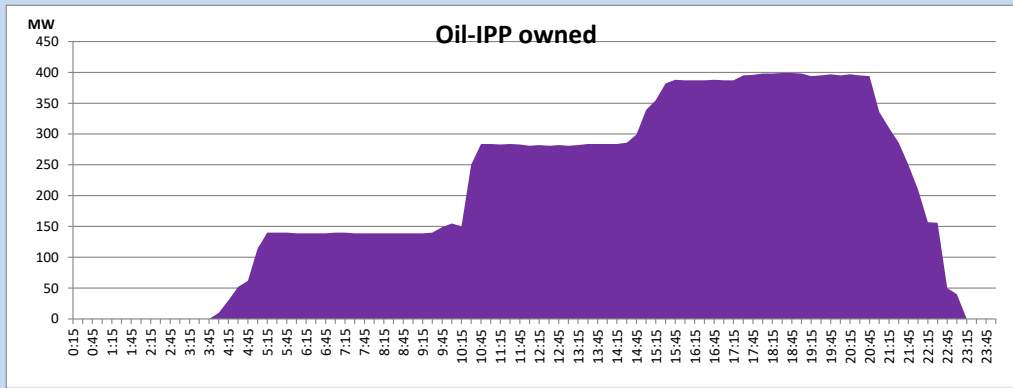
CEB Oil Plant Generation during

September 27, 2023



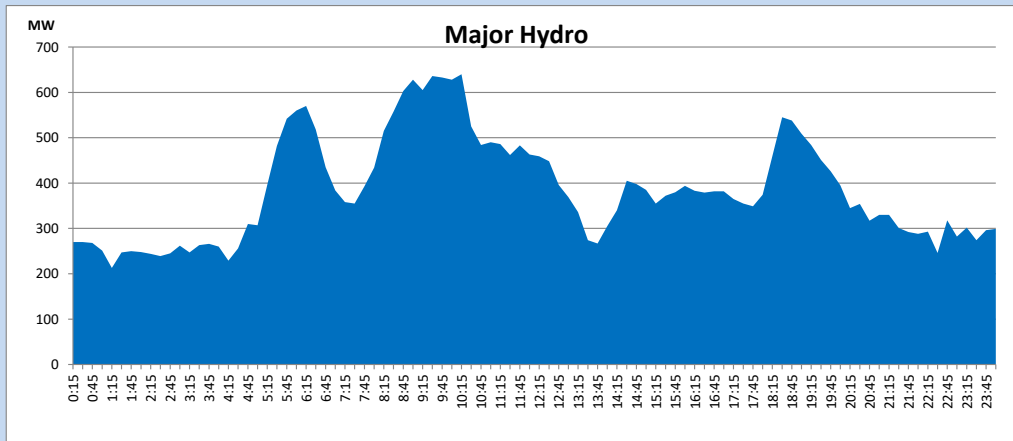
IPP Oil Plant Generation during

September 27, 2023



Major Hydro Generation during

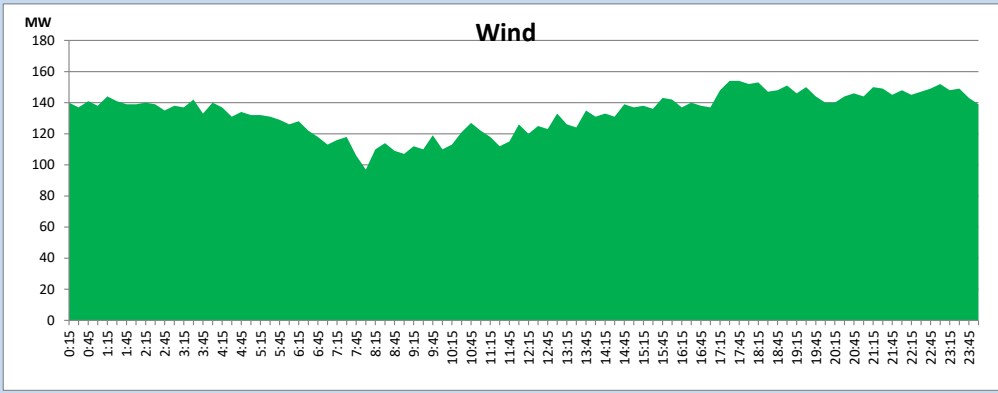
September 27, 2023



## Wind Generation during

September 27, 2023

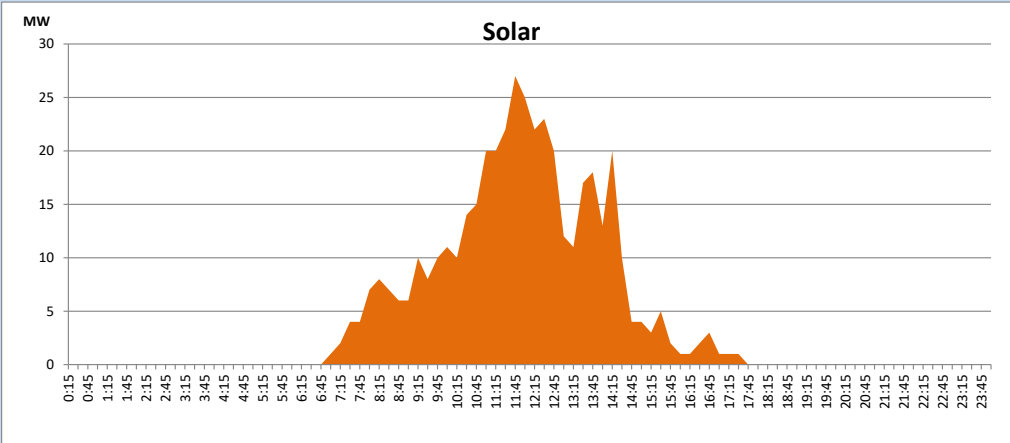
Based on Telemetered Power Stations only



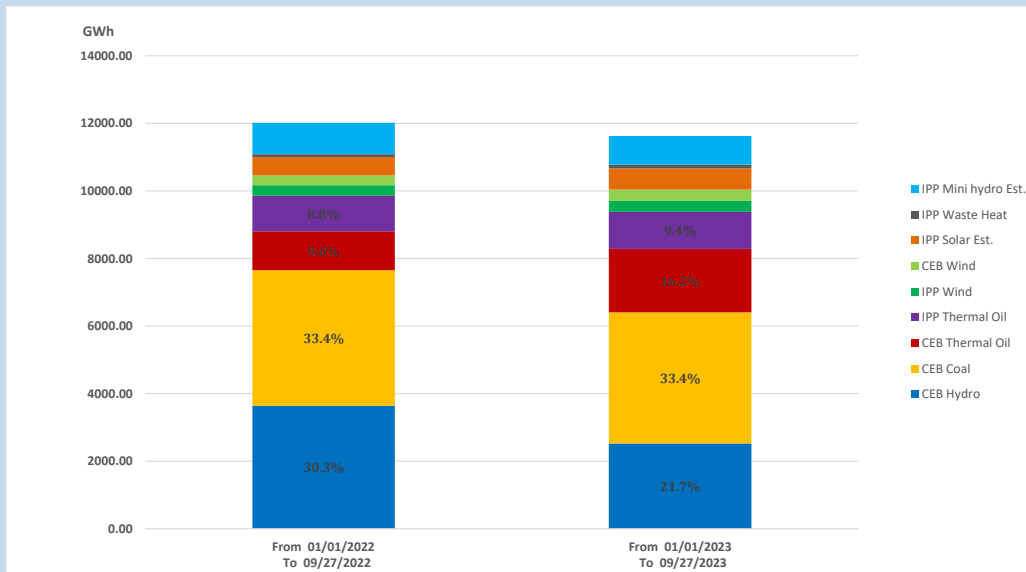
## Solar Generation during

September 27, 2023

Based on Telemetered Power Stations only



## 15. Cumulative Dispatch Comparison with Last Year



### Cumulative dispatch

From 01/01/2022 To 09/27/2022

12014 GWh

From 01/01/2023 To 09/27/2023

11626 GWh

The above figures are including contribution from roof top solar, non telemetered solar and mini hydro plants (figures have been adjusted based on the data from the CEB monthly review reports.)

Thermal Plant Fuel types

Table 08

Power Station	Primary Fuel
CEB Thermal	
Sapugaskanda 1	Heavy Fuel
Sapugaskanda 2	Heavy Fuel
Kelanitissa Small Gas Turbines	Auto Diesel
GT 7 - Kelanitissa	Auto Diesel
Kelanitissa CCY	Naphtha or Diesel
Lakvijaya 1	Coal
Lakvijaya 2	Coal
Lakvijaya 3	Coal
Uthuru Janani	Heavy Fuel
Barge CEB	Heavy Fuel
KCCPS -2	Auto Diesel

Power Station	Primary Fuel
Private Thermal	
West Coast	Auto Diesel / Heavy Fuel
ACE Matara	Heavy Fuel
ACE Embilipitiya	Heavy Fuel

Major Incidents reported during the day

September 27, 2023

- 1) Kukule spilling continues to present hour.