

Generation and Reservoirs Statistics

September 25, 2023



PUBLIC UTILITIES COMMISSION OF SRI LANKA

1. Daily Generation Mix in MWh

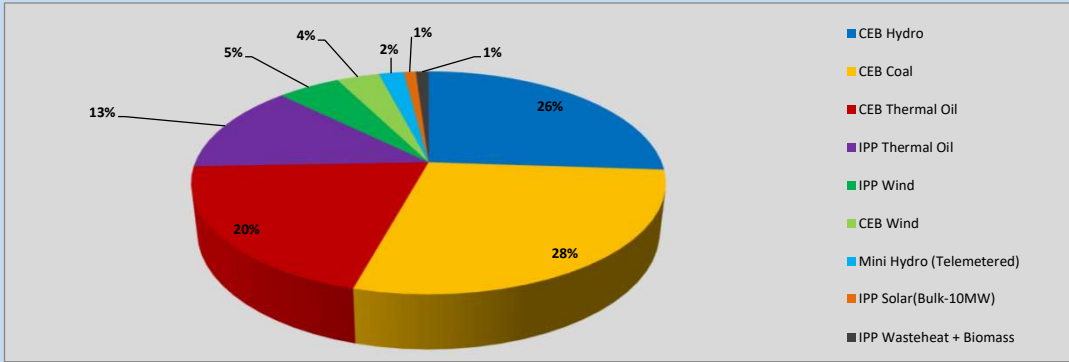


Table 01

	Generation (MWh)
CEB Hydro	10,409
CEB Coal	11,262
CEB Thermal Oil	8,042
IPP Thermal Oil	5,161
IPP Wind	2,044
CEB Wind	1,387
Mini Hydro (Telemetered)	814
IPP Solar (Bulk)	390
IPP Waste heat + Biomass	418
Total Generation (Excluding estimated figures)	39,927
* Estimated unserved energy	0
* Estimated Mini Hydro (Non telemetered)	2826
* Estimated IPP Solar PV (Bulk 1-10MW)	304
* Estimated Solar Roof Top PV	1660
Total Generation (Including estimated figures)	44,717

* Estimated figures of CEB generation report

Table 02

	Installed Capacity (MW)
CEB Hydro	1409
CEB Coal	810
CEB Thermal Oil	781
IPP Thermal Oil (West Coast, ACE Matara and ACE Embilipitiya)	387
IPP Wind	148
CEB Wind	100
Mini Hydro	416
IPP Waste heat + Biomass	50
IPP Solar	130
Rooftop Solar* (Ordinary)	267
Rooftop Solar* (LT Bulk)	256
Rooftop Solar* (HT Bulk)	61

Data Source - Monthly Review Report [May-2023]

2. Cumulative Dispatch

Following data excludes the contribution from roof top solar, non telemetered solar and mini hydro plants

Table 03 - Current Month

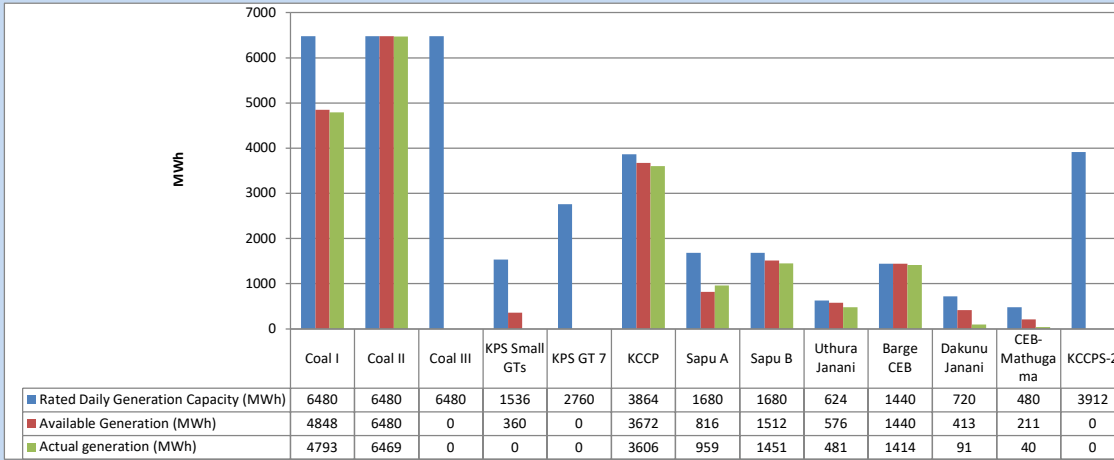
Category	Dispatch (GWh)	
CEB Hydro	215	23.19%
CEB Coal	283	30.46%
CEB Thermal Oil	182	19.60%
IPP Thermal	93	10.06%
SPP Wind	53	5.68%
CEB Wind	52	5.61%
Mini Hydro (Telemetered)	33	3.60%
IPP Solar(Bulk-10MW)	7	0.75%
IPP Waste heat + BMP	10	1.06%
Total	928	

Table 04 - Current Year

Category	Dispatch (GWh)	
CEB Hydro	2,514	24.20%
CEB Coal	3,867	37.23%
CEB Thermal Oil	1,867	17.97%
IPP Thermal	1,083	10.43%
SPP Wind	313	3.01%
CEB Wind	321	3.09%
Mini Hydro (Telemetered)	244	2.34%
IPP Solar(Bulk-10MW)	81	0.78%
IPP Waste heat	97	0.94%
Total	10,389	

3. CEB owned Thermal Plant Dispatch

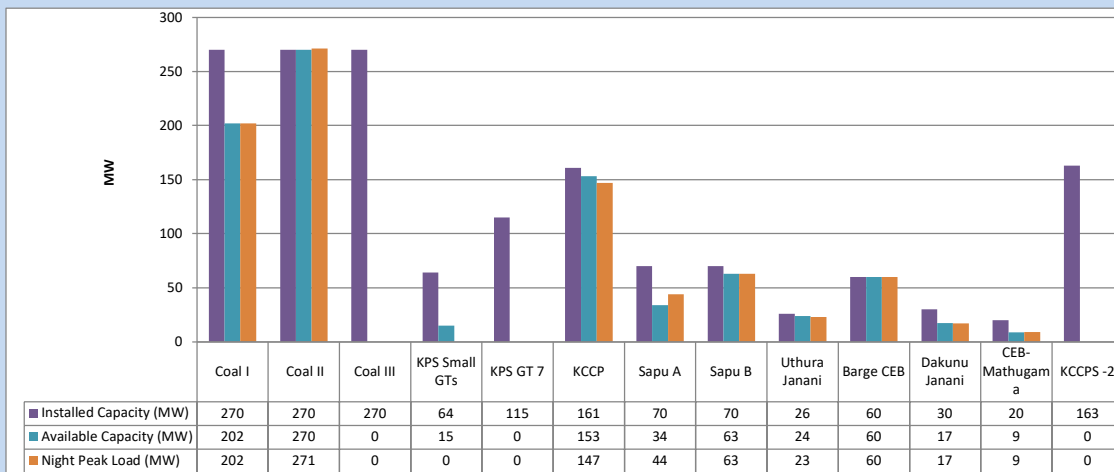
September 25, 2023



Available Generation is estimated based on plant availability at 6.00am on

September 26, 2023

4. CEB owned Thermal Plant Loading at the Night Peak

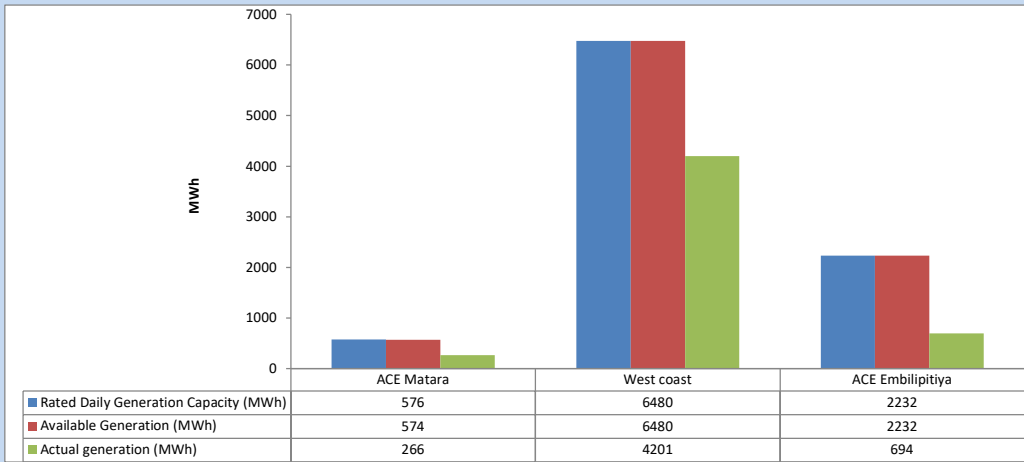


Plant availability is recorded at 6.00 am on

September 26, 2023

5. IPP owned Thermal Plant Dispatch

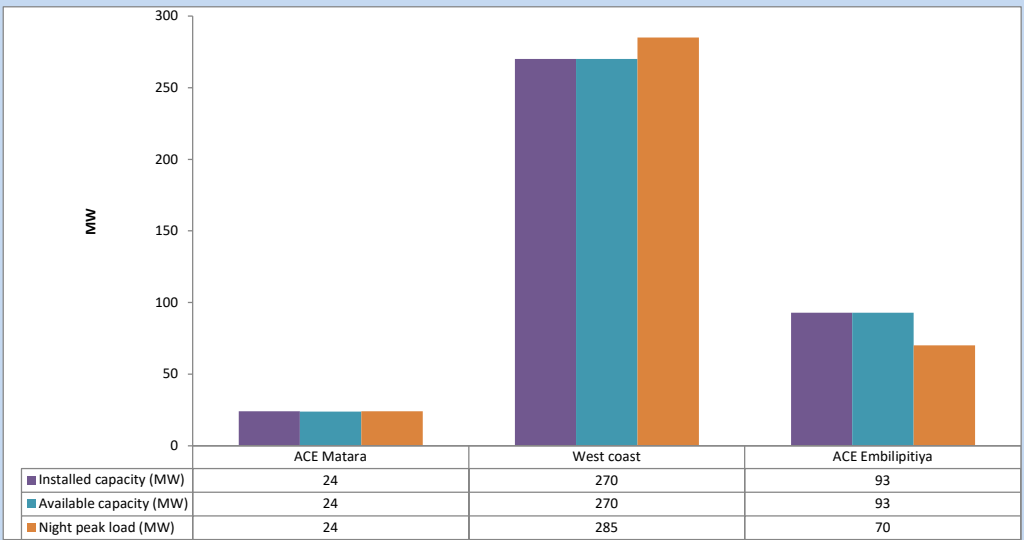
September 25, 2023



Available Generation is estimated based on plant availability at 6.00am on

September 26, 2023

6. IPP owned Thermal Plant Loading at the Night Peak

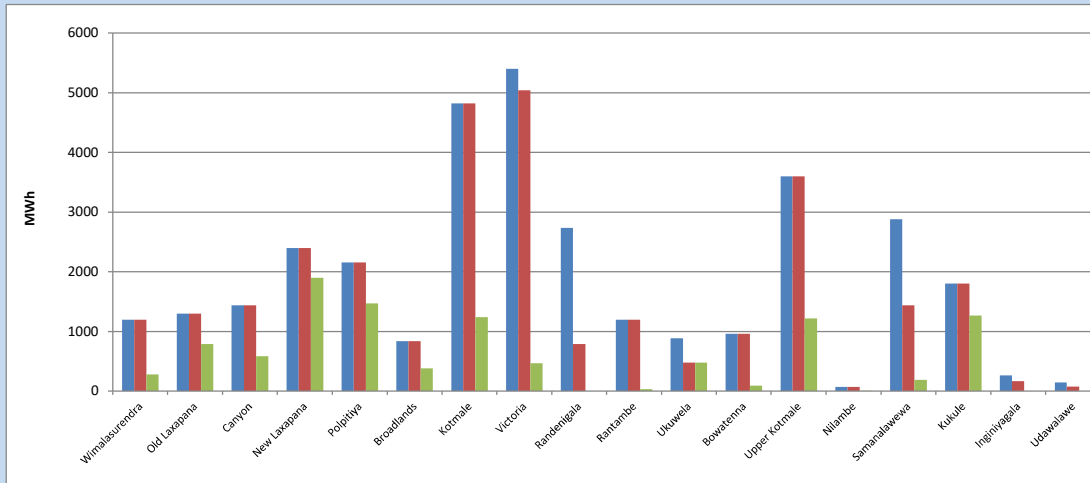


Plant availability is recorded at 6.00 am on

September 26, 2023

7. Major Hydro Plant Dispatch

September 25, 2023

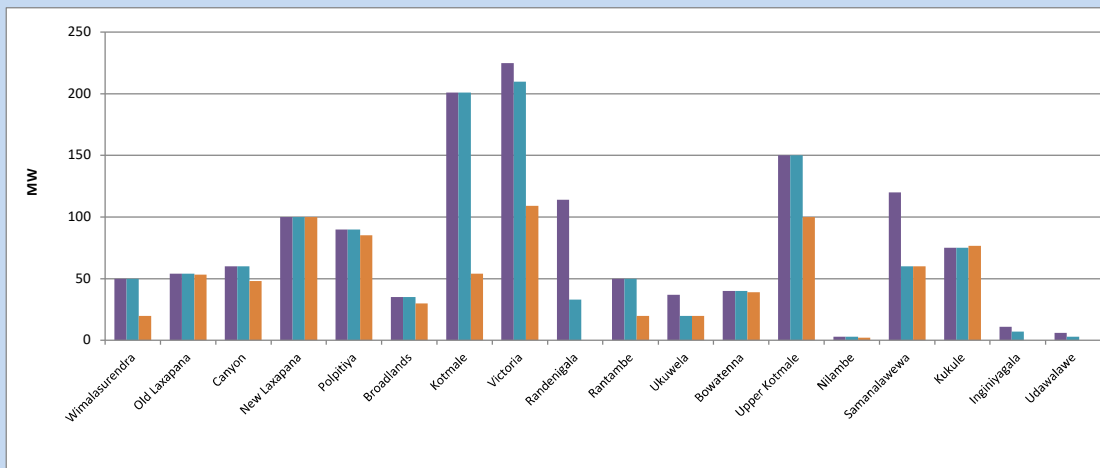


Available Generation is estimated based on plant availability at 6.00am on September 26, 2023
Broadlands power plant is operating in the Commissioning Stage

September 26, 2023

8. Major Hydro Plant Loading at Night Peak

September 25, 2023



Plant availability is recorded at 6.00 am on September 26, 2023
Broadlands power plant is operating in the Commissioning Stage

September 26, 2023

9. Summary of Major Plant performance

Table 05

Plant	Installed Capacity (MW)	Plant Availability (MW)	Night peak Load (MW)	Plant Dispatch (MWh)
Wimalasurendra	50	50	20	283
Old Laxapana	54	54	53	792
Canyon	60	60	48	588
New Laxapana	100	100	100	1,902
Polpitiya	90	90	85	1,470
Broadlands	35	35	30	383
Kotmale	201	201	54	1,240
Victoria	225	210	109	466
Randenigala	114	33	0	0
Rantambe	50	50	20	31
Ukuwela	37	20	20	479
Bowatenna	40	40	39	93
Upper Kotmale	150	150	100	1,221
Nilambe	3	3	2	7
Samanalawewa	120	60	60	189
Kukule	75	75	77	1,265
Inginiyagala	11	7	0	0
Udawalawe	6	3	0	0
Puttalam Coal I	270	202	202	4,793
Puttalam Coal II	270	270	271	6,469
Puttalam Coal III	270	0	0	0
KPS Small GTs	64	15	0	0
KPS GT 7	115	0	0	0
KCCP	161	153	147	3,606
Sapugaskanda A	70	34	44	959
Sapugaskanda B	70	63	63	1,451
Uthura Janani	26	24	23	481
Barge CEB	60	60	60	1,414
CEB-Hambantota	30	17	17	91
CEB-Mathugama	20	9	9	40
ACE Matara	24	24	24	266
Asia Power	50	0	0	0
KCCPS -2	163	0	0	0
West Coast	270	270	285	4,201
Nothern Power	36	0	0	0
ACE Embilipitiya	93	93	70	694
Total	3,483	2,475	2,197	39,927

Plant availability is the availability recorded at 6 am on

September 26, 2023

10. Contribution to the Night Peak in MW

September 25, 2023

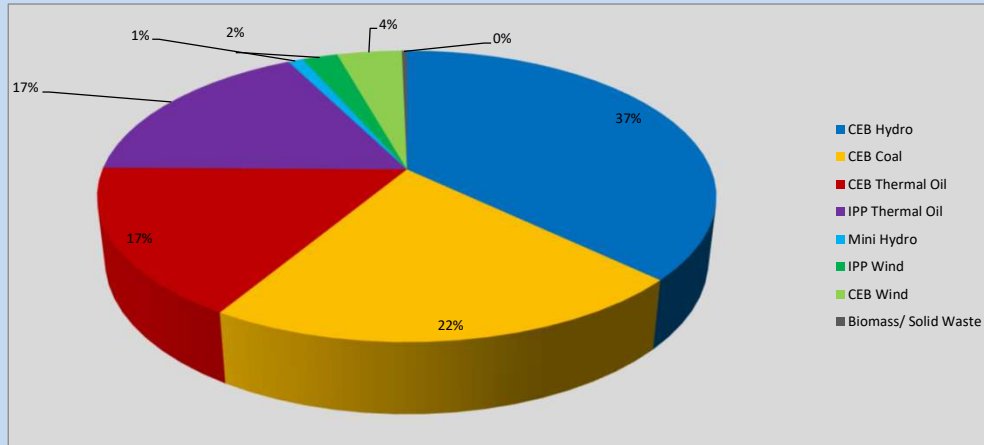


Table 06

CEB Hydro	812	MW
CEB Coal	473	MW
CEB Thermal Oil	363	MW
IPP Thermal Oil	379	MW
Mini Hydro (Telemetered)	21	MW
IPP Wind	48.3	MW
CEB Wind	88.7	MW
Biomass/ Solid Waste	7	MW

Recorded Peak Demand Data

Table 07

Night Peak*	2,192	MW
Day Peak Maximum Demand	1,926	MW
Day Peak Minimum Demand	1,562	MW
Off Peak Minimum Demand	1,112	MW

Above figures are excluding contribution from roof top solar, non telemetered solar and mini hydro plants

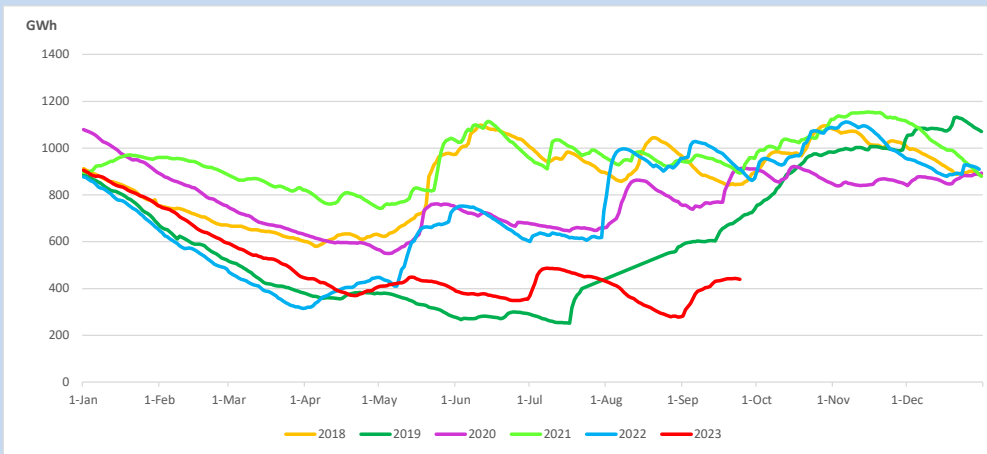
Reservoir Levels -

as at 06.00 Hr on September 26, 2023

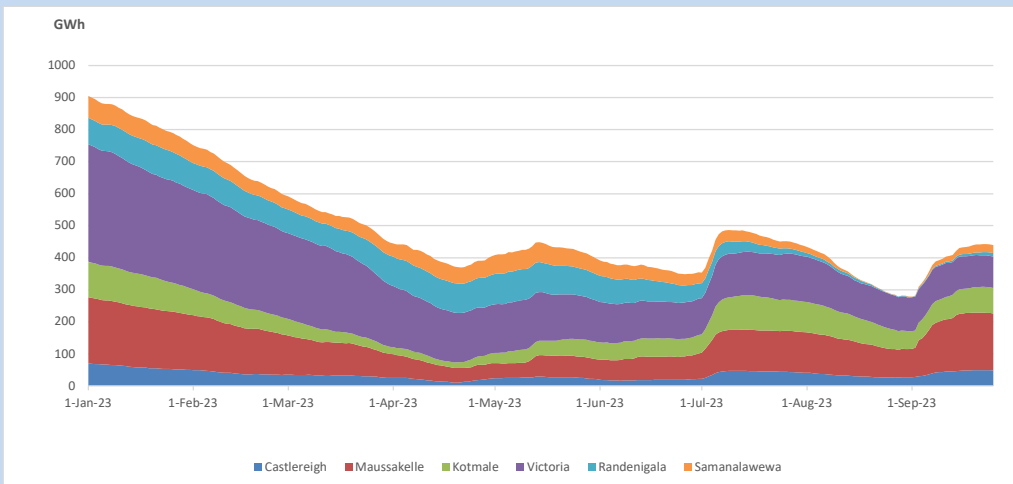


Total Reservoir Level 440 GWh
 % of Total capacity 36.5%

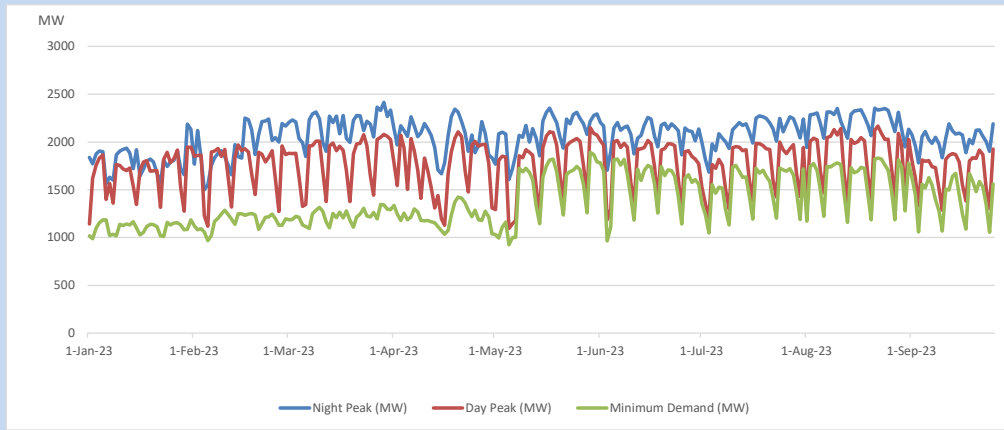
11. Comparison of Total Reservoir Storage Levels with Past Years



12. Variation of Major Hydro Reservoir Levels in the current year (GWh)



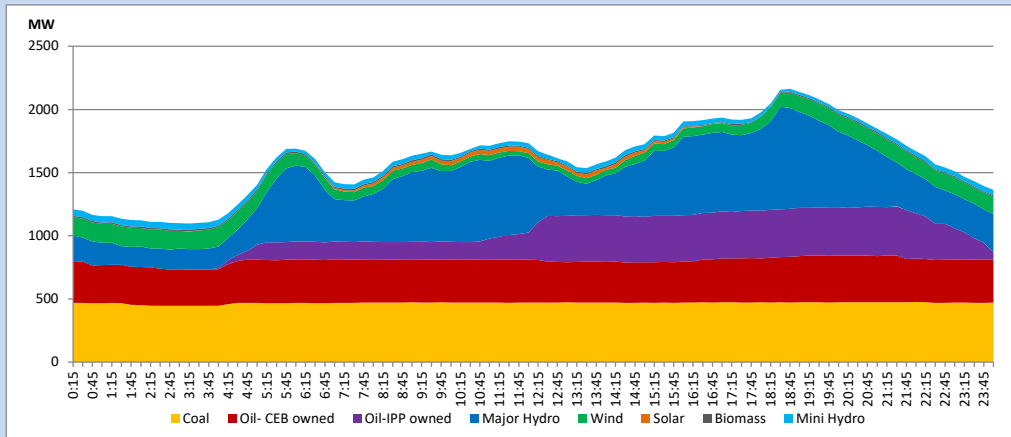
13. Variation of Demand during the current year



The above figures are excluding contribution from roof top solar, non telemetered solar and mini hydro plants

14. Daily Load Curve

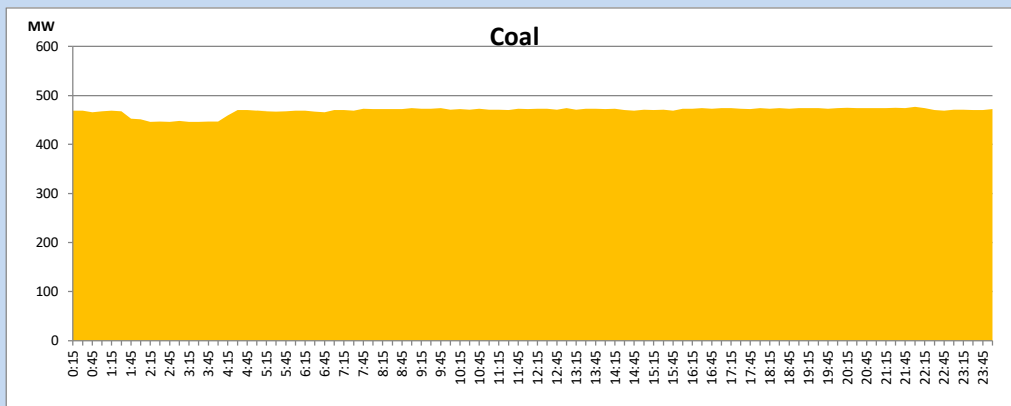
September 25, 2023



Solar and wind data is based on Telemetered Power Stations only

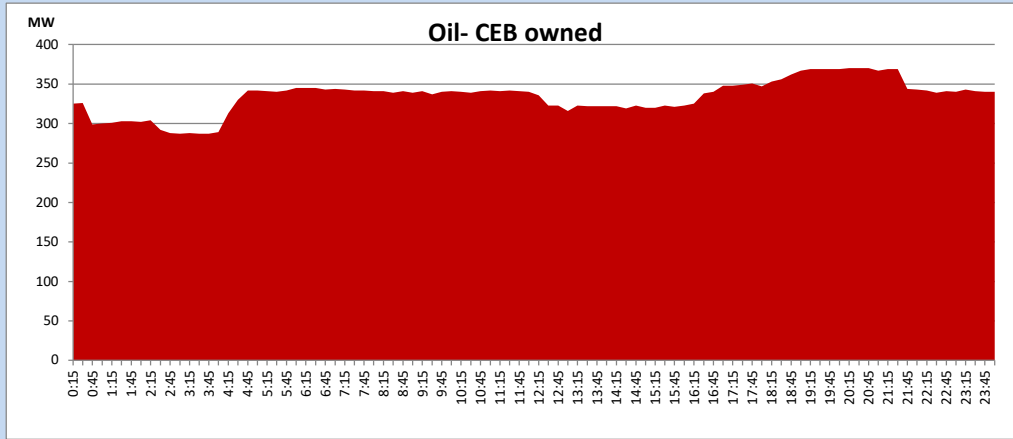
Coal Generation during

September 25, 2023



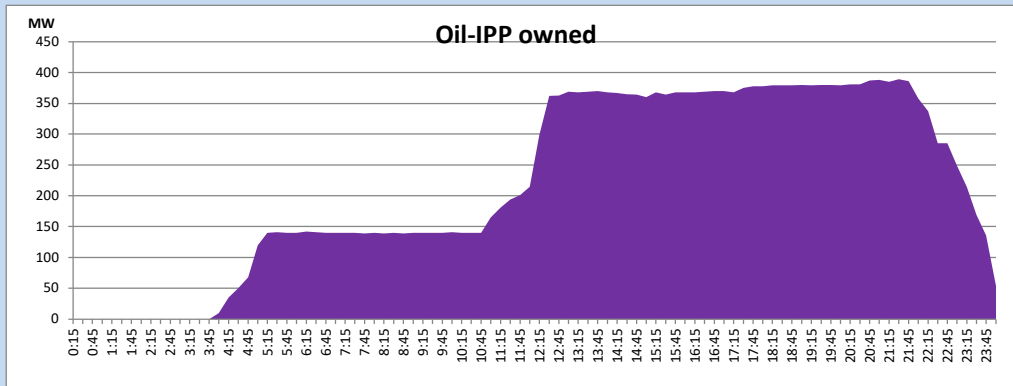
CEB Oil Plant Generation during

September 25, 2023



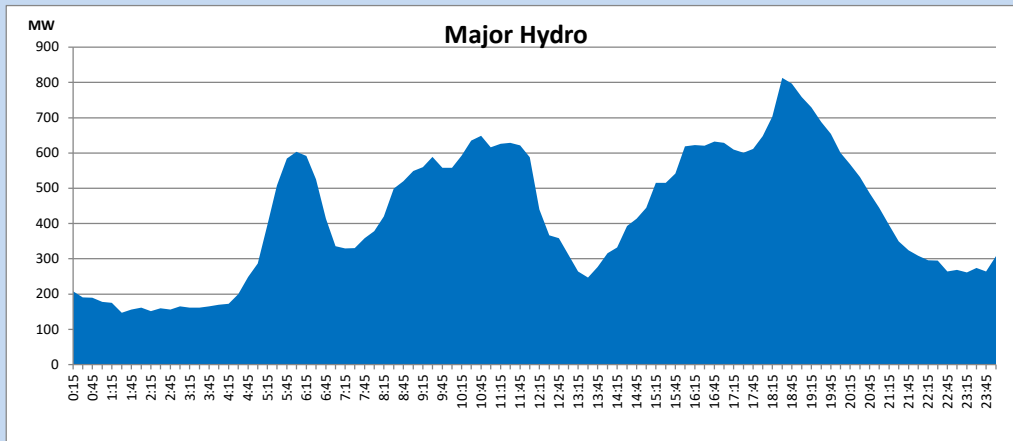
IPP Oil Plant Generation during

September 25, 2023



Major Hydro Generation during

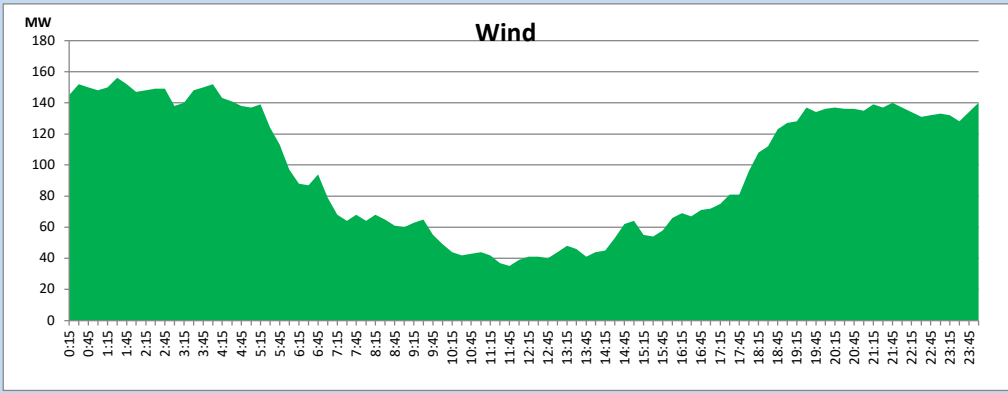
September 25, 2023



Wind Generation during

September 25, 2023

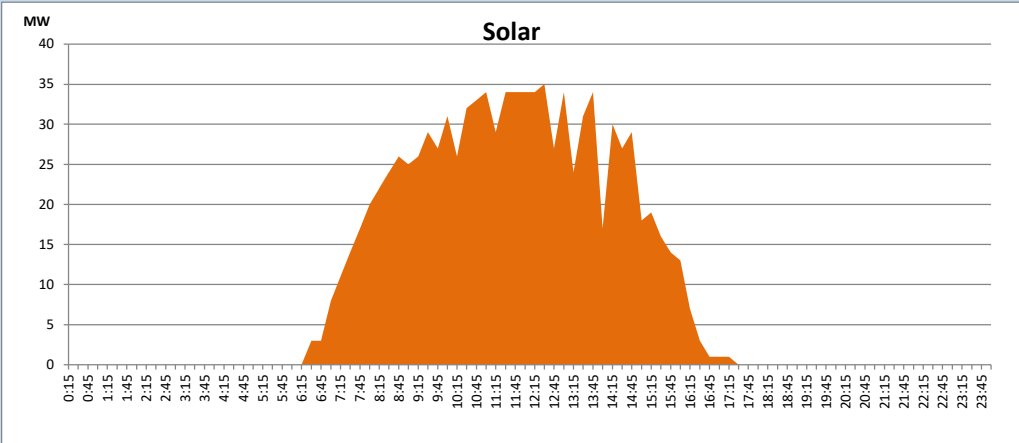
Based on Telemetered Power Stations only



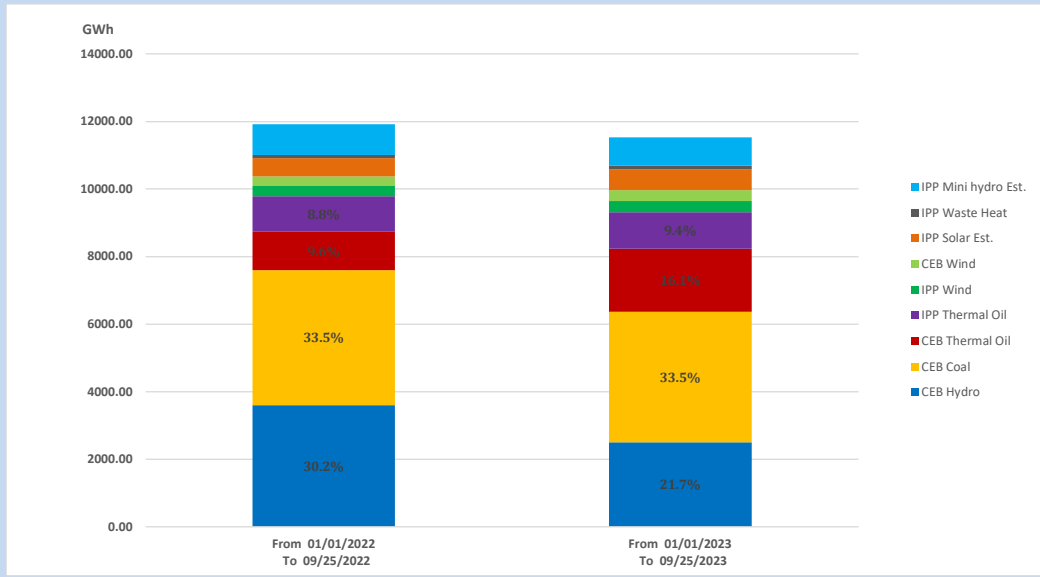
Solar Generation during

September 25, 2023

Based on Telemetered Power Stations only



15. Cumulative Dispatch Comparison with Last Year



Cumulative dispatch

From 01/01/2022 To 09/25/2022

11923 GWh

From 01/01/2023 To 09/25/2023

11537 GWh

The above figures are including contribution from roof top solar, non telemetered solar and mini hydro plants (figures have been adjusted based on the data from the CEB monthly review reports.)

Thermal Plant Fuel types

Table 08

Power Station	Primary Fuel
CEB Thermal	
Sapugaskanda 1	Heavy Fuel
Sapugaskanda 2	Heavy Fuel
Kelanitissa Small Gas Turbines	Auto Diesel
GT 7 - Kelanitissa	Auto Diesel
Kelanitissa CCY	Naphtha or Diesel
Lakvijaya 1	Coal
Lakvijaya 2	Coal
Lakvijaya 3	Coal
Uthuru Janani	Heavy Fuel
Barge CEB	Heavy Fuel
KCCPS -2	Auto Diesel

Power Station	Primary Fuel
Private Thermal	
West Coast	Auto Diesel / Heavy Fuel
ACE Matara	Heavy Fuel
ACE Embilipitiya	Heavy Fuel

Major Incidents reported during the day

September 25, 2023

- 1). Athurugiriya - Thulhiriya – New Polpitiya 132kV cct tripped from all three ends at 09:26hrs due to the operation of distance protection. The cct normalized at 9:38hrs.
- 2) Mahiyanganaya - Vavunativu and Mahiyanganaya - Ampara both 132kV ccts tripped at 15:22hrs from all ends due to the operation of the distance protection. Subsequently, Vavunativu GSS, Ampara GSS, and Monaragala GSS were dead due to incoming supply failure. Ampara GSS, Vavunativu GSS, and Monaragala GSS were normalized at 15:46hrs, 15:52hrs, and 15:58hrs respectively
- 3) Seethawaka 132/33kV T/F 01 tripped from both sides and 132/33kV T/F 03 tripped only from the 33kV side along with 33kV B/S CB at 17:29hrs causing 33kV bus 01 and associated feeder no. 01, 03 & 05 to be dead. Seethawaka 132/33kV T/F 01 and 03 were normalized at 19:19hrs and 19:15hrs respectively. All affected feeders were normalized at 19:21hrs. Seethawaka 33kV B/S CB is yet to be normalized.