

Generation and Reservoirs Statistics

September 24, 2023



PUBLIC UTILITIES COMMISSION OF SRI LANKA

1. Daily Generation Mix in MWh

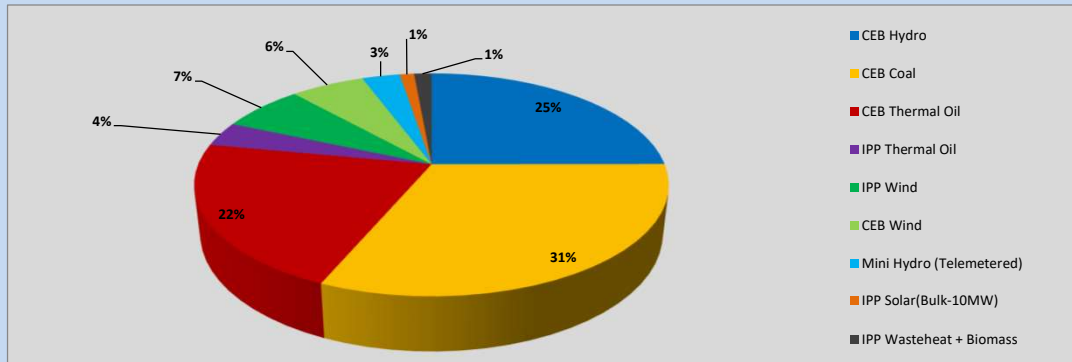


Table 01

	Generation (MWh)
CEB Hydro	8,155
CEB Coal	10,279
CEB Thermal Oil	7,039
IPP Thermal Oil	1,167
IPP Wind	2,210
CEB Wind	1,960
Mini Hydro (Telemetered)	1,010
IPP Solar (Bulk)	381
IPP Waste heat + Biomass	466
Total Generation (Excluding estimated figures)	32,667
* Estimated unserved energy	0
* Estimated Mini Hydro (Non telemetered)	2630
* Estimated IPP Solar PV (Bulk 1-10MW)	304
* Estimated Solar Roof Top PV	1660
Total Generation (Including estimated figures)	37,261

* Estimated figures of CEB generation report

Table 02

	Installed Capacity (MW)
CEB Hydro	1409
CEB Coal	810
CEB Thermal Oil	781
IPP Thermal Oil (West Coast, ACE Matara and ACE Embilipitiya)	387
IPP Wind	148
CEB Wind	100
Mini Hydro	416
IPP Waste heat + Biomass	50
IPP Solar	130
Rooftop Solar* (Ordinary)	267
Rooftop Solar* (LT Bulk)	256
Rooftop Solar* (HT Bulk)	61

Data Source - Monthly Review Report [May-2023]

2. Cumulative Dispatch

Following data excludes the contribution from roof top solar, non telemetered solar and mini hydro plants

Table 03 - Current Month

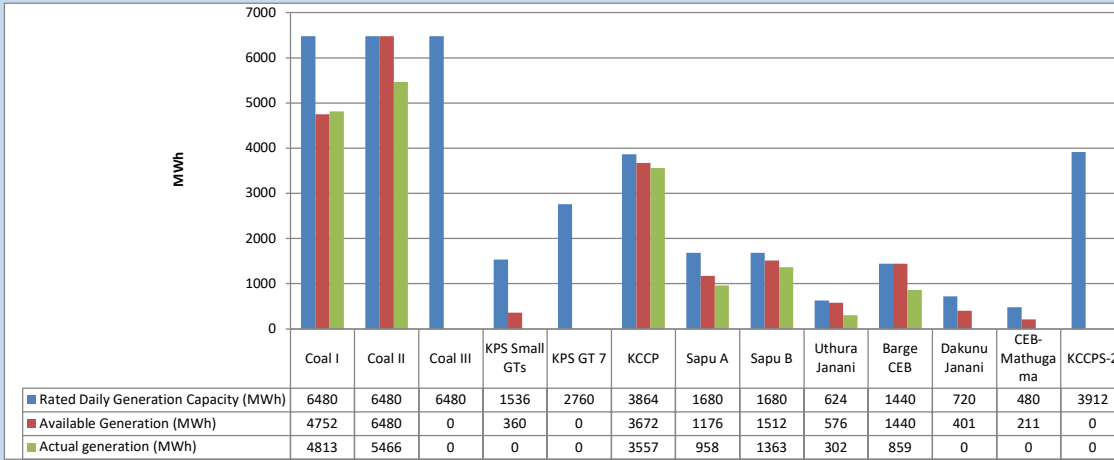
Category	Dispatch (GWh)	
CEB Hydro	205	23.06%
CEB Coal	272	30.56%
CEB Thermal Oil	174	19.58%
IPP Thermal	88	9.93%
SPP Wind	51	5.71%
CEB Wind	51	5.70%
Mini Hydro (Telemetered)	33	3.67%
IPP Solar(Bulk-10MW)	7	0.74%
IPP Waste heat + BMP	9	1.06%
Total	888	

Table 04 - Current Year

Category	Dispatch (GWh)	
CEB Hydro	2,504	24.19%
CEB Coal	3,856	37.26%
CEB Thermal Oil	1,859	17.97%
IPP Thermal	1,078	10.42%
SPP Wind	311	3.01%
CEB Wind	320	3.09%
Mini Hydro (Telemetered)	243	2.35%
IPP Solar(Bulk-10MW)	81	0.78%
IPP Waste heat	97	0.93%
Total	10,349	

3. CEB owned Thermal Plant Dispatch

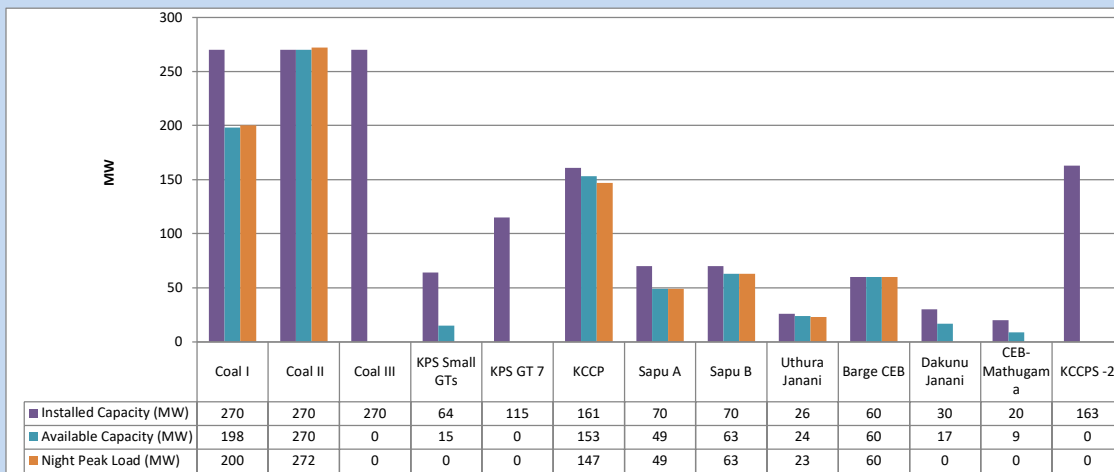
September 24, 2023



Available Generation is estimated based on plant availability at 6.00am on

September 25, 2023

4. CEB owned Thermal Plant Loading at the Night Peak

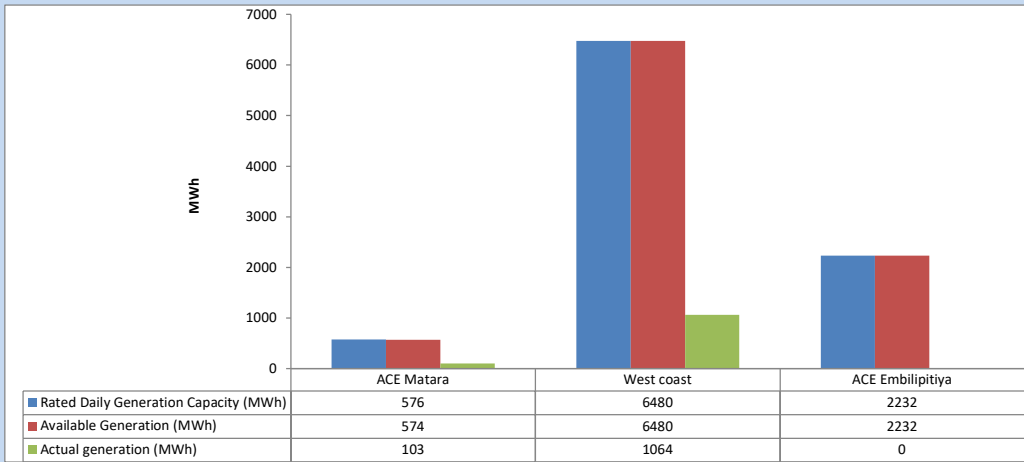


Plant availability is recorded at 6.00 am on

September 25, 2023

5. IPP owned Thermal Plant Dispatch

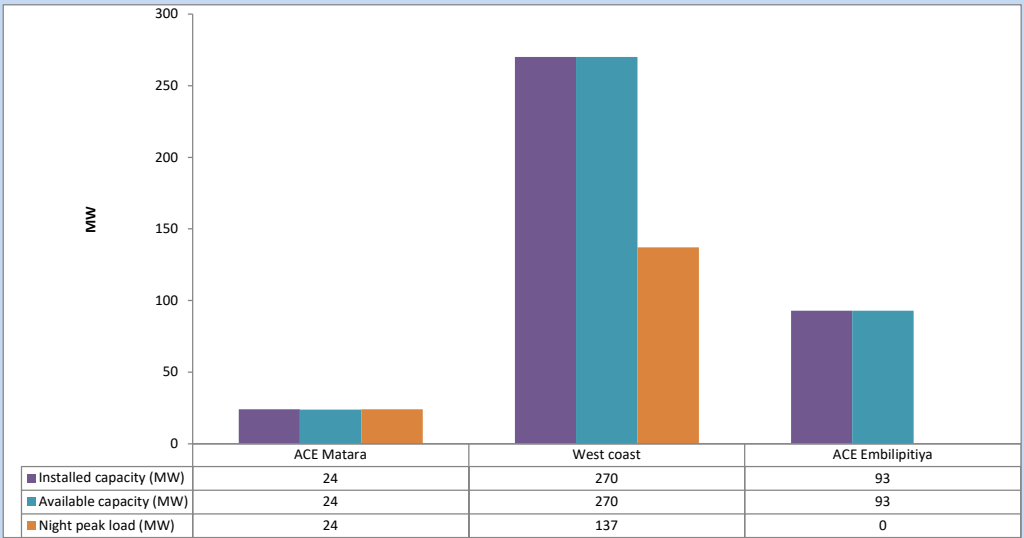
September 24, 2023



Available Generation is estimated based on plant availability at 6.00am on

September 25, 2023

6. IPP owned Thermal Plant Loading at the Night Peak

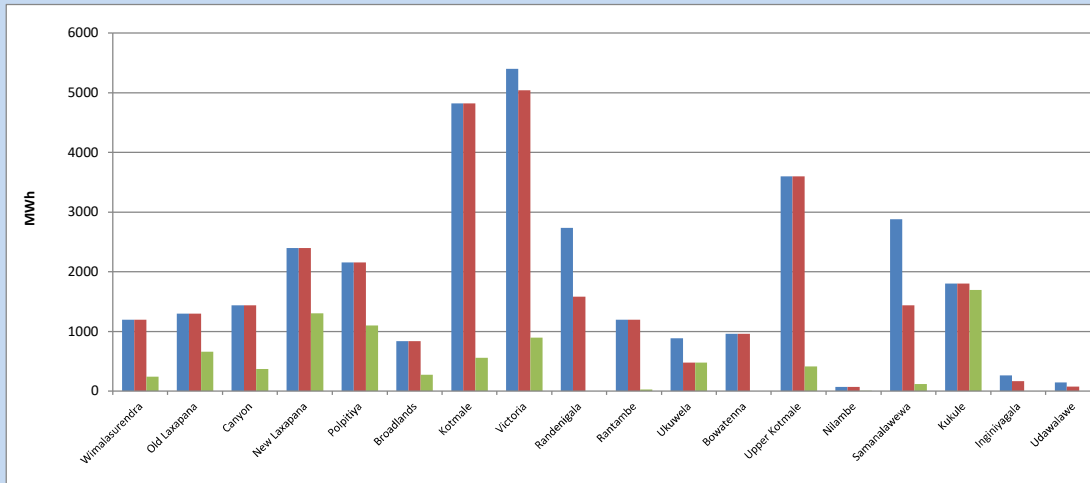


Plant availability is recorded at 6.00 am on

September 25, 2023

7. Major Hydro Plant Dispatch

September 24, 2023

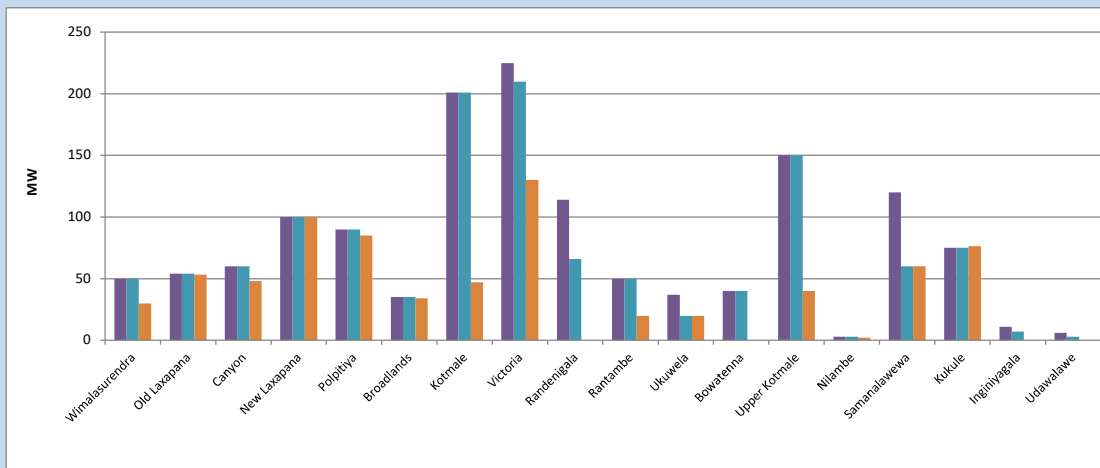


Available Generation is estimated based on plant availability at 6.00am on September 25, 2023
Broadlands power plant is operating in the Commissioning Stage

September 25, 2023

8. Major Hydro Plant Loading at Night Peak

September 24, 2023



Plant availability is recorded at 6.00 am on September 25, 2023
Broadlands power plant is operating in the Commissioning Stage

September 25, 2023

9. Summary of Major Plant performance

Table 05

Plant	Installed Capacity	Plant Availability	Night peak Load	Plant Dispatch
	(MW)	(MW)	(MW)	(MWh)
Wimalasurendra	50	50	30	243
Old Laxapana	54	54	53	661
Canyon	60	60	48	370
New Laxapana	100	100	100	1,304
Polpitiya	90	90	85	1,100
Broadlands	35	35	34	273
Kotmale	201	201	47	560
Victoria	225	210	130	899
Randenigala	114	66	0	0
Rantambe	50	50	20	29
Ukuwela	37	20	20	480
Bowatenna	40	40	0	0
Upper Kotmale	150	150	40	415
Nilambe	3	3	2	7
Samanalawewa	120	60	60	118
Kukule	75	75	77	1,696
Inginiyagala	11	7	0	0
Udawalawe	6	3	0	0
Puttalam Coal I	270	198	200	4,813
Puttalam Coal II	270	270	272	5,466
Puttalam Coal III	270	0	0	0
KPS Small GTs	64	15	0	0
KPS GT 7	115	0	0	0
KCCP	161	153	147	3,557
Sapugaskanda A	70	49	49	958
Sapugaskanda B	70	63	63	1,363
Uthura Janani	26	24	23	302
Barge CEB	60	60	60	859
CEB-Hambantota	30	17	0	0
CEB-Mathugama	20	9	0	0
ACE Matara	24	24	24	103
Asia Power	50	0	0	0
KCCPS -2	163	0	0	0
West Coast	270	270	137	1,064
Nothern Power	36	0	0	0
ACE Embilipitiya	93	93	0	0
Total	3,483	2,519	1,908	32,667

Plant availability is the availability recorded at 6 am on

September 25, 2023

10. Contribution to the Night Peak in MW

September 24, 2023

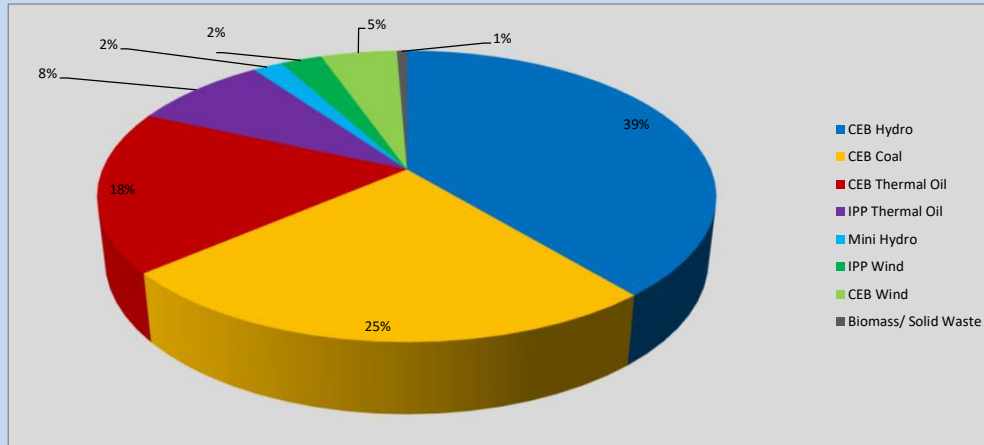


Table 06

CEB Hydro	741	MW
CEB Coal	472	MW
CEB Thermal Oil	342	MW
IPP Thermal Oil	161	MW
Mini Hydro (Telemetered)	35	MW
IPP Wind	49.6	MW
CEB Wind	90.4	MW
Biomass/ Solid Waste	12	MW

Recorded Peak Demand Data

Table 07

Night Peak*	1,903	MW
Day Peak Maximum Demand	1,304	MW
Day Peak Minimum Demand	1,057	MW
Off Peak Minimum Demand	1,120	MW

Above figures are excluding contribution from roof top solar, non telemetered solar and mini hydro plants

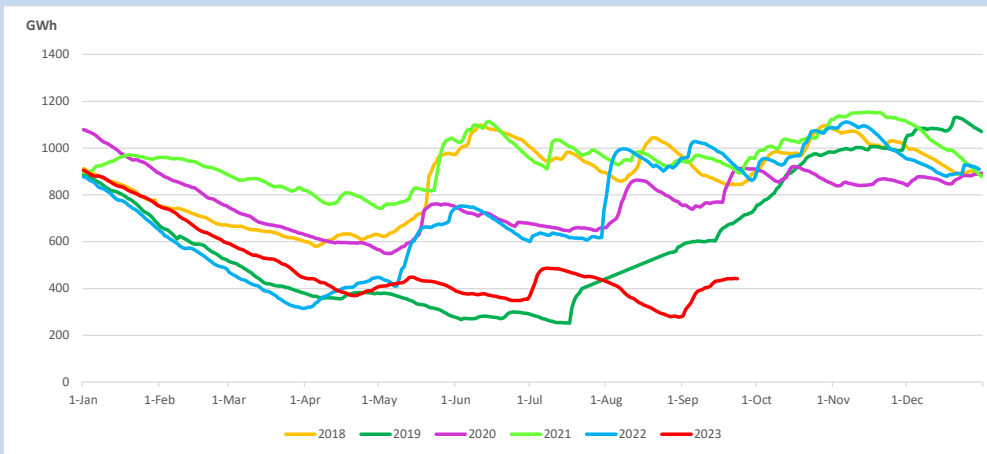
Reservoir Levels -

as at 06.00 Hr on September 25, 2023

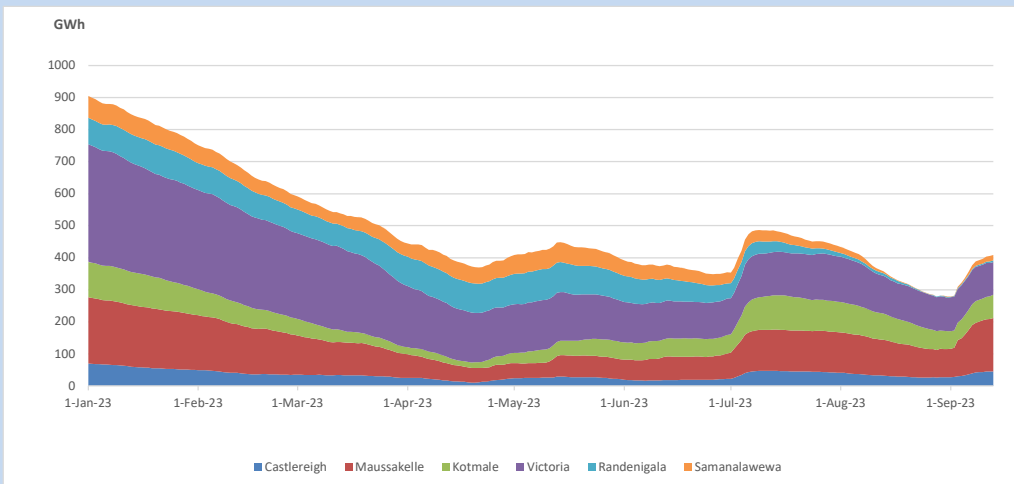


Total Reservoir Level 441.6 GWh
 % of Total capacity 36.6%

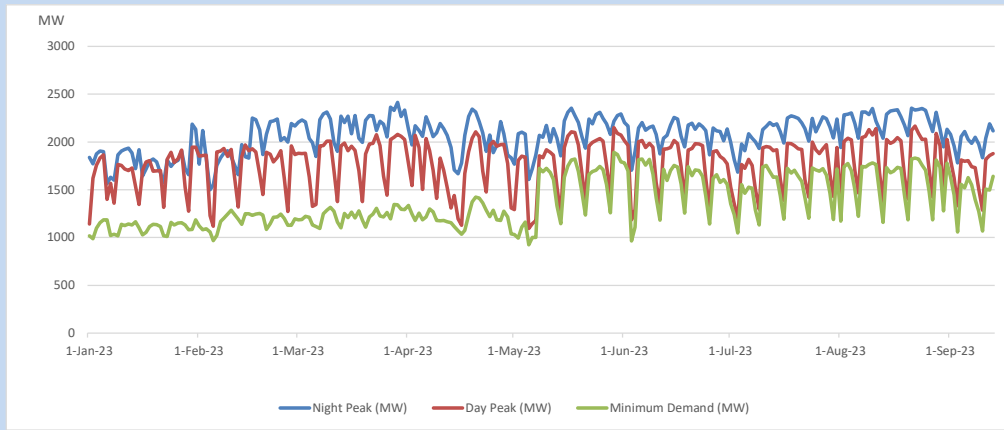
11. Comparison of Total Reservoir Storage Levels with Past Years



12. Variation of Major Hydro Reservoir Levels in the current year (GWh)



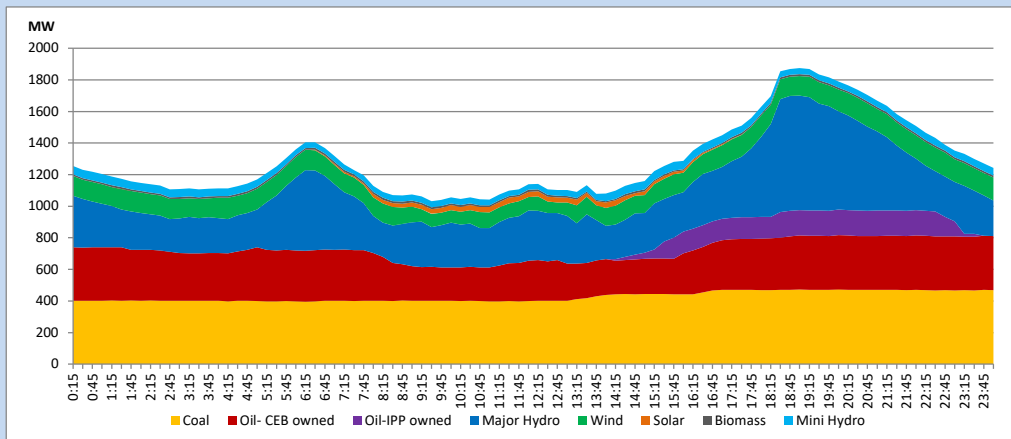
13. Variation of Demand during the current year



The above figures are excluding contribution from roof top solar, non telemetered solar and mini hydro plants

14. Daily Load Curve

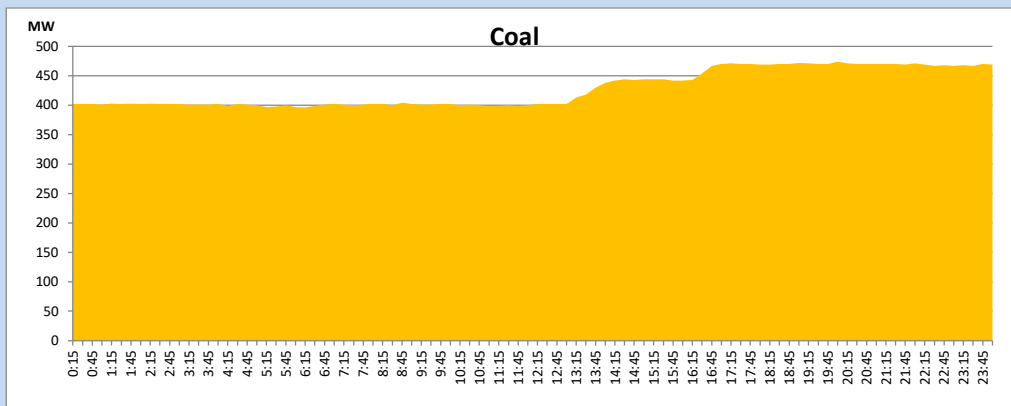
September 24, 2023



Solar and wind data is based on Telemetered Power Stations only

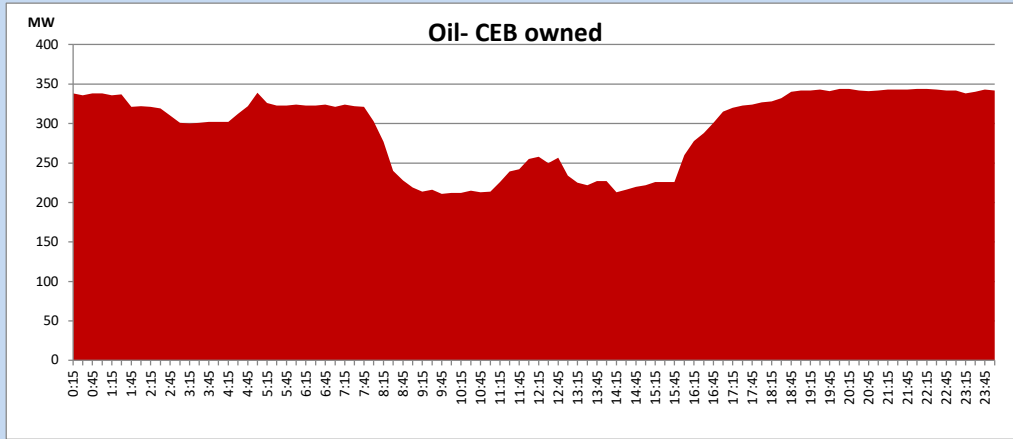
Coal Generation during

September 24, 2023



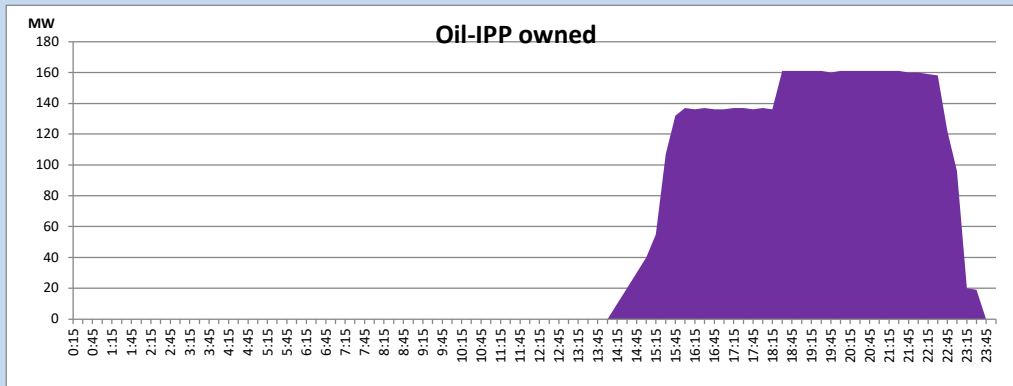
CEB Oil Plant Generation during

September 24, 2023



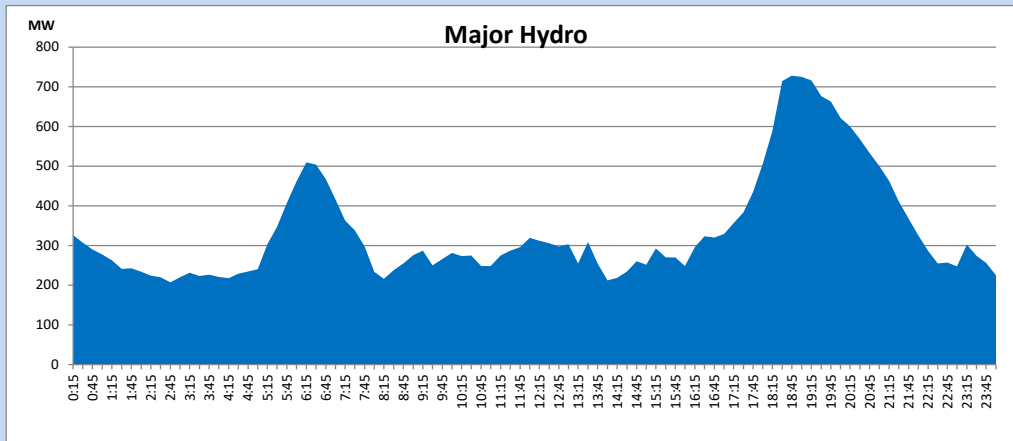
IPP Oil Plant Generation during

September 24, 2023



Major Hydro Generation during

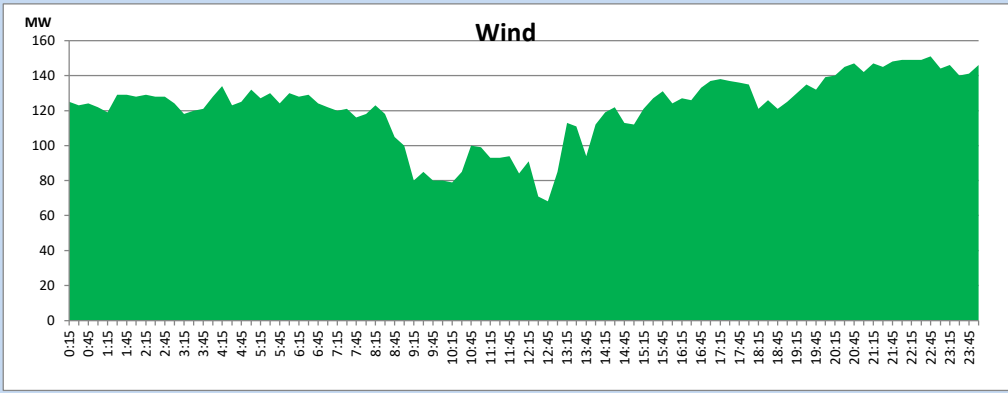
September 24, 2023



Wind Generation during

September 24, 2023

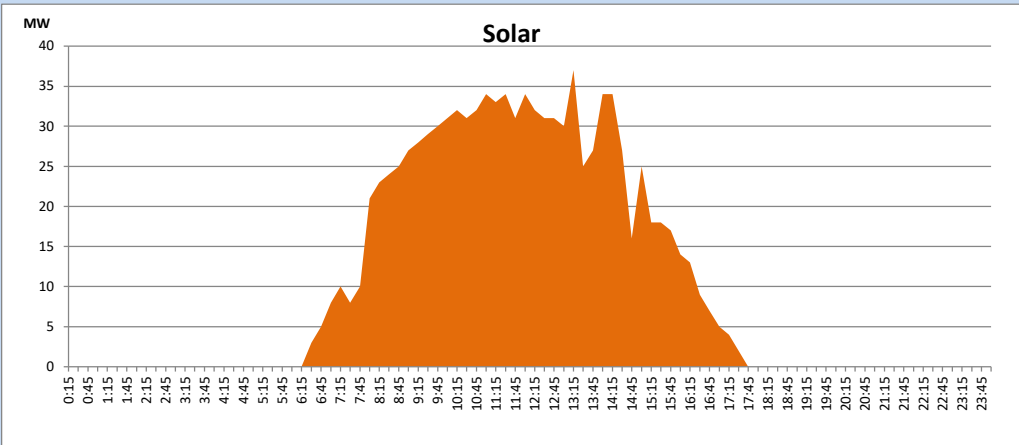
Based on Telemetered Power Stations only



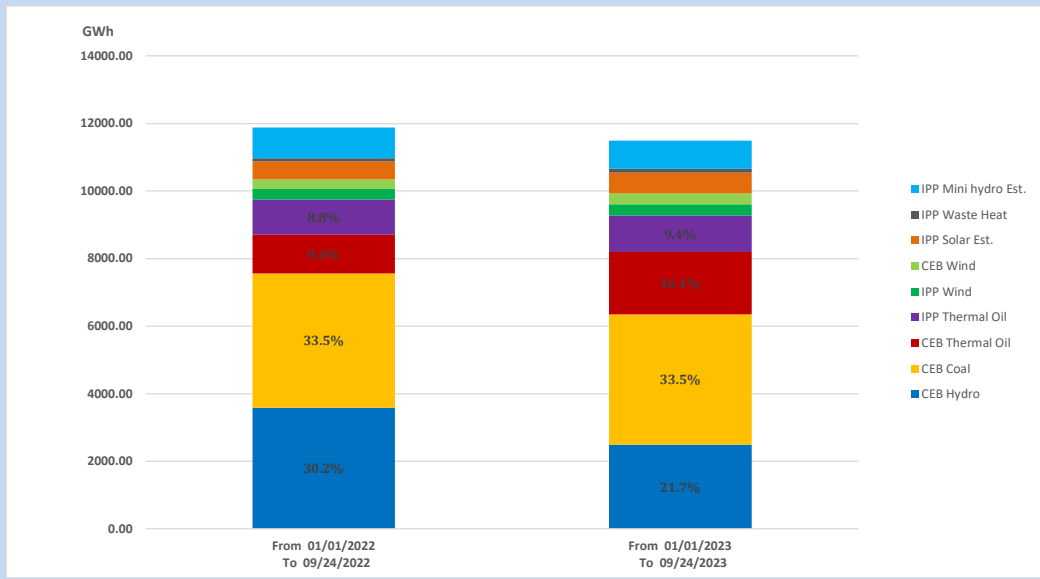
Solar Generation during

September 24, 2023

Based on Telemetered Power Stations only



15. Cumulative Dispatch Comparison with Last Year



Cumulative dispatch

From 01/01/2022 To 09/24/2022

11884 GWh

From 01/01/2023 To 09/24/2023

11492 GWh

The above figures are including contribution from roof top solar, non telemetered solar and mini hydro plants (figures have been adjusted based on the data from the CEB monthly review reports.)

Thermal Plant Fuel types

Table 08

Power Station	Primary Fuel
CEB Thermal	
Sapugaskanda 1	Heavy Fuel
Sapugaskanda 2	Heavy Fuel
Kelanitissa Small Gas Turbines	Auto Diesel
GT 7 - Kelanitissa	Auto Diesel
Kelanitissa CCY	Naphtha or Diesel
Lakvijaya 1	Coal
Lakvijaya 2	Coal
Lakvijaya 3	Coal
Uthuru Janani	Heavy Fuel
Barge CEB	Heavy Fuel
KCCPS -2	Auto Diesel

Power Station	Primary Fuel
Private Thermal	
West Coast	Auto Diesel / Heavy Fuel
ACE Matara	Heavy Fuel
ACE Embilipitiya	Heavy Fuel

Major Incidents reported during the day

September 24, 2023

- 1). LVPS Unit 02, which was deloaded to 199MW(net) on 21.09.2023, reached full load at 16:18hrs