

Generation and Reservoirs Statistics

September 23, 2023



PUBLIC UTILITIES COMMISSION OF SRI LANKA

1. Daily Generation Mix in MWh

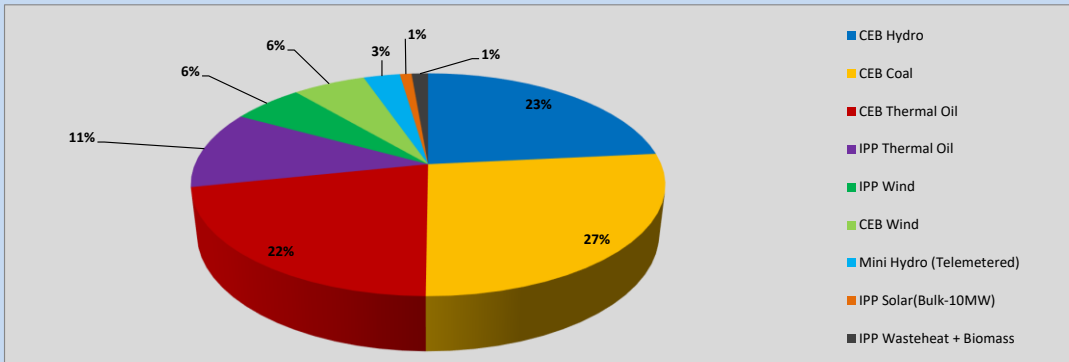


Table 01

	Generation (MWh)
CEB Hydro	8,409
CEB Coal	9,581
CEB Thermal Oil	7,746
IPP Thermal Oil	4,049
IPP Wind	2,079
CEB Wind	2,129
Mini Hydro (Telemetered)	1,067
IPP Solar (Bulk)	343
IPP Waste heat + Biomass	483
Total Generation (Excluding estimated figures)	35,886
* Estimated unserved energy	0
* Estimated Mini Hydro (Non telemetered)	2573
* Estimated IPP Solar PV (Bulk 1-10MW)	304
* Estimated Solar Roof Top PV	1660
Total Generation (Including estimated figures)	40,423

* Estimated figures of CEB generation report

Table 02

	Installed Capacity (MW)
CEB Hydro	1409
CEB Coal	810
CEB Thermal Oil	781
IPP Thermal Oil (West Coast, ACE Matara and ACE Embilipitiya)	387
IPP Wind	148
CEB Wind	100
Mini Hydro	416
IPP Waste heat + Biomass	50
IPP Solar	130
Rooftop Solar* (Ordinary)	267
Rooftop Solar* (LT Bulk)	256
Rooftop Solar* (HT Bulk)	61

Data Source - Monthly Review Report [May-2023]

2. Cumulative Dispatch

Following data excludes the contribution from roof top solar, non telemetered solar and mini hydro plants

Table 03 - Current Month

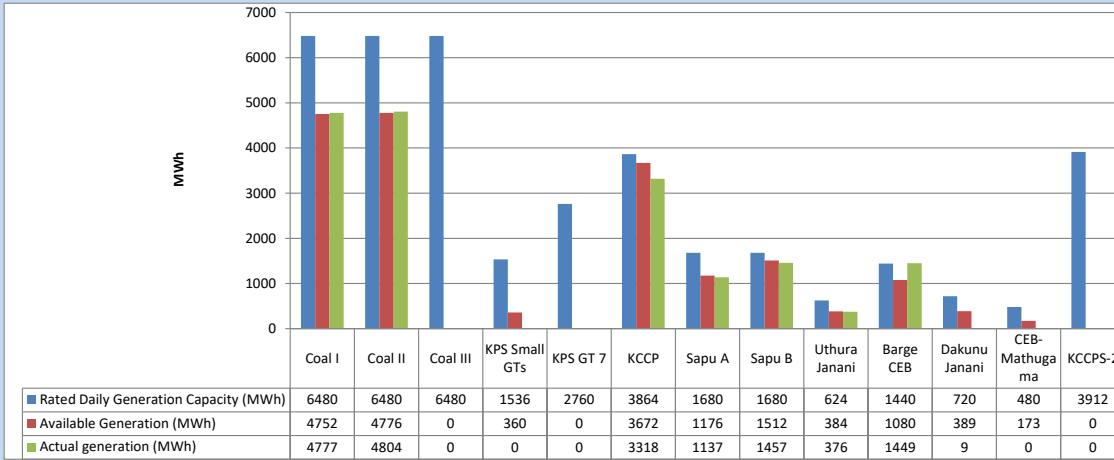
Category	Dispatch (GWh)	
CEB Hydro	197	22.99%
CEB Coal	261	30.53%
CEB Thermal Oil	167	19.50%
IPP Thermal	87	10.17%
SPP Wind	48	5.67%
CEB Wind	49	5.69%
Mini Hydro (Telemetered)	32	3.70%
IPP Solar(Bulk-10MW)	6	0.72%
IPP Waste heat + BMP	9	1.04%
Total	856	

Table 04 - Current Year

Category	Dispatch (GWh)	
CEB Hydro	2,496	24.19%
CEB Coal	3,846	37.28%
CEB Thermal Oil	1,852	17.95%
IPP Thermal	1,077	10.44%
SPP Wind	309	2.99%
CEB Wind	318	3.08%
Mini Hydro (Telemetered)	242	2.34%
IPP Solar(Bulk-10MW)	80	0.78%
IPP Waste heat	96	0.93%
Total	10,316	

3. CEB owned Thermal Plant Dispatch

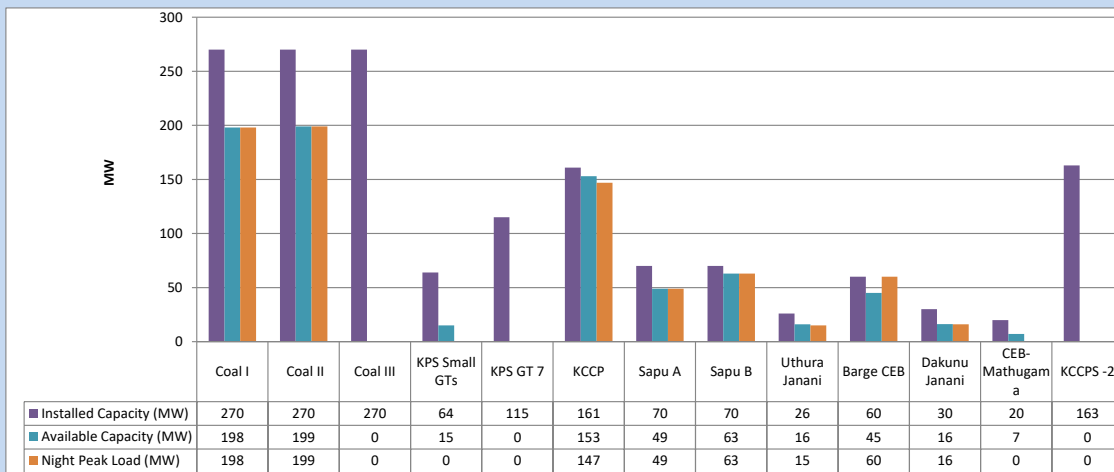
September 23, 2023



Available Generation is estimated based on plant availability at 6.00am on

September 24, 2023

4. CEB owned Thermal Plant Loading at the Night Peak

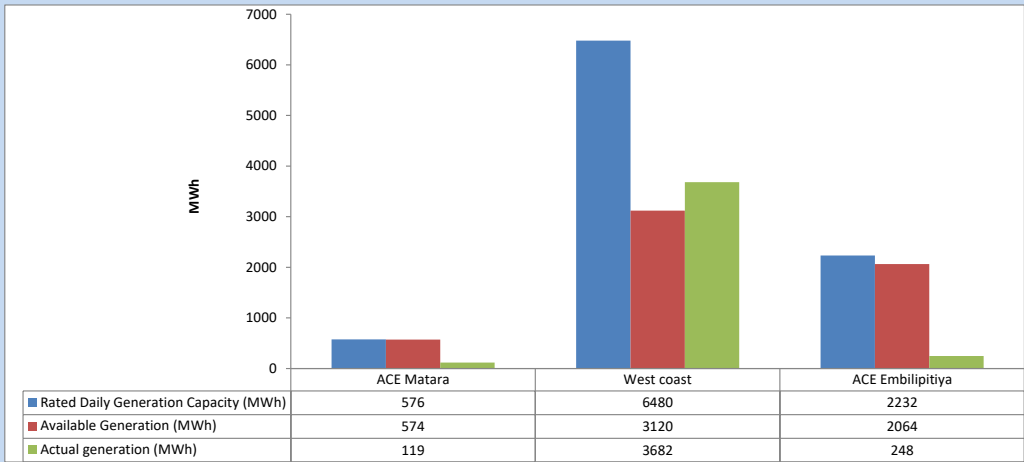


Plant availability is recorded at 6.00 am on

September 24, 2023

5. IPP owned Thermal Plant Dispatch

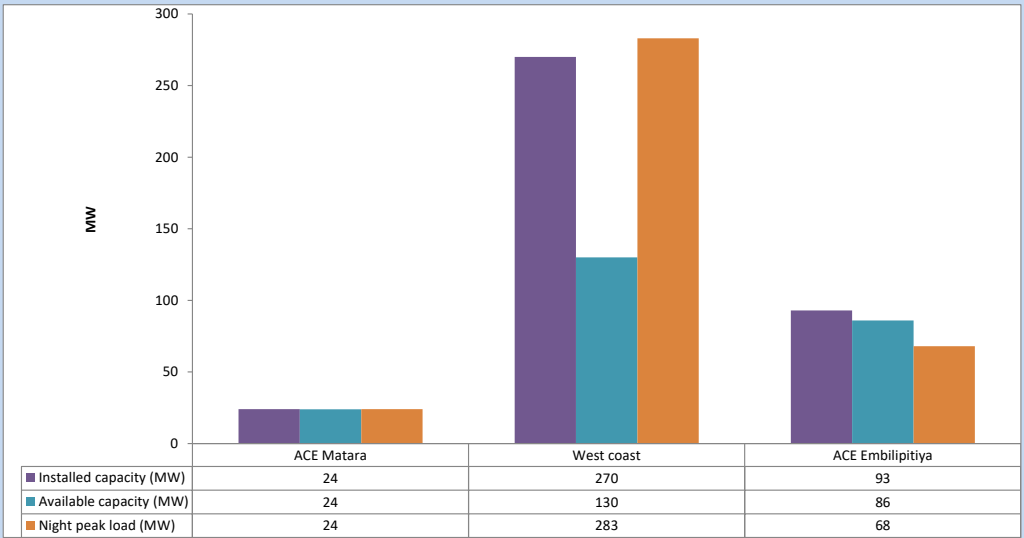
September 23, 2023



Available Generation is estimated based on plant availability at 6.00am on

September 24, 2023

6. IPP owned Thermal Plant Loading at the Night Peak

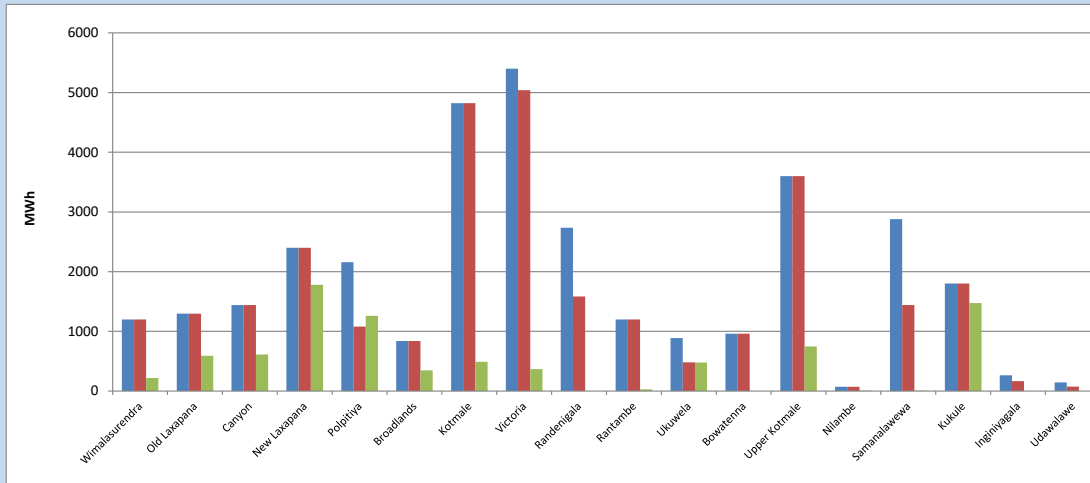


Plant availability is recorded at 6.00 am on

September 24, 2023

7. Major Hydro Plant Dispatch

September 23, 2023

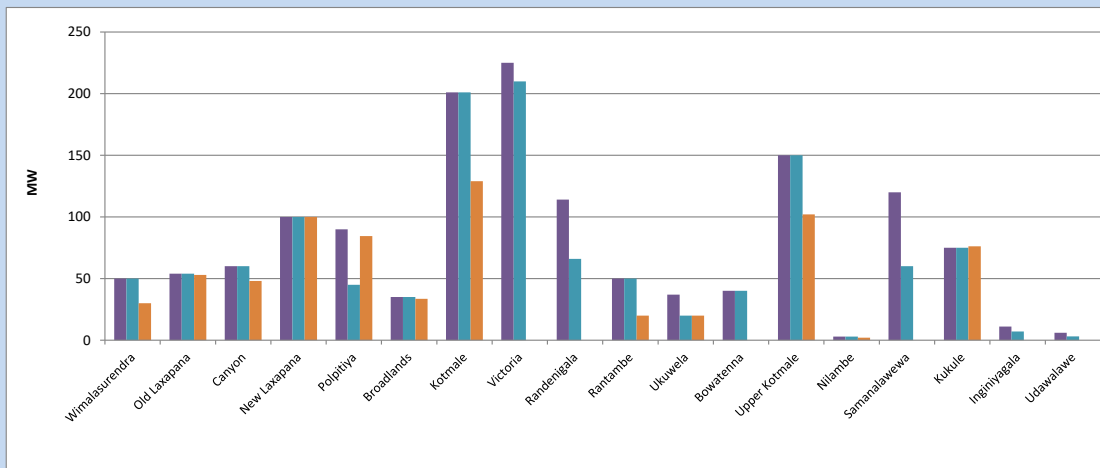


Available Generation is estimated based on plant availability at 6.00am on September 24, 2023
Broadlands power plant is operating in the Commissioning Stage

September 24, 2023

8. Major Hydro Plant Loading at Night Peak

September 23, 2023



Plant availability is recorded at 6.00 am on September 24, 2023
Broadlands power plant is operating in the Commissioning Stage

September 24, 2023

9. Summary of Major Plant performance

Table 05

Plant	Installed Capacity	Plant Availability	Night peak Load	Plant Dispatch
	(MW)	(MW)	(MW)	(MWh)
Wimalasurendra	50	50	30	218
Old Laxapana Canyon	54	54	53	591
New Laxapana	60	60	48	613
Polpitiya	100	100	100	1,781
Broadlands	90	45	84	1,260
Kotmale	35	35	34	346
Kotmale	201	201	129	490
Victoria	225	210	0	367
Randenigala	114	66	0	0
Rantambe	50	50	20	29
Ukuwela	37	20	20	477
Bowatenna	40	40	0	0
Upper Kotmale	150	150	102	747
Nilambe	3	3	2	8
Samanalawewa	120	60	0	8
Kukule	75	75	76	1,474
Inginiyagala	11	7	0	0
Udawalawe	6	3	0	0
Puttalam Coal I	270	198	198	4,777
Puttalam Coal II	270	199	199	4,804
Puttalam Coal III	270	0	0	0
KPS Small GTs	64	15	0	0
KPS GT 7	115	0	0	0
KCCP	161	153	147	3,318
Sapugaskanda A	70	49	49	1,137
Sapugaskanda B	70	63	63	1,457
Uthura Janani	26	16	15	376
Barge CEB	60	45	60	1,449
CEB-Hambantota	30	16	16	9
CEB-Mathugama	20	7	0	0
ACE Matara	24	24	24	119
Asia Power	50	0	0	0
KCCPS -2	163	0	0	0
West Coast	270	130	283	3,682
Nothern Power	36	0	0	0
ACE Embilipitiya	93	86	68	248
Total	3,483	2,230	2,013	35,886

Plant availability is the availability recorded at 6 am on

September 24, 2023

10. Contribution to the Night Peak in MW

September 23, 2023

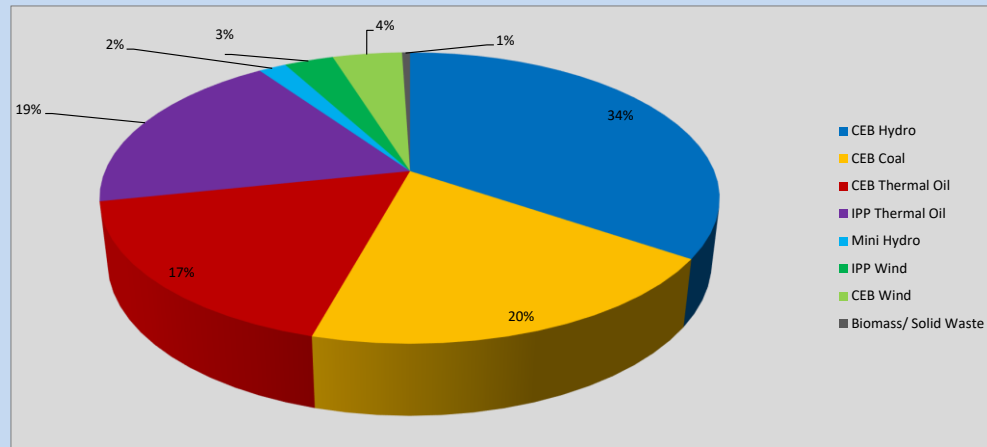


Table 06

CEB Hydro	692	MW
CEB Coal	397	MW
CEB Thermal Oil	350	MW
IPP Thermal Oil	375	MW
Mini Hydro (Telemetered)	35	MW
IPP Wind	61.7	MW
CEB Wind	86.9	MW
Biomass/ Solid Waste	10	MW

Recorded Peak Demand Data

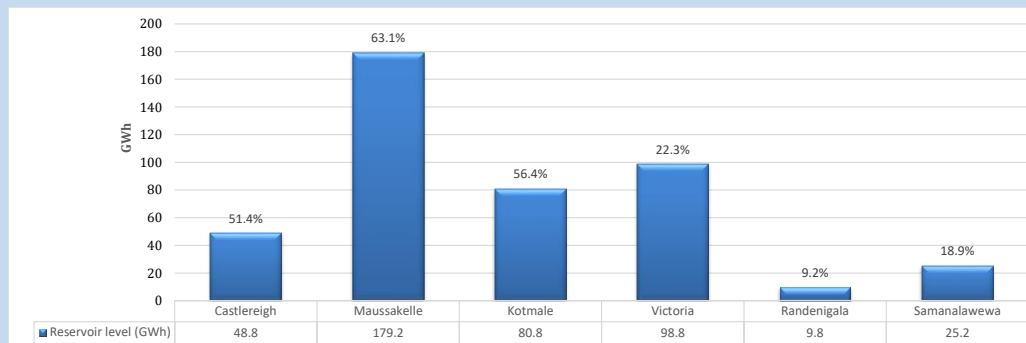
Table 07

Night Peak*	2,007	MW
Day Peak Maximum Demand	1,526	MW
Day Peak Minimum Demand	1,354	MW
Off Peak Minimum Demand	1,136	MW

Above figures are excluding contribution from roof top solar, non telemetered solar and mini hydro plants

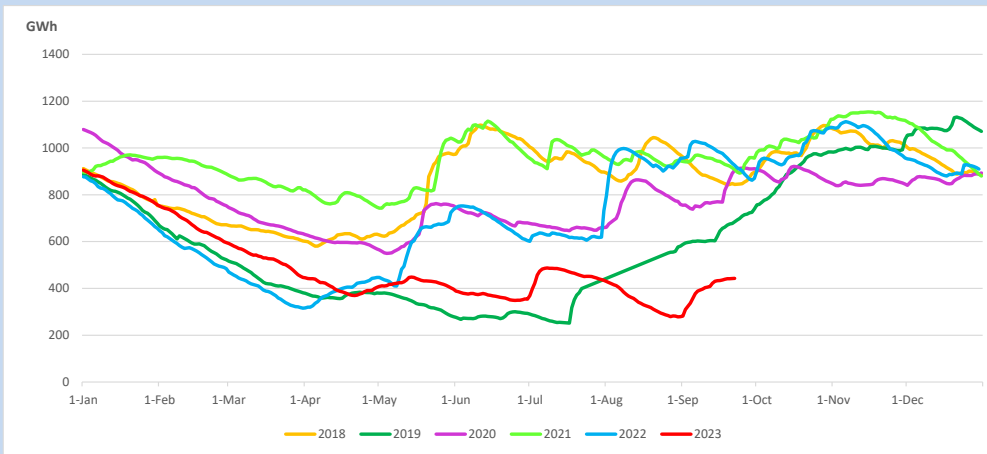
Reservoir Levels -

as at 06.00 Hr on September 24, 2023

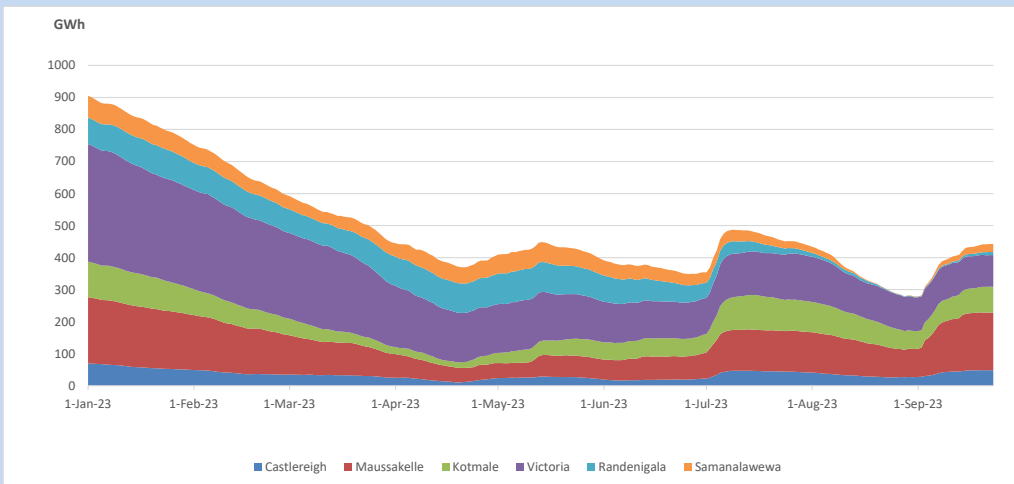


Total Reservoir Level 442.6 GWh
 % of Total capacity 36.7%

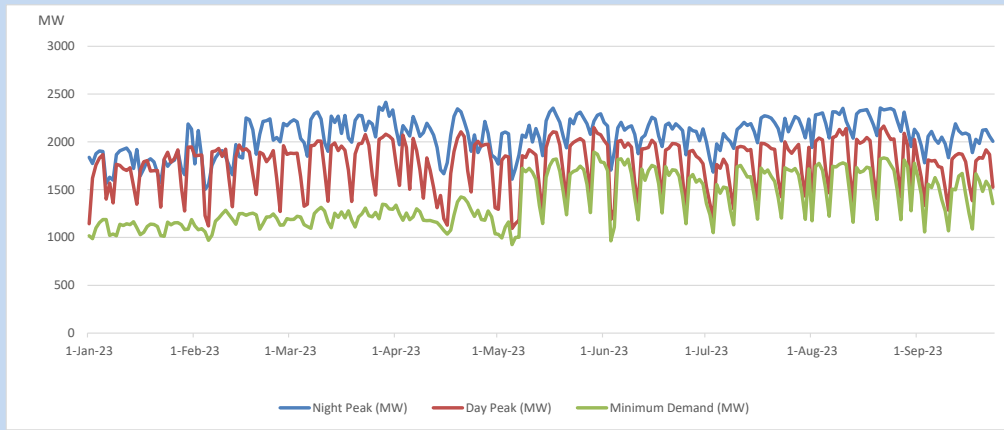
11. Comparison of Total Reservoir Storage Levels with Past Years



12. Variation of Major Hydro Reservoir Levels in the current year (GWh)



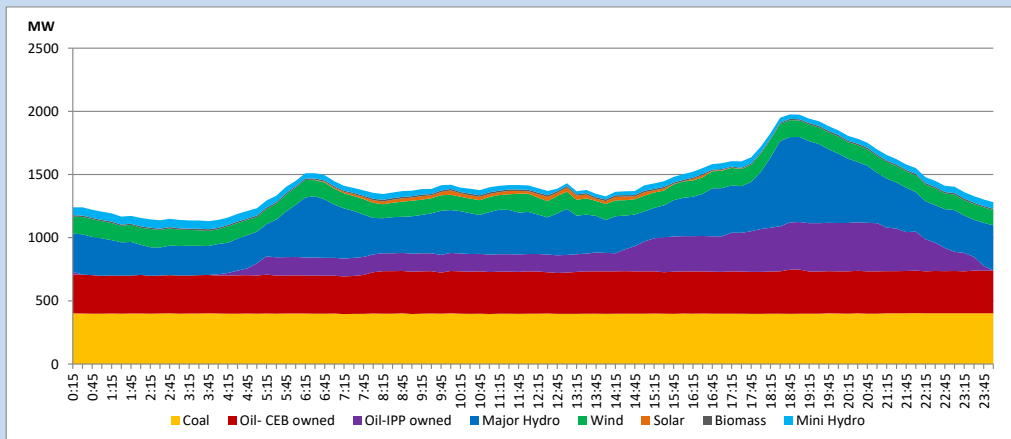
13. Variation of Demand during the current year



The above figures are excluding contribution from roof top solar, non telemetered solar and mini hydro plants

14. Daily Load Curve

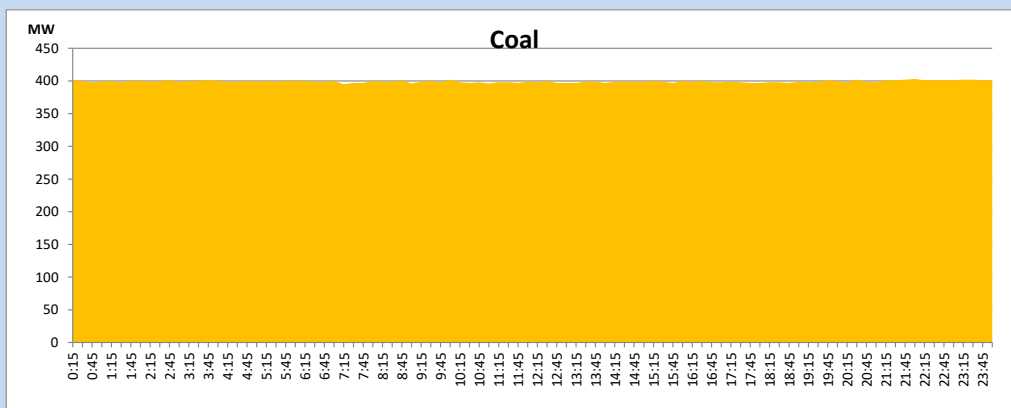
September 23, 2023



Solar and wind data is based on Telemetered Power Stations only

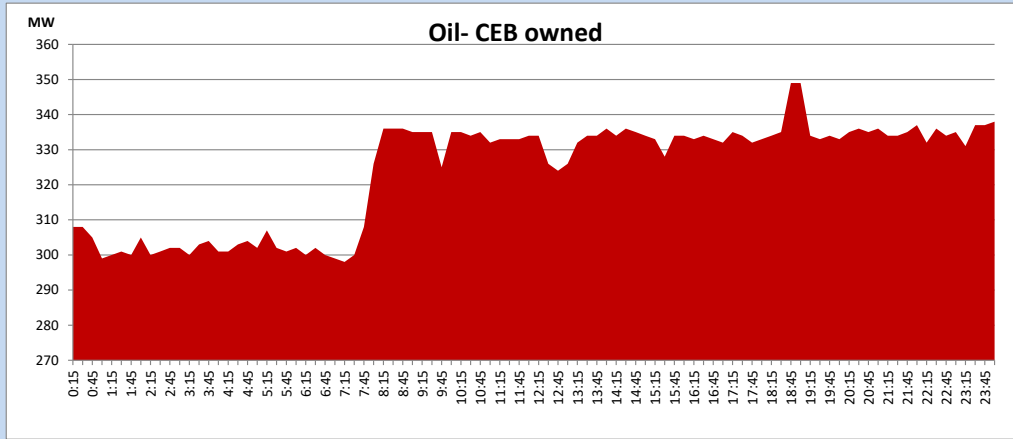
Coal Generation during

September 23, 2023



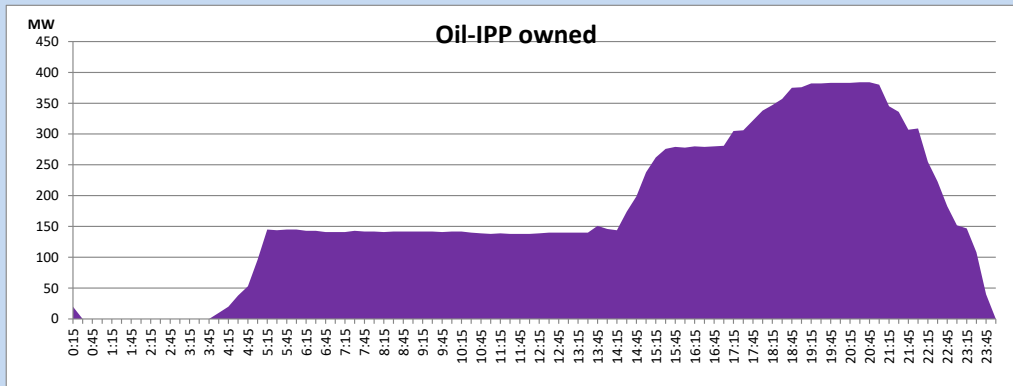
CEB Oil Plant Generation during

September 23, 2023



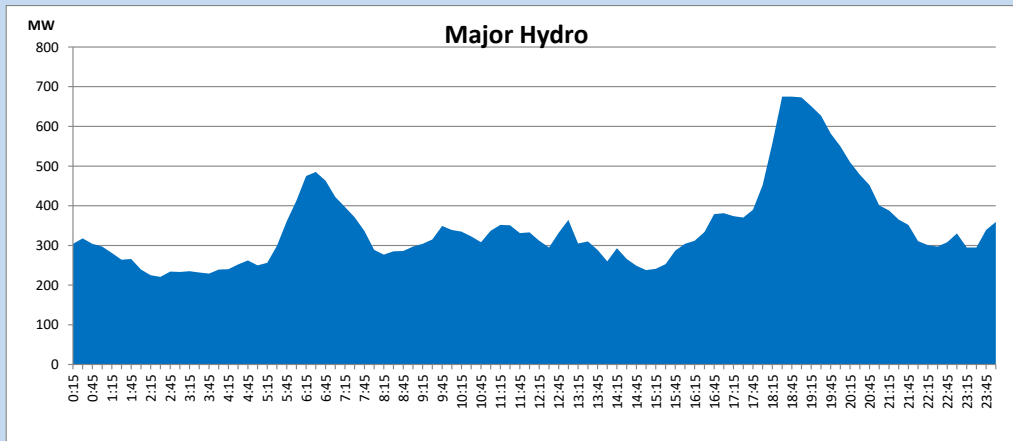
IPP Oil Plant Generation during

September 23, 2023



Major Hydro Generation during

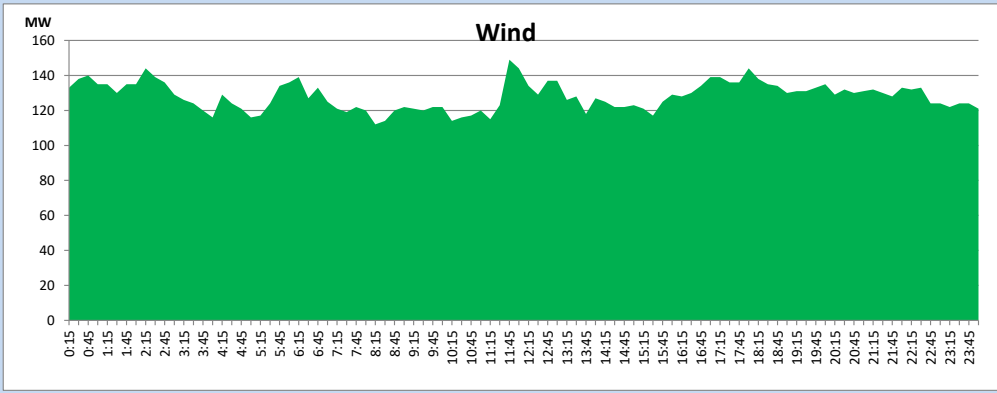
September 23, 2023



Wind Generation during

September 23, 2023

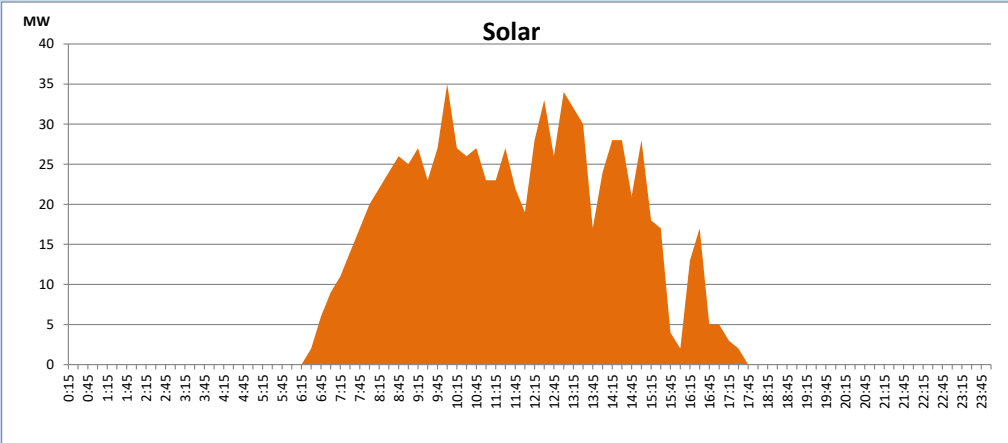
Based on Telemetered Power Stations only



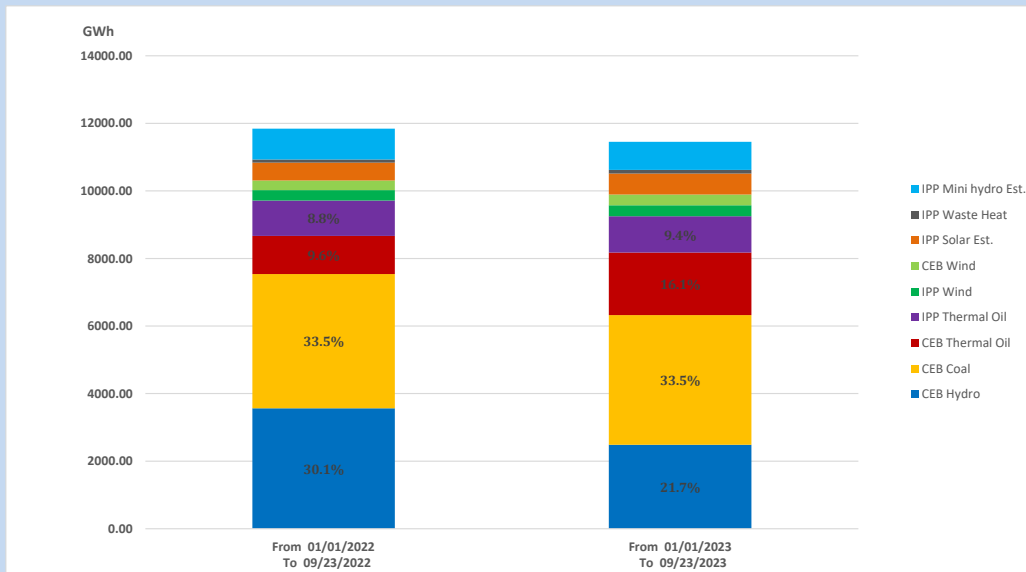
Solar Generation during

September 23, 2023

Based on Telemetered Power Stations only



15. Cumulative Dispatch Comparison with Last Year



Cumulative dispatch

From 01/01/2022 To 09/23/2022

11841 GWh

From 01/01/2023 To 09/23/2023

11455 GWh

The above figures are including contribution from roof top solar, non telemetered solar and mini hydro plants (figures have been adjusted based on the data from the CEB monthly review reports.)

Thermal Plant Fuel types

Table 08

Power Station	Primary Fuel
CEB Thermal	
Sapugaskanda 1	Heavy Fuel
Sapugaskanda 2	Heavy Fuel
Kelanitissa Small Gas Turbines	Auto Diesel
GT 7 - Kelanitissa	Auto Diesel
Kelanitissa CCY	Naphtha or Diesel
Lakvijaya 1	Coal
Lakvijaya 2	Coal
Lakvijaya 3	Coal
Uthuru Janani	Heavy Fuel
Barge CEB	Heavy Fuel
KCCPS -2	Auto Diesel

Power Station	Primary Fuel
Private Thermal	
West Coast	Auto Diesel / Heavy Fuel
ACE Matara	Heavy Fuel
ACE Embilipitiya	Heavy Fuel

Major Incidents reported during the day

September 23, 2023

- 1). Hambantota 220/132kV T/F 01 tripped from both ends at 18:03hrs due to the operation of earth fault protection. The 220/132kV T/F 01 is yet to be normalized