

Generation and Reservoirs Statistics

September 20, 2023



PUBLIC UTILITIES COMMISSION OF SRI LANKA

1. Daily Generation Mix in MWh

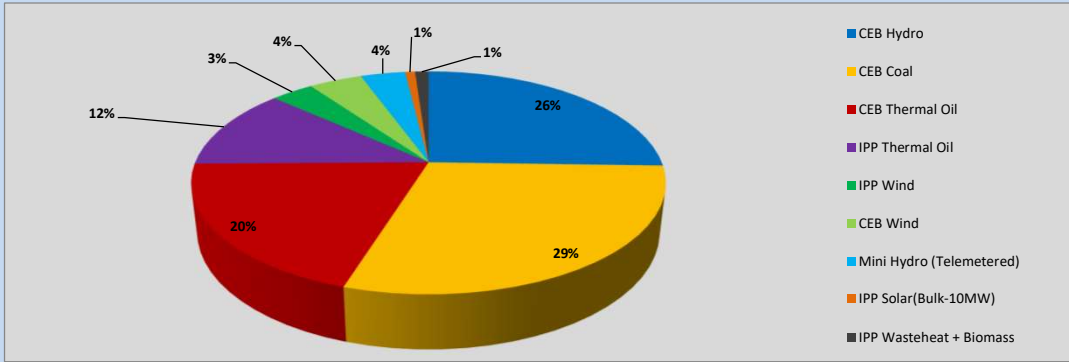


Table 01

	Generation (MWh)
CEB Hydro	9,631
CEB Coal	11,096
CEB Thermal Oil	7,537
IPP Thermal Oil	4,484
IPP Wind	1,309
CEB Wind	1,634
Mini Hydro (Telemetered)	1,377
IPP Solar (Bulk)	303
IPP Waste heat + Biomass	419
Total Generation (Excluding estimated figures)	37,790
* Estimated unserved energy	0
* Estimated Mini Hydro (Non telemetered)	2263
* Estimated IPP Solar PV (Bulk 1-10MW)	304
* Estimated Solar Roof Top PV	1660
Total Generation (Including estimated figures)	42,017

* Estimated figures of CEB generation report

Table 02

	Installed Capacity (MW)
CEB Hydro	1409
CEB Coal	810
CEB Thermal Oil	781
IPP Thermal Oil (West Coast, ACE Matara and ACE Embilipitiya)	387
IPP Wind	148
CEB Wind	100
Mini Hydro	416
IPP Waste heat + Biomass	50
IPP Solar	130
Rooftop Solar* (Ordinary)	267
Rooftop Solar* (LT Bulk)	256
Rooftop Solar* (HT Bulk)	61

Data Source - Monthly Review Report [May-2023]

2. Cumulative Dispatch

Following data excludes the contribution from roof top solar, non telemetered solar and mini hydro plants

Table 03 - Current Month

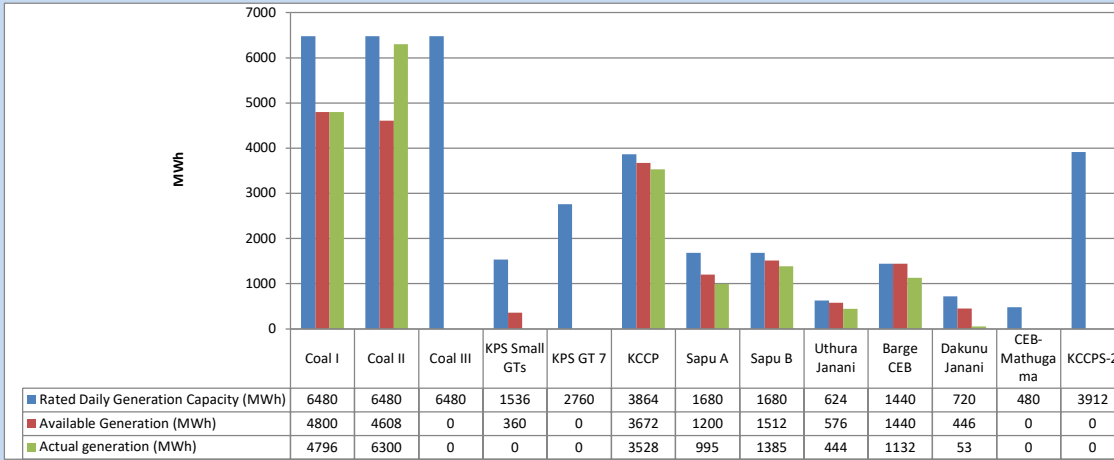
Category	Dispatch (GWh)	
CEB Hydro	167	22.56%
CEB Coal	233	31.36%
CEB Thermal Oil	143	19.24%
IPP Thermal	72	9.69%
SPP Wind	43	5.84%
CEB Wind	43	5.74%
Mini Hydro (Telemetered)	28	3.84%
IPP Solar(Bulk-10MW)	5	0.69%
IPP Waste heat + BMP	8	1.04%
Total	742	

Table 04 - Current Year

Category	Dispatch (GWh)	
CEB Hydro	2,466	24.17%
CEB Coal	3,817	37.42%
CEB Thermal Oil	1,828	17.92%
IPP Thermal	1,062	10.41%
SPP Wind	304	2.98%
CEB Wind	312	3.05%
Mini Hydro (Telemetered)	239	2.34%
IPP Solar(Bulk-10MW)	79	0.78%
IPP Waste heat	95	0.93%
Total	10,202	

3. CEB owned Thermal Plant Dispatch

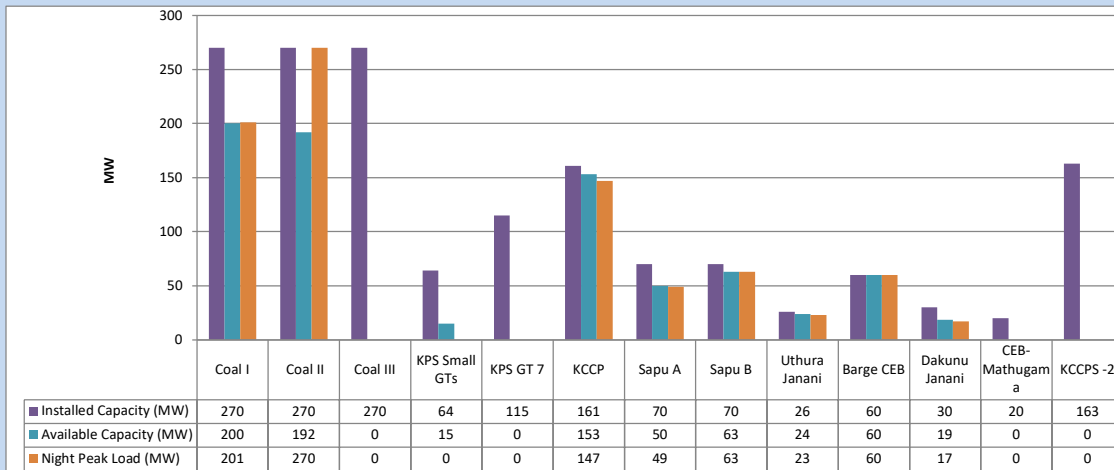
September 20, 2023



Available Generation is estimated based on plant availability at 6.00am on

September 21, 2023

4. CEB owned Thermal Plant Loading at the Night Peak

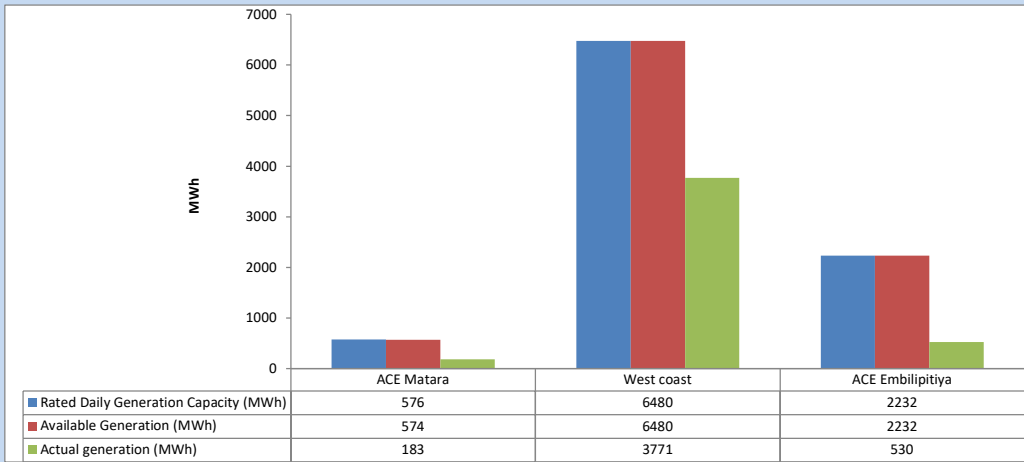


Plant availability is recorded at 6.00 am on

September 21, 2023

5. IPP owned Thermal Plant Dispatch

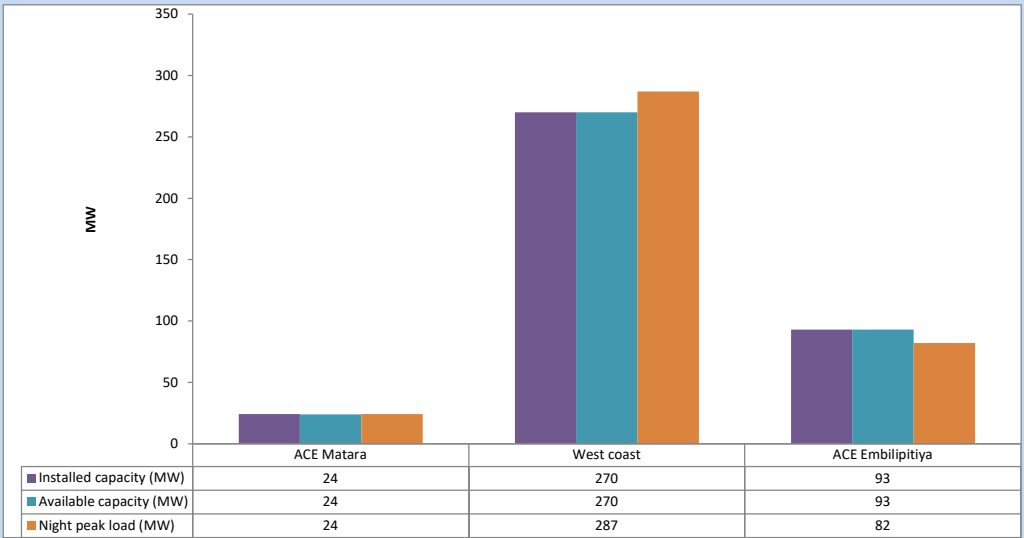
September 20, 2023



Available Generation is estimated based on plant availability at 6.00am on

September 21, 2023

6. IPP owned Thermal Plant Loading at the Night Peak

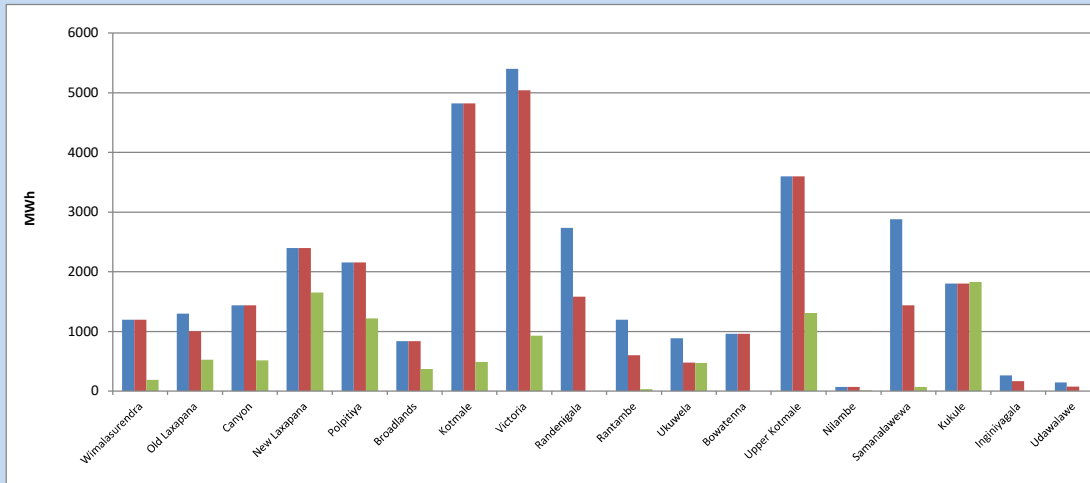


Plant availability is recorded at 6.00 am on

September 21, 2023

7. Major Hydro Plant Dispatch

September 20, 2023

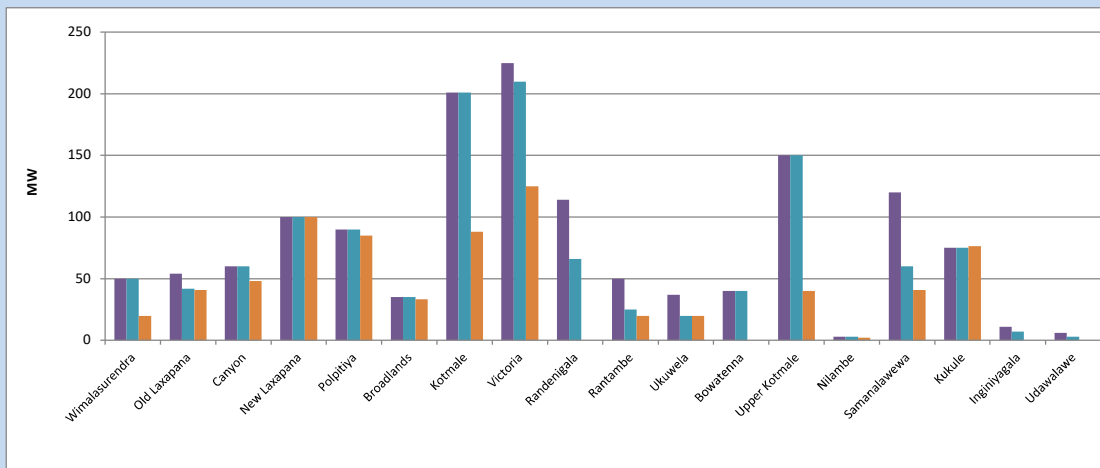


Available Generation is estimated based on plant availability at 6.00am on September 21, 2023
Broadlands power plant is operating in the Commissioning Stage

September 21, 2023

8. Major Hydro Plant Loading at Night Peak

September 20, 2023



Plant availability is recorded at 6.00 am on September 21, 2023
Broadlands power plant is operating in the Commissioning Stage

September 21, 2023

9. Summary of Major Plant performance

Table 05

Plant	Installed Capacity	Plant Availability	Night peak Load	Plant Dispatch
	(MW)	(MW)	(MW)	(MWh)
Wimalasurendra	50	50	20	191
Old Laxapana Canyon	54	42	41	530
New Laxapana	60	60	48	516
Polpitiya	100	100	100	1,650
Broadlands	90	90	85	1,220
Kotmale	35	35	33	371
Victoria	201	201	88	490
Randenigala	225	210	125	928
Rantambe	114	66	0	0
Ukuwela	50	25	20	31
Bowatenna	37	20	20	475
Upper Kotmale	40	40	0	0
Nilambe	150	150	40	1,308
Samanalawewa	3	3	2	15
Kukule	120	60	41	73
Inginiyagala	75	75	77	1,833
Udawalawe	11	7	0	0
Puttalam Coal I	6	3	0	0
Puttalam Coal II	270	200	201	4,796
Puttalam Coal III	270	192	270	6,300
KPS Small GTs	270	0	0	0
KPS GT 7	64	15	0	0
KCCP	115	0	0	0
Sapugaskanda A	161	153	147	3,528
Sapugaskanda B	70	50	49	995
Uthura Janani	70	63	63	1,385
Barge CEB	26	24	23	444
CEB-Hambantota	60	60	60	1,132
CEB-Mathugama	30	19	17	53
ACE Matara	20	0	0	0
Asia Power	24	24	24	183
KCCPS -2	50	0	0	0
West Coast	163	0	0	0
Nothern Power	270	270	287	3,771
ACE Embilipitiya	36	0	0	0
Total	93	93	82	530
	3,483	2,400	2,129	37,790

Plant availability is the availability recorded at 6 am on

September 21, 2023

10. Contribution to the Night Peak in MW

September 20, 2023

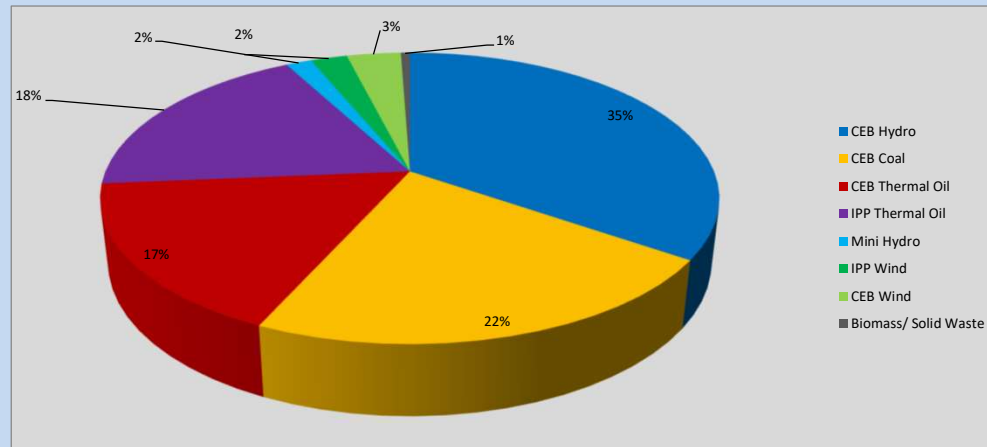


Table 06

CEB Hydro	734	MW
CEB Coal	471	MW
CEB Thermal Oil	359	MW
IPP Thermal Oil	393	MW
Mini Hydro (Telemetered)	34	MW
IPP Wind	48.5	MW
CEB Wind	71.7	MW
Biomass/ Solid Waste	12	MW

Recorded Peak Demand Data

Table 07

Night Peak*	2,123	MW
Day Peak Maximum Demand	1,829	MW
Day Peak Minimum Demand	1,483	MW
Off Peak Minimum Demand	1,072	MW

Above figures are excluding contribution from roof top solar, non telemetered solar and mini hydro plants

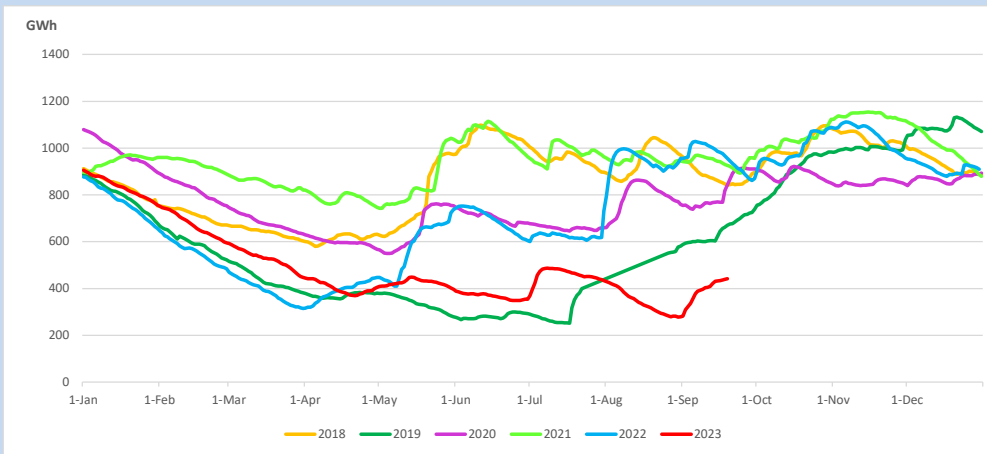
Reservoir Levels -

as at 06.00 Hr on September 21, 2023

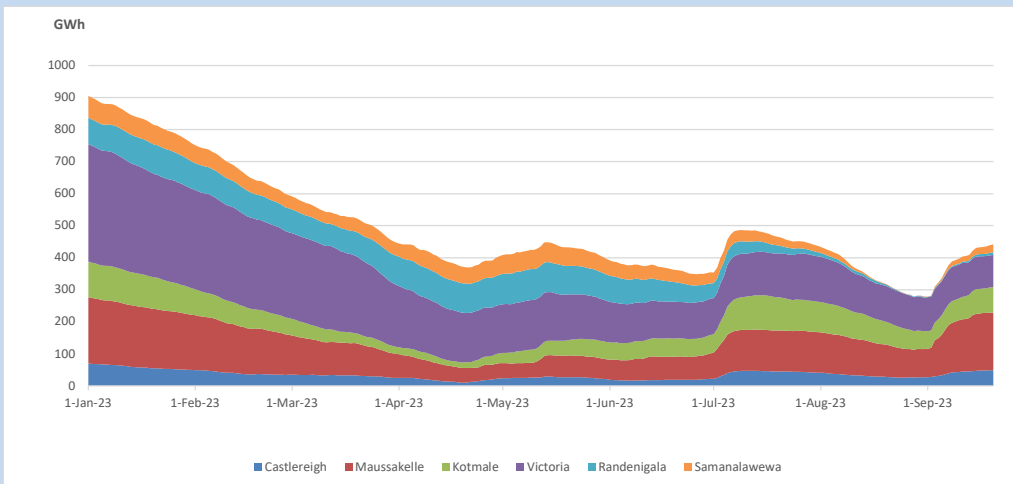


Total Reservoir Level 441.3 GWh
% of Total capacity 36.6%

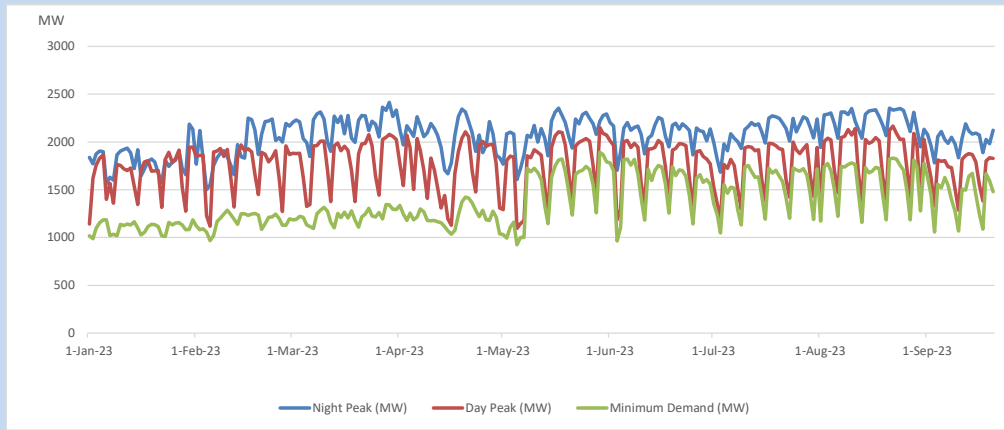
11. Comparison of Total Reservoir Storage Levels with Past Years



12. Variation of Major Hydro Reservoir Levels in the current year (GWh)



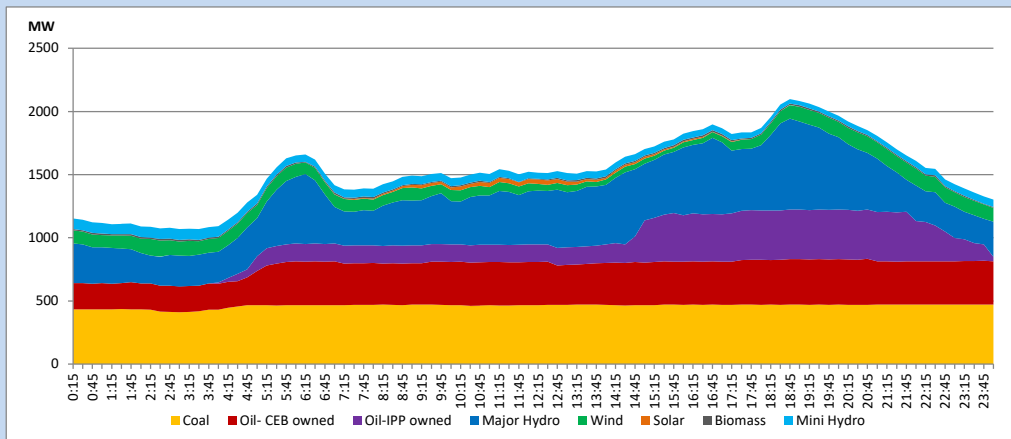
13. Variation of Demand during the current year



The above figures are excluding contribution from roof top solar, non telemetered solar and mini hydro plants

14. Daily Load Curve

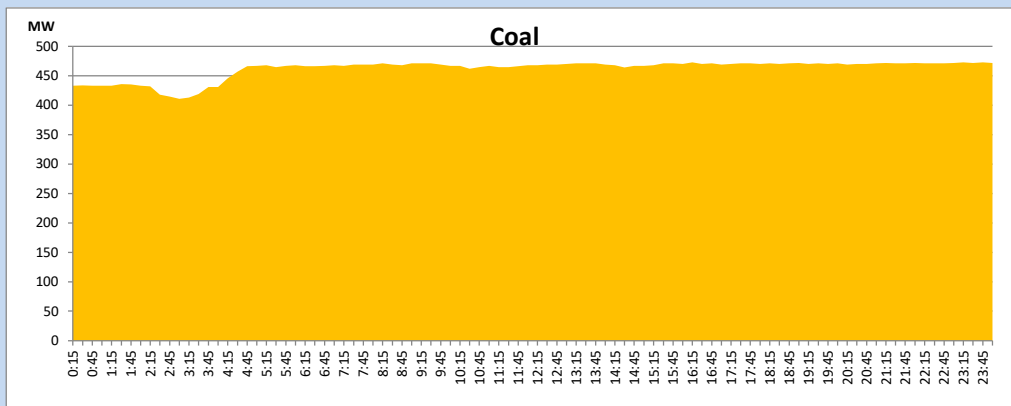
September 20, 2023



Solar and wind data is based on Telemetered Power Stations only

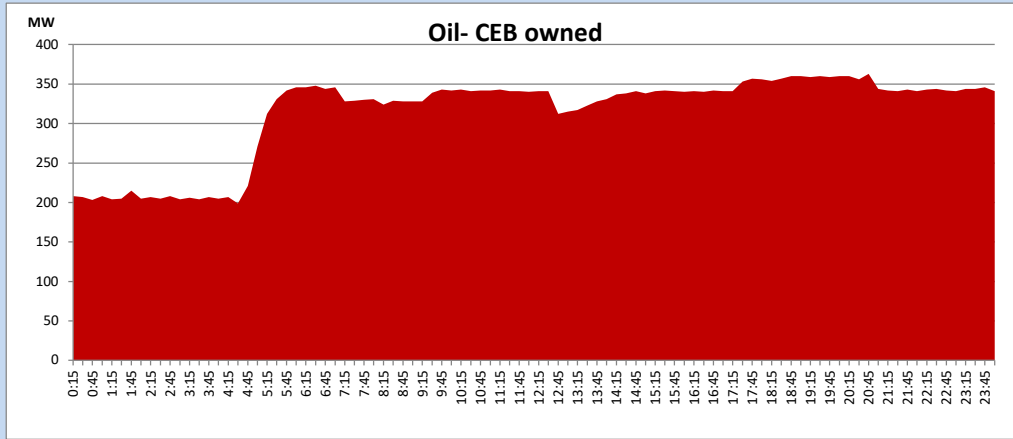
Coal Generation during

September 20, 2023



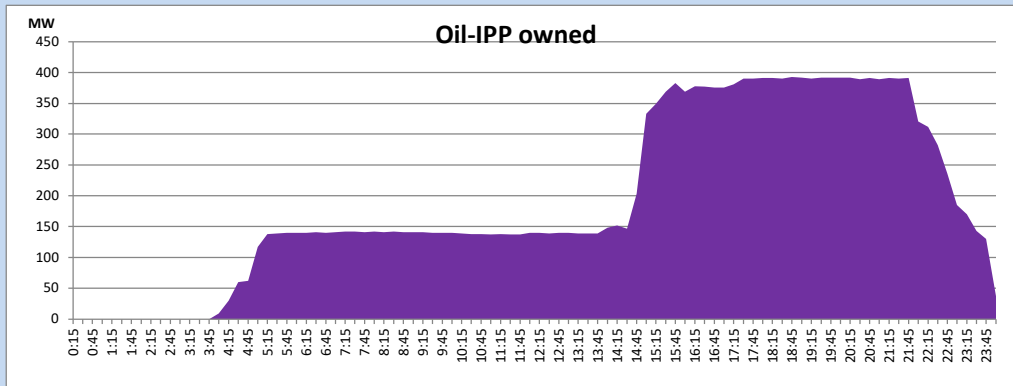
CEB Oil Plant Generation during

September 20, 2023



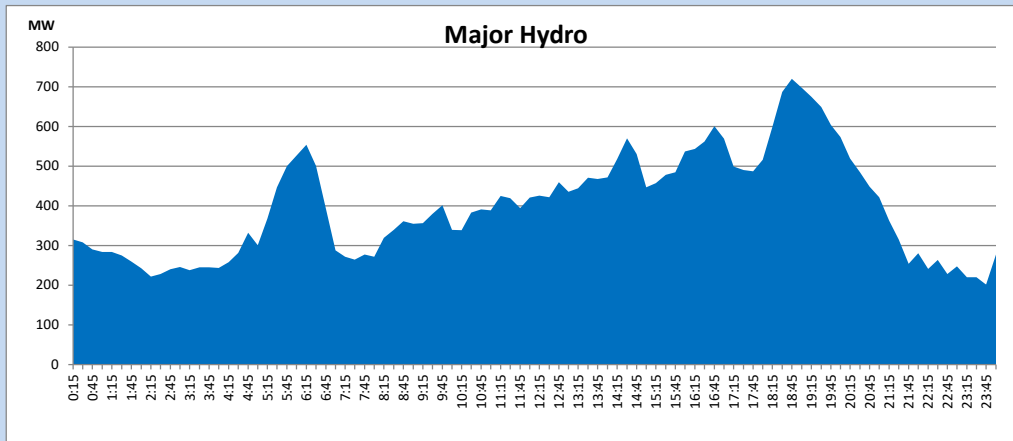
IPP Oil Plant Generation during

September 20, 2023



Major Hydro Generation during

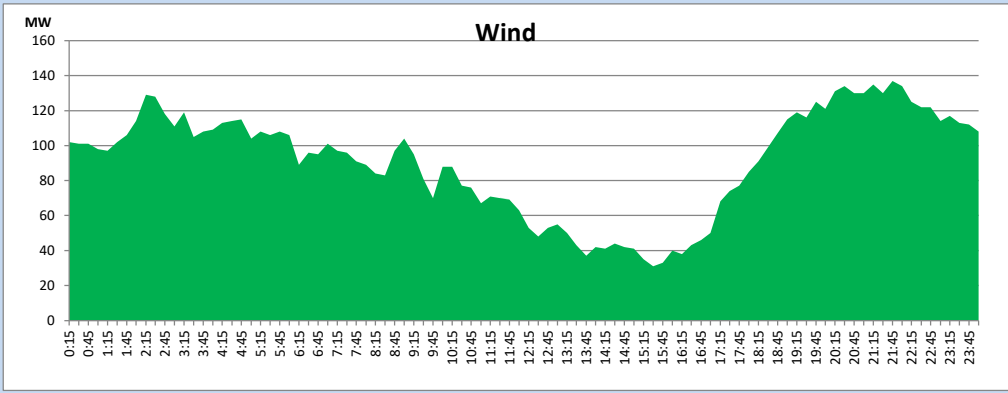
September 20, 2023



Wind Generation during

September 20, 2023

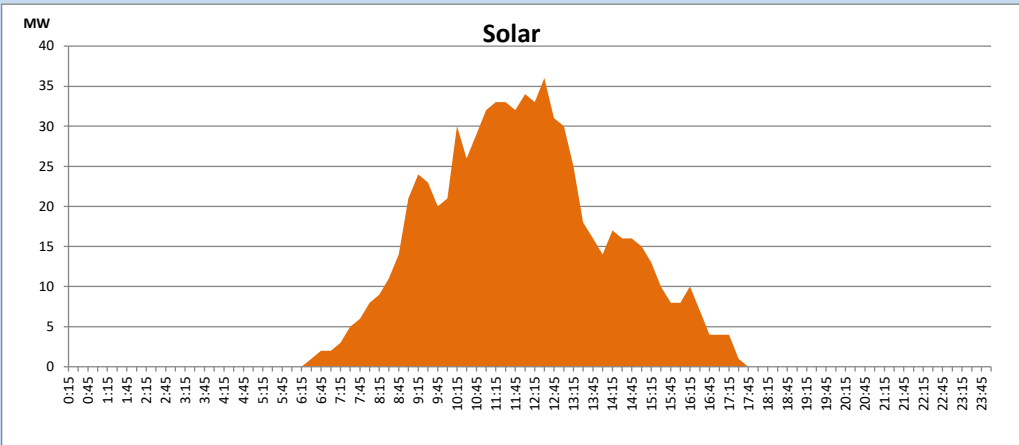
Based on Telemetered Power Stations only



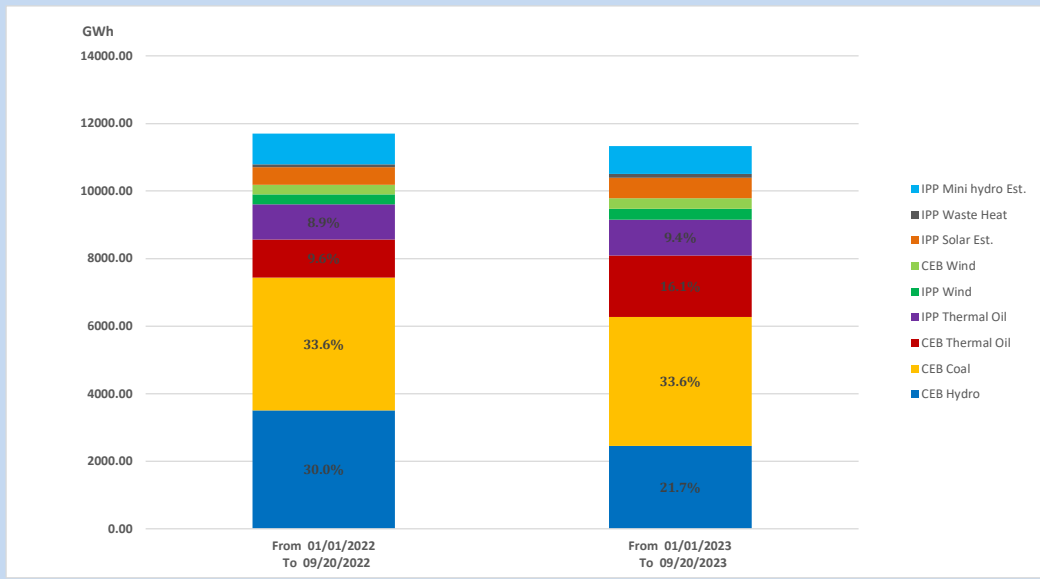
Solar Generation during

September 20, 2023

Based on Telemetered Power Stations only



15. Cumulative Dispatch Comparison with Last Year



Cumulative dispatch

From 01/01/2022 To 09/20/2022

11700 GWh

From 01/01/2023 To 09/20/2023

11327 GWh

The above figures are including contribution from roof top solar, non telemetered solar and mini hydro plants (figures have been adjusted based on the data from the CEB monthly review reports.)

Thermal Plant Fuel types**Table 08**

Power Station	Primary Fuel
CEB Thermal	
Sapugaskanda 1	Heavy Fuel
Sapugaskanda 2	Heavy Fuel
Kelanitissa Small Gas Turbines	Auto Diesel
GT 7 - Kelanitissa	Auto Diesel
Kelanitissa CCY	Naphtha or Diesel
Lakvijaya 1	Coal
Lakvijaya 2	Coal
Lakvijaya 3	Coal
Uthuru Janani	Heavy Fuel
Barge CEB	Heavy Fuel
KCCPS -2	Auto Diesel

Power Station	Primary Fuel
Private Thermal	
West Coast	Auto Diesel / Heavy Fuel
ACE Matara	Heavy Fuel
ACE Embilipitiya	Heavy Fuel

Major Incidents reported during the day

September 20, 2023

- 1) Kukule spilling started at 6:10hrs and stopped at 3:40hrs (21.09.2023)
- 2) KCCPPS-02 made unavailable from 11:43hrs due to replacement of HP side main steam valve in HRSG.
- 3) LVPS unit 02 generation limited to 192MW(net) at 01:15hrs (21.09.2023) due to a cooling line filter blockage. The unit is yet to reach full load.
- 4) Ampara 132/33kV T/F 01 tripped at 4:54hrs (21.09.2023) due to the operation of T/F differential protection. The T/F is yet to be restored.